

Data Path : Z:\voasrv\HPCHEM1\MSVOA_Y\Data\VY080522\
 Data File : VY009863.D
 Acq On : 05 Aug 2022 20:09
 Operator : KP/MD
 Sample : N4064-02
 Misc : 5.06g/5.0mL/MSVOA_Y/SOIL
 ALS Vial : 15 Sample Multiplier: 1

Instrument :
 MSVOA_Y
 ClientSampleId :
 SB-02

Integration Parameters: RTEINT.P

Integrator: RTE
 Smoothing : ON Filtering: 5
 Sampling : 1 Min Area: 3 % of largest Peak
 Start Thrs: 0.2 Max Peaks: 100
 Stop Thrs : 0 Peak Location: TOP

If leading or trailing edge < 100 prefer < Baseline drop else tangent >
 Peak separation: 5

Method : Z:\voasrv\HPCHEM1\MSVOA_Y\methods\82Y080322S.M
 Title : SW846 8260

Signal : TIC: VY009863.D\data.ms

peak #	R.T. min	first scan	max scan	last scan	PK TY	peak height	corr. area	corr. % max.	% of total
1	2.253	69	71	75	rVB	376	541	1.38%	0.251%
2	3.942	344	348	354	rVB2	365	664	1.70%	0.309%
3	4.192	382	389	396	rBV3	405	1046	2.67%	0.486%
4	4.710	466	474	481	rBV3	920	2526	6.46%	1.174%
5	6.966	835	844	845	rBV3	3081	5314	13.58%	2.470%
6	7.704	959	965	972	rBV3	4491	10491	26.81%	4.877%
7	7.783	972	978	987	rVB2	9051	20137	51.46%	9.361%
8	8.112	1023	1032	1046	rVB4	7833	24987	63.85%	11.616%
9	8.685	1116	1126	1133	rBV	14261	28647	73.21%	13.317%
10	10.173	1363	1370	1380	rBV	15287	26744	68.34%	12.432%
11	10.581	1431	1437	1444	rBB3	998	2093	5.35%	0.973%
12	10.947	1492	1497	1501	rBV	1262	1934	4.94%	0.899%
13	11.319	1553	1558	1563	rBV	1339	1842	4.71%	0.856%
14	11.489	1579	1586	1593	rVB	23724	39131	100.00%	18.191%
15	12.477	1743	1748	1757	rVB2	10812	17249	44.08%	8.019%
16	13.422	1897	1903	1909	rVB	20619	30975	79.16%	14.399%
17	15.318	2210	2214	2219	rBV3	506	794	2.03%	0.369%

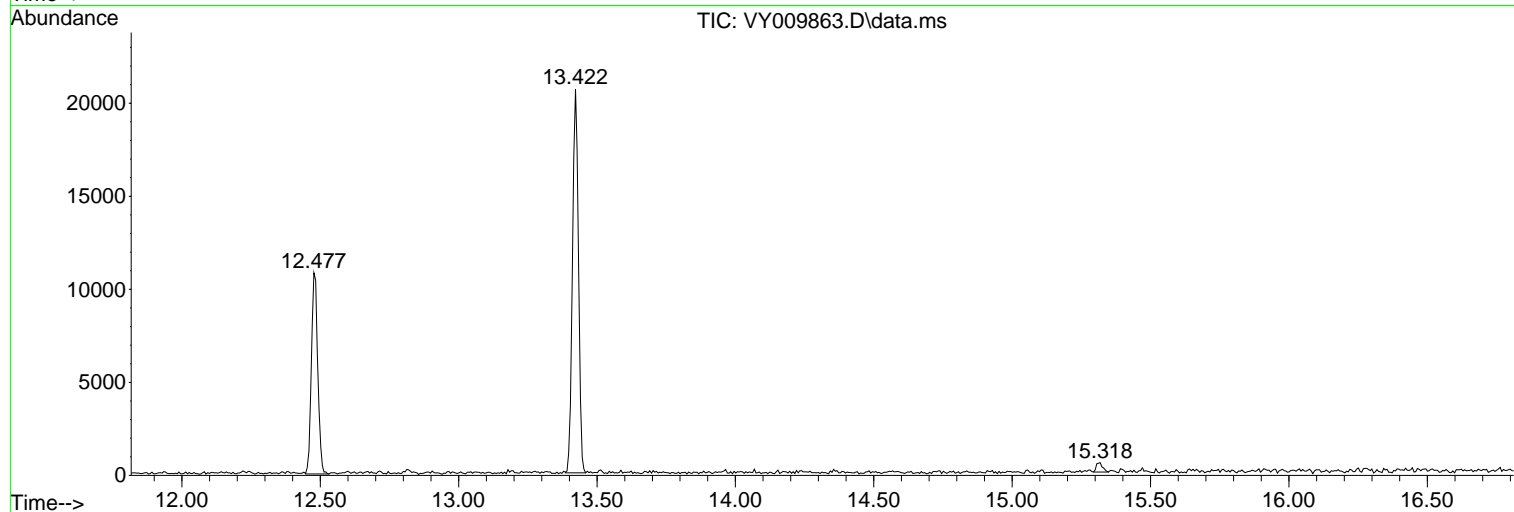
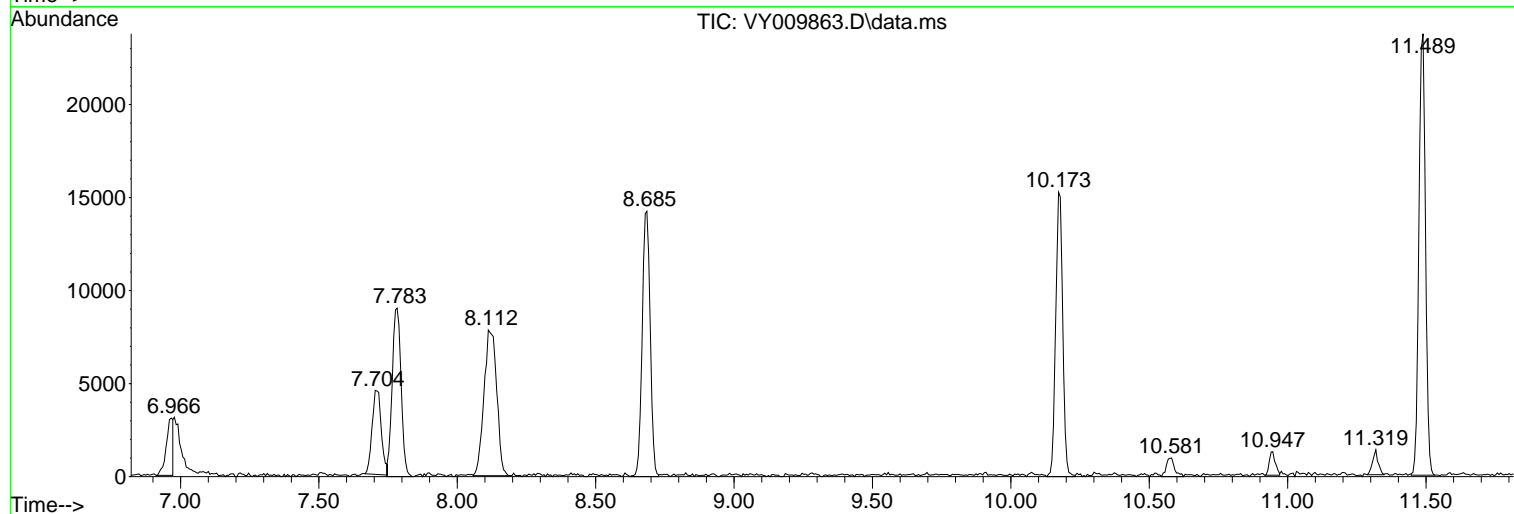
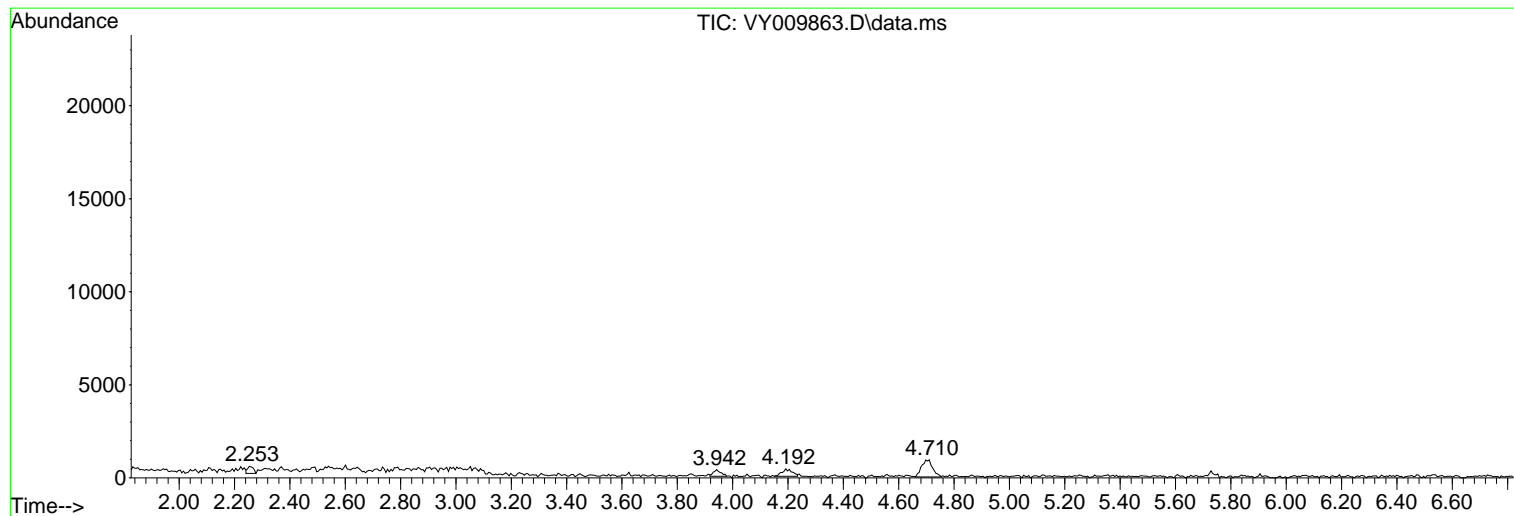
Sum of corrected areas: 215115

Data Path : Z:\voasrv\HPCHEM1\MSVOA_Y\Data\VY080522\
Data File : VY009863.D
Acq On : 05 Aug 2022 20:09
Operator : KP/MD
Sample : N4064-02
Misc : 5.06g/5.0mL/MSVOA_Y/SOIL
ALS Vial : 15 Sample Multiplier: 1

Instrument :
MSVOA_Y
ClientSampleId :
SB-02

Quant Method : Z:\voasrv\HPCHEM1\MSVOA_Y\methods\82Y080322S.M
Quant Title : SW846 8260

TIC Library : C:\Database\NIST20.L
TIC Integration Parameters: LSCINT.P



Data Path : Z:\voasrv\HPCHEM1\MSVOA_Y\Data\VY080522\
 Data File : VY009863.D
 Acq On : 05 Aug 2022 20:09
 Operator : KP/MD
 Sample : N4064-02
 Misc : 5.06g/5.0mL/MSVOA_Y/SOIL
 ALS Vial : 15 Sample Multiplier: 1

Instrument :
 MSVOA_Y
 ClientSampleId :
 SB-02

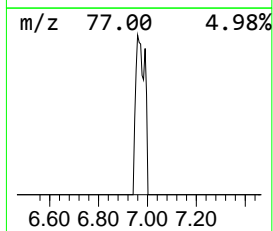
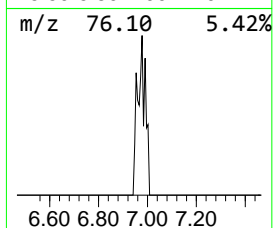
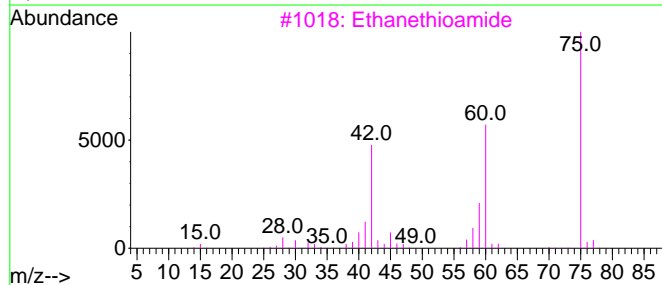
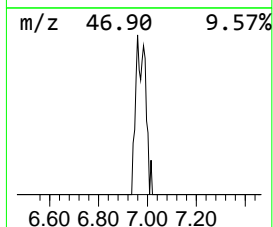
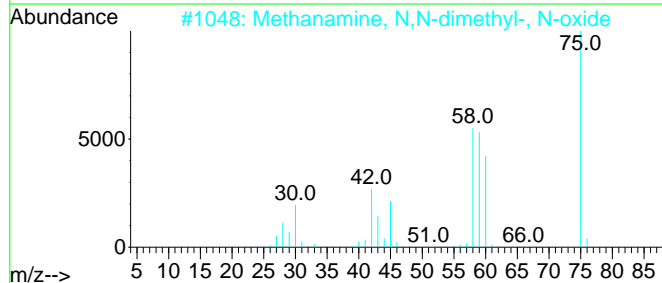
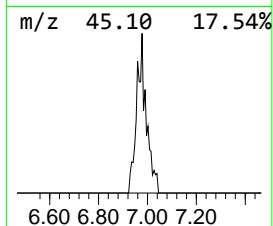
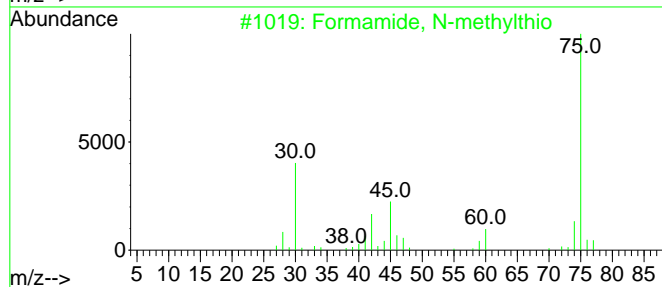
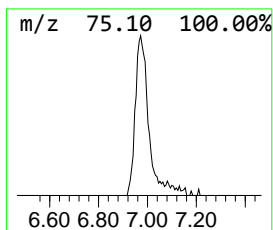
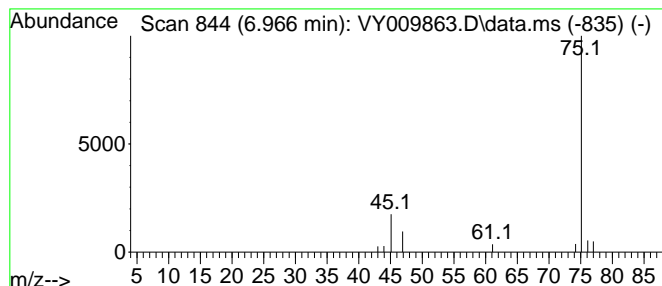
Quant Method : Z:\voasrv\HPCHEM1\MSVOA_Y\methods\82Y080322S.M
 Quant Title : SW846 8260

TIC Library : C:\Database\NIST20.L
 TIC Integration Parameters: LSCINT.P

 Peak Number 2 Formamide, N-methylthio Concentration Rank 1

R.T.	EstConc	Area	Relative to ISTD	R.T.
6.966	13.19 ug/l	5314	Pentafluorobenzene	7.777

Hit#	of	5	Tentative ID	MW	MolForm	CAS#	Qual
1			Formamide, N-methylthio	75	C2H5NS	018952-41-5	83
2			Methanamine, N,N-dimethyl-, N-oxide	75	C3H9NO	001184-78-7	9
3			Ethanethioamide	75	C2H5NS	000062-55-5	7
4			Silanol, trimethyl-	90	C3H10OSi	001066-40-6	4
5			Ethanol, 2-(trimethylsilyl)-	118	C5H14OSi	002916-68-9	4



Data Path : Z:\voasrv\HPCHEM1\MSVOA_Y\Data\VY080522\
Data File : VY009863.D
Acq On : 05 Aug 2022 20:09
Operator : KP/MD
Sample : N4064-02
Misc : 5.06g/5.0mL/MSVOA_Y/SOIL
ALS Vial : 15 Sample Multiplier: 1

Instrument :
MSVOA_Y
ClientSampleId :
SB-02

Quant Method : Z:\voasrv\HPCHEM1\MSVOA_Y\methods\82Y080322S.M
Quant Title : SW846 8260

TIC Library : C:\Database\NIST20.L
TIC Integration Parameters: LSCINT.P

TIC Top Hit name	RT	EstConc	Units	Response	--Internal Standard--			
					#	RT	Resp	Conc
Formamide, N-me...	6.966	13.2	ug/l	5314	1	7.777	20137	50.0