

Data Path : Z:\voasrv\HPCHEM1\MSVOA\_Y\Data\VY080822\  
 Data File : VY009908.D  
 Acq On : 09 Aug 2022 05:07  
 Operator : KP/MD  
 Sample : N3962-15  
 Misc : 3.11g/5.0mL/MSVOA\_Y/SOIL  
 ALS Vial : 38 Sample Multiplier: 1

Instrument :  
 MSVOA\_Y  
 ClientSampleId :  
 BFB

Quant Time: Aug 09 07:02:16 2022  
 Quant Method : Z:\voasrv\HPCHEM1\MSVOA\_Y\methods\82Y080822S.M  
 Quant Title : SW846 8260  
 QLast Update : Mon Aug 08 17:55:50 2022  
 Response via : Initial Calibration

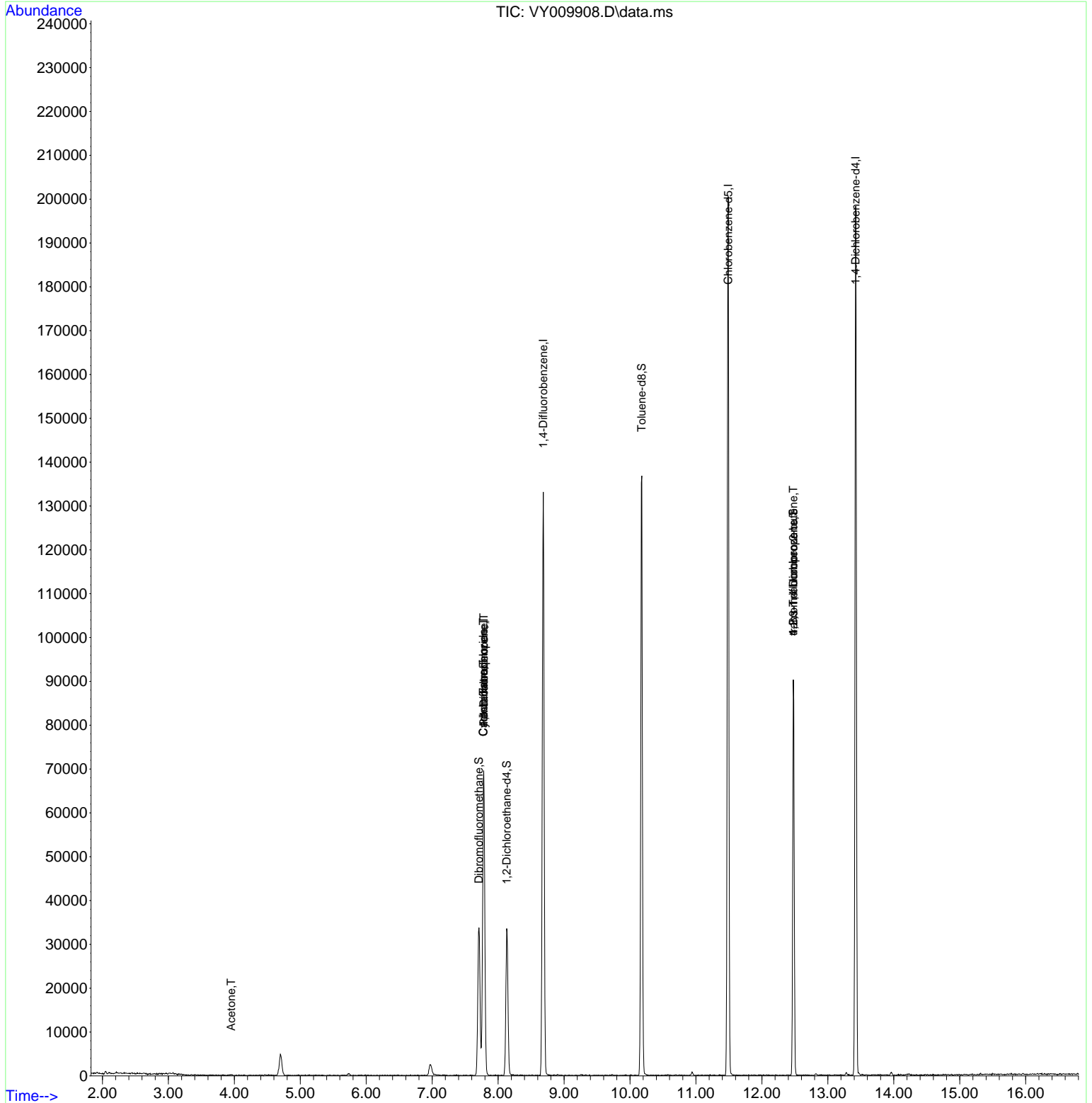
Compound	R.T.	QIon	Response	Conc	Units	Dev(Min)
-----						
Internal Standards						
1) Pentafluorobenzene	7.783	168	53655	50.000	ug/l	0.00
34) 1,4-Difluorobenzene	8.685	114	111160	50.000	ug/l	0.00
63) Chlorobenzene-d5	11.490	117	107239	50.000	ug/l	0.00
72) 1,4-Dichlorobenzene-d4	13.422	152	48308	50.000	ug/l	0.00
System Monitoring Compounds						
33) 1,2-Dichloroethane-d4	8.130	65	24716	59.991	ug/l	0.00
Spiked Amount	50.000	Range	50 - 163	Recovery	=	119.980%
35) Dibromofluoromethane	7.710	113	24035	39.831	ug/l	0.00
Spiked Amount	50.000	Range	54 - 147	Recovery	=	79.660%
50) Toluene-d8	10.179	98	87589	47.595	ug/l	0.00
Spiked Amount	50.000	Range	49 - 140	Recovery	=	95.200%
62) 4-Bromofluorobenzene	12.477	95	26634	31.611	ug/l	0.00
Spiked Amount	50.000	Range	25 - 144	Recovery	=	63.220%
Target Compounds						
					Qvalue	
16) Acetone	3.954	43	173	1.143	ug/l #	45
18) Methyl Acetate	4.460	43	163	Below Cal	#	52
20) Methylene Chloride	4.698	84	3337	Below Cal	#	89
31) Cyclohexane	7.777	56	1242	1.192	ug/l #	3
36) 1,1-Dichloropropene	7.783	75	4388	4.310	ug/l #	49
38) Carbon Tetrachloride	7.777	117	5349	5.293	ug/l #	16
76) 1,2,3-Trichloropropane	12.477	75	13925	26.347	ug/l #	100
81) trans-1,4-Dichloro-2-b...	12.477	75	13925	53.266	ug/l #	13
-----						

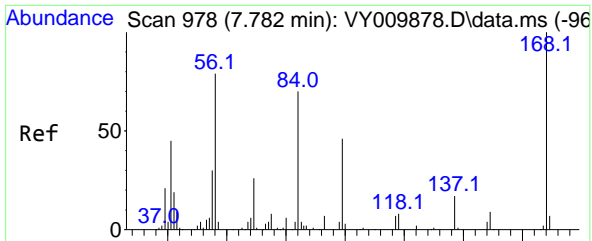
(#) = qualifier out of range (m) = manual integration (+) = signals summed

Data Path : Z:\voasrv\HPCHEM1\MSVOA\_Y\Data\VY080822\  
 Data File : VY009908.D  
 Acq On : 09 Aug 2022 05:07  
 Operator : KP/MD  
 Sample : N3962-15  
 Misc : 3.11g/5.0mL/MSVOA\_Y/SOIL  
 ALS Vial : 38 Sample Multiplier: 1

**Instrument :**  
 MSVOA\_Y  
**ClientSampleId :**  
 BFB

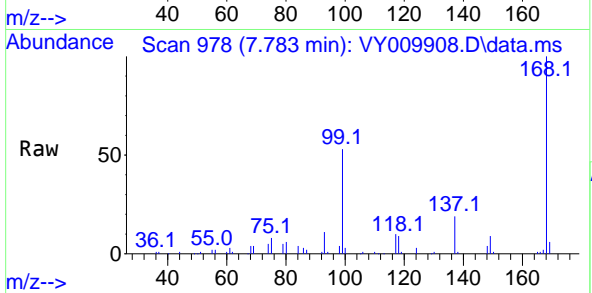
Quant Time: Aug 09 07:02:16 2022  
 Quant Method : Z:\voasrv\HPCHEM1\MSVOA\_Y\methods\82Y080822S.M  
 Quant Title : SW846 8260  
 QLast Update : Mon Aug 08 17:55:50 2022  
 Response via : Initial Calibration



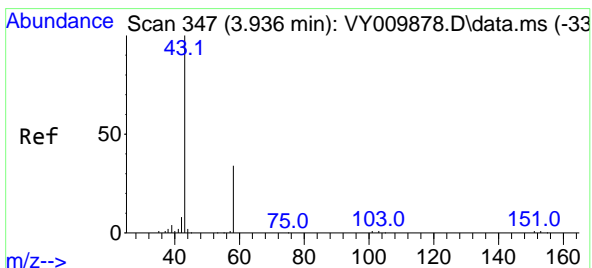
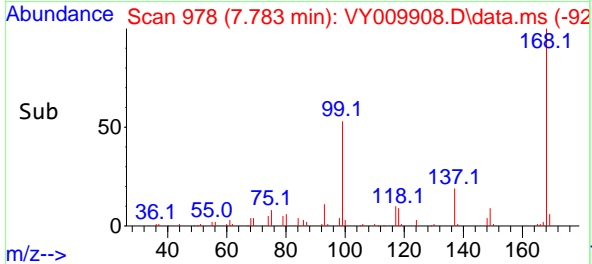
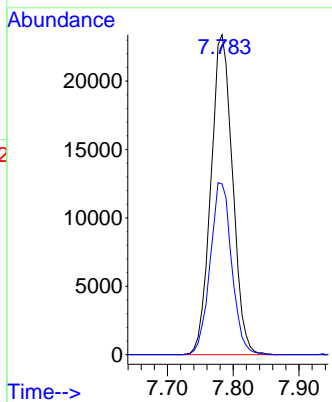


#1  
 Pentafluorobenzene  
 Concen: 50.000 ug/l  
 RT: 7.783 min Scan# 91  
 Delta R.T. 0.001 min  
 Lab File: VY009908.D  
 Acq: 09 Aug 2022 05:07

Instrument :  
 MSVOA\_Y  
 ClientSampleId :  
 BFB

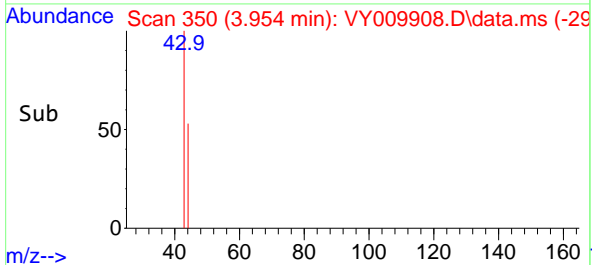
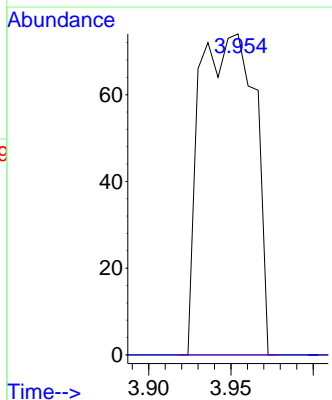
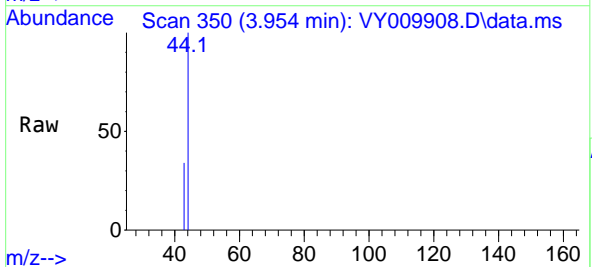


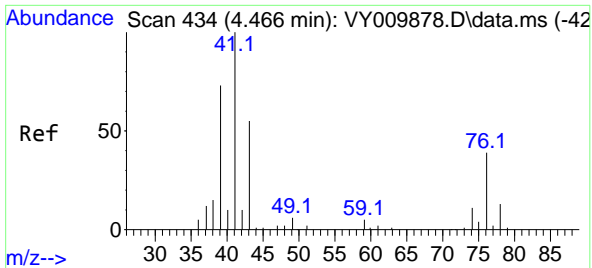
Tgt Ion:168 Resp: 53655  
 Ion Ratio Lower Upper  
 168 100  
 99 53.3 42.1 63.1



#16  
 Acetone  
 Concen: 1.143 ug/l  
 RT: 3.954 min Scan# 350  
 Delta R.T. 0.018 min  
 Lab File: VY009908.D  
 Acq: 09 Aug 2022 05:07

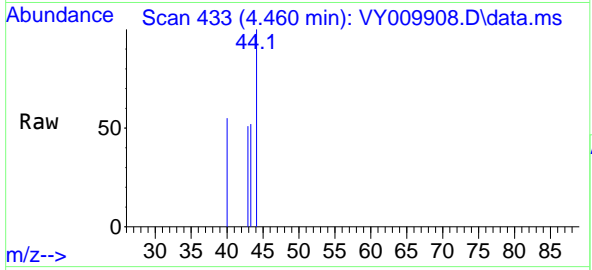
Tgt Ion: 43 Resp: 173  
 Ion Ratio Lower Upper  
 43 100  
 58 0.0 24.0 36.0#



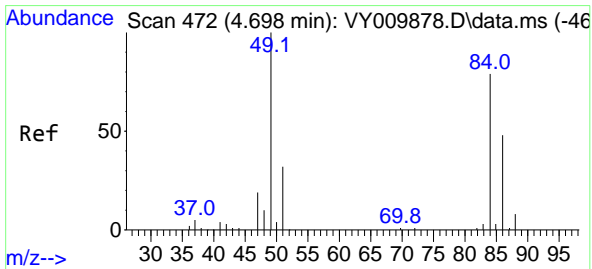
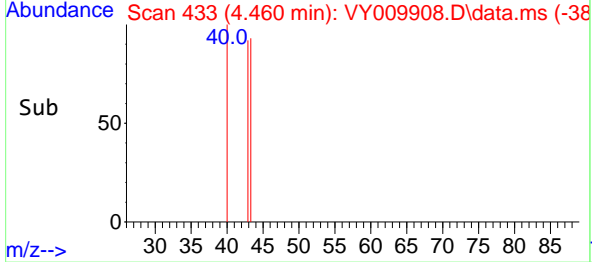
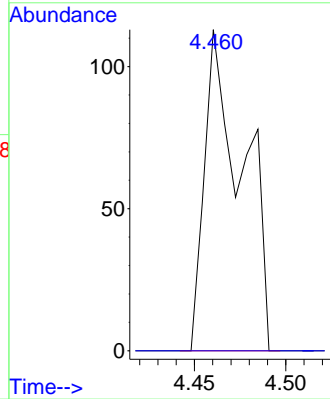


#18  
 Methyl Acetate  
 Concen: Below Cal  
 RT: 4.460 min Scan# 41  
 Delta R.T. -0.006 min  
 Lab File: VY009908.D  
 Acq: 09 Aug 2022 05:07

Instrument :  
 MSVOA\_Y  
 ClientSampleId :  
 BFB

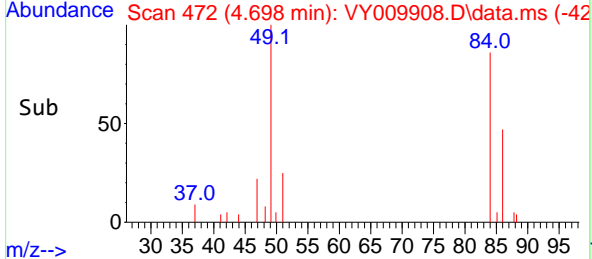
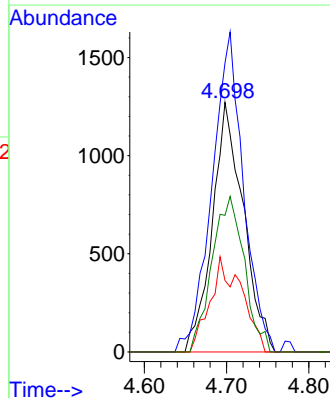
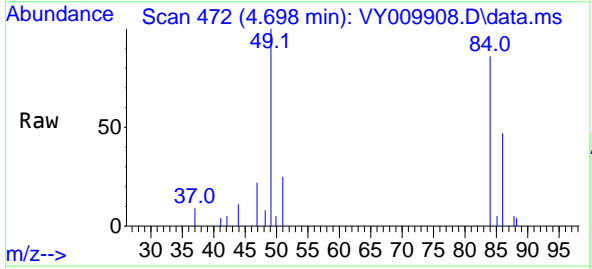


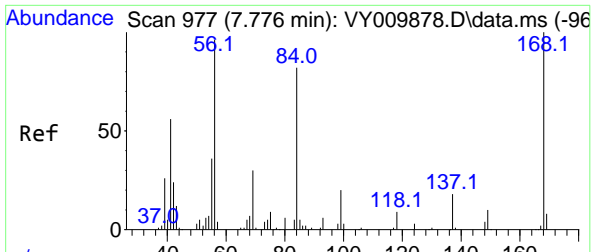
Tgt Ion: 43 Resp: 163  
 Ion Ratio Lower Upper  
 43 100  
 74 0.0 18.8 28.2#



#20  
 Methylene Chloride  
 Concen: Below Cal  
 RT: 4.698 min Scan# 472  
 Delta R.T. 0.000 min  
 Lab File: VY009908.D  
 Acq: 09 Aug 2022 05:07

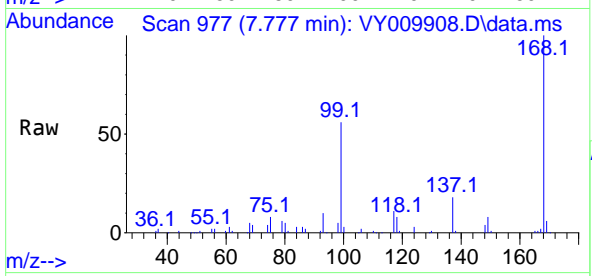
Tgt Ion: 84 Resp: 3337  
 Ion Ratio Lower Upper  
 84 100  
 49 115.8 98.2 147.4  
 51 28.6 33.4 50.0#  
 86 54.8 52.3 78.5



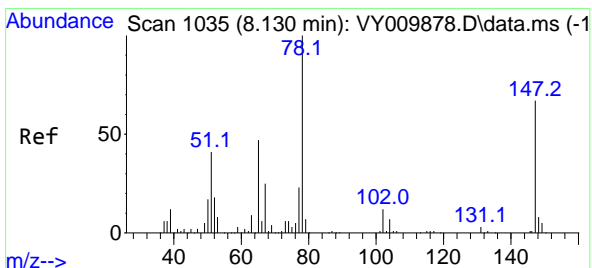
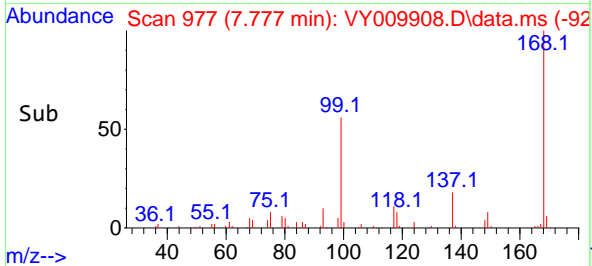
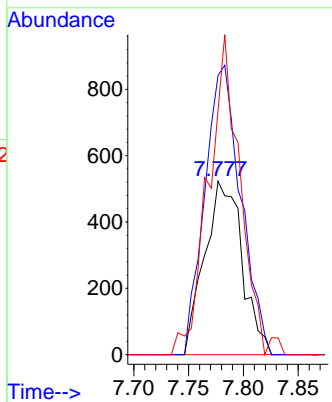


#31  
 Cyclohexane  
 Concen: 1.192 ug/l  
 RT: 7.777 min Scan# 91  
 Delta R.T. 0.001 min  
 Lab File: VY009908.D  
 Acq: 09 Aug 2022 05:07

Instrument :  
 MSVOA\_Y  
 ClientSampleId :  
 BFB

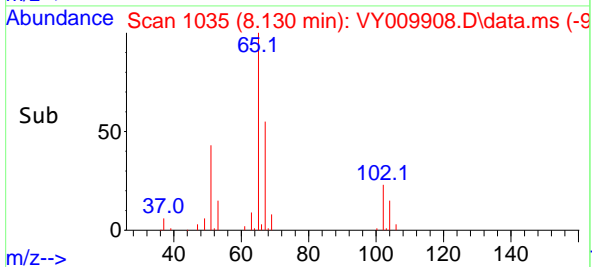
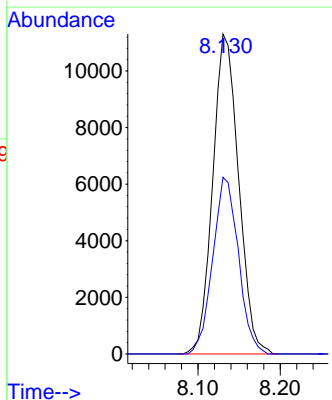
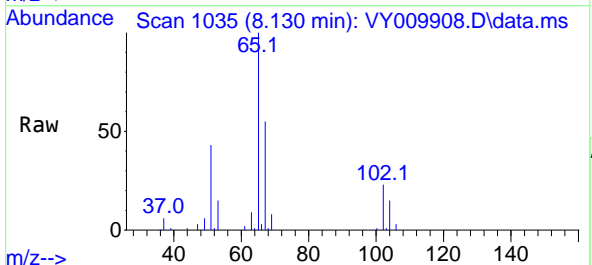


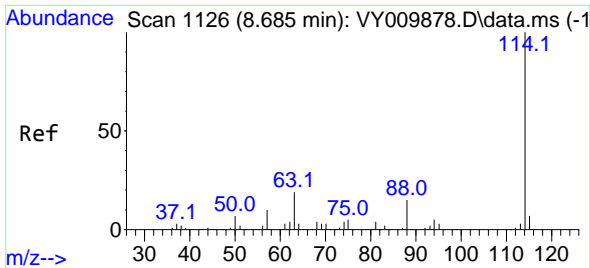
Tgt Ion: 56 Resp: 1242  
 Ion Ratio Lower Upper  
 56 100  
 69 161.0 26.0 39.0#  
 84 131.4 69.5 104.3#



#33  
 1,2-Dichloroethane-d4  
 Concen: 59.991 ug/l  
 RT: 8.130 min Scan# 1035  
 Delta R.T. 0.000 min  
 Lab File: VY009908.D  
 Acq: 09 Aug 2022 05:07

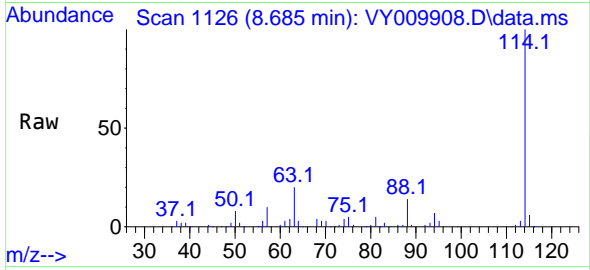
Tgt Ion: 65 Resp: 24716  
 Ion Ratio Lower Upper  
 65 100  
 67 54.8 0.0 108.4



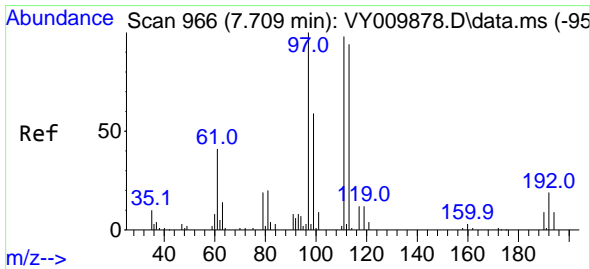
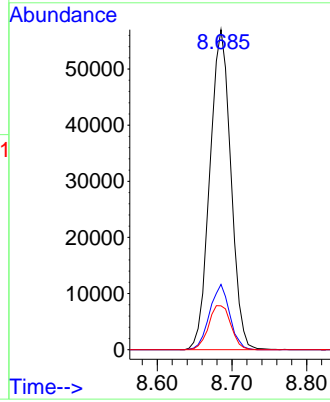
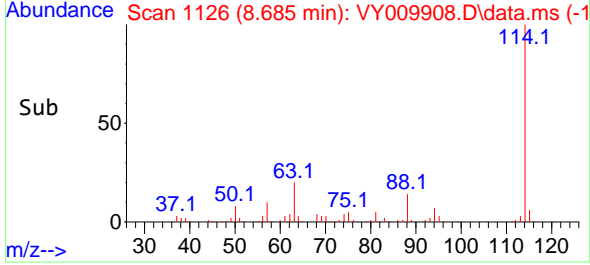


#34  
 1,4-Difluorobenzene  
 Concen: 50.000 ug/l  
 RT: 8.685 min Scan# 1126  
 Delta R.T. 0.000 min  
 Lab File: VY009908.D  
 Acq: 09 Aug 2022 05:07

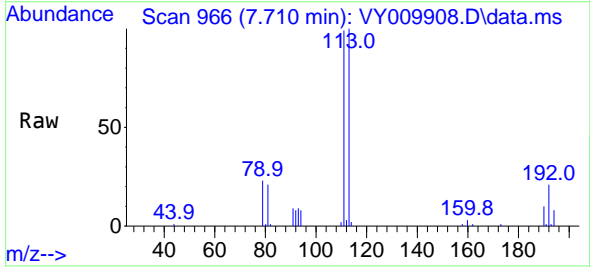
Instrument : MSVOA\_Y  
 ClientSampleId : BFB



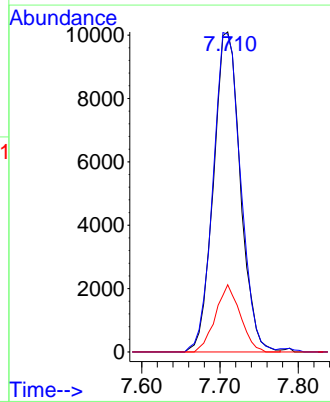
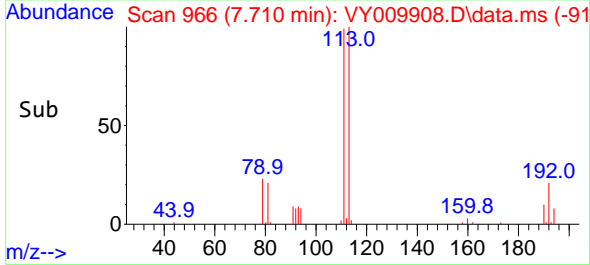
Tgt Ion:114 Resp: 111160  
 Ion Ratio Lower Upper  
 114 100  
 63 20.4 0.0 38.0  
 88 13.7 0.0 30.0

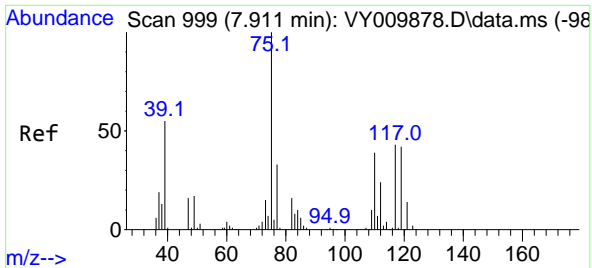


#35  
 Dibromofluoromethane  
 Concen: 39.831 ug/l  
 RT: 7.710 min Scan# 966  
 Delta R.T. 0.001 min  
 Lab File: VY009908.D  
 Acq: 09 Aug 2022 05:07



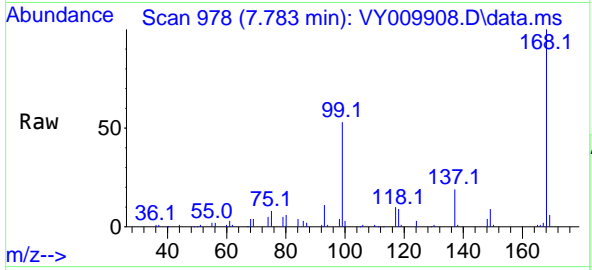
Tgt Ion:113 Resp: 24035  
 Ion Ratio Lower Upper  
 113 100  
 111 101.8 80.6 120.8  
 192 19.4 16.2 24.4



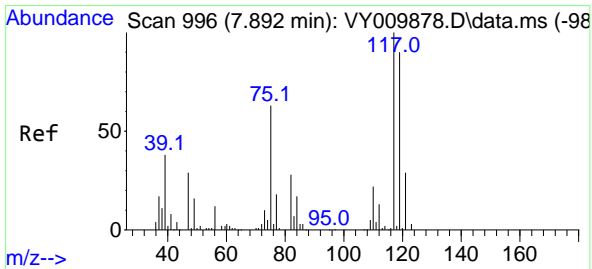
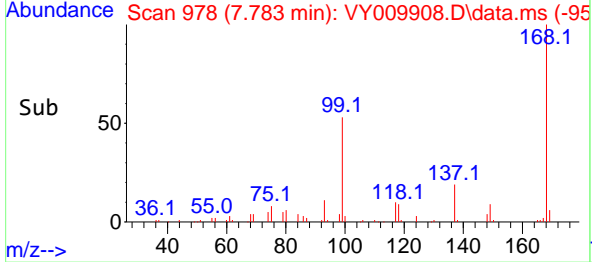
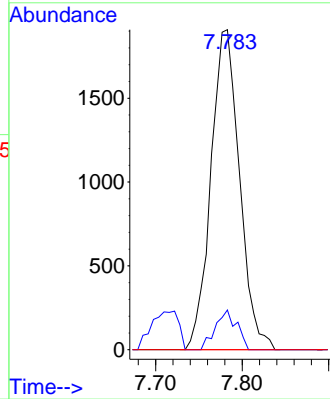


#36  
 1,1-Dichloropropene  
 Concen: 4.310 ug/l  
 RT: 7.783 min Scan# 91  
 Delta R.T. -0.128 min  
 Lab File: VY009908.D  
 Acq: 09 Aug 2022 05:07

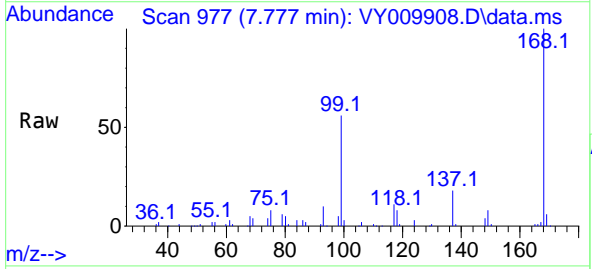
Instrument : MSVOA\_Y  
 ClientSampleId : BFB



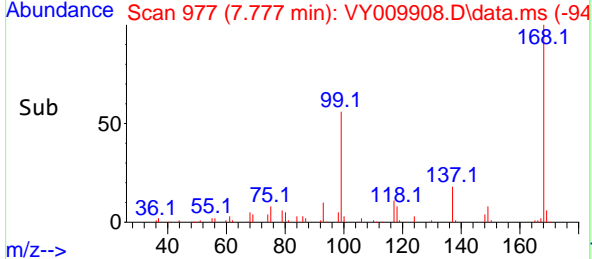
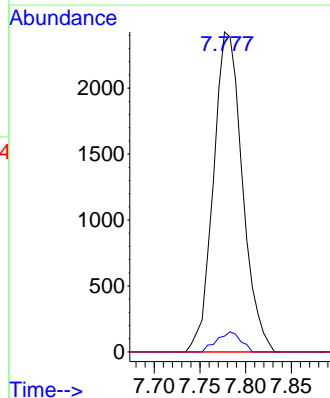
Tgt Ion: 75 Resp: 4388  
 Ion Ratio Lower Upper  
 75 100  
 110 9.2 18.6 56.0#  
 77 0.0 25.0 37.4#

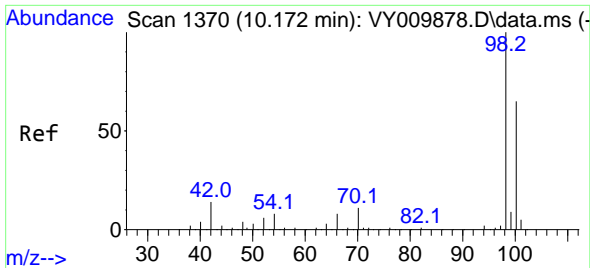


#38  
 Carbon Tetrachloride  
 Concen: 5.293 ug/l  
 RT: 7.777 min Scan# 977  
 Delta R.T. -0.115 min  
 Lab File: VY009908.D  
 Acq: 09 Aug 2022 05:07



Tgt Ion: 117 Resp: 5349  
 Ion Ratio Lower Upper  
 117 100  
 119 4.9 75.9 113.9#  
 121 0.0 24.9 37.3#

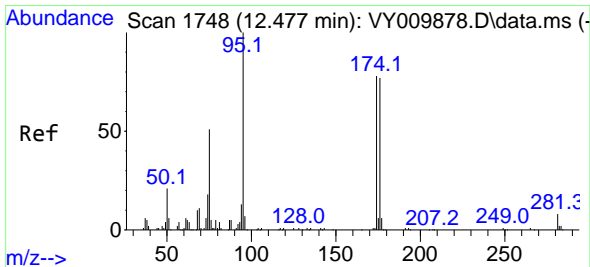
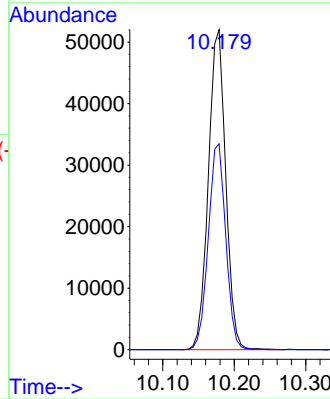
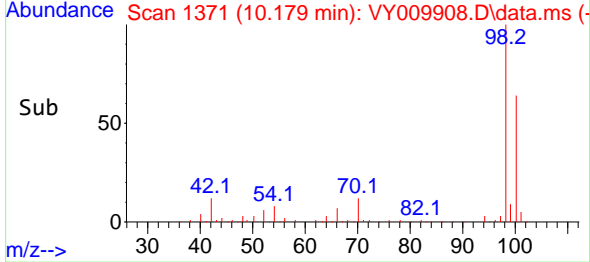
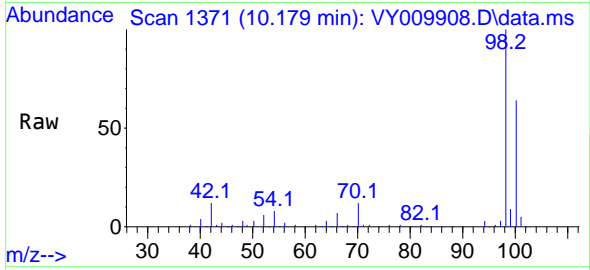




#50  
 Toluene-d8  
 Concen: 47.595 ug/l  
 RT: 10.179 min Scan# 11  
 Delta R.T. 0.007 min  
 Lab File: VY009908.D  
 Acq: 09 Aug 2022 05:07

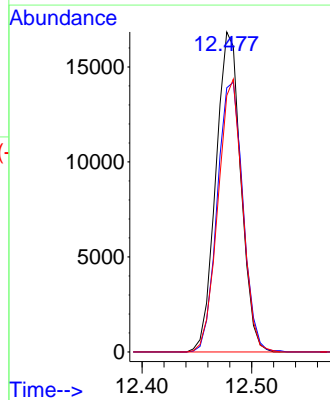
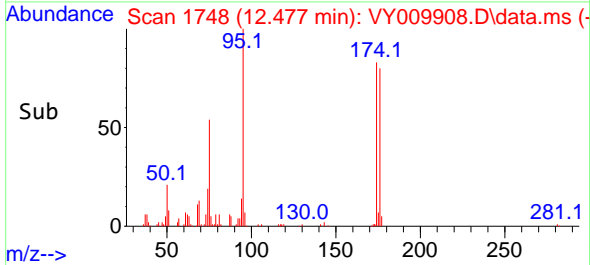
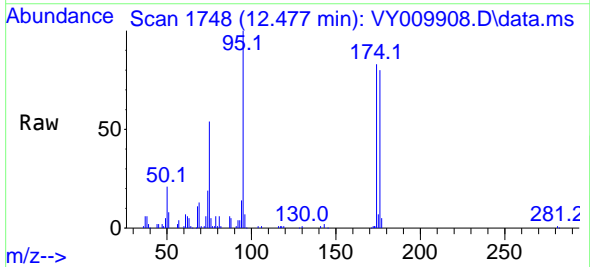
Instrument :  
 MSVOA\_Y  
 ClientSampleId :  
 BFB

Tgt Ion: 98 Resp: 87589  
 Ion Ratio Lower Upper  
 98 100  
 100 64.8 52.9 79.3

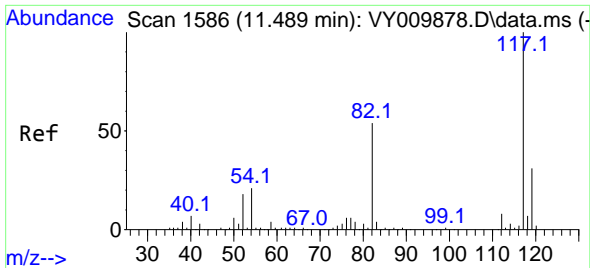


#62  
 4-Bromofluorobenzene  
 Concen: 31.611 ug/l  
 RT: 12.477 min Scan# 1748  
 Delta R.T. 0.000 min  
 Lab File: VY009908.D  
 Acq: 09 Aug 2022 05:07

Tgt Ion: 95 Resp: 26634  
 Ion Ratio Lower Upper  
 95 100  
 174 86.7 0.0 173.8  
 176 83.8 0.0 167.0

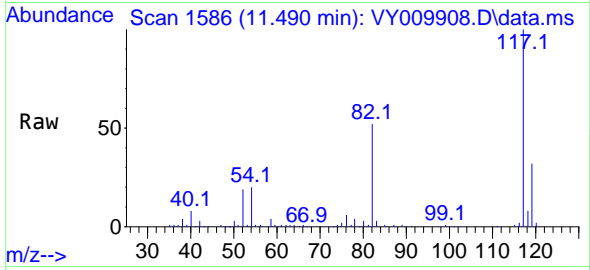




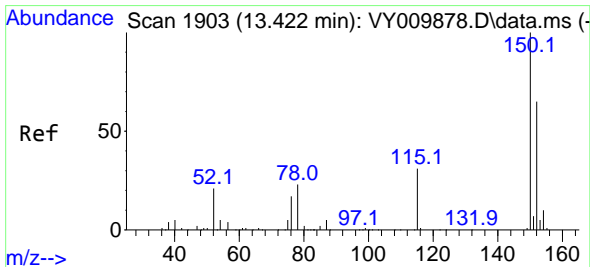
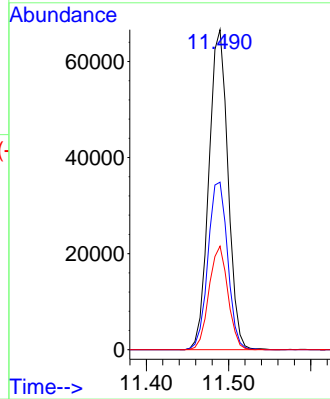
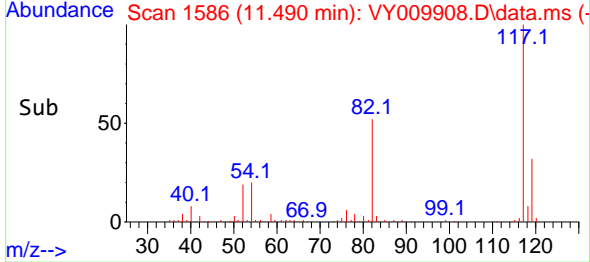


#63  
 Chlorobenzene-d5  
 Concen: 50.000 ug/l  
 RT: 11.490 min Scan# 111  
 Delta R.T. 0.001 min  
 Lab File: VY009908.D  
 Acq: 09 Aug 2022 05:07

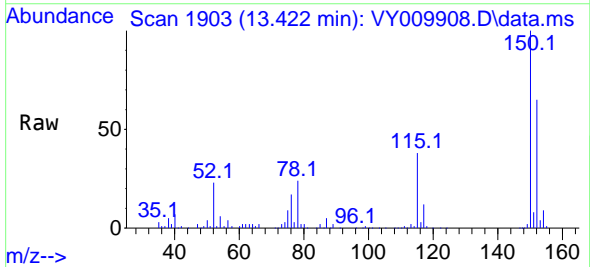
Instrument :  
 MSVOA\_Y  
 ClientSampleId :  
 BFB



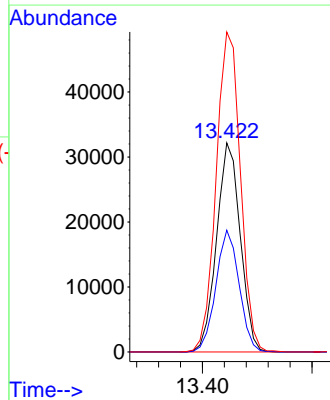
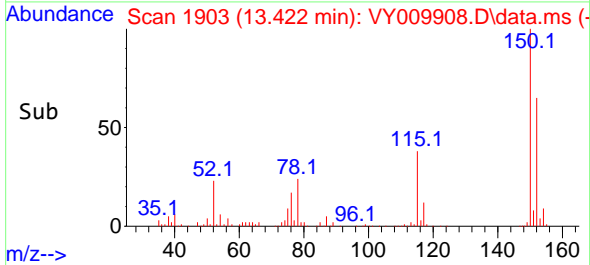
Tgt Ion:117 Resp: 107239  
 Ion Ratio Lower Upper  
 117 100  
 82 52.4 41.8 62.6  
 119 32.4 25.6 38.4

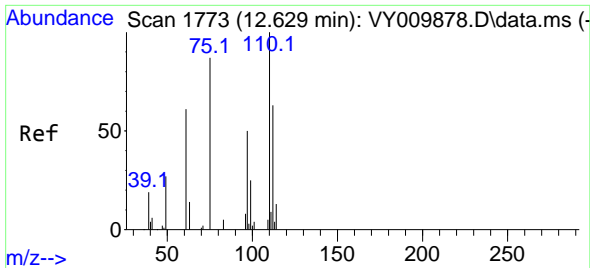


#72  
 1,4-Dichlorobenzene-d4  
 Concen: 50.000 ug/l  
 RT: 13.422 min Scan# 1903  
 Delta R.T. 0.000 min  
 Lab File: VY009908.D  
 Acq: 09 Aug 2022 05:07



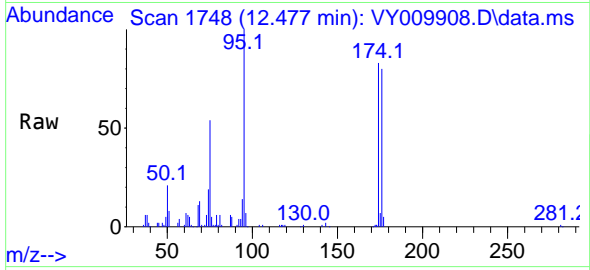
Tgt Ion:152 Resp: 48308  
 Ion Ratio Lower Upper  
 152 100  
 115 57.2 28.6 85.9  
 150 156.8 0.0 349.8



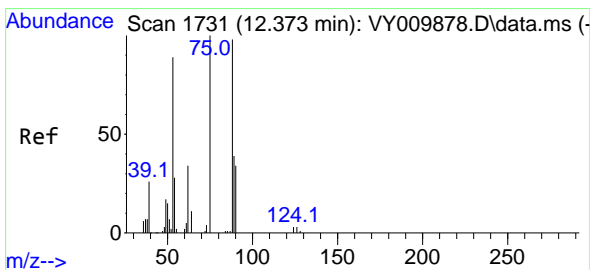
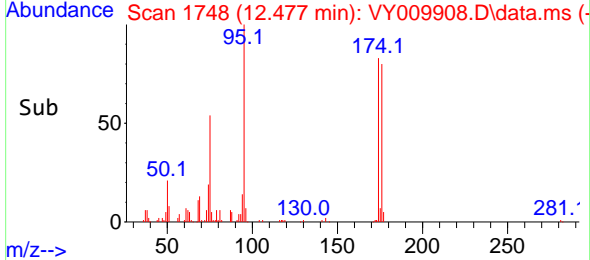
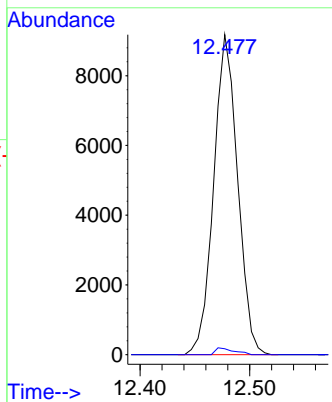


#76  
 1,2,3-Trichloropropane  
 Concen: 26.347 ug/l  
 RT: 12.477 min Scan# 1748  
 Delta R.T. -0.152 min  
 Lab File: VY009908.D  
 Acq: 09 Aug 2022 05:07

Instrument : MSVOA\_Y  
 ClientSampleId : BFB



Tgt Ion: 75 Resp: 13925  
 Ion Ratio Lower Upper  
 75 100  
 77 1.7 0.0 0.0#



#81  
 trans-1,4-Dichloro-2-butene  
 Concen: 53.266 ug/l  
 RT: 12.477 min Scan# 1748  
 Delta R.T. 0.104 min  
 Lab File: VY009908.D  
 Acq: 09 Aug 2022 05:07

Tgt Ion: 75 Resp: 13925  
 Ion Ratio Lower Upper  
 75 100  
 53 0.0 71.4 107.2#  
 89 0.0 38.1 57.1#

