

Data Path : Z:\voasrv\HPCHEM1\MSVOA_Y\Data\VY080922\
 Data File : VY009938.D
 Acq On : 10 Aug 2022 00:07
 Operator : KP/MD
 Sample : N4017-01
 Misc : 5.68g/5.0mL/MSVOA_Y/SOIL
 ALS Vial : 36 Sample Multiplier: 1

Instrument :
 MSVOA_Y
 ClientSampleId :
 SB08

Integration Parameters: RTEINT.P

Integrator: RTE
 Smoothing : ON Filtering: 5
 Sampling : 1 Min Area: 3 % of largest Peak
 Start Thrs: 0.2 Max Peaks: 100
 Stop Thrs : 0 Peak Location: TOP

If leading or trailing edge < 100 prefer < Baseline drop else tangent >
 Peak separation: 5

Method : Z:\voasrv\HPCHEM1\MSVOA_Y\methods\82Y080822S.M
 Title : SW846 8260

Signal : TIC: VY009938.D\data.ms

peak #	R.T. min	first scan	max scan	last scan	PK TY	peak height	corr. area	corr. % max.	% of total
1	1.857	3	6	13	rVB2	6381	8801	1.93%	0.404%
2	2.204	59	63	70	rBV3	3166	6099	1.34%	0.280%
3	4.698	460	472	485	rBV2	9213	28051	6.16%	1.289%
4	7.710	956	966	971	rBV	38987	92073	20.22%	4.230%
5	7.783	971	978	989	rVB	98227	223202	49.01%	10.254%
6	8.130	1026	1035	1045	rBV	39904	90190	19.80%	4.143%
7	8.685	1117	1126	1135	rBV	178687	351521	77.18%	16.149%
8	10.173	1362	1370	1378	rBV	168455	285960	62.78%	13.137%
9	11.483	1578	1585	1598	rVB	278202	455465	100.00%	20.925%
10	12.477	1742	1748	1757	rVB2	126550	205498	45.12%	9.441%
11	13.422	1896	1903	1912	rBV	295662	429835	94.37%	19.747%

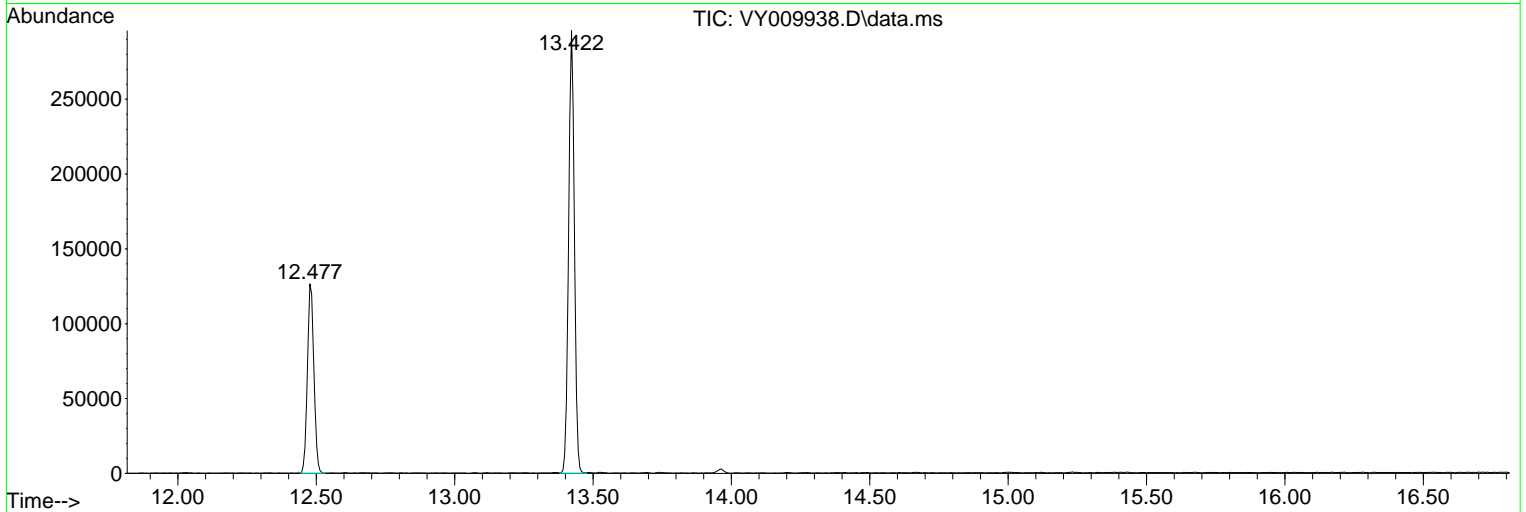
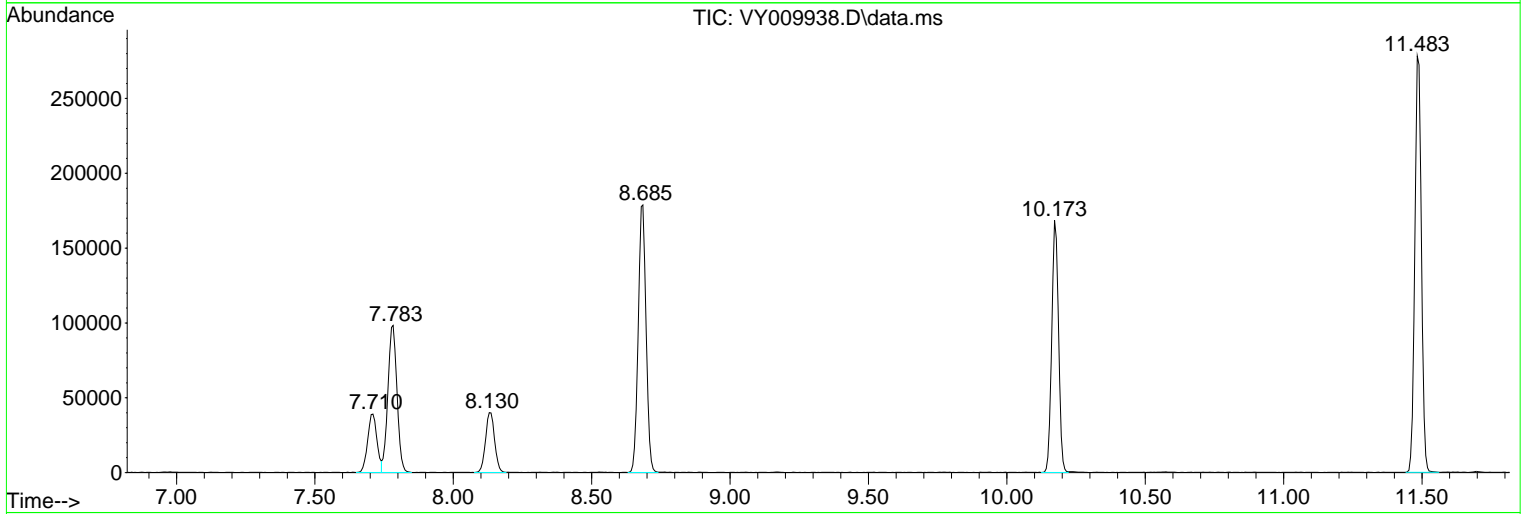
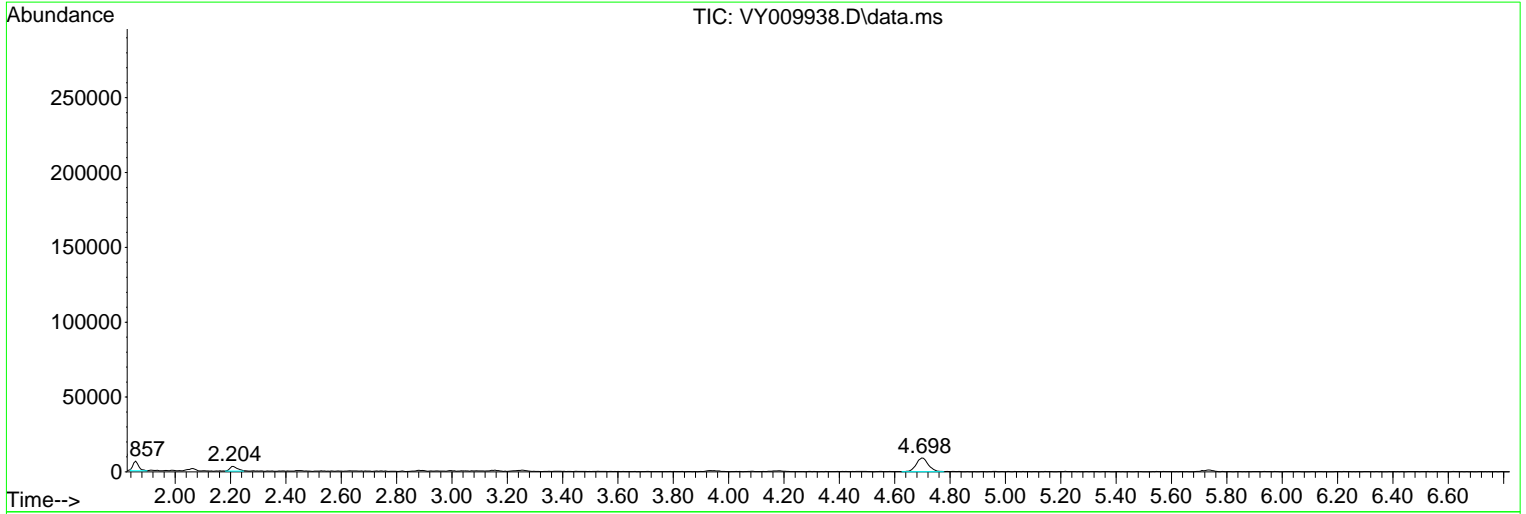
Sum of corrected areas: 2176695

Data Path : Z:\voasrv\HPCHEM1\MSVOA_Y\Data\VY080922\
 Data File : VY009938.D
 Acq On : 10 Aug 2022 00:07
 Operator : KP/MD
 Sample : N4017-01
 Misc : 5.68g/5.0mL/MSVOA_Y/SOIL
 ALS Vial : 36 Sample Multiplier: 1

Instrument :
 MSVOA_Y
 ClientSampleId :
 SB08

Quant Method : Z:\voasrv\HPCHEM1\MSVOA_Y\methods\82Y080822S.M
 Quant Title : SW846 8260

TIC Library : C:\Database\NIST20.L
 TIC Integration Parameters: LSCINT.P



Library Search Compound Report

Data Path : Z:\voasrv\HPCHEM1\MSVOA_Y\Data\VY080922\
Data File : VY009938.D
Acq On : 10 Aug 2022 00:07
Operator : KP/MD
Sample : N4017-01
Misc : 5.68g/5.0mL/MSVOA_Y/SOIL
ALS Vial : 36 Sample Multiplier: 1

Instrument :
MSVOA_Y
ClientSampleId :
SB08

Quant Method : Z:\voasrv\HPCHEM1\MSVOA_Y\methods\82Y080822S.M
Quant Title : SW846 8260

TIC Library : C:\Database\NIST20.L
TIC Integration Parameters: LSCINT.P

No Library Search Compounds Detected

Data Path : Z:\voasrv\HPCHEM1\MSVOA_Y\Data\VY080922\
Data File : VY009938.D
Acq On : 10 Aug 2022 00:07
Operator : KP/MD
Sample : N4017-01
Misc : 5.68g/5.0mL/MSVOA_Y/SOIL
ALS Vial : 36 Sample Multiplier: 1

Instrument :
MSVOA_Y
ClientSampleId :
SB08

Quant Method : Z:\voasrv\HPCHEM1\MSVOA_Y\methods\82Y080822S.M
Quant Title : SW846 8260

TIC Library : C:\Database\NIST20.L
TIC Integration Parameters: LSCINT.P

TIC Top Hit name	RT	EstConc	Units	Response	--Internal Standard--			
					#	RT	Resp	Conc
