

Data Path : Z:\voasrv\HPCHEM1\MSVOA_Y\Data\VY110222\
 Data File : VY011264.D
 Acq On : 02 Nov 2022 15:49
 Operator : KP/MD
 Sample : N5395-08
 Misc : 5.12g/5.0mL/MSVOA_Y/SOIL
 ALS Vial : 18 Sample Multiplier: 1

Instrument :
 MSVOA_Y
 ClientSampleId :
 S-2-103122

Quant Time: Nov 03 05:17:09 2022
 Quant Method : Z:\voasrv\HPCHEM1\MSVOA_Y\methods\82Y110122S.M
 Quant Title : SW846 8260
 QLast Update : Tue Nov 01 11:56:18 2022
 Response via : Initial Calibration

Compound	R.T.	QIon	Response	Conc	Units	Dev(Min)

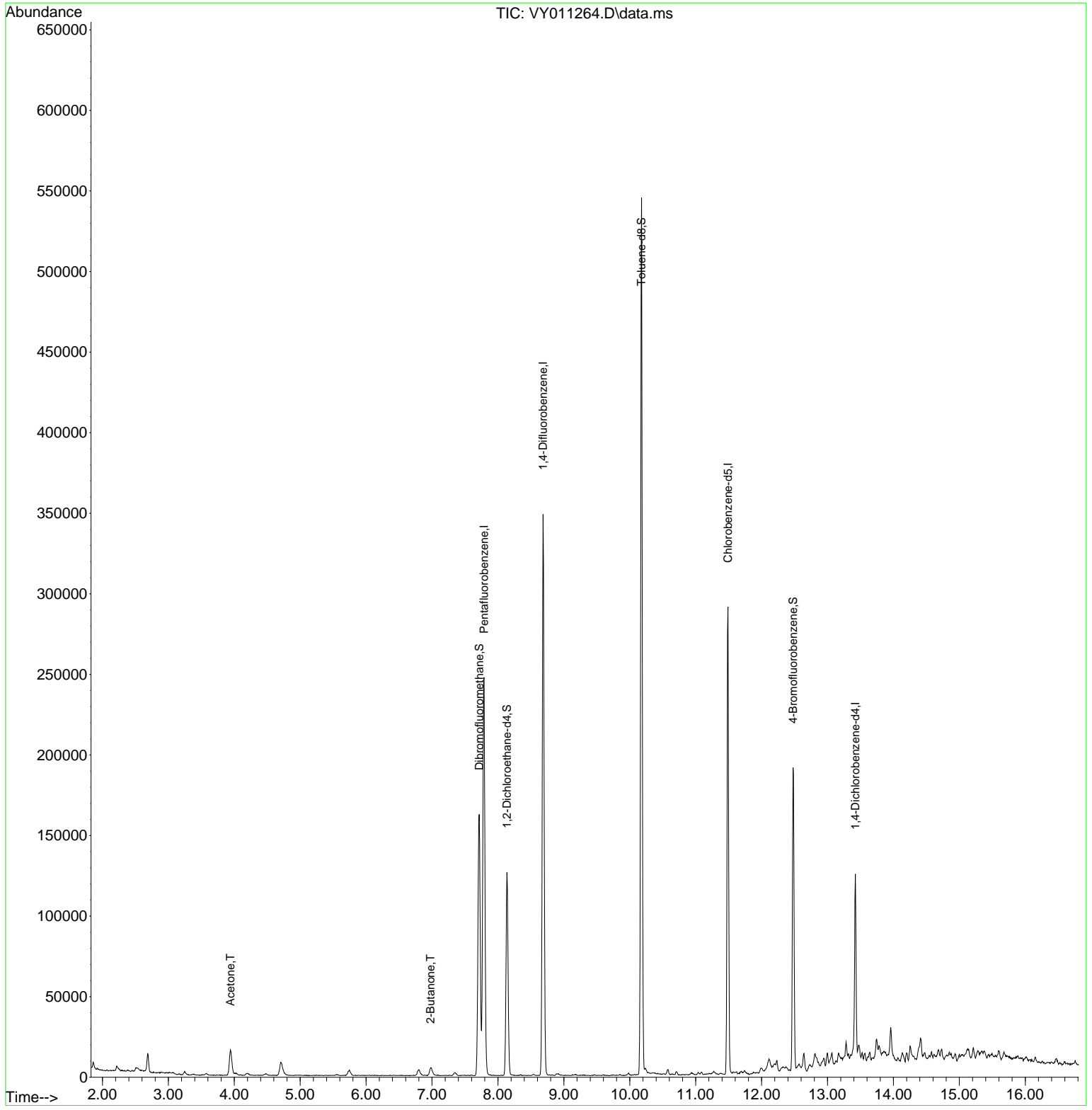
Internal Standards						
1) Pentafluorobenzene	7.789	168	196978	50.000	ug/l	0.00
34) 1,4-Difluorobenzene	8.685	114	304143	50.000	ug/l	0.00
63) Chlorobenzene-d5	11.489	117	165041	50.000	ug/l	0.00
72) 1,4-Dichlorobenzene-d4	13.422	152	30167	50.000	ug/l	0.00
System Monitoring Compounds						
33) 1,2-Dichloroethane-d4	8.136	65	95026	45.107	ug/l	0.00
Spiked Amount	50.000	Range	50 - 163	Recovery	=	90.220%
35) Dibromofluoromethane	7.716	113	119132	60.965	ug/l	0.00
Spiked Amount	50.000	Range	54 - 147	Recovery	=	121.920%
50) Toluene-d8	10.179	98	361155	47.602	ug/l	0.00
Spiked Amount	50.000	Range	49 - 140	Recovery	=	95.200%
62) 4-Bromofluorobenzene	12.477	95	58332	22.147	ug/l	0.00
Spiked Amount	50.000	Range	25 - 144	Recovery	=	44.300%
Target Compounds						
					Qvalue	
16) Acetone	3.942	43	27079	42.582	ug/l #	83
25) 2-Butanone	6.978	43	8360	9.343	ug/l #	90

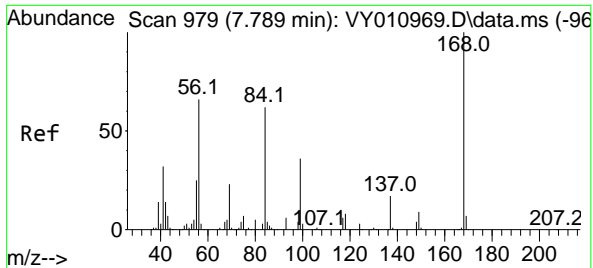
(#) = qualifier out of range (m) = manual integration (+) = signals summed

Data Path : Z:\voasrv\HPCHEM1\MSVOA_Y\Data\VY110222\
 Data File : VY011264.D
 Acq On : 02 Nov 2022 15:49
 Operator : KP/MD
 Sample : N5395-08
 Misc : 5.12g/5.0mL/MSVOA_Y/SOIL
 ALS Vial : 18 Sample Multiplier: 1

Instrument :
 MSVOA_Y
ClientSampleId :
 S-2-103122

Quant Time: Nov 03 05:17:09 2022
 Quant Method : Z:\voasrv\HPCHEM1\MSVOA_Y\methods\82Y110122S.M
 Quant Title : SW846 8260
 QLast Update : Tue Nov 01 11:56:18 2022
 Response via : Initial Calibration

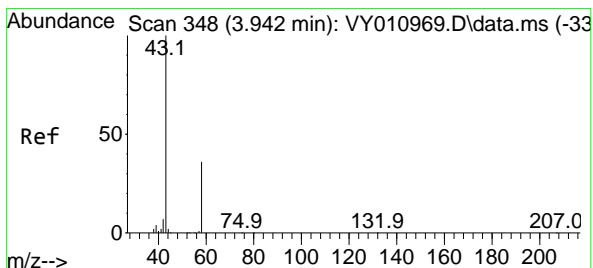
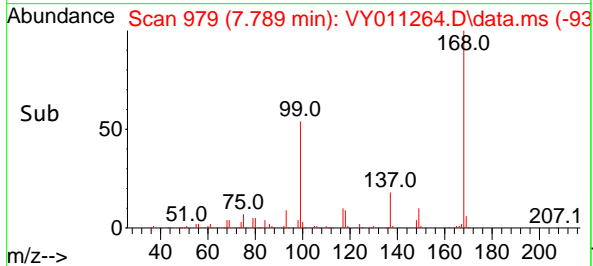
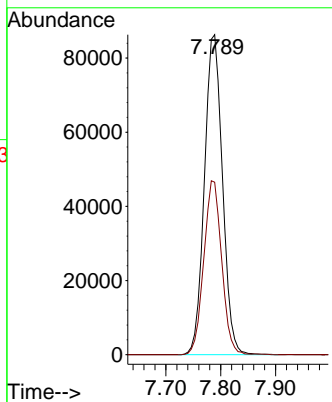
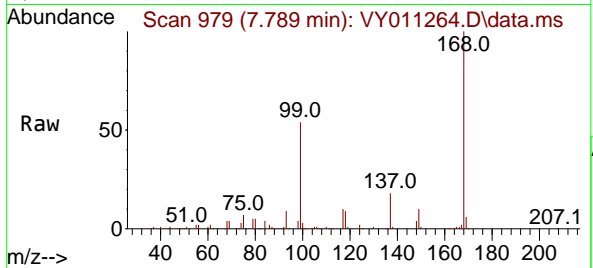




#1
 Pentafluorobenzene
 Concen: 50.000 ug/l
 RT: 7.789 min Scan# 91
 Delta R.T. -0.000 min
 Lab File: VY011264.D
 Acq: 02 Nov 2022 15:49

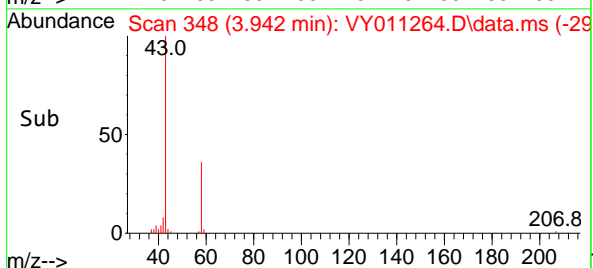
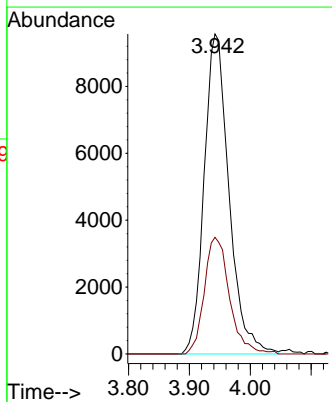
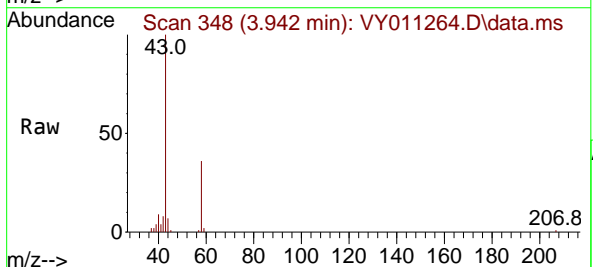
Instrument :
 MSVOA_Y
 ClientSampleId :
 S-2-103122

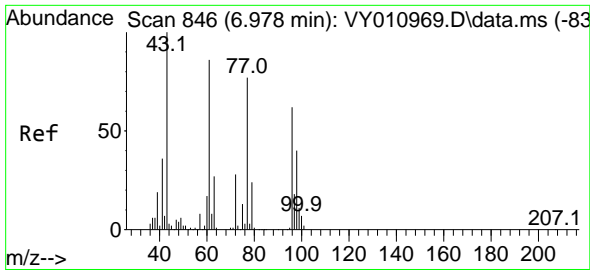
Tgt Ion:168 Resp: 196978
 Ion Ratio Lower Upper
 168 100
 99 53.9 46.9 70.3



#16
 Acetone
 Concen: 42.582 ug/l
 RT: 3.942 min Scan# 348
 Delta R.T. 0.000 min
 Lab File: VY011264.D
 Acq: 02 Nov 2022 15:49

Tgt Ion: 43 Resp: 27079
 Ion Ratio Lower Upper
 43 100
 58 36.5 22.0 33.0#

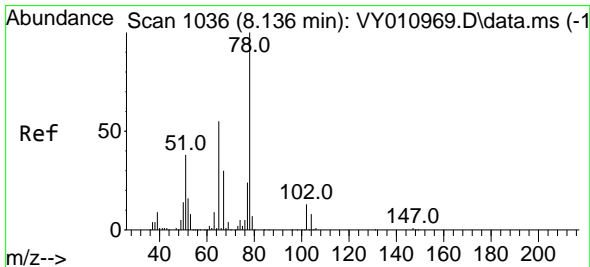
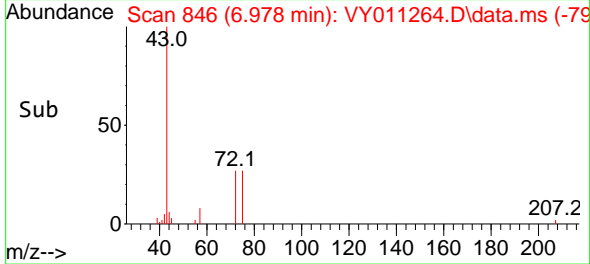
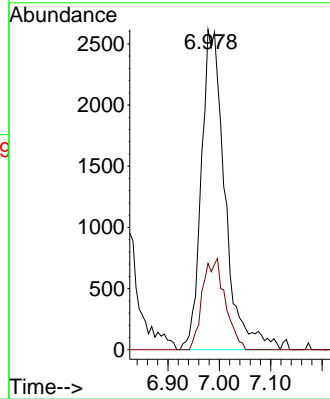
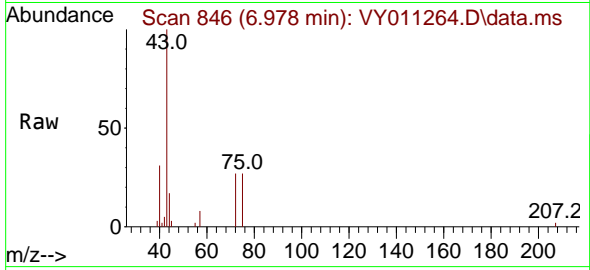




#25
 2-Butanone
 Concen: 9.343 ug/l
 RT: 6.978 min Scan# 846
 Delta R.T. 0.000 min
 Lab File: VY011264.D
 Acq: 02 Nov 2022 15:49

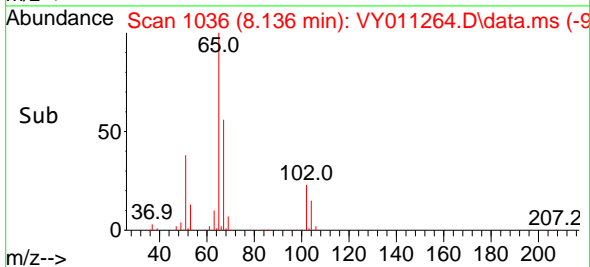
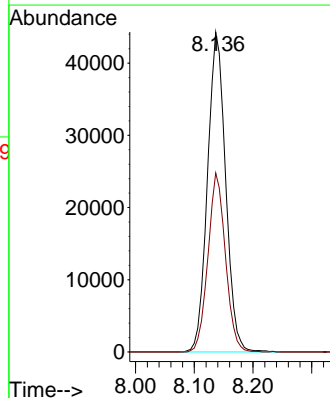
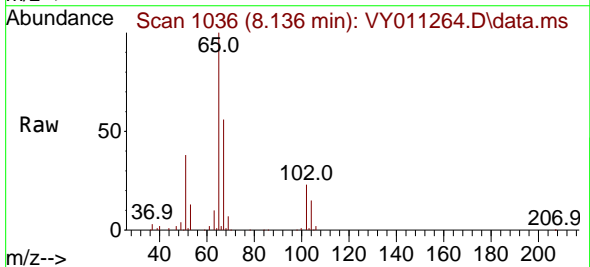
Instrument : MSVOA_Y
 ClientSampleId : S-2-103122

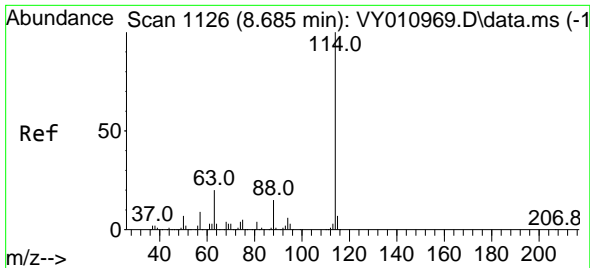
Tgt Ion: 43 Resp: 8360
 Ion Ratio Lower Upper
 43 100
 72 26.9 17.7 26.5#



#33
 1,2-Dichloroethane-d4
 Concen: 45.107 ug/l
 RT: 8.136 min Scan# 1036
 Delta R.T. 0.000 min
 Lab File: VY011264.D
 Acq: 02 Nov 2022 15:49

Tgt Ion: 65 Resp: 95026
 Ion Ratio Lower Upper
 65 100
 67 54.0 0.0 99.4

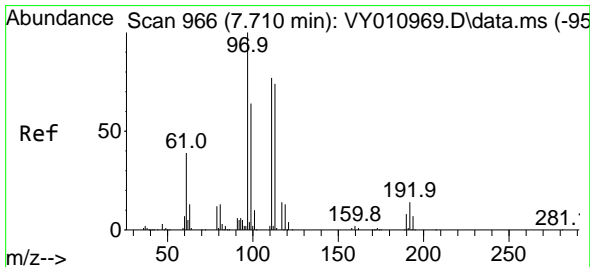
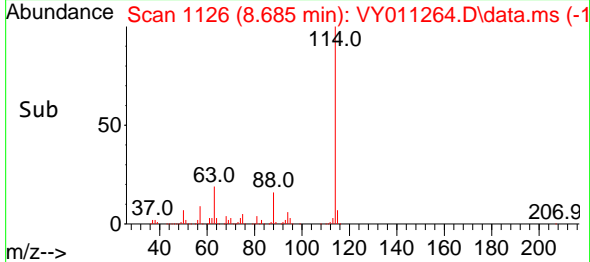
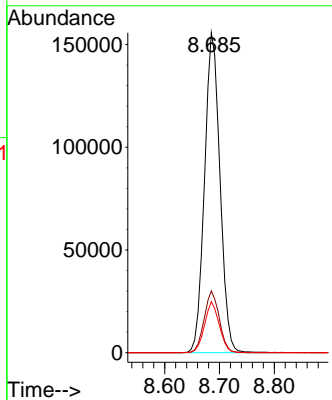
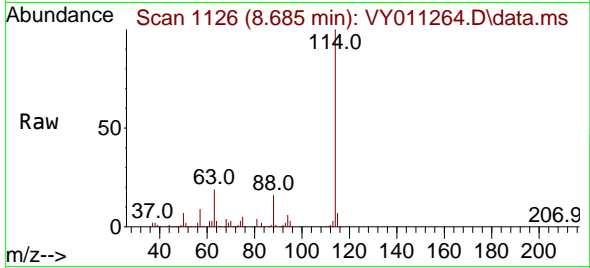




#34
 1,4-Difluorobenzene
 Concen: 50.000 ug/l
 RT: 8.685 min Scan# 1126
 Delta R.T. 0.000 min
 Lab File: VY011264.D
 Acq: 02 Nov 2022 15:49

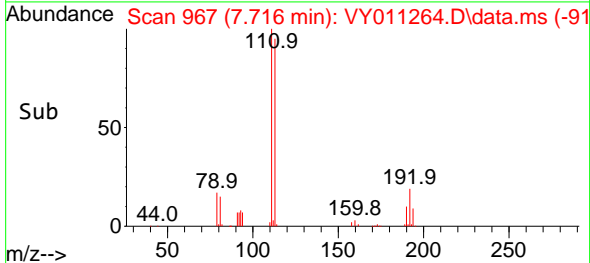
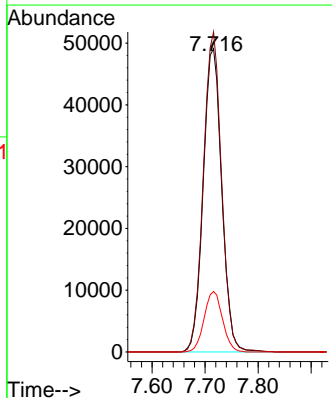
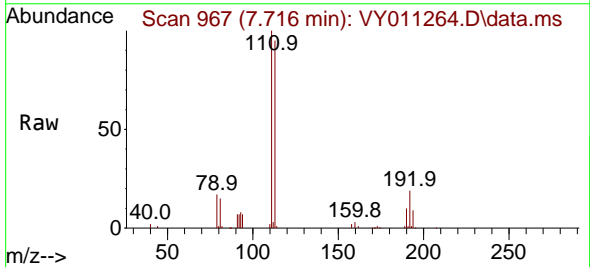
Instrument : MSVOA_Y
 ClientSampleId : S-2-103122

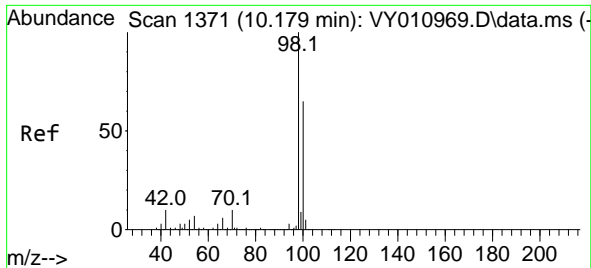
Tgt Ion	Resp	Lower	Upper
114	100		
63	19.3	0.0	43.2
88	16.0	0.0	31.8



#35
 Dibromofluoromethane
 Concen: 60.965 ug/l
 RT: 7.716 min Scan# 967
 Delta R.T. 0.006 min
 Lab File: VY011264.D
 Acq: 02 Nov 2022 15:49

Tgt Ion	Resp	Lower	Upper
113	100		
111	103.8	82.6	124.0
192	19.7	17.6	26.4

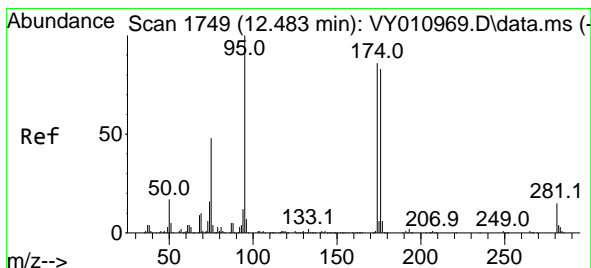
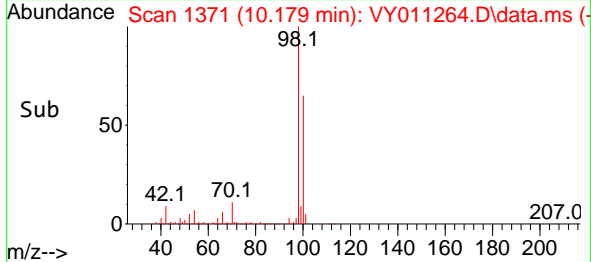
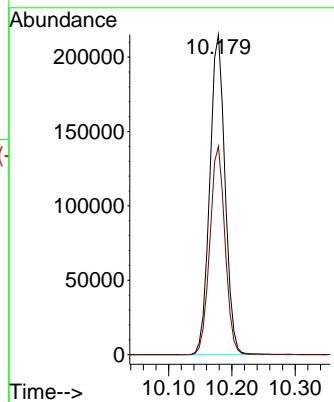
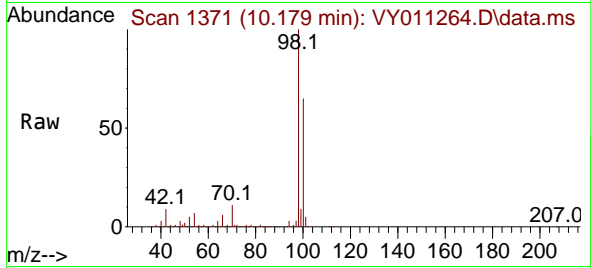




#50
 Toluene-d8
 Concen: 47.602 ug/l
 RT: 10.179 min Scan# 11
 Delta R.T. -0.000 min
 Lab File: VY011264.D
 Acq: 02 Nov 2022 15:49

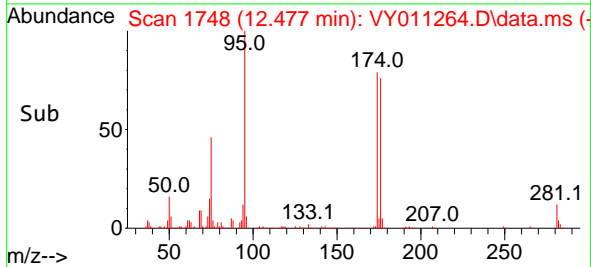
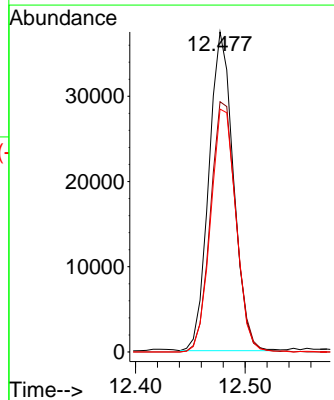
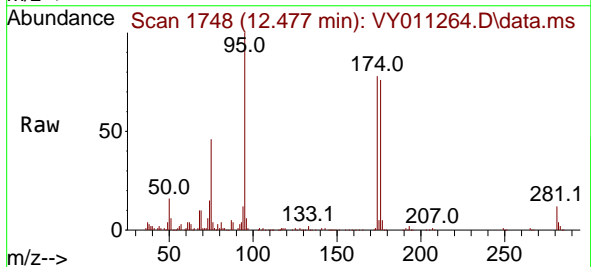
Instrument :
 MSVOA_Y
 ClientSampleId :
 S-2-103122

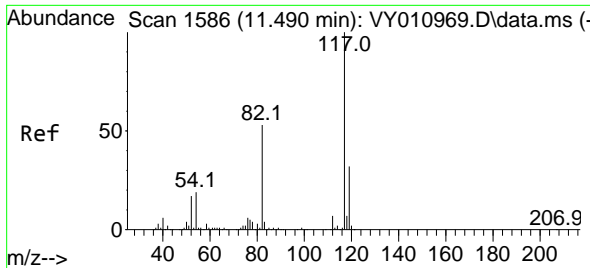
Tgt Ion: 98 Resp: 361155
 Ion Ratio Lower Upper
 98 100
 100 64.9 50.2 75.2



#62
 4-Bromofluorobenzene
 Concen: 22.147 ug/l
 RT: 12.477 min Scan# 1748
 Delta R.T. -0.006 min
 Lab File: VY011264.D
 Acq: 02 Nov 2022 15:49

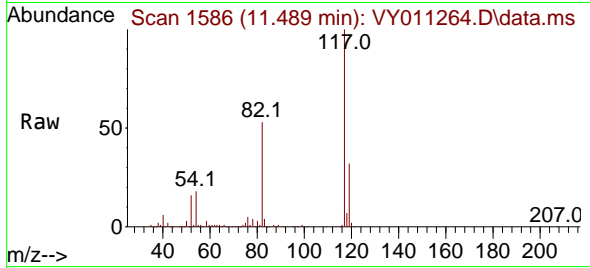
Tgt Ion: 95 Resp: 58332
 Ion Ratio Lower Upper
 95 100
 174 81.4 0.0 177.0
 176 78.7 0.0 175.8





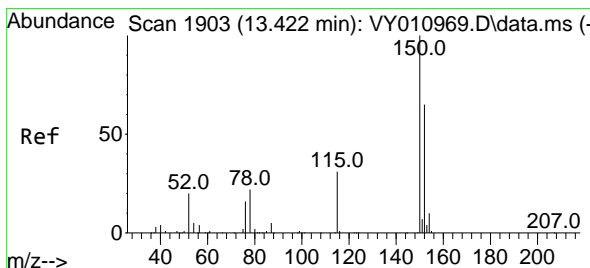
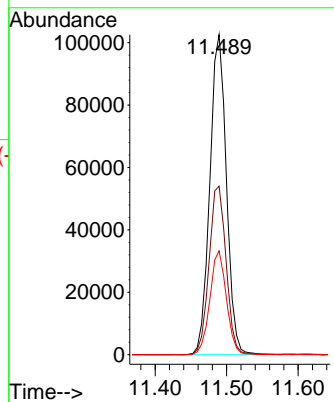
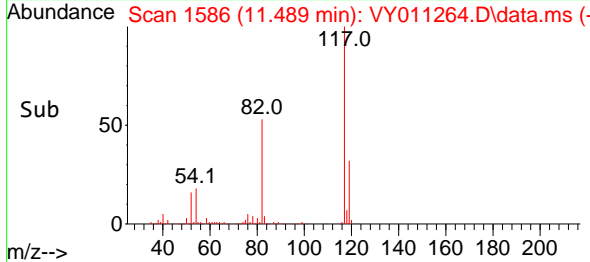
#63
 Chlorobenzene-d5
 Concen: 50.000 ug/l
 RT: 11.489 min Scan# 11
 Delta R.T. -0.001 min
 Lab File: VY011264.D
 Acq: 02 Nov 2022 15:49

Instrument : MSVOA_Y
 ClientSampleId : S-2-103122

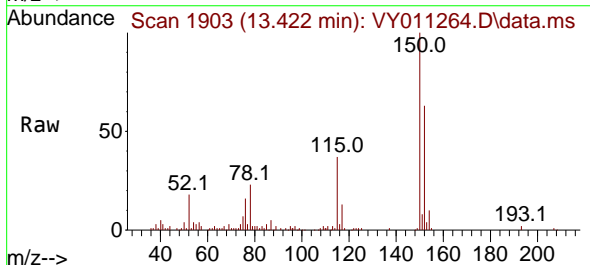


Tgt Ion:117 Resp: 165041

Ion	Ratio	Lower	Upper
117	100		
82	52.7	43.0	64.4
119	32.4	25.4	38.0



#72
 1,4-Dichlorobenzene-d4
 Concen: 50.000 ug/l
 RT: 13.422 min Scan# 1903
 Delta R.T. 0.000 min
 Lab File: VY011264.D
 Acq: 02 Nov 2022 15:49



Tgt Ion:152 Resp: 30167

Ion	Ratio	Lower	Upper
152	100		
115	58.1	28.2	84.7
150	154.7	0.0	347.6

