

Data Path : Z:\voasrv\HPCHEM1\MSVOA\_Y\Data\VY121125\  
 Data File : VY023950.D  
 Acq On : 11 Dec 2025 13:15  
 Operator : SY/MD  
 Sample : Q3809-12RE  
 Misc : 2.50g/5.0mL/MSVOA\_Y/SOIL  
 ALS Vial : 2 Sample Multiplier: 1

Instrument :  
 MSVOA\_Y  
 ClientSampleId :  
 SW-9

Quant Time: Dec 12 03:22:33 2025  
 Quant Method : Z:\voasrv\HPCHEM1\MSVOA\_Y\methods\82Y121025S.M  
 Quant Title : SW846 8260  
 QLast Update : Thu Dec 11 03:57:51 2025  
 Response via : Initial Calibration

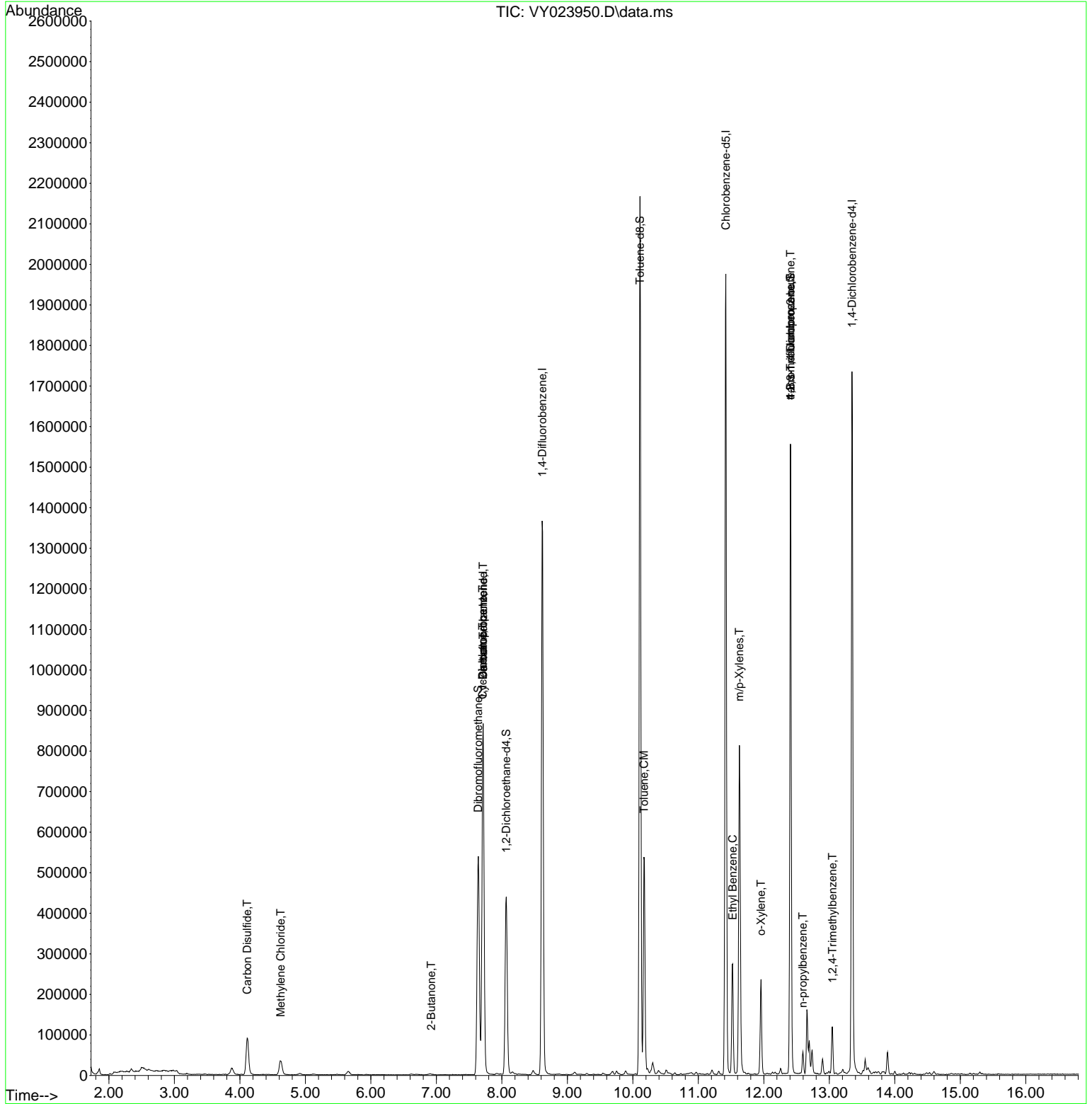
Compound	R.T.	QIon	Response	Conc	Units	Dev(Min)
-----						
Internal Standards						
1) Pentafluorobenzene	7.713	168	707180	50.000	ug/l	0.00
34) 1,4-Difluorobenzene	8.616	114	1222963	50.000	ug/l	0.00
63) Chlorobenzene-d5	11.420	117	1086423	50.000	ug/l	0.00
72) 1,4-Dichlorobenzene-d4	13.346	152	458594	50.000	ug/l	0.00
System Monitoring Compounds						
33) 1,2-Dichloroethane-d4	8.067	65	355407	56.842	ug/l	0.00
Spiked Amount	50.000	Range	50 - 163	Recovery	=	113.680%
35) Dibromofluoromethane	7.640	113	389614	48.736	ug/l	0.00
Spiked Amount	50.000	Range	54 - 147	Recovery	=	97.480%
50) Toluene-d8	10.109	98	1403021	47.138	ug/l	0.00
Spiked Amount	50.000	Range	58 - 134	Recovery	=	94.280%
62) 4-Bromofluorobenzene	12.408	95	445606	44.830	ug/l	0.00
Spiked Amount	50.000	Range	30 - 143	Recovery	=	89.660%
Target Compounds						
					Qvalue	
10) Methyl Iodide	4.013	142	635	Below Cal	#	41
16) Acetone	3.885	43	27334	Below Cal		95
17) Carbon Disulfide	4.110	76	190065	11.152	ug/l	98
20) Methylene Chloride	4.622	84	26983	3.668	ug/l	95
25) 2-Butanone	6.921	43	2408	1.246	ug/l	# 69
31) Cyclohexane	7.707	56	13361	1.246	ug/l	# 2
36) 1,1-Dichloropropene	7.707	75	47675	4.380	ug/l	# 40
38) Carbon Tetrachloride	7.713	117	64904	4.920	ug/l	# 15
52) Toluene	10.170	92	229429	10.461	ug/l	98
67) Ethyl Benzene	11.524	91	189423	4.491	ug/l	100
68) m/p-Xylenes	11.627	106	255895	15.283	ug/l	99
69) o-Xylene	11.956	106	62335	3.980	ug/l	95
76) 1,2,3-Trichloropropane	12.408	75	218864	56.420	ug/l	# 100
78) n-propylbenzene	12.597	91	39072	1.002	ug/l	98
81) trans-1,4-Dichloro-2-b...	12.408	75	218864	128.424	ug/l	# 12
84) 1,2,4-Trimethylbenzene	13.048	105	65892	2.488	ug/l	99

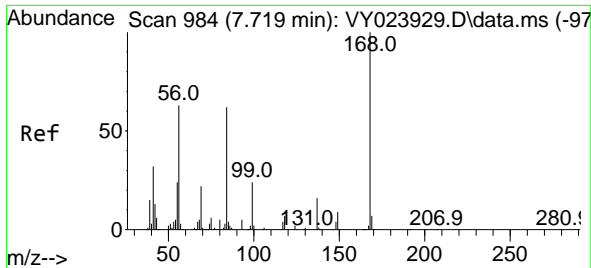
(#) = qualifier out of range (m) = manual integration (+) = signals summed

Data Path : Z:\voasrv\HPCHEM1\MSVOA\_Y\Data\VY121125\  
 Data File : VY023950.D  
 Acq On : 11 Dec 2025 13:15  
 Operator : SY/MD  
 Sample : Q3809-12RE  
 Misc : 2.50g/5.0mL/MSVOA\_Y/SOIL  
 ALS Vial : 2 Sample Multiplier: 1

Instrument :  
 MSVOA\_Y  
 ClientSampleId :  
 SW-9

Quant Time: Dec 12 03:22:33 2025  
 Quant Method : Z:\voasrv\HPCHEM1\MSVOA\_Y\methods\82Y121025S.M  
 Quant Title : SW846 8260  
 QLast Update : Thu Dec 11 03:57:51 2025  
 Response via : Initial Calibration

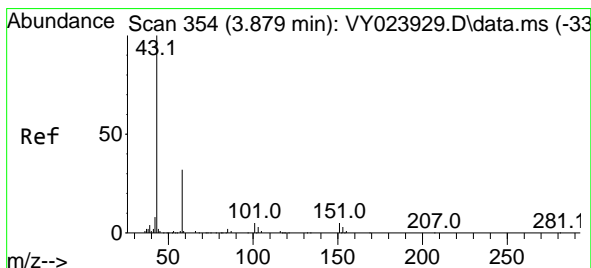
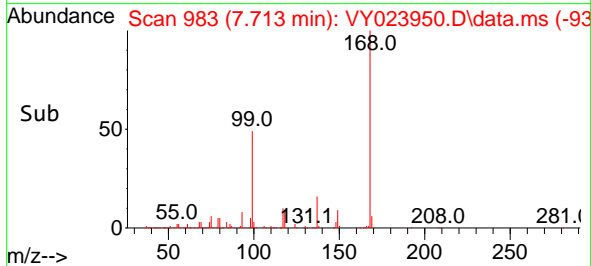
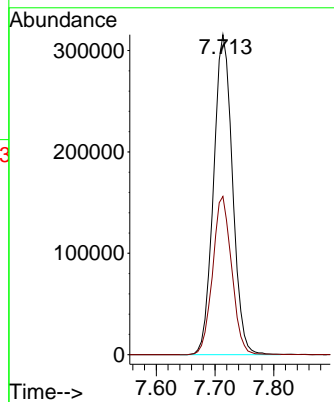
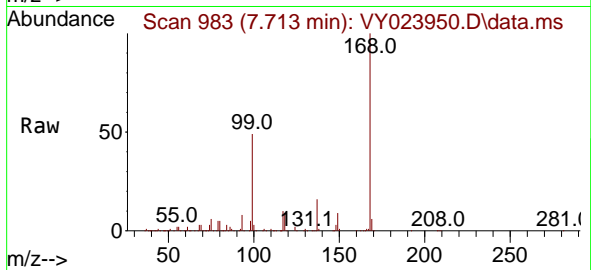




#1  
 Pentafluorobenzene  
 Concen: 50.000 ug/l  
 RT: 7.713 min Scan# 91  
 Delta R.T. -0.006 min  
 Lab File: VY023950.D  
 Acq: 11 Dec 2025 13:15

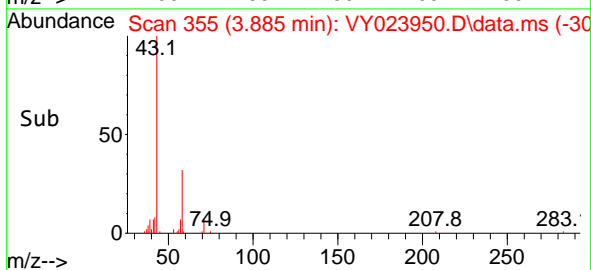
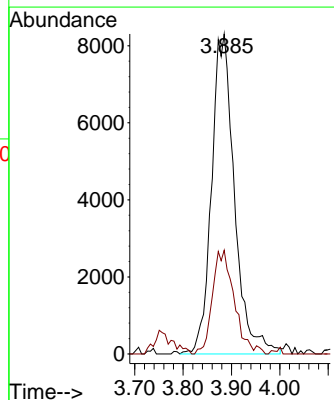
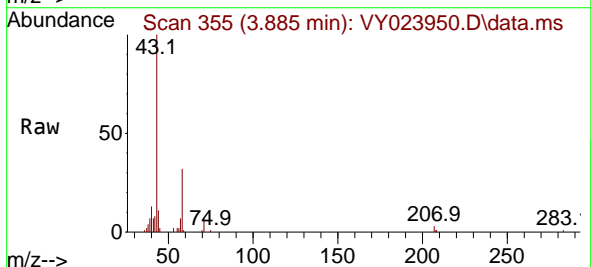
Instrument : MSVOA\_Y  
 ClientSampleId : SW-9

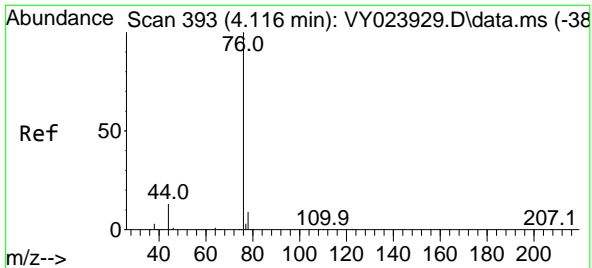
Tgt Ion:168 Resp: 707180  
 Ion Ratio Lower Upper  
 168 100  
 99 49.5 38.9 58.3



#16  
 Acetone  
 Concen: Below Cal  
 RT: 3.885 min Scan# 355  
 Delta R.T. 0.006 min  
 Lab File: VY023950.D  
 Acq: 11 Dec 2025 13:15

Tgt Ion: 43 Resp: 27334  
 Ion Ratio Lower Upper  
 43 100  
 58 30.3 26.4 39.6

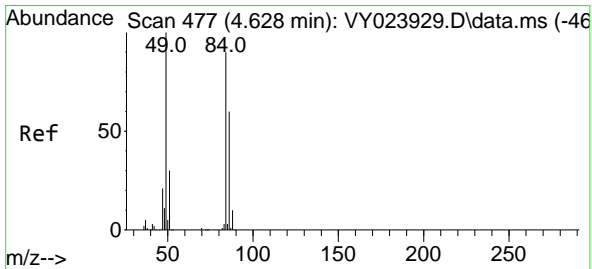
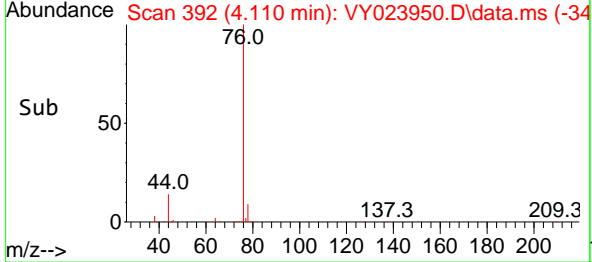
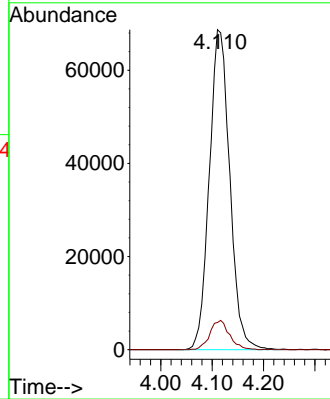
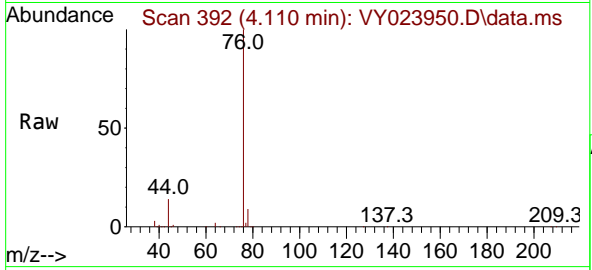




#17  
 Carbon Disulfide  
 Concen: 11.152 ug/l  
 RT: 4.110 min Scan# 391  
 Delta R.T. -0.006 min  
 Lab File: VY023950.D  
 Acq: 11 Dec 2025 13:15

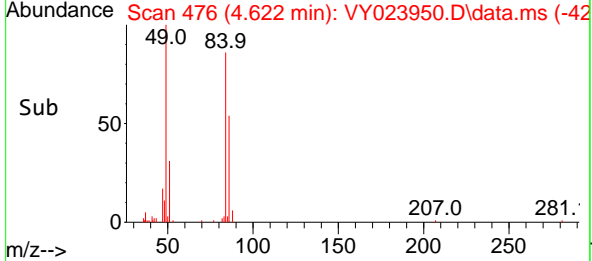
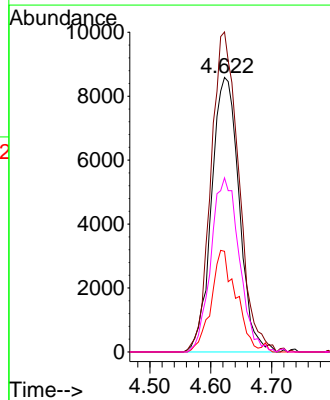
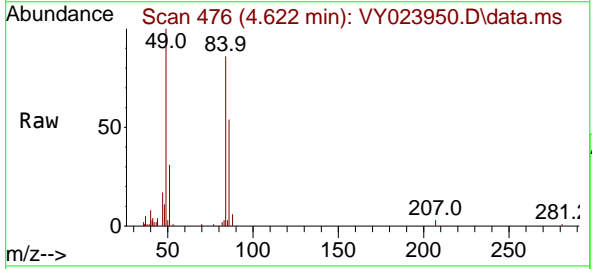
Instrument : MSVOA\_Y  
 ClientSampleId : SW-9

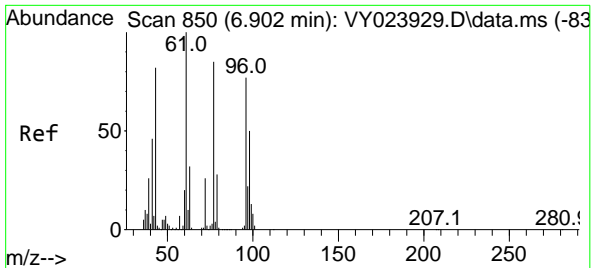
Tgt Ion: 76 Resp: 190065  
 Ion Ratio Lower Upper  
 76 100  
 78 8.5 7.4 11.2



#20  
 Methylene Chloride  
 Concen: 3.668 ug/l  
 RT: 4.622 min Scan# 476  
 Delta R.T. -0.006 min  
 Lab File: VY023950.D  
 Acq: 11 Dec 2025 13:15

Tgt Ion: 84 Resp: 26983  
 Ion Ratio Lower Upper  
 84 100  
 49 116.6 89.1 133.7  
 51 36.7 26.6 39.8  
 86 63.4 53.4 80.0

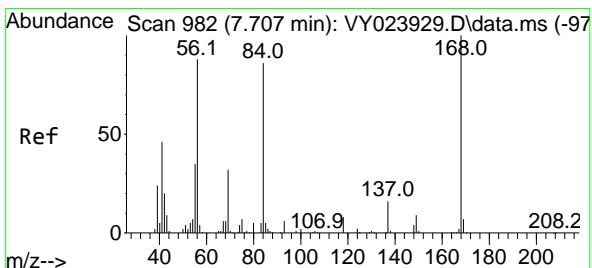
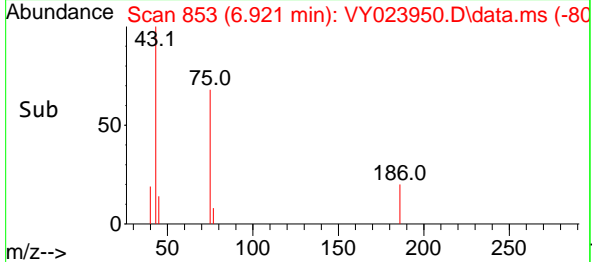
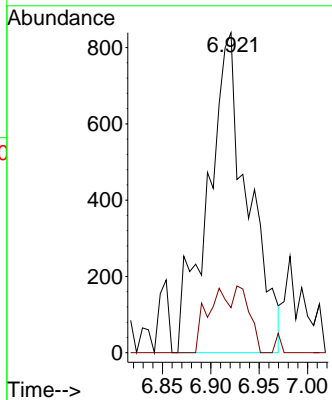
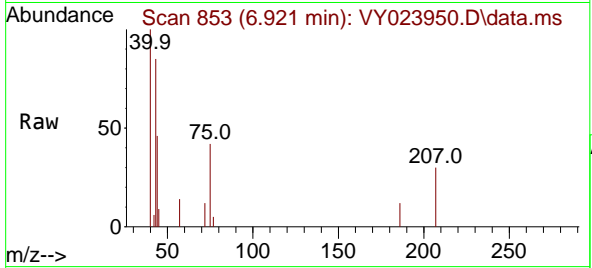




#25  
 2-Butanone  
 Concen: 1.246 ug/l  
 RT: 6.921 min Scan# 853  
 Delta R.T. 0.018 min  
 Lab File: VY023950.D  
 Acq: 11 Dec 2025 13:15

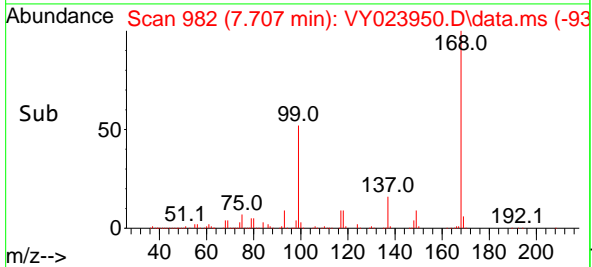
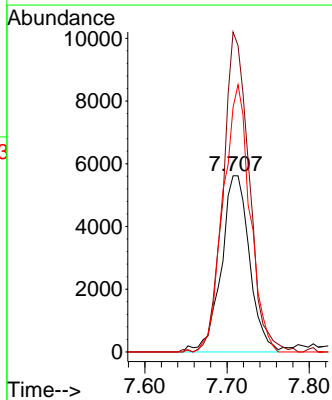
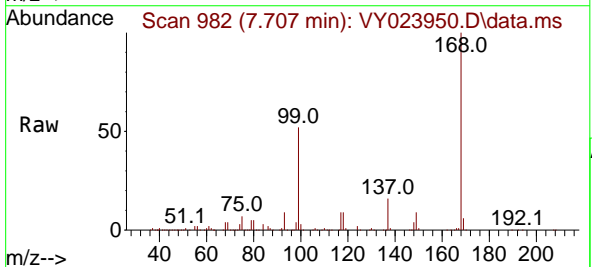
Instrument : MSVOA\_Y  
 ClientSampleId : SW-9

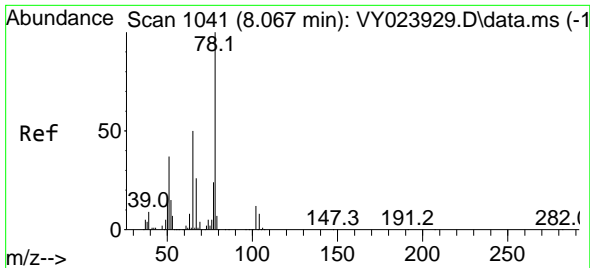
Tgt Ion: 43 Resp: 2408  
 Ion Ratio Lower Upper  
 43 100  
 72 14.1 25.0 37.6#



#31  
 Cyclohexane  
 Concen: 1.246 ug/l  
 RT: 7.707 min Scan# 982  
 Delta R.T. 0.000 min  
 Lab File: VY023950.D  
 Acq: 11 Dec 2025 13:15

Tgt Ion: 56 Resp: 13361  
 Ion Ratio Lower Upper  
 56 100  
 69 181.7 29.1 43.7#  
 84 138.9 77.8 116.8#

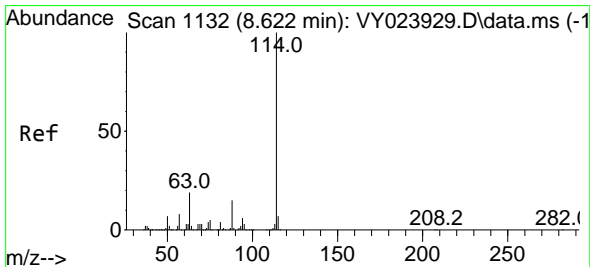
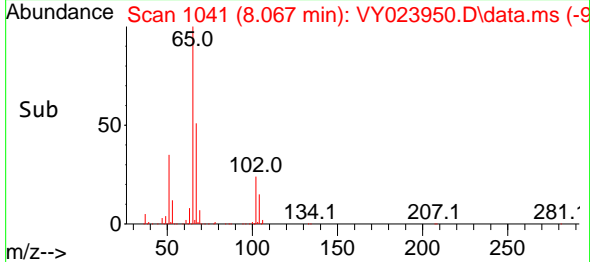
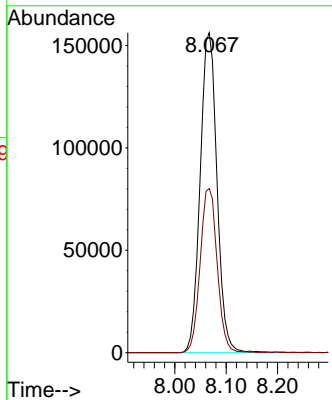
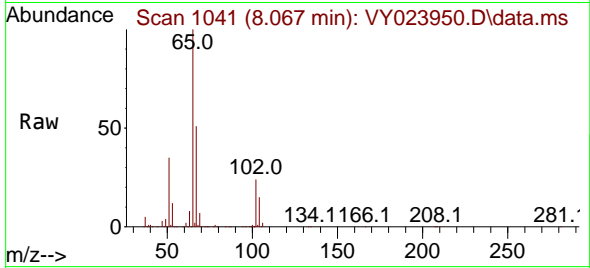




#33  
 1,2-Dichloroethane-d4  
 Concen: 56.842 ug/l  
 RT: 8.067 min Scan# 1041  
 Delta R.T. 0.000 min  
 Lab File: VY023950.D  
 Acq: 11 Dec 2025 13:15

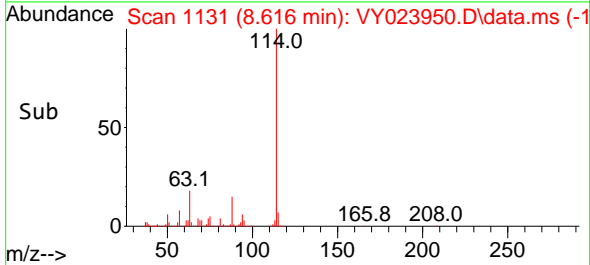
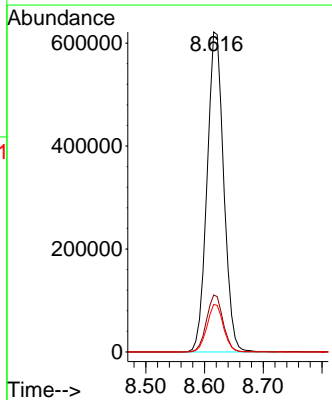
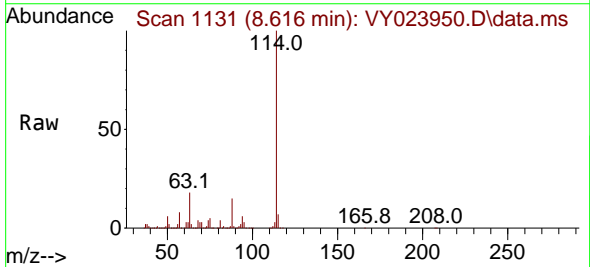
Instrument : MSVOA\_Y  
 ClientSampleId : SW-9

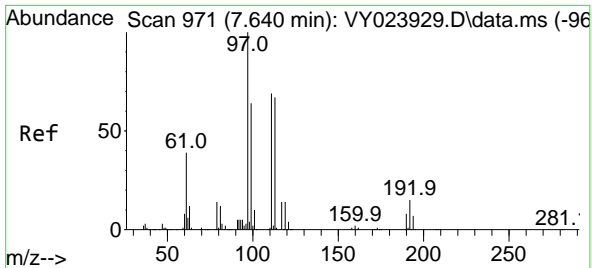
Tgt Ion: 65 Resp: 355407  
 Ion Ratio Lower Upper  
 65 100  
 67 51.9 0.0 106.2



#34  
 1,4-Difluorobenzene  
 Concen: 50.000 ug/l  
 RT: 8.616 min Scan# 1131  
 Delta R.T. -0.006 min  
 Lab File: VY023950.D  
 Acq: 11 Dec 2025 13:15

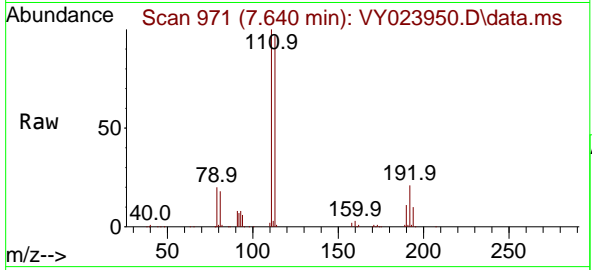
Tgt Ion:114 Resp: 1222963  
 Ion Ratio Lower Upper  
 114 100  
 63 17.8 0.0 37.2  
 88 14.8 0.0 29.4





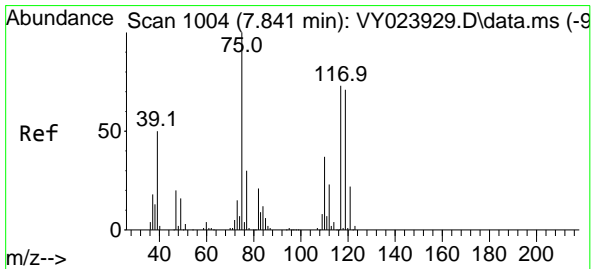
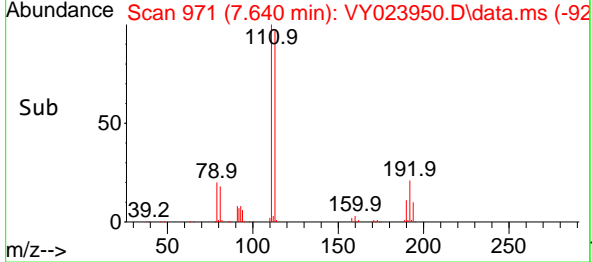
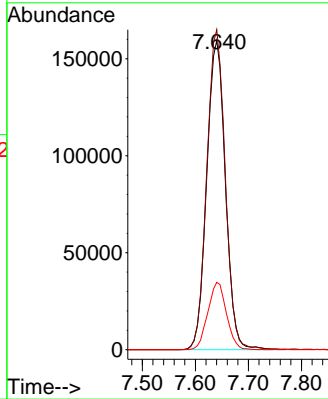
#35  
 Dibromofluoromethane  
 Concen: 48.736 ug/l  
 RT: 7.640 min Scan# 91  
 Delta R.T. 0.000 min  
 Lab File: VY023950.D  
 Acq: 11 Dec 2025 13:15

Instrument : MSVOA\_Y  
 ClientSampleId : SW-9



Tgt Ion:113 Resp: 389614

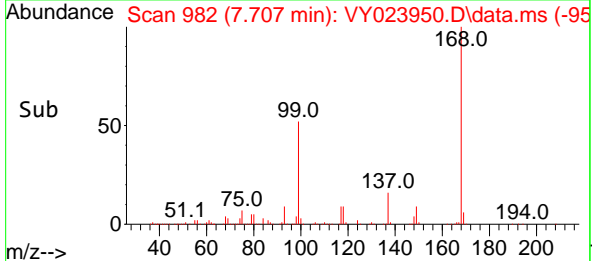
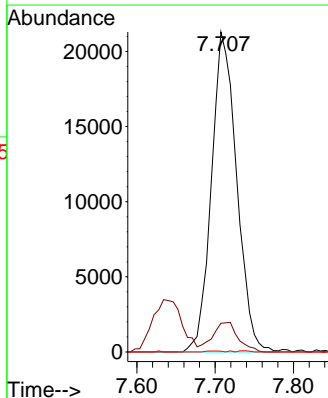
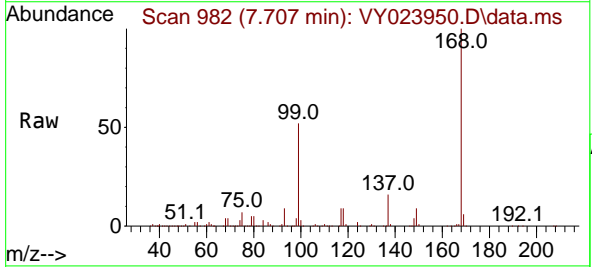
Ion	Ratio	Lower	Upper
113	100		
111	102.8	82.4	123.6
192	21.7	17.9	26.9

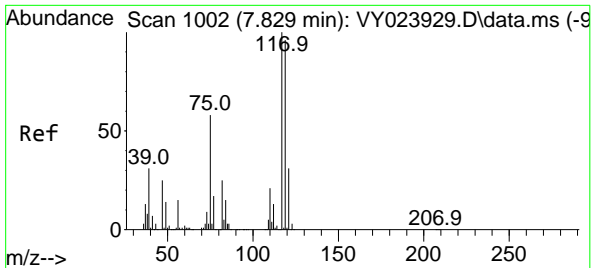


#36  
 1,1-Dichloropropene  
 Concen: 4.380 ug/l  
 RT: 7.707 min Scan# 982  
 Delta R.T. -0.134 min  
 Lab File: VY023950.D  
 Acq: 11 Dec 2025 13:15

Tgt Ion: 75 Resp: 47675

Ion	Ratio	Lower	Upper
75	100		
110	0.0	19.2	57.6#
77	0.2	24.4	36.6#

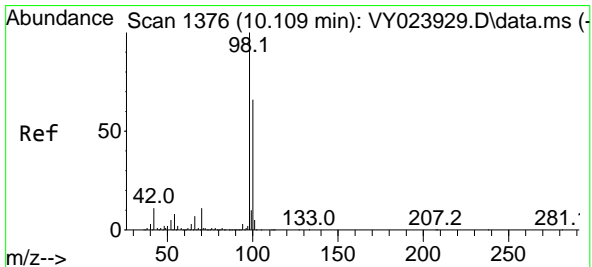
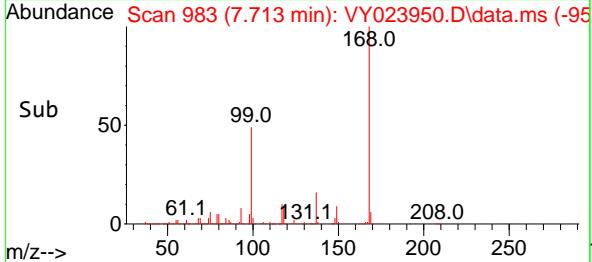
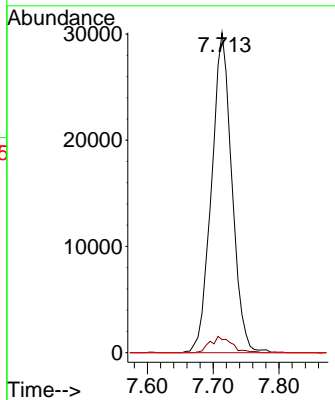
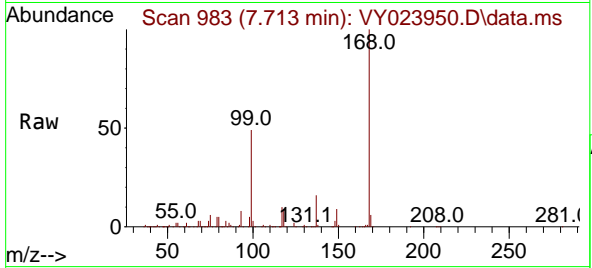




#38  
 Carbon Tetrachloride  
 Concen: 4.920 ug/l  
 RT: 7.713 min Scan# 91  
 Delta R.T. -0.116 min  
 Lab File: VY023950.D  
 Acq: 11 Dec 2025 13:15

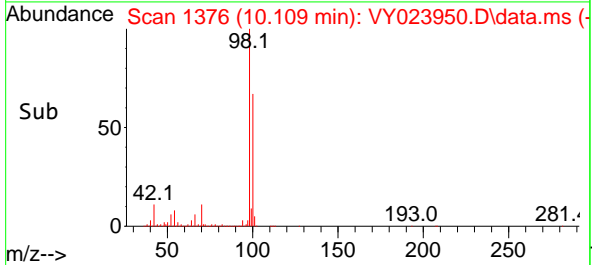
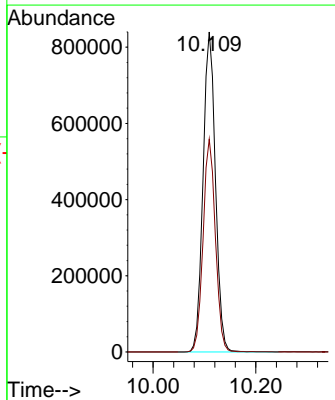
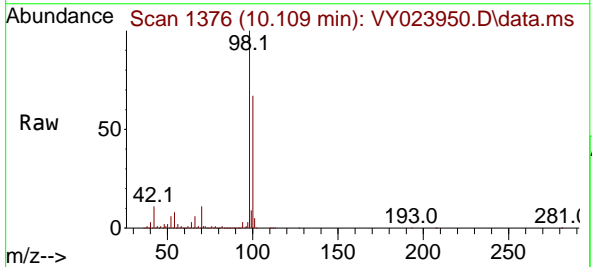
Instrument : MSVOA\_Y  
 ClientSampleId : SW-9

Tgt Ion	Resp	Lower	Upper
117	64904		
117	100		
119	4.1	76.6	114.8#
121	0.0	24.8	37.2#

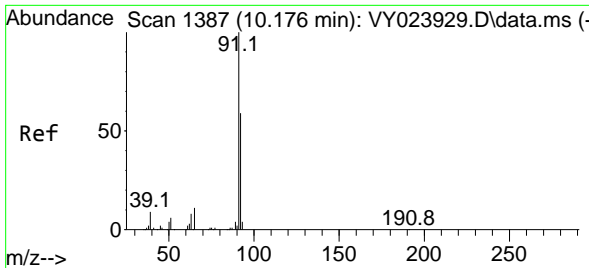


#50  
 Toluene-d8  
 Concen: 47.138 ug/l  
 RT: 10.109 min Scan# 1376  
 Delta R.T. 0.000 min  
 Lab File: VY023950.D  
 Acq: 11 Dec 2025 13:15

Tgt Ion	Resp	Lower	Upper
98	1403021		
98	100		
100	65.9	52.8	79.2



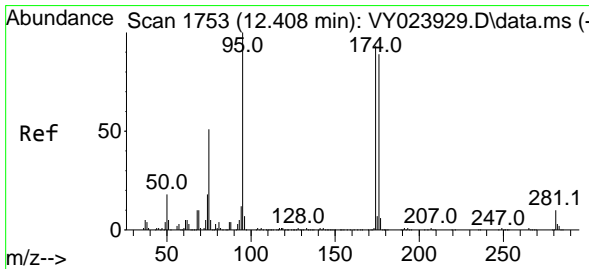
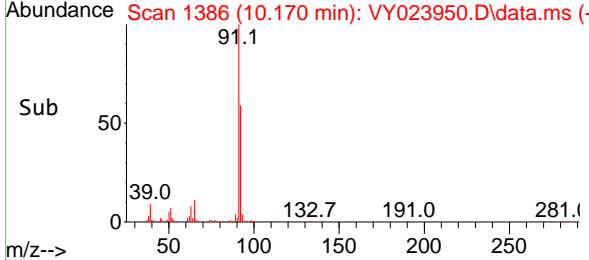
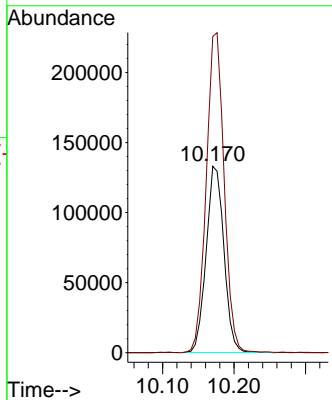
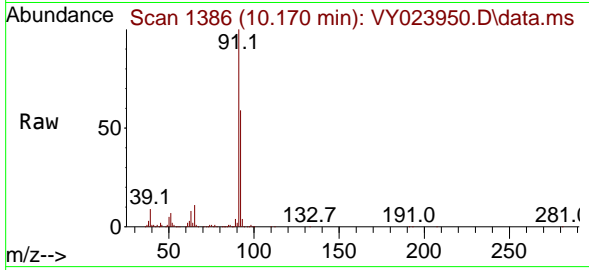




#52  
 Toluene  
 Concen: 10.461 ug/l  
 RT: 10.170 min Scan# 11  
 Delta R.T. -0.006 min  
 Lab File: VY023950.D  
 Acq: 11 Dec 2025 13:15

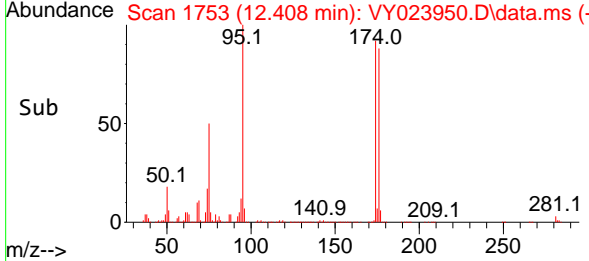
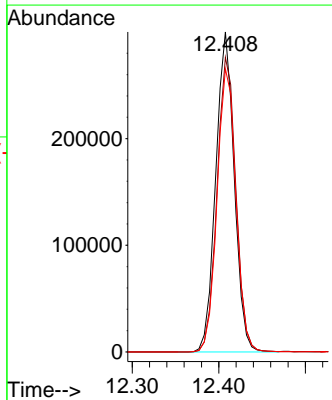
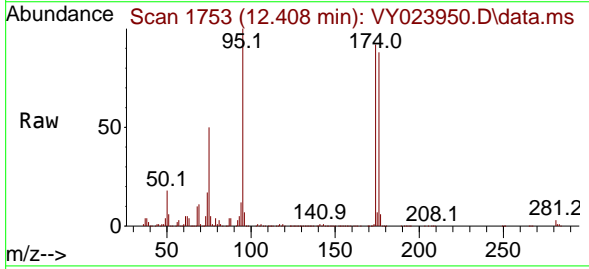
Instrument : MSVOA\_Y  
 ClientSampleId : SW-9

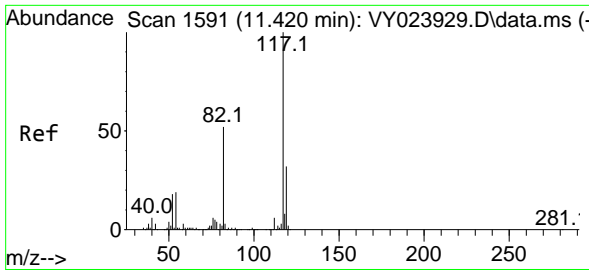
Tgt Ion: 92 Resp: 229429  
 Ion Ratio Lower Upper  
 92 100  
 91 172.8 135.8 203.6



#62  
 4-Bromofluorobenzene  
 Concen: 44.830 ug/l  
 RT: 12.408 min Scan# 1753  
 Delta R.T. 0.000 min  
 Lab File: VY023950.D  
 Acq: 11 Dec 2025 13:15

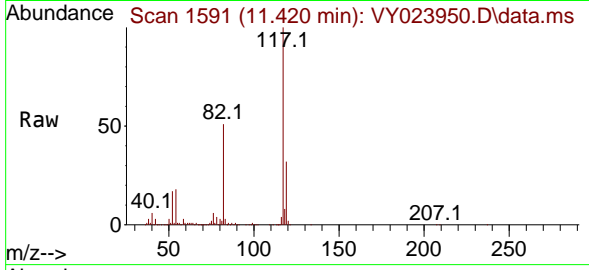
Tgt Ion: 95 Resp: 445606  
 Ion Ratio Lower Upper  
 95 100  
 174 94.1 0.0 187.4  
 176 90.3 0.0 179.6



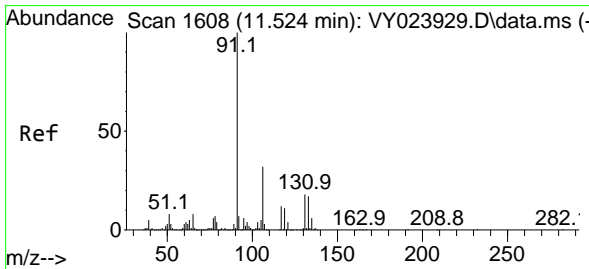
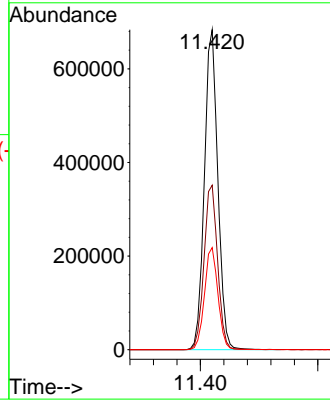
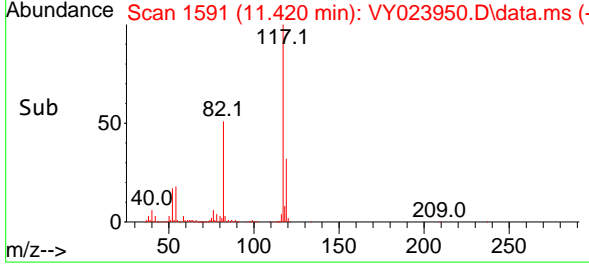


#63  
 Chlorobenzene-d5  
 Concen: 50.000 ug/l  
 RT: 11.420 min Scan# 1591  
 Delta R.T. 0.000 min  
 Lab File: VY023950.D  
 Acq: 11 Dec 2025 13:15

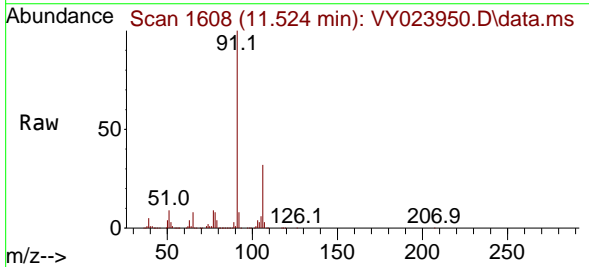
Instrument : MSVOA\_Y  
 ClientSampleId : SW-9



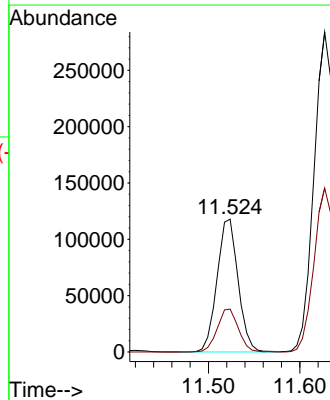
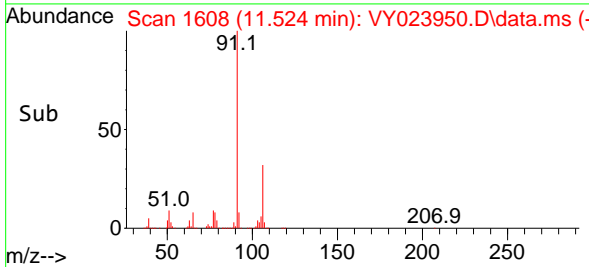
Tgt Ion:117 Resp: 1086423  
 Ion Ratio Lower Upper  
 117 100  
 82 51.4 41.4 62.2  
 119 31.9 25.5 38.3

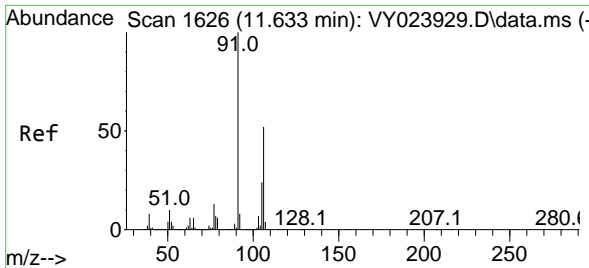


#67  
 Ethyl Benzene  
 Concen: 4.491 ug/l  
 RT: 11.524 min Scan# 1608  
 Delta R.T. 0.000 min  
 Lab File: VY023950.D  
 Acq: 11 Dec 2025 13:15



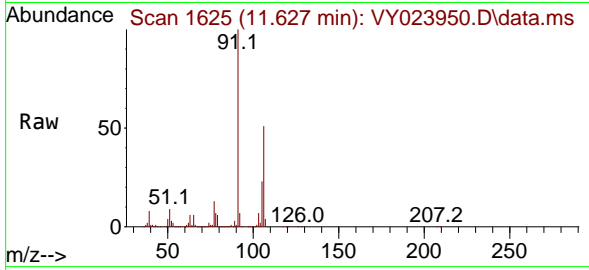
Tgt Ion: 91 Resp: 189423  
 Ion Ratio Lower Upper  
 91 100  
 106 32.3 25.8 38.8



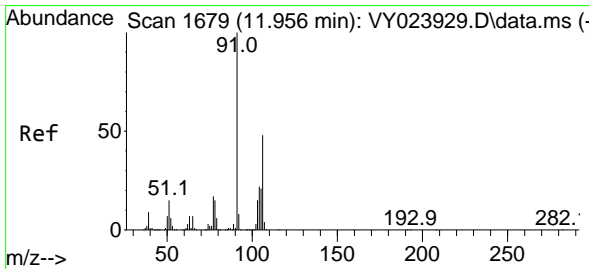
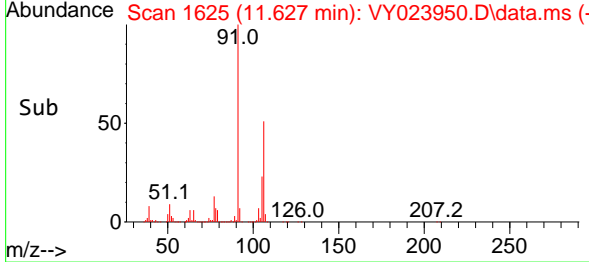
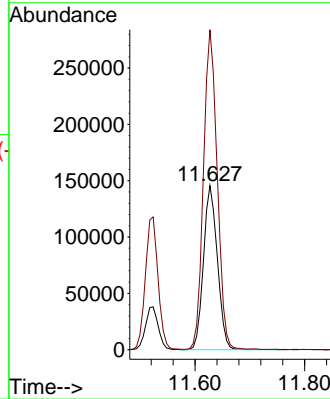


#68  
 m/p-Xylenes  
 Concen: 15.283 ug/l  
 RT: 11.627 min Scan# 1625  
 Delta R.T. -0.006 min  
 Lab File: VY023950.D  
 Acq: 11 Dec 2025 13:15

Instrument : MSVOA\_Y  
 ClientSampleId : SW-9

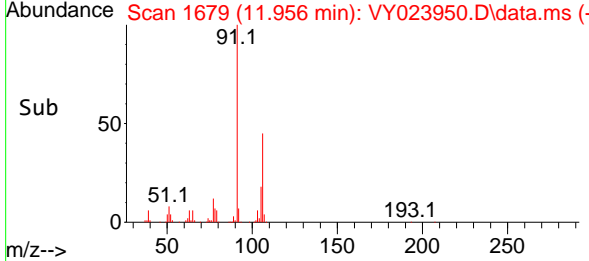
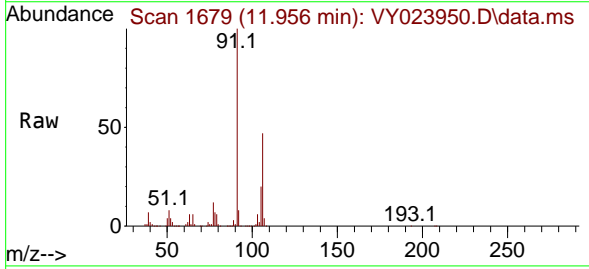
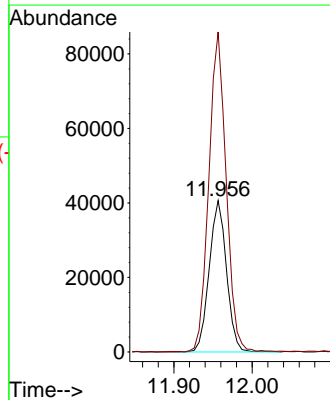


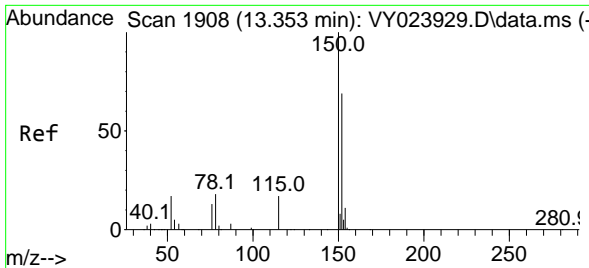
Tgt Ion:106 Resp: 255895  
 Ion Ratio Lower Upper  
 106 100  
 91 192.3 155.0 232.6



#69  
 o-Xylene  
 Concen: 3.980 ug/l  
 RT: 11.956 min Scan# 1679  
 Delta R.T. 0.000 min  
 Lab File: VY023950.D  
 Acq: 11 Dec 2025 13:15

Tgt Ion:106 Resp: 62335  
 Ion Ratio Lower Upper  
 106 100  
 91 211.9 102.1 306.1



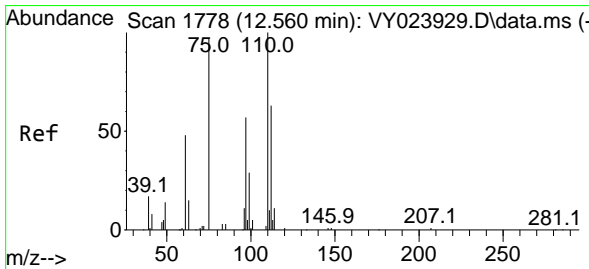
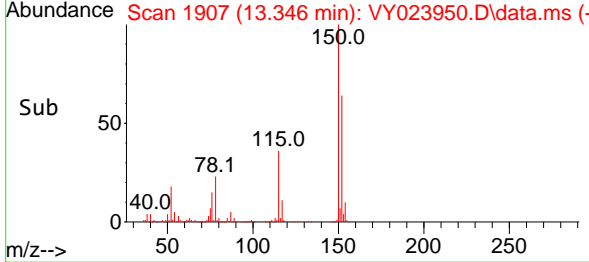
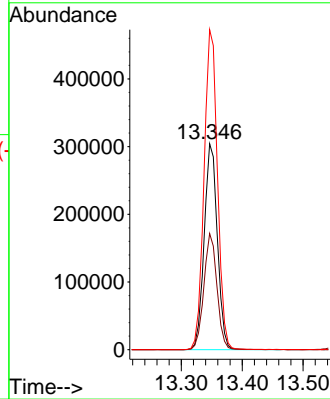
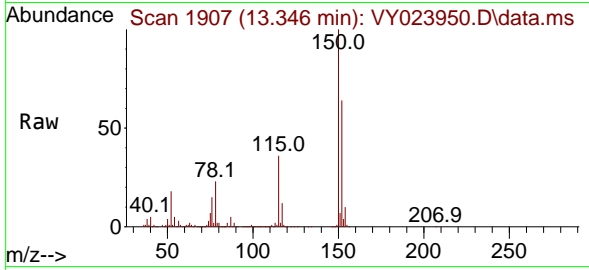


#72  
 1,4-Dichlorobenzene-d4  
 Concen: 50.000 ug/l  
 RT: 13.346 min Scan# 1907  
 Delta R.T. -0.006 min  
 Lab File: VY023950.D  
 Acq: 11 Dec 2025 13:15

Instrument : MSVOA\_Y  
 ClientSampleId : SW-9

Tgt Ion:152 Resp: 458594

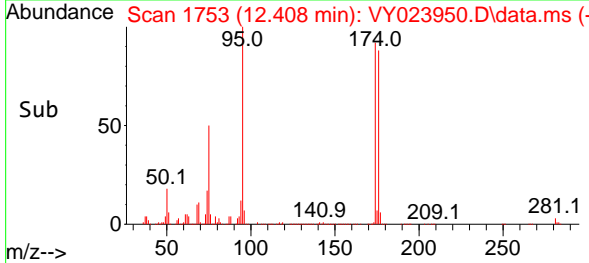
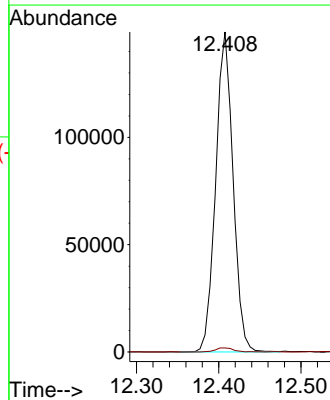
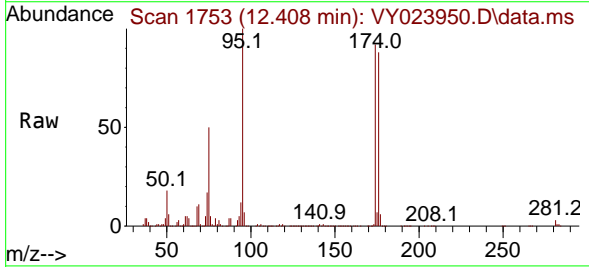
Ion	Ratio	Lower	Upper
152	100		
115	55.9	27.3	81.9
150	157.8	0.0	347.6

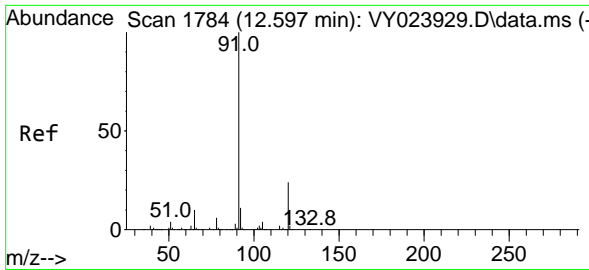


#76  
 1,2,3-Trichloropropane  
 Concen: 56.420 ug/l  
 RT: 12.408 min Scan# 1753  
 Delta R.T. -0.152 min  
 Lab File: VY023950.D  
 Acq: 11 Dec 2025 13:15

Tgt Ion: 75 Resp: 218864

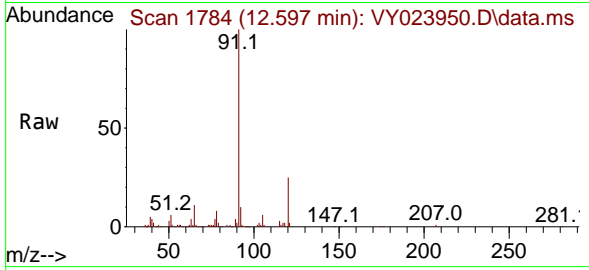
Ion	Ratio	Lower	Upper
75	100		
77	1.4	0.0	0.0#



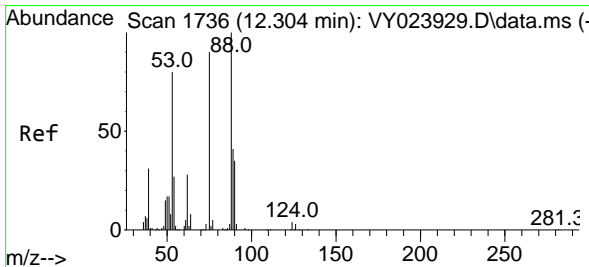
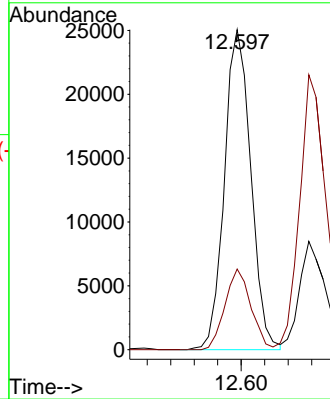
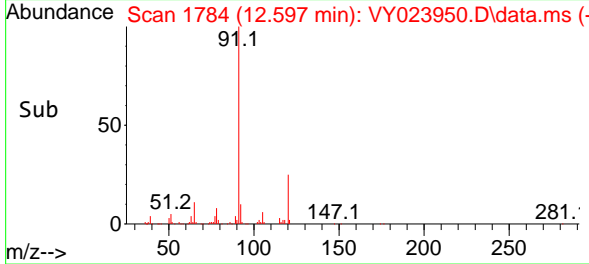


#78  
 n-propylbenzene  
 Concen: 1.002 ug/l  
 RT: 12.597 min Scan# 11  
 Delta R.T. 0.000 min  
 Lab File: VY023950.D  
 Acq: 11 Dec 2025 13:15

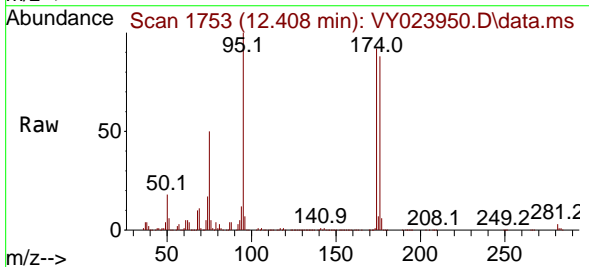
Instrument : MSVOA\_Y  
 ClientSampleId : SW-9



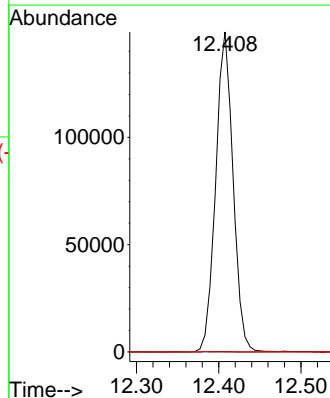
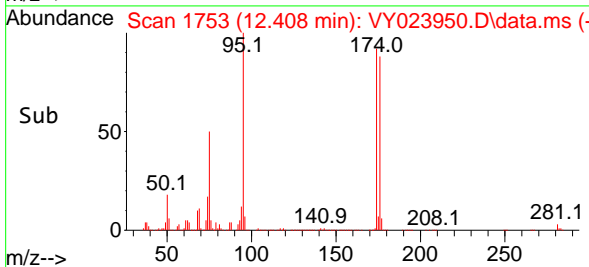
Tgt Ion: 91 Resp: 39072  
 Ion Ratio Lower Upper  
 91 100  
 120 24.8 12.0 36.0

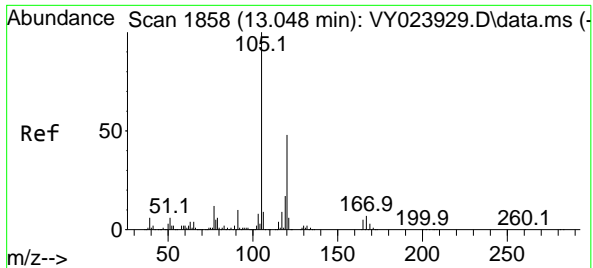


#81  
 trans-1,4-Dichloro-2-butene  
 Concen: 128.424 ug/l  
 RT: 12.408 min Scan# 1753  
 Delta R.T. 0.104 min  
 Lab File: VY023950.D  
 Acq: 11 Dec 2025 13:15



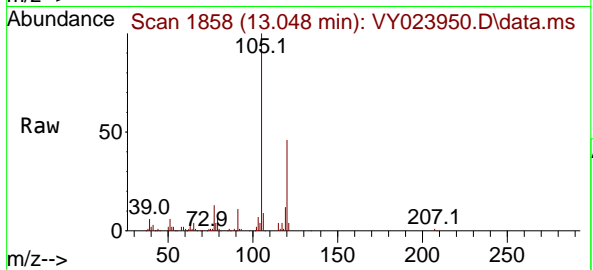
Tgt Ion: 75 Resp: 218864  
 Ion Ratio Lower Upper  
 75 100  
 53 0.2 73.4 110.0#  
 89 0.0 38.9 58.3#





#84  
 1,2,4-Trimethylbenzene  
 Concen: 2.488 ug/l  
 RT: 13.048 min Scan# 11  
 Delta R.T. 0.000 min  
 Lab File: VY023950.D  
 Acq: 11 Dec 2025 13:15

Instrument :  
 MSVOA\_Y  
 ClientSampleId :  
 SW-9



Tgt Ion:105 Resp: 65892  
 Ion Ratio Lower Upper  
 105 100  
 120 47.5 23.4 70.3

