

Data Path : Z:\voasrv\HPCHEM1\MSVOA\_Y\Data\VY121125\  
 Data File : VY023956.D  
 Acq On : 11 Dec 2025 15:41  
 Operator : SY/MD  
 Sample : Q3809-09RE  
 Misc : 2.26g/5.0mL/MSVOA\_Y/SOIL  
 ALS Vial : 2 Sample Multiplier: 1

Instrument :  
 MSVOA\_Y  
 ClientSampleId :  
 SW-6

Quant Time: Dec 12 03:25:08 2025  
 Quant Method : Z:\voasrv\HPCHEM1\MSVOA\_Y\methods\82Y121025S.M  
 Quant Title : SW846 8260  
 QLast Update : Thu Dec 11 03:57:51 2025  
 Response via : Initial Calibration

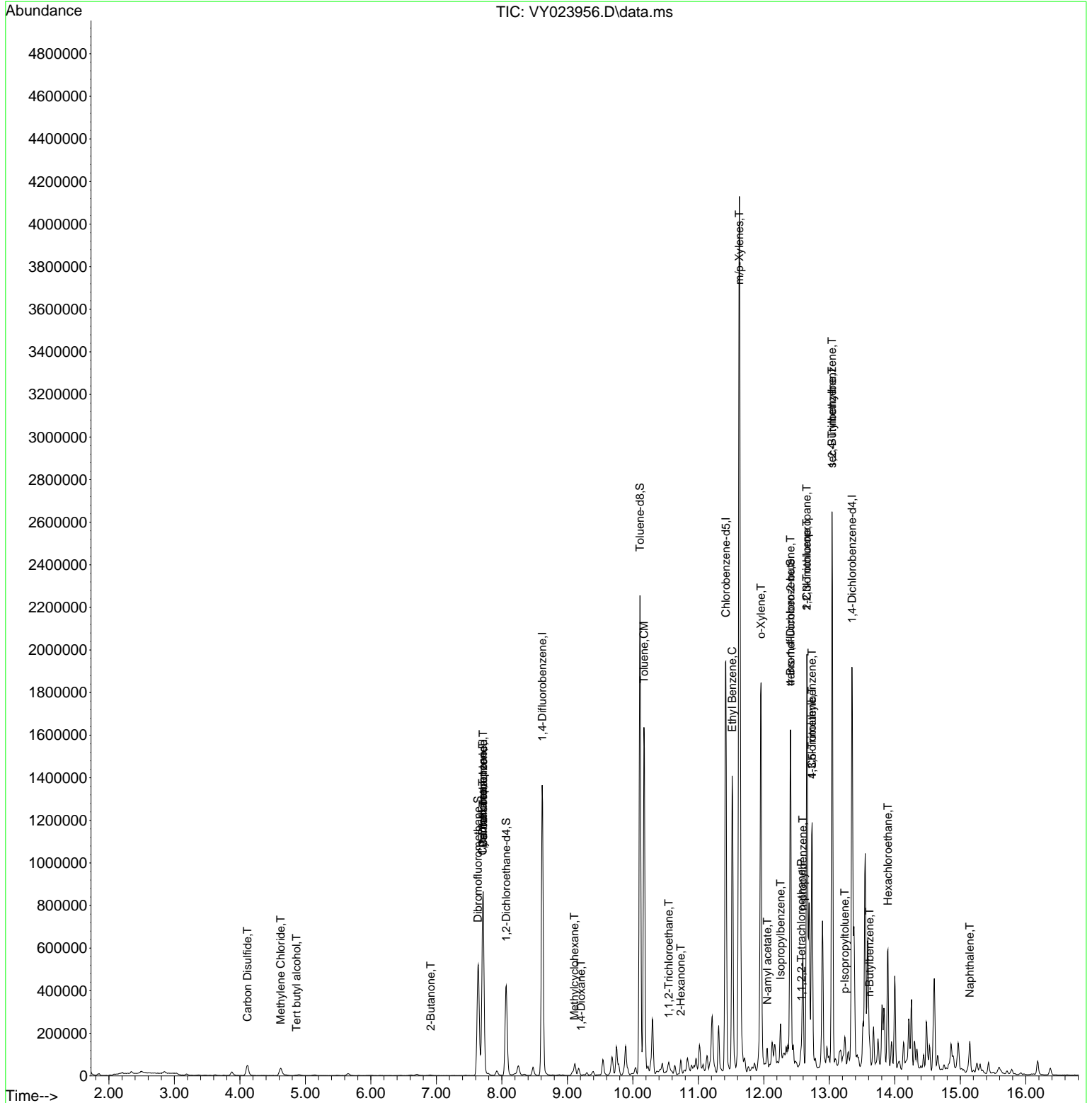
Compound	R.T.	QIon	Response	Conc	Units	Dev(Min)
-----						
Internal Standards						
1) Pentafluorobenzene	7.713	168	707218	50.000	ug/l	0.00
34) 1,4-Difluorobenzene	8.616	114	1215755	50.000	ug/l	0.00
63) Chlorobenzene-d5	11.420	117	1087731	50.000	ug/l	0.00
72) 1,4-Dichlorobenzene-d4	13.346	152	481018	50.000	ug/l	0.00
System Monitoring Compounds						
33) 1,2-Dichloroethane-d4	8.067	65	333656	53.361	ug/l	0.00
Spiked Amount	50.000	Range	50 - 163	Recovery	=	106.720%
35) Dibromofluoromethane	7.634	113	374793	47.160	ug/l	0.00
Spiked Amount	50.000	Range	54 - 147	Recovery	=	94.320%
50) Toluene-d8	10.109	98	1430117	48.333	ug/l	0.00
Spiked Amount	50.000	Range	58 - 134	Recovery	=	96.660%
62) 4-Bromofluorobenzene	12.408	95	453422	45.887	ug/l	0.00
Spiked Amount	50.000	Range	30 - 143	Recovery	=	91.780%
Target Compounds						
					Qvalue	
10) Methyl Iodide	4.019	142	305	Below Cal	#	41
11) Tert butyl alcohol	4.866	59	4204	11.611	ug/l #	92
16) Acetone	3.872	43	28180	Below Cal		99
17) Carbon Disulfide	4.116	76	96434	5.658	ug/l	99
20) Methylene Chloride	4.622	84	25767	3.503	ug/l	96
25) 2-Butanone	6.915	43	3608	1.867	ug/l #	78
31) Cyclohexane	7.707	56	17945	1.673	ug/l #	42
36) 1,1-Dichloropropene	7.707	75	45639	4.218	ug/l #	49
38) Carbon Tetrachloride	7.713	117	65154	4.968	ug/l #	16
39) Methylcyclohexane	9.109	83	14677	1.015	ug/l #	85
49) 1,4-Dioxane	9.207	88	55	1.127	ug/l #	1
52) Toluene	10.170	92	685685	31.450	ug/l	100
55) 1,1,2-Trichloroethane	10.548	97	19700	3.269	ug/l #	22
59) 2-Hexanone	10.731	43	22420	6.719	ug/l #	28
67) Ethyl Benzene	11.517	91	943012	22.330	ug/l	98
68) m/p-Xylenes	11.627	106	1261873	75.271	ug/l	100
69) o-Xylene	11.956	106	491687	31.353	ug/l	100
73) Isopropylbenzene	12.255	105	118719	3.377	ug/l	98
74) N-amyl acetate	12.054	43	22324	3.580	ug/l #	52
75) 1,1,2,2-Tetrachloroethane	12.572	83	5532	1.033	ug/l #	49
76) 1,2,3-Trichloropropane	12.657	75	9503	2.336	ug/l #	100
78) n-propylbenzene	12.597	91	392781	9.603	ug/l	100
79) 2-Chlorotoluene	12.657	91	139951	6.024	ug/l #	39
80) 1,3,5-Trimethylbenzene	12.737	105	462298	16.484	ug/l	99
81) trans-1,4-Dichloro-2-b...	12.408	75	227064	127.025	ug/l #	12
82) 4-Chlorotoluene	12.737	91	48126	2.012	ug/l #	41
84) 1,2,4-Trimethylbenzene	13.042	105	1340262	48.242	ug/l	100
85) sec-Butylbenzene	13.042	105	1340262	35.457	ug/l #	55
86) p-Isopropyltoluene	13.237	119	48932	1.529	ug/l	98
89) n-Butylbenzene	13.615	91	47957	1.713	ug/l #	67
90) Hexachloroethane	13.895	117	24903	3.814	ug/l #	7
95) Naphthalene	15.145	128	114894	8.614	ug/l	99

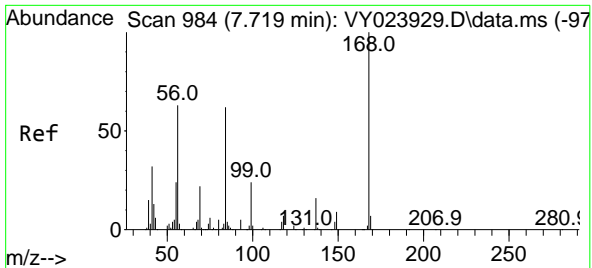
(#) = qualifier out of range (m) = manual integration (+) = signals summed

Data Path : Z:\voasrv\HPCHEM1\MSVOA\_Y\Data\VY121125\  
 Data File : VY023956.D  
 Acq On : 11 Dec 2025 15:41  
 Operator : SY/MD  
 Sample : Q3809-09RE  
 Misc : 2.26g/5.0mL/MSVOA\_Y/SOIL  
 ALS Vial : 2 Sample Multiplier: 1

Instrument :  
 MSVOA\_Y  
 ClientSampleId :  
 SW-6

Quant Time: Dec 12 03:25:08 2025  
 Quant Method : Z:\voasrv\HPCHEM1\MSVOA\_Y\methods\82Y121025S.M  
 Quant Title : SW846 8260  
 QLast Update : Thu Dec 11 03:57:51 2025  
 Response via : Initial Calibration

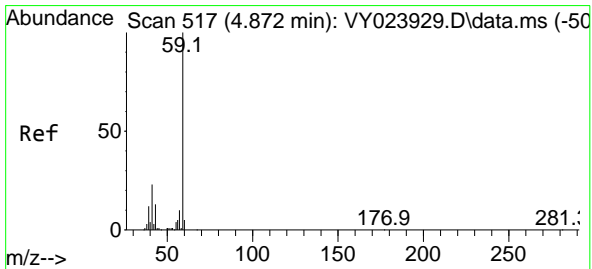
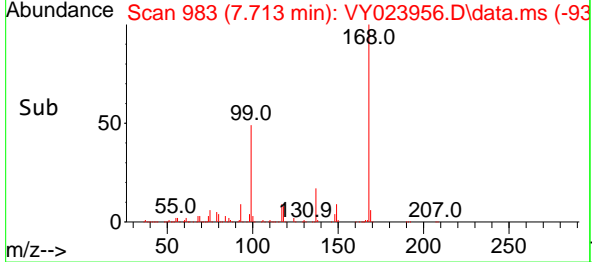
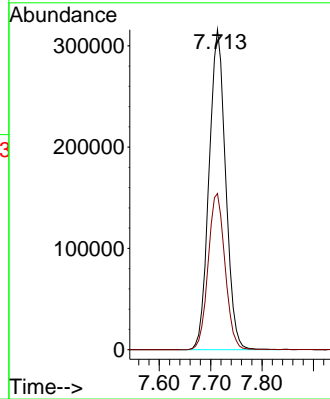
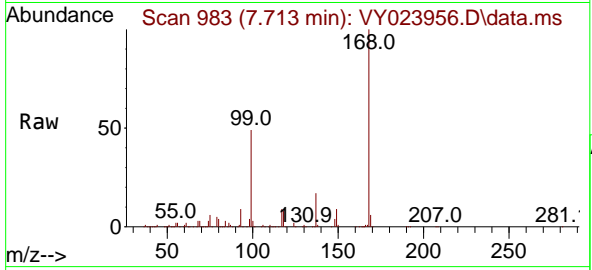




#1  
 Pentafluorobenzene  
 Concen: 50.000 ug/l  
 RT: 7.713 min Scan# 91  
 Delta R.T. -0.006 min  
 Lab File: VY023956.D  
 Acq: 11 Dec 2025 15:41

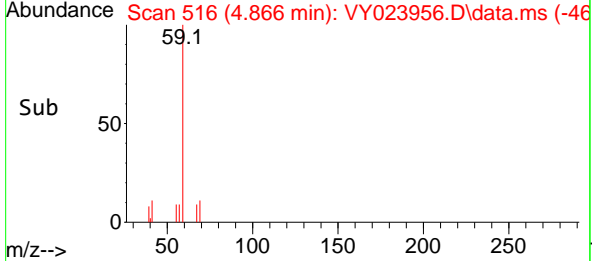
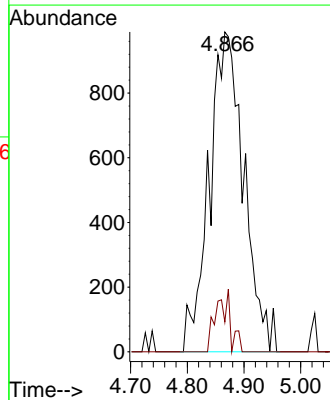
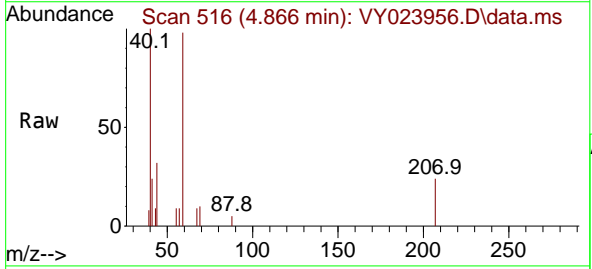
Instrument :  
 MSVOA\_Y  
 ClientSampleId :  
 SW-6

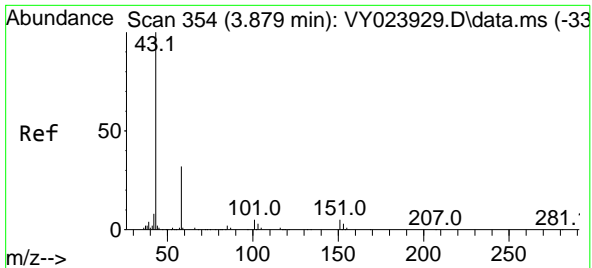
Tgt Ion:168 Resp: 707218  
 Ion Ratio Lower Upper  
 168 100  
 99 48.8 38.9 58.3



#11  
 Tert butyl alcohol  
 Concen: 11.611 ug/l  
 RT: 4.866 min Scan# 516  
 Delta R.T. -0.006 min  
 Lab File: VY023956.D  
 Acq: 11 Dec 2025 15:41

Tgt Ion: 59 Resp: 4204  
 Ion Ratio Lower Upper  
 59 100  
 57 8.0 8.7 13.1#

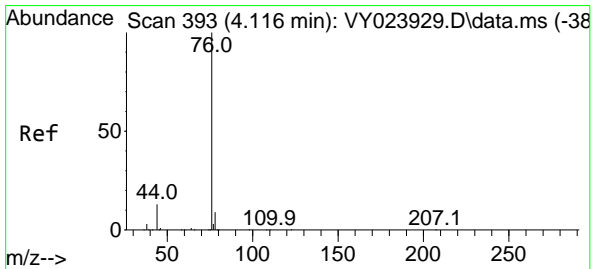
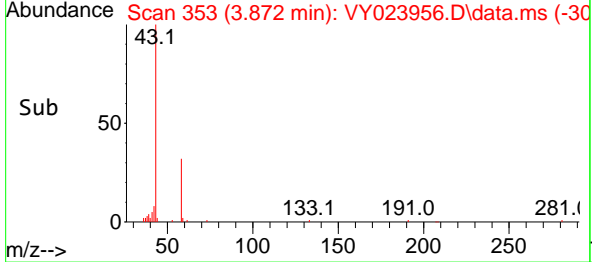
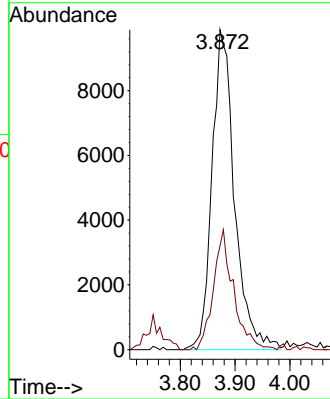
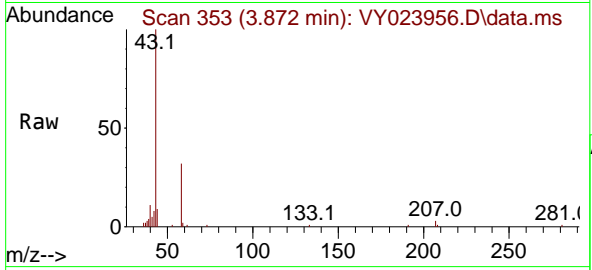




#16  
 Acetone  
 Concen: Below Cal  
 RT: 3.872 min Scan# 31  
 Delta R.T. -0.006 min  
 Lab File: VY023956.D  
 Acq: 11 Dec 2025 15:41

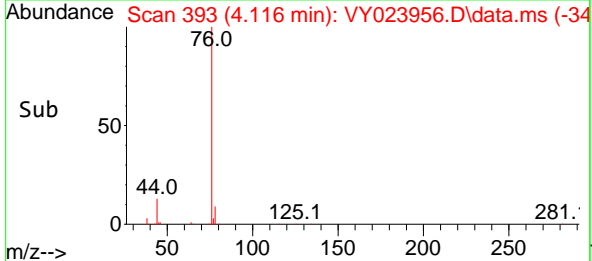
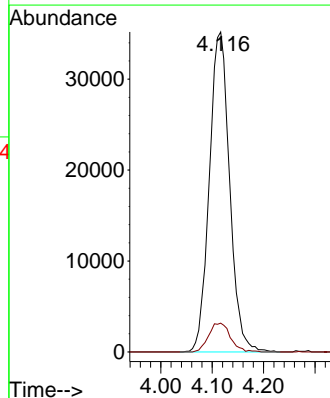
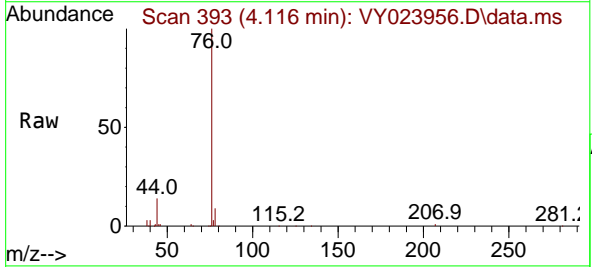
Instrument :  
 MSVOA\_Y  
 ClientSampleId :  
 SW-6

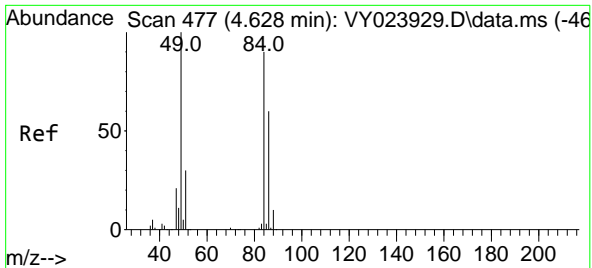
Tgt Ion: 43 Resp: 28180  
 Ion Ratio Lower Upper  
 43 100  
 58 32.5 26.4 39.6



#17  
 Carbon Disulfide  
 Concen: 5.658 ug/l  
 RT: 4.116 min Scan# 393  
 Delta R.T. -0.000 min  
 Lab File: VY023956.D  
 Acq: 11 Dec 2025 15:41

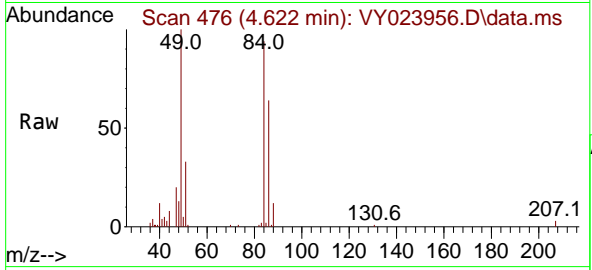
Tgt Ion: 76 Resp: 96434  
 Ion Ratio Lower Upper  
 76 100  
 78 9.0 7.4 11.2



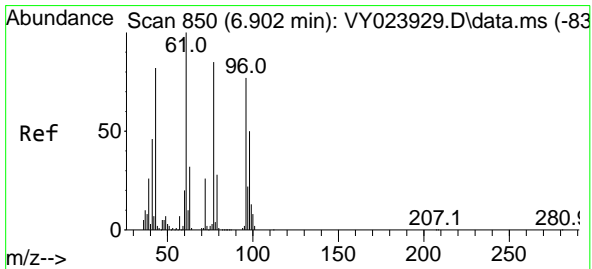
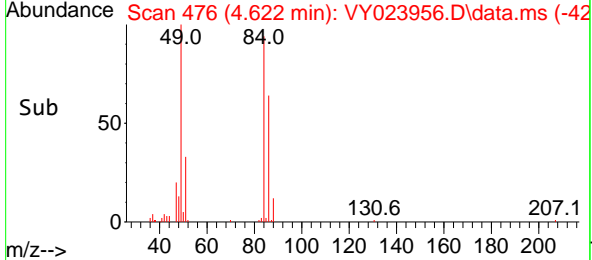
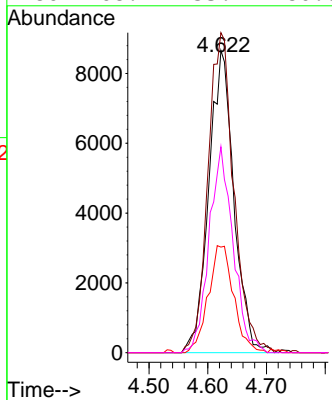


#20  
 Methylene Chloride  
 Concen: 3.503 ug/l  
 RT: 4.622 min Scan# 41  
 Delta R.T. -0.006 min  
 Lab File: VY023956.D  
 Acq: 11 Dec 2025 15:41

Instrument : MSVOA\_Y  
 ClientSampleId : SW-6

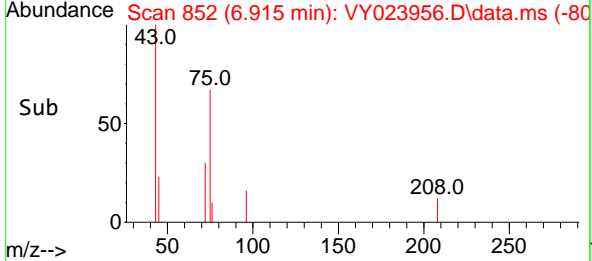
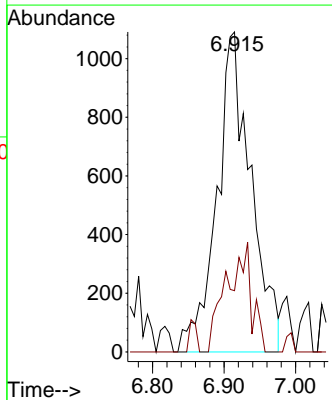
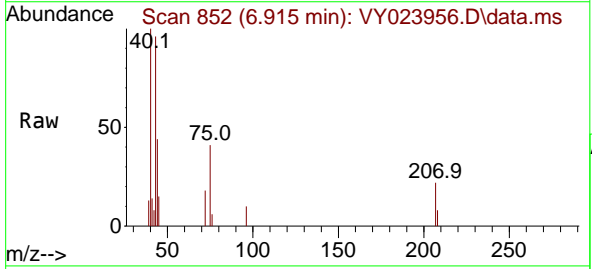


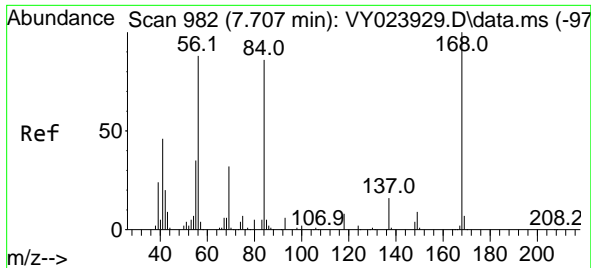
Tgt Ion	Resp	Lower	Upper
84	100		
49	105.9	89.1	133.7
51	34.9	26.6	39.8
86	68.1	53.4	80.0



#25  
 2-Butanone  
 Concen: 1.867 ug/l  
 RT: 6.915 min Scan# 852  
 Delta R.T. 0.012 min  
 Lab File: VY023956.D  
 Acq: 11 Dec 2025 15:41

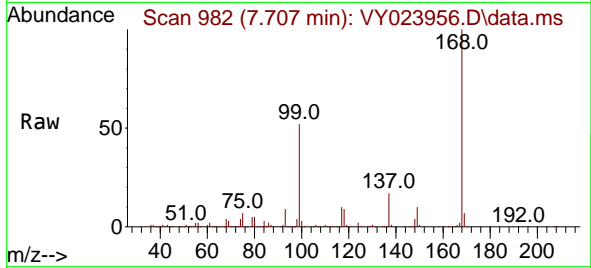
Tgt Ion	Resp	Lower	Upper
43	100		
72	19.2	25.0	37.6#



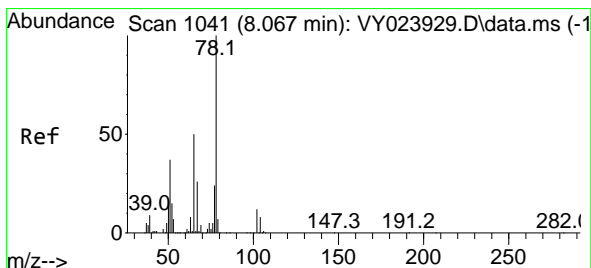
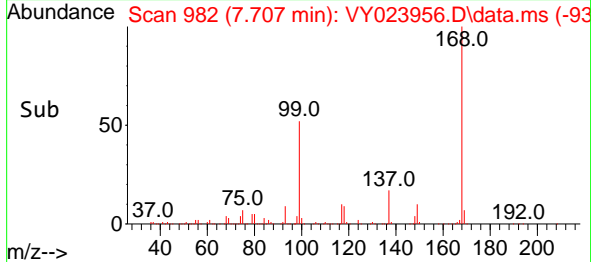
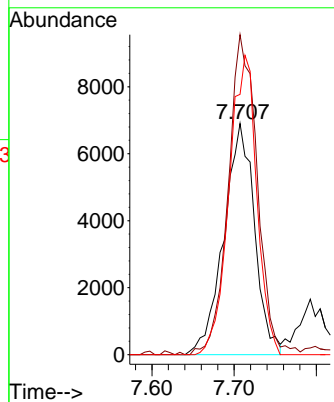


#31  
 Cyclohexane  
 Concen: 1.673 ug/l  
 RT: 7.707 min Scan# 91  
 Delta R.T. -0.000 min  
 Lab File: VY023956.D  
 Acq: 11 Dec 2025 15:41

Instrument :  
 MSVOA\_Y  
 ClientSampleId :  
 SW-6

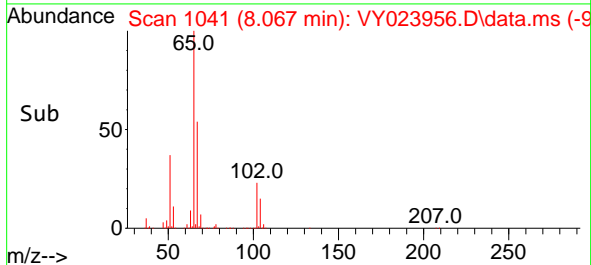
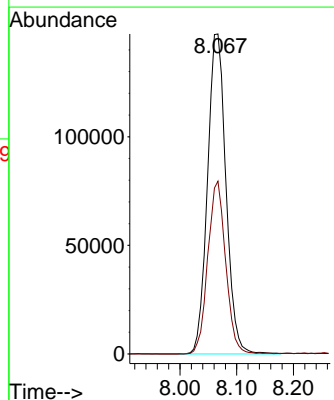
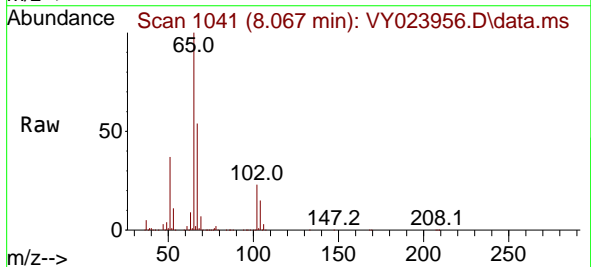


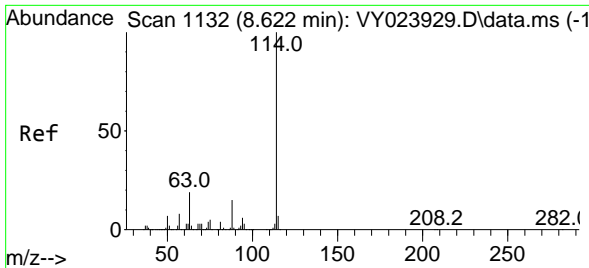
Tgt Ion: 56 Resp: 17945  
 Ion Ratio Lower Upper  
 56 100  
 69 137.4 29.1 43.7#  
 84 112.6 77.8 116.8



#33  
 1,2-Dichloroethane-d4  
 Concen: 53.361 ug/l  
 RT: 8.067 min Scan# 1041  
 Delta R.T. -0.000 min  
 Lab File: VY023956.D  
 Acq: 11 Dec 2025 15:41

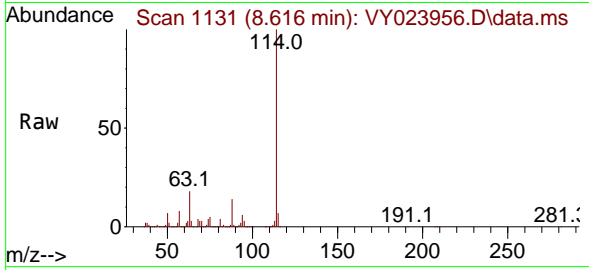
Tgt Ion: 65 Resp: 333656  
 Ion Ratio Lower Upper  
 65 100  
 67 52.3 0.0 106.2





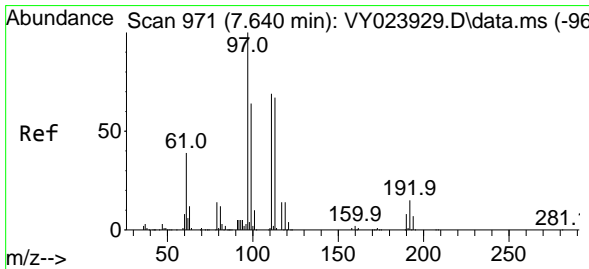
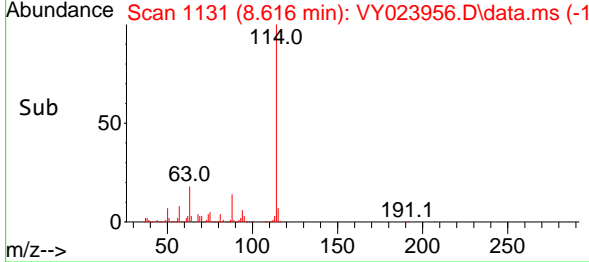
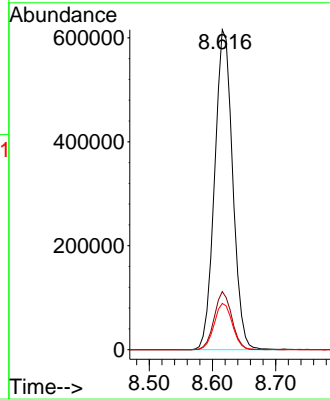
#34  
 1,4-Difluorobenzene  
 Concen: 50.000 ug/l  
 RT: 8.616 min Scan# 1131  
 Delta R.T. -0.006 min  
 Lab File: VY023956.D  
 Acq: 11 Dec 2025 15:41

Instrument : MSVOA\_Y  
 ClientSampleId : SW-6

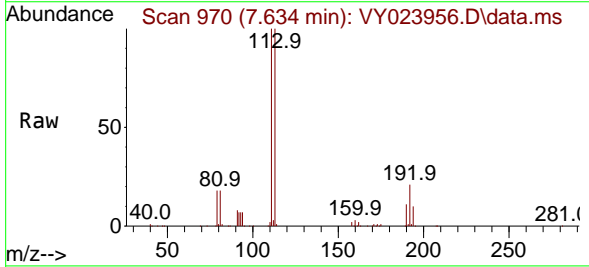


Tgt Ion:114 Resp: 1215755

Ion	Ratio	Lower	Upper
114	100		
63	18.1	0.0	37.2
88	14.4	0.0	29.4

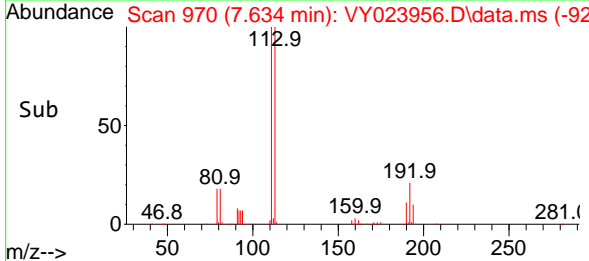
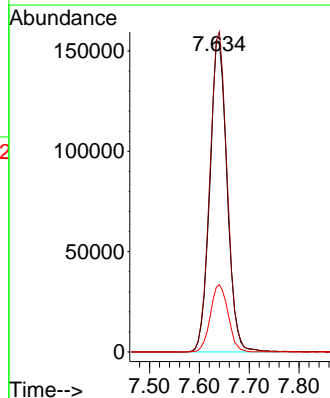


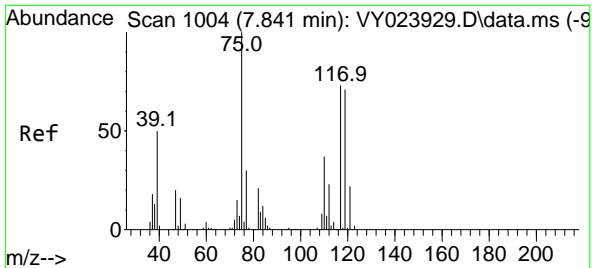
#35  
 Dibromofluoromethane  
 Concen: 47.160 ug/l  
 RT: 7.634 min Scan# 970  
 Delta R.T. -0.006 min  
 Lab File: VY023956.D  
 Acq: 11 Dec 2025 15:41



Tgt Ion:113 Resp: 374793

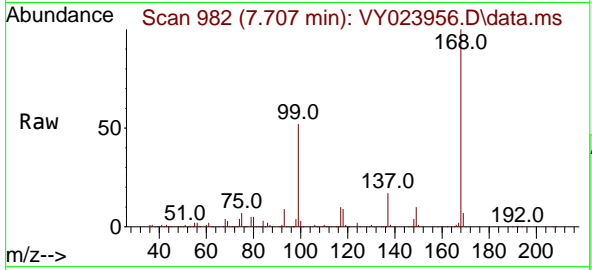
Ion	Ratio	Lower	Upper
113	100		
111	102.8	82.4	123.6
192	22.1	17.9	26.9



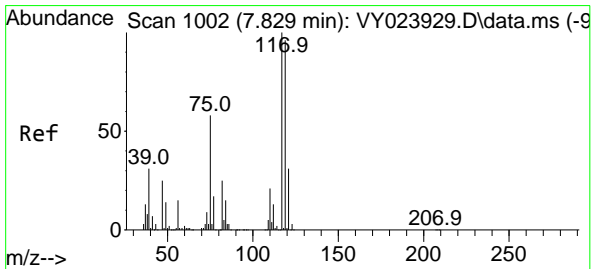
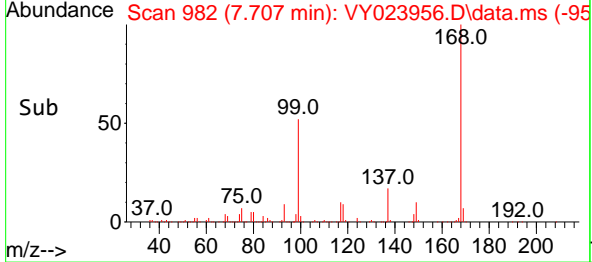
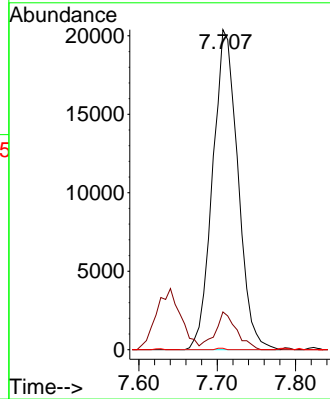


#36  
 1,1-Dichloropropene  
 Concen: 4.218 ug/l  
 RT: 7.707 min Scan# 91  
 Delta R.T. -0.134 min  
 Lab File: VY023956.D  
 Acq: 11 Dec 2025 15:41

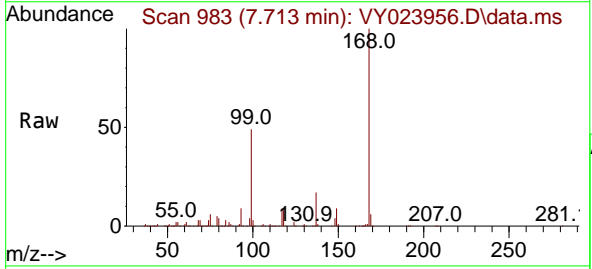
Instrument :  
 MSVOA\_Y  
 ClientSampleId :  
 SW-6



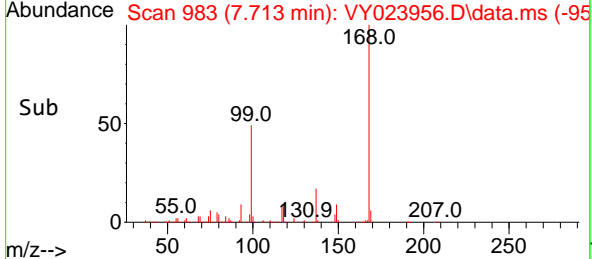
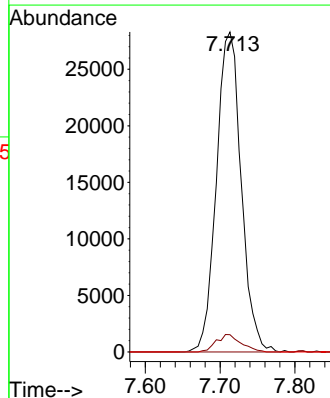
Tgt Ion: 75 Resp: 45639  
 Ion Ratio Lower Upper  
 75 100  
 110 10.0 19.2 57.6#  
 77 0.0 24.4 36.6#



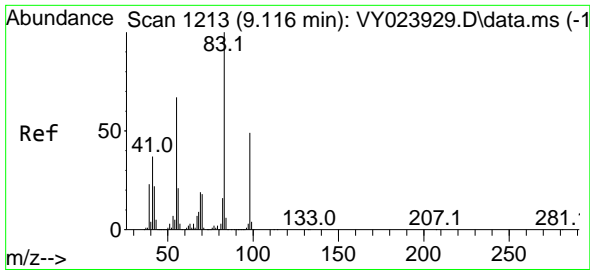
#38  
 Carbon Tetrachloride  
 Concen: 4.968 ug/l  
 RT: 7.713 min Scan# 983  
 Delta R.T. -0.116 min  
 Lab File: VY023956.D  
 Acq: 11 Dec 2025 15:41



Tgt Ion: 117 Resp: 65154  
 Ion Ratio Lower Upper  
 117 100  
 119 5.4 76.6 114.8#  
 121 0.0 24.8 37.2#





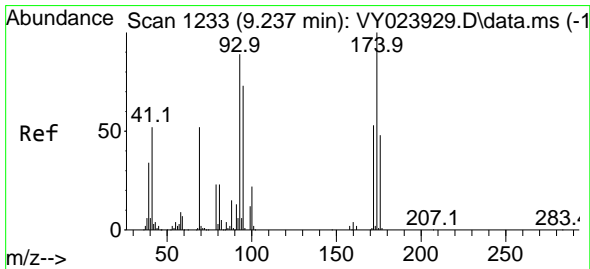
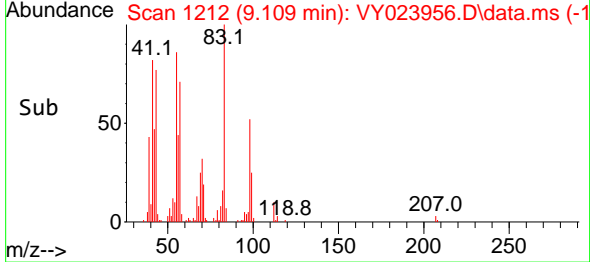
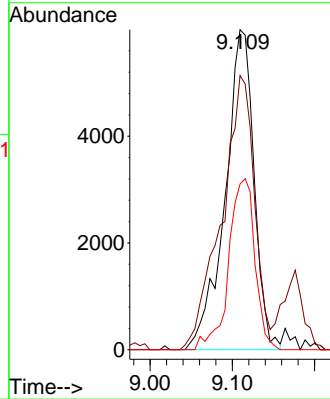
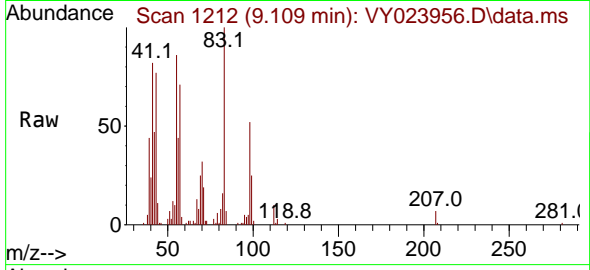


#39  
 Methylcyclohexane  
 Concen: 1.015 ug/l  
 RT: 9.109 min Scan# 11  
 Delta R.T. -0.006 min  
 Lab File: VY023956.D  
 Acq: 11 Dec 2025 15:41

Instrument : MSVOA\_Y  
 ClientSampleId : SW-6

Tgt Ion: 83 Resp: 14677

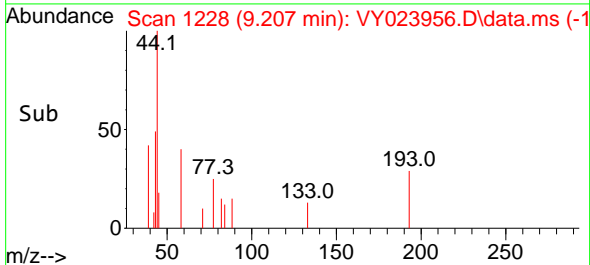
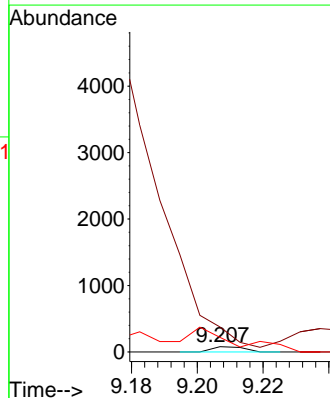
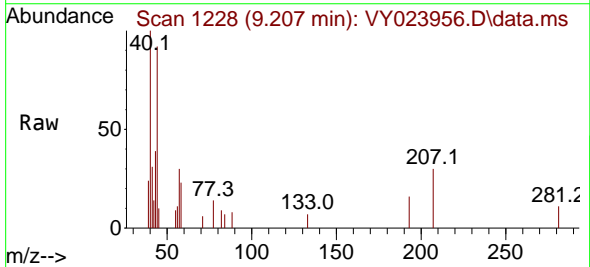
Ion	Ratio	Lower	Upper
83	100		
55	85.6	53.4	80.0#
98	51.7	39.2	58.8

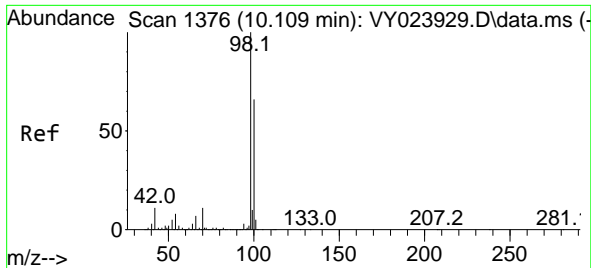


#49  
 1,4-Dioxane  
 Concen: 1.127 ug/l  
 RT: 9.207 min Scan# 1228  
 Delta R.T. -0.031 min  
 Lab File: VY023956.D  
 Acq: 11 Dec 2025 15:41

Tgt Ion: 88 Resp: 55

Ion	Ratio	Lower	Upper
88	100		
43	0.0	22.3	33.5#
58	730.9	52.3	78.5#

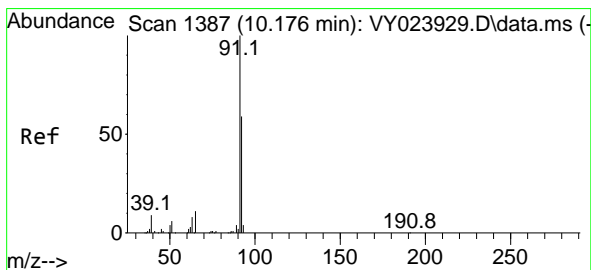
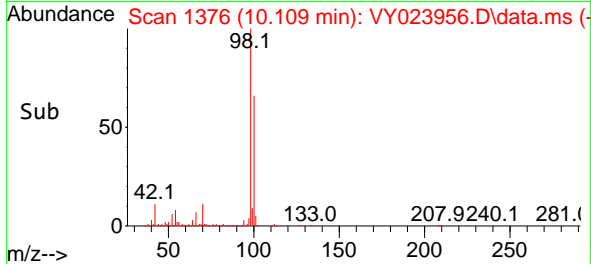
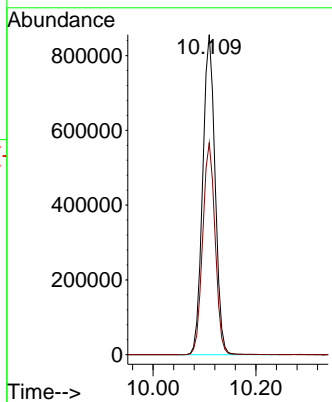
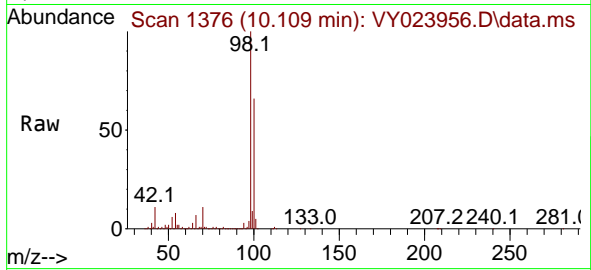




#50  
 Toluene-d8  
 Concen: 48.333 ug/l  
 RT: 10.109 min Scan# 1376  
 Delta R.T. -0.000 min  
 Lab File: VY023956.D  
 Acq: 11 Dec 2025 15:41

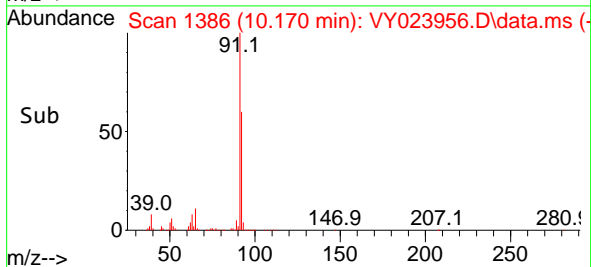
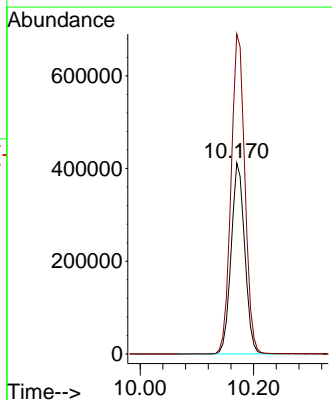
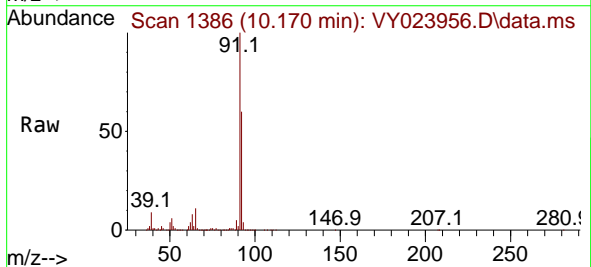
Instrument : MSVOA\_Y  
 ClientSampleId : SW-6

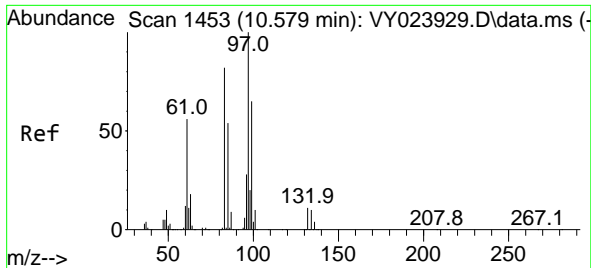
Tgt Ion: 98 Resp: 1430117  
 Ion Ratio Lower Upper  
 98 100  
 100 66.3 52.8 79.2



#52  
 Toluene  
 Concen: 31.450 ug/l  
 RT: 10.170 min Scan# 1386  
 Delta R.T. -0.006 min  
 Lab File: VY023956.D  
 Acq: 11 Dec 2025 15:41

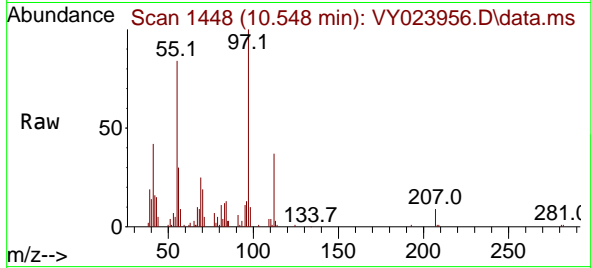
Tgt Ion: 92 Resp: 685685  
 Ion Ratio Lower Upper  
 92 100  
 91 169.9 135.8 203.6





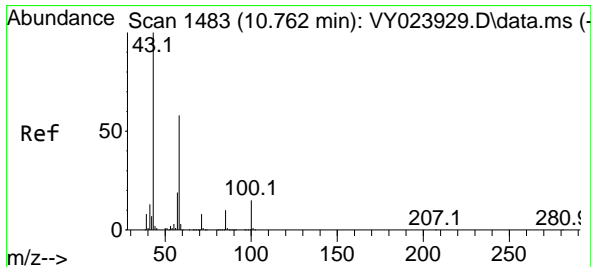
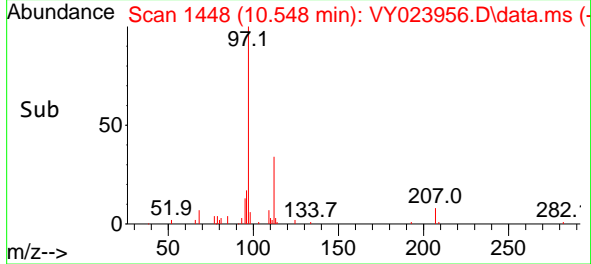
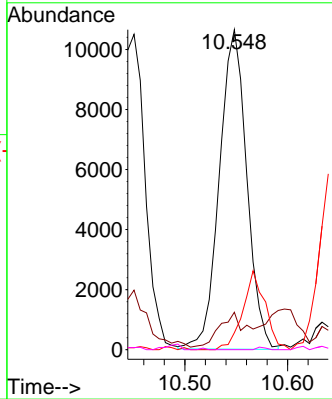
#55  
 1,1,2-Trichloroethane  
 Concen: 3.269 ug/l  
 RT: 10.548 min Scan# 1448  
 Delta R.T. -0.031 min  
 Lab File: VY023956.D  
 Acq: 11 Dec 2025 15:41

Instrument : MSVOA\_Y  
 ClientSampleId : SW-6



Tgt Ion: 97 Resp: 19700

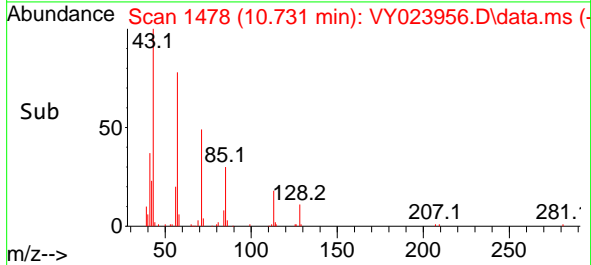
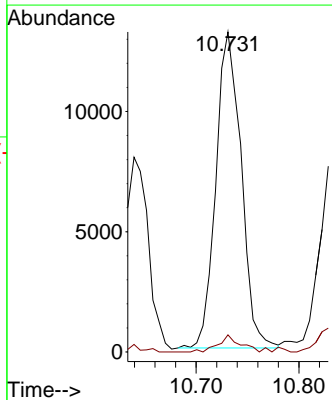
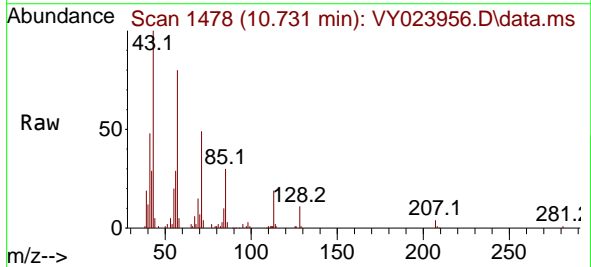
Ion	Ratio	Lower	Upper
97	100		
83	9.2	65.8	98.6#
85	5.4	43.1	64.7#
99	0.0	51.6	77.4#

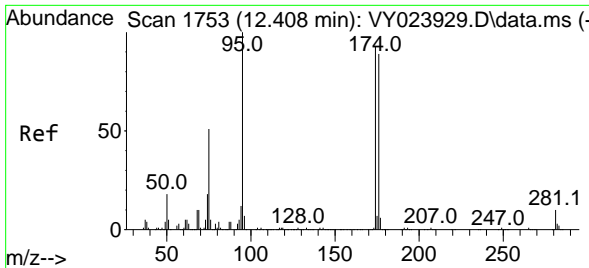


#59  
 2-Hexanone  
 Concen: 6.719 ug/l  
 RT: 10.731 min Scan# 1478  
 Delta R.T. -0.031 min  
 Lab File: VY023956.D  
 Acq: 11 Dec 2025 15:41

Tgt Ion: 43 Resp: 22420

Ion	Ratio	Lower	Upper
43	100		
58	4.6	29.0	87.0#



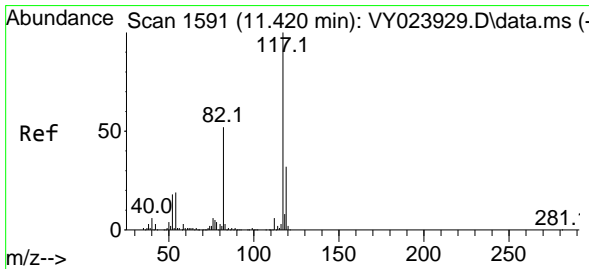
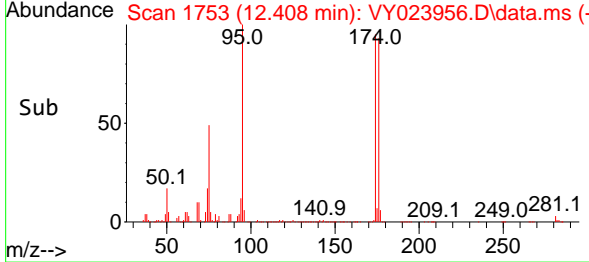
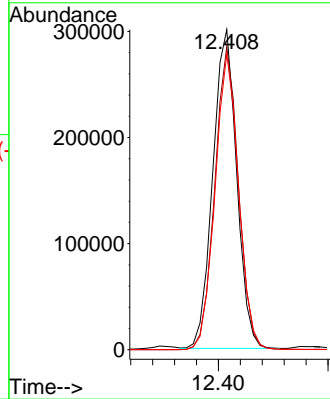
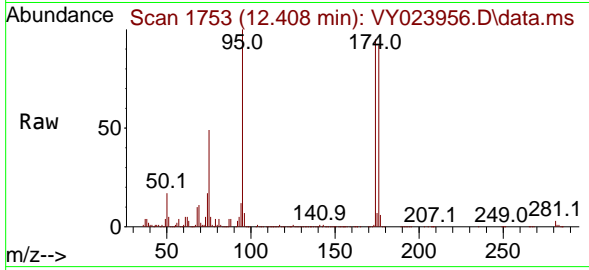


#62  
 4-Bromofluorobenzene  
 Concen: 45.887 ug/l  
 RT: 12.408 min Scan# 1753  
 Delta R.T. -0.000 min  
 Lab File: VY023956.D  
 Acq: 11 Dec 2025 15:41

Instrument : MSVOA\_Y  
 ClientSampleId : SW-6

Tgt Ion: 95 Resp: 453422

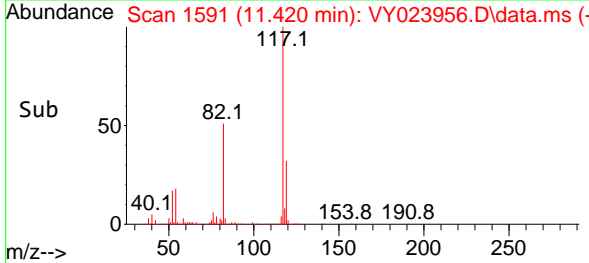
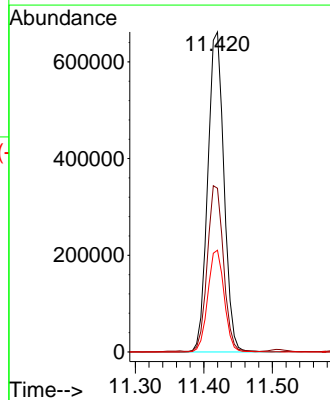
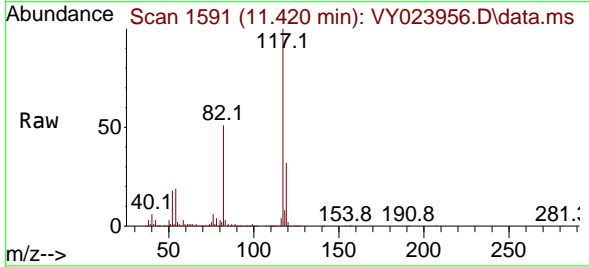
Ion	Ratio	Lower	Upper
95	100		
174	94.4	0.0	187.4
176	91.8	0.0	179.6

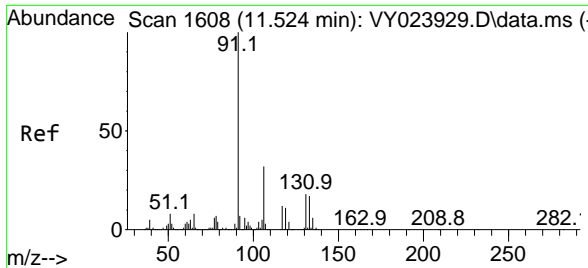


#63  
 Chlorobenzene-d5  
 Concen: 50.000 ug/l  
 RT: 11.420 min Scan# 1591  
 Delta R.T. -0.000 min  
 Lab File: VY023956.D  
 Acq: 11 Dec 2025 15:41

Tgt Ion: 117 Resp: 1087731

Ion	Ratio	Lower	Upper
117	100		
82	50.8	41.4	62.2
119	31.8	25.5	38.3

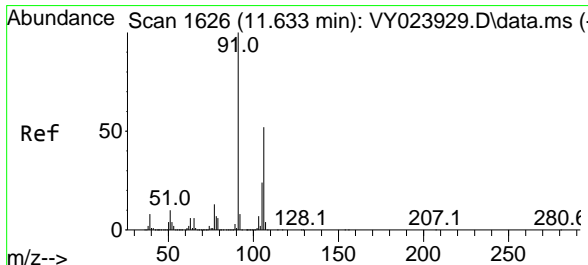
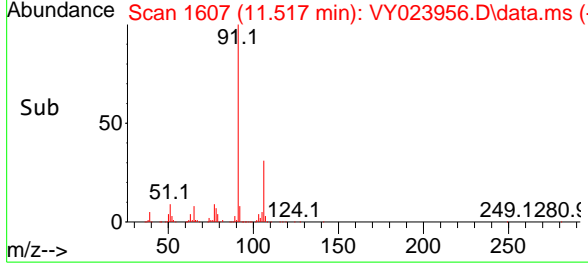
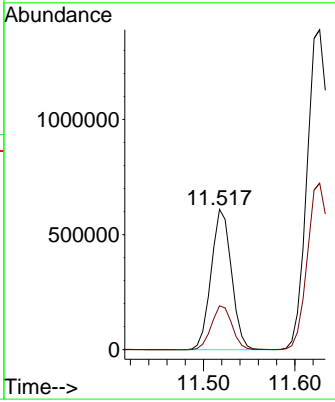
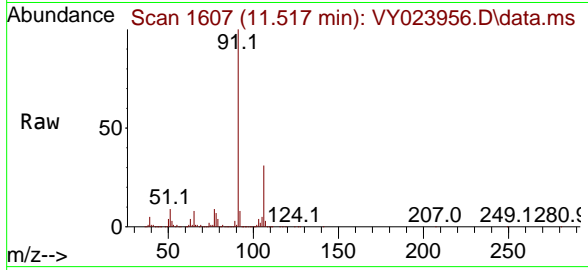




#67  
 Ethyl Benzene  
 Concen: 22.330 ug/l  
 RT: 11.517 min Scan# 1607  
 Delta R.T. -0.006 min  
 Lab File: VY023956.D  
 Acq: 11 Dec 2025 15:41

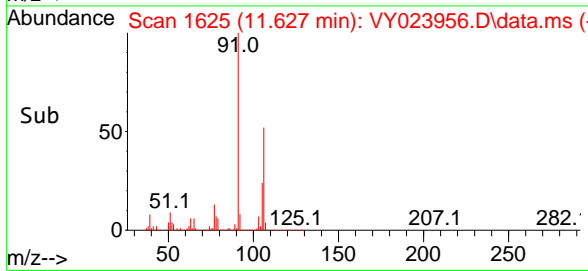
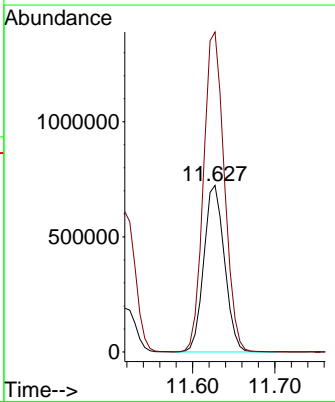
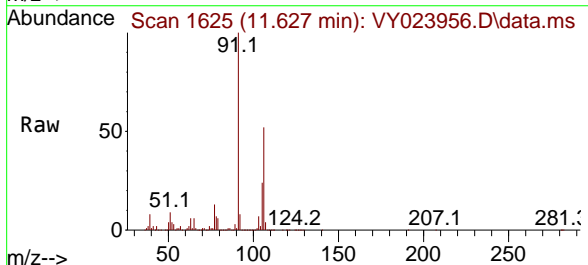
Instrument : MSVOA\_Y  
 ClientSampled : SW-6

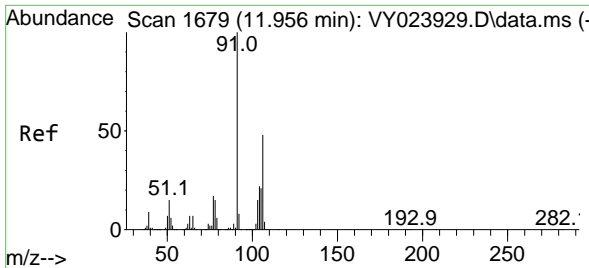
Tgt Ion: 91 Resp: 943012  
 Ion Ratio Lower Upper  
 91 100  
 106 31.2 25.8 38.8



#68  
 m/p-Xylenes  
 Concen: 75.271 ug/l  
 RT: 11.627 min Scan# 1625  
 Delta R.T. -0.006 min  
 Lab File: VY023956.D  
 Acq: 11 Dec 2025 15:41

Tgt Ion:106 Resp: 1261873  
 Ion Ratio Lower Upper  
 106 100  
 91 193.9 155.0 232.6

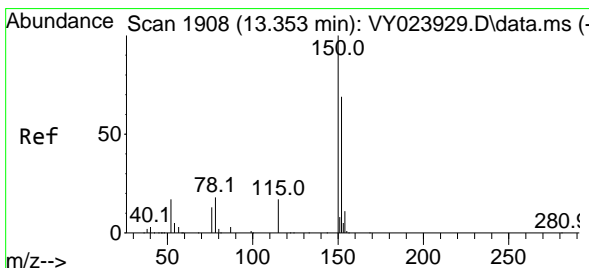
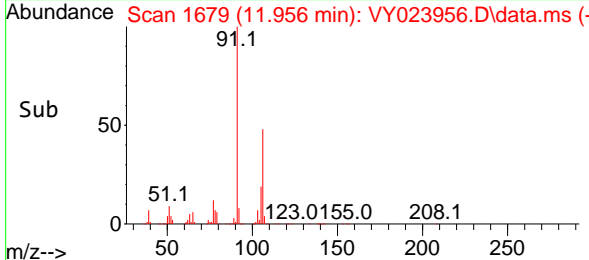
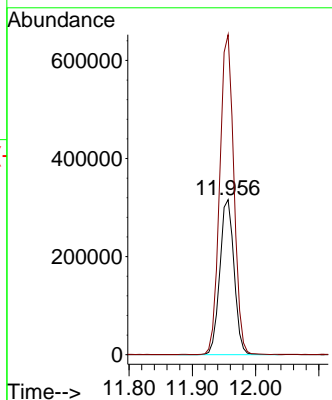
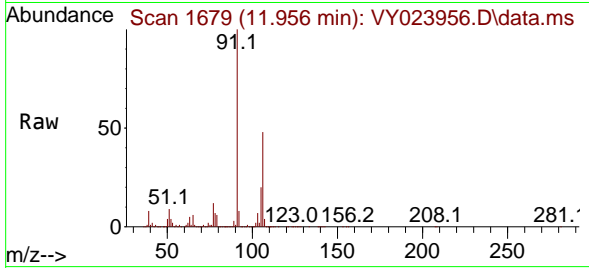




#69  
 o-Xylene  
 Concen: 31.353 ug/l  
 RT: 11.956 min Scan# 11  
 Delta R.T. -0.000 min  
 Lab File: VY023956.D  
 Acq: 11 Dec 2025 15:41

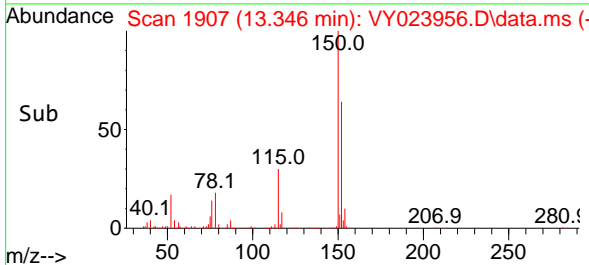
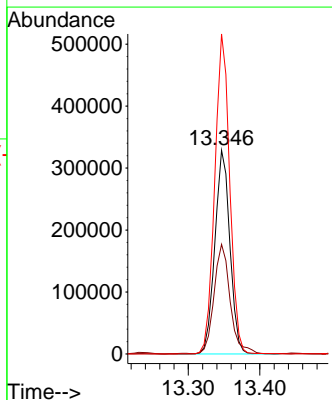
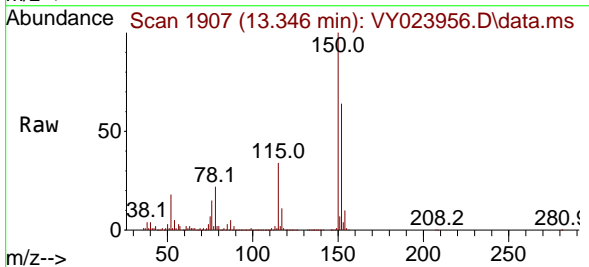
Instrument : MSVOA\_Y  
 ClientSampleId : SW-6

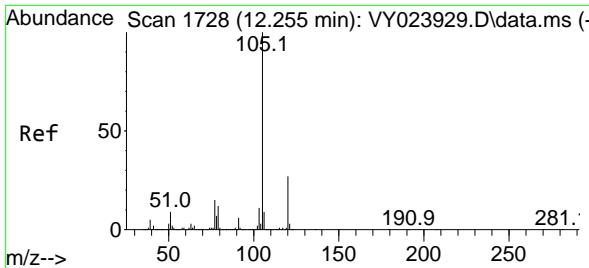
Tgt Ion:106 Resp: 491687  
 Ion Ratio Lower Upper  
 106 100  
 91 204.9 102.1 306.1



#72  
 1,4-Dichlorobenzene-d4  
 Concen: 50.000 ug/l  
 RT: 13.346 min Scan# 1907  
 Delta R.T. -0.006 min  
 Lab File: VY023956.D  
 Acq: 11 Dec 2025 15:41

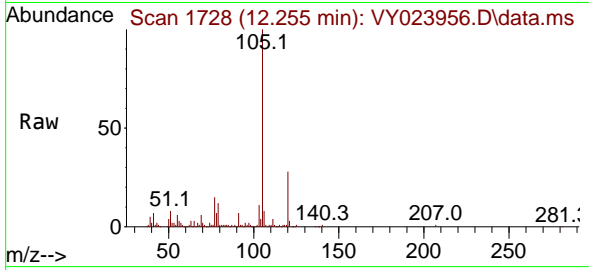
Tgt Ion:152 Resp: 481018  
 Ion Ratio Lower Upper  
 152 100  
 115 57.1 27.3 81.9  
 150 155.8 0.0 347.6



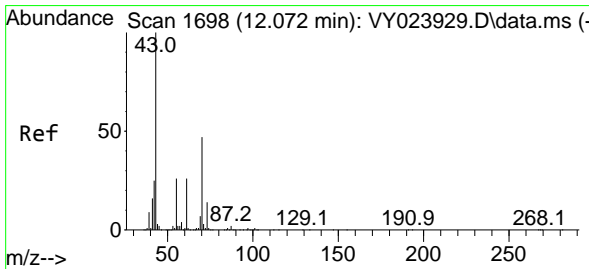
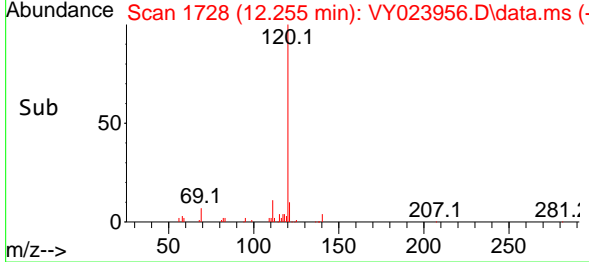
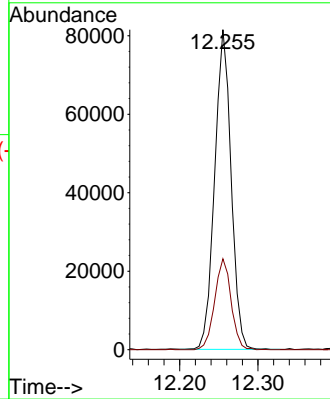


#73  
 Isopropylbenzene  
 Concen: 3.377 ug/l  
 RT: 12.255 min Scan# 11  
 Delta R.T. -0.000 min  
 Lab File: VY023956.D  
 Acq: 11 Dec 2025 15:41

Instrument : MSVOA\_Y  
 ClientSampleId : SW-6

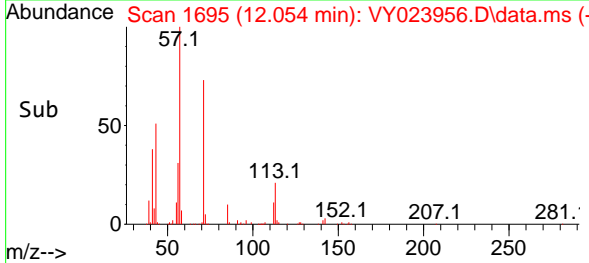
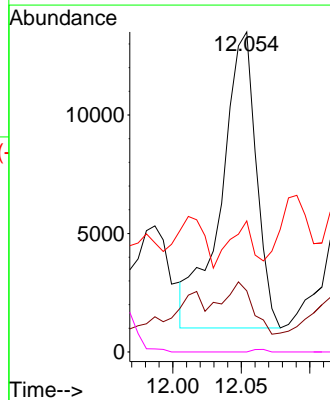
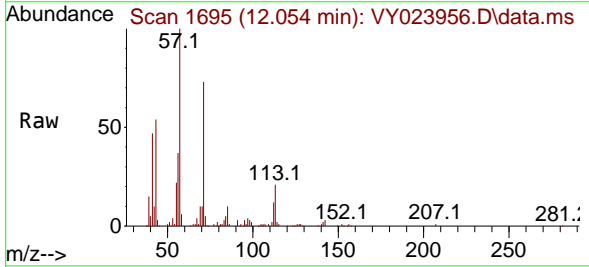


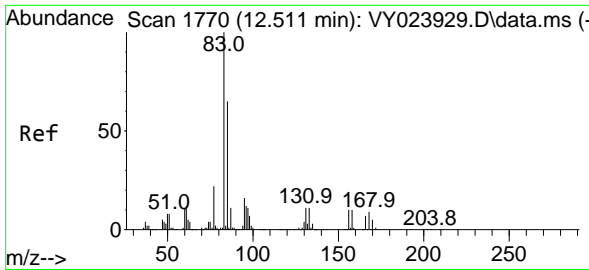
Tgt Ion: 105 Resp: 118719  
 Ion Ratio Lower Upper  
 105 100  
 120 28.4 13.7 41.0



#74  
 N-amy1 acetate  
 Concen: 3.580 ug/l  
 RT: 12.054 min Scan# 1695  
 Delta R.T. -0.018 min  
 Lab File: VY023956.D  
 Acq: 11 Dec 2025 15:41

Tgt Ion: 43 Resp: 22324  
 Ion Ratio Lower Upper  
 43 100  
 70 11.1 37.4 56.0#  
 55 7.9 21.6 32.4#  
 61 0.0 20.7 31.1#

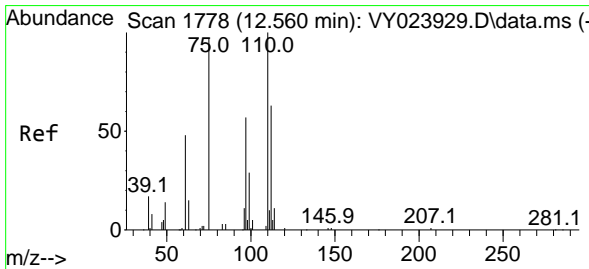
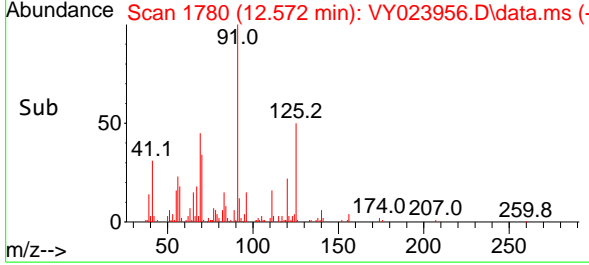
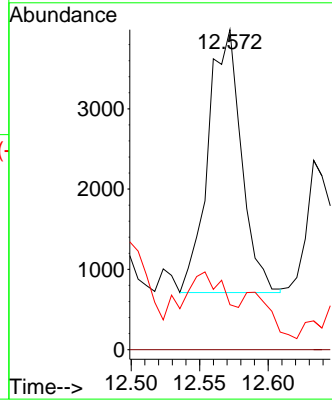
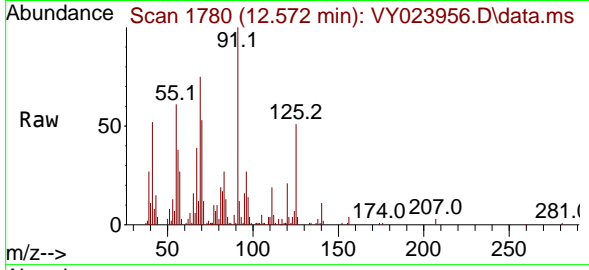




#75  
 1,1,2,2-Tetrachloroethane  
 Concen: 1.033 ug/l  
 RT: 12.572 min Scan# 1780  
 Delta R.T. 0.061 min  
 Lab File: VY023956.D  
 Acq: 11 Dec 2025 15:41

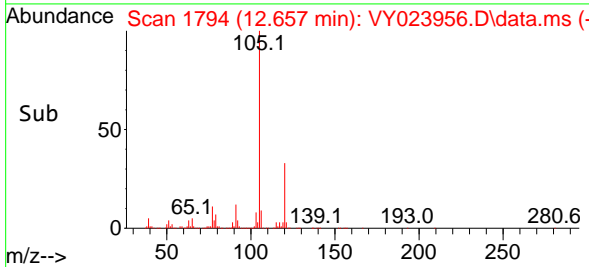
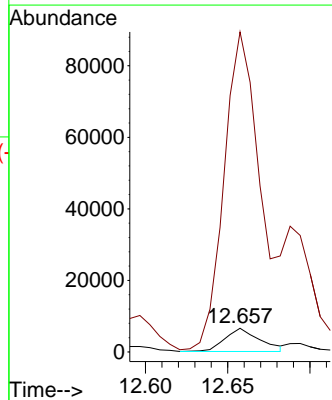
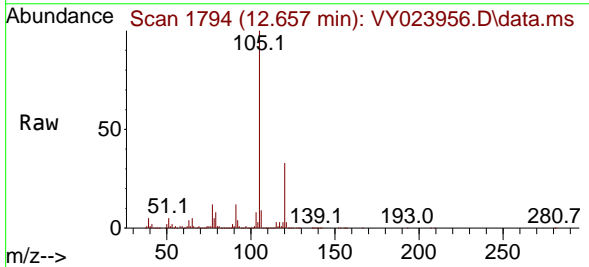
Instrument : MSVOA\_Y  
 ClientSampleId : SW-6

Tgt Ion: 83 Resp: 5532  
 Ion Ratio Lower Upper  
 83 100  
 131 0.0 5.6 16.8#  
 85 20.8 32.0 96.2#

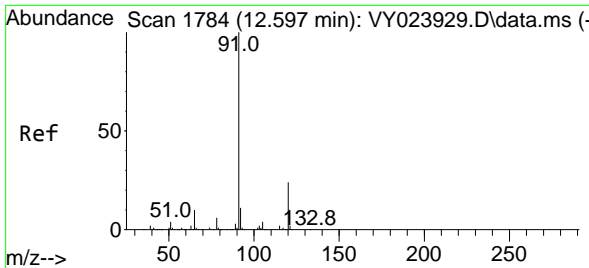


#76  
 1,2,3-Trichloropropane  
 Concen: 2.336 ug/l  
 RT: 12.657 min Scan# 1794  
 Delta R.T. 0.097 min  
 Lab File: VY023956.D  
 Acq: 11 Dec 2025 15:41

Tgt Ion: 75 Resp: 9503  
 Ion Ratio Lower Upper  
 75 100  
 77 1461.3 0.0 0.0#

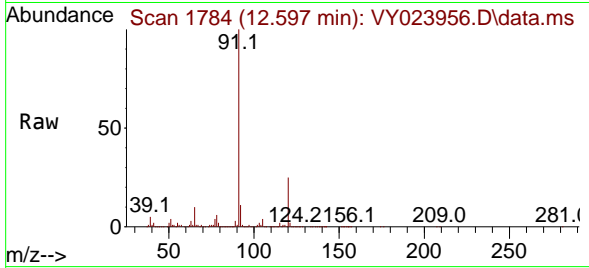




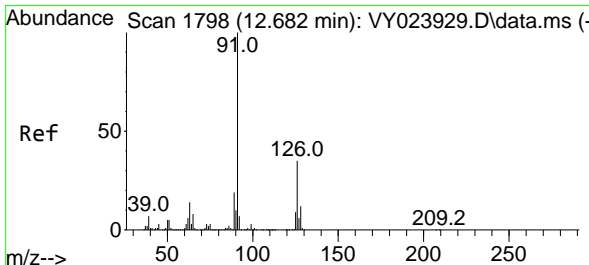
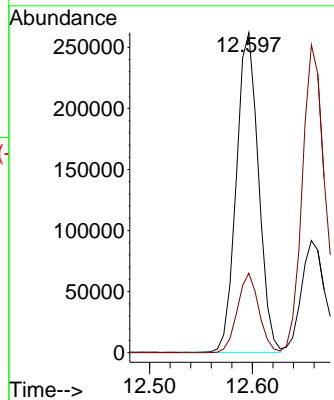
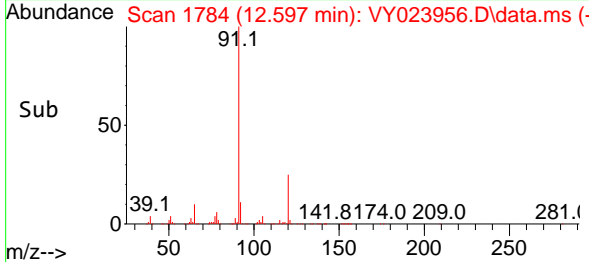


#78  
 n-propylbenzene  
 Concen: 9.603 ug/l  
 RT: 12.597 min Scan# 1784  
 Delta R.T. -0.000 min  
 Lab File: VY023956.D  
 Acq: 11 Dec 2025 15:41

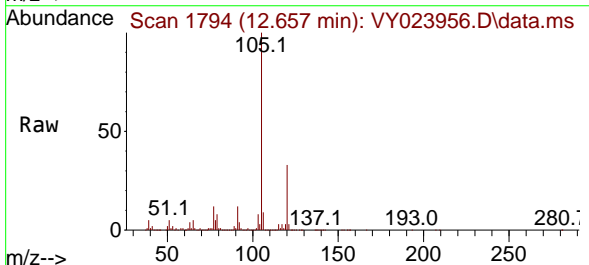
Instrument : MSVOA\_Y  
 ClientSampleId : SW-6



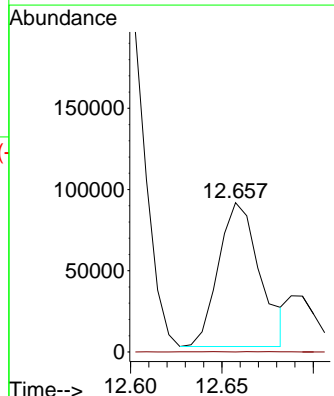
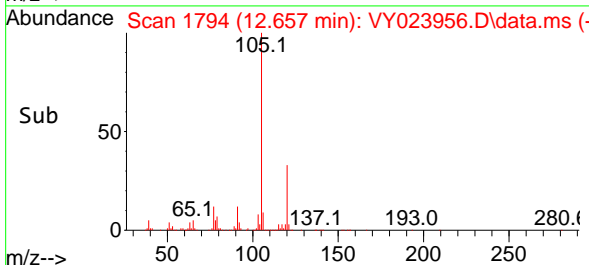
Tgt Ion: 91 Resp: 392781  
 Ion Ratio Lower Upper  
 91 100  
 120 24.1 12.0 36.0

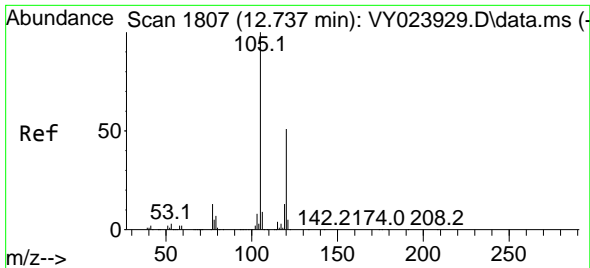


#79  
 2-Chlorotoluene  
 Concen: 6.024 ug/l  
 RT: 12.657 min Scan# 1794  
 Delta R.T. -0.024 min  
 Lab File: VY023956.D  
 Acq: 11 Dec 2025 15:41



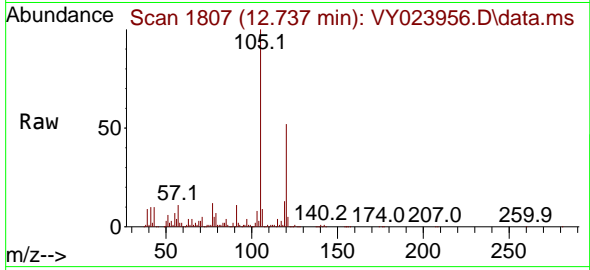
Tgt Ion: 91 Resp: 139951  
 Ion Ratio Lower Upper  
 91 100  
 126 0.2 17.9 53.7#



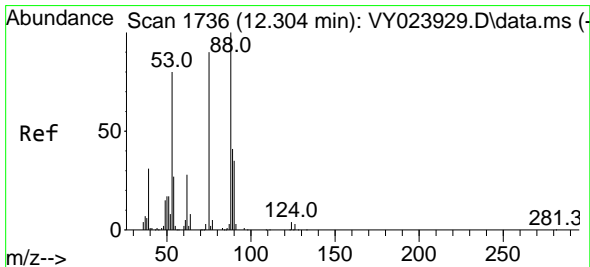
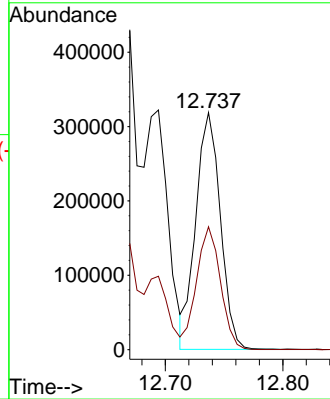
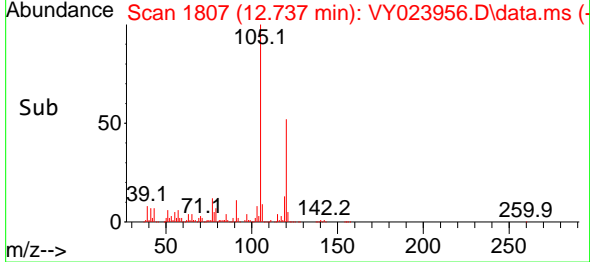


#80  
 1,3,5-Trimethylbenzene  
 Concen: 16.484 ug/l  
 RT: 12.737 min Scan# 11  
 Delta R.T. -0.000 min  
 Lab File: VY023956.D  
 Acq: 11 Dec 2025 15:41

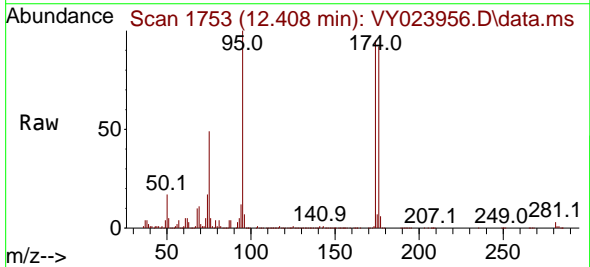
Instrument :  
 MSVOA\_Y  
 ClientSampleId :  
 SW-6



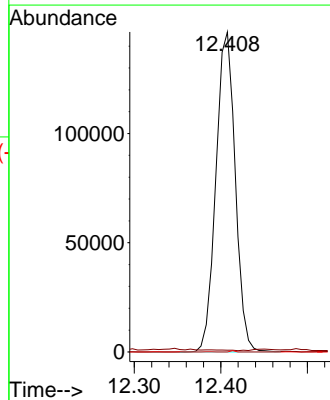
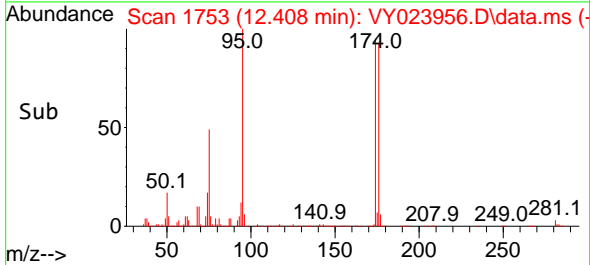
Tgt Ion:105 Resp: 462298  
 Ion Ratio Lower Upper  
 105 100  
 120 50.7 25.7 77.1

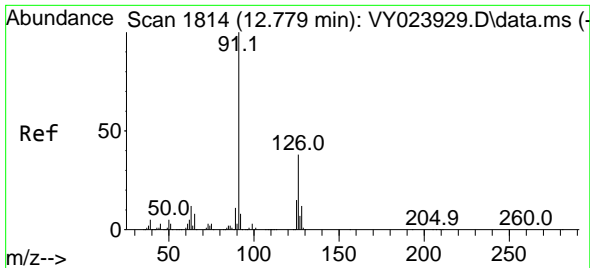


#81  
 trans-1,4-Dichloro-2-butene  
 Concen: 127.025 ug/l  
 RT: 12.408 min Scan# 1753  
 Delta R.T. 0.104 min  
 Lab File: VY023956.D  
 Acq: 11 Dec 2025 15:41



Tgt Ion: 75 Resp: 227064  
 Ion Ratio Lower Upper  
 75 100  
 53 0.0 73.4 110.0#  
 89 0.1 38.9 58.3#

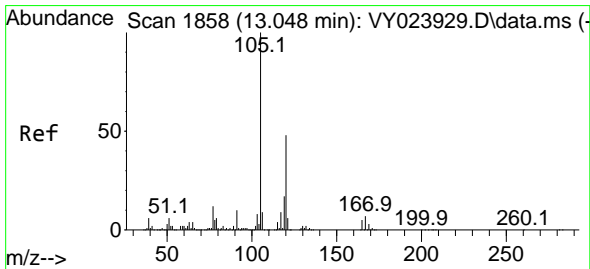
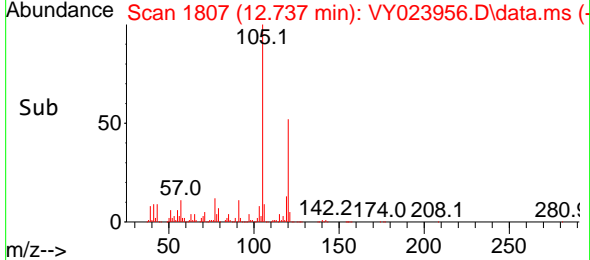
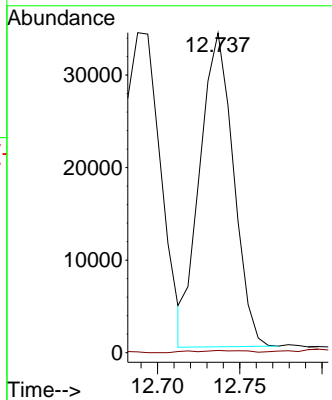
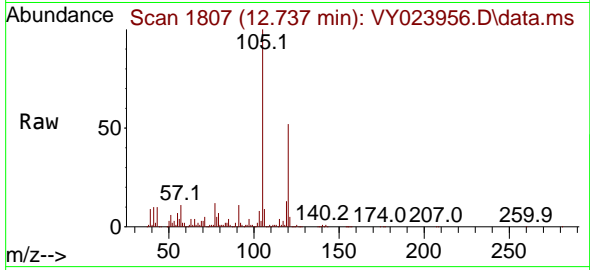




#82  
 4-Chlorotoluene  
 Concen: 2.012 ug/l  
 RT: 12.737 min Scan# 1814  
 Delta R.T. -0.043 min  
 Lab File: VY023956.D  
 Acq: 11 Dec 2025 15:41

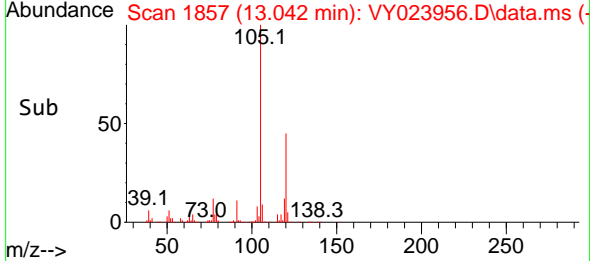
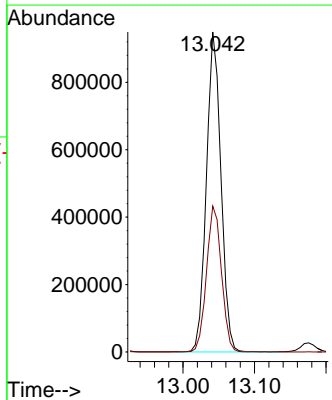
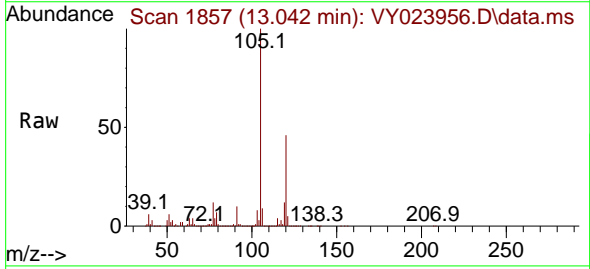
Instrument : MSVOA\_Y  
 ClientSampleId : SW-6

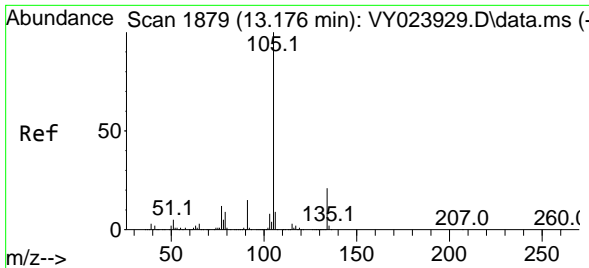
Tgt Ion: 91 Resp: 48126  
 Ion Ratio Lower Upper  
 91 100  
 126 1.1 18.1 54.1#



#84  
 1,2,4-Trimethylbenzene  
 Concen: 48.242 ug/l  
 RT: 13.042 min Scan# 1857  
 Delta R.T. -0.006 min  
 Lab File: VY023956.D  
 Acq: 11 Dec 2025 15:41

Tgt Ion: 105 Resp: 1340262  
 Ion Ratio Lower Upper  
 105 100  
 120 47.0 23.4 70.3

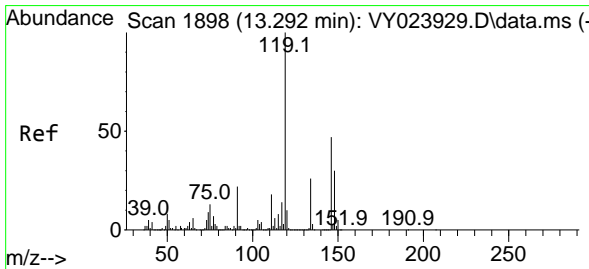
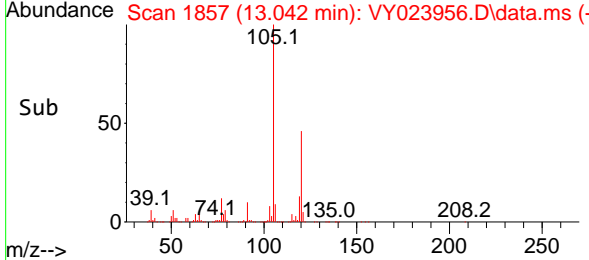
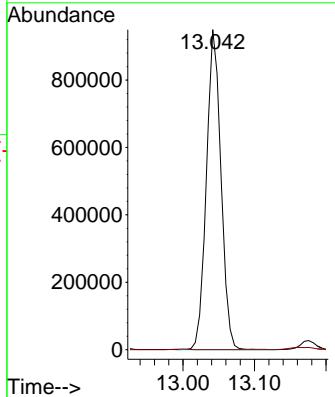
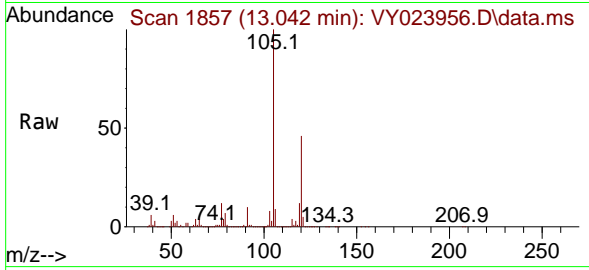




#85  
 sec-Butylbenzene  
 Concen: 35.457 ug/l  
 RT: 13.042 min Scan# 1857  
 Delta R.T. -0.134 min  
 Lab File: VY023956.D  
 Acq: 11 Dec 2025 15:41

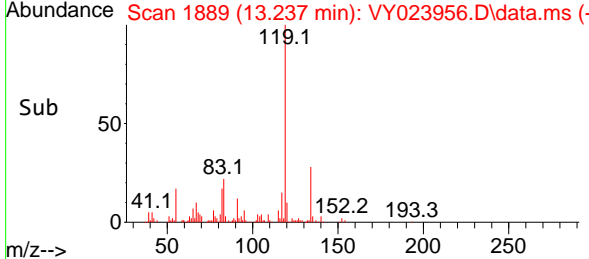
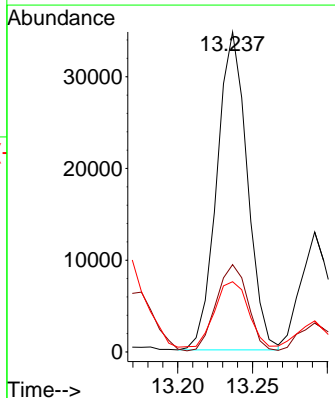
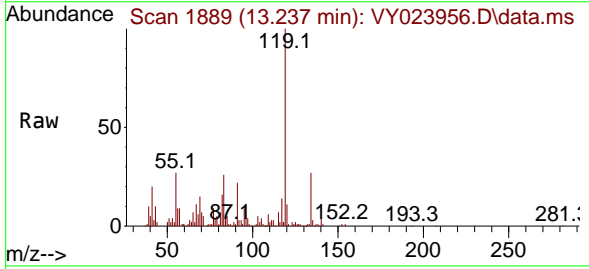
Instrument : MSVOA\_Y  
 ClientSampleId : SW-6

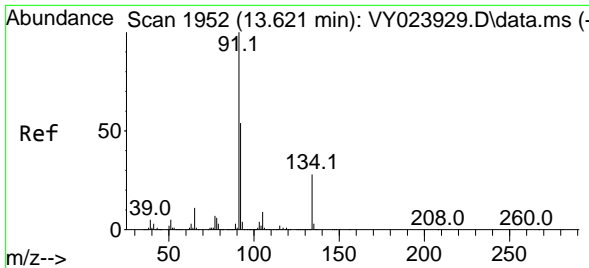
Tgt Ion:105 Resp: 1340262  
 Ion Ratio Lower Upper  
 105 100  
 134 0.0 10.6 31.8#



#86  
 p-Isopropyltoluene  
 Concen: 1.529 ug/l  
 RT: 13.237 min Scan# 1889  
 Delta R.T. -0.055 min  
 Lab File: VY023956.D  
 Acq: 11 Dec 2025 15:41

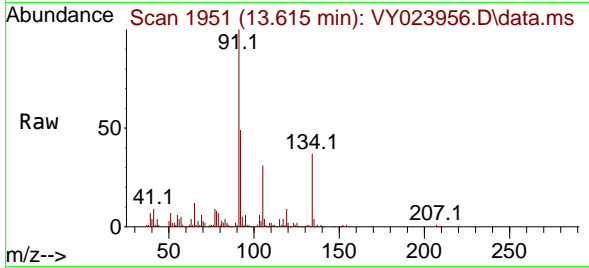
Tgt Ion:119 Resp: 48932  
 Ion Ratio Lower Upper  
 119 100  
 134 28.7 13.6 40.7  
 91 22.4 11.1 33.3





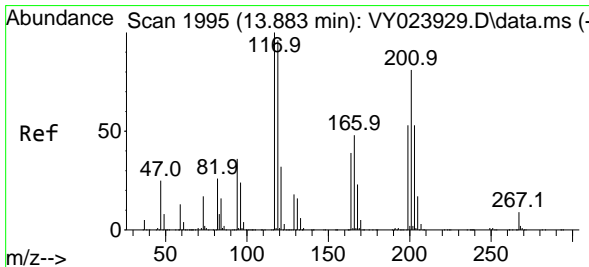
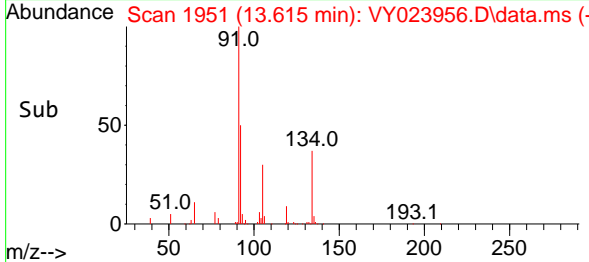
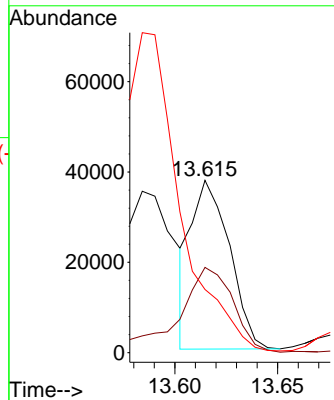
#89  
 n-Butylbenzene  
 Concen: 1.713 ug/l  
 RT: 13.615 min Scan# 1951  
 Delta R.T. -0.006 min  
 Lab File: VY023956.D  
 Acq: 11 Dec 2025 15:41

Instrument : MSVOA\_Y  
 ClientSampleId : SW-6



Tgt Ion: 91 Resp: 47957

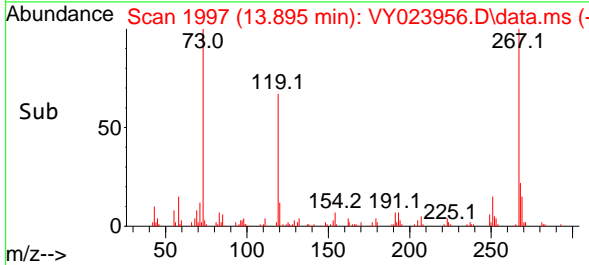
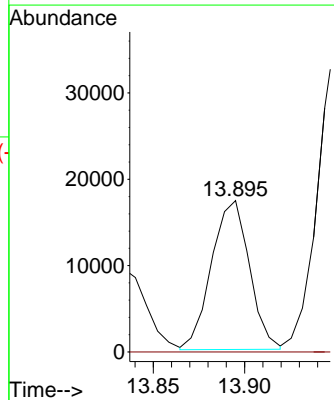
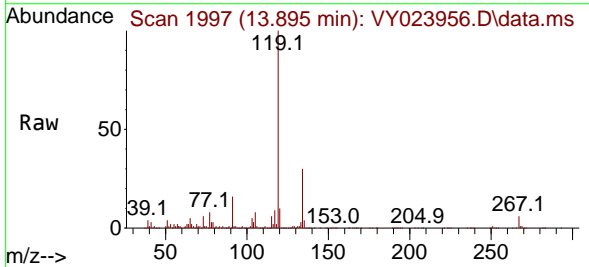
Ion	Ratio	Lower	Upper
91	100		
92	70.4	26.9	80.6
134	0.0	13.9	41.6#

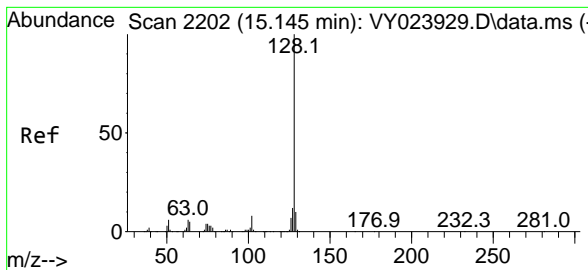


#90  
 Hexachloroethane  
 Concen: 3.814 ug/l  
 RT: 13.895 min Scan# 1997  
 Delta R.T. 0.012 min  
 Lab File: VY023956.D  
 Acq: 11 Dec 2025 15:41

Tgt Ion: 117 Resp: 24903

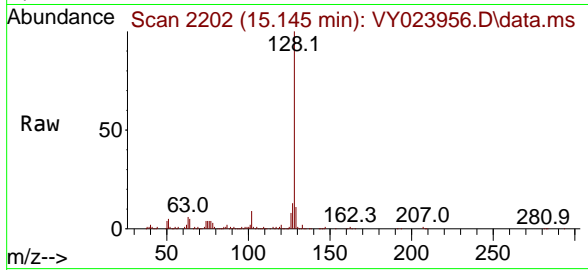
Ion	Ratio	Lower	Upper
117	100		
201	0.0	42.4	127.3#





#95  
 Naphthalene  
 Concen: 8.614 ug/l  
 RT: 15.145 min Scan# 21  
 Delta R.T. -0.000 min  
 Lab File: VY023956.D  
 Acq: 11 Dec 2025 15:41

Instrument :  
 MSVOA\_Y  
 ClientSampleId :  
 SW-6



Tgt Ion:128 Resp: 114894

Ion	Ratio	Lower	Upper
128	100		
127	13.4	10.2	15.2
129	10.7	8.6	12.8

