

Data Path : Z:\voasrv\HPCHEM1\MSVOA\_Y\Data\VY121125\  
 Data File : VY023958.D  
 Acq On : 11 Dec 2025 16:28  
 Operator : SY/MD  
 Sample : Q3834-29  
 Misc : 11.09g/5.0mL/MSVOA\_Y/SOIL  
 ALS Vial : 2 Sample Multiplier: 1

Instrument :  
 MSVOA\_Y  
 ClientSampleId :  
 B127(5.5-8)120925

Quant Time: Dec 12 03:25:57 2025  
 Quant Method : Z:\voasrv\HPCHEM1\MSVOA\_Y\methods\82Y121025S.M  
 Quant Title : SW846 8260  
 QLast Update : Thu Dec 11 03:57:51 2025  
 Response via : Initial Calibration

Compound	R.T.	QIon	Response	Conc	Units	Dev(Min)
Internal Standards						
1) Pentafluorobenzene	7.713	168	354418	50.000	ug/l	0.00
34) 1,4-Difluorobenzene	8.616	114	527728	50.000	ug/l	0.00
63) Chlorobenzene-d5	11.420	117	482887	50.000	ug/l	# 0.00
72) 1,4-Dichlorobenzene-d4	13.347	152	546103	50.000	ug/l	# 0.00
System Monitoring Compounds						
33) 1,2-Dichloroethane-d4	8.067	65	158576	50.605	ug/l	0.00
Spiked Amount	50.000	Range	50 - 163	Recovery	=	101.220%
35) Dibromofluoromethane	7.640	113	170416	49.400	ug/l	0.00
Spiked Amount	50.000	Range	54 - 147	Recovery	=	98.800%
50) Toluene-d8	10.109	98	1190747	92.711	ug/l	0.00
Spiked Amount	50.000	Range	58 - 134	Recovery	=	185.420%#
62) 4-Bromofluorobenzene	12.402	95	1190401	277.534	ug/l	0.00
Spiked Amount	50.000	Range	30 - 143	Recovery	=	555.060%#
Target Compounds						
						Qvalue
8) Diethyl Ether	3.464	74	13319	8.254	ug/l	99
10) Methyl Iodide	4.007	142	134	Below Cal	#	41
11) Tert butyl alcohol	4.854	59	183	1.009	ug/l	# 71
15) Acrylonitrile	5.141	53	2578	4.010	ug/l	# 40
16) Acetone	3.873	43	36143	13.891	ug/l	98
17) Carbon Disulfide	4.116	76	20358	2.384	ug/l	97
20) Methylene Chloride	4.629	84	11887	3.225	ug/l	87
22) Diisopropyl ether	6.031	45	23878	2.548	ug/l	# 90
23) Vinyl Acetate	6.025	43	14256	2.738	ug/l	# 68
25) 2-Butanone	6.903	43	21770	22.481	ug/l	# 78
31) Cyclohexane	7.793	56	912791	169.856	ug/l	# 13
36) 1,1-Dichloropropene	7.707	75	22743	4.843	ug/l	# 51
37) Ethyl Acetate	6.903	43	21770	11.383	ug/l	# 68
38) Carbon Tetrachloride	7.713	117	31897	5.603	ug/l	# 16
39) Methylcyclohexane	9.079	83	2873808	458.008	ug/l	# 32
40) Benzene	8.085	78	14618	1.022	ug/l	97
41) Methacrylonitrile	7.451	41	24824	23.595	ug/l	# 47
42) 1,2-Dichloroethane	8.201	62	6042	1.611	ug/l	# 1
43) Isopropyl Acetate	8.195	43	508932	141.298	ug/l	# 58
45) 1,2-Dichloropropane	9.177	63	7050	2.185	ug/l	# 1
47) Bromodichloromethane	9.396	83	424917	84.988	ug/l	# 42
48) Methyl methacrylate	9.250	41	126363	75.362	ug/l	# 10
51) 4-Methyl-2-Pentanone	10.006	43	181087	94.890	ug/l	# 34
52) Toluene	10.176	92	35576	3.759	ug/l	98
55) 1,1,2-Trichloroethane	10.548	97	9281661	3548.256	ug/l	# 20
56) Ethyl methacrylate	10.451	69	6188927	1995.745	ug/l	# 1
58) 2-Chloroethyl Vinyl ether	9.689	63	7034	5.237	ug/l	# 43
59) 2-Hexanone	10.737	43	12310165	8499.277	ug/l	# 27
60) Dibromochloromethane	10.841	129	36942	10.200	ug/l	64
61) 1,2-Dibromoethane	11.024	107	11842	4.885	ug/l	# 1
65) Chlorobenzene	11.554	112	355335	31.757	ug/l	# 43
67) Ethyl Benzene	11.511	91	49808	2.657	ug/l	# 48
68) m/p-Xylenes	11.627	106	13645	1.833	ug/l	# 1
69) o-Xylene	11.957	106	13839	1.988	ug/l	# 1
73) Isopropylbenzene	12.255	105	1547926	38.785	ug/l	99
74) N-amyl acetate	12.054	43	6769346	956.239	ug/l	# 58

Data Path : Z:\voasrv\HPCHEM1\MSVOA\_Y\Data\VY121125\  
 Data File : VY023958.D  
 Acq On : 11 Dec 2025 16:28  
 Operator : SY/MD  
 Sample : Q3834-29  
 Misc : 11.09g/5.0mL/MSVOA\_Y/SOIL  
 ALS Vial : 2 Sample Multiplier: 1

Instrument :  
 MSVOA\_Y  
 ClientSampleId :  
 B127(5.5-8)120925

Quant Time: Dec 12 03:25:57 2025  
 Quant Method : Z:\voasrv\HPCHEM1\MSVOA\_Y\methods\82Y121025S.M  
 Quant Title : SW846 8260  
 QLast Update : Thu Dec 11 03:57:51 2025  
 Response via : Initial Calibration

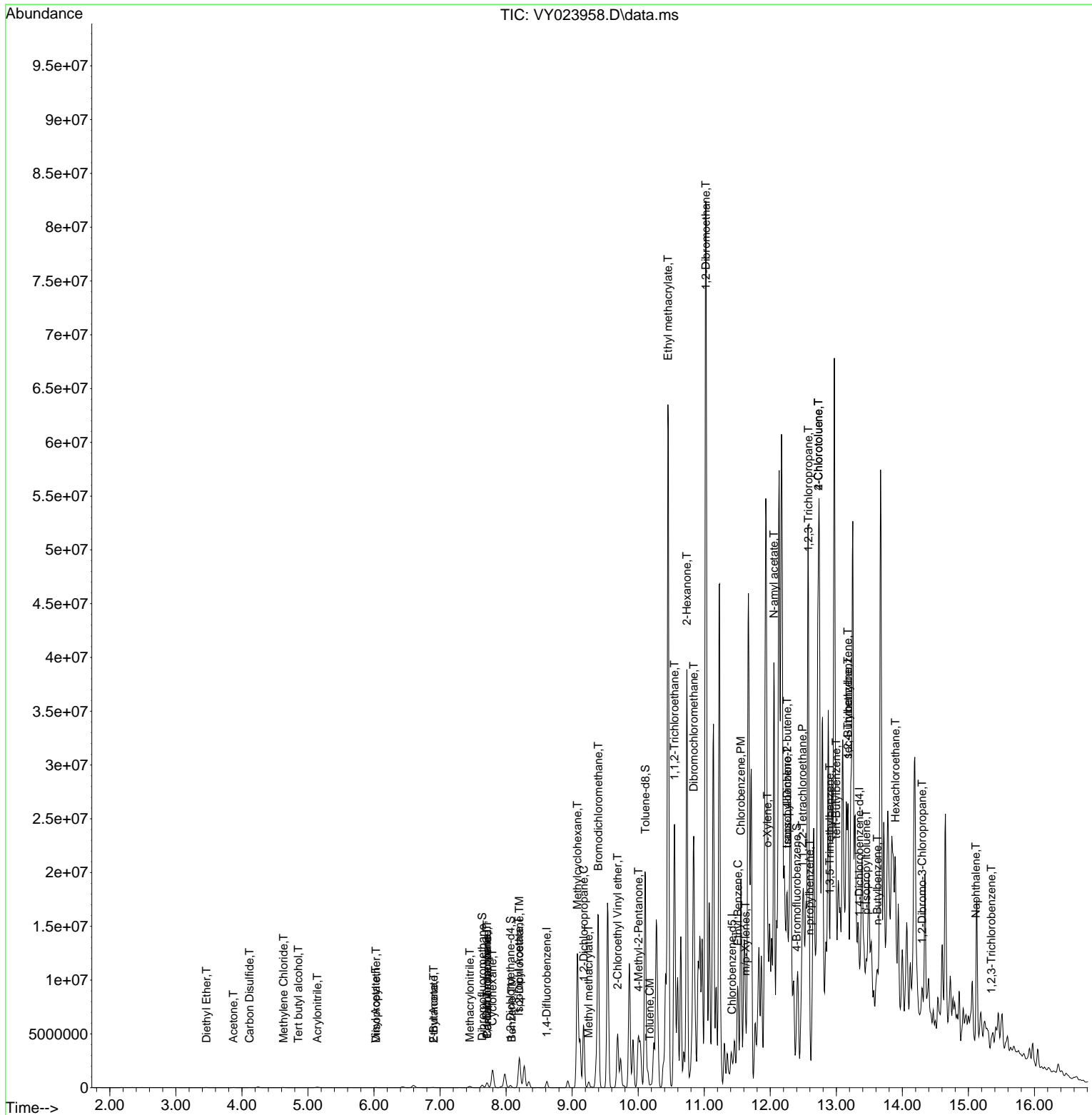
Compound	R.T.	QIon	Response	Conc	Units	Dev(Min)
75) 1,1,2,2-Tetrachloroethane	12.487	83	1000221	164.592	ug/l #	65
76) 1,2,3-Trichloropropane	12.578	75	13002	2.815	ug/l #	100
78) n-propylbenzene	12.597	91	1200016	25.843	ug/l	90
79) 2-Chlorotoluene	12.731	91	324216	12.292	ug/l	70
80) 1,3,5-Trimethylbenzene	12.901	105	53136	1.669	ug/l	69
81) trans-1,4-Dichloro-2-b...	12.255	75	16552	8.156	ug/l #	1
82) 4-Chlorotoluene	12.731	91	336153	12.380	ug/l	73
83) tert-Butylbenzene	12.999	119	281356	9.564	ug/l #	53
84) 1,2,4-Trimethylbenzene	13.176	105	2432294	77.115	ug/l #	30
85) sec-Butylbenzene	13.176	105	2432294	56.679	ug/l #	69
86) p-Isopropyltoluene	13.450	119	709876	19.543	ug/l	93
89) n-Butylbenzene	13.621	91	566641	17.830	ug/l #	87
90) Hexachloroethane	13.895	117	137024	18.486	ug/l #	7
92) 1,2-Dibromo-3-Chloropr...	14.298	75	8518	9.053	ug/l #	1
95) Naphthalene	15.114	128	35962	2.375	ug/l #	1
96) 1,2,3-Trichlorobenzene	15.346	180	22237	2.668	ug/l #	12

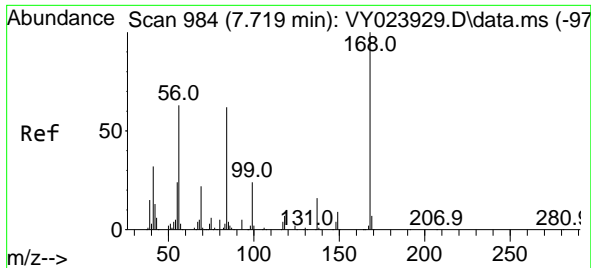
(#) = qualifier out of range (m) = manual integration (+) = signals summed

Data Path : Z:\voasrv\HPCHEM1\MSVOA\_Y\Data\VY121125\  
 Data File : VY023958.D  
 Acq On : 11 Dec 2025 16:28  
 Operator : SY/MD  
 Sample : Q3834-29  
 Misc : 11.09g/5.0mL/MSVOA\_Y/SOIL  
 ALS Vial : 2 Sample Multiplier: 1

Instrument :  
 MSVOA\_Y  
 ClientSampleId :  
 B127(5.5-8)120925

Quant Time: Dec 12 03:25:57 2025  
 Quant Method : Z:\voasrv\HPCHEM1\MSVOA\_Y\methods\82Y121025S.M  
 Quant Title : SW846 8260  
 QLast Update : Thu Dec 11 03:57:51 2025  
 Response via : Initial Calibration

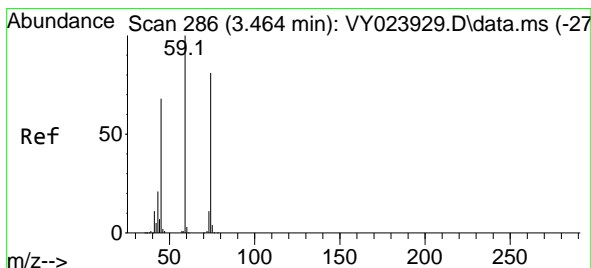
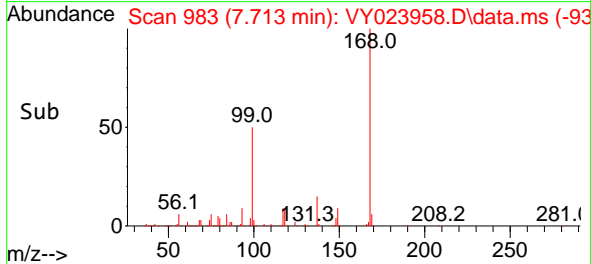
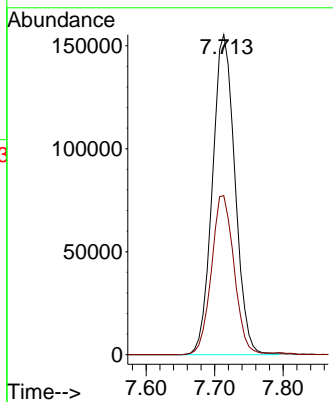
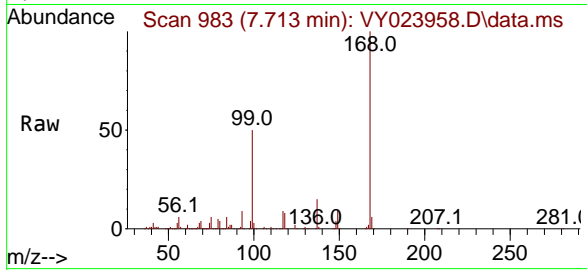




#1  
 Pentafluorobenzene  
 Concen: 50.000 ug/l  
 RT: 7.713 min Scan# 91  
 Delta R.T. -0.006 min  
 Lab File: VY023958.D  
 Acq: 11 Dec 2025 16:28

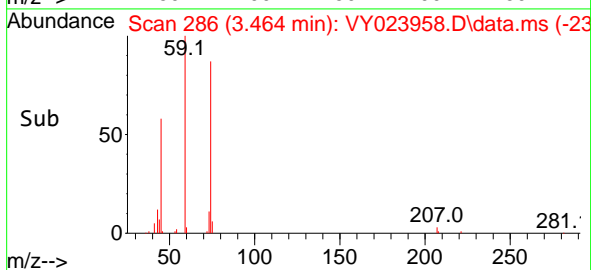
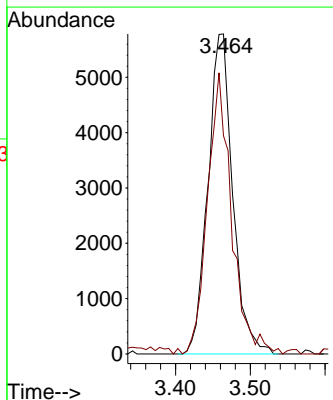
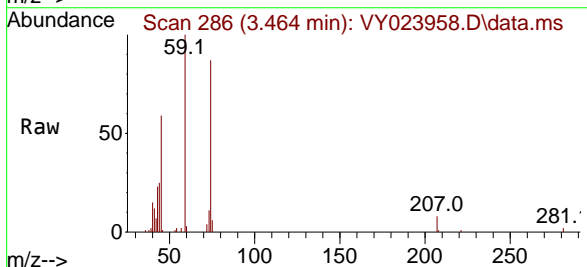
Instrument : MSVOA\_Y  
 ClientSampleId : B127(5.5-8)120925

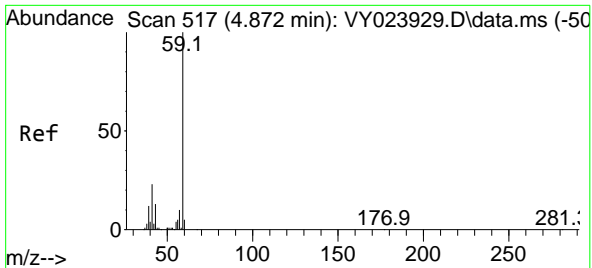
Tgt Ion:168 Resp: 354418  
 Ion Ratio Lower Upper  
 168 100  
 99 49.7 38.9 58.3



#8  
 Diethyl Ether  
 Concen: 8.254 ug/l  
 RT: 3.464 min Scan# 286  
 Delta R.T. 0.000 min  
 Lab File: VY023958.D  
 Acq: 11 Dec 2025 16:28

Tgt Ion: 74 Resp: 13319  
 Ion Ratio Lower Upper  
 74 100  
 45 85.0 42.0 126.1

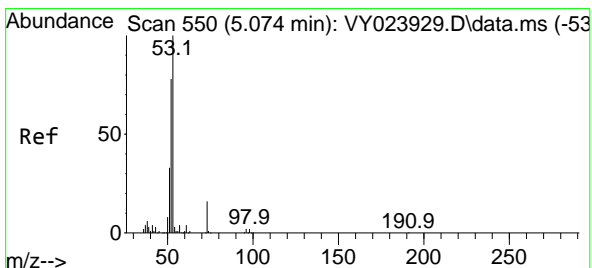
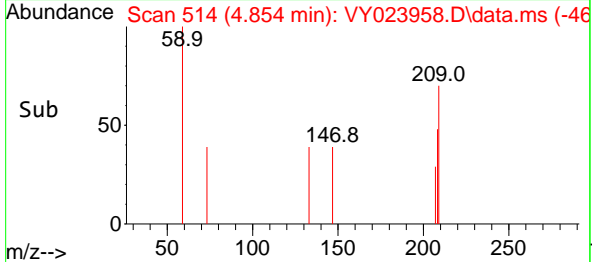
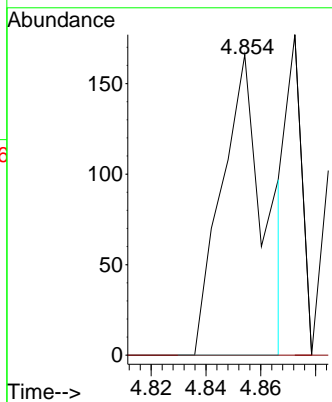
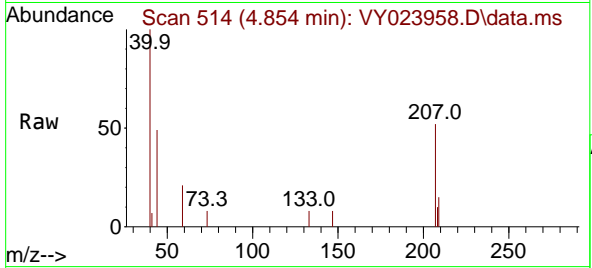




#11  
 Tert butyl alcohol  
 Concen: 1.009 ug/l  
 RT: 4.854 min Scan# 511  
 Delta R.T. -0.018 min  
 Lab File: VY023958.D  
 Acq: 11 Dec 2025 16:28

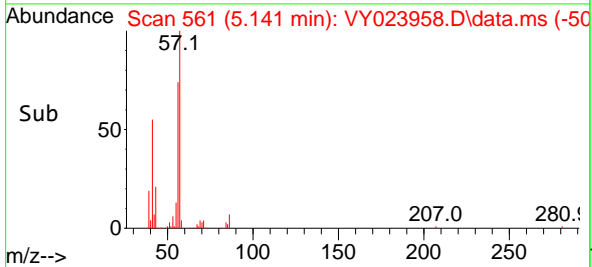
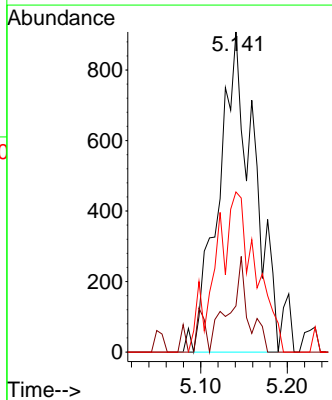
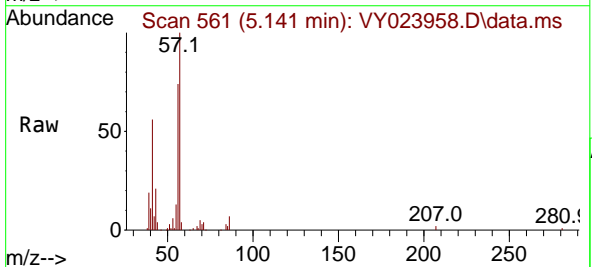
Instrument : MSVOA\_Y  
 ClientSampleId : B127(5.5-8)120925

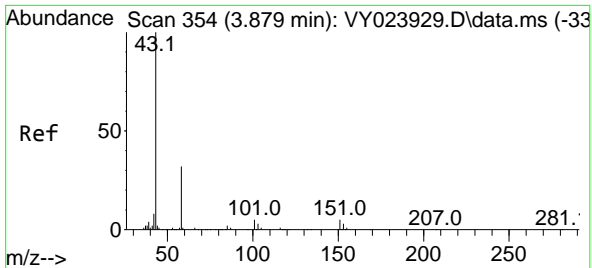
Tgt Ion: 59 Resp: 183  
 Ion Ratio Lower Upper  
 59 100  
 57 0.0 8.7 13.1#



#15  
 Acrylonitrile  
 Concen: 4.010 ug/l  
 RT: 5.141 min Scan# 561  
 Delta R.T. 0.067 min  
 Lab File: VY023958.D  
 Acq: 11 Dec 2025 16:28

Tgt Ion: 53 Resp: 2578  
 Ion Ratio Lower Upper  
 53 100  
 52 16.2 64.2 96.2#  
 51 55.9 29.3 43.9#

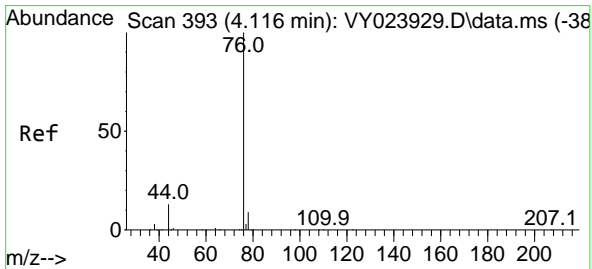
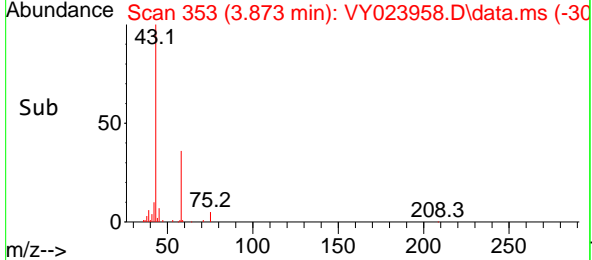
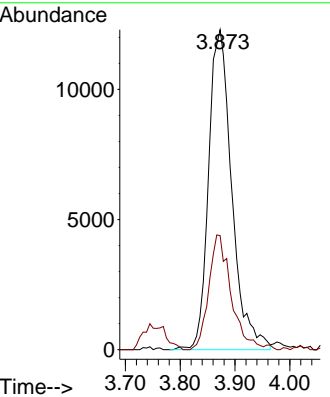
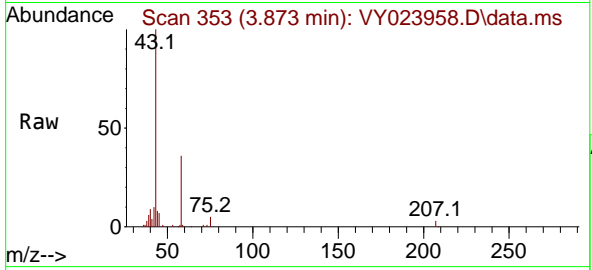




#16  
 Acetone  
 Concen: 13.891 ug/l  
 RT: 3.873 min Scan# 311  
 Delta R.T. -0.006 min  
 Lab File: VY023958.D  
 Acq: 11 Dec 2025 16:28

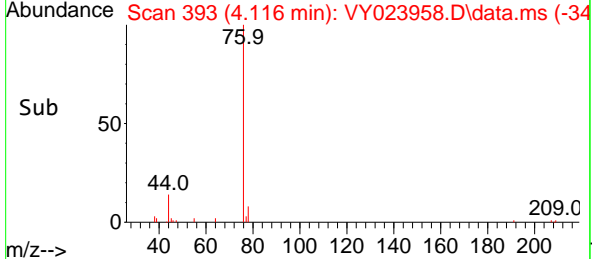
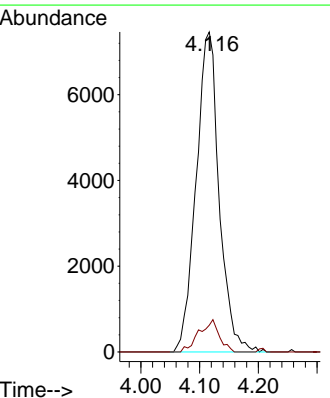
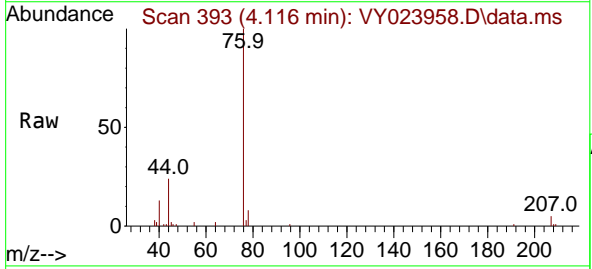
Instrument : MSVOA\_Y  
 ClientSampleId : B127(5.5-8)120925

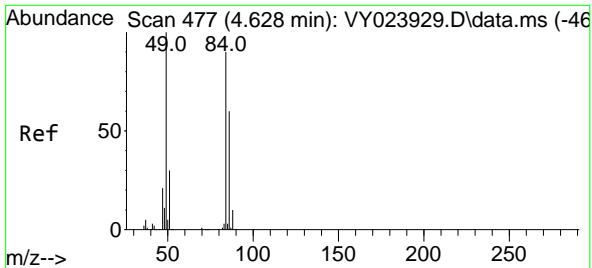
Tgt Ion: 43 Resp: 36143  
 Ion Ratio Lower Upper  
 43 100  
 58 34.2 26.4 39.6



#17  
 Carbon Disulfide  
 Concen: 2.384 ug/l  
 RT: 4.116 min Scan# 393  
 Delta R.T. 0.000 min  
 Lab File: VY023958.D  
 Acq: 11 Dec 2025 16:28

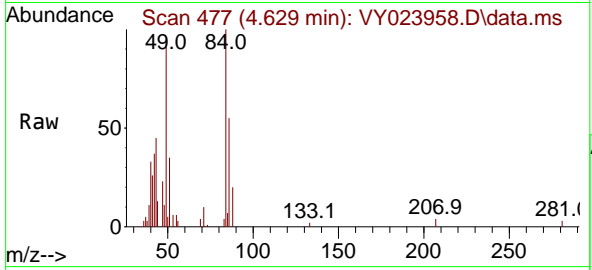
Tgt Ion: 76 Resp: 20358  
 Ion Ratio Lower Upper  
 76 100  
 78 8.3 7.4 11.2





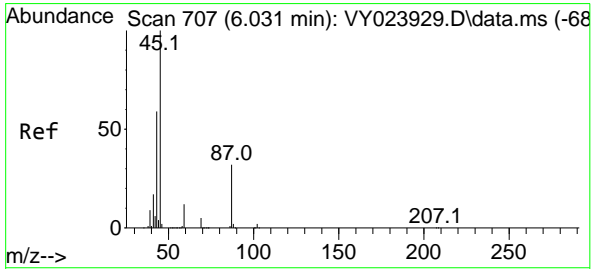
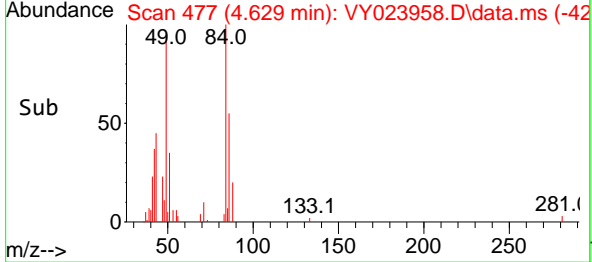
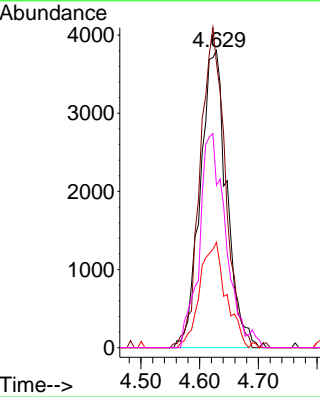
#20  
 Methylene Chloride  
 Concen: 3.225 ug/l  
 RT: 4.629 min Scan# 41  
 Delta R.T. 0.000 min  
 Lab File: VY023958.D  
 Acq: 11 Dec 2025 16:28

Instrument : MSVOA\_Y  
 ClientSampleId : B127(5.5-8)120925

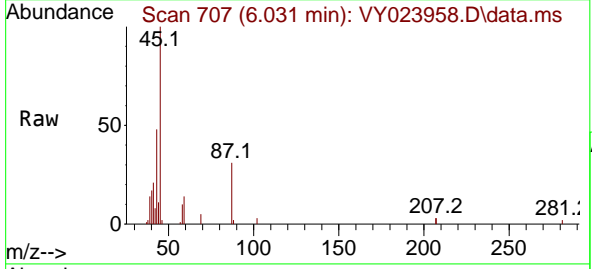


Tgt Ion: 84 Resp: 11887

Ion	Ratio	Lower	Upper
84	100		
49	95.8	89.1	133.7
51	35.5	26.6	39.8
86	54.6	53.4	80.0

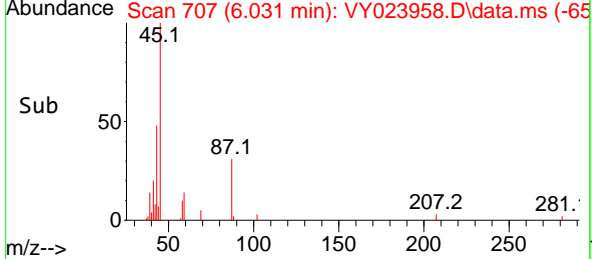
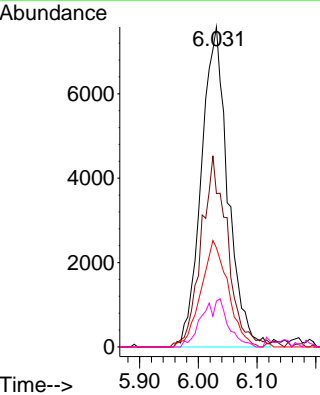


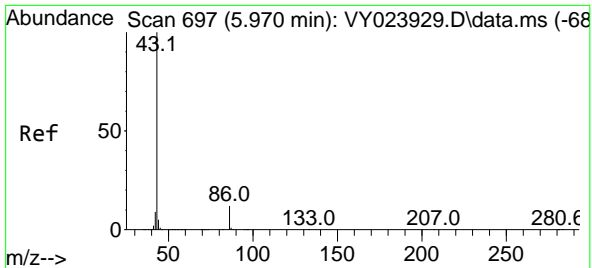
#22  
 Diisopropyl ether  
 Concen: 2.548 ug/l  
 RT: 6.031 min Scan# 707  
 Delta R.T. 0.000 min  
 Lab File: VY023958.D  
 Acq: 11 Dec 2025 16:28



Tgt Ion: 45 Resp: 23878

Ion	Ratio	Lower	Upper
45	100		
43	47.9	47.0	70.6
87	31.0	26.0	39.0
59	14.3	9.4	14.2

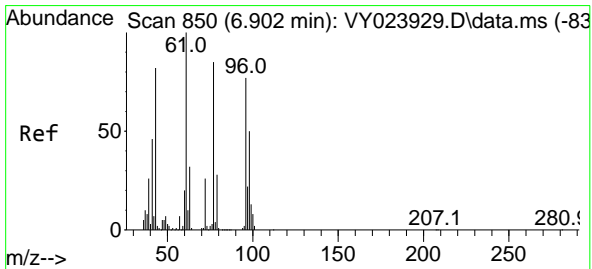
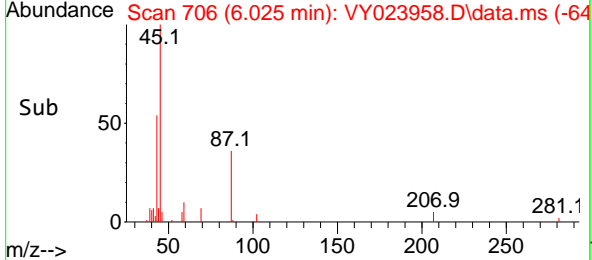
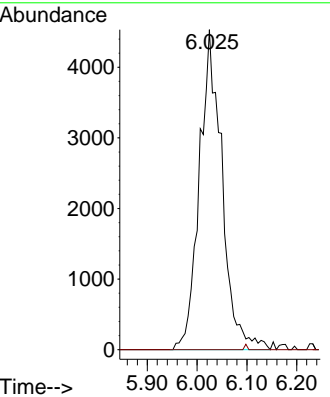
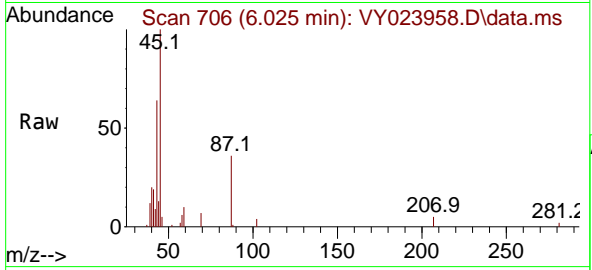




#23  
 Vinyl Acetate  
 Concen: 2.738 ug/l  
 RT: 6.025 min Scan# 706  
 Delta R.T. 0.055 min  
 Lab File: VY023958.D  
 Acq: 11 Dec 2025 16:28

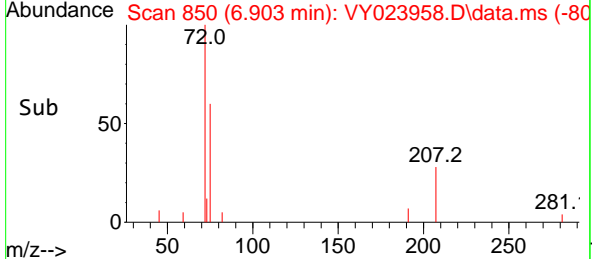
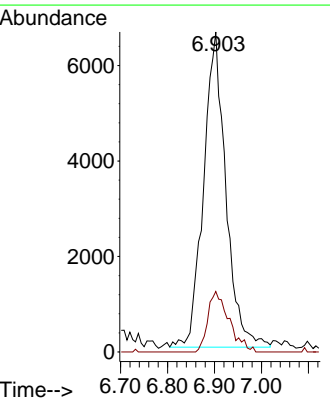
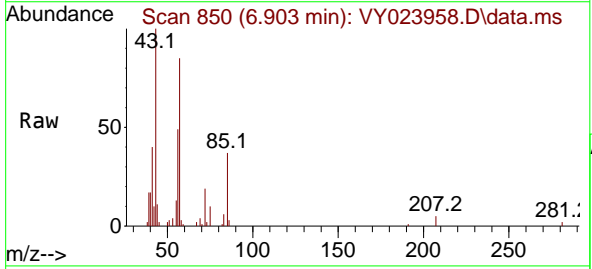
Instrument : MSVOA\_Y  
 ClientSampleId : B127(5.5-8)120925

Tgt Ion: 43 Resp: 14256  
 Ion Ratio Lower Upper  
 43 100  
 86 0.0 9.9 14.9#

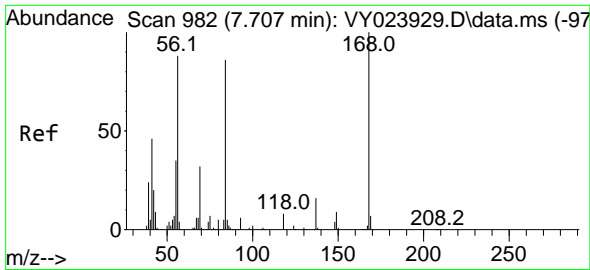


#25  
 2-Butanone  
 Concen: 22.481 ug/l  
 RT: 6.903 min Scan# 850  
 Delta R.T. 0.000 min  
 Lab File: VY023958.D  
 Acq: 11 Dec 2025 16:28

Tgt Ion: 43 Resp: 21770  
 Ion Ratio Lower Upper  
 43 100  
 72 19.2 25.0 37.6#



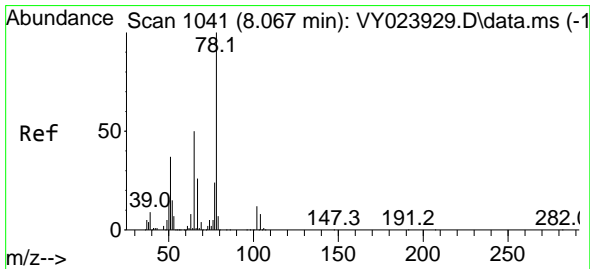
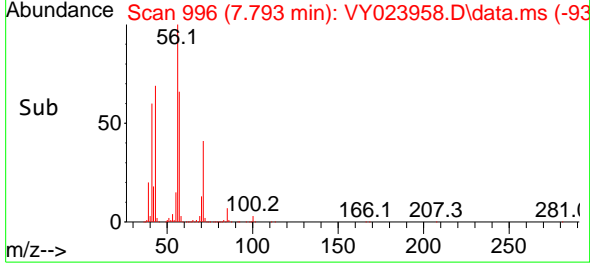
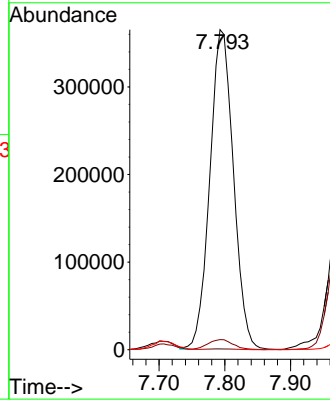
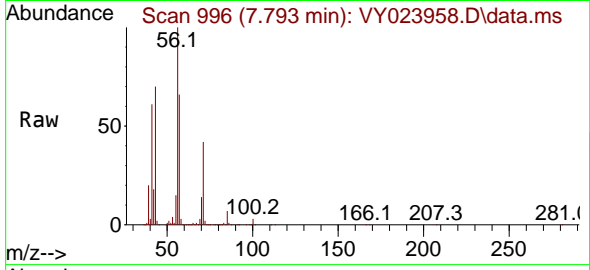




#31  
 Cyclohexane  
 Concen: 169.856 ug/l  
 RT: 7.793 min Scan# 91  
 Delta R.T. 0.085 min  
 Lab File: VY023958.D  
 Acq: 11 Dec 2025 16:28

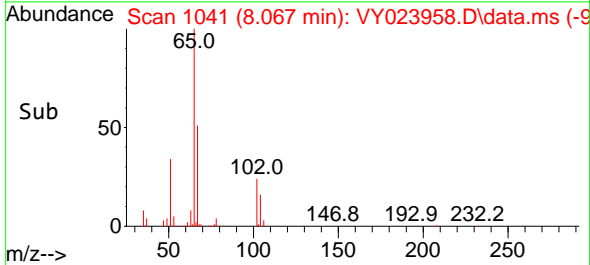
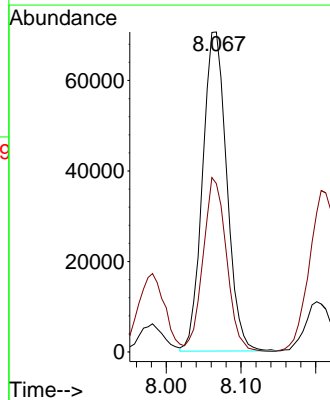
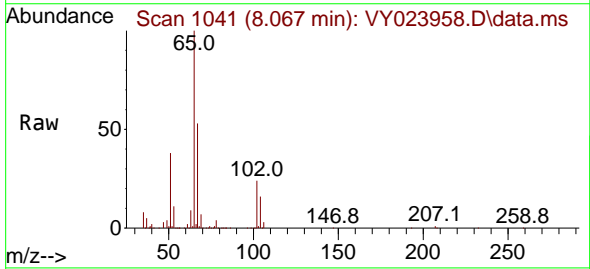
Instrument :  
 MSVOA\_Y  
 ClientSampleId :  
 B127(5.5-8)120925

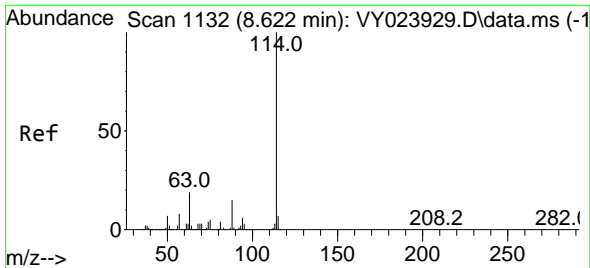
Tgt Ion: 56 Resp: 912791  
 Ion Ratio Lower Upper  
 56 100  
 69 3.1 29.1 43.7#  
 84 0.3 77.8 116.8#



#33  
 1,2-Dichloroethane-d4  
 Concen: 50.605 ug/l  
 RT: 8.067 min Scan# 1041  
 Delta R.T. 0.000 min  
 Lab File: VY023958.D  
 Acq: 11 Dec 2025 16:28

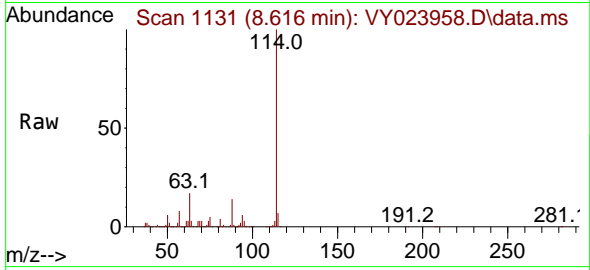
Tgt Ion: 65 Resp: 158576  
 Ion Ratio Lower Upper  
 65 100  
 67 52.5 0.0 106.2





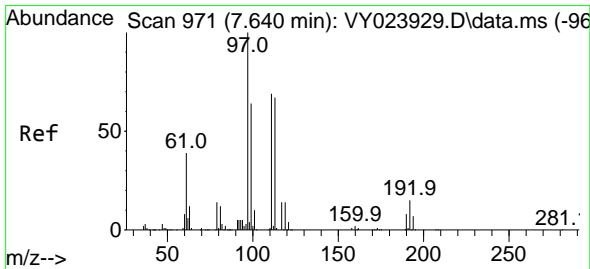
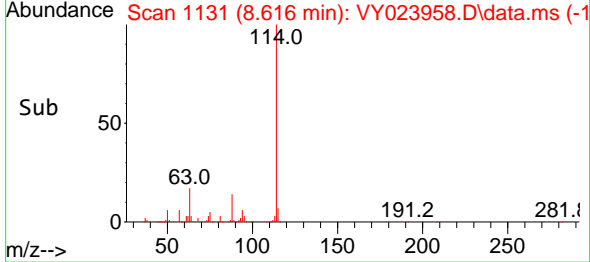
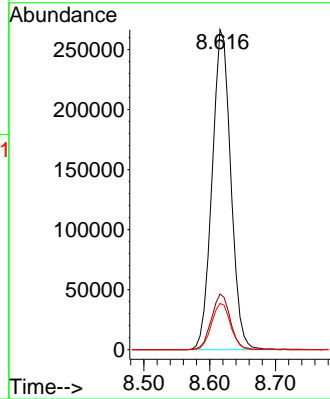
#34  
 1,4-Difluorobenzene  
 Concen: 50.000 ug/l  
 RT: 8.616 min Scan# 1131  
 Delta R.T. -0.006 min  
 Lab File: VY023958.D  
 Acq: 11 Dec 2025 16:28

Instrument : MSVOA\_Y  
 ClientSampleId : B127(5.5-8)120925



Tgt Ion:114 Resp: 527728

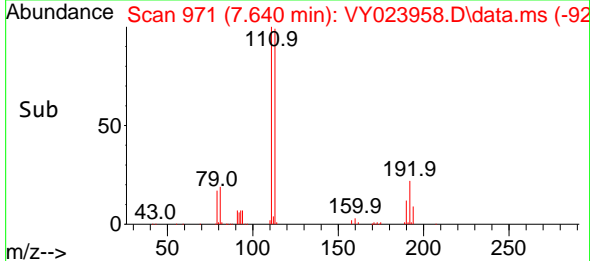
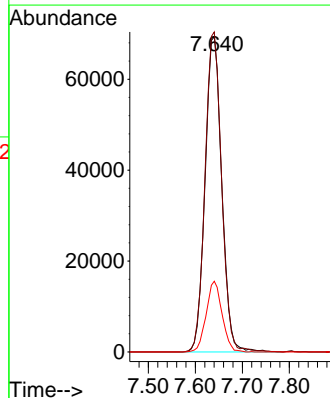
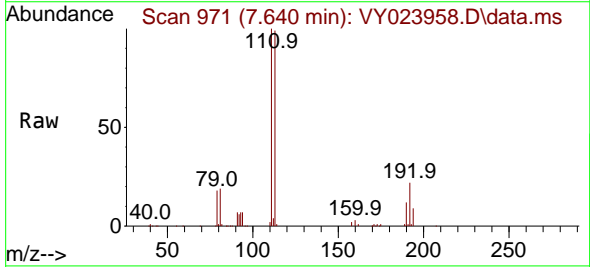
Ion	Ratio	Lower	Upper
114	100		
63	17.4	0.0	37.2
88	14.4	0.0	29.4

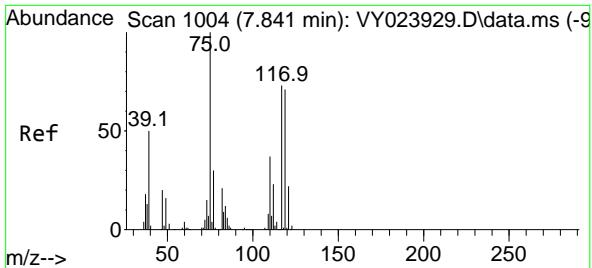


#35  
 Dibromofluoromethane  
 Concen: 49.400 ug/l  
 RT: 7.640 min Scan# 971  
 Delta R.T. 0.000 min  
 Lab File: VY023958.D  
 Acq: 11 Dec 2025 16:28

Tgt Ion:113 Resp: 170416

Ion	Ratio	Lower	Upper
113	100		
111	100.9	82.4	123.6
192	21.4	17.9	26.9

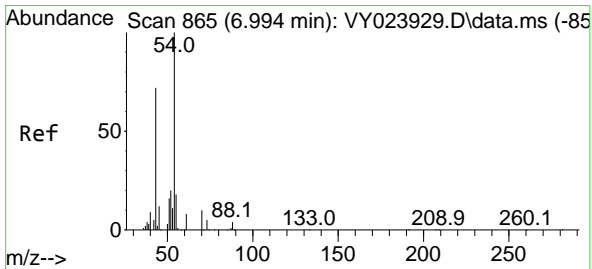
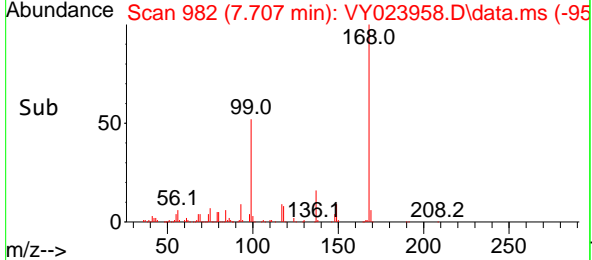
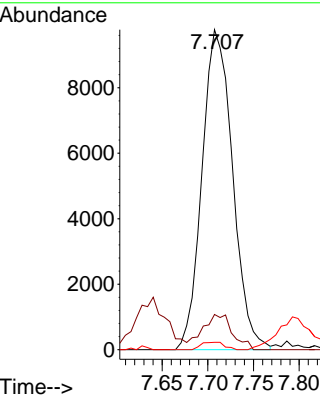
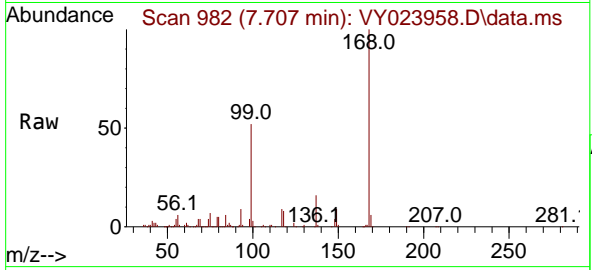




#36  
 1,1-Dichloropropene  
 Concen: 4.843 ug/l  
 RT: 7.707 min Scan# 91  
 Delta R.T. -0.134 min  
 Lab File: VY023958.D  
 Acq: 11 Dec 2025 16:28

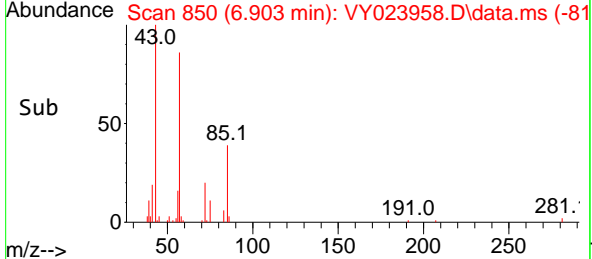
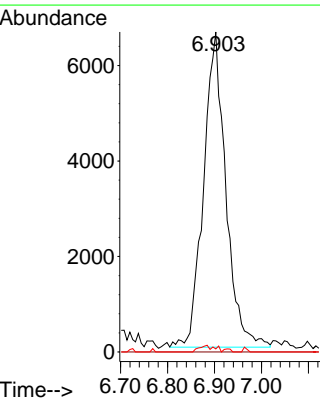
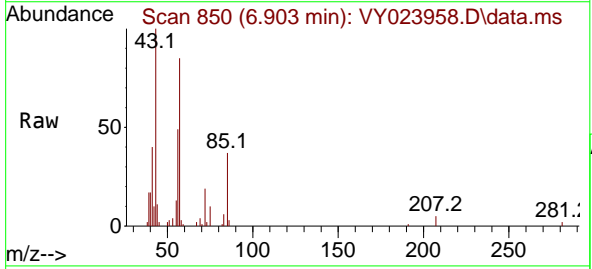
Instrument : MSVOA\_Y  
 ClientSampleId : B127(5.5-8)120925

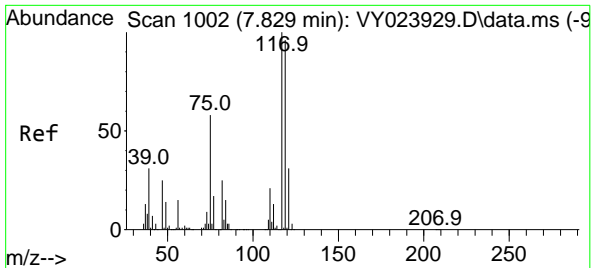
Tgt Ion	Resp	Lower	Upper
75	22743		
110	10.7	19.2	57.6#
77	1.8	24.4	36.6#



#37  
 Ethyl Acetate  
 Concen: 11.383 ug/l  
 RT: 6.903 min Scan# 850  
 Delta R.T. -0.091 min  
 Lab File: VY023958.D  
 Acq: 11 Dec 2025 16:28

Tgt Ion	Resp	Lower	Upper
43	21770		
61	0.0	11.9	17.9#
70	0.9	9.2	13.8#



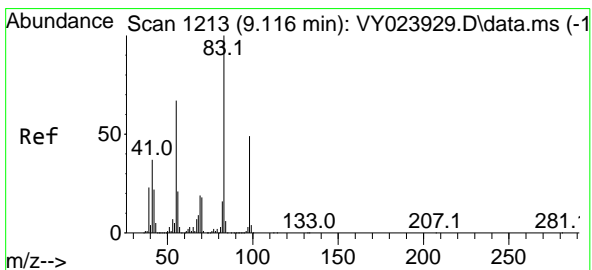
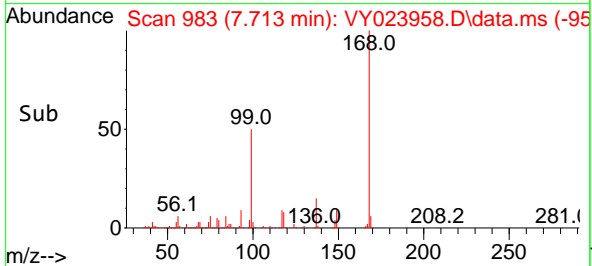
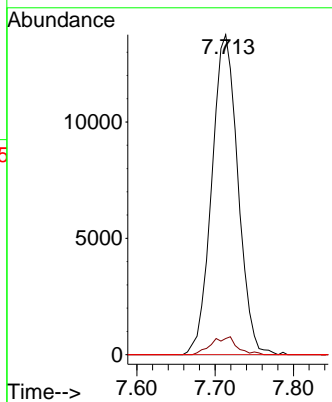
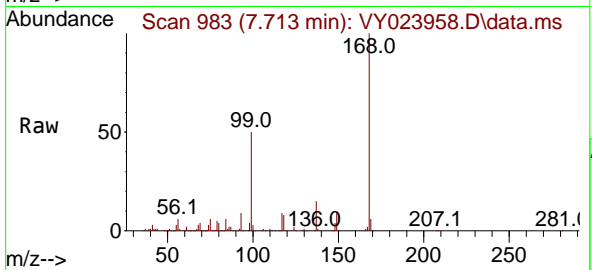


#38  
 Carbon Tetrachloride  
 Concen: 5.603 ug/l  
 RT: 7.713 min Scan# 91  
 Delta R.T. -0.116 min  
 Lab File: VY023958.D  
 Acq: 11 Dec 2025 16:28

Instrument : MSVOA\_Y  
 ClientSampleId : B127(5.5-8)120925

Tgt Ion:117 Resp: 31897

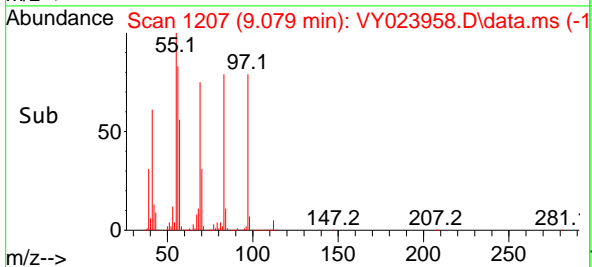
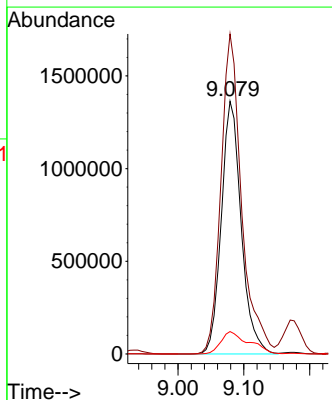
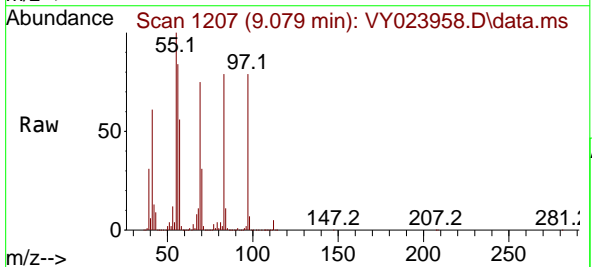
Ion	Ratio	Lower	Upper
117	100		
119	5.1	76.6	114.8#
121	0.0	24.8	37.2#

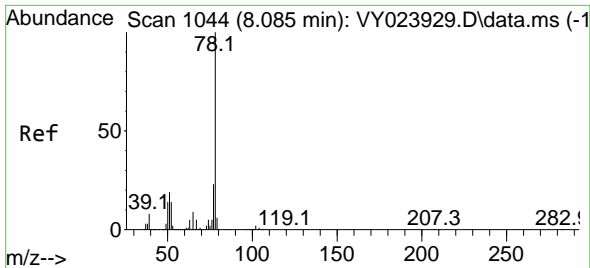


#39  
 Methylcyclohexane  
 Concen: 458.008 ug/l  
 RT: 9.079 min Scan# 1207  
 Delta R.T. -0.037 min  
 Lab File: VY023958.D  
 Acq: 11 Dec 2025 16:28

Tgt Ion: 83 Resp: 2873808

Ion	Ratio	Lower	Upper
83	100		
55	126.6	53.4	80.0#
98	8.9	39.2	58.8#

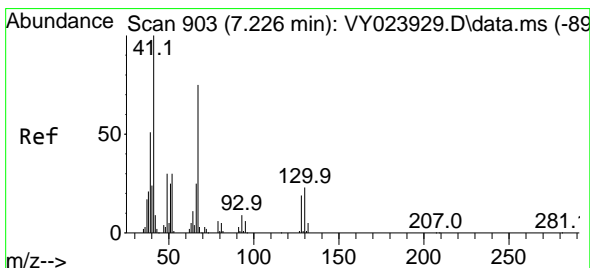
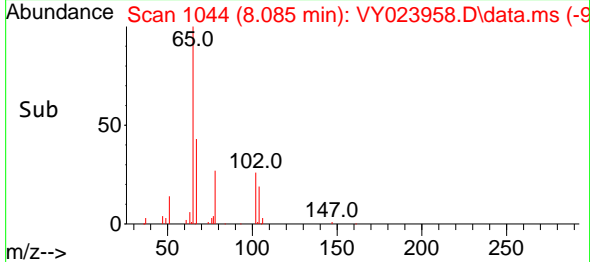
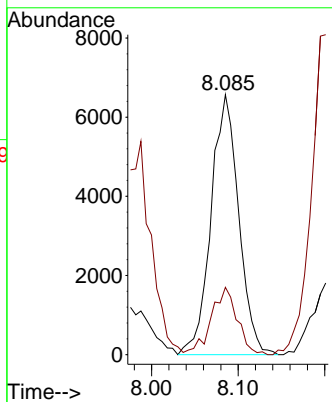
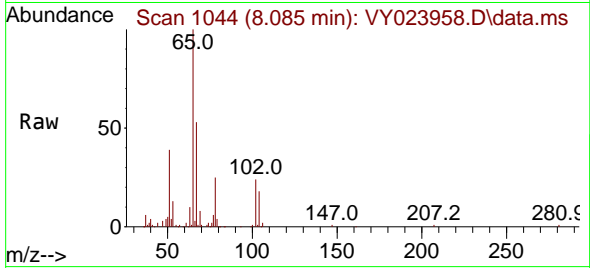




#40  
Benzene  
Concen: 1.022 ug/l  
RT: 8.085 min Scan# 1044  
Delta R.T. 0.000 min  
Lab File: VY023958.D  
Acq: 11 Dec 2025 16:28

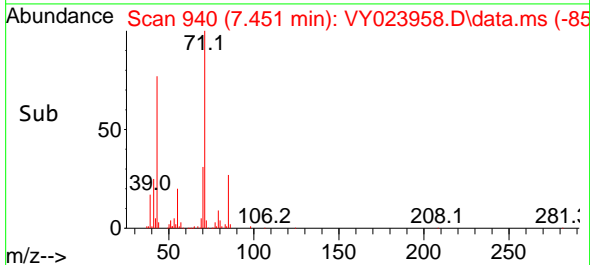
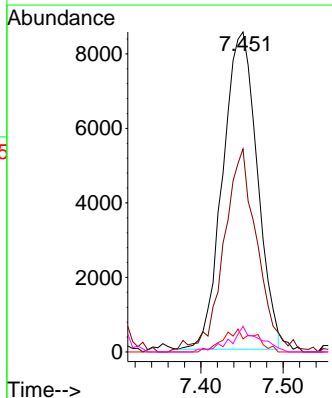
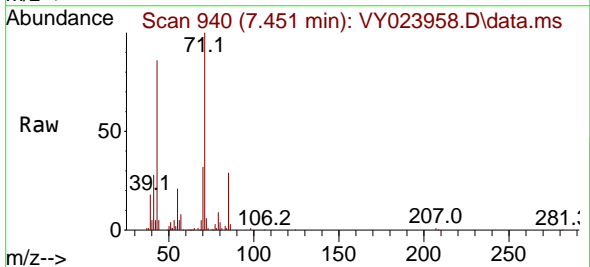
Instrument : MSVOA\_Y  
ClientSampleId : B127(5.5-8)120925

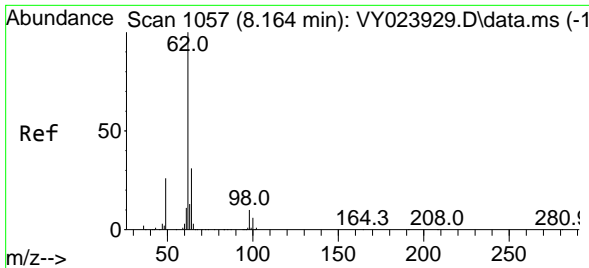
Tgt Ion: 78 Resp: 14618  
Ion Ratio Lower Upper  
78 100  
77 24.1 18.3 27.5



#41  
Methacrylonitrile  
Concen: 23.595 ug/l  
RT: 7.451 min Scan# 940  
Delta R.T. 0.226 min  
Lab File: VY023958.D  
Acq: 11 Dec 2025 16:28

Tgt Ion: 41 Resp: 24824  
Ion Ratio Lower Upper  
41 100  
39 55.0 50.6 75.8  
67 6.8 68.0 102.0#  
52 6.7 27.0 40.6#

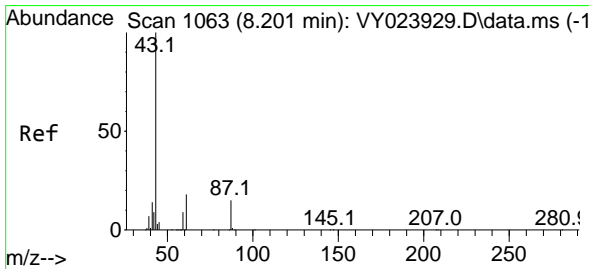
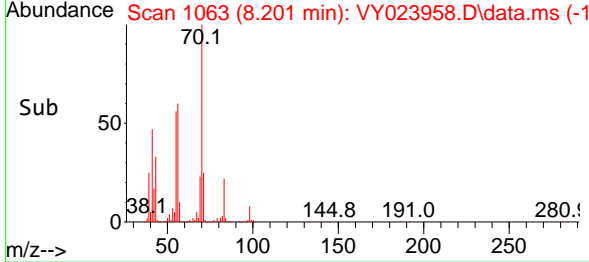
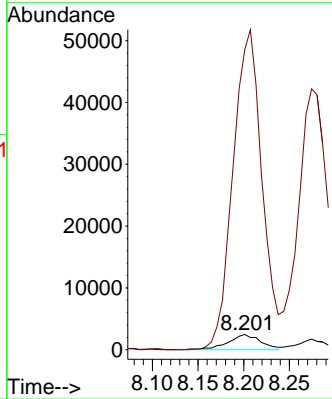
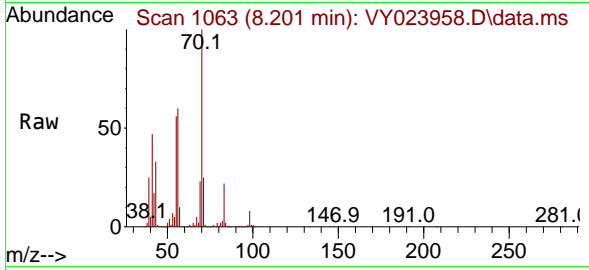




#42  
 1,2-Dichloroethane  
 Concen: 1.611 ug/l  
 RT: 8.201 min Scan# 1063  
 Delta R.T. 0.037 min  
 Lab File: VY023958.D  
 Acq: 11 Dec 2025 16:28

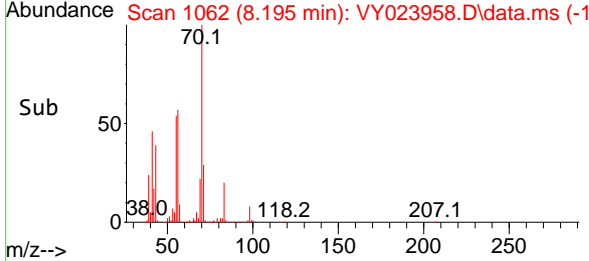
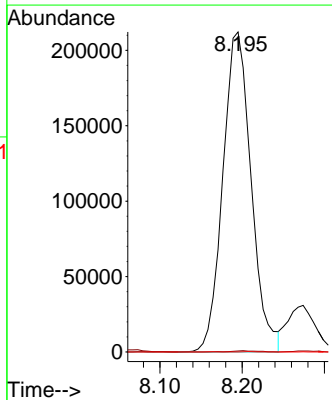
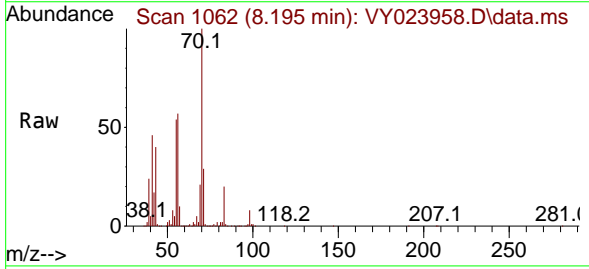
Instrument : MSVOA\_Y  
 ClientSampleId : B127(5.5-8)120925

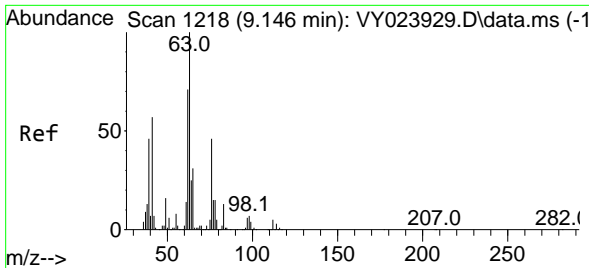
Tgt Ion: 62 Resp: 6042  
 Ion Ratio Lower Upper  
 62 100  
 98 1885.2 0.0 20.8#



#43  
 Isopropyl Acetate  
 Concen: 141.298 ug/l  
 RT: 8.195 min Scan# 1062  
 Delta R.T. -0.006 min  
 Lab File: VY023958.D  
 Acq: 11 Dec 2025 16:28

Tgt Ion: 43 Resp: 508932  
 Ion Ratio Lower Upper  
 43 100  
 61 0.3 17.4 26.2#  
 87 0.0 12.3 18.5#

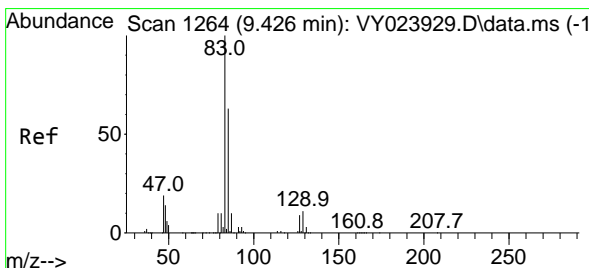
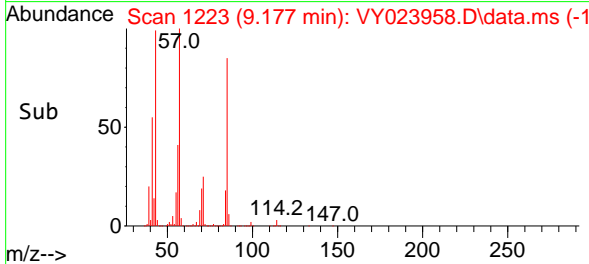
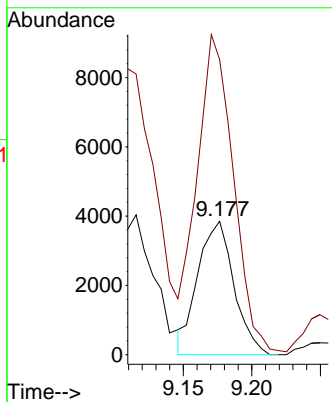
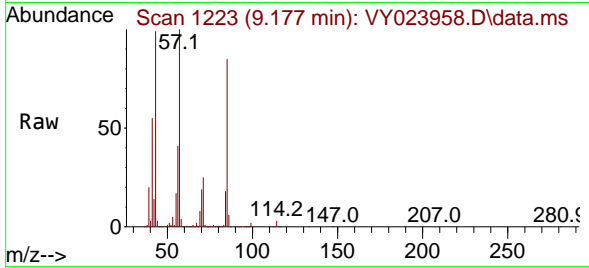




#45  
 1,2-Dichloropropane  
 Concen: 2.185 ug/l  
 RT: 9.177 min Scan# 11  
 Delta R.T. 0.031 min  
 Lab File: VY023958.D  
 Acq: 11 Dec 2025 16:28

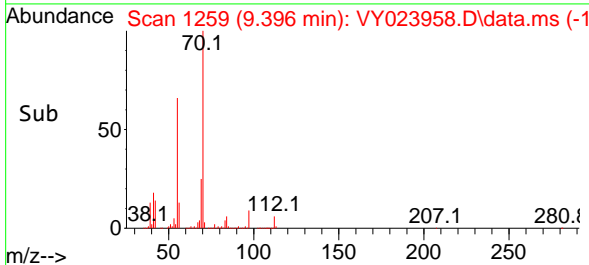
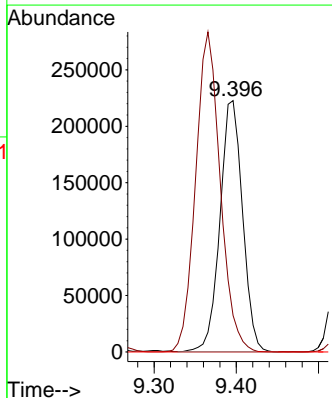
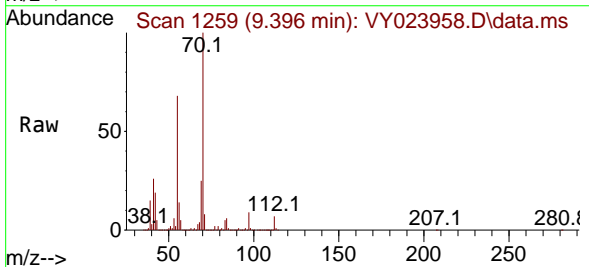
Instrument :  
 MSVOA\_Y  
 ClientSampleId :  
 B127(5.5-8)120925

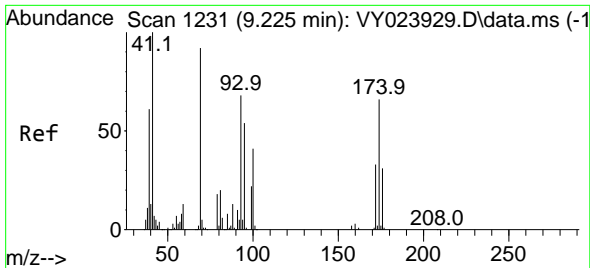
Tgt Ion: 63 Resp: 7050  
 Ion Ratio Lower Upper  
 63 100  
 65 217.8 25.1 37.7#



#47  
 Bromodichloromethane  
 Concen: 84.988 ug/l  
 RT: 9.396 min Scan# 1259  
 Delta R.T. -0.030 min  
 Lab File: VY023958.D  
 Acq: 11 Dec 2025 16:28

Tgt Ion: 83 Resp: 424917  
 Ion Ratio Lower Upper  
 83 100  
 85 14.5 50.7 76.1#  
 127 0.0 7.0 10.4#

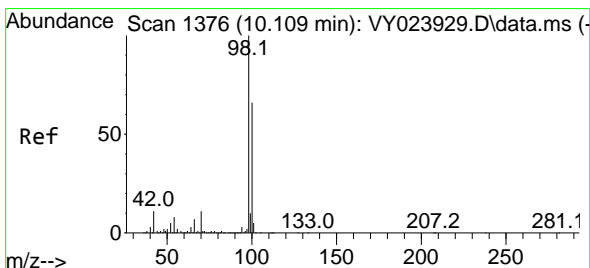
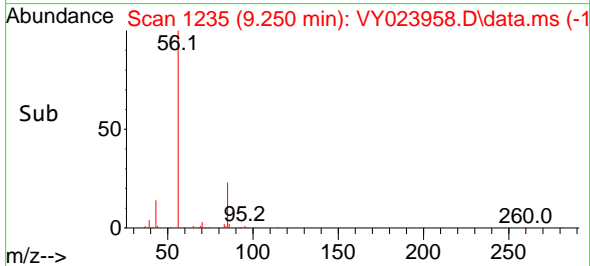
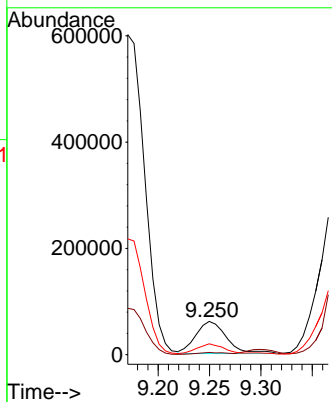
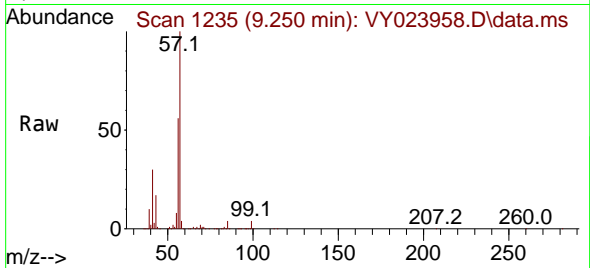




#48  
 Methyl methacrylate  
 Concen: 75.362 ug/l  
 RT: 9.250 min Scan# 11  
 Delta R.T. 0.024 min  
 Lab File: VY023958.D  
 Acq: 11 Dec 2025 16:28

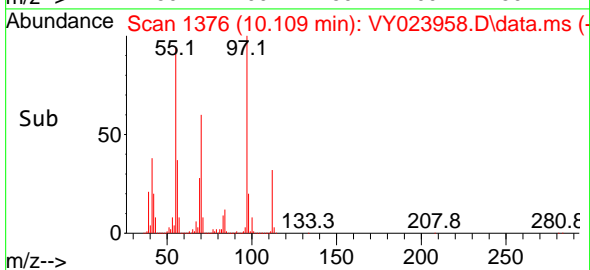
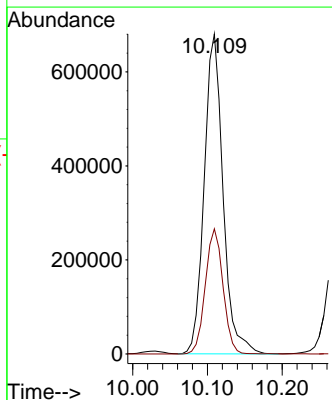
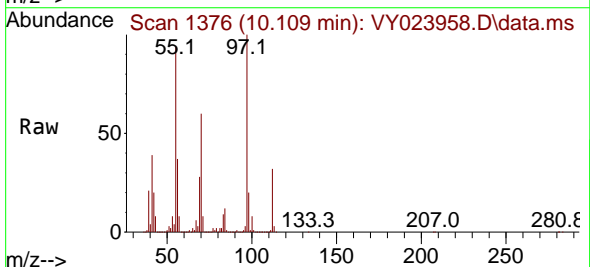
Instrument : MSVOA\_Y  
 ClientSampleId : B127(5.5-8)120925

Tgt Ion: 41 Resp: 126363  
 Ion Ratio Lower Upper  
 41 100  
 69 0.0 74.7 112.1#  
 39 0.0 47.4 71.2#

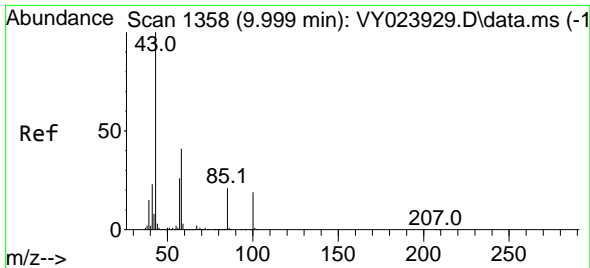


#50  
 Toluene-d8  
 Concen: 92.711 ug/l  
 RT: 10.109 min Scan# 1376  
 Delta R.T. 0.000 min  
 Lab File: VY023958.D  
 Acq: 11 Dec 2025 16:28

Tgt Ion: 98 Resp: 1190747  
 Ion Ratio Lower Upper  
 98 100  
 100 36.6 52.8 79.2#



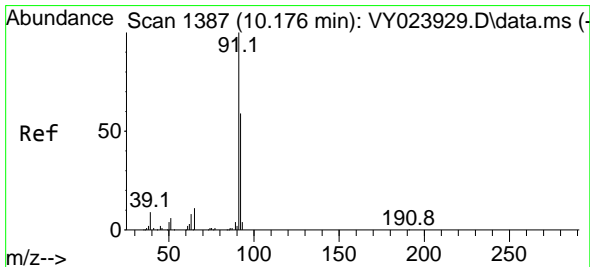
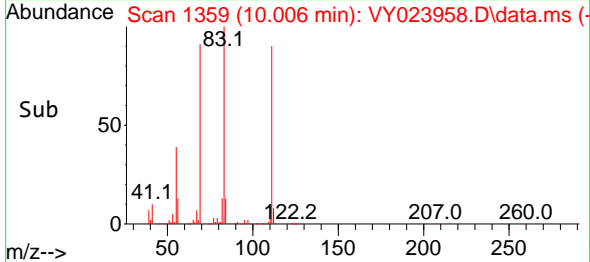
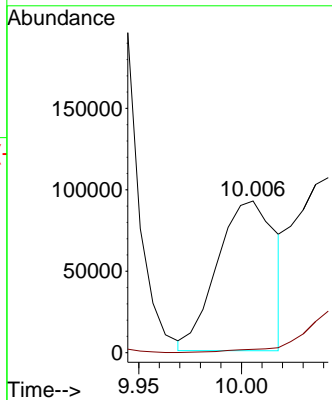
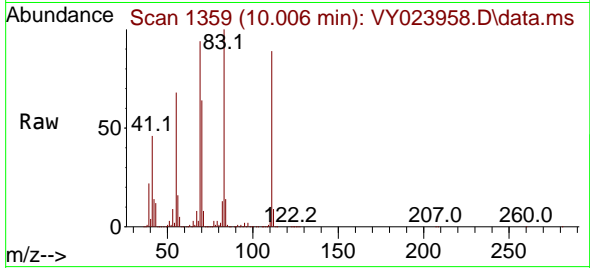




#51  
 4-Methyl-2-Pentanone  
 Concen: 94.890 ug/l  
 RT: 10.006 min Scan# 11  
 Delta R.T. 0.006 min  
 Lab File: VY023958.D  
 Acq: 11 Dec 2025 16:28

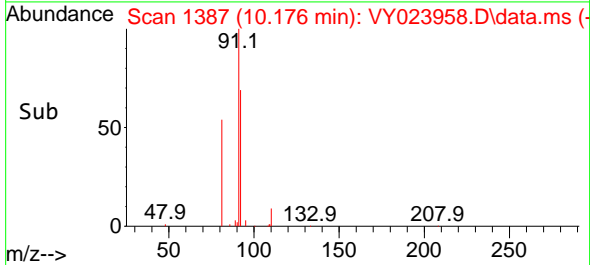
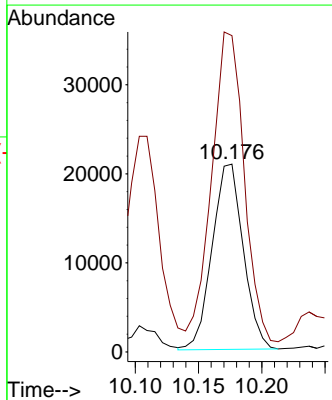
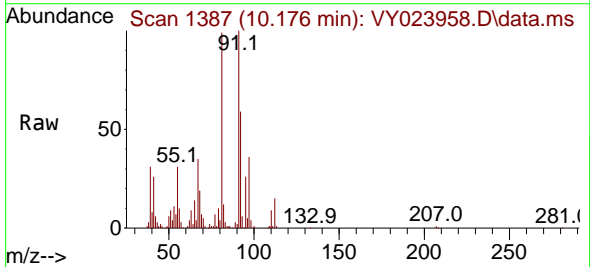
Instrument : MSVOA\_Y  
 ClientSampleId : B127(5.5-8)120925

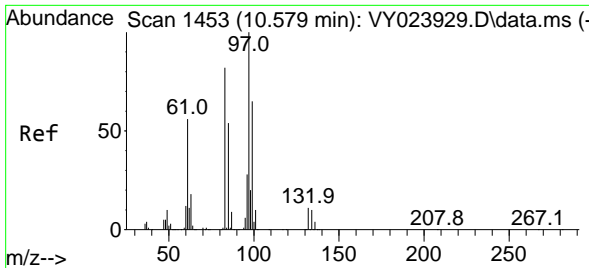
Tgt Ion: 43 Resp: 181087  
 Ion Ratio Lower Upper  
 43 100  
 58 0.0 33.1 49.7#



#52  
 Toluene  
 Concen: 3.759 ug/l  
 RT: 10.176 min Scan# 1387  
 Delta R.T. 0.000 min  
 Lab File: VY023958.D  
 Acq: 11 Dec 2025 16:28

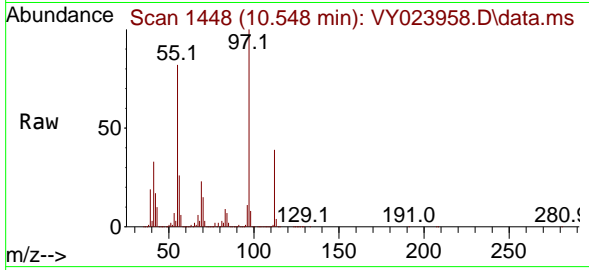
Tgt Ion: 92 Resp: 35576  
 Ion Ratio Lower Upper  
 92 100  
 91 172.6 135.8 203.6





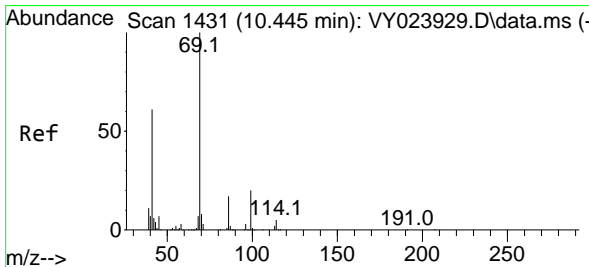
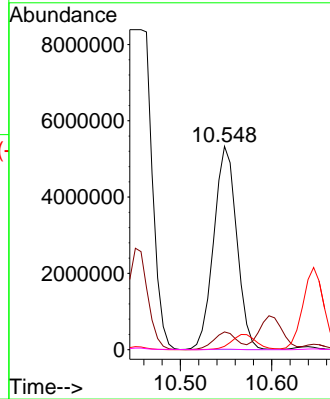
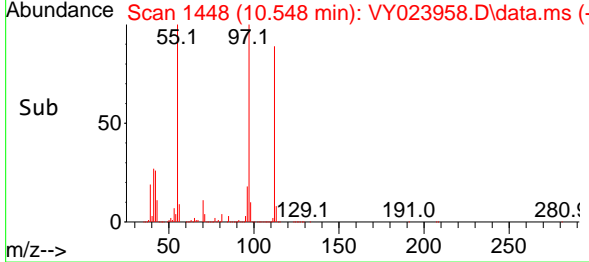
#55  
 1,1,2-Trichloroethane  
 Concen: 3548.256 ug/l  
 RT: 10.548 min Scan# 1453  
 Delta R.T. -0.030 min  
 Lab File: VY023958.D  
 Acq: 11 Dec 2025 16:28

Instrument : MSVOA\_Y  
 ClientSampleId : B127(5.5-8)120925

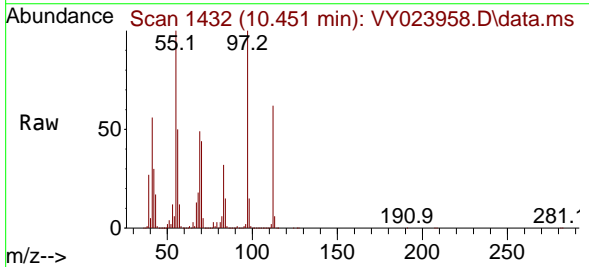


Tgt Ion: 97 Resp: 9281661

Ion	Ratio	Lower	Upper
97	100		
83	8.7	65.8	98.6#
85	1.7	43.1	64.7#
99	0.3	51.6	77.4#

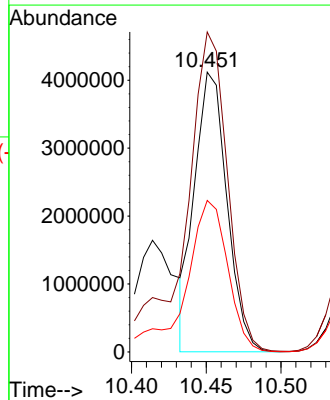
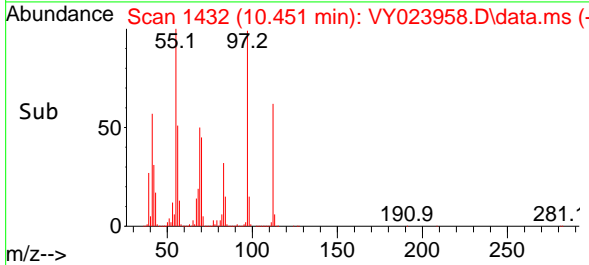


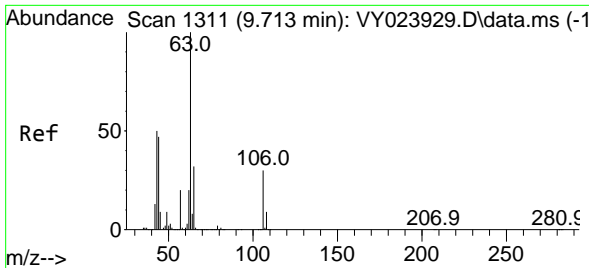
#56  
 Ethyl methacrylate  
 Concen: 1995.745 ug/l  
 RT: 10.451 min Scan# 1432  
 Delta R.T. 0.006 min  
 Lab File: VY023958.D  
 Acq: 11 Dec 2025 16:28



Tgt Ion: 69 Resp: 6188927

Ion	Ratio	Lower	Upper
69	100		
41	153.8	49.0	73.4#
39	73.5	29.1	43.7#

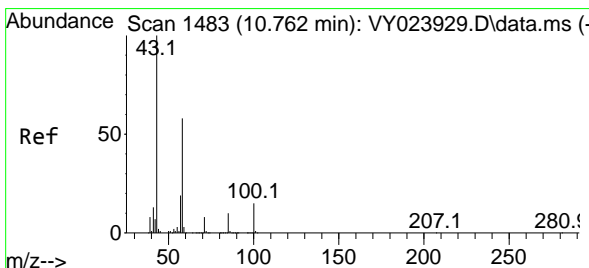
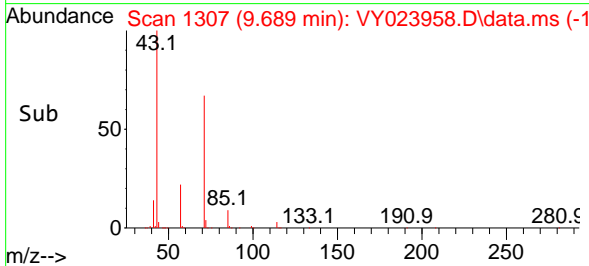
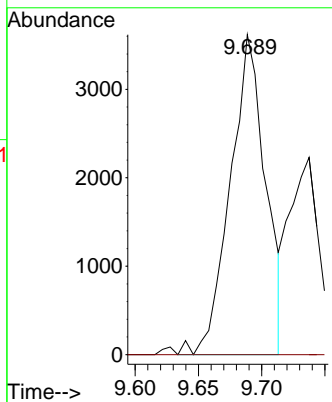
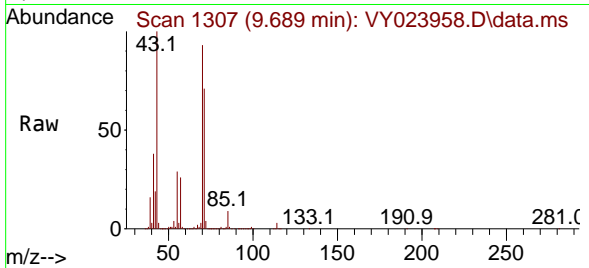




#58  
 2-Chloroethyl Vinyl ether  
 Concen: 5.237 ug/l  
 RT: 9.689 min Scan# 111  
 Delta R.T. -0.024 min  
 Lab File: VY023958.D  
 Acq: 11 Dec 2025 16:28

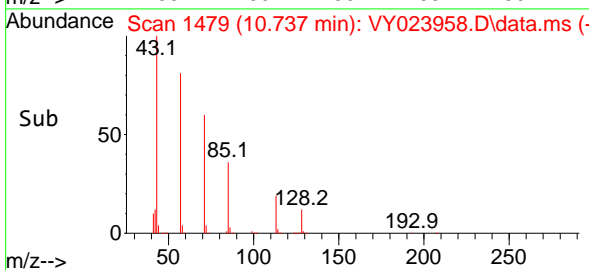
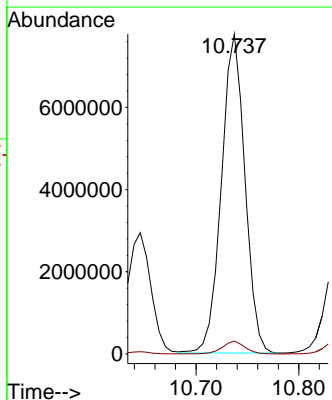
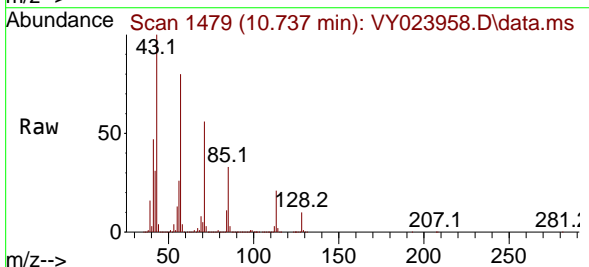
Instrument : MSVOA\_Y  
 ClientSampleId : B127(5.5-8)120925

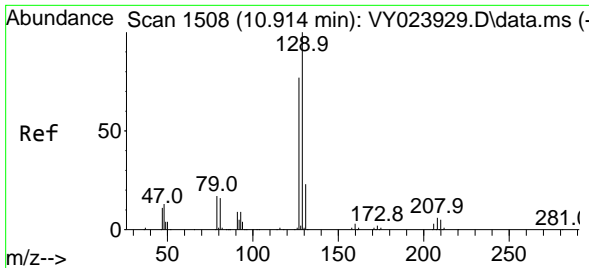
Tgt Ion: 63 Resp: 7034  
 Ion Ratio Lower Upper  
 63 100  
 106 0.0 25.2 37.8#



#59  
 2-Hexanone  
 Concen: 8499.277 ug/l  
 RT: 10.737 min Scan# 1479  
 Delta R.T. -0.024 min  
 Lab File: VY023958.D  
 Acq: 11 Dec 2025 16:28

Tgt Ion: 43 Resp:12310165  
 Ion Ratio Lower Upper  
 43 100  
 58 3.8 29.0 87.0#

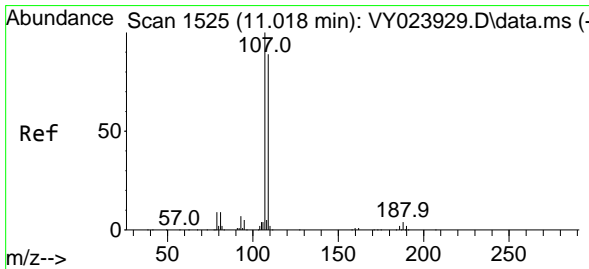
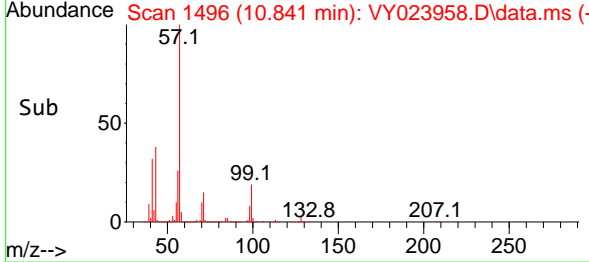
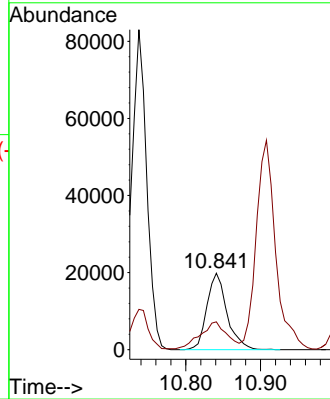
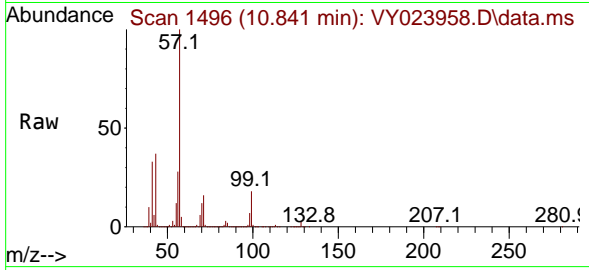




#60  
 Dibromochloromethane  
 Concen: 10.200 ug/l  
 RT: 10.841 min Scan# 1496  
 Delta R.T. -0.073 min  
 Lab File: VY023958.D  
 Acq: 11 Dec 2025 16:28

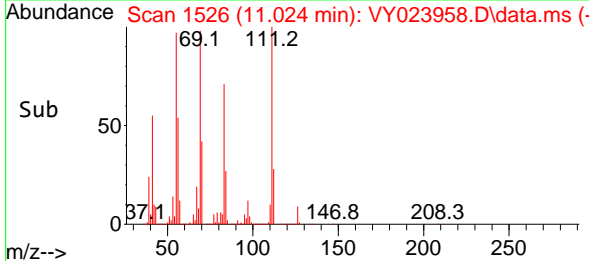
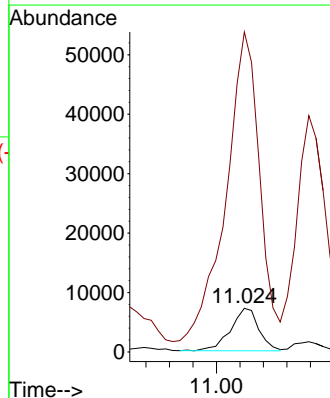
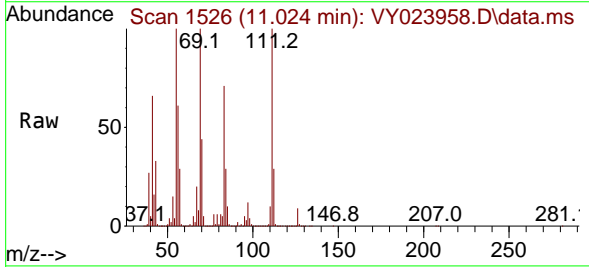
Instrument : MSVOA\_Y  
 ClientSampleId : B127(5.5-8)120925

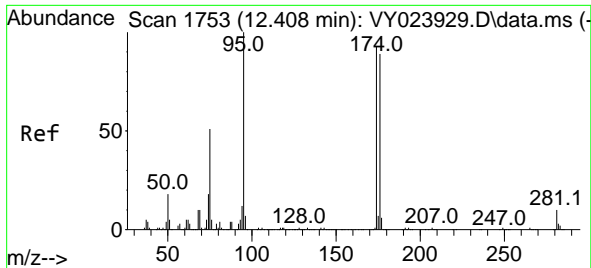
Tgt Ion:129 Resp: 36942  
 Ion Ratio Lower Upper  
 129 100  
 127 45.7 38.1 114.5



#61  
 1,2-Dibromoethane  
 Concen: 4.885 ug/l  
 RT: 11.024 min Scan# 1526  
 Delta R.T. 0.006 min  
 Lab File: VY023958.D  
 Acq: 11 Dec 2025 16:28

Tgt Ion:107 Resp: 11842  
 Ion Ratio Lower Upper  
 107 100  
 109 867.4 75.3 112.9#



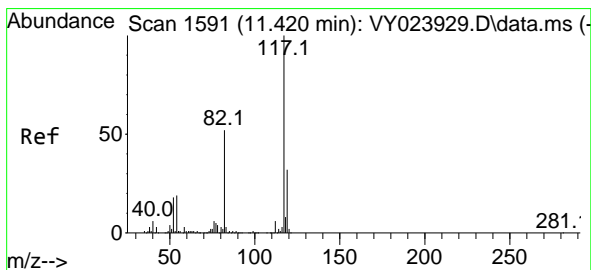
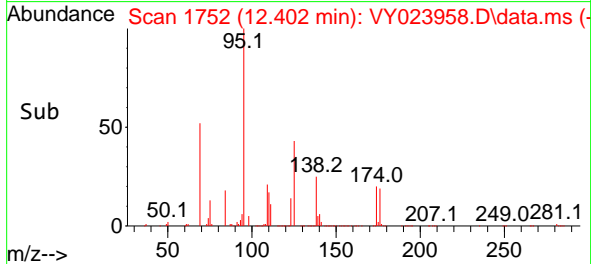
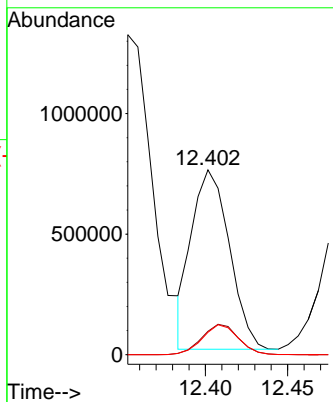
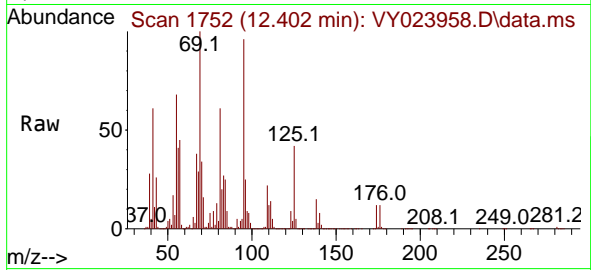


#62  
 4-Bromofluorobenzene  
 Concen: 277.534 ug/l  
 RT: 12.402 min Scan# 11  
 Delta R.T. -0.006 min  
 Lab File: VY023958.D  
 Acq: 11 Dec 2025 16:28

Instrument :  
 MSVOA\_Y  
 ClientSampleId :  
 B127(5.5-8)120925

Tgt Ion: 95 Resp: 1190401

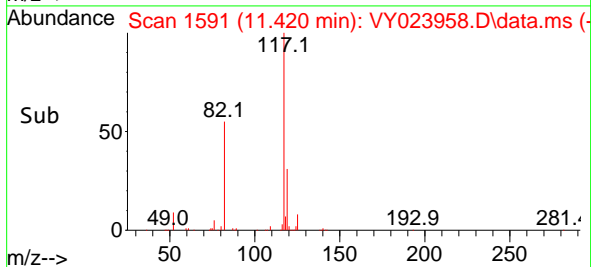
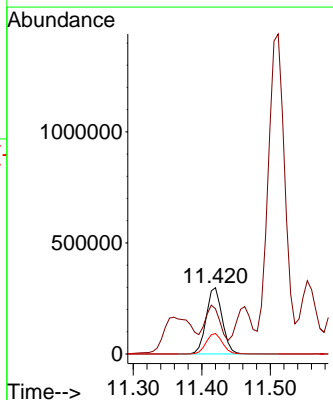
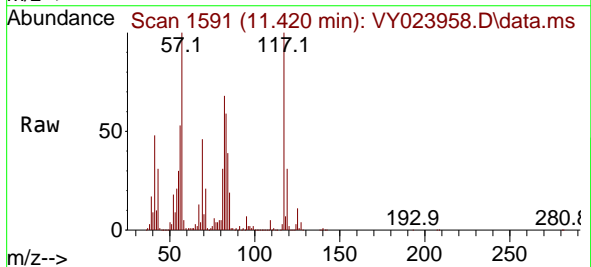
Ion	Ratio	Lower	Upper
95	100		
174	16.5	0.0	187.4
176	15.9	0.0	179.6

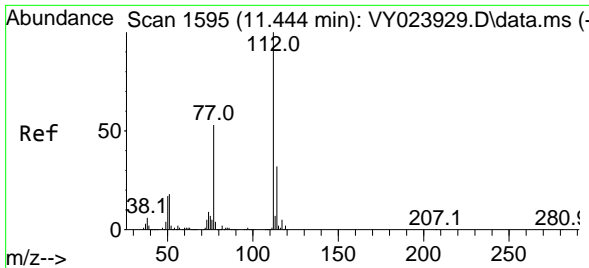


#63  
 Chlorobenzene-d5  
 Concen: 50.000 ug/l  
 RT: 11.420 min Scan# 1591  
 Delta R.T. 0.000 min  
 Lab File: VY023958.D  
 Acq: 11 Dec 2025 16:28

Tgt Ion: 117 Resp: 482887

Ion	Ratio	Lower	Upper
117	100		
82	15.3	41.4	62.2#
119	30.9	25.5	38.3

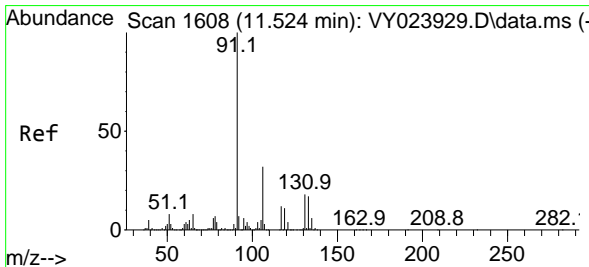
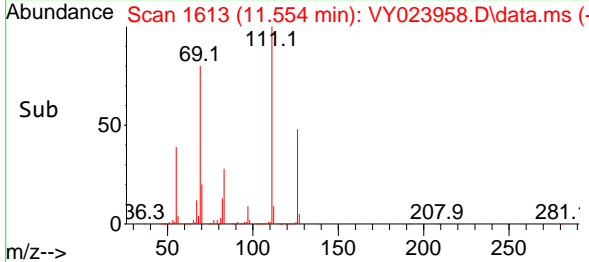
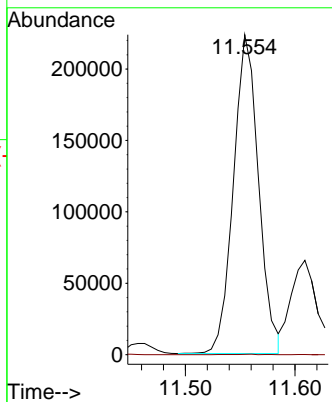
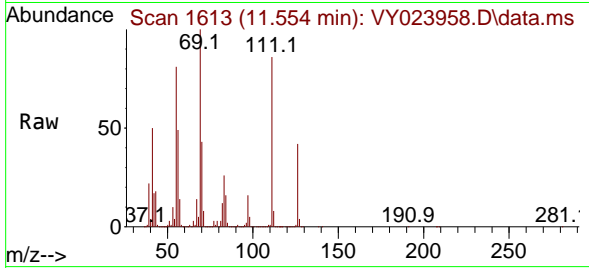




#65  
 Chlorobenzene  
 Concen: 31.757 ug/l  
 RT: 11.554 min Scan# 1613  
 Delta R.T. 0.110 min  
 Lab File: VY023958.D  
 Acq: 11 Dec 2025 16:28

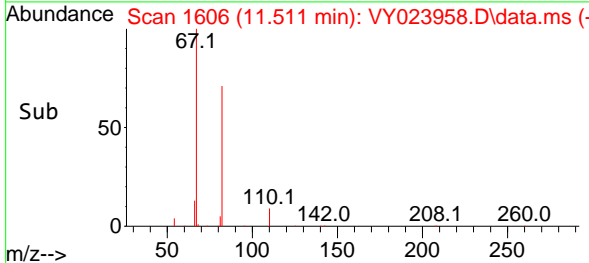
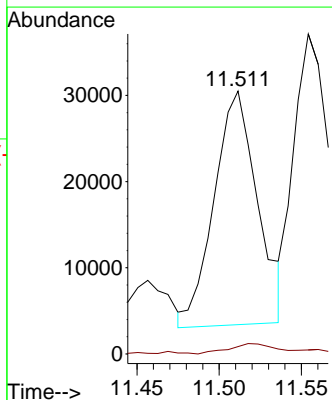
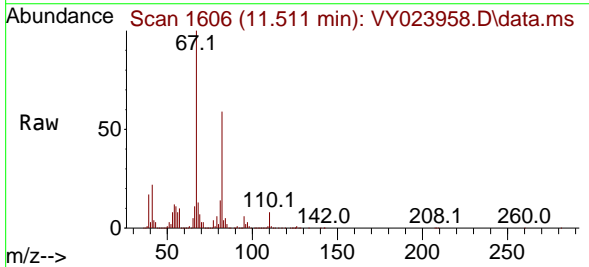
Instrument : MSVOA\_Y  
 ClientSampleId : B127(5.5-8)120925

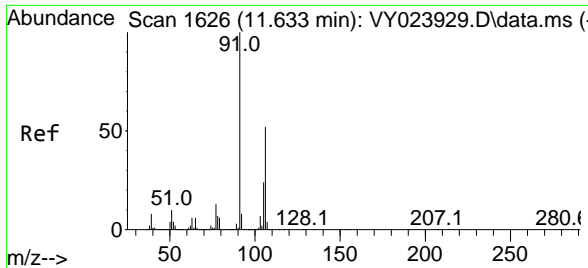
Tgt Ion: 112 Resp: 355335  
 Ion Ratio Lower Upper  
 112 100  
 114 0.1 25.3 37.9#



#67  
 Ethyl Benzene  
 Concen: 2.657 ug/l  
 RT: 11.511 min Scan# 1606  
 Delta R.T. -0.012 min  
 Lab File: VY023958.D  
 Acq: 11 Dec 2025 16:28

Tgt Ion: 91 Resp: 49808  
 Ion Ratio Lower Upper  
 91 100  
 106 2.9 25.8 38.8#

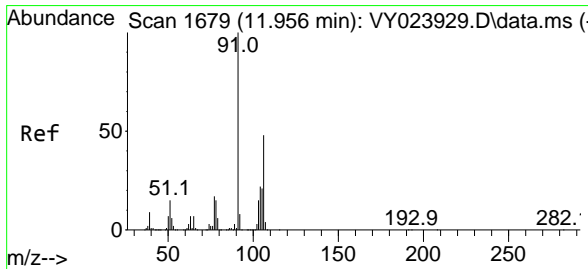
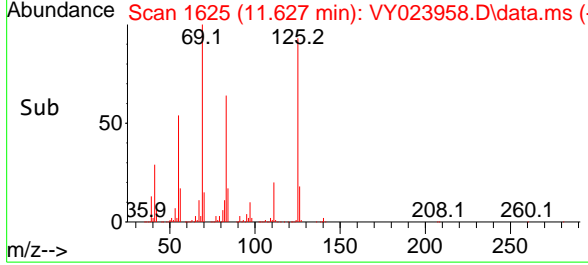
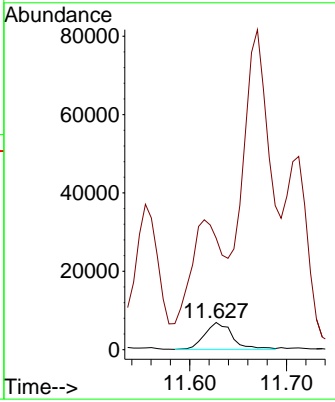
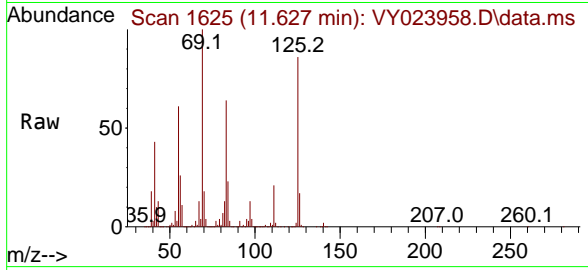




#68  
 m/p-Xylenes  
 Concen: 1.833 ug/l  
 RT: 11.627 min Scan# 1625  
 Delta R.T. -0.006 min  
 Lab File: VY023958.D  
 Acq: 11 Dec 2025 16:28

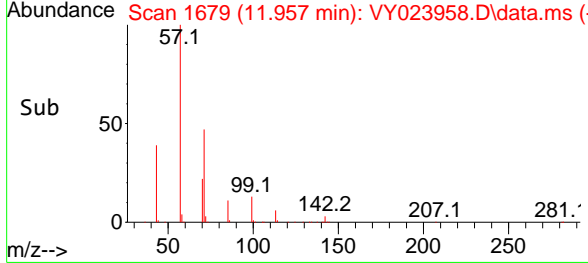
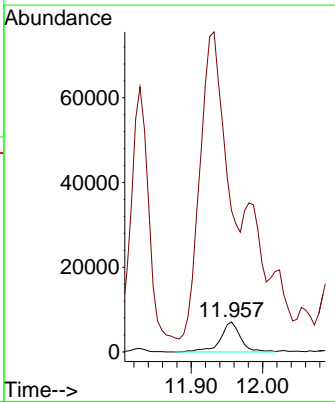
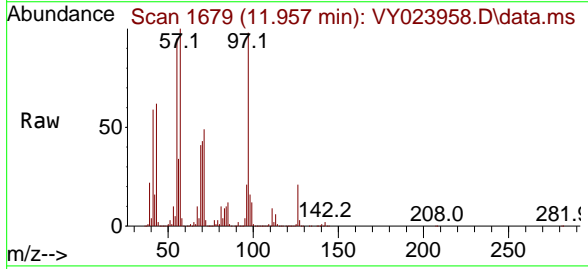
Instrument : MSVOA\_Y  
 ClientSampleId : B127(5.5-8)120925

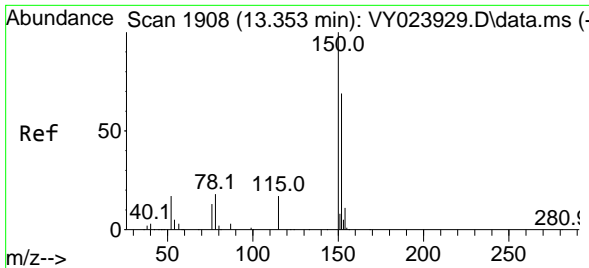
Tgt Ion:106 Resp: 13645  
 Ion Ratio Lower Upper  
 106 100  
 91 541.5 155.0 232.6#



#69  
 o-Xylene  
 Concen: 1.988 ug/l  
 RT: 11.957 min Scan# 1679  
 Delta R.T. 0.000 min  
 Lab File: VY023958.D  
 Acq: 11 Dec 2025 16:28

Tgt Ion:106 Resp: 13839  
 Ion Ratio Lower Upper  
 106 100  
 91 0.0 102.1 306.1#

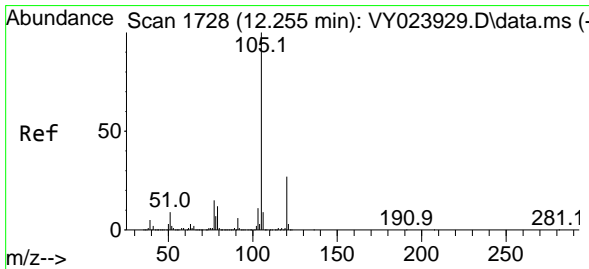
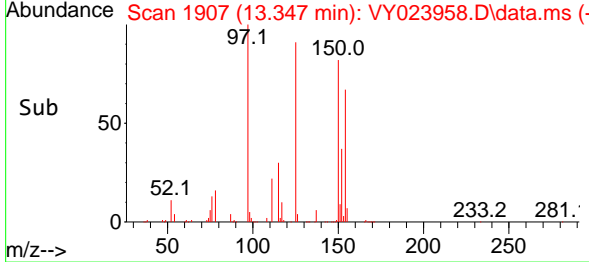
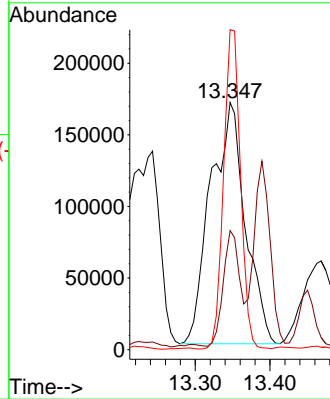
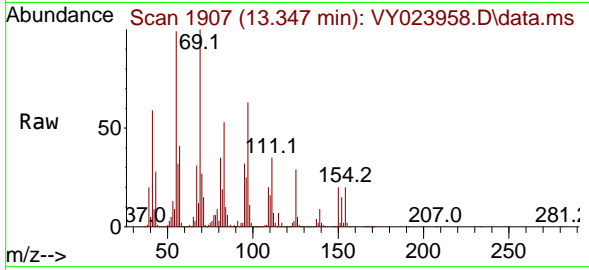




#72  
 1,4-Dichlorobenzene-d4  
 Concen: 50.000 ug/l  
 RT: 13.347 min Scan# 1907  
 Delta R.T. -0.006 min  
 Lab File: VY023958.D  
 Acq: 11 Dec 2025 16:28

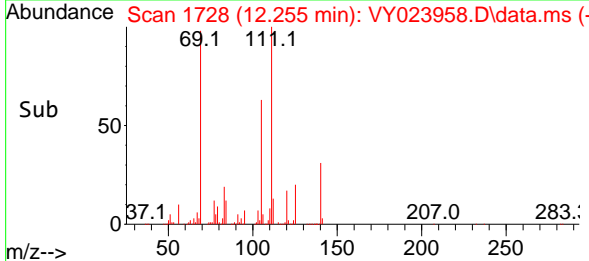
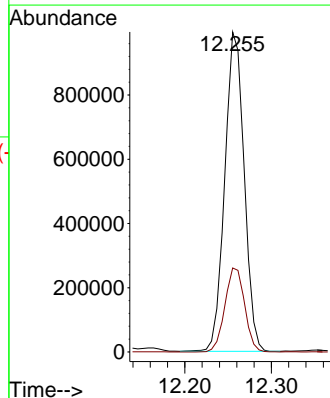
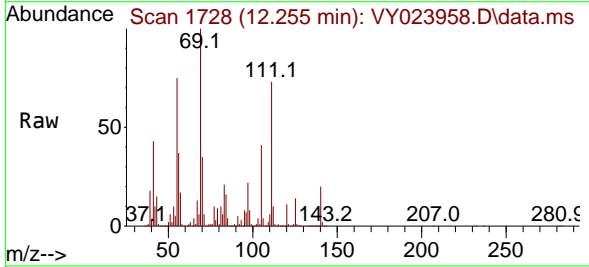
Instrument : MSVOA\_Y  
 ClientSampleId : B127(5.5-8)120925

Tgt Ion:152 Resp: 546103  
 Ion Ratio Lower Upper  
 152 100  
 115 22.6 27.3 81.9#  
 150 64.2 0.0 347.6

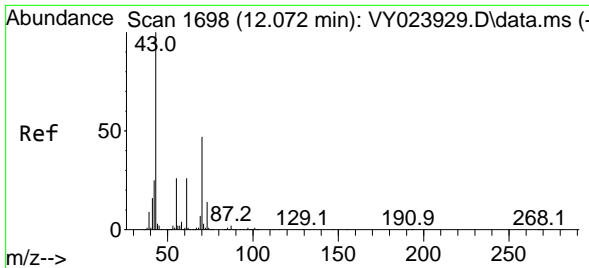


#73  
 Isopropylbenzene  
 Concen: 38.785 ug/l  
 RT: 12.255 min Scan# 1728  
 Delta R.T. 0.000 min  
 Lab File: VY023958.D  
 Acq: 11 Dec 2025 16:28

Tgt Ion:105 Resp: 1547926  
 Ion Ratio Lower Upper  
 105 100  
 120 26.7 13.7 41.0

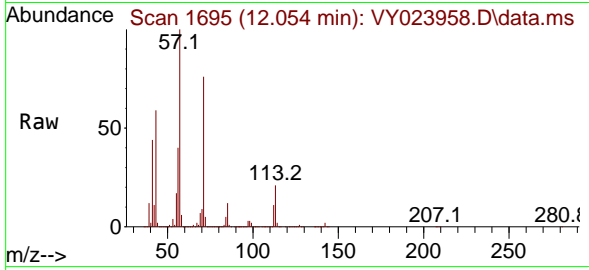






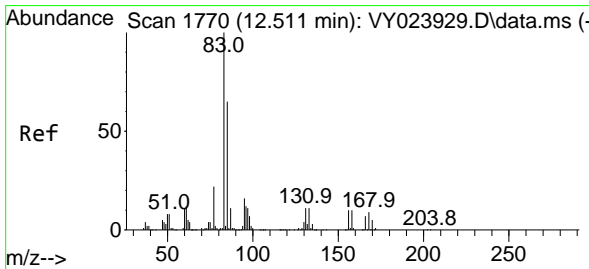
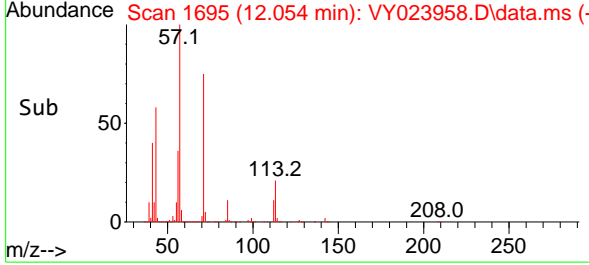
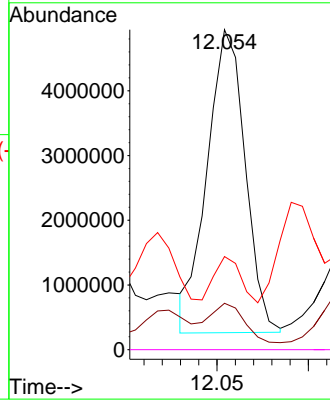
#74  
 N-amy1 acetate  
 Concen: 956.239 ug/l  
 RT: 12.054 min Scan# 1  
 Delta R.T. -0.018 min  
 Lab File: VY023958.D  
 Acq: 11 Dec 2025 16:28

Instrument :  
 MSVOA\_Y  
 ClientSampleId :  
 B127(5.5-8)120925



Tgt Ion: 43 Resp: 6769346

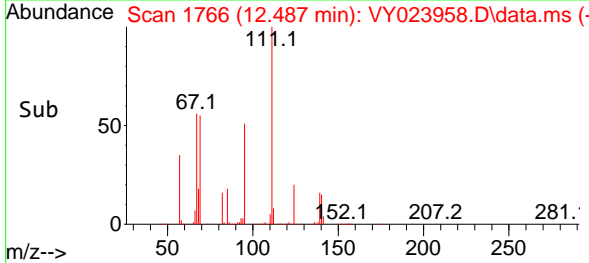
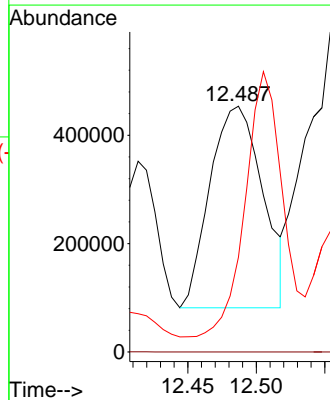
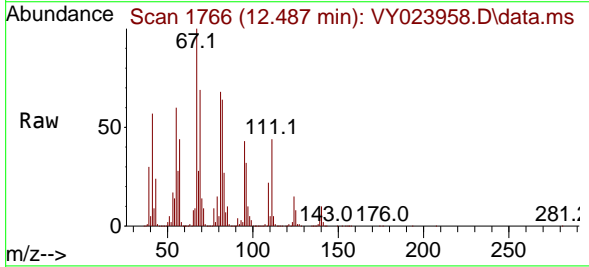
Ion	Ratio	Lower	Upper
43	100		
70	12.3	37.4	56.0#
55	19.3	21.6	32.4#
61	0.0	20.7	31.1#

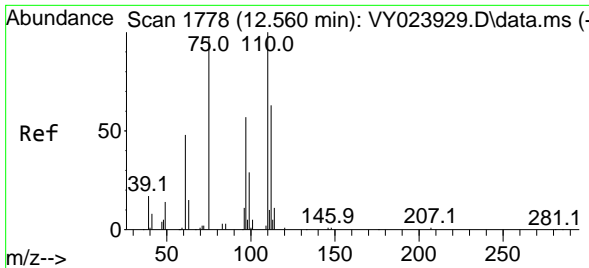


#75  
 1,1,2,2-Tetrachloroethane  
 Concen: 164.592 ug/l  
 RT: 12.487 min Scan# 1766  
 Delta R.T. -0.024 min  
 Lab File: VY023958.D  
 Acq: 11 Dec 2025 16:28

Tgt Ion: 83 Resp: 1000221

Ion	Ratio	Lower	Upper
83	100		
131	0.0	5.6	16.8#
85	92.6	32.0	96.2

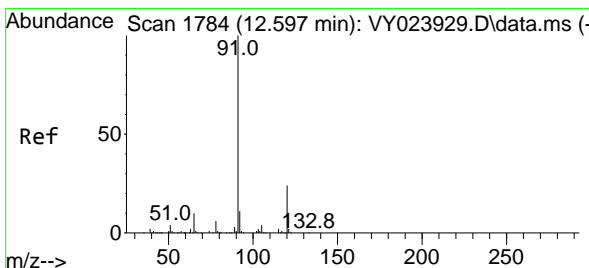
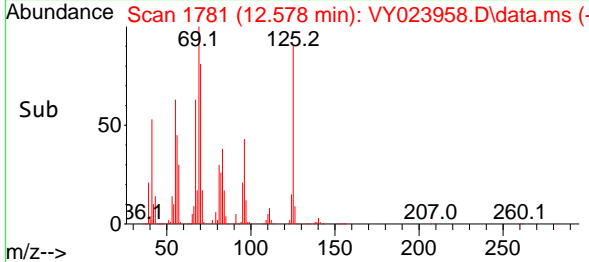
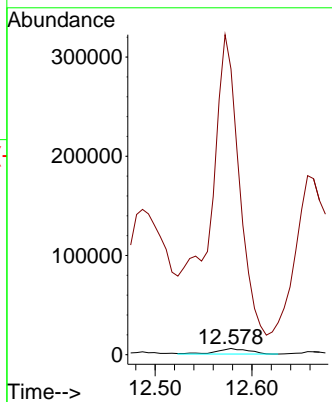
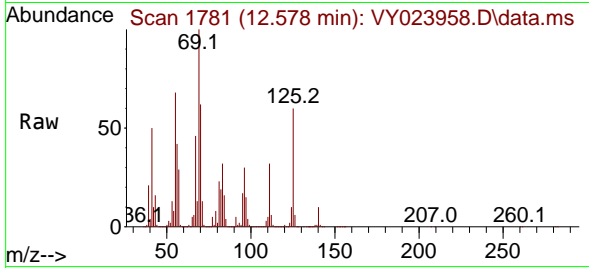




#76  
 1,2,3-Trichloropropane  
 Concen: 2.815 ug/l  
 RT: 12.578 min Scan# 1781  
 Delta R.T. 0.018 min  
 Lab File: VY023958.D  
 Acq: 11 Dec 2025 16:28

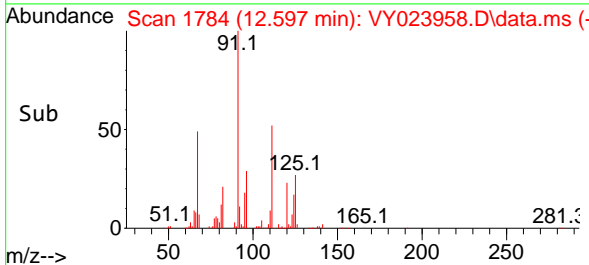
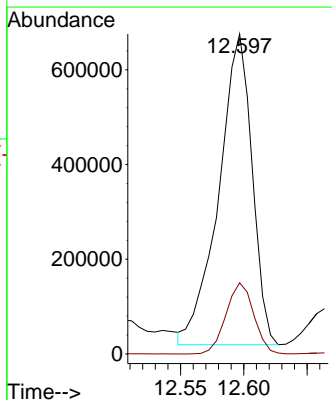
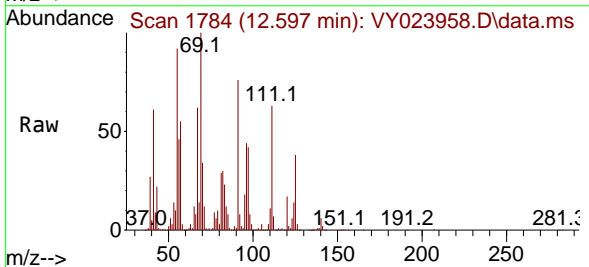
Instrument :  
 MSVOA\_Y  
 ClientSampleId :  
 B127(5.5-8)120925

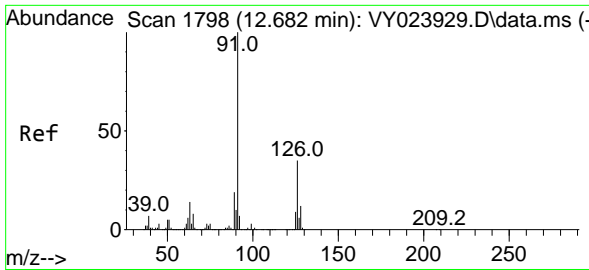
Tgt Ion: 75 Resp: 13002  
 Ion Ratio Lower Upper  
 75 100  
 77 4862.9 0.0 0.0#



#78  
 n-propylbenzene  
 Concen: 25.843 ug/l  
 RT: 12.597 min Scan# 1784  
 Delta R.T. 0.000 min  
 Lab File: VY023958.D  
 Acq: 11 Dec 2025 16:28

Tgt Ion: 91 Resp: 1200016  
 Ion Ratio Lower Upper  
 91 100  
 120 19.1 12.0 36.0

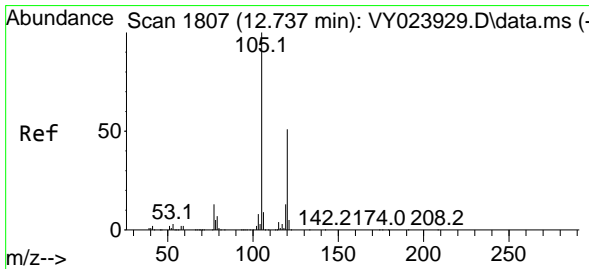
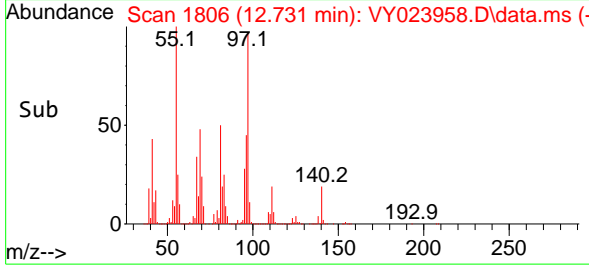
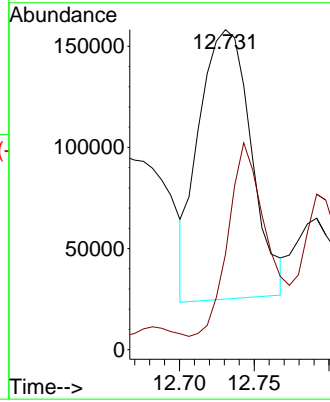
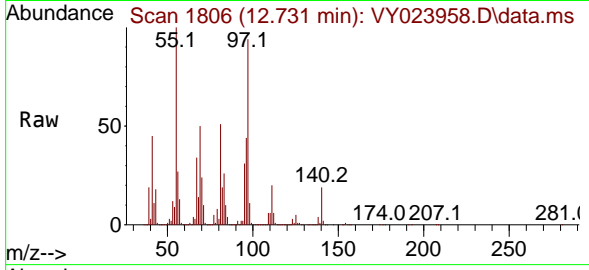




#79  
 2-Chlorotoluene  
 Concen: 12.292 ug/l  
 RT: 12.731 min Scan# 1806  
 Delta R.T. 0.049 min  
 Lab File: VY023958.D  
 Acq: 11 Dec 2025 16:28

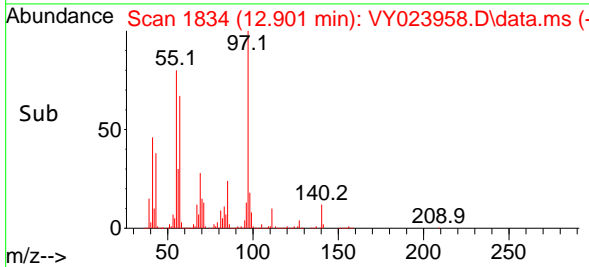
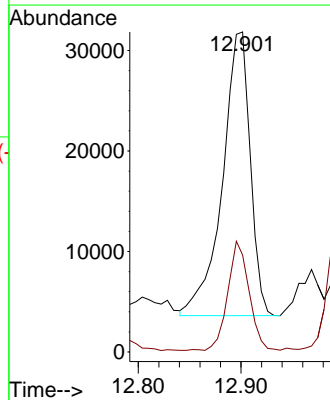
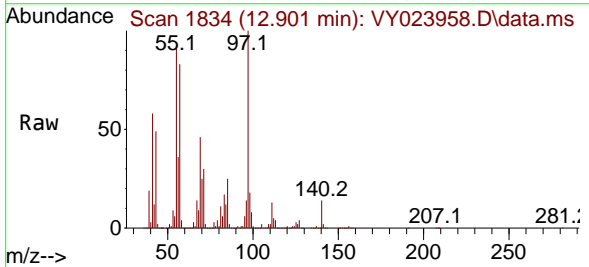
Instrument : MSVOA\_Y  
 ClientSampleId : B127(5.5-8)120925

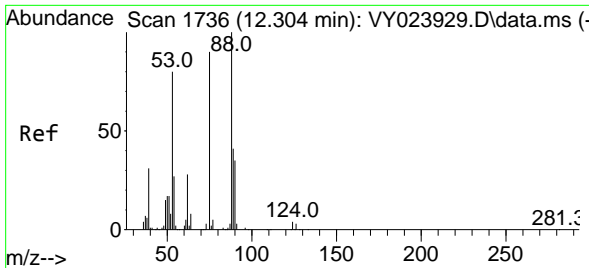
Tgt Ion: 91 Resp: 324216  
 Ion Ratio Lower Upper  
 91 100  
 126 53.6 17.9 53.7



#80  
 1,3,5-Trimethylbenzene  
 Concen: 1.669 ug/l  
 RT: 12.901 min Scan# 1834  
 Delta R.T. 0.165 min  
 Lab File: VY023958.D  
 Acq: 11 Dec 2025 16:28

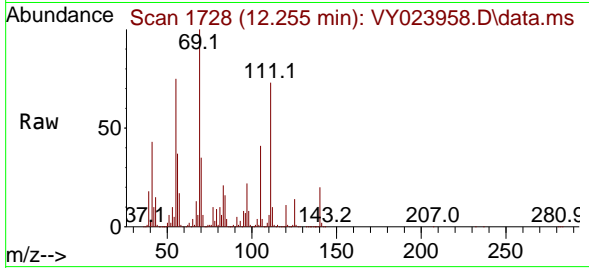
Tgt Ion: 105 Resp: 53136  
 Ion Ratio Lower Upper  
 105 100  
 120 29.4 25.7 77.1



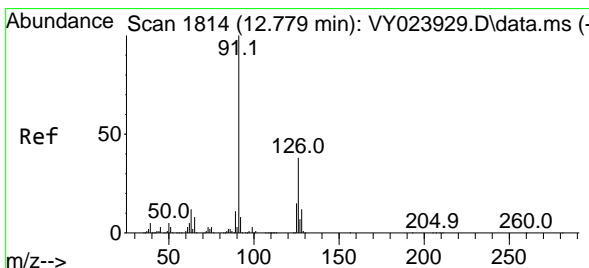
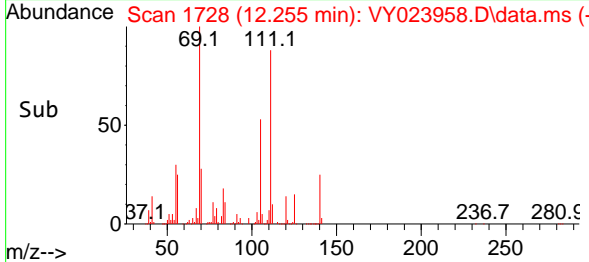
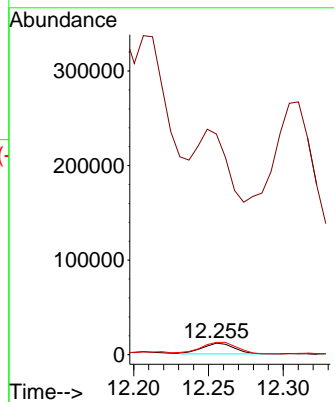


#81  
 trans-1,4-Dichloro-2-butene  
 Concen: 8.156 ug/l  
 RT: 12.255 min Scan# 11  
 Delta R.T. -0.049 min  
 Lab File: VY023958.D  
 Acq: 11 Dec 2025 16:28

Instrument :  
 MSVOA\_Y  
 ClientSampleId :  
 B127(5.5-8)120925

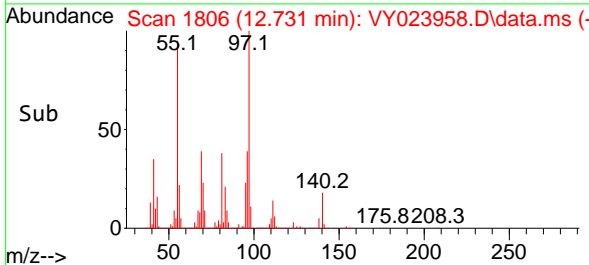
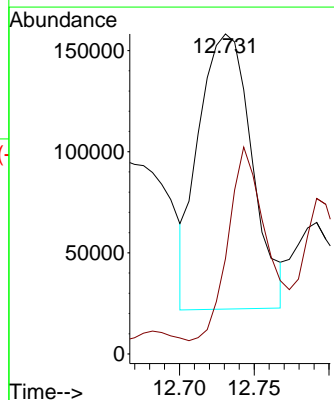
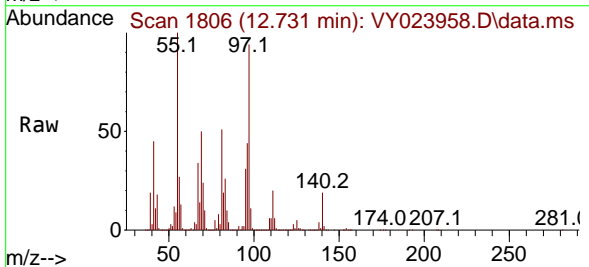


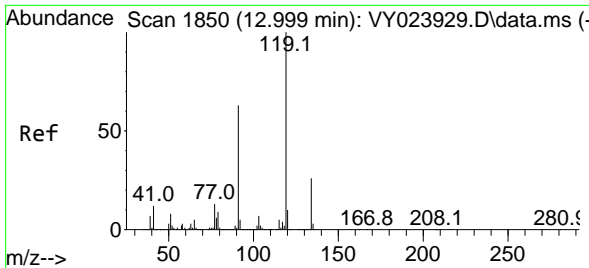
Tgt Ion: 75 Resp: 16552  
 Ion Ratio Lower Upper  
 75 100  
 53 0.0 73.4 110.0#  
 89 126.4 38.9 58.3#



#82  
 4-Chlorotoluene  
 Concen: 12.380 ug/l  
 RT: 12.731 min Scan# 1806  
 Delta R.T. -0.049 min  
 Lab File: VY023958.D  
 Acq: 11 Dec 2025 16:28

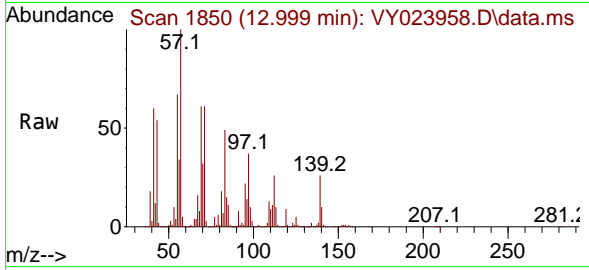
Tgt Ion: 91 Resp: 336153  
 Ion Ratio Lower Upper  
 91 100  
 126 51.7 18.1 54.1





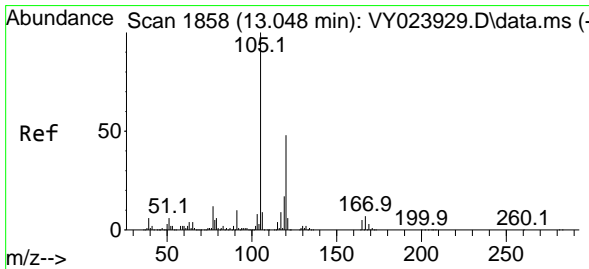
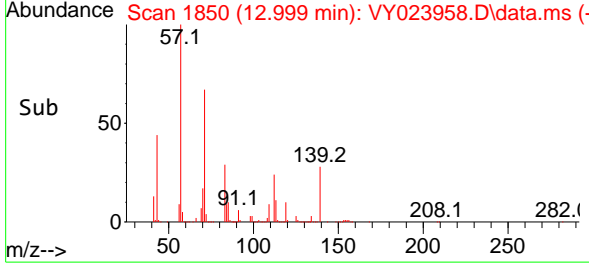
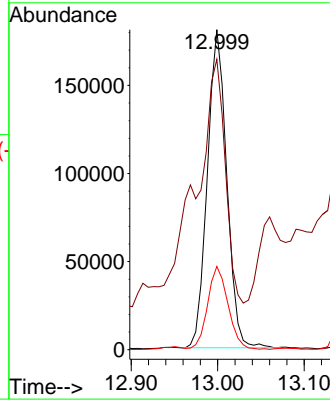
#83  
 tert-Butylbenzene  
 Concen: 9.564 ug/l  
 RT: 12.999 min Scan# 1850  
 Delta R.T. 0.000 min  
 Lab File: VY023958.D  
 Acq: 11 Dec 2025 16:28

Instrument : MSVOA\_Y  
 ClientSampleId : B127(5.5-8)120925

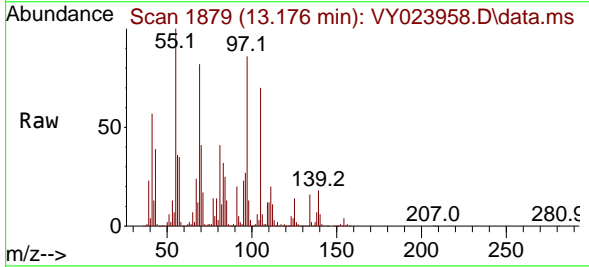


Tgt Ion:119 Resp: 281356

Ion	Ratio	Lower	Upper
119	100		
91	114.4	31.6	94.7#
134	27.3	13.4	40.1

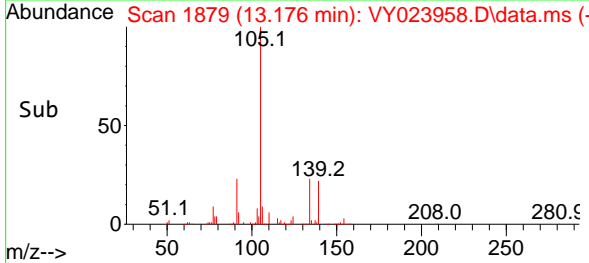
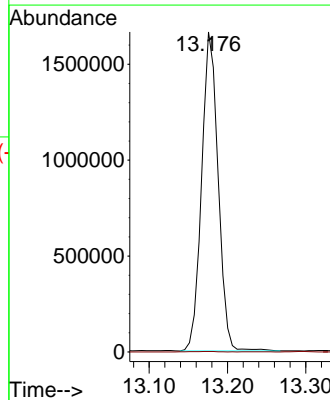


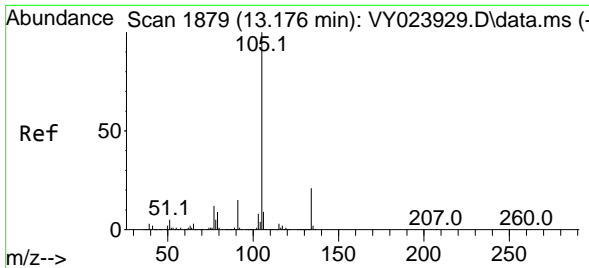
#84  
 1,2,4-Trimethylbenzene  
 Concen: 77.115 ug/l  
 RT: 13.176 min Scan# 1879  
 Delta R.T. 0.128 min  
 Lab File: VY023958.D  
 Acq: 11 Dec 2025 16:28



Tgt Ion:105 Resp: 2432294

Ion	Ratio	Lower	Upper
105	100		
120	0.2	23.4	70.3#

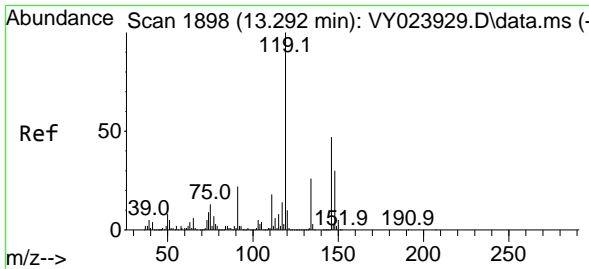
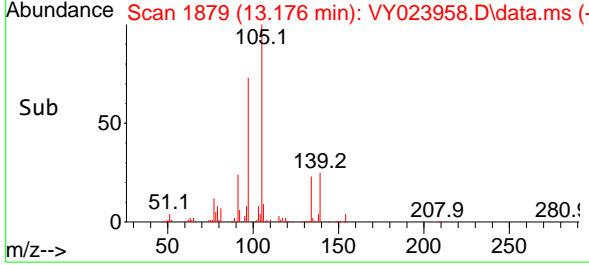
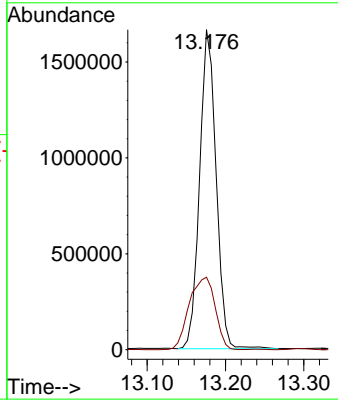
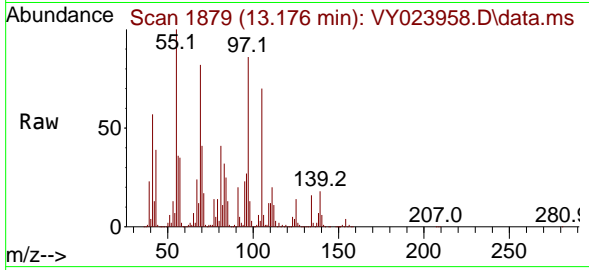




#85  
 sec-Butylbenzene  
 Concen: 56.679 ug/l  
 RT: 13.176 min Scan# 11  
 Delta R.T. 0.000 min  
 Lab File: VY023958.D  
 Acq: 11 Dec 2025 16:28

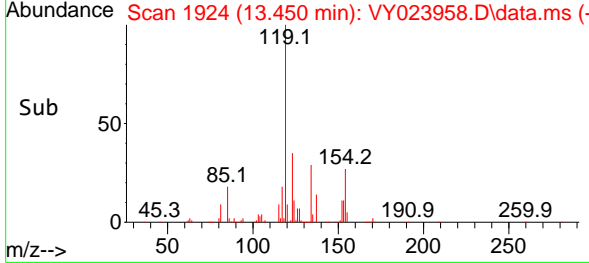
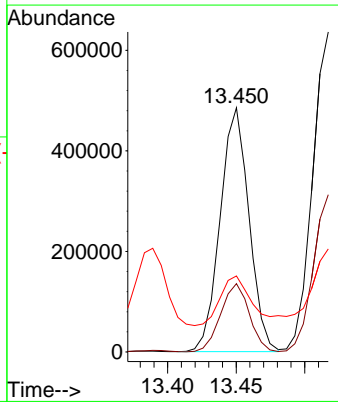
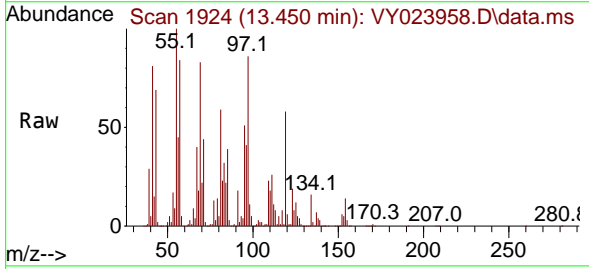
Instrument : MSVOA\_Y  
 ClientSampleId : B127(5.5-8)120925

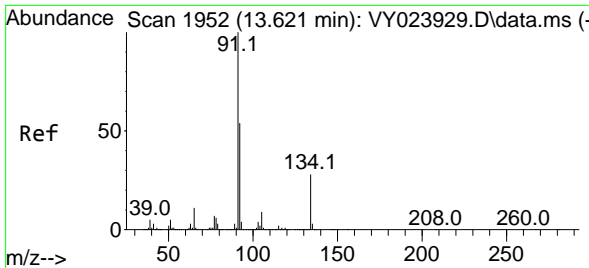
Tgt Ion:105 Resp: 2432294  
 Ion Ratio Lower Upper  
 105 100  
 134 35.7 10.6 31.8#



#86  
 p-Isopropyltoluene  
 Concen: 19.543 ug/l  
 RT: 13.450 min Scan# 1924  
 Delta R.T. 0.159 min  
 Lab File: VY023958.D  
 Acq: 11 Dec 2025 16:28

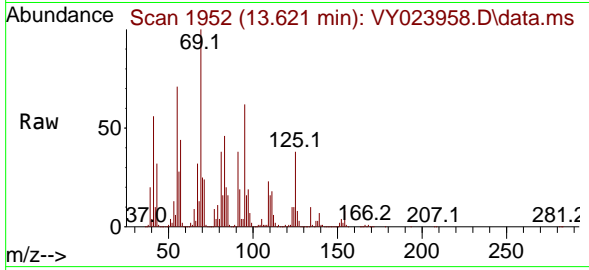
Tgt Ion:119 Resp: 709876  
 Ion Ratio Lower Upper  
 119 100  
 134 27.7 13.6 40.7  
 91 28.8 11.1 33.3





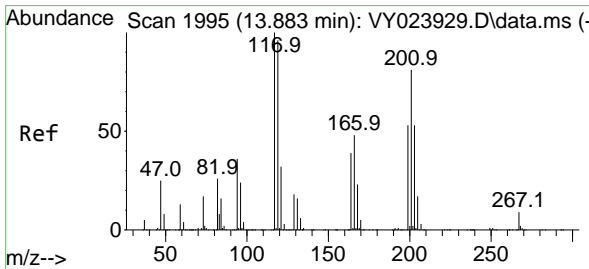
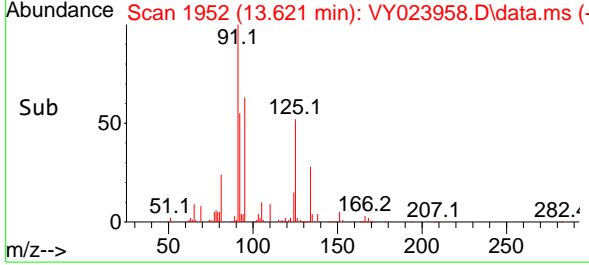
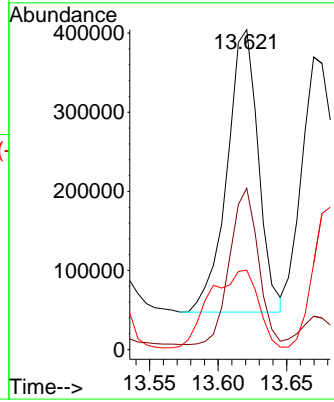
#89  
 n-Butylbenzene  
 Concen: 17.830 ug/l  
 RT: 13.621 min Scan# 1952  
 Delta R.T. 0.000 min  
 Lab File: VY023958.D  
 Acq: 11 Dec 2025 16:28

Instrument : MSVOA\_Y  
 ClientSampleId : B127(5.5-8)120925



Tgt Ion: 91 Resp: 566641

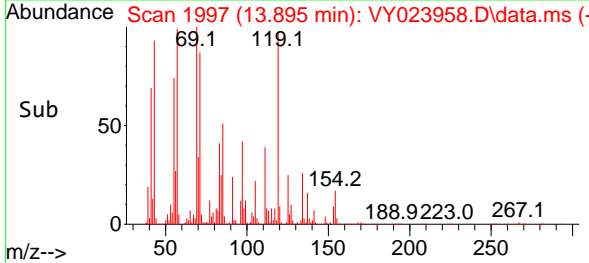
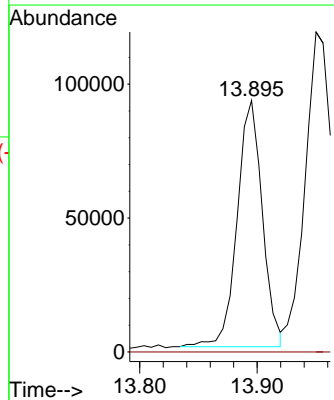
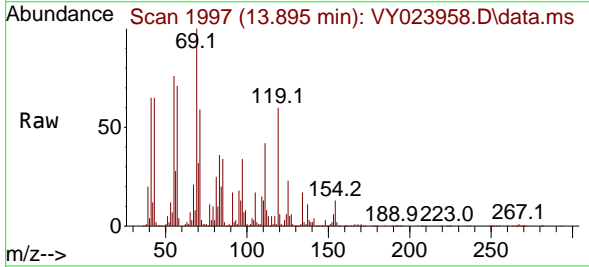
Ion	Ratio	Lower	Upper
91	100		
92	50.4	26.9	80.6
134	42.6	13.9	41.6#

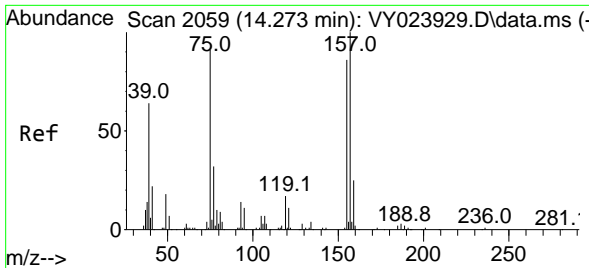


#90  
 Hexachloroethane  
 Concen: 18.486 ug/l  
 RT: 13.895 min Scan# 1997  
 Delta R.T. 0.012 min  
 Lab File: VY023958.D  
 Acq: 11 Dec 2025 16:28

Tgt Ion: 117 Resp: 137024

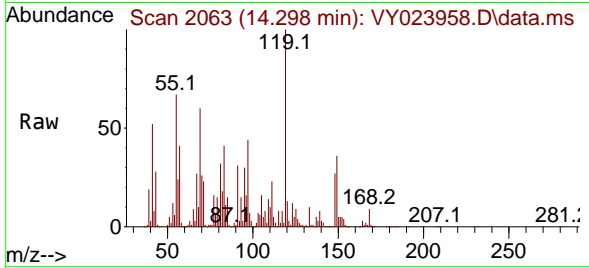
Ion	Ratio	Lower	Upper
117	100		
201	0.0	42.4	127.3#



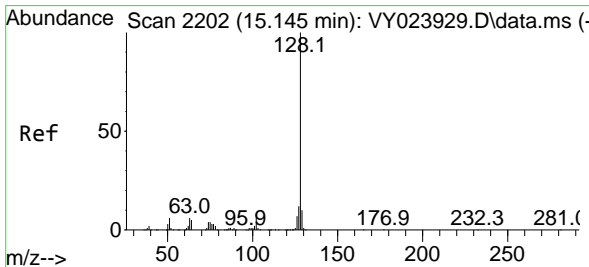
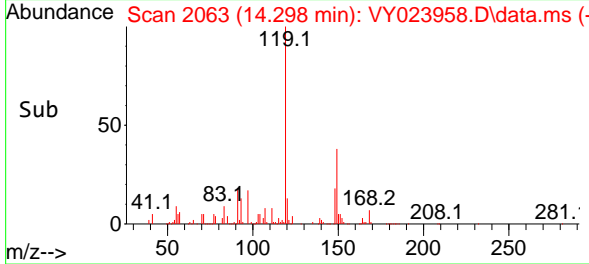
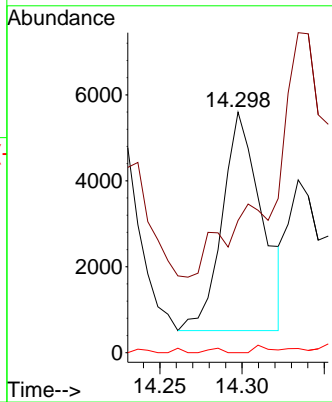


#92  
 1,2-Dibromo-3-Chloropropane  
 Concen: 9.053 ug/l  
 RT: 14.298 min Scan# 2063  
 Delta R.T. 0.024 min  
 Lab File: VY023958.D  
 Acq: 11 Dec 2025 16:28

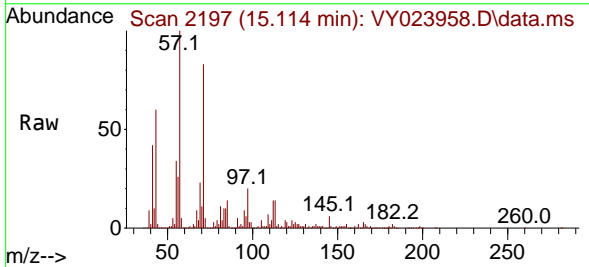
Instrument : MSVOA\_Y  
 ClientSampleId : B127(5.5-8)120925



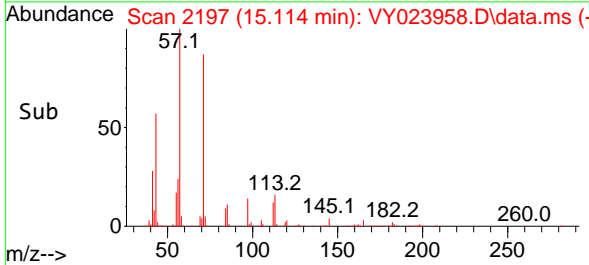
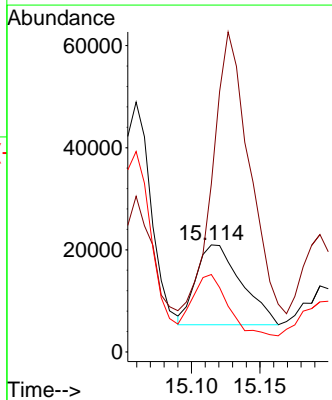
Tgt Ion: 75 Resp: 8518  
 Ion Ratio Lower Upper  
 75 100  
 155 0.0 50.2 150.7#  
 157 1.4 62.8 188.5#



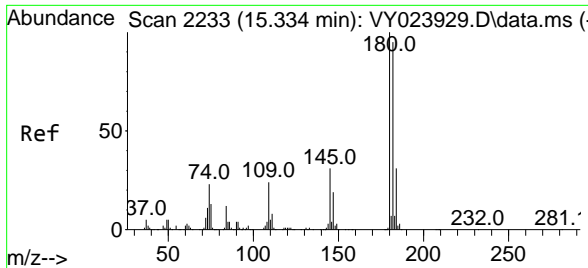
#95  
 Naphthalene  
 Concen: 2.375 ug/l  
 RT: 15.114 min Scan# 2197  
 Delta R.T. -0.030 min  
 Lab File: VY023958.D  
 Acq: 11 Dec 2025 16:28



Tgt Ion: 128 Resp: 35962  
 Ion Ratio Lower Upper  
 128 100  
 127 281.1 10.2 15.2#  
 129 59.2 8.6 12.8#

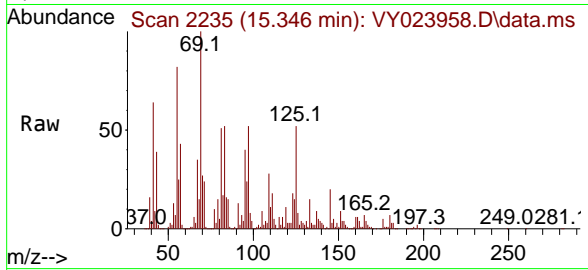






#96  
 1,2,3-Trichlorobenzene  
 Concen: 2.668 ug/l  
 RT: 15.346 min Scan# 21  
 Delta R.T. 0.012 min  
 Lab File: VY023958.D  
 Acq: 11 Dec 2025 16:28

Instrument : MSVOA\_Y  
 ClientSampleId : B127(5.5-8)120925



Tgt Ion:180 Resp: 22237

Ion	Ratio	Lower	Upper
180	100		
182	0.0	47.8	143.4#
145	0.0	15.6	46.8#

