

Data Path : Z:\voasrv\HPCHEM1\MSVOA\_Y\Data\VY121125\  
 Data File : VY023959.D  
 Acq On : 11 Dec 2025 16:52  
 Operator : SY/MD  
 Sample : Q3834-30  
 Misc : 9.40g/5.0mL/MSVOA\_Y/SOIL  
 ALS Vial : 2 Sample Multiplier: 1

Instrument :  
 MSVOA\_Y  
 ClientSampleId :  
 B127(8-10)120925

Quant Time: Dec 12 03:26:34 2025  
 Quant Method : Z:\voasrv\HPCHEM1\MSVOA\_Y\methods\82Y121025S.M  
 Quant Title : SW846 8260  
 QLast Update : Thu Dec 11 03:57:51 2025  
 Response via : Initial Calibration

Compound	R.T.	QIon	Response	Conc	Units	Dev(Min)
Internal Standards						
1) Pentafluorobenzene	7.713	168	190433	50.000	ug/l	0.00
34) 1,4-Difluorobenzene	8.616	114	261771	50.000	ug/l	0.00
63) Chlorobenzene-d5	11.420	117	194490	50.000	ug/l	0.00
72) 1,4-Dichlorobenzene-d4	13.347	152	81268	50.000	ug/l	0.00
System Monitoring Compounds						
33) 1,2-Dichloroethane-d4	8.067	65	68444	40.651	ug/l	0.00
Spiked Amount	50.000	Range	50 - 163	Recovery	=	81.300%
35) Dibromofluoromethane	7.634	113	75914	44.364	ug/l	0.00
Spiked Amount	50.000	Range	54 - 147	Recovery	=	88.720%
50) Toluene-d8	10.109	98	323048	50.707	ug/l	0.00
Spiked Amount	50.000	Range	58 - 134	Recovery	=	101.420%
62) 4-Bromofluorobenzene	12.402	95	89494	42.064	ug/l	0.00
Spiked Amount	50.000	Range	30 - 143	Recovery	=	84.120%
Target Compounds						
						Qvalue
8) Diethyl Ether	3.458	74	9706	11.195	ug/l	92
16) Acetone	3.867	43	15162	2.643	ug/l	92
17) Carbon Disulfide	4.110	76	6291	1.371	ug/l #	92
20) Methylene Chloride	4.623	84	6478	3.270	ug/l #	94
22) Diisopropyl ether	6.019	45	23297	4.627	ug/l #	94
23) Vinyl Acetate	6.031	43	13909	4.972	ug/l #	68
25) 2-Butanone	6.890	43	2986	5.739	ug/l #	71
29) Tetrahydrofuran	7.262	42	510	1.922	ug/l #	28
31) Cyclohexane	7.707	56	19921	6.899	ug/l #	74
36) 1,1-Dichloropropene	7.713	75	13038	5.597	ug/l #	54
38) Carbon Tetrachloride	7.713	117	16957	6.005	ug/l #	17
39) Methylcyclohexane	9.079	83	168058	53.996	ug/l #	29
40) Benzene	8.079	78	8368	1.180	ug/l	100
43) Isopropyl Acetate	8.189	43	22834	12.780	ug/l #	59
47) Bromodichloromethane	9.390	83	15535	6.264	ug/l #	48
48) Methyl methacrylate	9.250	41	5137	6.176	ug/l #	10
51) 4-Methyl-2-Pentanone	10.000	43	2913	3.077	ug/l #	34
52) Toluene	10.176	92	17771	3.786	ug/l	100
55) 1,1,2-Trichloroethane	10.548	97	328452	253.134	ug/l #	20
56) Ethyl methacrylate	10.451	69	164672	107.053	ug/l #	1
59) 2-Hexanone	10.731	43	208965	290.858	ug/l #	27
68) m/p-Xylenes	11.621	106	4851	1.618	ug/l #	8
69) o-Xylene	11.957	106	3818	1.362	ug/l	52
73) Isopropylbenzene	12.255	105	107864	18.161	ug/l	99
74) N-amyl acetate	12.048	43	72427	68.750	ug/l #	48
75) 1,1,2,2-Tetrachloroethane	12.481	83	16207	17.921	ug/l #	26
76) 1,2,3-Trichloropropane	12.408	75	39331	57.214	ug/l #	100
78) n-propylbenzene	12.597	91	27039	3.913	ug/l	93
79) 2-Chlorotoluene	12.731	91	4851	1.236	ug/l	79
81) trans-1,4-Dichloro-2-b...	12.249	75	1466	4.854	ug/l #	13
82) 4-Chlorotoluene	12.731	91	4505	1.115	ug/l	73
83) tert-Butylbenzene	12.999	119	16651	3.803	ug/l	91
84) 1,2,4-Trimethylbenzene	13.048	105	9039	1.926	ug/l	95
85) sec-Butylbenzene	13.176	105	70076	10.973	ug/l #	68
86) p-Isopropyltoluene	13.444	119	29955	5.541	ug/l	96
89) n-Butylbenzene	13.615	91	10606	2.243	ug/l	98

Data Path : Z:\voasrv\HPCHEM1\MSVOA\_Y\Data\VY121125\  
Data File : VY023959.D  
Acq On : 11 Dec 2025 16:52  
Operator : SY/MD  
Sample : Q3834-30  
Misc : 9.40g/5.0mL/MSVOA\_Y/SOIL  
ALS Vial : 2 Sample Multiplier: 1

Instrument :  
MSVOA\_Y  
ClientSampleId :  
B127(8-10)120925

Quant Time: Dec 12 03:26:34 2025  
Quant Method : Z:\voasrv\HPCHEM1\MSVOA\_Y\methods\82Y121025S.M  
Quant Title : SW846 8260  
QLast Update : Thu Dec 11 03:57:51 2025  
Response via : Initial Calibration

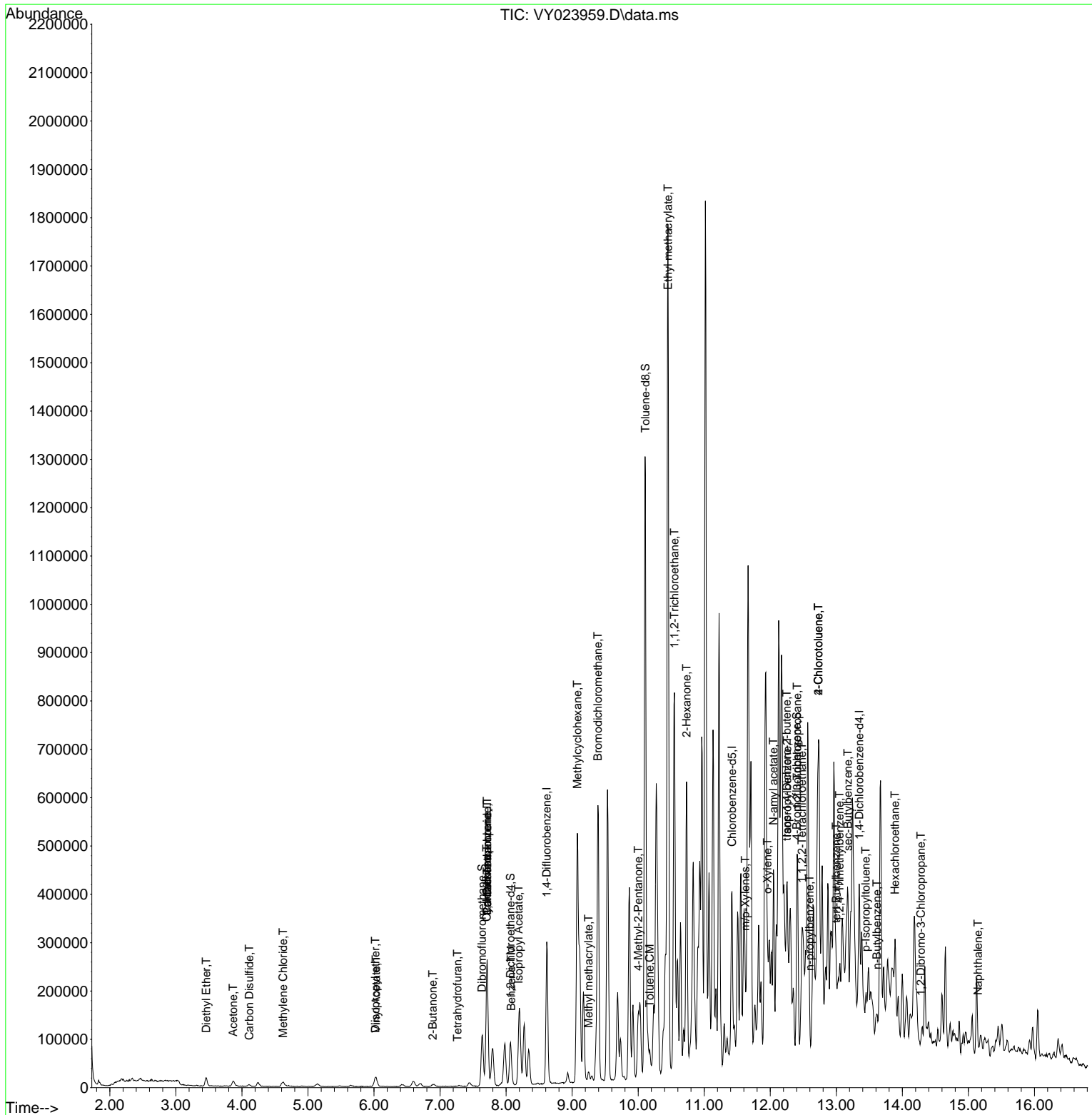
Compound	R.T.	QIon	Response	Conc	Units	Dev(Min)
90) Hexachloroethane	13.889	117	3763	3.411	ug/l #	7
92) 1,2-Dibromo-3-Chloropr...	14.279	75	162	1.157	ug/l #	12
95) Naphthalene	15.145	128	4148	1.841	ug/l #	34

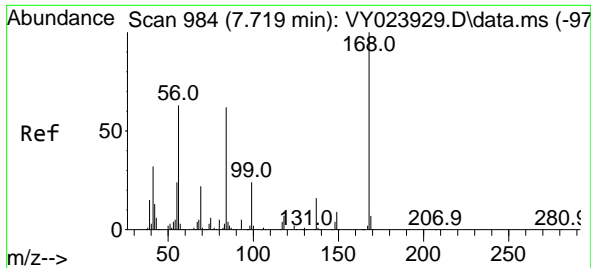
(#) = qualifier out of range (m) = manual integration (+) = signals summed

Data Path : Z:\voasrv\HPCHEM1\MSVOA\_Y\Data\VY121125\  
 Data File : VY023959.D  
 Acq On : 11 Dec 2025 16:52  
 Operator : SY/MD  
 Sample : Q3834-30  
 Misc : 9.40g/5.0mL/MSVOA\_Y/SOIL  
 ALS Vial : 2 Sample Multiplier: 1

Instrument :  
 MSVOA\_Y  
 ClientSampleId :  
 B127(8-10)120925

Quant Time: Dec 12 03:26:34 2025  
 Quant Method : Z:\voasrv\HPCHEM1\MSVOA\_Y\methods\82Y121025S.M  
 Quant Title : SW846 8260  
 QLast Update : Thu Dec 11 03:57:51 2025  
 Response via : Initial Calibration

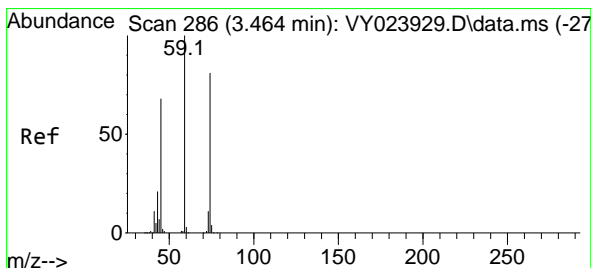
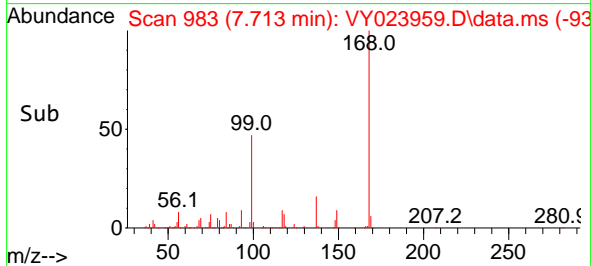
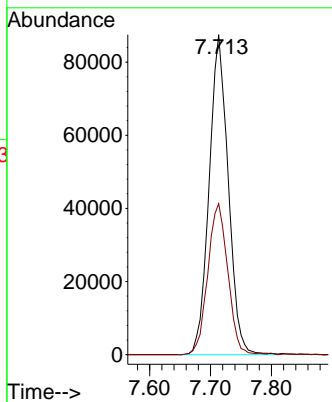
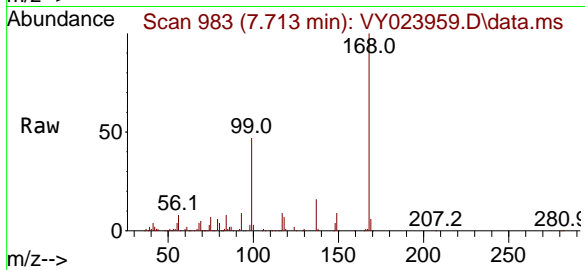




#1  
 Pentafluorobenzene  
 Concen: 50.000 ug/l  
 RT: 7.713 min Scan# 91  
 Delta R.T. -0.006 min  
 Lab File: VY023959.D  
 Acq: 11 Dec 2025 16:52

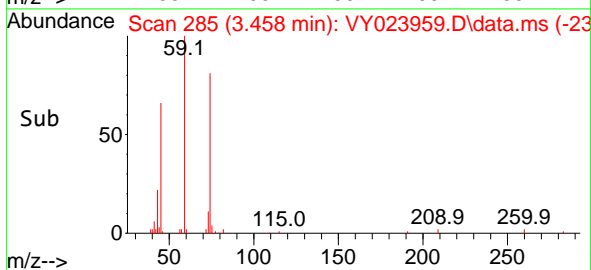
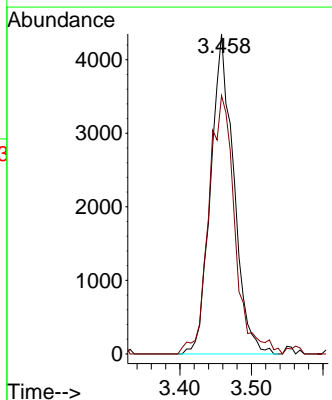
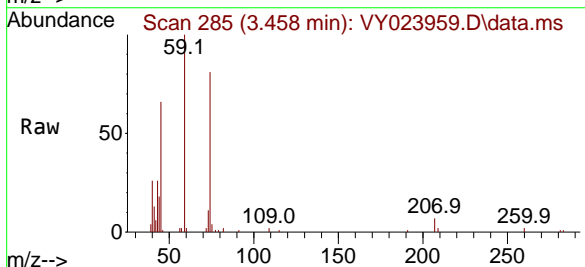
Instrument :  
 MSVOA\_Y  
 ClientSampleId :  
 B127(8-10)120925

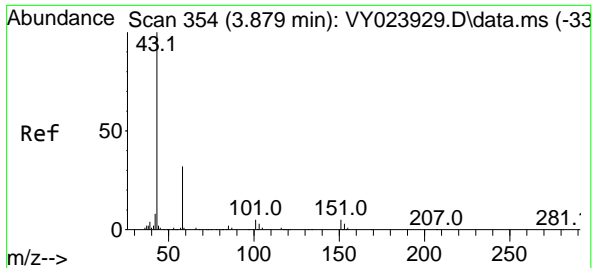
Tgt Ion:168 Resp: 190433  
 Ion Ratio Lower Upper  
 168 100  
 99 47.2 38.9 58.3



#8  
 Diethyl Ether  
 Concen: 11.195 ug/l  
 RT: 3.458 min Scan# 285  
 Delta R.T. -0.006 min  
 Lab File: VY023959.D  
 Acq: 11 Dec 2025 16:52

Tgt Ion: 74 Resp: 9706  
 Ion Ratio Lower Upper  
 74 100  
 45 91.8 42.0 126.1

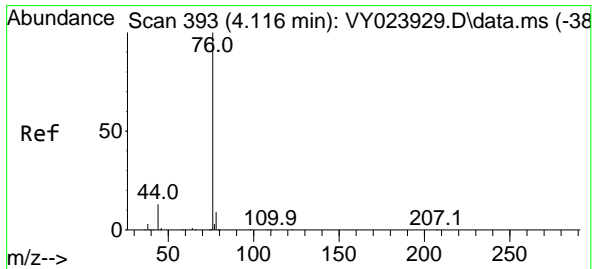
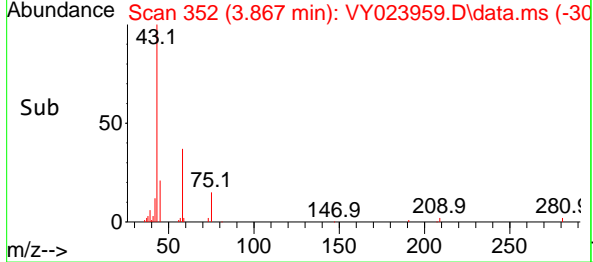
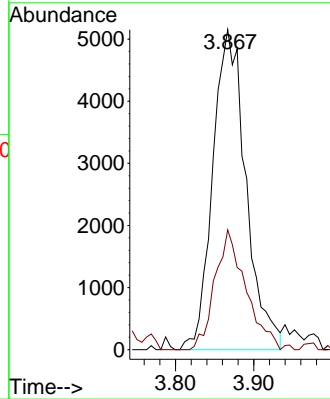
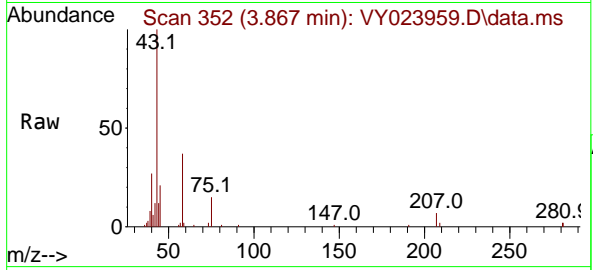




#16  
 Acetone  
 Concen: 2.643 ug/l  
 RT: 3.867 min Scan# 311  
 Delta R.T. -0.012 min  
 Lab File: VY023959.D  
 Acq: 11 Dec 2025 16:52

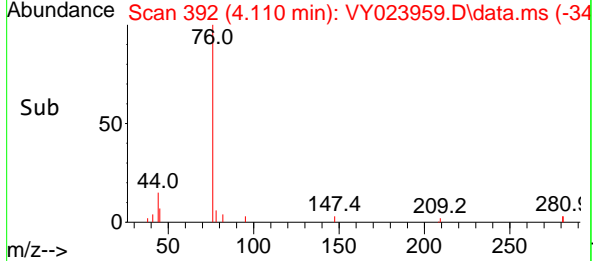
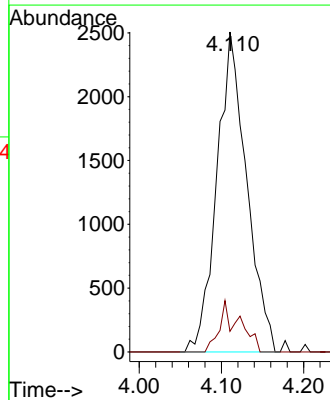
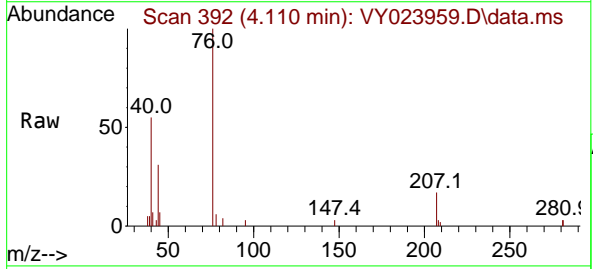
Instrument : MSVOA\_Y  
 ClientSampleId : B127(8-10)120925

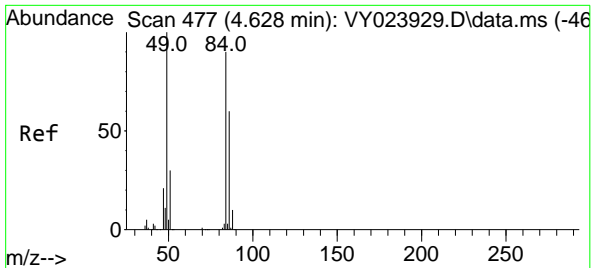
Tgt Ion: 43 Resp: 15162  
 Ion Ratio Lower Upper  
 43 100  
 58 37.5 26.4 39.6



#17  
 Carbon Disulfide  
 Concen: 1.371 ug/l  
 RT: 4.110 min Scan# 392  
 Delta R.T. -0.006 min  
 Lab File: VY023959.D  
 Acq: 11 Dec 2025 16:52

Tgt Ion: 76 Resp: 6291  
 Ion Ratio Lower Upper  
 76 100  
 78 6.5 7.4 11.2#

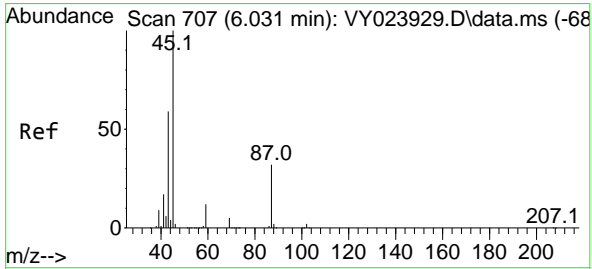
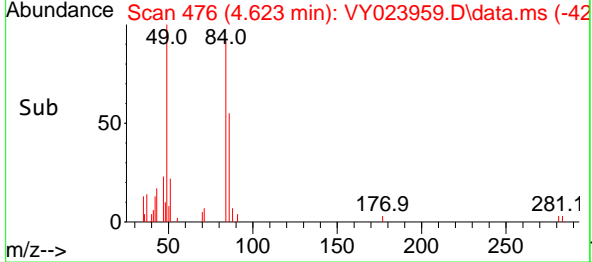
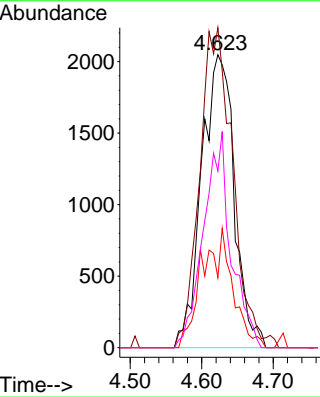
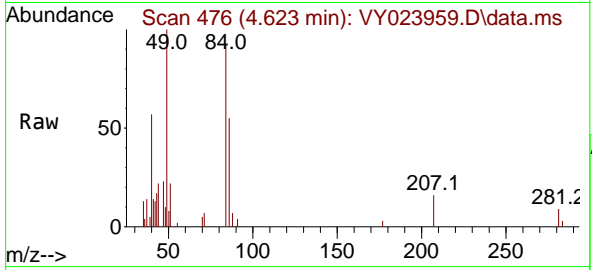




#20  
 Methylene Chloride  
 Concen: 3.270 ug/l  
 RT: 4.623 min Scan# 41  
 Delta R.T. -0.006 min  
 Lab File: VY023959.D  
 Acq: 11 Dec 2025 16:52

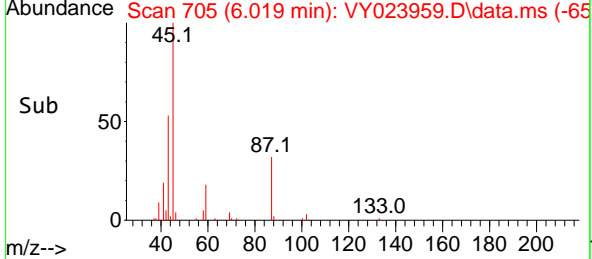
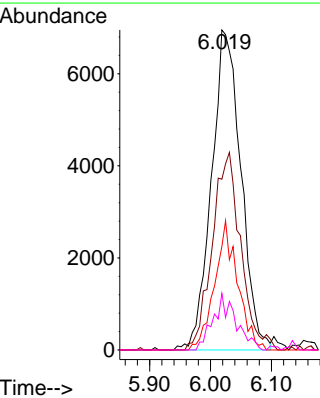
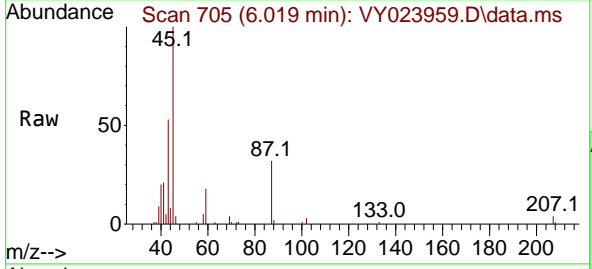
Instrument : MSVOA\_Y  
 ClientSampleId : B127(8-10)120925

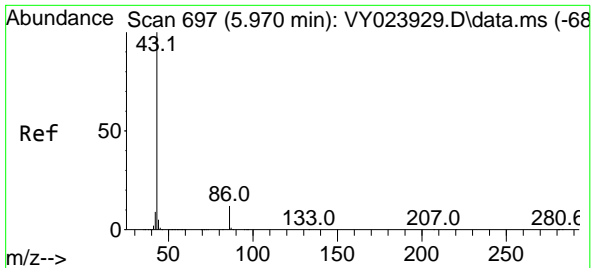
Tgt Ion	Resp	Lower	Upper
84	6478		
49	109.2	89.1	133.7
51	23.9	26.6	39.8#
86	60.3	53.4	80.0



#22  
 Diisopropyl ether  
 Concen: 4.627 ug/l  
 RT: 6.019 min Scan# 705  
 Delta R.T. -0.012 min  
 Lab File: VY023959.D  
 Acq: 11 Dec 2025 16:52

Tgt Ion	Resp	Lower	Upper
45	23297		
43	53.4	47.0	70.6
87	32.4	26.0	39.0
59	17.6	9.4	14.2#

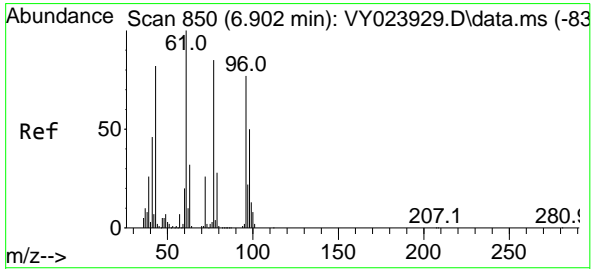
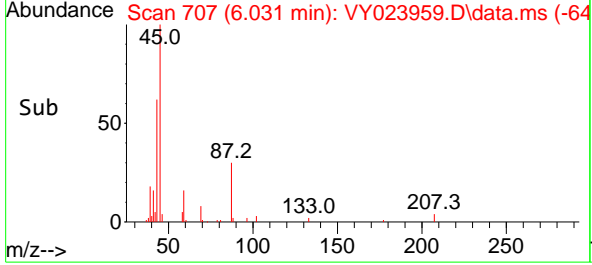
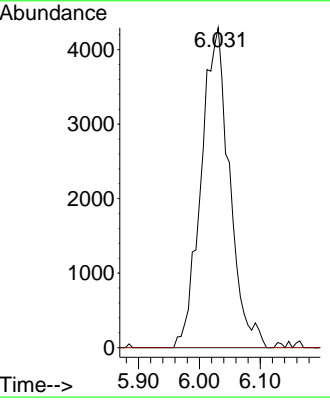
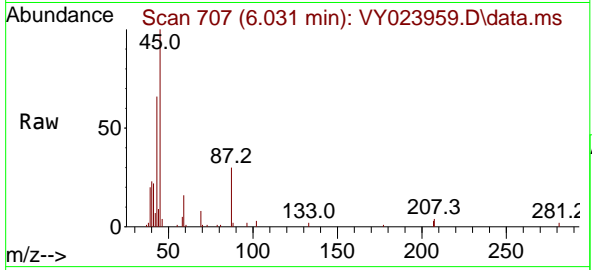




#23  
 Vinyl Acetate  
 Concen: 4.972 ug/l  
 RT: 6.031 min Scan# 707  
 Delta R.T. 0.061 min  
 Lab File: VY023959.D  
 Acq: 11 Dec 2025 16:52

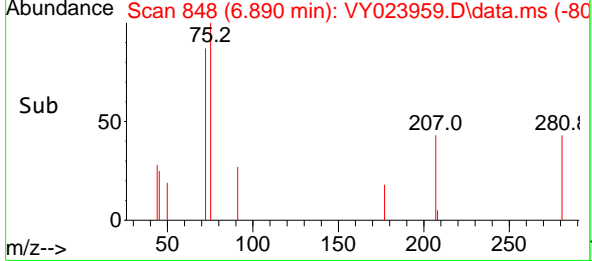
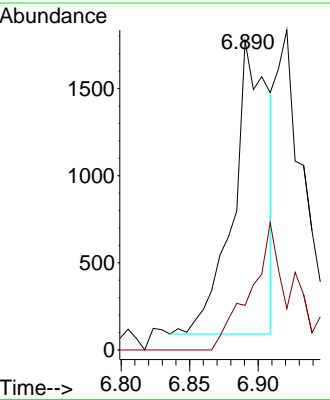
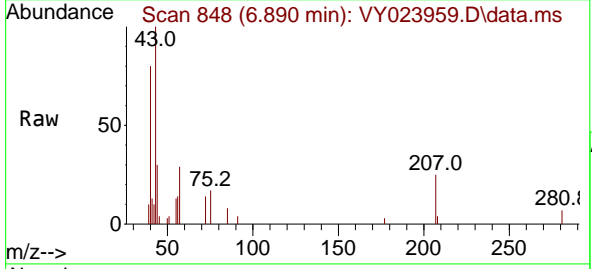
Instrument : MSVOA\_Y  
 ClientSampleId : B127(8-10)120925

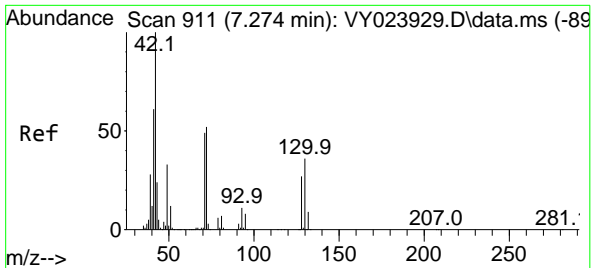
Tgt Ion: 43 Resp: 13909  
 Ion Ratio Lower Upper  
 43 100  
 86 0.0 9.9 14.9#



#25  
 2-Butanone  
 Concen: 5.739 ug/l  
 RT: 6.890 min Scan# 848  
 Delta R.T. -0.012 min  
 Lab File: VY023959.D  
 Acq: 11 Dec 2025 16:52

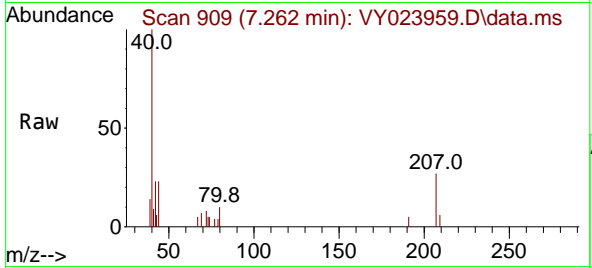
Tgt Ion: 43 Resp: 2986  
 Ion Ratio Lower Upper  
 43 100  
 72 15.2 25.0 37.6#



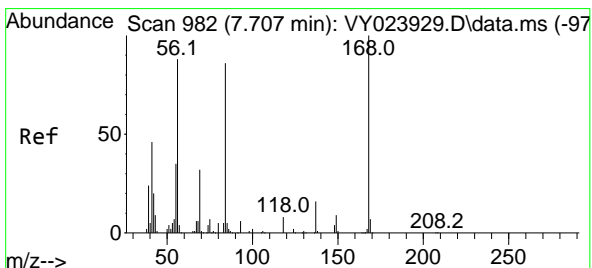
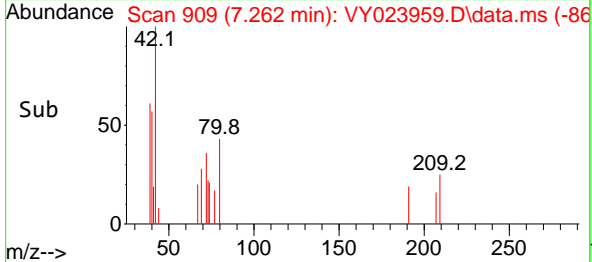
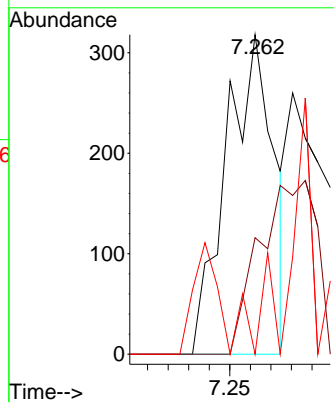


#29  
 Tetrahydrofuran  
 Concen: 1.922 ug/l  
 RT: 7.262 min Scan# 909  
 Delta R.T. -0.012 min  
 Lab File: VY023959.D  
 Acq: 11 Dec 2025 16:52

Instrument : MSVOA\_Y  
 ClientSampleId : B127(8-10)120925

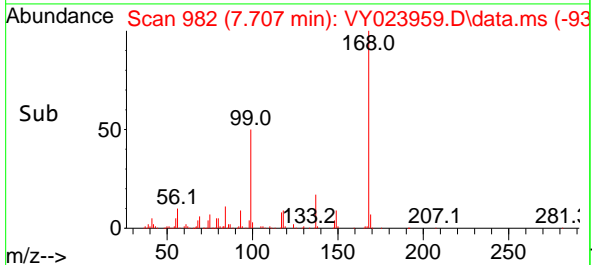
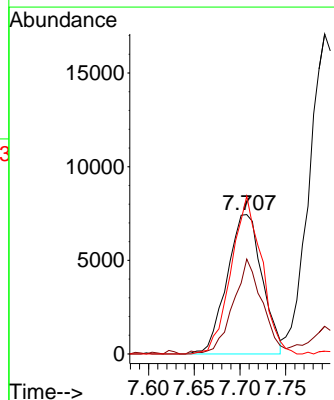
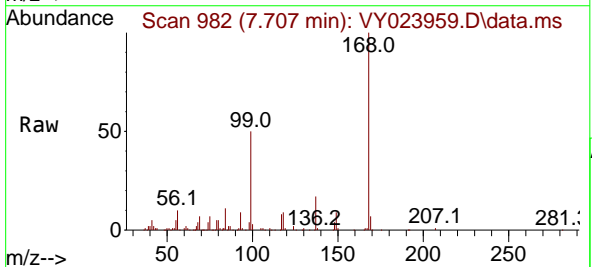


Tgt Ion: 42 Resp: 510  
 Ion Ratio Lower Upper  
 42 100  
 72 0.0 40.0 60.0#  
 71 0.0 37.7 56.5#

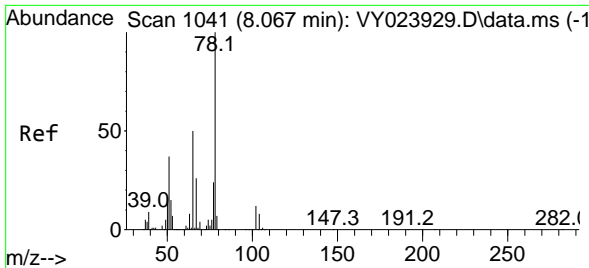


#31  
 Cyclohexane  
 Concen: 6.899 ug/l  
 RT: 7.707 min Scan# 982  
 Delta R.T. 0.000 min  
 Lab File: VY023959.D  
 Acq: 11 Dec 2025 16:52

Tgt Ion: 56 Resp: 19921  
 Ion Ratio Lower Upper  
 56 100  
 69 68.1 29.1 43.7#  
 84 113.3 77.8 116.8

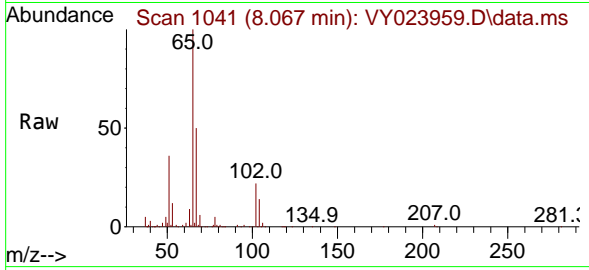




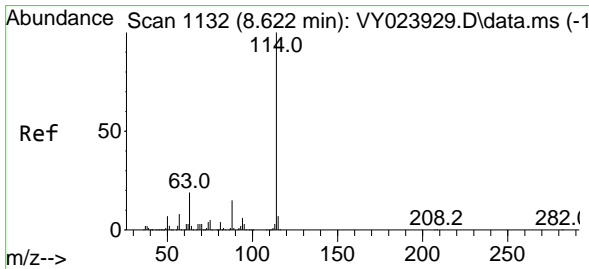
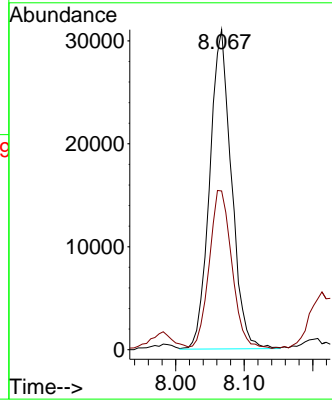
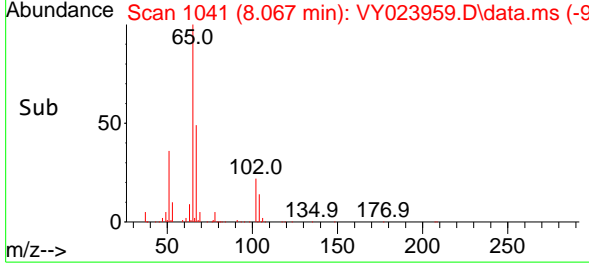


#33  
 1,2-Dichloroethane-d4  
 Concen: 40.651 ug/l  
 RT: 8.067 min Scan# 1041  
 Delta R.T. 0.000 min  
 Lab File: VY023959.D  
 Acq: 11 Dec 2025 16:52

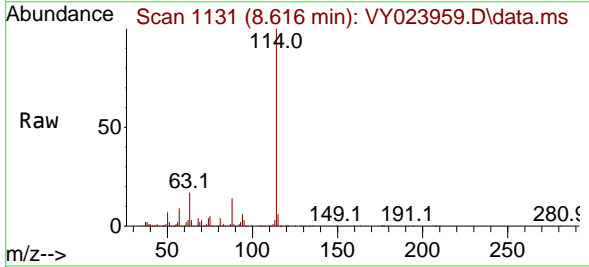
Instrument : MSVOA\_Y  
 ClientSampleId : B127(8-10)120925



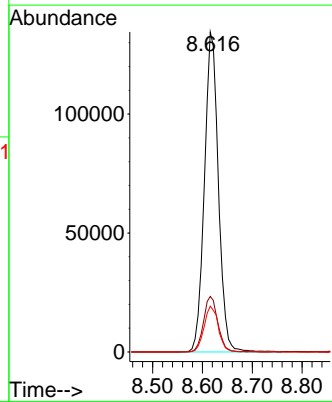
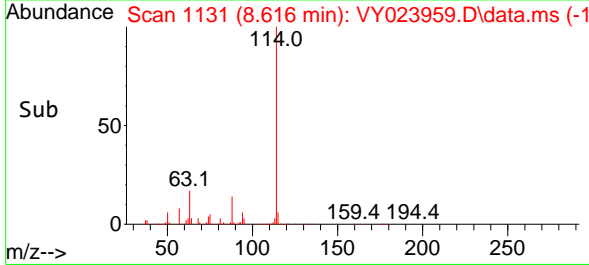
Tgt Ion: 65 Resp: 68444  
 Ion Ratio Lower Upper  
 65 100  
 67 51.4 0.0 106.2

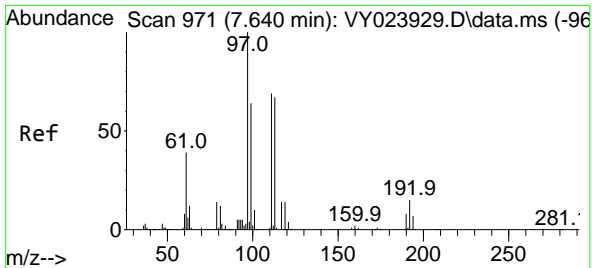


#34  
 1,4-Difluorobenzene  
 Concen: 50.000 ug/l  
 RT: 8.616 min Scan# 1131  
 Delta R.T. -0.006 min  
 Lab File: VY023959.D  
 Acq: 11 Dec 2025 16:52



Tgt Ion: 114 Resp: 261771  
 Ion Ratio Lower Upper  
 114 100  
 63 17.4 0.0 37.2  
 88 14.3 0.0 29.4

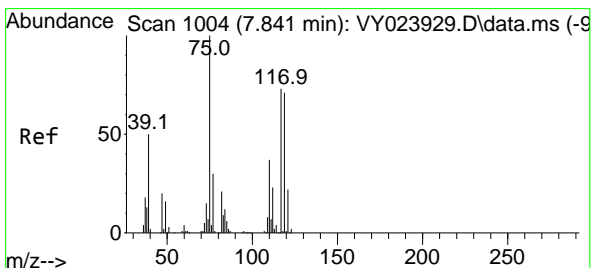
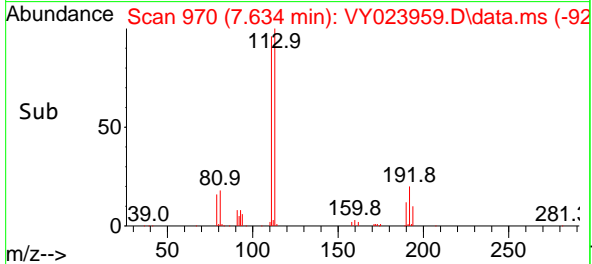
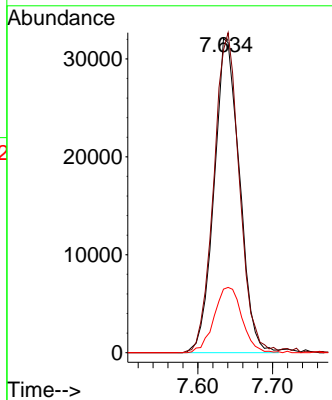
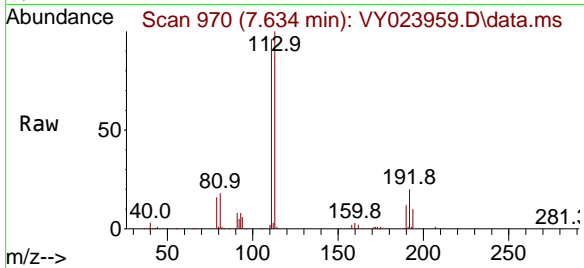




#35  
 Dibromofluoromethane  
 Concen: 44.364 ug/l  
 RT: 7.634 min Scan# 911  
 Delta R.T. -0.006 min  
 Lab File: VY023959.D  
 Acq: 11 Dec 2025 16:52

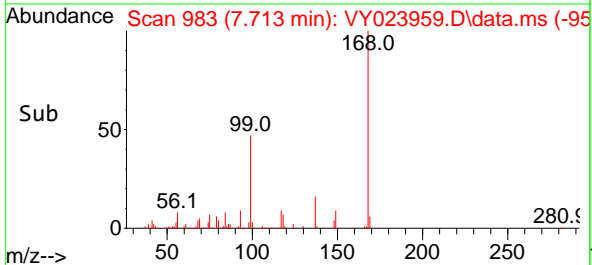
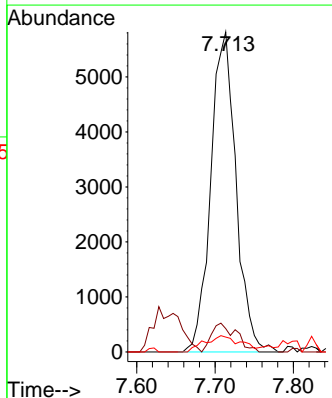
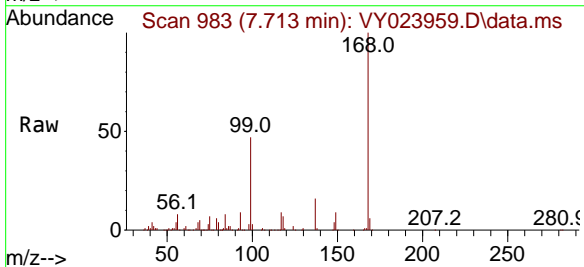
Instrument : MSVOA\_Y  
 ClientSampleId : B127(8-10)120925

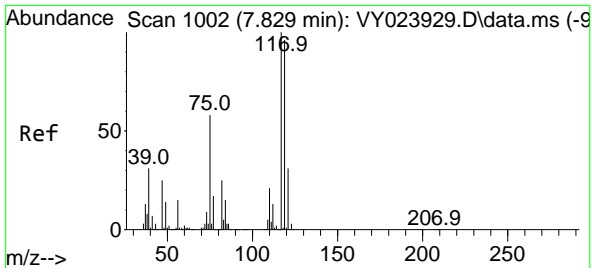
Tgt Ion	Resp	Lower	Upper
113	75914		
113	100		
111	102.6	82.4	123.6
192	22.9	17.9	26.9



#36  
 1,1-Dichloropropene  
 Concen: 5.597 ug/l  
 RT: 7.713 min Scan# 983  
 Delta R.T. -0.128 min  
 Lab File: VY023959.D  
 Acq: 11 Dec 2025 16:52

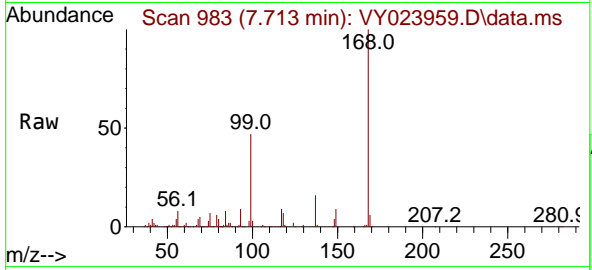
Tgt Ion	Resp	Lower	Upper
75	13038		
75	100		
110	8.8	19.2	57.6#
77	7.3	24.4	36.6#





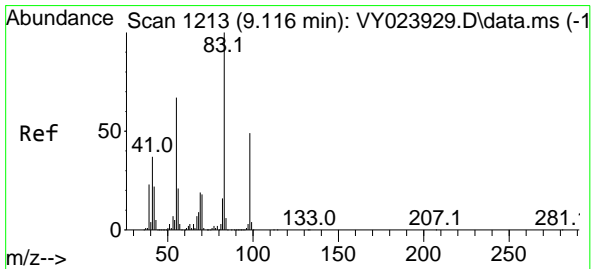
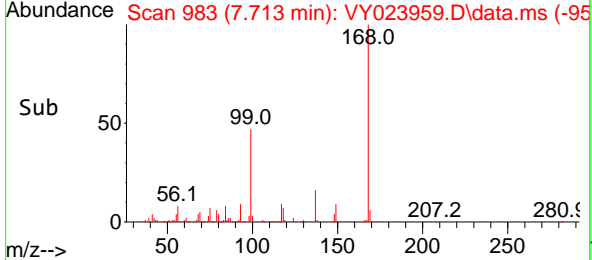
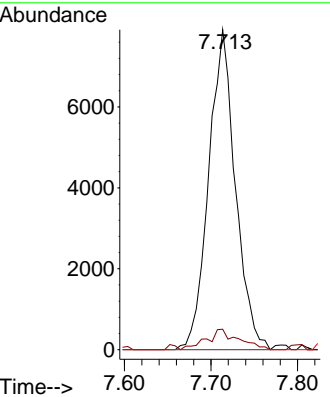
#38  
 Carbon Tetrachloride  
 Concen: 6.005 ug/l  
 RT: 7.713 min Scan# 91  
 Delta R.T. -0.116 min  
 Lab File: VY023959.D  
 Acq: 11 Dec 2025 16:52

Instrument : MSVOA\_Y  
 ClientSampleId : B127(8-10)120925

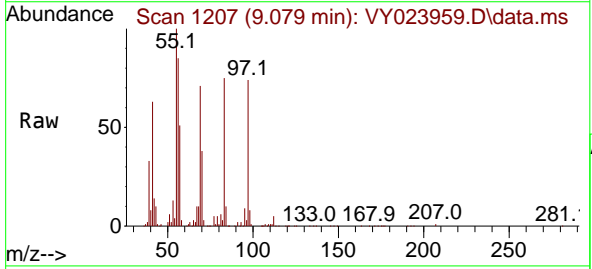


Tgt Ion: 117 Resp: 16957

Ion	Ratio	Lower	Upper
117	100		
119	6.4	76.6	114.8#
121	0.0	24.8	37.2#

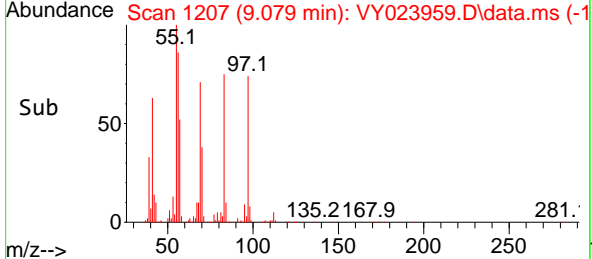
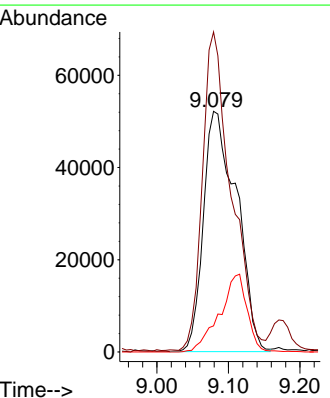


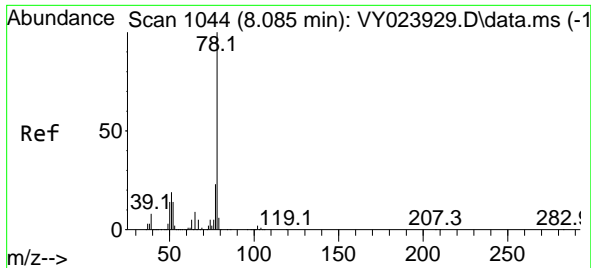
#39  
 Methylcyclohexane  
 Concen: 53.996 ug/l  
 RT: 9.079 min Scan# 1207  
 Delta R.T. -0.036 min  
 Lab File: VY023959.D  
 Acq: 11 Dec 2025 16:52



Tgt Ion: 83 Resp: 168058

Ion	Ratio	Lower	Upper
83	100		
55	132.3	53.4	80.0#
98	10.8	39.2	58.8#

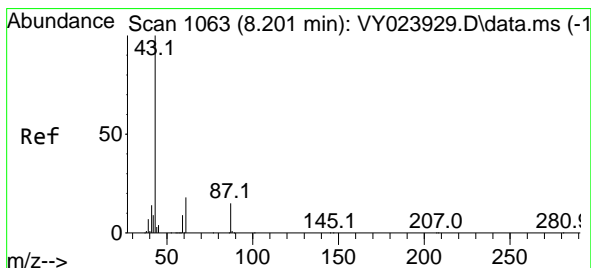
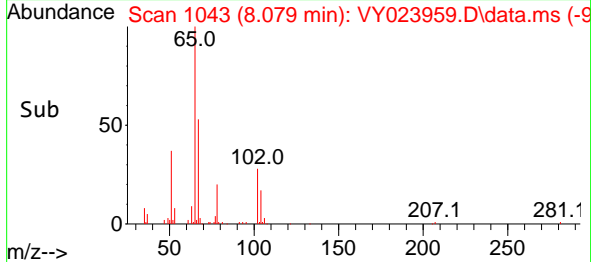
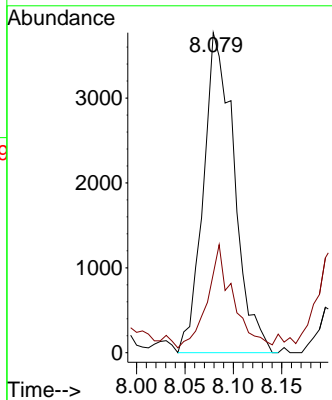
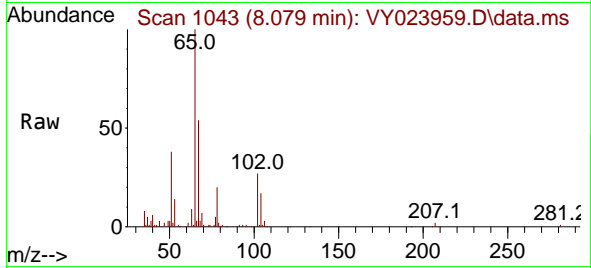




#40  
Benzene  
Concen: 1.180 ug/l  
RT: 8.079 min Scan# 1043  
Delta R.T. -0.006 min  
Lab File: VY023959.D  
Acq: 11 Dec 2025 16:52

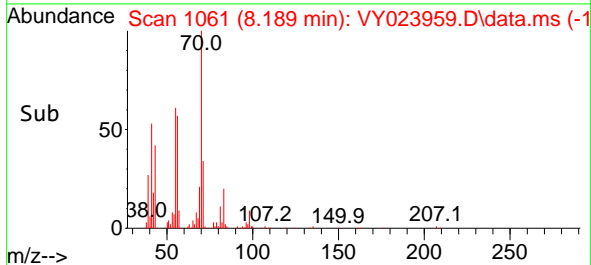
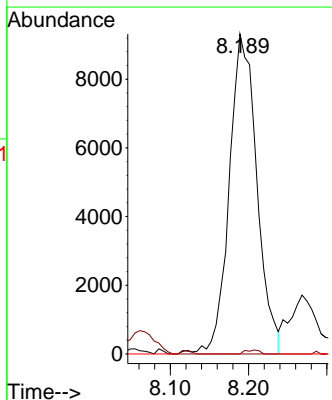
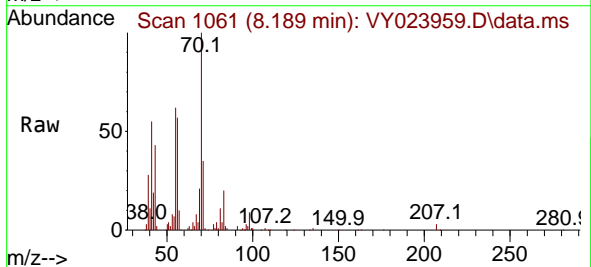
Instrument : MSVOA\_Y  
ClientSampleId : B127(8-10)120925

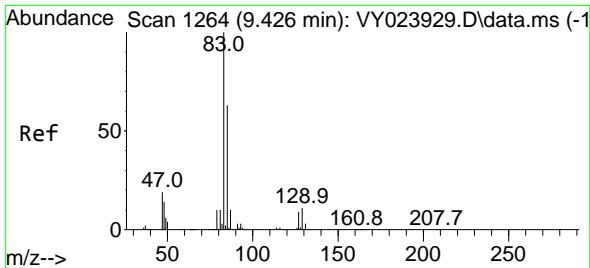
Tgt Ion: 78 Resp: 8368  
Ion Ratio Lower Upper  
78 100  
77 23.1 18.3 27.5



#43  
Isopropyl Acetate  
Concen: 12.780 ug/l  
RT: 8.189 min Scan# 1061  
Delta R.T. -0.012 min  
Lab File: VY023959.D  
Acq: 11 Dec 2025 16:52

Tgt Ion: 43 Resp: 22834  
Ion Ratio Lower Upper  
43 100  
61 0.6 17.4 26.2#  
87 0.0 12.3 18.5#

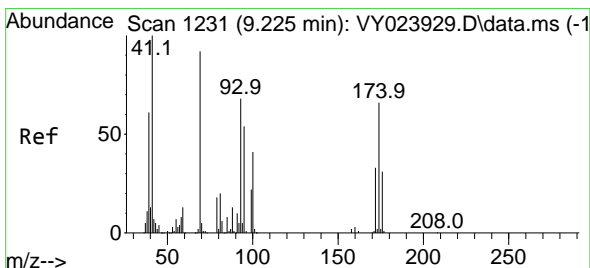
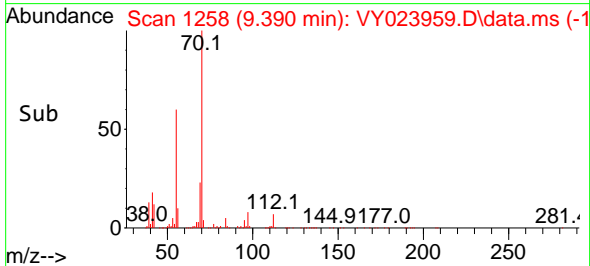
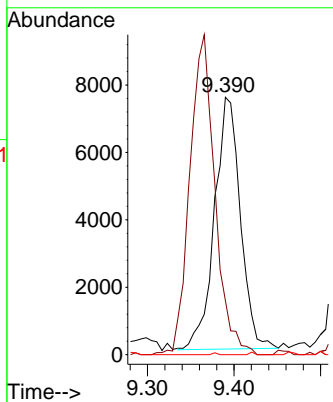
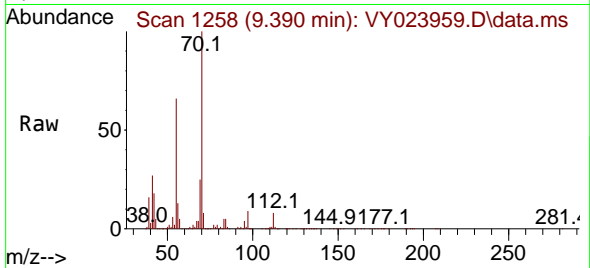




#47  
 Bromodichloromethane  
 Concen: 6.264 ug/l  
 RT: 9.390 min Scan# 11  
 Delta R.T. -0.036 min  
 Lab File: VY023959.D  
 Acq: 11 Dec 2025 16:52

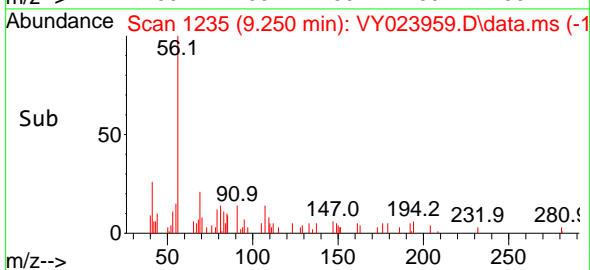
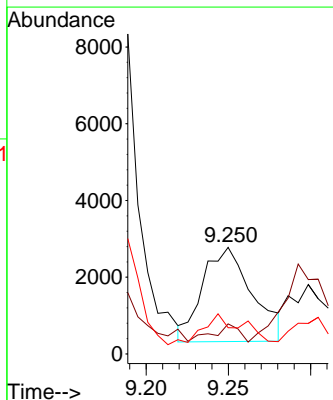
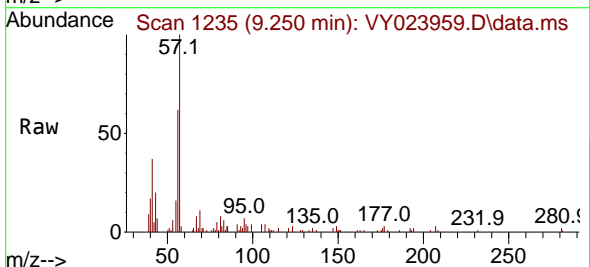
Instrument : MSVOA\_Y  
 ClientSampleId : B127(8-10)120925

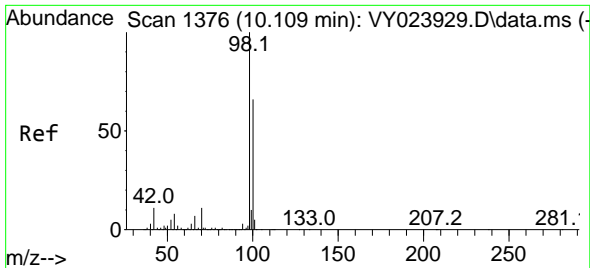
Tgt Ion	Resp	Lower	Upper
83	15535		
85	19.8	50.7	76.1#
127	0.0	7.0	10.4#



#48  
 Methyl methacrylate  
 Concen: 6.176 ug/l  
 RT: 9.250 min Scan# 1235  
 Delta R.T. 0.025 min  
 Lab File: VY023959.D  
 Acq: 11 Dec 2025 16:52

Tgt Ion	Resp	Lower	Upper
41	5137		
69	0.0	74.7	112.1#
39	0.0	47.4	71.2#

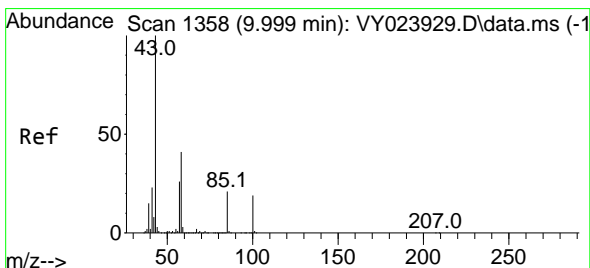
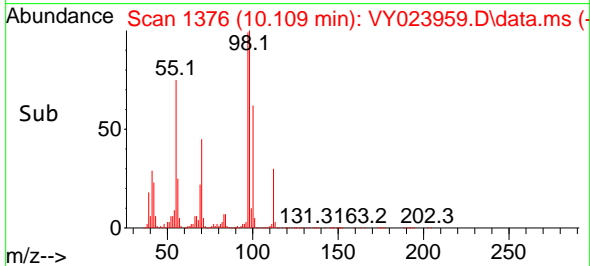
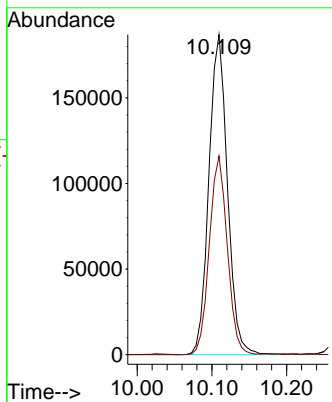
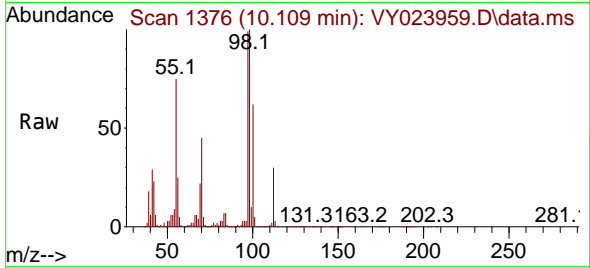




#50  
 Toluene-d8  
 Concen: 50.707 ug/l  
 RT: 10.109 min Scan# 11  
 Delta R.T. 0.000 min  
 Lab File: VY023959.D  
 Acq: 11 Dec 2025 16:52

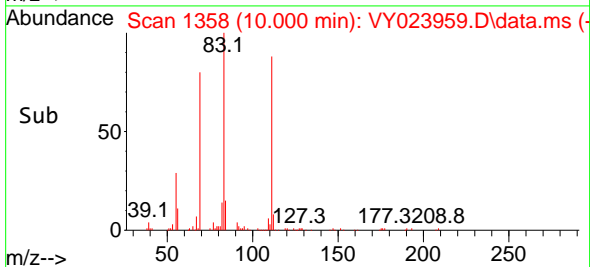
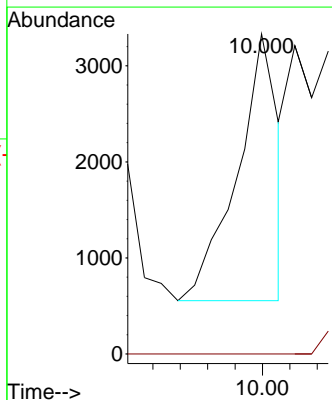
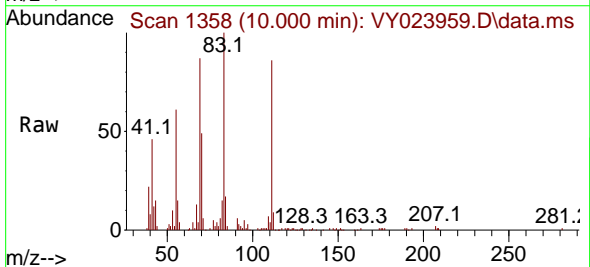
Instrument :  
 MSVOA\_Y  
 ClientSampleId :  
 B127(8-10)120925

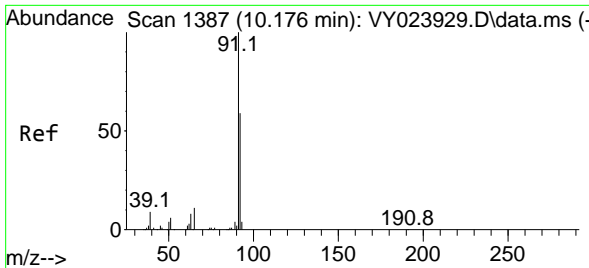
Tgt Ion: 98 Resp: 323048  
 Ion Ratio Lower Upper  
 98 100  
 100 60.1 52.8 79.2



#51  
 4-Methyl-2-Pentanone  
 Concen: 3.077 ug/l  
 RT: 10.000 min Scan# 1358  
 Delta R.T. 0.000 min  
 Lab File: VY023959.D  
 Acq: 11 Dec 2025 16:52

Tgt Ion: 43 Resp: 2913  
 Ion Ratio Lower Upper  
 43 100  
 58 0.0 33.1 49.7#

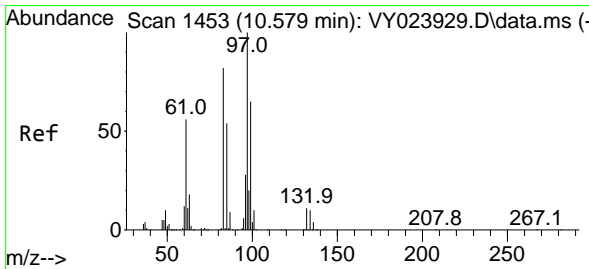
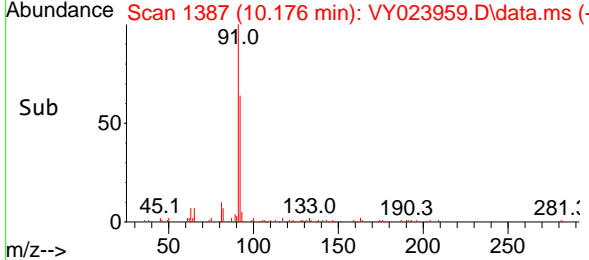
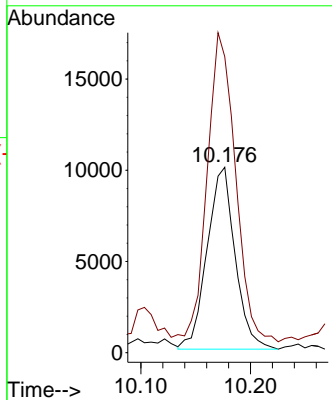
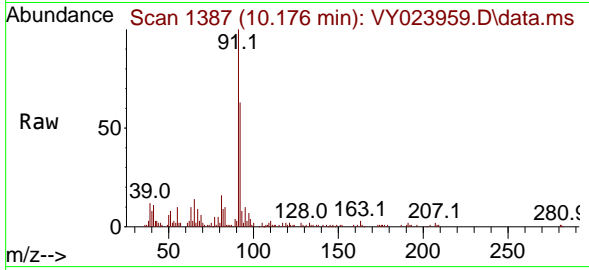




#52  
 Toluene  
 Concen: 3.786 ug/l  
 RT: 10.176 min Scan# 11  
 Delta R.T. 0.000 min  
 Lab File: VY023959.D  
 Acq: 11 Dec 2025 16:52

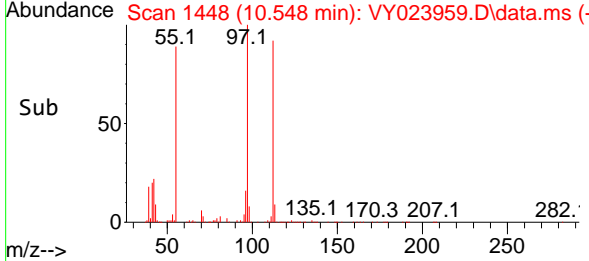
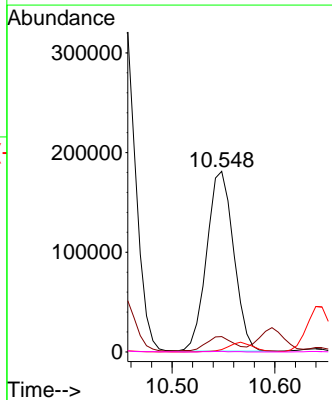
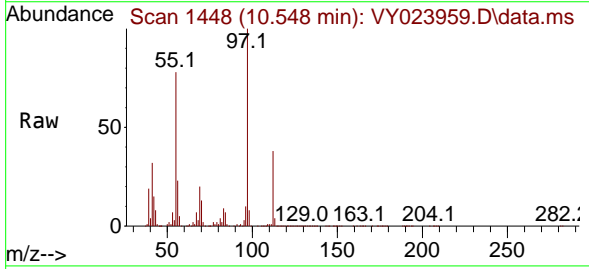
Instrument : MSVOA\_Y  
 ClientSampleId : B127(8-10)120925

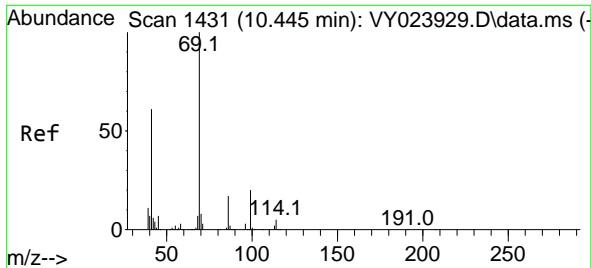
Tgt Ion: 92 Resp: 17771  
 Ion Ratio Lower Upper  
 92 100  
 91 169.2 135.8 203.6



#55  
 1,1,2-Trichloroethane  
 Concen: 253.134 ug/l  
 RT: 10.548 min Scan# 1448  
 Delta R.T. -0.030 min  
 Lab File: VY023959.D  
 Acq: 11 Dec 2025 16:52

Tgt Ion: 97 Resp: 328452  
 Ion Ratio Lower Upper  
 97 100  
 83 7.9 65.8 98.6#  
 85 1.3 43.1 64.7#  
 99 0.3 51.6 77.4#



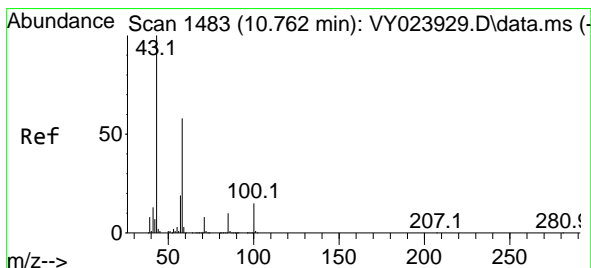
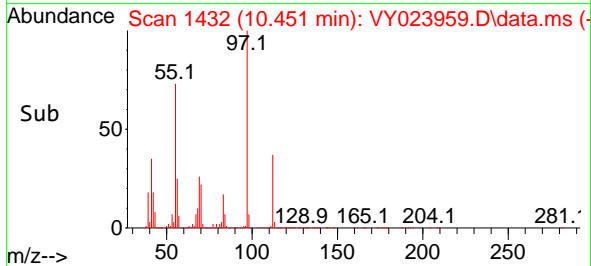
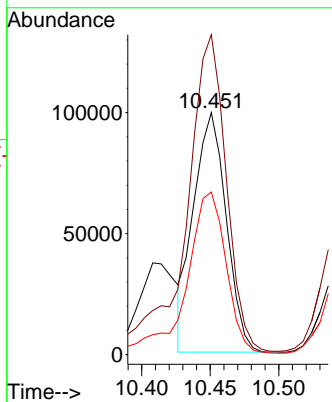
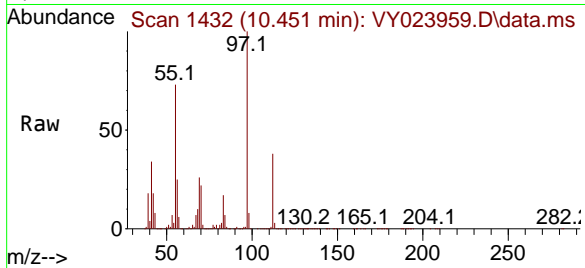


#56  
 Ethyl methacrylate  
 Concen: 107.053 ug/l  
 RT: 10.451 min Scan# 1431  
 Delta R.T. 0.006 min  
 Lab File: VY023959.D  
 Acq: 11 Dec 2025 16:52

Instrument :  
 MSVOA\_Y  
 ClientSampleId :  
 B127(8-10)120925

Tgt Ion: 69 Resp: 164672

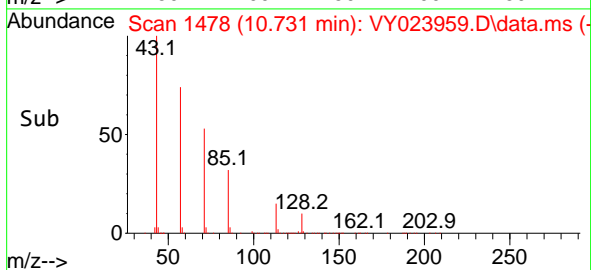
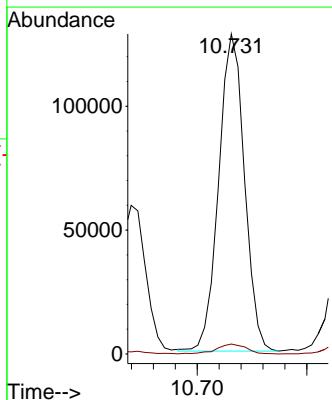
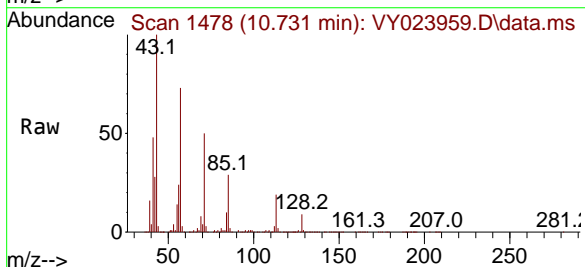
Ion	Ratio	Lower	Upper
69	100		
41	165.3	49.0	73.4#
39	84.2	29.1	43.7#



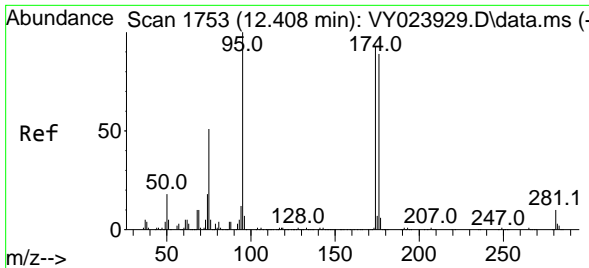
#59  
 2-Hexanone  
 Concen: 290.858 ug/l  
 RT: 10.731 min Scan# 1478  
 Delta R.T. -0.030 min  
 Lab File: VY023959.D  
 Acq: 11 Dec 2025 16:52

Tgt Ion: 43 Resp: 208965

Ion	Ratio	Lower	Upper
43	100		
58	3.6	29.0	87.0#



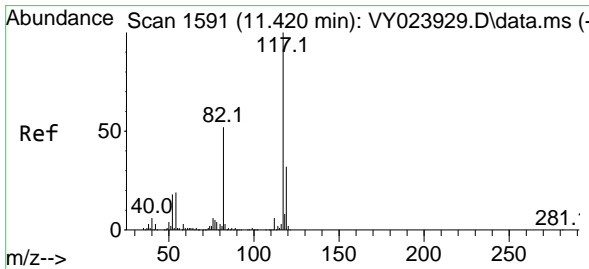
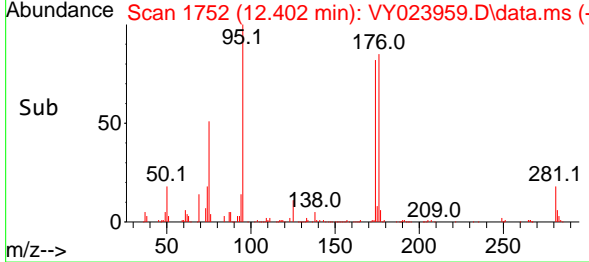
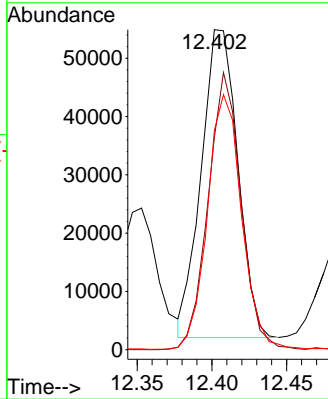
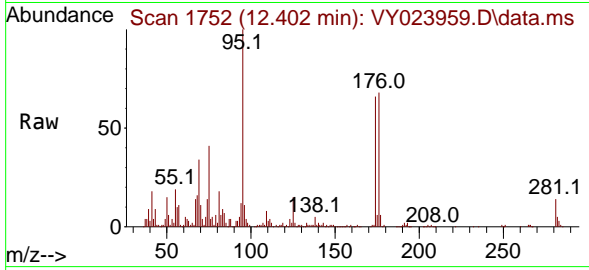




#62  
 4-Bromofluorobenzene  
 Concen: 42.064 ug/l  
 RT: 12.402 min Scan# 1752  
 Delta R.T. -0.006 min  
 Lab File: VY023959.D  
 Acq: 11 Dec 2025 16:52

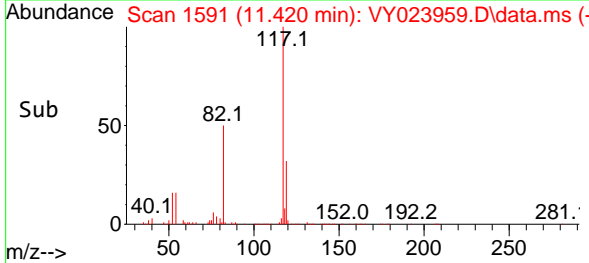
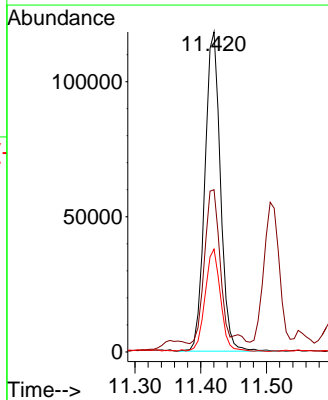
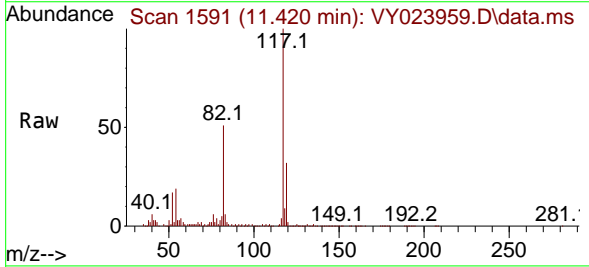
Instrument : MSVOA\_Y  
 ClientSampleId : B127(8-10)120925

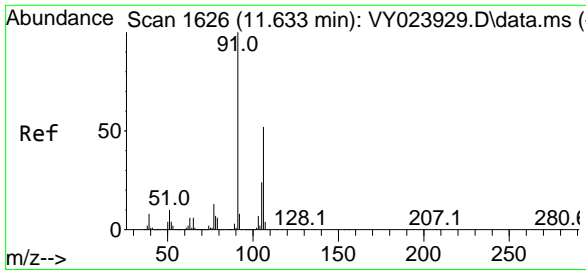
Tgt Ion	Resp	Ion Ratio	Lower	Upper
95	89494	100		
174	81.3	0.0	187.4	
176	78.4	0.0	179.6	



#63  
 Chlorobenzene-d5  
 Concen: 50.000 ug/l  
 RT: 11.420 min Scan# 1591  
 Delta R.T. 0.000 min  
 Lab File: VY023959.D  
 Acq: 11 Dec 2025 16:52

Tgt Ion	Resp	Ion Ratio	Lower	Upper
117	194490	100		
82	47.4	41.4	62.2	
119	32.0	25.5	38.3	

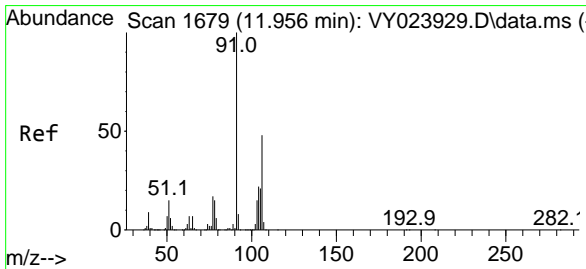
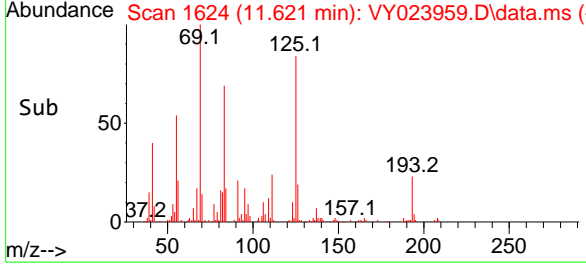
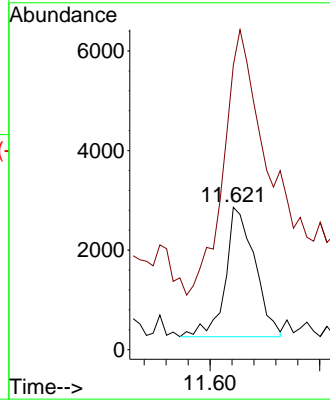
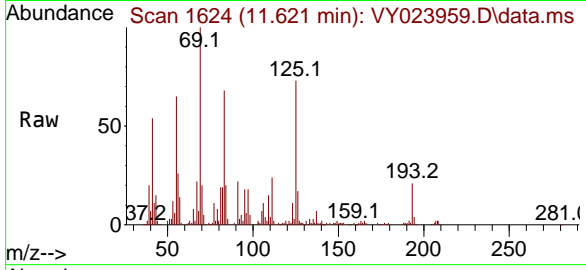




#68  
 m/p-Xylenes  
 Concen: 1.618 ug/l  
 RT: 11.621 min Scan# 1624  
 Delta R.T. -0.012 min  
 Lab File: VY023959.D  
 Acq: 11 Dec 2025 16:52

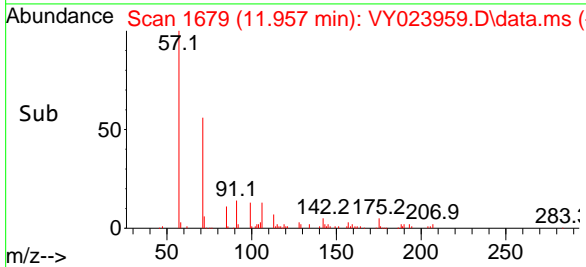
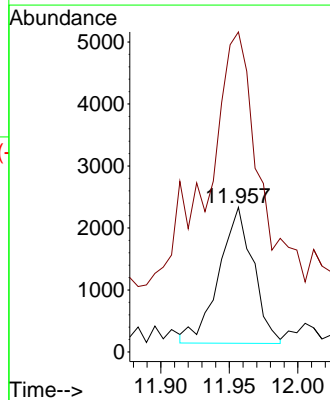
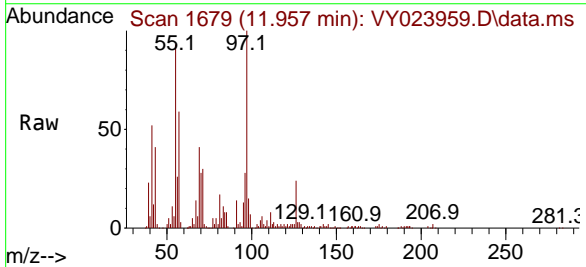
Instrument : MSVOA\_Y  
 ClientSampleId : B127(8-10)120925

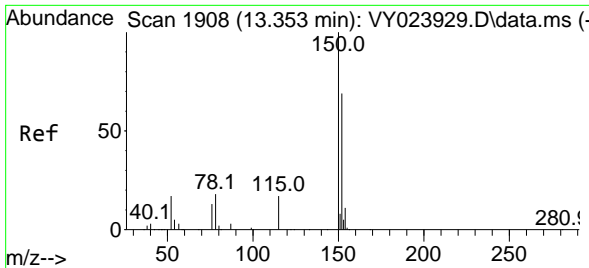
Tgt Ion:106 Resp: 4851  
 Ion Ratio Lower Upper  
 106 100  
 91 329.9 155.0 232.6#



#69  
 o-Xylene  
 Concen: 1.362 ug/l  
 RT: 11.957 min Scan# 1679  
 Delta R.T. 0.000 min  
 Lab File: VY023959.D  
 Acq: 11 Dec 2025 16:52

Tgt Ion:106 Resp: 3818  
 Ion Ratio Lower Upper  
 106 100  
 91 277.3 102.1 306.1

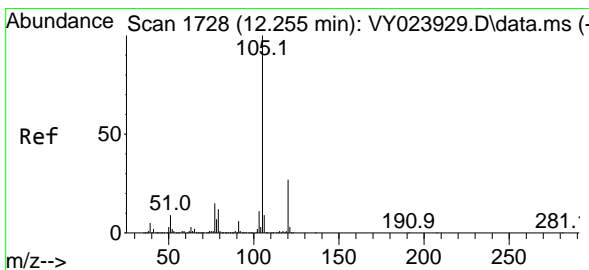
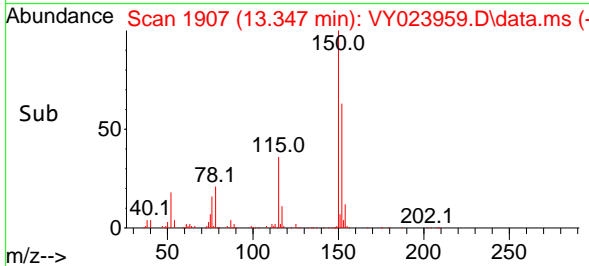
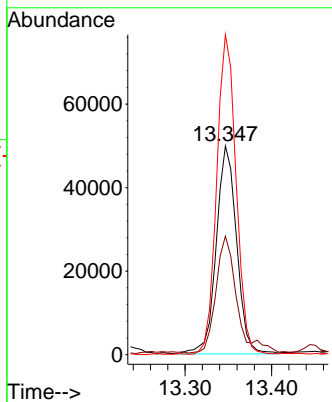
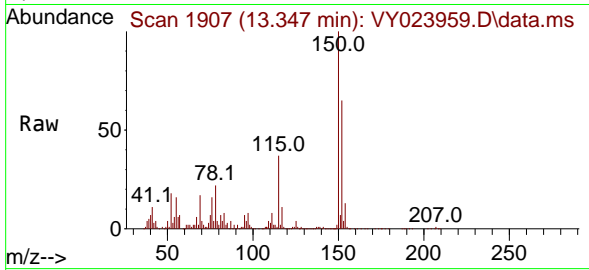




#72  
 1,4-Dichlorobenzene-d4  
 Concen: 50.000 ug/l  
 RT: 13.347 min Scan# 1907  
 Delta R.T. -0.006 min  
 Lab File: VY023959.D  
 Acq: 11 Dec 2025 16:52

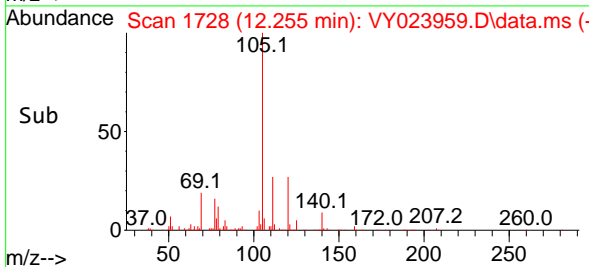
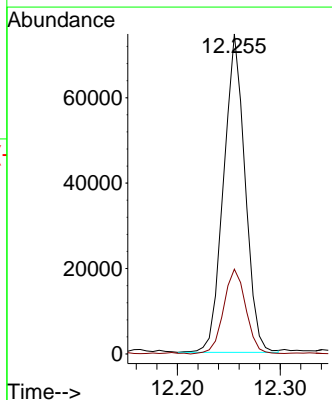
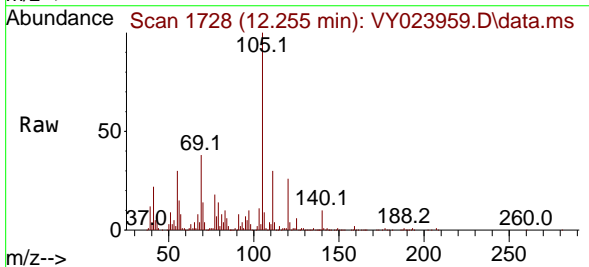
Instrument : MSVOA\_Y  
 ClientSampleId : B127(8-10)120925

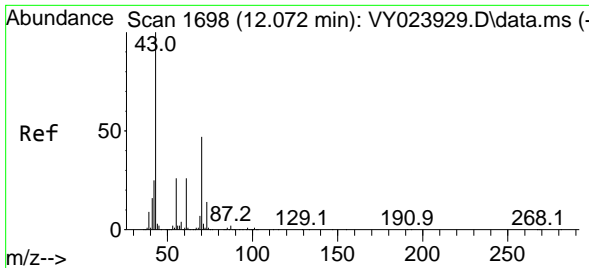
Tgt Ion	Resp	Lower	Upper
152	81268	100	
115	57.5	27.3	81.9
150	145.8	0.0	347.6



#73  
 Isopropylbenzene  
 Concen: 18.161 ug/l  
 RT: 12.255 min Scan# 1728  
 Delta R.T. 0.000 min  
 Lab File: VY023959.D  
 Acq: 11 Dec 2025 16:52

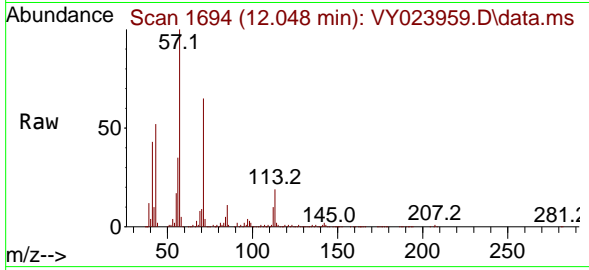
Tgt Ion	Resp	Lower	Upper
105	107864	100	
120	27.7	13.7	41.0





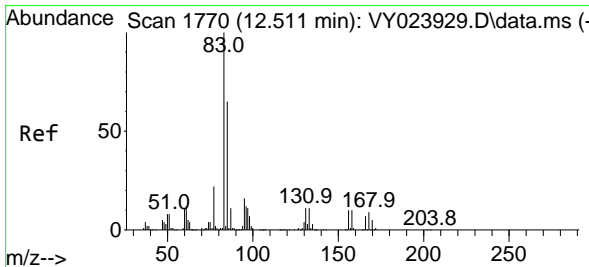
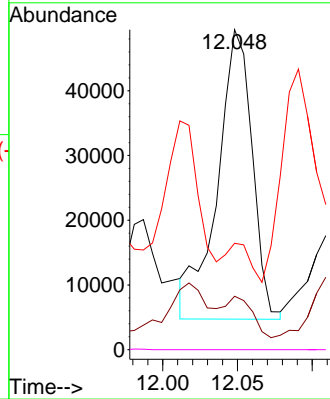
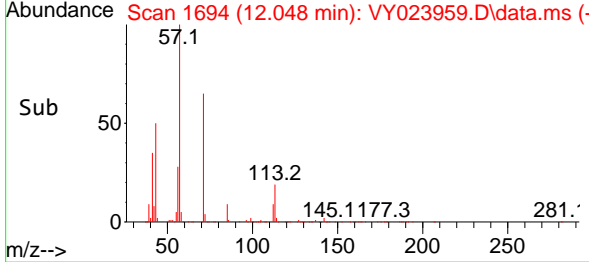
#74  
 N-amy1 acetate  
 Concen: 68.750 ug/l  
 RT: 12.048 min Scan# 1765  
 Delta R.T. -0.024 min  
 Lab File: VY023959.D  
 Acq: 11 Dec 2025 16:52

Instrument : MSVOA\_Y  
 ClientSampleId : B127(8-10)120925

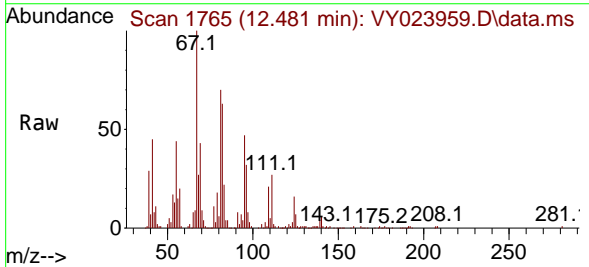


Tgt Ion: 43 Resp: 72427

Ion	Ratio	Lower	Upper
43	100		
70	11.1	37.4	56.0#
55	0.0	21.6	32.4#
61	0.0	20.7	31.1#

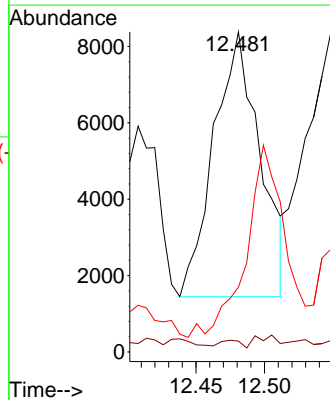
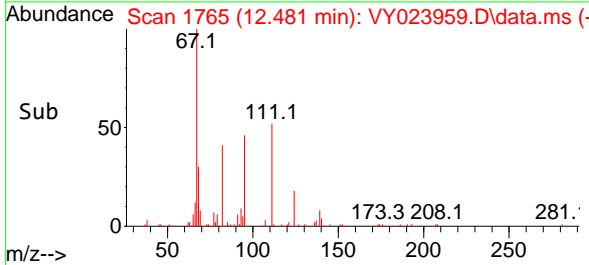


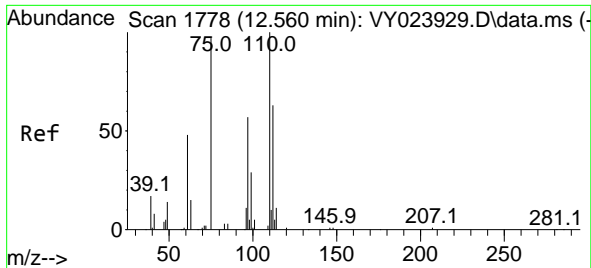
#75  
 1,1,2,2-Tetrachloroethane  
 Concen: 17.921 ug/l  
 RT: 12.481 min Scan# 1765  
 Delta R.T. -0.030 min  
 Lab File: VY023959.D  
 Acq: 11 Dec 2025 16:52



Tgt Ion: 83 Resp: 16207

Ion	Ratio	Lower	Upper
83	100		
131	1.2	5.6	16.8#
85	0.0	32.0	96.2#

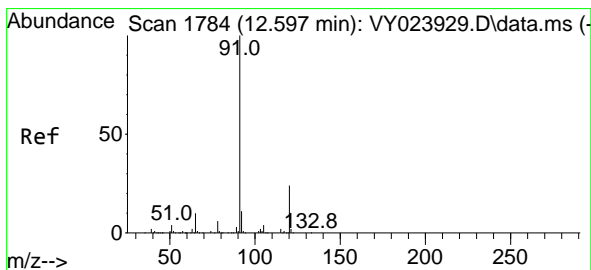
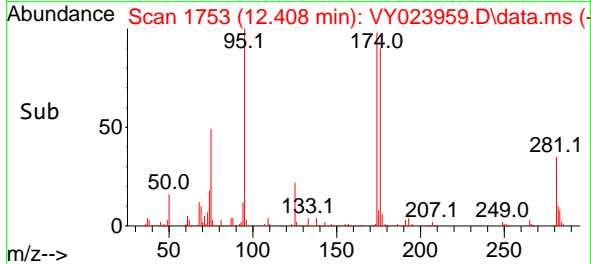
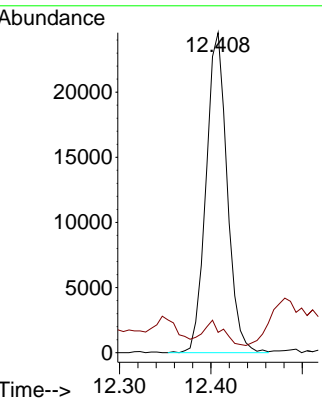
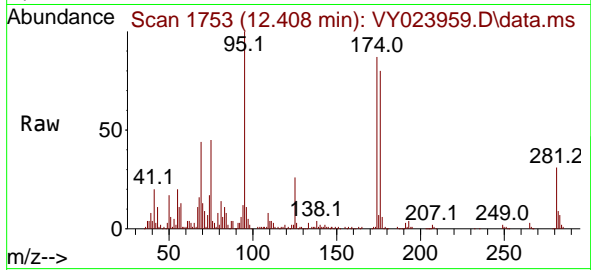




#76  
 1,2,3-Trichloropropane  
 Concen: 57.214 ug/l  
 RT: 12.408 min Scan# 1753  
 Delta R.T. -0.152 min  
 Lab File: VY023959.D  
 Acq: 11 Dec 2025 16:52

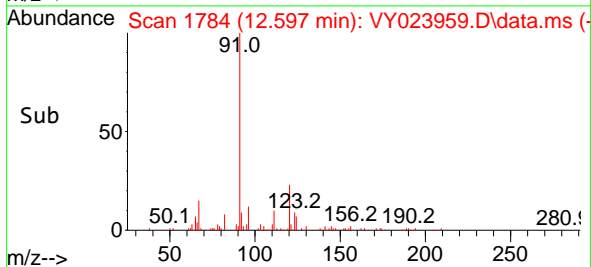
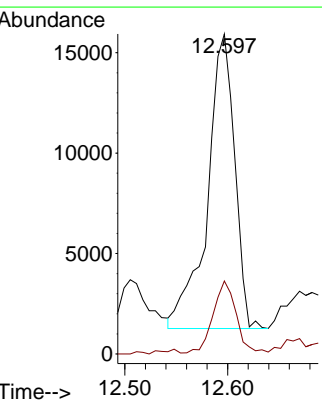
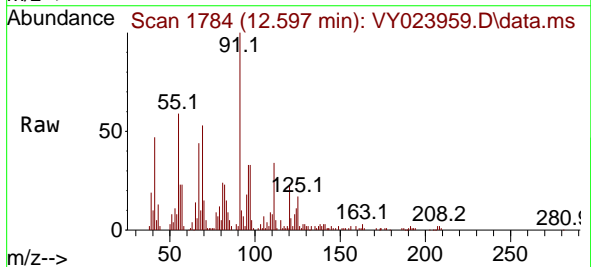
Instrument : MSVOA\_Y  
 ClientSampleId : B127(8-10)120925

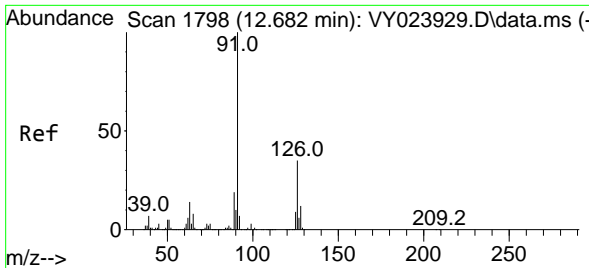
Tgt Ion: 75 Resp: 39331  
 Ion Ratio Lower Upper  
 75 100  
 77 7.5 0.0 0.0#



#78  
 n-propylbenzene  
 Concen: 3.913 ug/l  
 RT: 12.597 min Scan# 1784  
 Delta R.T. 0.000 min  
 Lab File: VY023959.D  
 Acq: 11 Dec 2025 16:52

Tgt Ion: 91 Resp: 27039  
 Ion Ratio Lower Upper  
 91 100  
 120 20.4 12.0 36.0

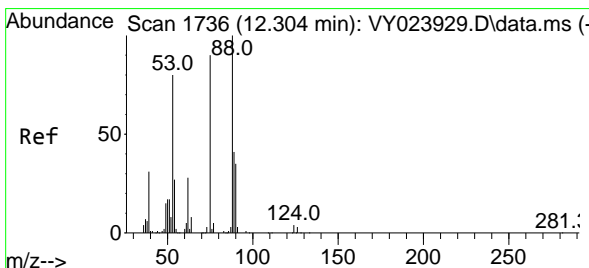
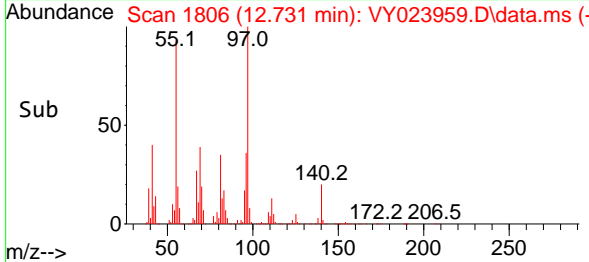
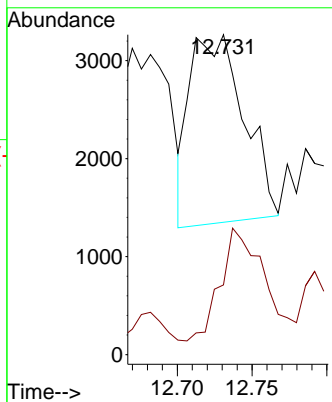
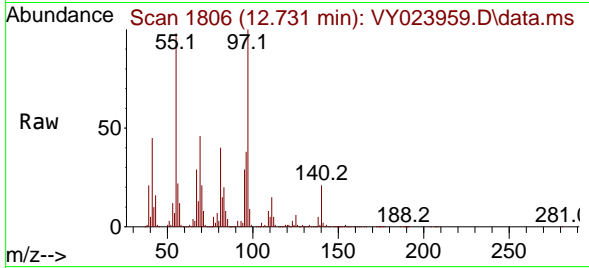




#79  
 2-Chlorotoluene  
 Concen: 1.236 ug/l  
 RT: 12.731 min Scan# 1727  
 Delta R.T. 0.049 min  
 Lab File: VY023959.D  
 Acq: 11 Dec 2025 16:52

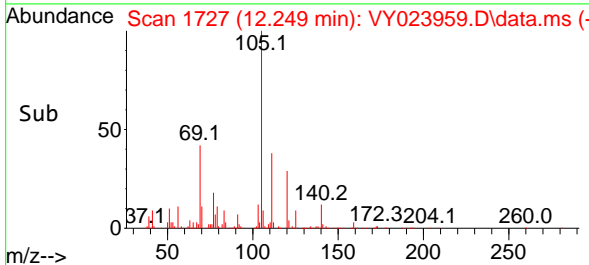
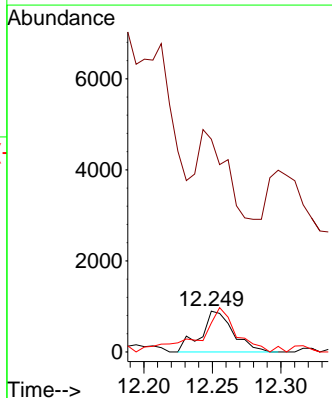
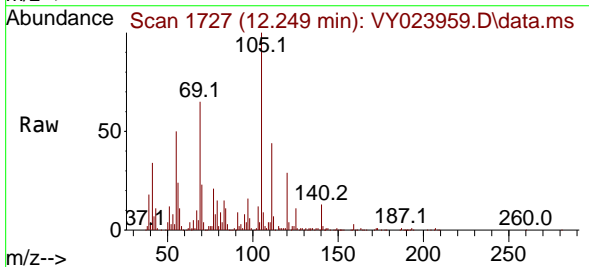
Instrument : MSVOA\_Y  
 ClientSampleId : B127(8-10)120925

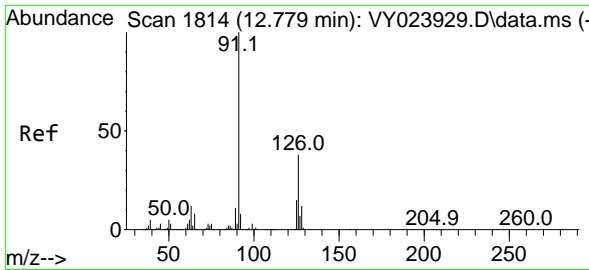
Tgt Ion	Resp	Ion Ratio	Lower	Upper
91	4851	100		
126	48.3	17.9	53.7	



#81  
 trans-1,4-Dichloro-2-butene  
 Concen: 4.854 ug/l  
 RT: 12.249 min Scan# 1727  
 Delta R.T. -0.055 min  
 Lab File: VY023959.D  
 Acq: 11 Dec 2025 16:52

Tgt Ion	Resp	Ion Ratio	Lower	Upper
75	1466	100		
53	164.3	73.4	110.0#	
89	121.6	38.9	58.3#	

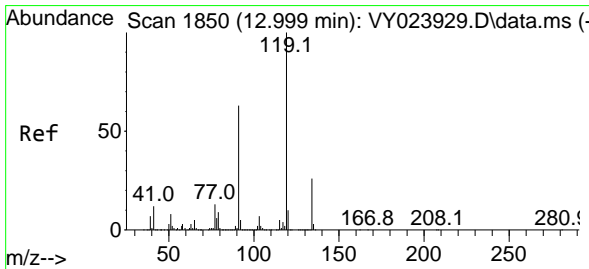
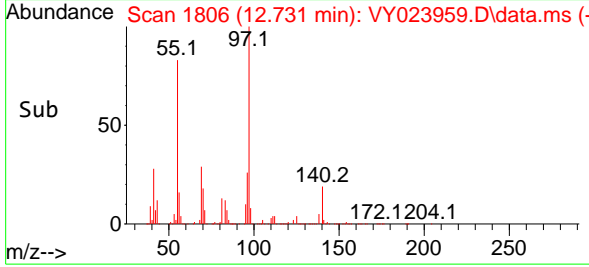
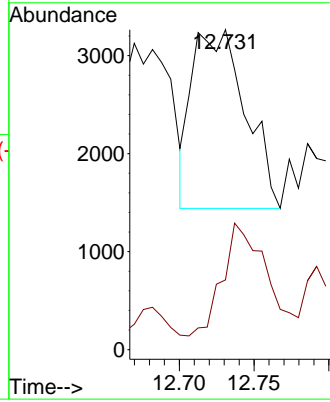
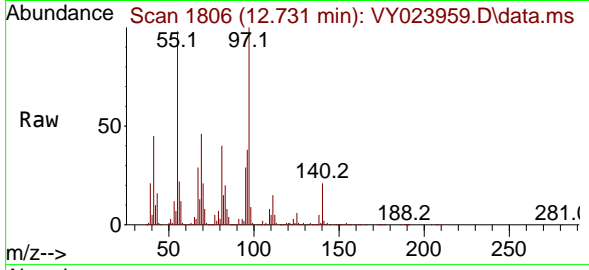




#82  
 4-Chlorotoluene  
 Concen: 1.115 ug/l  
 RT: 12.731 min Scan# 1806  
 Delta R.T. -0.049 min  
 Lab File: VY023959.D  
 Acq: 11 Dec 2025 16:52

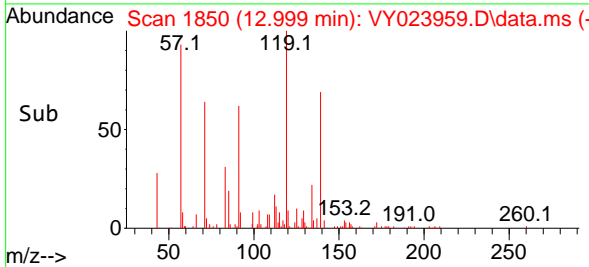
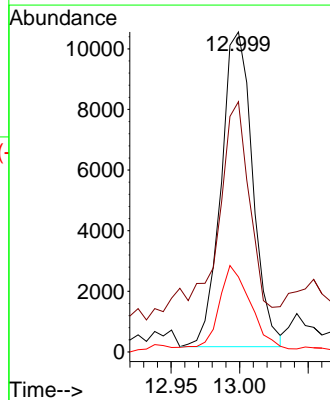
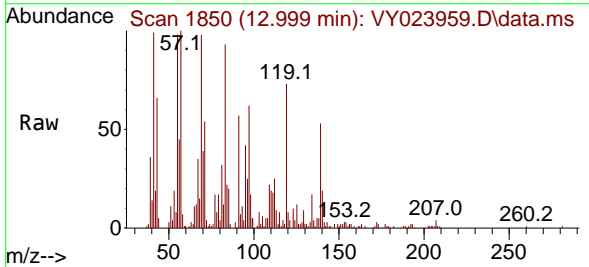
Instrument : MSVOA\_Y  
 ClientSampleId : B127(8-10)120925

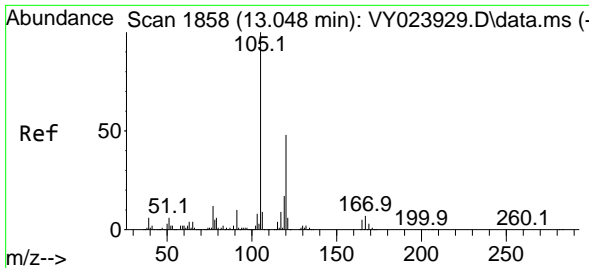
Tgt Ion: 91 Resp: 4505  
 Ion Ratio Lower Upper  
 91 100  
 126 52.1 18.1 54.1



#83  
 tert-Butylbenzene  
 Concen: 3.803 ug/l  
 RT: 12.999 min Scan# 1850  
 Delta R.T. 0.000 min  
 Lab File: VY023959.D  
 Acq: 11 Dec 2025 16:52

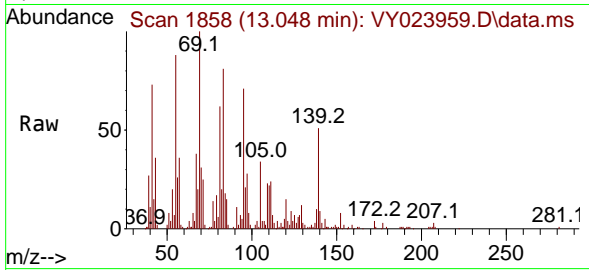
Tgt Ion: 119 Resp: 16651  
 Ion Ratio Lower Upper  
 119 100  
 91 73.2 31.6 94.7  
 134 27.1 13.4 40.1



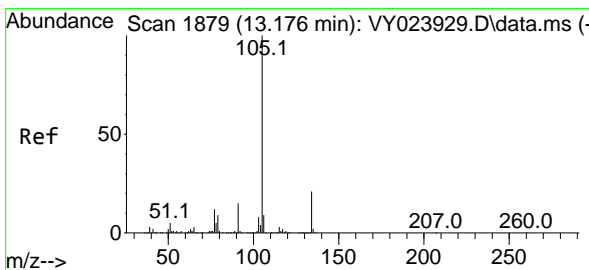
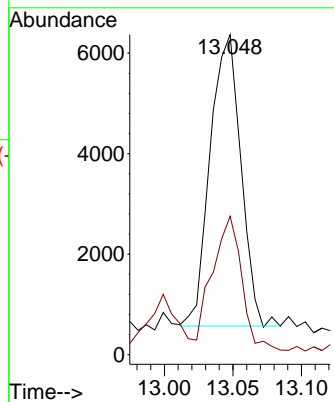
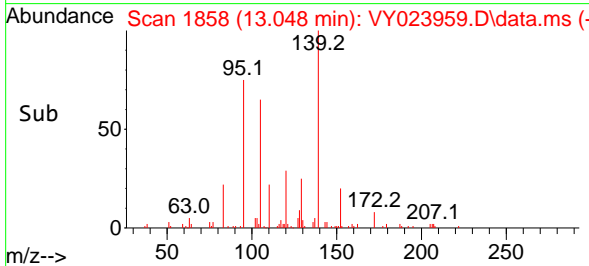


#84  
 1,2,4-Trimethylbenzene  
 Concen: 1.926 ug/l  
 RT: 13.048 min Scan# 1858  
 Delta R.T. 0.000 min  
 Lab File: VY023959.D  
 Acq: 11 Dec 2025 16:52

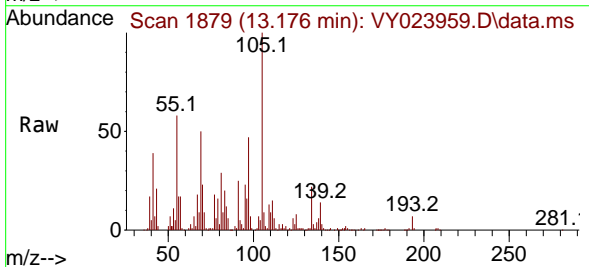
Instrument : MSVOA\_Y  
 ClientSampleId : B127(8-10)120925



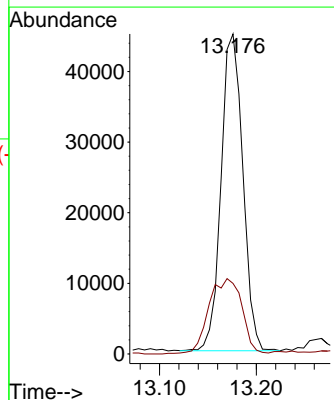
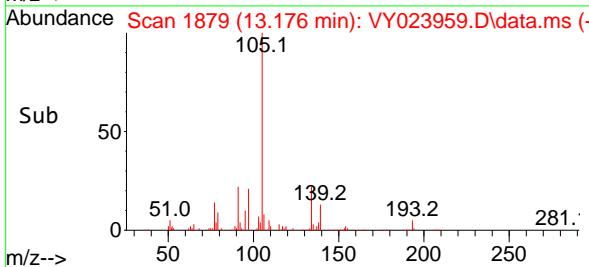
Tgt Ion:105 Resp: 9039  
 Ion Ratio Lower Upper  
 105 100  
 120 43.8 23.4 70.3



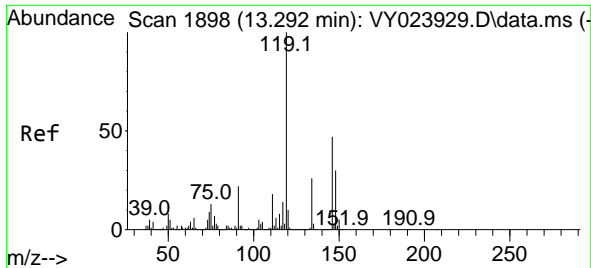
#85  
 sec-Butylbenzene  
 Concen: 10.973 ug/l  
 RT: 13.176 min Scan# 1879  
 Delta R.T. 0.000 min  
 Lab File: VY023959.D  
 Acq: 11 Dec 2025 16:52



Tgt Ion:105 Resp: 70076  
 Ion Ratio Lower Upper  
 105 100  
 134 36.3 10.6 31.8#



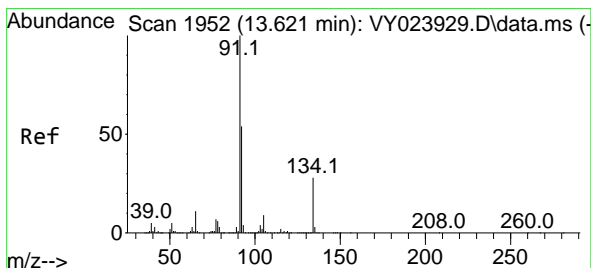
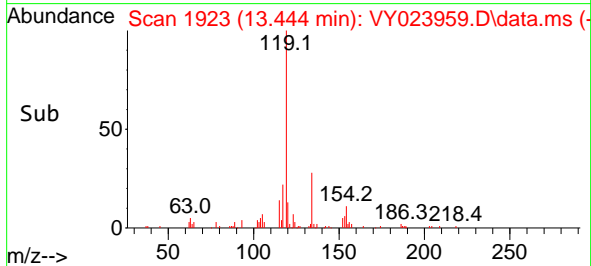
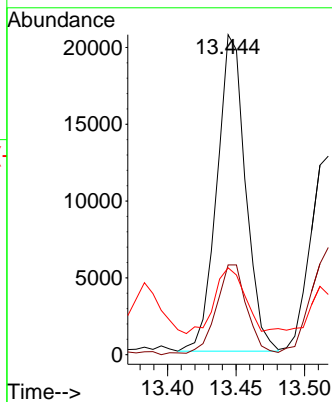
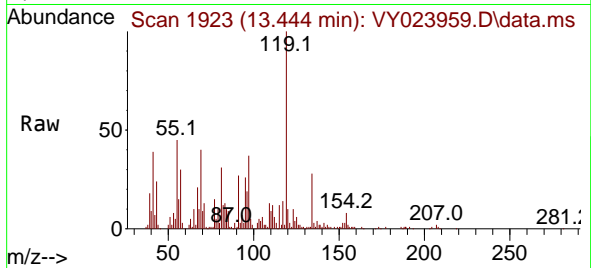




#86  
 p-Isopropyltoluene  
 Concen: 5.541 ug/l  
 RT: 13.444 min Scan# 1923  
 Delta R.T. 0.153 min  
 Lab File: VY023959.D  
 Acq: 11 Dec 2025 16:52

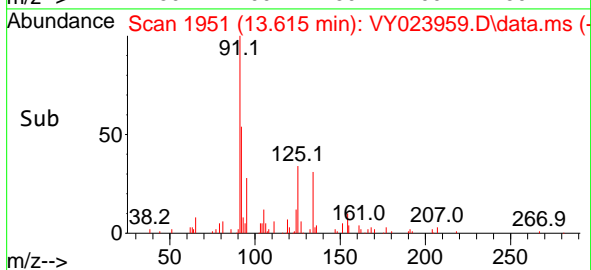
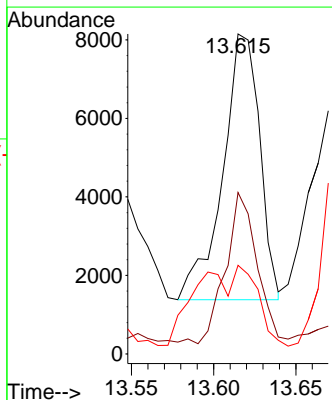
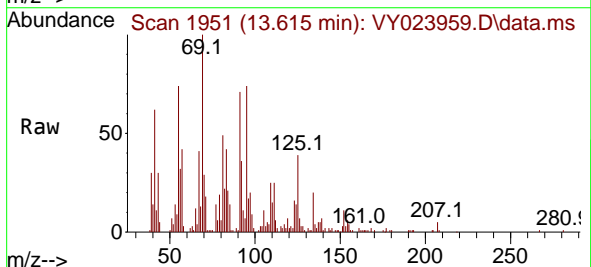
Instrument : MSVOA\_Y  
 ClientSampleId : B127(8-10)120925

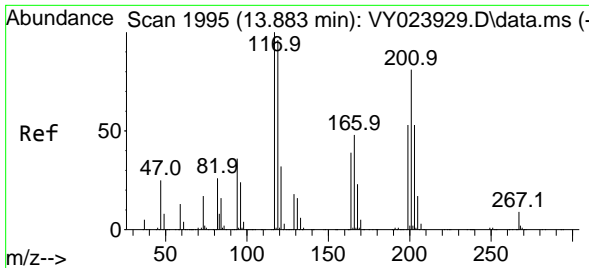
Tgt Ion	Resp	Lower	Upper
119	29955		
134	30.8	13.6	40.7
91	21.9	11.1	33.3



#89  
 n-Butylbenzene  
 Concen: 2.243 ug/l  
 RT: 13.615 min Scan# 1951  
 Delta R.T. -0.006 min  
 Lab File: VY023959.D  
 Acq: 11 Dec 2025 16:52

Tgt Ion	Resp	Lower	Upper
91	10606		
92	52.8	26.9	80.6
134	28.8	13.9	41.6

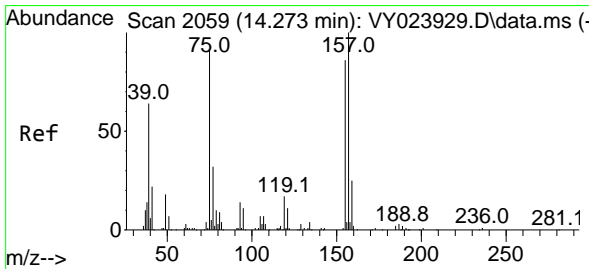
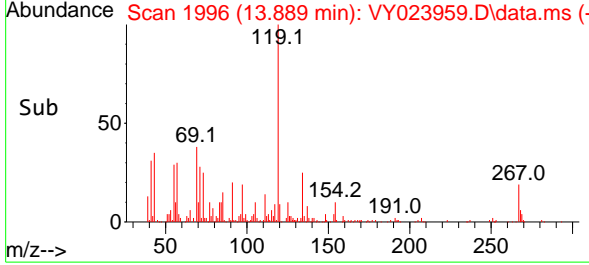
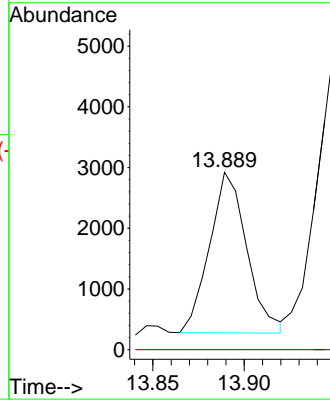
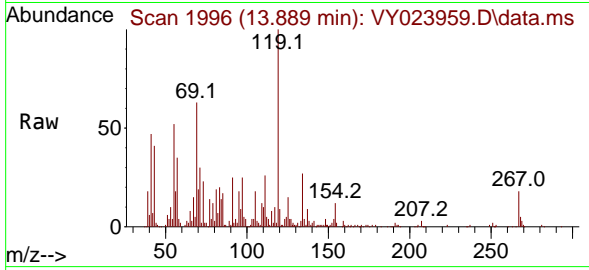




#90  
 Hexachloroethane  
 Concen: 3.411 ug/l  
 RT: 13.889 min Scan# 1996  
 Delta R.T. 0.006 min  
 Lab File: VY023959.D  
 Acq: 11 Dec 2025 16:52

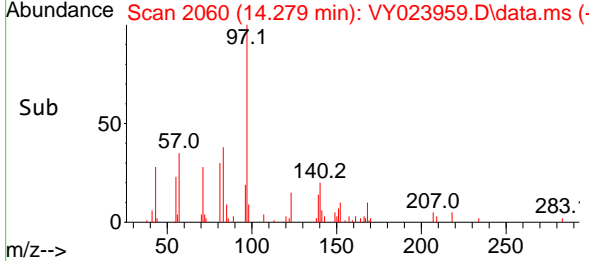
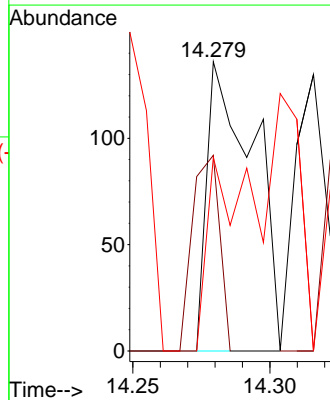
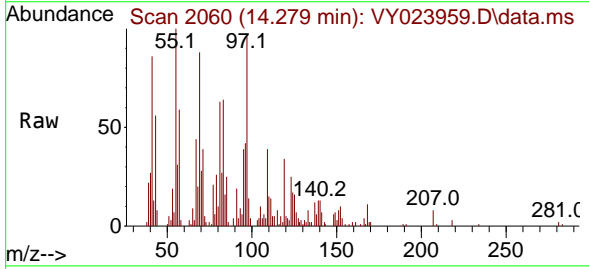
Instrument : MSVOA\_Y  
 ClientSampleId : B127(8-10)120925

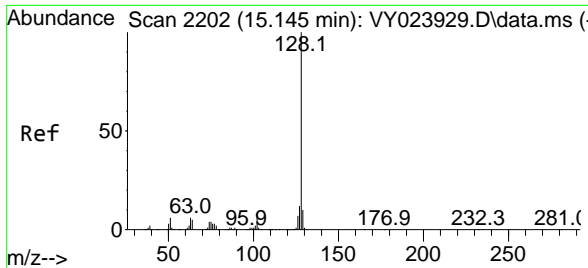
Tgt Ion:117 Resp: 3763  
 Ion Ratio Lower Upper  
 117 100  
 201 0.0 42.4 127.3#



#92  
 1,2-Dibromo-3-Chloropropane  
 Concen: 1.157 ug/l  
 RT: 14.279 min Scan# 2060  
 Delta R.T. 0.006 min  
 Lab File: VY023959.D  
 Acq: 11 Dec 2025 16:52

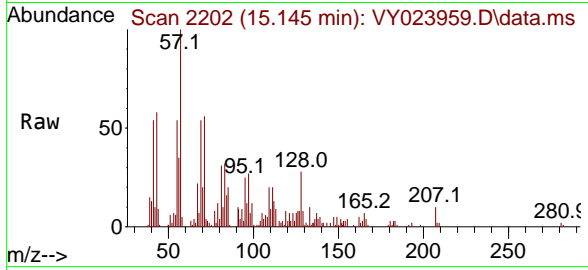
Tgt Ion: 75 Resp: 162  
 Ion Ratio Lower Upper  
 75 100  
 155 39.5 50.2 150.7#  
 157 0.0 62.8 188.5#





#95  
 Naphthalene  
 Concen: 1.841 ug/l  
 RT: 15.145 min Scan# 21  
 Delta R.T. 0.000 min  
 Lab File: VY023959.D  
 Acq: 11 Dec 2025 16:52

Instrument :  
 MSVOA\_Y  
 ClientSampleId :  
 B127(8-10)120925



Tgt Ion:128 Resp: 4148

Ion	Ratio	Lower	Upper
128	100		
127	50.7	10.2	15.2#
129	22.0	8.6	12.8#

