

Data Path : Z:\voasrv\HPCHEM1\MSVOA\_Y\Data\VY010923\  
 Data File : VY012120.D  
 Acq On : 09 Jan 2023 18:54  
 Operator : KP/MD  
 Sample : 01051-01  
 Misc : 5.05g/5.0mL/MSVOA\_Y/SOIL  
 ALS Vial : 20 Sample Multiplier: 1

Instrument :  
 MSVOA\_Y  
 ClientSampleId :  
 72-11933

Integration Parameters: RTEINT.P  
 Integrator: RTE  
 Smoothing : ON Filtering: 5  
 Sampling : 1 Min Area: 3 % of largest Peak  
 Start Thrs: 0.2 Max Peaks: 100  
 Stop Thrs : 0 Peak Location: TOP

If leading or trailing edge < 100 prefer < Baseline drop else tangent >  
 Peak separation: 5

Method : Z:\voasrv\HPCHEM1\MSVOA\_Y\methods\82Y010623S.M  
 Title : SW846 8260

Signal : TIC: VY012120.D\data.ms

peak #	R.T. min	first scan	max scan	last scan	PK TY	peak height	corr. area	corr. % max.	% of total
1	2.076	36	42	47	rVB	6130	8506	1.65%	0.282%
2	4.210	383	392	403	rVB2	1841	5330	1.04%	0.177%
3	4.710	466	474	489	rVB2	9825	30591	5.95%	1.013%
4	5.753	636	645	653	rVB3	2645	6995	1.36%	0.232%
5	6.978	835	846	859	rBV2	17263	54936	10.68%	1.820%
6	7.722	957	968	973	rBV	78710	189867	36.90%	6.289%
7	7.789	973	979	994	rVB	128862	289428	56.25%	9.586%
8	8.142	1023	1037	1049	rBV2	86741	203361	39.52%	6.735%
9	8.691	1117	1127	1142	rBV	193825	381330	74.11%	12.630%
10	10.179	1363	1371	1380	rBV	303625	514547	100.00%	17.042%
11	10.581	1426	1437	1444	rBV	17234	30217	5.87%	1.001%
12	10.947	1488	1497	1505	rBV	20057	35978	6.99%	1.192%
13	11.319	1548	1558	1565	rBV2	7915	13149	2.56%	0.436%
14	11.489	1579	1586	1597	rBV	284538	456870	88.79%	15.132%
15	12.483	1742	1749	1758	rBV2	228207	366723	71.27%	12.146%
16	12.818	1798	1804	1811	rVB	6109	10668	2.07%	0.353%
17	13.428	1894	1904	1916	rBV	244429	381580	74.16%	12.638%
18	13.965	1985	1992	1997	rVB2	6315	10489	2.04%	0.347%
19	14.227	2028	2035	2044	rVB2	4742	8649	1.68%	0.286%
20	15.318	2209	2214	2219	rBV2	5912	9685	1.88%	0.321%
21	16.769	2447	2452	2455	rBV6	5390	10373	2.02%	0.344%

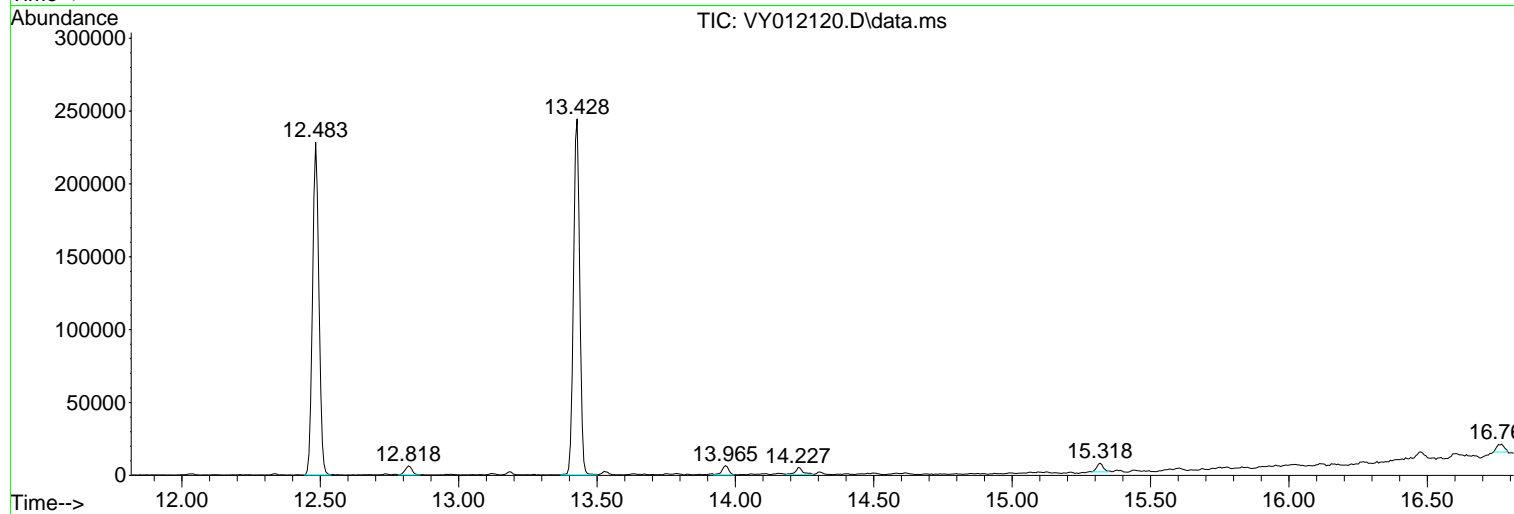
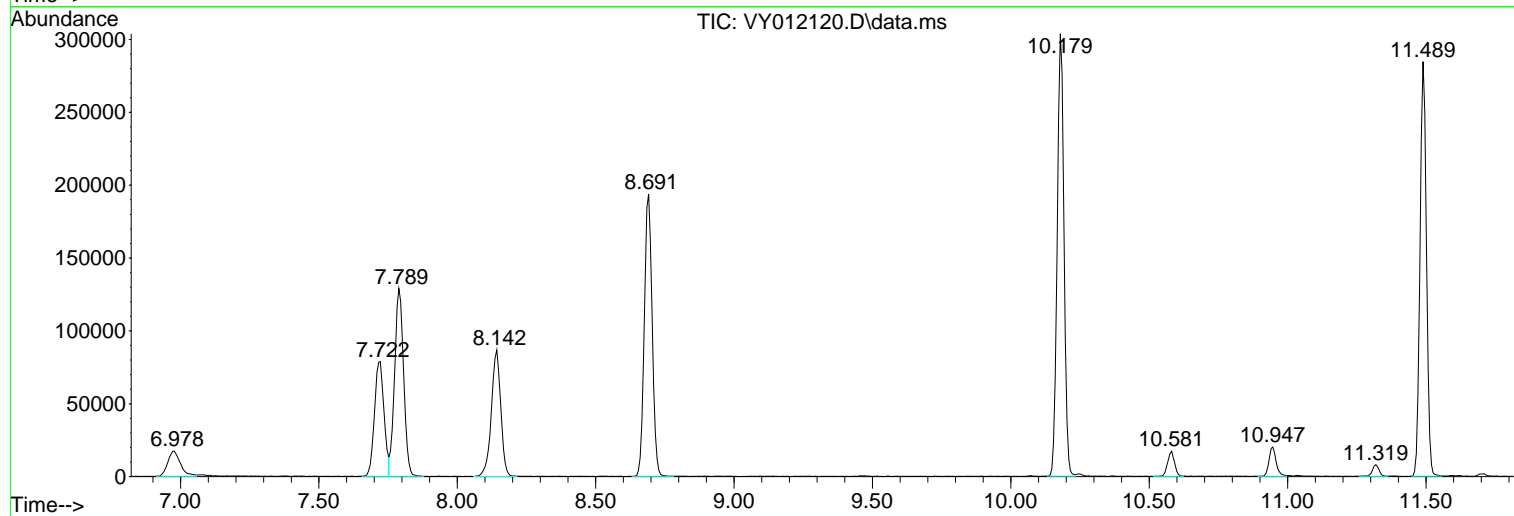
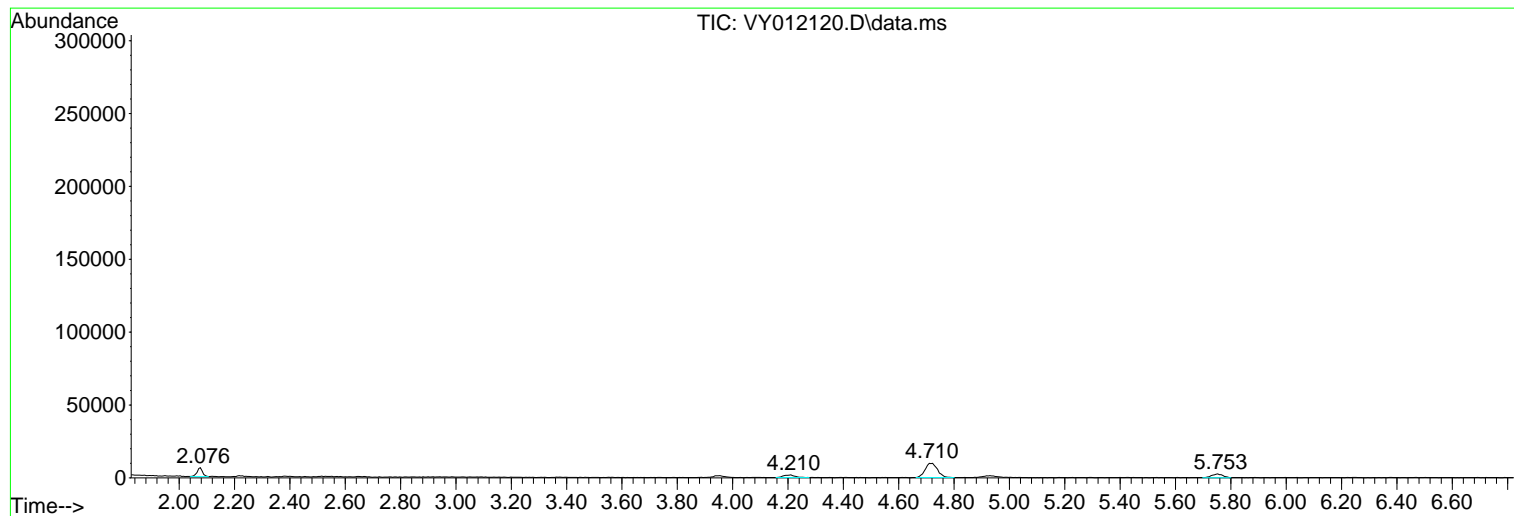
Sum of corrected areas: 3019272

Data Path : Z:\voasrv\HPCHEM1\MSVOA\_Y\Data\VY010923\  
Data File : VY012120.D  
Acq On : 09 Jan 2023 18:54  
Operator : KP/MD  
Sample : 01051-01  
Misc : 5.05g/5.0mL/MSVOA\_Y/SOIL  
ALS Vial : 20 Sample Multiplier: 1

Instrument :  
MSVOA\_Y  
ClientSampleId :  
72-11933

Quant Method : Z:\voasrv\HPCHEM1\MSVOA\_Y\methods\82Y010623S.M  
Quant Title : SW846 8260

TIC Library : C:\Database\NIST20.L  
TIC Integration Parameters: LSCINT.P



Library Search Compound Report

Data Path : Z:\voasrv\HPCHEM1\MSVOA\_Y\Data\VY010923\  
Data File : VY012120.D  
Acq On : 09 Jan 2023 18:54  
Operator : KP/MD  
Sample : 01051-01  
Misc : 5.05g/5.0mL/MSVOA\_Y/SOIL  
ALS Vial : 20 Sample Multiplier: 1

Instrument :  
MSVOA\_Y  
ClientSampleId :  
72-11933

Quant Method : Z:\voasrv\HPCHEM1\MSVOA\_Y\methods\82Y010623S.M  
Quant Title : SW846 8260

TIC Library : C:\Database\NIST20.L  
TIC Integration Parameters: LSCINT.P

No Library Search Compounds Detected

\*\*\*\*\*

Data Path : Z:\voasrv\HPCHEM1\MSVOA\_Y\Data\VY010923\  
Data File : VY012120.D  
Acq On : 09 Jan 2023 18:54  
Operator : KP/MD  
Sample : 01051-01  
Misc : 5.05g/5.0mL/MSVOA\_Y/SOIL  
ALS Vial : 20 Sample Multiplier: 1

Instrument :  
MSVOA\_Y  
ClientSampleId :  
72-11933

Quant Method : Z:\voasrv\HPCHEM1\MSVOA\_Y\methods\82Y010623S.M  
Quant Title : SW846 8260

TIC Library : C:\Database\NIST20.L  
TIC Integration Parameters: LSCINT.P

TIC Top Hit name	RT	EstConc	Units	Response	#	RT	Resp	Conc
------------------	----	---------	-------	----------	---	----	------	------

---