

Data Path : Z:\voasrv\HPCHEM1\MSVOA_Y\Data\VY011023\
 Data File : VY012143.D
 Acq On : 10 Jan 2023 15:49
 Operator : KP/MD
 Sample : 01089-05RE
 Misc : 5.01g/5.0mL/MSVOA_Y/SOIL
 ALS Vial : 16 Sample Multiplier: 1

Instrument :
 MSVOA_Y
 ClientSampleId :
 PL-3-010923RE

Quant Time: Jan 11 03:09:48 2023
 Quant Method : Z:\voasrv\HPCHEM1\MSVOA_Y\methods\82Y010623S.M
 Quant Title : SW846 8260
 QLast Update : Sat Jan 07 01:46:48 2023
 Response via : Initial Calibration

Compound	R.T.	QIon	Response	Conc	Units	Dev(Min)
Internal Standards						
1) Pentafluorobenzene	0.000	168	0	0.000	ug/l	-7.79
34) 1,4-Difluorobenzene	8.697	114	131	50.000	ug/l	0.00
63) Chlorobenzene-d5	0.000	117	0	0.000	ug/l	-11.49
72) 1,4-Dichlorobenzene-d4	0.000	152	0	0.000	ug/l	-13.42
System Monitoring Compounds						
33) 1,2-Dichloroethane-d4	0.000	65	0	0.000	ug/l	
Spiked Amount	50.000	Range	50 - 163	Recovery	=	0.000%#
35) Dibromofluoromethane	0.000	113	0	0.000	ug/l	
Spiked Amount	50.000	Range	54 - 147	Recovery	=	0.000%#
50) Toluene-d8	10.185	98	52	15.301	ug/l	0.00
Spiked Amount	50.000	Range	49 - 140	Recovery	=	30.600%#
62) 4-Bromofluorobenzene	0.000	95	0	0.000	ug/l	
Spiked Amount	50.000	Range	25 - 144	Recovery	=	0.000%#

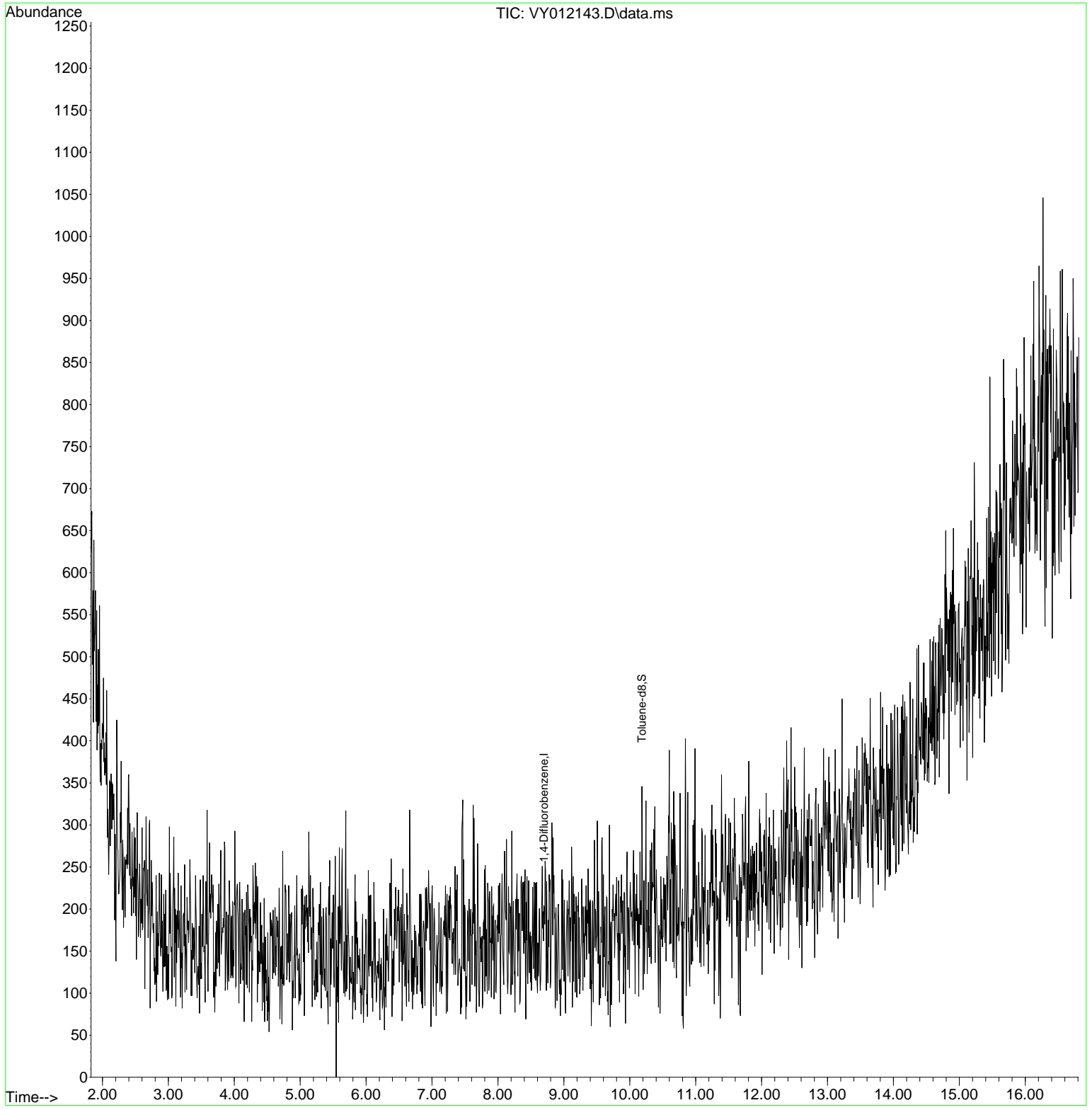
Target Compounds Qvalue

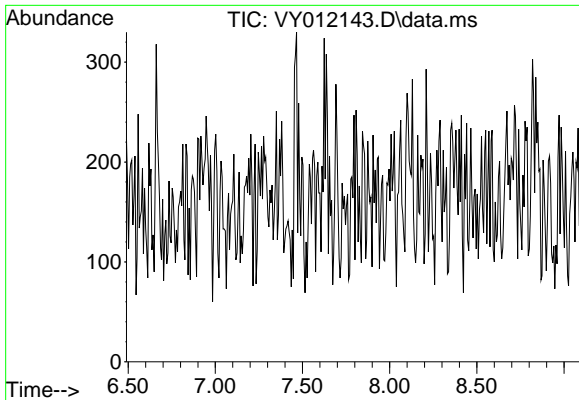
(#) = qualifier out of range (m) = manual integration (+) = signals summed

Data Path : Z:\voasrv\HPCHEM1\MSVOA_Y\Data\VY011023\
 Data File : VY012143.D
 Acq On : 10 Jan 2023 15:49
 Operator : KP/MD
 Sample : 01089-05RE
 Misc : 5.01g/5.0mL/MSVOA_Y/SOIL
 ALS Vial : 16 Sample Multiplier: 1

Instrument :
 MSVOA_Y
ClientSampleId :
 PL-3-010923RE

Quant Time: Jan 11 03:09:48 2023
 Quant Method : Z:\voasrv\HPCHEM1\MSVOA_Y\methods\82Y010623S.M
 Quant Title : SW846 8260
 QLast Update : Sat Jan 07 01:46:48 2023
 Response via : Initial Calibration

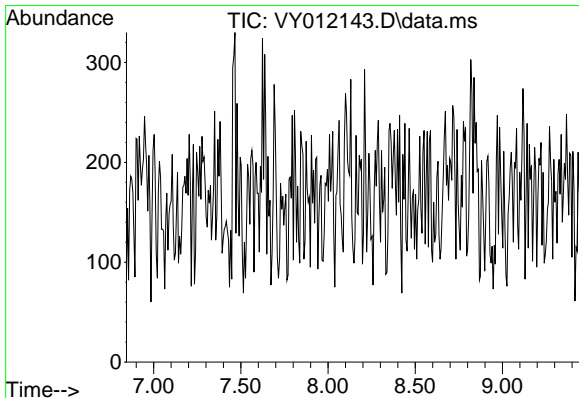
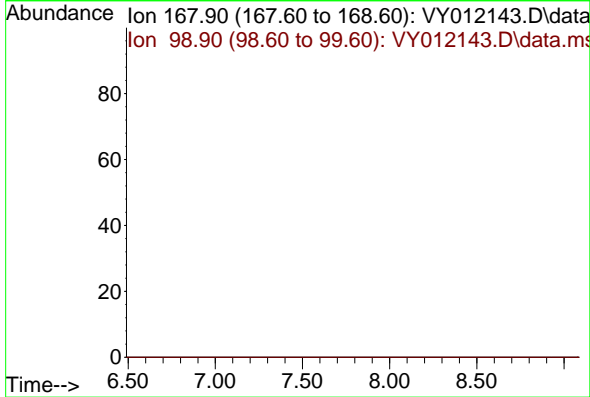




#1
 Pentafluorobenzene
 Concen: 0.000 ug/l
 Expected RT: 7.79 min
 Lab File: VY012143.D
 Acq: 10 Jan 2023 15:49

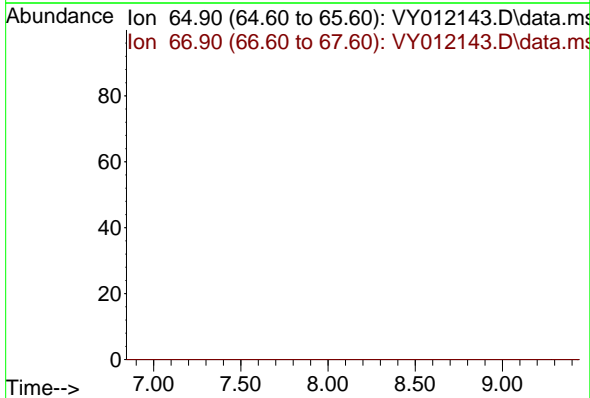
Instrument :
 MSVOA_Y
ClientSampleId :
 PL-3-010923RE

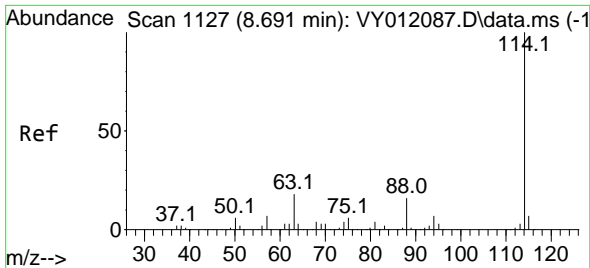
Tgt Ion: 168
 Sig Exp Ratio
 168 100
 99 55.0



#33
 1,2-Dichloroethane-d4
 Concen: 0.000 ug/l
 Expected RT: 8.14 min
 Lab File: VY012143.D
 Acq: 10 Jan 2023 15:49

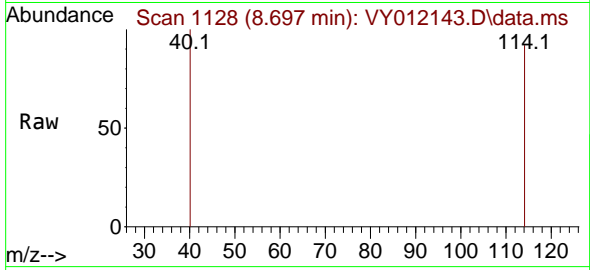
Tgt Ion: 65
 Sig Exp Ratio
 65 100
 67 51.6



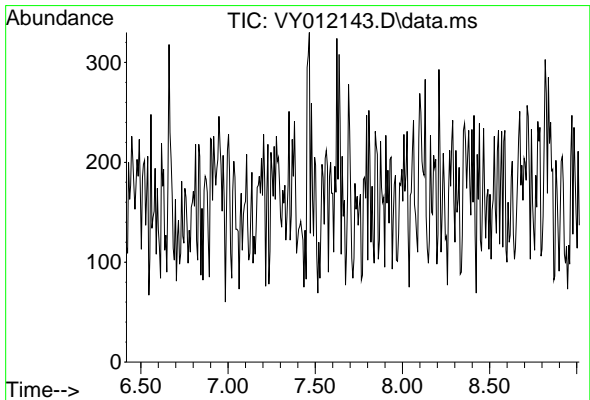
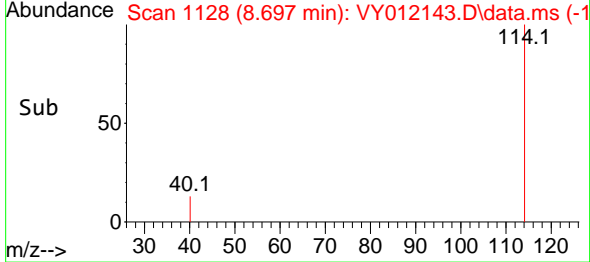
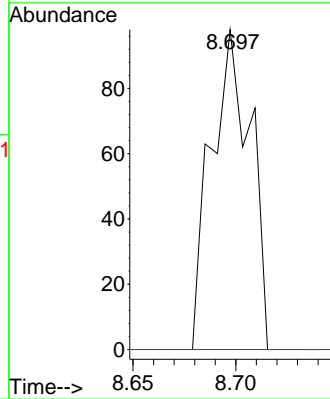


#34
 1,4-Difluorobenzene
 Concen: 50.000 ug/l
 RT: 8.697 min Scan# 1127
 Delta R.T. 0.006 min
 Lab File: VY012143.D
 Acq: 10 Jan 2023 15:49

Instrument : MSVOA_Y
 ClientSampleId : PL-3-010923RE

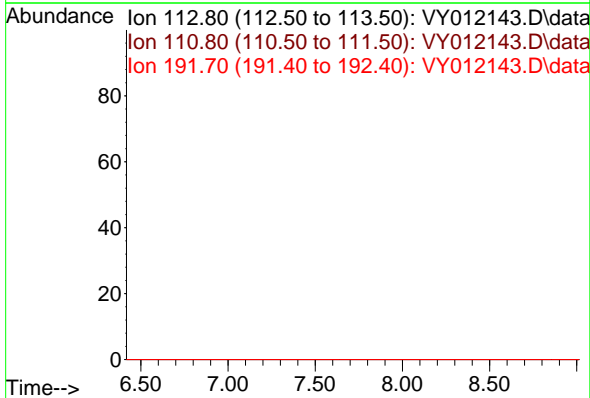


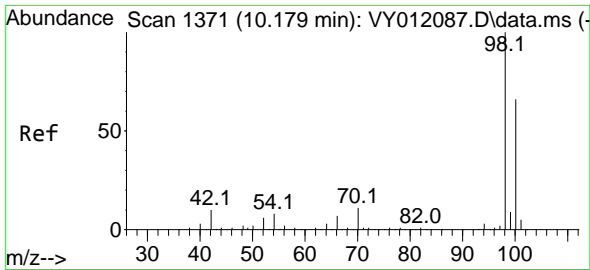
Tgt Ion: 114 Resp: 131
 Ion Ratio Lower Upper
 114 100
 63 0.0 0.0 39.6
 88 0.0 0.0 32.2



#35
 Dibromofluoromethane
 Concen: 0.000 ug/l
 Expected RT: 7.72 min
 Lab File: VY012143.D
 Acq: 10 Jan 2023 15:49

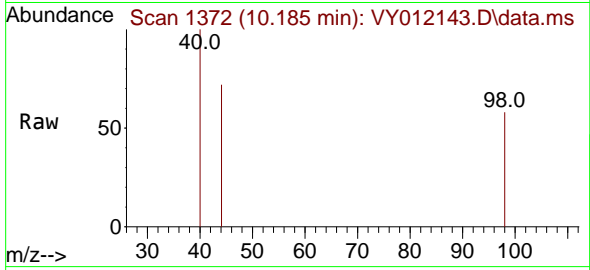
Tgt Ion: 113
 Sig Exp Ratio
 113 100
 111 103.7
 192 20.0



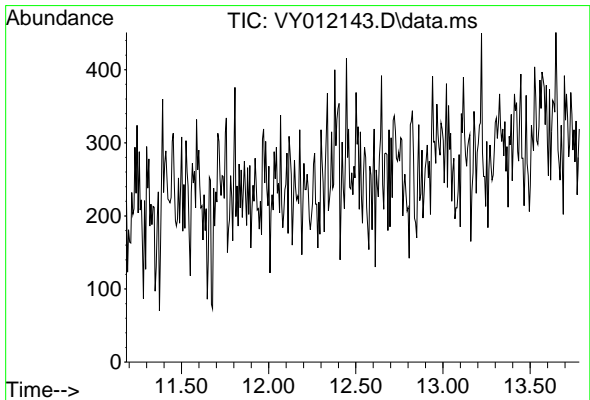
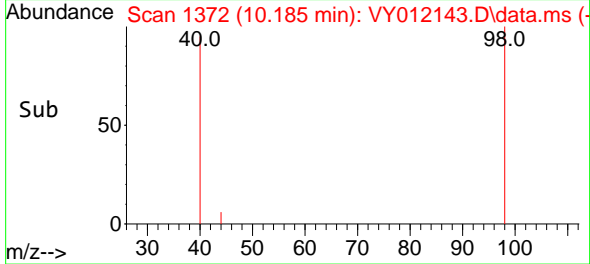
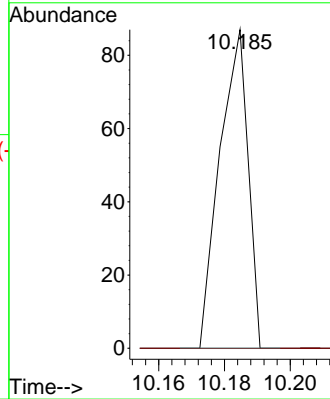


#50
 Toluene-d8
 Concen: 15.301 ug/l
 RT: 10.185 min Scan# 11
 Delta R.T. 0.006 min
 Lab File: VY012143.D
 Acq: 10 Jan 2023 15:49

Instrument :
 MSVOA_Y
 ClientSampleId :
 PL-3-010923RE

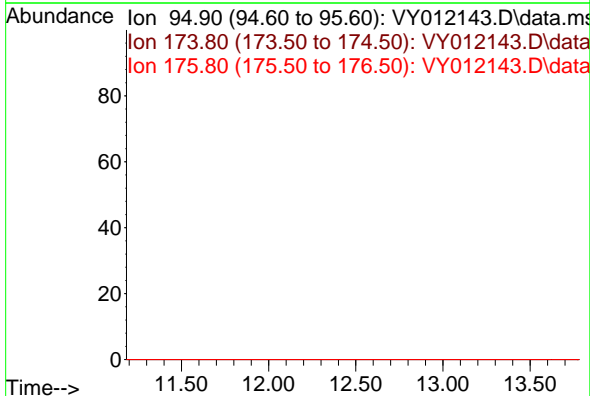


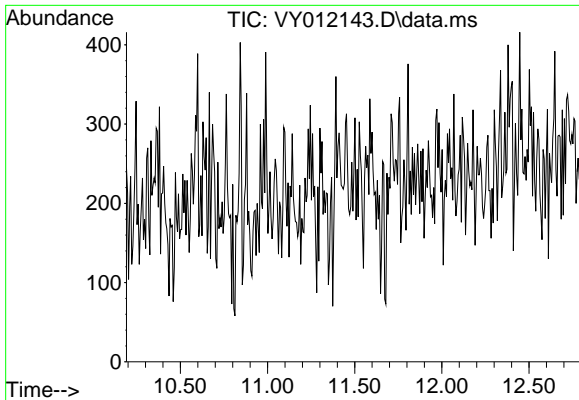
Tgt Ion: 98 Resp: 52
 Ion Ratio Lower Upper
 98 100
 100 0.0 51.9 77.9#



#62
 4-Bromofluorobenzene
 Concen: 0.000 ug/l
 Expected RT: 12.48 min
 Lab File: VY012143.D
 Acq: 10 Jan 2023 15:49

Tgt Ion: 95
 Sig Exp Ratio
 95 100
 174 86.0
 176 83.8

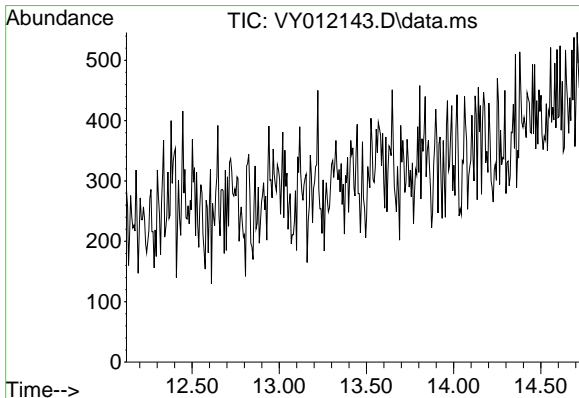
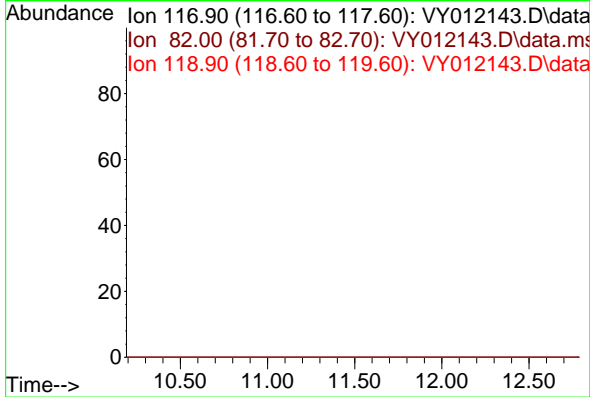




#63
 Chlorobenzene-d5
 Concen: 0.000 ug/l
 Expected RT: 11.49 min
 Lab File: VY012143.D
 Acq: 10 Jan 2023 15:49

Instrument :
 MSVOA_Y
ClientSampleId :
 PL-3-010923RE

Tgt Ion: 117
 Sig Exp Ratio
 117 100
 82 56.0
 119 31.8



#72
 1,4-Dichlorobenzene-d4
 Concen: 0.000 ug/l
 Expected RT: 13.42 min
 Lab File: VY012143.D
 Acq: 10 Jan 2023 15:49

Tgt Ion: 152
 Sig Exp Ratio
 152 100
 115 58.2
 150 171.3

