

Data Path : Z:\voasrv\HPCHEM1\MSVOA_Y\Data\VY013125\
 Data File : VY021013.D
 Acq On : 31 Jan 2025 16:30
 Operator : SY/MD
 Sample : VIBLK
 Misc : 5.00g/5.0mL/MSVOA_Y/SOIL
 ALS Vial : 1 Sample Multiplier: 1

Instrument :
 MSVOA_Y
 ClientSampleId :
 VIBLK

Quant Time: Jan 31 22:26:44 2025
 Quant Method : Z:\voasrv\HPCHEM1\MSVOA_Y\methods\82Y013025S.M
 Quant Title : SW846 8260
 QLast Update : Fri Jan 31 16:50:06 2025
 Response via : Initial Calibration

Compound	R.T.	QIon	Response	Conc	Units	Dev(Min)

Internal Standards						
1) Pentafluorobenzene	7.713	168	208070	50.000	ug/l	0.00
34) 1,4-Difluorobenzene	8.615	114	369169	50.000	ug/l	0.00
63) Chlorobenzene-d5	11.420	117	343532	50.000	ug/l	0.00
72) 1,4-Dichlorobenzene-d4	13.352	152	147549	50.000	ug/l	0.00
System Monitoring Compounds						
33) 1,2-Dichloroethane-d4	8.060	65	116256	65.625	ug/l	0.00
Spiked Amount	50.000	Range 50 - 163	Recovery	=	131.240%	
35) Dibromofluoromethane	7.634	113	120919	54.483	ug/l	0.00
Spiked Amount	50.000	Range 54 - 147	Recovery	=	108.960%	
50) Toluene-d8	10.109	98	436259	50.362	ug/l	0.00
Spiked Amount	50.000	Range 58 - 134	Recovery	=	100.720%	
62) 4-Bromofluorobenzene	12.407	95	147163	50.629	ug/l	0.00
Spiked Amount	50.000	Range 29 - 146	Recovery	=	101.260%	

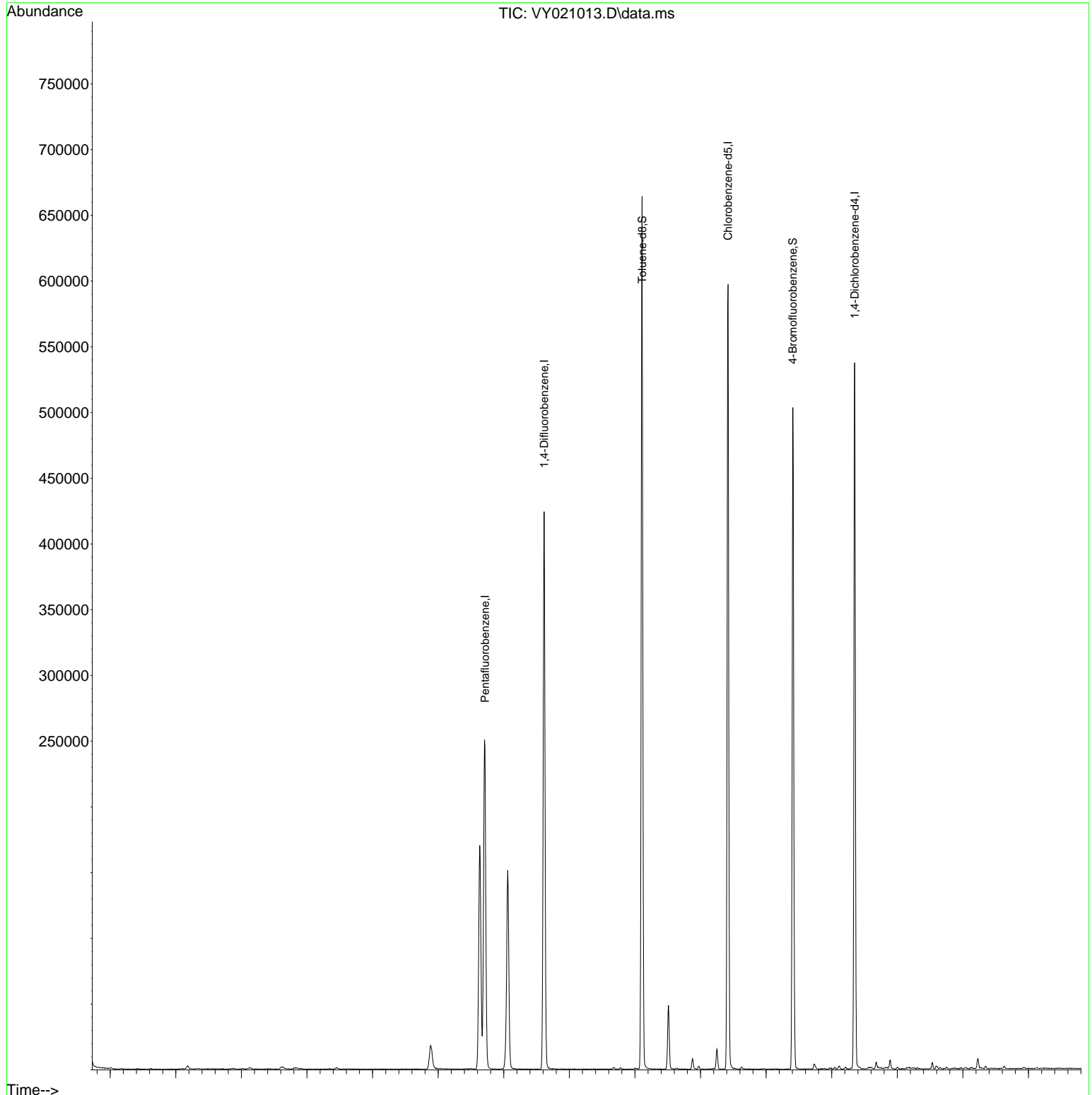
Target Compounds Qvalue

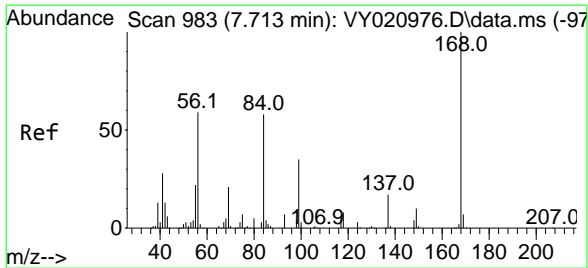
(#) = qualifier out of range (m) = manual integration (+) = signals summed

Data Path : Z:\voasrv\HPCHEM1\MSVOA_Y\Data\VY013125\
Data File : VY021013.D
Acq On : 31 Jan 2025 16:30
Operator : SY/MD
Sample : VI BLK
Misc : 5.00g/5.0mL/MSVOA_Y/SOIL
ALS Vial : 1 Sample Multiplier: 1

Instrument :
MSVOA_Y
ClientSampleId :
VI BLK

Quant Time: Jan 31 22:26:44 2025
Quant Method : Z:\voasrv\HPCHEM1\MSVOA_Y\methods\82Y013025S.M
Quant Title : SW846 8260
QLast Update : Fri Jan 31 16:50:06 2025
Response via : Initial Calibration

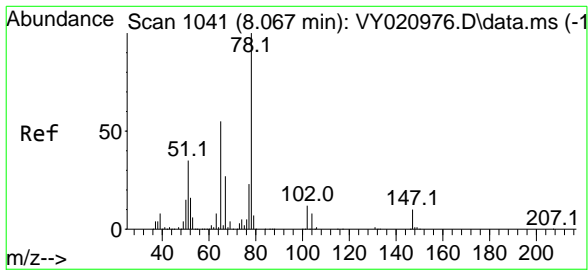
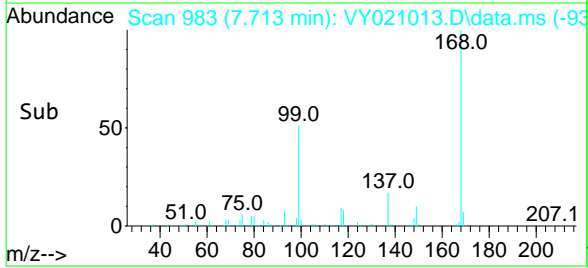
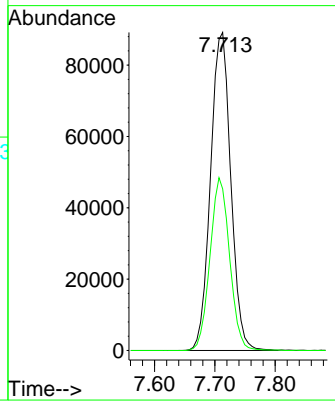
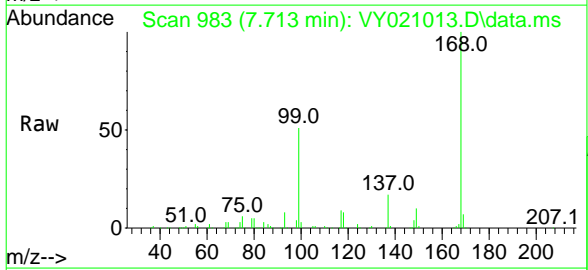




#1
 Pentafluorobenzene
 Concen: 50.000 ug/l
 RT: 7.713 min Scan# 98
 Delta R.T. -0.000 min
 Lab File: VY021013.D
 Acq: 31 Jan 2025 16:30

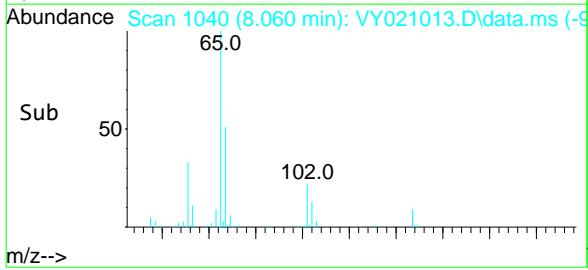
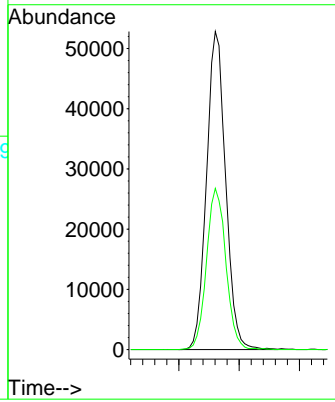
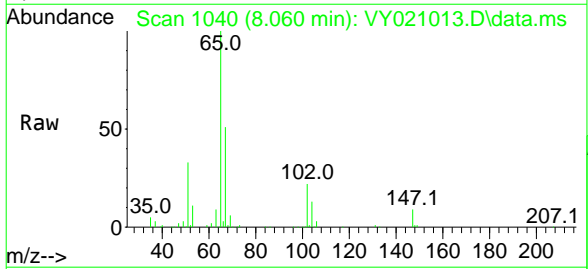
Instrument : MSVOA_Y
 ClientSampleId : VIBLK

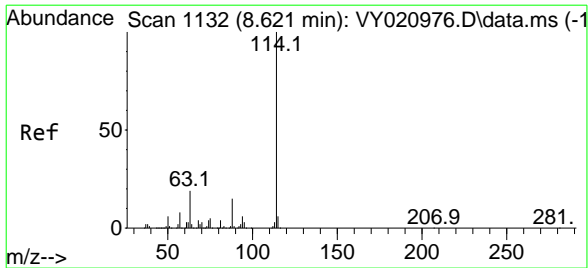
Tgt Ion: 168 Resp: 208070
 Ion Ratio Lower Upper
 168 100
 99 50.8 42.2 63.2



#33
 1,2-Dichloroethane-d4
 Concen: 65.625 ug/l
 RT: 8.060 min Scan# 1040
 Delta R.T. -0.006 min
 Lab File: VY021013.D
 Acq: 31 Jan 2025 16:30

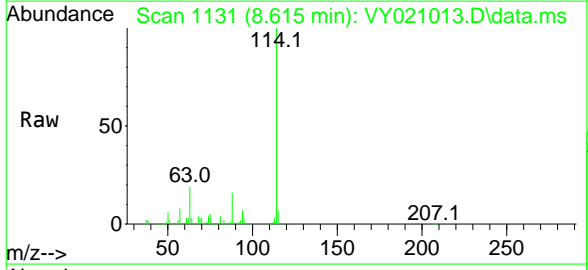
Tgt Ion: 65 Resp: 116256
 Ion Ratio Lower Upper
 65 100
 67 51.4 0.0 104.4





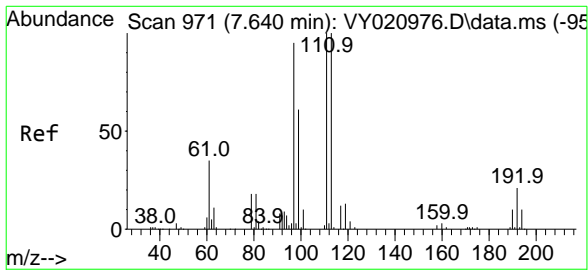
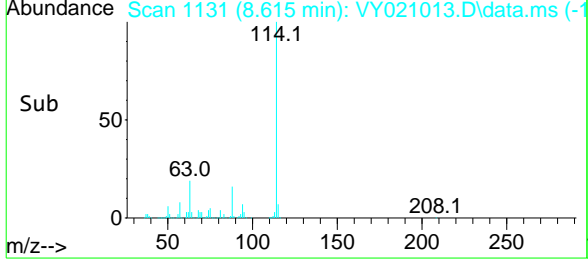
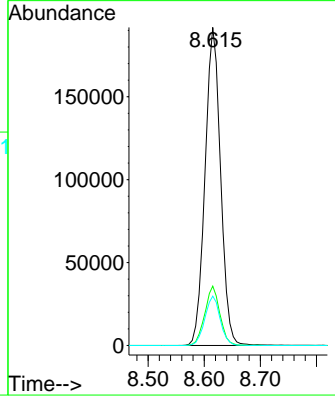
#34
 1,4-Difluorobenzene
 Concen: 50.000 ug/l
 RT: 8.615 min Scan# 11
 Delta R.T. -0.006 min
 Lab File: VY021013.D
 Acq: 31 Jan 2025 16:30

Instrument :
 MSVOA_Y
 ClientSampleId :
 VIBLK



Tgt Ion:114 Resp: 369169

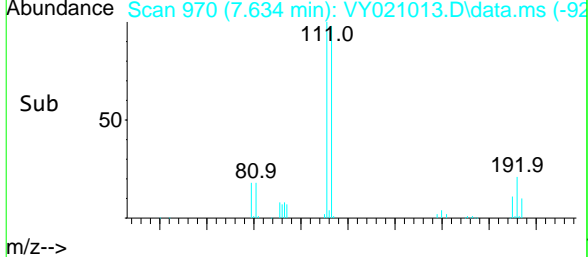
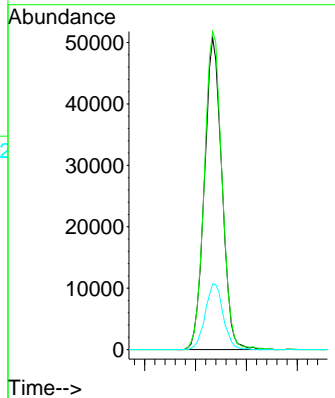
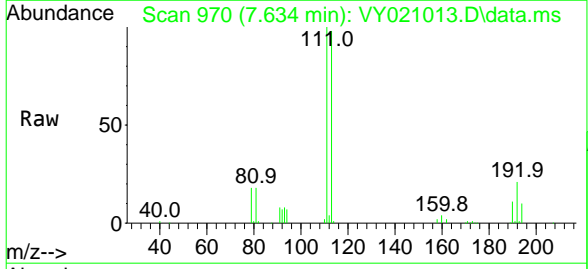
Ion	Ratio	Lower	Upper
114	100		
63	18.7	0.0	37.2
88	15.5	0.0	29.6

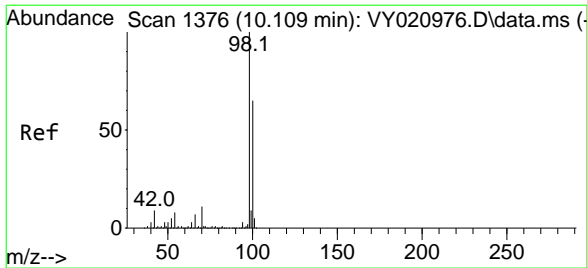


#35
 Dibromofluoromethane
 Concen: 54.483 ug/l
 RT: 7.634 min Scan# 970
 Delta R.T. -0.006 min
 Lab File: VY021013.D
 Acq: 31 Jan 2025 16:30

Tgt Ion:113 Resp: 120919

Ion	Ratio	Lower	Upper
113	100		
111	103.2	82.6	123.8
192	21.7	16.8	25.2

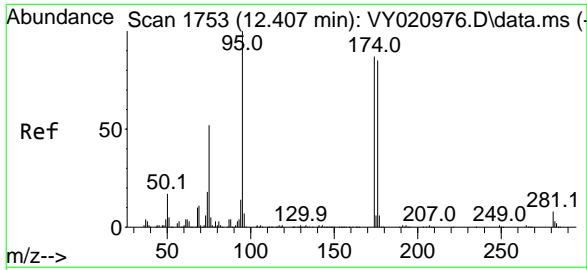
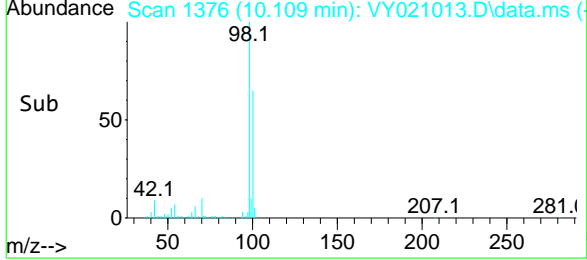
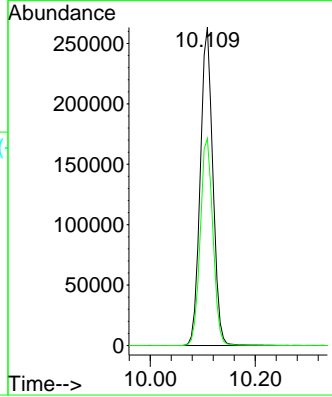
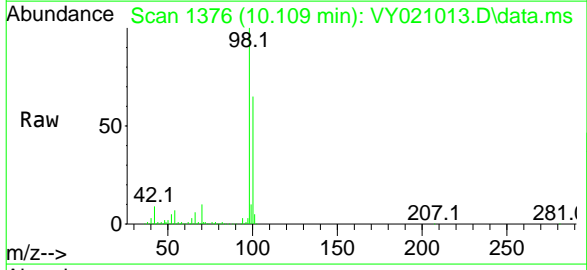




#50
 Toluene-d8
 Concen: 50.362 ug/l
 RT: 10.109 min Scan# 1376
 Delta R.T. -0.000 min
 Lab File: VY021013.D
 Acq: 31 Jan 2025 16:30

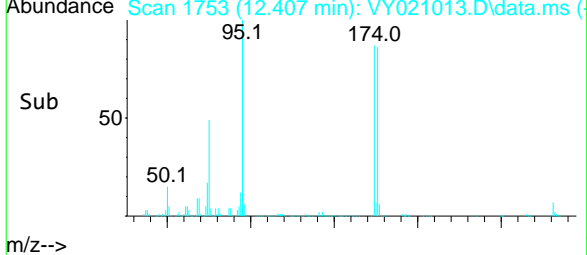
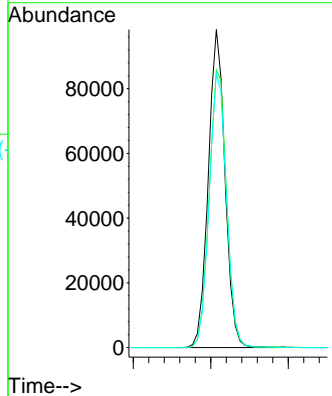
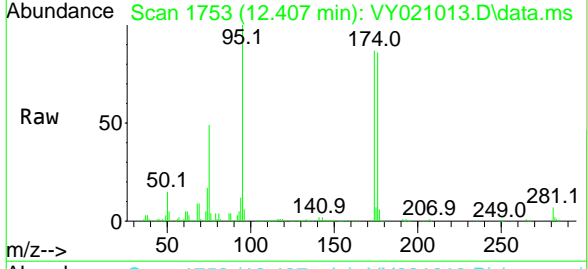
Instrument : MSVOA_Y
 ClientSampleId : VIBLK

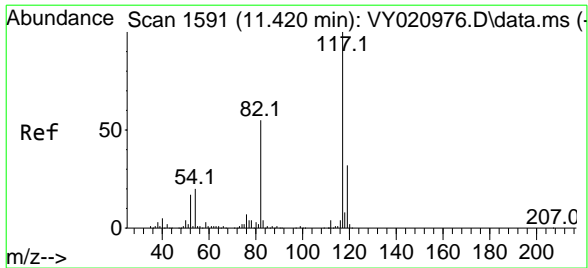
Tgt Ion: 98 Resp: 436259
 Ion Ratio Lower Upper
 98 100
 100 65.8 52.6 79.0



#62
 4-Bromofluorobenzene
 Concen: 50.629 ug/l
 RT: 12.407 min Scan# 1753
 Delta R.T. -0.000 min
 Lab File: VY021013.D
 Acq: 31 Jan 2025 16:30

Tgt Ion: 95 Resp: 147163
 Ion Ratio Lower Upper
 95 100
 174 91.2 0.0 181.2
 176 89.2 0.0 175.2

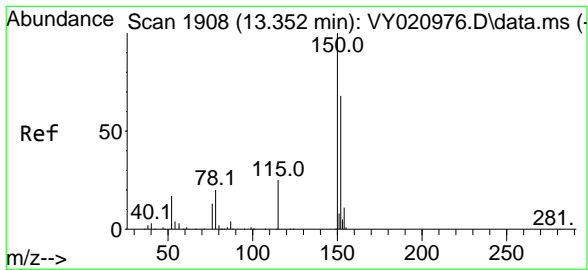
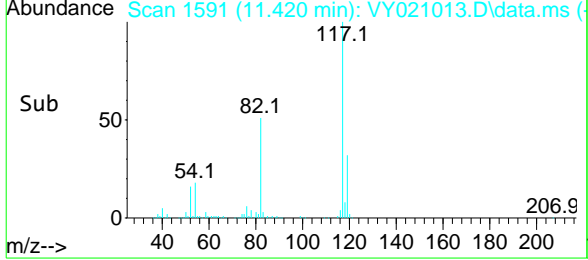
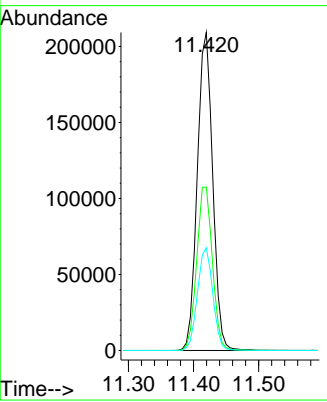
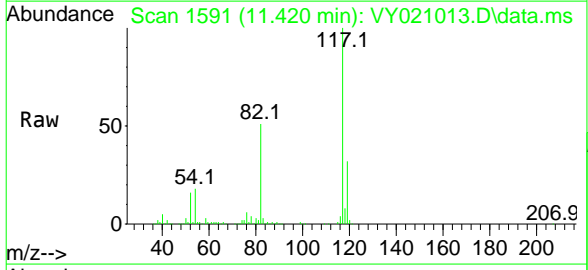




#63
 Chlorobenzene-d5
 Concen: 50.000 ug/l
 RT: 11.420 min Scan# 1519
 Delta R.T. -0.000 min
 Lab File: VY021013.D
 Acq: 31 Jan 2025 16:30

Instrument : MSVOA_Y
 ClientSampleId : VIBLK

Tgt Ion	Resp	Lower	Upper
117	100		
82	51.4	44.2	66.2
119	32.3	25.9	38.9



#72
 1,4-Dichlorobenzene-d4
 Concen: 50.000 ug/l
 RT: 13.352 min Scan# 1908
 Delta R.T. -0.000 min
 Lab File: VY021013.D
 Acq: 31 Jan 2025 16:30

Tgt Ion	Resp	Lower	Upper
152	100		
115	57.1	28.4	85.2
150	156.5	0.0	342.8

