

Data Path : Z:\voasrv\HPCHEM1\MSVOA\_Y\Data\VY013125\  
 Data File : VY021014.D  
 Acq On : 31 Jan 2025 16:53  
 Operator : SY/MD  
 Sample : Q1254-01  
 Misc : 5.05g/5.0mL/MSVOA\_Y/SOIL/A  
 ALS Vial : 1 Sample Multiplier: 1

Instrument :  
 MSVOA\_Y  
 ClientSampleId :  
 OK-02-01312025

Integration Parameters: RTEINT.P

Integrator: RTE

Smoothing : ON

Sampling : 1

Start Thrs: 0.2

Stop Thrs : 0

Filtering: 5

Min Area: 3 % of largest Peak

Max Peaks: 100

Peak Location: TOP

If leading or trailing edge < 100 prefer < Baseline drop else tangent >

Peak separation: 5

Method : Z:\voasrv\HPCHEM1\MSVOA\_Y\methods\82Y013025S.M  
 Title : SW846 8260

Signal : TIC: VY021014.D\data.ms

peak #	R.T. min	first scan	max scan	last scan	PK TY	peak height	corr. area	corr. % max.	% of total
1	2.007	44	47	53	rVB2	899	1382	83.71%	3.201%
2	2.111	61	64	66	rBV2	501	541	32.77%	1.253%
3	2.531	132	133	137	rBV2	384	440	26.65%	1.019%
4	2.623	146	148	152	rBV2	324	360	21.80%	0.834%
5	2.739	163	167	171	rVB2	390	536	32.47%	1.242%
6	2.800	174	177	179	rBV2	224	298	18.05%	0.690%
7	2.964	199	204	206	rBV3	311	515	31.19%	1.193%
8	3.367	267	270	272	rBV2	249	284	17.20%	0.658%
9	3.623	308	312	313	rVB2	314	363	21.99%	0.841%
10	3.653	313	317	320	rBV3	351	641	38.82%	1.485%
11	3.885	351	355	357	rBV3	296	475	28.77%	1.100%
12	4.104	387	391	394	rVB2	295	365	22.11%	0.846%
13	4.299	421	423	428	rVB3	262	411	24.89%	0.952%
14	4.549	461	464	466	rBV2	355	365	22.11%	0.846%
15	4.665	478	483	484	rBV2	190	269	16.29%	0.623%
16	4.775	498	501	502	rBV2	361	304	18.41%	0.704%
17	4.793	502	504	507	rVB2	216	284	17.20%	0.658%
18	5.189	568	569	572	rVB	434	289	17.50%	0.669%
19	5.567	627	631	634	rBV2	279	369	22.35%	0.855%
20	5.769	662	664	666	rBV	329	295	17.87%	0.683%
21	5.793	666	668	671	rVB2	336	373	22.59%	0.864%
22	5.872	679	681	684	rVB2	388	376	22.77%	0.871%
23	5.915	684	688	690	rBV	224	329	19.93%	0.762%
24	6.128	721	723	727	rVB3	261	349	21.14%	0.808%
25	6.579	795	797	801	rVB3	318	381	23.08%	0.883%
26	6.781	827	830	832	rBV2	260	315	19.08%	0.730%
27	6.878	843	846	848	rVB2	300	343	20.78%	0.795%
28	6.963	856	860	863	rBV	262	320	19.38%	0.741%
29	7.012	866	868	871	rVB2	271	297	17.99%	0.688%
30	7.055	871	875	877	rBV2	241	301	18.23%	0.697%
31	7.122	884	886	890	rBV2	304	274	16.60%	0.635%
32	7.402	930	932	934	rBV3	308	340	20.59%	0.788%
33	7.634	965	970	976	rVB4	622	1437	87.04%	3.329%
34	7.713	976	983	985	rBV4	893	1651	100.00%	3.825%
35	8.049	1035	1038	1040	rBV2	517	749	45.37%	1.735%
36	8.079	1042	1043	1045	rVB	659	285	17.26%	0.660%

Data Path : Z:\voasrv\HPCHEM1\MSVOA\_Y\Data\VY013125\  
 Data File : VY021014.D  
 Acq On : 31 Jan 2025 16:53  
 Operator : SY/MD  
 Sample : Q1254-01  
 Misc : 5.05g/5.0mL/MSVOA\_Y/SOIL/A  
 ALS Vial : 1 Sample Multiplier: 1

Instrument :  
 MSVOA\_Y  
 ClientSampleId :  
 OK-02-01312025

Integration Parameters: RTEINT.P

Integrator: RTE  
 Smoothing : ON  
 Sampling : 1  
 Start Thrs: 0.2  
 Stop Thrs : 0

Filtering: 5  
 Min Area: 3 % of largest Peak  
 Max Peaks: 100  
 Peak Location: TOP

If leading or trailing edge < 100 prefer < Baseline drop else tangent >  
 Peak separation: 5

Method : Z:\voasrv\HPCHEM1\MSVOA\_Y\methods\82Y013025S.M  
 Title : SW846 8260

37	8.366	1086	1090	1093	rBV	220	282	17.08%	0.653%
38	8.622	1128	1132	1135	rBV3	740	1044	63.23%	2.418%
39	8.744	1150	1152	1155	rBV	203	296	17.93%	0.686%
40	8.939	1179	1184	1186	rBV3	207	277	16.78%	0.642%
41	9.433	1263	1265	1268	rVB2	440	350	21.20%	0.811%
42	9.487	1271	1274	1278	rVB2	310	515	31.19%	1.193%
43	9.530	1280	1281	1284	rBV2	290	347	21.02%	0.804%
44	9.676	1303	1305	1306	rBV	430	298	18.05%	0.690%
45	9.780	1317	1322	1328	rBV3	128	325	19.69%	0.753%
46	9.908	1338	1343	1344	rBV3	274	304	18.41%	0.704%
47	10.109	1372	1376	1381	rVB3	869	1509	91.40%	3.496%
48	10.176	1384	1387	1389	rBV2	397	422	25.56%	0.978%
49	10.237	1393	1397	1399	rBV3	340	421	25.50%	0.975%
50	10.634	1461	1462	1466	rBV2	248	290	17.57%	0.672%
51	10.810	1488	1491	1493	rBV3	258	286	17.32%	0.663%
52	10.975	1515	1518	1520	rBV2	197	300	18.17%	0.695%
53	11.073	1531	1534	1537	rBV3	299	388	23.50%	0.899%
54	11.140	1542	1545	1547	rVB3	271	285	17.26%	0.660%
55	11.158	1547	1548	1551	rBV2	242	287	17.38%	0.665%
56	11.420	1587	1591	1594	rVV4	584	900	54.51%	2.085%
57	11.463	1594	1598	1600	rVV3	262	424	25.68%	0.982%
58	11.664	1628	1631	1634	rBV2	230	314	19.02%	0.727%
59	11.725	1639	1641	1645	rVB2	325	267	16.17%	0.618%
60	11.822	1655	1657	1660	rVV3	286	270	16.35%	0.625%
61	11.877	1663	1666	1668	rBV2	421	407	24.65%	0.943%
62	12.334	1740	1741	1745	rVB2	251	284	17.20%	0.658%
63	12.475	1762	1764	1769	rVB3	188	306	18.53%	0.709%
64	12.645	1787	1792	1794	rVB2	247	381	23.08%	0.883%
65	12.828	1820	1822	1826	rVB2	279	307	18.59%	0.711%
66	12.865	1826	1828	1832	rBV3	371	374	22.65%	0.866%
67	13.225	1885	1887	1891	rVB2	263	284	17.20%	0.658%
68	13.255	1891	1892	1894	rBV	433	312	18.90%	0.723%
69	13.304	1898	1900	1902	rVV3	355	345	20.90%	0.799%
70	13.346	1906	1907	1910	rVV3	666	459	27.80%	1.063%
71	13.383	1912	1913	1917	rVB	341	296	17.93%	0.686%
72	13.706	1962	1966	1967	rBV2	188	264	15.99%	0.612%
73	13.828	1985	1986	1990	rVB3	244	273	16.54%	0.632%
74	13.871	1990	1993	1995	rBV3	211	273	16.54%	0.632%
75	14.023	2017	2018	2023	rVB	247	355	21.50%	0.822%
76	14.090	2028	2029	2032	rBV	374	281	17.02%	0.651%

Data Path : Z:\voasrv\HPCHEM1\MSVOA\_Y\Data\VY013125\  
 Data File : VY021014.D  
 Acq On : 31 Jan 2025 16:53  
 Operator : SY/MD  
 Sample : Q1254-01  
 Misc : 5.05g/5.0mL/MSVOA\_Y/SOIL/A  
 ALS Vial : 1 Sample Multiplier: 1

Instrument :  
 MSVOA\_Y  
 ClientSampleId :  
 OK-02-01312025

Integration Parameters: RTEINT.P  
 Integrator: RTE  
 Smoothing : ON  
 Sampling : 1  
 Start Thrs: 0.2  
 Stop Thrs : 0  
 Filtering: 5  
 Min Area: 3 % of largest Peak  
 Max Peaks: 100  
 Peak Location: TOP

If leading or trailing edge < 100 prefer < Baseline drop else tangent >  
 Peak separation: 5

Method : Z:\voasrv\HPCHEM1\MSVOA\_Y\methods\82Y013025S.M  
 Title : SW846 8260

77	14.230	2049	2052	2055	rBV2	291	289	17.50%	0.669%
78	14.438	2082	2086	2088	rBV	259	357	21.62%	0.827%
79	14.529	2098	2101	2102	rVB2	423	285	17.26%	0.660%
80	14.590	2109	2111	2115	rBV	396	407	24.65%	0.943%
81	14.840	2147	2152	2153	rBV3	373	430	26.04%	0.996%
82	15.084	2190	2192	2194	rVB	507	336	20.35%	0.778%
83	15.114	2194	2197	2200	rBV3	379	634	38.40%	1.469%
84	15.157	2203	2204	2211	rVB4	334	639	38.70%	1.480%
85	15.419	2245	2247	2250	rVB3	282	318	19.26%	0.737%
86	15.450	2250	2252	2256	rBV2	301	480	29.07%	1.112%
87	15.511	2260	2262	2265	rBV3	408	407	24.65%	0.943%
88	15.547	2265	2268	2270	rVV2	394	423	25.62%	0.980%
89	15.596	2274	2276	2279	rVB3	431	471	28.53%	1.091%
90	15.669	2286	2288	2290	rBV2	415	447	27.07%	1.035%
91	15.736	2294	2299	2301	rVB4	340	652	39.49%	1.510%
92	15.956	2332	2335	2337	rBV3	289	314	19.02%	0.727%
93	15.998	2338	2342	2344	rVB2	264	370	22.41%	0.857%
94	16.078	2352	2355	2358	rBV2	466	640	38.76%	1.483%
95	16.212	2376	2377	2381	rBV2	505	473	28.65%	1.096%
96	16.261	2383	2385	2388	rBV3	323	377	22.83%	0.873%
97	16.309	2391	2393	2395	rBV	516	400	24.23%	0.927%
98	16.553	2431	2433	2435	rBV2	311	330	19.99%	0.764%
99	16.639	2443	2447	2448	rBV3	549	663	40.16%	1.536%
100	16.761	2464	2467	2470	rBV2	506	519	31.44%	1.202%

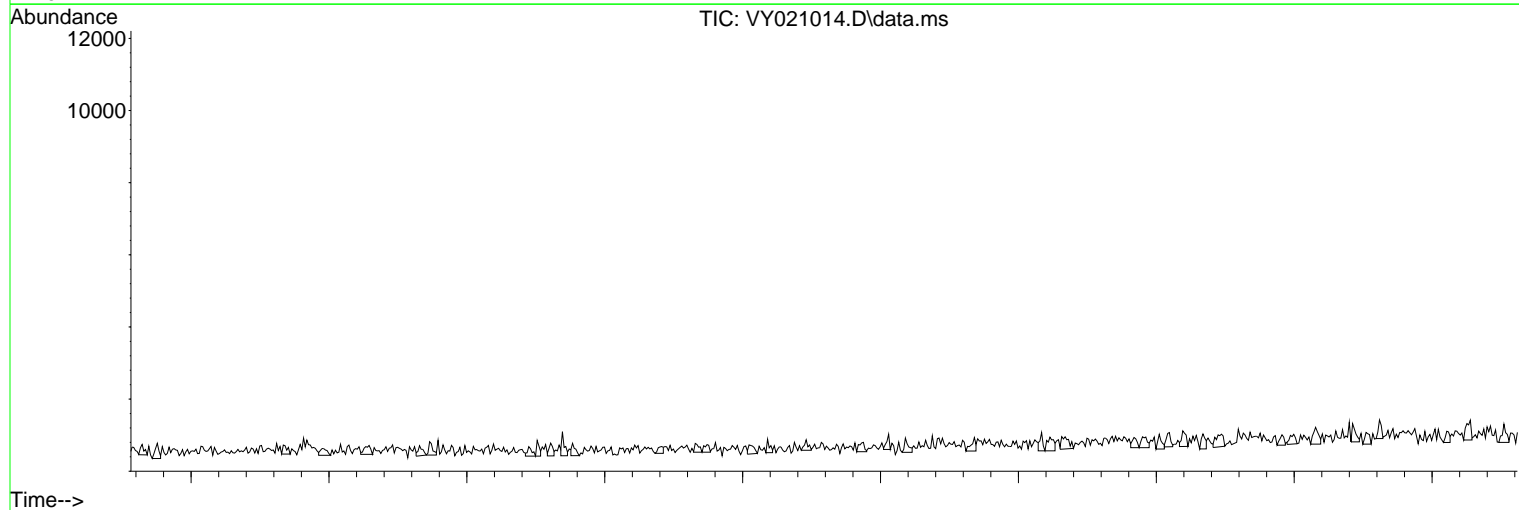
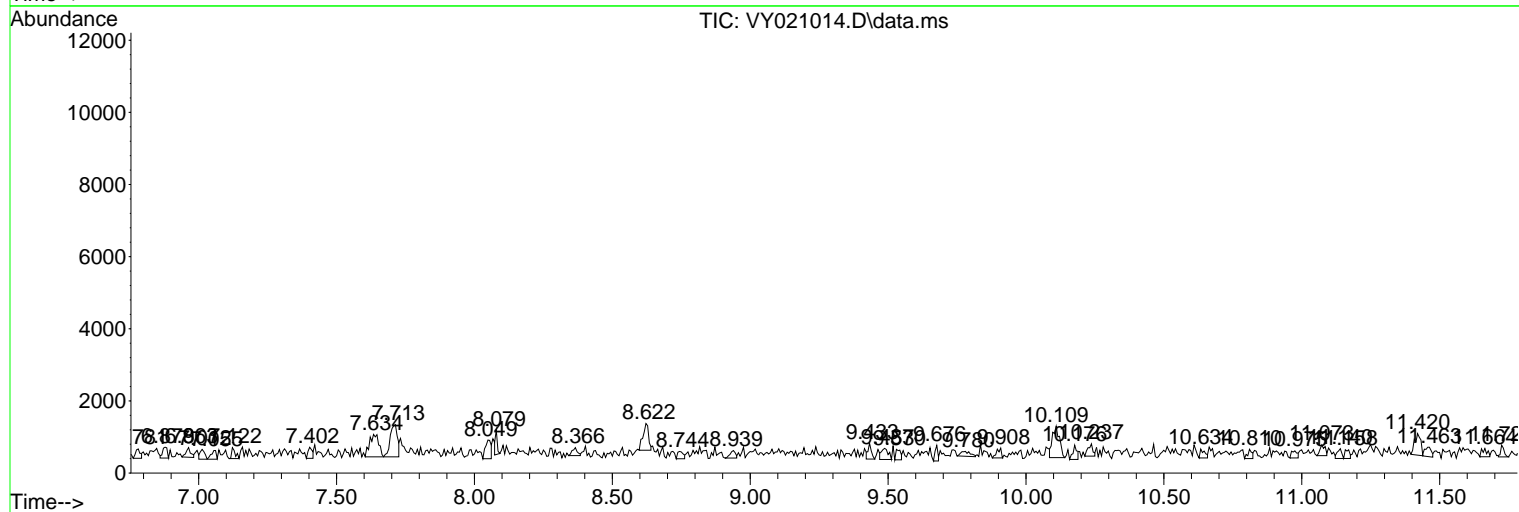
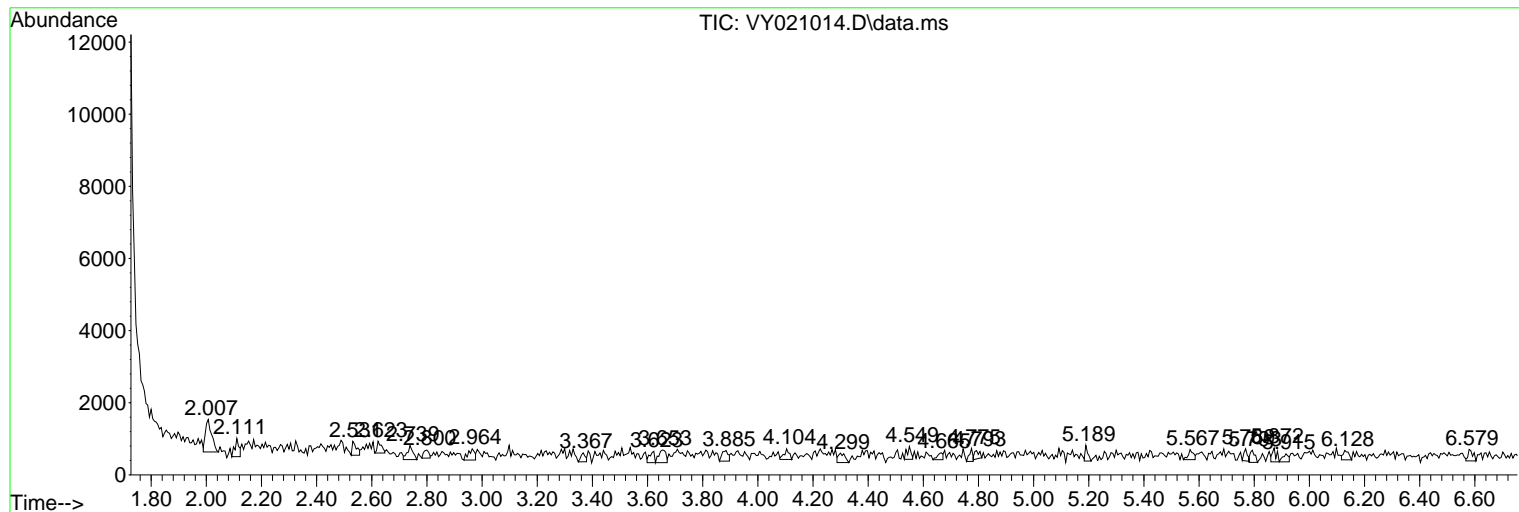
Sum of corrected areas: 43169

Data Path : Z:\voasrv\HPCHEM1\MSVOA\_Y\Data\VY013125\  
 Data File : VY021014.D  
 Acq On : 31 Jan 2025 16:53  
 Operator : SY/MD  
 Sample : Q1254-01  
 Misc : 5.05g/5.0mL/MSVOA\_Y/SOIL/A  
 ALS Vial : 1 Sample Multiplier: 1

Instrument :  
 MSVOA\_Y  
 ClientSampleId :  
 OK-02-01312025

Quant Method : Z:\voasrv\HPCHEM1\MSVOA\_Y\methods\82Y013025S.M  
 Quant Title : SW846 8260

TIC Library : C:\Database\NIST20.L  
 TIC Integration Parameters: LSCINT.P



Data Path : Z:\voasrv\HPCHEM1\MSVOA\_Y\Data\VY013125\  
 Data File : VY021014.D  
 Acq On : 31 Jan 2025 16:53  
 Operator : SY/MD  
 Sample : Q1254-01  
 Misc : 5.05g/5.0mL/MSVOA\_Y/SOIL/A  
 ALS Vial : 1 Sample Multiplier: 1

Instrument :  
 MSVOA\_Y  
 ClientSampleId :  
 OK-02-01312025

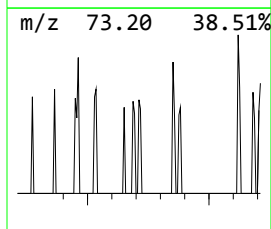
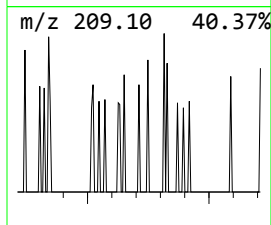
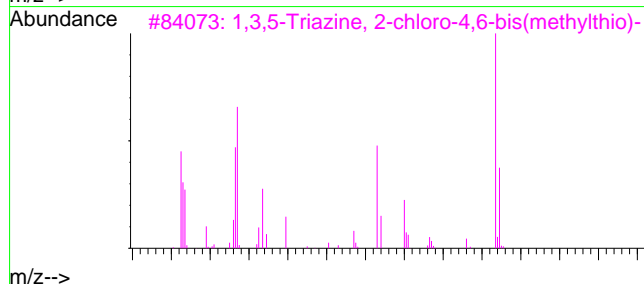
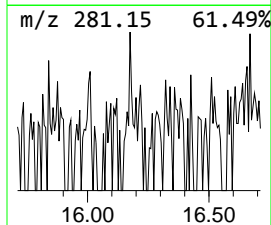
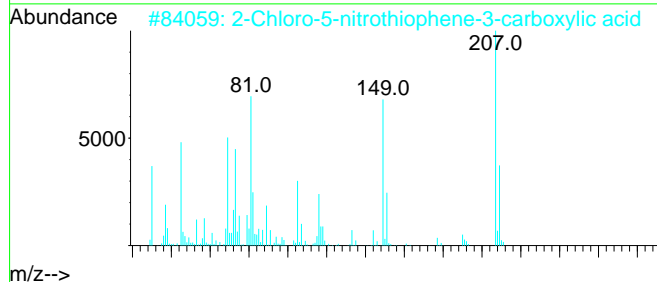
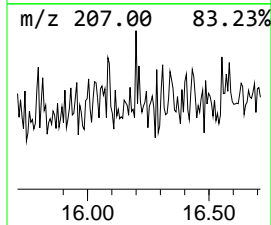
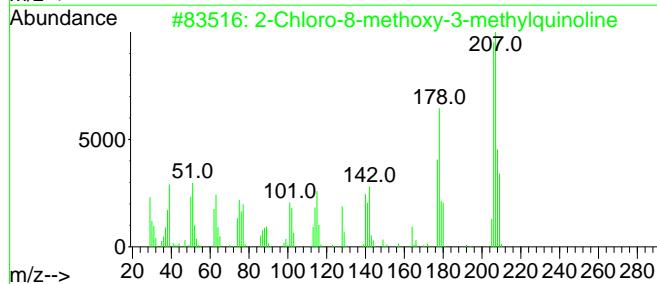
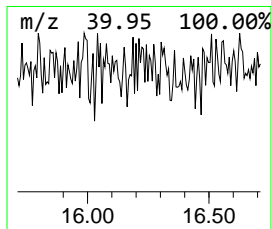
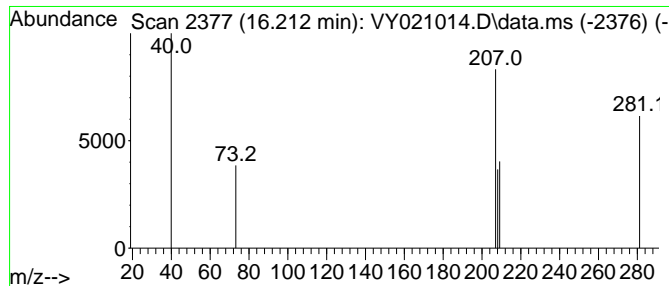
Quant Method : Z:\voasrv\HPCHEM1\MSVOA\_Y\methods\82Y013025S.M  
 Quant Title : SW846 8260

TIC Library : C:\Database\NIST20.L  
 TIC Integration Parameters: LSCINT.P

\*\*\*\*\*  
 Peak Number 8 unknown16.212 Concentration Rank 8

R.T.	EstConc	Area	Relative to ISTD	R.T.
16.212	51.53 ug/l	473	1,4-Dichlorobenzene-d4	13.347

Hit#	of	Tentative ID	MW	MolForm	CAS#	Qual
1	5	2-Chloro-8-methoxy-3-methylquino...	207	C11H10ClNO	132118-31-1	45
2		2-Chloro-5-nitrothiophene-3-carb...	207	C5H2ClNO4S	1000460-11-4	9
3		1,3,5-Triazine, 2-chloro-4,6-bis...	207	C5H6ClN3S2	004407-40-3	9
4		Pyridine, 1,2,3,6-tetrahydro-1-m...	207	C12H14ClN	005048-08-8	9
5		(5S,6aR,10aS)-5-Propyldecahydrod...	208	C13H24N2	172139-30-9	5



Data Path : Z:\voasrv\HPCHEM1\MSVOA\_Y\Data\VY013125\  
Data File : VY021014.D  
Acq On : 31 Jan 2025 16:53  
Operator : SY/MD  
Sample : Q1254-01  
Misc : 5.05g/5.0mL/MSVOA\_Y/SOIL/A  
ALS Vial : 1 Sample Multiplier: 1

Instrument :  
MSVOA\_Y  
ClientSampleId :  
OK-02-01312025

Quant Method : Z:\voasrv\HPCHEM1\MSVOA\_Y\methods\82Y013025S.M  
Quant Title : SW846 8260

TIC Library : C:\Database\NIST0.L  
TIC Integration Parameters: LSCINT.P

TIC Top Hit name	RT	EstConc	Units	Response	--Internal Standard--			
					#	RT	Resp	Conc
unknown16.212	16.212	51.5	ug/l	473	4	13.347	459	50.0