

Data Path : Z:\voasrv\HPCHEM1\MSVOA_Y\Data\VY020722\
 Data File : VY007422.D
 Acq On : 07 Feb 2022 18:50
 Operator : SY/MD
 Sample : N1421-07
 Misc : 6.54g/5.0mL/MSVOA_Y/SOIL
 ALS Vial : 23 Sample Multiplier: 1

Instrument :
 MSVOA_Y
 ClientSampleId :
 SB-7

Quant Time: Feb 08 00:41:47 2022
 Quant Method : Z:\voasrv\HPCHEM1\MSVOA_Y\methods\82Y020222S.M
 Quant Title : SW846 8260
 QLast Update : Thu Feb 03 04:36:48 2022
 Response via : Initial Calibration

Compound	R.T.	QIon	Response	Conc	Units	Dev(Min)

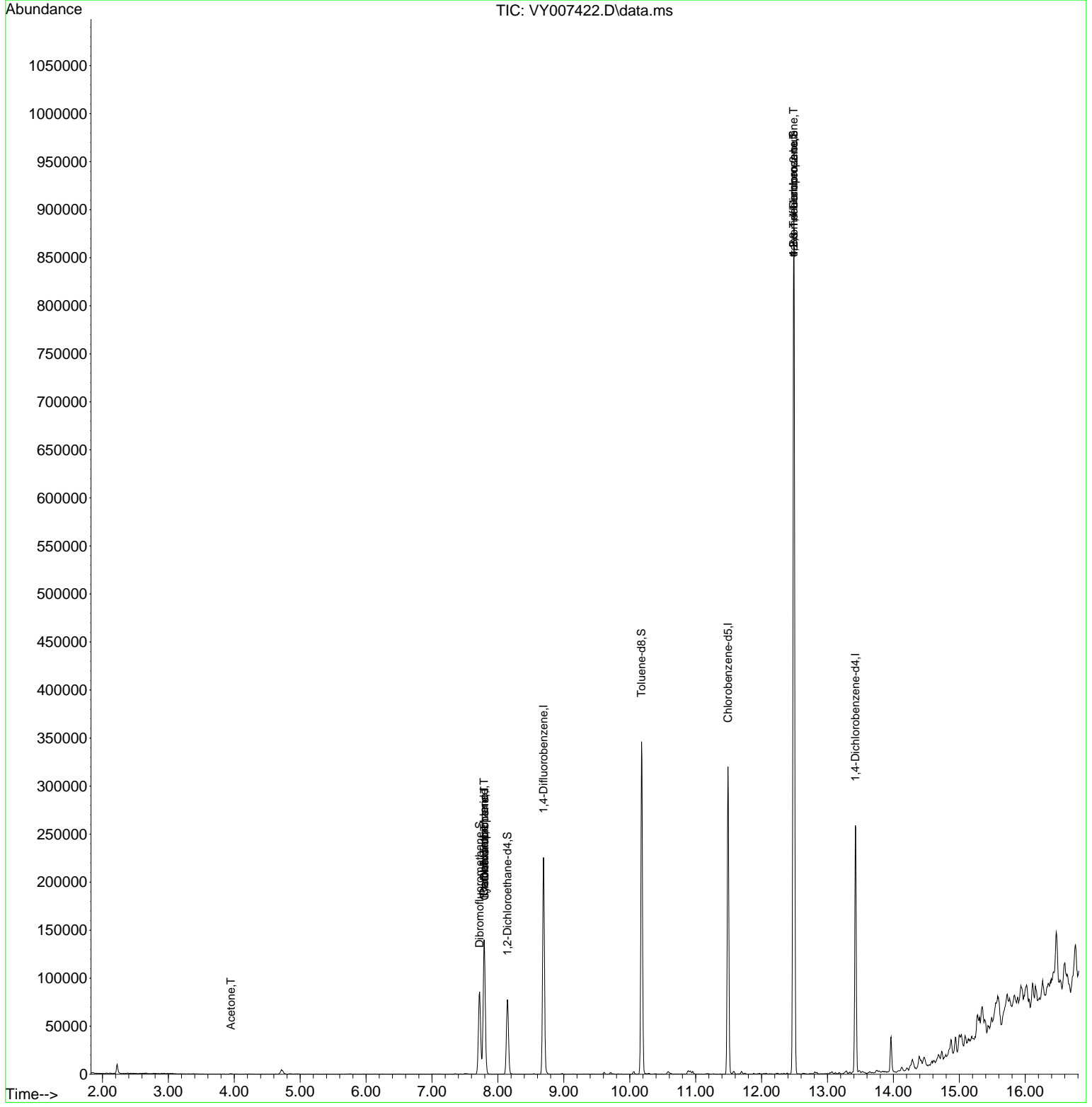
Internal Standards						
1) Pentafluorobenzene	7.789	168	102357	50.000	ug/l	0.00
34) 1,4-Difluorobenzene	8.691	114	186242	50.000	ug/l	0.00
63) Chlorobenzene-d5	11.490	117	167544	50.000	ug/l	0.00
72) 1,4-Dichlorobenzene-d4	13.422	152	63080	50.000	ug/l	0.00
System Monitoring Compounds						
33) 1,2-Dichloroethane-d4	8.143	65	61945	52.614	ug/l	0.00
Spiked Amount	50.000	Range	50 - 163	Recovery	=	105.220%
35) Dibromofluoromethane	7.722	113	59700	49.919	ug/l	0.00
Spiked Amount	50.000	Range	54 - 147	Recovery	=	99.840%
50) Toluene-d8	10.179	98	224934	50.909	ug/l	0.00
Spiked Amount	50.000	Range	49 - 140	Recovery	=	101.820%
62) 4-Bromofluorobenzene	12.483	95	75548	50.306	ug/l	0.00
Spiked Amount	50.000	Range	25 - 144	Recovery	=	100.620%
Target Compounds						
					Qvalue	
3) Chloromethane	2.113	50	356	Below Cal	#	44
11) Tert butyl alcohol	4.960	59	708	Below Cal	#	77
16) Acetone	3.948	43	782	2.045	ug/l #	87
20) Methylene Chloride	4.716	84	2107	Below Cal	#	84
31) Cyclohexane	7.795	56	2427	1.056	ug/l #	20
36) 1,1-Dichloropropene	7.795	75	8258	3.950	ug/l #	52
38) Carbon Tetrachloride	7.789	117	11187	5.093	ug/l #	14
76) 1,2,3-Trichloropropane	12.483	75	48103	64.146	ug/l #	100
81) trans-1,4-Dichloro-2-b...	12.483	75	48103	128.510	ug/l #	10

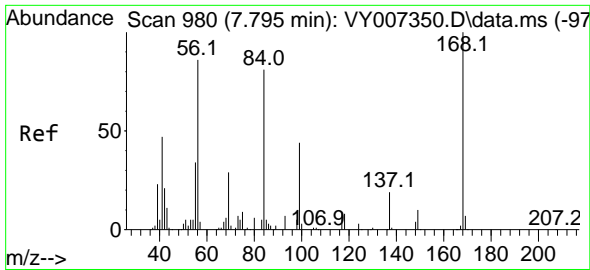
(#) = qualifier out of range (m) = manual integration (+) = signals summed

Data Path : Z:\voasrv\HPCHEM1\MSVOA_Y\Data\VY020722\
 Data File : VY007422.D
 Acq On : 07 Feb 2022 18:50
 Operator : SY/MD
 Sample : N1421-07
 Misc : 6.54g/5.0mL/MSVOA_Y/SOIL
 ALS Vial : 23 Sample Multiplier: 1

Instrument :
 MSVOA_Y
ClientSampleId :
 SB-7

Quant Time: Feb 08 00:41:47 2022
 Quant Method : Z:\voasrv\HPCHEM1\MSVOA_Y\methods\82Y020222S.M
 Quant Title : SW846 8260
 QLast Update : Thu Feb 03 04:36:48 2022
 Response via : Initial Calibration

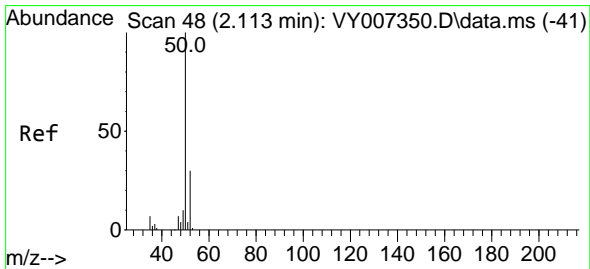
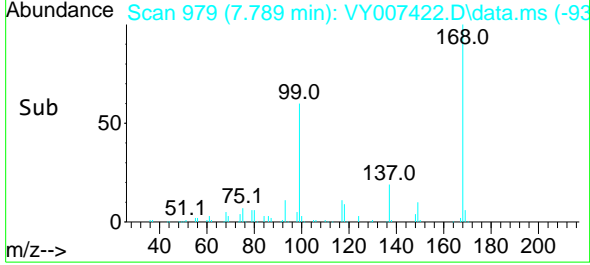
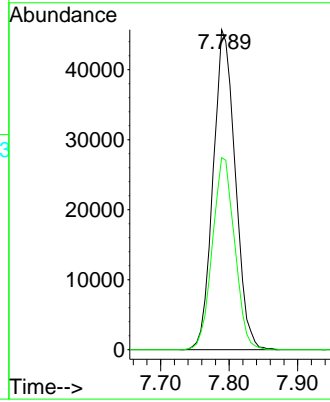
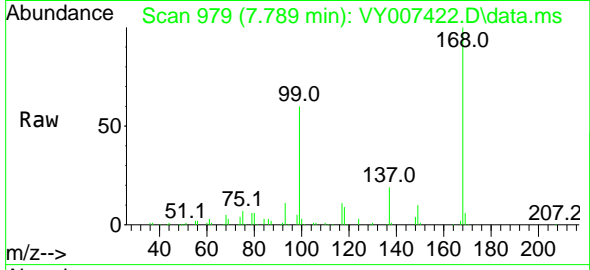




#1
 Pentafluorobenzene
 Concen: 50.000 ug/l
 RT: 7.789 min Scan# 91
 Delta R.T. -0.006 min
 Lab File: VY007422.D
 Acq: 07 Feb 2022 18:50

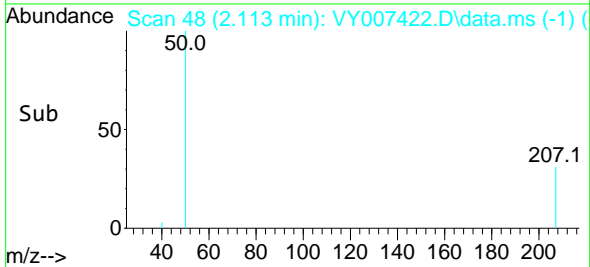
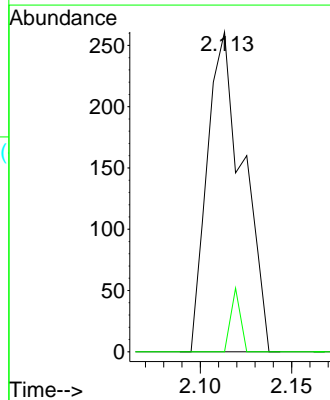
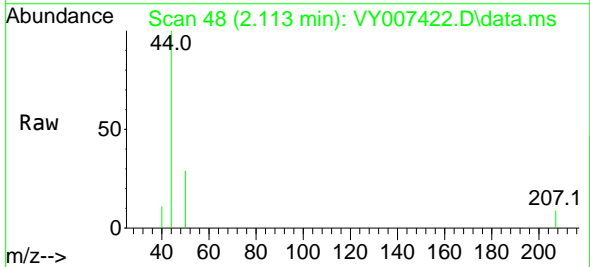
Instrument :
 MSVOA_Y
 ClientSampleId :
 SB-7

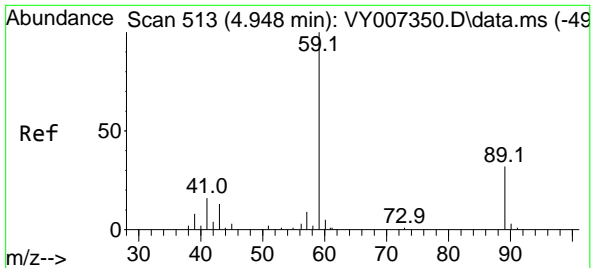
Tgt Ion:168 Resp: 102357
 Ion Ratio Lower Upper
 168 100
 99 60.0 46.9 70.3



#3
 Chloromethane
 Concen: Below Cal
 RT: 2.113 min Scan# 48
 Delta R.T. 0.000 min
 Lab File: VY007422.D
 Acq: 07 Feb 2022 18:50

Tgt Ion: 50 Resp: 356
 Ion Ratio Lower Upper
 50 100
 52 0.0 24.6 37.0#

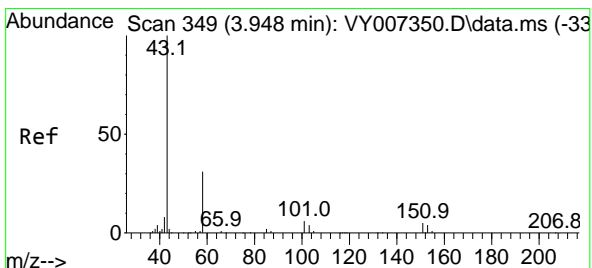
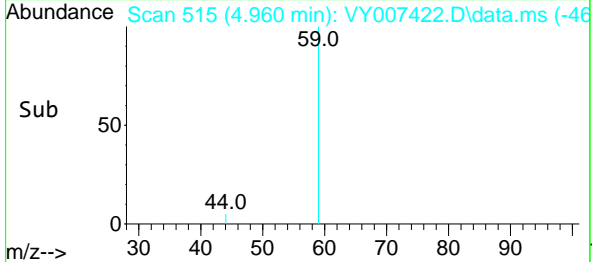
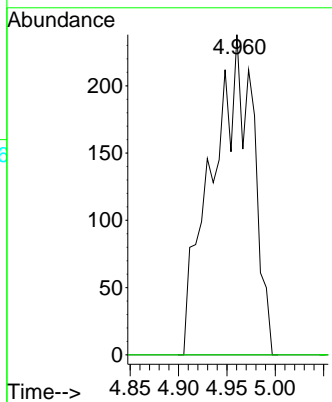
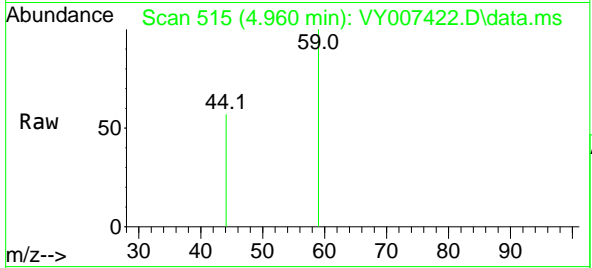




#11
 Tert butyl alcohol
 Concen: Below Cal
 RT: 4.960 min Scan# 511
 Delta R.T. 0.012 min
 Lab File: VY007422.D
 Acq: 07 Feb 2022 18:50

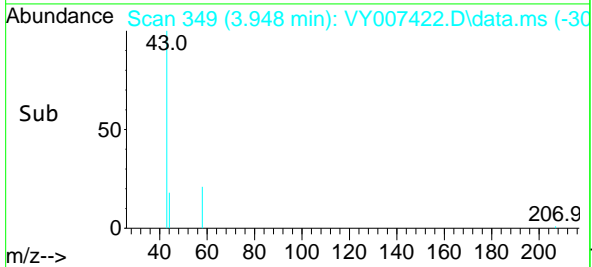
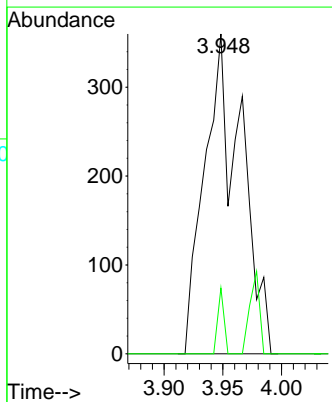
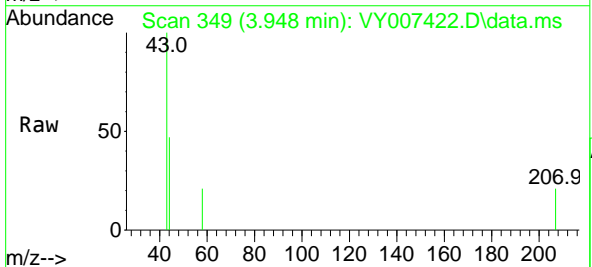
Instrument : MSVOA_Y
 ClientSampleId : SB-7

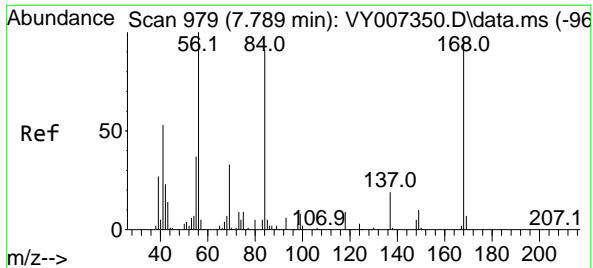
Tgt Ion: 59 Resp: 708
 Ion Ratio Lower Upper
 59 100
 57 0.0 6.4 9.6#



#16
 Acetone
 Concen: 2.045 ug/l
 RT: 3.948 min Scan# 349
 Delta R.T. 0.000 min
 Lab File: VY007422.D
 Acq: 07 Feb 2022 18:50

Tgt Ion: 43 Resp: 782
 Ion Ratio Lower Upper
 43 100
 58 20.6 22.0 33.0#



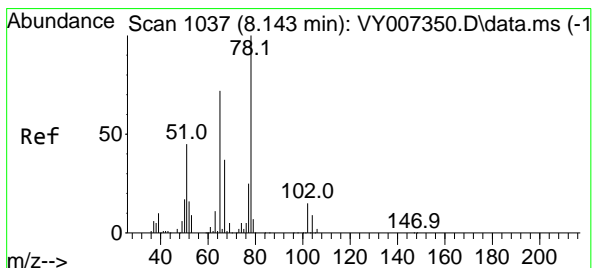
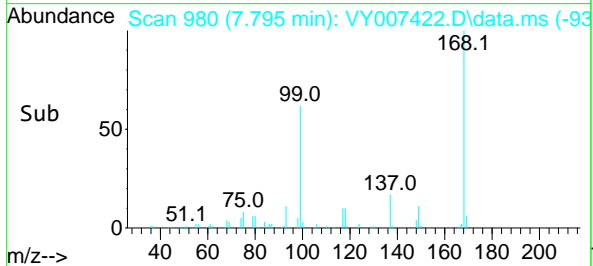
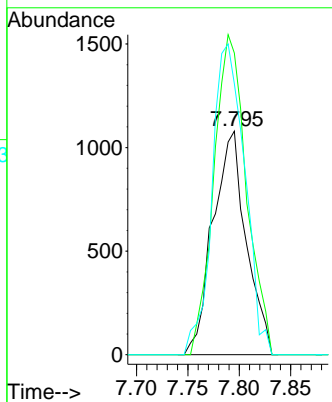
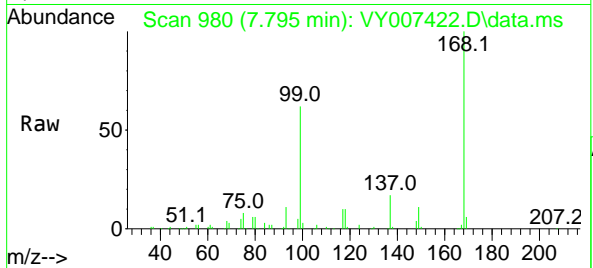


#31
 Cyclohexane
 Concen: 1.056 ug/l
 RT: 7.795 min Scan# 91
 Delta R.T. 0.006 min
 Lab File: VY007422.D
 Acq: 07 Feb 2022 18:50

Instrument :
 MSVOA_Y
 ClientSampleId :
 SB-7

Tgt Ion: 56 Resp: 2427

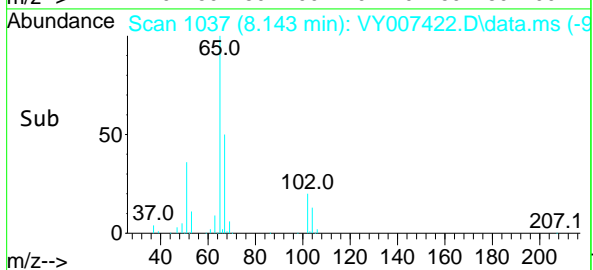
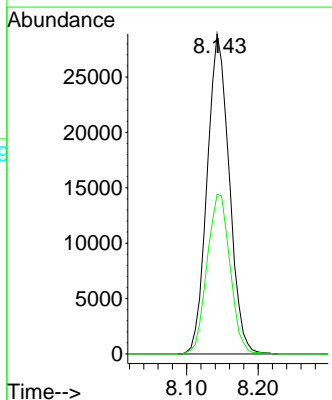
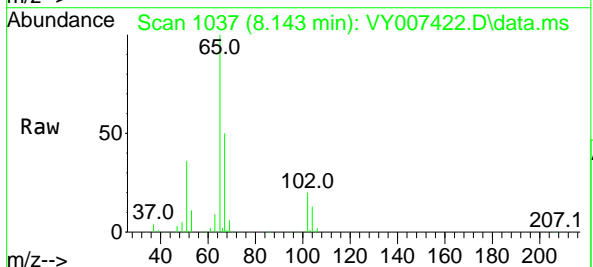
Ion	Ratio	Lower	Upper
56	100		
69	134.9	26.7	40.1#
84	121.2	67.2	100.8#

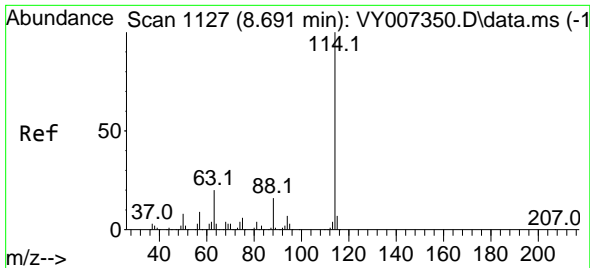


#33
 1,2-Dichloroethane-d4
 Concen: 52.614 ug/l
 RT: 8.143 min Scan# 1037
 Delta R.T. 0.000 min
 Lab File: VY007422.D
 Acq: 07 Feb 2022 18:50

Tgt Ion: 65 Resp: 61945

Ion	Ratio	Lower	Upper
65	100		
67	51.9	0.0	99.4

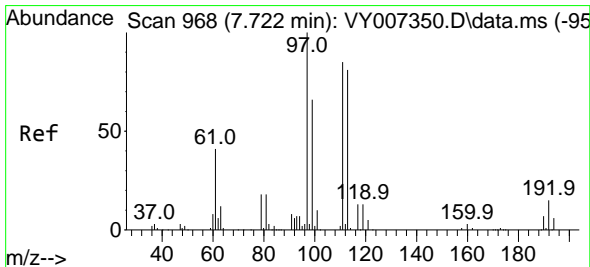
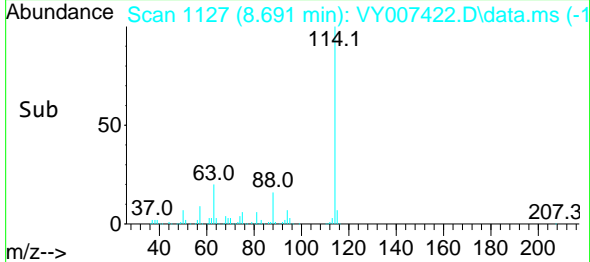
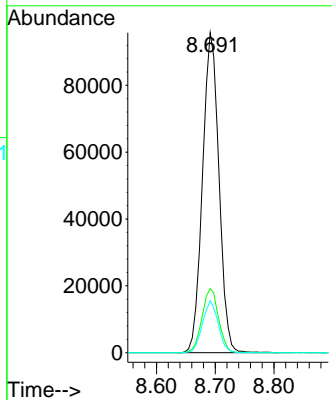
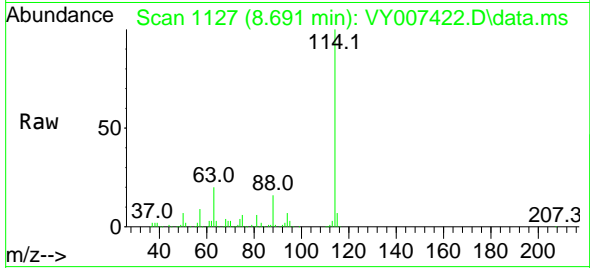




#34
 1,4-Difluorobenzene
 Concen: 50.000 ug/l
 RT: 8.691 min Scan# 1127
 Delta R.T. 0.000 min
 Lab File: VY007422.D
 Acq: 07 Feb 2022 18:50

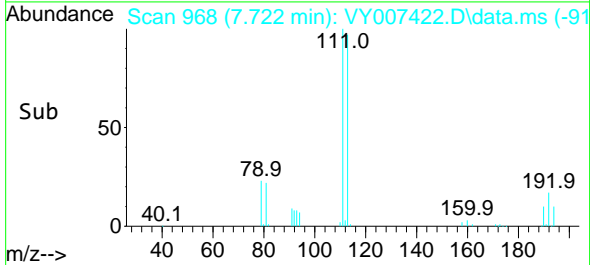
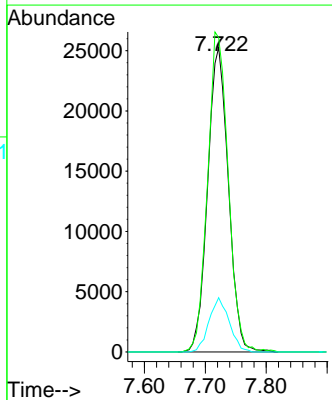
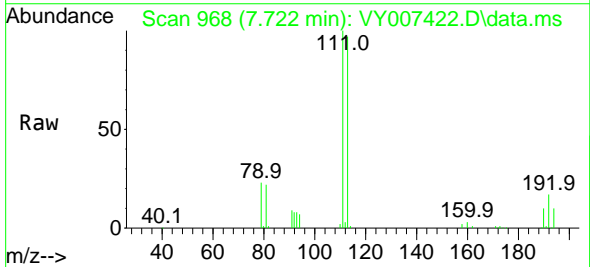
Instrument : MSVOA_Y
 ClientSampleId : SB-7

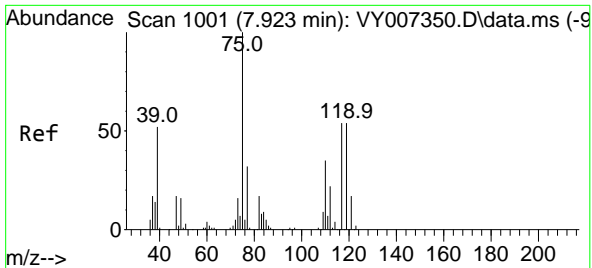
Tgt Ion	Resp	Lower	Upper
114	186242		
63	20.0	0.0	43.2
88	16.2	0.0	31.8



#35
 Dibromofluoromethane
 Concen: 49.919 ug/l
 RT: 7.722 min Scan# 968
 Delta R.T. 0.000 min
 Lab File: VY007422.D
 Acq: 07 Feb 2022 18:50

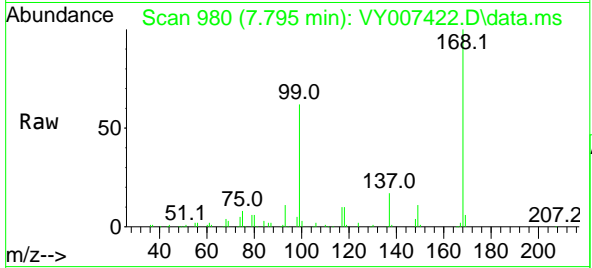
Tgt Ion	Resp	Lower	Upper
113	59700		
111	104.3	82.6	124.0
192	17.4	17.6	26.4#



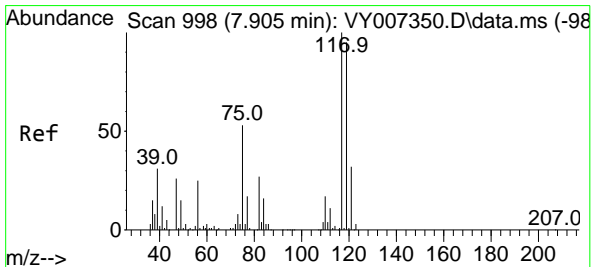
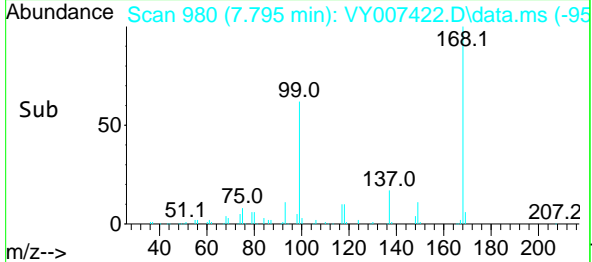
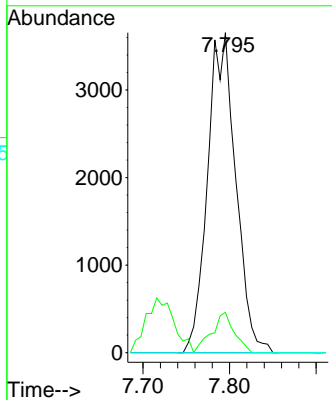


#36
 1,1-Dichloropropene
 Concen: 3.950 ug/l
 RT: 7.795 min Scan# 918
 Delta R.T. -0.128 min
 Lab File: VY007422.D
 Acq: 07 Feb 2022 18:50

Instrument : MSVOA_Y
 ClientSampleId : SB-7

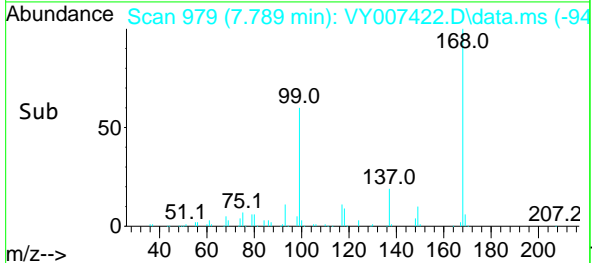
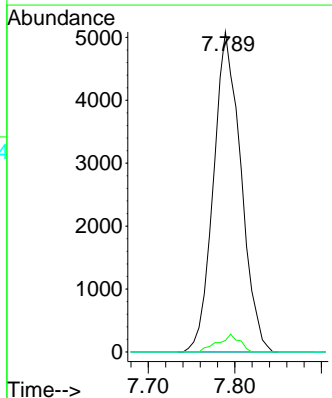
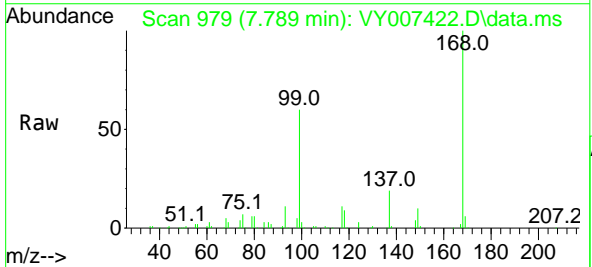


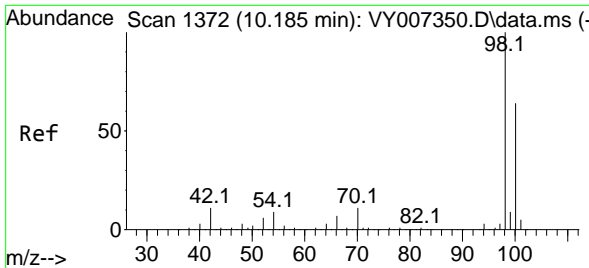
Tgt Ion: 75 Resp: 8258
 Ion Ratio Lower Upper
 75 100
 110 10.1 17.1 51.2#
 77 0.0 24.4 36.6#



#38
 Carbon Tetrachloride
 Concen: 5.093 ug/l
 RT: 7.789 min Scan# 979
 Delta R.T. -0.116 min
 Lab File: VY007422.D
 Acq: 07 Feb 2022 18:50

Tgt Ion: 117 Resp: 11187
 Ion Ratio Lower Upper
 117 100
 119 3.6 77.9 116.9#
 121 0.0 24.8 37.2#

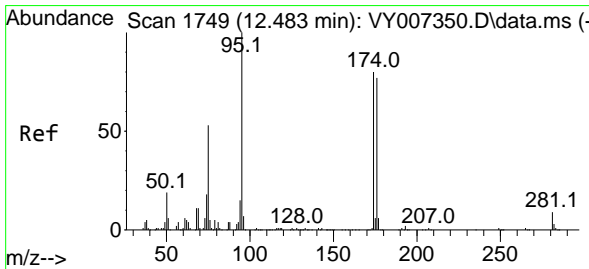
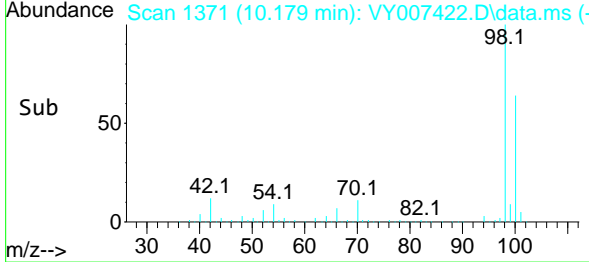
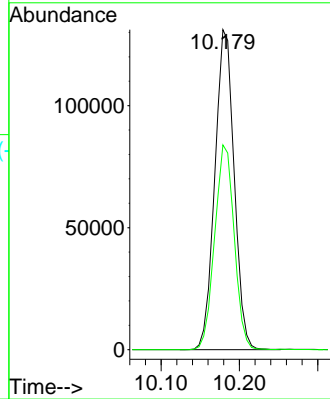
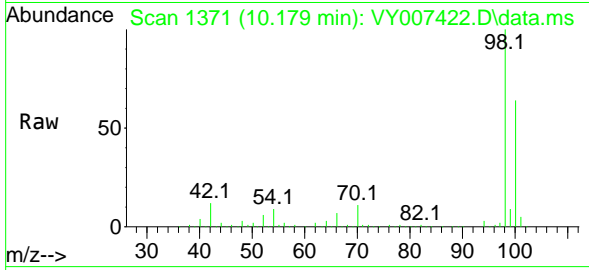




#50
 Toluene-d8
 Concen: 50.909 ug/l
 RT: 10.179 min Scan# 11
 Delta R.T. -0.006 min
 Lab File: VY007422.D
 Acq: 07 Feb 2022 18:50

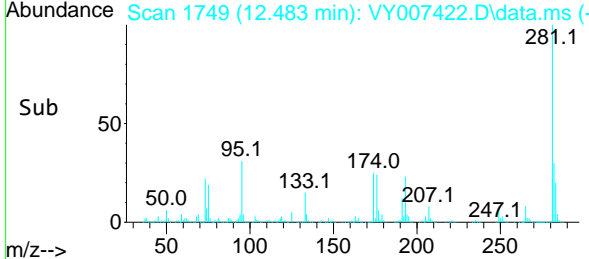
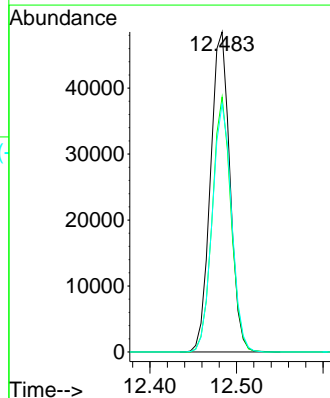
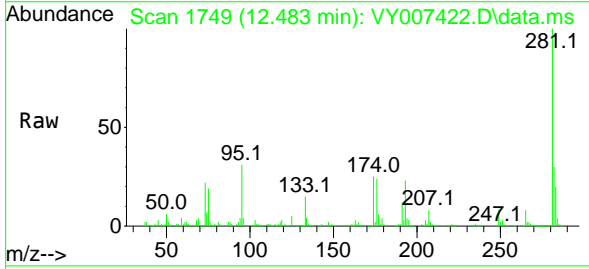
Instrument :
 MSVOA_Y
 ClientSampleId :
 SB-7

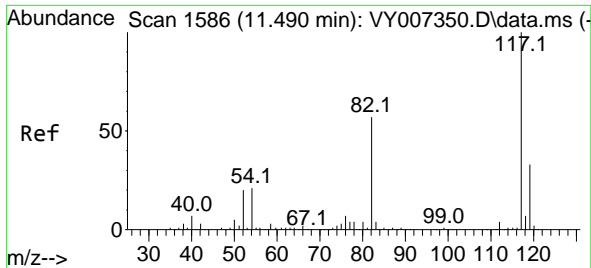
Tgt Ion: 98 Resp: 224934
 Ion Ratio Lower Upper
 98 100
 100 64.7 50.2 75.2



#62
 4-Bromofluorobenzene
 Concen: 50.306 ug/l
 RT: 12.483 min Scan# 1749
 Delta R.T. 0.000 min
 Lab File: VY007422.D
 Acq: 07 Feb 2022 18:50

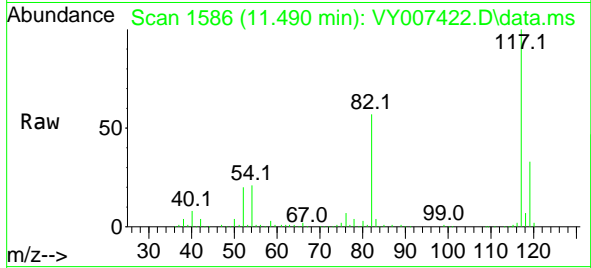
Tgt Ion: 95 Resp: 75548
 Ion Ratio Lower Upper
 95 100
 174 76.8 0.0 177.0
 176 77.3 0.0 175.8



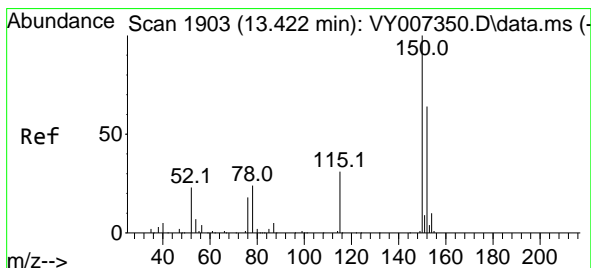
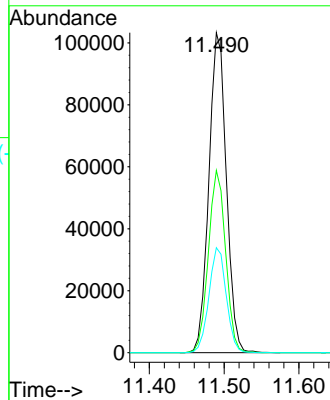
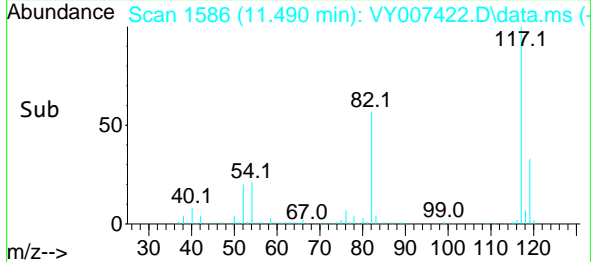


#63
 Chlorobenzene-d5
 Concen: 50.000 ug/l
 RT: 11.490 min Scan# 117
 Delta R.T. 0.000 min
 Lab File: VY007422.D
 Acq: 07 Feb 2022 18:50

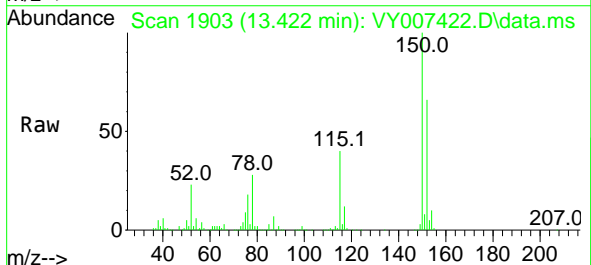
Instrument : MSVOA_Y
 ClientSampleId : SB-7



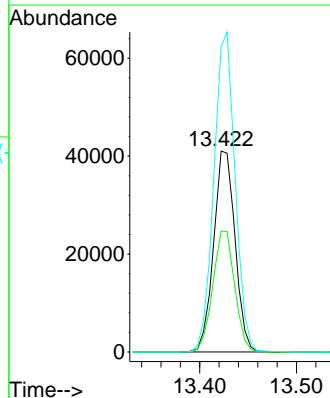
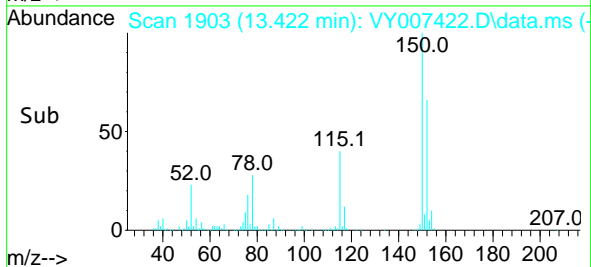
Tgt Ion:117 Resp: 167544
 Ion Ratio Lower Upper
 117 100
 82 56.9 43.0 64.4
 119 32.8 25.4 38.0

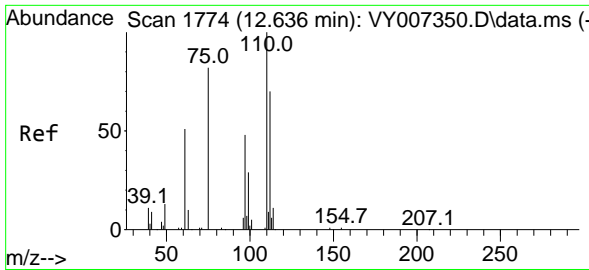


#72
 1,4-Dichlorobenzene-d4
 Concen: 50.000 ug/l
 RT: 13.422 min Scan# 1903
 Delta R.T. 0.000 min
 Lab File: VY007422.D
 Acq: 07 Feb 2022 18:50



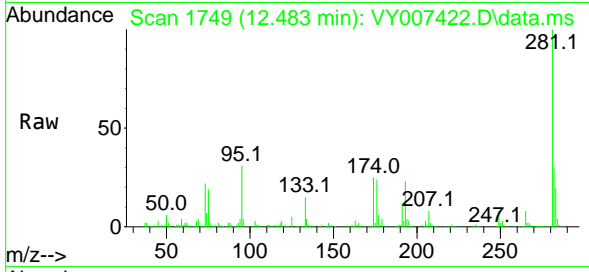
Tgt Ion:152 Resp: 63080
 Ion Ratio Lower Upper
 152 100
 115 61.5 28.2 84.7
 150 157.9 0.0 347.6



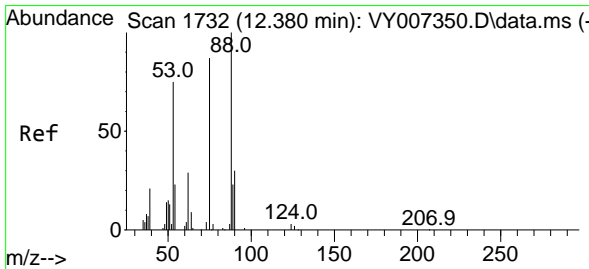
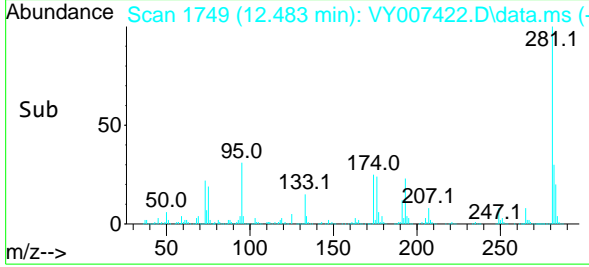
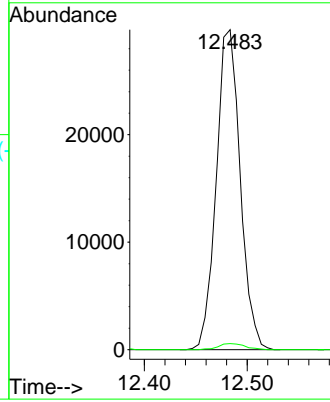


#76
 1,2,3-Trichloropropane
 Concen: 64.146 ug/l
 RT: 12.483 min Scan# 1749
 Delta R.T. -0.152 min
 Lab File: VY007422.D
 Acq: 07 Feb 2022 18:50

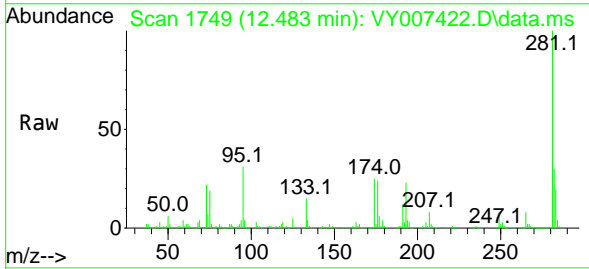
Instrument : MSVOA_Y
 ClientSampleId : SB-7



Tgt Ion: 75 Resp: 48103
 Ion Ratio Lower Upper
 75 100
 77 2.2 0.0 0.0#



#81
 trans-1,4-Dichloro-2-butene
 Concen: 128.510 ug/l
 RT: 12.483 min Scan# 1749
 Delta R.T. 0.104 min
 Lab File: VY007422.D
 Acq: 07 Feb 2022 18:50



Tgt Ion: 75 Resp: 48103
 Ion Ratio Lower Upper
 75 100
 53 0.0 85.3 127.9#
 89 5.2 37.0 55.4#

