

Data Path : Z:\voasrv\HPCHEM1\MSVOA_Y\Data\VY020824\
 Data File : VY017312.D
 Acq On : 08 Feb 2024 14:59
 Operator : SY/MD
 Sample : P1337-13
 Misc : 5.67g/5.0mL/MSVOA_Y/SOIL/A
 ALS Vial : 10 Sample Multiplier: 1

Instrument :
 MSVOA_Y
 ClientSampleId :
 TP-5

Integration Parameters: RTEINT.P

Integrator: RTE
 Smoothing : ON Filtering: 5
 Sampling : 1 Min Area: 3 % of largest Peak
 Start Thrs: 0.2 Max Peaks: 100
 Stop Thrs : 0 Peak Location: TOP

If leading or trailing edge < 100 prefer < Baseline drop else tangent >
 Peak separation: 5

Method : Z:\voasrv\HPCHEM1\MSVOA_Y\methods\82Y020124S.M
 Title : SW846 8260

Signal : TIC: VY017312.D\data.ms

peak #	R.T. min	first scan	max scan	last scan	PK TY	peak height	corr. area	corr. % max.	% of total
1	4.204	381	391	404	rBV2	5876	20005	4.61%	0.806%
2	4.716	464	475	490	rVB	15899	49862	11.49%	2.009%
3	5.747	634	644	656	rVB2	5243	15865	3.65%	0.639%
4	6.990	835	848	857	rBV	4653	16717	3.85%	0.674%
5	7.722	959	968	973	rBV	54120	128475	29.60%	5.176%
6	7.789	973	979	991	rVB	104257	240162	55.33%	9.676%
7	8.142	1027	1037	1049	rVB2	57272	127465	29.36%	5.135%
8	8.691	1119	1127	1137	rBV	187290	362449	83.50%	14.603%
9	9.624	1273	1280	1285	rVB	5460	10641	2.45%	0.429%
10	9.752	1294	1301	1310	rBV4	14148	27975	6.44%	1.127%
11	10.118	1357	1361	1365	rVB	4699	6884	1.59%	0.277%
12	10.185	1365	1372	1379	rBV	217902	366341	84.40%	14.759%
13	10.587	1429	1438	1443	rBV2	3930	7185	1.66%	0.289%
14	10.953	1492	1498	1510	rBV2	14713	30526	7.03%	1.230%
15	11.325	1552	1559	1567	rVB	4568	7884	1.82%	0.318%
16	11.496	1580	1587	1598	rBV	265471	434076	100.00%	17.488%
17	12.343	1719	1726	1733	rVB2	9729	15781	3.64%	0.636%
18	12.489	1743	1750	1761	rBV2	150508	241696	55.68%	9.738%
19	12.825	1799	1805	1812	rBV4	2280	4823	1.11%	0.194%
20	12.898	1812	1817	1823	rVB2	9336	15063	3.47%	0.607%
21	13.190	1860	1865	1871	rBV2	3591	5586	1.29%	0.225%
22	13.428	1895	1904	1911	rBV	216666	336416	77.50%	13.554%
23	13.965	1987	1992	2000	rVB	5918	10199	2.35%	0.411%

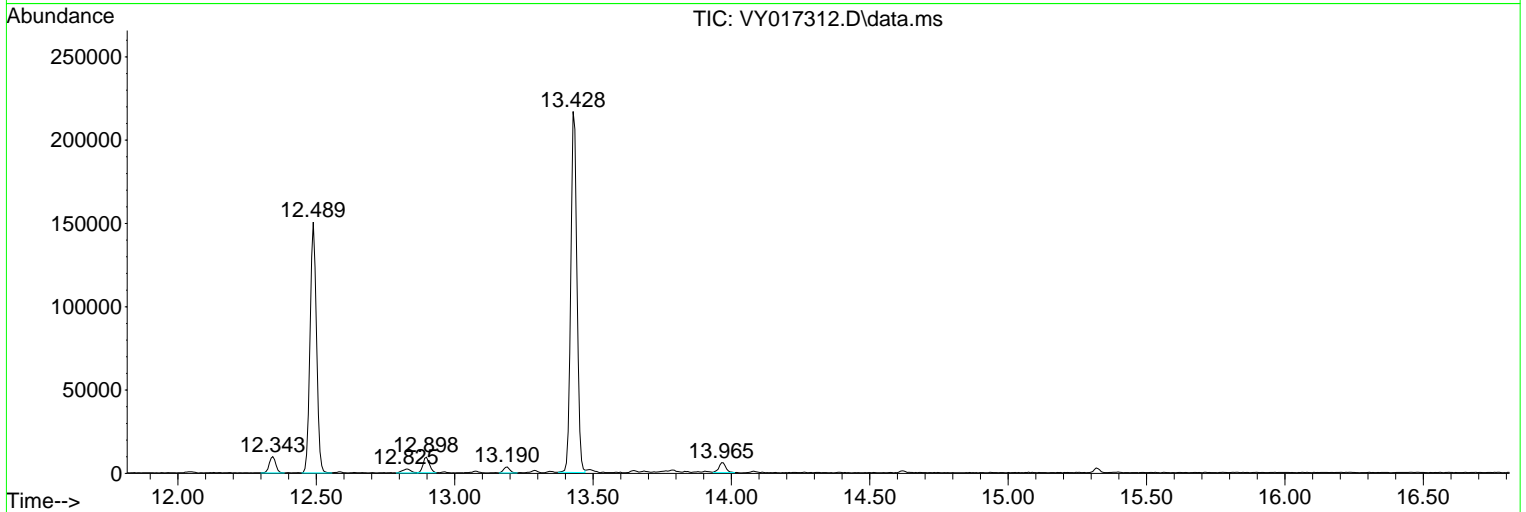
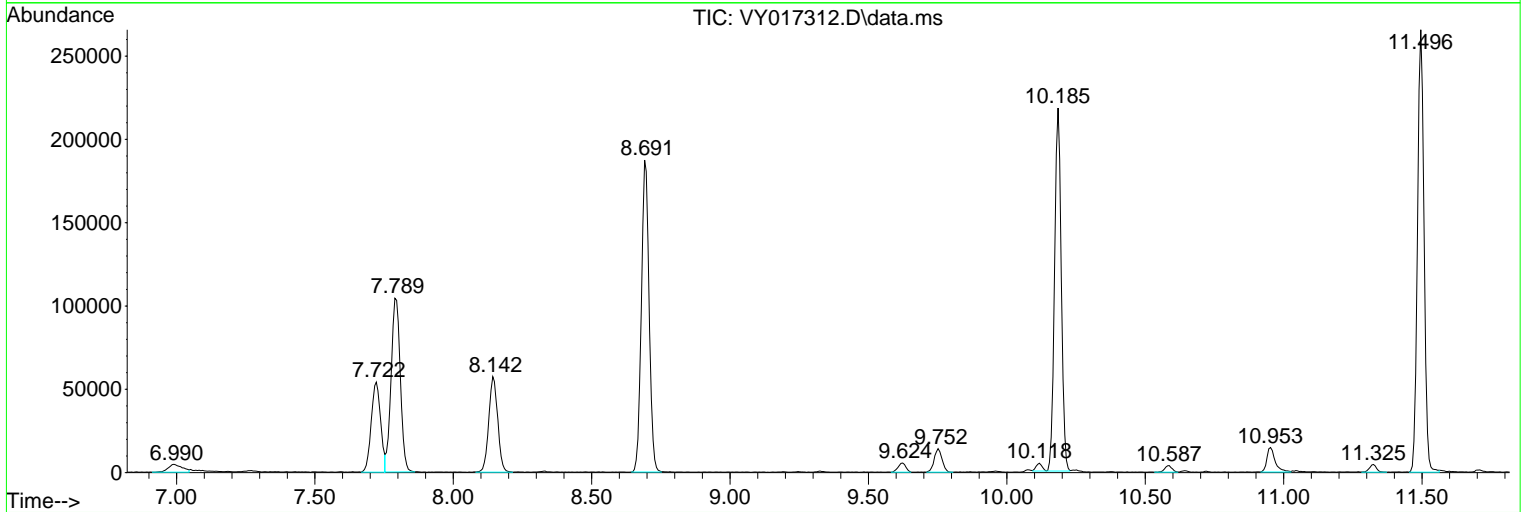
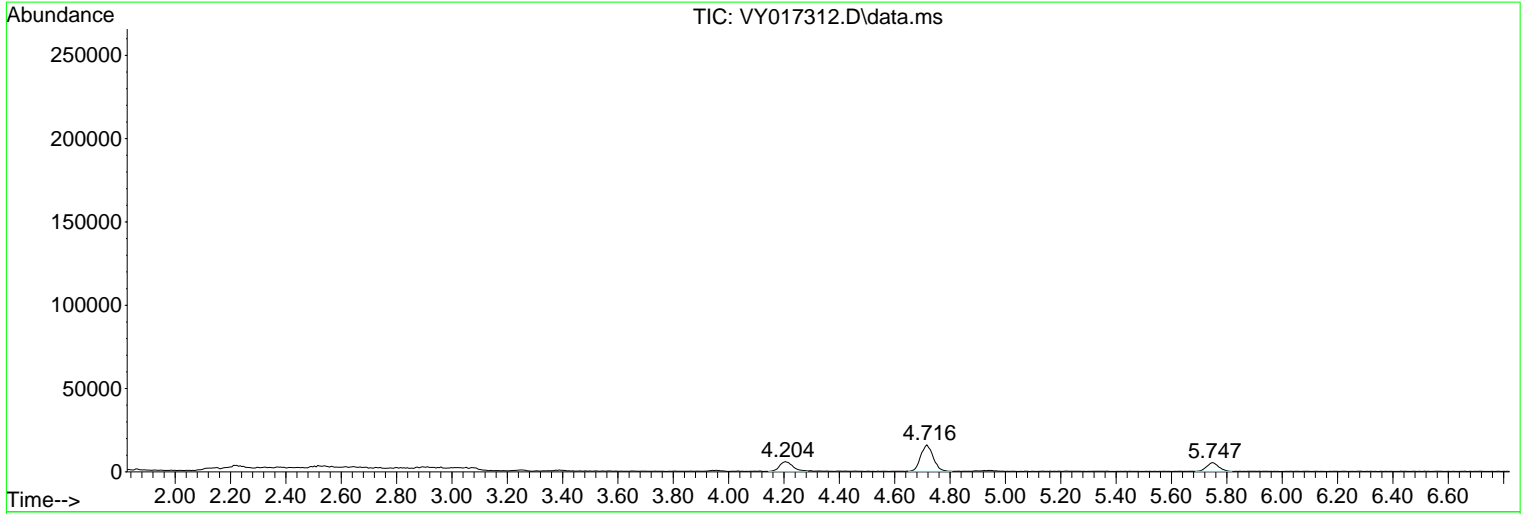
Sum of corrected areas: 2482076

Data Path : Z:\voasrv\HPCHEM1\MSVOA_Y\Data\VY020824\
 Data File : VY017312.D
 Acq On : 08 Feb 2024 14:59
 Operator : SY/MD
 Sample : P1337-13
 Misc : 5.67g/5.0mL/MSVOA_Y/SOIL/A
 ALS Vial : 10 Sample Multiplier: 1

Instrument :
 MSVOA_Y
 ClientSampleId :
 TP-5

Quant Method : Z:\voasrv\HPCHEM1\MSVOA_Y\methods\82Y020124S.M
 Quant Title : SW846 8260

TIC Library : C:\Database\NIST20.L
 TIC Integration Parameters: LSCINT.P



Library Search Compound Report

Data Path : Z:\voasrv\HPCHEM1\MSVOA_Y\Data\VY020824\
Data File : VY017312.D
Acq On : 08 Feb 2024 14:59
Operator : SY/MD
Sample : P1337-13
Misc : 5.67g/5.0mL/MSVOA_Y/SOIL/A
ALS Vial : 10 Sample Multiplier: 1

Instrument :
MSVOA_Y
ClientSampleId :
TP-5

Quant Method : Z:\voasrv\HPCHEM1\MSVOA_Y\methods\82Y020124S.M
Quant Title : SW846 8260

TIC Library : C:\Database\NIST20.L
TIC Integration Parameters: LSCINT.P

No Library Search Compounds Detected

Data Path : Z:\voasrv\HPCHEM1\MSVOA_Y\Data\VY020824\
Data File : VY017312.D
Acq On : 08 Feb 2024 14:59
Operator : SY/MD
Sample : P1337-13
Misc : 5.67g/5.0mL/MSVOA_Y/SOIL/A
ALS Vial : 10 Sample Multiplier: 1

Instrument :
MSVOA_Y
ClientSampleId :
TP-5

Quant Method : Z:\voasrv\HPCHEM1\MSVOA_Y\methods\82Y020124S.M
Quant Title : SW846 8260

TIC Library : C:\Database\NIST20.L
TIC Integration Parameters: LSCINT.P

TIC Top Hit name	RT	EstConc	Units	Response	#	RT	Resp	Conc
------------------	----	---------	-------	----------	---	----	------	------
