

Data Path : Z:\voasrv\HPCHEM1\MSVOA_Y\Data\VY021125\
 Data File : VY021171.D
 Acq On : 11 Feb 2025 15:38
 Operator : SY/MD
 Sample : Q1345-01
 Misc : 5.06g/5.0mL/MSVOA_Y/SOIL/A
 ALS Vial : 9 Sample Multiplier: 1

Instrument :
 MSVOA_Y
 ClientSampleId :
 EO-01-021025

Integration Parameters: RTEINT.P

Integrator: RTE
 Smoothing : ON
 Sampling : 1
 Start Thrs : 0.2
 Stop Thrs : 0

Filtering: 5
 Min Area: 3 % of largest Peak
 Max Peaks: 100
 Peak Location: TOP

If leading or trailing edge < 100 prefer < Baseline drop else tangent >
 Peak separation: 5

Method : Z:\voasrv\HPCHEM1\MSVOA_Y\methods\82Y020325S.M
 Title : SW846 8260

Signal : TIC: VY021171.D\data.ms

peak #	R.T. min	first scan	max scan	last scan	PK TY	peak height	corr. area	corr. % max.	% of total
1	4.110	388	392	397	rBV3	748	1162	1.22%	0.158%
2	6.890	839	848	859	rBV2	2040	6067	6.35%	0.823%
3	7.646	965	972	978	rBV2	13726	33432	34.99%	4.534%
4	7.719	978	984	993	rVB	27908	61580	64.46%	8.352%
5	8.073	1033	1042	1051	rBV	11306	26666	27.91%	3.617%
6	8.622	1126	1132	1142	rVB	35858	74060	77.52%	10.045%
7	10.115	1370	1377	1390	rBV	53128	95535	100.00%	12.957%
8	11.261	1560	1565	1571	rVB2	680	1040	1.09%	0.141%
9	11.426	1586	1592	1606	rVB	45672	75731	79.27%	10.271%
10	11.646	1625	1628	1637	rVB6	1344	2606	2.73%	0.353%
11	12.060	1692	1696	1700	rBV3	1118	1496	1.57%	0.203%
12	12.176	1711	1715	1723	rVB6	737	1812	1.90%	0.246%
13	12.353	1738	1744	1746	rBV6	741	1468	1.54%	0.199%
14	12.420	1749	1755	1765	rVB2	28562	48920	51.21%	6.635%
15	12.584	1776	1782	1790	rBV4	1741	3404	3.56%	0.462%
16	12.658	1790	1794	1795	rBV	1175	1091	1.14%	0.148%
17	12.743	1802	1808	1814	rBV3	13475	21904	22.93%	2.971%
18	12.883	1827	1831	1833	rBV4	1494	2245	2.35%	0.304%
19	12.975	1842	1846	1854	rVB4	4365	7345	7.69%	0.996%
20	13.054	1854	1859	1863	rVB6	2910	4630	4.85%	0.628%
21	13.109	1866	1868	1872	rVB4	1206	1333	1.40%	0.181%
22	13.157	1872	1876	1878	rBV5	1500	2511	2.63%	0.341%
23	13.249	1884	1891	1895	rBV6	4997	9748	10.20%	1.322%
24	13.298	1895	1899	1902	rVV5	3584	5811	6.08%	0.788%
25	13.359	1902	1909	1918	rVB2	30458	56999	59.66%	7.731%
26	13.438	1918	1922	1927	rVB6	3273	4311	4.51%	0.585%
27	13.493	1928	1931	1934	rBV4	1399	1694	1.77%	0.230%
28	13.554	1938	1941	1945	rVB2	3615	4254	4.45%	0.577%
29	13.596	1945	1948	1955	rVB2	4011	6793	7.11%	0.921%
30	13.688	1955	1963	1967	rBV2	22902	35581	37.24%	4.826%
31	13.724	1967	1969	1971	rBV3	1002	1282	1.34%	0.174%
32	13.755	1971	1974	1978	rVB3	1371	2152	2.25%	0.292%
33	13.810	1980	1983	1984	rBV3	923	1080	1.13%	0.146%
34	13.846	1986	1989	1994	rVB5	4118	6234	6.53%	0.846%
35	13.901	1994	1998	2002	rVB2	5379	7495	7.85%	1.017%
36	13.950	2002	2006	2011	rVB7	1976	3663	3.83%	0.497%

Data Path : Z:\voasrv\HPCHEM1\MSVOA_Y\Data\VY021125\
 Data File : VY021171.D
 Acq On : 11 Feb 2025 15:38
 Operator : SY/MD
 Sample : Q1345-01
 Misc : 5.06g/5.0mL/MSVOA_Y/SOIL/A
 ALS Vial : 9 Sample Multiplier: 1

Instrument :
 MSVOA_Y
 ClientSampleId :
 EO-01-021025

Integration Parameters: RTEINT.P

Integrator: RTE
 Smoothing : ON
 Sampling : 1
 Start Thrs : 0.2
 Stop Thrs : 0

Filtering: 5
 Min Area: 3 % of largest Peak
 Max Peaks: 100
 Peak Location: TOP

If leading or trailing edge < 100 prefer < Baseline drop else tangent >
 Peak separation: 5

Method : Z:\voasrv\HPCHEM1\MSVOA_Y\methods\82Y020325S.M
 Title : SW846 8260

37	14.011	2011	2016	2020	rVB3	6326	10562	11.06%	1.433%
38	14.078	2020	2027	2032	rBV10	2351	5621	5.88%	0.762%
39	14.139	2032	2037	2040	rBV7	2330	4904	5.13%	0.665%
40	14.182	2040	2044	2046	rBV4	2964	5136	5.38%	0.697%
41	14.243	2052	2054	2055	rBV	1805	1257	1.32%	0.170%
42	14.261	2055	2057	2061	rVB	4998	6434	6.73%	0.873%
43	14.310	2061	2065	2068	rBV4	3496	3950	4.13%	0.536%
44	14.346	2068	2071	2077	rVB8	3724	5716	5.98%	0.775%
45	14.395	2077	2079	2081	rBV2	1024	1111	1.16%	0.151%
46	14.456	2083	2089	2091	rVB6	1894	2971	3.11%	0.403%
47	14.486	2091	2094	2098	rBV6	1827	3391	3.55%	0.460%
48	14.541	2098	2103	2107	rVB4	7147	10582	11.08%	1.435%
49	14.602	2107	2113	2119	rBV4	8430	18486	19.35%	2.507%
50	14.663	2119	2123	2127	rVB6	2618	4506	4.72%	0.611%
51	14.761	2132	2139	2143	rBV5	4399	7769	8.13%	1.054%
52	14.864	2154	2156	2160	rBV5	1904	2582	2.70%	0.350%
53	14.974	2168	2174	2180	rVV6	2284	5095	5.33%	0.691%
54	15.029	2180	2183	2184	rVV3	1068	1226	1.28%	0.166%
55	15.047	2184	2186	2193	rVV7	1543	2840	2.97%	0.385%
56	15.133	2193	2200	2203	rVB8	1078	1861	1.95%	0.252%
57	15.212	2208	2213	2214	rBV4	1614	1672	1.75%	0.227%
58	15.279	2220	2224	2229	rBV5	1440	2521	2.64%	0.342%
59	15.352	2233	2236	2241	rVB4	1273	2045	2.14%	0.277%
60	15.633	2280	2282	2289	rVB6	1282	1939	2.03%	0.263%

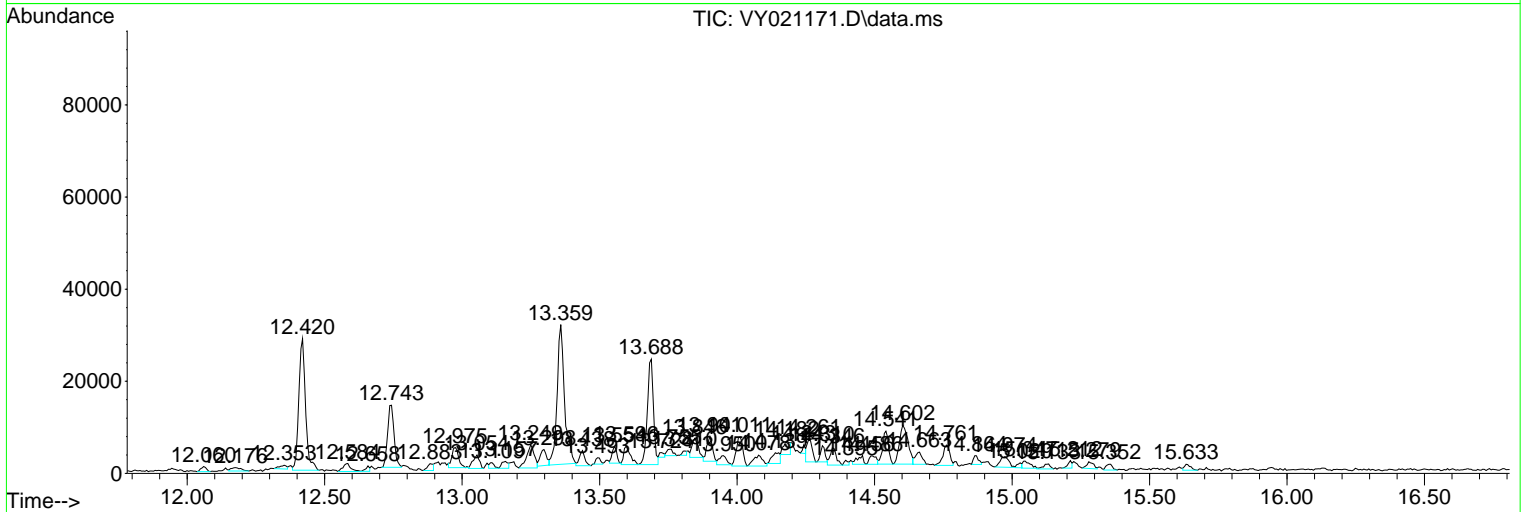
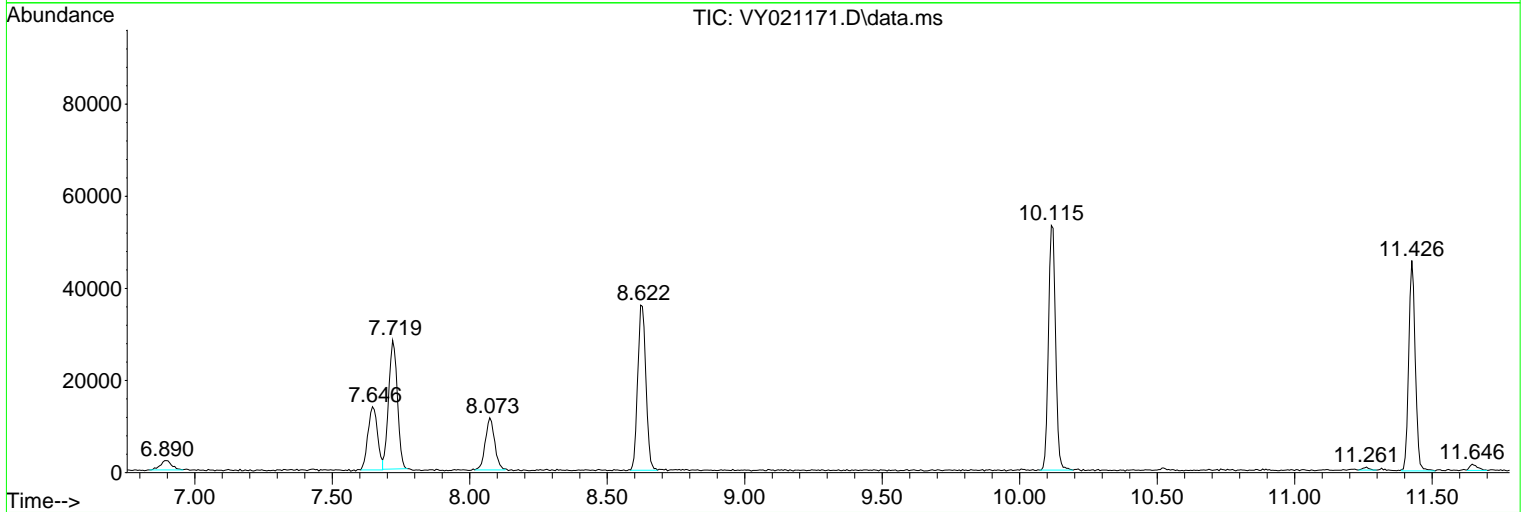
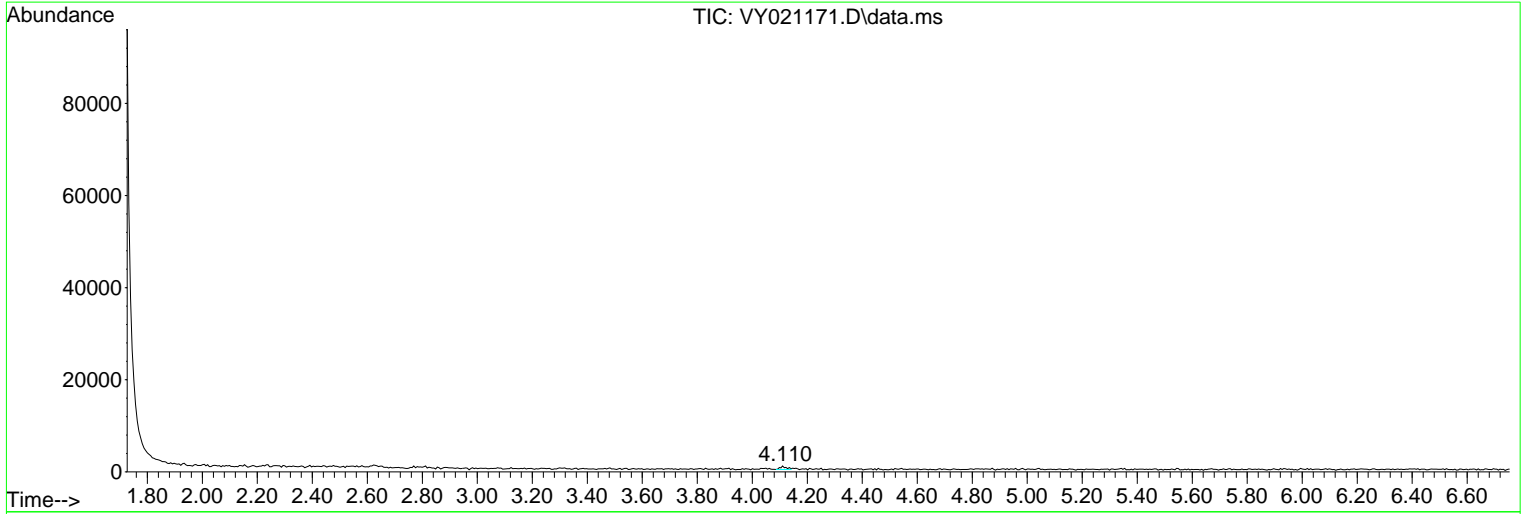
Sum of corrected areas: 737312

Data Path : Z:\voasrv\HPCHEM1\MSVOA_Y\Data\VY021125\
 Data File : VY021171.D
 Acq On : 11 Feb 2025 15:38
 Operator : SY/MD
 Sample : Q1345-01
 Misc : 5.06g/5.0mL/MSVOA_Y/SOIL/A
 ALS Vial : 9 Sample Multiplier: 1

Instrument :
 MSVOA_Y
 ClientSampleId :
 EO-01-021025

Quant Method : Z:\voasrv\HPCHEM1\MSVOA_Y\methods\82Y020325S.M
 Quant Title : SW846 8260

TIC Library : C:\Database\NIST20.L
 TIC Integration Parameters: LSCINT.P



Data Path : Z:\voasrv\HPCHEM1\MSVOA_Y\Data\VY021125\
 Data File : VY021171.D
 Acq On : 11 Feb 2025 15:38
 Operator : SY/MD
 Sample : Q1345-01
 Misc : 5.06g/5.0mL/MSVOA_Y/SOIL/A
 ALS Vial : 9 Sample Multiplier: 1

Instrument :
 MSVOA_Y
 ClientSampleId :
 EO-01-021025

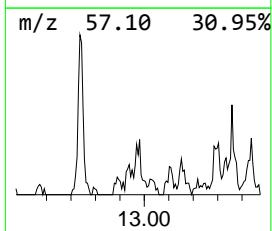
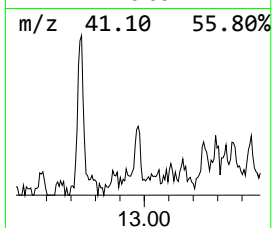
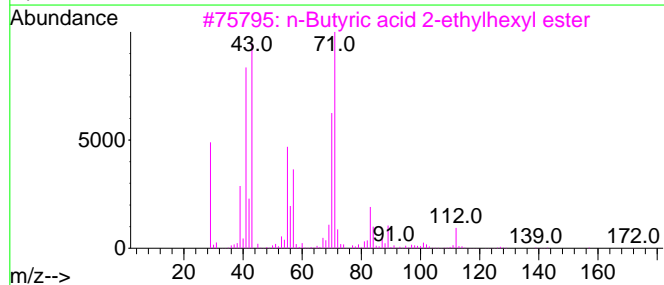
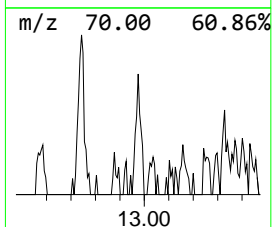
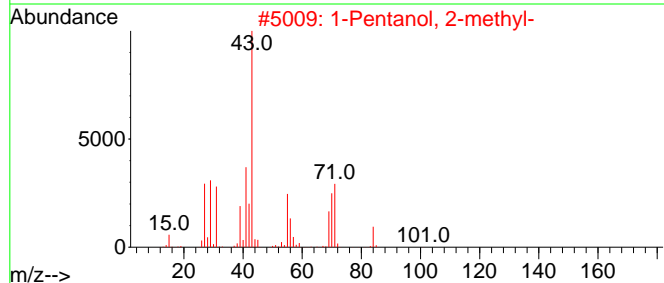
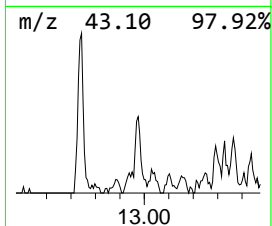
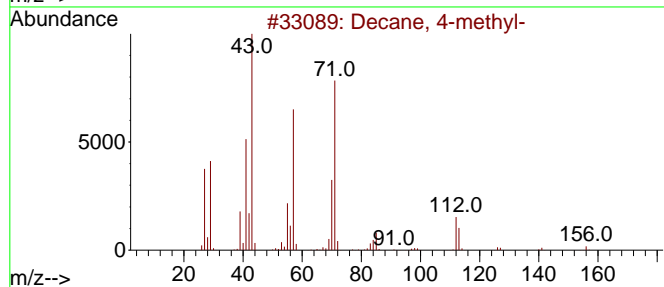
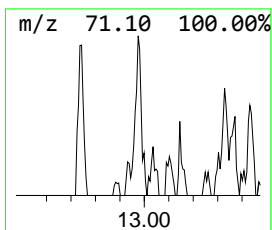
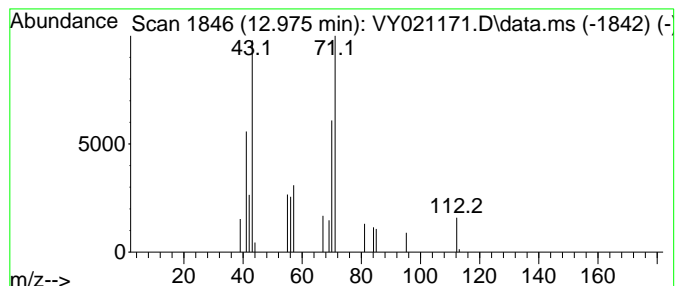
Quant Method : Z:\voasrv\HPCHEM1\MSVOA_Y\methods\82Y020325S.M
 Quant Title : SW846 8260

TIC Library : C:\Database\NIST0.L
 TIC Integration Parameters: LSCINT.P

 Peak Number 1 Decane, 4-methyl- Concentration Rank 8

R.T.	EstConc	Area	Relative to ISTD	R.T.
12.975	6.44 ug/l	7345	1,4-Dichlorobenzene-d4	13.359

Hit#	of 5	Tentative ID	MW	MolForm	CAS#	Qual
1		Decane, 4-methyl-	156	C11H24	002847-72-5	64
2		1-Pentanol, 2-methyl-	102	C6H14O	000105-30-6	59
3		n-Butyric acid 2-ethylhexyl ester	200	C12H24O2	025415-84-3	56
4		Oxirane, pentyl-	114	C7H14O	005063-65-0	47
5		Propanoic acid, 2-methyl-, 2-eth...	200	C12H24O2	035061-61-1	45



Data Path : Z:\voasrv\HPCHEM1\MSVOA_Y\Data\VY021125\
 Data File : VY021171.D
 Acq On : 11 Feb 2025 15:38
 Operator : SY/MD
 Sample : Q1345-01
 Misc : 5.06g/5.0mL/MSVOA_Y/SOIL/A
 ALS Vial : 9 Sample Multiplier: 1

Instrument :
 MSVOA_Y
 ClientSampleId :
 EO-01-021025

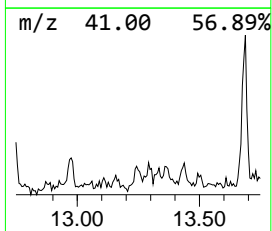
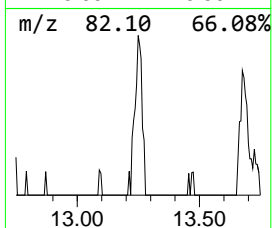
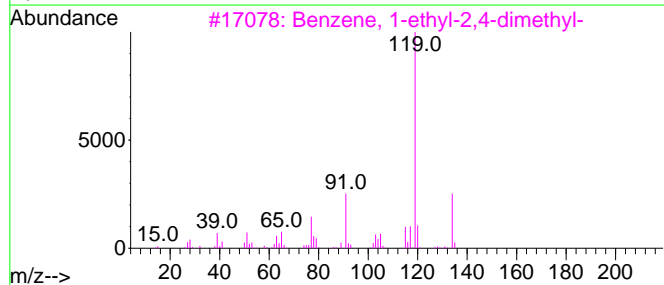
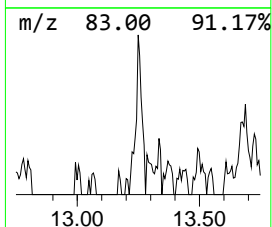
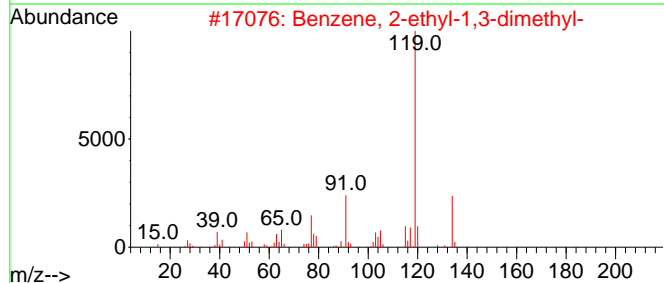
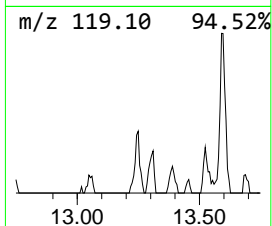
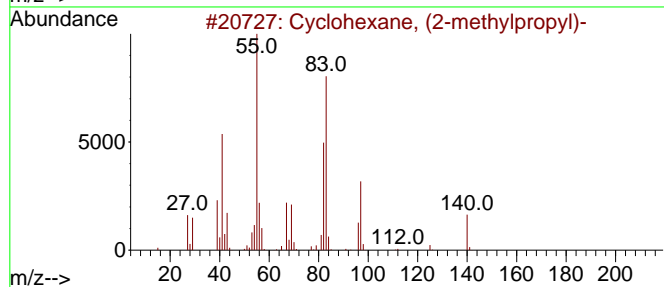
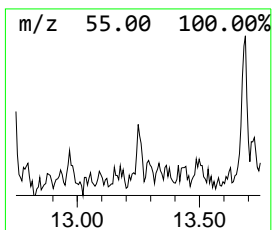
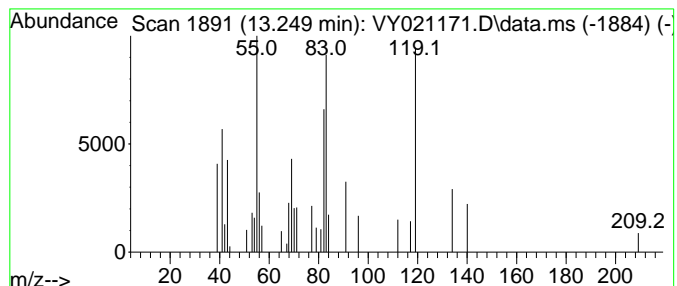
Quant Method : Z:\voasrv\HPCHEM1\MSVOA_Y\methods\82Y020325S.M
 Quant Title : SW846 8260

TIC Library : C:\Database\NIST0.L
 TIC Integration Parameters: LSCINT.P

 Peak Number 2 unknown13.249 Concentration Rank 5

R.T.	EstConc	Area	Relative to ISTD	R.T.
13.249	8.55 ug/l	9748	1,4-Dichlorobenzene-d4	13.359

Hit#	of 5	Tentative ID	MW	MolForm	CAS#	Qual
1		Cyclohexane, (2-methylpropyl)-	140	C10H20	001678-98-4	45
2		Benzene, 2-ethyl-1,3-dimethyl-	134	C10H14	002870-04-4	30
3		Benzene, 1-ethyl-2,4-dimethyl-	134	C10H14	000874-41-9	27
4		Cyclohexane, (1-methylpropyl)-	140	C10H20	007058-01-7	27
5		Benzene, 1-ethyl-2,3-dimethyl-	134	C10H14	000933-98-2	27



Data Path : Z:\voasrv\HPCHEM1\MSVOA_Y\Data\VY021125\
 Data File : VY021171.D
 Acq On : 11 Feb 2025 15:38
 Operator : SY/MD
 Sample : Q1345-01
 Misc : 5.06g/5.0mL/MSVOA_Y/SOIL/A
 ALS Vial : 9 Sample Multiplier: 1

Instrument :
 MSVOA_Y
 ClientSampleId :
 EO-01-021025

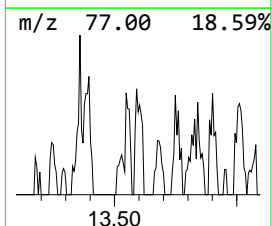
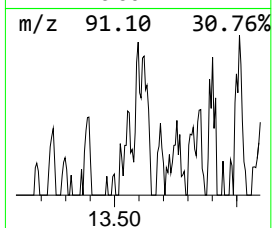
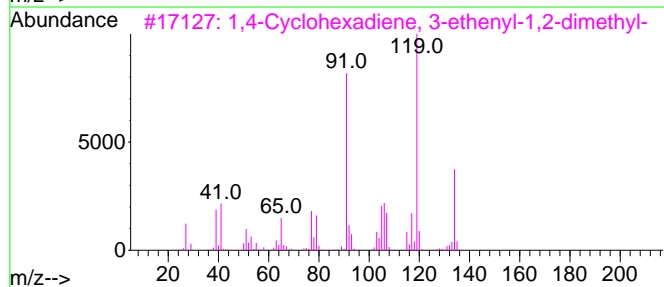
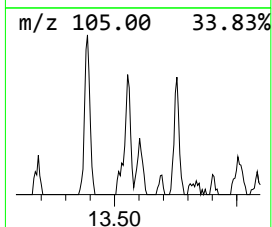
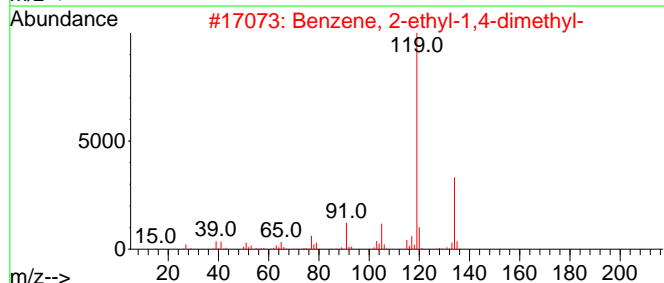
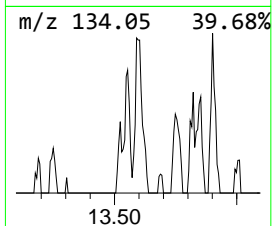
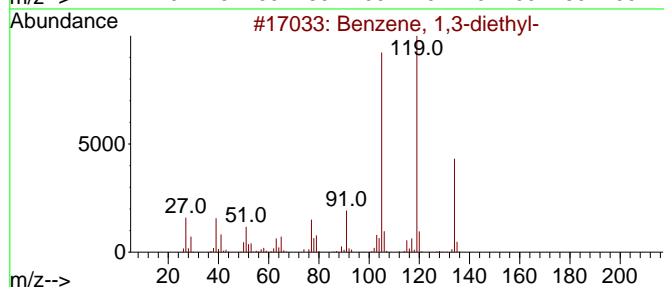
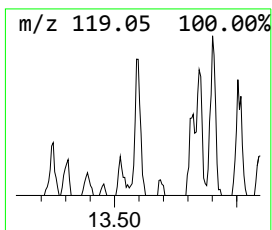
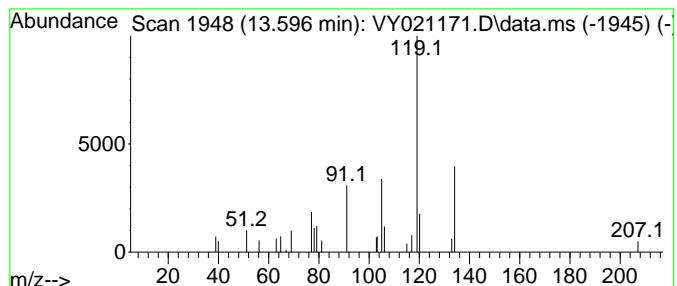
Quant Method : Z:\voasrv\HPCHEM1\MSVOA_Y\methods\82Y020325S.M
 Quant Title : SW846 8260

TIC Library : C:\Database\NIST20.L
 TIC Integration Parameters: LSCINT.P

 Peak Number 3 Benzene, 1,3-diethyl- Concentration Rank 9

R.T.	EstConc	Area	Relative to ISTD	R.T.
13.596	5.96 ug/l	6793	1,4-Dichlorobenzene-d4	13.359

Hit#	of	5	Tentative ID	MW	MolForm	CAS#	Qual
1			Benzene, 1,3-diethyl-	134	C10H14	000141-93-5	74
2			Benzene, 2-ethyl-1,4-dimethyl-	134	C10H14	001758-88-9	72
3			1,4-Cyclohexadiene, 3-ethenyl-1,...	134	C10H14	062338-57-2	72
4			Benzene, 1-ethyl-3,5-dimethyl-	134	C10H14	000934-74-7	72
5			1,3,8-p-Menthatriene	134	C10H14	018368-95-1	64



Data Path : Z:\voasrv\HPCHEM1\MSVOA_Y\Data\VY021125\
 Data File : VY021171.D
 Acq On : 11 Feb 2025 15:38
 Operator : SY/MD
 Sample : Q1345-01
 Misc : 5.06g/5.0mL/MSVOA_Y/SOIL/A
 ALS Vial : 9 Sample Multiplier: 1

Instrument :
 MSVOA_Y
 ClientSampleId :
 EO-01-021025

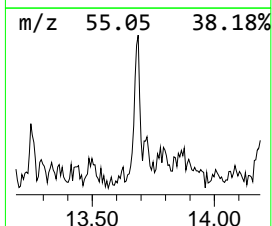
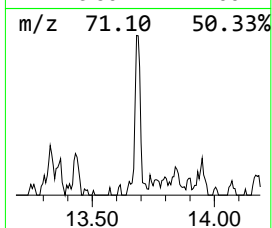
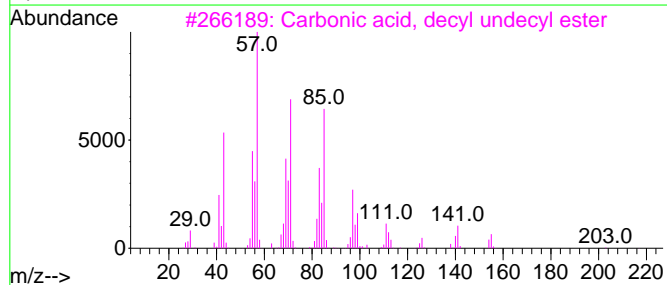
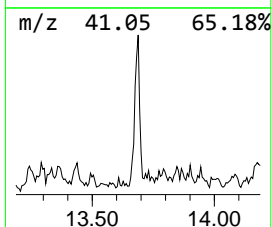
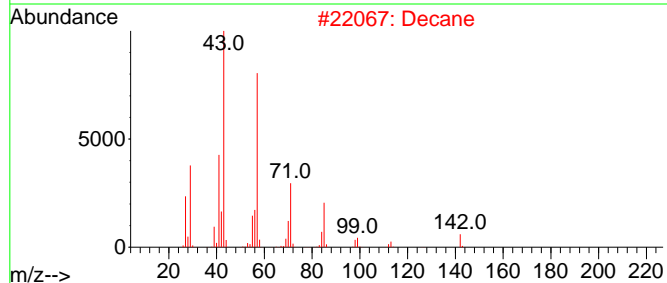
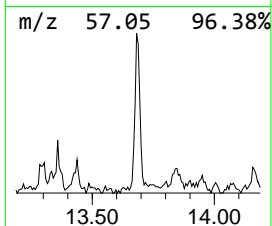
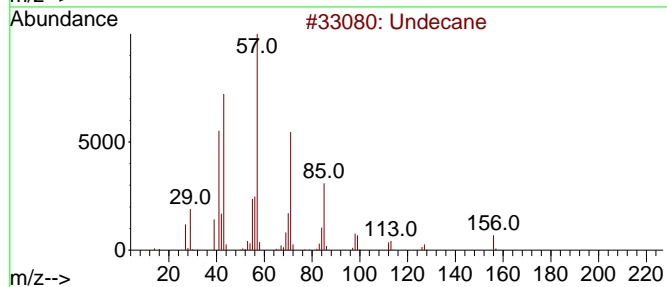
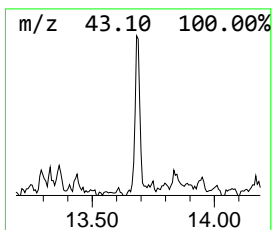
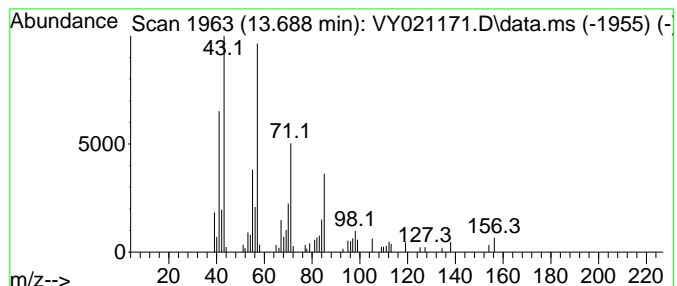
Quant Method : Z:\voasrv\HPCHEM1\MSVOA_Y\methods\82Y020325S.M
 Quant Title : SW846 8260

TIC Library : C:\Database\NIST0.L
 TIC Integration Parameters: LSCINT.P

 Peak Number 4 Undecane Concentration Rank 1

R.T.	EstConc	Area	Relative to ISTD	R.T.
13.688	31.21 ug/l	35581	1,4-Dichlorobenzene-d4	13.359

Hit#	of 5	Tentative ID	MW	MolForm	CAS#	Qual
1		Undecane	156	C11H24	001120-21-4	93
2		Decane	142	C10H22	000124-18-5	72
3		Carbonic acid, decyl undecyl ester	356	C22H44O3	1000383-16-0	59
4		Nonane	128	C9H20	000111-84-2	59
5		Decane, 2,3,7-trimethyl-	184	C13H28	062238-13-5	50



Data Path : Z:\voasrv\HPCHEM1\MSVOA_Y\Data\VY021125\
 Data File : VY021171.D
 Acq On : 11 Feb 2025 15:38
 Operator : SY/MD
 Sample : Q1345-01
 Misc : 5.06g/5.0mL/MSVOA_Y/SOIL/A
 ALS Vial : 9 Sample Multiplier: 1

Instrument :
 MSVOA_Y
 ClientSampleId :
 EO-01-021025

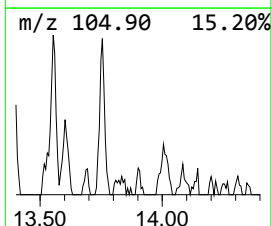
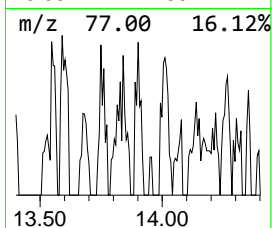
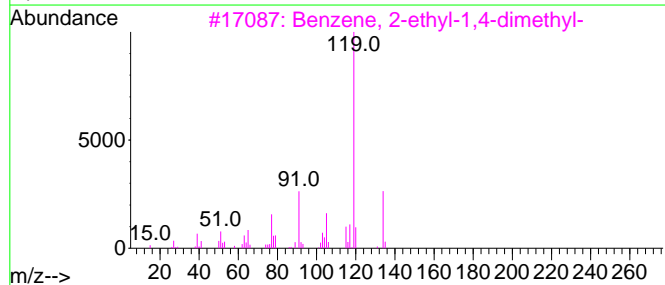
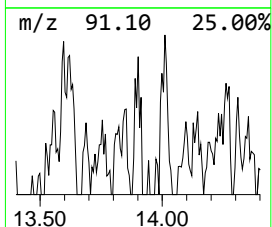
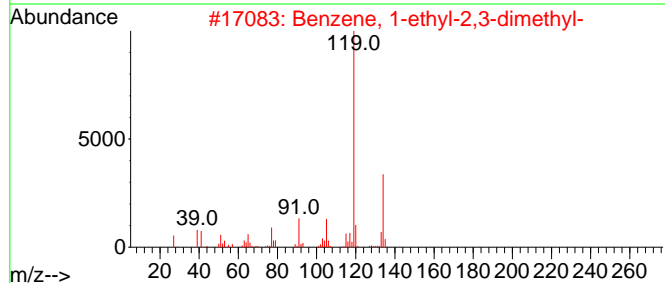
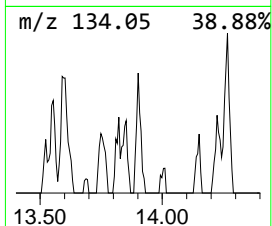
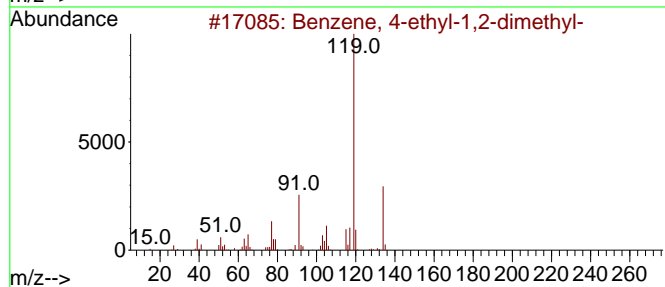
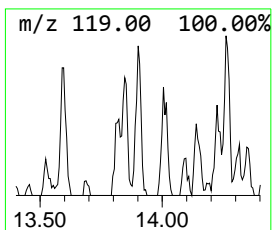
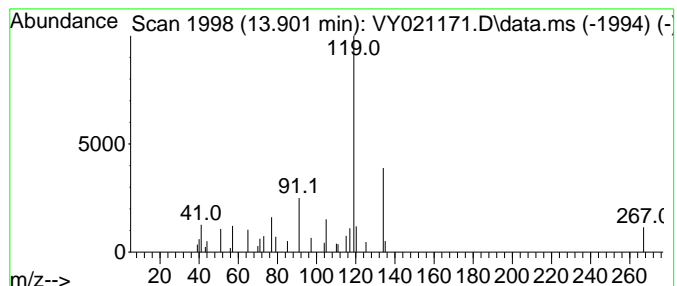
Quant Method : Z:\voasrv\HPCHEM1\MSVOA_Y\methods\82Y020325S.M
 Quant Title : SW846 8260

TIC Library : C:\Database\NIST20.L
 TIC Integration Parameters: LSCINT.P

 Peak Number 5 Benzene, 4-ethyl-1,2-dimethyl- Concentration Rank 7

R.T.	EstConc	Area	Relative to ISTD	R.T.
13.901	6.57 ug/l	7495	1,4-Dichlorobenzene-d4	13.359

Hit#	of	5	Tentative ID	MW	MolForm	CAS#	Qual
1			Benzene, 4-ethyl-1,2-dimethyl-	134	C10H14	000934-80-5	87
2			Benzene, 1-ethyl-2,3-dimethyl-	134	C10H14	000933-98-2	87
3			Benzene, 2-ethyl-1,4-dimethyl-	134	C10H14	001758-88-9	87
4			Benzene, 1-ethyl-3,5-dimethyl-	134	C10H14	000934-74-7	83
5			p-Cymene	134	C10H14	000099-87-6	74



Data Path : Z:\voasrv\HPCHEM1\MSVOA_Y\Data\VY021125\
 Data File : VY021171.D
 Acq On : 11 Feb 2025 15:38
 Operator : SY/MD
 Sample : Q1345-01
 Misc : 5.06g/5.0mL/MSVOA_Y/SOIL/A
 ALS Vial : 9 Sample Multiplier: 1

Instrument :
 MSVOA_Y
 ClientSampleId :
 EO-01-021025

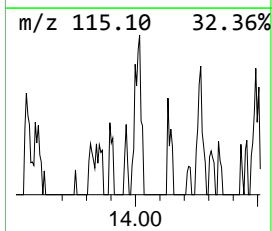
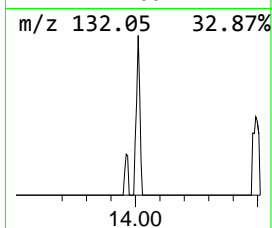
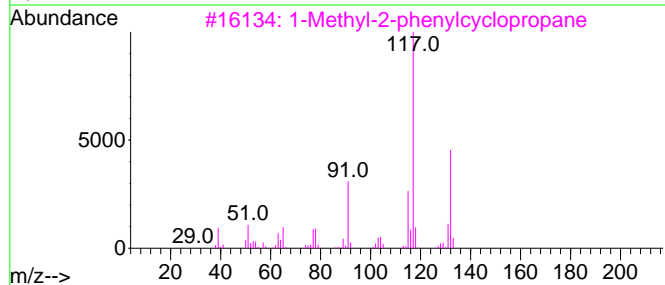
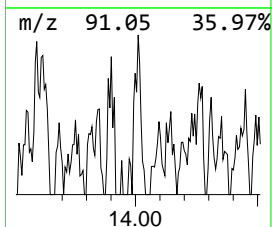
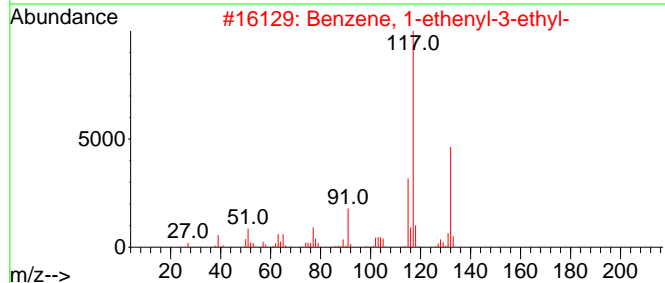
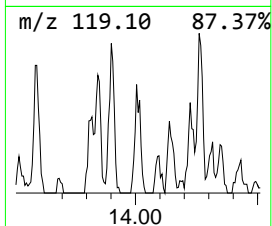
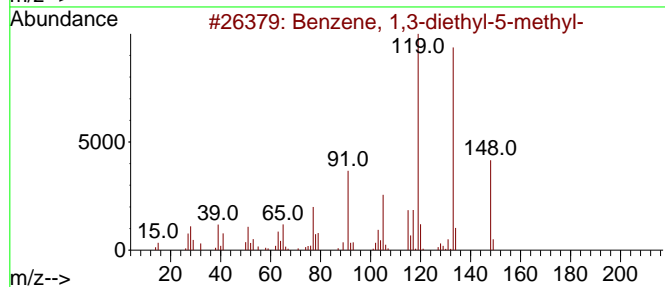
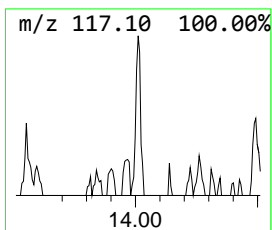
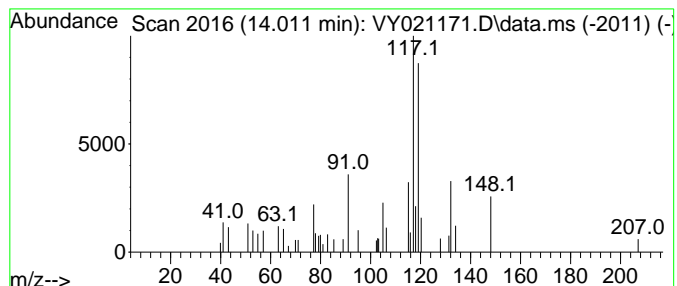
Quant Method : Z:\voasrv\HPCHEM1\MSVOA_Y\methods\82Y020325S.M
 Quant Title : SW846 8260

TIC Library : C:\Database\NIST0.L
 TIC Integration Parameters: LSCINT.P

 Peak Number 6 unknown14.011 Concentration Rank 4

R.T.	EstConc	Area	Relative to ISTD	R.T.
14.011	9.27 ug/l	10562	1,4-Dichlorobenzene-d4	13.359

Hit#	of	5	Tentative ID	MW	MolForm	CAS#	Qual
1			Benzene, 1,3-diethyl-5-methyl-	148	C11H16	002050-24-0	43
2			Benzene, 1-ethenyl-3-ethyl-	132	C10H12	007525-62-4	41
3			1-Methyl-2-phenylcyclopropane	132	C10H12	003145-76-4	38
4			1H-Indene, 2,3-dihydro-2-methyl-	132	C10H12	000824-63-5	38
5			3-Phenyl-4-methyl-isoxazol-5(4H)...	175	C10H9N02	023244-37-3	35



Data Path : Z:\voasrv\HPCHEM1\MSVOA_Y\Data\VY021125\
 Data File : VY021171.D
 Acq On : 11 Feb 2025 15:38
 Operator : SY/MD
 Sample : Q1345-01
 Misc : 5.06g/5.0mL/MSVOA_Y/SOIL/A
 ALS Vial : 9 Sample Multiplier: 1

Instrument :
 MSVOA_Y
 ClientSampleId :
 EO-01-021025

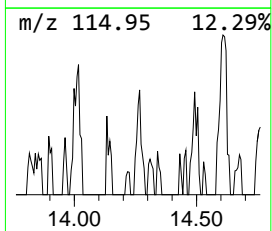
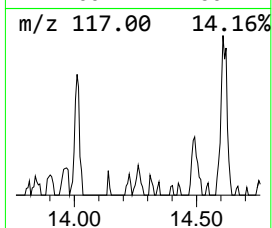
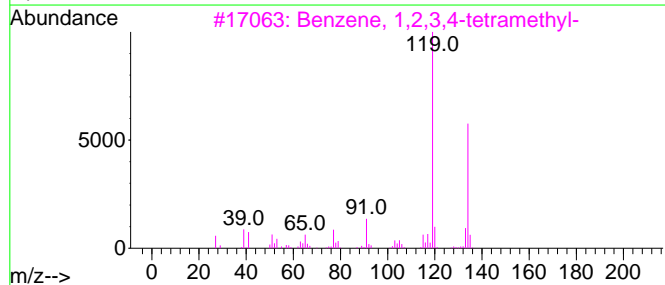
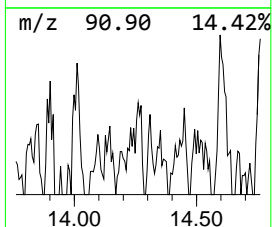
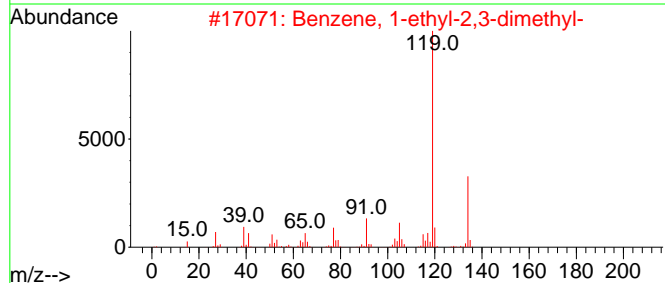
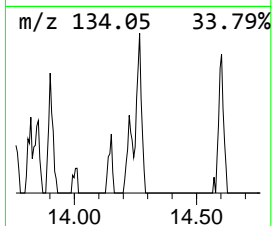
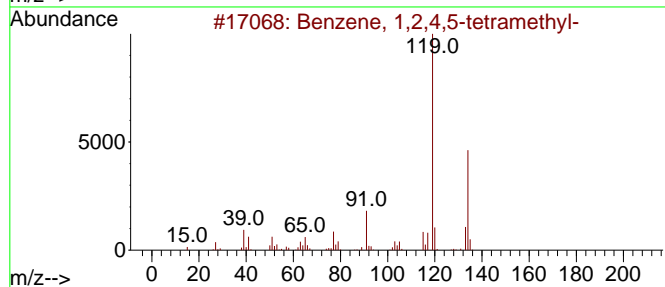
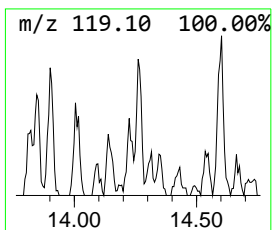
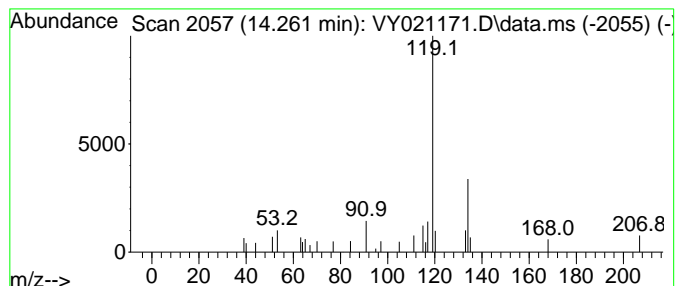
Quant Method : Z:\voasrv\HPCHEM1\MSVOA_Y\methods\82Y020325S.M
 Quant Title : SW846 8260

TIC Library : C:\Database\NIST0.L
 TIC Integration Parameters: LSCINT.P

 Peak Number 7 Benzene, 1,2,4,5-tetramethyl- Concentration Rank 10

R.T.	EstConc	Area	Relative to ISTD	R.T.
14.261	5.64 ug/l	6434	1,4-Dichlorobenzene-d4	13.359

Hit#	of	5	Tentative ID	MW	MolForm	CAS#	Qual
1			Benzene, 1,2,4,5-tetramethyl-	134	C10H14	000095-93-2	86
2			Benzene, 1-ethyl-2,3-dimethyl-	134	C10H14	000933-98-2	86
3			Benzene, 1,2,3,4-tetramethyl-	134	C10H14	000488-23-3	86
4			o-Cymene	134	C10H14	000527-84-4	83
5			Benzene, 1-ethyl-2,4-dimethyl-	134	C10H14	000874-41-9	83



Data Path : Z:\voasrv\HPCHEM1\MSVOA_Y\Data\VY021125\
 Data File : VY021171.D
 Acq On : 11 Feb 2025 15:38
 Operator : SY/MD
 Sample : Q1345-01
 Misc : 5.06g/5.0mL/MSVOA_Y/SOIL/A
 ALS Vial : 9 Sample Multiplier: 1

Instrument :
 MSVOA_Y
 ClientSampleId :
 EO-01-021025

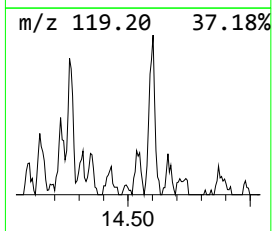
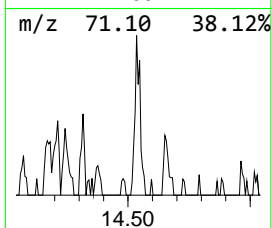
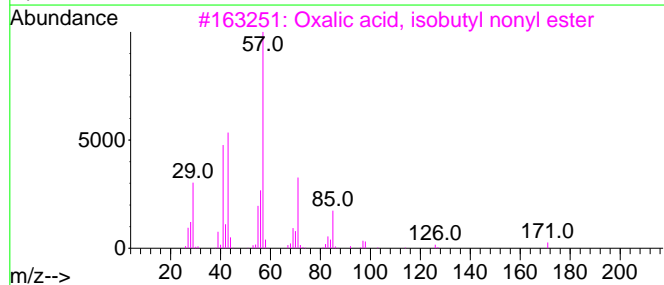
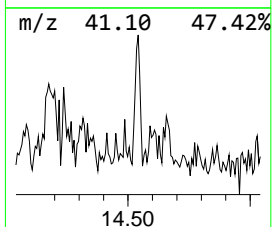
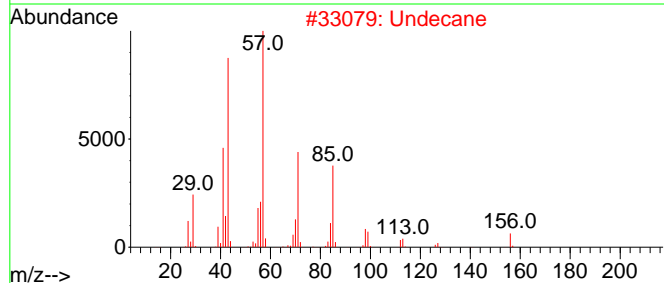
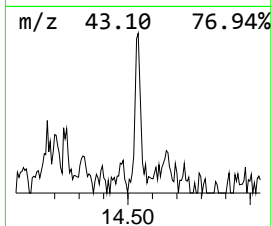
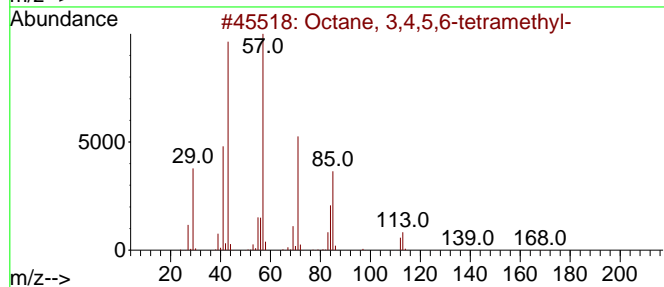
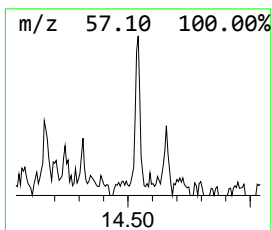
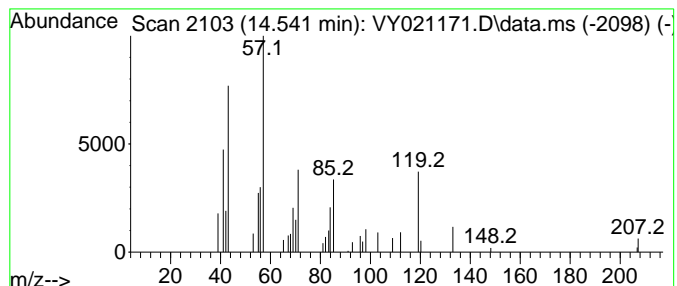
Quant Method : Z:\voasrv\HPCHEM1\MSVOA_Y\methods\82Y020325S.M
 Quant Title : SW846 8260

TIC Library : C:\Database\NIST0.L
 TIC Integration Parameters: LSCINT.P

 Peak Number 8 unknown14.541 Concentration Rank 3

R.T.	EstConc	Area	Relative to ISTD	R.T.
14.541	9.28 ug/l	10582	1,4-Dichlorobenzene-d4	13.359

Hit#	of	5	Tentative ID	MW	MolForm	CAS#	Qual
1			Octane, 3,4,5,6-tetramethyl-	170	C12H26	062185-21-1	47
2			Undecane	156	C11H24	001120-21-4	47
3			Oxalic acid, isobutyl nonyl ester	272	C15H28O4	1010309-37-4	43
4			Vinyl lauryl ether	212	C14H28O	000765-14-0	43
5			Decane	142	C10H22	000124-18-5	40



Data Path : Z:\voasrv\HPCHEM1\MSVOA_Y\Data\VY021125\
 Data File : VY021171.D
 Acq On : 11 Feb 2025 15:38
 Operator : SY/MD
 Sample : Q1345-01
 Misc : 5.06g/5.0mL/MSVOA_Y/SOIL/A
 ALS Vial : 9 Sample Multiplier: 1

Instrument :
 MSVOA_Y
 ClientSampleId :
 EO-01-021025

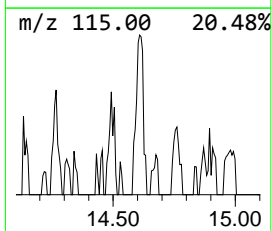
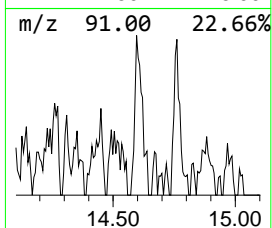
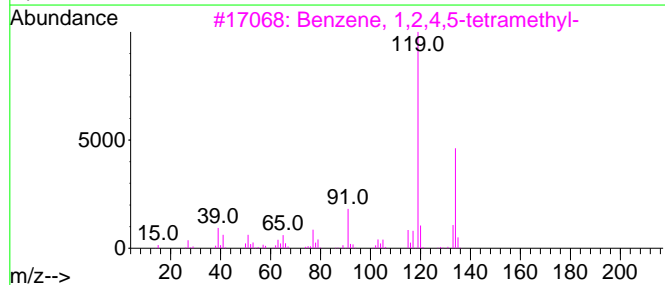
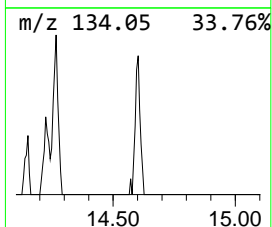
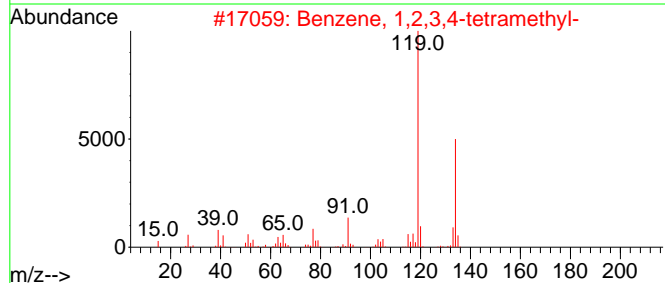
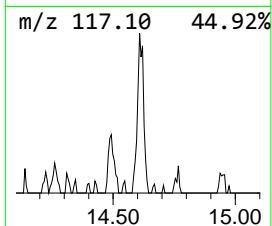
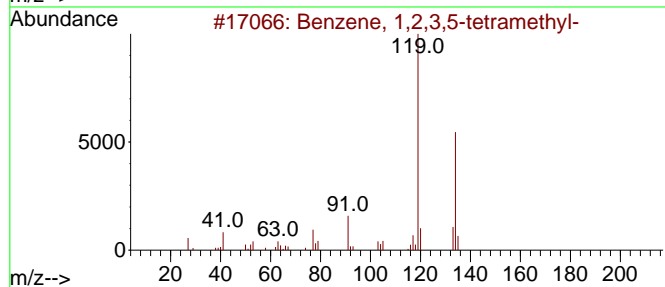
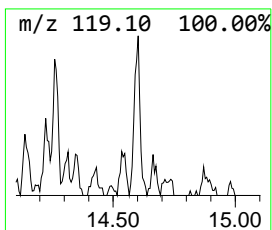
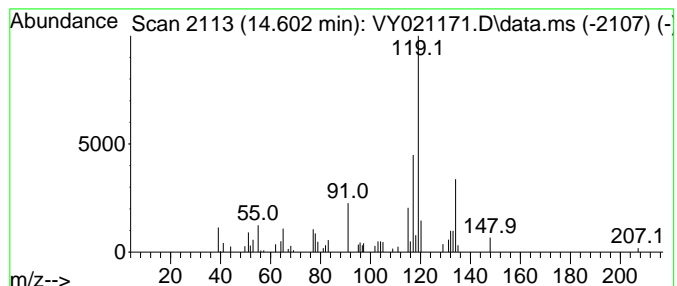
Quant Method : Z:\voasrv\HPCHEM1\MSVOA_Y\methods\82Y020325S.M
 Quant Title : SW846 8260

TIC Library : C:\Database\NIST0.L
 TIC Integration Parameters: LSCINT.P

 Peak Number 9 Benzene, 1,2,3,5-tetramethyl- Concentration Rank 2

R.T.	EstConc	Area	Relative to ISTD	R.T.
14.602	16.22 ug/l	18486	1,4-Dichlorobenzene-d4	13.359

Hit#	of	5	Tentative ID	MW	MolForm	CAS#	Qual
1			Benzene, 1,2,3,5-tetramethyl-	134	C10H14	000527-53-7	60
2			Benzene, 1,2,3,4-tetramethyl-	134	C10H14	000488-23-3	60
3			Benzene, 1,2,4,5-tetramethyl-	134	C10H14	000095-93-2	60
4			o-Cymene	134	C10H14	000527-84-4	53
5			1,3-Cyclopentadiene, 1,2,3,4-tet...	134	C10H14	076089-59-3	53



Data Path : Z:\voasrv\HPCHEM1\MSVOA_Y\Data\VY021125\
 Data File : VY021171.D
 Acq On : 11 Feb 2025 15:38
 Operator : SY/MD
 Sample : Q1345-01
 Misc : 5.06g/5.0mL/MSVOA_Y/SOIL/A
 ALS Vial : 9 Sample Multiplier: 1

Instrument :
 MSVOA_Y
 ClientSampleId :
 EO-01-021025

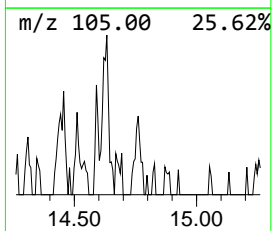
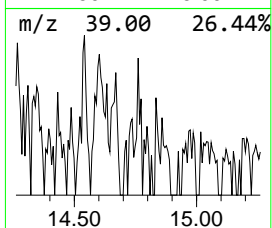
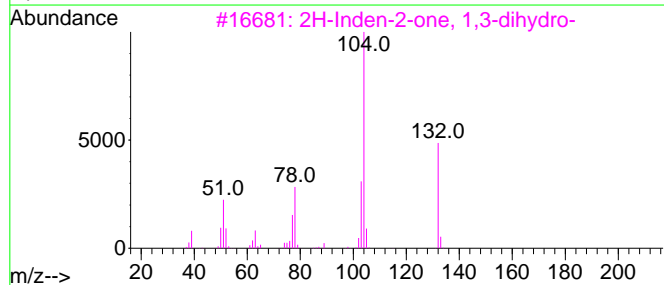
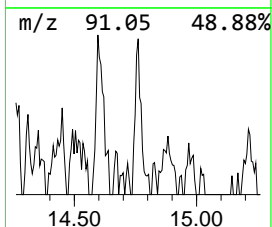
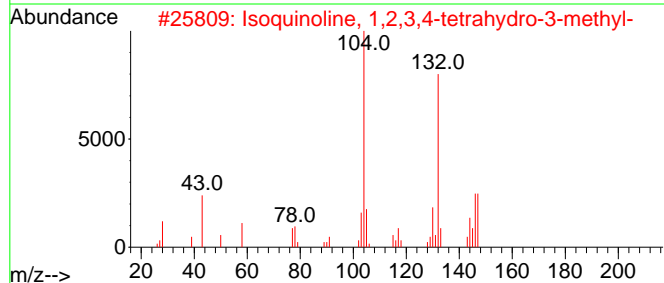
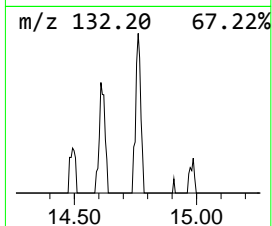
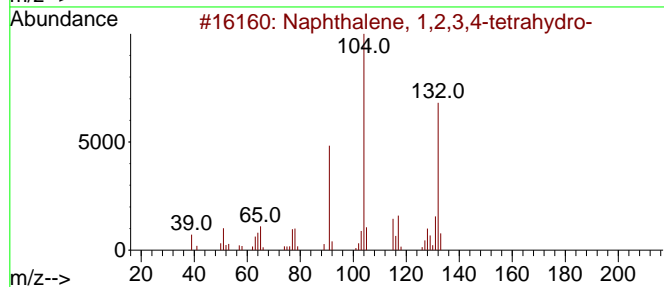
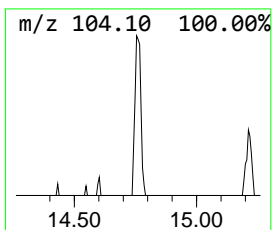
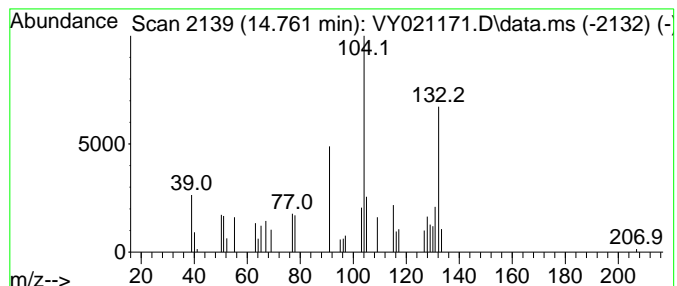
Quant Method : Z:\voasrv\HPCHEM1\MSVOA_Y\methods\82Y020325S.M
 Quant Title : SW846 8260

TIC Library : C:\Database\NIST20.L
 TIC Integration Parameters: LSCINT.P

 Peak Number 10 Naphthalene, 1,2,3,4-tetra... Concentration Rank 6

R.T.	EstConc	Area	Relative to ISTD	R.T.
14.761	6.82 ug/l	7769	1,4-Dichlorobenzene-d4	13.359

Hit#	of 5	Tentative ID	MW	MolForm	CAS#	Qual
1		Naphthalene, 1,2,3,4-tetrahydro-	132	C10H12	000119-64-2	68
2		Isoquinoline, 1,2,3,4-tetrahydro...	147	C10H13N	029726-60-1	64
3		2H-Inden-2-one, 1,3-dihydro-	132	C9H8O	000615-13-4	52
4		5-Aminoindole	132	C8H8N2	005192-03-0	50
5		1H-Inden-1-one, 2,3-dihydro-	132	C9H8O	000083-33-0	49



Data Path : Z:\voasrv\HPCHEM1\MSVOA_Y\Data\VY021125\
Data File : VY021171.D
Acq On : 11 Feb 2025 15:38
Operator : SY/MD
Sample : Q1345-01
Misc : 5.06g/5.0mL/MSVOA_Y/SOIL/A
ALS Vial : 9 Sample Multiplier: 1

Instrument :
MSVOA_Y
ClientSampleId :
EO-01-021025

Quant Method : Z:\voasrv\HPCHEM1\MSVOA_Y\methods\82Y020325S.M
Quant Title : SW846 8260

TIC Library : C:\Database\NIST0.L
TIC Integration Parameters: LSCINT.P

TIC Top Hit name	RT	EstConc	Units	Response	--Internal Standard--			
					#	RT	Resp	Conc
Decane, 4-methyl-	12.975	6.4	ug/l	7345	4	13.359	56999	50.0
unknown13.249	13.249	8.6	ug/l	9748	4	13.359	56999	50.0
Benzene, 1,3-di...	13.596	6.0	ug/l	6793	4	13.359	56999	50.0
Undecane	13.688	31.2	ug/l	35581	4	13.359	56999	50.0
Benzene, 4-ethy...	13.901	6.6	ug/l	7495	4	13.359	56999	50.0
unknown14.011	14.011	9.3	ug/l	10562	4	13.359	56999	50.0
Benzene, 1,2,4,...	14.261	5.6	ug/l	6434	4	13.359	56999	50.0
unknown14.541	14.541	9.3	ug/l	10582	4	13.359	56999	50.0
Benzene, 1,2,3,...	14.602	16.2	ug/l	18486	4	13.359	56999	50.0
Naphthalene, 1,...	14.761	6.8	ug/l	7769	4	13.359	56999	50.0