

Data Path : Z:\voasrv\HPCHEM1\MSVOA_Y\Data\VY021522\
 Data File : VY007504.D
 Acq On : 15 Feb 2022 15:30
 Operator : SY/MD
 Sample : N1539-03
 Misc : 5.49g/5.0mL/MSVOA_Y/SOIL
 ALS Vial : 8 Sample Multiplier: 1

Instrument :
 MSVOA_Y
 ClientSampleId :
 PE-3

Integration Parameters: RTEINT.P

Integrator: RTE
 Smoothing : ON Filtering: 5
 Sampling : 1 Min Area: 3 % of largest Peak
 Start Thrs: 0.2 Max Peaks: 100
 Stop Thrs : 0 Peak Location: TOP

If leading or trailing edge < 100 prefer < Baseline drop else tangent >
 Peak separation: 5

Method : Z:\voasrv\HPCHEM1\MSVOA_Y\methods\82Y021422S.M
 Title : SW846 8260

Signal : TIC: VY007504.D\data.ms

peak #	R.T. min	first scan	max scan	last scan	PK TY	peak height	corr. area	corr. % max.	% of total
1	7.722	958	968	974	rBV	78608	201570	4.72%	0.506%
2	7.795	974	980	988	rVV	137946	328650	7.69%	0.826%
3	8.009	1007	1015	1022	rBV	21499	48725	1.14%	0.122%
4	8.149	1028	1038	1051	rBV	71592	160410	3.75%	0.403%
5	8.332	1062	1068	1078	rVB	33389	85938	2.01%	0.216%
6	8.691	1119	1127	1135	rBV	206019	419301	9.81%	1.053%
7	9.191	1194	1209	1215	rBV6	25497	77253	1.81%	0.194%
8	9.618	1273	1279	1290	rVB	24397	47118	1.10%	0.118%
9	9.752	1296	1301	1308	rVB3	28736	59953	1.40%	0.151%
10	9.825	1308	1313	1317	rBV	24547	45383	1.06%	0.114%
11	9.966	1325	1336	1347	rBV	28799	67233	1.57%	0.169%
12	10.185	1365	1372	1377	rBV	325635	574232	13.43%	1.442%
13	10.246	1377	1382	1390	rVB	1057191	1752002	40.99%	4.401%
14	10.374	1395	1403	1410	rVB4	31927	68900	1.61%	0.173%
15	11.282	1543	1552	1563	rVB2	39330	85627	2.00%	0.215%
16	11.380	1563	1568	1577	rBV	29717	53920	1.26%	0.135%
17	11.490	1579	1586	1596	rBV	307485	517429	12.11%	1.300%
18	11.593	1596	1603	1612	rBV	768277	1229039	28.75%	3.087%
19	11.703	1612	1621	1631	rBV	2167375	4027951	94.23%	10.118%
20	12.032	1664	1675	1684	rBV	1745174	2771198	64.83%	6.961%
21	12.331	1719	1724	1729	rBV	61216	95571	2.24%	0.240%
22	12.489	1744	1750	1760	rVB2	764980	1418661	33.19%	3.564%
23	12.672	1774	1780	1785	rBV	237268	341429	7.99%	0.858%
24	12.733	1785	1790	1794	rVV	1315725	2178912	50.98%	5.473%
25	12.770	1794	1796	1799	rVV	609868	730598	17.09%	1.835%
26	12.813	1799	1803	1809	rVB	785926	1156822	27.06%	2.906%
27	12.971	1820	1829	1838	rBV	598678	994365	23.26%	2.498%
28	13.123	1847	1854	1860	rBV	2852310	4274424	100.00%	10.737%
29	13.239	1866	1873	1878	rBV4	34593	97349	2.28%	0.245%
30	13.312	1878	1885	1890	rVB	78971	130924	3.06%	0.329%
31	13.367	1890	1894	1897	rBV2	53049	77558	1.81%	0.195%
32	13.428	1897	1904	1905	rVV	345400	482842	11.30%	1.213%
33	13.459	1905	1909	1914	rVV	781251	1267703	29.66%	3.184%
34	13.501	1914	1916	1923	rVB3	60180	83165	1.95%	0.209%
35	13.593	1925	1931	1933	rBV	211017	321077	7.51%	0.807%
36	13.623	1933	1936	1940	rVV	882241	1379578	32.28%	3.465%

Data Path : Z:\voasrv\HPCHEM1\MSVOA_Y\Data\VY021522\
 Data File : VY007504.D
 Acq On : 15 Feb 2022 15:30
 Operator : SY/MD
 Sample : N1539-03
 Misc : 5.49g/5.0mL/MSVOA_Y/SOIL
 ALS Vial : 8 Sample Multiplier: 1

Instrument :
 MSVOA_Y
 ClientSampleId :
 PE-3

Integration Parameters: RTEINT.P

Integrator: RTE
 Smoothing : ON Filtering: 5
 Sampling : 1 Min Area: 3 % of largest Peak
 Start Thrs: 0.2 Max Peaks: 100
 Stop Thrs : 0 Peak Location: TOP

If leading or trailing edge < 100 prefer < Baseline drop else tangent >
 Peak separation: 5

Method : Z:\voasrv\HPCHEM1\MSVOA_Y\methods\82Y021422S.M
 Title : SW846 8260

37	13.666	1940	1943	1953	rVB2	626507	1117292	26.14%	2.807%
38	13.751	1953	1957	1962	rBV2	109877	155915	3.65%	0.392%
39	13.825	1962	1969	1974	rVB2	151188	269336	6.30%	0.677%
40	13.886	1974	1979	1982	rBV	359565	583962	13.66%	1.467%
41	13.916	1982	1984	1988	rVV	352999	423415	9.91%	1.064%
42	13.971	1988	1993	1998	rVV	628862	922636	21.59%	2.318%
43	14.032	1998	2003	2006	rVV	73157	107389	2.51%	0.270%
44	14.081	2006	2011	2016	rVB	289177	436633	10.22%	1.097%
45	14.154	2016	2023	2028	rBV7	24284	56090	1.31%	0.141%
46	14.215	2028	2033	2040	rBV	142118	250331	5.86%	0.629%
47	14.294	2040	2046	2050	rVV	347959	631459	14.77%	1.586%
48	14.337	2050	2053	2057	rVV	492092	682215	15.96%	1.714%
49	14.379	2057	2060	2064	rVV	169840	250890	5.87%	0.630%
50	14.422	2064	2067	2073	rVB	92189	120641	2.82%	0.303%
51	14.520	2079	2083	2086	rBV	102028	140889	3.30%	0.354%
52	14.568	2086	2091	2095	rVV	344441	577700	13.52%	1.451%
53	14.611	2095	2098	2103	rVB	189642	265930	6.22%	0.668%
54	14.684	2103	2110	2115	rBV3	540368	1111362	26.00%	2.792%
55	14.739	2115	2119	2125	rVB2	122269	207906	4.86%	0.522%
56	14.837	2131	2135	2138	rBV	45872	59188	1.38%	0.149%
57	14.910	2143	2147	2148	rBV2	45039	63285	1.48%	0.159%
58	14.946	2148	2153	2156	rBV4	154458	258067	6.04%	0.648%
59	15.056	2165	2171	2181	rVB2	143925	309639	7.24%	0.778%
60	15.233	2189	2200	2207	rBV	647506	1170233	27.38%	2.940%
61	15.343	2212	2218	2223	rVV3	100017	185996	4.35%	0.467%
62	15.397	2223	2227	2230	rVV	50288	87389	2.04%	0.220%
63	15.434	2230	2233	2241	rVB3	62562	109027	2.55%	0.274%
64	15.525	2241	2248	2256	rBV	98813	200216	4.68%	0.503%
65	15.696	2265	2276	2285	rBV5	51295	181721	4.25%	0.456%
66	15.818	2290	2296	2301	rVV2	35442	70272	1.64%	0.177%
67	15.891	2301	2308	2324	rVB4	45783	131106	3.07%	0.329%
68	16.288	2366	2373	2381	rVB	345119	682512	15.97%	1.714%
69	16.489	2398	2406	2419	rVB	153733	336353	7.87%	0.845%

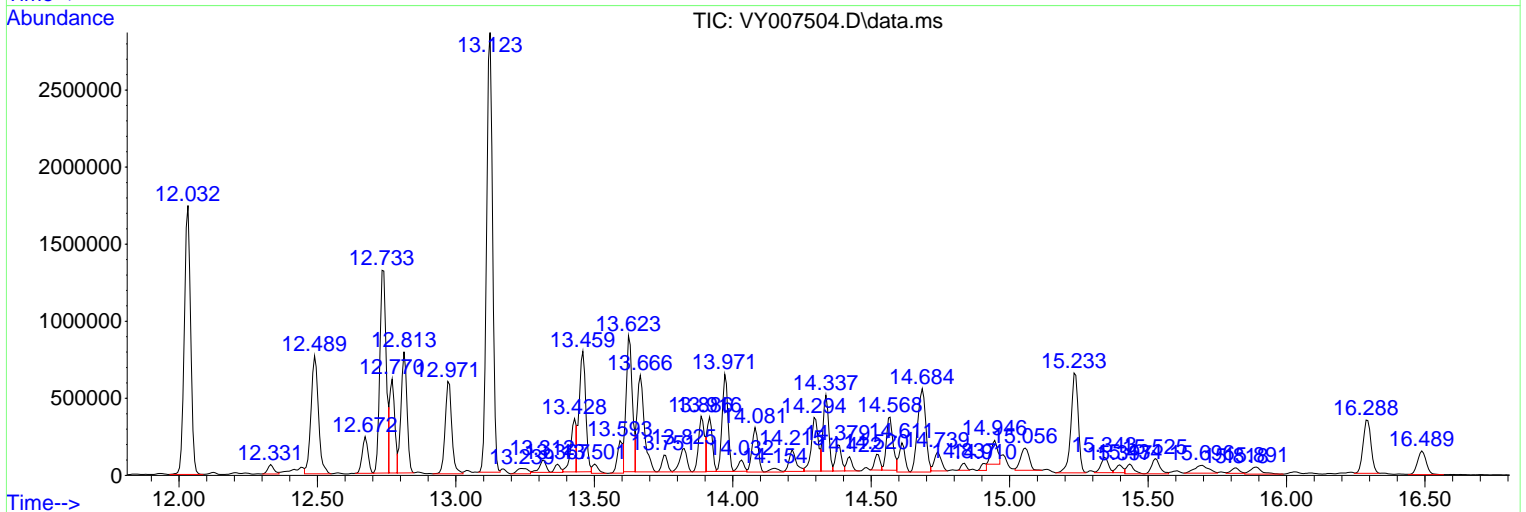
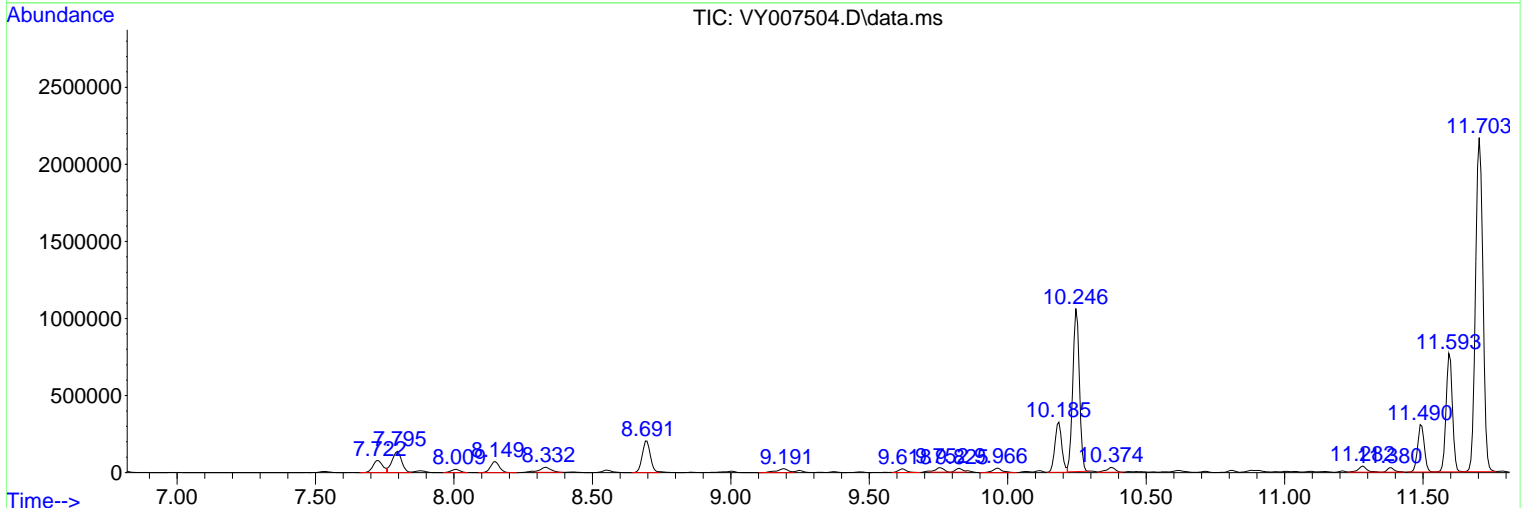
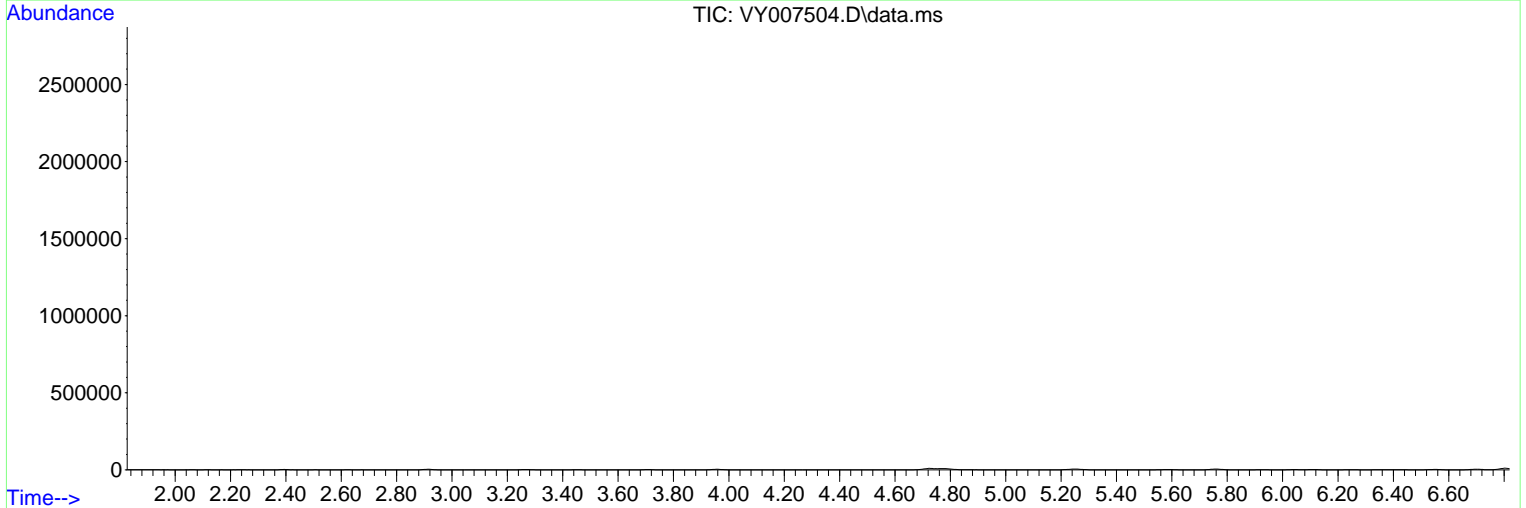
Sum of corrected areas: 39809805

Data Path : Z:\voasrv\HPCHEM1\MSVOA_Y\Data\VY021522\
 Data File : VY007504.D
 Acq On : 15 Feb 2022 15:30
 Operator : SY/MD
 Sample : N1539-03
 Misc : 5.49g/5.0mL/MSVOA_Y/SOIL
 ALS Vial : 8 Sample Multiplier: 1

Instrument :
 MSVOA_Y
 ClientSampleId :
 PE-3

Quant Method : Z:\voasrv\HPCHEM1\MSVOA_Y\methods\82Y021422S.M
 Quant Title : SW846 8260

TIC Library : C:\Database\NIST20.L
 TIC Integration Parameters: LSCINT.P



Data Path : Z:\voasrv\HPCHEM1\MSVOA_Y\Data\VY021522\
 Data File : VY007504.D
 Acq On : 15 Feb 2022 15:30
 Operator : SY/MD
 Sample : N1539-03
 Misc : 5.49g/5.0mL/MSVOA_Y/SOIL
 ALS Vial : 8 Sample Multiplier: 1

Instrument :
 MSVOA_Y
 ClientSampleId :
 PE-3

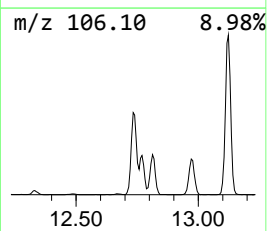
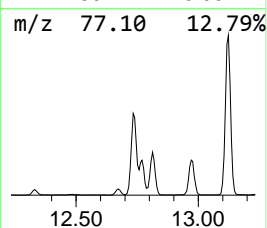
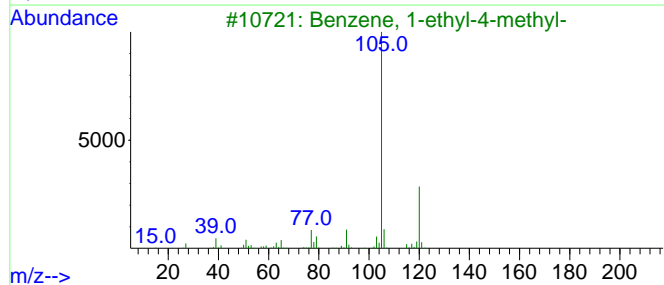
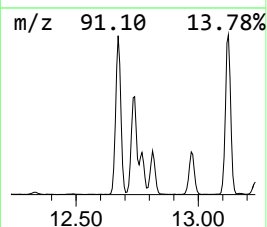
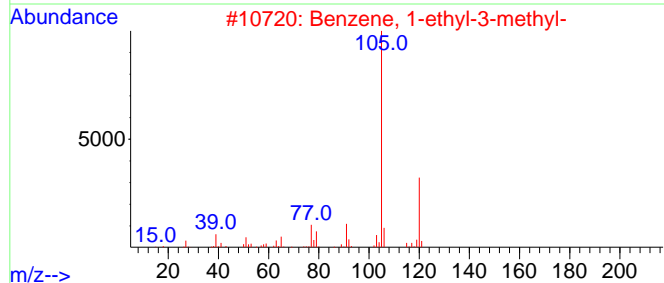
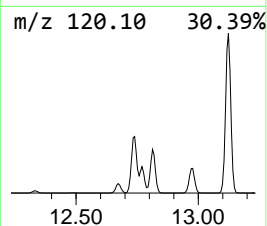
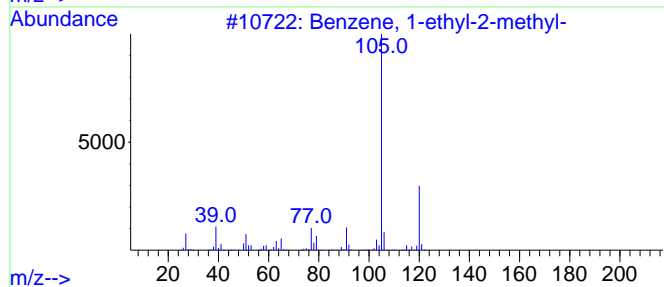
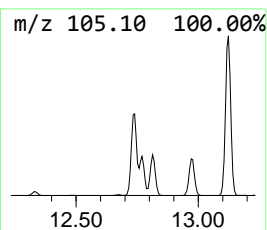
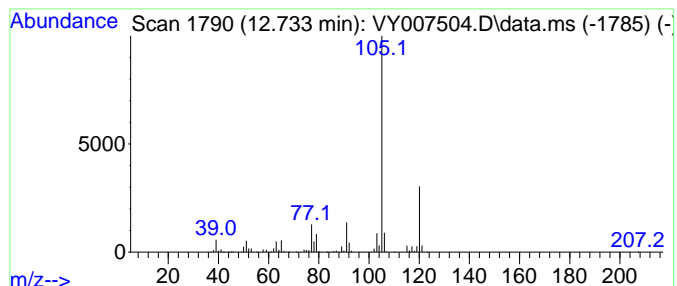
Quant Method : Z:\voasrv\HPCHEM1\MSVOA_Y\methods\82Y021422S.M
 Quant Title : SW846 8260

TIC Library : C:\Database\NIST20.L
 TIC Integration Parameters: LSCINT.P

 Peak Number 1 Benzene, 1-ethyl-2-methyl- Concentration Rank 1

R.T.	EstConc	Area	Relative to ISTD	R.T.
12.733	225.63 ug/l	2178910	1,4-Dichlorobenzene-d4	13.428

Hit#	of	5	Tentative ID	MW	MolForm	CAS#	Qual
1			Benzene, 1-ethyl-2-methyl-	120	C9H12	000611-14-3	95
2			Benzene, 1-ethyl-3-methyl-	120	C9H12	000620-14-4	94
3			Benzene, 1-ethyl-4-methyl-	120	C9H12	000622-96-8	91
4			Mesitylene	120	C9H12	000108-67-8	91
5			Benzene, 1,2,4-trimethyl-	120	C9H12	000095-63-6	91



Data Path : Z:\voasrv\HPCHEM1\MSVOA_Y\Data\VY021522\
 Data File : VY007504.D
 Acq On : 15 Feb 2022 15:30
 Operator : SY/MD
 Sample : N1539-03
 Misc : 5.49g/5.0mL/MSVOA_Y/SOIL
 ALS Vial : 8 Sample Multiplier: 1

Instrument :
 MSVOA_Y
 ClientSampleId :
 PE-3

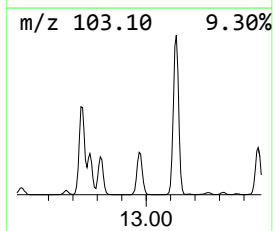
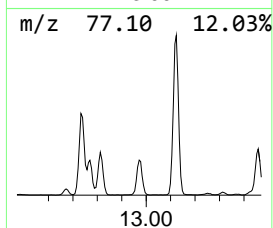
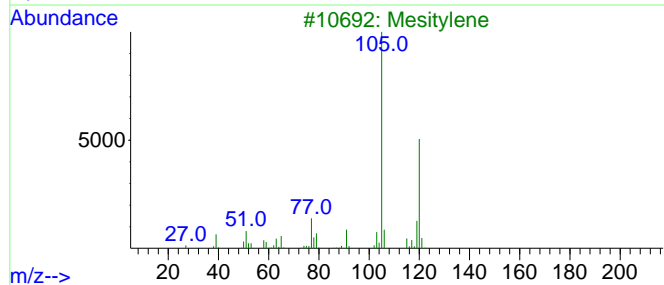
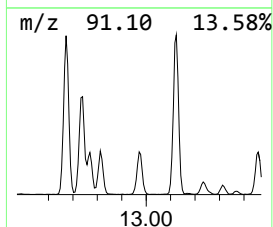
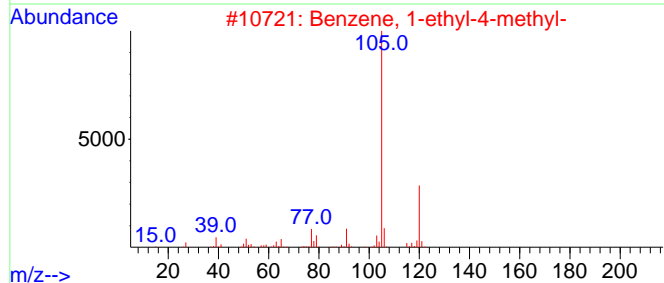
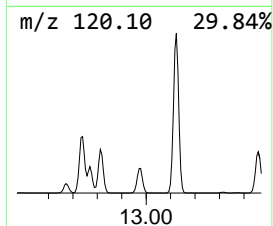
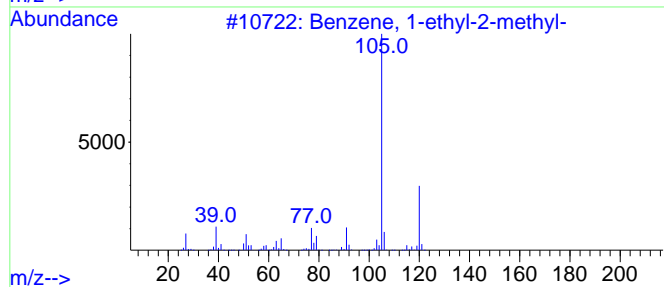
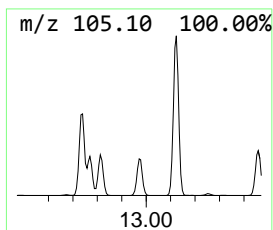
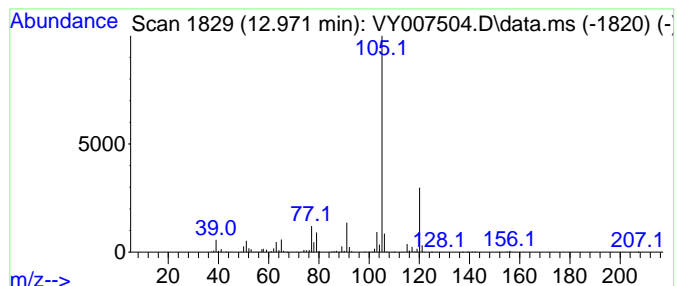
Quant Method : Z:\voasrv\HPCHEM1\MSVOA_Y\methods\82Y021422S.M
 Quant Title : SW846 8260

TIC Library : C:\Database\NIST20.L
 TIC Integration Parameters: LSCINT.P

 Peak Number 2 Benzene, 1-ethyl-4-methyl- Concentration Rank 4

R.T.	EstConc	Area	Relative to ISTD	R.T.
12.971	102.97 ug/l	994365	1,4-Dichlorobenzene-d4	13.428

Hit#	of	5	Tentative ID	MW	MolForm	CAS#	Qual
1			Benzene, 1-ethyl-2-methyl-	120	C9H12	000611-14-3	94
2			Benzene, 1-ethyl-4-methyl-	120	C9H12	000622-96-8	91
3			Mesitylene	120	C9H12	000108-67-8	91
4			Benzene, 1-ethyl-3-methyl-	120	C9H12	000620-14-4	91
5			Benzene, 1,2,3-trimethyl-	120	C9H12	000526-73-8	91



Data Path : Z:\voasrv\HPCHEM1\MSVOA_Y\Data\VY021522\
 Data File : VY007504.D
 Acq On : 15 Feb 2022 15:30
 Operator : SY/MD
 Sample : N1539-03
 Misc : 5.49g/5.0mL/MSVOA_Y/SOIL
 ALS Vial : 8 Sample Multiplier: 1

Instrument :
 MSVOA_Y
 ClientSampleId :
 PE-3

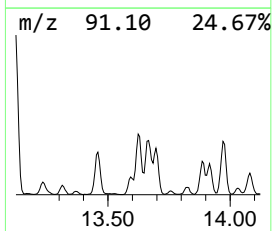
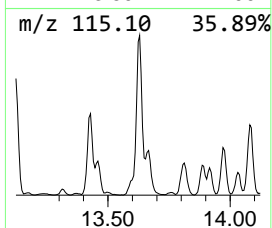
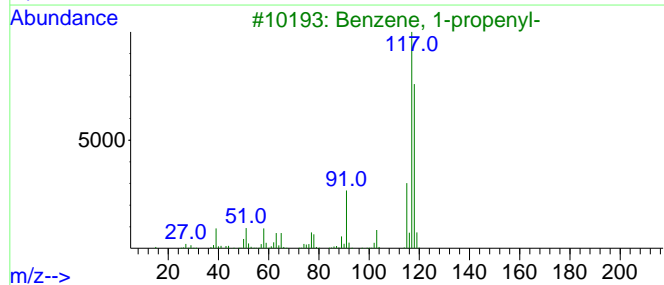
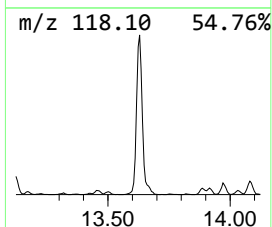
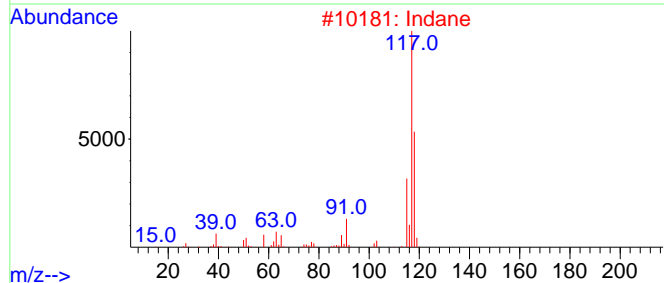
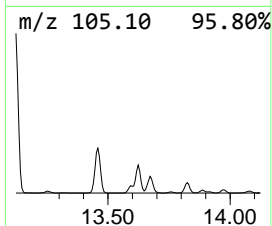
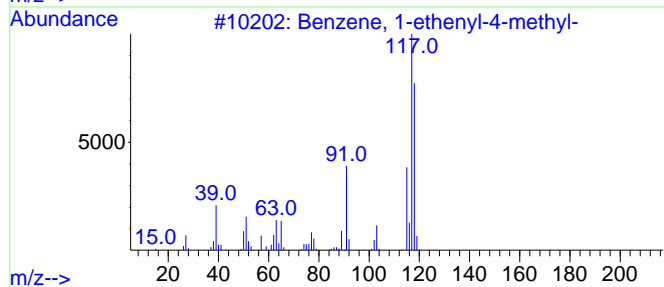
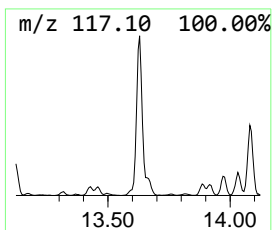
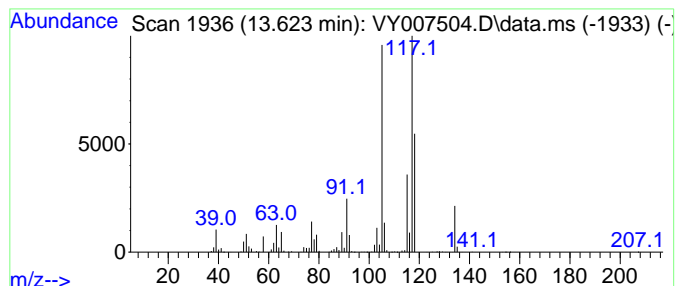
Quant Method : Z:\voasrv\HPCHEM1\MSVOA_Y\methods\82Y021422S.M
 Quant Title : SW846 8260

TIC Library : C:\Database\NIST20.L
 TIC Integration Parameters: LSCINT.P

 Peak Number 3 Benzene, 1-ethenyl-4-methyl- Concentration Rank 2

R.T.	EstConc	Area	Relative to ISTD	R.T.
13.623	142.86 ug/l	1379580	1,4-Dichlorobenzene-d4	13.428

Hit#	of	5	Tentative ID	MW	MolForm	CAS#	Qual
1			Benzene, 1-ethenyl-4-methyl-	118	C9H10	000622-97-9	83
2			Indane	118	C9H10	000496-11-7	64
3			Benzene, 1-propenyl-	118	C9H10	000637-50-3	64
4			Benzene, cyclopropyl-	118	C9H10	000873-49-4	64
5			Benzene, 1-ethenyl-2-methyl-	118	C9H10	000611-15-4	64



Data Path : Z:\voasrv\HPCHEM1\MSVOA_Y\Data\VY021522\
 Data File : VY007504.D
 Acq On : 15 Feb 2022 15:30
 Operator : SY/MD
 Sample : N1539-03
 Misc : 5.49g/5.0mL/MSVOA_Y/SOIL
 ALS Vial : 8 Sample Multiplier: 1

Instrument :
 MSVOA_Y
 ClientSampleId :
 PE-3

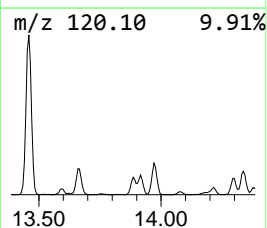
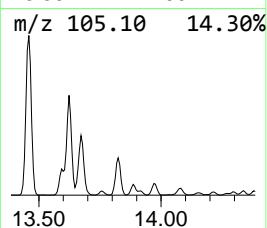
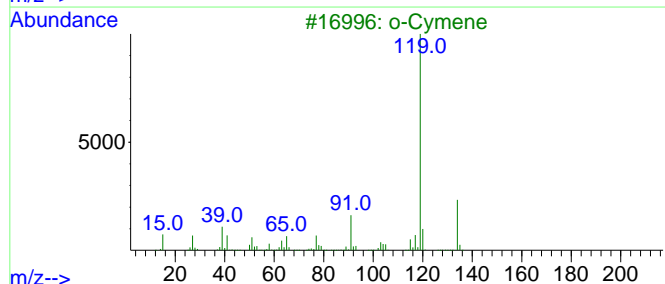
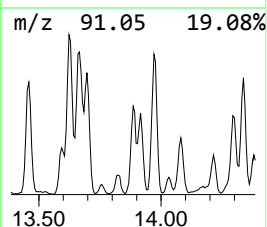
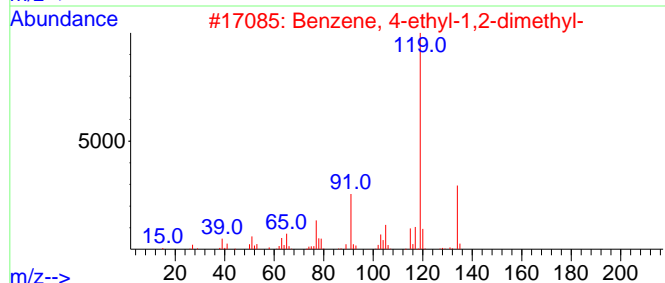
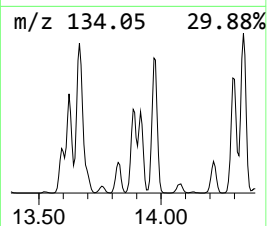
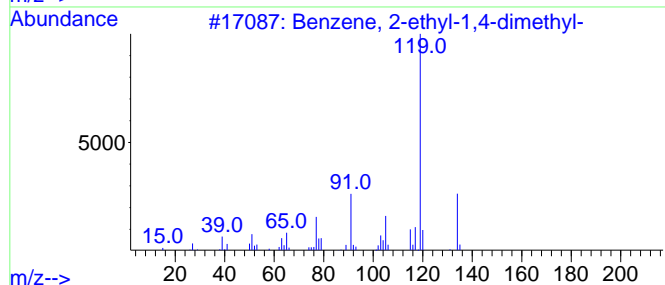
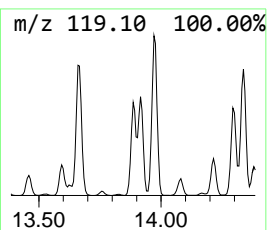
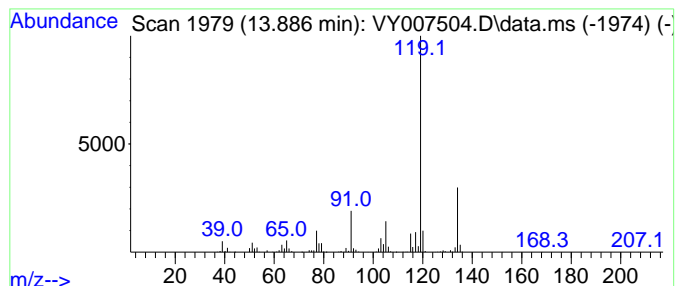
Quant Method : Z:\voasrv\HPCHEM1\MSVOA_Y\methods\82Y021422S.M
 Quant Title : SW846 8260

TIC Library : C:\Database\NIST20.L
 TIC Integration Parameters: LSCINT.P

 Peak Number 4 Benzene, 2-ethyl-1,4-dimethyl- Concentration Rank 9

R.T.	EstConc	Area	Relative to ISTD	R.T.
13.886	60.47 ug/l	583962	1,4-Dichlorobenzene-d4	13.428

Hit#	of	5	Tentative ID	MW	MolForm	CAS#	Qual
1			Benzene, 2-ethyl-1,4-dimethyl-	134	C10H14	001758-88-9	96
2			Benzene, 4-ethyl-1,2-dimethyl-	134	C10H14	000934-80-5	96
3			o-Cymene	134	C10H14	000527-84-4	95
4			p-Cymene	134	C10H14	000099-87-6	95
5			Benzene, 1-ethyl-2,3-dimethyl-	134	C10H14	000933-98-2	95



Data Path : Z:\voasrv\HPCHEM1\MSVOA_Y\Data\VY021522\
 Data File : VY007504.D
 Acq On : 15 Feb 2022 15:30
 Operator : SY/MD
 Sample : N1539-03
 Misc : 5.49g/5.0mL/MSVOA_Y/SOIL
 ALS Vial : 8 Sample Multiplier: 1

Instrument :
 MSVOA_Y
 ClientSampleId :
 PE-3

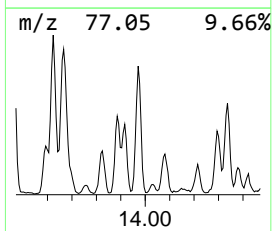
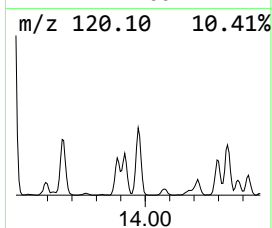
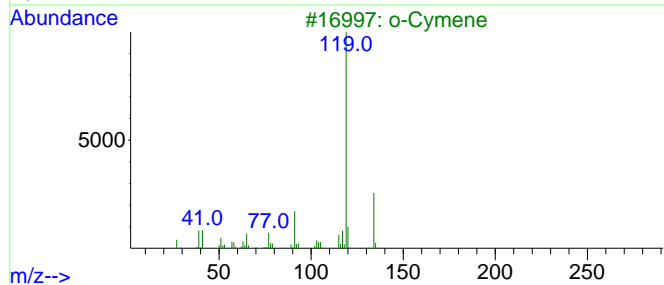
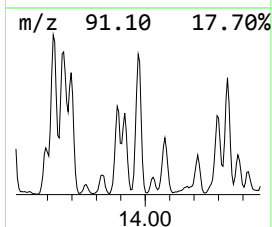
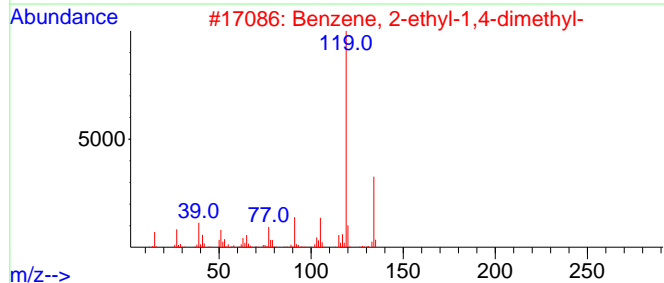
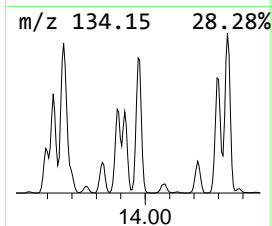
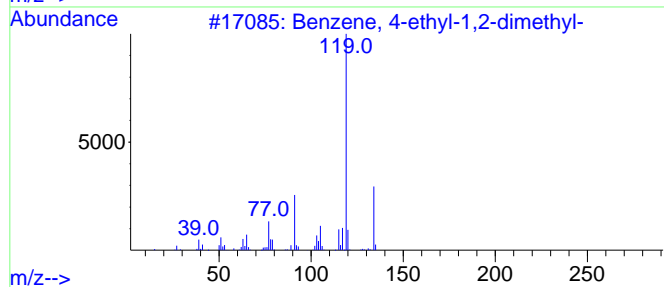
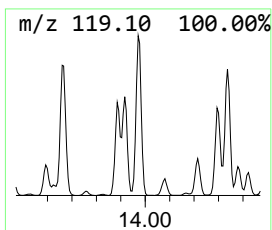
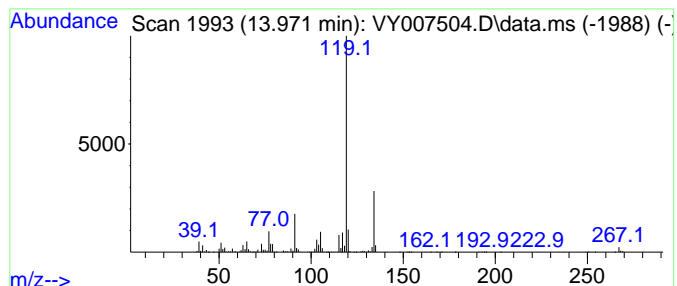
Quant Method : Z:\voasrv\HPCHEM1\MSVOA_Y\methods\82Y021422S.M
 Quant Title : SW846 8260

TIC Library : C:\Database\NIST0.L
 TIC Integration Parameters: LSCINT.P

 Peak Number 5 Benzene, 4-ethyl-1,2-dimethyl- Concentration Rank 5

R.T.	EstConc	Area	Relative to ISTD	R.T.
13.971	95.54 ug/l	922636	1,4-Dichlorobenzene-d4	13.428

Hit#	of	Tentative ID	MW	MolForm	CAS#	Qual
1	5	Benzene, 4-ethyl-1,2-dimethyl-	134	C10H14	000934-80-5	96
2		Benzene, 2-ethyl-1,4-dimethyl-	134	C10H14	001758-88-9	95
3		o-Cymene	134	C10H14	000527-84-4	95
4		Benzene, 1-methyl-3-(1-methyleth...	134	C10H14	000535-77-3	95
5		p-Cymene	134	C10H14	000099-87-6	95



Data Path : Z:\voasrv\HPCHEM1\MSVOA_Y\Data\VY021522\
 Data File : VY007504.D
 Acq On : 15 Feb 2022 15:30
 Operator : SY/MD
 Sample : N1539-03
 Misc : 5.49g/5.0mL/MSVOA_Y/SOIL
 ALS Vial : 8 Sample Multiplier: 1

Instrument :
 MSVOA_Y
 ClientSampleId :
 PE-3

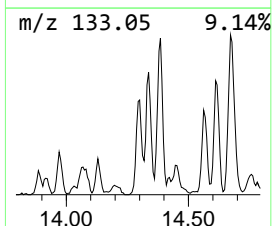
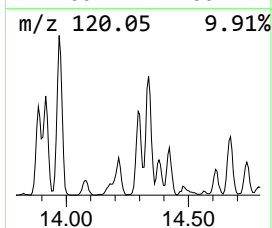
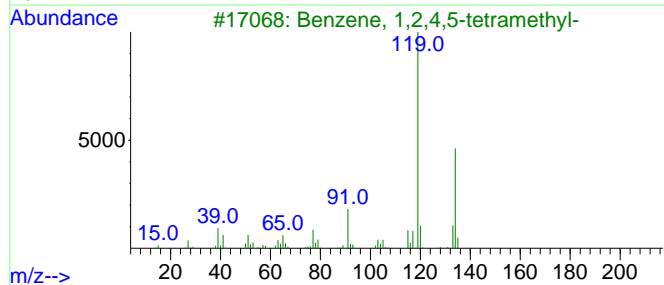
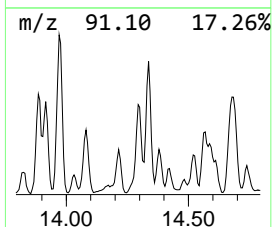
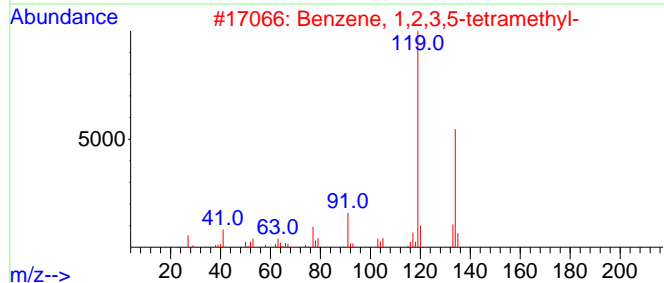
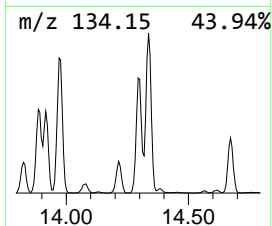
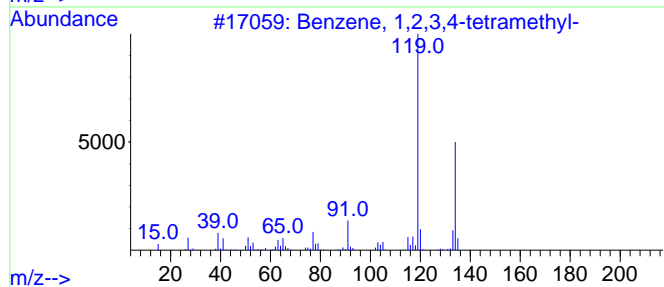
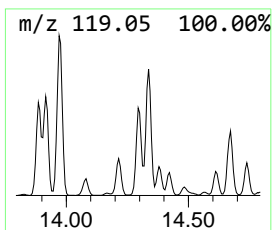
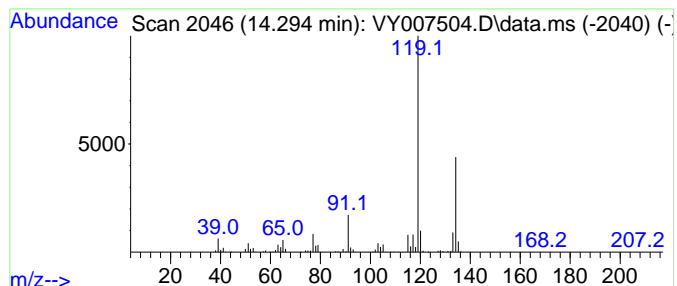
Quant Method : Z:\voasrv\HPCHEM1\MSVOA_Y\methods\82Y021422S.M
 Quant Title : SW846 8260

TIC Library : C:\Database\NIST20.L
 TIC Integration Parameters: LSCINT.P

 Peak Number 6 Benzene, 1,2,3,4-tetramethyl- Concentration Rank 8

R.T.	EstConc	Area	Relative to ISTD	R.T.
14.294	65.39 ug/l	631459	1,4-Dichlorobenzene-d4	13.428

Hit#	of	5	Tentative ID	MW	MolForm	CAS#	Qual
1			Benzene, 1,2,3,4-tetramethyl-	134	C10H14	000488-23-3	97
2			Benzene, 1,2,3,5-tetramethyl-	134	C10H14	000527-53-7	96
3			Benzene, 1,2,4,5-tetramethyl-	134	C10H14	000095-93-2	96
4			o-Cymene	134	C10H14	000527-84-4	95
5			Benzene, 2-ethyl-1,3-dimethyl-	134	C10H14	002870-04-4	94



Data Path : Z:\voasrv\HPCHEM1\MSVOA_Y\Data\VY021522\
 Data File : VY007504.D
 Acq On : 15 Feb 2022 15:30
 Operator : SY/MD
 Sample : N1539-03
 Misc : 5.49g/5.0mL/MSVOA_Y/SOIL
 ALS Vial : 8 Sample Multiplier: 1

Instrument :
 MSVOA_Y
 ClientSampleId :
 PE-3

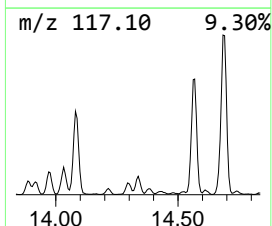
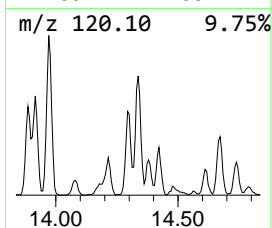
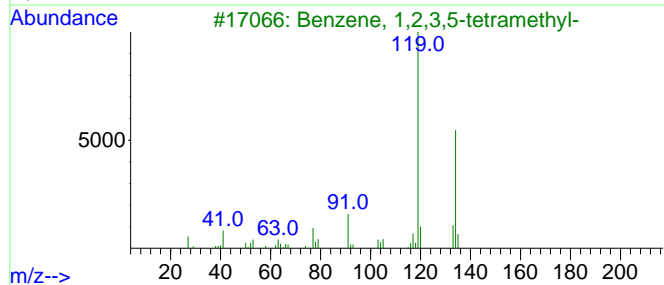
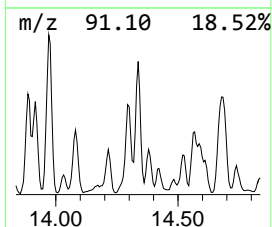
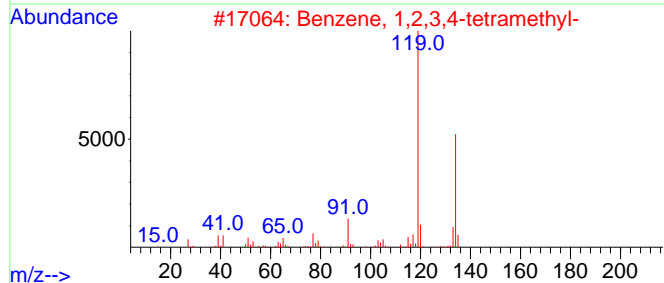
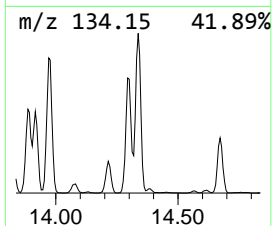
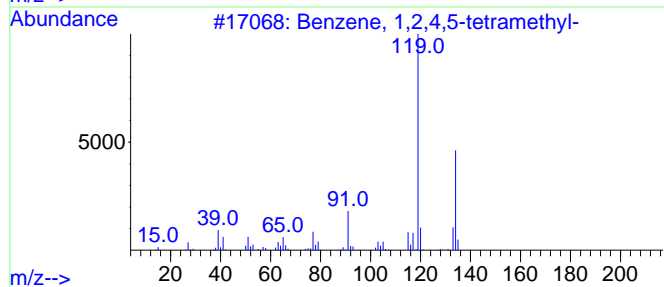
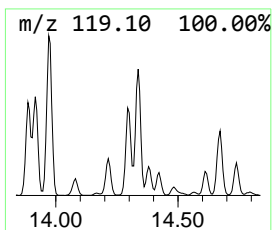
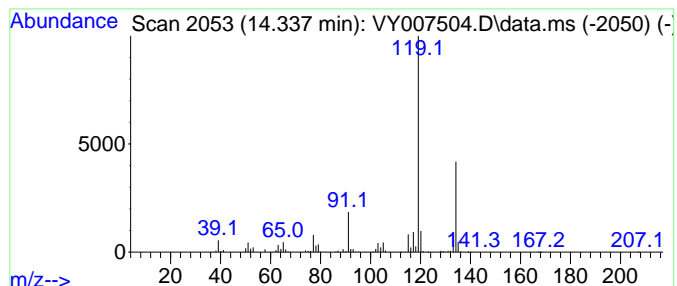
Quant Method : Z:\voasrv\HPCHEM1\MSVOA_Y\methods\82Y021422S.M
 Quant Title : SW846 8260

TIC Library : C:\Database\NIST20.L
 TIC Integration Parameters: LSCINT.P

 Peak Number 7 Benzene, 1,2,4,5-tetramethyl- Concentration Rank 7

R.T.	EstConc	Area	Relative to ISTD	R.T.
14.337	70.65 ug/l	682215	1,4-Dichlorobenzene-d4	13.428

Hit#	of	Tentative ID	MW	MolForm	CAS#	Qual
1	5	Benzene, 1,2,4,5-tetramethyl-	134	C10H14	000095-93-2	97
2		Benzene, 1,2,3,4-tetramethyl-	134	C10H14	000488-23-3	95
3		Benzene, 1,2,3,5-tetramethyl-	134	C10H14	000527-53-7	95
4		Benzene, 1-ethyl-2,4-dimethyl-	134	C10H14	000874-41-9	94
5		o-Cymene	134	C10H14	000527-84-4	94



Data Path : Z:\voasrv\HPCHEM1\MSVOA_Y\Data\VY021522\
 Data File : VY007504.D
 Acq On : 15 Feb 2022 15:30
 Operator : SY/MD
 Sample : N1539-03
 Misc : 5.49g/5.0mL/MSVOA_Y/SOIL
 ALS Vial : 8 Sample Multiplier: 1

Instrument :
 MSVOA_Y
 ClientSampleId :
 PE-3

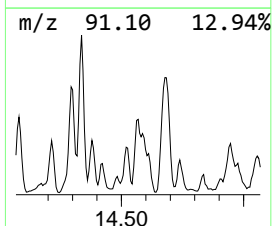
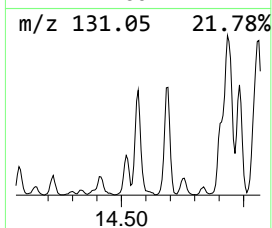
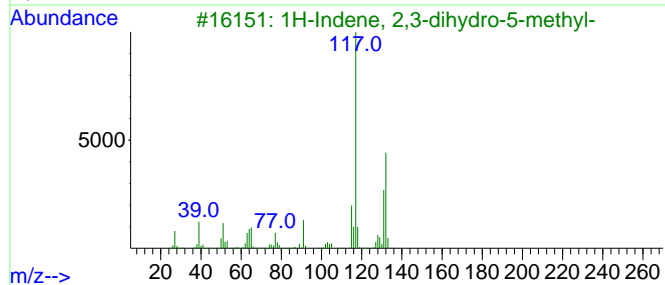
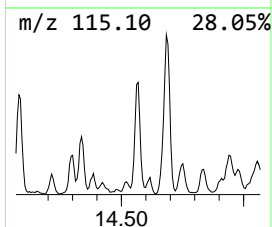
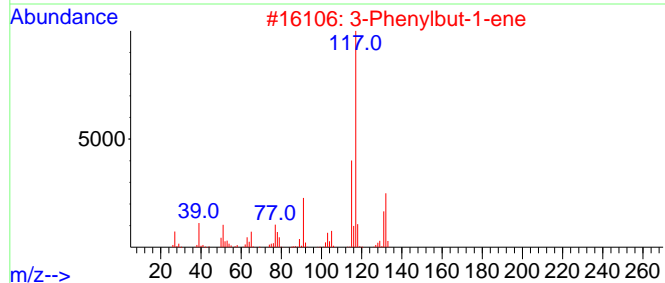
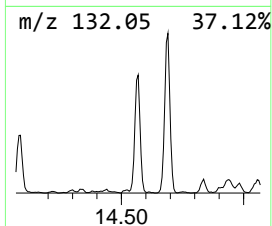
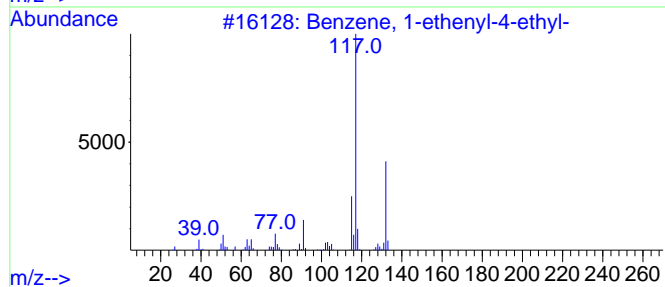
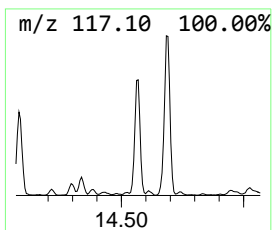
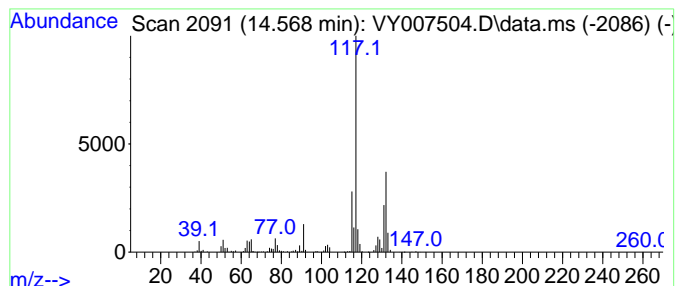
Quant Method : Z:\voasrv\HPCHEM1\MSVOA_Y\methods\82Y021422S.M
 Quant Title : SW846 8260

TIC Library : C:\Database\NIST0.L
 TIC Integration Parameters: LSCINT.P

 Peak Number 8 Benzene, 1-ethenyl-4-ethyl- Concentration Rank 10

R.T.	EstConc	Area	Relative to ISTD	R.T.
14.568	59.82 ug/l	577700	1,4-Dichlorobenzene-d4	13.428

Hit#	of	5	Tentative ID	MW	MolForm	CAS#	Qual
1			Benzene, 1-ethenyl-4-ethyl-	132	C10H12	003454-07-7	93
2			3-Phenylbut-1-ene	132	C10H12	000934-10-1	91
3			1H-Indene, 2,3-dihydro-5-methyl-	132	C10H12	000874-35-1	87
4			1H-Indene, 2,3-dihydro-4-methyl-	132	C10H12	000824-22-6	87
5			Benzene, 2-ethenyl-1,3-dimethyl-	132	C10H12	002039-90-9	83



Data Path : Z:\voasrv\HPCHEM1\MSVOA_Y\Data\VY021522\
 Data File : VY007504.D
 Acq On : 15 Feb 2022 15:30
 Operator : SY/MD
 Sample : N1539-03
 Misc : 5.49g/5.0mL/MSVOA_Y/SOIL
 ALS Vial : 8 Sample Multiplier: 1

Instrument :
 MSVOA_Y
 ClientSampleId :
 PE-3

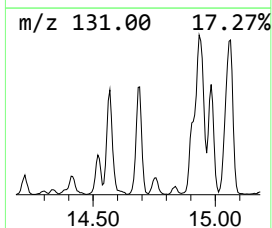
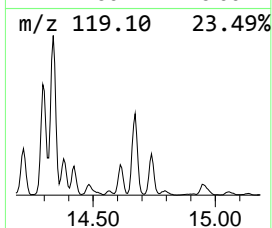
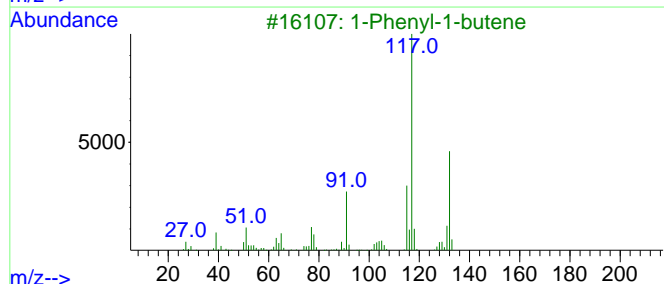
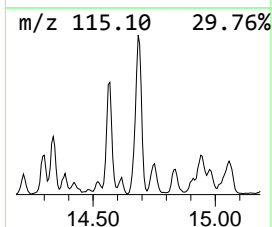
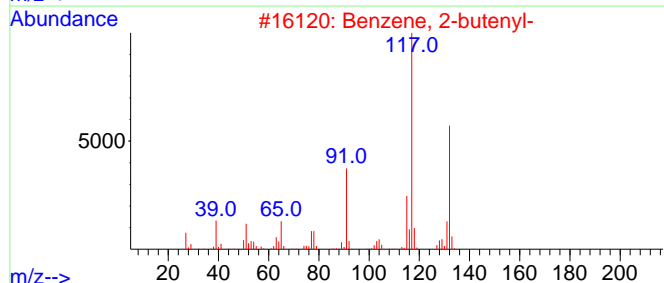
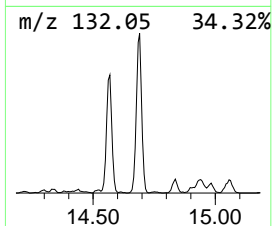
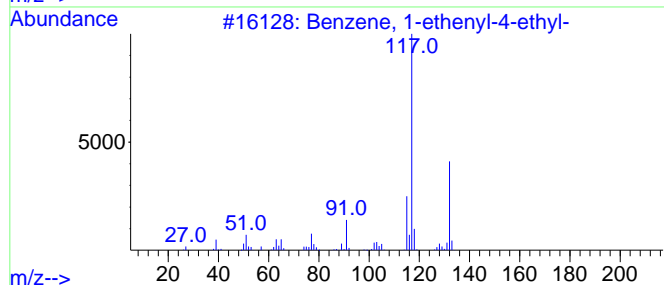
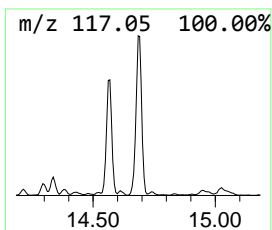
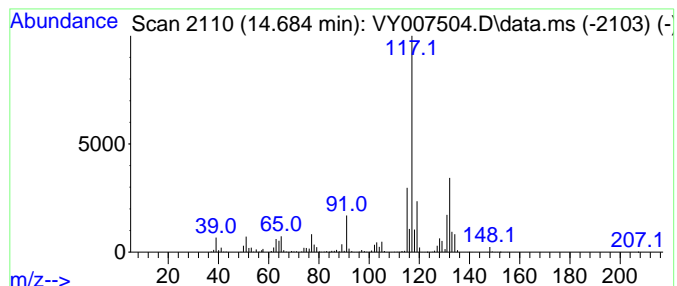
Quant Method : Z:\voasrv\HPCHEM1\MSVOA_Y\methods\82Y021422S.M
 Quant Title : SW846 8260

TIC Library : C:\Database\NIST20.L
 TIC Integration Parameters: LSCINT.P

 Peak Number 9 Benzene, 2-butenyl- Concentration Rank 3

R.T.	EstConc	Area	Relative to ISTD	R.T.
14.684	115.08 ug/l	1111360	1,4-Dichlorobenzene-d4	13.428

Hit#	of 5	Tentative ID	MW	MolForm	CAS#	Qual
1		Benzene, 1-ethenyl-4-ethyl-	132	C10H12	003454-07-7	93
2		Benzene, 2-butenyl-	132	C10H12	001560-06-1	87
3		1-Phenyl-1-butene	132	C10H12	000824-90-8	87
4		Benzene, (1-methyl-1-propenyl)-,...	132	C10H12	000768-00-3	81
5		3-Phenylbut-1-ene	132	C10H12	000934-10-1	81



Data Path : Z:\voasrv\HPCHEM1\MSVOA_Y\Data\VY021522\
 Data File : VY007504.D
 Acq On : 15 Feb 2022 15:30
 Operator : SY/MD
 Sample : N1539-03
 Misc : 5.49g/5.0mL/MSVOA_Y/SOIL
 ALS Vial : 8 Sample Multiplier: 1

Instrument :
 MSVOA_Y
 ClientSampleId :
 PE-3

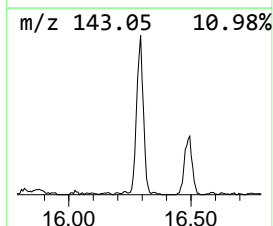
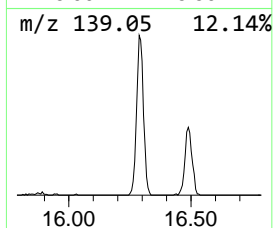
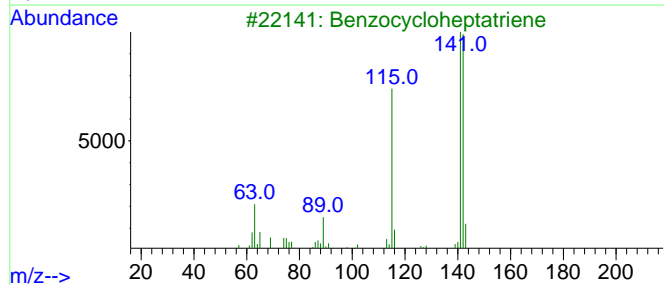
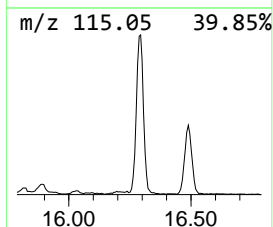
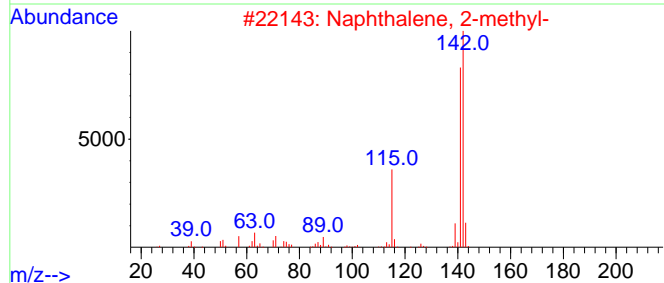
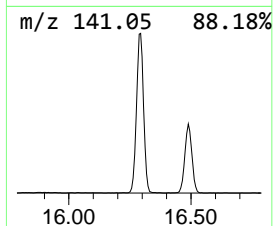
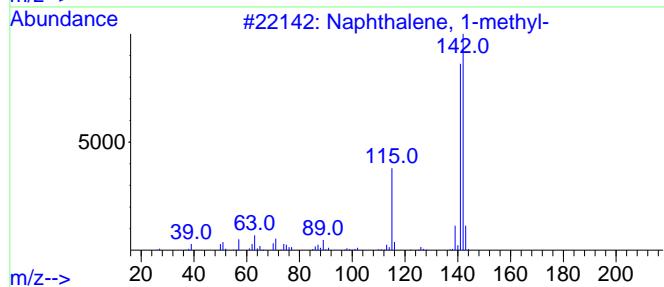
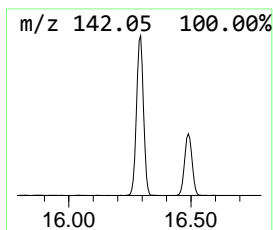
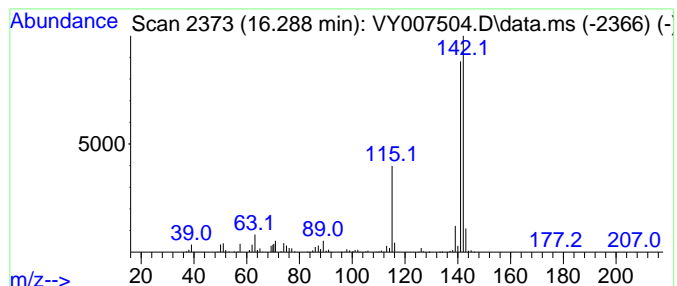
Quant Method : Z:\voasrv\HPCHEM1\MSVOA_Y\methods\82Y021422S.M
 Quant Title : SW846 8260

TIC Library : C:\Database\NIST20.L
 TIC Integration Parameters: LSCINT.P

 Peak Number 10 Naphthalene, 1-methyl- Concentration Rank 6

R.T.	EstConc	Area	Relative to ISTD	R.T.
16.288	70.68 ug/l	682512	1,4-Dichlorobenzene-d4	13.428

Hit#	of	5	Tentative ID	MW	MolForm	CAS#	Qual
1			Naphthalene, 1-methyl-	142	C11H10	000090-12-0	96
2			Naphthalene, 2-methyl-	142	C11H10	000091-57-6	96
3			Benzocycloheptatriene	142	C11H10	000264-09-5	94
4			1H-Indene, 1-ethylidene-	142	C11H10	002471-83-2	94
5			1,4-Methanonaphthalene, 1,4-dihy...	142	C11H10	004453-90-1	94



Data Path : Z:\voasrv\HPCHEM1\MSVOA_Y\Data\VY021522\
 Data File : VY007504.D
 Acq On : 15 Feb 2022 15:30
 Operator : SY/MD
 Sample : N1539-03
 Misc : 5.49g/5.0mL/MSVOA_Y/SOIL
 ALS Vial : 8 Sample Multiplier: 1

Instrument :
 MSVOA_Y
 ClientSampleId :
 PE-3

Quant Method : Z:\voasrv\HPCHEM1\MSVOA_Y\methods\82Y021422S.M
 Quant Title : SW846 8260

TIC Library : C:\Database\NIST0.L
 TIC Integration Parameters: LSCINT.P

TIC Top Hit name	RT	EstConc	Units	Response	--Internal Standard--			
					#	RT	Resp	Conc
Benzene, 1-ethy...	12.733	225.6	ug/l	2178910	4	13.428	482842	50.0
Benzene, 1-ethy...	12.971	103.0	ug/l	994365	4	13.428	482842	50.0
Benzene, 1-ethe...	13.623	142.9	ug/l	1379580	4	13.428	482842	50.0
Benzene, 2-ethy...	13.886	60.5	ug/l	583962	4	13.428	482842	50.0
Benzene, 4-ethy...	13.971	95.5	ug/l	922636	4	13.428	482842	50.0
Benzene, 1,2,3,...	14.294	65.4	ug/l	631459	4	13.428	482842	50.0
Benzene, 1,2,4,...	14.337	70.7	ug/l	682215	4	13.428	482842	50.0
Benzene, 1-ethe...	14.568	59.8	ug/l	577700	4	13.428	482842	50.0
Benzene, 2-bute...	14.684	115.1	ug/l	1111360	4	13.428	482842	50.0
Naphthalene, 1-...	16.288	70.7	ug/l	682512	4	13.428	482842	50.0