

Data Path : Z:\voasrv\HPCHEM1\MSVOA_Y\Data\VY021623\
 Data File : VY012630.D
 Acq On : 16 Feb 2023 12:05
 Operator : KP/MD
 Sample : 01552-18
 Misc : 5.01g/5.0mL/MSVOA_Y/SOIL
 ALS Vial : 7 Sample Multiplier: 1

Instrument :
 MSVOA_Y
 ClientSampleId :
 SB-02-4.0-6.0

Quant Time: Feb 16 21:57:47 2023
 Quant Method : Z:\voasrv\HPCHEM1\MSVOA_Y\methods\82Y020723S.M
 Quant Title : SW846 8260
 QLast Update : Wed Feb 08 01:09:03 2023
 Response via : Initial Calibration

Compound	R.T.	QIon	Response	Conc	Units	Dev(Min)

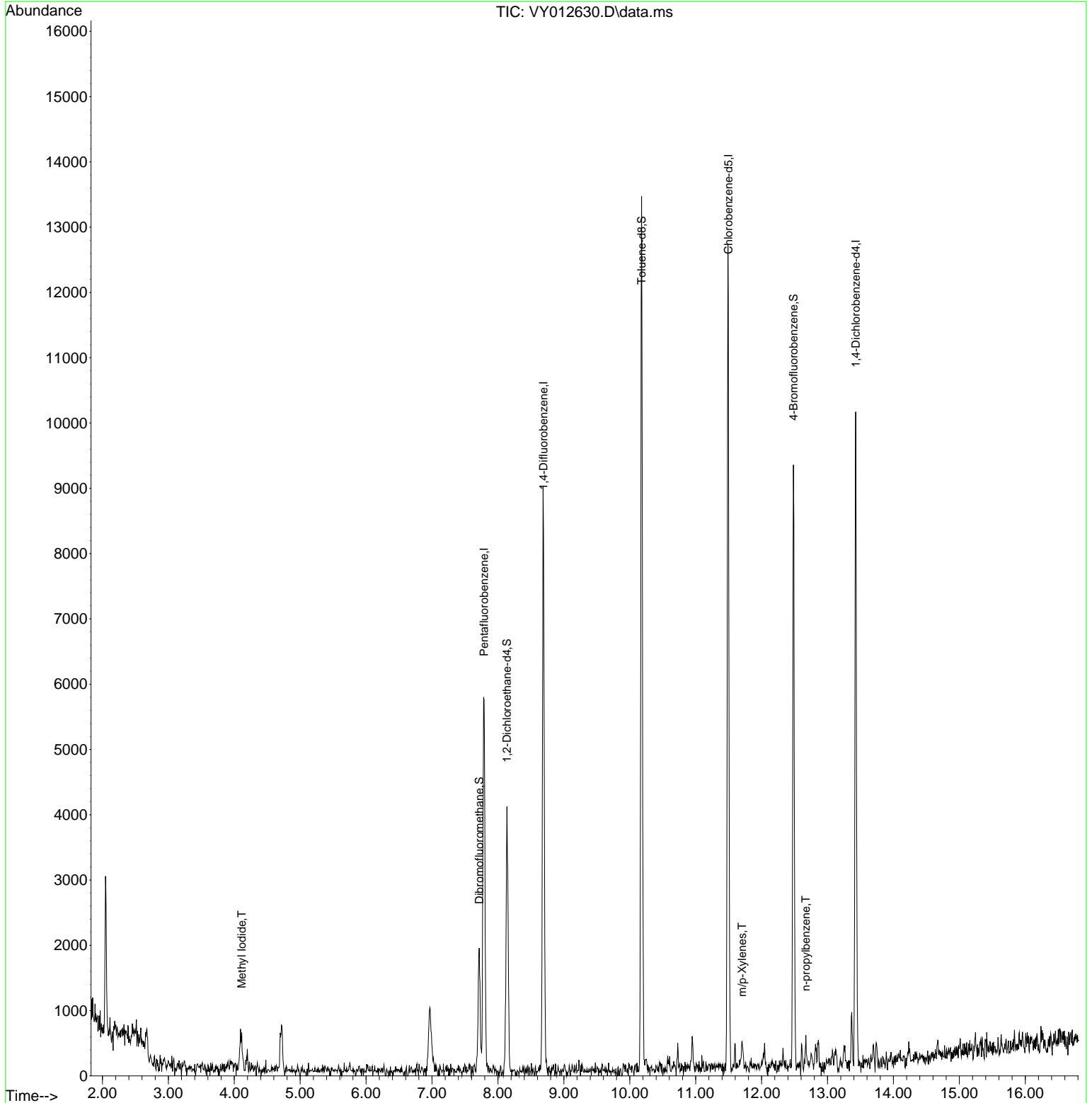
Internal Standards						
1) Pentafluorobenzene	7.789	168	5123	50.000	ug/l	0.00
34) 1,4-Difluorobenzene	8.691	114	8477	50.000	ug/l	0.00
63) Chlorobenzene-d5	11.496	117	8240	50.000	ug/l	0.00
72) 1,4-Dichlorobenzene-d4	13.428	152	2842	50.000	ug/l	0.00
System Monitoring Compounds						
33) 1,2-Dichloroethane-d4	8.136	65	3403	52.237	ug/l	0.00
Spiked Amount	50.000	Range	50 - 163	Recovery	=	104.480%
35) Dibromofluoromethane	7.716	113	1379	22.338	ug/l	0.00
Spiked Amount	50.000	Range	54 - 147	Recovery	=	44.680%#
50) Toluene-d8	10.179	98	9766	38.006	ug/l	0.00
Spiked Amount	50.000	Range	49 - 140	Recovery	=	76.020%
62) 4-Bromofluorobenzene	12.483	95	2914	32.512	ug/l	0.00
Spiked Amount	50.000	Range	25 - 144	Recovery	=	65.020%
Target Compounds						
					Qvalue	
10) Methyl Iodide	4.113	142	951	14.212	ug/l #	84
68) m/p-Xylenes	11.703	106	192	1.402	ug/l	80
78) n-propylbenzene	12.672	91	460	1.738	ug/l #	71

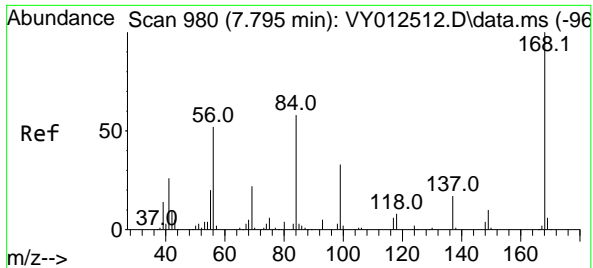
(#) = qualifier out of range (m) = manual integration (+) = signals summed

Data Path : Z:\voasrv\HPCHEM1\MSVOA_Y\Data\VY021623\
 Data File : VY012630.D
 Acq On : 16 Feb 2023 12:05
 Operator : KP/MD
 Sample : 01552-18
 Misc : 5.01g/5.0mL/MSVOA_Y/SOIL
 ALS Vial : 7 Sample Multiplier: 1

Instrument :
 MSVOA_Y
 ClientSampleId :
 SB-02-4.0-6.0

Quant Time: Feb 16 21:57:47 2023
 Quant Method : Z:\voasrv\HPCHEM1\MSVOA_Y\methods\82Y020723S.M
 Quant Title : SW846 8260
 QLast Update : Wed Feb 08 01:09:03 2023
 Response via : Initial Calibration

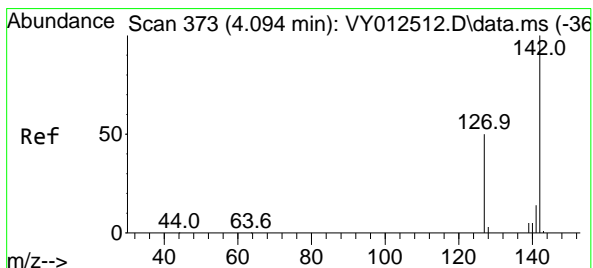
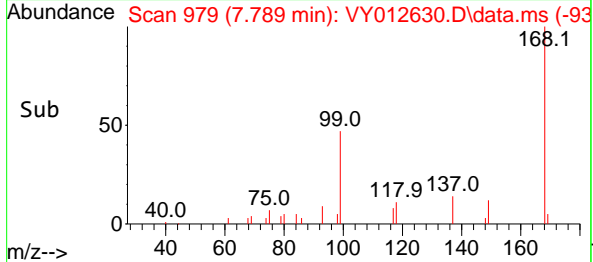
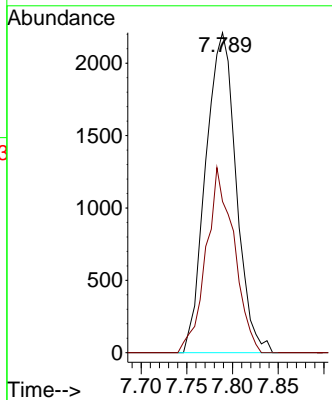
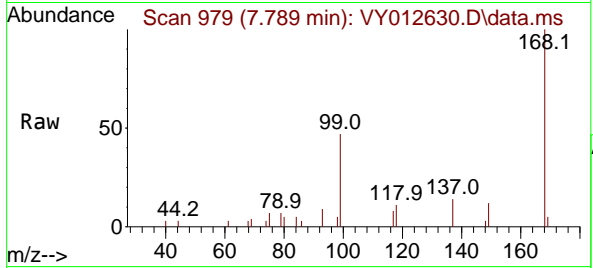




#1
 Pentafluorobenzene
 Concen: 50.000 ug/l
 RT: 7.789 min Scan# 91
 Delta R.T. -0.006 min
 Lab File: VY012630.D
 Acq: 16 Feb 2023 12:05

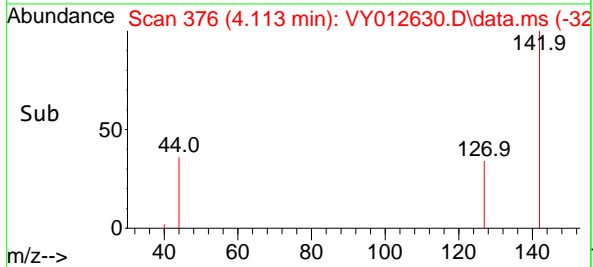
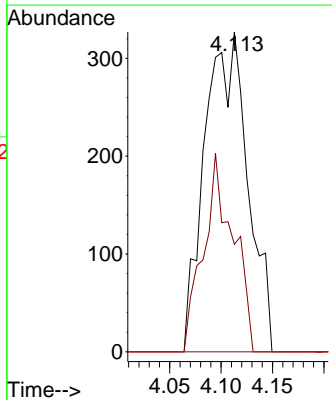
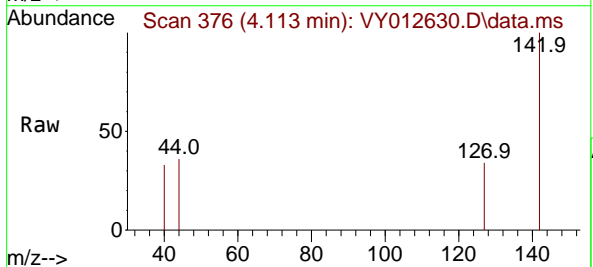
Instrument : MSVOA_Y
 ClientSampleId : SB-02-4.0-6.0

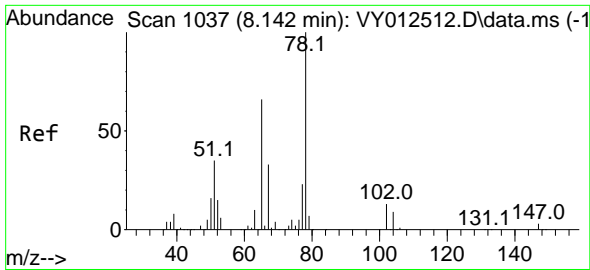
Tgt Ion:168 Resp: 5123
 Ion Ratio Lower Upper
 168 100
 99 47.3 40.8 61.2



#10
 Methyl Iodide
 Concen: 14.212 ug/l
 RT: 4.113 min Scan# 376
 Delta R.T. 0.019 min
 Lab File: VY012630.D
 Acq: 16 Feb 2023 12:05

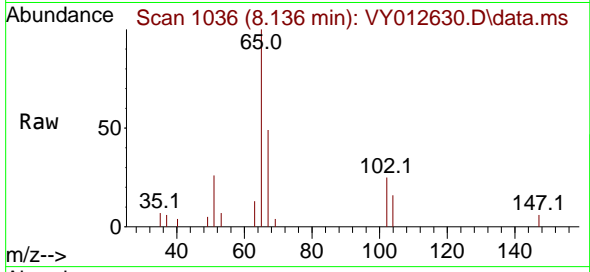
Tgt Ion:142 Resp: 951
 Ion Ratio Lower Upper
 142 100
 127 43.0 39.8 59.6
 141 0.0 11.6 17.4#



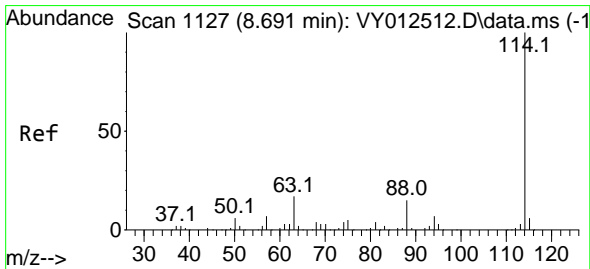
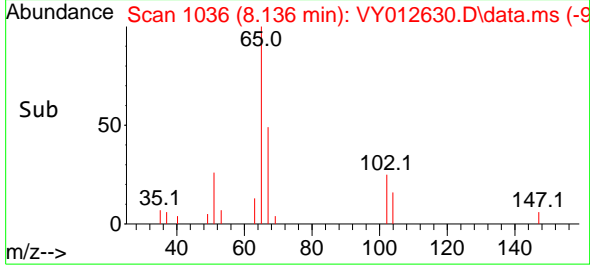
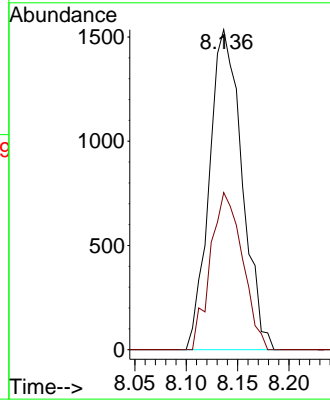


#33
 1,2-Dichloroethane-d4
 Concen: 52.237 ug/l
 RT: 8.136 min Scan# 1036
 Delta R.T. -0.006 min
 Lab File: VY012630.D
 Acq: 16 Feb 2023 12:05

Instrument : MSVOA_Y
 ClientSampleId : SB-02-4.0-6.0

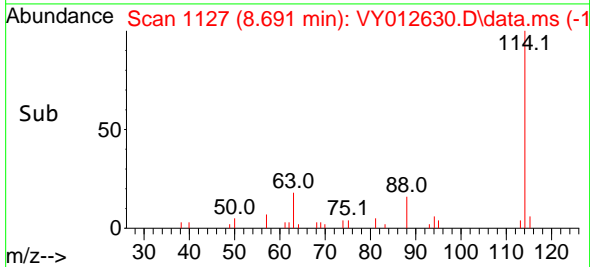
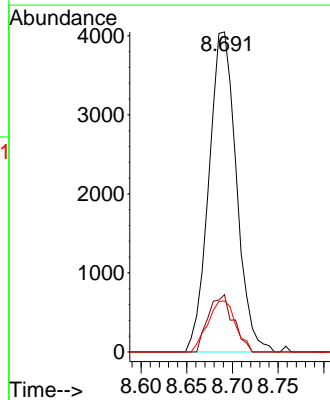
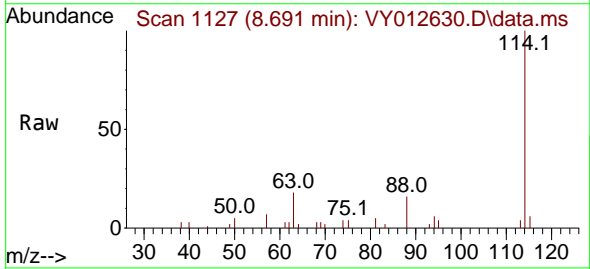


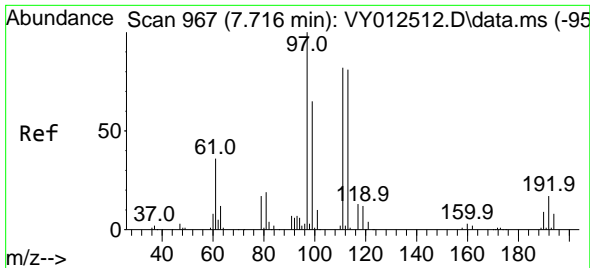
Tgt Ion: 65 Resp: 3403
 Ion Ratio Lower Upper
 65 100
 67 48.1 0.0 98.6



#34
 1,4-Difluorobenzene
 Concen: 50.000 ug/l
 RT: 8.691 min Scan# 1127
 Delta R.T. 0.000 min
 Lab File: VY012630.D
 Acq: 16 Feb 2023 12:05

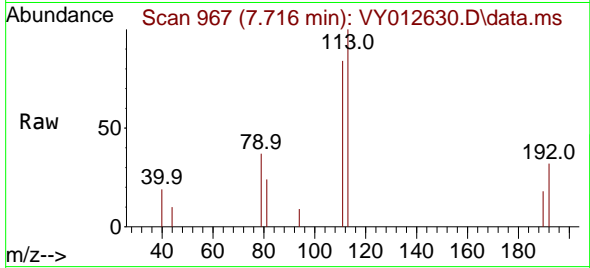
Tgt Ion: 114 Resp: 8477
 Ion Ratio Lower Upper
 114 100
 63 17.9 0.0 33.6
 88 16.0 0.0 29.8



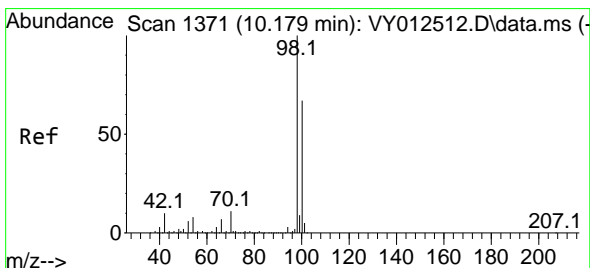
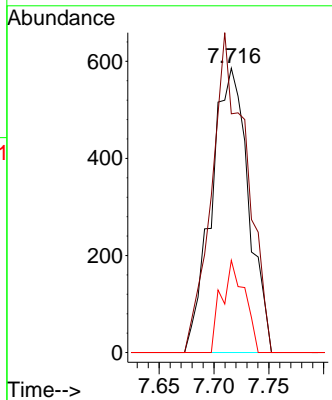
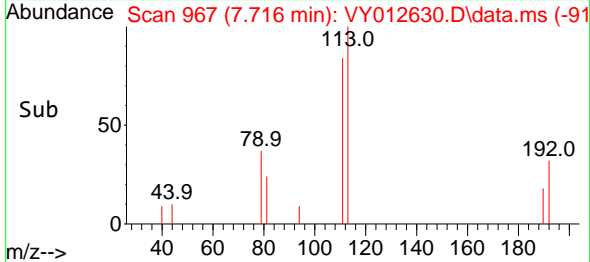


#35
 Dibromofluoromethane
 Concen: 22.338 ug/l
 RT: 7.716 min Scan# 90
 Delta R.T. 0.000 min
 Lab File: VY012630.D
 Acq: 16 Feb 2023 12:05

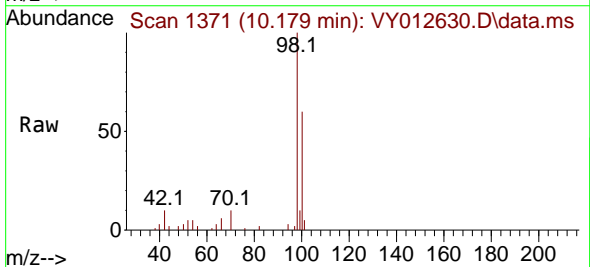
Instrument :
 MSVOA_Y
 ClientSampleId :
 SB-02-4.0-6.0



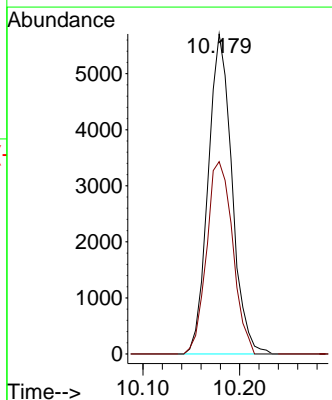
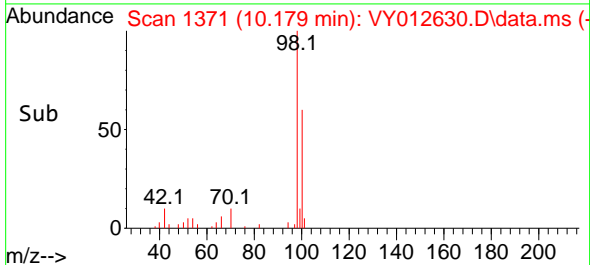
Tgt Ion:113 Resp: 1379
 Ion Ratio Lower Upper
 113 100
 111 105.2 81.9 122.9
 192 20.2 17.5 26.3

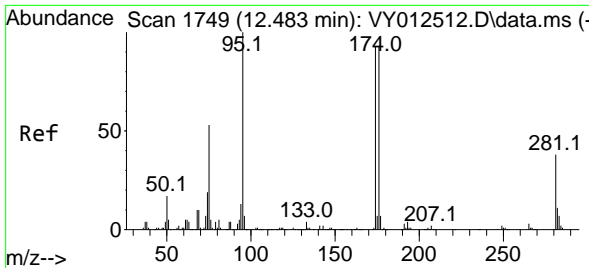


#50
 Toluene-d8
 Concen: 38.006 ug/l
 RT: 10.179 min Scan# 1371
 Delta R.T. 0.000 min
 Lab File: VY012630.D
 Acq: 16 Feb 2023 12:05



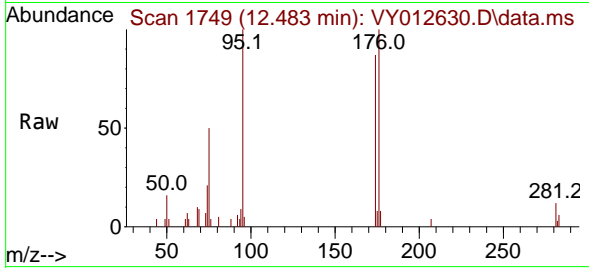
Tgt Ion: 98 Resp: 9766
 Ion Ratio Lower Upper
 98 100
 100 65.9 52.2 78.2





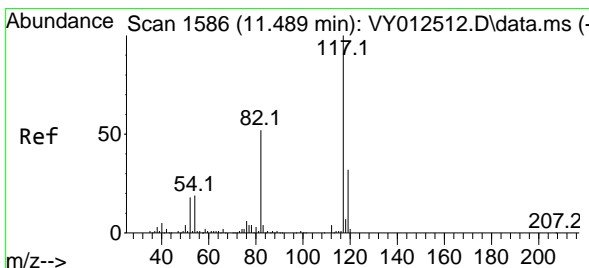
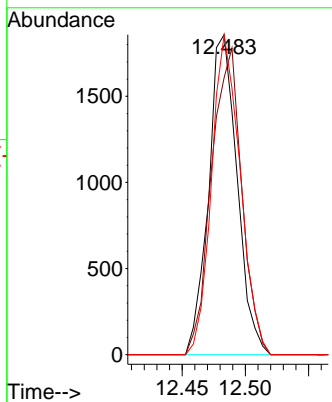
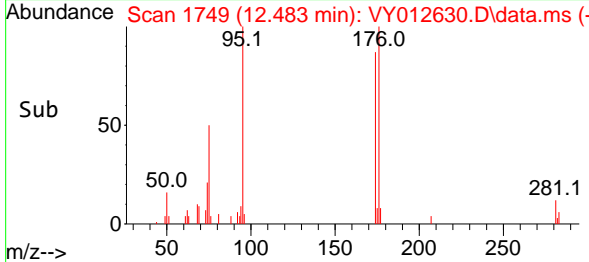
#62
 4-Bromofluorobenzene
 Concen: 32.512 ug/l
 RT: 12.483 min Scan# 1749
 Delta R.T. 0.000 min
 Lab File: VY012630.D
 Acq: 16 Feb 2023 12:05

Instrument : MSVOA_Y
 ClientSampleId : SB-02-4.0-6.0

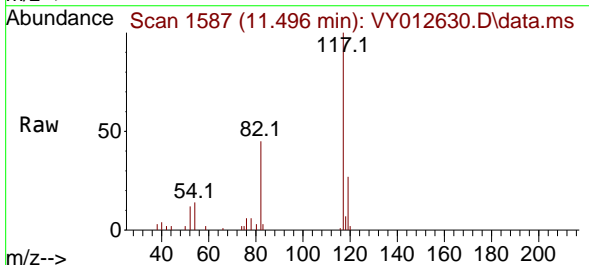


Tgt Ion: 95 Resp: 2914

Ion	Ratio	Lower	Upper
95	100		
174	101.8	0.0	188.0
176	100.5	0.0	183.6

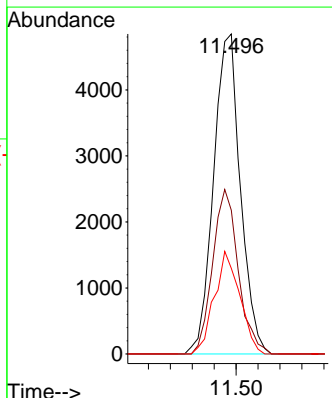
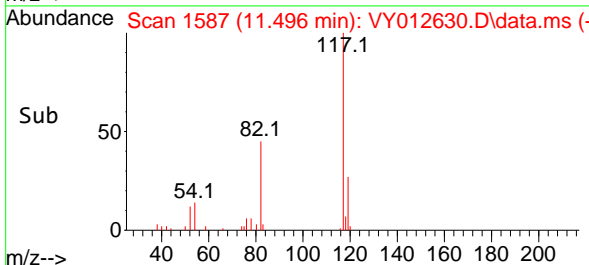


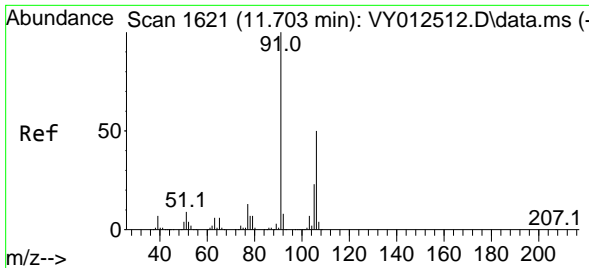
#63
 Chlorobenzene-d5
 Concen: 50.000 ug/l
 RT: 11.496 min Scan# 1587
 Delta R.T. 0.006 min
 Lab File: VY012630.D
 Acq: 16 Feb 2023 12:05



Tgt Ion: 117 Resp: 8240

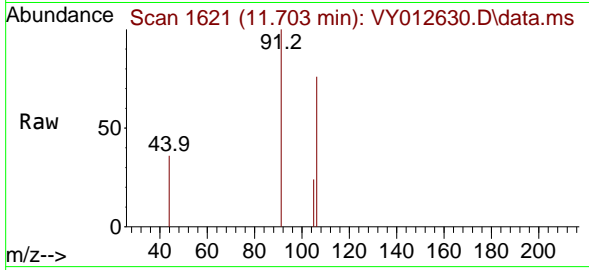
Ion	Ratio	Lower	Upper
117	100		
82	44.9	41.7	62.5
119	26.7	25.8	38.8



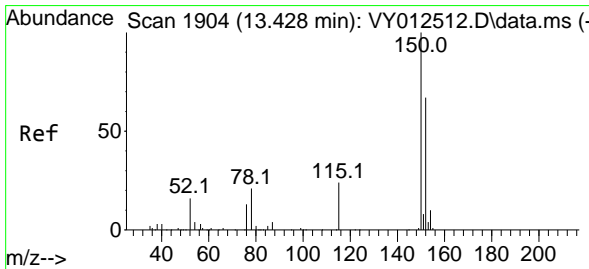
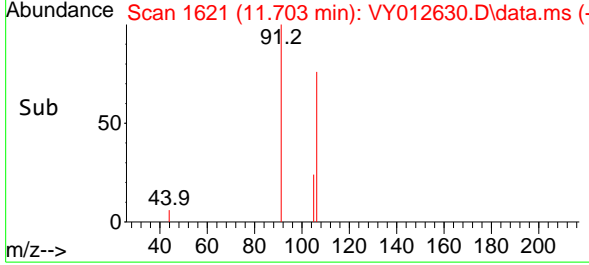
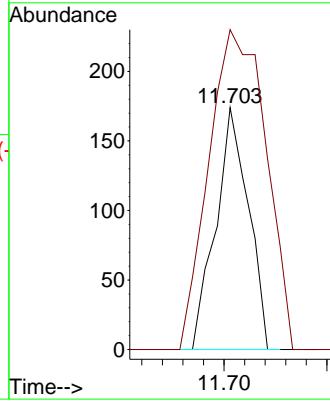


#68
 m/p-Xylenes
 Concen: 1.402 ug/l
 RT: 11.703 min Scan# 1
 Delta R.T. 0.000 min
 Lab File: VY012630.D
 Acq: 16 Feb 2023 12:05

Instrument :
 MSVOA_Y
 ClientSampleId :
 SB-02-4.0-6.0

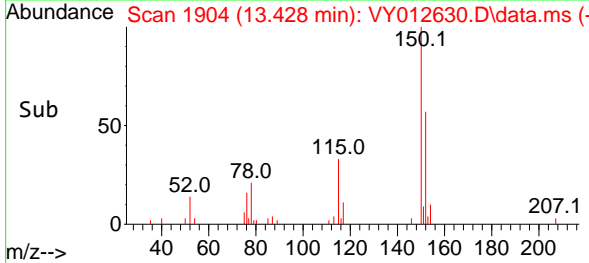
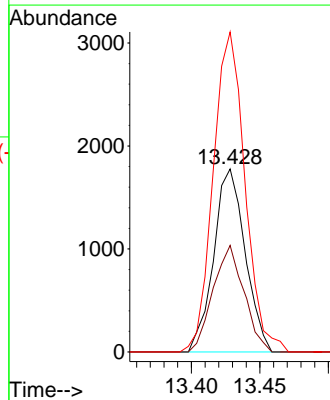
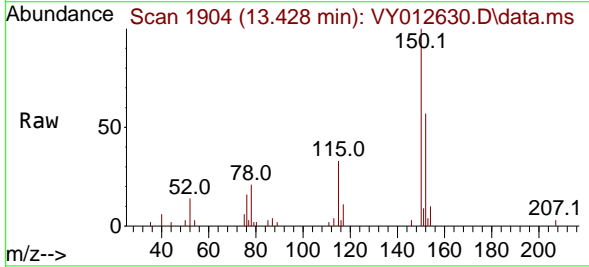


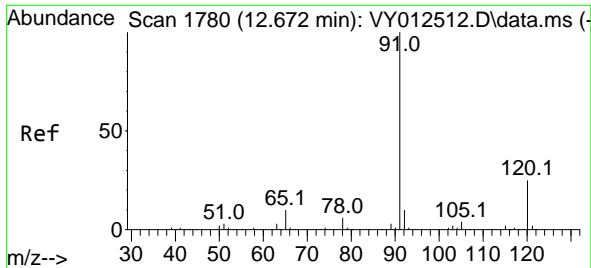
Tgt Ion:106 Resp: 192
 Ion Ratio Lower Upper
 106 100
 91 231.3 160.3 240.5



#72
 1,4-Dichlorobenzene-d4
 Concen: 50.000 ug/l
 RT: 13.428 min Scan# 1904
 Delta R.T. 0.000 min
 Lab File: VY012630.D
 Acq: 16 Feb 2023 12:05

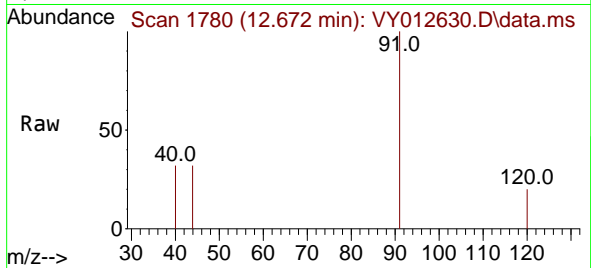
Tgt Ion:152 Resp: 2842
 Ion Ratio Lower Upper
 152 100
 115 57.2 28.1 84.3
 150 176.1 0.0 351.0





#78
 n-propylbenzene
 Concen: 1.738 ug/l
 RT: 12.672 min Scan# 11
 Delta R.T. 0.000 min
 Lab File: VY012630.D
 Acq: 16 Feb 2023 12:05

Instrument :
 MSVOA_Y
 ClientSampleId :
 SB-02-4.0-6.0



Tgt Ion: 91 Resp: 460
 Ion Ratio Lower Upper
 91 100
 120 10.4 12.4 37.4#

