

Data Path : Z:\voasrv\HPCHEM1\MSVOA_Y\Data\VY021722\
 Data File : VY007529.D
 Acq On : 17 Feb 2022 17:48
 Operator : SY/MD
 Sample : N1580-04
 Misc : 5.99g/5.0mL/MSVOA_Y/SOIL
 ALS Vial : 16 Sample Multiplier: 1

Instrument :
 MSVOA_Y
 ClientSampleId :
 D-4

Quant Time: Feb 18 07:42:08 2022
 Quant Method : Z:\voasrv\HPCHEM1\MSVOA_Y\methods\82Y021422S.M
 Quant Title : SW846 8260
 QLast Update : Tue Feb 15 09:34:50 2022
 Response via : Initial Calibration

Compound	R.T.	QIon	Response	Conc	Units	Dev(Min)

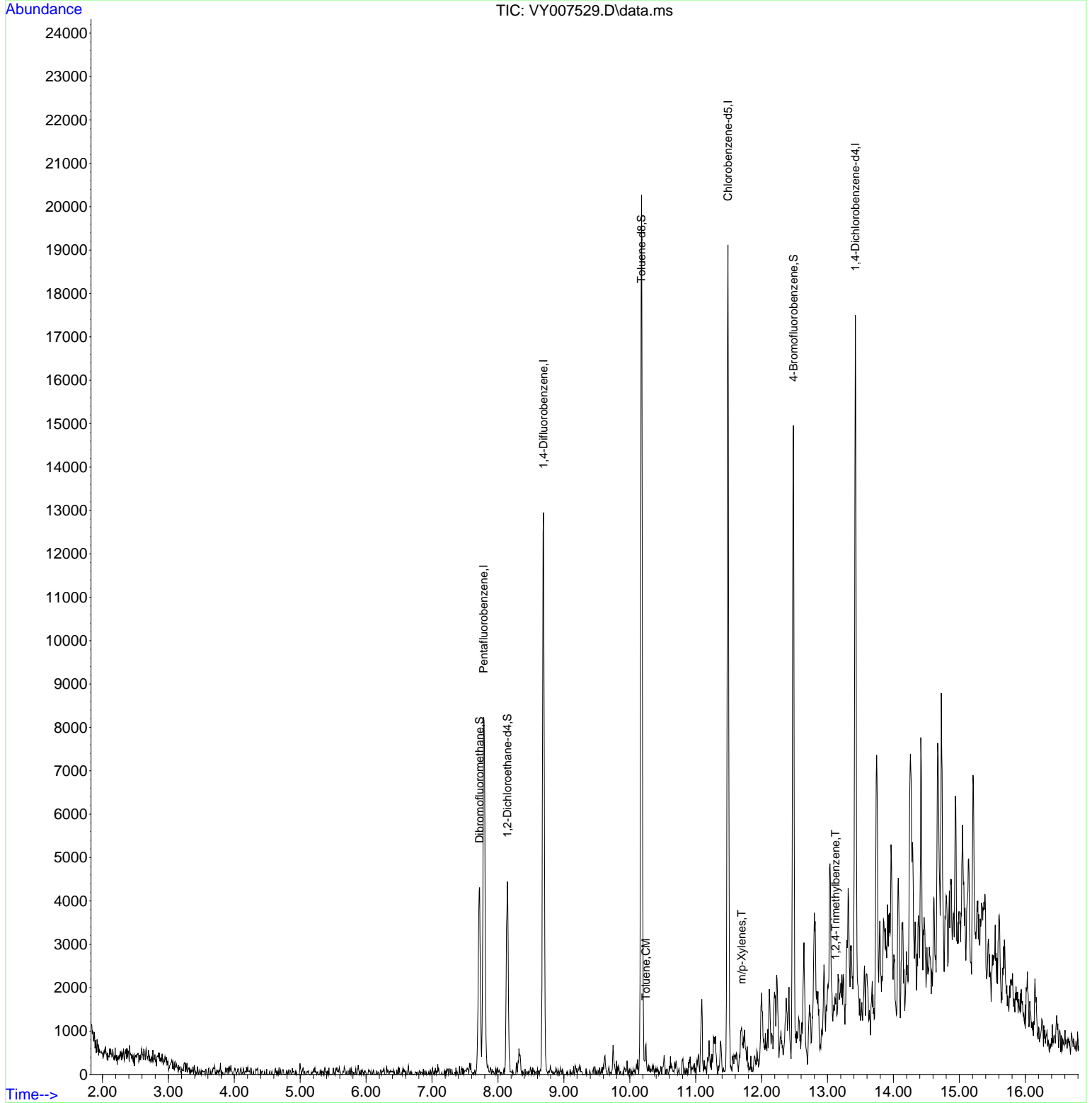
Internal Standards						
1) Pentafluorobenzene	7.783	168	6581	50.000	ug/l	-0.01
34) 1,4-Difluorobenzene	8.691	114	11164	50.000	ug/l	0.00
63) Chlorobenzene-d5	11.489	117	10303	50.000	ug/l	0.00
72) 1,4-Dichlorobenzene-d4	13.422	152	4258	50.000	ug/l	0.00
System Monitoring Compounds						
33) 1,2-Dichloroethane-d4	8.143	65	3417	47.029	ug/l	0.00
Spiked Amount	50.000	Range	50 - 163	Recovery	=	94.060%
35) Dibromofluoromethane	7.722	113	2939	41.745	ug/l	0.00
Spiked Amount	50.000	Range	54 - 147	Recovery	=	83.500%
50) Toluene-d8	10.179	98	13403	50.123	ug/l	0.00
Spiked Amount	50.000	Range	49 - 140	Recovery	=	100.240%
62) 4-Bromofluorobenzene	12.483	95	4760	52.499	ug/l	0.00
Spiked Amount	50.000	Range	25 - 144	Recovery	=	105.000%
Target Compounds						
						Qvalue
52) Toluene	10.246	92	233	1.159	ug/l	78
68) m/p-Xylenes	11.697	106	330	2.065	ug/l	84
84) 1,2,4-Trimethylbenzene	13.123	105	443	1.462	ug/l	96

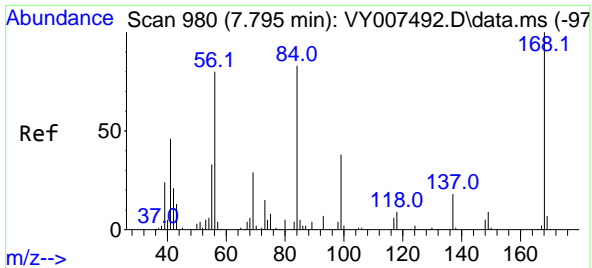
(#) = qualifier out of range (m) = manual integration (+) = signals summed

Data Path : Z:\voasrv\HPCHEM1\MSVOA_Y\Data\VY021722\
 Data File : VY007529.D
 Acq On : 17 Feb 2022 17:48
 Operator : SY/MD
 Sample : N1580-04
 Misc : 5.99g/5.0mL/MSVOA_Y/SOIL
 ALS Vial : 16 Sample Multiplier: 1

Instrument :
 MSVOA_Y
 ClientSampleId :
 D-4

Quant Time: Feb 18 07:42:08 2022
 Quant Method : Z:\voasrv\HPCHEM1\MSVOA_Y\methods\82Y021422S.M
 Quant Title : SW846 8260
 QLast Update : Tue Feb 15 09:34:50 2022
 Response via : Initial Calibration

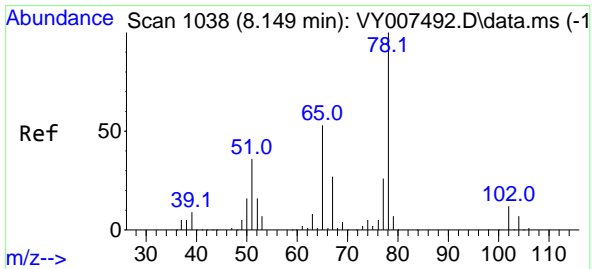
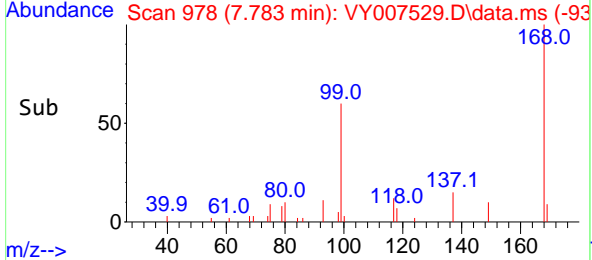
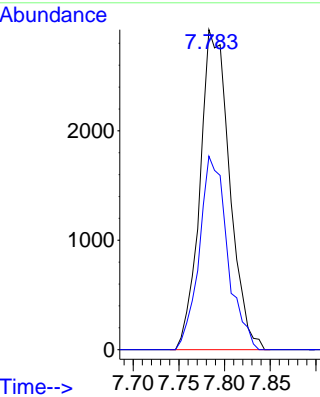
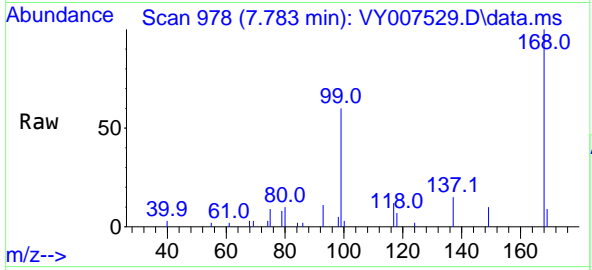




#1
 Pentafluorobenzene
 Concen: 50.000 ug/l
 RT: 7.783 min Scan# 91
 Delta R.T. -0.012 min
 Lab File: VY007529.D
 Acq: 17 Feb 2022 17:48

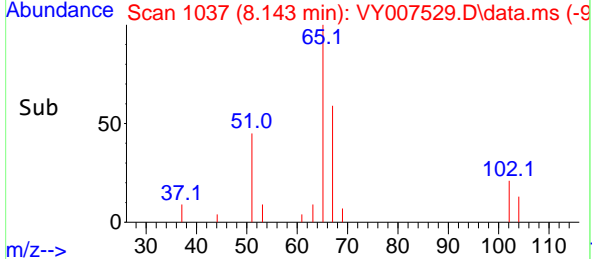
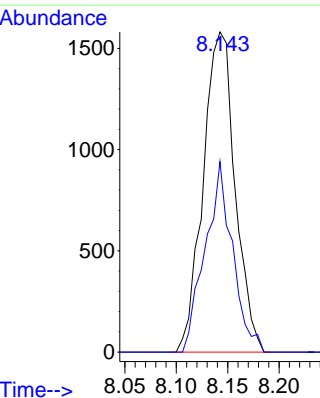
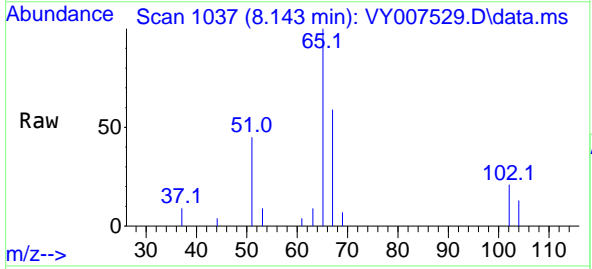
Instrument : MSVOA_Y
 ClientSampleId : D-4

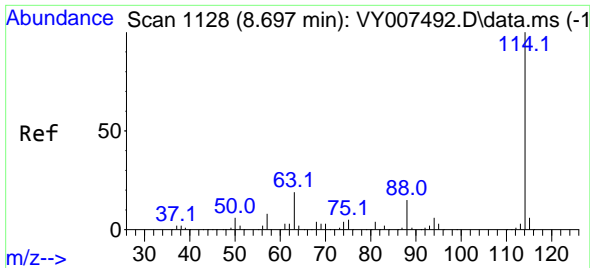
Tgt Ion:168 Resp: 6581
 Ion Ratio Lower Upper
 168 100
 99 60.4 46.9 70.3



#33
 1,2-Dichloroethane-d4
 Concen: 47.029 ug/l
 RT: 8.143 min Scan# 1037
 Delta R.T. -0.000 min
 Lab File: VY007529.D
 Acq: 17 Feb 2022 17:48

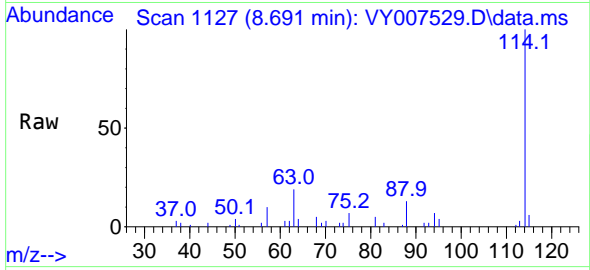
Tgt Ion: 65 Resp: 3417
 Ion Ratio Lower Upper
 65 100
 67 50.8 0.0 99.4





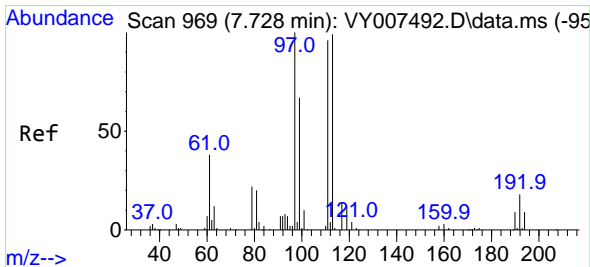
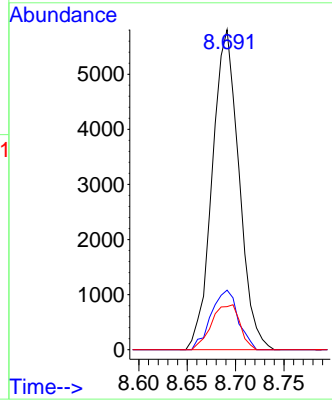
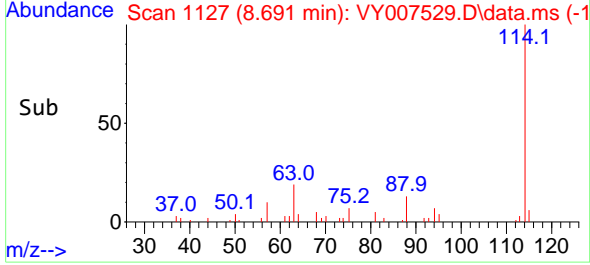
#34
 1,4-Difluorobenzene
 Concen: 50.000 ug/l
 RT: 8.691 min Scan# 1127
 Delta R.T. -0.000 min
 Lab File: VY007529.D
 Acq: 17 Feb 2022 17:48

Instrument : MSVOA_Y
 ClientSampleId : D-4

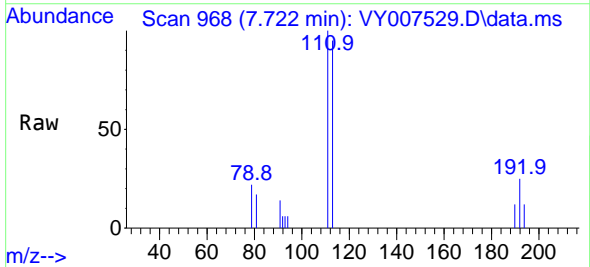


Tgt Ion:114 Resp: 11164

Ion	Ratio	Lower	Upper
114	100		
63	18.6	0.0	43.2
88	13.5	0.0	31.8

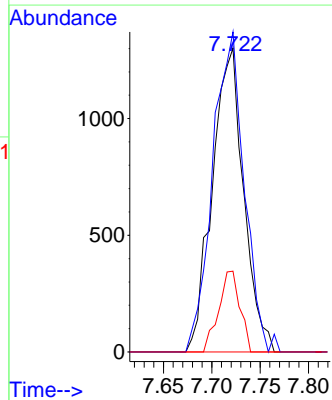
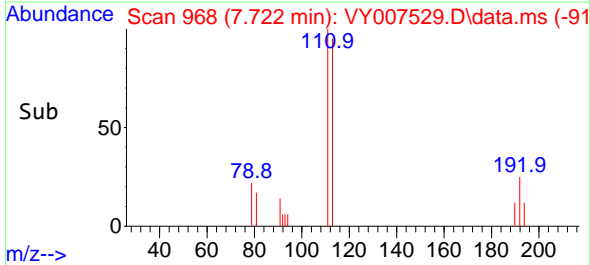


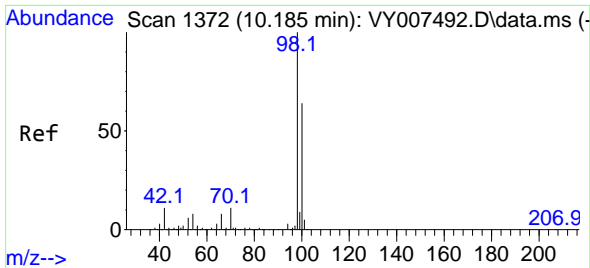
#35
 Dibromofluoromethane
 Concen: 41.745 ug/l
 RT: 7.722 min Scan# 968
 Delta R.T. -0.000 min
 Lab File: VY007529.D
 Acq: 17 Feb 2022 17:48



Tgt Ion:113 Resp: 2939

Ion	Ratio	Lower	Upper
113	100		
111	106.0	82.6	124.0
192	18.0	17.6	26.4

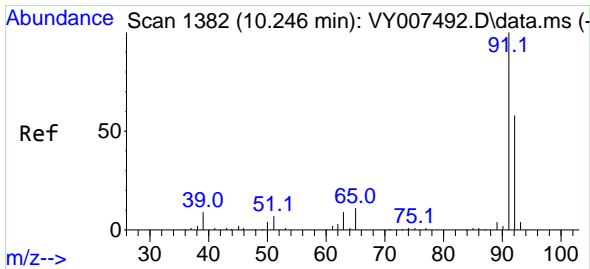
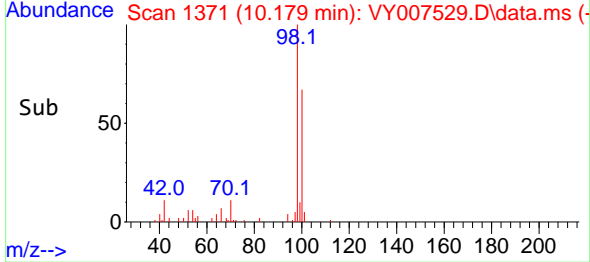
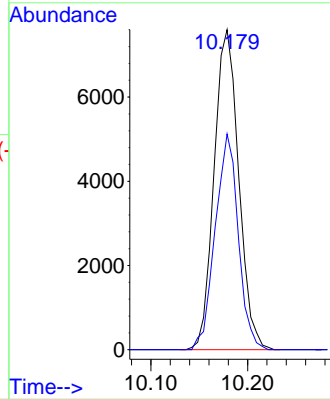
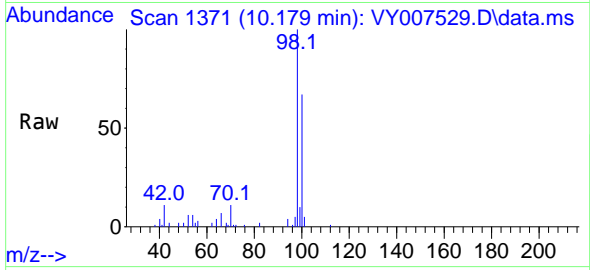




#50
 Toluene-d8
 Concen: 50.123 ug/l
 RT: 10.179 min Scan# 11
 Delta R.T. -0.006 min
 Lab File: VY007529.D
 Acq: 17 Feb 2022 17:48

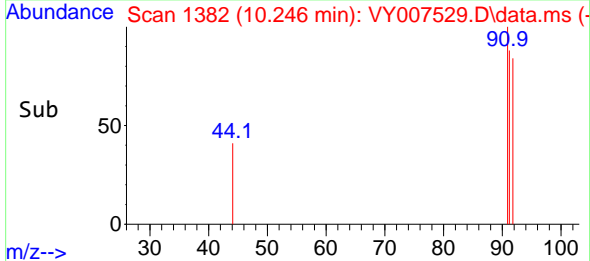
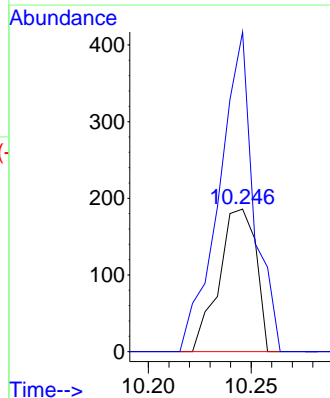
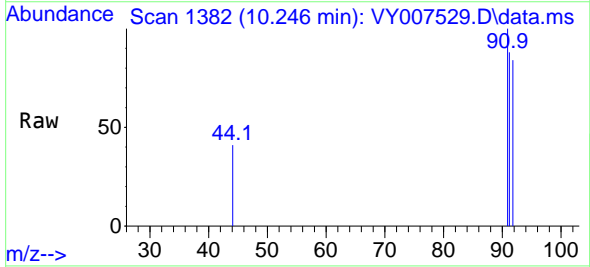
Instrument :
 MSVOA_Y
 ClientSampleId :
 D-4

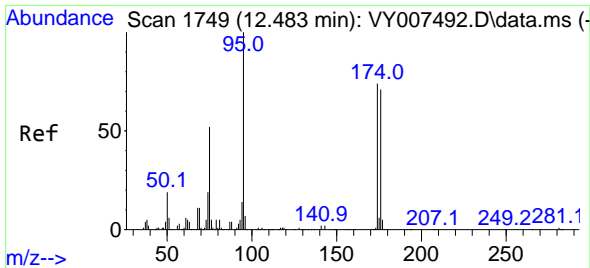
Tgt Ion: 98 Resp: 13403
 Ion Ratio Lower Upper
 98 100
 100 63.2 50.2 75.2



#52
 Toluene
 Concen: 1.159 ug/l
 RT: 10.246 min Scan# 1382
 Delta R.T. -0.000 min
 Lab File: VY007529.D
 Acq: 17 Feb 2022 17:48

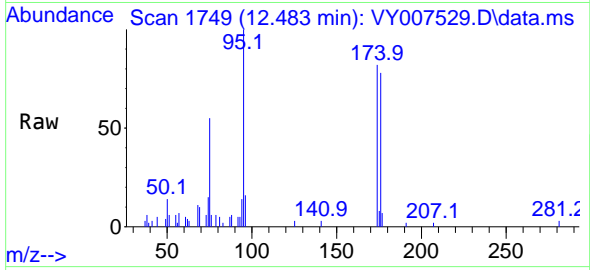
Tgt Ion: 92 Resp: 233
 Ion Ratio Lower Upper
 92 100
 91 209.9 142.6 213.8



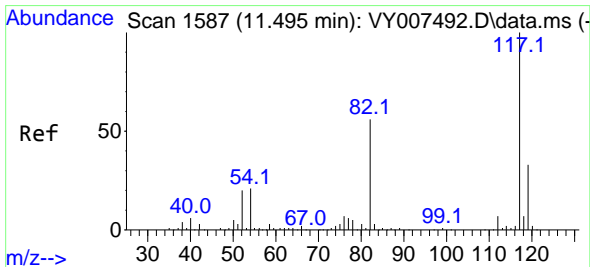
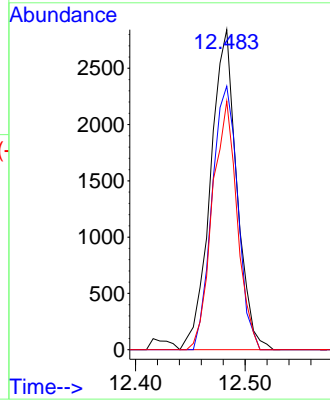
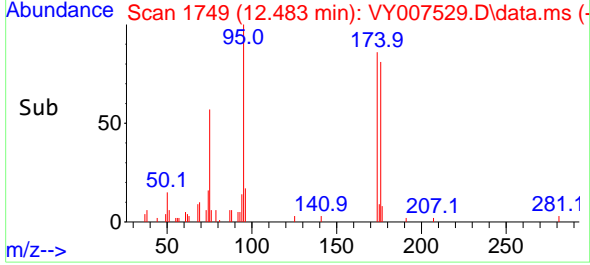


#62
 4-Bromofluorobenzene
 Concen: 52.499 ug/l
 RT: 12.483 min Scan# 11
 Delta R.T. 0.000 min
 Lab File: VY007529.D
 Acq: 17 Feb 2022 17:48

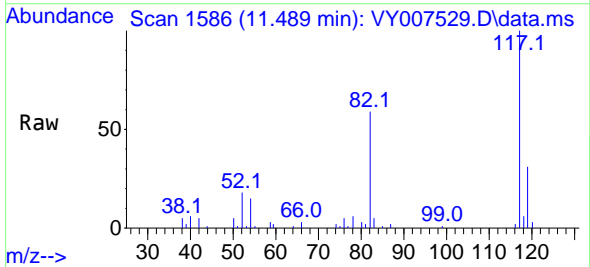
Instrument :
 MSVOA_Y
 ClientSampleId :
 D-4



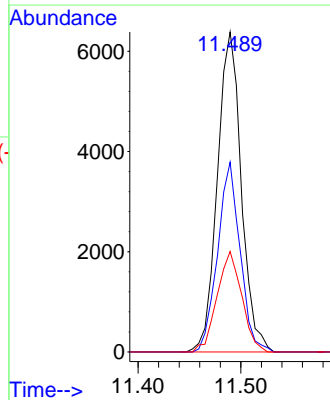
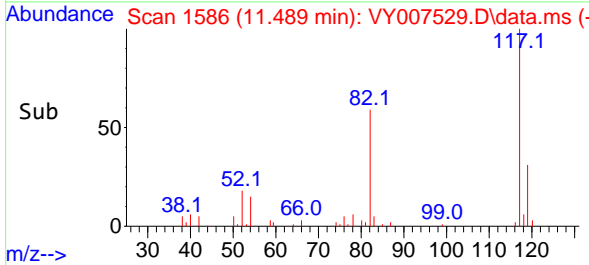
Tgt Ion: 95 Resp: 4760
 Ion Ratio Lower Upper
 95 100
 174 80.1 0.0 177.0
 176 73.0 0.0 175.8

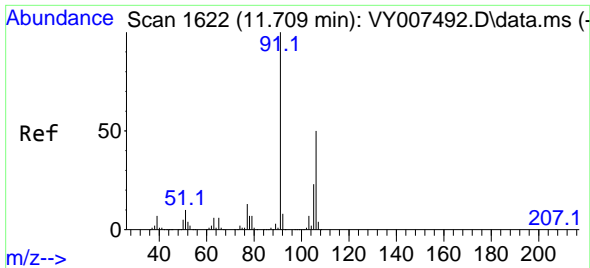


#63
 Chlorobenzene-d5
 Concen: 50.000 ug/l
 RT: 11.489 min Scan# 1586
 Delta R.T. -0.000 min
 Lab File: VY007529.D
 Acq: 17 Feb 2022 17:48



Tgt Ion: 117 Resp: 10303
 Ion Ratio Lower Upper
 117 100
 82 59.3 43.0 64.4
 119 31.4 25.4 38.0

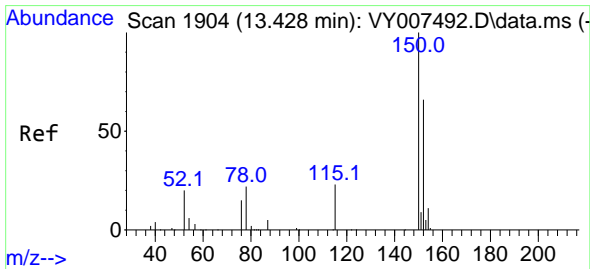
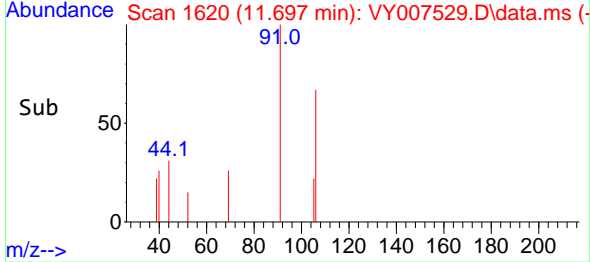
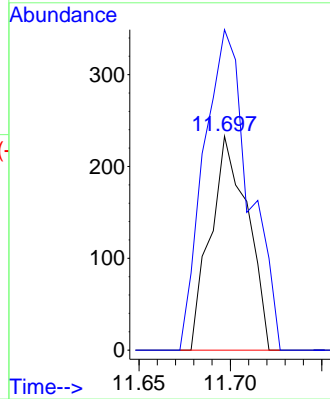
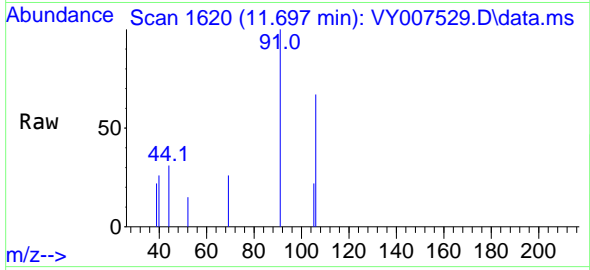




#68
 m/p-Xylenes
 Concen: 2.065 ug/l
 RT: 11.697 min Scan# 11
 Delta R.T. -0.006 min
 Lab File: VY007529.D
 Acq: 17 Feb 2022 17:48

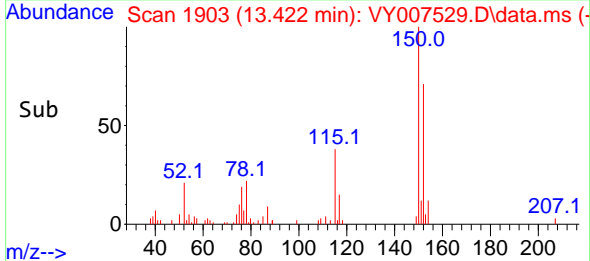
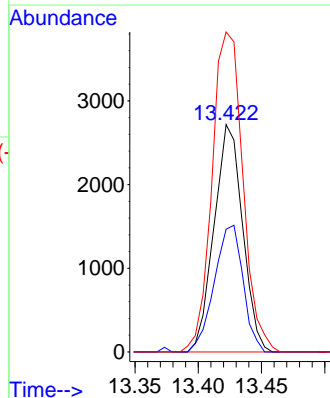
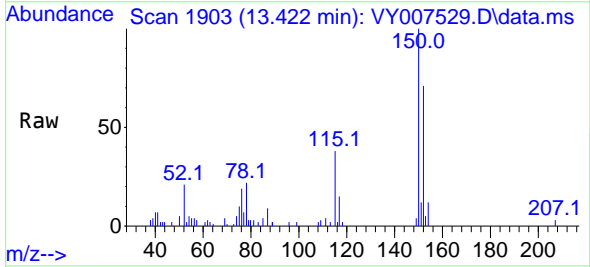
Instrument :
 MSVOA_Y
 ClientSampleId :
 D-4

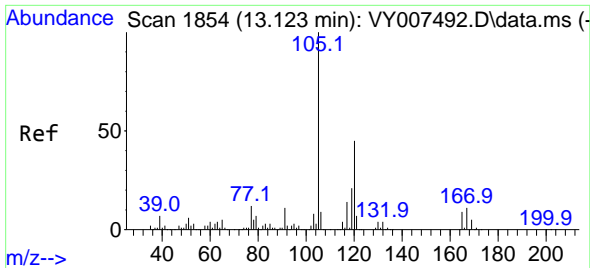
Tgt Ion:106 Resp: 330
 Ion Ratio Lower Upper
 106 100
 91 183.0 166.6 249.8



#72
 1,4-Dichlorobenzene-d4
 Concen: 50.000 ug/l
 RT: 13.422 min Scan# 1903
 Delta R.T. 0.000 min
 Lab File: VY007529.D
 Acq: 17 Feb 2022 17:48

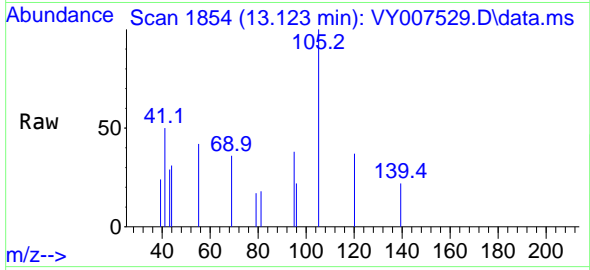
Tgt Ion:152 Resp: 4258
 Ion Ratio Lower Upper
 152 100
 115 56.2 28.2 84.7
 150 152.2 0.0 347.6





#84
 1,2,4-Trimethylbenzene
 Concen: 1.462 ug/l
 RT: 13.123 min Scan# 11
 Delta R.T. 0.006 min
 Lab File: VY007529.D
 Acq: 17 Feb 2022 17:48

Instrument :
 MSVOA_Y
 ClientSampleId :
 D-4



Tgt Ion:105 Resp: 443
 Ion Ratio Lower Upper
 105 100
 120 42.2 22.3 66.9

