

Data Path : Z:\voasrv\HPCHEM1\MSVOA\_Y\Data\VY021925\  
 Data File : VY021240.D  
 Acq On : 19 Feb 2025 16:35  
 Operator : SY/MD  
 Sample : Q1384-01RE  
 Misc : 5.03g/5.0mL/MSVOA\_Y/SOIL/B  
 ALS Vial : 7 Sample Multiplier: 1

**Instrument :**  
 MSVOA\_Y  
**ClientSampleId :**  
 OR-03-021823025RE

Quant Time: Feb 20 00:19:55 2025  
 Quant Method : Z:\voasrv\HPCHEM1\MSVOA\_Y\methods\82Y020325S.M  
 Quant Title : SW846 8260  
 QLast Update : Mon Feb 03 13:08:38 2025  
 Response via : Initial Calibration

Compound	R.T.	QIon	Response	Conc	Units	Dev(Min)
Internal Standards						
1) Pentafluorobenzene	7.720	168	22918	50.000	ug/l	0.00
34) 1,4-Difluorobenzene	8.622	114	32813	50.000	ug/l	0.00
63) Chlorobenzene-d5	11.420	117	23022	50.000	ug/l	0.00
72) 1,4-Dichlorobenzene-d4	13.353	152	4894	50.000	ug/l	0.00
System Monitoring Compounds						
33) 1,2-Dichloroethane-d4	8.067	65	9531	40.590	ug/l	0.00
Spiked Amount	50.000	Range	50 - 163	Recovery	=	81.180%
35) Dibromofluoromethane	7.640	113	10653	50.659	ug/l	0.00
Spiked Amount	50.000	Range	54 - 147	Recovery	=	101.320%
50) Toluene-d8	10.109	98	35904	44.848	ug/l	0.00
Spiked Amount	50.000	Range	58 - 134	Recovery	=	89.700%
62) 4-Bromofluorobenzene	12.414	95	7038	26.909	ug/l	0.00
Spiked Amount	50.000	Range	30 - 143	Recovery	=	53.820%

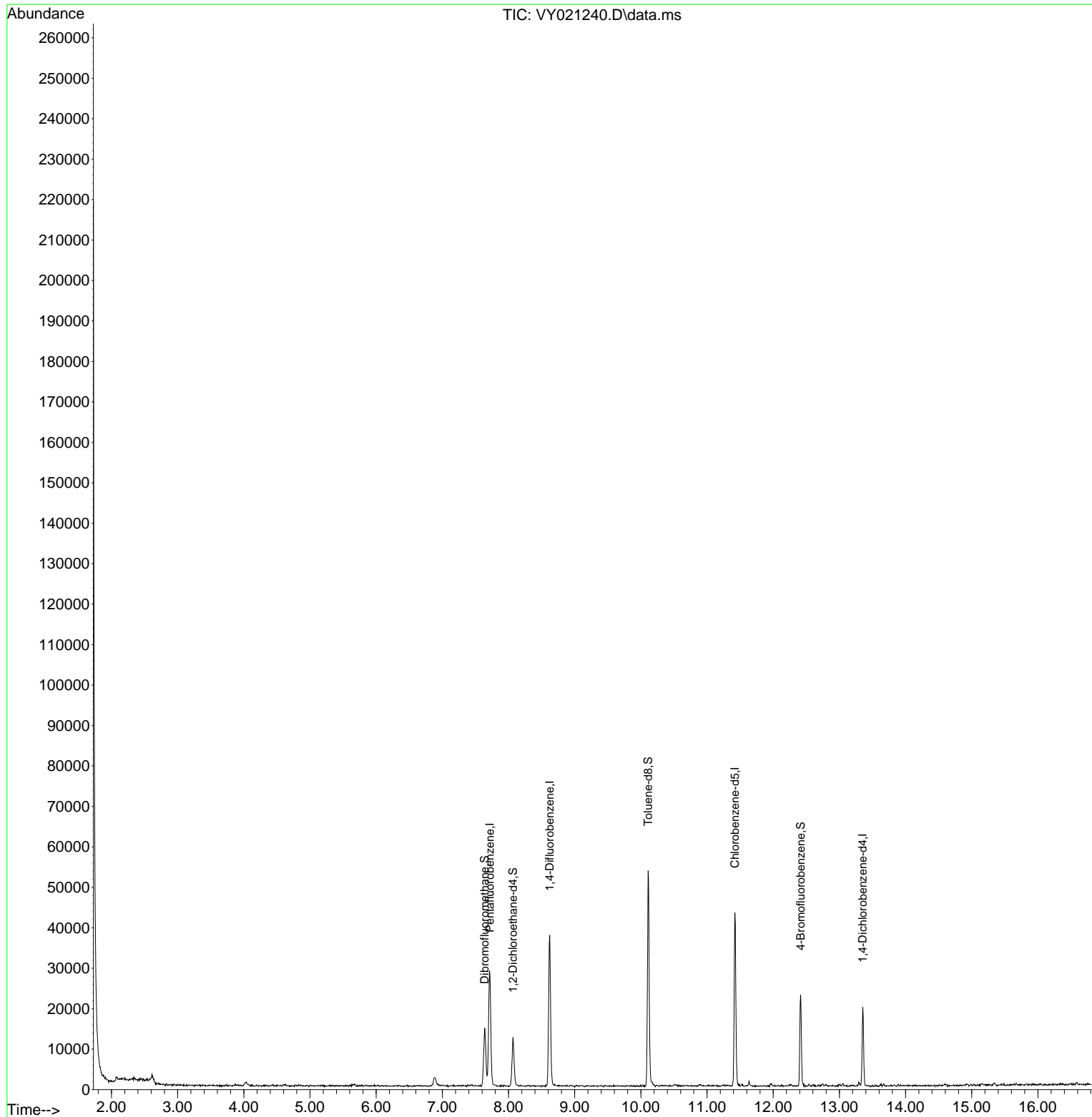
Target Compounds Qvalue

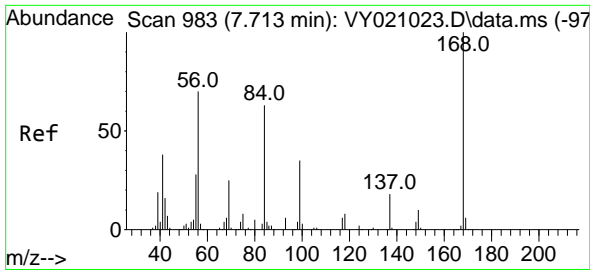
(#) = qualifier out of range (m) = manual integration (+) = signals summed

Data Path : Z:\voasrv\HPCHEM1\MSVOA\_Y\Data\VY021925\  
 Data File : VY021240.D  
 Acq On : 19 Feb 2025 16:35  
 Operator : SY/MD  
 Sample : Q1384-01RE  
 Misc : 5.03g/5.0mL/MSVOA\_Y/SOIL/B  
 ALS Vial : 7 Sample Multiplier: 1

Instrument :  
 MSVOA\_Y  
 ClientSampleId :  
 OR-03-021823025RE

Quant Time: Feb 20 00:19:55 2025  
 Quant Method : Z:\voasrv\HPCHEM1\MSVOA\_Y\methods\82Y020325S.M  
 Quant Title : SW846 8260  
 QLast Update : Mon Feb 03 13:08:38 2025  
 Response via : Initial Calibration

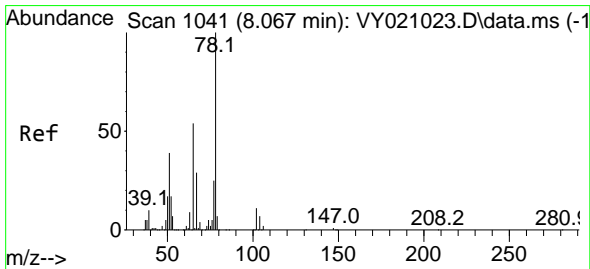
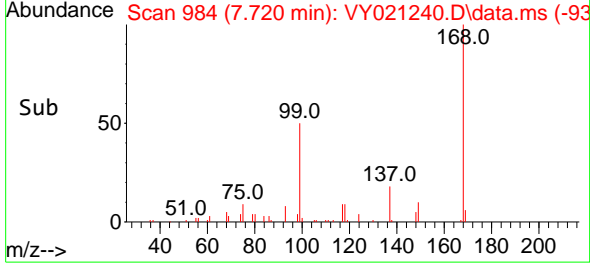
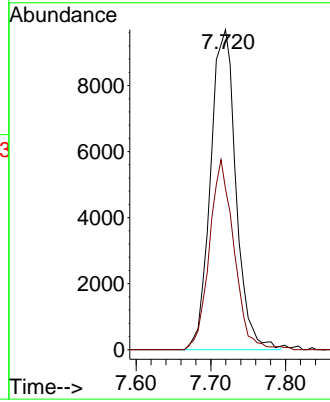
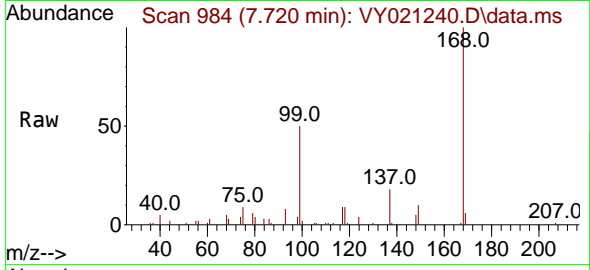




#1  
 Pentafluorobenzene  
 Concen: 50.000 ug/l  
 RT: 7.720 min Scan# 91  
 Delta R.T. 0.007 min  
 Lab File: VY021240.D  
 Acq: 19 Feb 2025 16:35

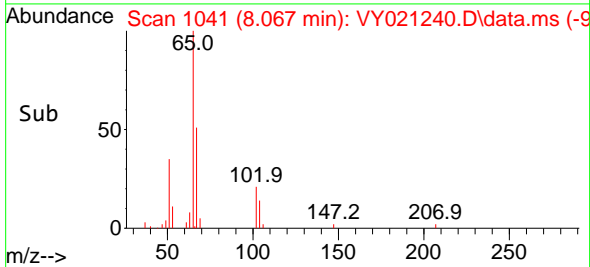
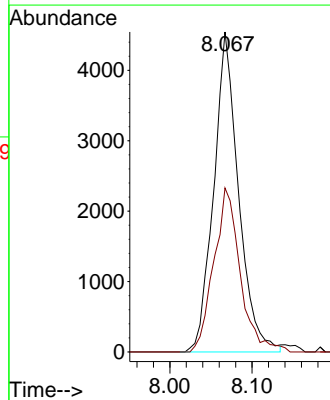
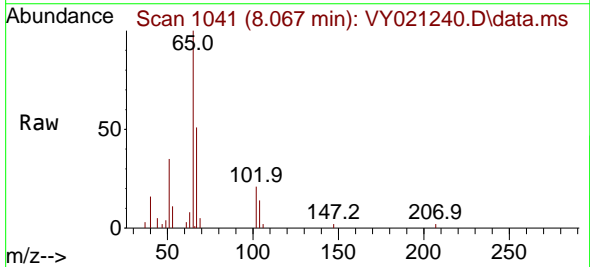
Instrument :  
 MSVOA\_Y  
 ClientSampleId :  
 OR-03-021823025RE

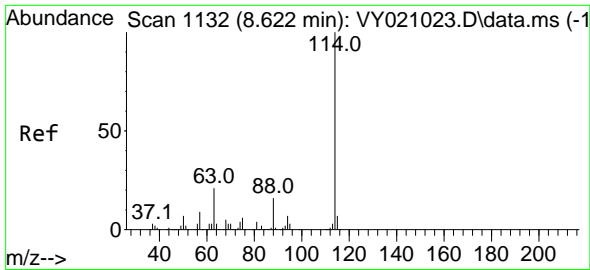
Tgt Ion:168 Resp: 22918  
 Ion Ratio Lower Upper  
 168 100  
 99 50.3 44.2 66.4



#33  
 1,2-Dichloroethane-d4  
 Concen: 40.590 ug/l  
 RT: 8.067 min Scan# 1041  
 Delta R.T. 0.000 min  
 Lab File: VY021240.D  
 Acq: 19 Feb 2025 16:35

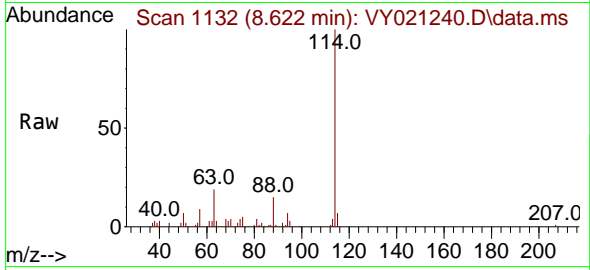
Tgt Ion: 65 Resp: 9531  
 Ion Ratio Lower Upper  
 65 100  
 67 54.5 0.0 109.0





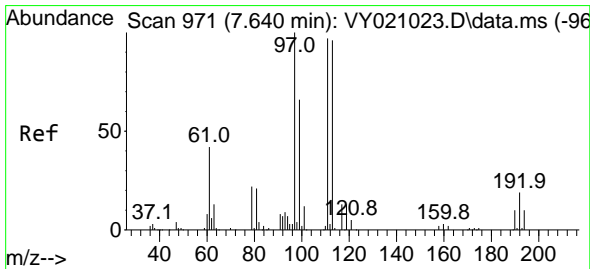
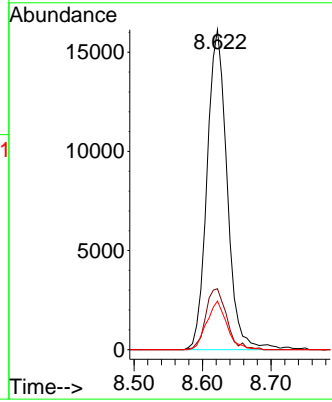
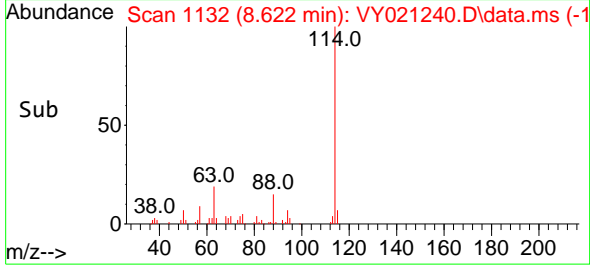
#34  
 1,4-Difluorobenzene  
 Concen: 50.000 ug/l  
 RT: 8.622 min Scan# 1132  
 Delta R.T. 0.000 min  
 Lab File: VY021240.D  
 Acq: 19 Feb 2025 16:35

Instrument : MSVOA\_Y  
 ClientSampleId : OR-03-021823025RE

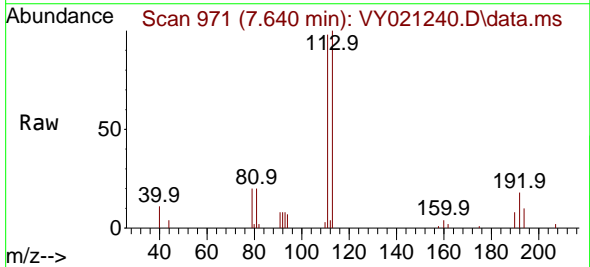


Tgt Ion:114 Resp: 32813

Ion	Ratio	Lower	Upper
114	100		
63	19.0	0.0	37.4
88	15.2	0.0	29.0

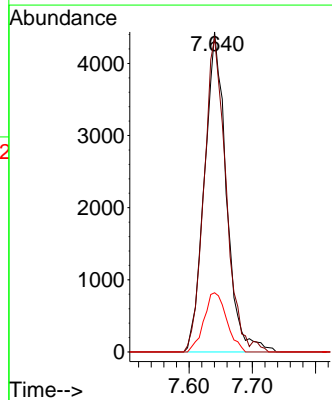
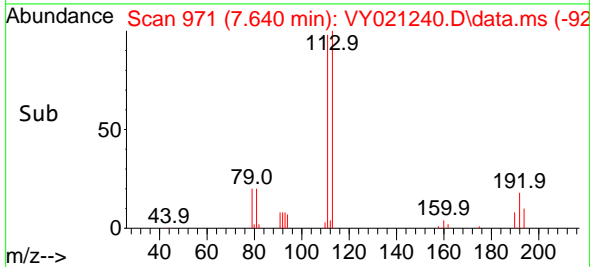


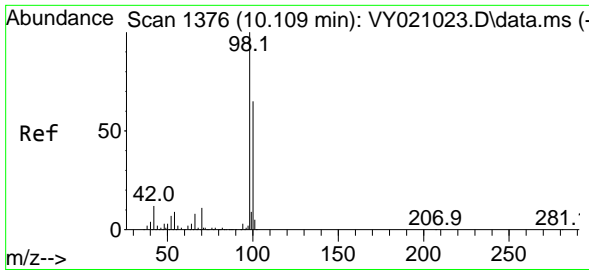
#35  
 Dibromofluoromethane  
 Concen: 50.659 ug/l  
 RT: 7.640 min Scan# 971  
 Delta R.T. 0.000 min  
 Lab File: VY021240.D  
 Acq: 19 Feb 2025 16:35



Tgt Ion:113 Resp: 10653

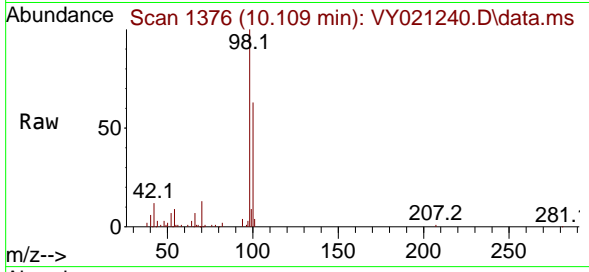
Ion	Ratio	Lower	Upper
113	100		
111	98.9	83.8	125.6
192	19.2	14.5	21.7



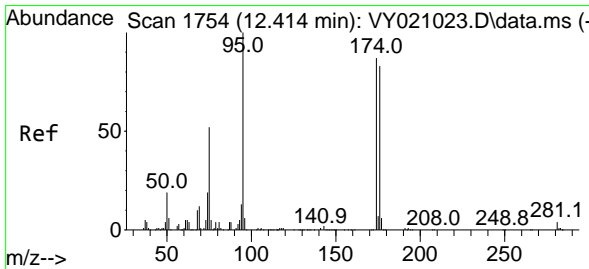
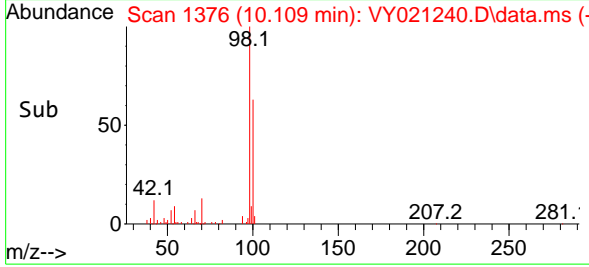
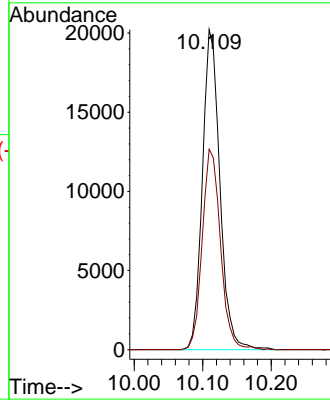


#50  
 Toluene-d8  
 Concen: 44.848 ug/l  
 RT: 10.109 min Scan# 11  
 Delta R.T. 0.000 min  
 Lab File: VY021240.D  
 Acq: 19 Feb 2025 16:35

Instrument :  
 MSVOA\_Y  
 ClientSampleId :  
 OR-03-021823025RE

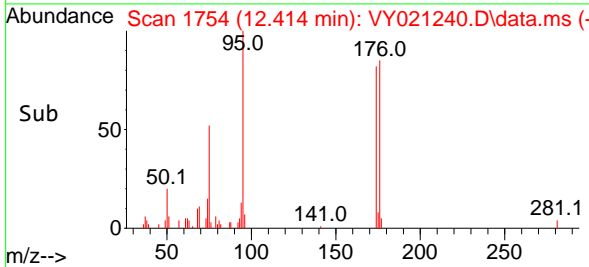
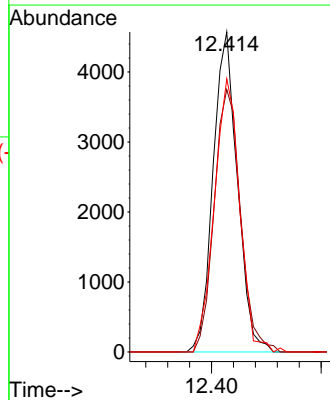
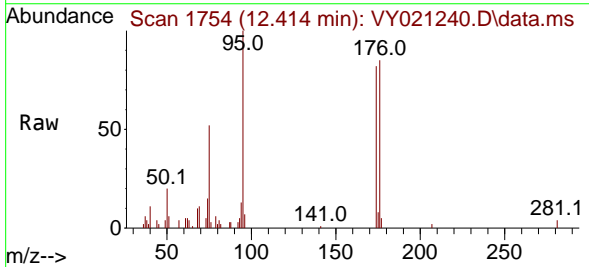


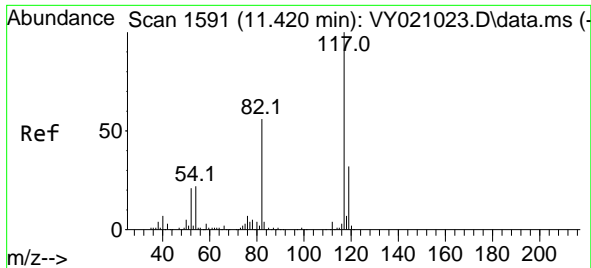
Tgt Ion: 98 Resp: 35904  
 Ion Ratio Lower Upper  
 98 100  
 100 65.5 52.3 78.5



#62  
 4-Bromofluorobenzene  
 Concen: 26.909 ug/l  
 RT: 12.414 min Scan# 1754  
 Delta R.T. 0.000 min  
 Lab File: VY021240.D  
 Acq: 19 Feb 2025 16:35

Tgt Ion: 95 Resp: 7038  
 Ion Ratio Lower Upper  
 95 100  
 174 88.8 0.0 160.0  
 176 89.1 0.0 151.8

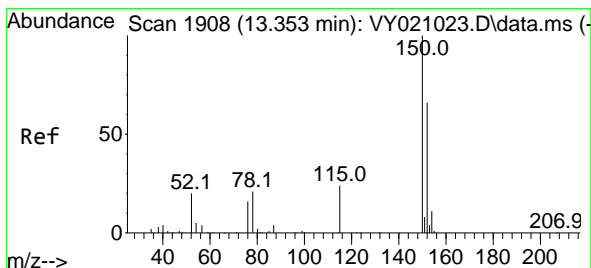
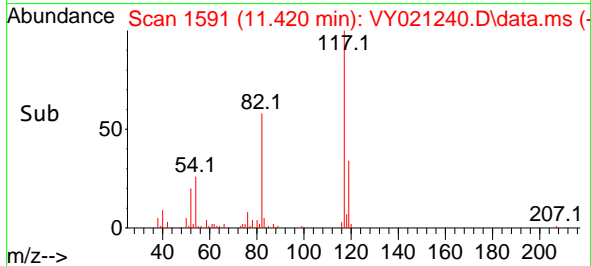
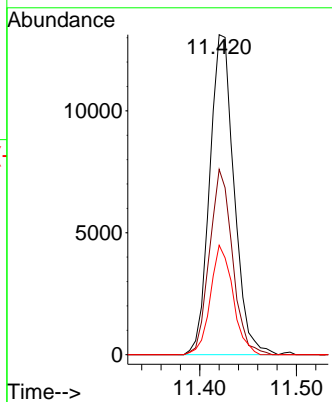
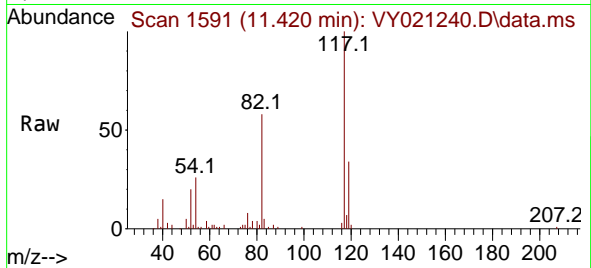




#63  
 Chlorobenzene-d5  
 Concen: 50.000 ug/l  
 RT: 11.420 min Scan# 1170  
 Delta R.T. -0.000 min  
 Lab File: VY021240.D  
 Acq: 19 Feb 2025 16:35

Instrument : MSVOA\_Y  
 ClientSampleId : OR-03-021823025RE

Tgt Ion	Resp	Lower	Upper
117	100		
82	57.9	43.8	65.8
119	34.2	26.5	39.7



#72  
 1,4-Dichlorobenzene-d4  
 Concen: 50.000 ug/l  
 RT: 13.353 min Scan# 1908  
 Delta R.T. 0.000 min  
 Lab File: VY021240.D  
 Acq: 19 Feb 2025 16:35

Tgt Ion	Resp	Lower	Upper
152	100		
115	61.7	30.0	90.0
150	159.6	0.0	344.6

