

Data Path : Z:\voasrv\HPCHEM1\MSVOA_Y\Data\VY022222\
 Data File : VY007579.D
 Acq On : 22 Feb 2022 13:45
 Operator : SY/MD
 Sample : N1600-05
 Misc : 4.57g/5.0mL/MSVOA_Y/SOIL
 ALS Vial : 10 Sample Multiplier: 1

Instrument :
 MSVOA_Y
 ClientSampleId :
 C0AA6

Quant Time: Feb 22 14:37:06 2022
 Quant Method : Z:\voasrv\HPCHEM1\MSVOA_Y\methods\82Y022122S.M
 Quant Title : SW846 8260
 QLast Update : Mon Feb 21 15:25:36 2022
 Response via : Initial Calibration

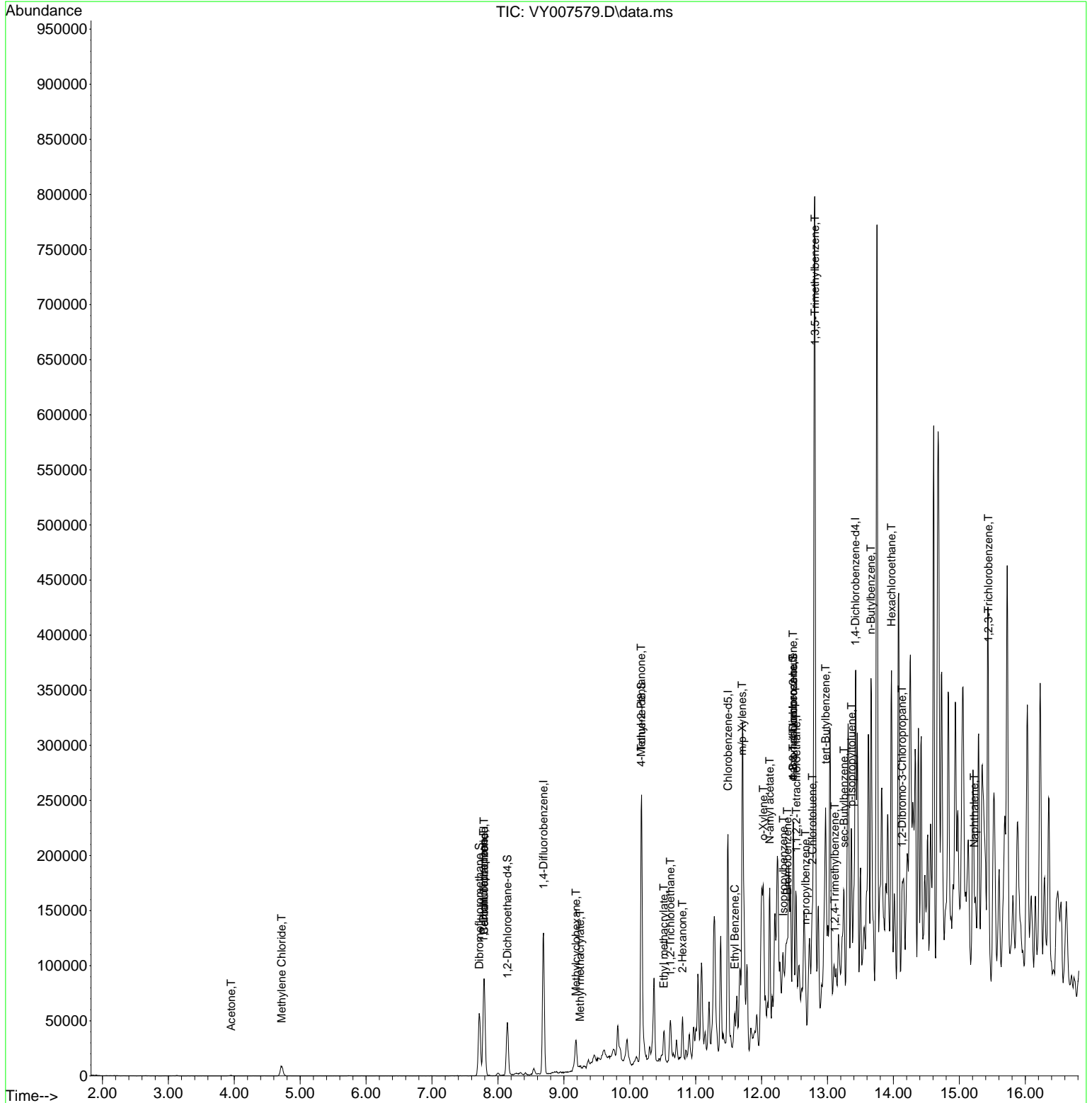
| Compound | R.T. | QIon | Response | Conc Units | Dev(Min) |
|-------------------------------|--------|----------------|----------|----------------|----------|
| ----- | | | | | |
| Internal Standards | | | | | |
| 1) Pentafluorobenzene | 7.789 | 168 | 63913 | 50.000 ug/l | 0.00 |
| 34) 1,4-Difluorobenzene | 8.691 | 114 | 105994 | 50.000 ug/l | 0.00 |
| 63) Chlorobenzene-d5 | 11.489 | 117 | 100147 | 50.000 ug/l | 0.00 |
| 72) 1,4-Dichlorobenzene-d4 | 13.422 | 152 | 44871 | 50.000 ug/l | 0.00 |
| System Monitoring Compounds | | | | | |
| 33) 1,2-Dichloroethane-d4 | 8.142 | 65 | 37759 | 57.042 ug/l | 0.00 |
| Spiked Amount | 50.000 | Range 50 - 163 | Recovery | = 114.080% | |
| 35) Dibromofluoromethane | 7.716 | 113 | 35352 | 52.600 ug/l | 0.00 |
| Spiked Amount | 50.000 | Range 54 - 147 | Recovery | = 105.200% | |
| 50) Toluene-d8 | 10.179 | 98 | 129594 | 55.612 ug/l | 0.00 |
| Spiked Amount | 50.000 | Range 49 - 140 | Recovery | = 111.220% | |
| 62) 4-Bromofluorobenzene | 12.477 | 95 | 46277 | 54.845 ug/l | 0.00 |
| Spiked Amount | 50.000 | Range 25 - 144 | Recovery | = 109.700% | |
| Target Compounds | | | | | |
| | | | | | Qvalue |
| 16) Acetone | 3.954 | 43 | 948 | 6.070 ug/l | 96 |
| 20) Methylene Chloride | 4.716 | 84 | 6425 | 6.458 ug/l # | 77 |
| 31) Cyclohexane | 7.777 | 56 | 2102 | Below Cal # | 62 |
| 36) 1,1-Dichloropropene | 7.783 | 75 | 4777 | 4.864 ug/l # | 55 |
| 38) Carbon Tetrachloride | 7.789 | 117 | 7245 | 5.478 ug/l # | 14 |
| 39) Methylcyclohexane | 9.185 | 83 | 12023 | 9.694 ug/l # | 79 |
| 48) Methyl methacrylate | 9.246 | 41 | 641 | 1.791 ug/l # | 28 |
| 51) 4-Methyl-2-Pentanone | 10.172 | 43 | 1657 | 4.044 ug/l # | 45 |
| 55) 1,1,2-Trichloroethane | 10.618 | 97 | 16580 | 27.915 ug/l # | 19 |
| 56) Ethyl methacrylate | 10.514 | 69 | 2219 | 3.039 ug/l # | 1 |
| 59) 2-Hexanone | 10.800 | 43 | 11369 | 38.496 ug/l # | 33 |
| 67) Ethyl Benzene | 11.593 | 91 | 14091 | 3.787 ug/l | 93 |
| 68) m/p-Xylenes | 11.703 | 106 | 1472 | 1.039 ug/l # | 67 |
| 69) o-Xylene | 12.026 | 106 | 24571 | 18.189 ug/l | 99 |
| 73) Isopropylbenzene | 12.331 | 105 | 16847 | 4.743 ug/l | 100 |
| 74) N-amyl acetate | 12.123 | 43 | 22995 | 33.381 ug/l # | 68 |
| 75) 1,1,2,2-Tetrachloroethane | 12.526 | 83 | 2191 | 3.564 ug/l # | 40 |
| 76) 1,2,3-Trichloropropane | 12.477 | 75 | 28068 | 53.439 ug/l # | 100 |
| 77) Bromobenzene | 12.392 | 156 | 3523 | 4.226 ug/l # | 1 |
| 78) n-propylbenzene | 12.666 | 91 | 23576 | 5.694 ug/l | 93 |
| 79) 2-Chlorotoluene | 12.770 | 91 | 4407 | 1.901 ug/l # | 44 |
| 80) 1,3,5-Trimethylbenzene | 12.812 | 105 | 83506 | 28.046 ug/l | 98 |
| 81) trans-1,4-Dichloro-2-b... | 12.477 | 75 | 28068 | 130.965 ug/l # | 9 |
| 83) tert-Butylbenzene | 12.971 | 119 | 2673 | 1.008 ug/l # | 1 |
| 84) 1,2,4-Trimethylbenzene | 13.111 | 105 | 4835 | 1.652 ug/l | 85 |
| 85) sec-Butylbenzene | 13.251 | 105 | 36327 | 9.490 ug/l | 86 |
| 86) p-Isopropyltoluene | 13.367 | 119 | 21034 | 6.525 ug/l | 95 |
| 89) n-Butylbenzene | 13.660 | 91 | 22929 | 7.788 ug/l # | 1 |
| 90) Hexachloroethane | 13.971 | 117 | 12074 | 18.915 ug/l # | 6 |
| 92) 1,2-Dibromo-3-Chloropr... | 14.129 | 75 | 132 | 1.152 ug/l | 76 |
| 95) Naphthalene | 15.226 | 128 | 3748 | 1.934 ug/l # | 69 |
| 96) 1,2,3-Trichlorobenzene | 15.440 | 180 | 1224 | 1.485 ug/l # | 1 |

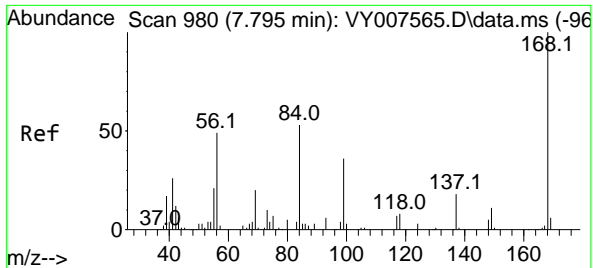
(#) = qualifier out of range (m) = manual integration (+) = signals summed

Data Path : Z:\voasrv\HPCHEM1\MSVOA_Y\Data\VY022222\
 Data File : VY007579.D
 Acq On : 22 Feb 2022 13:45
 Operator : SY/MD
 Sample : N1600-05
 Misc : 4.57g/5.0mL/MSVOA_Y/SOIL
 ALS Vial : 10 Sample Multiplier: 1

Instrument :
 MSVOA_Y
 ClientSampleId :
 C0AA6

Quant Time: Feb 22 14:37:06 2022
 Quant Method : Z:\voasrv\HPCHEM1\MSVOA_Y\methods\82Y022122S.M
 Quant Title : SW846 8260
 QLast Update : Mon Feb 21 15:25:36 2022
 Response via : Initial Calibration

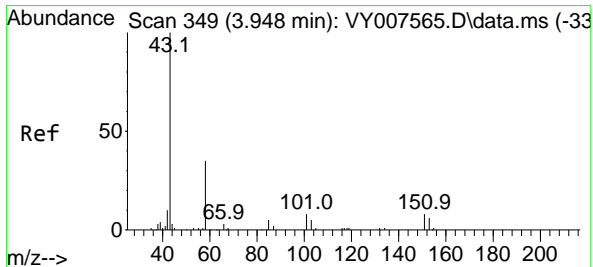
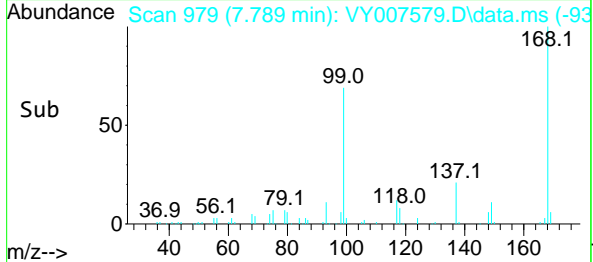
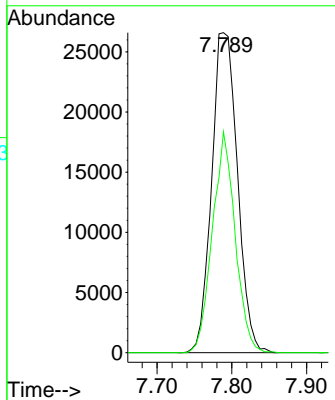
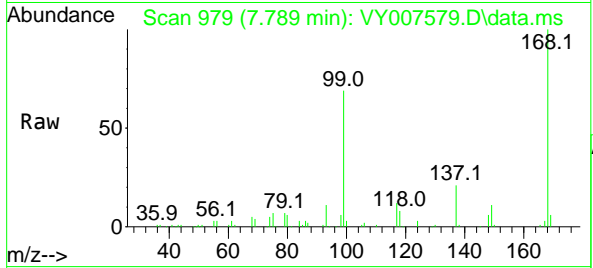




#1
 Pentafluorobenzene
 Concen: 50.000 ug/l
 RT: 7.789 min Scan# 91
 Delta R.T. -0.006 min
 Lab File: VY007579.D
 Acq: 22 Feb 2022 13:45

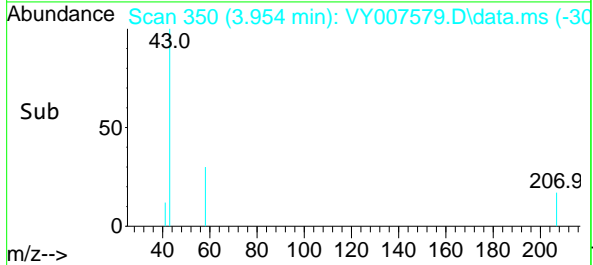
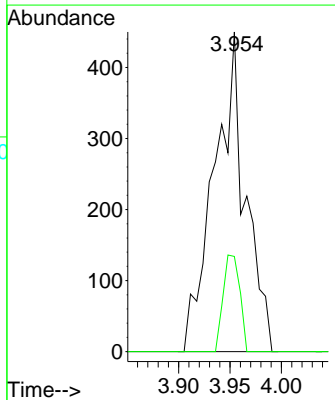
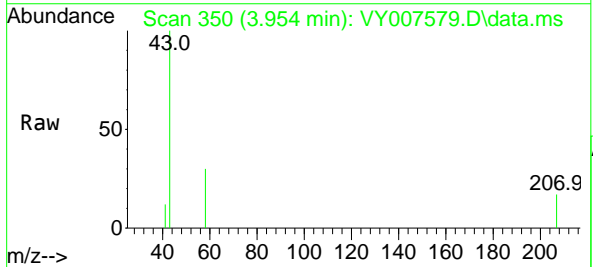
Instrument :
 MSVOA_Y
 ClientSampleId :
 C0AA6

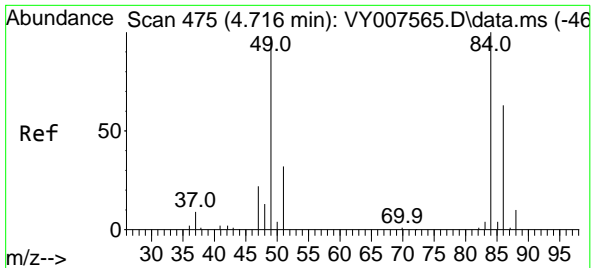
Tgt Ion:168 Resp: 63913
 Ion Ratio Lower Upper
 168 100
 99 69.0 46.9 70.3



#16
 Acetone
 Concen: 6.070 ug/l
 RT: 3.954 min Scan# 350
 Delta R.T. 0.006 min
 Lab File: VY007579.D
 Acq: 22 Feb 2022 13:45

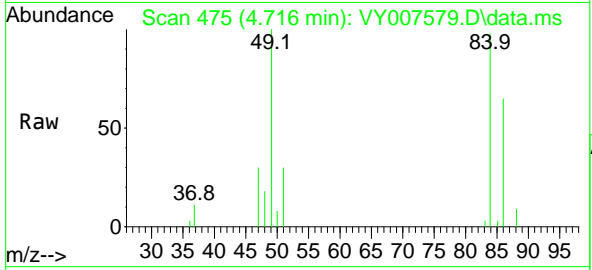
Tgt Ion: 43 Resp: 948
 Ion Ratio Lower Upper
 43 100
 58 29.8 22.0 33.0





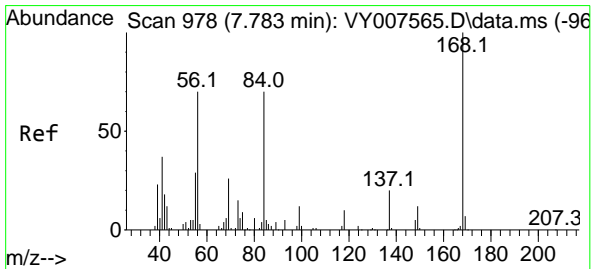
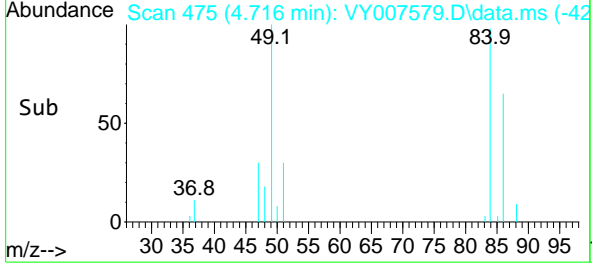
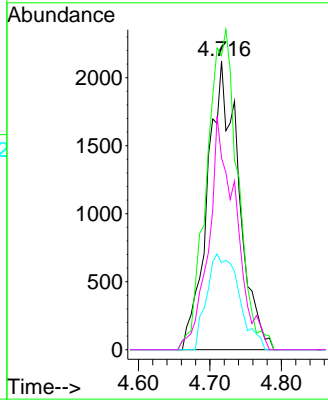
#20
 Methylene Chloride
 Concen: 6.458 ug/l
 RT: 4.716 min Scan# 41
 Delta R.T. 0.000 min
 Lab File: VY007579.D
 Acq: 22 Feb 2022 13:45

Instrument :
 MSVOA_Y
 ClientSampleId :
 C0AA6



Tgt Ion: 84 Resp: 6425

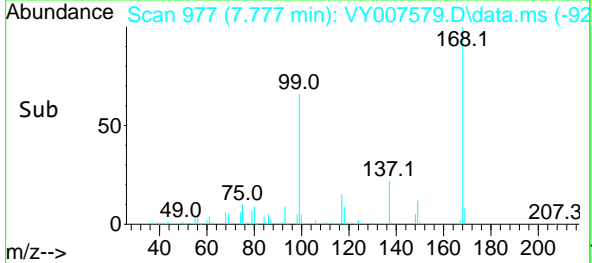
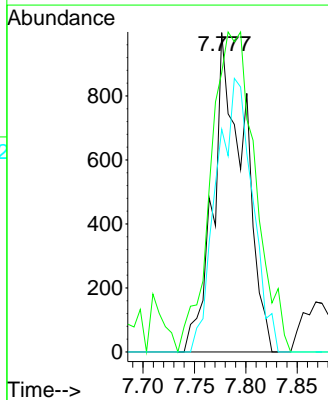
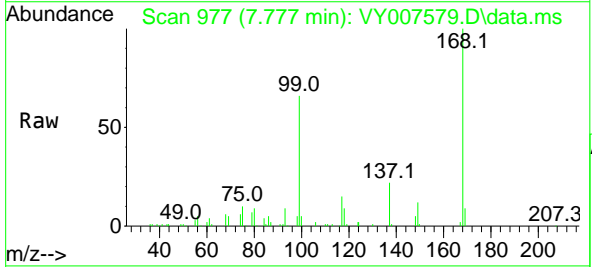
| Ion | Ratio | Lower | Upper |
|-----|-------|-------|--------|
| 84 | 100 | | |
| 49 | 101.9 | 114.4 | 171.6# |
| 51 | 30.2 | 35.3 | 52.9# |
| 86 | 66.4 | 53.7 | 80.5 |

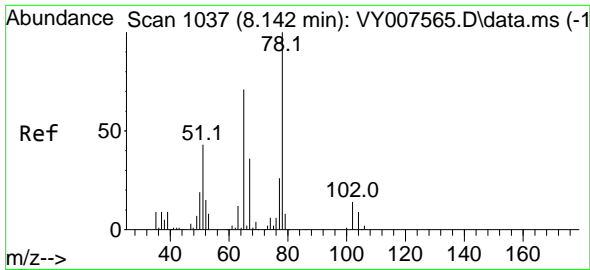


#31
 Cyclohexane
 Concen: Below Cal
 RT: 7.777 min Scan# 977
 Delta R.T. -0.006 min
 Lab File: VY007579.D
 Acq: 22 Feb 2022 13:45

Tgt Ion: 56 Resp: 2102

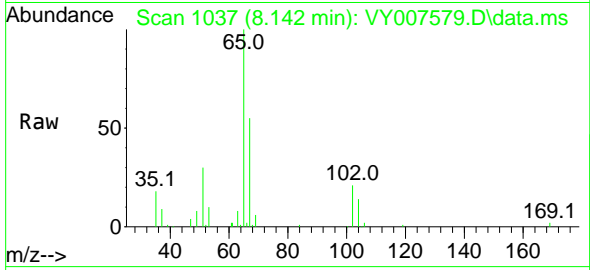
| Ion | Ratio | Lower | Upper |
|-----|-------|-------|-------|
| 56 | 100 | | |
| 69 | 87.5 | 26.7 | 40.1# |
| 84 | 69.7 | 67.2 | 100.8 |



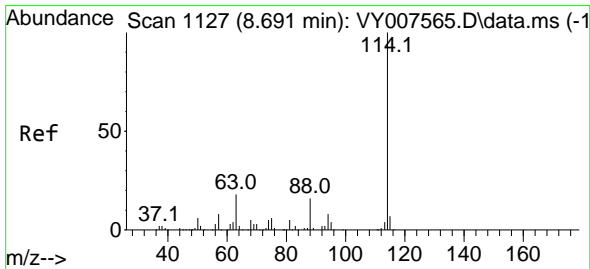
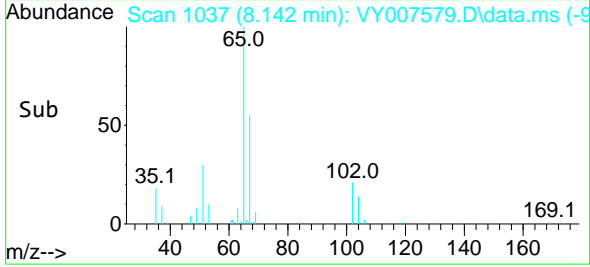
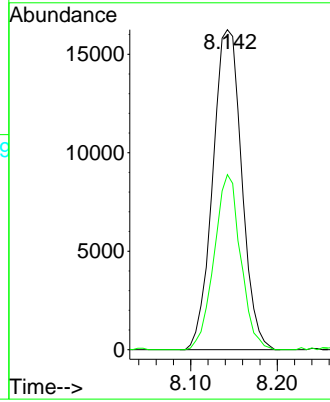


#33
 1,2-Dichloroethane-d4
 Concen: 57.042 ug/l
 RT: 8.142 min Scan# 1037
 Delta R.T. 0.000 min
 Lab File: VY007579.D
 Acq: 22 Feb 2022 13:45

Instrument : MSVOA_Y
 ClientSampleId : C0AA6

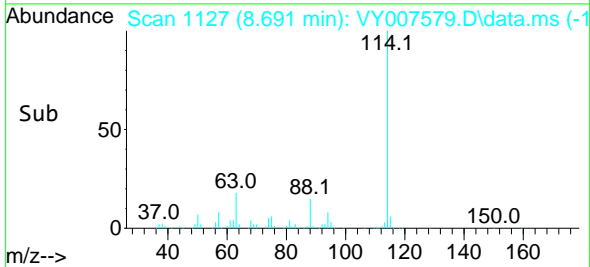
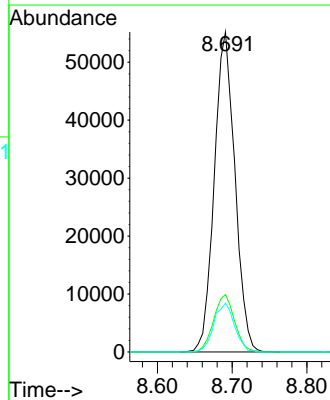
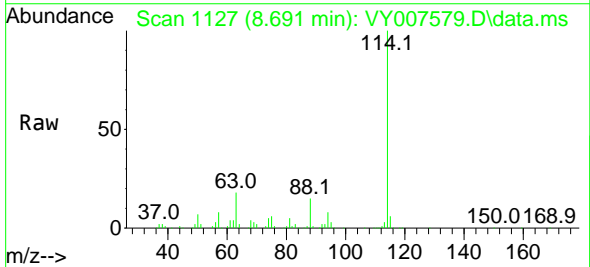


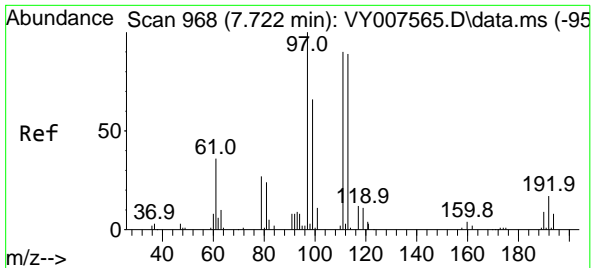
Tgt Ion: 65 Resp: 37759
 Ion Ratio Lower Upper
 65 100
 67 50.1 0.0 99.4



#34
 1,4-Difluorobenzene
 Concen: 50.000 ug/l
 RT: 8.691 min Scan# 1127
 Delta R.T. 0.000 min
 Lab File: VY007579.D
 Acq: 22 Feb 2022 13:45

Tgt Ion: 114 Resp: 105994
 Ion Ratio Lower Upper
 114 100
 63 18.0 0.0 43.2
 88 15.3 0.0 31.8



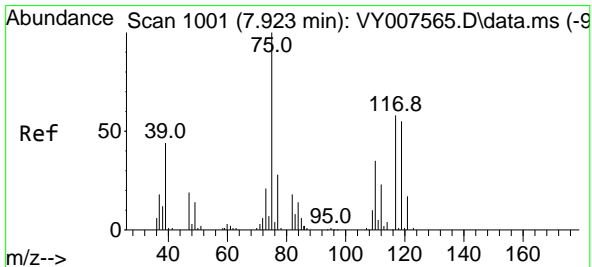
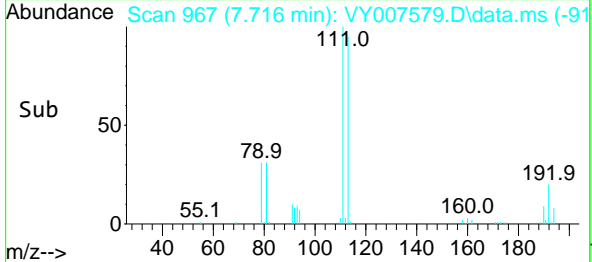
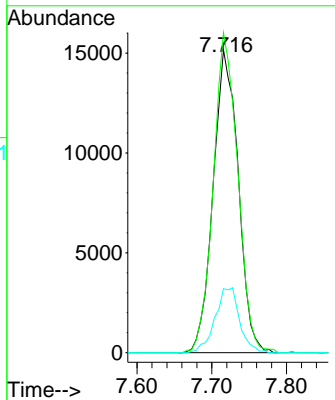
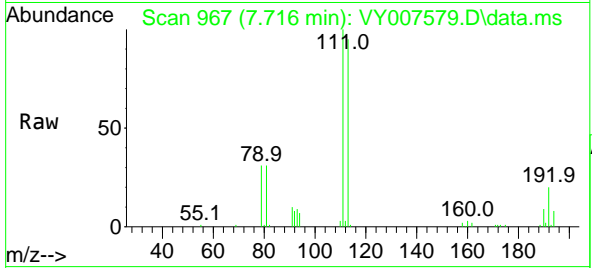


#35
 Dibromofluoromethane
 Concen: 52.600 ug/l
 RT: 7.716 min Scan# 90
 Delta R.T. -0.006 min
 Lab File: VY007579.D
 Acq: 22 Feb 2022 13:45

Instrument : MSVOA_Y
 ClientSampleId : C0AA6

Tgt Ion:113 Resp: 35352

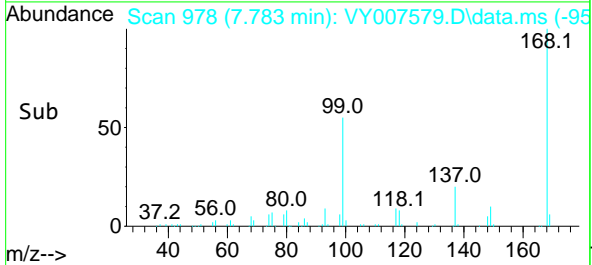
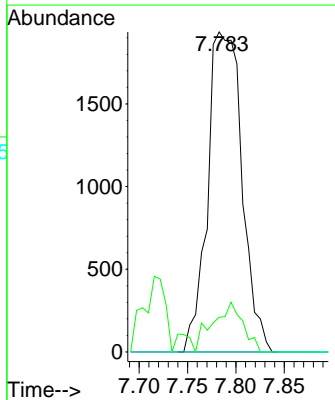
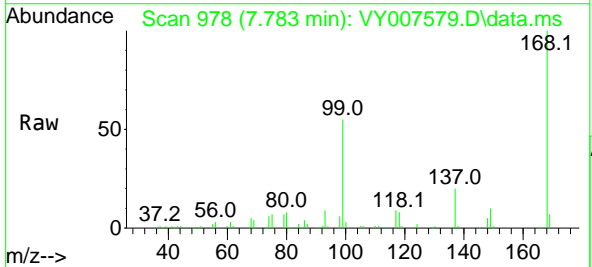
| Ion | Ratio | Lower | Upper |
|-----|-------|-------|-------|
| 113 | 100 | | |
| 111 | 103.0 | 82.6 | 124.0 |
| 192 | 20.9 | 17.6 | 26.4 |

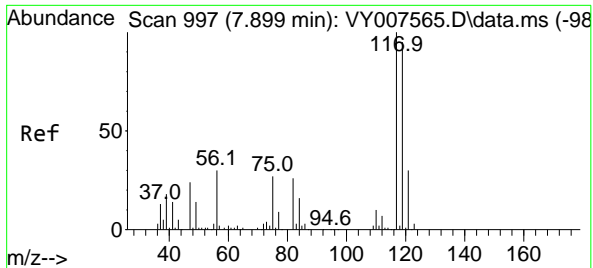


#36
 1,1-Dichloropropene
 Concen: 4.864 ug/l
 RT: 7.783 min Scan# 978
 Delta R.T. -0.140 min
 Lab File: VY007579.D
 Acq: 22 Feb 2022 13:45

Tgt Ion: 75 Resp: 4777

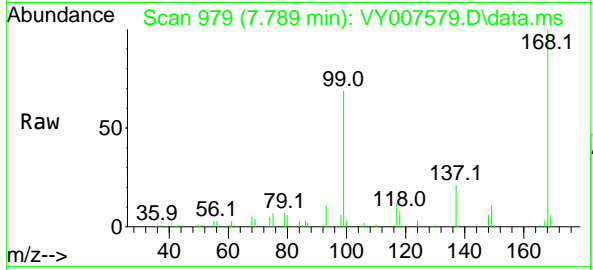
| Ion | Ratio | Lower | Upper |
|-----|-------|-------|-------|
| 75 | 100 | | |
| 110 | 13.7 | 17.1 | 51.2# |
| 77 | 0.0 | 24.4 | 36.6# |



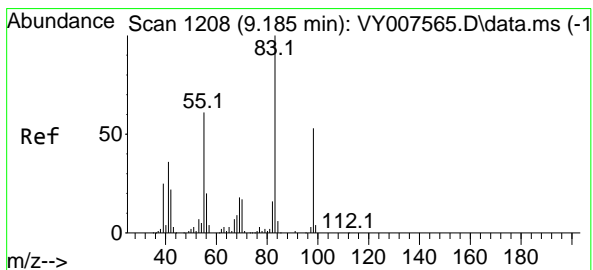
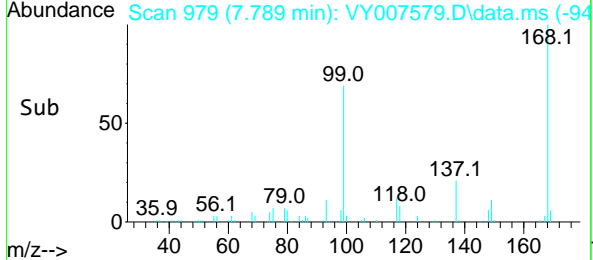
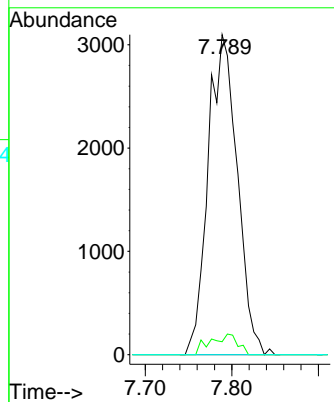


#38
 Carbon Tetrachloride
 Concen: 5.478 ug/l
 RT: 7.789 min Scan# 91
 Delta R.T. -0.110 min
 Lab File: VY007579.D
 Acq: 22 Feb 2022 13:45

Instrument :
 MSVOA_Y
 ClientSampleId :
 C0AA6

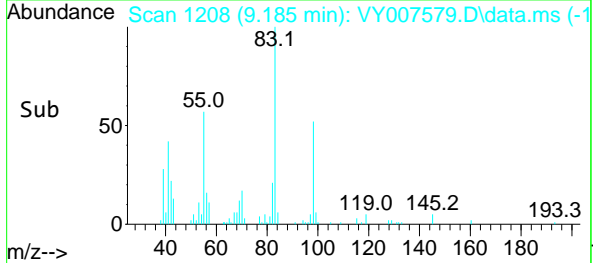
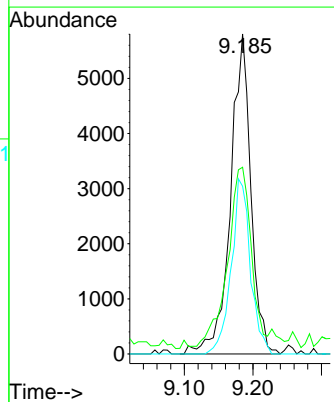
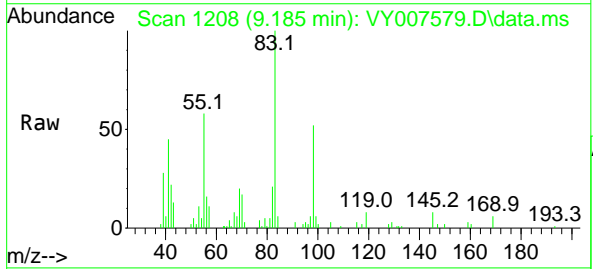


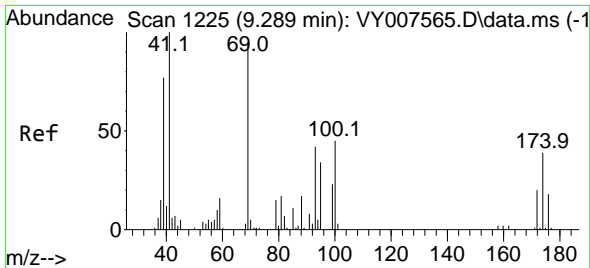
Tgt Ion: 117 Resp: 7245
 Ion Ratio Lower Upper
 117 100
 119 4.0 77.9 116.9#
 121 0.0 24.8 37.2#



#39
 Methylcyclohexane
 Concen: 9.694 ug/l
 RT: 9.185 min Scan# 1208
 Delta R.T. -0.000 min
 Lab File: VY007579.D
 Acq: 22 Feb 2022 13:45

Tgt Ion: 83 Resp: 12023
 Ion Ratio Lower Upper
 83 100
 55 56.6 66.5 99.7#
 98 52.4 37.9 56.9



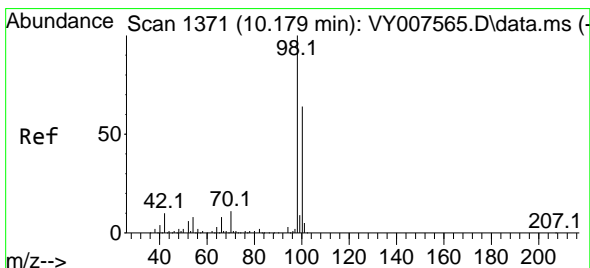
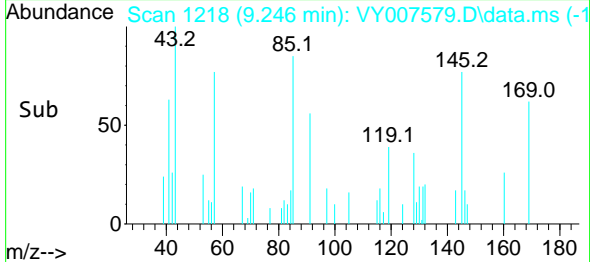
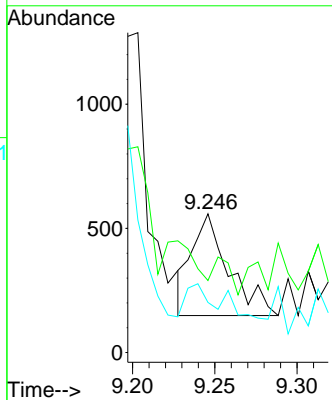
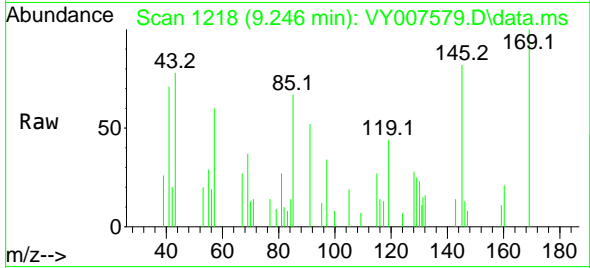


#48
 Methyl methacrylate
 Concen: 1.791 ug/l
 RT: 9.246 min Scan# 11
 Delta R.T. -0.043 min
 Lab File: VY007579.D
 Acq: 22 Feb 2022 13:45

Instrument :
 MSVOA_Y
 ClientSampleId :
 C0AA6

Tgt Ion: 41 Resp: 641

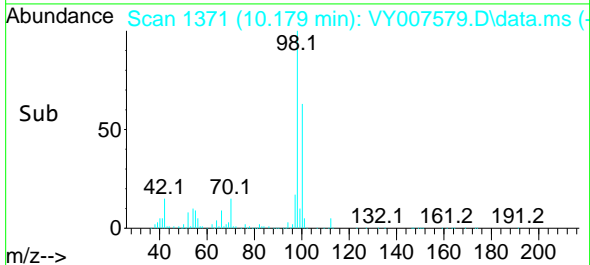
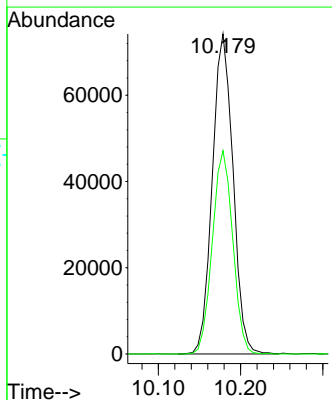
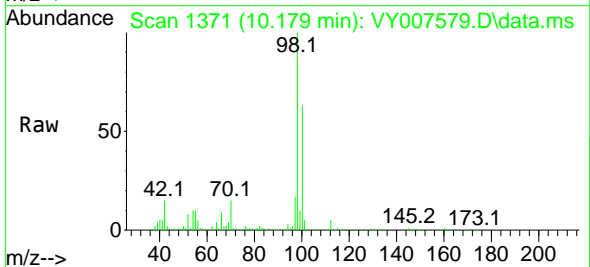
| Ion | Ratio | Lower | Upper |
|-----|-------|-------|-------|
| 41 | 100 | | |
| 69 | 0.0 | 58.2 | 87.2# |
| 39 | 19.2 | 47.4 | 71.0# |

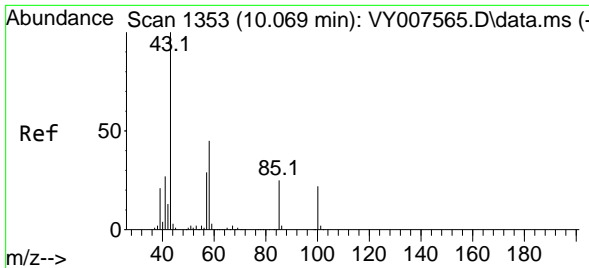


#50
 Toluene-d8
 Concen: 55.612 ug/l
 RT: 10.179 min Scan# 1371
 Delta R.T. -0.000 min
 Lab File: VY007579.D
 Acq: 22 Feb 2022 13:45

Tgt Ion: 98 Resp: 129594

| Ion | Ratio | Lower | Upper |
|-----|-------|-------|-------|
| 98 | 100 | | |
| 100 | 62.7 | 50.2 | 75.2 |

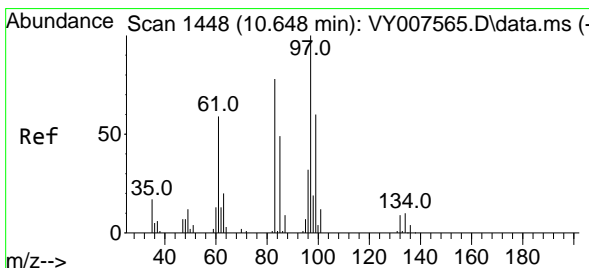
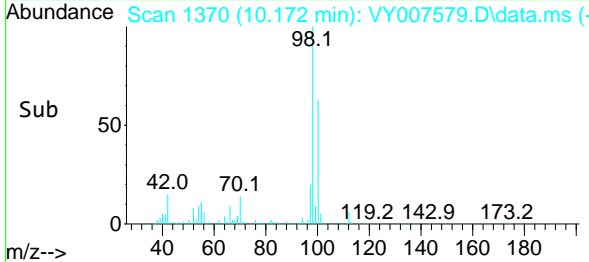
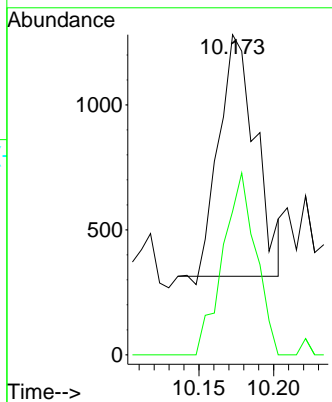
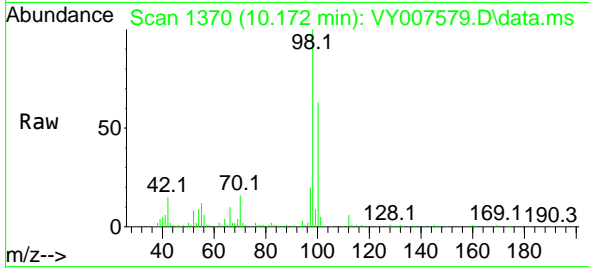




#51
 4-Methyl-2-Pentanone
 Concen: 4.044 ug/l
 RT: 10.172 min Scan# 11
 Delta R.T. 0.103 min
 Lab File: VY007579.D
 Acq: 22 Feb 2022 13:45

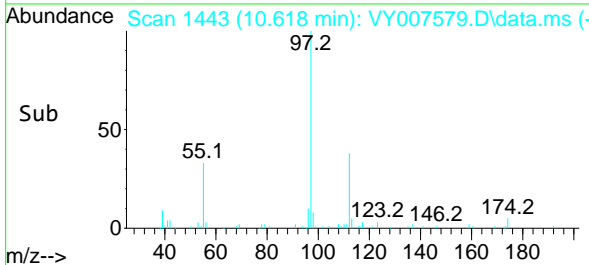
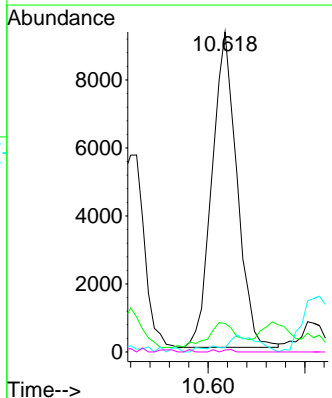
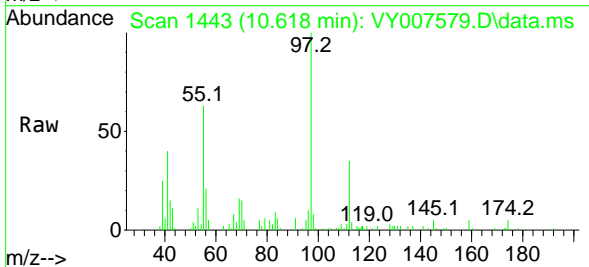
Instrument : MSVOA_Y
 ClientSampleId : C0AA6

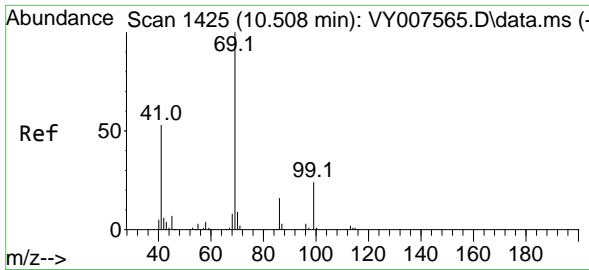
Tgt Ion: 43 Resp: 1657
 Ion Ratio Lower Upper
 43 100
 58 67.4 28.1 42.1#



#55
 1,1,2-Trichloroethane
 Concen: 27.915 ug/l
 RT: 10.618 min Scan# 1443
 Delta R.T. -0.030 min
 Lab File: VY007579.D
 Acq: 22 Feb 2022 13:45

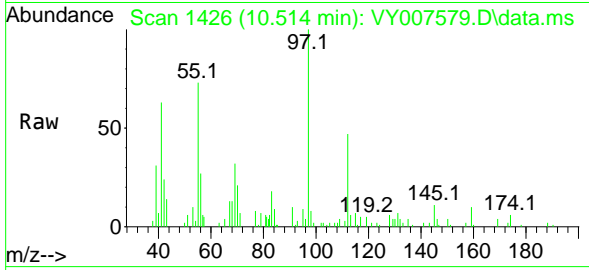
Tgt Ion: 97 Resp: 16580
 Ion Ratio Lower Upper
 97 100
 83 7.0 69.8 104.8#
 85 1.3 44.3 66.5#
 99 0.6 49.8 74.6#



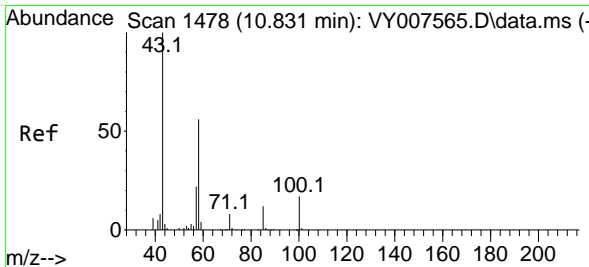
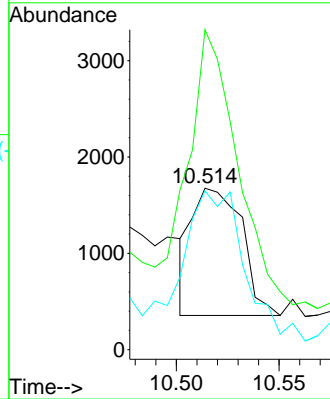
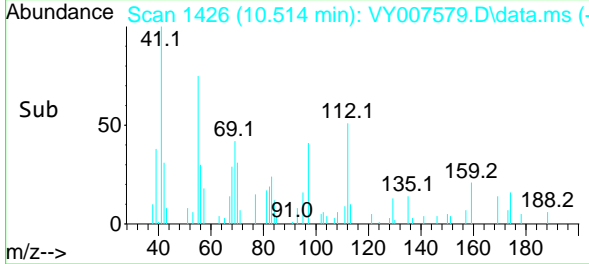


#56
 Ethyl methacrylate
 Concen: 3.039 ug/l
 RT: 10.514 min Scan# 1425
 Delta R.T. 0.006 min
 Lab File: VY007579.D
 Acq: 22 Feb 2022 13:45

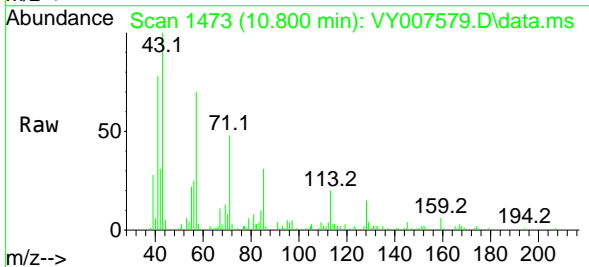
Instrument : MSVOA_Y
 ClientSampleId : C0AA6



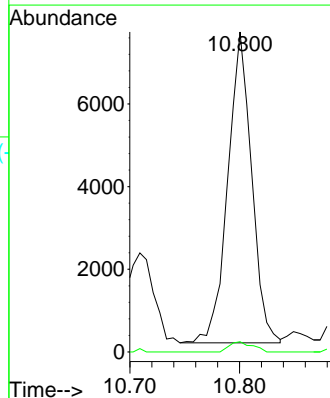
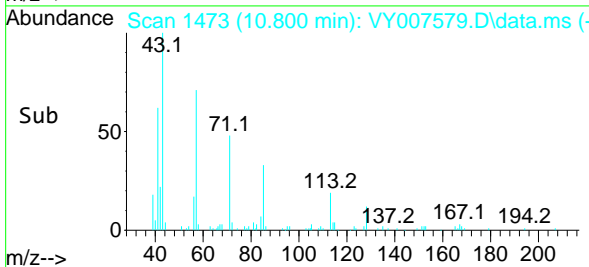
Tgt Ion: 69 Resp: 2219
 Ion Ratio Lower Upper
 69 100
 41 222.9 63.4 95.0#
 39 148.8 35.8 53.8#

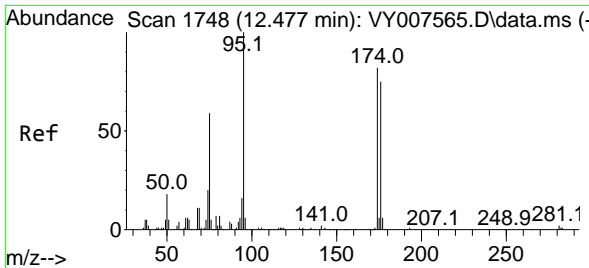


#59
 2-Hexanone
 Concen: 38.496 ug/l
 RT: 10.800 min Scan# 1473
 Delta R.T. -0.031 min
 Lab File: VY007579.D
 Acq: 22 Feb 2022 13:45



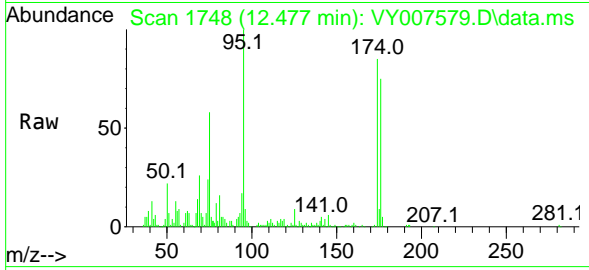
Tgt Ion: 43 Resp: 11369
 Ion Ratio Lower Upper
 43 100
 58 3.2 24.4 73.4#



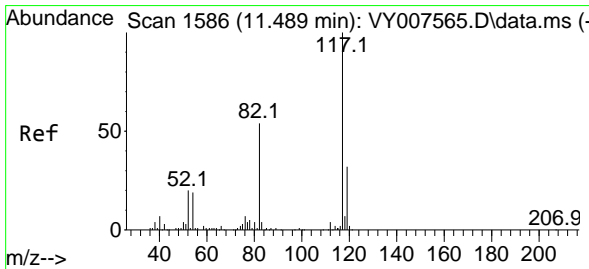
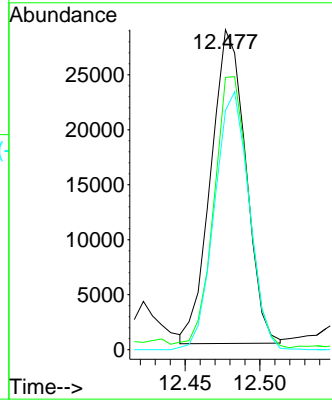
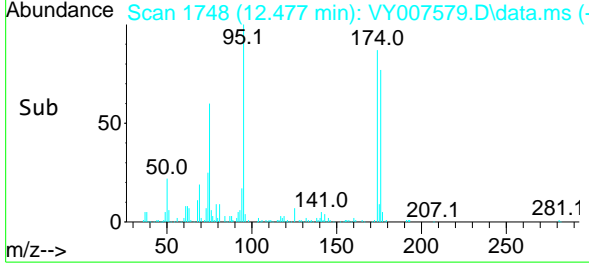


#62
 4-Bromofluorobenzene
 Concen: 54.845 ug/l
 RT: 12.477 min Scan# 11
 Delta R.T. -0.000 min
 Lab File: VY007579.D
 Acq: 22 Feb 2022 13:45

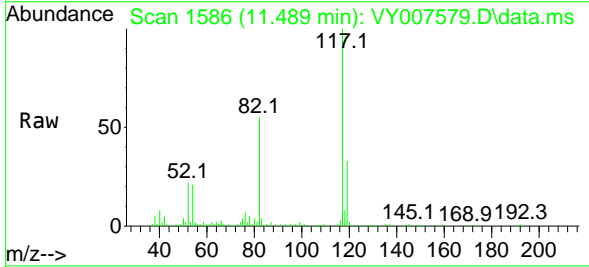
Instrument :
 MSVOA_Y
 ClientSampleId :
 C0AA6



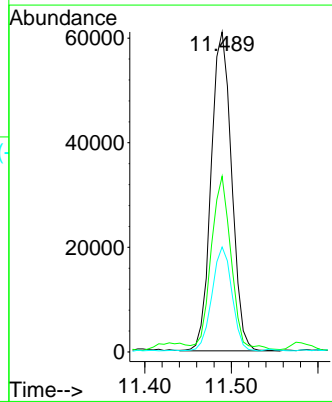
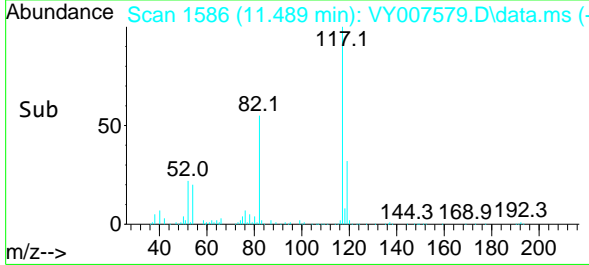
Tgt Ion: 95 Resp: 46277
 Ion Ratio Lower Upper
 95 100
 174 85.9 0.0 177.0
 176 81.6 0.0 175.8

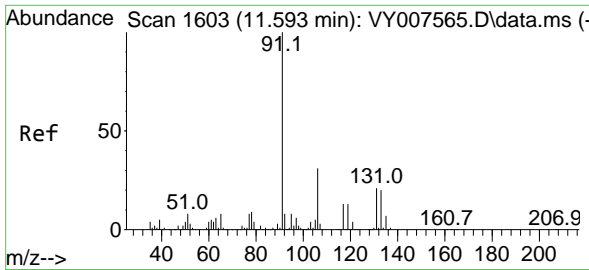


#63
 Chlorobenzene-d5
 Concen: 50.000 ug/l
 RT: 11.489 min Scan# 1586
 Delta R.T. 0.000 min
 Lab File: VY007579.D
 Acq: 22 Feb 2022 13:45



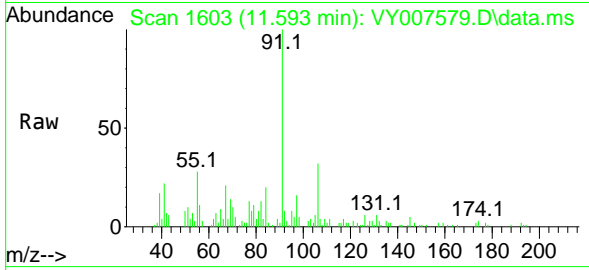
Tgt Ion: 117 Resp: 100147
 Ion Ratio Lower Upper
 117 100
 82 54.3 43.0 64.4
 119 32.5 25.4 38.0



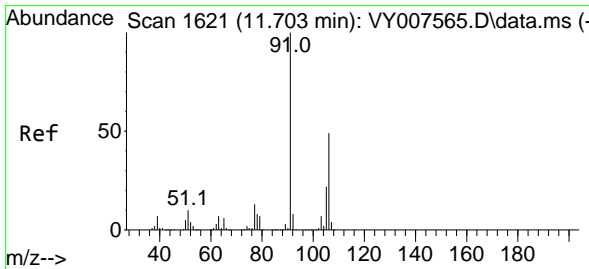
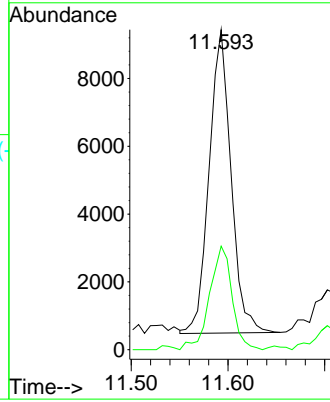
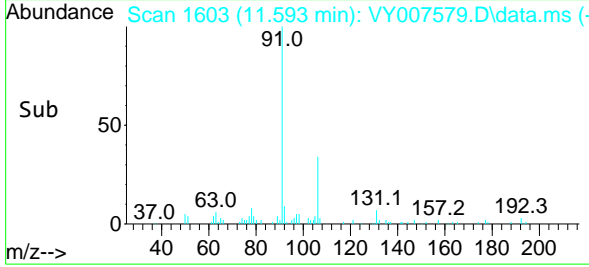


#67
 Ethyl Benzene
 Concen: 3.787 ug/l
 RT: 11.593 min Scan# 1603
 Delta R.T. -0.000 min
 Lab File: VY007579.D
 Acq: 22 Feb 2022 13:45

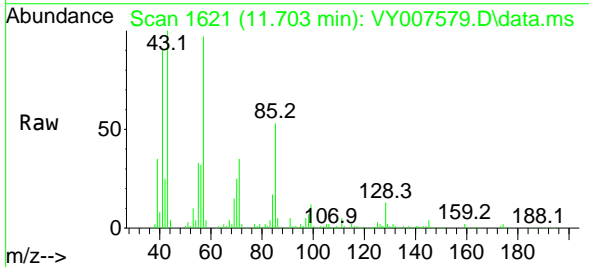
Instrument : MSVOA_Y
 ClientSampleId : C0AA6



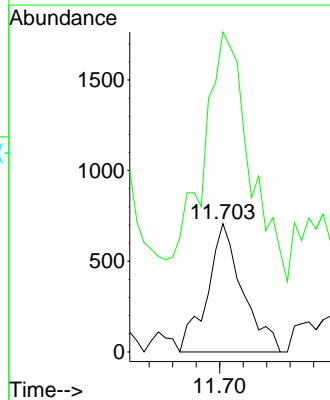
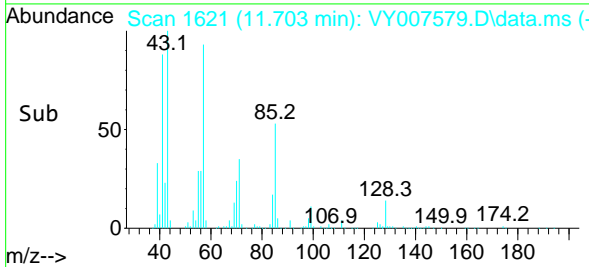
Tgt Ion: 91 Resp: 14091
 Ion Ratio Lower Upper
 91 100
 106 34.2 24.5 36.7

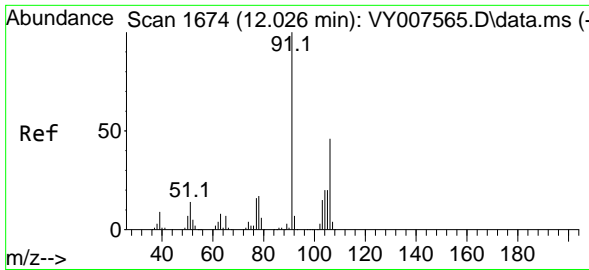


#68
 m/p-Xylenes
 Concen: 1.039 ug/l
 RT: 11.703 min Scan# 1621
 Delta R.T. -0.000 min
 Lab File: VY007579.D
 Acq: 22 Feb 2022 13:45



Tgt Ion: 106 Resp: 1472
 Ion Ratio Lower Upper
 106 100
 91 258.8 166.6 249.8#

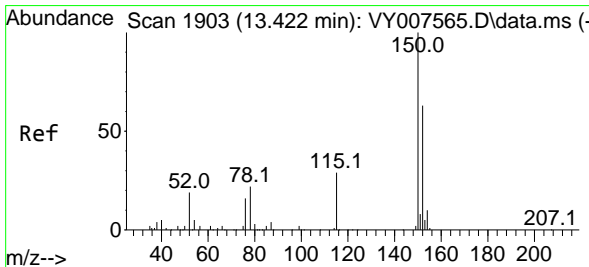
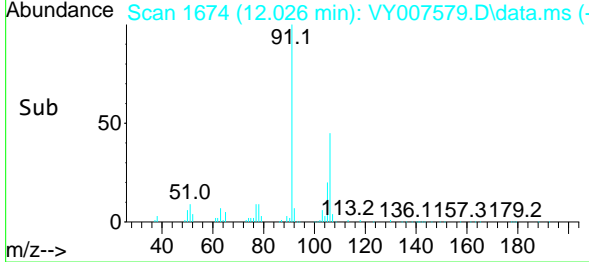
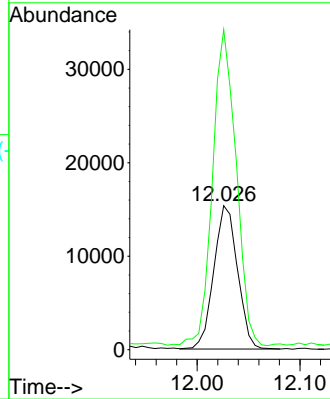
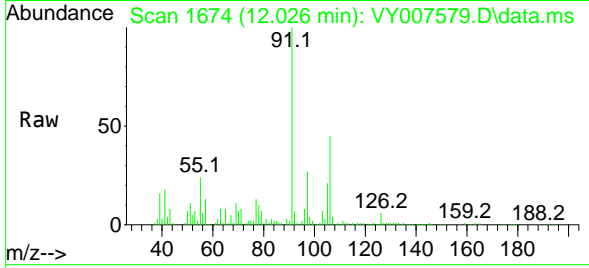




#69
 o-Xylene
 Concen: 18.189 ug/l
 RT: 12.026 min Scan# 1
 Delta R.T. -0.000 min
 Lab File: VY007579.D
 Acq: 22 Feb 2022 13:45

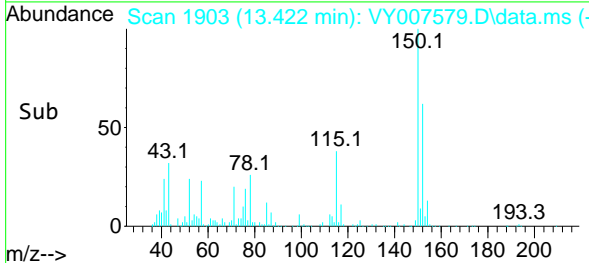
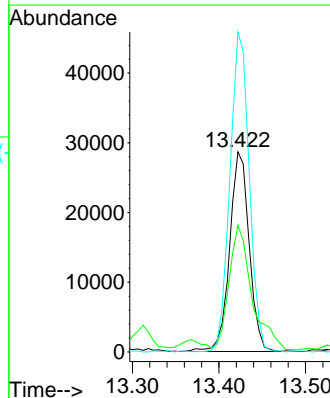
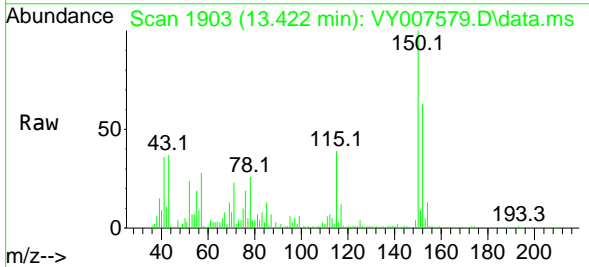
Instrument :
 MSVOA_Y
 ClientSampleId :
 C0AA6

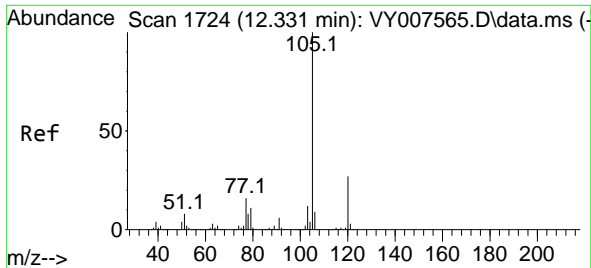
Tgt Ion:106 Resp: 24571
 Ion Ratio Lower Upper
 106 100
 91 218.9 110.3 331.0



#72
 1,4-Dichlorobenzene-d4
 Concen: 50.000 ug/l
 RT: 13.422 min Scan# 1903
 Delta R.T. -0.000 min
 Lab File: VY007579.D
 Acq: 22 Feb 2022 13:45

Tgt Ion:152 Resp: 44871
 Ion Ratio Lower Upper
 152 100
 115 73.2 28.2 84.7
 150 158.4 0.0 347.6

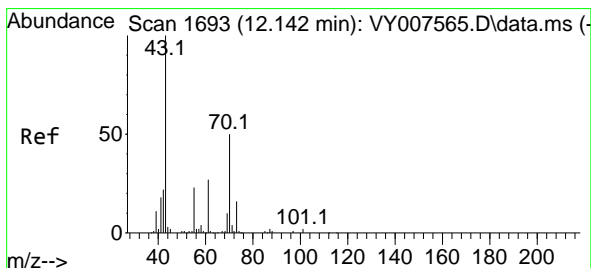
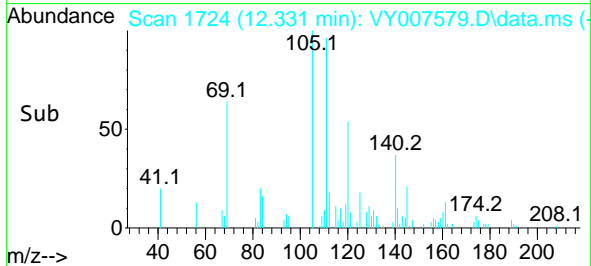
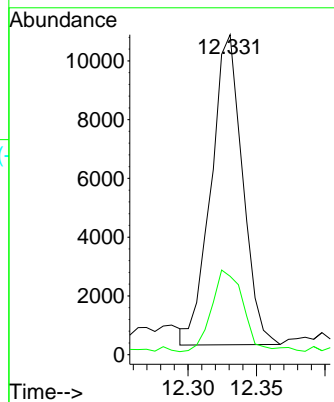
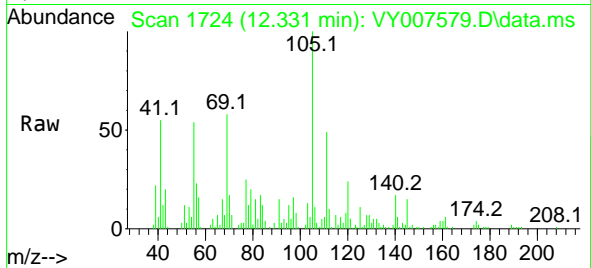




#73
 Isopropylbenzene
 Concen: 4.743 ug/l
 RT: 12.331 min Scan# 11
 Delta R.T. -0.000 min
 Lab File: VY007579.D
 Acq: 22 Feb 2022 13:45

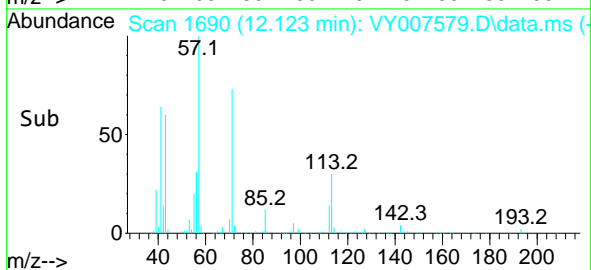
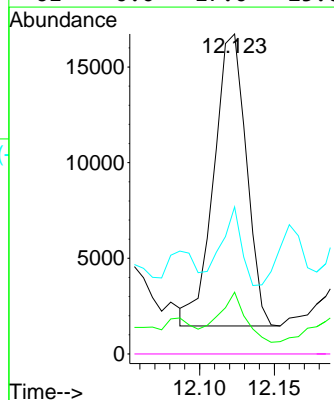
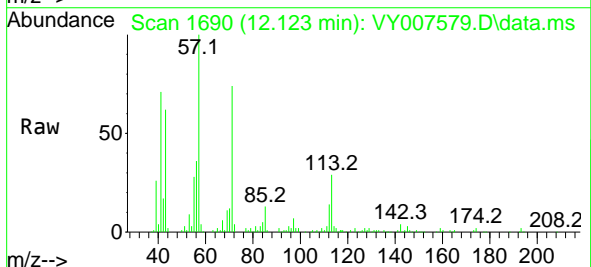
Instrument : MSVOA_Y
 ClientSampleId : C0AA6

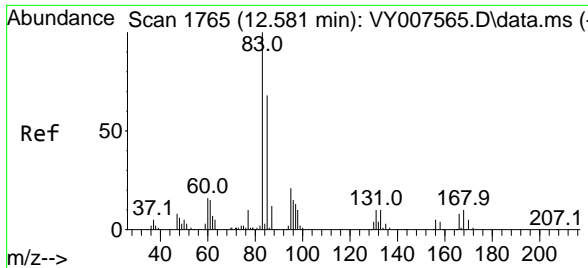
Tgt Ion: 105 Resp: 16847
 Ion Ratio Lower Upper
 105 100
 120 27.0 13.4 40.2



#74
 N-ethyl acetate
 Concen: 33.381 ug/l
 RT: 12.123 min Scan# 1690
 Delta R.T. -0.019 min
 Lab File: VY007579.D
 Acq: 22 Feb 2022 13:45

Tgt Ion: 43 Resp: 22995
 Ion Ratio Lower Upper
 43 100
 70 14.3 28.7 43.1#
 55 15.7 17.3 25.9#
 61 0.0 17.0 25.6#



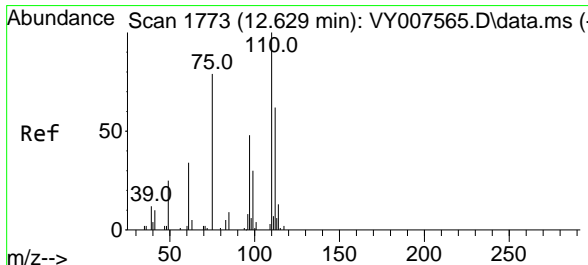
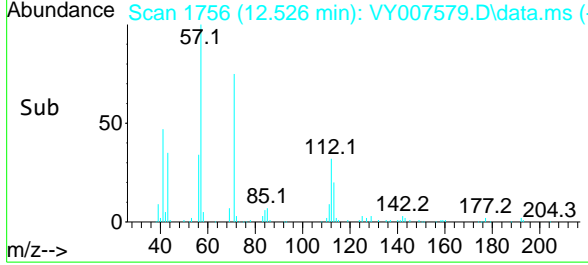
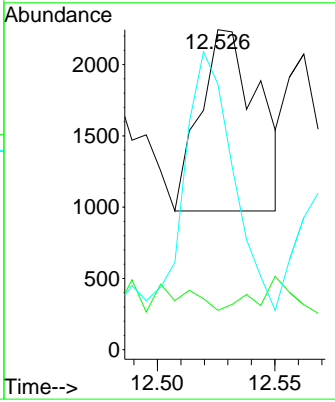
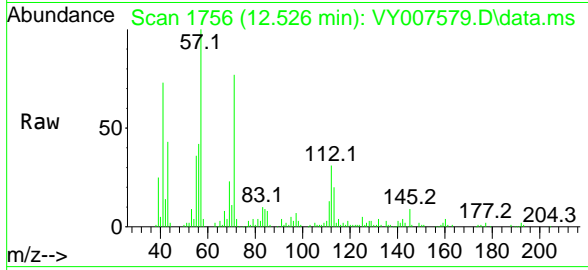


#75
 1,1,2,2-Tetrachloroethane
 Concen: 3.564 ug/l
 RT: 12.526 min Scan# 1748
 Delta R.T. -0.055 min
 Lab File: VY007579.D
 Acq: 22 Feb 2022 13:45

Instrument : MSVOA_Y
 ClientSampleId : C0AA6

Tgt Ion: 83 Resp: 2191

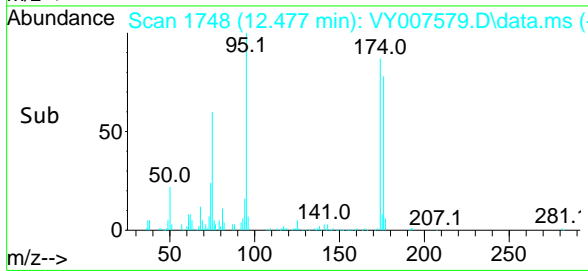
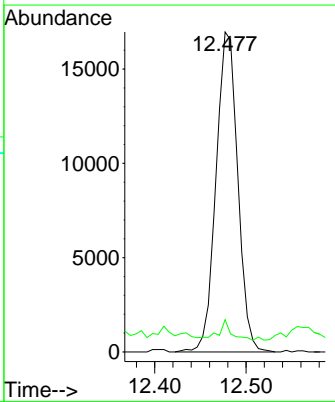
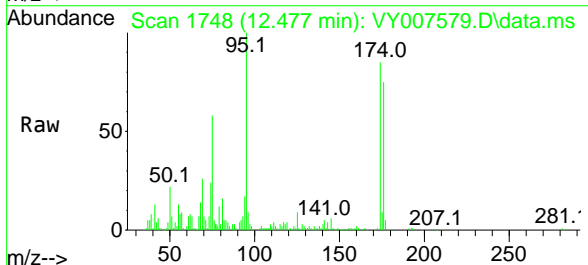
| Ion | Ratio | Lower | Upper |
|-----|-------|-------|-------|
| 83 | 100 | | |
| 131 | 0.0 | 5.6 | 16.8# |
| 85 | 116.2 | 32.3 | 96.8# |

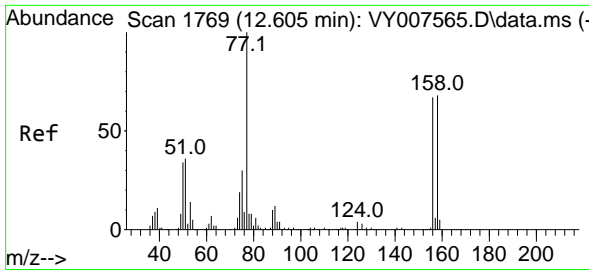


#76
 1,2,3-Trichloropropane
 Concen: 53.439 ug/l
 RT: 12.477 min Scan# 1748
 Delta R.T. -0.152 min
 Lab File: VY007579.D
 Acq: 22 Feb 2022 13:45

Tgt Ion: 75 Resp: 28068

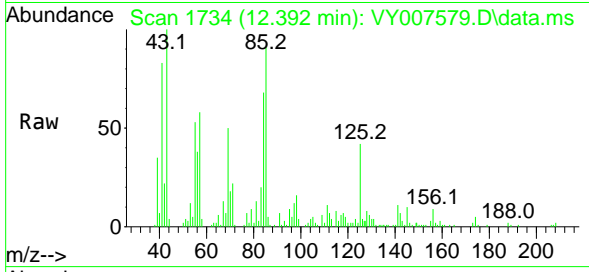
| Ion | Ratio | Lower | Upper |
|-----|-------|-------|-------|
| 75 | 100 | | |
| 77 | 3.8 | 0.0 | 0.0# |



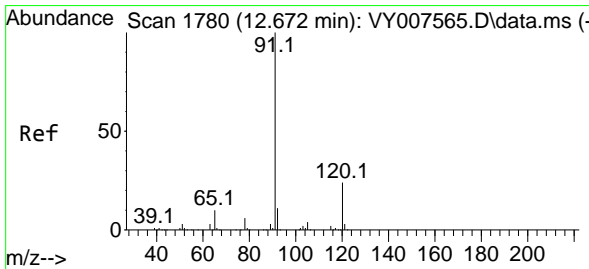
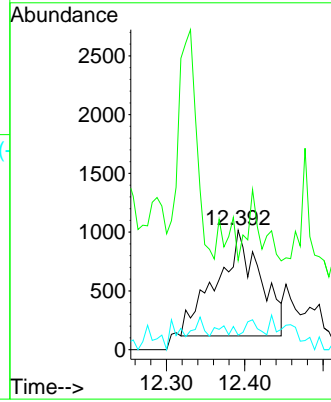
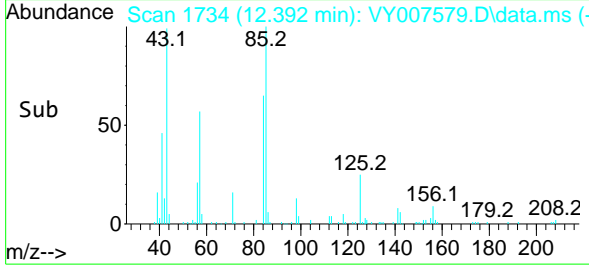


#77
 Bromobenzene
 Concen: 4.226 ug/l
 RT: 12.392 min Scan# 1773
 Delta R.T. -0.213 min
 Lab File: VY007579.D
 Acq: 22 Feb 2022 13:45

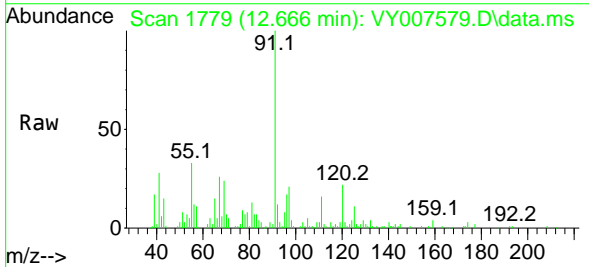
Instrument :
 MSVOA_Y
 ClientSampleId :
 C0AA6



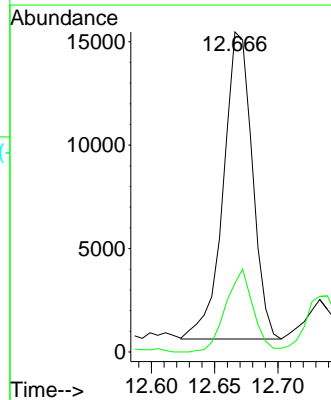
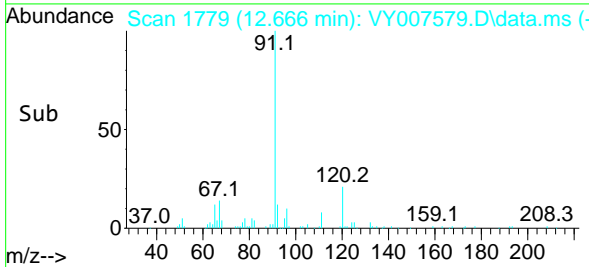
Tgt Ion:156 Resp: 3523
 Ion Ratio Lower Upper
 156 100
 77 14.2 95.5 286.4#
 158 5.7 48.0 144.0#

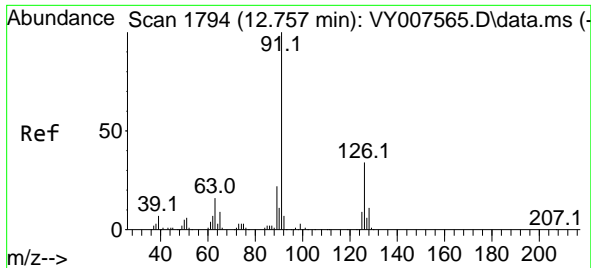


#78
 n-propylbenzene
 Concen: 5.694 ug/l
 RT: 12.666 min Scan# 1779
 Delta R.T. -0.006 min
 Lab File: VY007579.D
 Acq: 22 Feb 2022 13:45



Tgt Ion: 91 Resp: 23576
 Ion Ratio Lower Upper
 91 100
 120 25.8 11.3 33.9

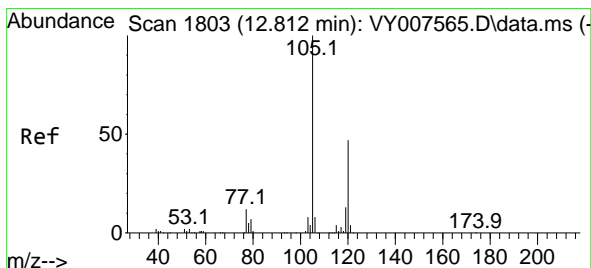
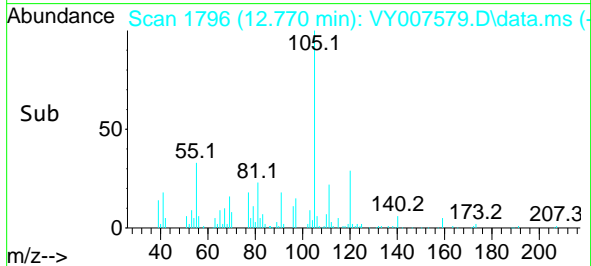
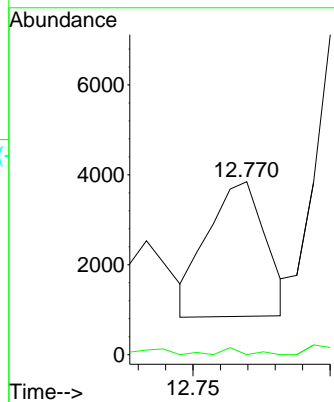
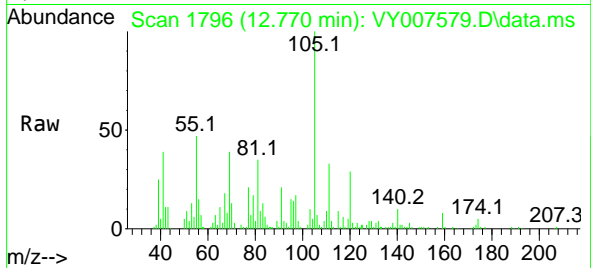




#79
 2-Chlorotoluene
 Concen: 1.901 ug/l
 RT: 12.770 min Scan# 11
 Delta R.T. 0.013 min
 Lab File: VY007579.D
 Acq: 22 Feb 2022 13:45

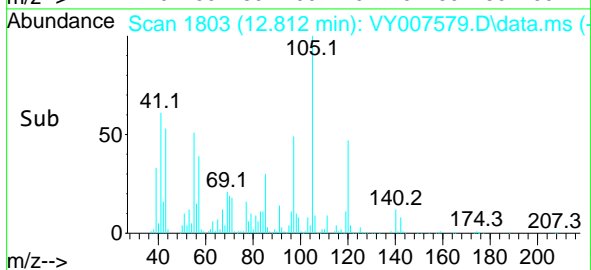
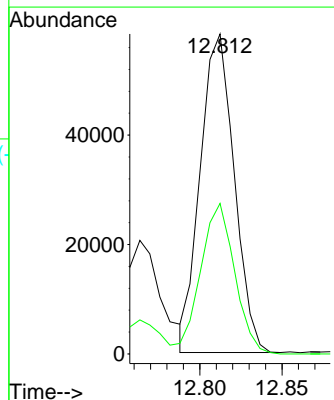
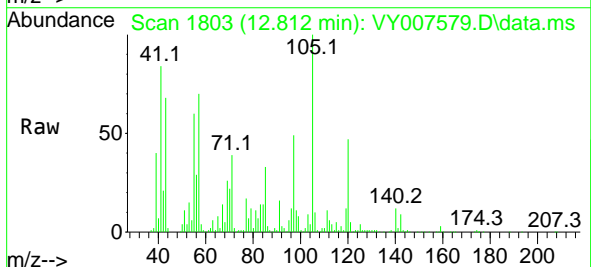
Instrument :
 MSVOA_Y
 ClientSampleId :
 C0AA6

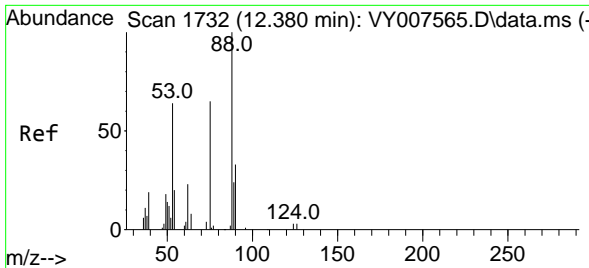
Tgt Ion: 91 Resp: 4407
 Ion Ratio Lower Upper
 91 100
 126 1.8 16.9 50.6#



#80
 1,3,5-Trimethylbenzene
 Concen: 28.046 ug/l
 RT: 12.812 min Scan# 1803
 Delta R.T. 0.000 min
 Lab File: VY007579.D
 Acq: 22 Feb 2022 13:45

Tgt Ion: 105 Resp: 83506
 Ion Ratio Lower Upper
 105 100
 120 47.6 24.4 73.4



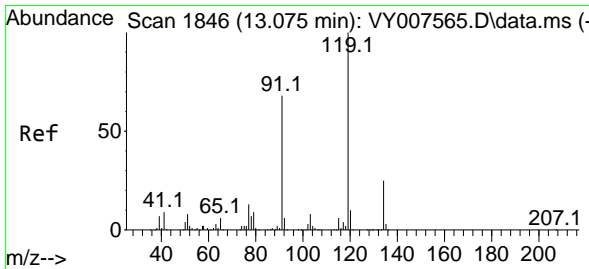
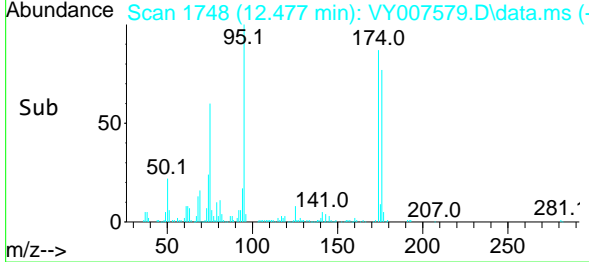
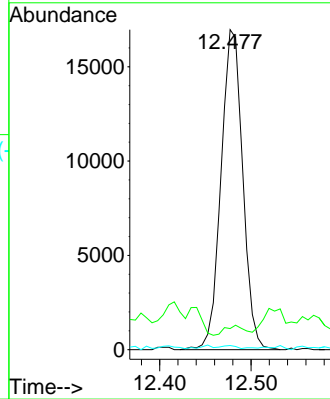
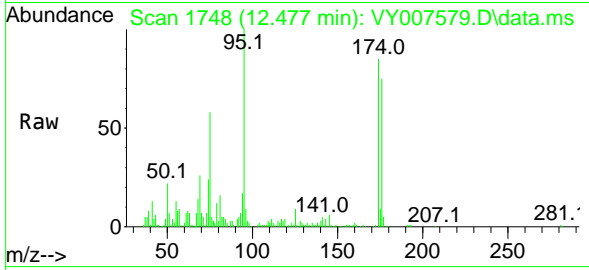


#81
 trans-1,4-Dichloro-2-butene
 Concen: 130.965 ug/l
 RT: 12.477 min Scan# 11
 Delta R.T. 0.097 min
 Lab File: VY007579.D
 Acq: 22 Feb 2022 13:45

Instrument : MSVOA_Y
 ClientSampleId : C0AA6

Tgt Ion: 75 Resp: 28068

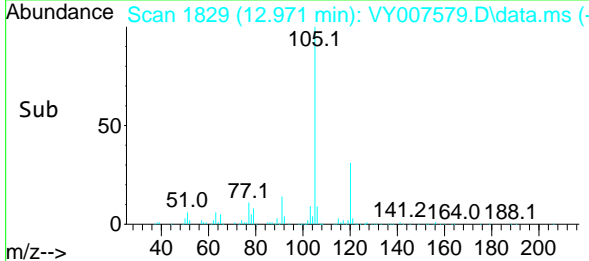
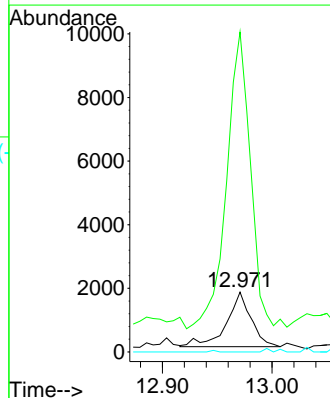
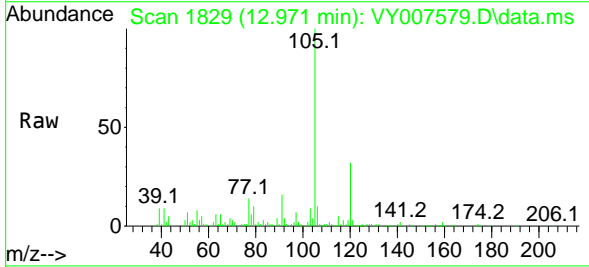
| Ion | Ratio | Lower | Upper |
|-----|-------|-------|--------|
| 75 | 100 | | |
| 53 | 2.8 | 85.3 | 127.9# |
| 89 | 0.6 | 37.0 | 55.4# |

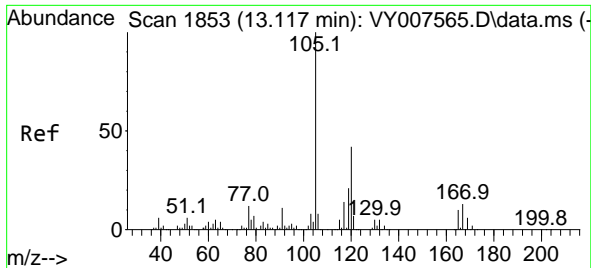


#83
 tert-Butylbenzene
 Concen: 1.008 ug/l
 RT: 12.971 min Scan# 1829
 Delta R.T. -0.104 min
 Lab File: VY007579.D
 Acq: 22 Feb 2022 13:45

Tgt Ion: 119 Resp: 2673

| Ion | Ratio | Lower | Upper |
|-----|-------|-------|--------|
| 119 | 100 | | |
| 91 | 530.5 | 34.8 | 104.4# |
| 134 | 0.0 | 13.3 | 39.9# |

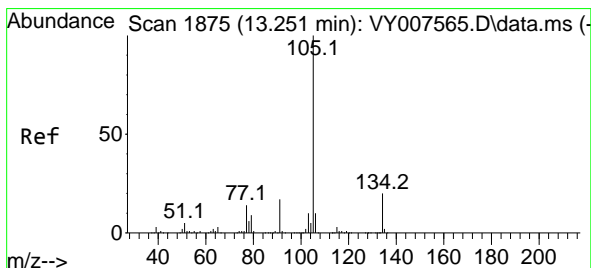
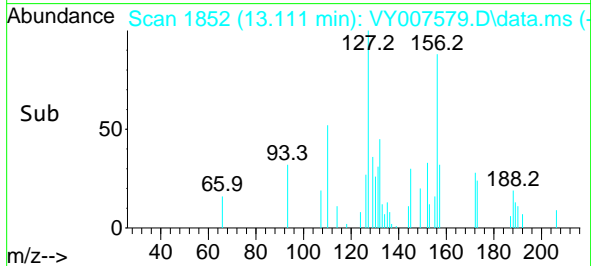
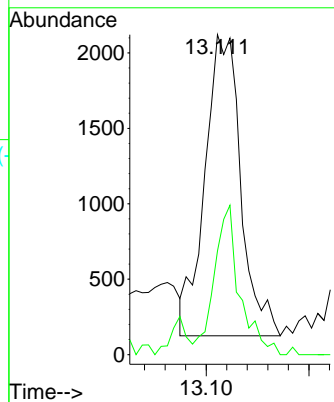
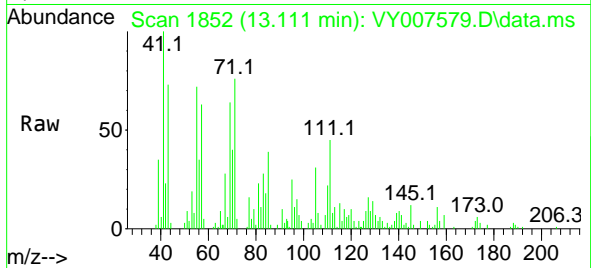




#84
 1,2,4-Trimethylbenzene
 Concen: 1.652 ug/l
 RT: 13.111 min Scan# 1852
 Delta R.T. -0.006 min
 Lab File: VY007579.D
 Acq: 22 Feb 2022 13:45

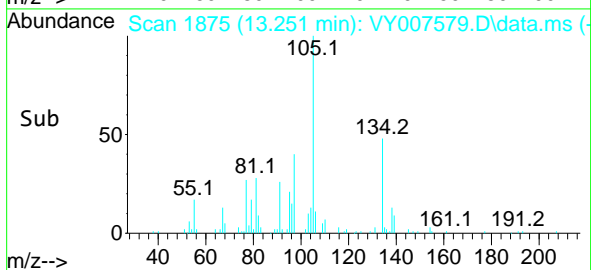
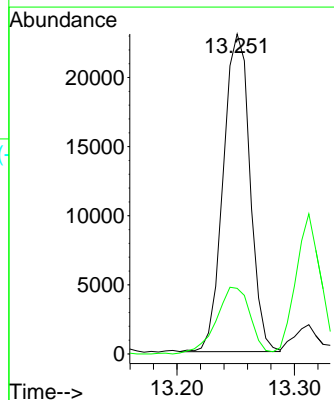
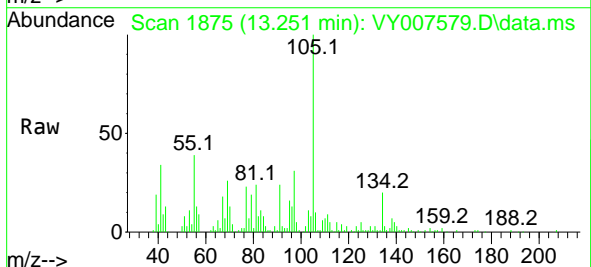
Instrument : MSVOA_Y
 ClientSampleId : C0AA6

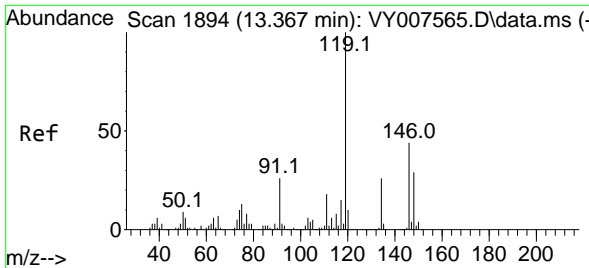
Tgt Ion:105 Resp: 4835
 Ion Ratio Lower Upper
 105 100
 120 35.0 22.3 66.9



#85
 sec-Butylbenzene
 Concen: 9.490 ug/l
 RT: 13.251 min Scan# 1875
 Delta R.T. 0.000 min
 Lab File: VY007579.D
 Acq: 22 Feb 2022 13:45

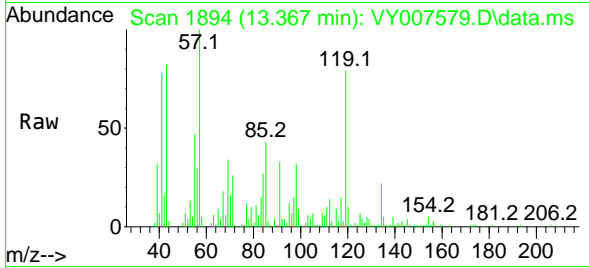
Tgt Ion:105 Resp: 36327
 Ion Ratio Lower Upper
 105 100
 134 26.8 10.2 30.4



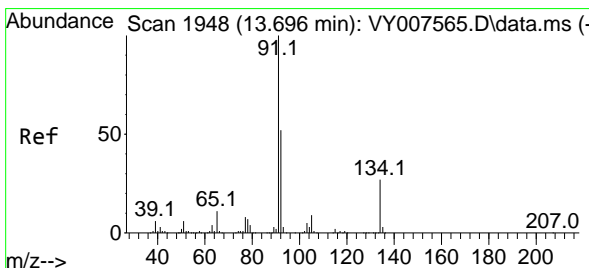
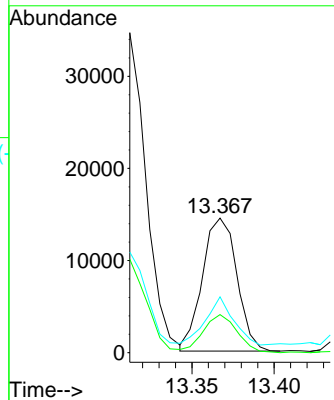
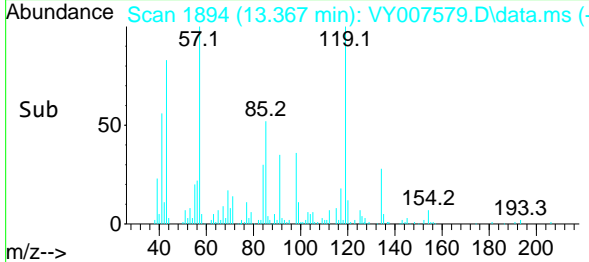


#86
 p-Isopropyltoluene
 Concen: 6.525 ug/l
 RT: 13.367 min Scan# 1894
 Delta R.T. 0.000 min
 Lab File: VY007579.D
 Acq: 22 Feb 2022 13:45

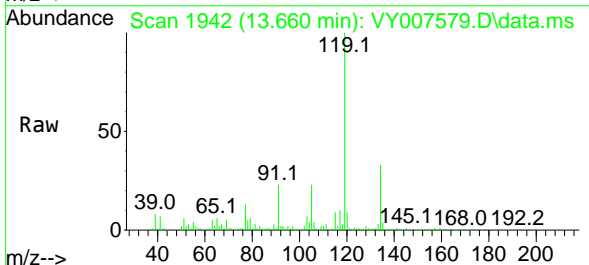
Instrument : MSVOA_Y
 ClientSampleId : C0AA6



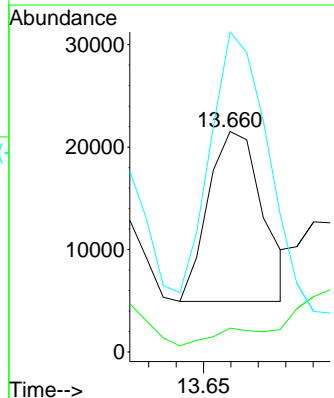
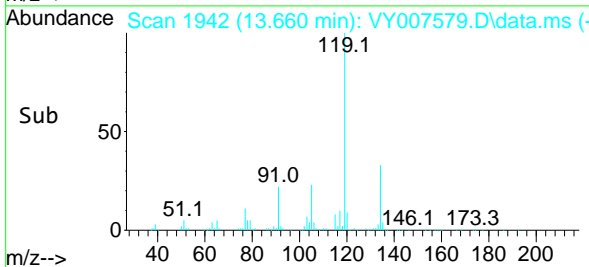
Tgt Ion:119 Resp: 21034
 Ion Ratio Lower Upper
 119 100
 134 28.1 13.2 39.5
 91 28.4 12.4 37.2

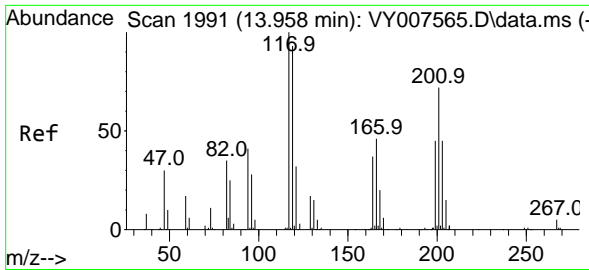


#89
 n-Butylbenzene
 Concen: 7.788 ug/l
 RT: 13.660 min Scan# 1942
 Delta R.T. -0.036 min
 Lab File: VY007579.D
 Acq: 22 Feb 2022 13:45



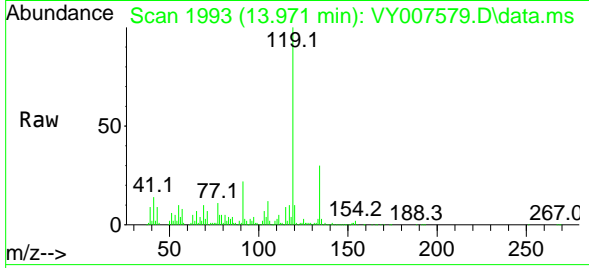
Tgt Ion: 91 Resp: 22929
 Ion Ratio Lower Upper
 91 100
 92 0.0 26.3 78.9#
 134 234.5 13.0 38.9#



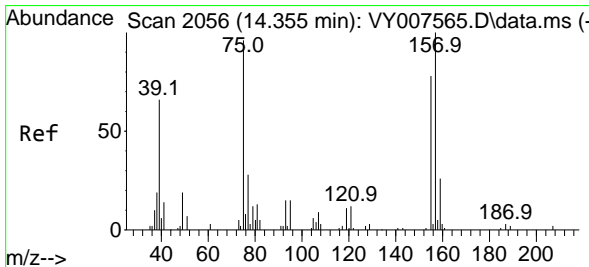
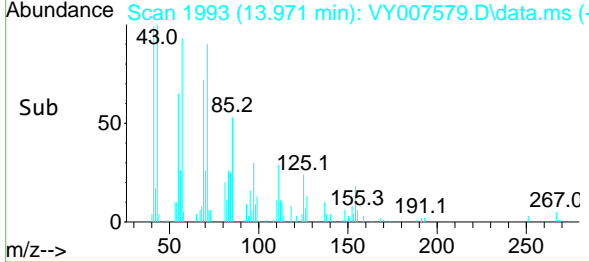
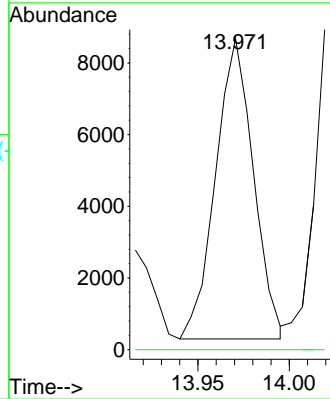


#90
 Hexachloroethane
 Concen: 18.915 ug/l
 RT: 13.971 min Scan# 1993
 Delta R.T. 0.013 min
 Lab File: VY007579.D
 Acq: 22 Feb 2022 13:45

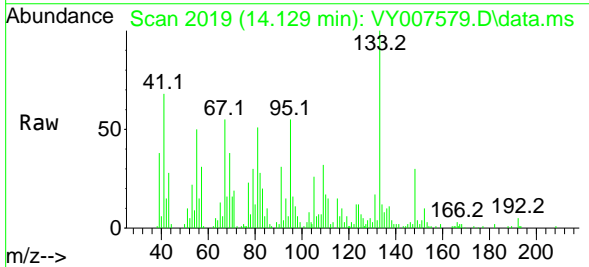
Instrument :
 MSVOA_Y
 ClientSampleId :
 C0AA6



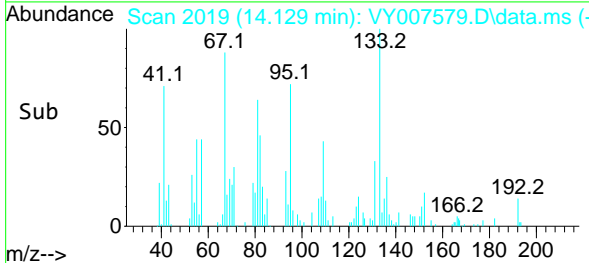
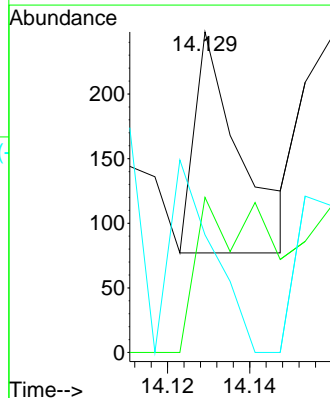
Tgt Ion:117 Resp: 12074
 Ion Ratio Lower Upper
 117 100
 201 0.0 43.0 128.8#

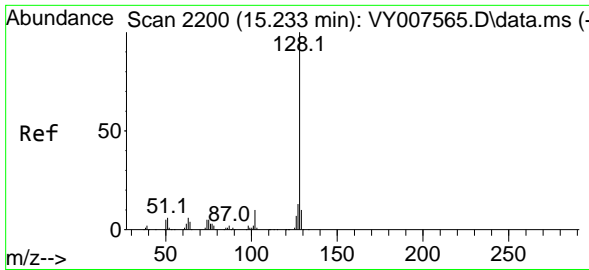


#92
 1,2-Dibromo-3-Chloropropane
 Concen: 1.152 ug/l
 RT: 14.129 min Scan# 2019
 Delta R.T. -0.226 min
 Lab File: VY007579.D
 Acq: 22 Feb 2022 13:45



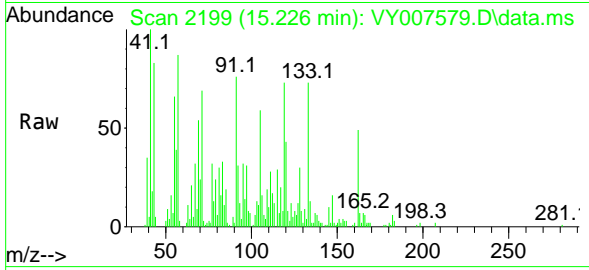
Tgt Ion: 75 Resp: 132
 Ion Ratio Lower Upper
 75 100
 155 106.8 38.0 113.9
 157 81.8 47.8 143.3



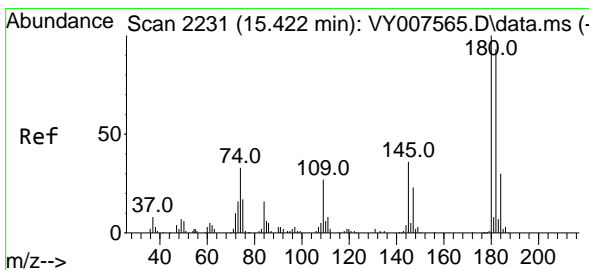
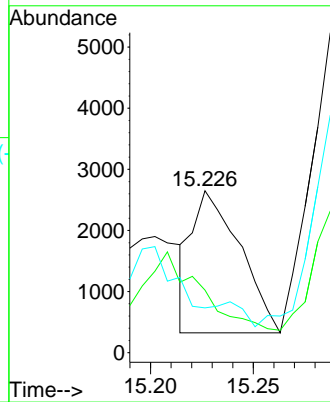
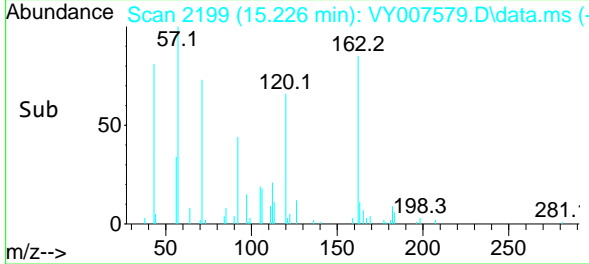


#95
 Naphthalene
 Concen: 1.934 ug/l
 RT: 15.226 min Scan# 2199
 Delta R.T. -0.007 min
 Lab File: VY007579.D
 Acq: 22 Feb 2022 13:45

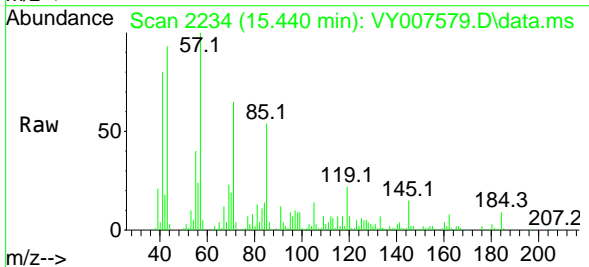
Instrument :
 MSVOA_Y
 ClientSampleId :
 C0AA6



Tgt Ion:128 Resp: 3748
 Ion Ratio Lower Upper
 128 100
 127 0.0 11.0 16.4#
 129 0.0 8.4 12.6#



#96
 1,2,3-Trichlorobenzene
 Concen: 1.485 ug/l
 RT: 15.440 min Scan# 2234
 Delta R.T. 0.018 min
 Lab File: VY007579.D
 Acq: 22 Feb 2022 13:45



Tgt Ion:180 Resp: 1224
 Ion Ratio Lower Upper
 180 100
 182 0.0 47.3 141.9#
 145 1262.5 15.3 45.9#

