

Data Path : Z:\voasrv\HPCHEM1\MSVOA_Y\Data\VY022322\
 Data File : VY007606.D
 Acq On : 23 Feb 2022 18:29
 Operator : SY/MD
 Sample : N1584-11
 Misc : 5.12g/5.0mL/MSVOA_Y/SOIL
 ALS Vial : 18 Sample Multiplier: 1

Instrument :
 MSVOA_Y
 ClientSampleId :
 D15-6

Quant Time: Feb 24 08:24:55 2022
 Quant Method : Z:\voasrv\HPCHEM1\MSVOA_Y\methods\82Y022322S.M
 Quant Title : SW846 8260
 QLast Update : Thu Feb 24 07:13:58 2022
 Response via : Initial Calibration

Manual Integrations
 APPROVED

Reviewed By :John Carlone 02/24/2022
 Supervised By :Mahesh Dadoda 02/24/2022

Compound	R.T.	QIon	Response	Conc	Units	Dev(Min)

Internal Standards						
1) Pentafluorobenzene	7.789	168	89885	50.000	ug/l	0.00
34) 1,4-Difluorobenzene	8.685	114	154940	50.000	ug/l	0.00
63) Chlorobenzene-d5	11.489	117	156987	50.000	ug/l	0.00
72) 1,4-Dichlorobenzene-d4	13.422	152	75154	50.000	ug/l	0.00
System Monitoring Compounds						
33) 1,2-Dichloroethane-d4	8.142	65	51722	51.726	ug/l	0.00
Spiked Amount	50.000	Range 50 - 163	Recovery	=	103.460%	
35) Dibromofluoromethane	7.716	113	49561	50.694	ug/l	0.00
Spiked Amount	50.000	Range 54 - 147	Recovery	=	101.380%	
50) Toluene-d8	10.179	98	185391	51.159	ug/l	0.00
Spiked Amount	50.000	Range 49 - 140	Recovery	=	102.320%	
62) 4-Bromofluorobenzene	12.477	95	69493	56.215	ug/l	0.00
Spiked Amount	50.000	Range 25 - 144	Recovery	=	112.440%	
Target Compounds						
						Qvalue
11) Tert butyl alcohol	4.948	59	3298m	32.747	ug/l	
16) Acetone	3.948	43	8155	35.810	ug/l	90
31) Cyclohexane	7.783	56	17310	14.065	ug/l #	74
39) Methylcyclohexane	9.185	83	18526m	9.985	ug/l	
40) Benzene	8.161	78	21090	5.247	ug/l	94
52) Toluene	10.240	92	6470	2.360	ug/l	93
67) Ethyl Benzene	11.587	91	140009	24.396	ug/l	99
68) m/p-Xylenes	11.703	106	15293	6.804	ug/l	98
73) Isopropylbenzene	12.325	105	20350	3.515	ug/l	98
78) n-propylbenzene	12.666	91	33913	5.072	ug/l	99
80) 1,3,5-Trimethylbenzene	12.806	105	5584	1.134	ug/l	98
84) 1,2,4-Trimethylbenzene	13.117	105	15578	3.227	ug/l	95
85) sec-Butylbenzene	13.251	105	8329	1.339	ug/l #	55
95) Naphthalene	15.233	128	51005	13.383	ug/l	97

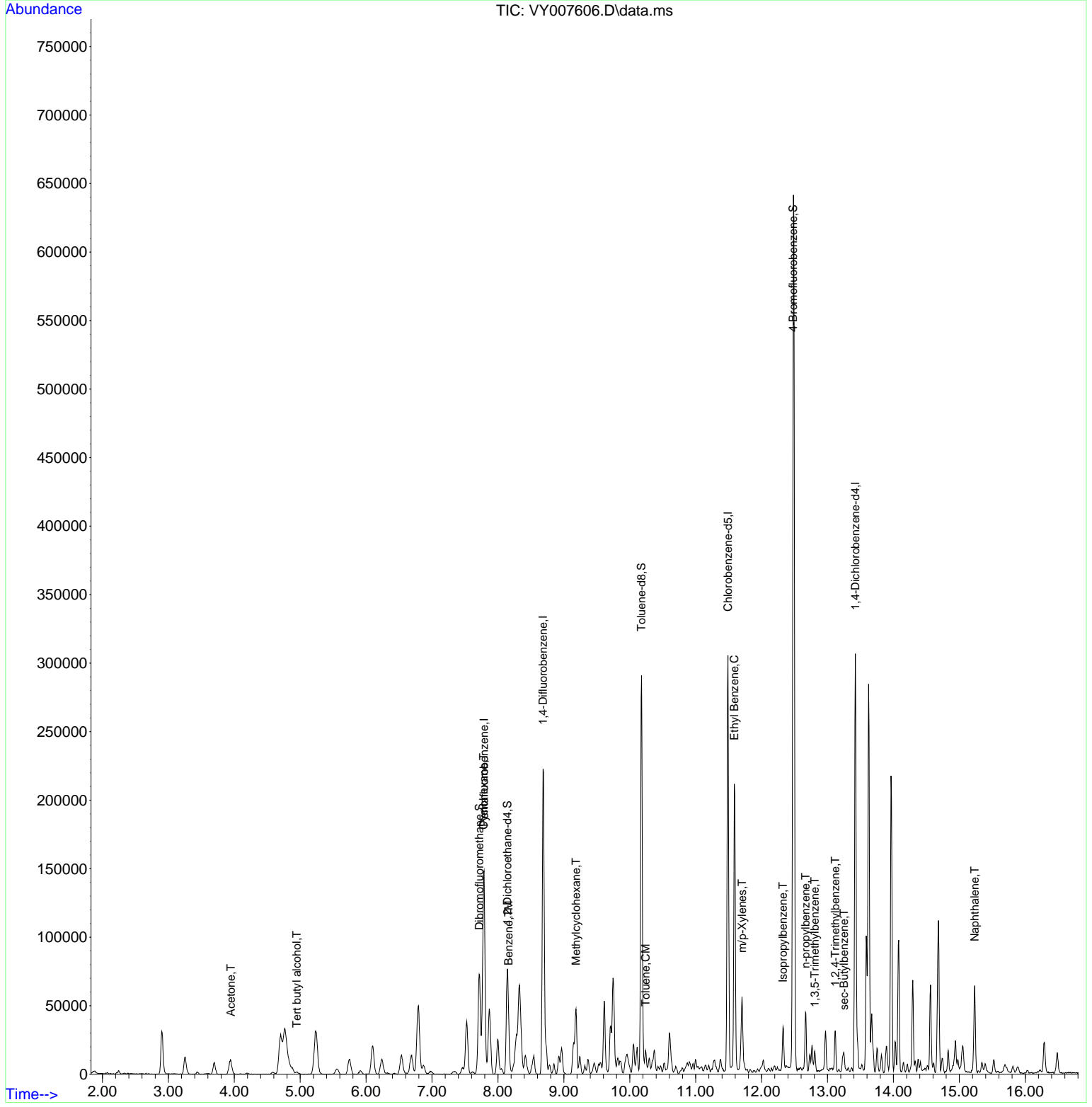
(#) = qualifier out of range (m) = manual integration (+) = signals summed

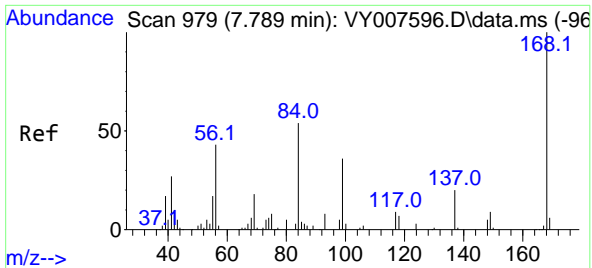
Data Path : Z:\voasrv\HPCHEM1\MSVOA_Y\Data\VY022322\
 Data File : VY007606.D
 Acq On : 23 Feb 2022 18:29
 Operator : SY/MD
 Sample : N1584-11
 Misc : 5.12g/5.0mL/MSVOA_Y/SOIL
 ALS Vial : 18 Sample Multiplier: 1

Instrument :
 MSVOA_Y
ClientSampleId :
 D15-6

Quant Time: Feb 24 08:24:55 2022
 Quant Method : Z:\voasrv\HPCHEM1\MSVOA_Y\methods\82Y022322S.M
 Quant Title : SW846 8260
 QLast Update : Thu Feb 24 07:13:58 2022
 Response via : Initial Calibration

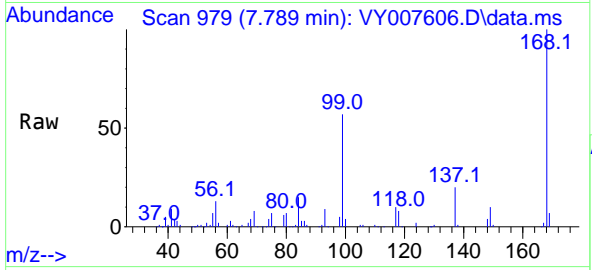
Manual Integrations
APPROVED
 Reviewed By :John Carlone 02/24/2022
 Supervised By :Mahesh Dadoda 02/24/2022





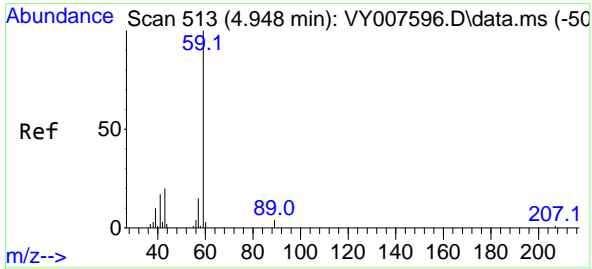
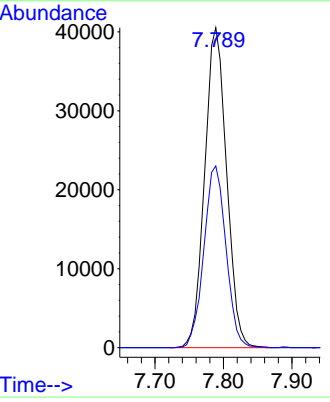
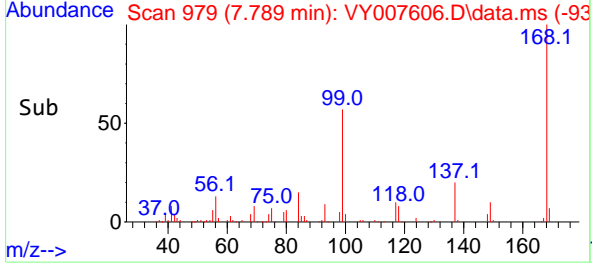
#1
 Pentafluorobenzene
 Concen: 50.000 ug/l
 RT: 7.789 min Scan# 91
 Delta R.T. -0.000 min
 Lab File: VY007606.D
 Acq: 23 Feb 2022 18:29

Instrument : MSVOA_Y
 ClientSampleId : D15-6

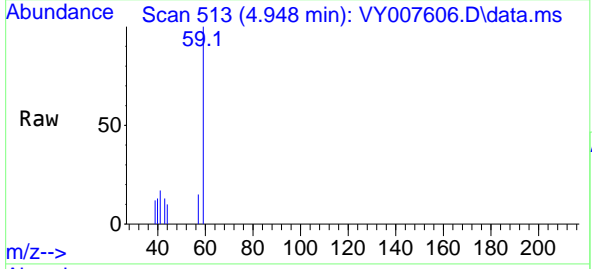


Tgt Ion:168 Resp: 8988
 Ion Ratio Lower Upper
 168 100
 99 56.8 46.9 70.3

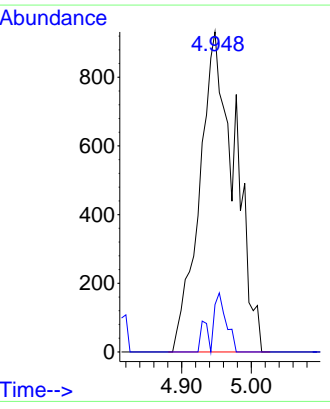
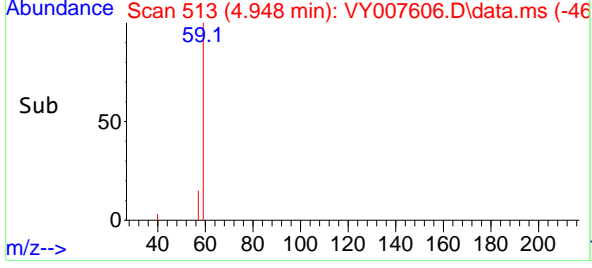
Manual Integrations
APPROVED
 Reviewed By :John Carlone 02/24/2022
 Supervised By :Mahesh Dadoda 02/24/2022

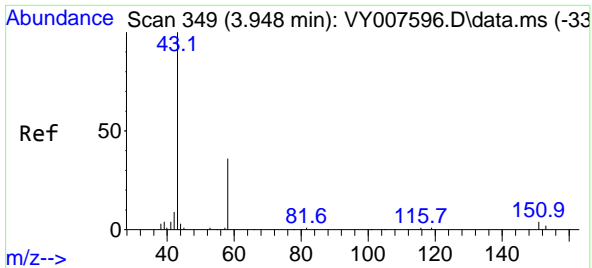


#11
 Tert butyl alcohol
 Concen: 32.747 ug/l m
 RT: 4.948 min Scan# 513
 Delta R.T. -0.000 min
 Lab File: VY007606.D
 Acq: 23 Feb 2022 18:29



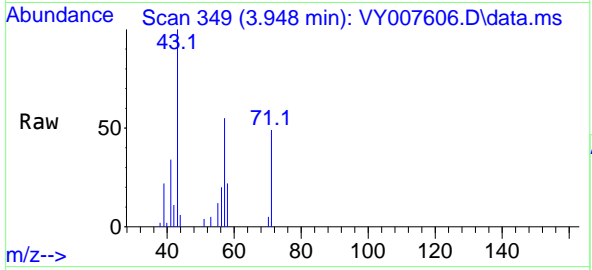
Tgt Ion: 59 Resp: 3298
 Ion Ratio Lower Upper
 59 100
 57 8.1 6.4 9.6





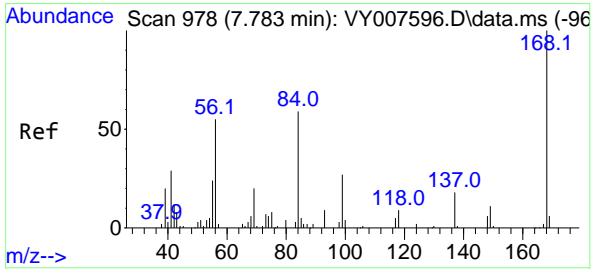
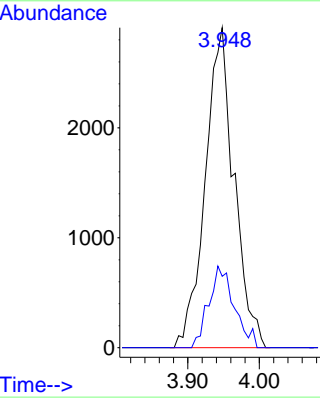
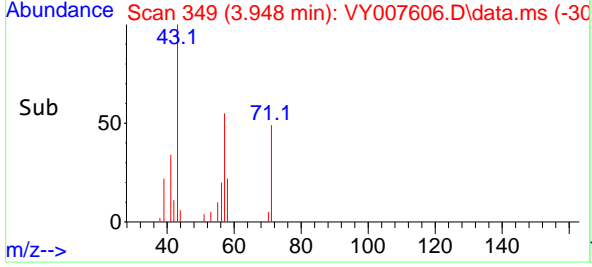
#16
 Acetone
 Concen: 35.810 ug/l
 RT: 3.948 min Scan# 349
 Delta R.T. 0.000 min
 Lab File: VY007606.D
 Acq: 23 Feb 2022 18:29

Instrument : MSVOA_Y
 Client SampleId : D15-6

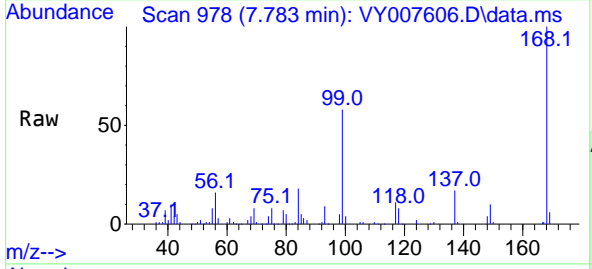


Tgt Ion: 43 Resp: 815
 Ion Ratio Lower Upper
 43 100
 58 22.3 22.0 33.0

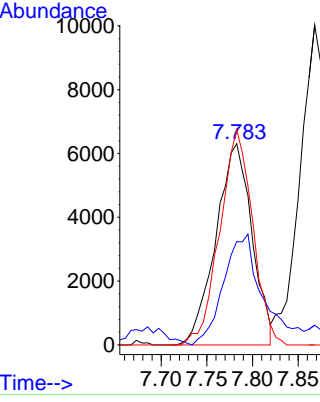
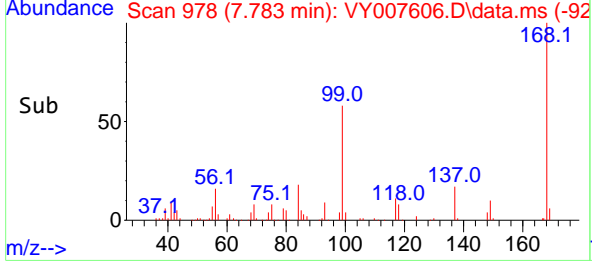
Manual Integrations
APPROVED
 Reviewed By :John Carlone 02/24/2022
 Supervised By :Mahesh Dadoda 02/24/2022

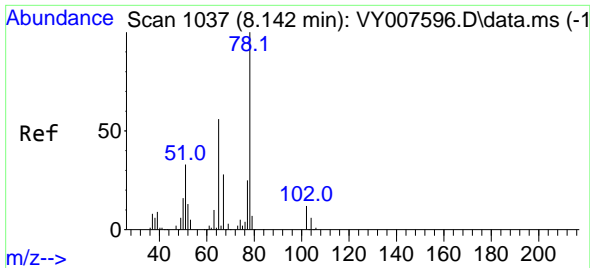


#31
 Cyclohexane
 Concen: 14.065 ug/l
 RT: 7.783 min Scan# 978
 Delta R.T. -0.000 min
 Lab File: VY007606.D
 Acq: 23 Feb 2022 18:29



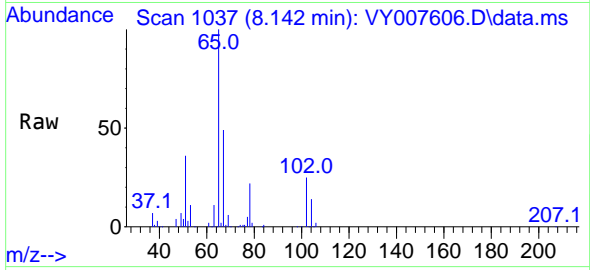
Tgt Ion: 56 Resp: 17310
 Ion Ratio Lower Upper
 56 100
 69 48.7 26.7 40.1#
 84 107.0 67.2 100.8#





#33
 1,2-Dichloroethane-d4
 Concen: 51.726 ug/l
 RT: 8.142 min Scan# 1037
 Delta R.T. 0.000 min
 Lab File: VY007606.D
 Acq: 23 Feb 2022 18:29

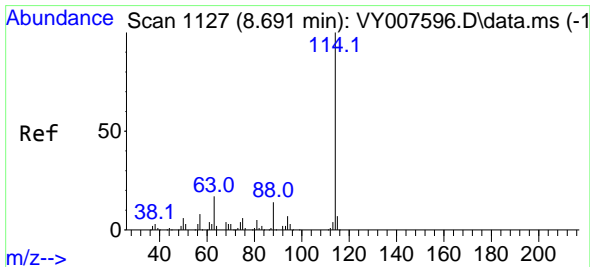
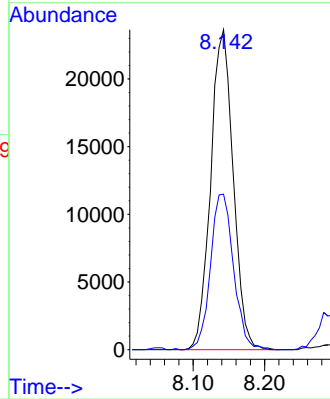
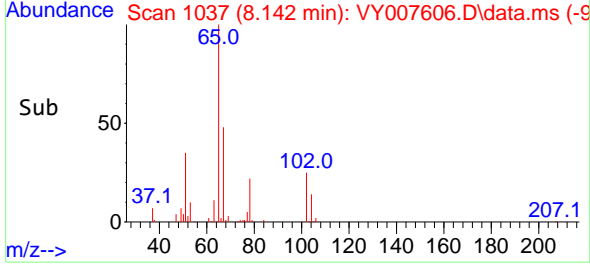
Instrument : MSVOA_Y
 ClientSampleId : D15-6



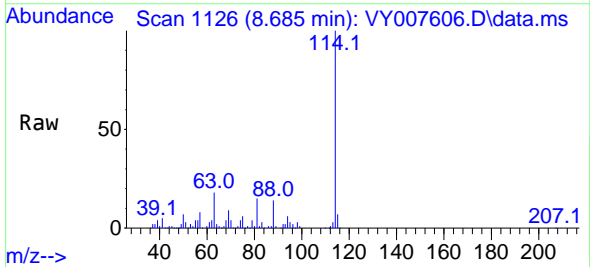
Tgt Ion: 65 Resp: 5172
 Ion Ratio Lower Upper
 65 100
 67 49.7 0.0 99.4

Manual Integrations
APPROVED

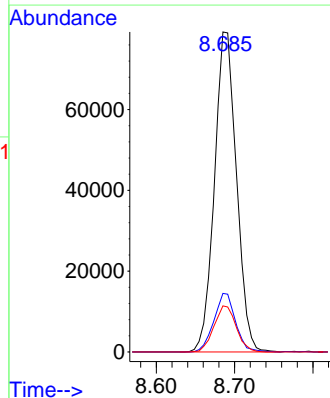
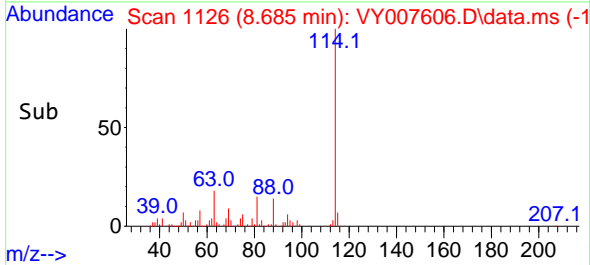
Reviewed By :John Carlone 02/24/2022
 Supervised By :Mahesh Dadoda 02/24/2022

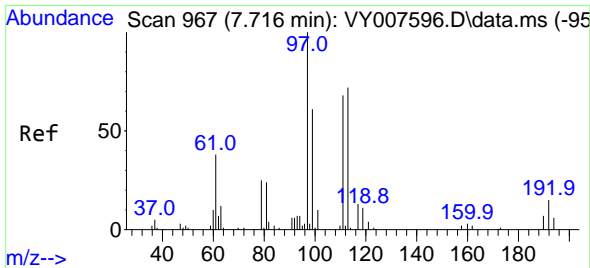


#34
 1,4-Difluorobenzene
 Concen: 50.000 ug/l
 RT: 8.685 min Scan# 1126
 Delta R.T. -0.006 min
 Lab File: VY007606.D
 Acq: 23 Feb 2022 18:29



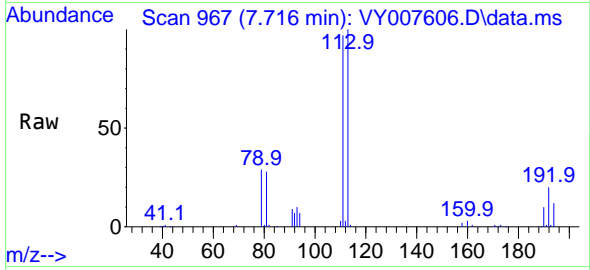
Tgt Ion:114 Resp: 154940
 Ion Ratio Lower Upper
 114 100
 63 18.3 0.0 43.2
 88 14.4 0.0 31.8





#35
 Dibromofluoromethane
 Concen: 50.694 ug/l
 RT: 7.716 min Scan# 90
 Delta R.T. -0.000 min
 Lab File: VY007606.D
 Acq: 23 Feb 2022 18:29

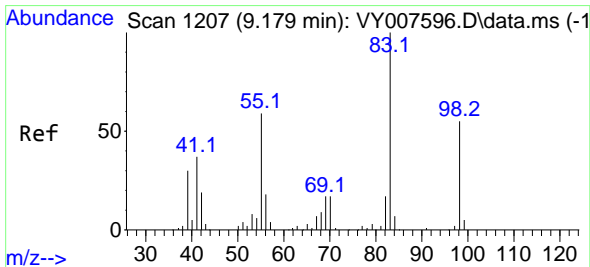
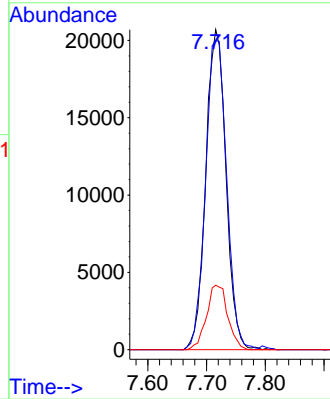
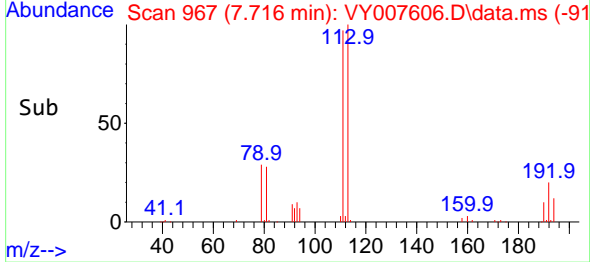
Instrument : MSVOA_Y
 ClientSampleId : D15-6



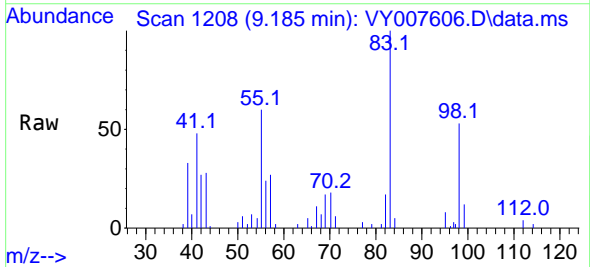
Tgt Ion: 113 Resp: 4956
 Ion Ratio Lower Upper
 113 100
 111 101.3 82.6 124.0
 192 21.1 17.6 26.4

Manual Integrations
APPROVED

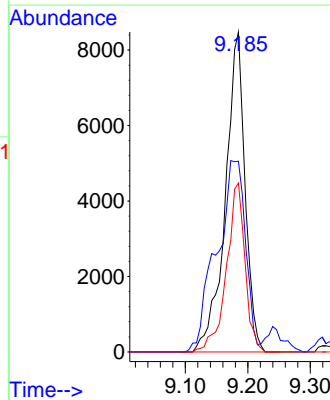
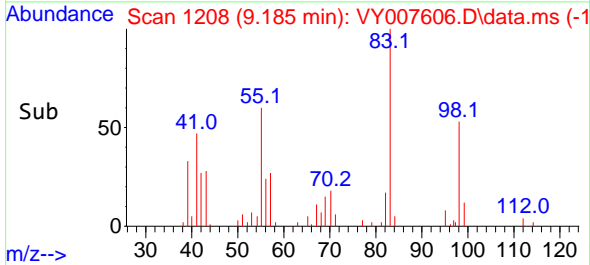
Reviewed By :John Carlone 02/24/2022
 Supervised By :Mahesh Dadoda 02/24/2022

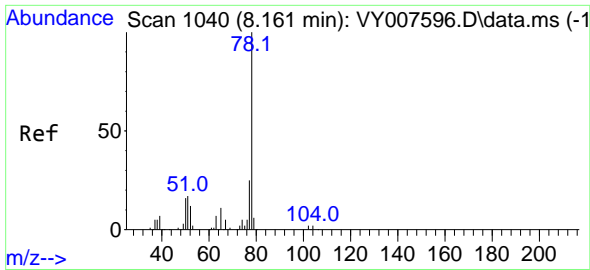


#39
 Methylcyclohexane
 Concen: 9.985 ug/l m
 RT: 9.185 min Scan# 1208
 Delta R.T. 0.006 min
 Lab File: VY007606.D
 Acq: 23 Feb 2022 18:29



Tgt Ion: 83 Resp: 18526
 Ion Ratio Lower Upper
 83 100
 55 59.6 66.5 99.7#
 98 52.8 37.9 56.9





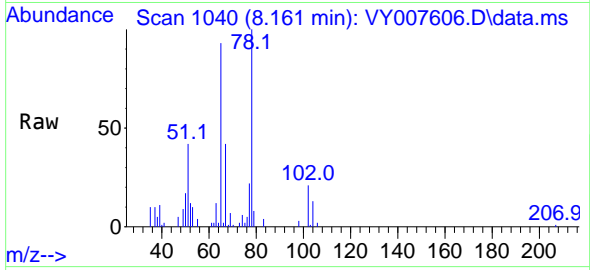
#40
Benzene
Concen: 5.247 ug/l
RT: 8.161 min Scan# 1040
Delta R.T. -0.000 min
Lab File: VY007606.D
Acq: 23 Feb 2022 18:29

Instrument :

MSVOA_Y

ClientSampleId :

D15-6



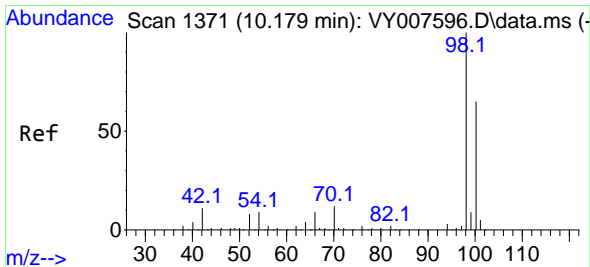
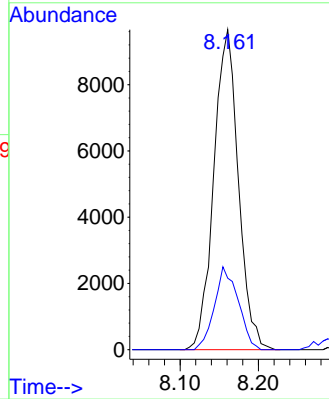
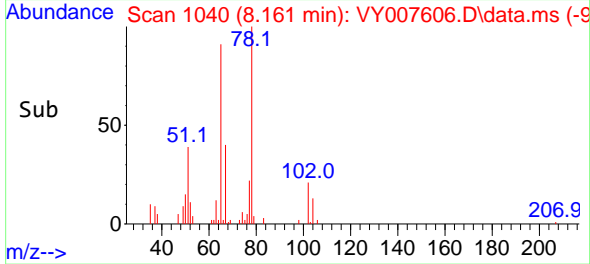
Tgt Ion: 78 Resp: 21090
Ion Ratio Lower Upper
78 100
77 22.3 20.4 30.6

Manual Integrations

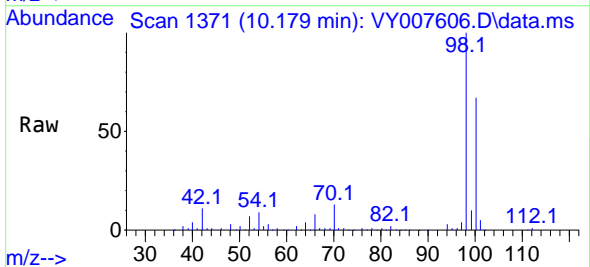
APPROVED

Reviewed By :John Carlone 02/24/2022

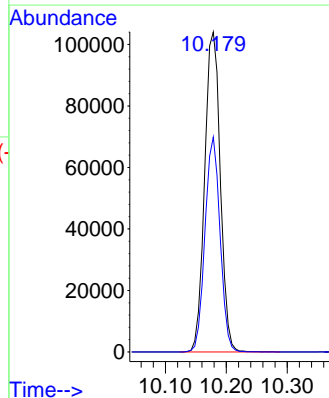
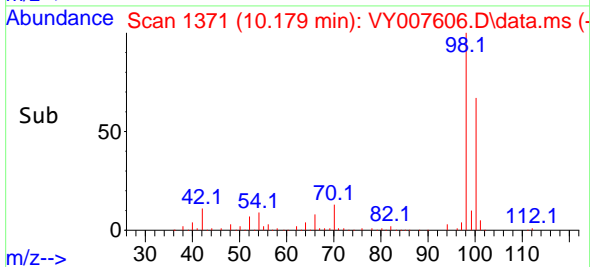
Supervised By :Mahesh Dadoda 02/24/2022

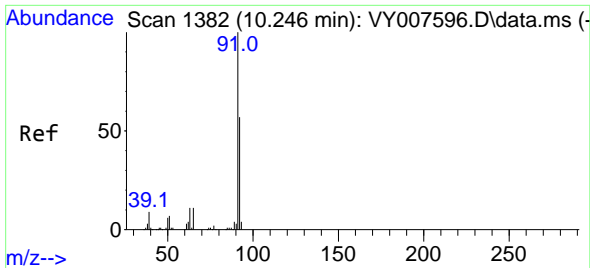


#50
Toluene-d8
Concen: 51.159 ug/l
RT: 10.179 min Scan# 1371
Delta R.T. -0.000 min
Lab File: VY007606.D
Acq: 23 Feb 2022 18:29



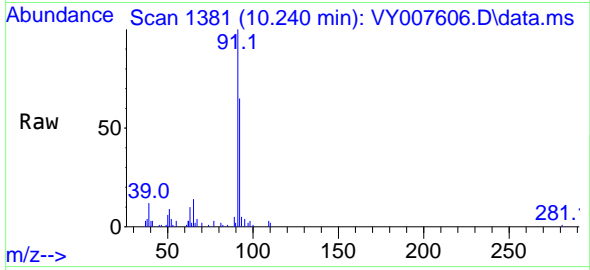
Tgt Ion: 98 Resp: 185391
Ion Ratio Lower Upper
98 100
100 64.8 50.2 75.2





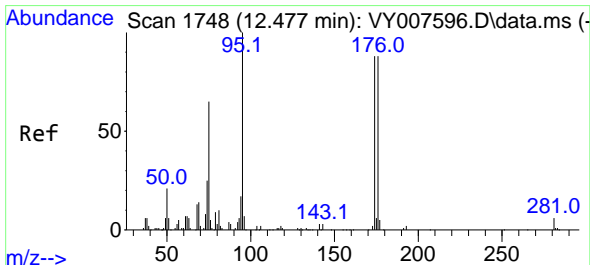
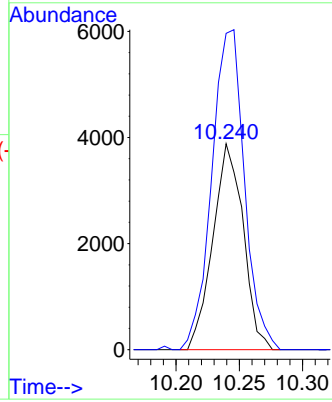
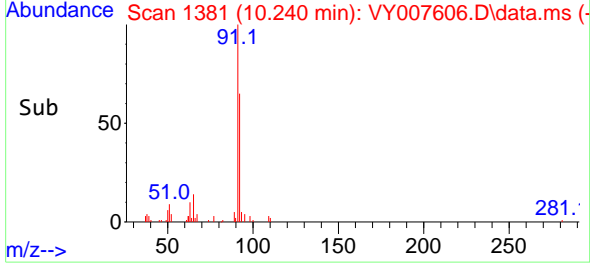
#52
 Toluene
 Concen: 2.360 ug/l
 RT: 10.240 min Scan# 11
 Delta R.T. -0.006 min
 Lab File: VY007606.D
 Acq: 23 Feb 2022 18:29

Instrument : MSVOA_Y
 ClientSampleId : D15-6

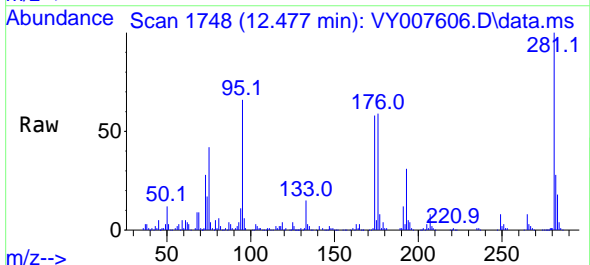


Tgt Ion: 92 Resp: 6470
 Ion Ratio Lower Upper
 92 100
 91 167.8 142.6 213.8

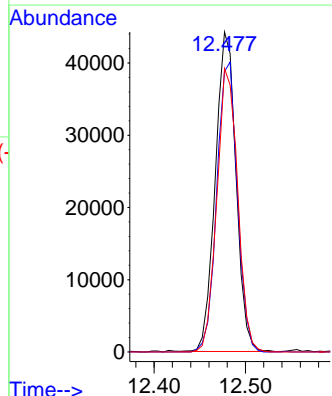
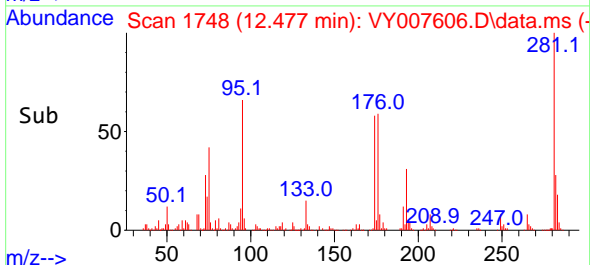
Manual Integrations
APPROVED
 Reviewed By :John Carlone 02/24/2022
 Supervised By :Mahesh Dadoda 02/24/2022

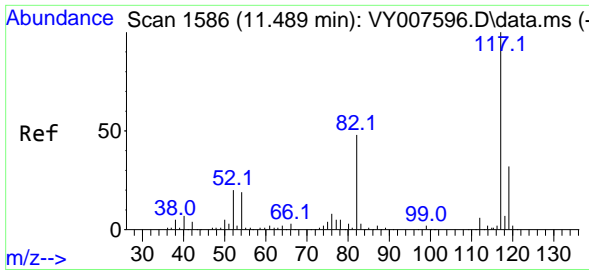


#62
 4-Bromofluorobenzene
 Concen: 56.215 ug/l
 RT: 12.477 min Scan# 1748
 Delta R.T. 0.000 min
 Lab File: VY007606.D
 Acq: 23 Feb 2022 18:29



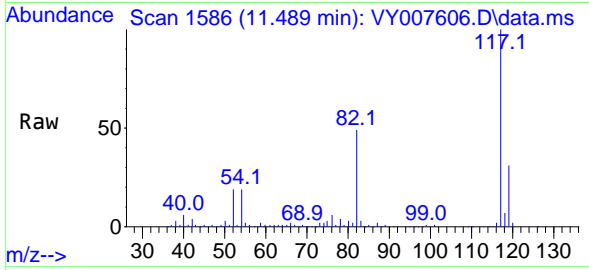
Tgt Ion: 95 Resp: 69493
 Ion Ratio Lower Upper
 95 100
 174 90.1 0.0 177.0
 176 89.2 0.0 175.8





#63
 Chlorobenzene-d5
 Concen: 50.000 ug/l
 RT: 11.489 min Scan# 117
 Delta R.T. 0.000 min
 Lab File: VY007606.D
 Acq: 23 Feb 2022 18:29

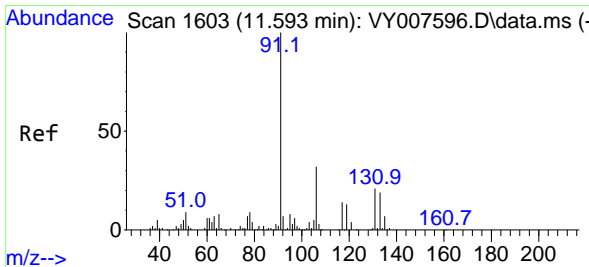
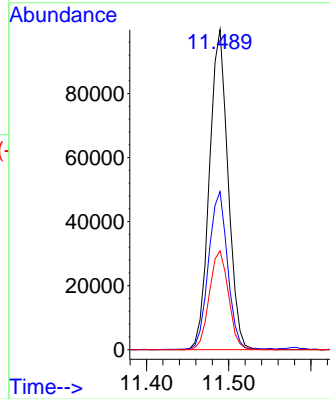
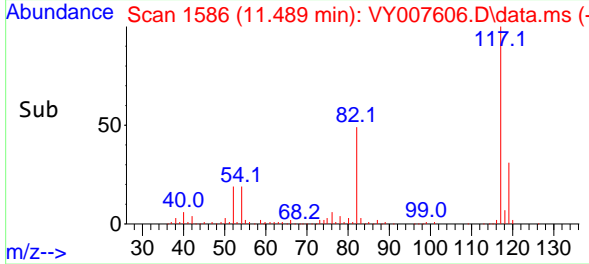
Instrument : MSVOA_Y
 ClientSampleId : D15-6



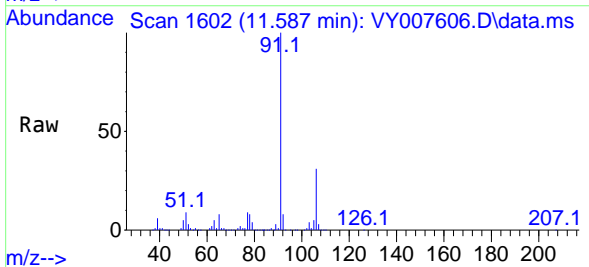
Tgt Ion:117 Resp: 15698
 Ion Ratio Lower Upper
 117 100
 82 49.2 43.0 64.4
 119 30.9 25.4 38.0

Manual Integrations
 APPROVED

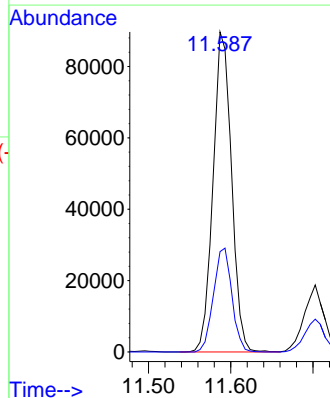
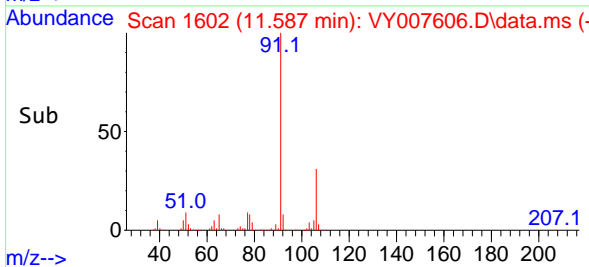
Reviewed By :John Carlone 02/24/2022
 Supervised By :Mahesh Dadoda 02/24/2022

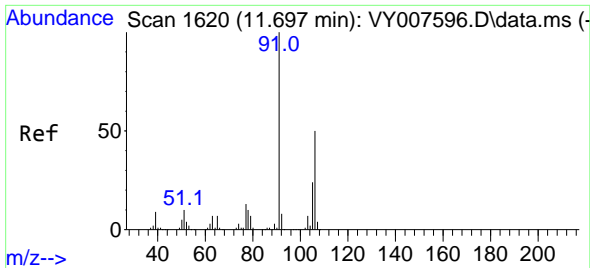


#67
 Ethyl Benzene
 Concen: 24.396 ug/l
 RT: 11.587 min Scan# 1602
 Delta R.T. -0.006 min
 Lab File: VY007606.D
 Acq: 23 Feb 2022 18:29



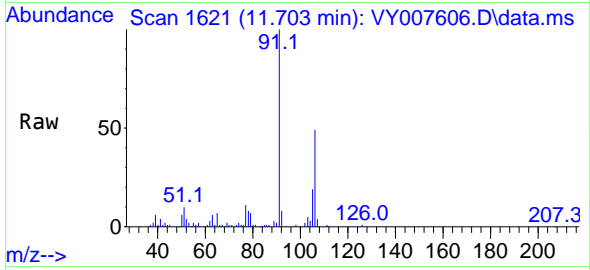
Tgt Ion: 91 Resp: 140009
 Ion Ratio Lower Upper
 91 100
 106 31.3 24.5 36.7





#68
 m/p-Xylenes
 Concen: 6.804 ug/l
 RT: 11.703 min Scan# 10
 Delta R.T. 0.006 min
 Lab File: VY007606.D
 Acq: 23 Feb 2022 18:29

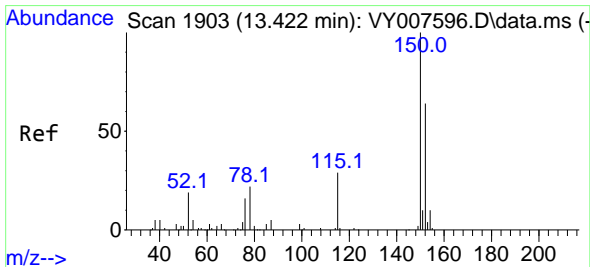
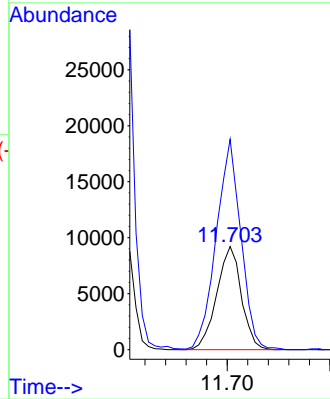
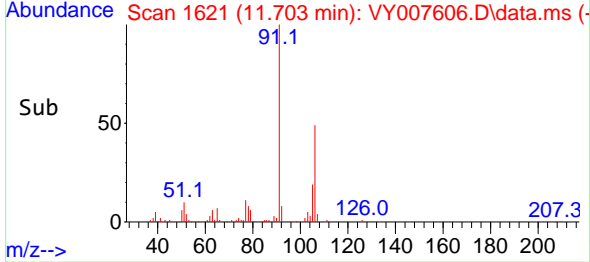
Instrument :
 MSVOA_Y
 ClientSampleId :
 D15-6



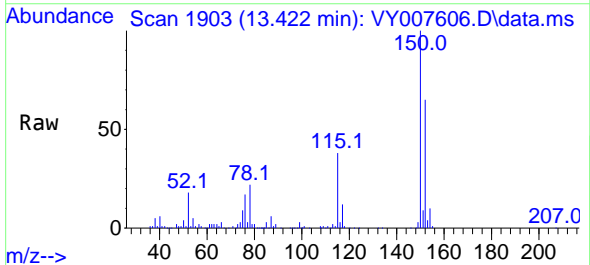
Tgt Ion:106 Resp: 1529
 Ion Ratio Lower Upper
 106 100
 91 204.7 166.6 249.8

Manual Integrations
 APPROVED

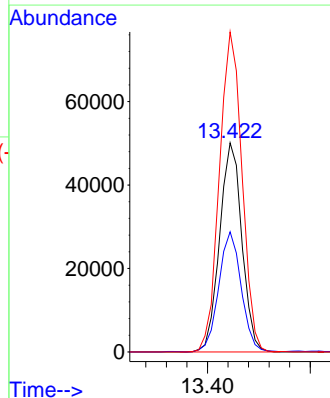
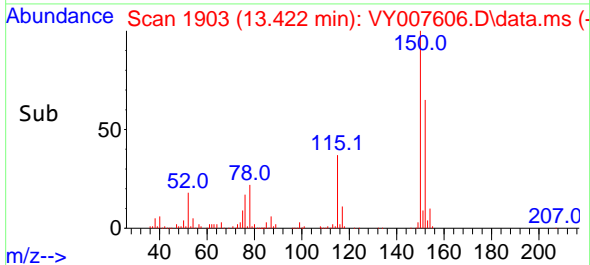
Reviewed By :John Carlone 02/24/2022
 Supervised By :Mahesh Dadoda 02/24/2022

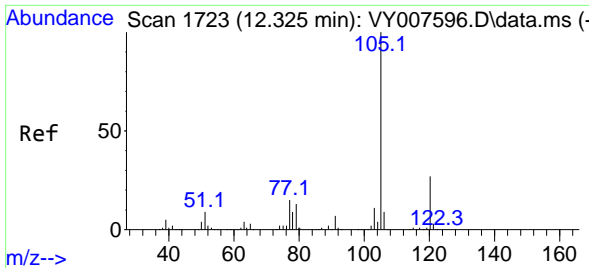


#72
 1,4-Dichlorobenzene-d4
 Concen: 50.000 ug/l
 RT: 13.422 min Scan# 1903
 Delta R.T. -0.000 min
 Lab File: VY007606.D
 Acq: 23 Feb 2022 18:29



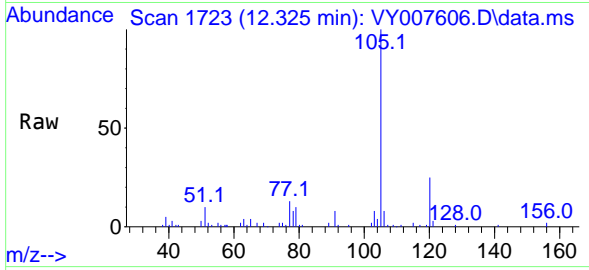
Tgt Ion:152 Resp: 75154
 Ion Ratio Lower Upper
 152 100
 115 58.2 28.2 84.7
 150 155.9 0.0 347.6





#73
 Isopropylbenzene
 Concen: 3.515 ug/l
 RT: 12.325 min Scan# 1723
 Delta R.T. -0.000 min
 Lab File: VY007606.D
 Acq: 23 Feb 2022 18:29

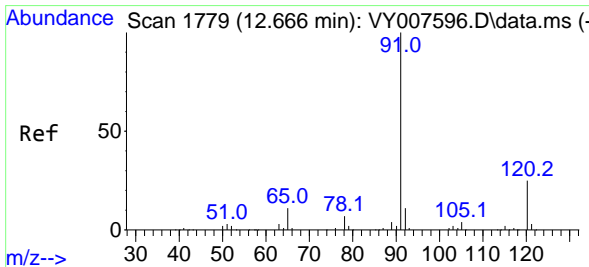
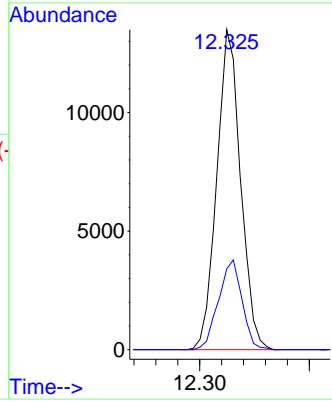
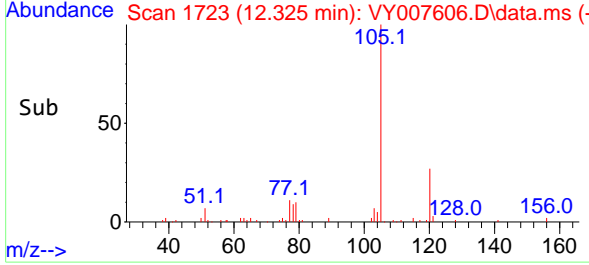
Instrument : MSVOA_Y
 ClientSampleId : D15-6



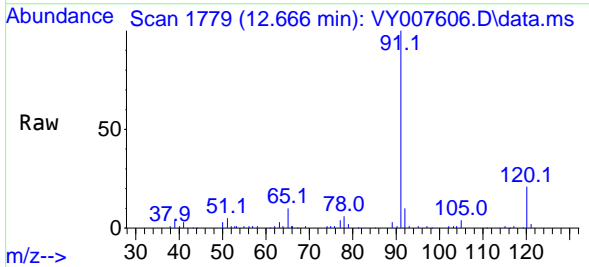
Tgt Ion:105 Resp: 20350
 Ion Ratio Lower Upper
 105 100
 120 27.7 13.4 40.2

Manual Integrations
 APPROVED

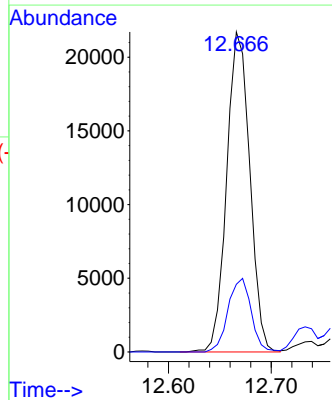
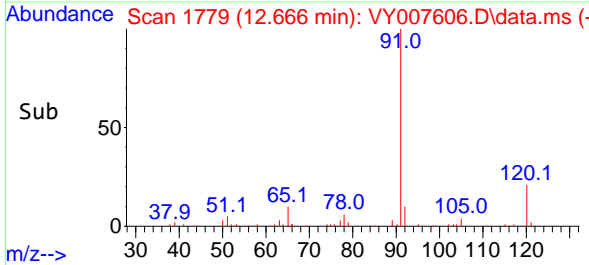
Reviewed By :John Carlone 02/24/2022
 Supervised By :Mahesh Dadoda 02/24/2022

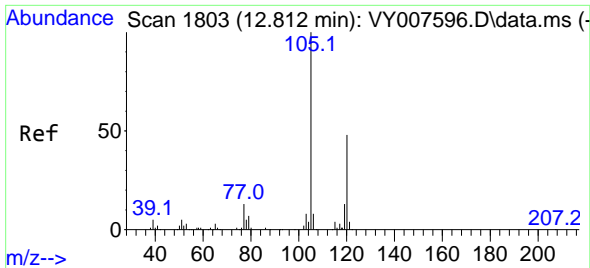


#78
 n-propylbenzene
 Concen: 5.072 ug/l
 RT: 12.666 min Scan# 1779
 Delta R.T. -0.000 min
 Lab File: VY007606.D
 Acq: 23 Feb 2022 18:29



Tgt Ion: 91 Resp: 33913
 Ion Ratio Lower Upper
 91 100
 120 23.0 11.3 33.9





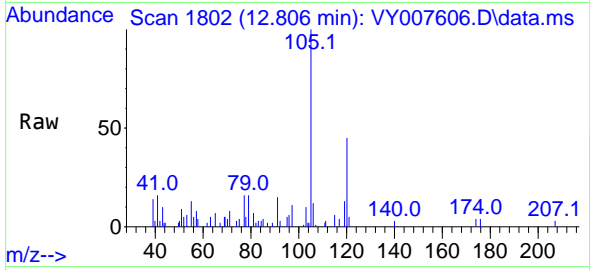
#80
 1,3,5-Trimethylbenzene
 Concen: 1.134 ug/l
 RT: 12.806 min Scan# 1803
 Delta R.T. -0.006 min
 Lab File: VY007606.D
 Acq: 23 Feb 2022 18:29

Instrument :

MSVOA_Y

ClientSampleId :

D15-6



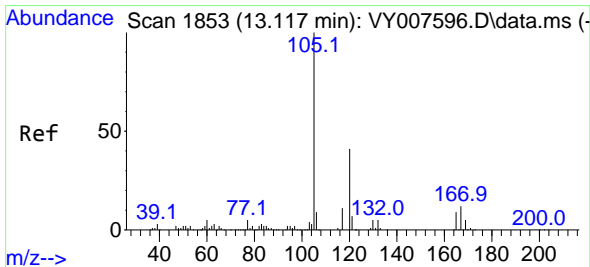
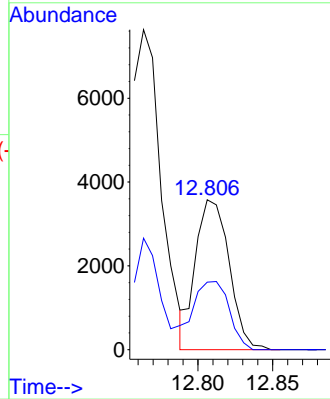
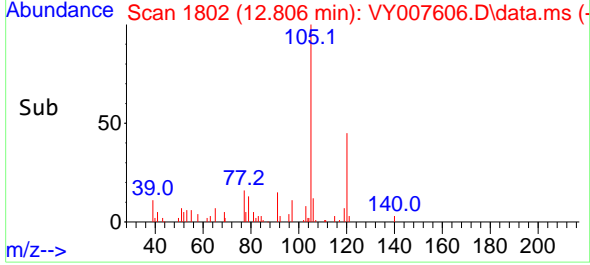
Tgt Ion:105 Resp: 5584
 Ion Ratio Lower Upper
 105 100
 120 47.7 24.4 73.4

Manual Integrations

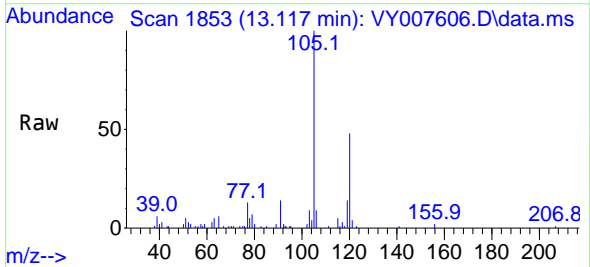
APPROVED

Reviewed By :John Carlone 02/24/2022

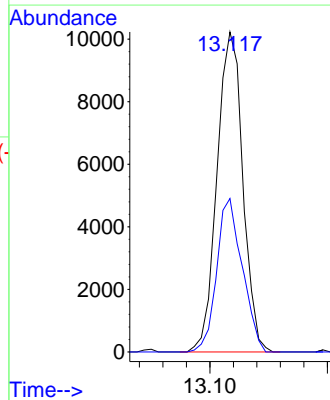
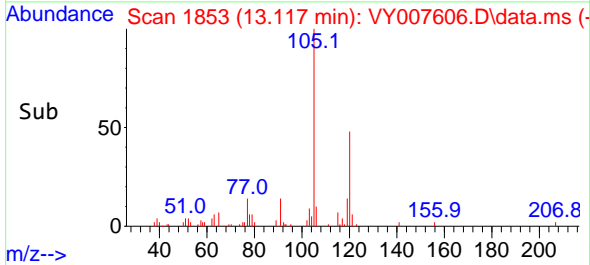
Supervised By :Mahesh Dadoda 02/24/2022

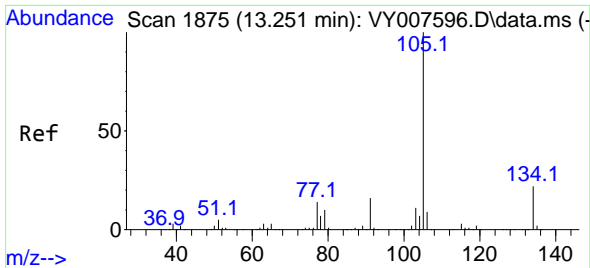


#84
 1,2,4-Trimethylbenzene
 Concen: 3.227 ug/l
 RT: 13.117 min Scan# 1853
 Delta R.T. 0.000 min
 Lab File: VY007606.D
 Acq: 23 Feb 2022 18:29



Tgt Ion:105 Resp: 15578
 Ion Ratio Lower Upper
 105 100
 120 47.6 22.3 66.9





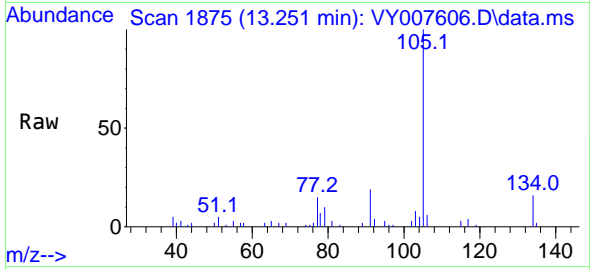
#85
 sec-Butylbenzene
 Concen: 1.339 ug/l
 RT: 13.251 min Scan# 1875
 Delta R.T. 0.000 min
 Lab File: VY007606.D
 Acq: 23 Feb 2022 18:29

Instrument :

MSVOA_Y

ClientSampleId :

D15-6



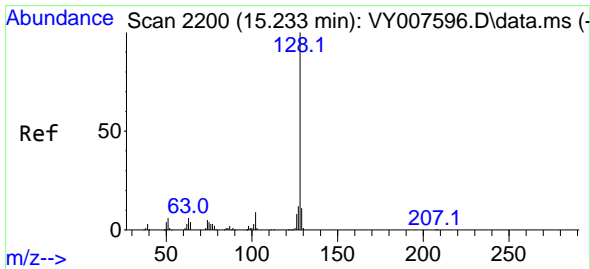
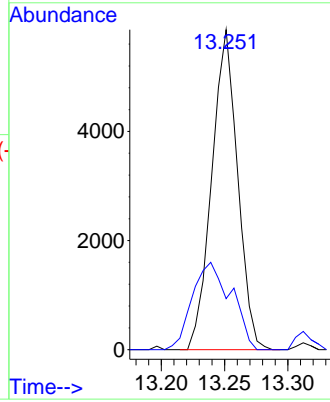
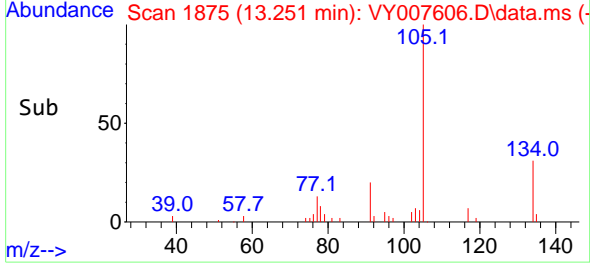
Tgt Ion:105 Resp: 8329
 Ion Ratio Lower Upper
 105 100
 134 41.2 10.2 30.4

Manual Integrations

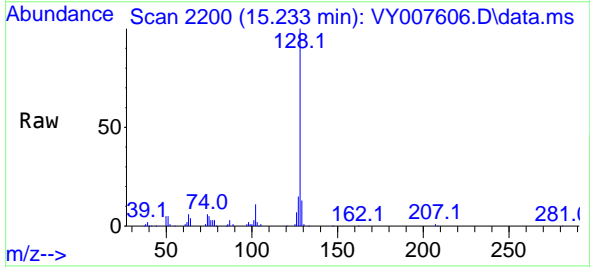
APPROVED

Reviewed By :John Carlone 02/24/2022

Supervised By :Mahesh Dadoda 02/24/2022



#95
 Naphthalene
 Concen: 13.383 ug/l
 RT: 15.233 min Scan# 2200
 Delta R.T. -0.000 min
 Lab File: VY007606.D
 Acq: 23 Feb 2022 18:29



Tgt Ion:128 Resp: 51005
 Ion Ratio Lower Upper
 128 100
 127 12.9 11.0 16.4
 129 11.9 8.4 12.6

