

Data Path : Z:\voasrv\HPCHEM1\MSVOA\_Y\Data\VY022323\  
 Data File : VY012697.D  
 Acq On : 23 Feb 2023 10:30  
 Operator : KP/MD  
 Sample : VY0223SBL01  
 Misc : 5.00g/5.0mL/MSVOA\_Y/SOIL  
 ALS Vial : 4 Sample Multiplier: 1

Instrument :  
 MSVOA\_Y  
 ClientSampleId :  
 VY0223SBL01

Integration Parameters: RTEINT.P  
 Integrator: RTE  
 Smoothing : ON Filtering: 5  
 Sampling : 1 Min Area: 3 % of largest Peak  
 Start Thrs: 0.2 Max Peaks: 100  
 Stop Thrs : 0 Peak Location: TOP

If leading or trailing edge < 100 prefer < Baseline drop else tangent >  
 Peak separation: 5

Method : Z:\voasrv\HPCHEM1\MSVOA\_Y\methods\82Y022123S.M  
 Title : SW846 8260

Signal : TIC: VY012697.D\data.ms

peak #	R.T. min	first scan	max scan	last scan	PK TY	peak height	corr. area	corr. % max.	% of total
1	4.716	465	475	489	rVB2	7023	22344	2.92%	0.514%
2	6.978	835	846	860	rBV	18924	57727	7.55%	1.328%
3	7.722	954	968	973	rBV	109802	263236	34.45%	6.054%
4	7.789	973	979	992	rVB	162417	370725	48.52%	8.526%
5	8.136	1023	1036	1048	rBV2	111695	284075	37.18%	6.534%
6	8.691	1116	1127	1141	rBV	282248	555229	72.66%	12.770%
7	10.179	1363	1371	1386	rBV	455120	764099	100.00%	17.574%
8	10.581	1428	1437	1445	rBV	41874	73598	9.63%	1.693%
9	10.947	1490	1497	1506	rBV2	10552	18669	2.44%	0.429%
10	11.319	1552	1558	1564	rVB2	11510	18302	2.40%	0.421%
11	11.490	1578	1586	1598	rBV	448902	716405	93.76%	16.477%
12	12.483	1742	1749	1758	rBV2	352496	559647	73.24%	12.872%
13	13.428	1897	1904	1913	rVB	423843	643889	84.27%	14.809%

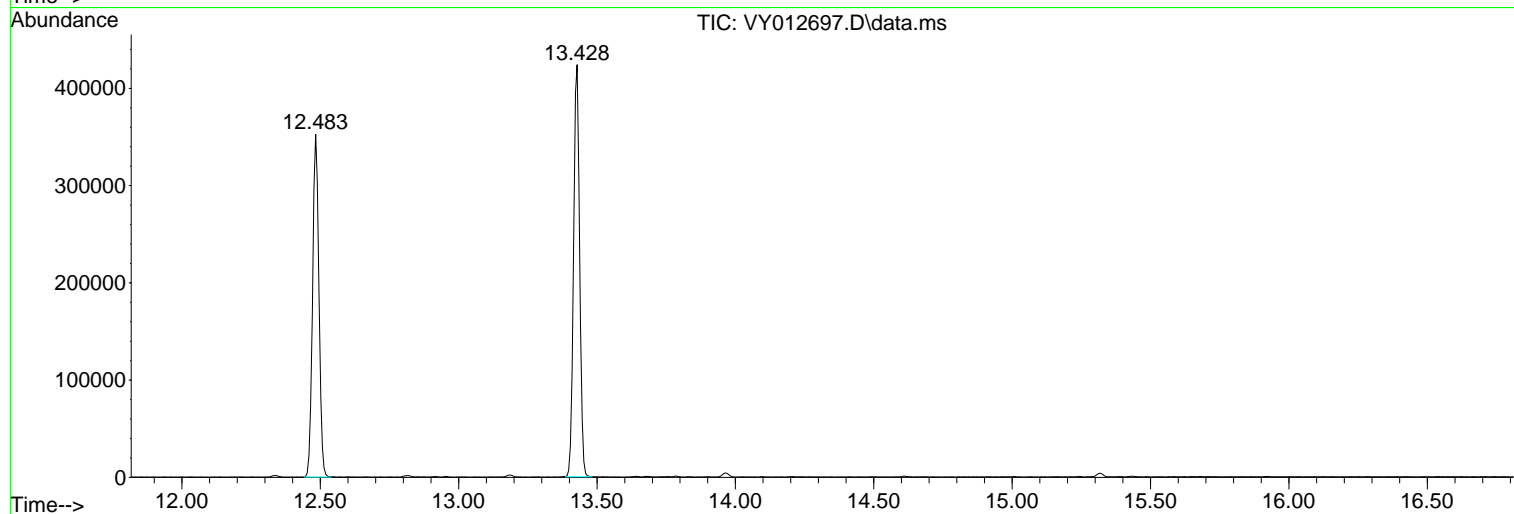
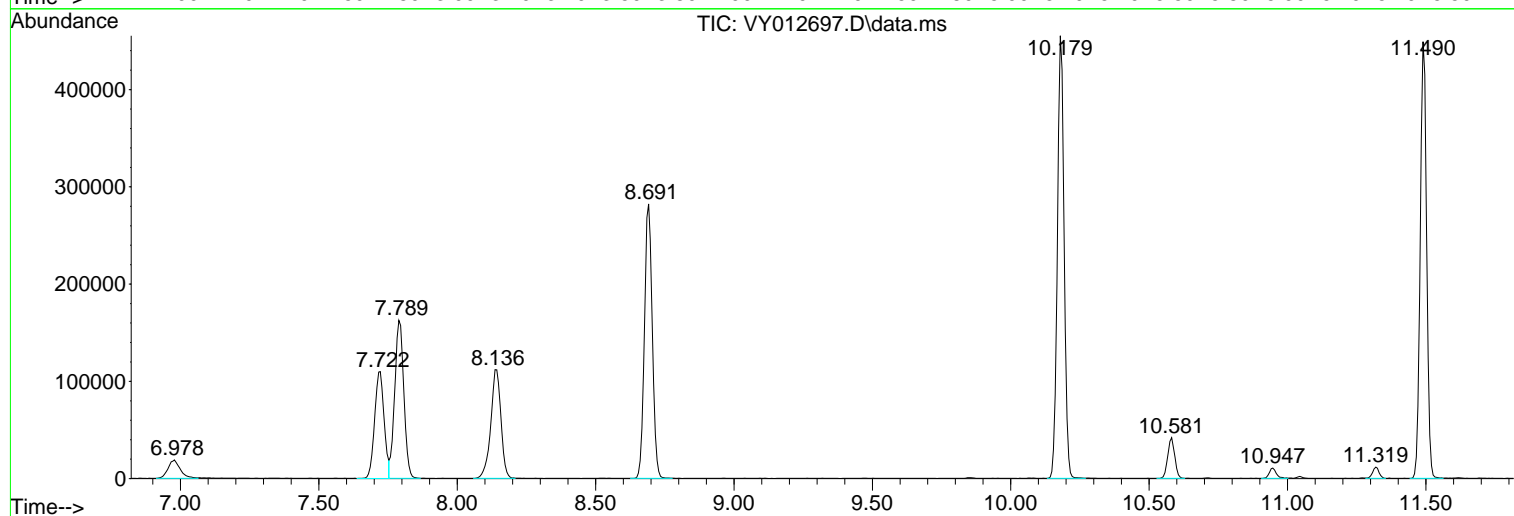
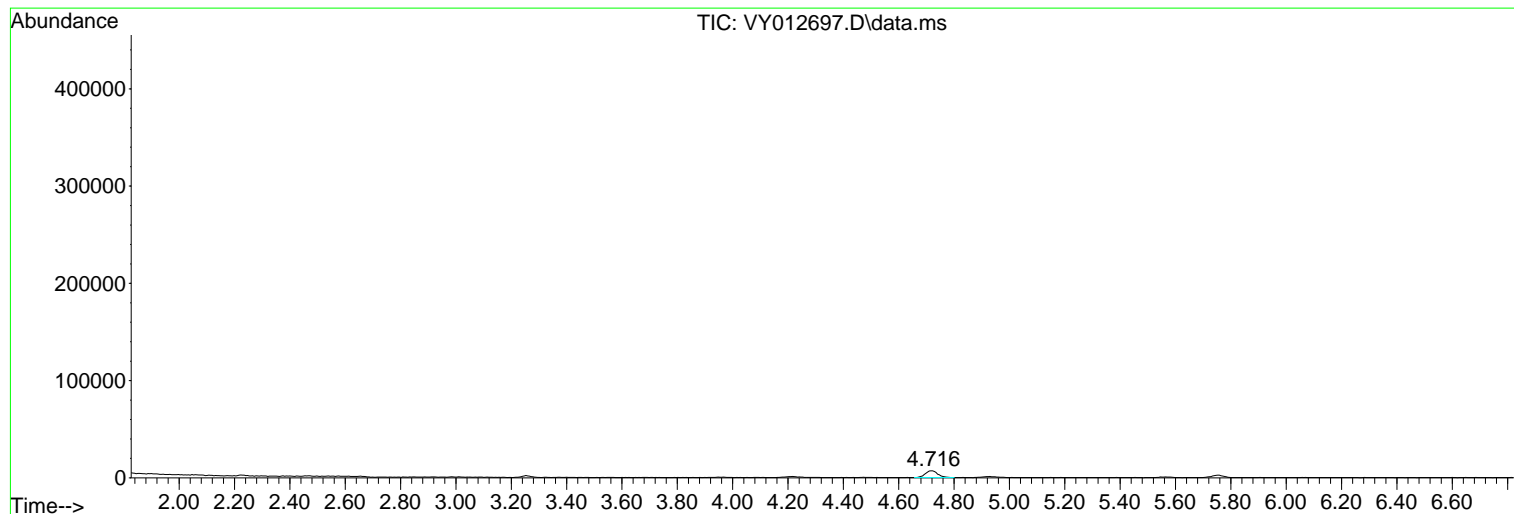
Sum of corrected areas: 4347945

Data Path : Z:\voasrv\HPCHEM1\MSVOA\_Y\Data\VY022323\  
Data File : VY012697.D  
Acq On : 23 Feb 2023 10:30  
Operator : KP/MD  
Sample : VY0223SBL01  
Misc : 5.00g/5.0mL/MSVOA\_Y/SOIL  
ALS Vial : 4 Sample Multiplier: 1

Instrument :  
MSVOA\_Y  
ClientSampleId :  
VY0223SBL01

Quant Method : Z:\voasrv\HPCHEM1\MSVOA\_Y\methods\82Y022123S.M  
Quant Title : SW846 8260

TIC Library : C:\Database\NIST0.L  
TIC Integration Parameters: LSCINT.P



Library Search Compound Report

Data Path : Z:\voasrv\HPCHEM1\MSVOA\_Y\Data\VY022323\  
Data File : VY012697.D  
Acq On : 23 Feb 2023 10:30  
Operator : KP/MD  
Sample : VY0223SBL01  
Misc : 5.00g/5.0mL/MSVOA\_Y/SOIL  
ALS Vial : 4 Sample Multiplier: 1

Instrument :  
MSVOA\_Y  
ClientSampleId :  
VY0223SBL01

Quant Method : Z:\voasrv\HPCHEM1\MSVOA\_Y\methods\82Y022123S.M  
Quant Title : SW846 8260

TIC Library : C:\Database\NIST20.L  
TIC Integration Parameters: LSCINT.P

No Library Search Compounds Detected

\*\*\*\*\*

Data Path : Z:\voasrv\HPCHEM1\MSVOA\_Y\Data\VY022323\  
Data File : VY012697.D  
Acq On : 23 Feb 2023 10:30  
Operator : KP/MD  
Sample : VY0223SBL01  
Misc : 5.00g/5.0mL/MSVOA\_Y/SOIL  
ALS Vial : 4 Sample Multiplier: 1

Instrument :  
MSVOA\_Y  
ClientSampleId :  
VY0223SBL01

Quant Method : Z:\voasrv\HPCHEM1\MSVOA\_Y\methods\82Y022123S.M  
Quant Title : SW846 8260

TIC Library : C:\Database\NIST0.L  
TIC Integration Parameters: LSCINT.P

TIC Top Hit name	RT	EstConc	Units	Response	#	RT	Resp	Conc
------------------	----	---------	-------	----------	---	----	------	------

---