

Data Path : Z:\voasrv\HPCHEM1\MSVOA_Y\Data\VY022423\
 Data File : VY012717.D
 Acq On : 24 Feb 2023 12:38
 Operator : KP/MD
 Sample : 01639-01
 Misc : 5.02g/5.0mL/MSVOA_Y/SOIL
 ALS Vial : 7 Sample Multiplier: 1

Instrument :
 MSVOA_Y
 ClientSampleId :
 TR-05-02212023

Quant Time: Feb 24 12:55:40 2023
 Quant Method : Z:\voasrv\HPCHEM1\MSVOA_Y\methods\82Y022123S.M
 Quant Title : SW846 8260
 QLast Update : Wed Feb 22 01:21:05 2023
 Response via : Initial Calibration

Compound	R.T.	QIon	Response	Conc	Units	Dev(Min)

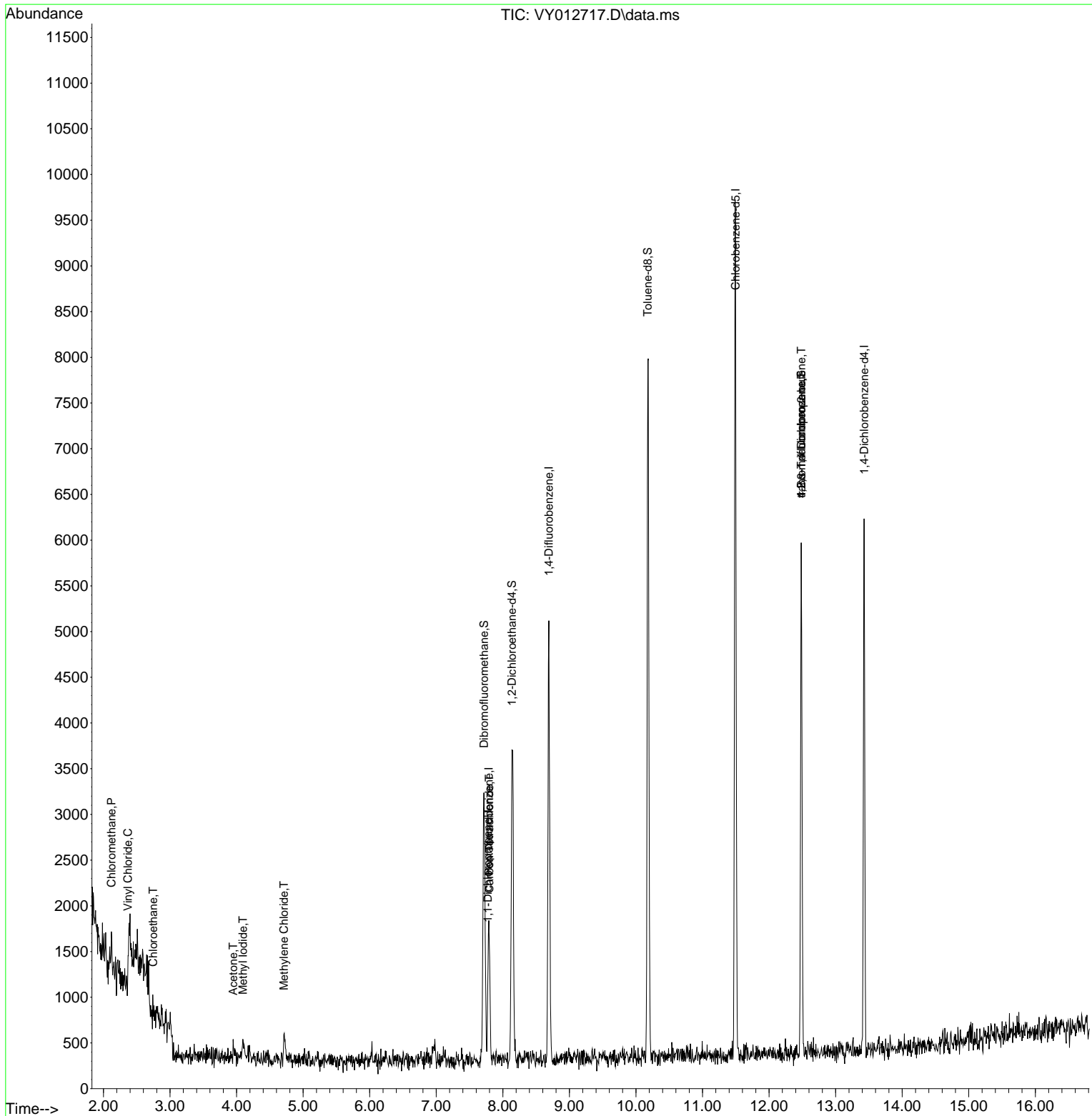
Internal Standards						
1) Pentafluorobenzene	7.789	168	1556	50.000	ug/l	0.00
34) 1,4-Difluorobenzene	8.691	114	4280	50.000	ug/l	0.00
63) Chlorobenzene-d5	11.495	117	5201	50.000	ug/l	0.00
72) 1,4-Dichlorobenzene-d4	13.428	152	1621	50.000	ug/l	0.00
System Monitoring Compounds						
33) 1,2-Dichloroethane-d4	8.136	65	2798	152.255	ug/l	0.00
Spiked Amount	50.000	Range 50 - 163	Recovery	=	304.500%#	
35) Dibromofluoromethane	7.716	113	2134	73.819	ug/l	0.00
Spiked Amount	50.000	Range 54 - 147	Recovery	=	147.640%#	
50) Toluene-d8	10.179	98	5506	50.839	ug/l	0.00
Spiked Amount	50.000	Range 49 - 140	Recovery	=	101.680%	
62) 4-Bromofluorobenzene	12.483	95	1876	54.129	ug/l	0.00
Spiked Amount	50.000	Range 25 - 144	Recovery	=	108.260%	
Target Compounds						
						Qvalue
3) Chloromethane	2.119	50	356	16.165	ug/l	89
4) Vinyl Chloride	2.369	62	29	1.641	ug/l #	43
6) Chloroethane	2.747	64	156	13.864	ug/l #	41
10) Methyl Iodide	4.094	142	337	15.116	ug/l #	53
16) Acetone	3.948	43	118	19.678	ug/l #	46
20) Methylene Chloride	4.710	84	203	5.515	ug/l #	30
36) 1,1-Dichloropropene	7.777	75	64	1.397	ug/l #	42
38) Carbon Tetrachloride	7.795	117	168	3.546	ug/l #	13
76) 1,2,3-Trichloropropane	12.483	75	930	46.020	ug/l #	100
81) trans-1,4-Dichloro-2-b...	12.483	75	930	97.494	ug/l #	9

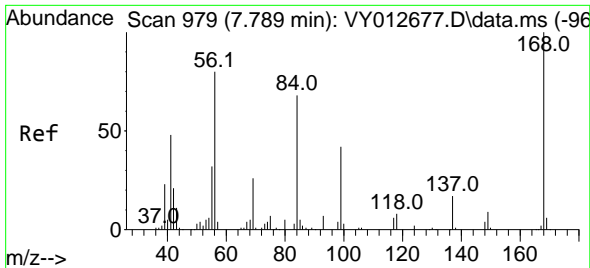
(#) = qualifier out of range (m) = manual integration (+) = signals summed

Data Path : Z:\voasrv\HPCHEM1\MSVOA_Y\Data\VY022423\
 Data File : VY012717.D
 Acq On : 24 Feb 2023 12:38
 Operator : KP/MD
 Sample : 01639-01
 Misc : 5.02g/5.0mL/MSVOA_Y/SOIL
 ALS Vial : 7 Sample Multiplier: 1

Instrument :
 MSVOA_Y
 ClientSampleId :
 TR-05-02212023

Quant Time: Feb 24 12:55:40 2023
 Quant Method : Z:\voasrv\HPCHEM1\MSVOA_Y\methods\82Y022123S.M
 Quant Title : SW846 8260
 QLast Update : Wed Feb 22 01:21:05 2023
 Response via : Initial Calibration

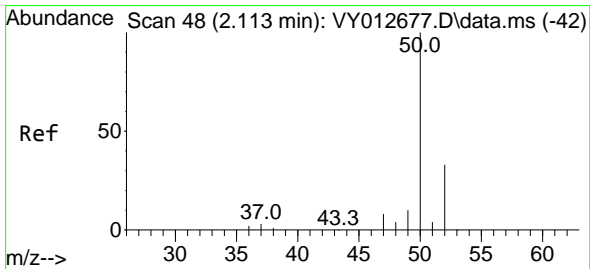
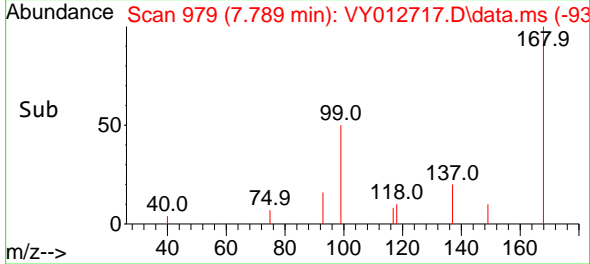
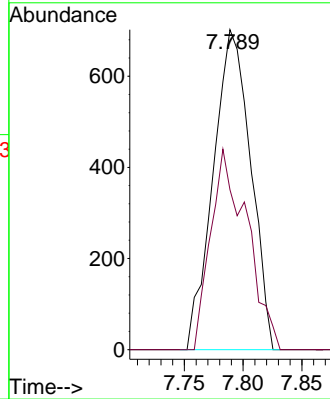
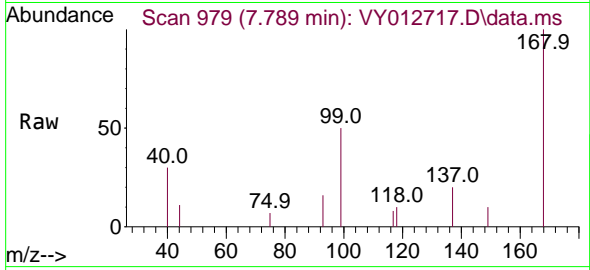




#1
 Pentafluorobenzene
 Concen: 50.000 ug/l
 RT: 7.789 min Scan# 91
 Delta R.T. -0.000 min
 Lab File: VY012717.D
 Acq: 24 Feb 2023 12:38

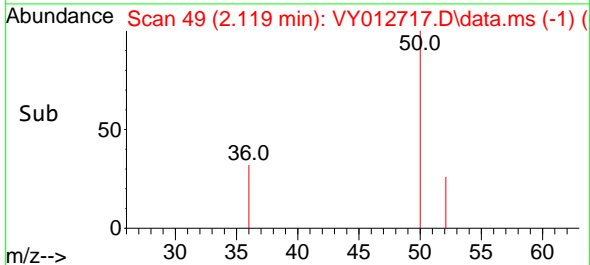
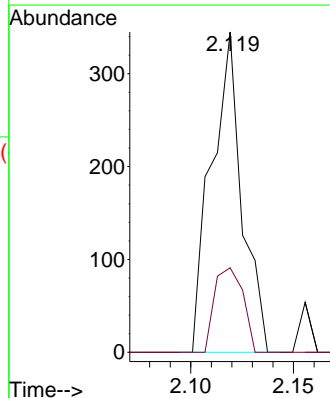
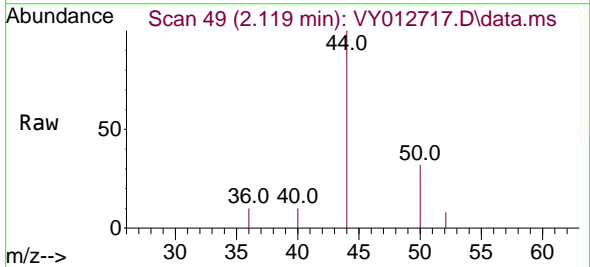
Instrument :
 MSVOA_Y
 ClientSampleId :
 TR-05-02212023

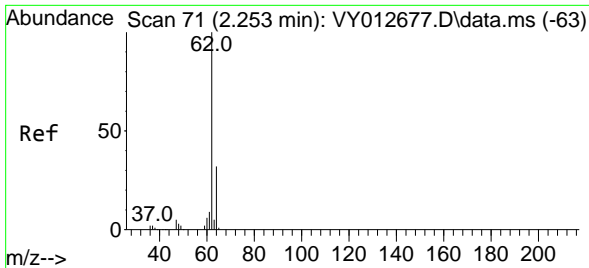
Tgt Ion:168 Resp: 1556
 Ion Ratio Lower Upper
 168 100
 99 50.0 45.4 68.2



#3
 Chloromethane
 Concen: 16.165 ug/l
 RT: 2.119 min Scan# 49
 Delta R.T. 0.006 min
 Lab File: VY012717.D
 Acq: 24 Feb 2023 12:38

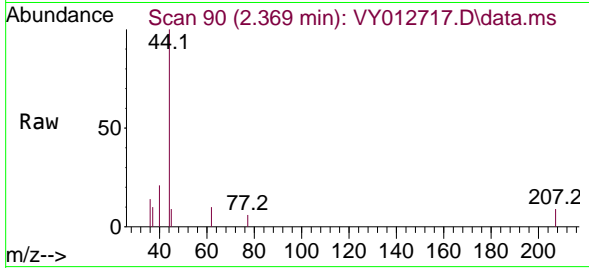
Tgt Ion: 50 Resp: 356
 Ion Ratio Lower Upper
 50 100
 52 26.4 26.1 39.1



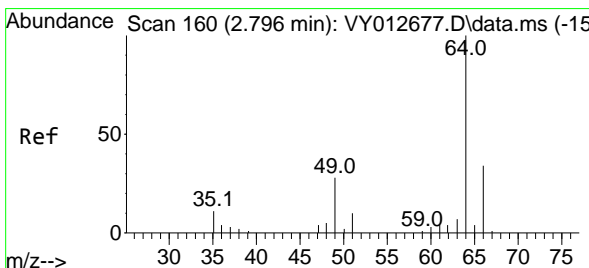
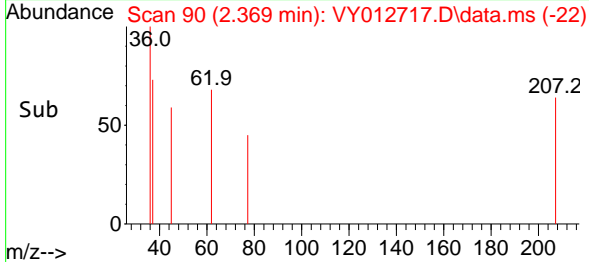
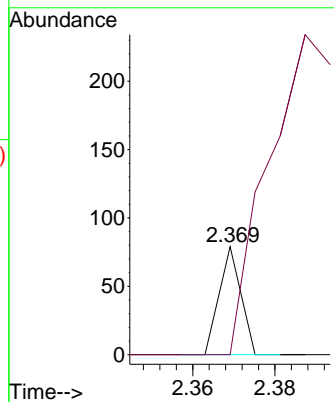


#4
 Vinyl Chloride
 Concen: 1.641 ug/l
 RT: 2.369 min Scan# 90
 Delta R.T. 0.116 min
 Lab File: VY012717.D
 Acq: 24 Feb 2023 12:38

Instrument :
 MSVOA_Y
 ClientSampleId :
 TR-05-02212023

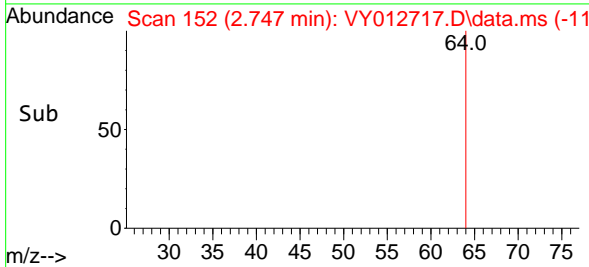
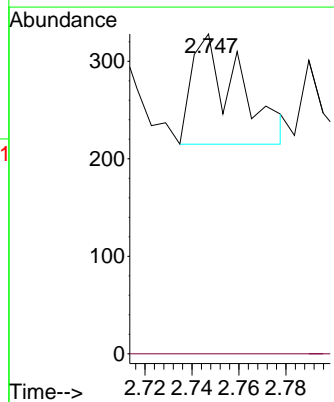
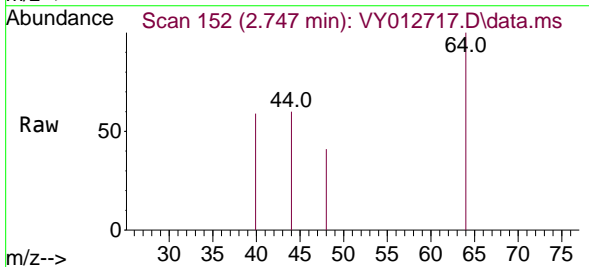


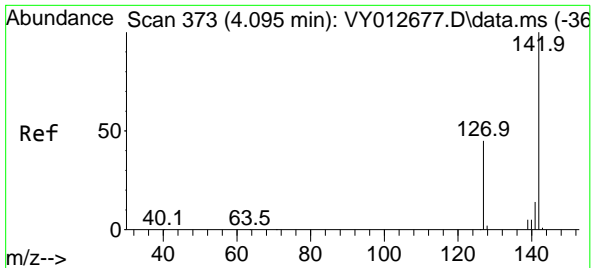
Tgt Ion: 62 Resp: 29
 Ion Ratio Lower Upper
 62 100
 64 0.0 25.4 38.2#



#6
 Chloroethane
 Concen: 13.864 ug/l
 RT: 2.747 min Scan# 152
 Delta R.T. -0.049 min
 Lab File: VY012717.D
 Acq: 24 Feb 2023 12:38

Tgt Ion: 64 Resp: 156
 Ion Ratio Lower Upper
 64 100
 66 0.0 27.1 40.7#

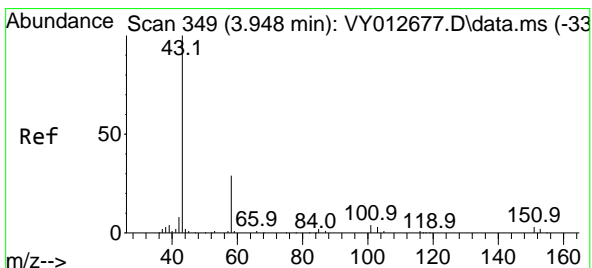
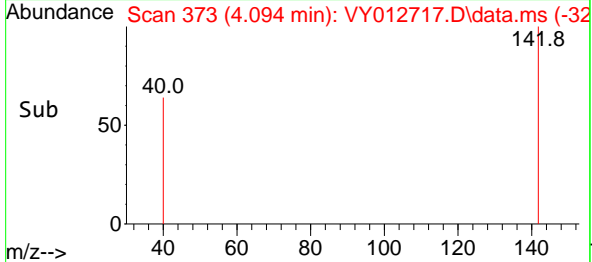
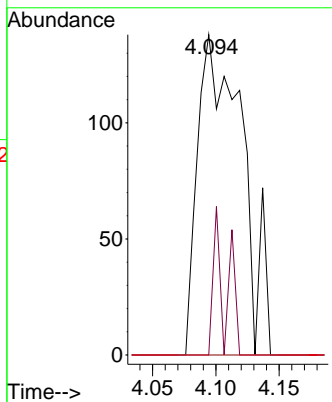
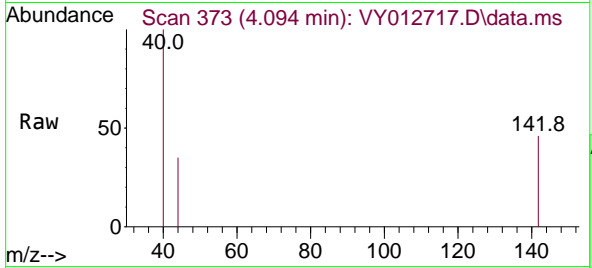




#10
 Methyl Iodide
 Concen: 15.116 ug/l
 RT: 4.094 min Scan# 31
 Delta R.T. -0.000 min
 Lab File: VY012717.D
 Acq: 24 Feb 2023 12:38

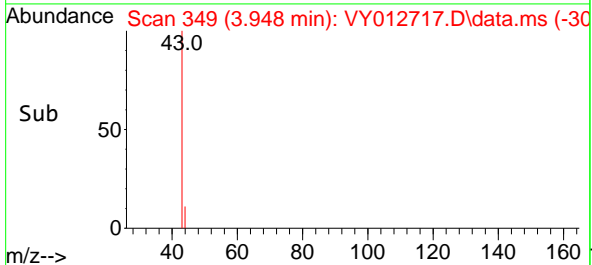
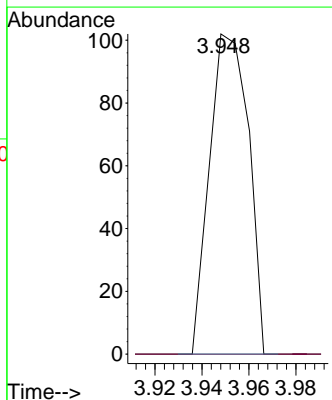
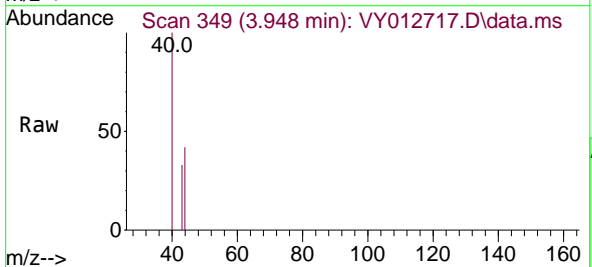
Instrument :
 MSVOA_Y
 ClientSampleId :
 TR-05-02212023

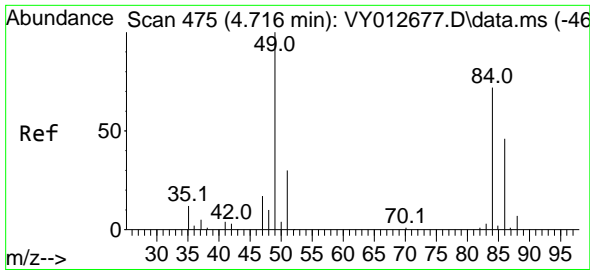
Tgt Ion	Ratio	Lower	Upper
142	100		
127	12.8	37.3	55.9#
141	0.0	11.6	17.4#



#16
 Acetone
 Concen: 19.678 ug/l
 RT: 3.948 min Scan# 349
 Delta R.T. -0.000 min
 Lab File: VY012717.D
 Acq: 24 Feb 2023 12:38

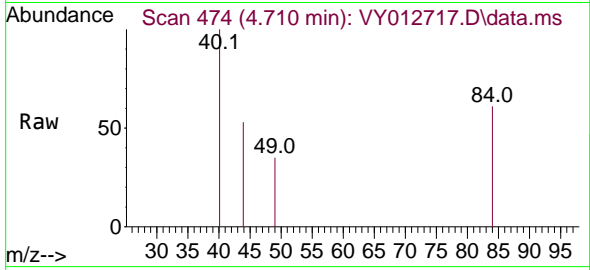
Tgt Ion	Ratio	Lower	Upper
43	100		
58	0.0	23.3	34.9#





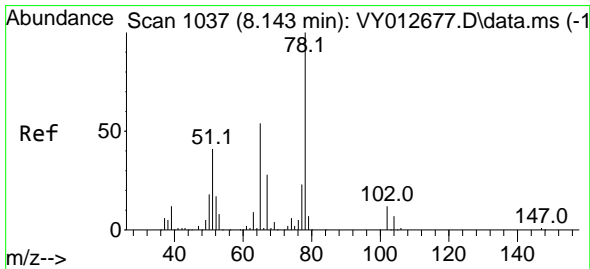
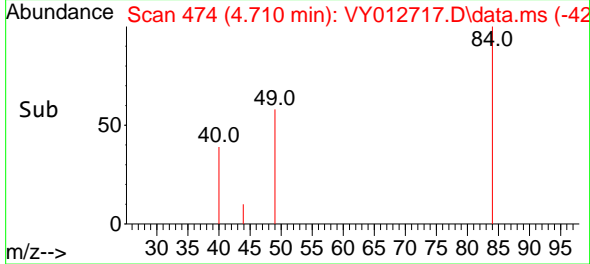
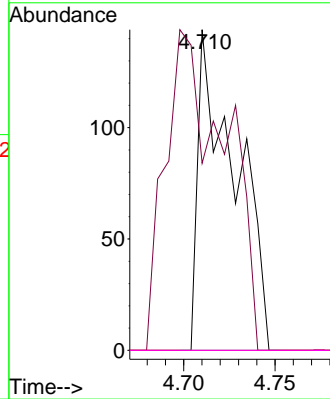
#20
 Methylene Chloride
 Concen: 5.515 ug/l
 RT: 4.710 min Scan# 41
 Delta R.T. -0.006 min
 Lab File: VY012717.D
 Acq: 24 Feb 2023 12:38

Instrument :
 MSVOA_Y
 ClientSampleId :
 TR-05-02212023



Tgt Ion: 84 Resp: 203

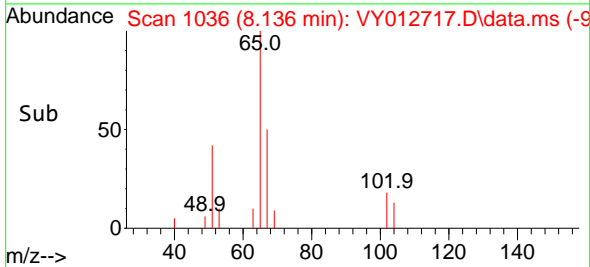
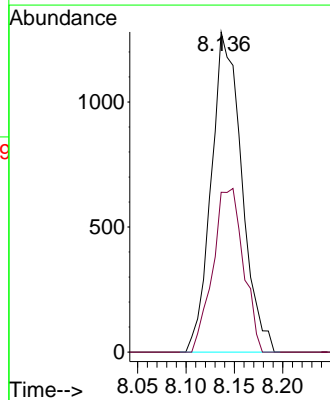
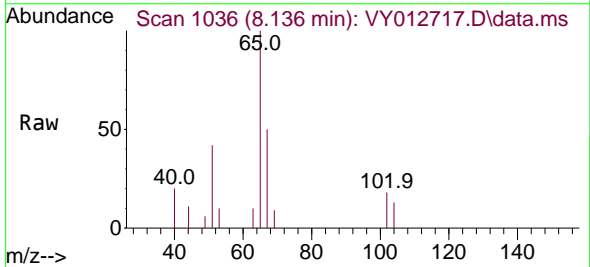
Ion	Ratio	Lower	Upper
84	100		
49	58.3	111.1	166.7#
51	0.0	33.5	50.3#
86	0.0	50.8	76.2#

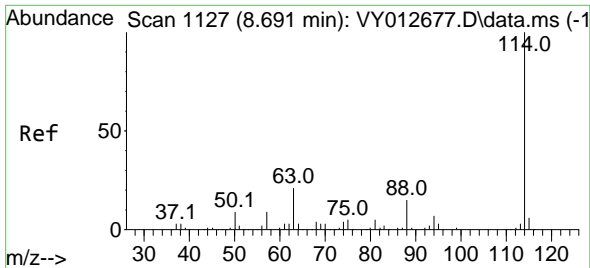


#33
 1,2-Dichloroethane-d4
 Concen: 152.255 ug/l
 RT: 8.136 min Scan# 1036
 Delta R.T. -0.007 min
 Lab File: VY012717.D
 Acq: 24 Feb 2023 12:38

Tgt Ion: 65 Resp: 2798

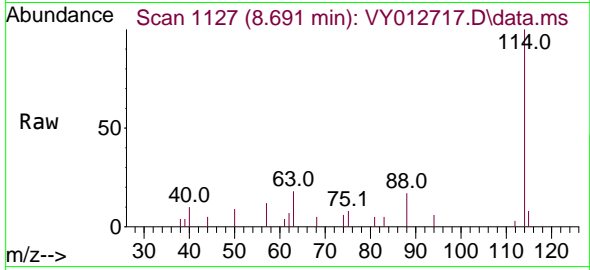
Ion	Ratio	Lower	Upper
65	100		
67	51.2	0.0	104.6





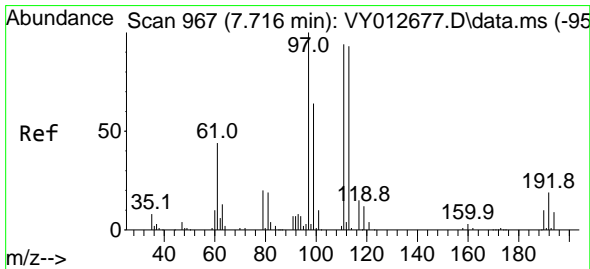
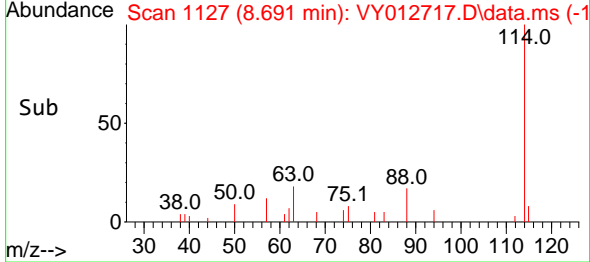
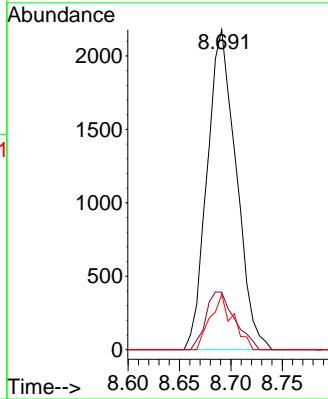
#34
 1,4-Difluorobenzene
 Concen: 50.000 ug/l
 RT: 8.691 min Scan# 1127
 Delta R.T. -0.000 min
 Lab File: VY012717.D
 Acq: 24 Feb 2023 12:38

Instrument : MSVOA_Y
 ClientSampleId : TR-05-02212023



Tgt Ion:114 Resp: 4280

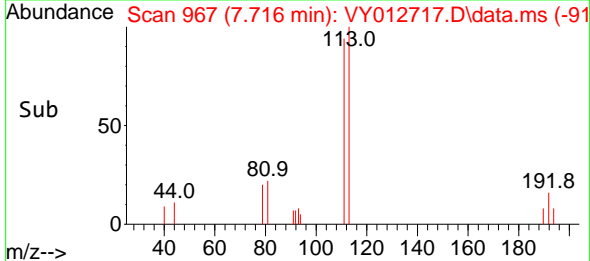
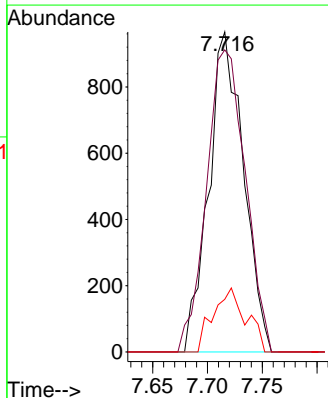
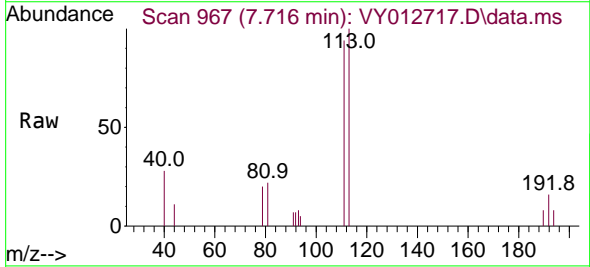
Ion	Ratio	Lower	Upper
114	100		
63	17.9	0.0	42.8
88	17.3	0.0	29.6

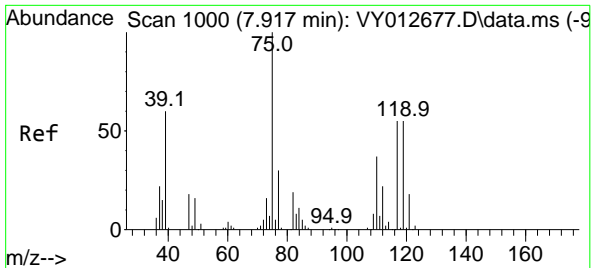


#35
 Dibromofluoromethane
 Concen: 73.819 ug/l
 RT: 7.716 min Scan# 967
 Delta R.T. -0.000 min
 Lab File: VY012717.D
 Acq: 24 Feb 2023 12:38

Tgt Ion:113 Resp: 2134

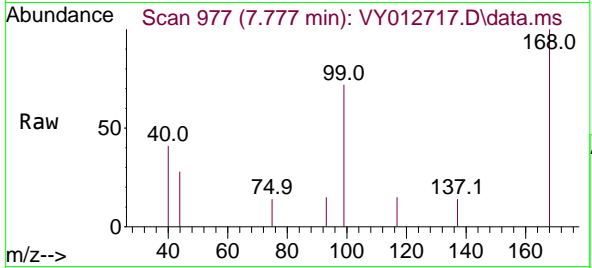
Ion	Ratio	Lower	Upper
113	100		
111	105.4	82.0	123.0
192	18.8	16.2	24.2



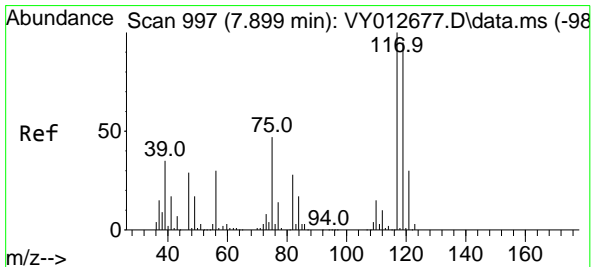
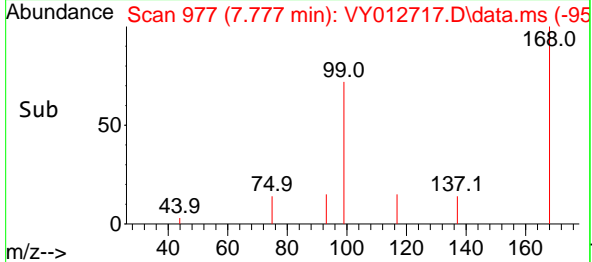
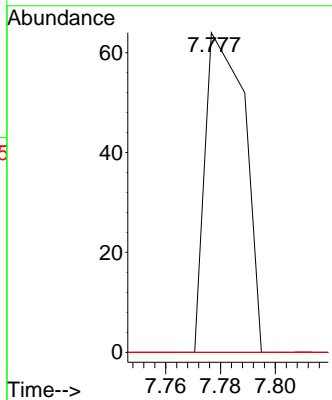


#36
 1,1-Dichloropropene
 Concen: 1.397 ug/l
 RT: 7.777 min Scan# 91
 Delta R.T. -0.140 min
 Lab File: VY012717.D
 Acq: 24 Feb 2023 12:38

Instrument : MSVOA_Y
 ClientSampleId : TR-05-02212023

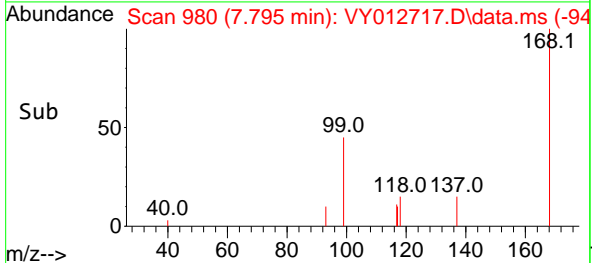
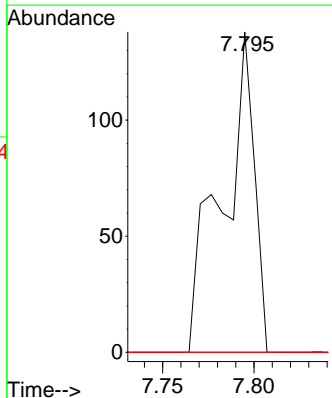
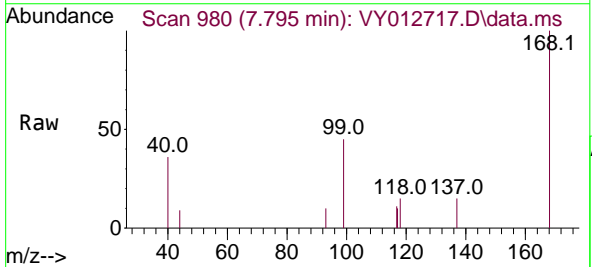


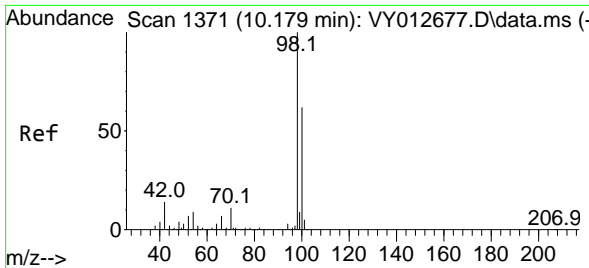
Tgt Ion: 75 Resp: 64
 Ion Ratio Lower Upper
 75 100
 110 0.0 17.6 52.8#
 77 0.0 24.6 37.0#



#38
 Carbon Tetrachloride
 Concen: 3.546 ug/l
 RT: 7.795 min Scan# 980
 Delta R.T. -0.104 min
 Lab File: VY012717.D
 Acq: 24 Feb 2023 12:38

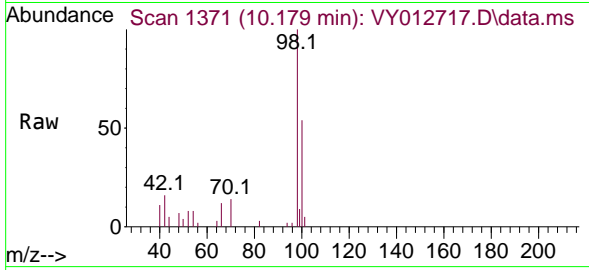
Tgt Ion: 117 Resp: 168
 Ion Ratio Lower Upper
 117 100
 119 0.0 75.5 113.3#
 121 0.0 23.8 35.8#



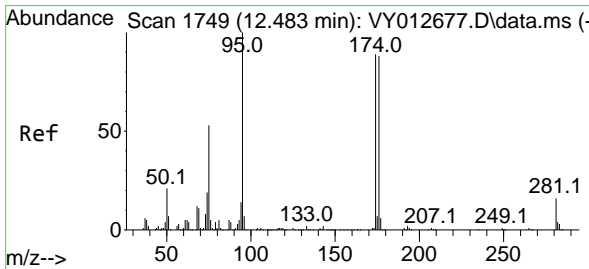
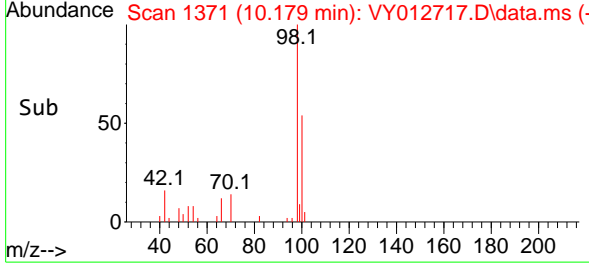
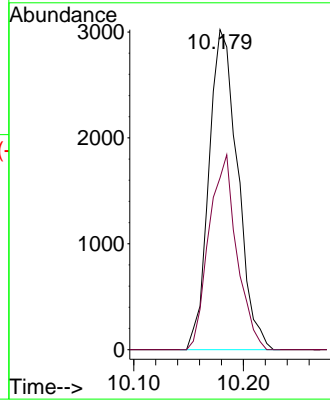


#50
 Toluene-d8
 Concen: 50.839 ug/l
 RT: 10.179 min Scan# 1371
 Delta R.T. -0.000 min
 Lab File: VY012717.D
 Acq: 24 Feb 2023 12:38

Instrument : MSVOA_Y
 ClientSampleId : TR-05-02212023

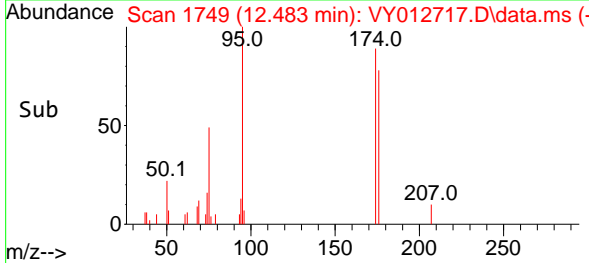
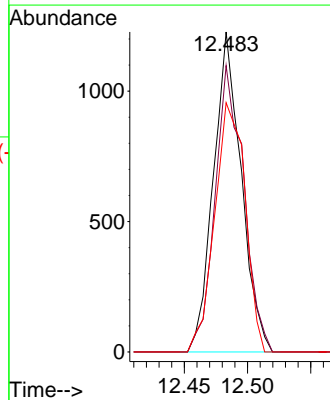
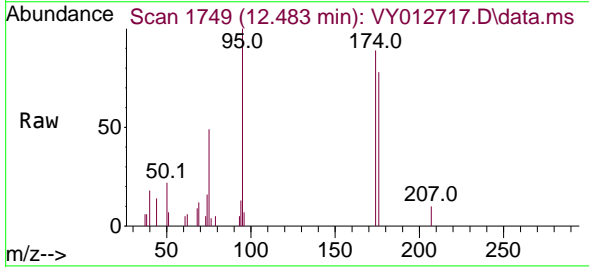


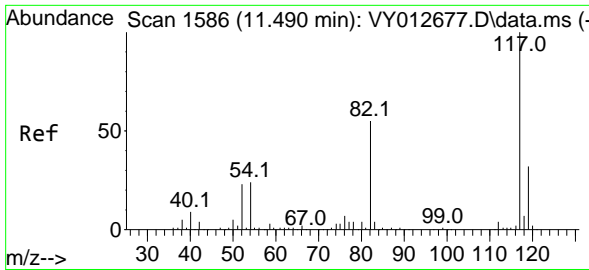
Tgt Ion: 98 Resp: 5506
 Ion Ratio Lower Upper
 98 100
 100 59.0 51.2 76.8



#62
 4-Bromofluorobenzene
 Concen: 54.129 ug/l
 RT: 12.483 min Scan# 1749
 Delta R.T. 0.000 min
 Lab File: VY012717.D
 Acq: 24 Feb 2023 12:38

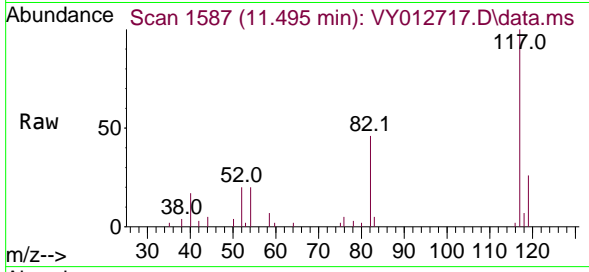
Tgt Ion: 95 Resp: 1876
 Ion Ratio Lower Upper
 95 100
 174 92.1 0.0 172.8
 176 85.1 0.0 169.4



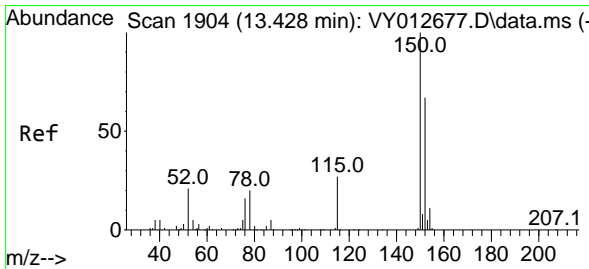
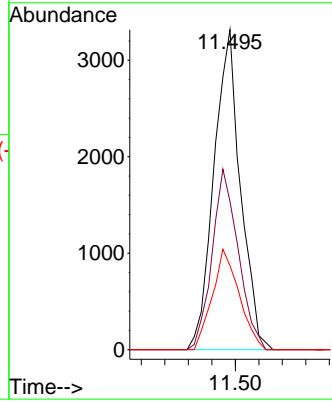
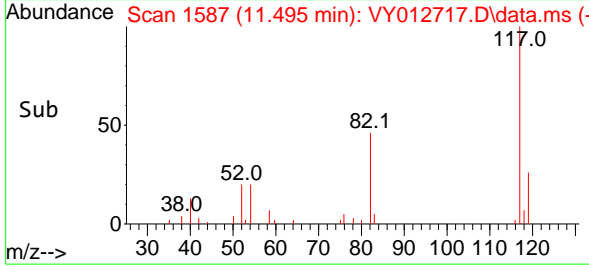


#63
 Chlorobenzene-d5
 Concen: 50.000 ug/l
 RT: 11.495 min Scan# 1117
 Delta R.T. 0.005 min
 Lab File: VY012717.D
 Acq: 24 Feb 2023 12:38

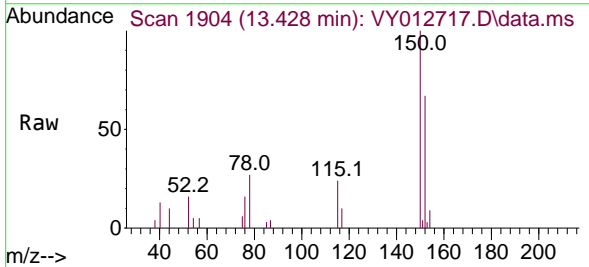
Instrument : MSVOA_Y
 ClientSampleId : TR-05-02212023



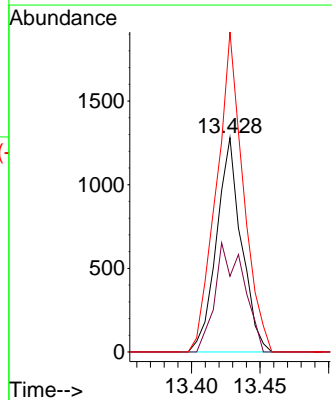
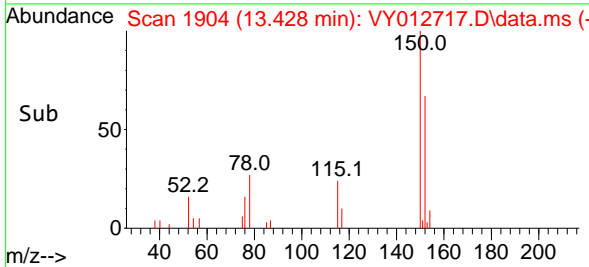
Tgt Ion:117 Resp: 5201
 Ion Ratio Lower Upper
 117 100
 82 46.4 44.1 66.1
 119 26.2 25.5 38.3

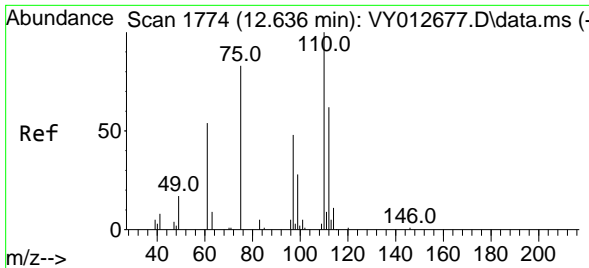


#72
 1,4-Dichlorobenzene-d4
 Concen: 50.000 ug/l
 RT: 13.428 min Scan# 1904
 Delta R.T. 0.000 min
 Lab File: VY012717.D
 Acq: 24 Feb 2023 12:38



Tgt Ion:152 Resp: 1621
 Ion Ratio Lower Upper
 152 100
 115 58.6 28.7 86.3
 150 160.1 0.0 347.6

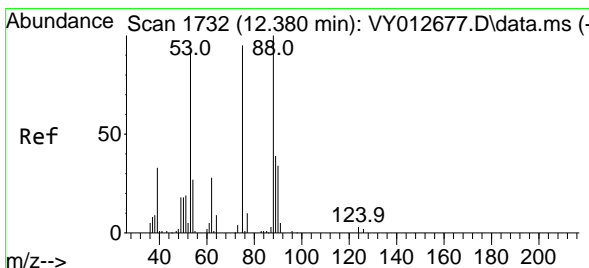
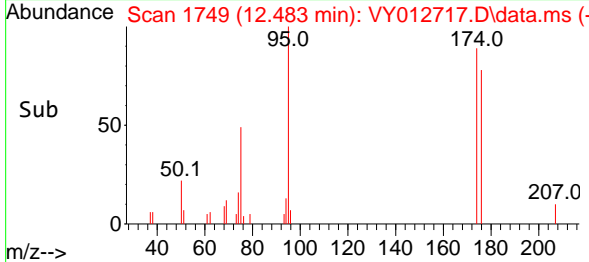
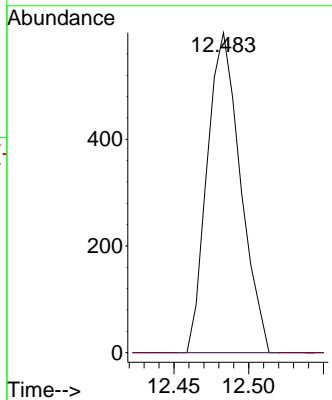
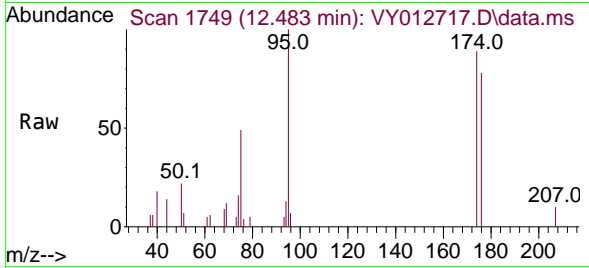




#76
 1,2,3-Trichloropropane
 Concen: 46.020 ug/l
 RT: 12.483 min Scan# 1749
 Delta R.T. -0.153 min
 Lab File: VY012717.D
 Acq: 24 Feb 2023 12:38

Instrument : MSVOA_Y
 ClientSampleId : TR-05-02212023

Tgt Ion: 75 Resp: 930
 Ion Ratio Lower Upper
 75 100
 77 0.0 0.0 0.0



#81
 trans-1,4-Dichloro-2-butene
 Concen: 97.494 ug/l
 RT: 12.483 min Scan# 1749
 Delta R.T. 0.103 min
 Lab File: VY012717.D
 Acq: 24 Feb 2023 12:38

Tgt Ion: 75 Resp: 930
 Ion Ratio Lower Upper
 75 100
 53 0.0 80.4 120.6#
 89 0.0 36.5 54.7#

