

Data Path : Z:\voasrv\HPCHEM1\MSVOA\_Y\Data\VY030122\  
 Data File : VY007678.D  
 Acq On : 01 Mar 2022 19:44  
 Operator : SY/MD  
 Sample : N1722-03  
 Misc : 5.00g/5.0mL/MSVOA\_Y/SOIL  
 ALS Vial : 19 Sample Multiplier: 1

Instrument :  
 MSVOA\_Y  
 ClientSampleId :  
 DUM-7

Quant Time: Mar 02 07:53:08 2022  
 Quant Method : Z:\voasrv\HPCHEM1\MSVOA\_Y\methods\82Y022822S.M  
 Quant Title : SW846 8260  
 QLast Update : Tue Mar 01 09:08:03 2022  
 Response via : Initial Calibration

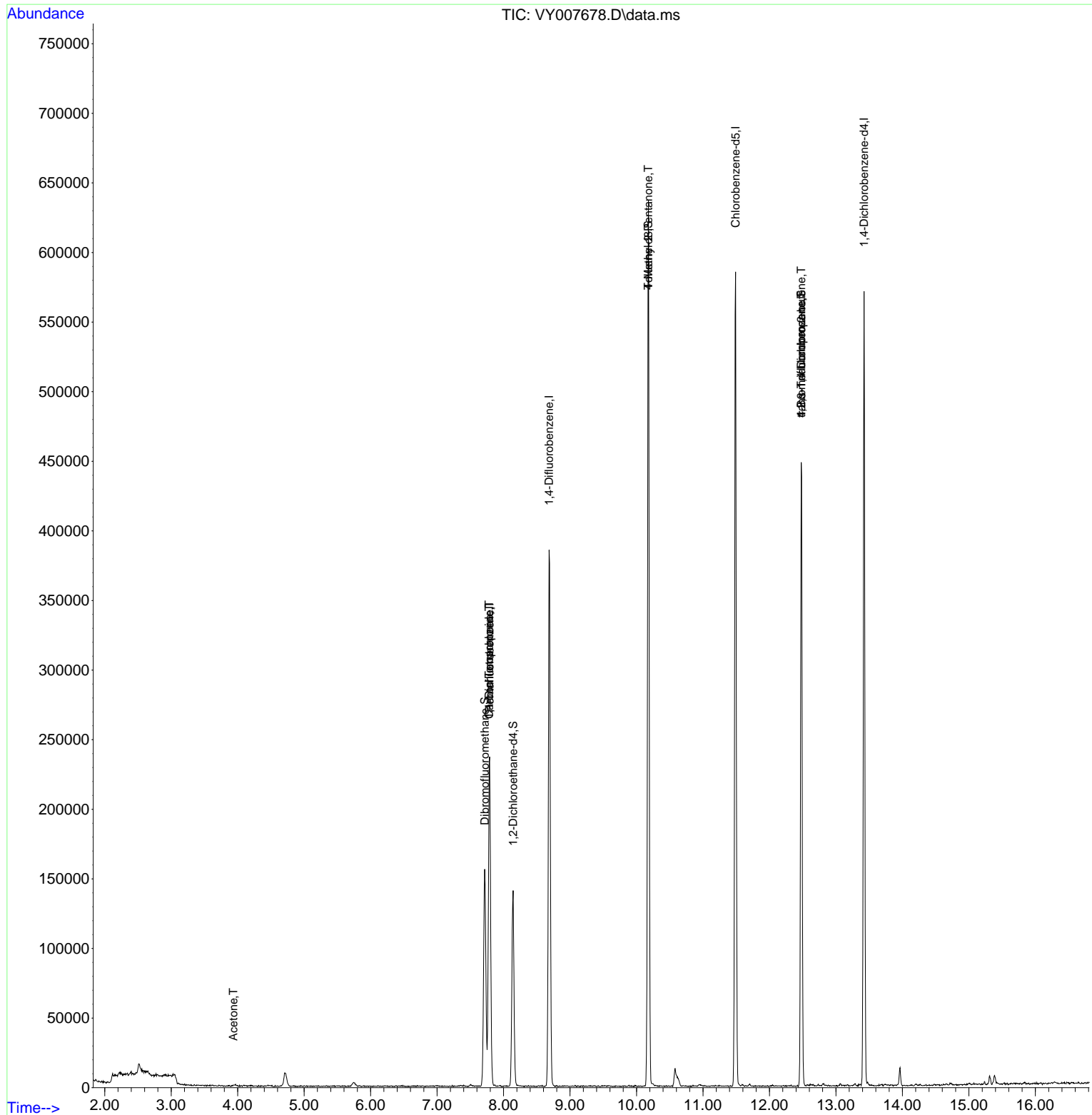
Compound	R.T.	QIon	Response	Conc	Units	Dev(Min)
Internal Standards						
1) Pentafluorobenzene	7.789	168	186952	50.000	ug/l	0.00
34) 1,4-Difluorobenzene	8.685	114	336076	50.000	ug/l	0.00
63) Chlorobenzene-d5	11.490	117	313999	50.000	ug/l	0.00
72) 1,4-Dichlorobenzene-d4	13.422	152	138884	50.000	ug/l	0.00
System Monitoring Compounds						
33) 1,2-Dichloroethane-d4	8.143	65	106257	54.290	ug/l	0.00
Spiked Amount	50.000	Range	50 - 163	Recovery	=	108.580%
35) Dibromofluoromethane	7.716	113	107606	50.081	ug/l	0.00
Spiked Amount	50.000	Range	54 - 147	Recovery	=	100.160%
50) Toluene-d8	10.179	98	410805	51.940	ug/l	0.00
Spiked Amount	50.000	Range	49 - 140	Recovery	=	103.880%
62) 4-Bromofluorobenzene	12.477	95	126410	49.582	ug/l	0.00
Spiked Amount	50.000	Range	25 - 144	Recovery	=	99.160%
Target Compounds						
2) Dichlorodifluoromethane	1.906	85	31	Below Cal	#	43
3) Chloromethane	2.107	50	1642	Below Cal	#	79
13) Acrolein	3.717	56	83	Below Cal	#	45
16) Acetone	3.936	43	1429	3.589	ug/l #	87
17) Carbon Disulfide	4.186	76	39	Below Cal	#	75
18) Methyl Acetate	4.479	43	346	Below Cal	#	72
20) Methylene Chloride	4.723	84	7421	Below Cal	#	72
31) Cyclohexane	7.783	56	4410	Below Cal	#	1
36) 1,1-Dichloropropene	7.783	75	15142	4.480	ug/l #	52
38) Carbon Tetrachloride	7.783	117	18822	5.220	ug/l #	17
51) 4-Methyl-2-Pentanone	10.179	43	1885	1.020	ug/l #	1
76) 1,2,3-Trichloropropane	12.477	75	69888	45.060	ug/l #	100
81) trans-1,4-Dichloro-2-b...	12.477	75	69888	92.119	ug/l #	7

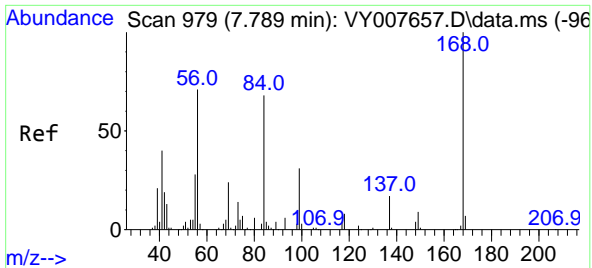
(#) = qualifier out of range (m) = manual integration (+) = signals summed

Data Path : Z:\voasrv\HPCHEM1\MSVOA\_Y\Data\VY030122\  
 Data File : VY007678.D  
 Acq On : 01 Mar 2022 19:44  
 Operator : SY/MD  
 Sample : N1722-03  
 Misc : 5.00g/5.0mL/MSVOA\_Y/SOIL  
 ALS Vial : 19 Sample Multiplier: 1

Instrument :  
 MSVOA\_Y  
 ClientSampleId :  
 DUM-7

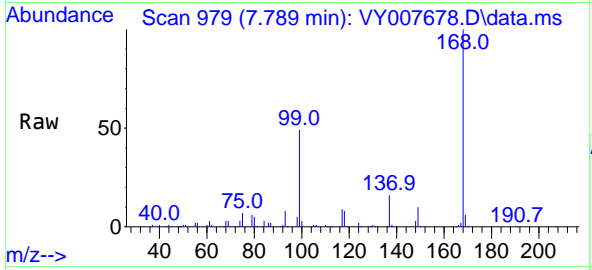
Quant Time: Mar 02 07:53:08 2022  
 Quant Method : Z:\voasrv\HPCHEM1\MSVOA\_Y\methods\82Y022822S.M  
 Quant Title : SW846 8260  
 QLast Update : Tue Mar 01 09:08:03 2022  
 Response via : Initial Calibration



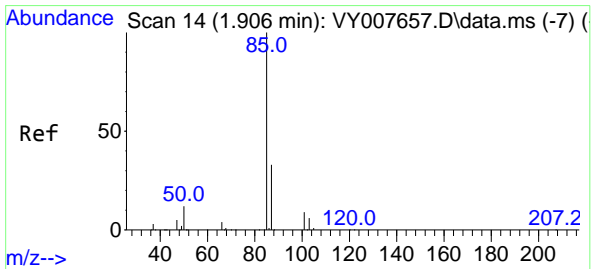
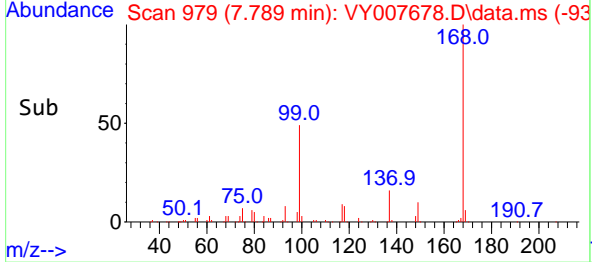
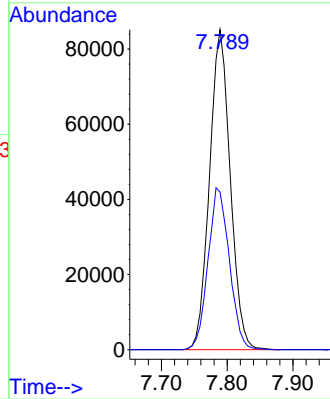


#1  
 Pentafluorobenzene  
 Concen: 50.000 ug/l  
 RT: 7.789 min Scan# 91  
 Delta R.T. 0.000 min  
 Lab File: VY007678.D  
 Acq: 01 Mar 2022 19:44

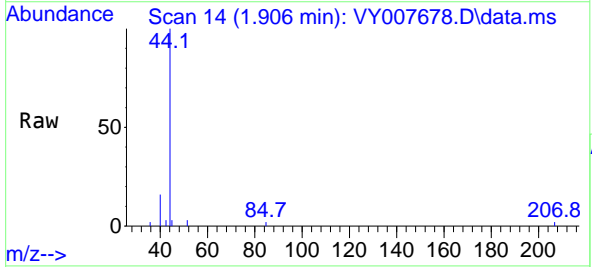
Instrument :  
 MSVOA\_Y  
 ClientSampleId :  
 DUM-7



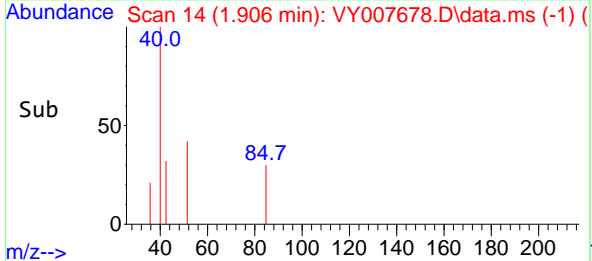
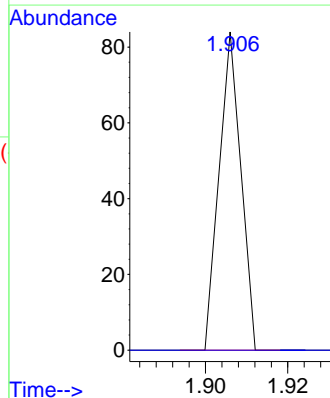
Tgt Ion:168 Resp: 186952  
 Ion Ratio Lower Upper  
 168 100  
 99 49.3 46.9 70.3



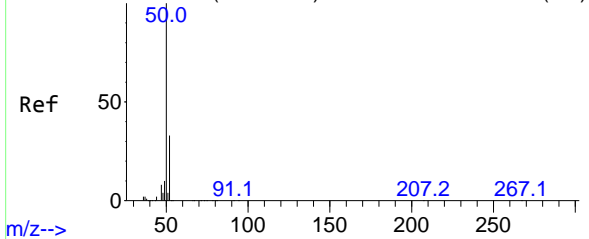
#2  
 Dichlorodifluoromethane  
 Concen: Below Cal  
 RT: 1.906 min Scan# 14  
 Delta R.T. -0.000 min  
 Lab File: VY007678.D  
 Acq: 01 Mar 2022 19:44



Tgt Ion: 85 Resp: 31  
 Ion Ratio Lower Upper  
 85 100  
 87 0.0 16.1 48.2#



Abundance Scan 48 (2.113 min): VY007657.D\data.ms (-41)

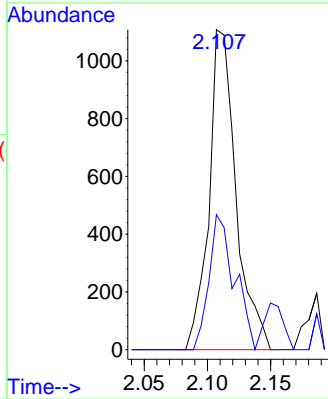
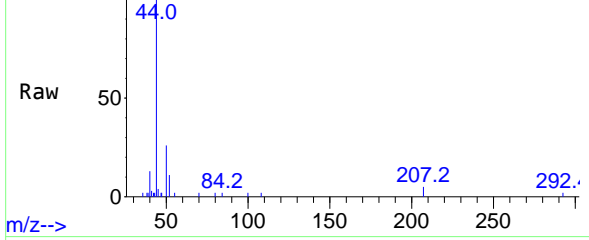


#3  
 Chloromethane  
 Concen: Below Cal  
 RT: 2.107 min Scan# 41  
 Delta R.T. -0.006 min  
 Lab File: VY007678.D  
 Acq: 01 Mar 2022 19:44

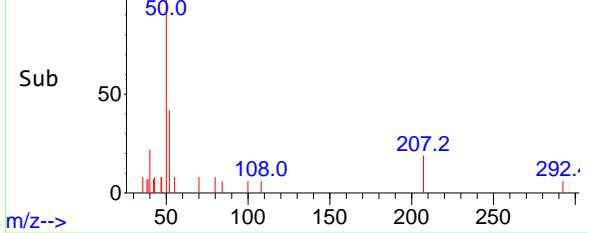
Instrument :  
 MSVOA\_Y  
 ClientSampleId :  
 DUM-7

Tgt Ion: 50 Resp: 1642  
 Ion Ratio Lower Upper  
 50 100  
 52 42.2 24.6 37.0#

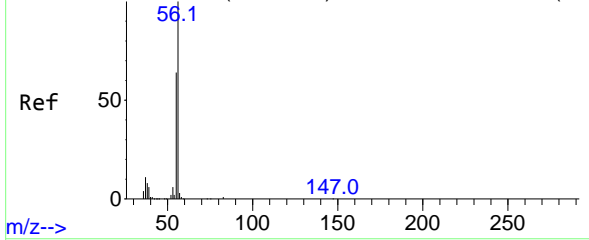
Abundance Scan 47 (2.107 min): VY007678.D\data.ms



Abundance Scan 47 (2.107 min): VY007678.D\data.ms (-1)



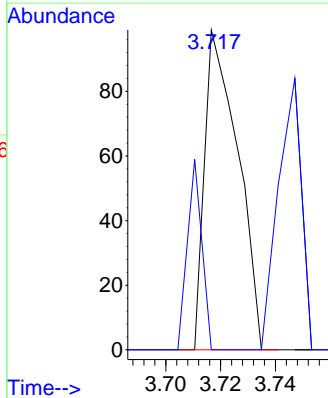
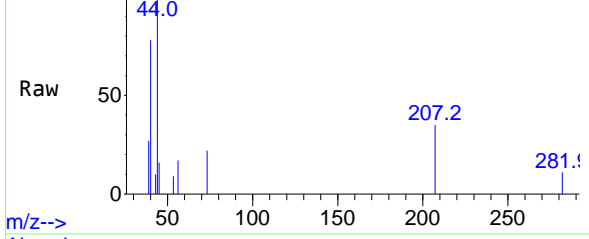
Abundance Scan 313 (3.729 min): VY007657.D\data.ms (-30)



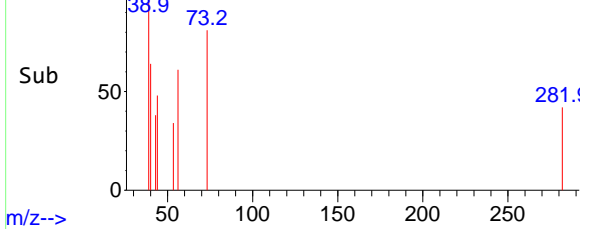
#13  
 Acrolein  
 Concen: Below Cal  
 RT: 3.717 min Scan# 311  
 Delta R.T. -0.012 min  
 Lab File: VY007678.D  
 Acq: 01 Mar 2022 19:44

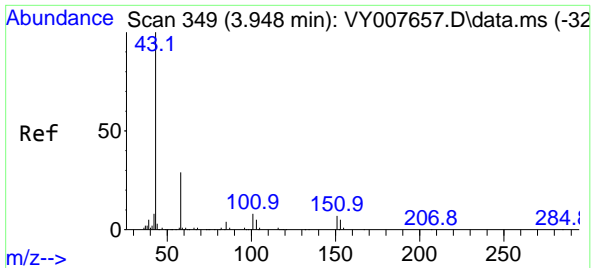
Tgt Ion: 56 Resp: 83  
 Ion Ratio Lower Upper  
 56 100  
 55 26.5 57.6 86.4#

Abundance Scan 311 (3.717 min): VY007678.D\data.ms



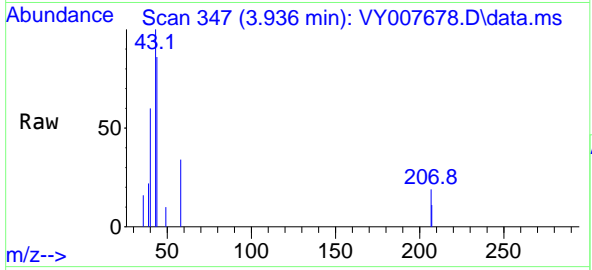
Abundance Scan 311 (3.717 min): VY007678.D\data.ms (-26)



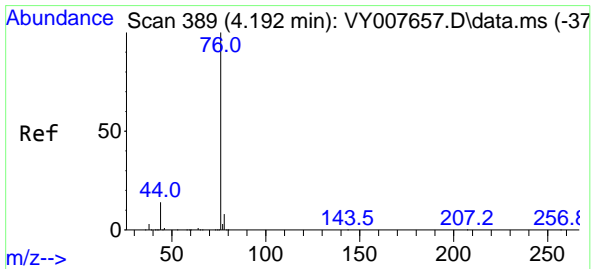
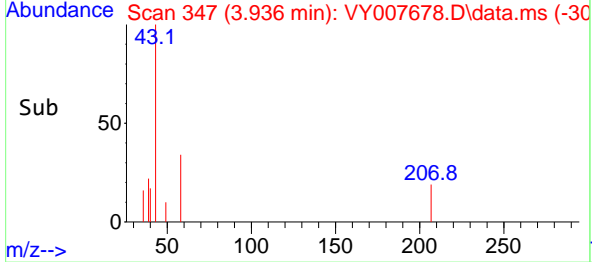
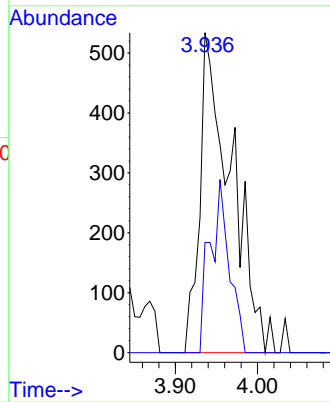


#16  
 Acetone  
 Concen: 3.589 ug/l  
 RT: 3.936 min Scan# 349  
 Delta R.T. -0.012 min  
 Lab File: VY007678.D  
 Acq: 01 Mar 2022 19:44

Instrument : MSVOA\_Y  
 ClientSampleId : DUM-7

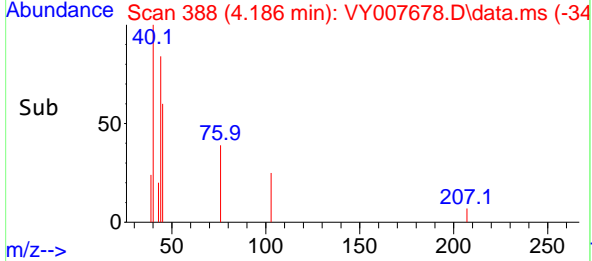
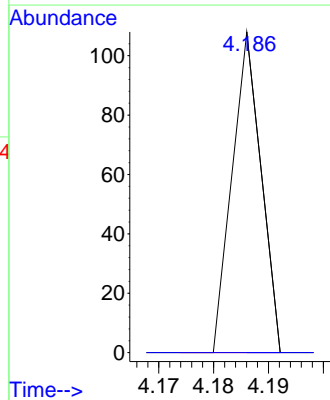
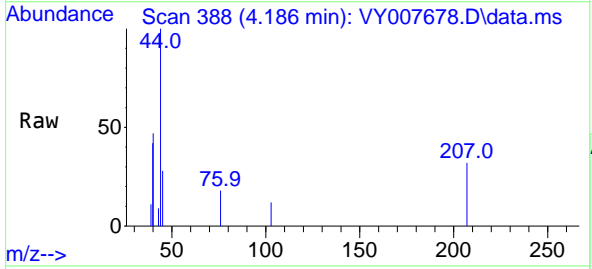


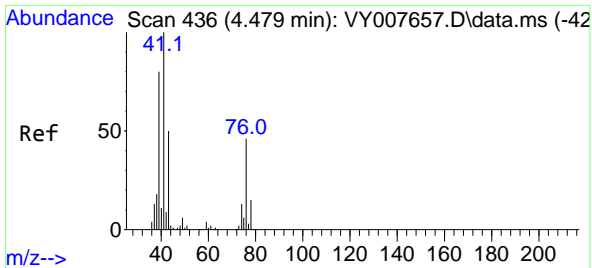
Tgt Ion: 43 Resp: 1429  
 Ion Ratio Lower Upper  
 43 100  
 58 34.5 22.0 33.0#



#17  
 Carbon Disulfide  
 Concen: Below Cal  
 RT: 4.186 min Scan# 388  
 Delta R.T. -0.006 min  
 Lab File: VY007678.D  
 Acq: 01 Mar 2022 19:44

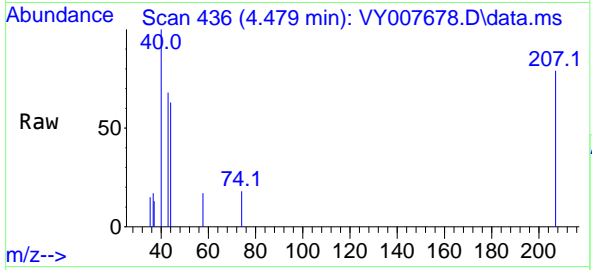
Tgt Ion: 76 Resp: 39  
 Ion Ratio Lower Upper  
 76 100  
 78 0.0 7.4 11.0#



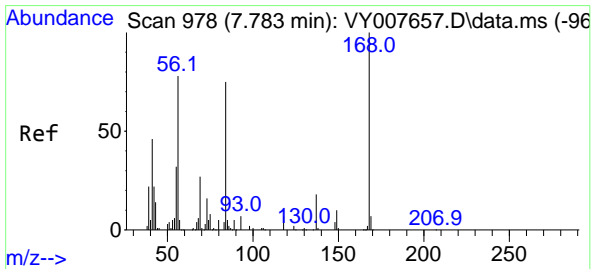
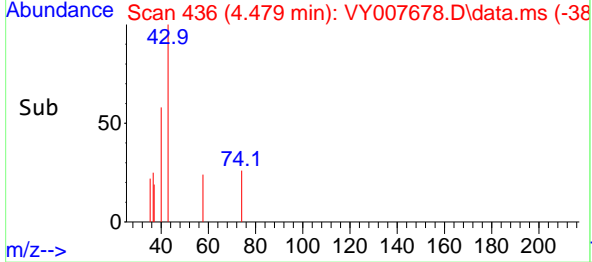
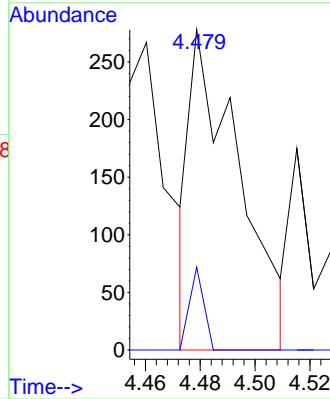


#18  
Methyl Acetate  
Concen: Below Cal  
RT: 4.479 min Scan# 41  
Delta R.T. -0.000 min  
Lab File: VY007678.D  
Acq: 01 Mar 2022 19:44

Instrument : MSVOA\_Y  
Client SampleId : DUM-7

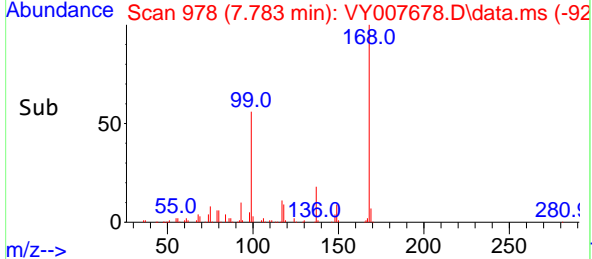
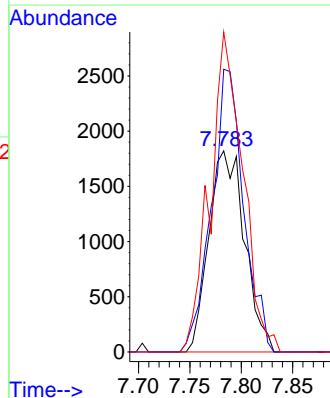
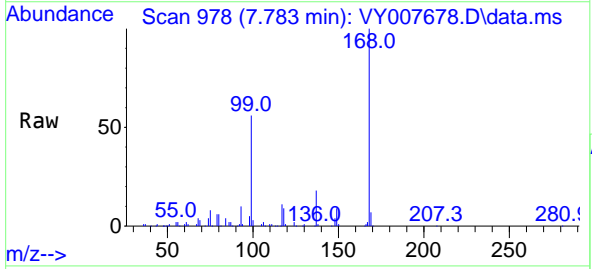


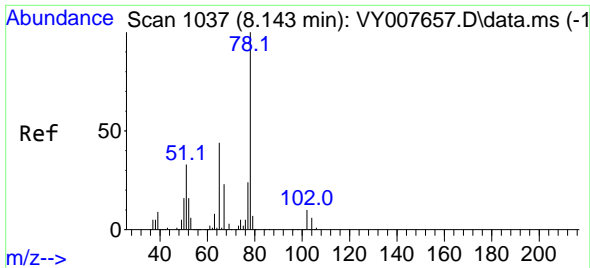
Tgt Ion: 43 Resp: 346  
Ion Ratio Lower Upper  
43 100  
74 7.5 16.6 24.8#



#31  
Cyclohexane  
Concen: Below Cal  
RT: 7.783 min Scan# 978  
Delta R.T. -0.000 min  
Lab File: VY007678.D  
Acq: 01 Mar 2022 19:44

Tgt Ion: 56 Resp: 4410  
Ion Ratio Lower Upper  
56 100  
69 140.6 26.7 40.1#  
84 159.1 67.2 100.8#

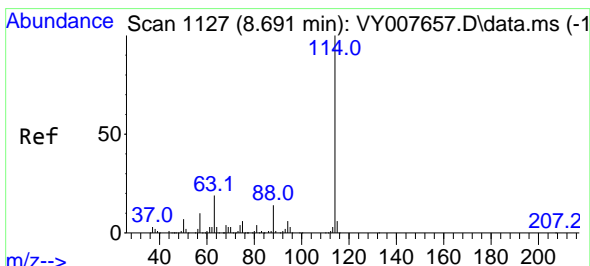
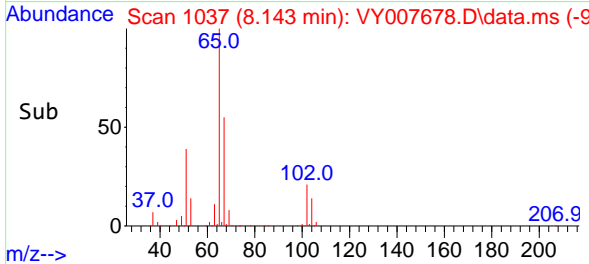
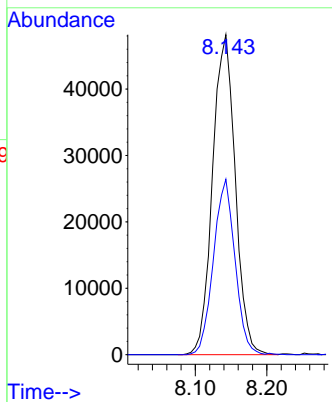
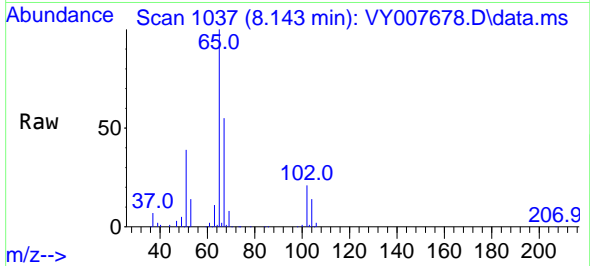




#33  
 1,2-Dichloroethane-d4  
 Concen: 54.290 ug/l  
 RT: 8.143 min Scan# 1037  
 Delta R.T. -0.000 min  
 Lab File: VY007678.D  
 Acq: 01 Mar 2022 19:44

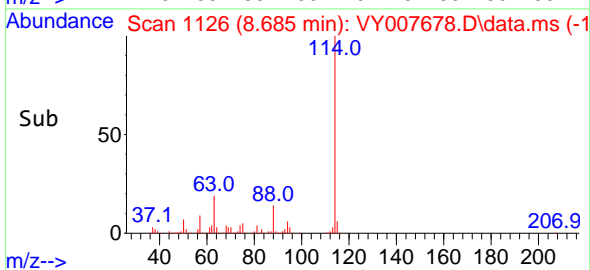
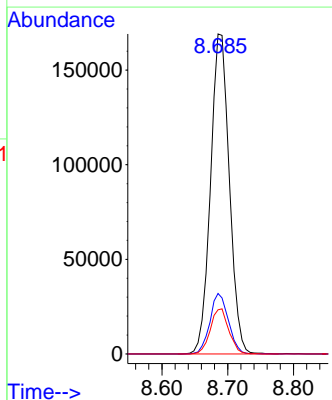
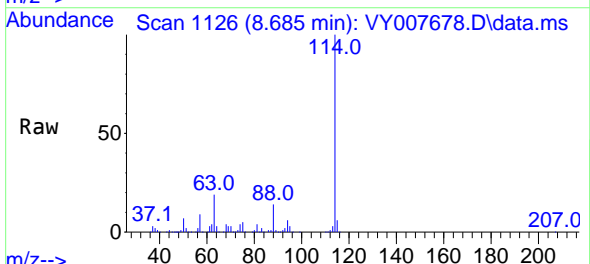
Instrument : MSVOA\_Y  
 ClientSampleId : DUM-7

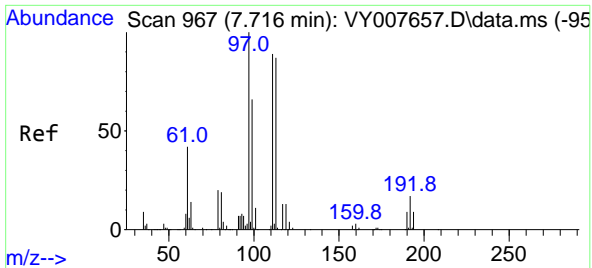
Tgt Ion: 65 Resp: 106257  
 Ion Ratio Lower Upper  
 65 100  
 67 52.0 0.0 99.4



#34  
 1,4-Difluorobenzene  
 Concen: 50.000 ug/l  
 RT: 8.685 min Scan# 1126  
 Delta R.T. -0.006 min  
 Lab File: VY007678.D  
 Acq: 01 Mar 2022 19:44

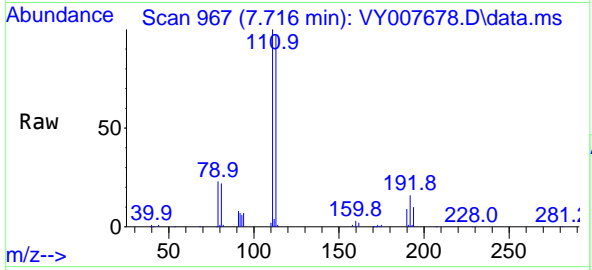
Tgt Ion: 114 Resp: 336076  
 Ion Ratio Lower Upper  
 114 100  
 63 18.9 0.0 43.2  
 88 13.8 0.0 31.8



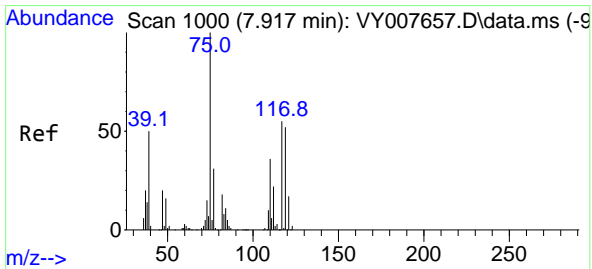
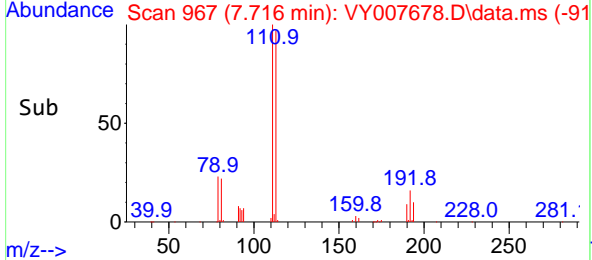
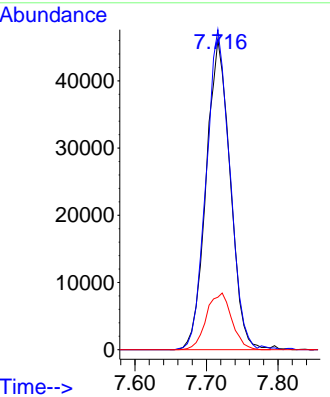


#35  
 Dibromofluoromethane  
 Concen: 50.081 ug/l  
 RT: 7.716 min Scan# 901  
 Delta R.T. -0.000 min  
 Lab File: VY007678.D  
 Acq: 01 Mar 2022 19:44

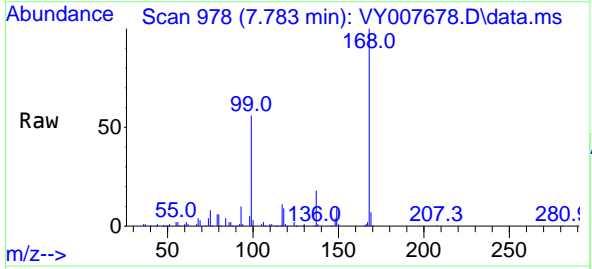
Instrument : MSVOA\_Y  
 ClientSampleId : DUM-7



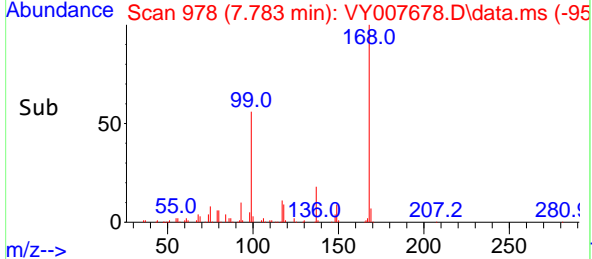
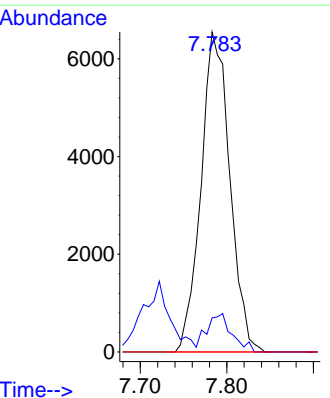
Tgt Ion:113 Resp: 107606  
 Ion Ratio Lower Upper  
 113 100  
 111 102.3 82.6 124.0  
 192 19.2 17.6 26.4



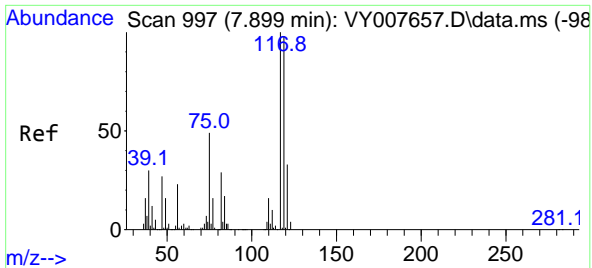
#36  
 1,1-Dichloropropene  
 Concen: 4.480 ug/l  
 RT: 7.783 min Scan# 978  
 Delta R.T. -0.134 min  
 Lab File: VY007678.D  
 Acq: 01 Mar 2022 19:44



Tgt Ion: 75 Resp: 15142  
 Ion Ratio Lower Upper  
 75 100  
 110 10.4 17.1 51.2#  
 77 0.0 24.4 36.6#

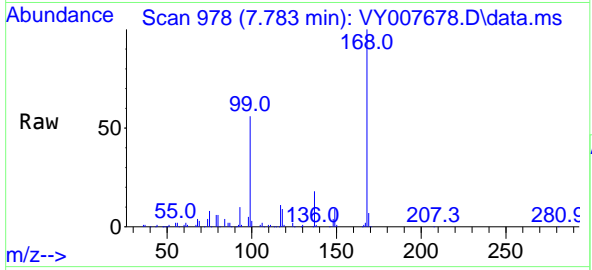




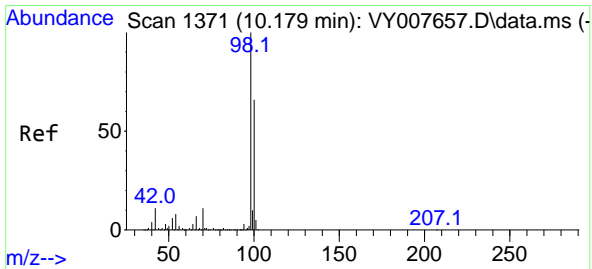
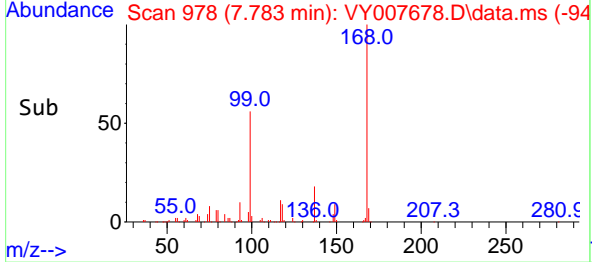
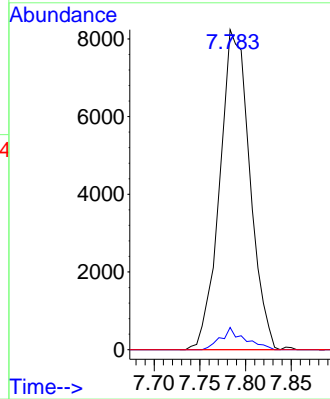


#38  
 Carbon Tetrachloride  
 Concen: 5.220 ug/l  
 RT: 7.783 min Scan# 91  
 Delta R.T. -0.116 min  
 Lab File: VY007678.D  
 Acq: 01 Mar 2022 19:44

Instrument :  
 MSVOA\_Y  
 ClientSampleId :  
 DUM-7

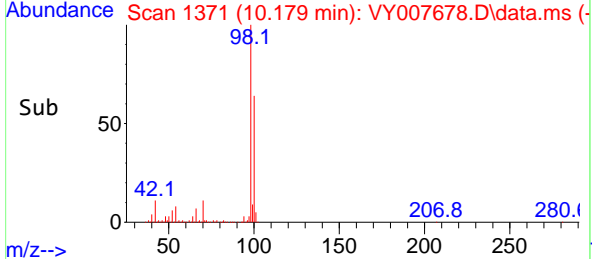
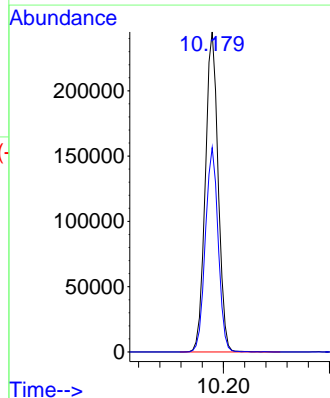
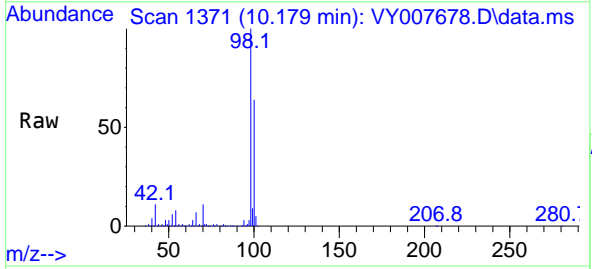


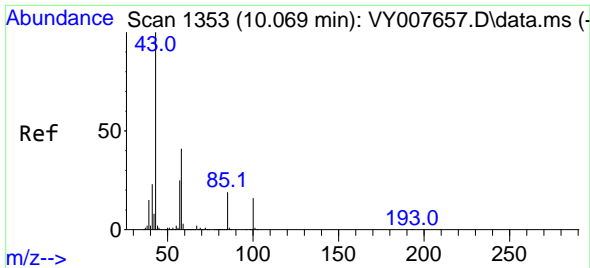
Tgt Ion:117 Resp: 18822  
 Ion Ratio Lower Upper  
 117 100  
 119 7.0 77.9 116.9#  
 121 0.0 24.8 37.2#



#50  
 Toluene-d8  
 Concen: 51.940 ug/l  
 RT: 10.179 min Scan# 1371  
 Delta R.T. -0.000 min  
 Lab File: VY007678.D  
 Acq: 01 Mar 2022 19:44

Tgt Ion: 98 Resp: 410805  
 Ion Ratio Lower Upper  
 98 100  
 100 63.8 50.2 75.2

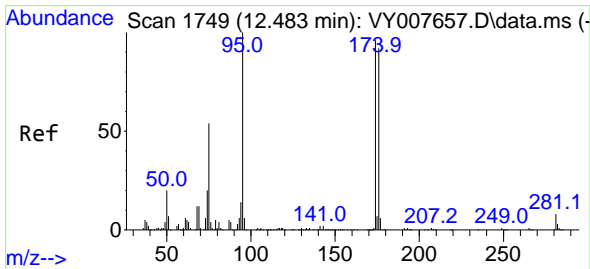
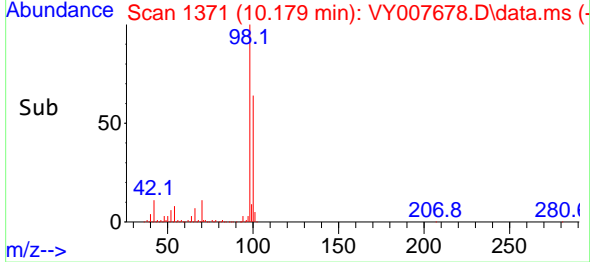
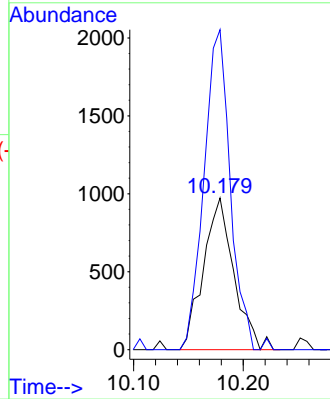
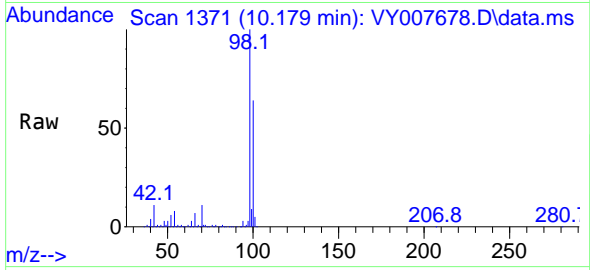




#51  
 4-Methyl-2-Pentanone  
 Concen: 1.020 ug/l  
 RT: 10.179 min Scan# 11  
 Delta R.T. 0.110 min  
 Lab File: VY007678.D  
 Acq: 01 Mar 2022 19:44

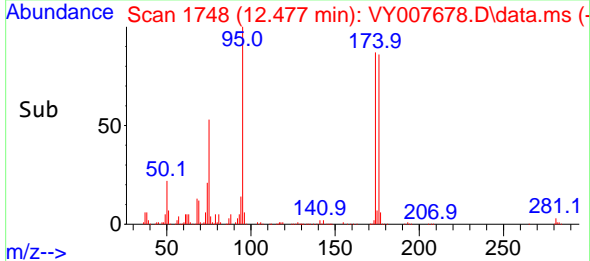
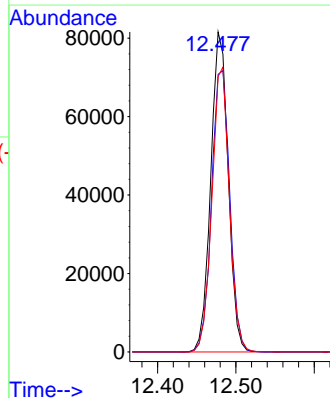
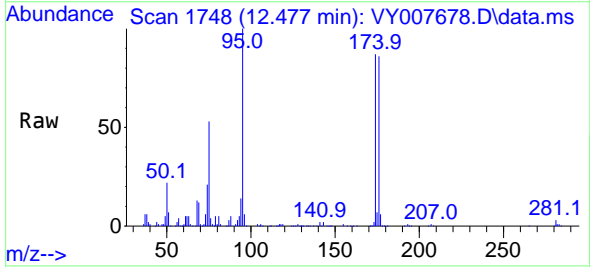
Instrument : MSVOA\_Y  
 ClientSampleId : DUM-7

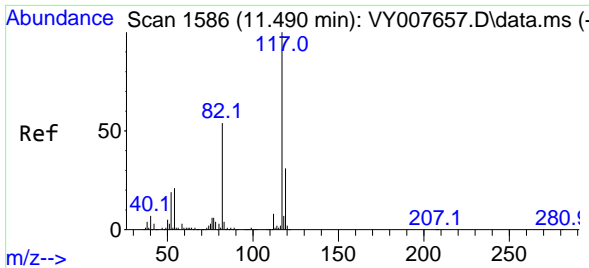
Tgt Ion: 43 Resp: 1885  
 Ion Ratio Lower Upper  
 43 100  
 58 181.1 28.1 42.1#



#62  
 4-Bromofluorobenzene  
 Concen: 49.582 ug/l  
 RT: 12.477 min Scan# 1748  
 Delta R.T. -0.006 min  
 Lab File: VY007678.D  
 Acq: 01 Mar 2022 19:44

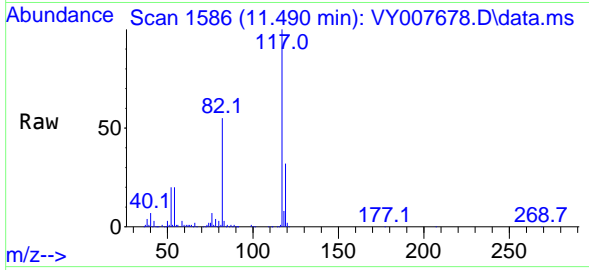
Tgt Ion: 95 Resp: 126410  
 Ion Ratio Lower Upper  
 95 100  
 174 91.6 0.0 177.0  
 176 88.7 0.0 175.8



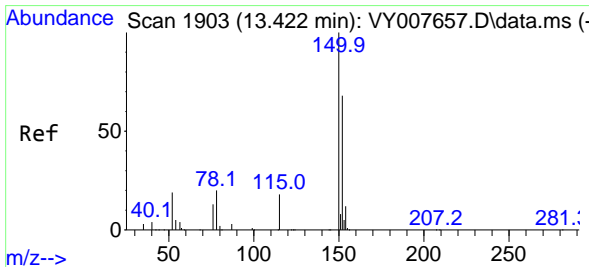
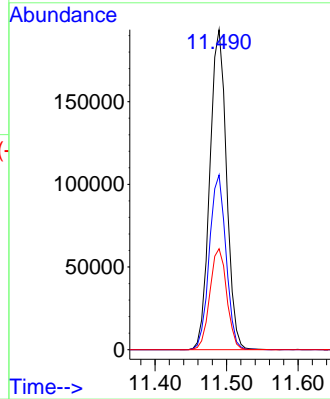
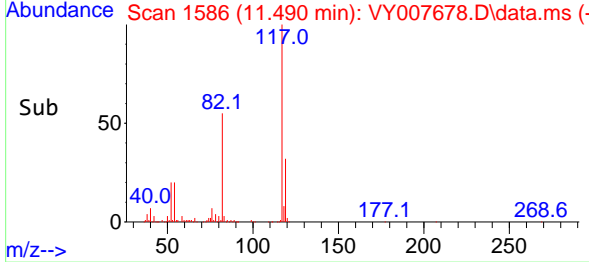


#63  
 Chlorobenzene-d5  
 Concen: 50.000 ug/l  
 RT: 11.490 min Scan# 111  
 Delta R.T. -0.000 min  
 Lab File: VY007678.D  
 Acq: 01 Mar 2022 19:44

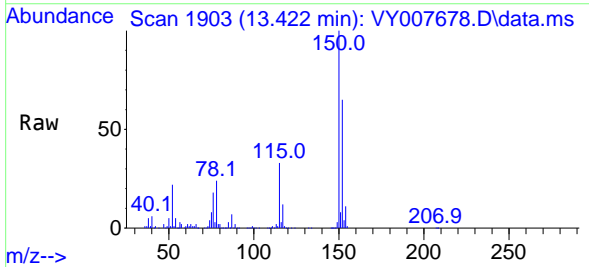
Instrument : MSVOA\_Y  
 ClientSampleId : DUM-7



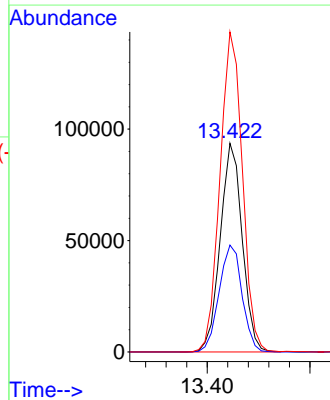
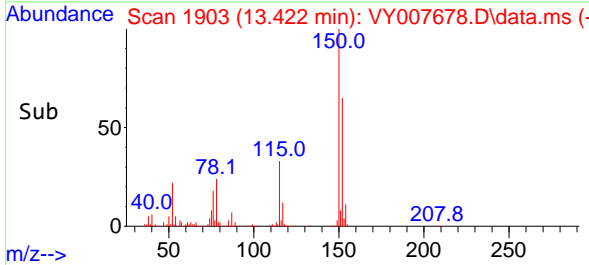
Tgt Ion:117 Resp: 313999  
 Ion Ratio Lower Upper  
 117 100  
 82 54.6 43.0 64.4  
 119 31.6 25.4 38.0

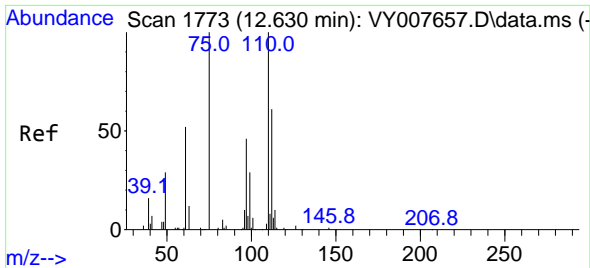


#72  
 1,4-Dichlorobenzene-d4  
 Concen: 50.000 ug/l  
 RT: 13.422 min Scan# 1903  
 Delta R.T. 0.000 min  
 Lab File: VY007678.D  
 Acq: 01 Mar 2022 19:44



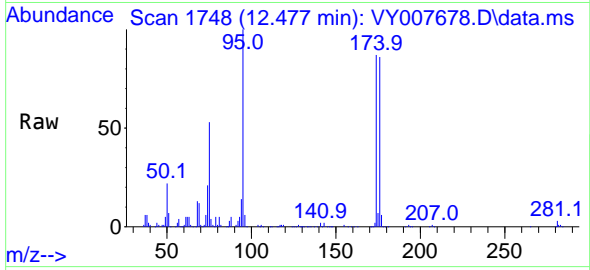
Tgt Ion:152 Resp: 138884  
 Ion Ratio Lower Upper  
 152 100  
 115 53.4 28.2 84.7  
 150 156.4 0.0 347.6



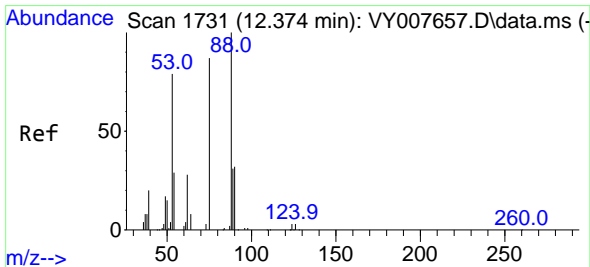
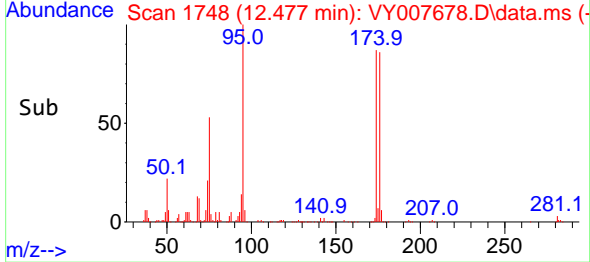
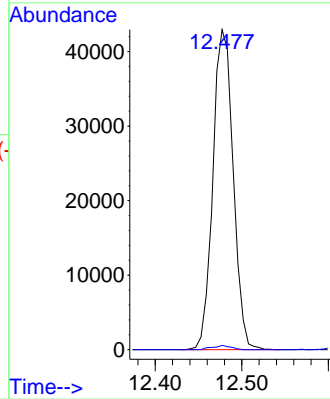


#76  
 1,2,3-Trichloropropane  
 Concen: 45.060 ug/l  
 RT: 12.477 min Scan# 1748  
 Delta R.T. -0.153 min  
 Lab File: VY007678.D  
 Acq: 01 Mar 2022 19:44

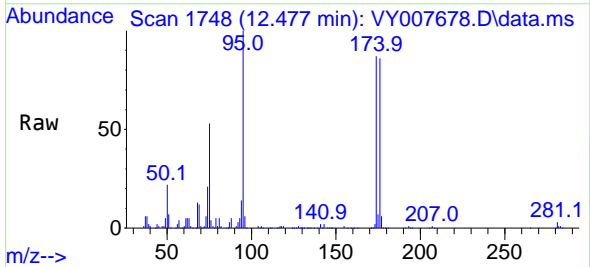
Instrument : MSVOA\_Y  
 ClientSampleId : DUM-7



Tgt Ion: 75 Resp: 69888  
 Ion Ratio Lower Upper  
 75 100  
 77 1.2 0.0 0.0#



#81  
 trans-1,4-Dichloro-2-butene  
 Concen: 92.119 ug/l  
 RT: 12.477 min Scan# 1748  
 Delta R.T. 0.103 min  
 Lab File: VY007678.D  
 Acq: 01 Mar 2022 19:44



Tgt Ion: 75 Resp: 69888  
 Ion Ratio Lower Upper  
 75 100  
 53 0.0 85.3 127.9#  
 89 0.0 37.0 55.4#

