

Data Path : Z:\voasrv\HPCHEM1\MSVOA_Y\Data\VY030322\
 Data File : VY007703.D
 Acq On : 03 Mar 2022 14:45
 Operator : SY/MD
 Sample : N1751-05
 Misc : 5.08g/5.0mL/MSVOA_Y/SOIL
 ALS Vial : 14 Sample Multiplier: 1

Instrument :
 MSVOA_Y
 ClientSampleId :
 DUM-13

Integration Parameters: RTEINT.P

Integrator: RTE
 Smoothing : ON Filtering: 5
 Sampling : 1 Min Area: 3 % of largest Peak
 Start Thrs: 0.2 Max Peaks: 100
 Stop Thrs : 0 Peak Location: TOP

If leading or trailing edge < 100 prefer < Baseline drop else tangent >
 Peak separation: 5

Method : Z:\voasrv\HPCHEM1\MSVOA_Y\methods\82Y022822S.M
 Title : SW846 8260

Signal : TIC: VY007703.D\data.ms

| peak # | R.T. min | first scan | max scan | last scan | PK TY | peak height | corr. area | corr. % max. | % of total |
|--------|----------|------------|----------|-----------|-------|-------------|------------|--------------|------------|
| 1 | 2.522 | 106 | 115 | 118 | rBV3 | 13652 | 31382 | 2.06% | 0.371% |
| 2 | 4.716 | 466 | 475 | 490 | rBV3 | 24951 | 76629 | 5.03% | 0.907% |
| 3 | 5.759 | 635 | 646 | 654 | rBV7 | 5389 | 16201 | 1.06% | 0.192% |
| 4 | 7.722 | 957 | 968 | 973 | rBV2 | 226126 | 536768 | 35.22% | 6.353% |
| 5 | 7.789 | 973 | 979 | 991 | rVB | 331862 | 743717 | 48.80% | 8.803% |
| 6 | 8.142 | 1026 | 1037 | 1048 | rBV2 | 215042 | 478507 | 31.40% | 5.664% |
| 7 | 8.691 | 1115 | 1127 | 1140 | rBV | 550312 | 1064668 | 69.86% | 12.602% |
| 8 | 10.179 | 1364 | 1371 | 1384 | rBV | 885775 | 1524061 | 100.00% | 18.040% |
| 9 | 10.575 | 1430 | 1436 | 1446 | rBV3 | 15016 | 39408 | 2.59% | 0.466% |
| 10 | 11.489 | 1579 | 1586 | 1598 | rVB | 903067 | 1445776 | 94.86% | 17.113% |
| 11 | 12.483 | 1738 | 1749 | 1757 | rBV | 716262 | 1127956 | 74.01% | 13.351% |
| 12 | 13.422 | 1895 | 1903 | 1911 | rBV | 865823 | 1343308 | 88.14% | 15.900% |
| 13 | 13.965 | 1985 | 1992 | 1997 | rBV | 11024 | 20052 | 1.32% | 0.237% |

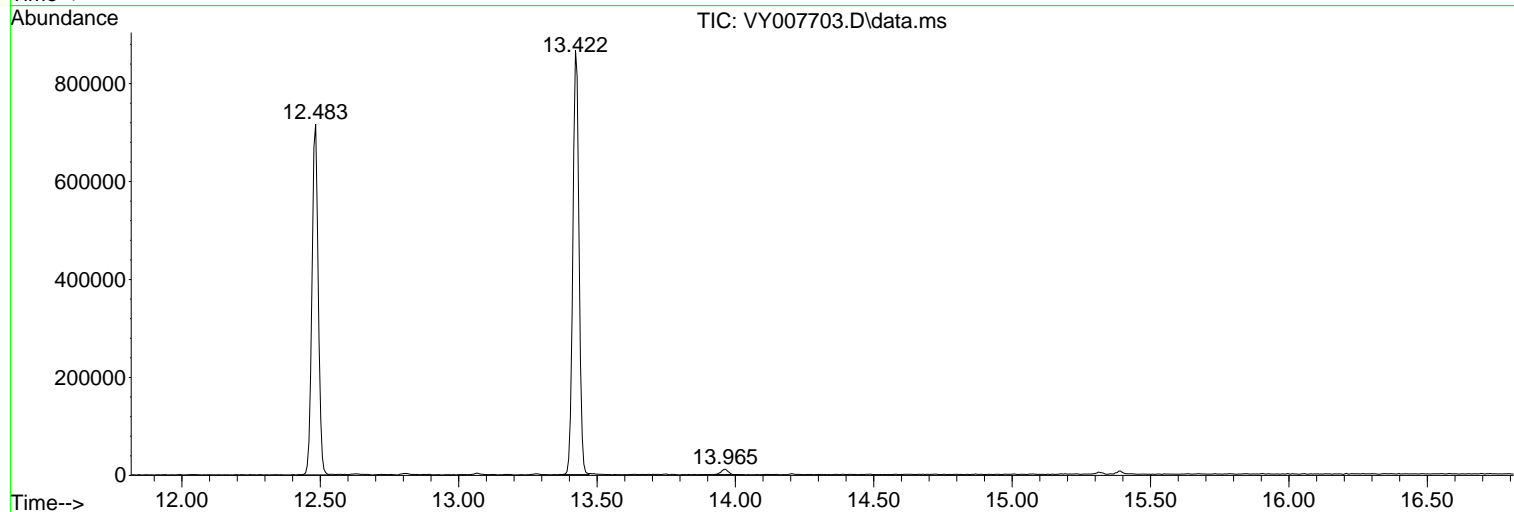
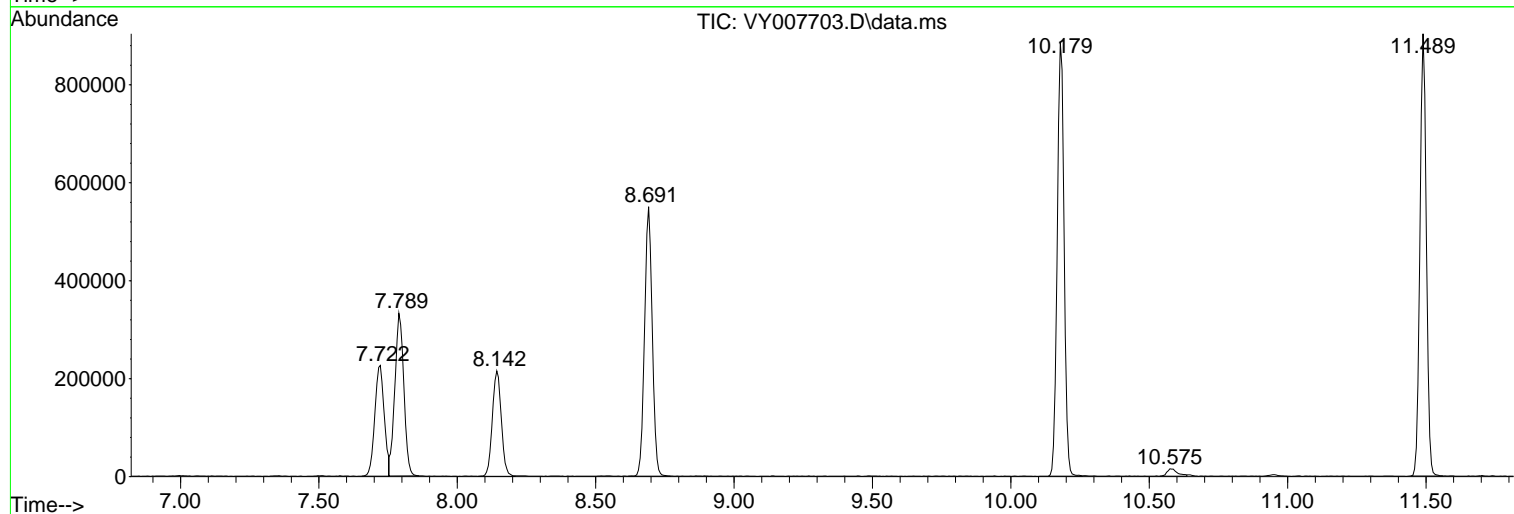
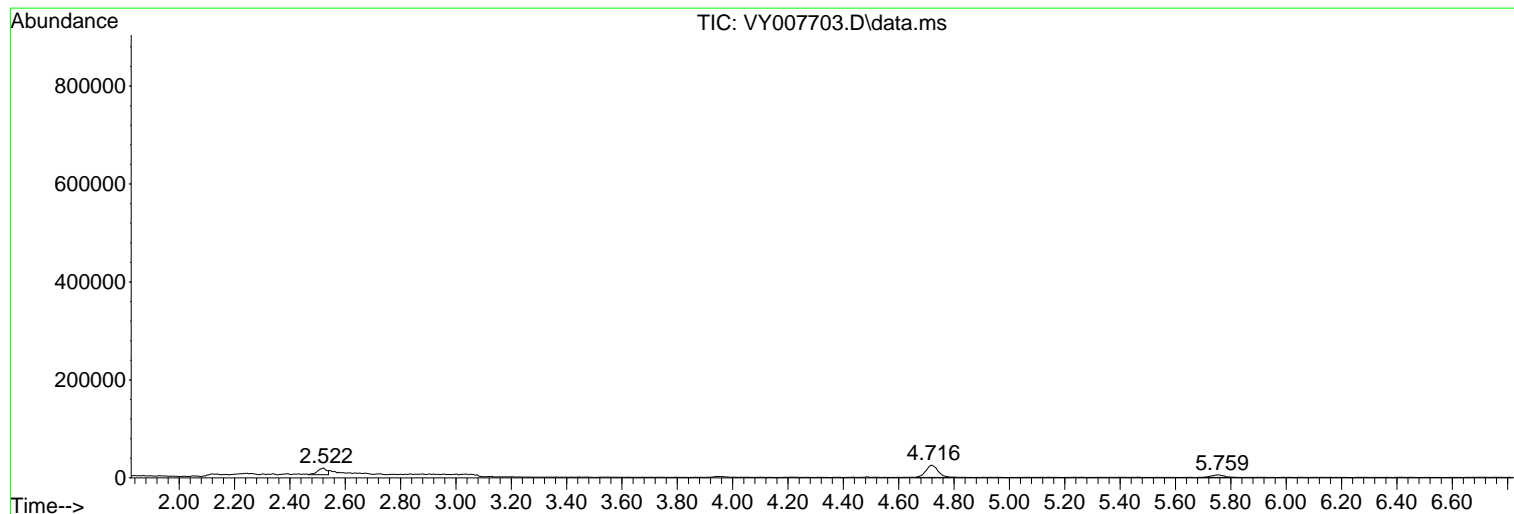
Sum of corrected areas: 8448433

Data Path : Z:\voasrv\HPCHEM1\MSVOA_Y\Data\VY030322\
Data File : VY007703.D
Acq On : 03 Mar 2022 14:45
Operator : SY/MD
Sample : N1751-05
Misc : 5.08g/5.0mL/MSVOA_Y/SOIL
ALS Vial : 14 Sample Multiplier: 1

Instrument :
MSVOA_Y
ClientSampleId :
DUM-13

Quant Method : Z:\voasrv\HPCHEM1\MSVOA_Y\methods\82Y022822S.M
Quant Title : SW846 8260

TIC Library : C:\Database\NIST20.L
TIC Integration Parameters: LSCINT.P



Library Search Compound Report

Data Path : Z:\voasrv\HPCHEM1\MSVOA_Y\Data\VY030322\
Data File : VY007703.D
Acq On : 03 Mar 2022 14:45
Operator : SY/MD
Sample : N1751-05
Misc : 5.08g/5.0mL/MSVOA_Y/SOIL
ALS Vial : 14 Sample Multiplier: 1

Instrument :
MSVOA_Y
ClientSampleId :
DUM-13

Quant Method : Z:\voasrv\HPCHEM1\MSVOA_Y\methods\82Y022822S.M
Quant Title : SW846 8260

TIC Library : C:\Database\NIST20.L
TIC Integration Parameters: LSCINT.P

No Library Search Compounds Detected

Data Path : Z:\voasrv\HPCHEM1\MSVOA_Y\Data\VY030322\
Data File : VY007703.D
Acq On : 03 Mar 2022 14:45
Operator : SY/MD
Sample : N1751-05
Misc : 5.08g/5.0mL/MSVOA_Y/SOIL
ALS Vial : 14 Sample Multiplier: 1

Instrument :
MSVOA_Y
ClientSampleId :
DUM-13

Quant Method : Z:\voasrv\HPCHEM1\MSVOA_Y\methods\82Y022822S.M
Quant Title : SW846 8260

TIC Library : C:\Database\NIST0.L
TIC Integration Parameters: LSCINT.P

| TIC Top Hit name | RT | EstConc | Units | Response | # | RT | Resp | Conc |
|------------------|----|---------|-------|----------|---|----|------|------|
|------------------|----|---------|-------|----------|---|----|------|------|
