

Data Path : Z:\voasrv\HPCHEM1\MSVOA_Y\Data\VY030722\
 Data File : VY007761.D
 Acq On : 07 Mar 2022 16:09
 Operator : SY/MD
 Sample : VY0307SBL01
 Misc : 5.00g/5.0mL/MSVOA_Y/SOIL
 ALS Vial : 4 Sample Multiplier: 1

Instrument :
 MSVOA_Y
 ClientSampleId :
 VY0307SBL01

Integration Parameters: RTEINT.P

Integrator: RTE
 Smoothing : ON Filtering: 5
 Sampling : 1 Min Area: 3 % of largest Peak
 Start Thrs: 0.2 Max Peaks: 100
 Stop Thrs : 0 Peak Location: TOP

If leading or trailing edge < 100 prefer < Baseline drop else tangent >
 Peak separation: 5

Method : Z:\voasrv\HPCHEM1\MSVOA_Y\methods\82Y022822S.M
 Title : SW846 8260

Signal : TIC: VY007761.D\data.ms

peak #	R.T. min	first scan	max scan	last scan	PK TY	peak height	corr. area	corr. % max.	% of total
1	2.516	106	114	121	rBV8	8583	27306	1.84%	0.347%
2	3.046	199	201	211	rVB4	7235	16645	1.12%	0.212%
3	4.716	464	475	489	rBV3	29613	95142	6.42%	1.211%
4	5.741	632	643	654	rBV4	11555	38746	2.61%	0.493%
5	7.716	958	967	973	rBV	212589	523328	35.30%	6.659%
6	7.789	973	979	995	rVB	350047	792296	53.44%	10.081%
7	8.136	1027	1036	1046	rBV	207412	465751	31.41%	5.926%
8	8.685	1117	1126	1140	rBV	535279	1055316	71.18%	13.428%
9	10.179	1363	1371	1380	rBV	883082	1482591	100.00%	18.865%
10	11.490	1577	1586	1599	rBV	791859	1265131	85.33%	16.098%
11	12.483	1738	1749	1756	rBV	575794	929251	62.68%	11.824%
12	13.422	1897	1903	1910	rBV	739834	1146118	77.31%	14.583%
13	15.391	2219	2226	2229	rBV	11926	21494	1.45%	0.273%

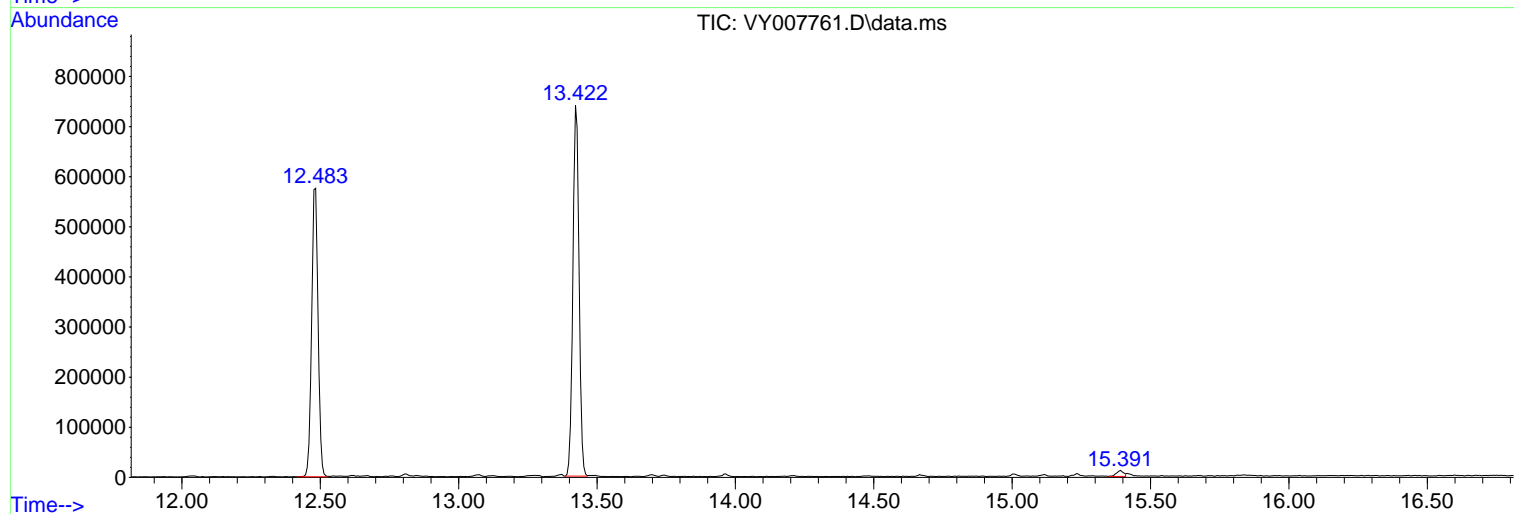
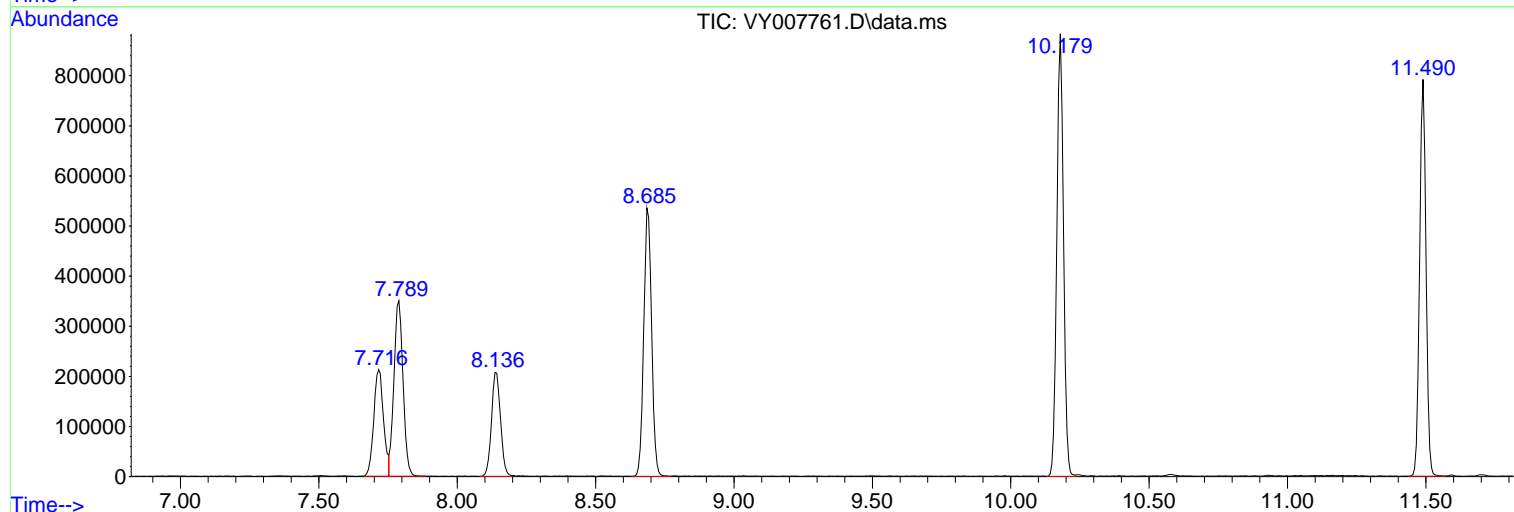
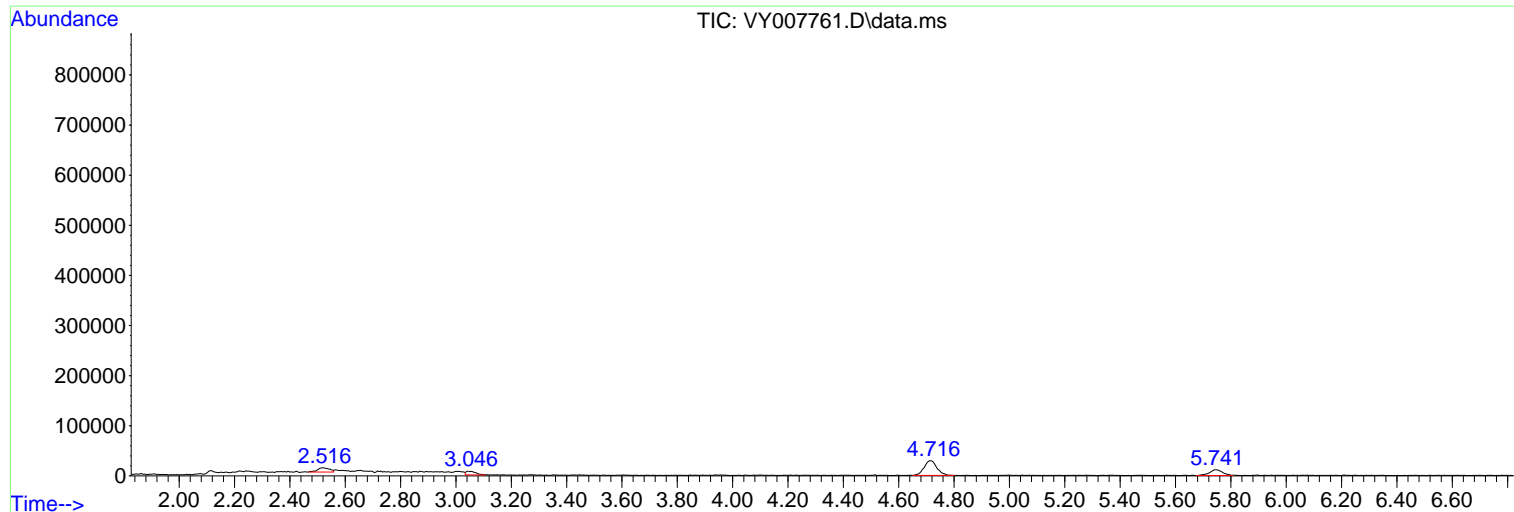
Sum of corrected areas: 7859115

Data Path : Z:\voasrv\HPCHEM1\MSVOA_Y\Data\VY030722\
Data File : VY007761.D
Acq On : 07 Mar 2022 16:09
Operator : SY/MD
Sample : VY0307SBL01
Misc : 5.00g/5.0mL/MSVOA_Y/SOIL
ALS Vial : 4 Sample Multiplier: 1

Instrument :
MSVOA_Y
ClientSampleId :
VY0307SBL01

Quant Method : Z:\voasrv\HPCHEM1\MSVOA_Y\methods\82Y022822S.M
Quant Title : SW846 8260

TIC Library : C:\Database\NIST20.L
TIC Integration Parameters: LSCINT.P



Library Search Compound Report

Data Path : Z:\voasrv\HPCHEM1\MSVOA_Y\Data\VY030722\
Data File : VY007761.D
Acq On : 07 Mar 2022 16:09
Operator : SY/MD
Sample : VY0307SBL01
Misc : 5.00g/5.0mL/MSVOA_Y/SOIL
ALS Vial : 4 Sample Multiplier: 1

Instrument :
MSVOA_Y
ClientSampleId :
VY0307SBL01

Quant Method : Z:\voasrv\HPCHEM1\MSVOA_Y\methods\82Y022822S.M
Quant Title : SW846 8260

TIC Library : C:\Database\NIST20.L
TIC Integration Parameters: LSCINT.P

No Library Search Compounds Detected

Data Path : Z:\voasrv\HPCHEM1\MSVOA_Y\Data\VY030722\
Data File : VY007761.D
Acq On : 07 Mar 2022 16:09
Operator : SY/MD
Sample : VY0307SBL01
Misc : 5.00g/5.0mL/MSVOA_Y/SOIL
ALS Vial : 4 Sample Multiplier: 1

Instrument :
MSVOA_Y
ClientSampleId :
VY0307SBL01

Quant Method : Z:\voasrv\HPCHEM1\MSVOA_Y\methods\82Y022822S.M
Quant Title : SW846 8260

TIC Library : C:\Database\NIST0.L
TIC Integration Parameters: LSCINT.P

TIC Top Hit name	RT	EstConc	Units	Response	#	RT	Resp	Conc
------------------	----	---------	-------	----------	---	----	------	------
