

Data Path : Z:\voasrv\HPCHEM1\MSVOA_Y\Data\VY030725\
 Data File : VY021457.D
 Acq On : 07 Mar 2025 13:42
 Operator : SY/MD
 Sample : Q1463-02
 Misc : 6.31g/5.0mL/MSVOA_Y/SOIL/B
 ALS Vial : 8 Sample Multiplier: 1

Instrument :
 MSVOA_Y
 ClientSampleId :
 T2

Quant Time: Mar 07 22:01:05 2025
 Quant Method : Z:\voasrv\HPCHEM1\MSVOA_Y\methods\82Y030425S.M
 Quant Title : SW846 8260
 QLast Update : Wed Mar 05 12:42:45 2025
 Response via : Initial Calibration

Compound	R.T.	QIon	Response	Conc	Units	Dev(Min)

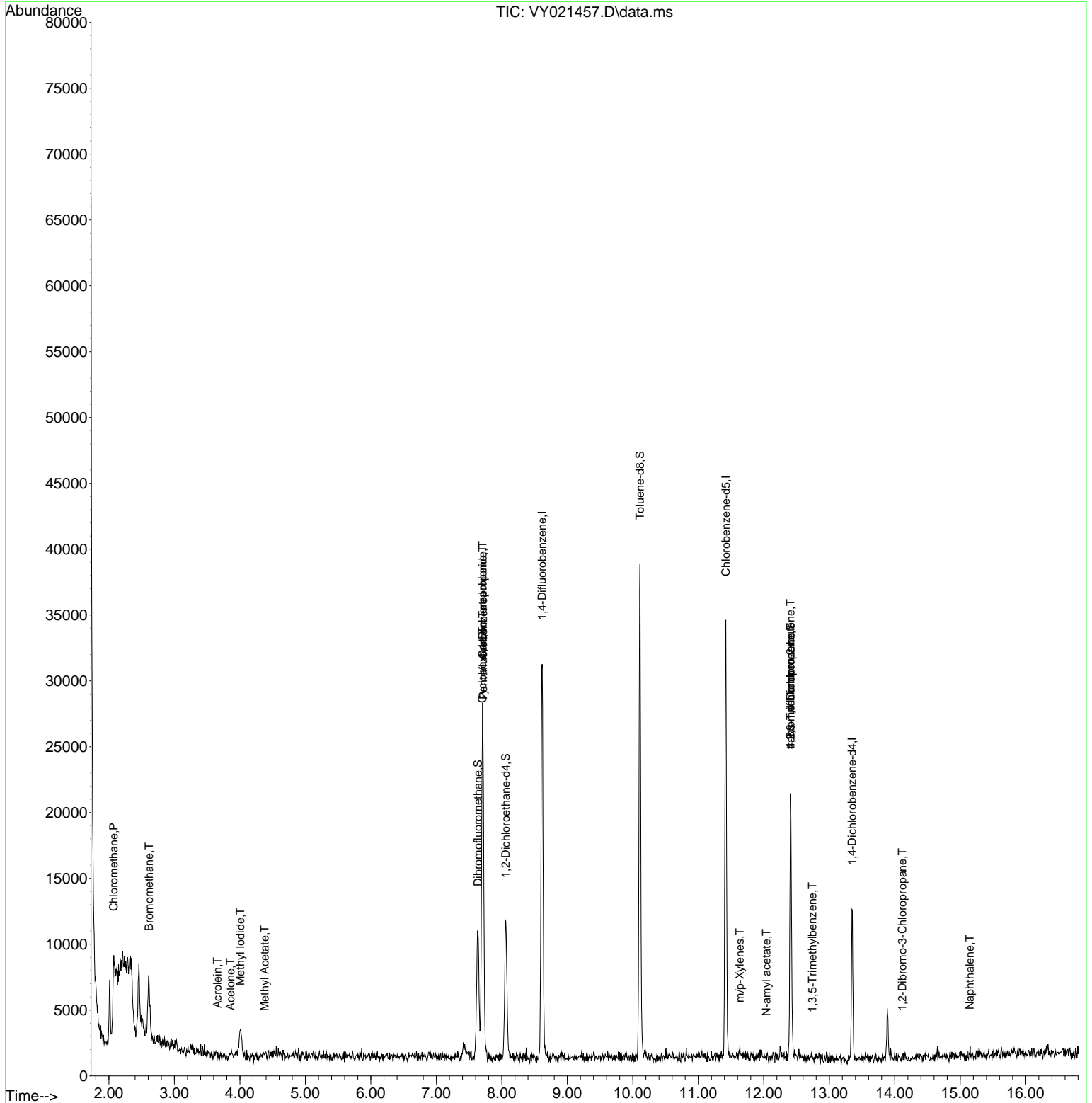
Internal Standards						
1) Pentafluorobenzene	7.713	168	20508	50.000	ug/l	0.00
34) 1,4-Difluorobenzene	8.616	114	25440	50.000	ug/l	0.00
63) Chlorobenzene-d5	11.420	117	16741	50.000	ug/l	0.00
72) 1,4-Dichlorobenzene-d4	13.346	152	2730	50.000	ug/l	0.00
System Monitoring Compounds						
33) 1,2-Dichloroethane-d4	8.061	65	8731	40.280	ug/l	0.00
Spiked Amount	50.000	Range	50 - 163	Recovery	=	80.560%
35) Dibromofluoromethane	7.634	113	7109	42.513	ug/l	0.00
Spiked Amount	50.000	Range	54 - 147	Recovery	=	85.020%
50) Toluene-d8	10.109	98	24940	39.390	ug/l	0.00
Spiked Amount	50.000	Range	58 - 134	Recovery	=	78.780%
62) 4-Bromofluorobenzene	12.408	95	5178	24.042	ug/l	0.00
Spiked Amount	50.000	Range	30 - 143	Recovery	=	48.080%
Target Compounds						
						Qvalue
3) Chloromethane	2.074	50	2323	8.755	ug/l	100
5) Bromomethane	2.611	94	2912	13.896	ug/l #	80
10) Methyl Iodide	4.007	142	4224	17.984	ug/l	95
11) Tert butyl alcohol	4.848	59	60	Below Cal	#	72
13) Acrolein	3.659	56	25	2.268	ug/l	96
16) Acetone	3.854	43	284	6.007	ug/l #	69
18) Methyl Acetate	4.378	43	204	1.945	ug/l #	51
31) Cyclohexane	7.701	56	592	1.458	ug/l #	64
36) 1,1-Dichloropropene	7.707	75	1681	6.422	ug/l #	41
38) Carbon Tetrachloride	7.707	117	2101	6.979	ug/l #	17
68) m/p-Xylenes	11.633	106	286	1.086	ug/l	82
74) N-amyl acetate	12.042	43	96	2.056	ug/l #	42
76) 1,2,3-Trichloropropane	12.408	75	2669	97.020	ug/l #	100
80) 1,3,5-Trimethylbenzene	12.743	105	248	1.419	ug/l #	28
81) trans-1,4-Dichloro-2-b...	12.408	75	2669	220.557	ug/l #	9
92) 1,2-Dibromo-3-Chloropr...	14.115	75	20	3.518	ug/l #	1
95) Naphthalene	15.145	128	246	4.756	ug/l #	66

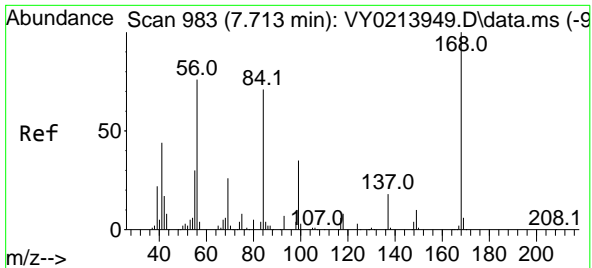
(#) = qualifier out of range (m) = manual integration (+) = signals summed

Data Path : Z:\voasrv\HPCHEM1\MSVOA_Y\Data\VY030725\
 Data File : VY021457.D
 Acq On : 07 Mar 2025 13:42
 Operator : SY/MD
 Sample : Q1463-02
 Misc : 6.31g/5.0mL/MSVOA_Y/SOIL/B
 ALS Vial : 8 Sample Multiplier: 1

Instrument :
 MSVOA_Y
 ClientSampleId :
 T2

Quant Time: Mar 07 22:01:05 2025
 Quant Method : Z:\voasrv\HPCHEM1\MSVOA_Y\methods\82Y030425S.M
 Quant Title : SW846 8260
 QLast Update : Wed Mar 05 12:42:45 2025
 Response via : Initial Calibration

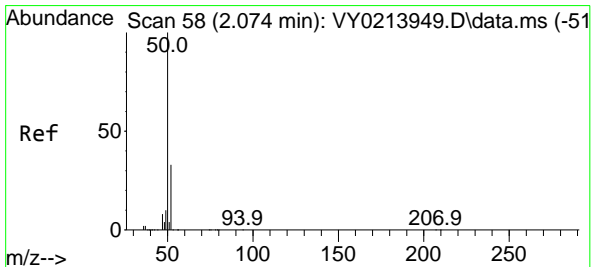
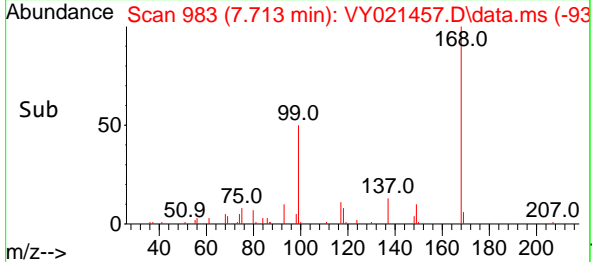
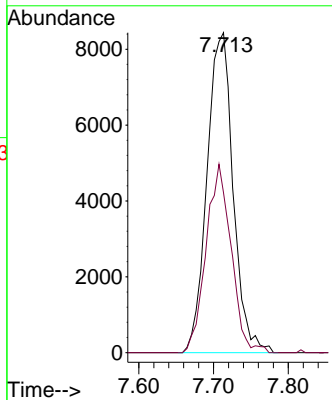
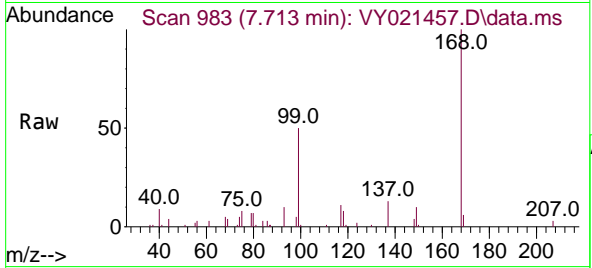




#1
 Pentafluorobenzene
 Concen: 50.000 ug/l
 RT: 7.713 min Scan# 91
 Delta R.T. 0.000 min
 Lab File: VY021457.D
 Acq: 07 Mar 2025 13:42

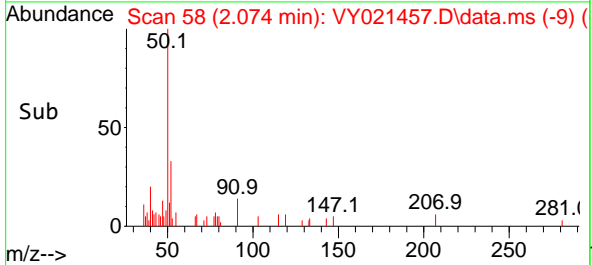
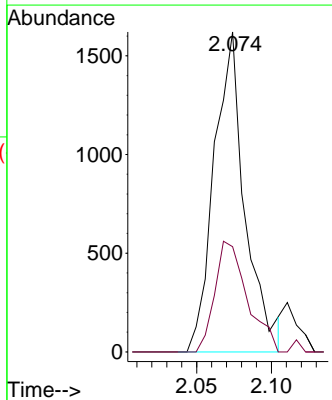
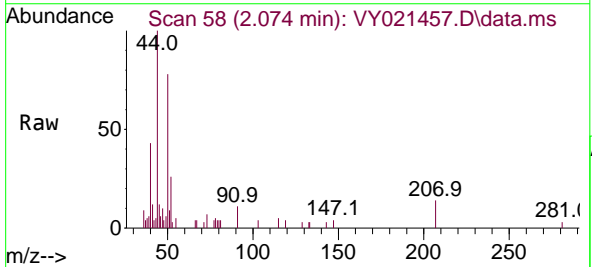
Instrument :
 MSVOA_Y
 ClientSampleId :
 T2

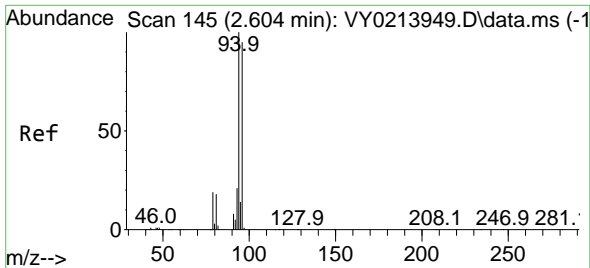
Tgt Ion:168 Resp: 20508
 Ion Ratio Lower Upper
 168 100
 99 50.1 46.0 69.0



#3
 Chloromethane
 Concen: 8.755 ug/l
 RT: 2.074 min Scan# 58
 Delta R.T. 0.000 min
 Lab File: VY021457.D
 Acq: 07 Mar 2025 13:42

Tgt Ion: 50 Resp: 2323
 Ion Ratio Lower Upper
 50 100
 52 32.9 26.2 39.2

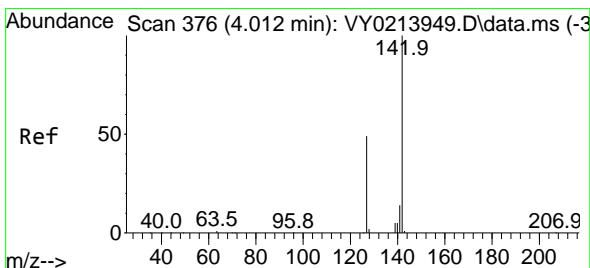
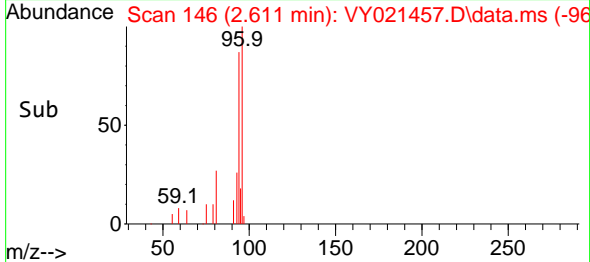
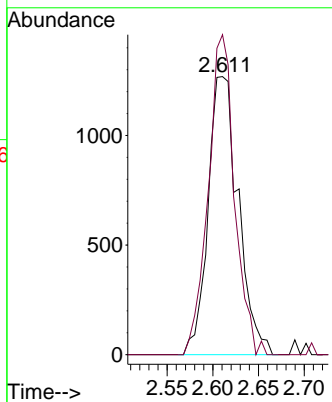
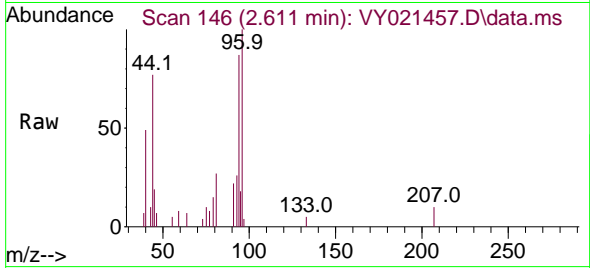




#5
 Bromomethane
 Concen: 13.896 ug/l
 RT: 2.611 min Scan# 145
 Delta R.T. 0.006 min
 Lab File: VY021457.D
 Acq: 07 Mar 2025 13:42

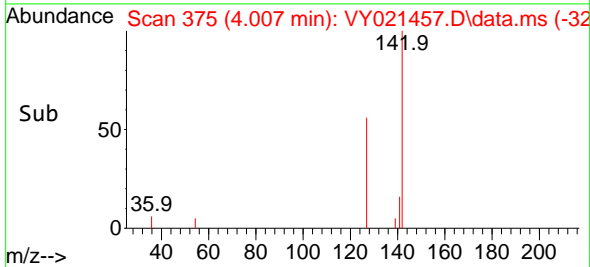
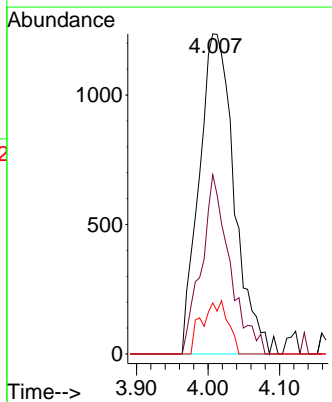
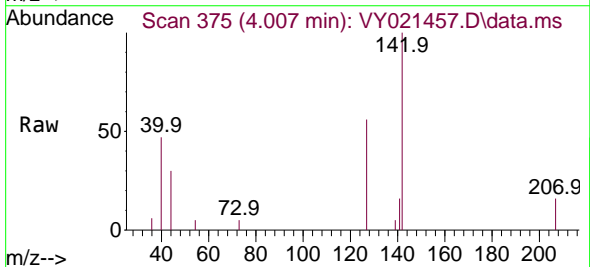
Instrument : MSVOA_Y
 ClientSampleId : T2

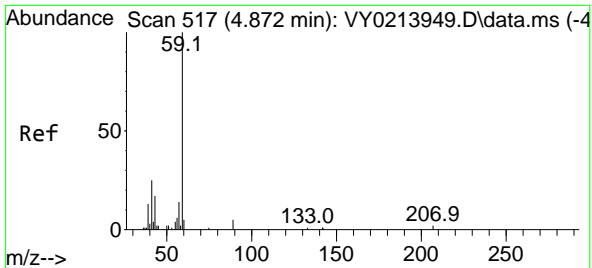
Tgt Ion: 94 Resp: 2912
 Ion Ratio Lower Upper
 94 100
 96 115.1 76.3 114.5#



#10
 Methyl Iodide
 Concen: 17.984 ug/l
 RT: 4.007 min Scan# 375
 Delta R.T. -0.006 min
 Lab File: VY021457.D
 Acq: 07 Mar 2025 13:42

Tgt Ion:142 Resp: 4224
 Ion Ratio Lower Upper
 142 100
 127 45.3 39.1 58.7
 141 12.3 11.8 17.6

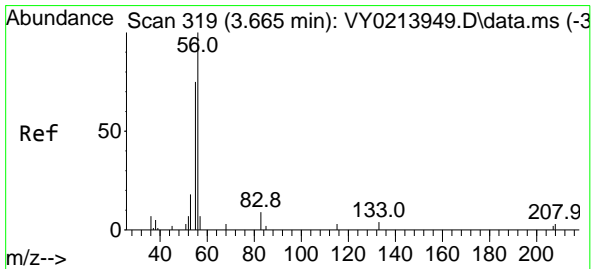
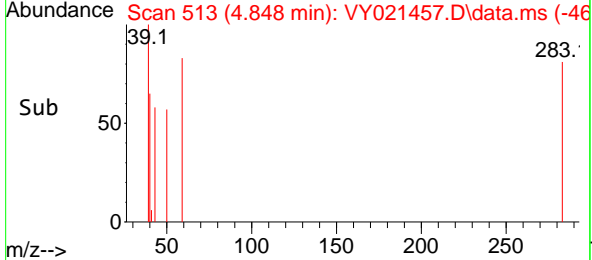
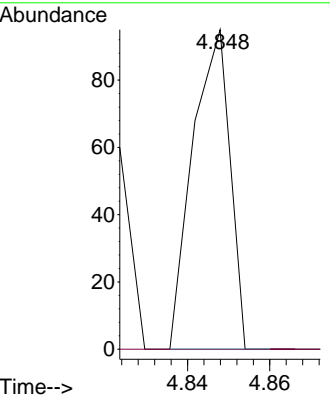
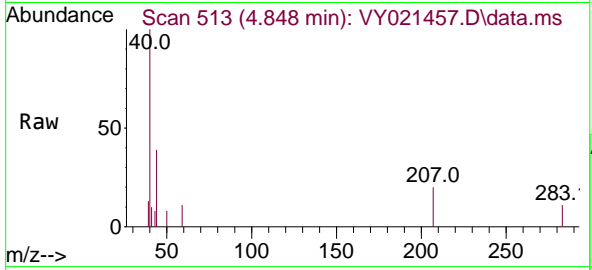




#11
 Tert butyl alcohol
 Concen: Below Cal
 RT: 4.848 min Scan# 51
 Delta R.T. -0.024 min
 Lab File: VY021457.D
 Acq: 07 Mar 2025 13:42

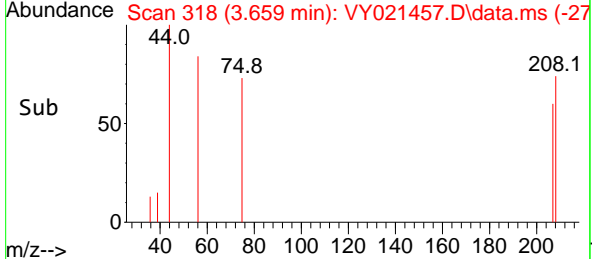
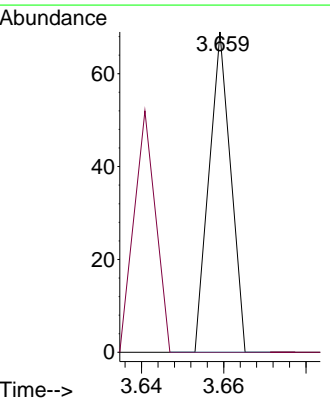
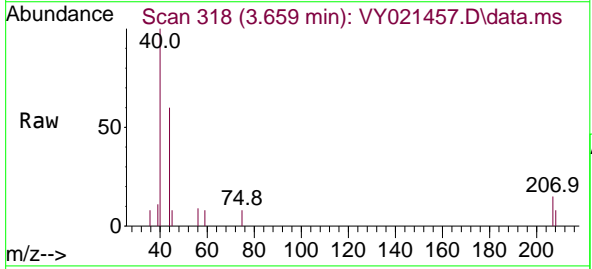
Instrument : MSVOA_Y
 ClientSampleId : T2

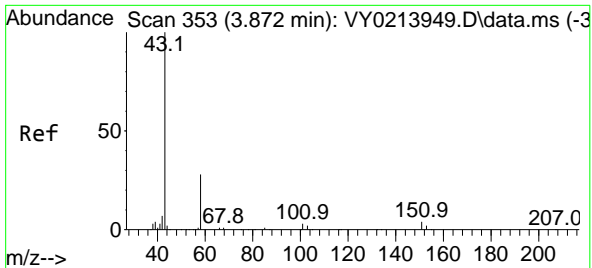
Tgt Ion: 59 Resp: 60
 Ion Ratio Lower Upper
 59 100
 57 0.0 8.2 12.4#



#13
 Acrolein
 Concen: 2.268 ug/l
 RT: 3.659 min Scan# 318
 Delta R.T. -0.006 min
 Lab File: VY021457.D
 Acq: 07 Mar 2025 13:42

Tgt Ion: 56 Resp: 25
 Ion Ratio Lower Upper
 56 100
 55 76.0 63.4 95.2

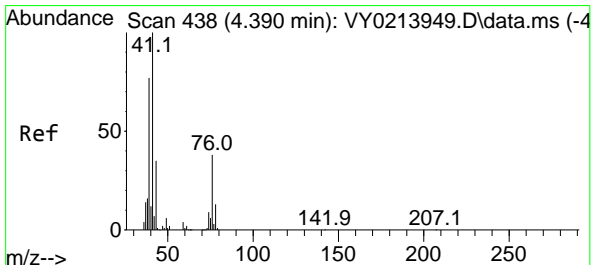
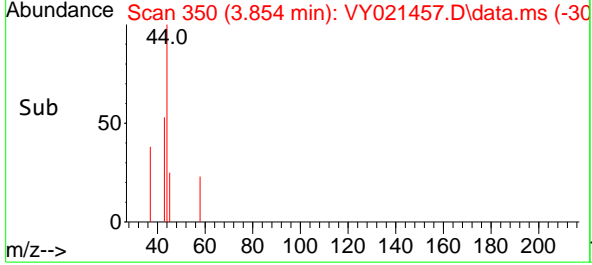
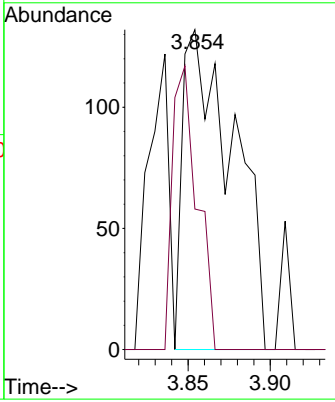
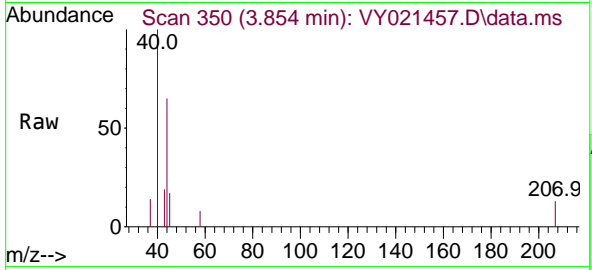




#16
 Acetone
 Concen: 6.007 ug/l
 RT: 3.854 min Scan# 311
 Delta R.T. -0.018 min
 Lab File: VY021457.D
 Acq: 07 Mar 2025 13:42

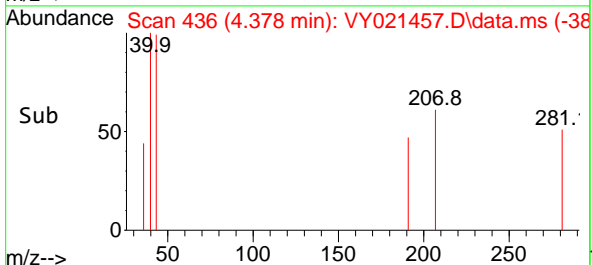
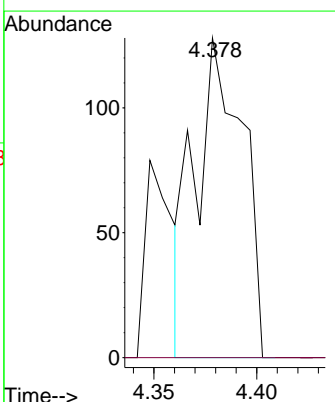
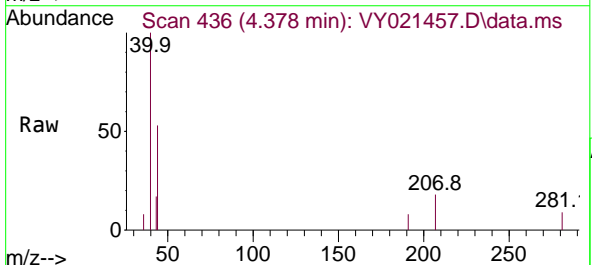
Instrument : MSVOA_Y
 ClientSampleId : T2

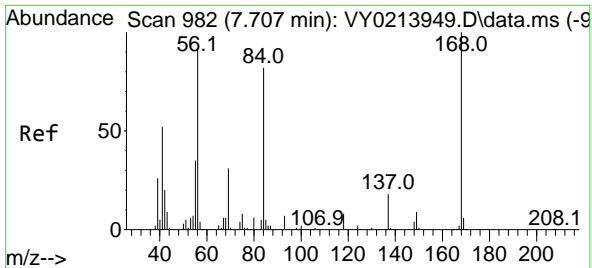
Tgt Ion: 43 Resp: 284
 Ion Ratio Lower Upper
 43 100
 58 43.9 22.1 33.1#



#18
 Methyl Acetate
 Concen: 1.945 ug/l
 RT: 4.378 min Scan# 436
 Delta R.T. -0.012 min
 Lab File: VY021457.D
 Acq: 07 Mar 2025 13:42

Tgt Ion: 43 Resp: 204
 Ion Ratio Lower Upper
 43 100
 74 0.0 19.4 29.0#

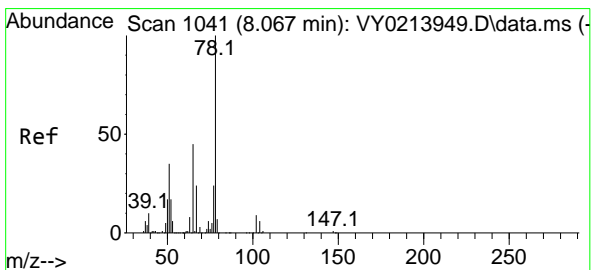
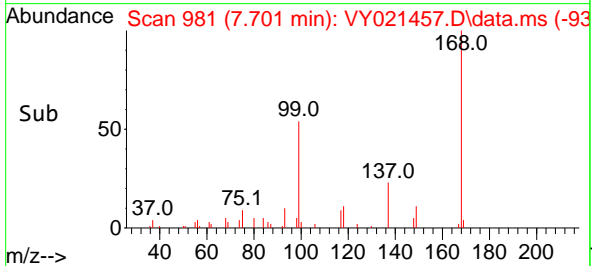
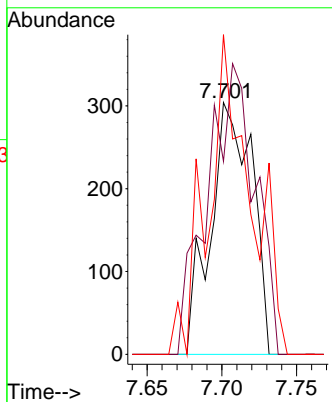
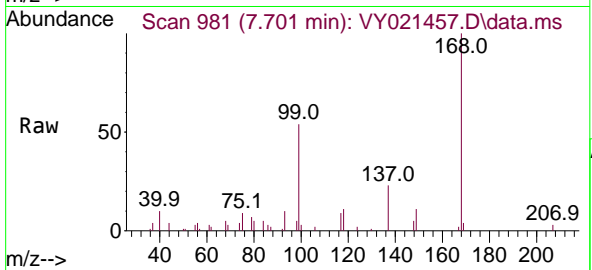




#31
 Cyclohexane
 Concen: 1.458 ug/l
 RT: 7.701 min Scan# 91
 Delta R.T. -0.006 min
 Lab File: VY021457.D
 Acq: 07 Mar 2025 13:42

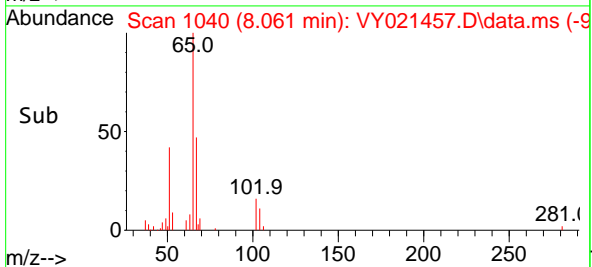
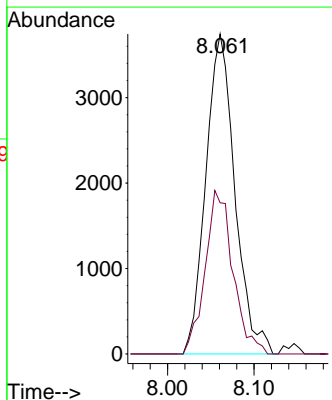
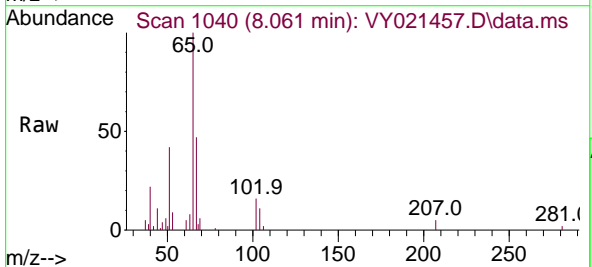
Instrument :
 MSVOA_Y
 ClientSampleId :
 T2

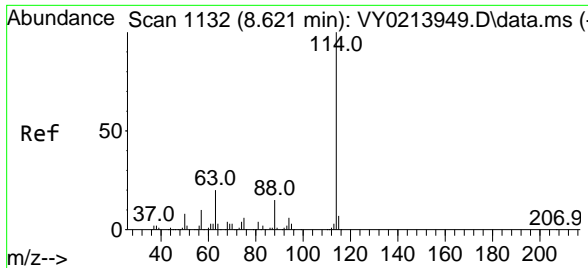
Tgt Ion	Resp	Lower	Upper
56	100		
69	76.6	27.0	40.4#
84	108.9	71.1	106.7#



#33
 1,2-Dichloroethane-d4
 Concen: 40.280 ug/l
 RT: 8.061 min Scan# 1040
 Delta R.T. -0.006 min
 Lab File: VY021457.D
 Acq: 07 Mar 2025 13:42

Tgt Ion	Resp	Lower	Upper
65	100		
67	48.8	0.0	102.8

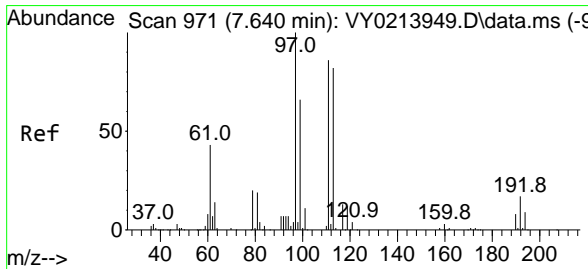
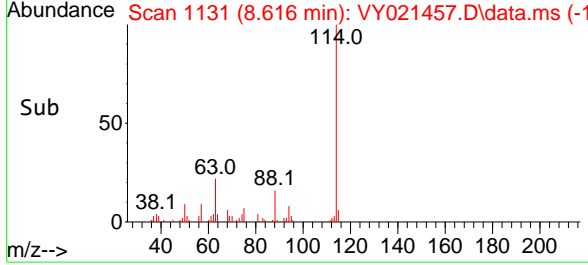
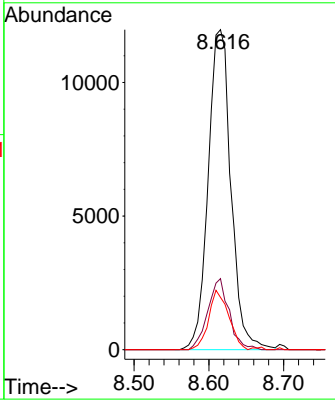
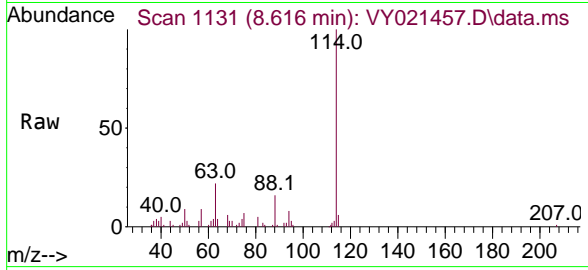




#34
 1,4-Difluorobenzene
 Concen: 50.000 ug/l
 RT: 8.616 min Scan# 1131
 Delta R.T. -0.006 min
 Lab File: VY021457.D
 Acq: 07 Mar 2025 13:42

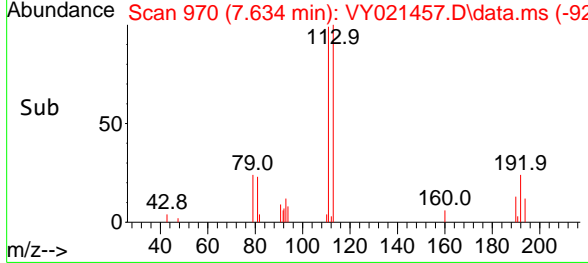
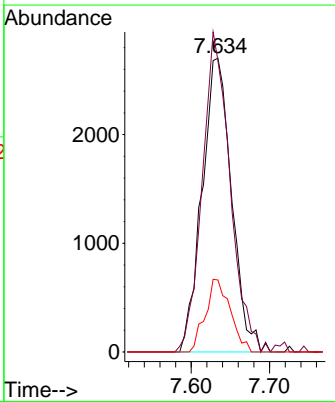
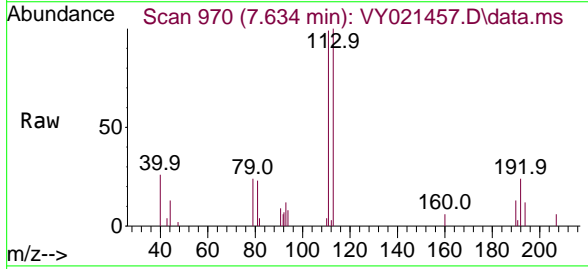
Instrument : MSVOA_Y
 ClientSampleId : T2

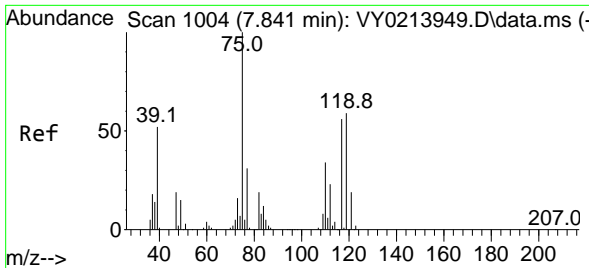
Tgt Ion	Resp	Lower	Upper
114	100		
63	22.2	0.0	40.8
88	16.4	0.0	30.8



#35
 Dibromofluoromethane
 Concen: 42.513 ug/l
 RT: 7.634 min Scan# 970
 Delta R.T. -0.006 min
 Lab File: VY021457.D
 Acq: 07 Mar 2025 13:42

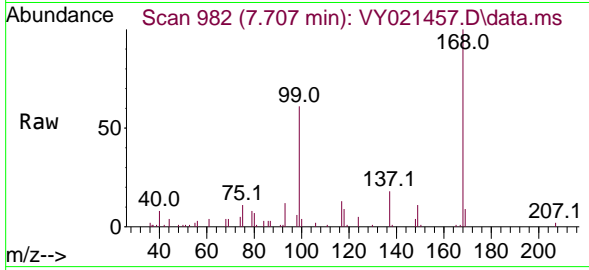
Tgt Ion	Resp	Lower	Upper
113	100		
111	101.9	82.0	123.0
192	20.8	15.9	23.9





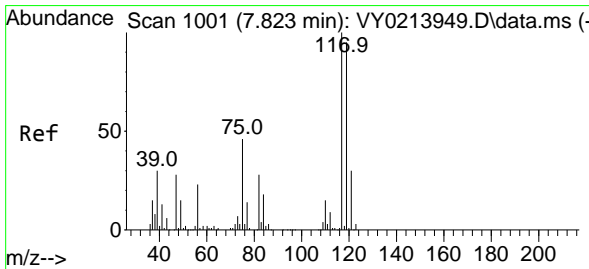
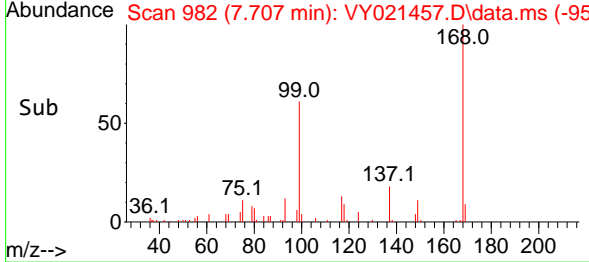
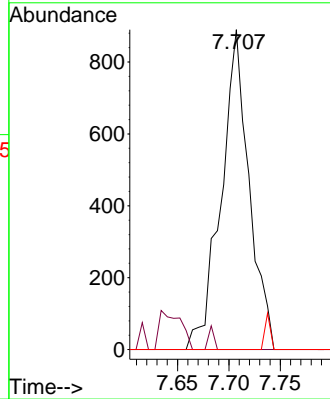
#36
 1,1-Dichloropropene
 Concen: 6.422 ug/l
 RT: 7.707 min Scan# 982
 Delta R.T. -0.134 min
 Lab File: VY021457.D
 Acq: 07 Mar 2025 13:42

Instrument : MSVOA_Y
 ClientSampleId : T2



Tgt Ion: 75 Resp: 1681

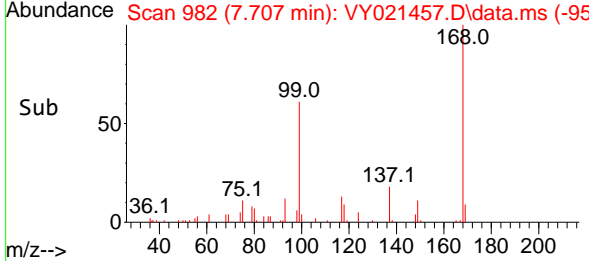
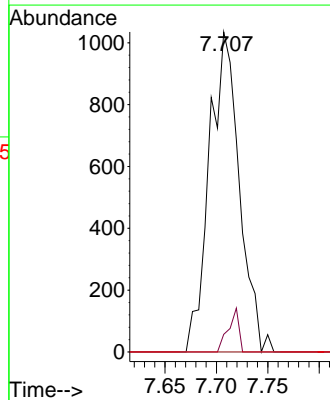
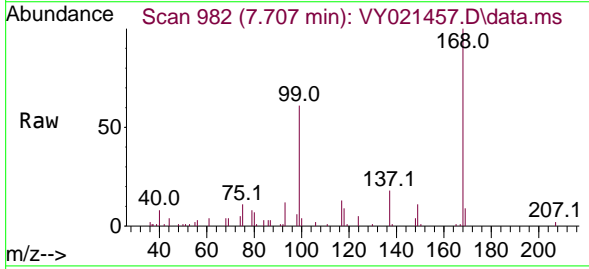
Ion	Ratio	Lower	Upper
75	100		
110	0.0	17.3	51.7#
77	0.0	25.4	38.2#

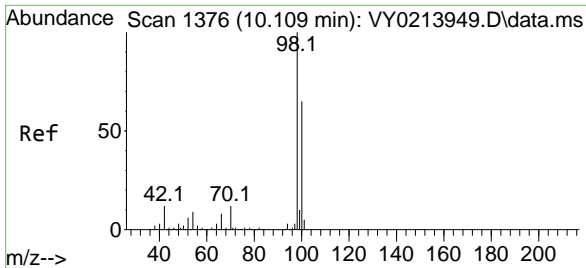


#38
 Carbon Tetrachloride
 Concen: 6.979 ug/l
 RT: 7.707 min Scan# 982
 Delta R.T. -0.116 min
 Lab File: VY021457.D
 Acq: 07 Mar 2025 13:42

Tgt Ion: 117 Resp: 2101

Ion	Ratio	Lower	Upper
117	100		
119	5.5	75.8	113.8#
121	0.0	23.9	35.9#

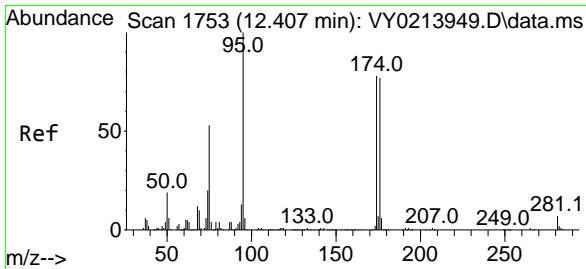
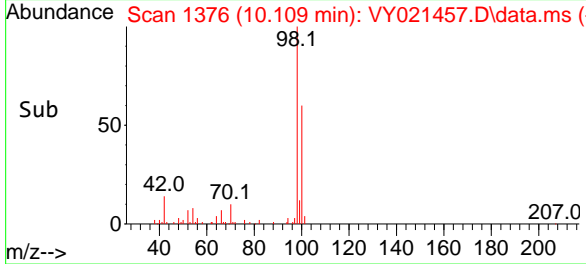
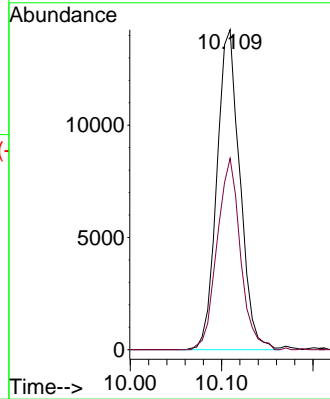
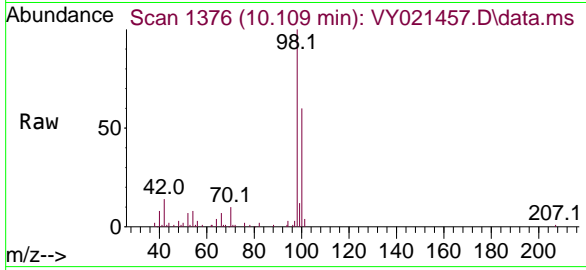




#50
 Toluene-d8
 Concen: 39.390 ug/l
 RT: 10.109 min Scan# 11
 Delta R.T. 0.000 min
 Lab File: VY021457.D
 Acq: 07 Mar 2025 13:42

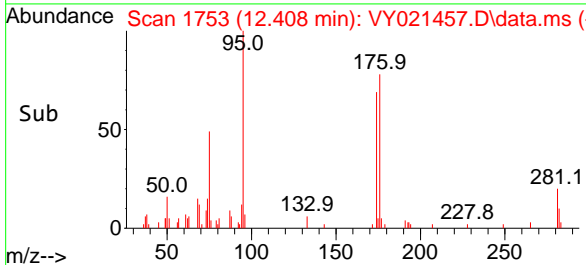
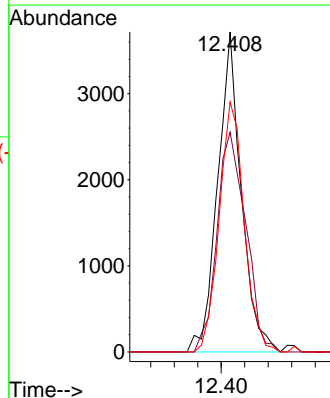
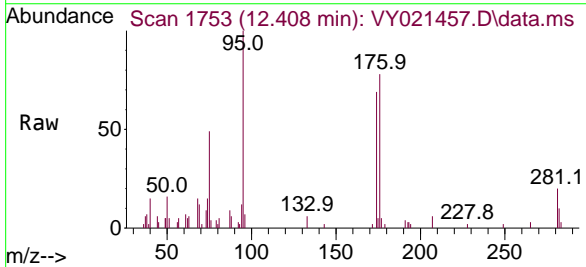
Instrument :
 MSVOA_Y
 ClientSampleId :
 T2

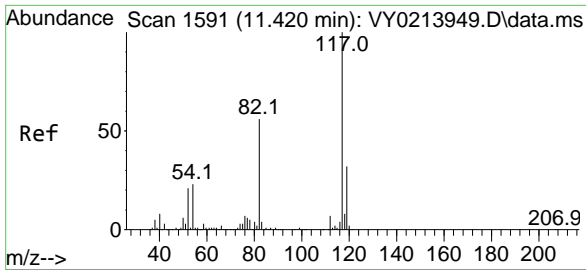
Tgt Ion: 98 Resp: 24940
 Ion Ratio Lower Upper
 98 100
 100 60.6 52.1 78.1



#62
 4-Bromofluorobenzene
 Concen: 24.042 ug/l
 RT: 12.408 min Scan# 1753
 Delta R.T. 0.000 min
 Lab File: VY021457.D
 Acq: 07 Mar 2025 13:42

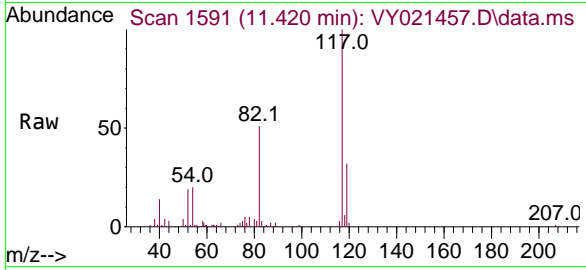
Tgt Ion: 95 Resp: 5178
 Ion Ratio Lower Upper
 95 100
 174 83.8 0.0 165.0
 176 82.7 0.0 160.0





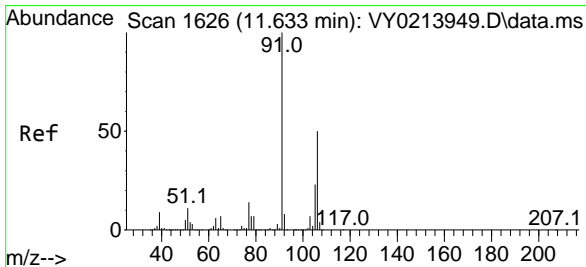
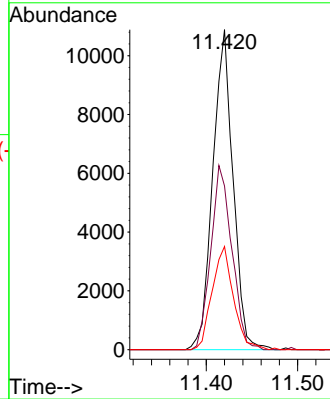
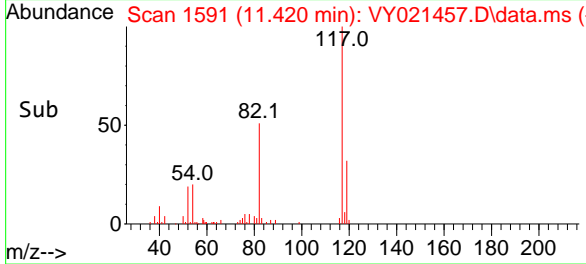
#63
 Chlorobenzene-d5
 Concen: 50.000 ug/l
 RT: 11.420 min Scan# 1177
 Delta R.T. 0.000 min
 Lab File: VY021457.D
 Acq: 07 Mar 2025 13:42

Instrument : MSVOA_Y
 ClientSampleId : T2

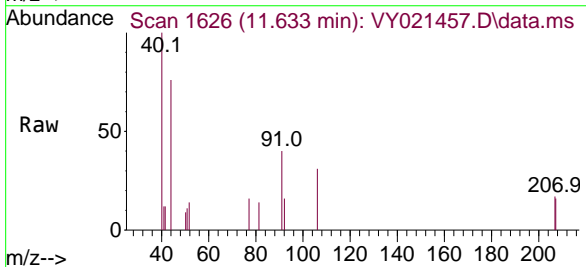


Tgt Ion:117 Resp: 16741

Ion	Ratio	Lower	Upper
117	100		
82	51.1	44.6	67.0
119	32.2	25.4	38.0

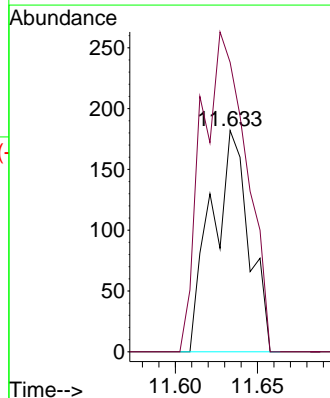
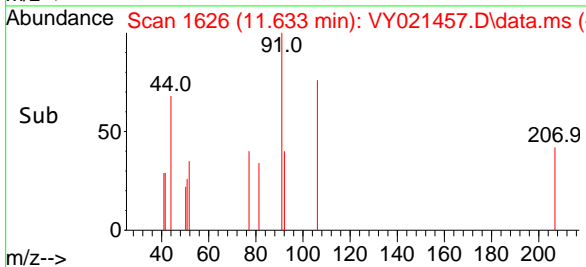


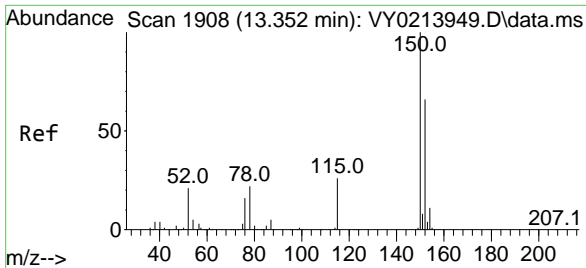
#68
 m/p-Xylenes
 Concen: 1.086 ug/l
 RT: 11.633 min Scan# 1626
 Delta R.T. 0.000 min
 Lab File: VY021457.D
 Acq: 07 Mar 2025 13:42



Tgt Ion:106 Resp: 286

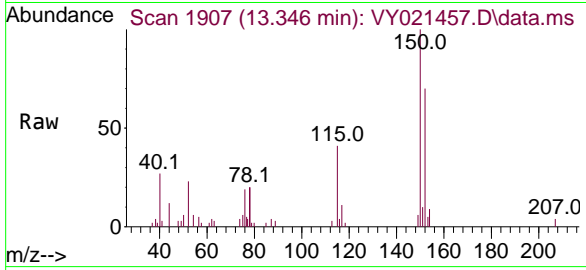
Ion	Ratio	Lower	Upper
106	100		
91	174.1	161.7	242.5



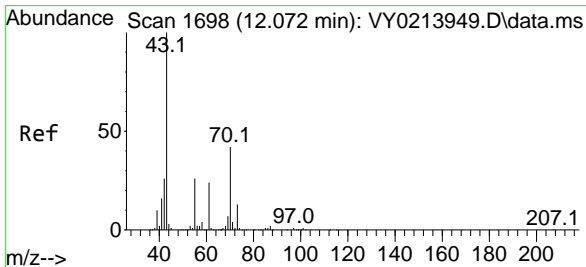
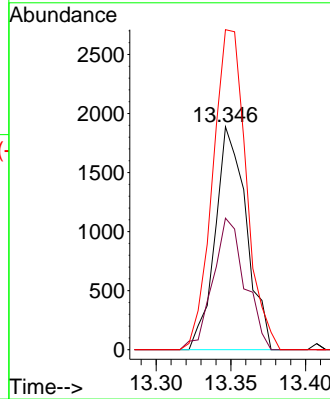
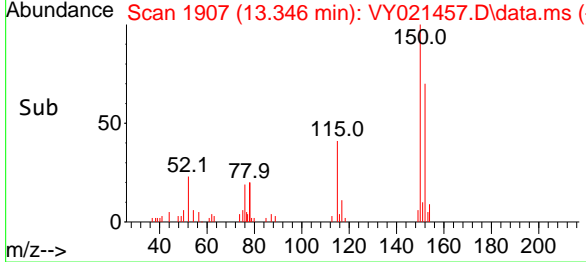


#72
 1,4-Dichlorobenzene-d4
 Concen: 50.000 ug/l
 RT: 13.346 min Scan# 1907
 Delta R.T. -0.006 min
 Lab File: VY021457.D
 Acq: 07 Mar 2025 13:42

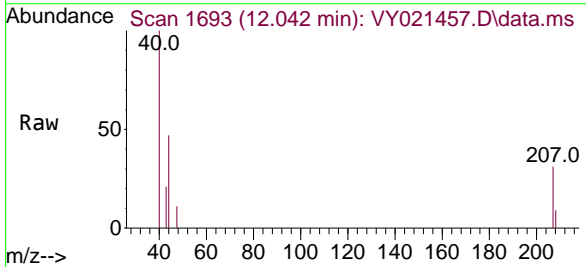
Instrument : MSVOA_Y
 ClientSampleId : T2



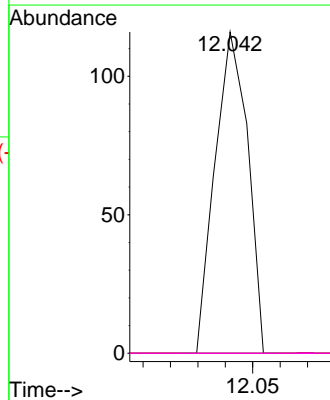
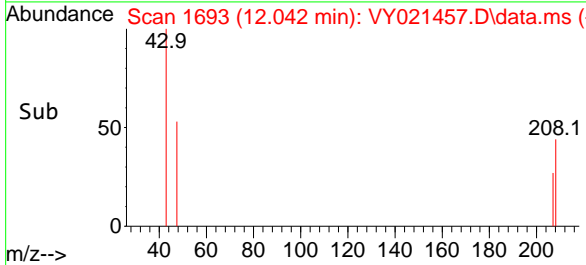
Tgt Ion:152 Resp: 2730
 Ion Ratio Lower Upper
 152 100
 115 60.9 29.0 87.0
 150 155.1 0.0 347.2

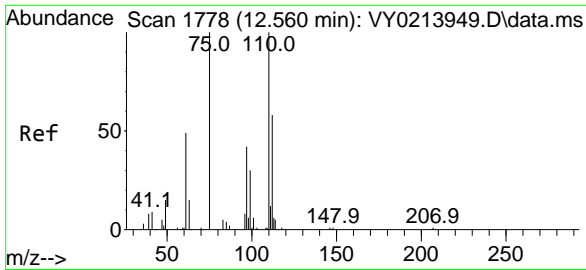


#74
 N-amy1 acetate
 Concen: 2.056 ug/l
 RT: 12.042 min Scan# 1693
 Delta R.T. -0.030 min
 Lab File: VY021457.D
 Acq: 07 Mar 2025 13:42



Tgt Ion: 43 Resp: 96
 Ion Ratio Lower Upper
 43 100
 70 0.0 34.6 51.8#
 55 0.0 21.1 31.7#
 61 0.0 19.4 29.0#

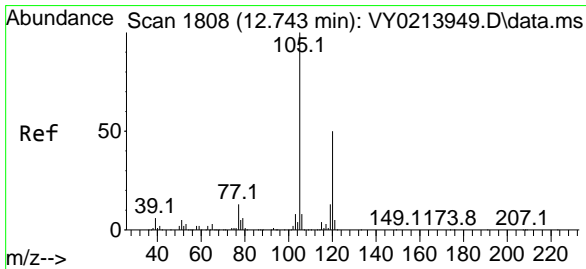
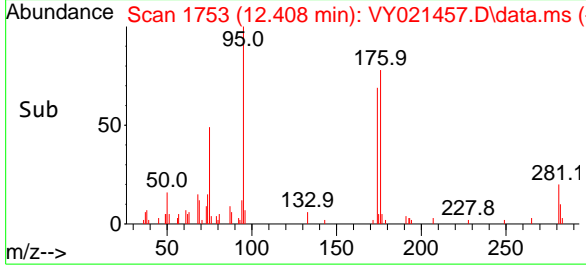
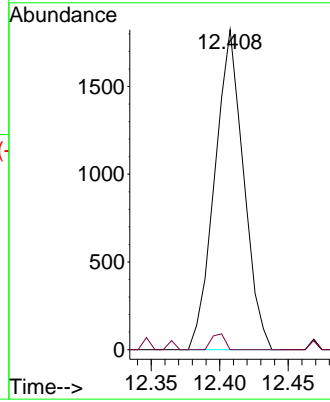
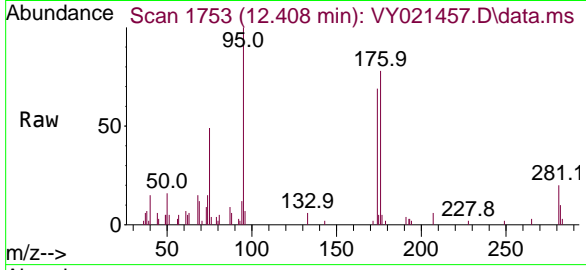




#76
 1,2,3-Trichloropropane
 Concen: 97.020 ug/l
 RT: 12.408 min Scan# 11
 Delta R.T. -0.152 min
 Lab File: VY021457.D
 Acq: 07 Mar 2025 13:42

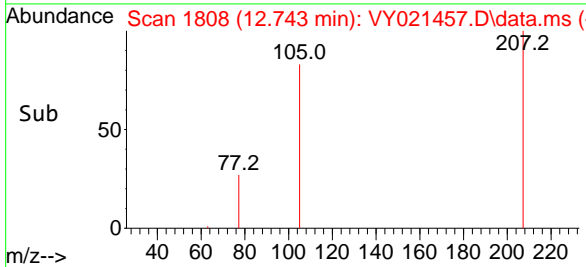
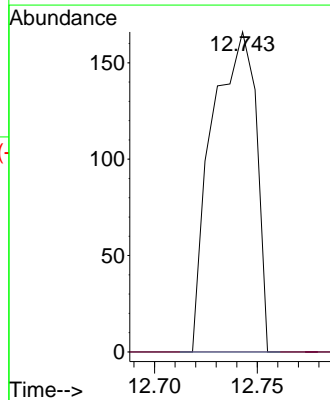
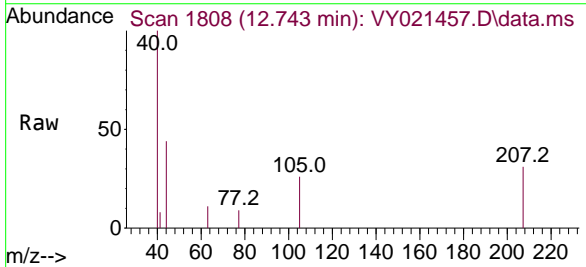
Instrument :
 MSVOA_Y
 ClientSampleId :
 T2

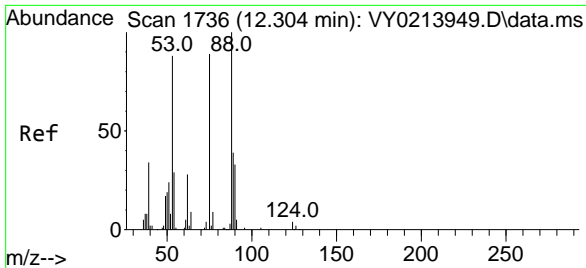
Tgt Ion: 75 Resp: 2669
 Ion Ratio Lower Upper
 75 100
 77 2.3 0.0 0.0#



#80
 1,3,5-Trimethylbenzene
 Concen: 1.419 ug/l
 RT: 12.743 min Scan# 1808
 Delta R.T. 0.000 min
 Lab File: VY021457.D
 Acq: 07 Mar 2025 13:42

Tgt Ion: 105 Resp: 248
 Ion Ratio Lower Upper
 105 100
 120 0.0 24.6 73.6#



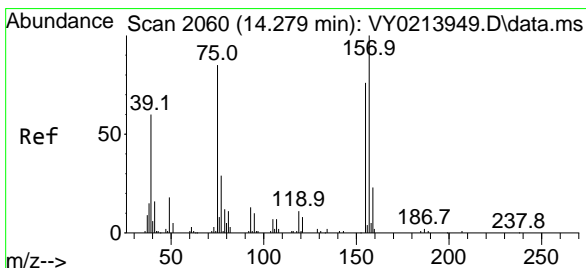
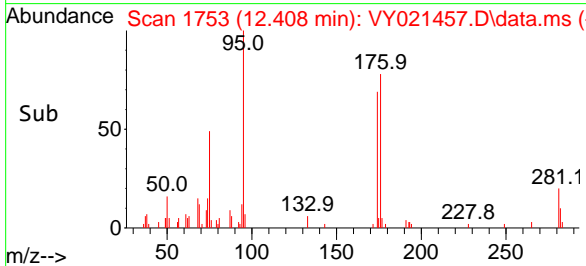
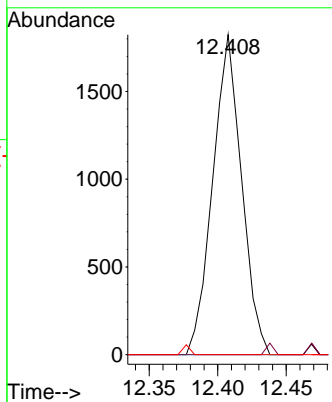
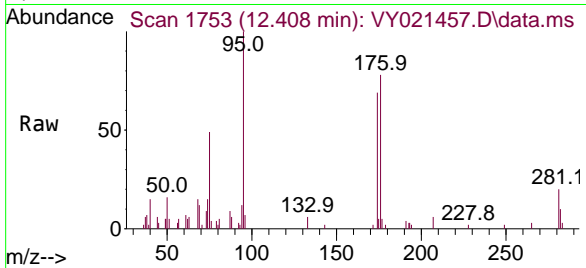


#81
 trans-1,4-Dichloro-2-butene
 Concen: 220.557 ug/l
 RT: 12.408 min Scan# 11
 Delta R.T. 0.104 min
 Lab File: VY021457.D
 Acq: 07 Mar 2025 13:42

Instrument :
 MSVOA_Y
 ClientSampleId :
 T2

Tgt Ion: 75 Resp: 2669

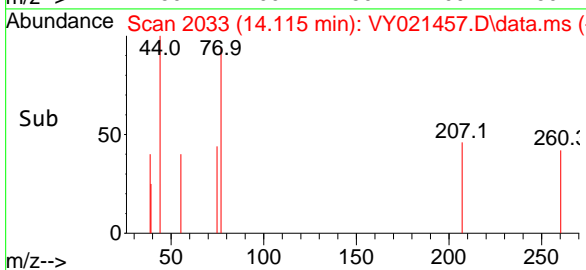
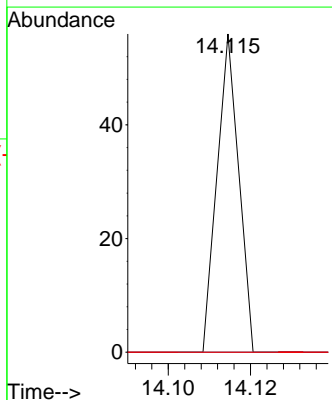
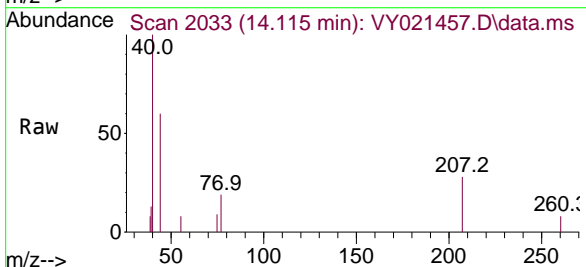
Ion	Ratio	Lower	Upper
75	100		
53	0.0	81.0	121.4#
89	0.0	36.9	55.3#

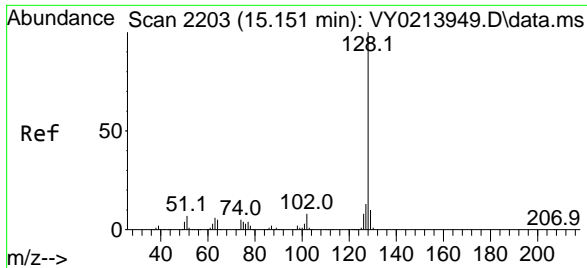


#92
 1,2-Dibromo-3-Chloropropane
 Concen: 3.518 ug/l
 RT: 14.115 min Scan# 2033
 Delta R.T. -0.164 min
 Lab File: VY021457.D
 Acq: 07 Mar 2025 13:42

Tgt Ion: 75 Resp: 20

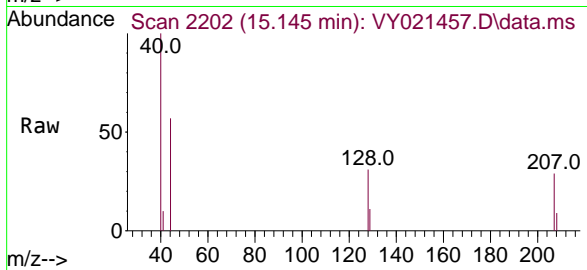
Ion	Ratio	Lower	Upper
75	100		
155	0.0	43.5	130.5#
157	0.0	54.4	163.2#





#95
 Naphthalene
 Concen: 4.756 ug/l
 RT: 15.145 min Scan# 21
 Delta R.T. -0.006 min
 Lab File: VY021457.D
 Acq: 07 Mar 2025 13:42

Instrument :
 MSVOA_Y
 ClientSampleId :
 T2



Tgt Ion:128 Resp: 246

Ion	Ratio	Lower	Upper
128	100		
127	0.0	10.6	15.8#
129	24.4	8.6	13.0#

