

Data Path : Z:\voasrv\HPCHEM1\MSVOA\_Y\Data\VY030725\  
 Data File : VY021466.D  
 Acq On : 07 Mar 2025 17:12  
 Operator : SY/MD  
 Sample : Q1507-01  
 Misc : 5.06g/5.0mL/MSVOA\_Y/SOIL/A  
 ALS Vial : 17 Sample Multiplier: 1

**Instrument :**  
 MSVOA\_Y  
**ClientSampleId :**  
 50-MIDDLESEX-AVE

Quant Time: Mar 07 22:03:08 2025  
 Quant Method : Z:\voasrv\HPCHEM1\MSVOA\_Y\methods\82Y030425S.M  
 Quant Title : SW846 8260  
 QLast Update : Wed Mar 05 12:42:45 2025  
 Response via : Initial Calibration

Compound	R.T.	QIon	Response	Conc	Units	Dev(Min)
Internal Standards						
1) Pentafluorobenzene	0.000	168	0	0.000	ug/l	-7.71
34) 1,4-Difluorobenzene	0.000	114	0	0.000	ug/l	-8.62
63) Chlorobenzene-d5	0.000	117	0	0.000	ug/l	-11.42
72) 1,4-Dichlorobenzene-d4	0.000	152	0	0.000	ug/l	-13.35
System Monitoring Compounds						
33) 1,2-Dichloroethane-d4	0.000	65	0	0.000	ug/l	
Spiked Amount	50.000	Range 50 - 163	Recovery	=	0.000%#	
35) Dibromofluoromethane	0.000	113	0	0.000	ug/l	
Spiked Amount	50.000	Range 54 - 147	Recovery	=	0.000%#	
50) Toluene-d8	0.000	98	0	0.000	ug/l	
Spiked Amount	50.000	Range 58 - 134	Recovery	=	0.000%#	
62) 4-Bromofluorobenzene	12.383	95	18	0.000	ug/l	-0.02
Spiked Amount	50.000	Range 30 - 143	Recovery	=	0.000%#	

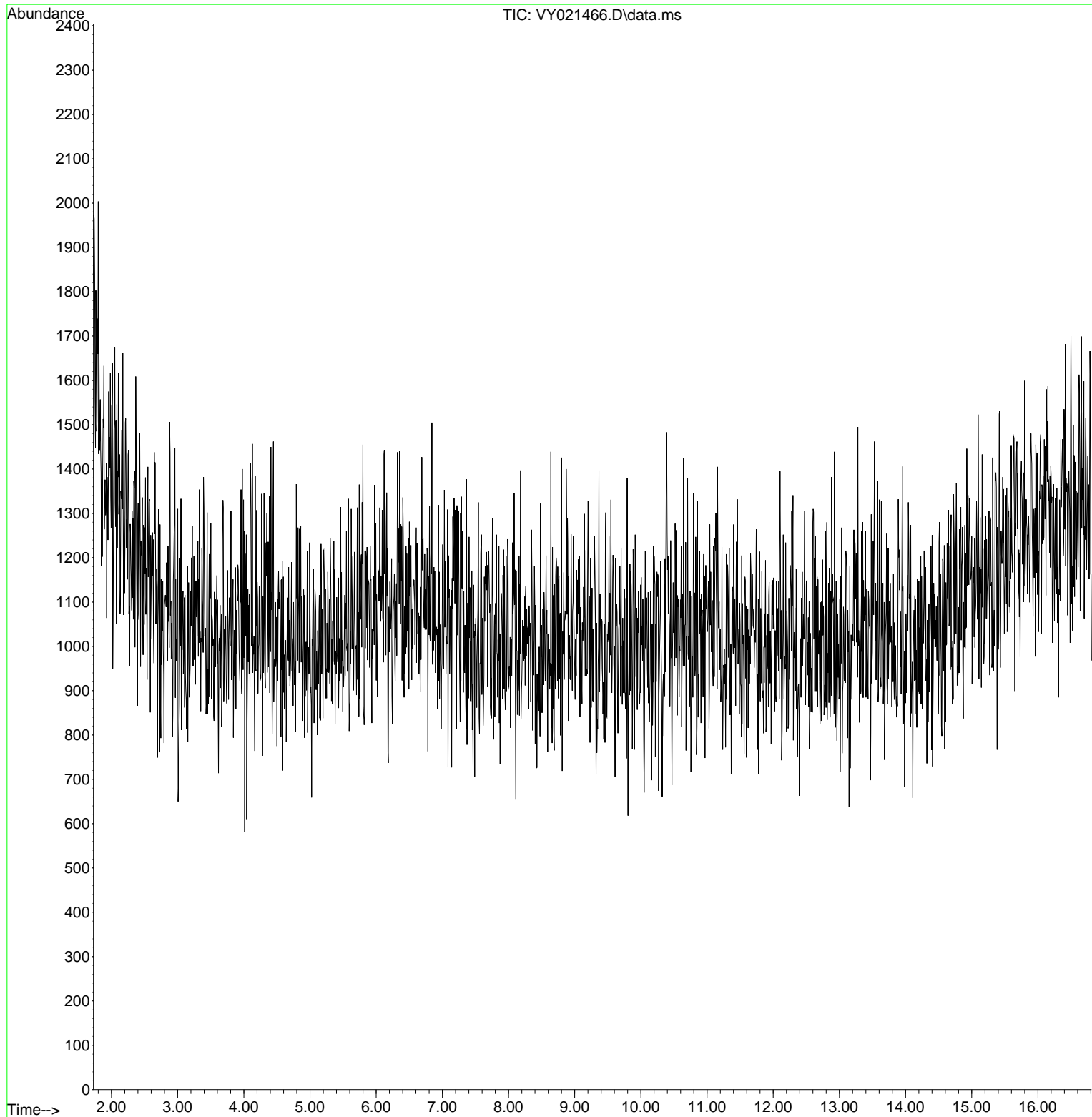
Target Compounds Qvalue

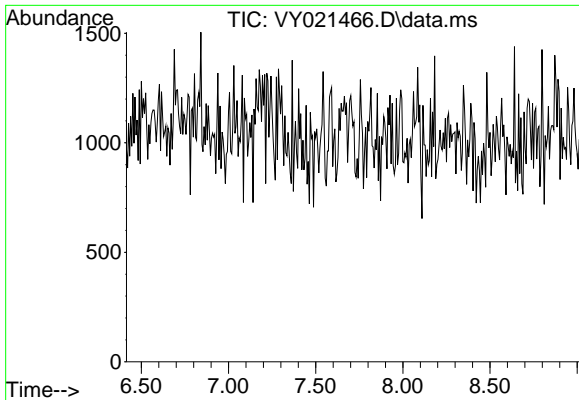
(#) = qualifier out of range (m) = manual integration (+) = signals summed

Data Path : Z:\voasrv\HPCHEM1\MSVOA\_Y\Data\VY030725\  
Data File : VY021466.D  
Acq On : 07 Mar 2025 17:12  
Operator : SY/MD  
Sample : Q1507-01  
Misc : 5.06g/5.0mL/MSVOA\_Y/SOIL/A  
ALS Vial : 17 Sample Multiplier: 1

Instrument :  
MSVOA\_Y  
ClientSampleId :  
50-MIDDLESEX-AVE

Quant Time: Mar 07 22:03:08 2025  
Quant Method : Z:\voasrv\HPCHEM1\MSVOA\_Y\methods\82Y030425S.M  
Quant Title : SW846 8260  
QLast Update : Wed Mar 05 12:42:45 2025  
Response via : Initial Calibration

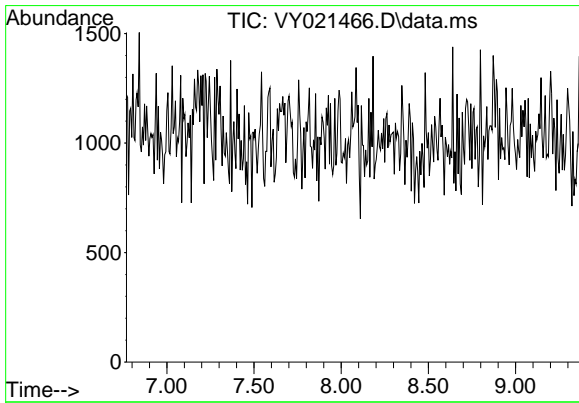
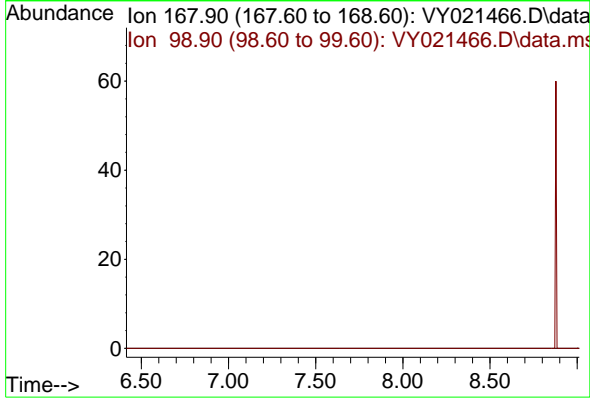




#1  
 Pentafluorobenzene  
 Concen: 0.000 ug/l  
 Expected RT: 7.71 min  
 Lab File: VY021466.D  
 Acq: 07 Mar 2025 17:12

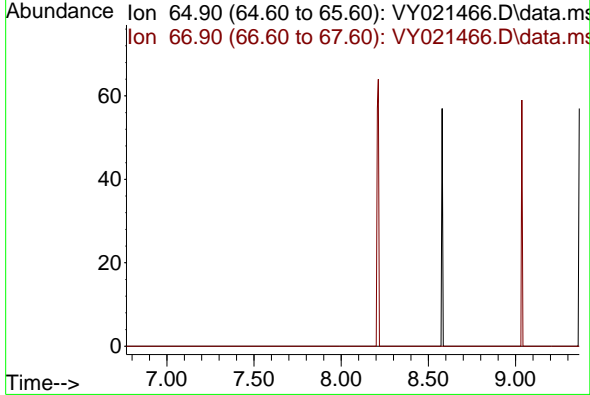
Instrument :  
 MSVOA\_Y  
 ClientSampleId :  
 50-MIDDLESEX-AVE

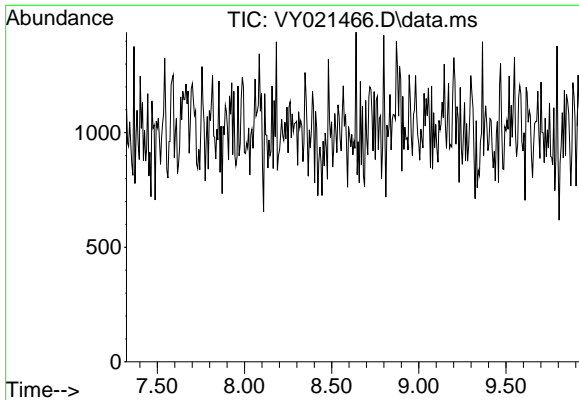
Tgt Ion: 168  
 Sig Exp Ratio  
 168 100  
 99 57.5



#33  
 1,2-Dichloroethane-d4  
 Concen: 0.000 ug/l  
 Expected RT: 8.07 min  
 Lab File: VY021466.D  
 Acq: 07 Mar 2025 17:12

Tgt Ion: 65  
 Sig Exp Ratio  
 65 100  
 67 51.4

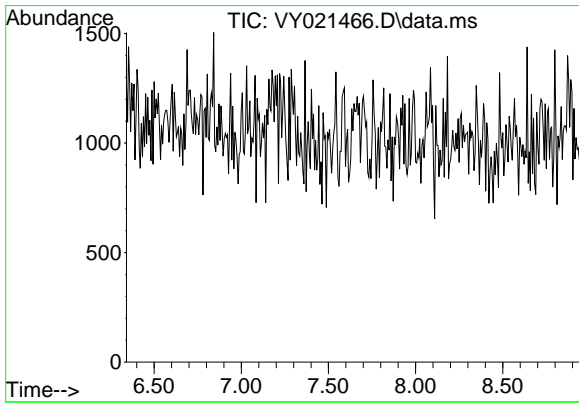
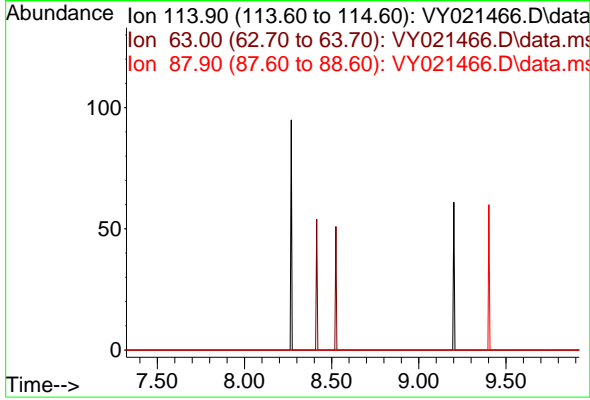




#34  
 1,4-Difluorobenzene  
 Concen: 0.000 ug/l  
 Expected RT: 8.62 min  
 Lab File: VY021466.D  
 Acq: 07 Mar 2025 17:12

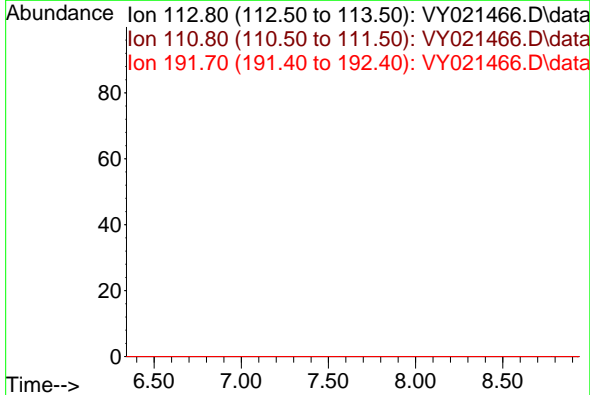
Instrument :  
 MSVOA\_Y  
 ClientSampleId :  
 50-MIDDLESEX-AVE

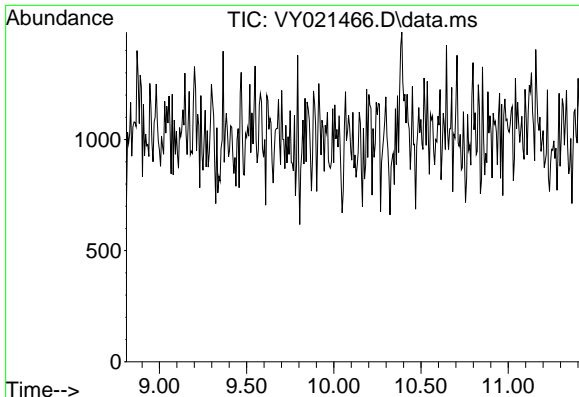
Tgt Ion: 114  
 Sig Exp Ratio  
 114 100  
 63 20.4  
 88 15.4



#35  
 Dibromofluoromethane  
 Concen: 0.000 ug/l  
 Expected RT: 7.64 min  
 Lab File: VY021466.D  
 Acq: 07 Mar 2025 17:12

Tgt Ion: 113  
 Sig Exp Ratio  
 113 100  
 111 102.5  
 192 19.9

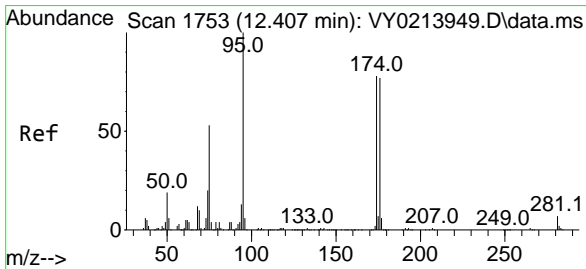
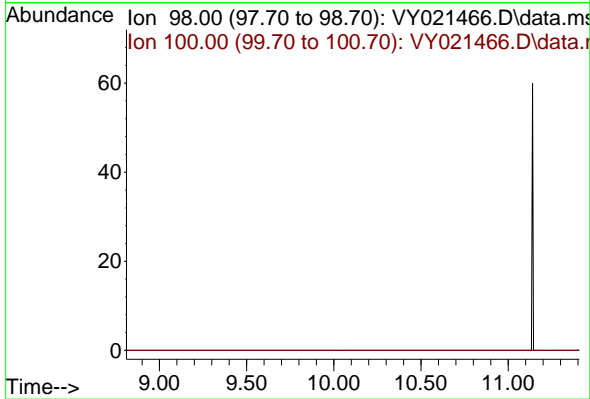




#50  
 Toluene-d8  
 Concen: 0.000 ug/l  
 Expected RT: 10.11 min  
 Lab File: VY021466.D  
 Acq: 07 Mar 2025 17:12

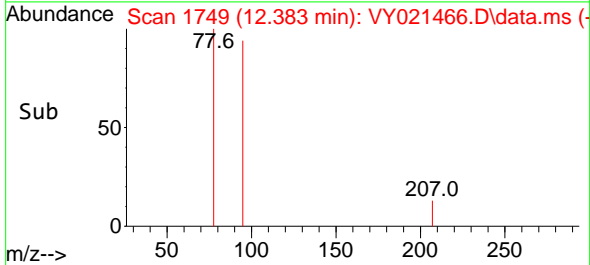
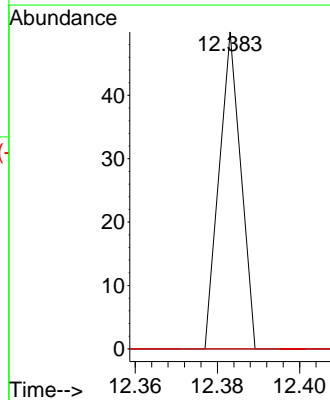
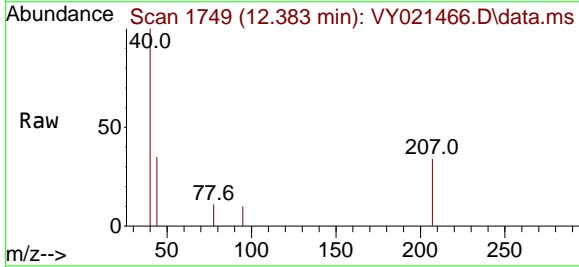
Instrument :  
 MSVOA\_Y  
 ClientSampleId :  
 50-MIDDLESEX-AVE

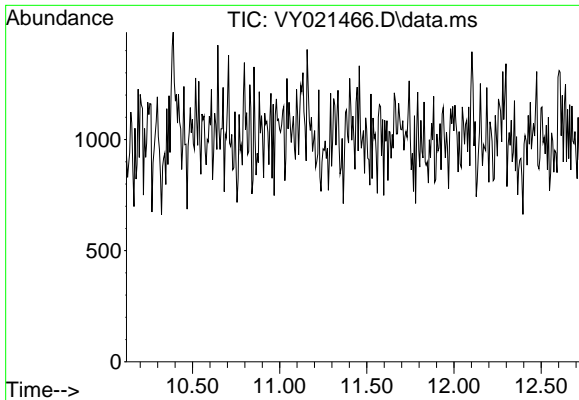
Tgt Ion: 98  
 Sig Exp Ratio  
 98 100  
 100 65.1



#62  
 4-Bromofluorobenzene  
 Concen: 0.000 ug/l  
 RT: 12.383 min Scan# 1749  
 Delta R.T. -0.024 min  
 Lab File: VY021466.D  
 Acq: 07 Mar 2025 17:12

Tgt Ion: 95 Resp: 18  
 Ion Ratio Lower Upper  
 95 100  
 174 0.0 0.0 165.0  
 176 0.0 0.0 160.0



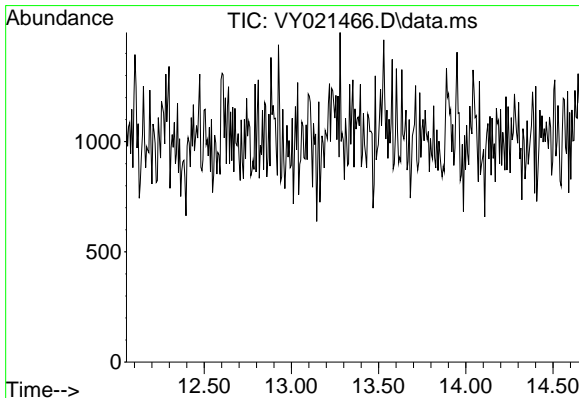
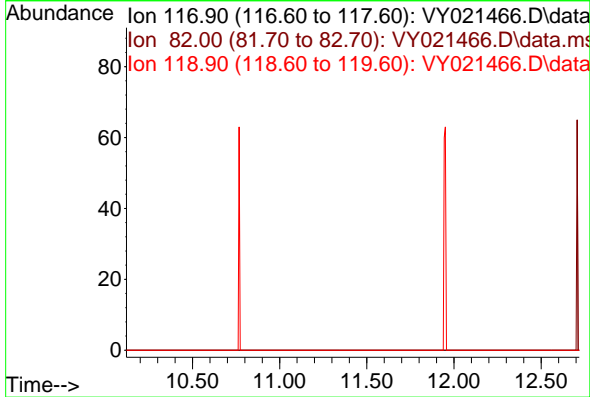


#63  
 Chlorobenzene-d5  
 Concen: 0.000 ug/l  
 Expected RT: 11.42 min  
 Lab File: VY021466.D  
 Acq: 07 Mar 2025 17:12

Instrument :  
 MSVOA\_Y  
 ClientSampleId :  
 50-MIDDLESEX-AVE

Tgt Ion: 117  

Sig	Exp Ratio
117	100
82	55.8
119	31.7



#72  
 1,4-Dichlorobenzene-d4  
 Concen: 0.000 ug/l  
 Expected RT: 13.35 min  
 Lab File: VY021466.D  
 Acq: 07 Mar 2025 17:12

Tgt Ion: 152  

Sig	Exp Ratio
152	100
115	58.0
150	173.6

