

Data Path : Z:\voasrv\HPCHEM1\MSVOA\_Y\Data\VY031022\  
 Data File : VY007837.D  
 Acq On : 10 Mar 2022 19:53  
 Operator : SY/MD  
 Sample : N1863-01  
 Misc : 5.00g/5.0mL/MSVOA\_Y/SOIL  
 ALS Vial : 20 Sample Multiplier: 1

Instrument :  
 MSVOA\_Y  
 ClientSampleId :  
 CHRT-25720

Quant Time: Mar 10 23:59:55 2022  
 Quant Method : Z:\voasrv\HPCHEM1\MSVOA\_Y\methods\82Y022822S.M  
 Quant Title : SW846 8260  
 QLast Update : Tue Mar 01 09:08:03 2022  
 Response via : Initial Calibration

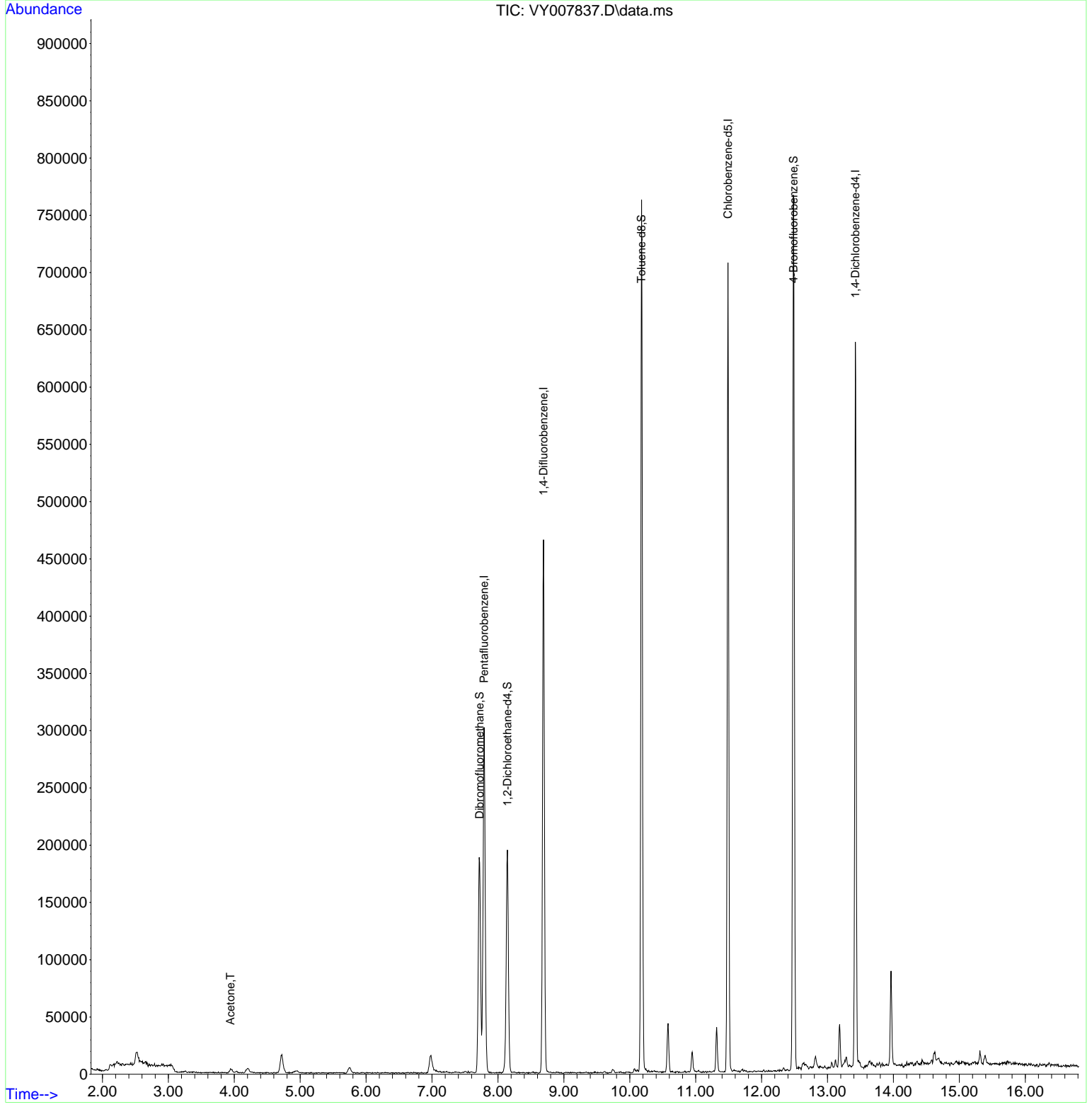
Compound	R.T.	QIon	Response	Conc	Units	Dev(Min)
-----						
Internal Standards						
1) Pentafluorobenzene	7.789	168	220858	50.000	ug/l	0.00
34) 1,4-Difluorobenzene	8.691	114	387260	50.000	ug/l	0.00
63) Chlorobenzene-d5	11.490	117	355830	50.000	ug/l	0.00
72) 1,4-Dichlorobenzene-d4	13.422	152	150694	50.000	ug/l	0.00
System Monitoring Compounds						
33) 1,2-Dichloroethane-d4	8.143	65	143474	62.051	ug/l	0.00
Spiked Amount	50.000	Range	50 - 163	Recovery	=	124.100%
35) Dibromofluoromethane	7.722	113	130571	52.737	ug/l	0.00
Spiked Amount	50.000	Range	54 - 147	Recovery	=	105.480%
50) Toluene-d8	10.179	98	477841	52.430	ug/l	0.00
Spiked Amount	50.000	Range	49 - 140	Recovery	=	104.860%
62) 4-Bromofluorobenzene	12.483	95	143274	48.769	ug/l	0.00
Spiked Amount	50.000	Range	25 - 144	Recovery	=	97.540%
Target Compounds						
16) Acetone	3.942	43	5971	12.694	ug/l	98
-----						

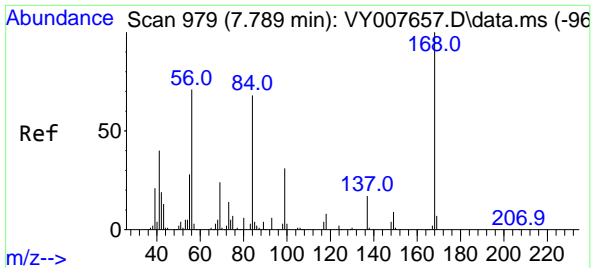
(#) = qualifier out of range (m) = manual integration (+) = signals summed

Data Path : Z:\voasrv\HPCHEM1\MSVOA\_Y\Data\VY031022\  
Data File : VY007837.D  
Acq On : 10 Mar 2022 19:53  
Operator : SY/MD  
Sample : N1863-01  
Misc : 5.00g/5.0mL/MSVOA\_Y/SOIL  
ALS Vial : 20 Sample Multiplier: 1

Instrument :  
MSVOA\_Y  
ClientSampleId :  
CHRT-25720

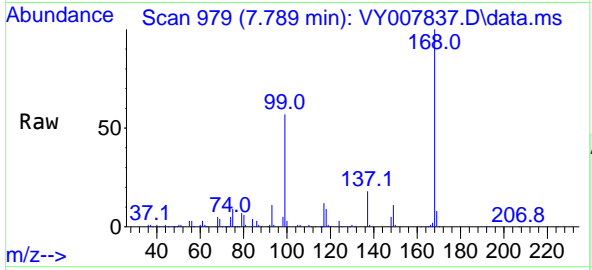
Quant Time: Mar 10 23:59:55 2022  
Quant Method : Z:\voasrv\HPCHEM1\MSVOA\_Y\methods\82Y022822S.M  
Quant Title : SW846 8260  
QLast Update : Tue Mar 01 09:08:03 2022  
Response via : Initial Calibration



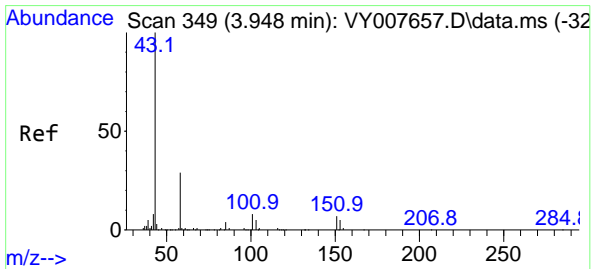
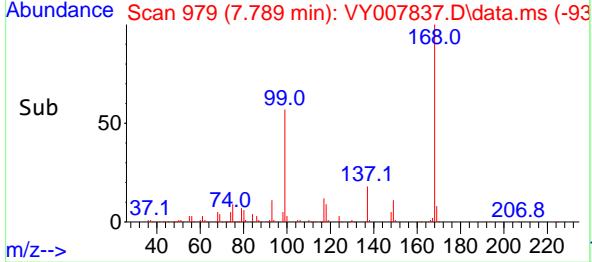
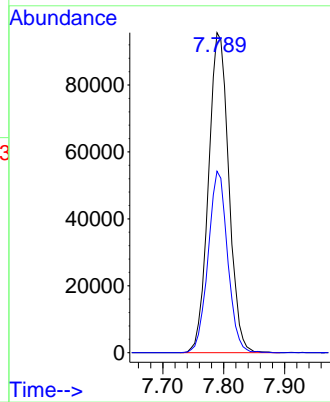


#1  
 Pentafluorobenzene  
 Concen: 50.000 ug/l  
 RT: 7.789 min Scan# 91  
 Delta R.T. -0.000 min  
 Lab File: VY007837.D  
 Acq: 10 Mar 2022 19:53

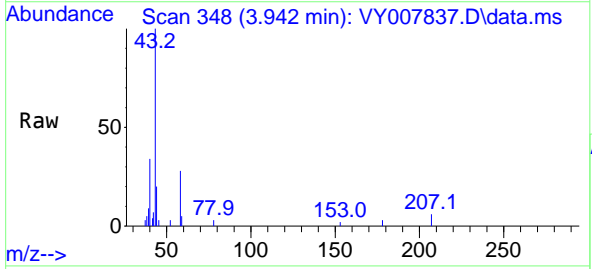
Instrument : MSVOA\_Y  
 ClientSampleId : CHRT-25720



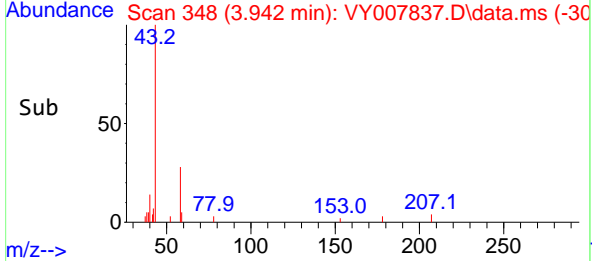
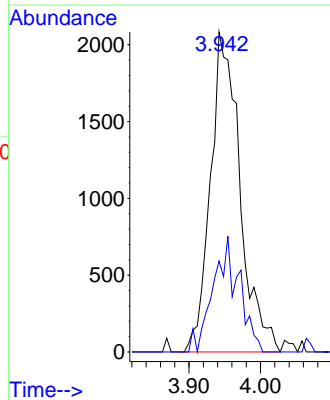
Tgt Ion:168 Resp: 220858  
 Ion Ratio Lower Upper  
 168 100  
 99 56.7 46.9 70.3

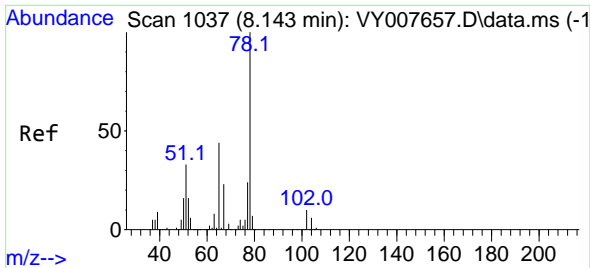


#16  
 Acetone  
 Concen: 12.694 ug/l  
 RT: 3.942 min Scan# 348  
 Delta R.T. -0.006 min  
 Lab File: VY007837.D  
 Acq: 10 Mar 2022 19:53



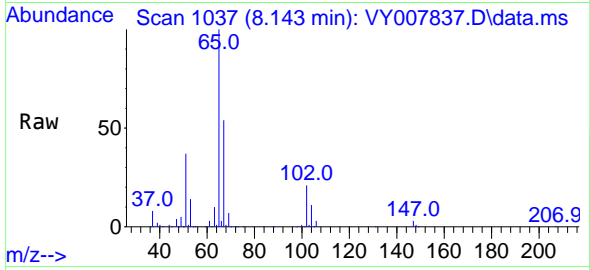
Tgt Ion: 43 Resp: 5971  
 Ion Ratio Lower Upper  
 43 100  
 58 28.4 22.0 33.0



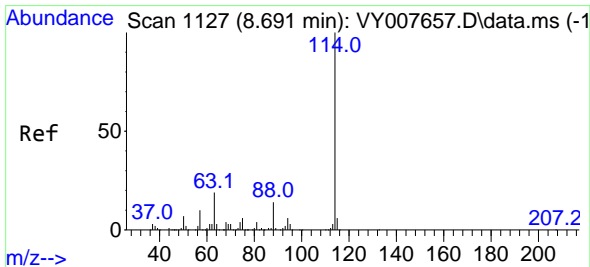
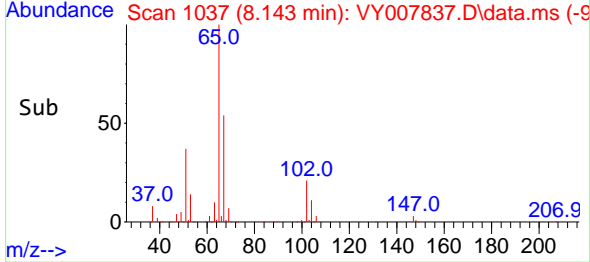
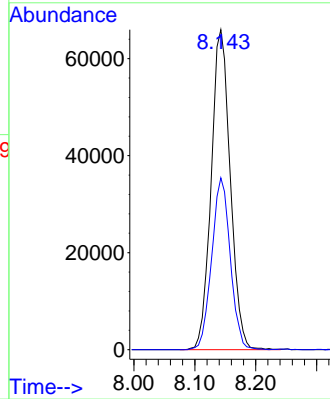


#33  
 1,2-Dichloroethane-d4  
 Concen: 62.051 ug/l  
 RT: 8.143 min Scan# 1037  
 Delta R.T. -0.000 min  
 Lab File: VY007837.D  
 Acq: 10 Mar 2022 19:53

Instrument : MSVOA\_Y  
 ClientSampleId : CHRT-25720

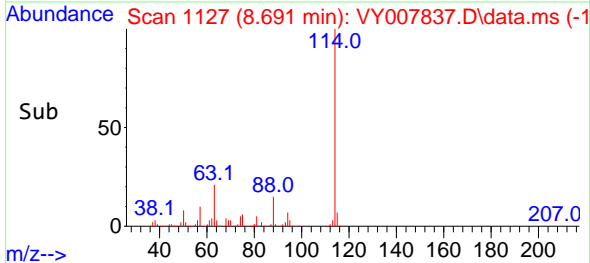
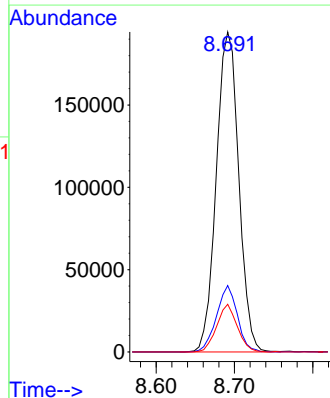
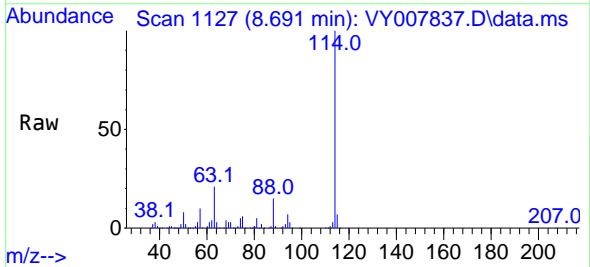


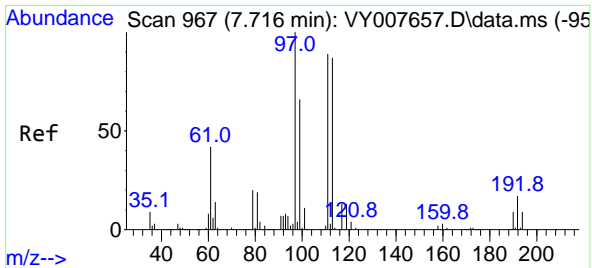
Tgt Ion: 65 Resp: 143474  
 Ion Ratio Lower Upper  
 65 100  
 67 52.2 0.0 99.4



#34  
 1,4-Difluorobenzene  
 Concen: 50.000 ug/l  
 RT: 8.691 min Scan# 1127  
 Delta R.T. 0.000 min  
 Lab File: VY007837.D  
 Acq: 10 Mar 2022 19:53

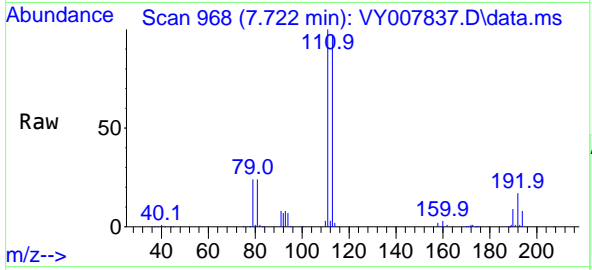
Tgt Ion: 114 Resp: 387260  
 Ion Ratio Lower Upper  
 114 100  
 63 20.7 0.0 43.2  
 88 14.9 0.0 31.8



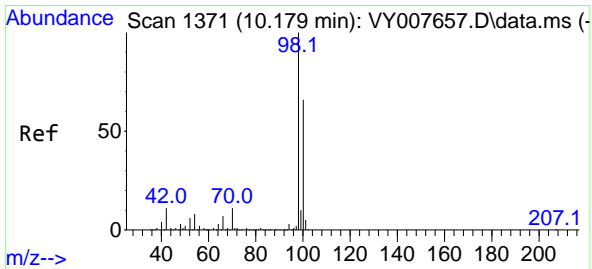
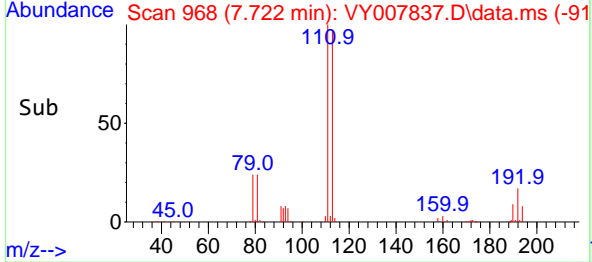
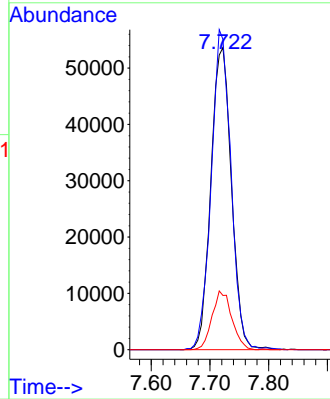


#35  
 Dibromofluoromethane  
 Concen: 52.737 ug/l  
 RT: 7.722 min Scan# 90  
 Delta R.T. 0.006 min  
 Lab File: VY007837.D  
 Acq: 10 Mar 2022 19:53

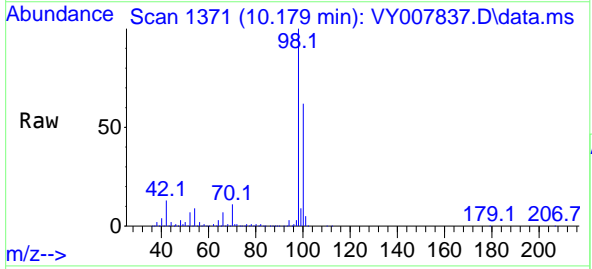
Instrument :  
 MSVOA\_Y  
 ClientSampleId :  
 CHRT-25720



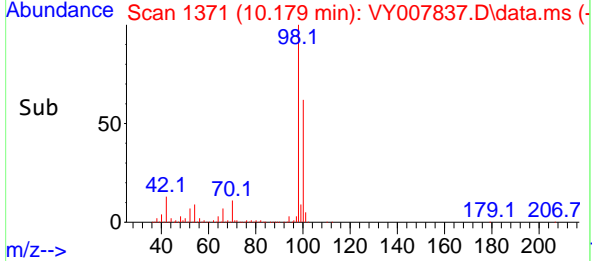
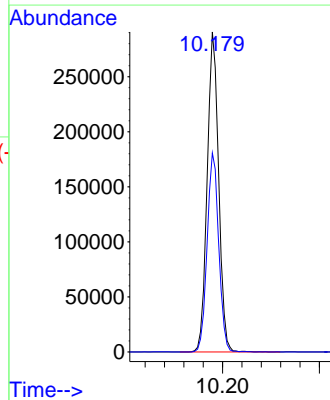
Tgt Ion:113 Resp: 130571  
 Ion Ratio Lower Upper  
 113 100  
 111 101.3 82.6 124.0  
 192 18.7 17.6 26.4

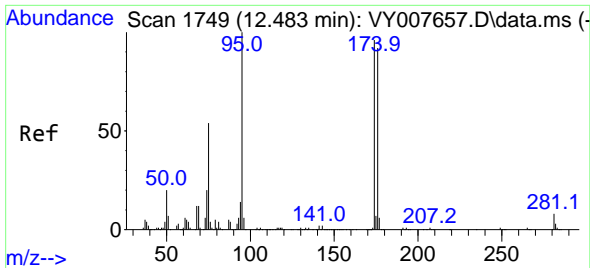


#50  
 Toluene-d8  
 Concen: 52.430 ug/l  
 RT: 10.179 min Scan# 1371  
 Delta R.T. -0.000 min  
 Lab File: VY007837.D  
 Acq: 10 Mar 2022 19:53



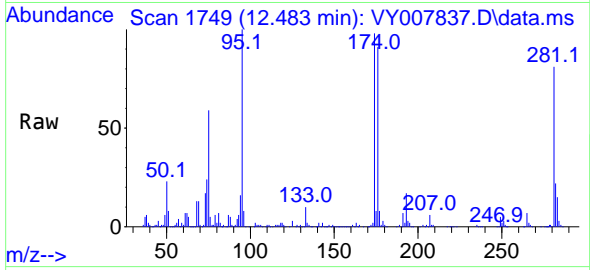
Tgt Ion: 98 Resp: 477841  
 Ion Ratio Lower Upper  
 98 100  
 100 62.9 50.2 75.2



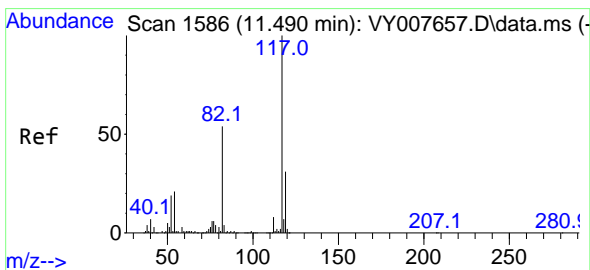
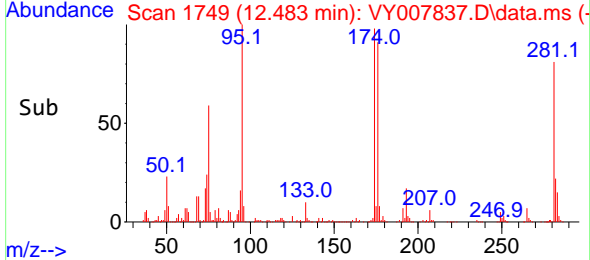
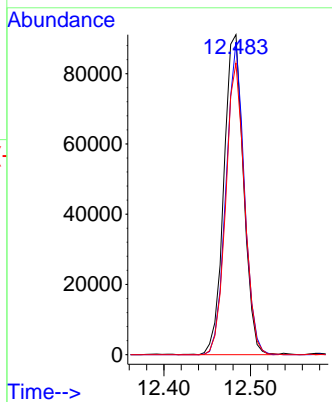


#62  
 4-Bromofluorobenzene  
 Concen: 48.769 ug/l  
 RT: 12.483 min Scan# 11  
 Delta R.T. 0.000 min  
 Lab File: VY007837.D  
 Acq: 10 Mar 2022 19:53

Instrument : MSVOA\_Y  
 ClientSampleId : CHRT-25720

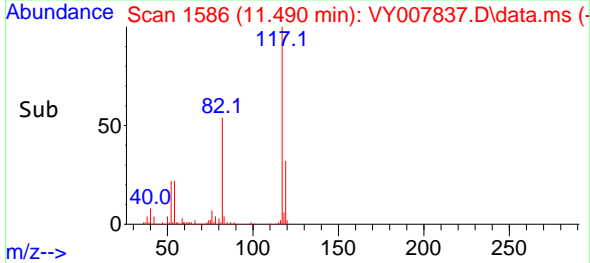
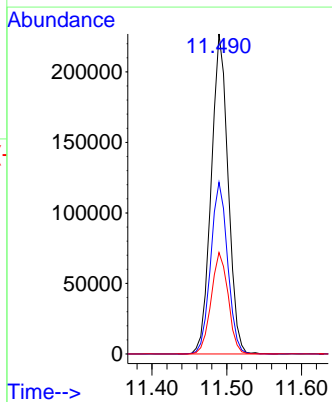
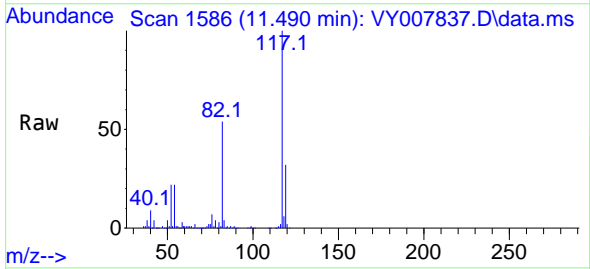


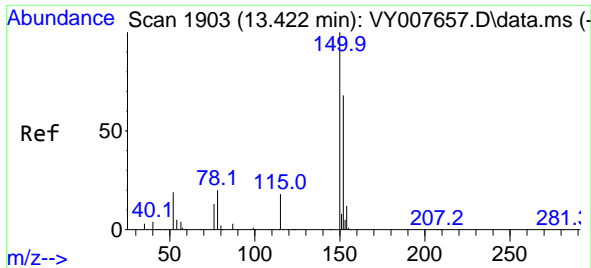
Tgt Ion: 95 Resp: 143274  
 Ion Ratio Lower Upper  
 95 100  
 174 90.8 0.0 177.0  
 176 87.0 0.0 175.8



#63  
 Chlorobenzene-d5  
 Concen: 50.000 ug/l  
 RT: 11.490 min Scan# 1586  
 Delta R.T. -0.000 min  
 Lab File: VY007837.D  
 Acq: 10 Mar 2022 19:53

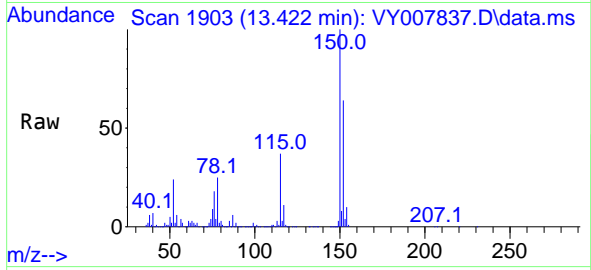
Tgt Ion: 117 Resp: 355830  
 Ion Ratio Lower Upper  
 117 100  
 82 53.6 43.0 64.4  
 119 31.6 25.4 38.0





#72  
 1,4-Dichlorobenzene-d4  
 Concen: 50.000 ug/l  
 RT: 13.422 min Scan# 1903  
 Delta R.T. 0.000 min  
 Lab File: VY007837.D  
 Acq: 10 Mar 2022 19:53

Instrument : MSVOA\_Y  
 ClientSampleId : CHRT-25720



Tgt Ion:152 Resp: 150694

Ion	Ratio	Lower	Upper
152	100		
115	57.0	28.2	84.7
150	159.7	0.0	347.6

