

Data Path : Z:\voasrv\HPCHEM1\MSVOA_Y\Data\VY031122\
 Data File : VY007851.D
 Acq On : 11 Mar 2022 13:53
 Operator : SY/MD
 Sample : N1847-05
 Misc : 8.88g/5.0mL/MSVOA_Y/SOIL
 ALS Vial : 13 Sample Multiplier: 1

Instrument :
 MSVOA_Y
 ClientSampleId :
 CG-B1-030722-0-1

Quant Time: Mar 11 23:21:44 2022
 Quant Method : Z:\voasrv\HPCHEM1\MSVOA_Y\methods\82Y022822S.M
 Quant Title : SW846 8260
 QLast Update : Tue Mar 01 09:08:03 2022
 Response via : Initial Calibration

Compound	R.T.	QIon	Response	Conc	Units	Dev(Min)

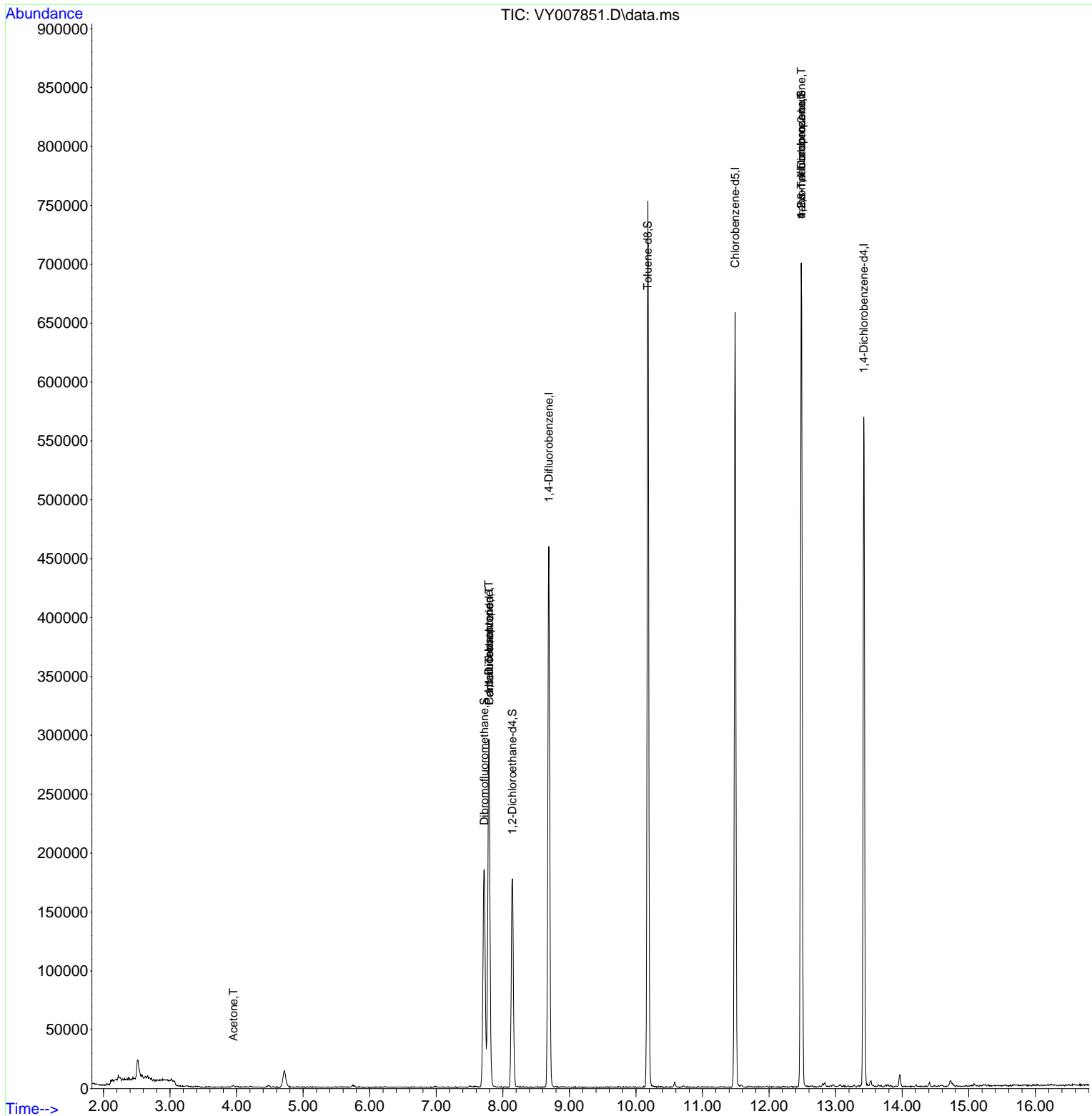
Internal Standards						
1) Pentafluorobenzene	7.795	168	220640	50.000	ug/l	0.00
34) 1,4-Difluorobenzene	8.691	114	377887	50.000	ug/l	0.00
63) Chlorobenzene-d5	11.489	117	335891	50.000	ug/l	0.00
72) 1,4-Dichlorobenzene-d4	13.422	152	139331	50.000	ug/l	0.00
System Monitoring Compounds						
33) 1,2-Dichloroethane-d4	8.142	65	132246	57.252	ug/l	0.00
Spiked Amount	50.000	Range 50 - 163	Recovery	=	114.500%	
35) Dibromofluoromethane	7.722	113	127891	52.936	ug/l	0.00
Spiked Amount	50.000	Range 54 - 147	Recovery	=	105.880%	
50) Toluene-d8	10.179	98	471037	52.966	ug/l	0.00
Spiked Amount	50.000	Range 49 - 140	Recovery	=	105.940%	
62) 4-Bromofluorobenzene	12.483	95	128410	44.794	ug/l	0.00
Spiked Amount	50.000	Range 25 - 144	Recovery	=	89.580%	
Target Compounds						
						Qvalue
2) Dichlorodifluoromethane	2.131	85	26	Below Cal	#	43
3) Chloromethane	2.107	50	1454	Below Cal	#	78
13) Acrolein	3.753	56	85	Below Cal	#	55
16) Acetone	3.954	43	2154	4.584	ug/l #	75
17) Carbon Disulfide	4.198	76	297	Below Cal	#	75
18) Methyl Acetate	4.484	43	2633	Below Cal	#	90
20) Methylene Chloride	4.710	84	9700	Below Cal	#	81
31) Cyclohexane	7.789	56	5616	Below Cal	#	25
36) 1,1-Dichloropropene	7.789	75	19119	5.031	ug/l #	52
38) Carbon Tetrachloride	7.795	117	23863	5.886	ug/l #	15
76) 1,2,3-Trichloropropane	12.483	75	78662	50.554	ug/l #	100
81) trans-1,4-Dichloro-2-b...	12.483	75	78662	103.351	ug/l #	8

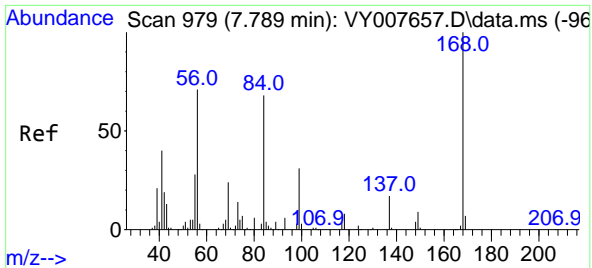
(#) = qualifier out of range (m) = manual integration (+) = signals summed

Data Path : Z:\voasrv\HPCHEM1\MSVOA_Y\Data\VY031122\
 Data File : VY007851.D
 Acq On : 11 Mar 2022 13:53
 Operator : SY/MD
 Sample : N1847-05
 Misc : 8.88g/5.0mL/MSVOA_Y/SOIL
 ALS Vial : 13 Sample Multiplier: 1

Instrument :
 MSVOA_Y
 ClientSampleId :
 CG-B1-030722-0-1

Quant Time: Mar 11 23:21:44 2022
 Quant Method : Z:\voasrv\HPCHEM1\MSVOA_Y\methods\82Y022822S.M
 Quant Title : SW846 8260
 QLast Update : Tue Mar 01 09:08:03 2022
 Response via : Initial Calibration

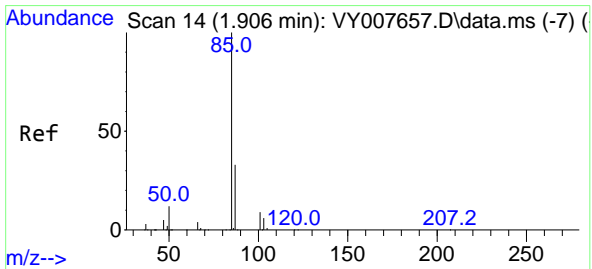
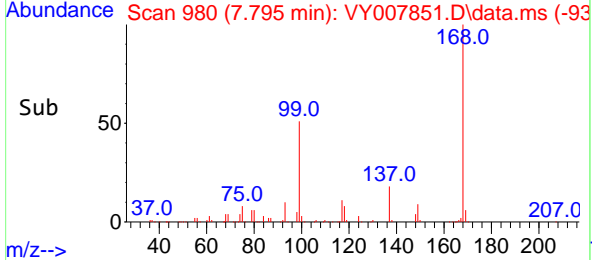
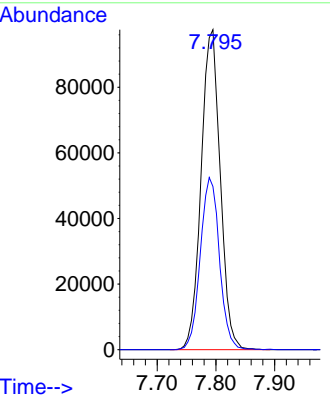
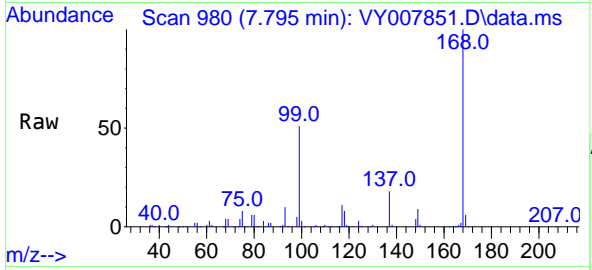




#1
 Pentafluorobenzene
 Concen: 50.000 ug/l
 RT: 7.795 min Scan# 91
 Delta R.T. 0.006 min
 Lab File: VY007851.D
 Acq: 11 Mar 2022 13:53

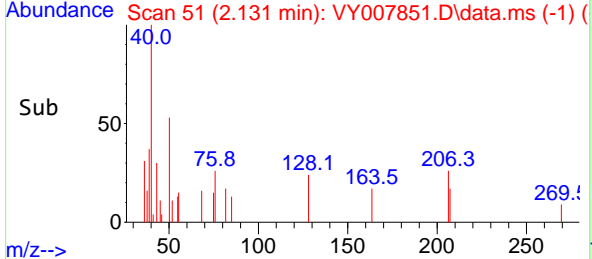
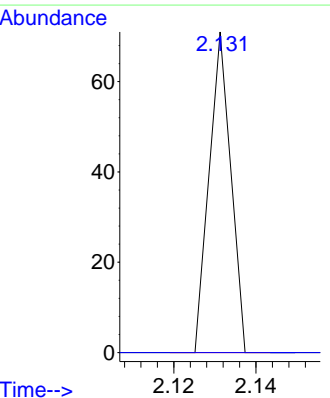
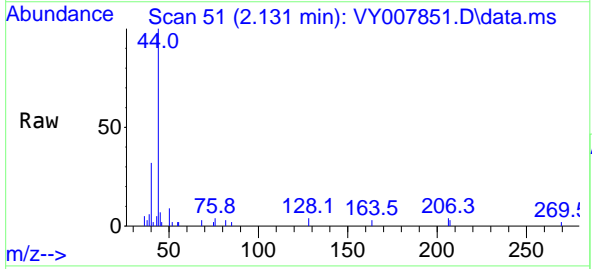
Instrument : MSVOA_Y
 ClientSampleId : CG-B1-030722-0-1

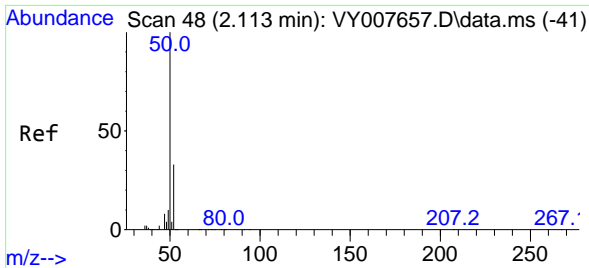
Tgt Ion:168 Resp: 220640
 Ion Ratio Lower Upper
 168 100
 99 51.0 46.9 70.3



#2
 Dichlorodifluoromethane
 Concen: Below Cal
 RT: 2.131 min Scan# 51
 Delta R.T. 0.225 min
 Lab File: VY007851.D
 Acq: 11 Mar 2022 13:53

Tgt Ion: 85 Resp: 26
 Ion Ratio Lower Upper
 85 100
 87 0.0 16.1 48.2#

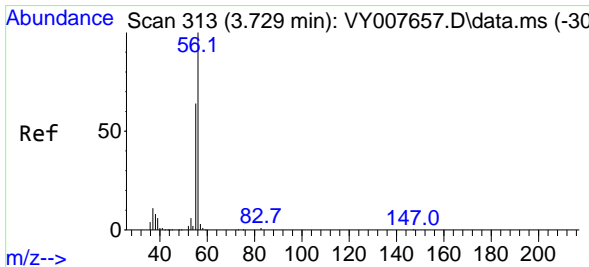
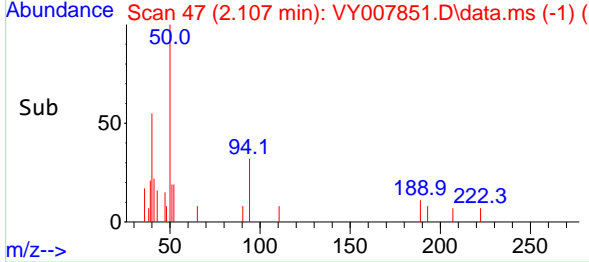
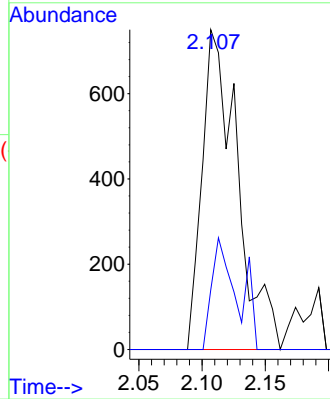
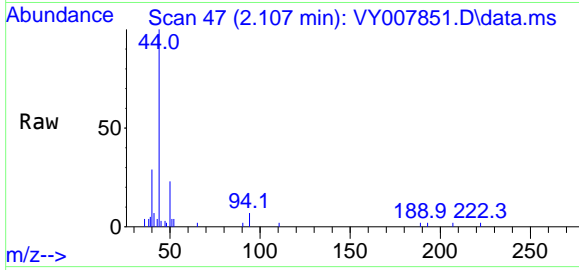




#3
 Chloromethane
 Concen: Below Cal
 RT: 2.107 min Scan# 41
 Delta R.T. -0.006 min
 Lab File: VY007851.D
 Acq: 11 Mar 2022 13:53

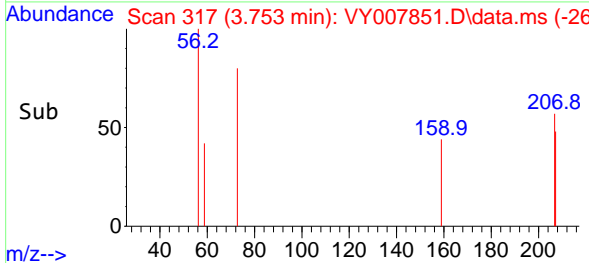
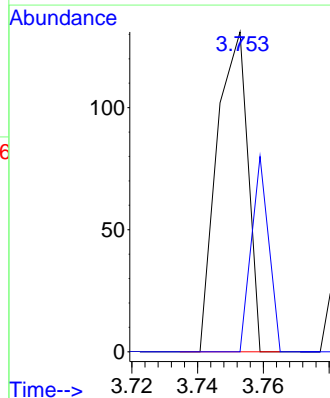
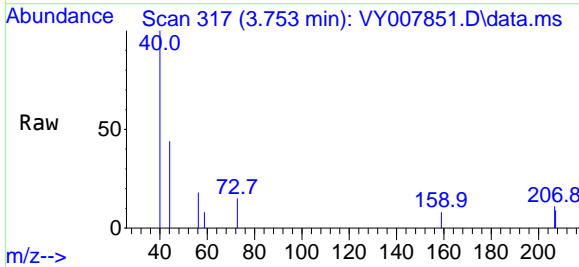
Instrument : MSVOA_Y
 ClientSampleId : CG-B1-030722-0-1

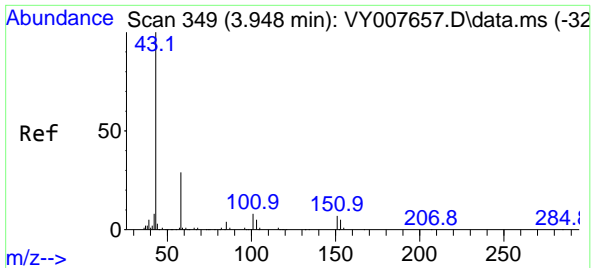
Tgt Ion: 50 Resp: 1454
 Ion Ratio Lower Upper
 50 100
 52 18.7 24.6 37.0#



#13
 Acrolein
 Concen: Below Cal
 RT: 3.753 min Scan# 317
 Delta R.T. 0.024 min
 Lab File: VY007851.D
 Acq: 11 Mar 2022 13:53

Tgt Ion: 56 Resp: 85
 Ion Ratio Lower Upper
 56 100
 55 34.1 57.6 86.4#

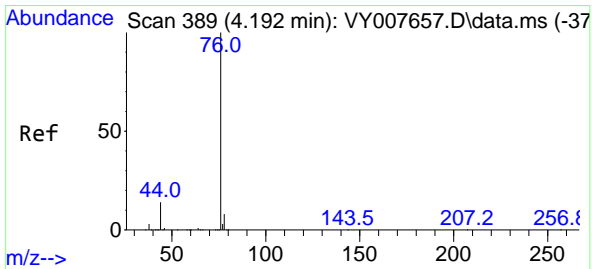
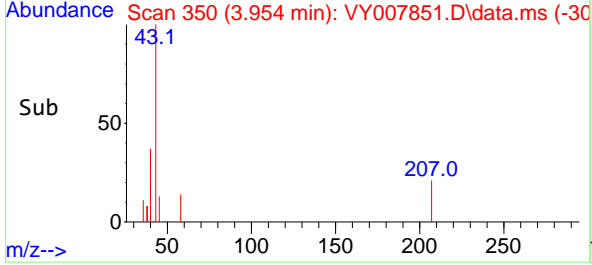
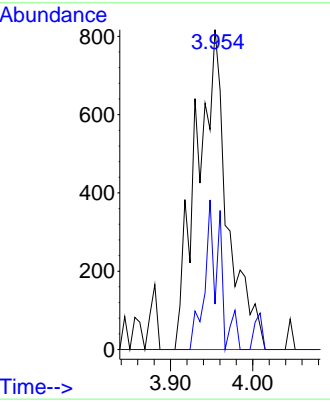
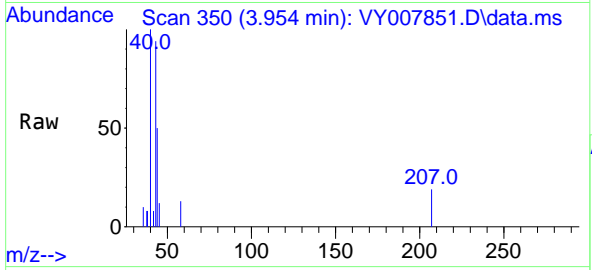




#16
 Acetone
 Concen: 4.584 ug/l
 RT: 3.954 min Scan# 31
 Delta R.T. 0.006 min
 Lab File: VY007851.D
 Acq: 11 Mar 2022 13:53

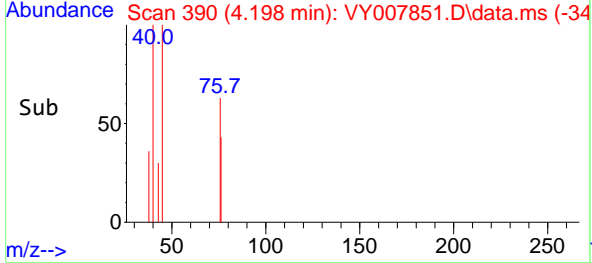
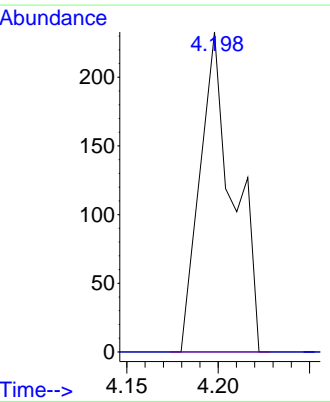
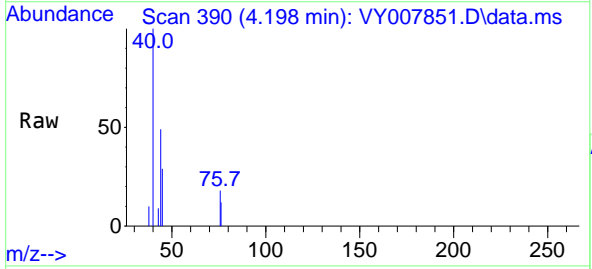
Instrument : MSVOA_Y
 ClientSampleId : CG-B1-030722-0-1

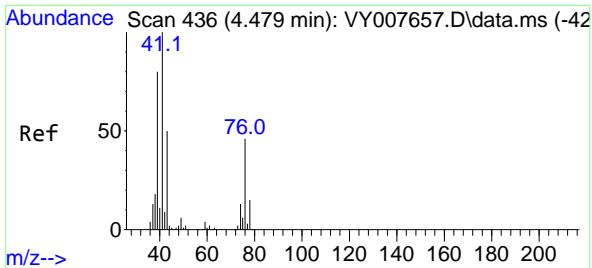
Tgt Ion: 43 Resp: 2154
 Ion Ratio Lower Upper
 43 100
 58 14.2 22.0 33.0#



#17
 Carbon Disulfide
 Concen: Below Cal
 RT: 4.198 min Scan# 390
 Delta R.T. 0.006 min
 Lab File: VY007851.D
 Acq: 11 Mar 2022 13:53

Tgt Ion: 76 Resp: 297
 Ion Ratio Lower Upper
 76 100
 78 0.0 7.4 11.0#

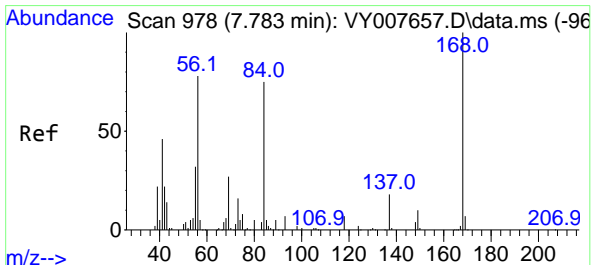
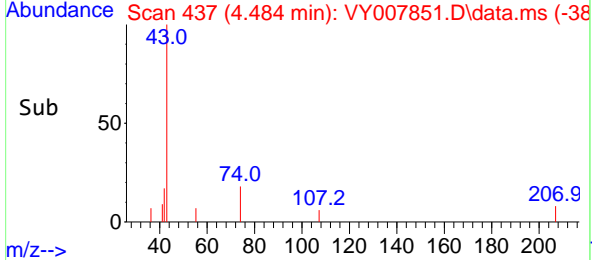
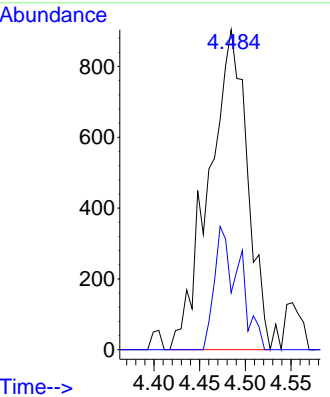
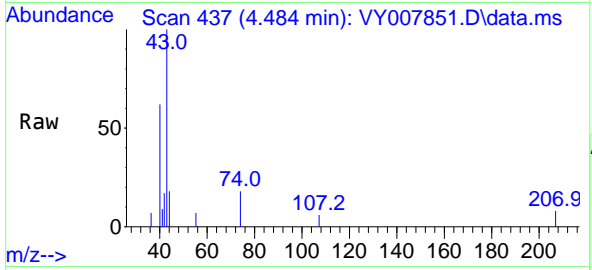




#18
 Methyl Acetate
 Concen: Below Cal
 RT: 4.484 min Scan# 41
 Delta R.T. 0.005 min
 Lab File: VY007851.D
 Acq: 11 Mar 2022 13:53

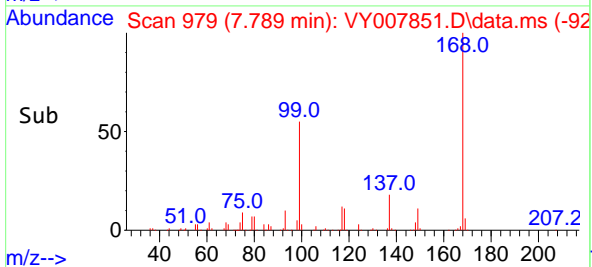
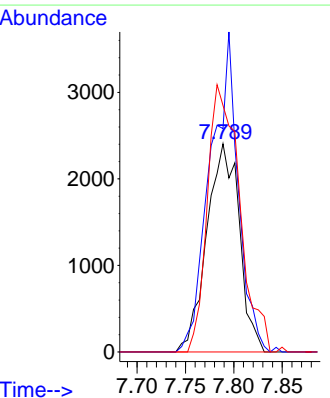
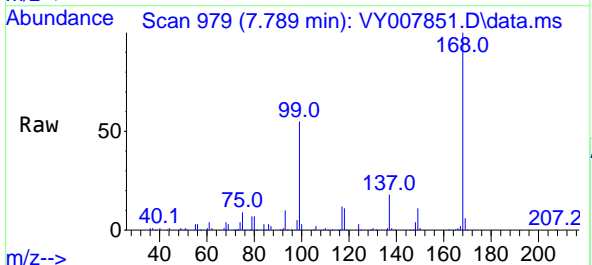
Instrument : MSVOA_Y
 ClientSampleId : CG-B1-030722-0-1

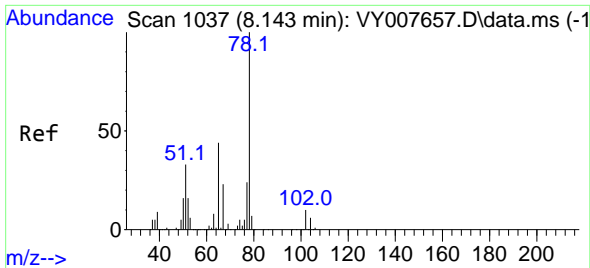
Tgt Ion: 43 Resp: 2633
 Ion Ratio Lower Upper
 43 100
 74 25.2 16.6 24.8#



#31
 Cyclohexane
 Concen: Below Cal
 RT: 7.789 min Scan# 979
 Delta R.T. 0.006 min
 Lab File: VY007851.D
 Acq: 11 Mar 2022 13:53

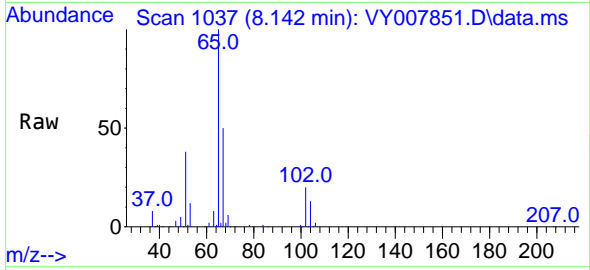
Tgt Ion: 56 Resp: 5616
 Ion Ratio Lower Upper
 56 100
 69 107.3 26.7 40.1#
 84 132.0 67.2 100.8#



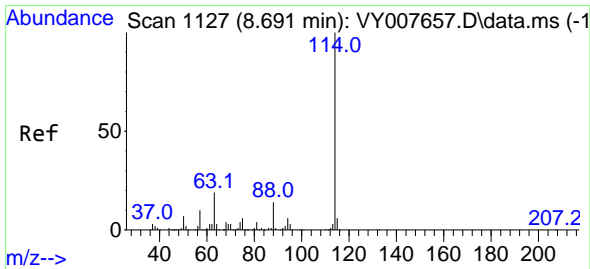
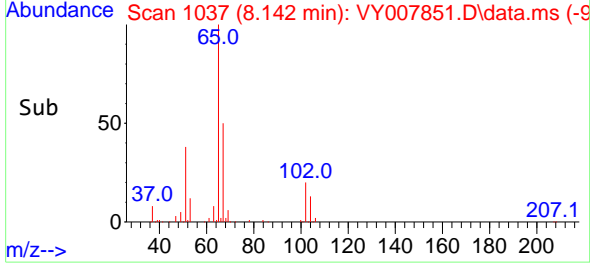
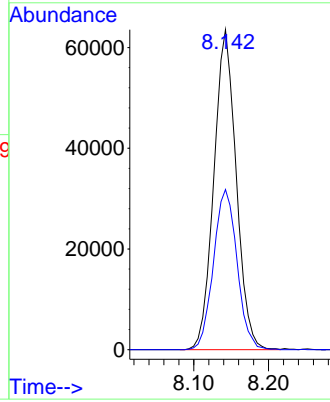


#33
 1,2-Dichloroethane-d4
 Concen: 57.252 ug/l
 RT: 8.142 min Scan# 1037
 Delta R.T. -0.001 min
 Lab File: VY007851.D
 Acq: 11 Mar 2022 13:53

Instrument : MSVOA_Y
 ClientSampleId : CG-B1-030722-0-1

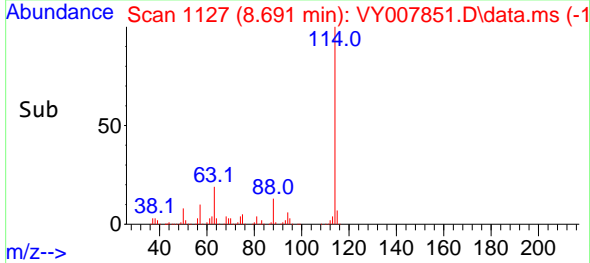
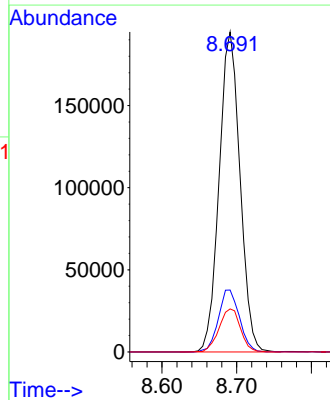
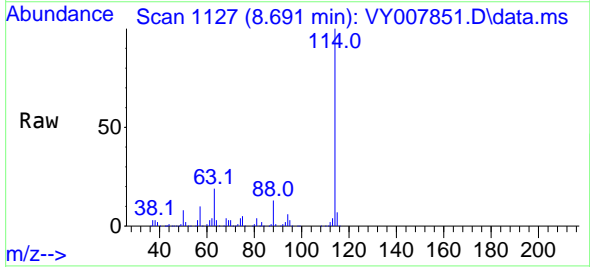


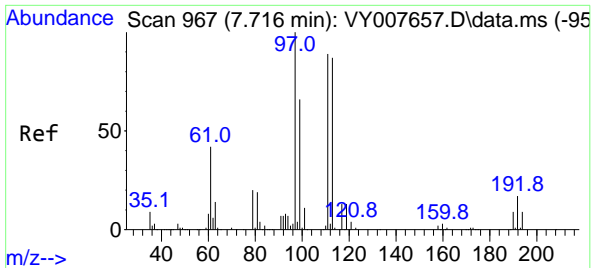
Tgt Ion: 65 Resp: 132246
 Ion Ratio Lower Upper
 65 100
 67 52.8 0.0 99.4



#34
 1,4-Difluorobenzene
 Concen: 50.000 ug/l
 RT: 8.691 min Scan# 1127
 Delta R.T. 0.000 min
 Lab File: VY007851.D
 Acq: 11 Mar 2022 13:53

Tgt Ion: 114 Resp: 377887
 Ion Ratio Lower Upper
 114 100
 63 19.3 0.0 43.2
 88 13.4 0.0 31.8



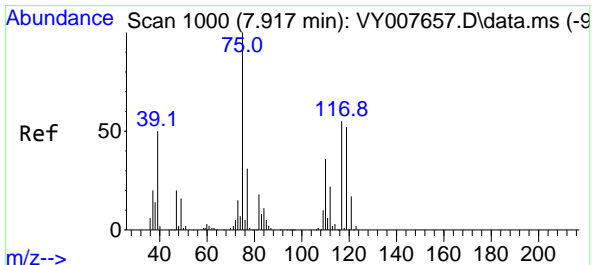
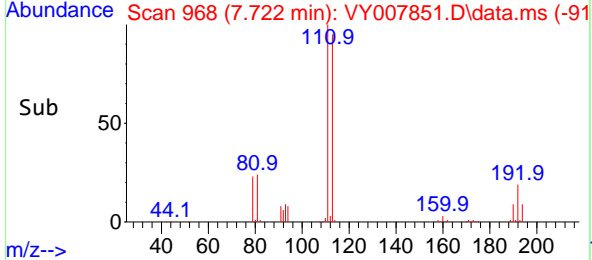
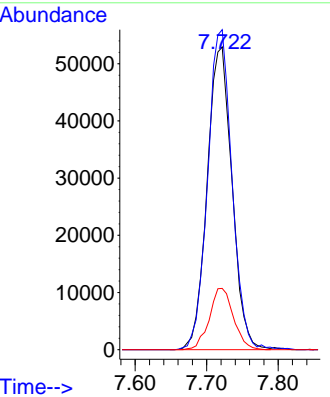
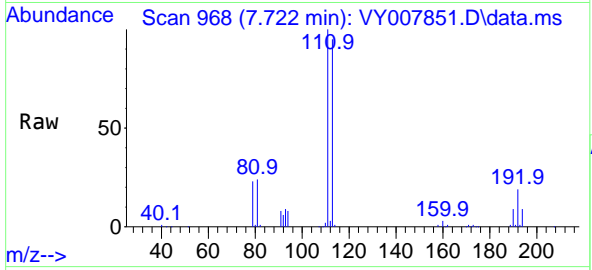


#35
 Dibromofluoromethane
 Concen: 52.936 ug/l
 RT: 7.722 min Scan# 90
 Delta R.T. 0.006 min
 Lab File: VY007851.D
 Acq: 11 Mar 2022 13:53

Instrument : MSVOA_Y
 ClientSampleId : CG-B1-030722-0-1

Tgt Ion:113 Resp: 127891

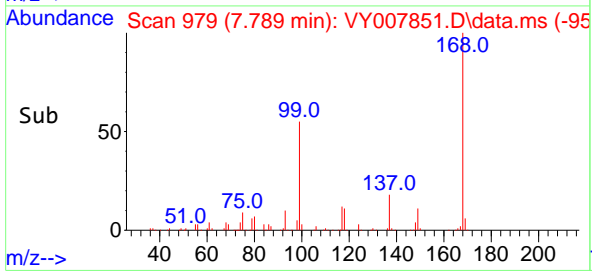
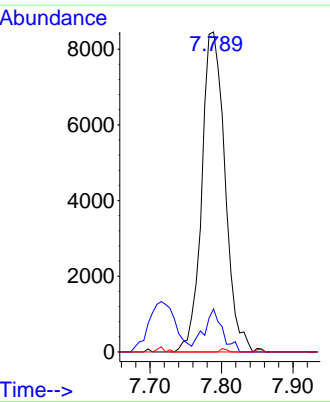
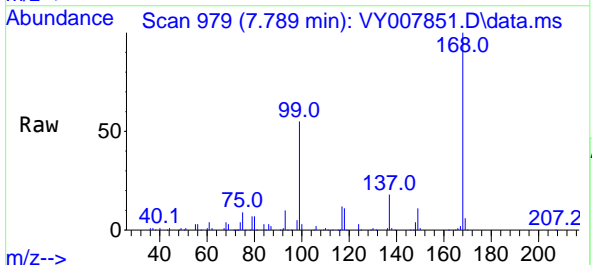
Ion	Ratio	Lower	Upper
113	100		
111	103.7	82.6	124.0
192	19.7	17.6	26.4

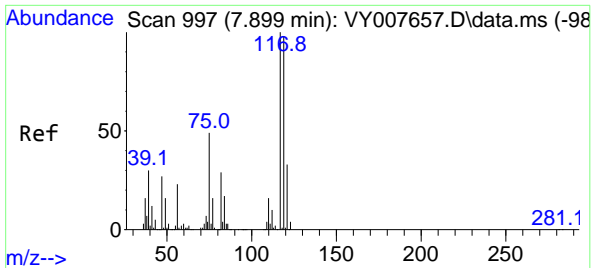


#36
 1,1-Dichloropropene
 Concen: 5.031 ug/l
 RT: 7.789 min Scan# 979
 Delta R.T. -0.128 min
 Lab File: VY007851.D
 Acq: 11 Mar 2022 13:53

Tgt Ion: 75 Resp: 19119

Ion	Ratio	Lower	Upper
75	100		
110	10.6	17.1	51.2#
77	0.3	24.4	36.6#



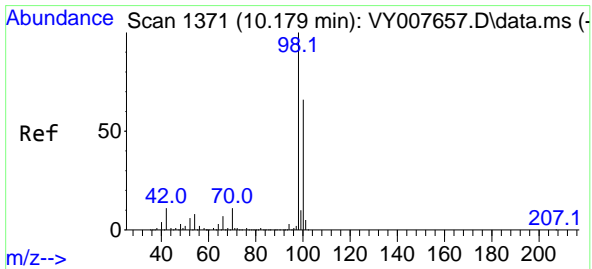
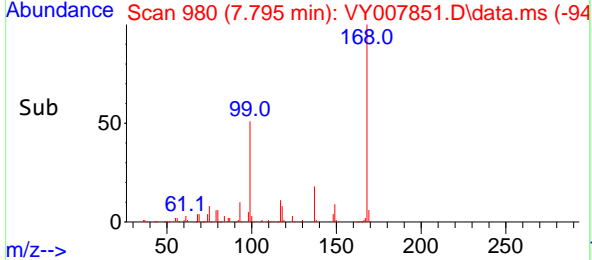
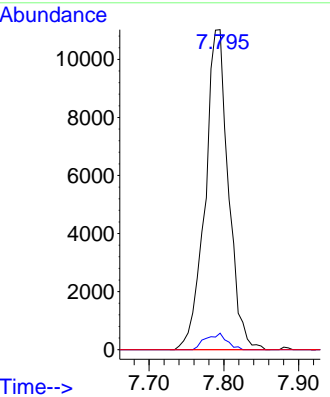
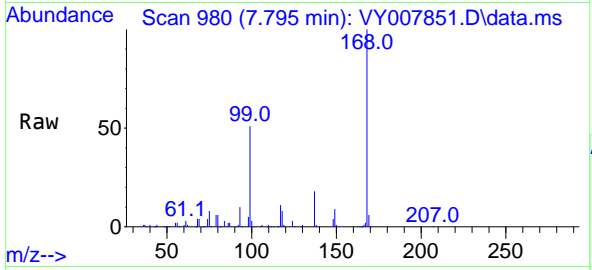


#38
 Carbon Tetrachloride
 Concen: 5.886 ug/l
 RT: 7.795 min Scan# 91
 Delta R.T. -0.104 min
 Lab File: VY007851.D
 Acq: 11 Mar 2022 13:53

Instrument : MSVOA_Y
 ClientSampleId : CG-B1-030722-0-1

Tgt Ion:117 Resp: 23863

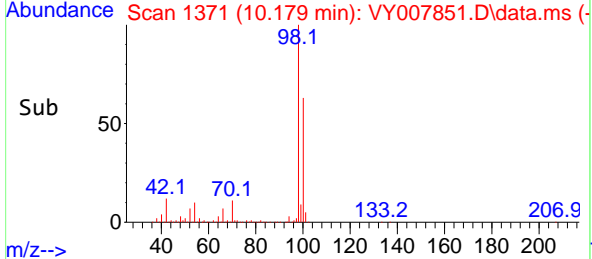
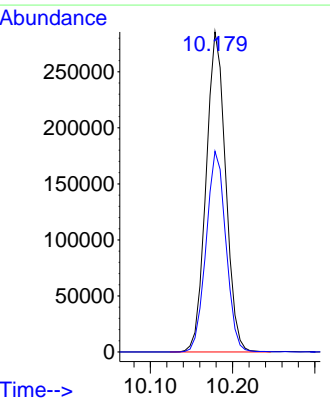
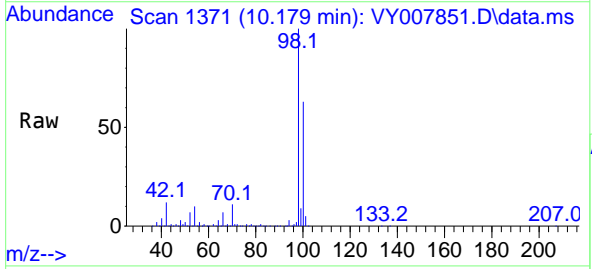
Ion	Ratio	Lower	Upper
117	100		
119	5.1	77.9	116.9#
121	0.0	24.8	37.2#

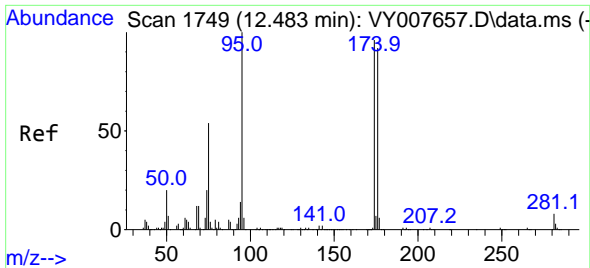


#50
 Toluene-d8
 Concen: 52.966 ug/l
 RT: 10.179 min Scan# 1371
 Delta R.T. -0.000 min
 Lab File: VY007851.D
 Acq: 11 Mar 2022 13:53

Tgt Ion: 98 Resp: 471037

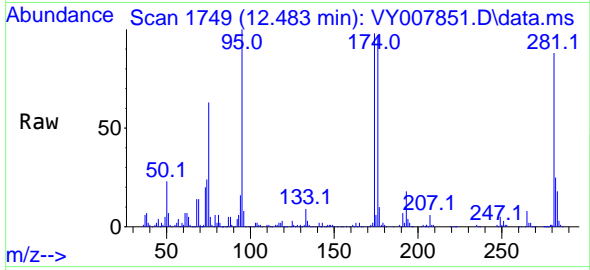
Ion	Ratio	Lower	Upper
98	100		
100	63.4	50.2	75.2



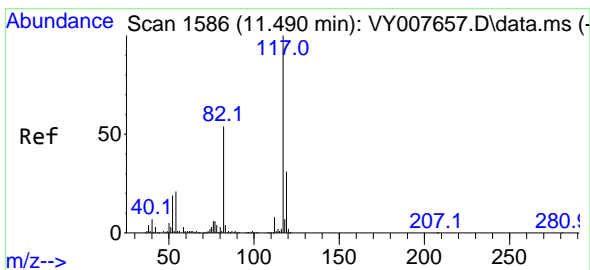
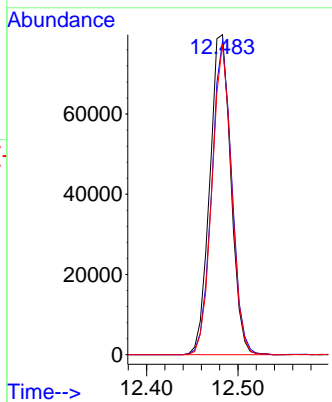
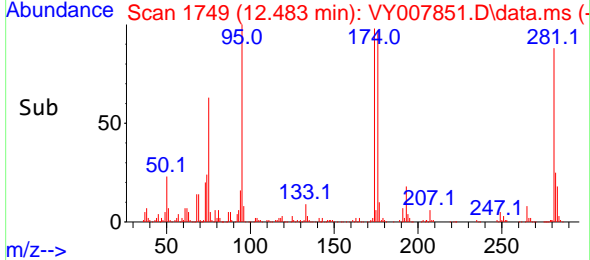


#62
 4-Bromofluorobenzene
 Concen: 44.794 ug/l
 RT: 12.483 min Scan# 11
 Delta R.T. 0.000 min
 Lab File: VY007851.D
 Acq: 11 Mar 2022 13:53

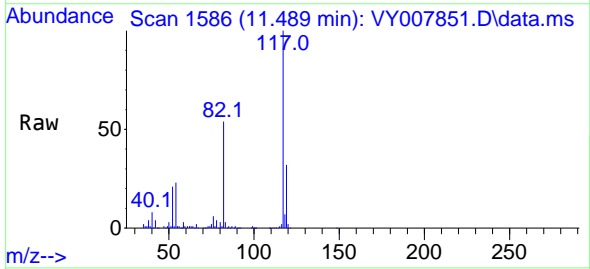
Instrument :
 MSVOA_Y
 ClientSampleId :
 CG-B1-030722-0-1



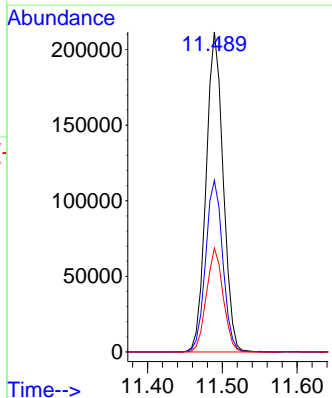
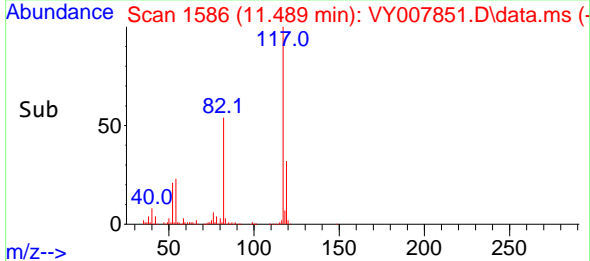
Tgt Ion: 95 Resp: 128410
 Ion Ratio Lower Upper
 95 100
 174 92.9 0.0 177.0
 176 89.9 0.0 175.8

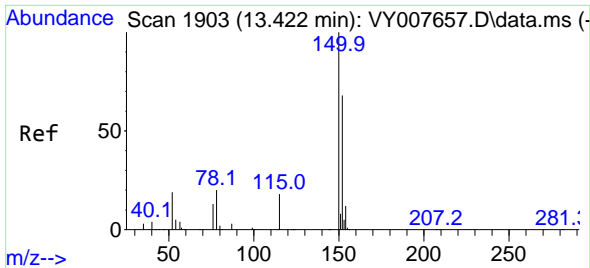


#63
 Chlorobenzene-d5
 Concen: 50.000 ug/l
 RT: 11.489 min Scan# 1586
 Delta R.T. -0.001 min
 Lab File: VY007851.D
 Acq: 11 Mar 2022 13:53



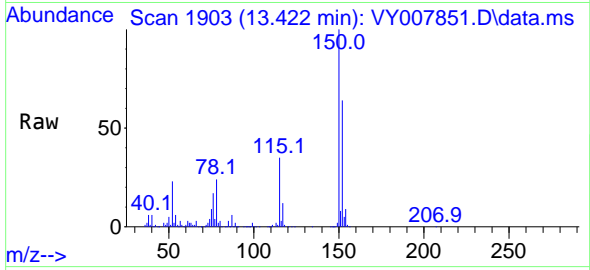
Tgt Ion: 117 Resp: 335891
 Ion Ratio Lower Upper
 117 100
 82 53.6 43.0 64.4
 119 32.4 25.4 38.0



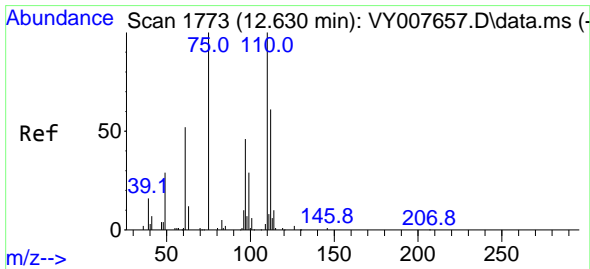
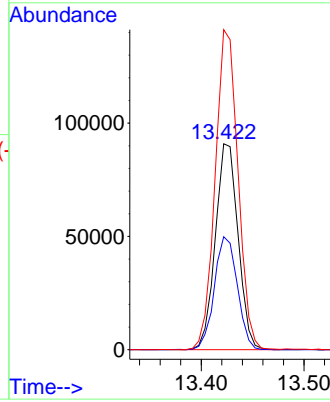
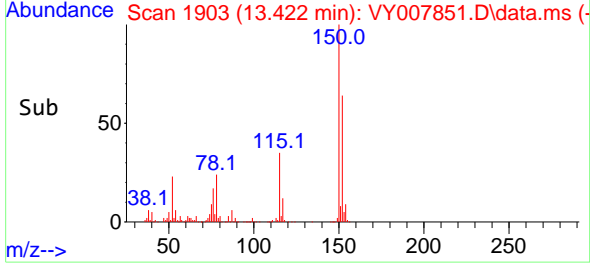


#72
 1,4-Dichlorobenzene-d4
 Concen: 50.000 ug/l
 RT: 13.422 min Scan# 1903
 Delta R.T. -0.000 min
 Lab File: VY007851.D
 Acq: 11 Mar 2022 13:53

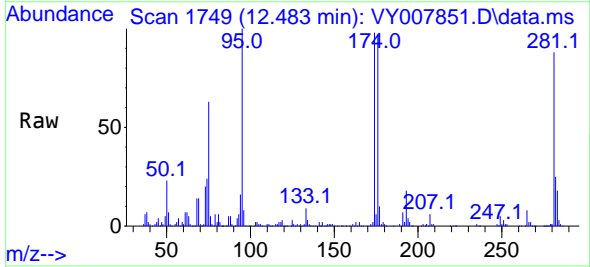
Instrument : MSVOA_Y
 ClientSampleId : CG-B1-030722-0-1



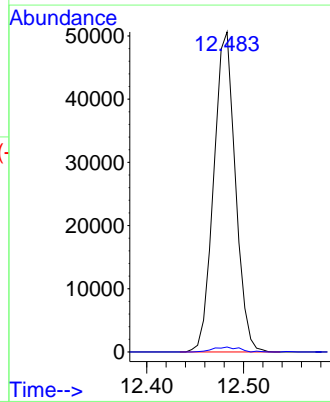
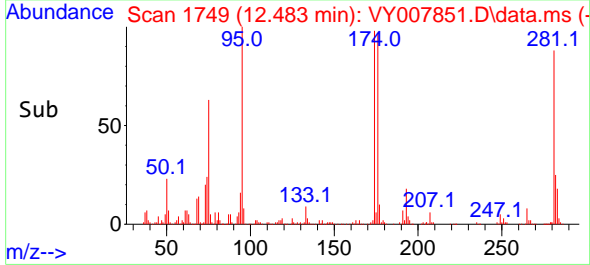
Tgt Ion:152 Resp: 139331
 Ion Ratio Lower Upper
 152 100
 115 55.6 28.2 84.7
 150 156.1 0.0 347.6

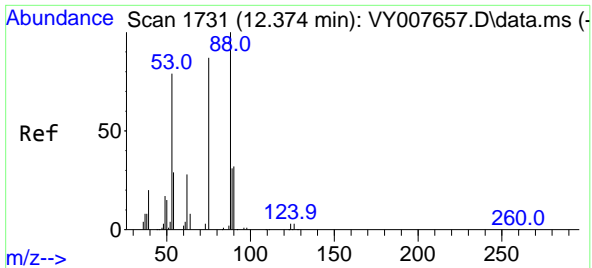


#76
 1,2,3-Trichloropropane
 Concen: 50.554 ug/l
 RT: 12.483 min Scan# 1749
 Delta R.T. -0.147 min
 Lab File: VY007851.D
 Acq: 11 Mar 2022 13:53



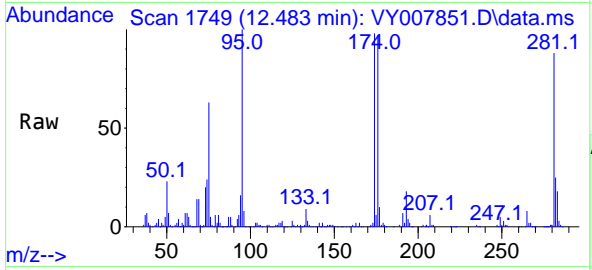
Tgt Ion: 75 Resp: 78662
 Ion Ratio Lower Upper
 75 100
 77 1.9 0.0 0.0#





#81
 trans-1,4-Dichloro-2-butene
 Concen: 103.351 ug/l
 RT: 12.483 min Scan# 1
 Delta R.T. 0.109 min
 Lab File: VY007851.D
 Acq: 11 Mar 2022 13:53

Instrument :
 MSVOA_Y
 ClientSampleId :
 CG-B1-030722-0-1



Tgt Ion: 75 Resp: 78662

Ion	Ratio	Lower	Upper
75	100		
53	0.1	85.3	127.9#
89	1.5	37.0	55.4#

