

Data Path : Z:\voasrv\HPCHEM1\MSVOA_Y\Data\VY031225\
 Data File : VY021511.D
 Acq On : 12 Mar 2025 15:57
 Operator : SY/MD
 Sample : Q1535-01
 Misc : 5.03g/5.5mL/MSVOA_Y/SOIL/B
 ALS Vial : 13 Sample Multiplier: 1

Instrument :
 MSVOA_Y
 ClientSampleId :
 SU-03-03102025

Integration Parameters: RTEINT.P
 Integrator: RTE
 Smoothing : ON Filtering: 5
 Sampling : 1 Min Area: 3 % of largest Peak
 Start Thrs: 0.2 Max Peaks: 100
 Stop Thrs : 0 Peak Location: TOP

If leading or trailing edge < 100 prefer < Baseline drop else tangent >
 Peak separation: 5

Method : Z:\voasrv\HPCHEM1\MSVOA_Y\methods\82Y030425S.M
 Title : SW846 8260

Signal : TIC: VY021511.D\data.ms

peak #	R.T. min	first scan	max scan	last scan	PK TY	peak height	corr. area	corr. % max.	% of total
1	6.896	839	849	850	rBV2	4840	9262	2.03%	0.414%
2	7.634	960	970	976	rBV	70945	174596	38.25%	7.813%
3	7.707	976	982	998	rVB	123030	283259	62.06%	12.676%
4	8.055	1028	1039	1052	rBV	59393	138177	30.27%	6.183%
5	8.615	1122	1131	1144	rBV	172551	352433	77.21%	15.771%
6	10.109	1368	1376	1385	rBV	261160	456441	100.00%	20.425%
7	10.511	1435	1442	1448	rBV2	6650	12610	2.76%	0.564%
8	11.249	1558	1563	1571	rVB3	3130	5563	1.22%	0.249%
9	11.414	1579	1590	1602	rBV	212473	357555	78.34%	16.000%
10	12.407	1746	1753	1763	rBV	135275	221777	48.59%	9.924%
11	13.346	1900	1907	1913	rBV	148117	222997	48.86%	9.979%

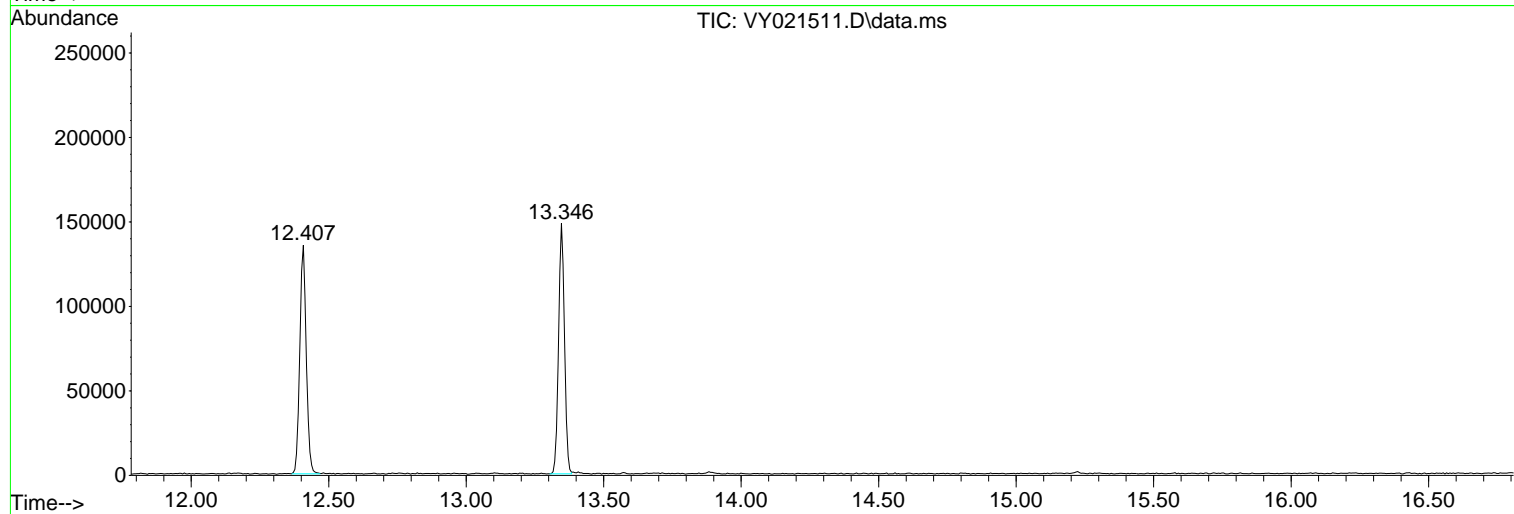
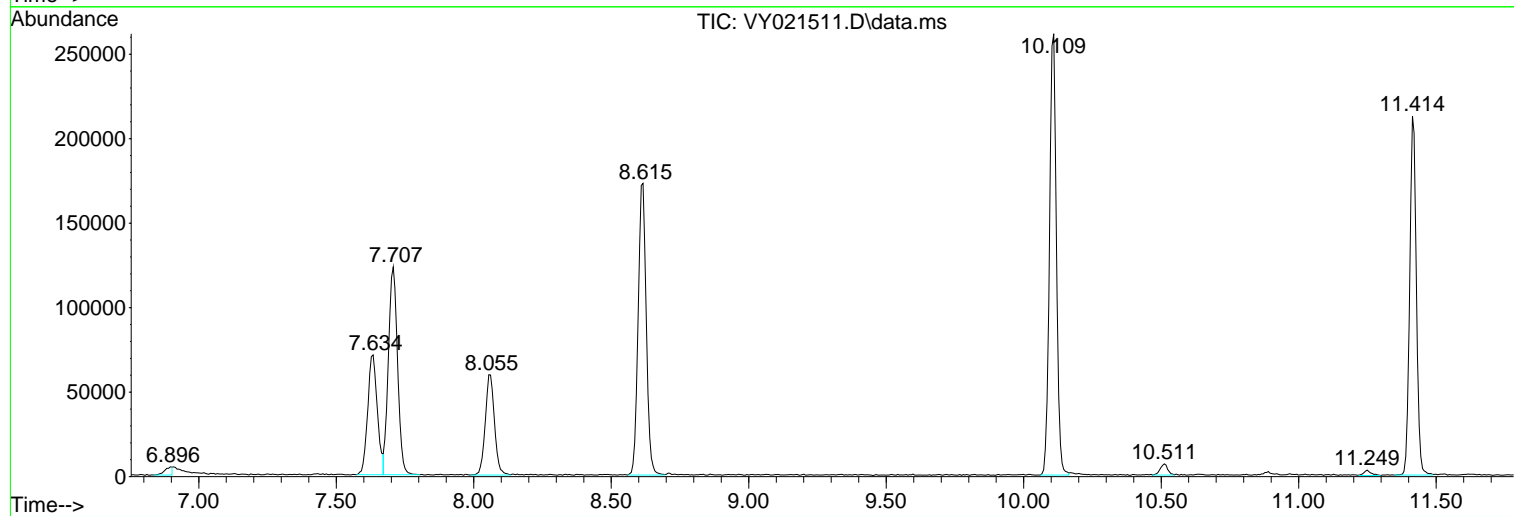
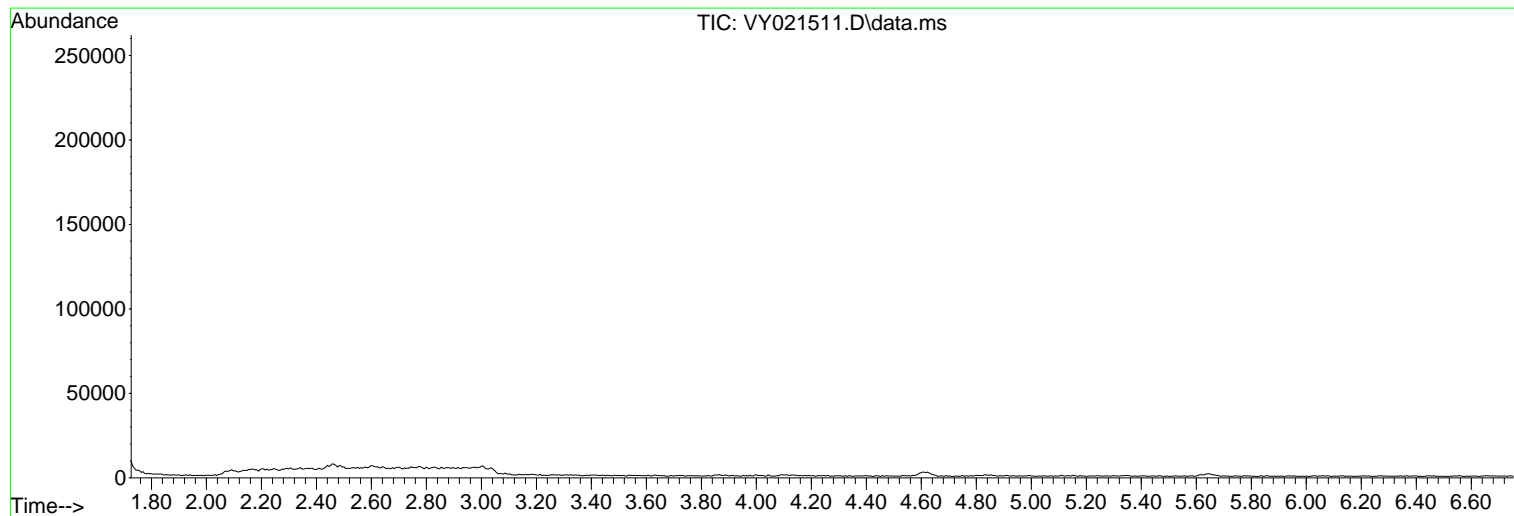
Sum of corrected areas: 2234670

Data Path : Z:\voasrv\HPCHEM1\MSVOA_Y\Data\VY031225\
Data File : VY021511.D
Acq On : 12 Mar 2025 15:57
Operator : SY/MD
Sample : Q1535-01
Misc : 5.03g/5.5mL/MSVOA_Y/SOIL/B
ALS Vial : 13 Sample Multiplier: 1

Instrument :
MSVOA_Y
ClientSampleId :
SU-03-03102025

Quant Method : Z:\voasrv\HPCHEM1\MSVOA_Y\methods\82Y030425S.M
Quant Title : SW846 8260

TIC Library : C:\Database\NIST20.L
TIC Integration Parameters: LSCINT.P



Library Search Compound Report

Data Path : Z:\voasrv\HPCHEM1\MSVOA_Y\Data\VY031225\
Data File : VY021511.D
Acq On : 12 Mar 2025 15:57
Operator : SY/MD
Sample : Q1535-01
Misc : 5.03g/5.5mL/MSVOA_Y/SOIL/B
ALS Vial : 13 Sample Multiplier: 1

Instrument :
MSVOA_Y
ClientSampleId :
SU-03-03102025

Quant Method : Z:\voasrv\HPCHEM1\MSVOA_Y\methods\82Y030425S.M
Quant Title : SW846 8260

TIC Library : C:\Database\NIST20.L
TIC Integration Parameters: LSCINT.P

No Library Search Compounds Detected

Data Path : Z:\voasrv\HPCHEM1\MSVOA_Y\Data\VY031225\
Data File : VY021511.D
Acq On : 12 Mar 2025 15:57
Operator : SY/MD
Sample : Q1535-01
Misc : 5.03g/5.5mL/MSVOA_Y/SOIL/B
ALS Vial : 13 Sample Multiplier: 1

Instrument :
MSVOA_Y
ClientSampleId :
SU-03-03102025

Quant Method : Z:\voasrv\HPCHEM1\MSVOA_Y\methods\82Y030425S.M
Quant Title : SW846 8260

TIC Library : C:\Database\NIST20.L
TIC Integration Parameters: LSCINT.P

TIC Top Hit name	RT	EstConc	Units	Response	#	RT	Resp	Conc
------------------	----	---------	-------	----------	---	----	------	------
