

Data Path : Z:\voasrv\HPCHEM1\MSVOA_Y\Data\VY031325\
 Data File : VY021517.D
 Acq On : 13 Mar 2025 11:27
 Operator : SY/MD
 Sample : VY0313SBL01
 Misc : 5.00g/5.0mL/MSVOA_Y/SOIL
 ALS Vial : 4 Sample Multiplier: 1

Instrument :
 MSVOA_Y
 ClientSampleId :
 VY0313SBL01

Quant Time: Mar 14 14:55:23 2025
 Quant Method : Z:\voasrv\HPCHEM1\MSVOA_Y\methods\82Y030425S.M
 Quant Title : SW846 8260
 QLast Update : Wed Mar 05 12:42:45 2025
 Response via : Initial Calibration

Compound	R.T.	QIon	Response	Conc	Units	Dev(Min)

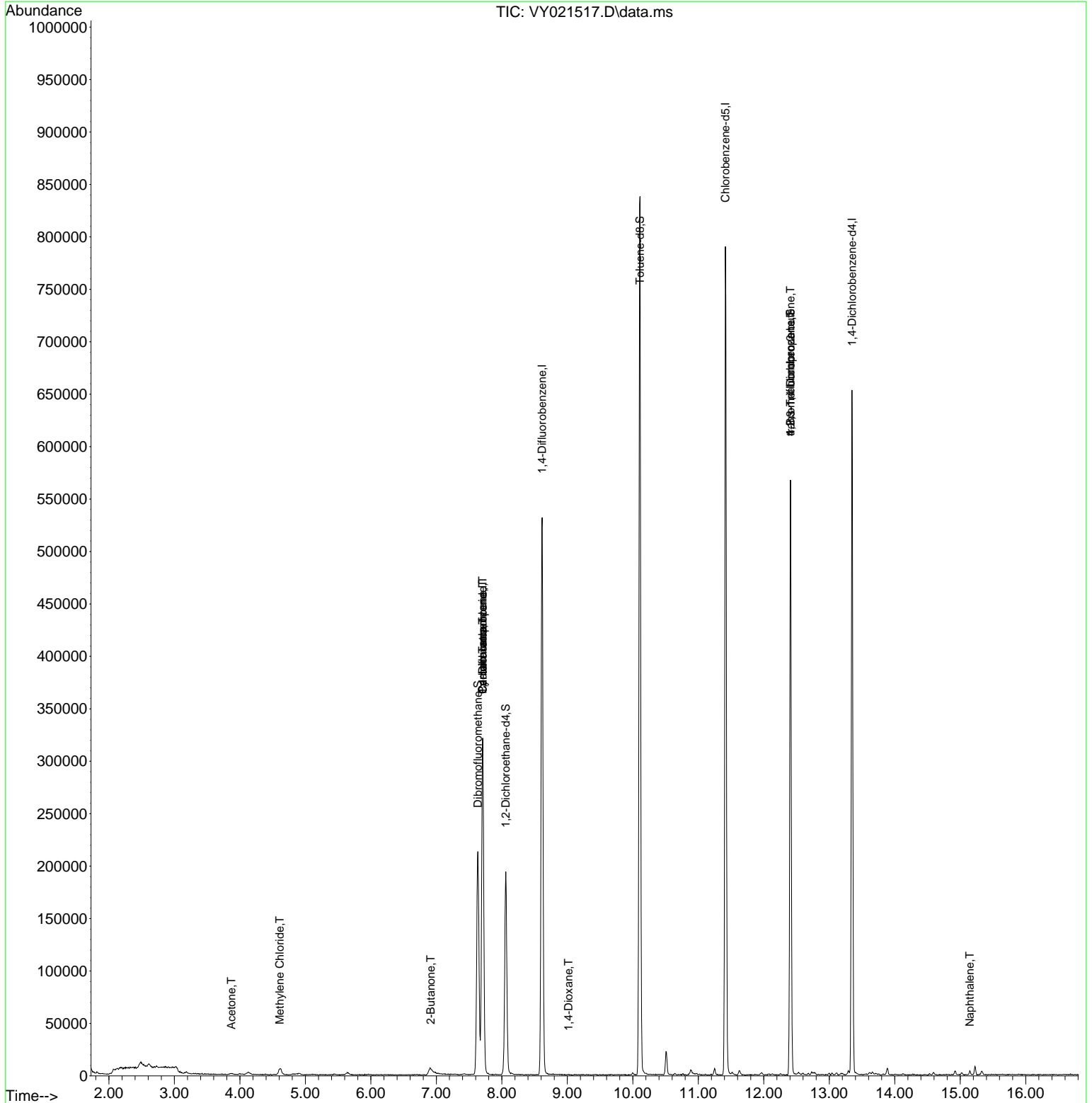
Internal Standards						
1) Pentafluorobenzene	7.707	168	239160	50.000	ug/l	0.00
34) 1,4-Difluorobenzene	8.616	114	443031	50.000	ug/l	0.00
63) Chlorobenzene-d5	11.414	117	398087	50.000	ug/l	0.00
72) 1,4-Dichlorobenzene-d4	13.346	152	156172	50.000	ug/l	0.00
System Monitoring Compounds						
33) 1,2-Dichloroethane-d4	8.061	65	149753	59.243	ug/l	0.00
Spiked Amount	50.000	Range	50 - 163	Recovery	=	118.480%
35) Dibromofluoromethane	7.634	113	150325	51.621	ug/l	0.00
Spiked Amount	50.000	Range	54 - 147	Recovery	=	103.240%
50) Toluene-d8	10.109	98	540551	49.024	ug/l	0.00
Spiked Amount	50.000	Range	58 - 134	Recovery	=	98.040%
62) 4-Bromofluorobenzene	12.408	95	164450	43.846	ug/l	0.00
Spiked Amount	50.000	Range	30 - 143	Recovery	=	87.700%
Target Compounds						
					Qvalue	
11) Tert butyl alcohol	4.836	59	1422	Below Cal	#	77
16) Acetone	3.873	43	1787	3.241	ug/l	94
20) Methylene Chloride	4.610	84	4067	1.405	ug/l	# 79
25) 2-Butanone	6.915	43	864	1.133	ug/l	# 87
31) Cyclohexane	7.707	56	5375	1.135	ug/l	# 1
36) 1,1-Dichloropropene	7.707	75	19450	4.267	ug/l	# 50
38) Carbon Tetrachloride	7.707	117	24953	4.760	ug/l	# 16
49) 1,4-Dioxane	9.018	88	38	2.177	ug/l	# 1
76) 1,2,3-Trichloropropane	12.408	75	88374	56.156	ug/l	# 100
81) trans-1,4-Dichloro-2-b...	12.408	75	88374	127.660	ug/l	# 9
95) Naphthalene	15.145	128	2514	2.043	ug/l	# 95

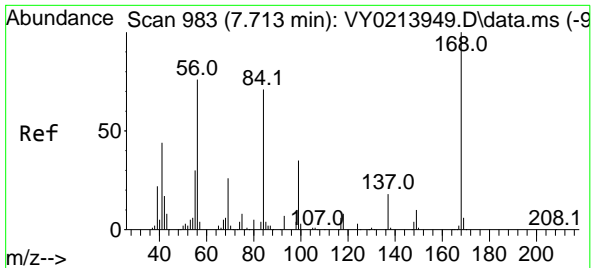
(#) = qualifier out of range (m) = manual integration (+) = signals summed

Data Path : Z:\voasrv\HPCHEM1\MSVOA_Y\Data\VY031325\
 Data File : VY021517.D
 Acq On : 13 Mar 2025 11:27
 Operator : SY/MD
 Sample : VY0313SBL01
 Misc : 5.00g/5.0mL/MSVOA_Y/SOIL
 ALS Vial : 4 Sample Multiplier: 1

Instrument :
 MSVOA_Y
ClientSampleId :
 VY0313SBL01

Quant Time: Mar 14 14:55:23 2025
 Quant Method : Z:\voasrv\HPCHEM1\MSVOA_Y\methods\82Y030425S.M
 Quant Title : SW846 8260
 QLast Update : Wed Mar 05 12:42:45 2025
 Response via : Initial Calibration

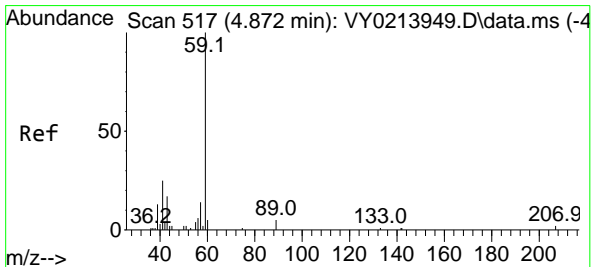
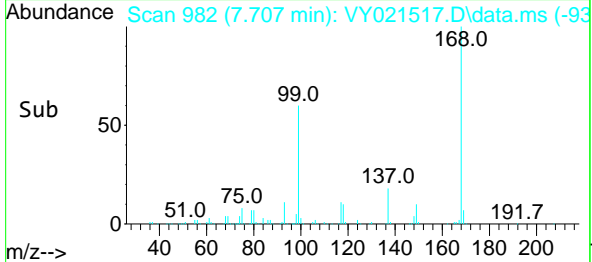
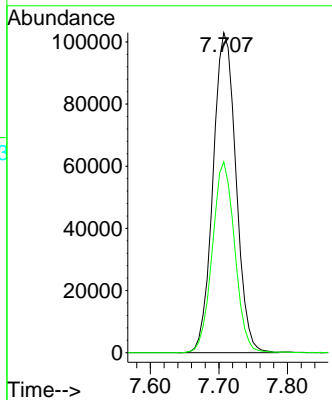
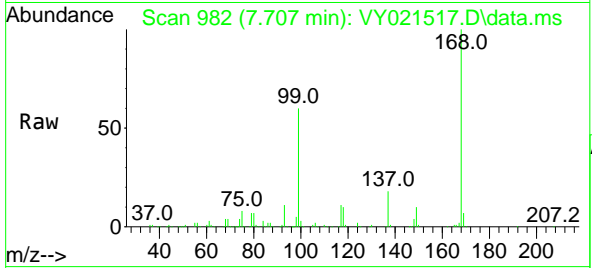




#1
 Pentafluorobenzene
 Concen: 50.000 ug/l
 RT: 7.707 min Scan# 91
 Delta R.T. -0.006 min
 Lab File: VY021517.D
 Acq: 13 Mar 2025 11:27

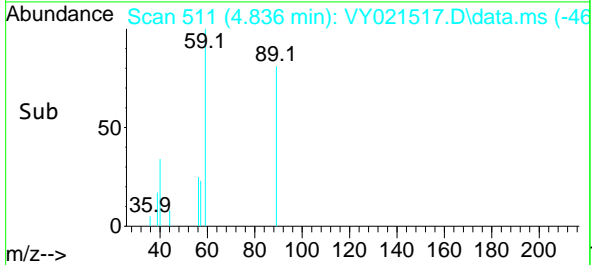
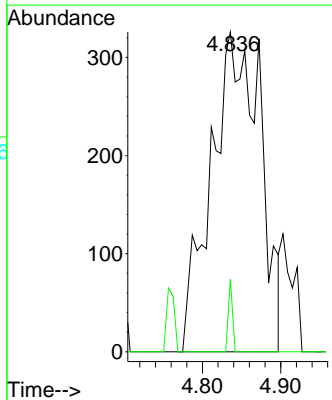
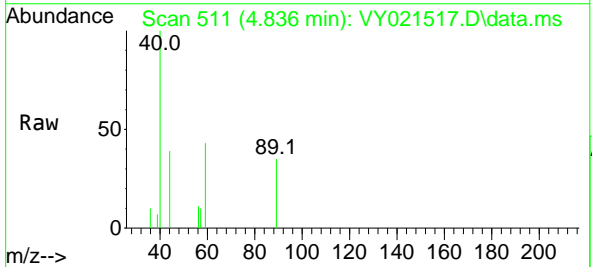
Instrument : MSVOA_Y
 ClientSampleId : VY0313SBL01

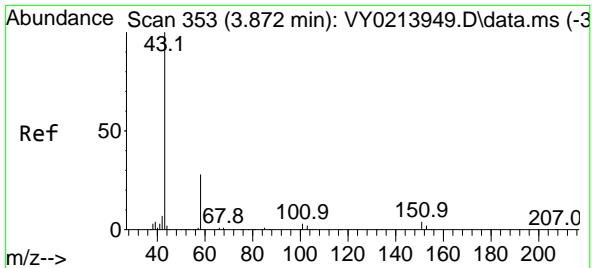
Tgt Ion:168 Resp: 239160
 Ion Ratio Lower Upper
 168 100
 99 59.6 46.0 69.0



#11
 Tert butyl alcohol
 Concen: Below Cal
 RT: 4.836 min Scan# 511
 Delta R.T. -0.036 min
 Lab File: VY021517.D
 Acq: 13 Mar 2025 11:27

Tgt Ion: 59 Resp: 1422
 Ion Ratio Lower Upper
 59 100
 57 1.9 8.2 12.4#

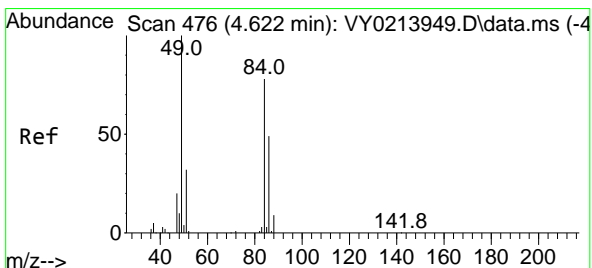
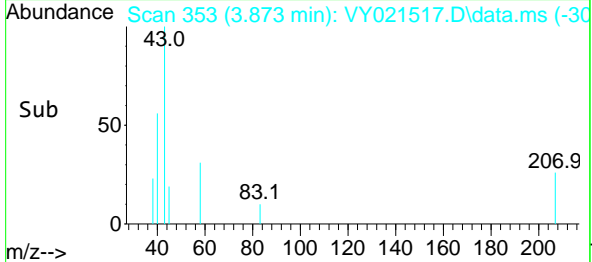
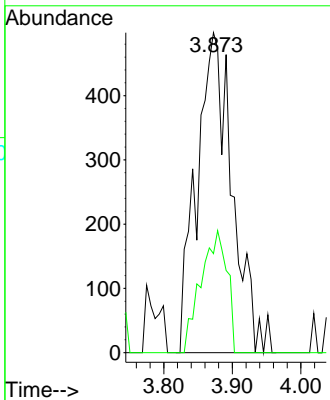
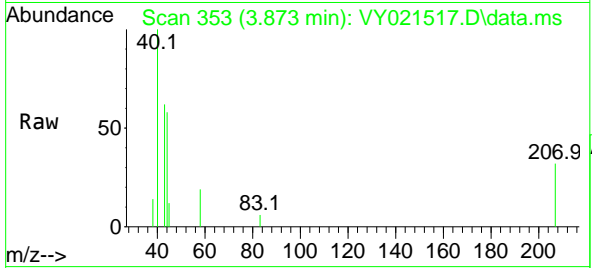




#16
 Acetone
 Concen: 3.241 ug/l
 RT: 3.873 min Scan# 31
 Delta R.T. 0.001 min
 Lab File: VY021517.D
 Acq: 13 Mar 2025 11:27

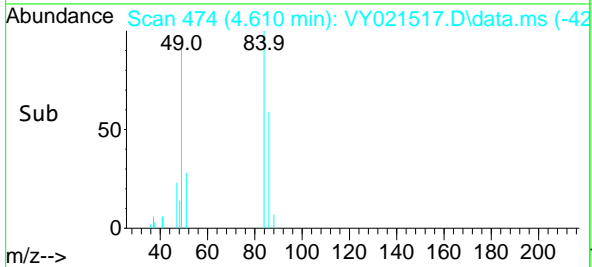
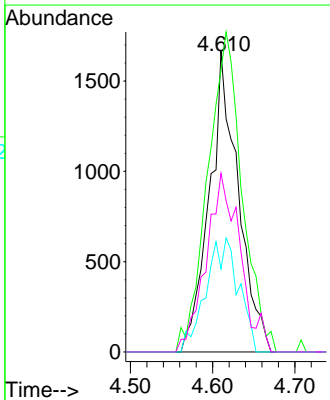
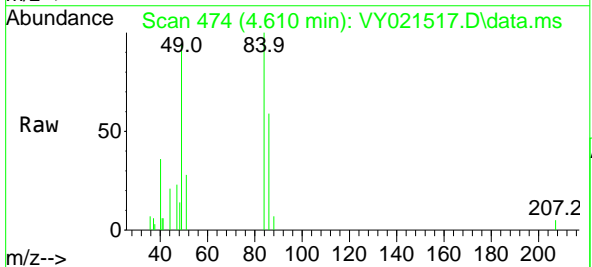
Instrument :
 MSVOA_Y
 ClientSampleId :
 VY0313SBL01

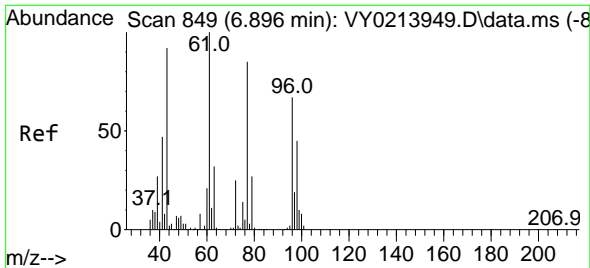
Tgt Ion: 43 Resp: 1787
 Ion Ratio Lower Upper
 43 100
 58 30.9 22.1 33.1



#20
 Methylene Chloride
 Concen: 1.405 ug/l
 RT: 4.610 min Scan# 474
 Delta R.T. -0.012 min
 Lab File: VY021517.D
 Acq: 13 Mar 2025 11:27

Tgt Ion: 84 Resp: 4067
 Ion Ratio Lower Upper
 84 100
 49 93.6 102.0 153.0#
 51 27.7 33.0 49.6#
 86 59.4 50.5 75.7

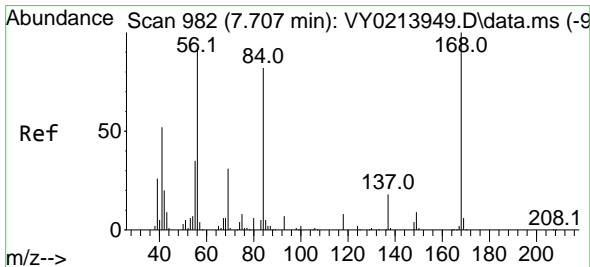
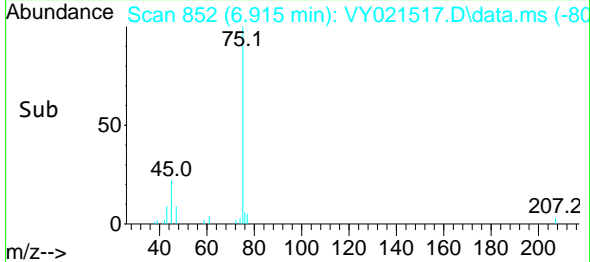
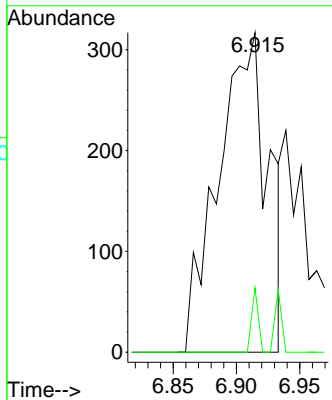
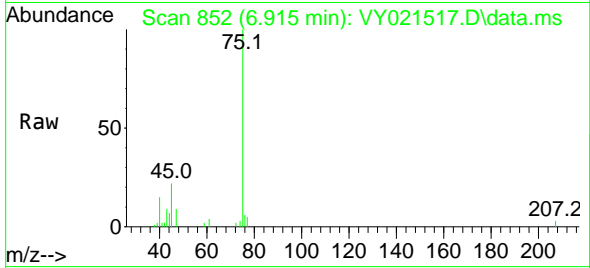




#25
 2-Butanone
 Concen: 1.133 ug/l
 RT: 6.915 min Scan# 81
 Delta R.T. 0.019 min
 Lab File: VY021517.D
 Acq: 13 Mar 2025 11:27

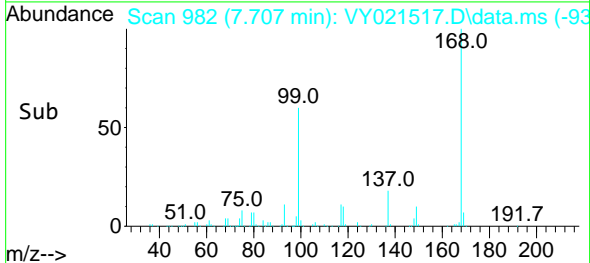
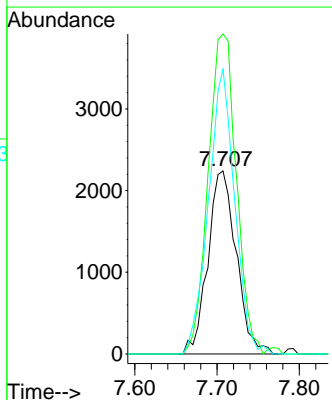
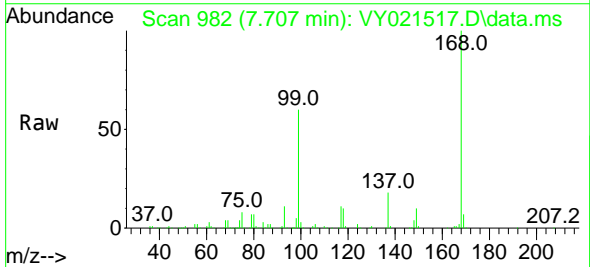
Instrument : MSVOA_Y
 ClientSampleId : VY0313SBL01

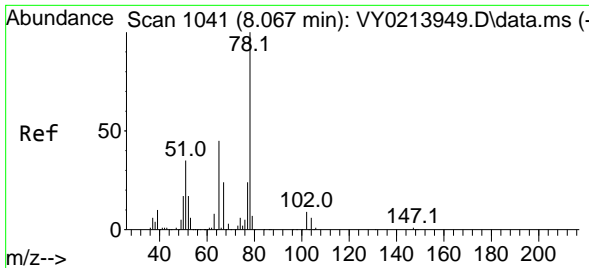
Tgt Ion: 43 Resp: 864
 Ion Ratio Lower Upper
 43 100
 72 20.2 21.4 32.0#



#31
 Cyclohexane
 Concen: 1.135 ug/l
 RT: 7.707 min Scan# 982
 Delta R.T. 0.000 min
 Lab File: VY021517.D
 Acq: 13 Mar 2025 11:27

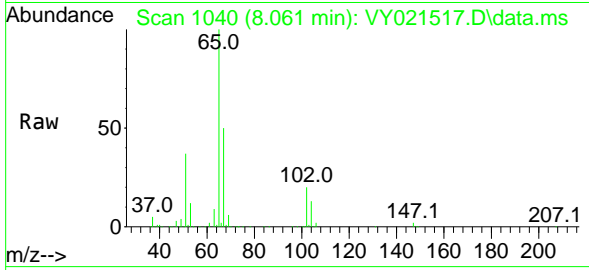
Tgt Ion: 56 Resp: 5375
 Ion Ratio Lower Upper
 56 100
 69 174.9 27.0 40.4#
 84 155.6 71.1 106.7#



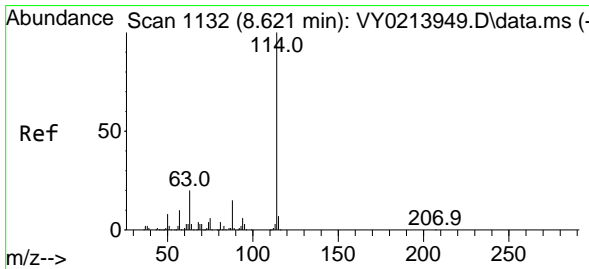
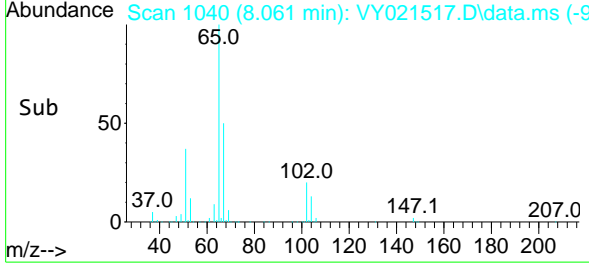
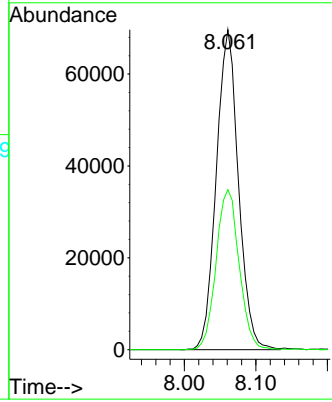


#33
 1,2-Dichloroethane-d4
 Concen: 59.243 ug/l
 RT: 8.061 min Scan# 1040
 Delta R.T. -0.006 min
 Lab File: VY021517.D
 Acq: 13 Mar 2025 11:27

Instrument : MSVOA_Y
 ClientSampleId : VY0313SBL01

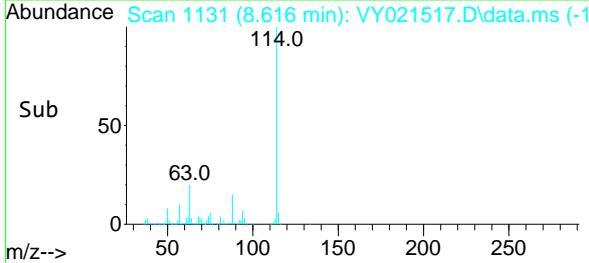
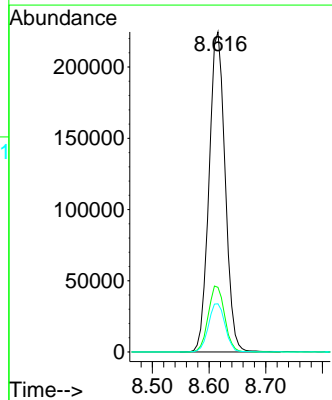
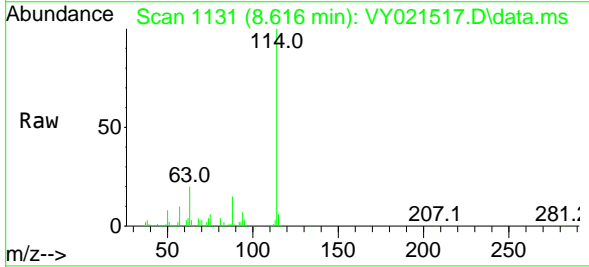


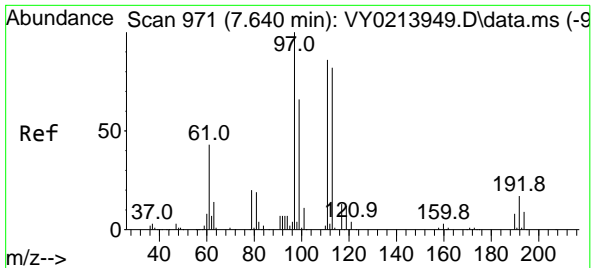
Tgt Ion: 65 Resp: 149753
 Ion Ratio Lower Upper
 65 100
 67 52.0 0.0 102.8



#34
 1,4-Difluorobenzene
 Concen: 50.000 ug/l
 RT: 8.616 min Scan# 1131
 Delta R.T. -0.006 min
 Lab File: VY021517.D
 Acq: 13 Mar 2025 11:27

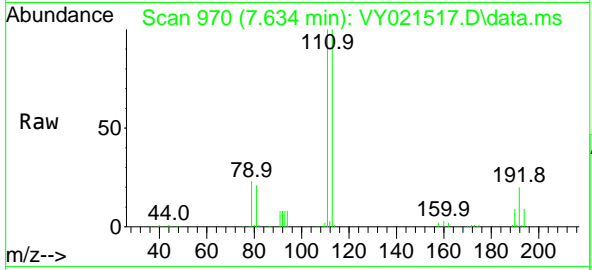
Tgt Ion: 114 Resp: 443031
 Ion Ratio Lower Upper
 114 100
 63 20.2 0.0 40.8
 88 15.1 0.0 30.8





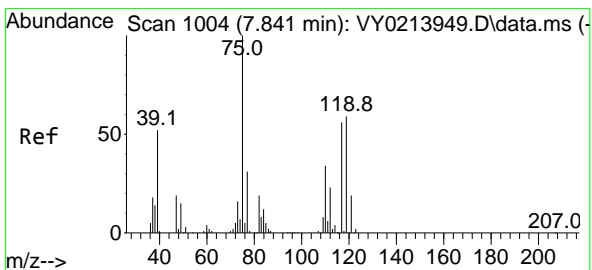
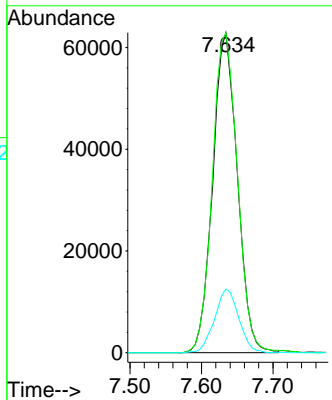
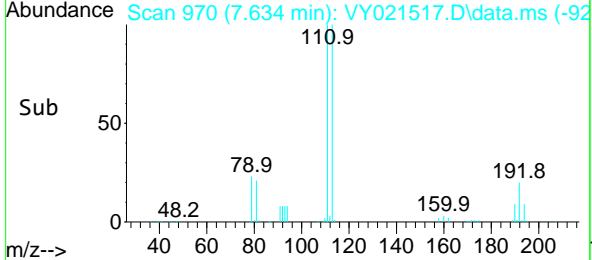
#35
 Dibromofluoromethane
 Concen: 51.621 ug/l
 RT: 7.634 min Scan# 91
 Delta R.T. -0.006 min
 Lab File: VY021517.D
 Acq: 13 Mar 2025 11:27

Instrument :
 MSVOA_Y
 ClientSampleId :
 VY0313SBL01

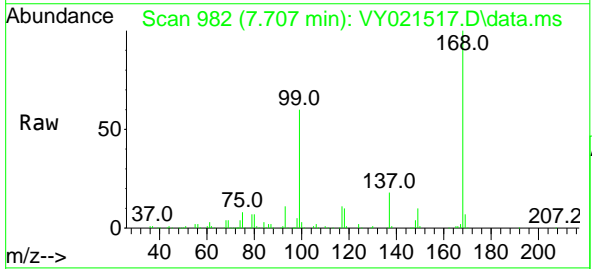


Tgt Ion: 113 Resp: 150325

Ion	Ratio	Lower	Upper
113	100		
111	102.1	82.0	123.0
192	19.5	15.9	23.9

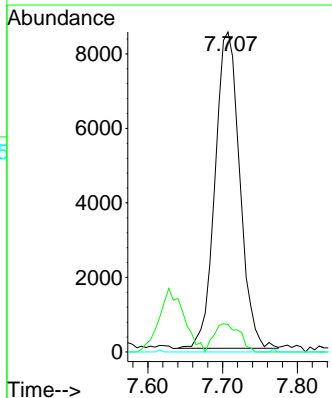
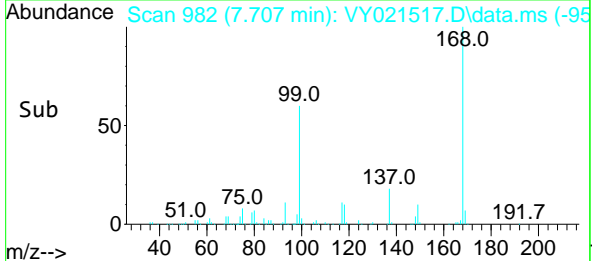


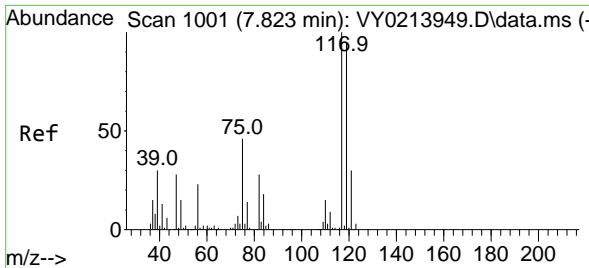
#36
 1,1-Dichloropropene
 Concen: 4.267 ug/l
 RT: 7.707 min Scan# 982
 Delta R.T. -0.134 min
 Lab File: VY021517.D
 Acq: 13 Mar 2025 11:27



Tgt Ion: 75 Resp: 19450

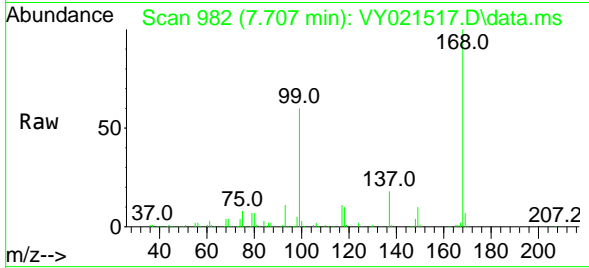
Ion	Ratio	Lower	Upper
75	100		
110	9.3	17.3	51.7#
77	0.0	25.4	38.2#



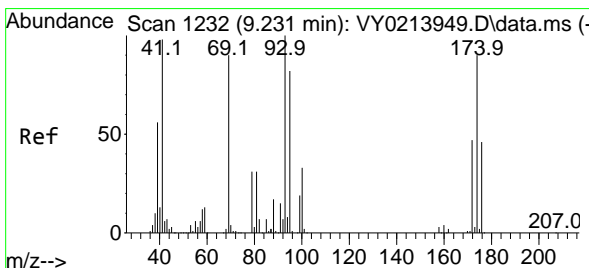
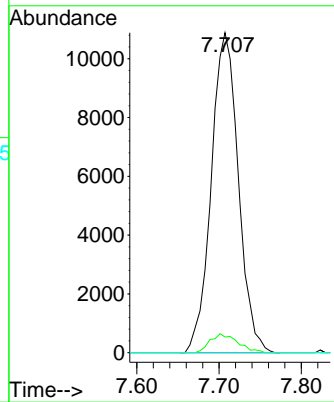
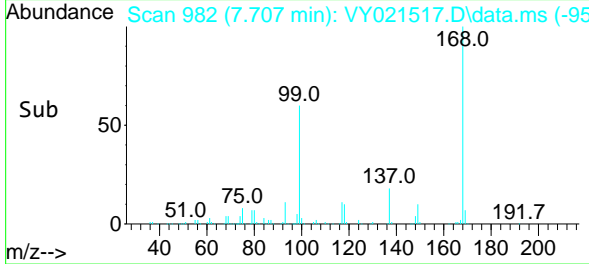


#38
 Carbon Tetrachloride
 Concen: 4.760 ug/l
 RT: 7.707 min Scan# 91
 Delta R.T. -0.116 min
 Lab File: VY021517.D
 Acq: 13 Mar 2025 11:27

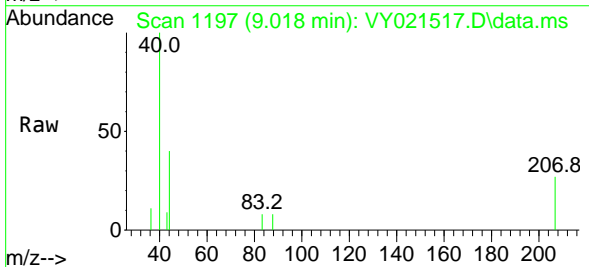
Instrument : MSVOA_Y
 ClientSampleId : VY0313SBL01



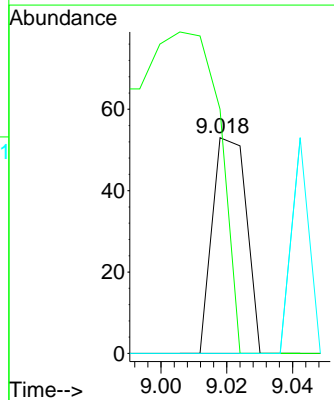
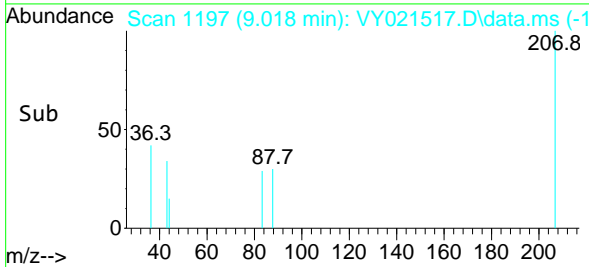
Tgt Ion:117 Resp: 24953
 Ion Ratio Lower Upper
 117 100
 119 4.9 75.8 113.8#
 121 0.0 23.9 35.9#

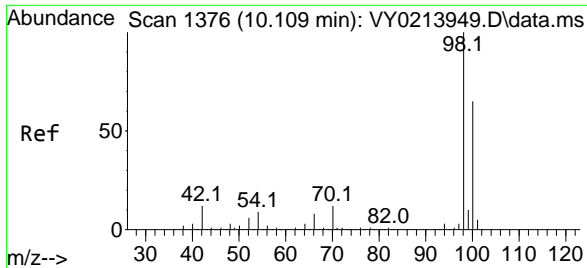


#49
 1,4-Dioxane
 Concen: 2.177 ug/l
 RT: 9.018 min Scan# 1197
 Delta R.T. -0.213 min
 Lab File: VY021517.D
 Acq: 13 Mar 2025 11:27



Tgt Ion: 88 Resp: 38
 Ion Ratio Lower Upper
 88 100
 43 413.2 25.0 37.4#
 58 0.0 58.4 87.6#

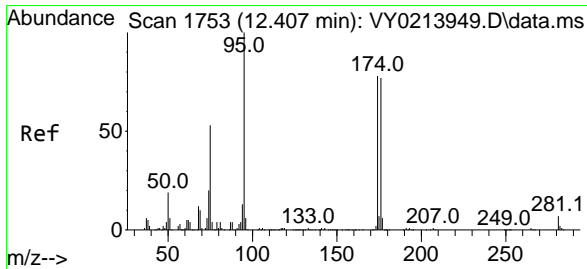
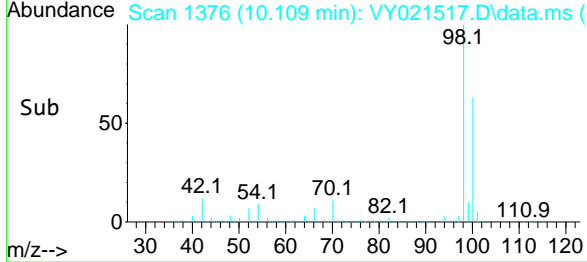
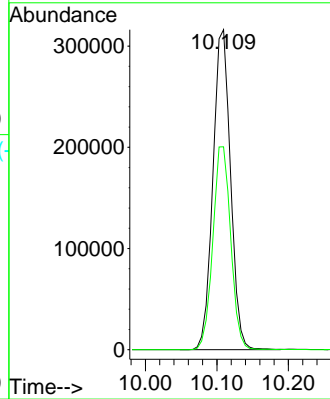
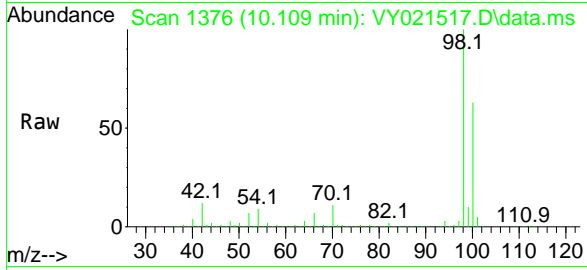




#50
 Toluene-d8
 Concen: 49.024 ug/l
 RT: 10.109 min Scan# 11
 Delta R.T. 0.000 min
 Lab File: VY021517.D
 Acq: 13 Mar 2025 11:27

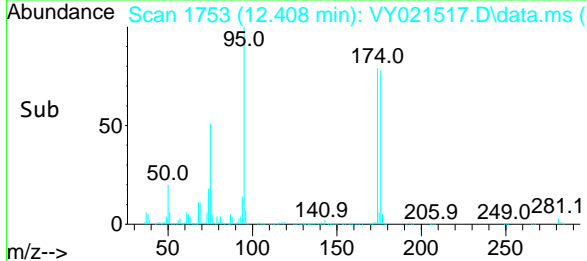
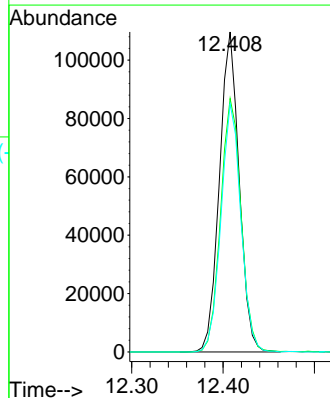
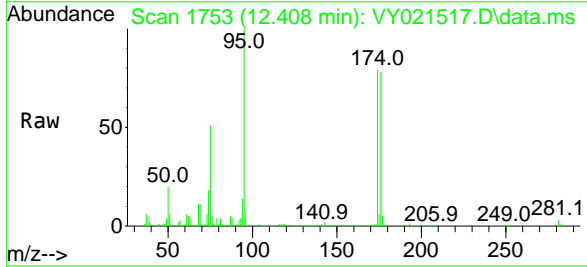
Instrument :
 MSVOA_Y
 ClientSampleId :
 VY0313SBL01

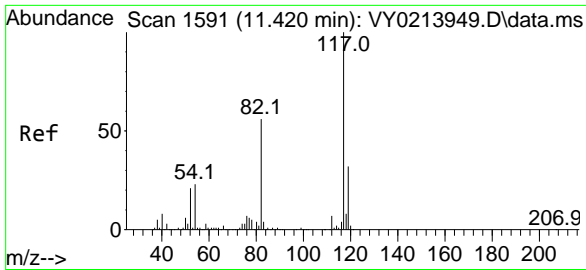
Tgt Ion: 98 Resp: 540551
 Ion Ratio Lower Upper
 98 100
 100 64.6 52.1 78.1



#62
 4-Bromofluorobenzene
 Concen: 43.846 ug/l
 RT: 12.408 min Scan# 1753
 Delta R.T. 0.000 min
 Lab File: VY021517.D
 Acq: 13 Mar 2025 11:27

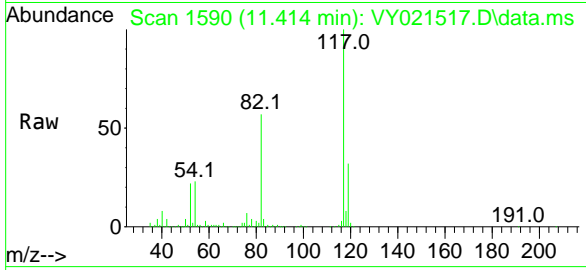
Tgt Ion: 95 Resp: 164450
 Ion Ratio Lower Upper
 95 100
 174 82.1 0.0 165.0
 176 78.4 0.0 160.0





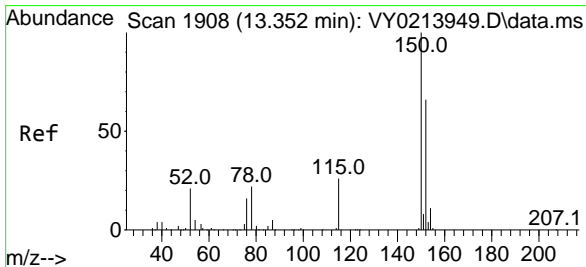
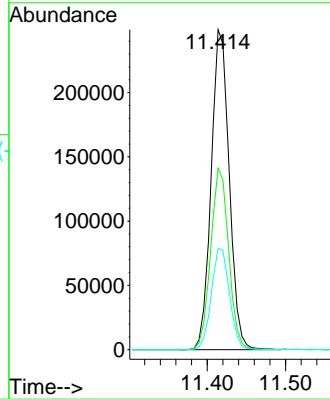
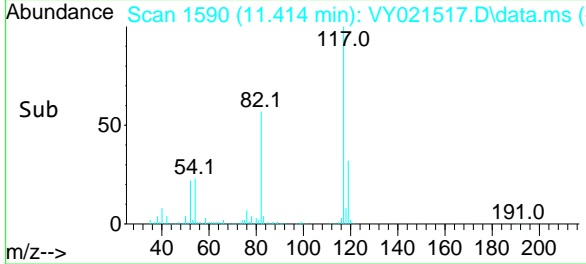
#63
 Chlorobenzene-d5
 Concen: 50.000 ug/l
 RT: 11.414 min Scan# 111
 Delta R.T. -0.006 min
 Lab File: VY021517.D
 Acq: 13 Mar 2025 11:27

Instrument : MSVOA_Y
 ClientSampleId : VY0313SBL01

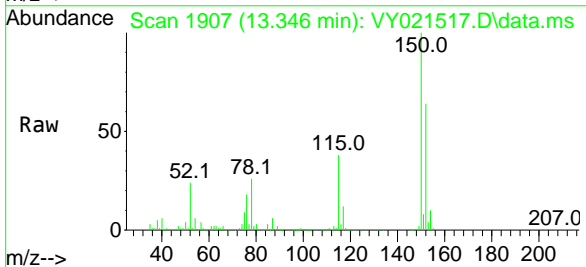


Tgt Ion:117 Resp: 398087

Ion	Ratio	Lower	Upper
117	100		
82	56.8	44.6	67.0
119	31.6	25.4	38.0

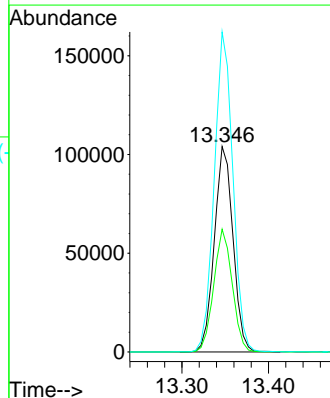
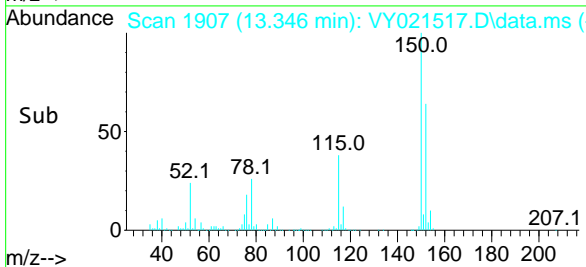


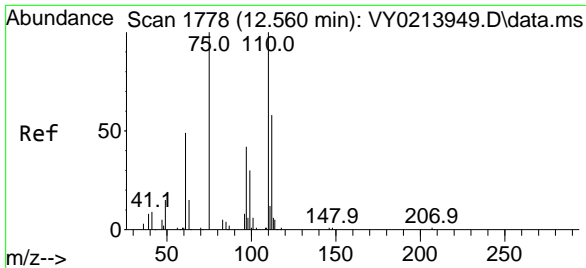
#72
 1,4-Dichlorobenzene-d4
 Concen: 50.000 ug/l
 RT: 13.346 min Scan# 1907
 Delta R.T. -0.006 min
 Lab File: VY021517.D
 Acq: 13 Mar 2025 11:27



Tgt Ion:152 Resp: 156172

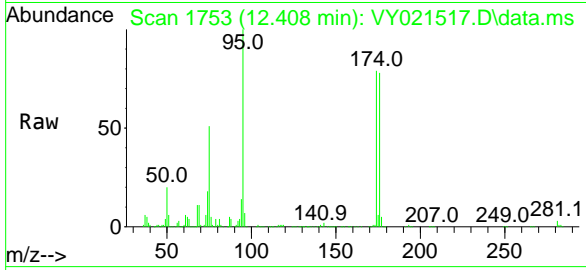
Ion	Ratio	Lower	Upper
152	100		
115	59.1	29.0	87.0
150	155.0	0.0	347.2



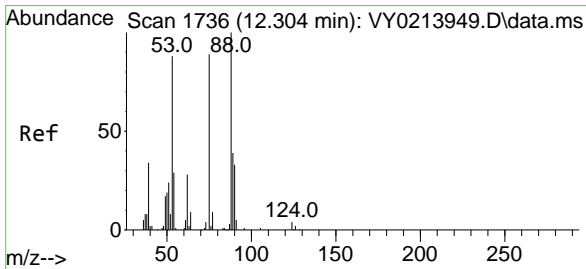
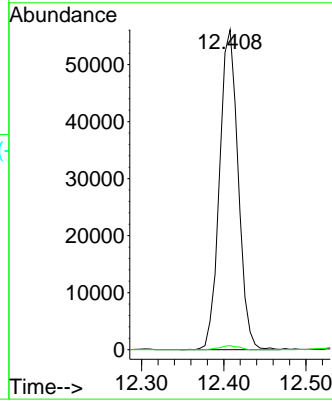
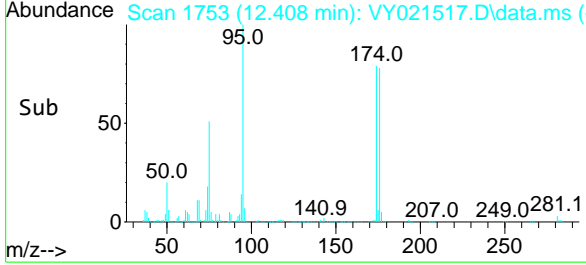


#76
 1,2,3-Trichloropropane
 Concen: 56.156 ug/l
 RT: 12.408 min Scan# 1753
 Delta R.T. -0.152 min
 Lab File: VY021517.D
 Acq: 13 Mar 2025 11:27

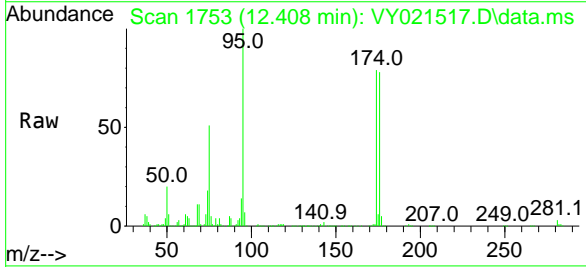
Instrument : MSVOA_Y
 ClientSampleId : VY0313SBL01



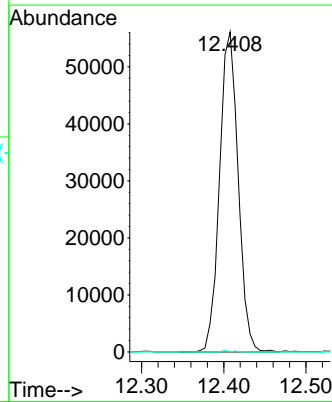
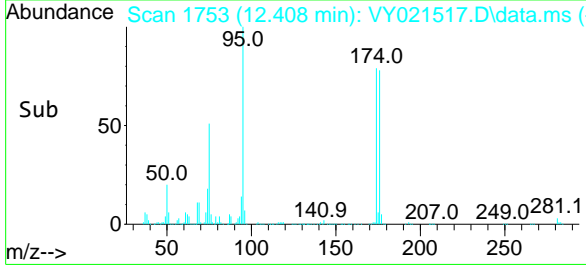
Tgt Ion: 75 Resp: 88374
 Ion Ratio Lower Upper
 75 100
 77 1.3 0.0 0.0#

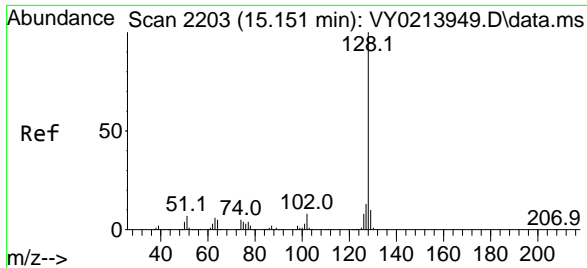


#81
 trans-1,4-Dichloro-2-butene
 Concen: 127.660 ug/l
 RT: 12.408 min Scan# 1753
 Delta R.T. 0.104 min
 Lab File: VY021517.D
 Acq: 13 Mar 2025 11:27



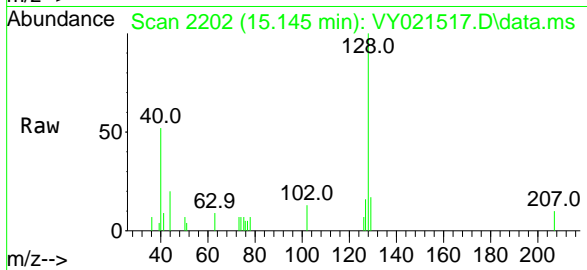
Tgt Ion: 75 Resp: 88374
 Ion Ratio Lower Upper
 75 100
 53 0.2 81.0 121.4#
 89 0.2 36.9 55.3#





#95
 Naphthalene
 Concen: 2.043 ug/l
 RT: 15.145 min Scan# 21
 Delta R.T. -0.006 min
 Lab File: VY021517.D
 Acq: 13 Mar 2025 11:27

Instrument :
 MSVOA_Y
 ClientSampleId :
 VY0313SBL01



Tgt Ion:128 Resp: 2514

Ion	Ratio	Lower	Upper
128	100		
127	12.2	10.6	15.8
129	14.0	8.6	13.0#

