

Data Path : Z:\voasrv\HPCHEM1\MSVOA_Y\Data\VY031822\
 Data File : VY007933.D
 Acq On : 19 Mar 2022 04:46
 Operator : SY/MD
 Sample : N1958-13
 Misc : 5.00g/5.0mL/MSVOA_Y/SOIL
 ALS Vial : 48 Sample Multiplier: 1

Instrument :
 MSVOA_Y
 ClientSampleId :
 C-13-12-13

Quant Time: Mar 21 03:20:20 2022
 Quant Method : Z:\voasrv\HPCHEM1\MSVOA_Y\methods\82Y031722S.M
 Quant Title : SW846 8260
 QLast Update : Thu Mar 17 13:55:34 2022
 Response via : Initial Calibration

Compound	R.T.	QIon	Response	Conc	Units	Dev(Min)

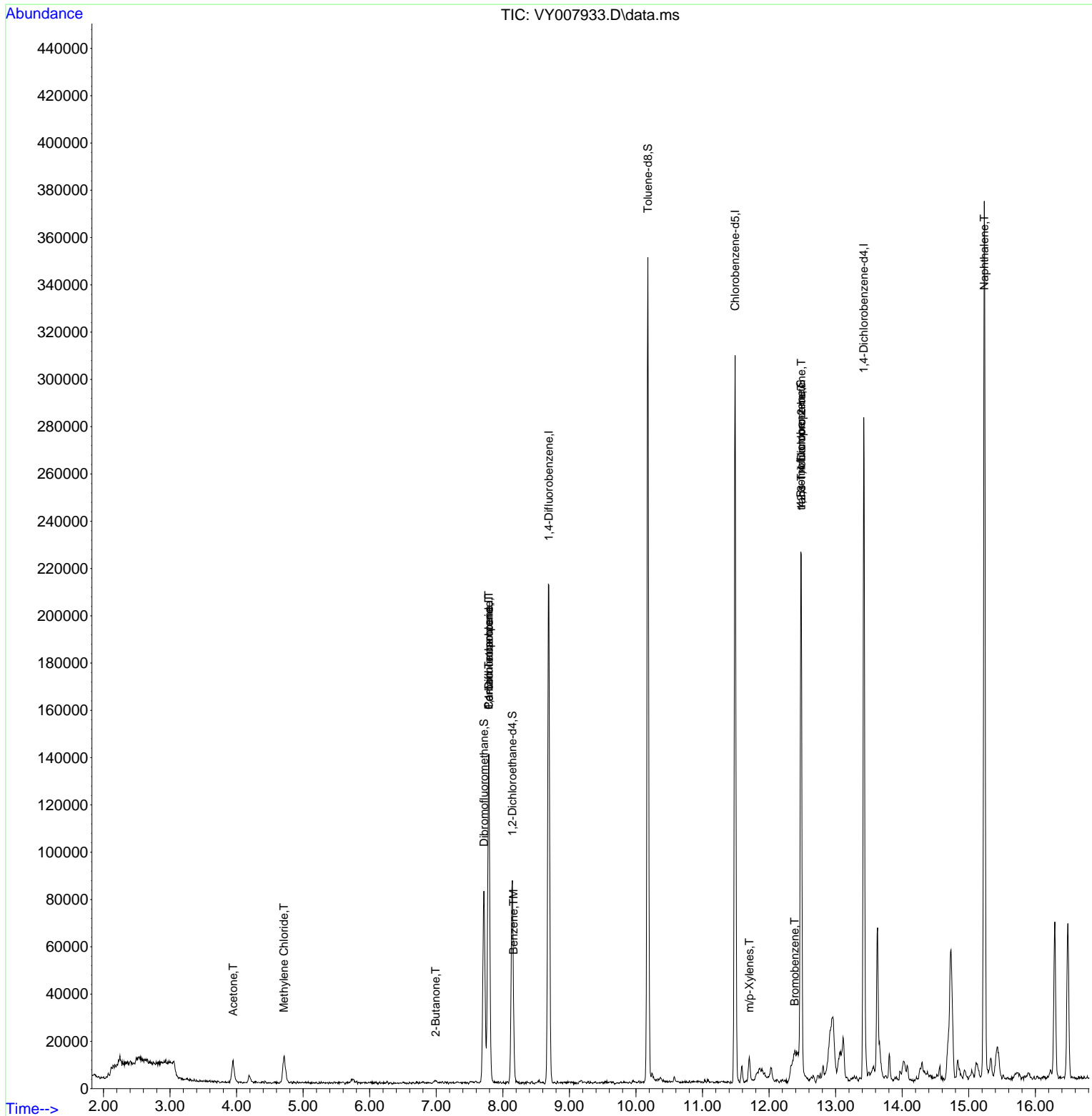
Internal Standards						
1) Pentafluorobenzene	7.789	168	102064	50.000	ug/l	0.00
34) 1,4-Difluorobenzene	8.691	114	183208	50.000	ug/l	0.00
63) Chlorobenzene-d5	11.490	117	159765	50.000	ug/l	0.00
72) 1,4-Dichlorobenzene-d4	13.422	152	66561	50.000	ug/l	0.00
System Monitoring Compounds						
33) 1,2-Dichloroethane-d4	8.143	65	62218	53.465	ug/l	0.00
Spiked Amount	50.000	Range 50 - 163	Recovery	=	106.920%	
35) Dibromofluoromethane	7.716	113	57078	44.361	ug/l	0.00
Spiked Amount	50.000	Range 54 - 147	Recovery	=	88.720%	
50) Toluene-d8	10.179	98	221685	58.002	ug/l	0.00
Spiked Amount	50.000	Range 49 - 140	Recovery	=	116.000%	
62) 4-Bromofluorobenzene	12.477	95	74057	40.105	ug/l	0.00
Spiked Amount	50.000	Range 25 - 144	Recovery	=	80.200%	
Target Compounds						
						Qvalue
3) Chloromethane	2.113	50	611	Below Cal		96
4) Vinyl Chloride	2.259	62	112	Below Cal	#	43
5) Bromomethane	2.662	94	214	Below Cal		90
16) Acetone	3.948	43	14349	46.479	ug/l #	71
17) Carbon Disulfide	4.198	76	5199	Below Cal	#	93
18) Methyl Acetate	4.472	43	352	Below Cal	#	56
20) Methylene Chloride	4.710	84	8266	2.513	ug/l #	87
25) 2-Butanone	6.990	43	1604	3.244	ug/l	95
31) Cyclohexane	7.783	56	2478	Below Cal	#	1
36) 1,1-Dichloropropene	7.789	75	8382	4.392	ug/l #	50
38) Carbon Tetrachloride	7.789	117	10803	5.298	ug/l #	16
39) Methylcyclohexane	9.185	83	411	Below Cal	#	57
40) Benzene	8.161	78	6671	1.196	ug/l	98
68) m/p-Xylenes	11.703	106	3112	1.170	ug/l	97
76) 1,2,3-Trichloropropane	12.483	75	39199	41.318	ug/l #	100
77) Bromobenzene	12.386	156	7322	5.469	ug/l #	1
81) trans-1,4-Dichloro-2-b...	12.483	75	39199	86.784	ug/l #	7
95) Naphthalene	15.233	128	298137	89.878	ug/l	98

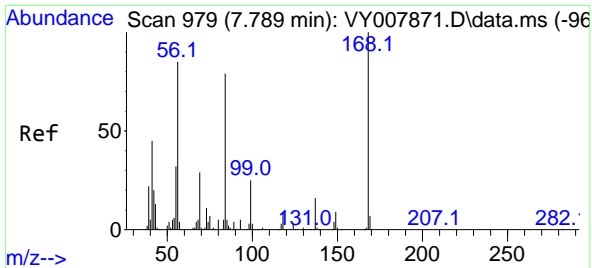
(#) = qualifier out of range (m) = manual integration (+) = signals summed

Data Path : Z:\voasrv\HPCHEM1\MSVOA_Y\Data\VY031822\
 Data File : VY007933.D
 Acq On : 19 Mar 2022 04:46
 Operator : SY/MD
 Sample : N1958-13
 Misc : 5.00g/5.0mL/MSVOA_Y/SOIL
 ALS Vial : 48 Sample Multiplier: 1

Instrument :
 MSVOA_Y
 ClientSampleId :
 C-13-12-13

Quant Time: Mar 21 03:20:20 2022
 Quant Method : Z:\voasrv\HPCHEM1\MSVOA_Y\methods\82Y031722S.M
 Quant Title : SW846 8260
 QLast Update : Thu Mar 17 13:55:34 2022
 Response via : Initial Calibration

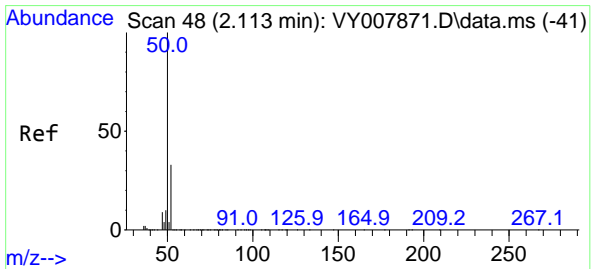
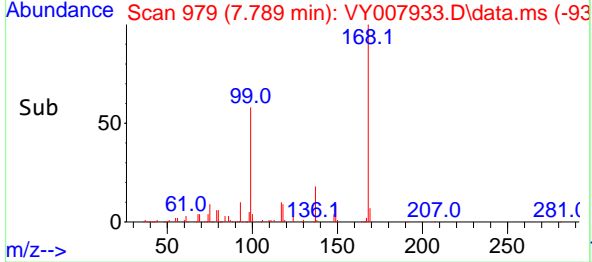
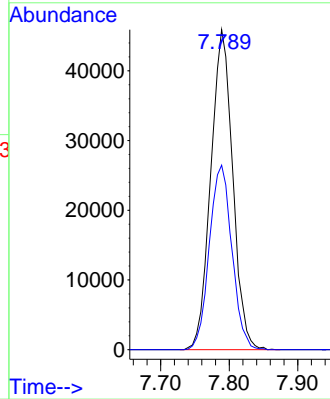
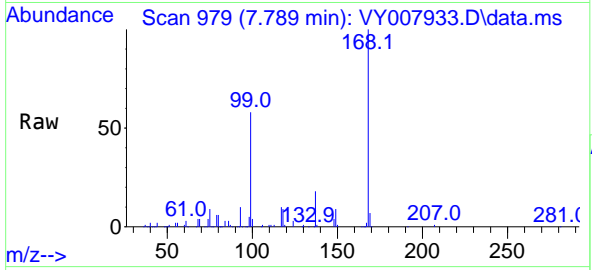




#1
 Pentafluorobenzene
 Concen: 50.000 ug/l
 RT: 7.789 min Scan# 91
 Delta R.T. -0.000 min
 Lab File: VY007933.D
 Acq: 19 Mar 2022 04:46

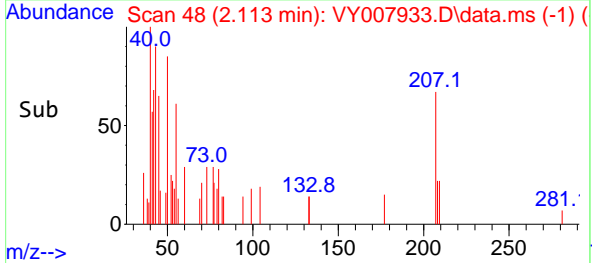
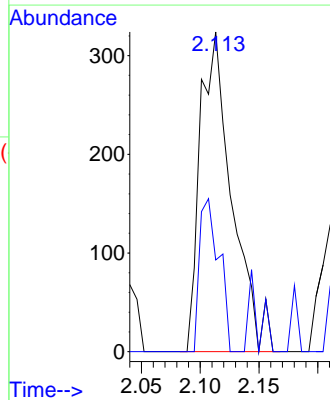
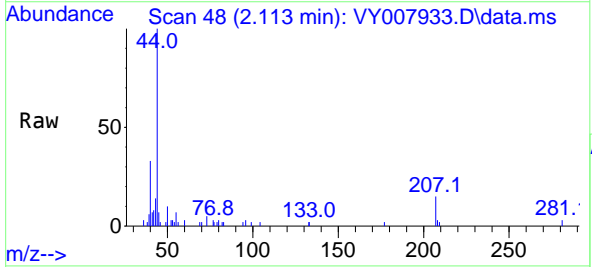
Instrument :
 MSVOA_Y
 ClientSampleId :
 C-13-12-13

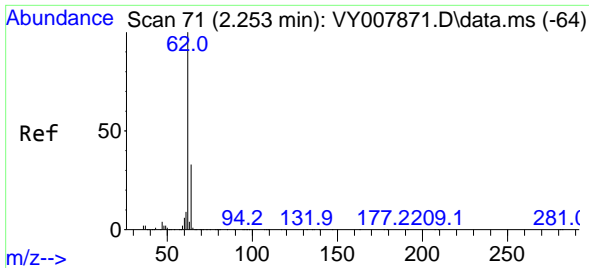
Tgt Ion:168 Resp: 102064
 Ion Ratio Lower Upper
 168 100
 99 57.6 46.9 70.3



#3
 Chloromethane
 Concen: Below Cal
 RT: 2.113 min Scan# 48
 Delta R.T. -0.000 min
 Lab File: VY007933.D
 Acq: 19 Mar 2022 04:46

Tgt Ion: 50 Resp: 611
 Ion Ratio Lower Upper
 50 100
 52 28.7 24.6 37.0

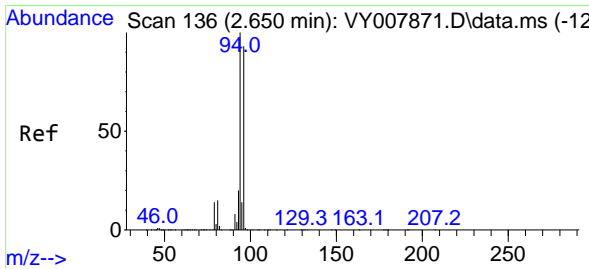
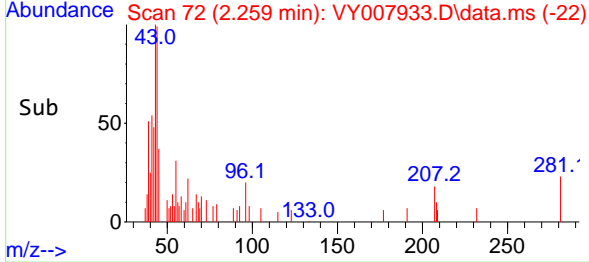
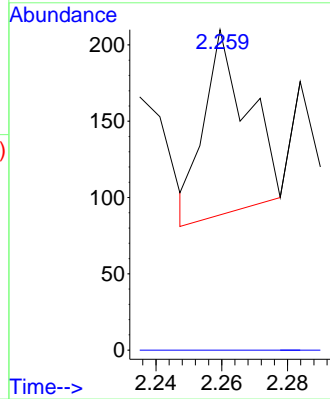
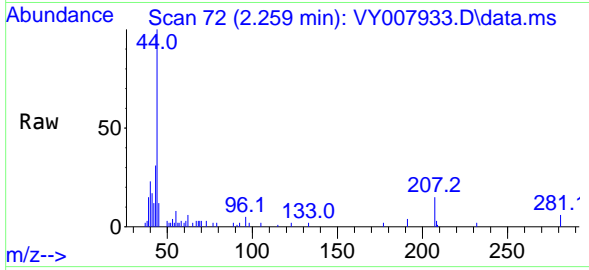




#4
 Vinyl Chloride
 Concen: Below Cal
 RT: 2.259 min Scan# 71
 Delta R.T. 0.006 min
 Lab File: VY007933.D
 Acq: 19 Mar 2022 04:46

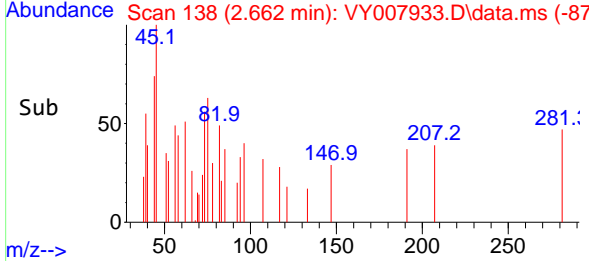
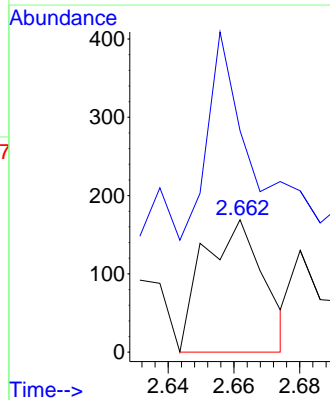
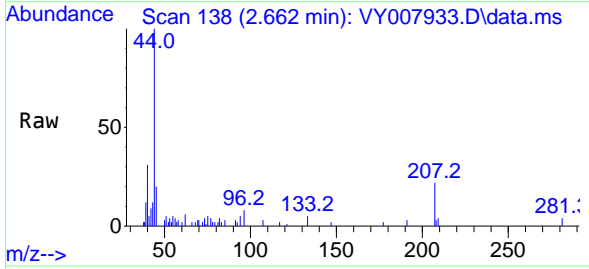
Instrument :
 MSVOA_Y
 ClientSampleId :
 C-13-12-13

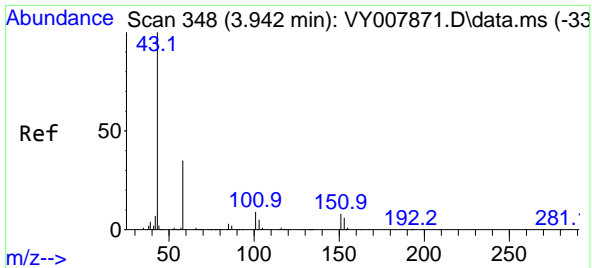
Tgt Ion: 62 Resp: 112
 Ion Ratio Lower Upper
 62 100
 64 0.0 25.0 37.6#



#5
 Bromomethane
 Concen: Below Cal
 RT: 2.662 min Scan# 138
 Delta R.T. 0.012 min
 Lab File: VY007933.D
 Acq: 19 Mar 2022 04:46

Tgt Ion: 94 Resp: 214
 Ion Ratio Lower Upper
 94 100
 96 82.8 73.5 110.3

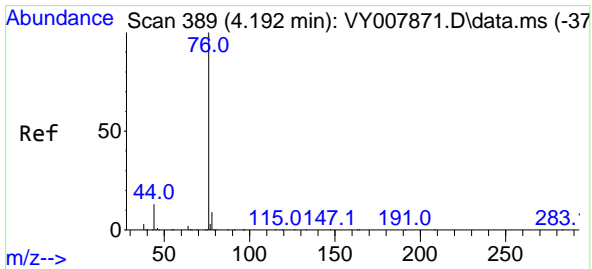
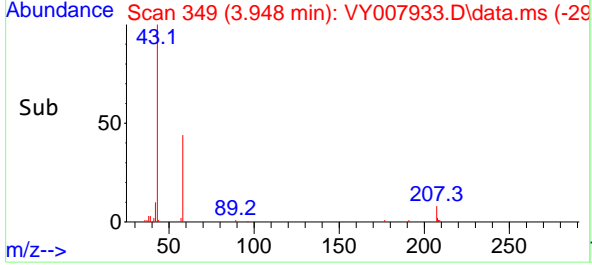
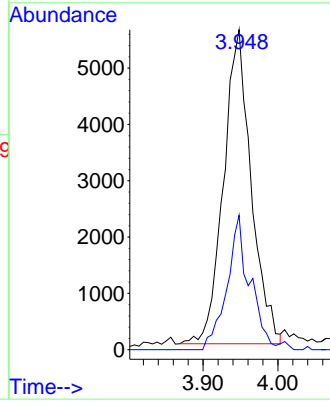
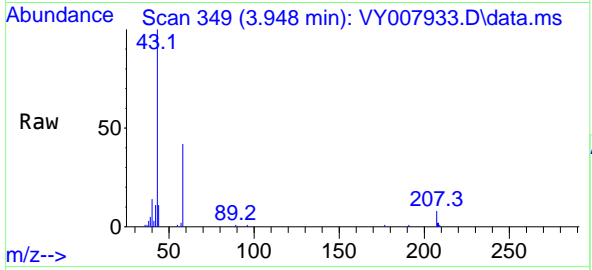




#16
 Acetone
 Concen: 46.479 ug/l
 RT: 3.948 min Scan# 34
 Delta R.T. 0.006 min
 Lab File: VY007933.D
 Acq: 19 Mar 2022 04:46

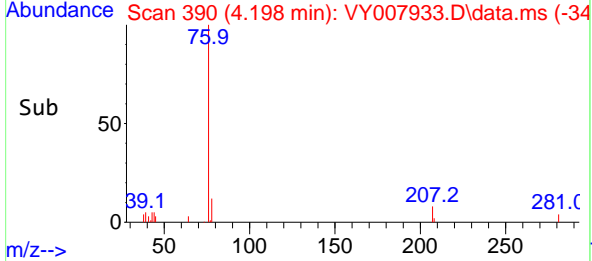
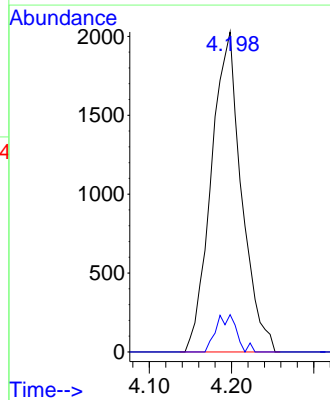
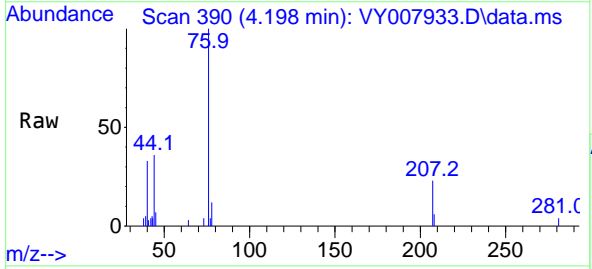
Instrument : MSVOA_Y
 ClientSampleId : C-13-12-13

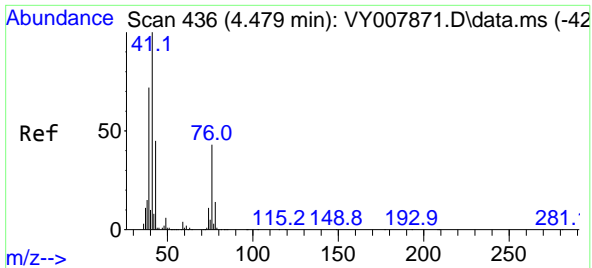
Tgt Ion: 43 Resp: 14349
 Ion Ratio Lower Upper
 43 100
 58 42.8 22.0 33.0#



#17
 Carbon Disulfide
 Concen: Below Cal
 RT: 4.198 min Scan# 390
 Delta R.T. 0.006 min
 Lab File: VY007933.D
 Acq: 19 Mar 2022 04:46

Tgt Ion: 76 Resp: 5199
 Ion Ratio Lower Upper
 76 100
 78 11.6 7.4 11.0#

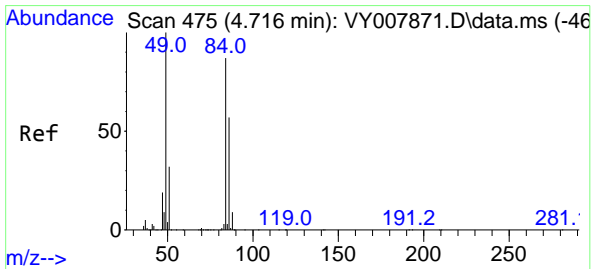
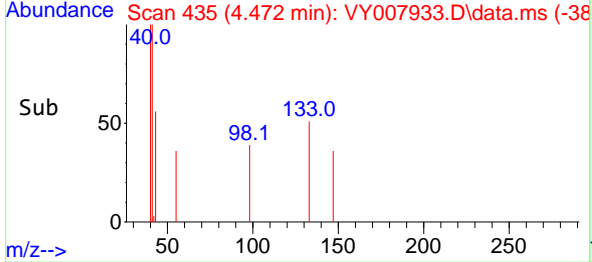
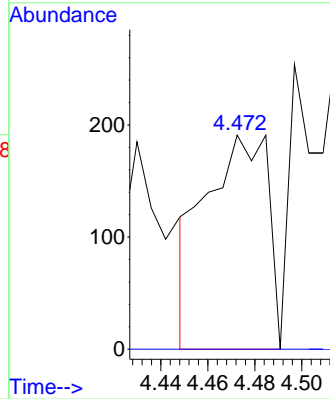
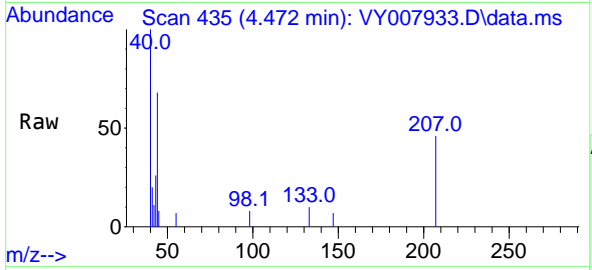




#18
 Methyl Acetate
 Concen: Below Cal
 RT: 4.472 min Scan# 41
 Delta R.T. -0.000 min
 Lab File: VY007933.D
 Acq: 19 Mar 2022 04:46

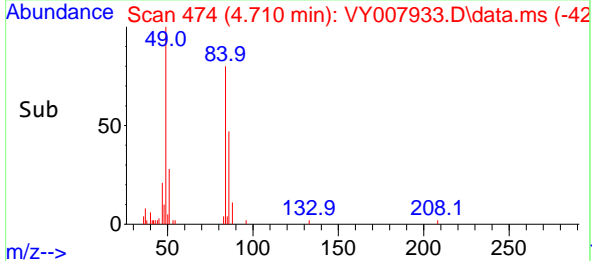
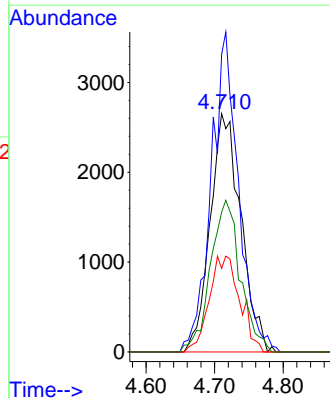
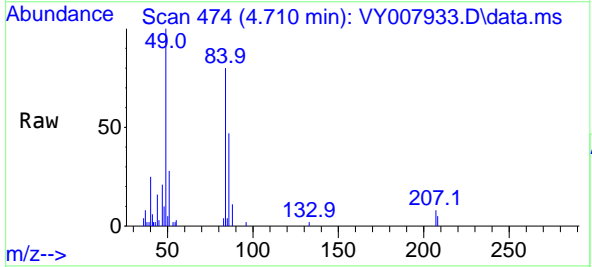
Instrument :
 MSVOA_Y
 ClientSampleId :
 C-13-12-13

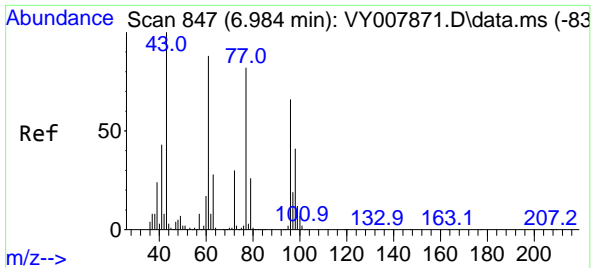
Tgt Ion: 43 Resp: 352
 Ion Ratio Lower Upper
 43 100
 74 0.0 16.6 24.8#



#20
 Methylene Chloride
 Concen: 2.513 ug/l
 RT: 4.710 min Scan# 474
 Delta R.T. -0.006 min
 Lab File: VY007933.D
 Acq: 19 Mar 2022 04:46

Tgt Ion: 84 Resp: 8266
 Ion Ratio Lower Upper
 84 100
 49 124.9 114.4 171.6
 51 35.1 35.3 52.9#
 86 58.7 53.7 80.5

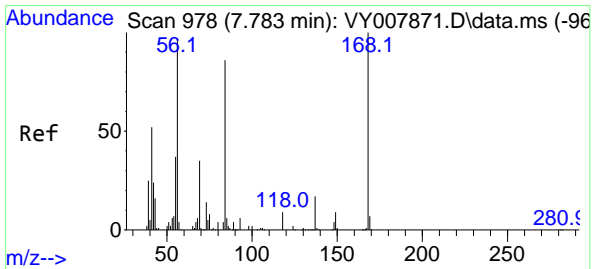
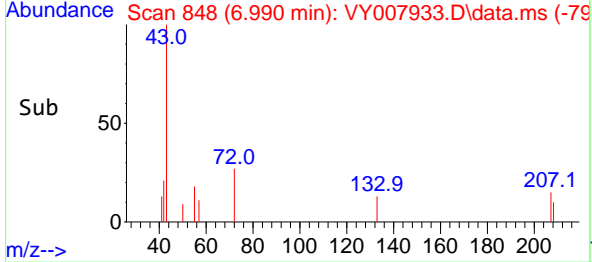
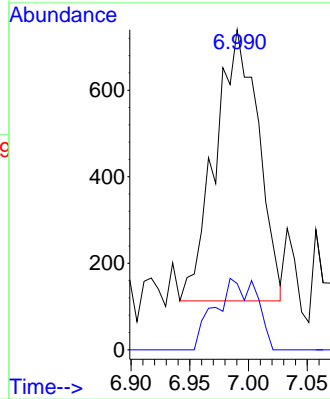
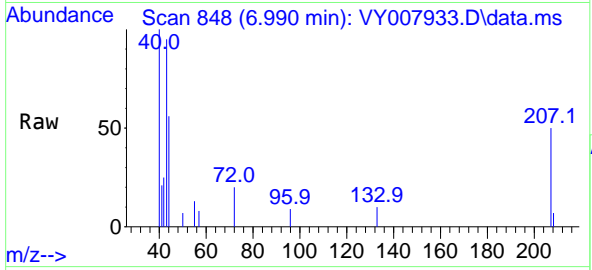




#25
 2-Butanone
 Concen: 3.244 ug/l
 RT: 6.990 min Scan# 84
 Delta R.T. 0.006 min
 Lab File: VY007933.D
 Acq: 19 Mar 2022 04:46

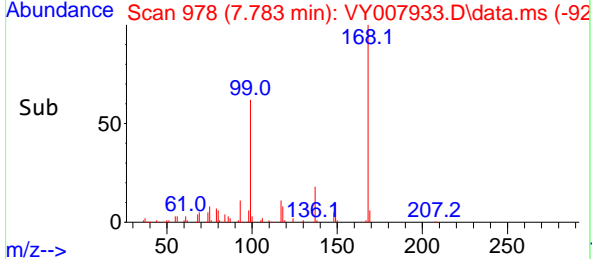
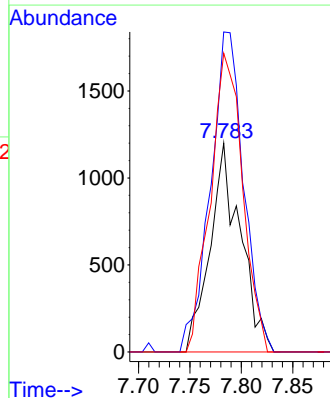
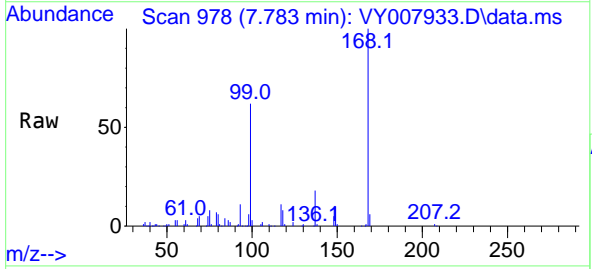
Instrument :
 MSVOA_Y
 ClientSampleId :
 C-13-12-13

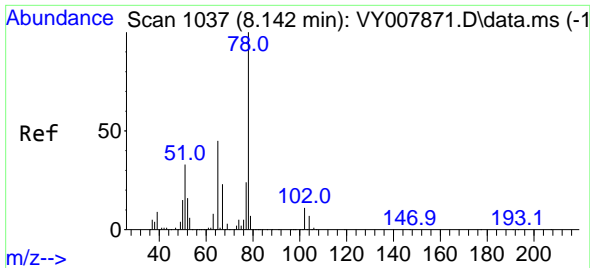
Tgt Ion: 43 Resp: 1604
 Ion Ratio Lower Upper
 43 100
 72 24.4 17.7 26.5



#31
 Cyclohexane
 Concen: Below Cal
 RT: 7.783 min Scan# 978
 Delta R.T. -0.000 min
 Lab File: VY007933.D
 Acq: 19 Mar 2022 04:46

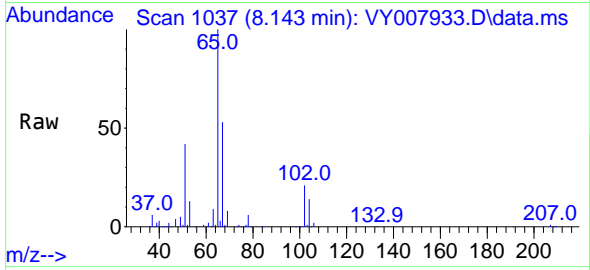
Tgt Ion: 56 Resp: 2478
 Ion Ratio Lower Upper
 56 100
 69 153.3 26.7 40.1#
 84 143.1 67.2 100.8#



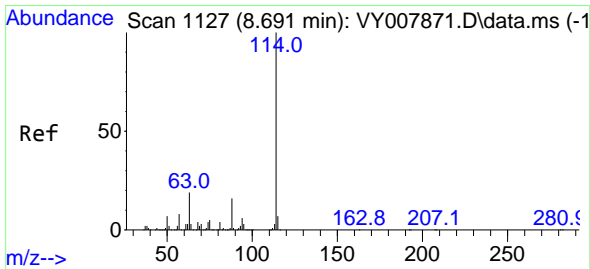
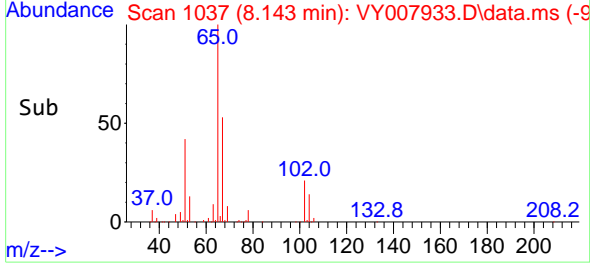
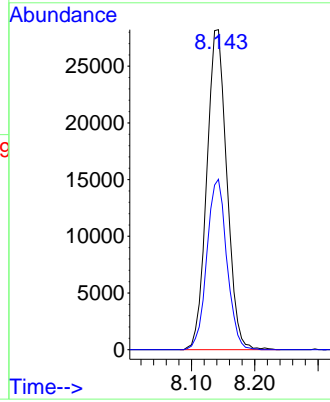


#33
 1,2-Dichloroethane-d4
 Concen: 53.465 ug/l
 RT: 8.143 min Scan# 1037
 Delta R.T. 0.006 min
 Lab File: VY007933.D
 Acq: 19 Mar 2022 04:46

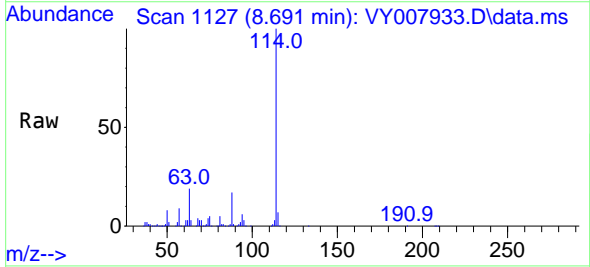
Instrument : MSVOA_Y
 ClientSampleId : C-13-12-13



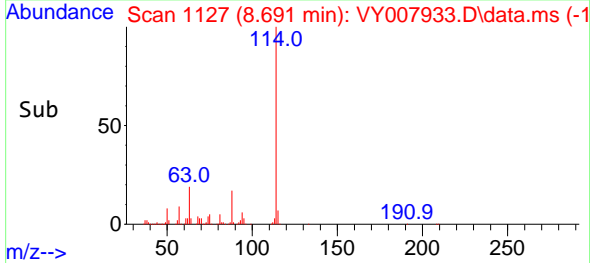
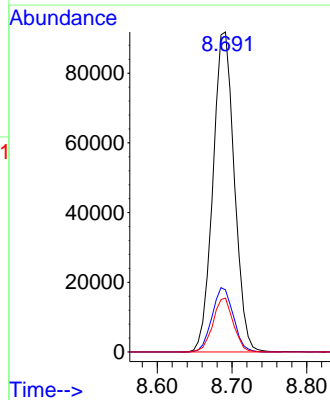
Tgt Ion: 65 Resp: 62218
 Ion Ratio Lower Upper
 65 100
 67 53.0 0.0 99.4

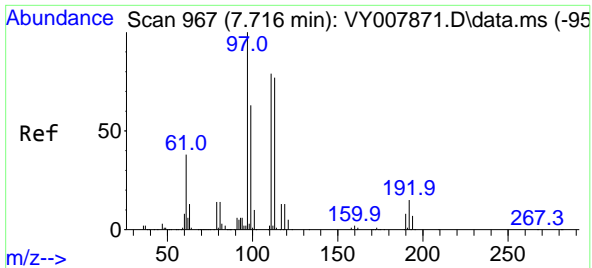


#34
 1,4-Difluorobenzene
 Concen: 50.000 ug/l
 RT: 8.691 min Scan# 1127
 Delta R.T. -0.000 min
 Lab File: VY007933.D
 Acq: 19 Mar 2022 04:46



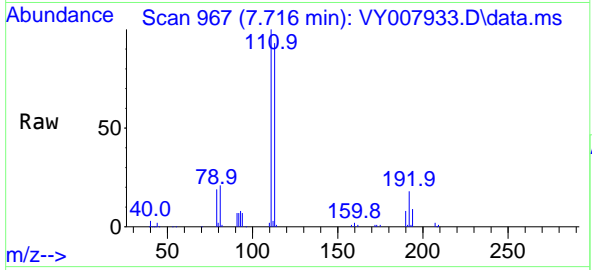
Tgt Ion: 114 Resp: 183208
 Ion Ratio Lower Upper
 114 100
 63 19.4 0.0 43.2
 88 16.9 0.0 31.8



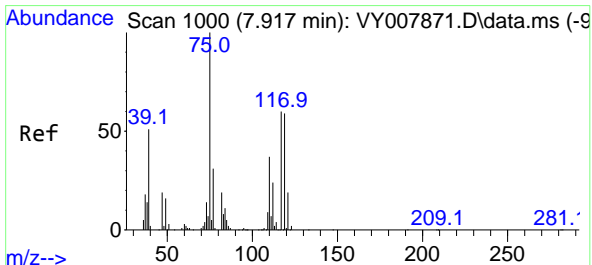
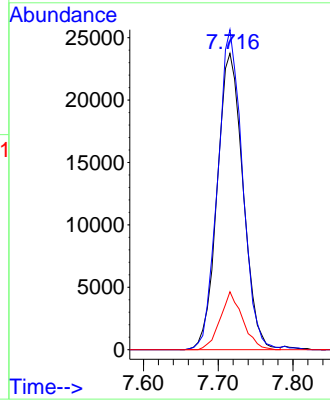
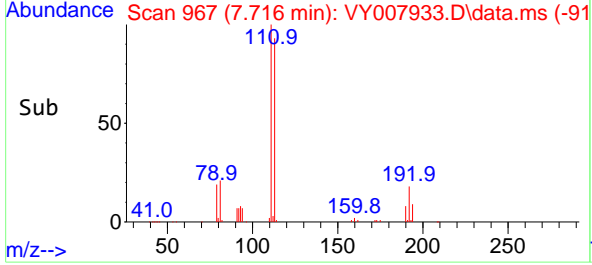


#35
 Dibromofluoromethane
 Concen: 44.361 ug/l
 RT: 7.716 min Scan# 90
 Delta R.T. -0.000 min
 Lab File: VY007933.D
 Acq: 19 Mar 2022 04:46

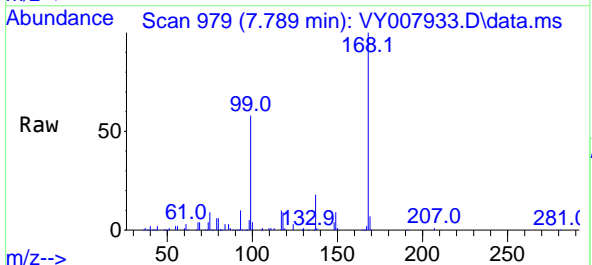
Instrument : MSVOA_Y
 ClientSampleId : C-13-12-13



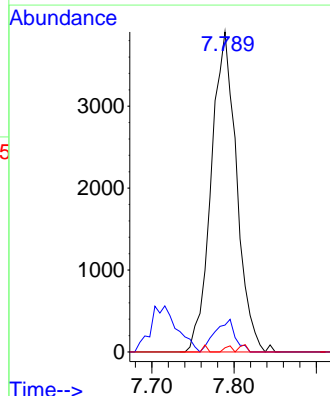
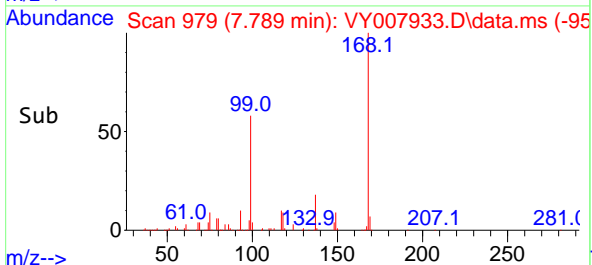
Tgt Ion:113 Resp: 57078
 Ion Ratio Lower Upper
 113 100
 111 103.7 82.6 124.0
 192 17.0 17.6 26.4#

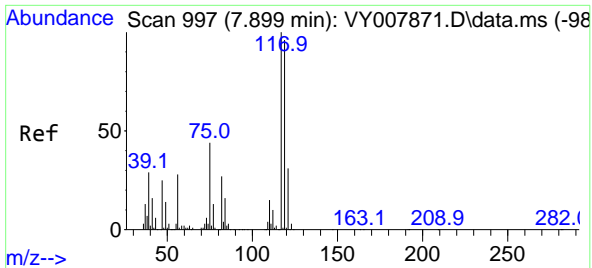


#36
 1,1-Dichloropropene
 Concen: 4.392 ug/l
 RT: 7.789 min Scan# 979
 Delta R.T. -0.128 min
 Lab File: VY007933.D
 Acq: 19 Mar 2022 04:46



Tgt Ion: 75 Resp: 8382
 Ion Ratio Lower Upper
 75 100
 110 8.1 17.1 51.2#
 77 0.0 24.4 36.6#



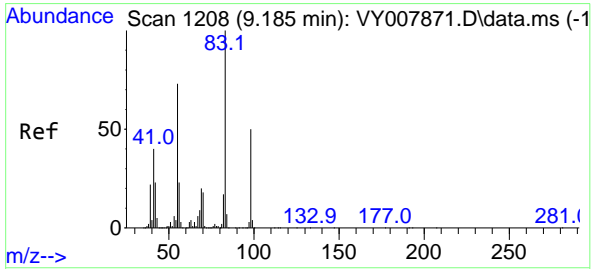
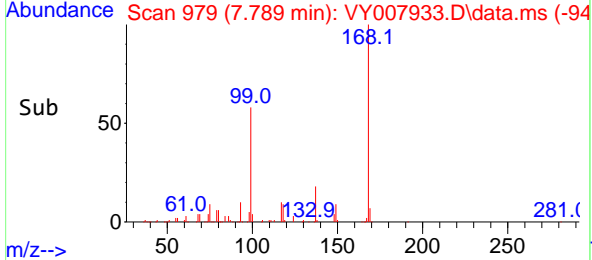
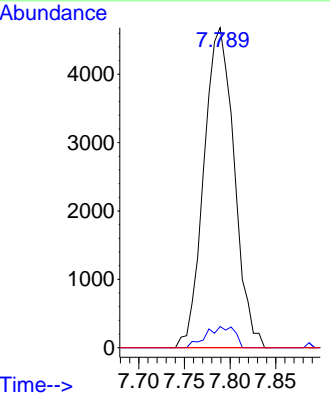
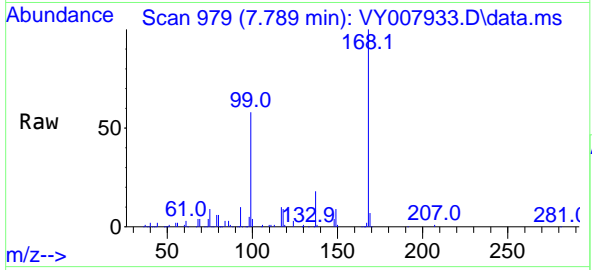


#38
 Carbon Tetrachloride
 Concen: 5.298 ug/l
 RT: 7.789 min Scan# 91
 Delta R.T. -0.110 min
 Lab File: VY007933.D
 Acq: 19 Mar 2022 04:46

Instrument : MSVOA_Y
 ClientSampleId : C-13-12-13

Tgt Ion: 117 Resp: 10803

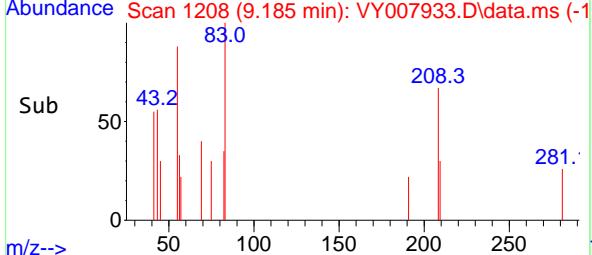
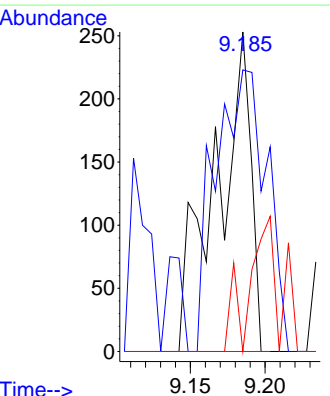
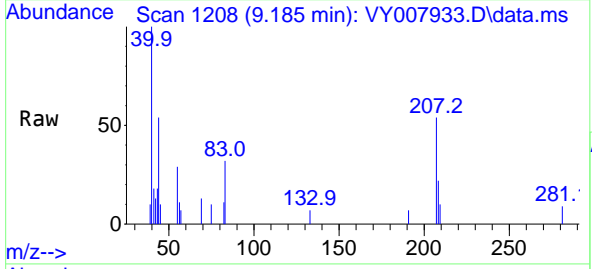
Ion	Ratio	Lower	Upper
117	100		
119	6.6	77.9	116.9#
121	0.0	24.8	37.2#

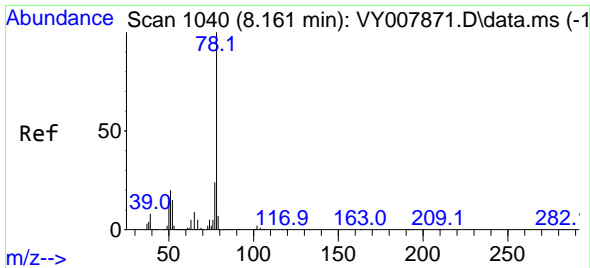


#39
 Methylcyclohexane
 Concen: Below Cal
 RT: 9.185 min Scan# 1208
 Delta R.T. -0.000 min
 Lab File: VY007933.D
 Acq: 19 Mar 2022 04:46

Tgt Ion: 83 Resp: 411

Ion	Ratio	Lower	Upper
83	100		
55	58.5	66.5	99.7#
98	0.0	37.9	56.9#

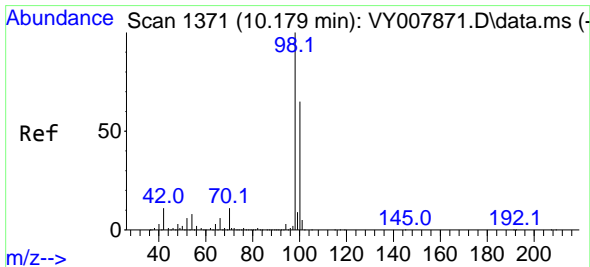
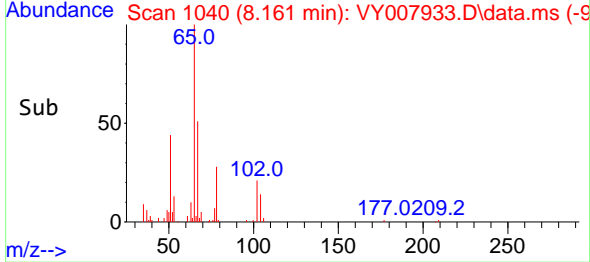
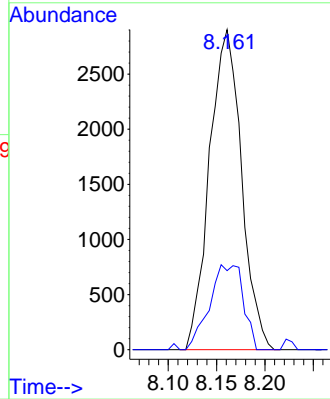
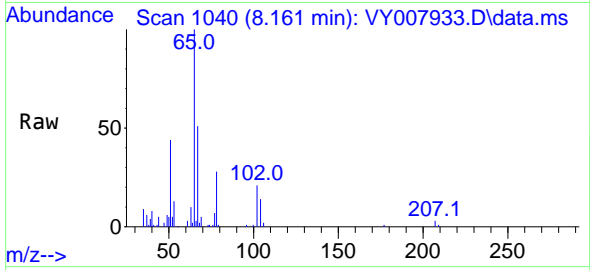




#40
Benzene
Concen: 1.196 ug/l
RT: 8.161 min Scan# 1040
Delta R.T. -0.000 min
Lab File: VY007933.D
Acq: 19 Mar 2022 04:46

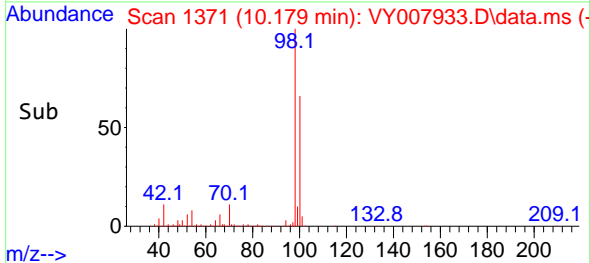
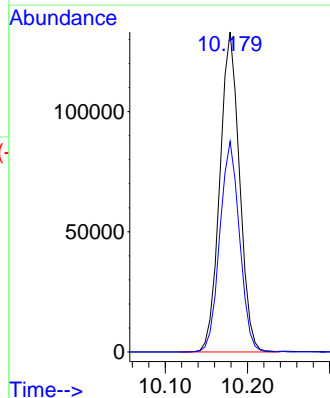
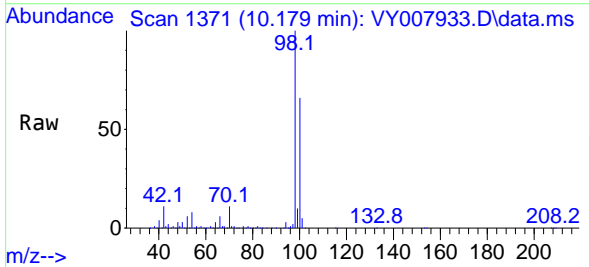
Instrument : MSVOA_Y
ClientSampleId : C-13-12-13

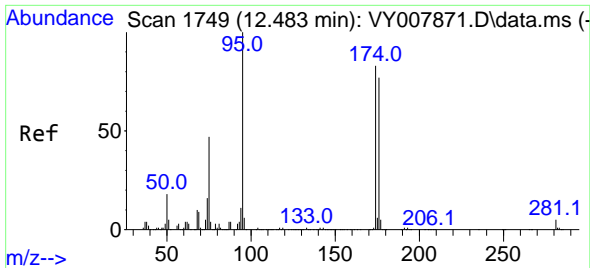
Tgt Ion: 78 Resp: 6671
Ion Ratio Lower Upper
78 100
77 24.7 20.4 30.6



#50
Toluene-d8
Concen: 58.002 ug/l
RT: 10.179 min Scan# 1371
Delta R.T. -0.000 min
Lab File: VY007933.D
Acq: 19 Mar 2022 04:46

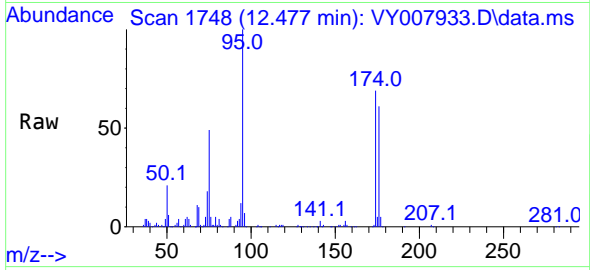
Tgt Ion: 98 Resp: 221685
Ion Ratio Lower Upper
98 100
100 65.8 50.2 75.2



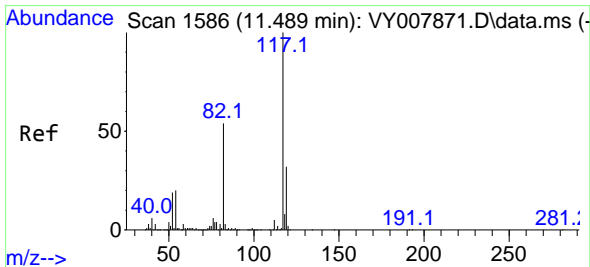
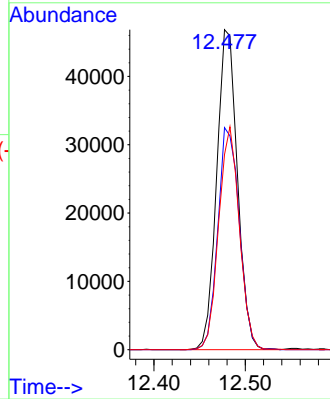
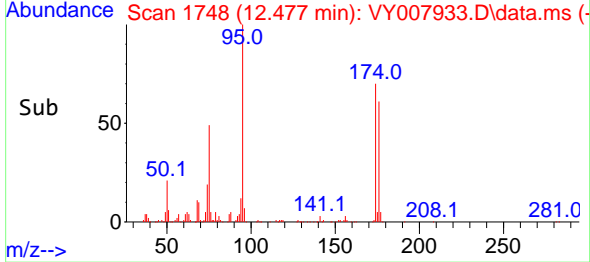


#62
 4-Bromofluorobenzene
 Concen: 40.105 ug/l
 RT: 12.477 min Scan# 11
 Delta R.T. -0.006 min
 Lab File: VY007933.D
 Acq: 19 Mar 2022 04:46

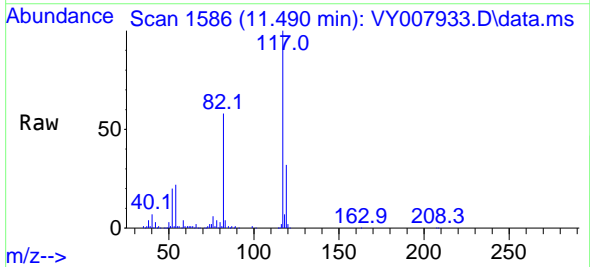
Instrument :
 MSVOA_Y
 ClientSampleId :
 C-13-12-13



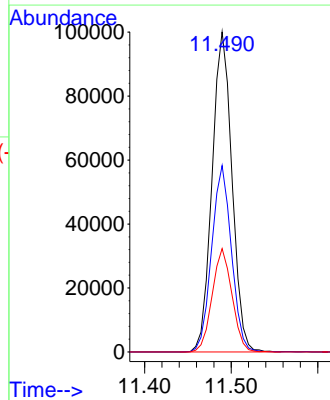
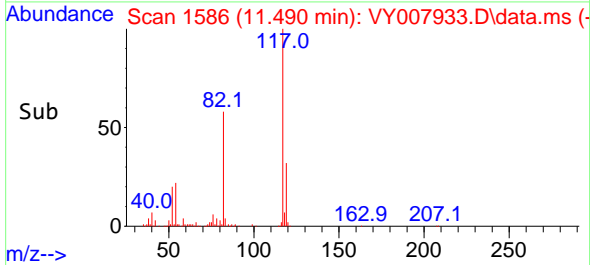
Tgt Ion: 95 Resp: 74057
 Ion Ratio Lower Upper
 95 100
 174 71.9 0.0 177.0
 176 69.4 0.0 175.8

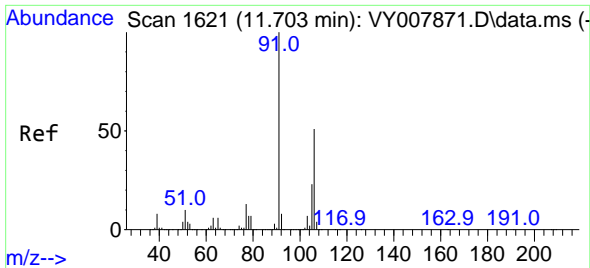


#63
 Chlorobenzene-d5
 Concen: 50.000 ug/l
 RT: 11.490 min Scan# 1586
 Delta R.T. -0.000 min
 Lab File: VY007933.D
 Acq: 19 Mar 2022 04:46



Tgt Ion: 117 Resp: 159765
 Ion Ratio Lower Upper
 117 100
 82 58.3 43.0 64.4
 119 32.3 25.4 38.0

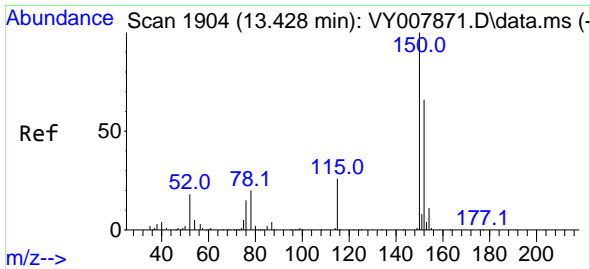
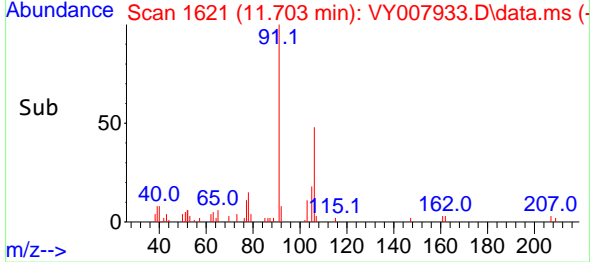
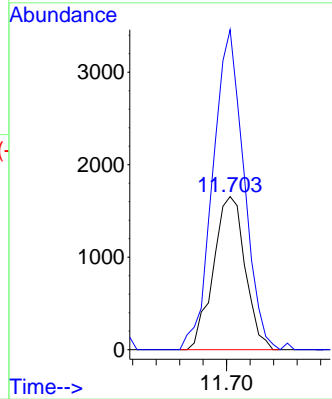
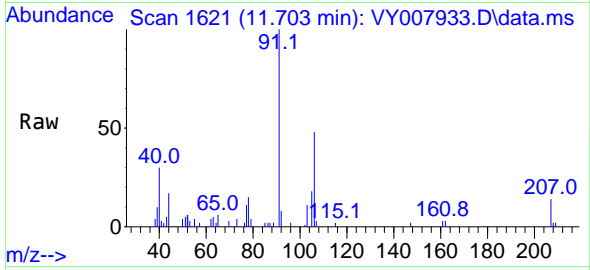




#68
 m/p-Xylenes
 Concen: 1.170 ug/l
 RT: 11.703 min Scan# 10
 Delta R.T. -0.000 min
 Lab File: VY007933.D
 Acq: 19 Mar 2022 04:46

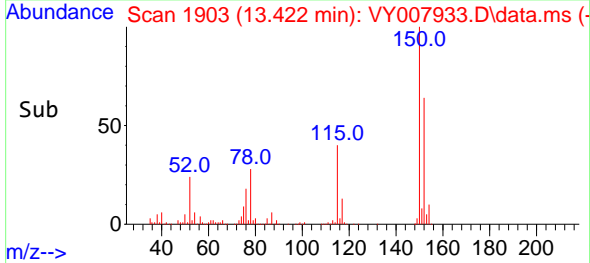
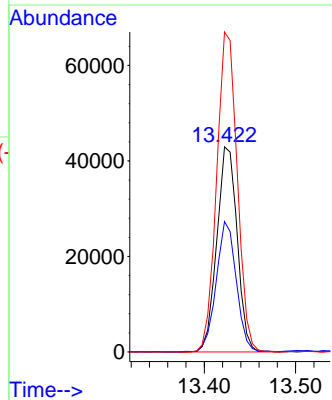
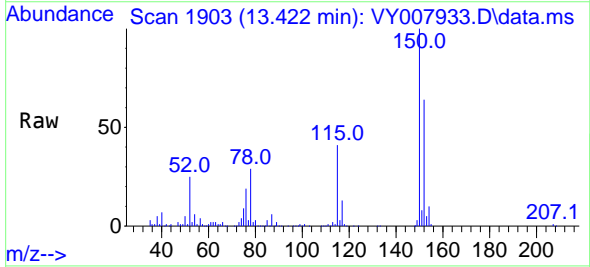
Instrument :
 MSVOA_Y
 ClientSampleId :
 C-13-12-13

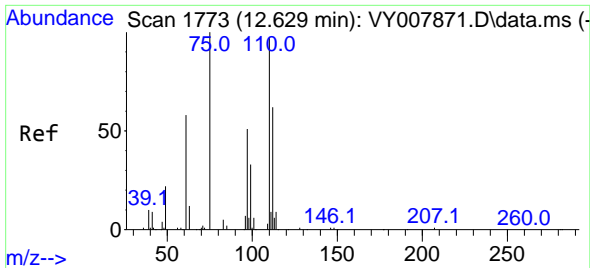
Tgt Ion:106 Resp: 3112
 Ion Ratio Lower Upper
 106 100
 91 203.8 166.6 249.8



#72
 1,4-Dichlorobenzene-d4
 Concen: 50.000 ug/l
 RT: 13.422 min Scan# 1903
 Delta R.T. -0.006 min
 Lab File: VY007933.D
 Acq: 19 Mar 2022 04:46

Tgt Ion:152 Resp: 66561
 Ion Ratio Lower Upper
 152 100
 115 63.0 28.2 84.7
 150 157.4 0.0 347.6

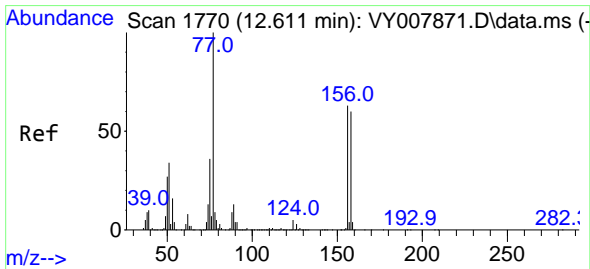
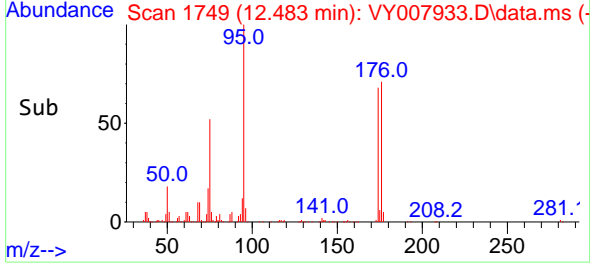
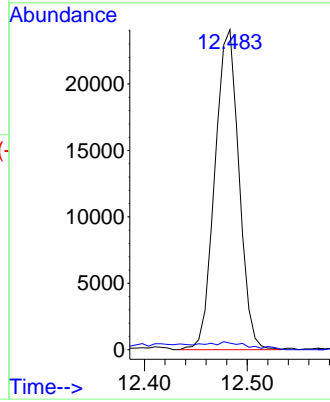
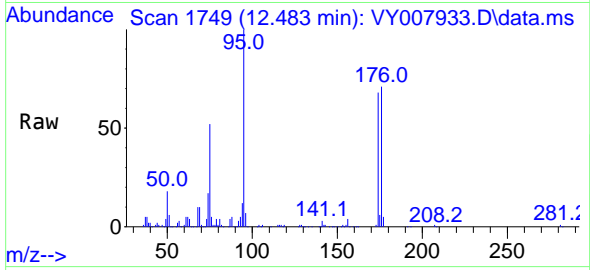




#76
 1,2,3-Trichloropropane
 Concen: 41.318 ug/l
 RT: 12.483 min Scan# 1733
 Delta R.T. -0.152 min
 Lab File: VY007933.D
 Acq: 19 Mar 2022 04:46

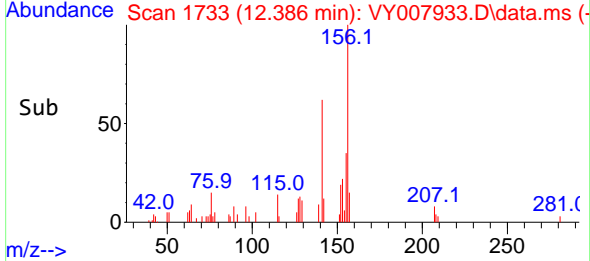
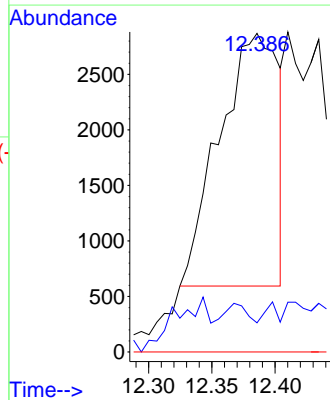
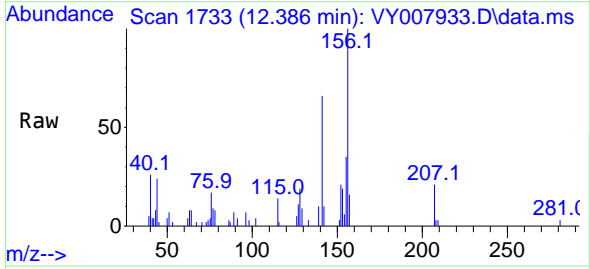
Instrument : MSVOA_Y
 ClientSampleId : C-13-12-13

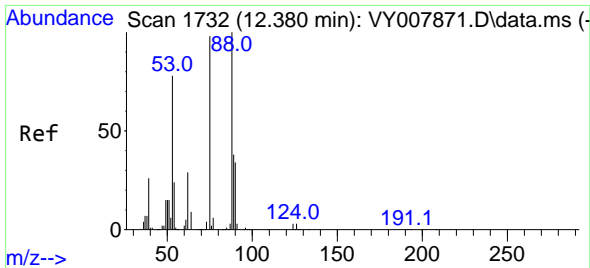
Tgt Ion: 75 Resp: 39199
 Ion Ratio Lower Upper
 75 100
 77 0.0 0.0 0.0



#77
 Bromobenzene
 Concen: 5.469 ug/l
 RT: 12.386 min Scan# 1733
 Delta R.T. -0.226 min
 Lab File: VY007933.D
 Acq: 19 Mar 2022 04:46

Tgt Ion: 156 Resp: 7322
 Ion Ratio Lower Upper
 156 100
 77 1.4 95.5 286.4#
 158 0.0 48.0 144.0#

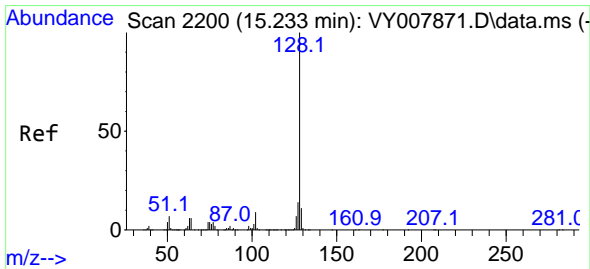
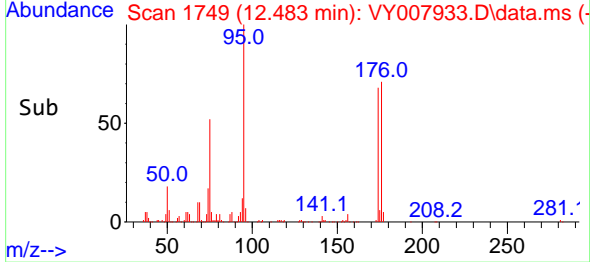
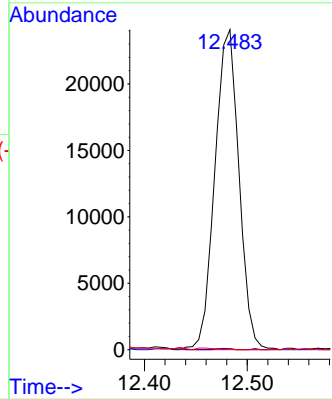
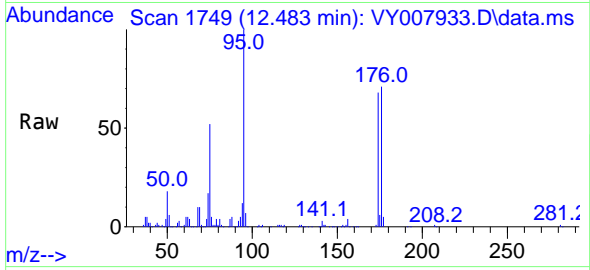




#81
 trans-1,4-Dichloro-2-butene
 Concen: 86.784 ug/l
 RT: 12.483 min Scan# 11
 Delta R.T. 0.104 min
 Lab File: VY007933.D
 Acq: 19 Mar 2022 04:46

Instrument :
 MSVOA_Y
 ClientSampleId :
 C-13-12-13

Tgt Ion: 75 Resp: 39199
 Ion Ratio Lower Upper
 75 100
 53 0.2 85.3 127.9#
 89 0.0 37.0 55.4#



#95
 Naphthalene
 Concen: 89.878 ug/l
 RT: 15.233 min Scan# 2200
 Delta R.T. -0.006 min
 Lab File: VY007933.D
 Acq: 19 Mar 2022 04:46

Tgt Ion:128 Resp: 298137
 Ion Ratio Lower Upper
 128 100
 127 12.8 11.0 16.4
 129 10.8 8.4 12.6

