

Data Path : Z:\voasrv\HPCHEM1\MSVOA_Y\Data\VY031822\
 Data File : VY007930.D
 Acq On : 19 Mar 2022 03:36
 Operator : SY/MD
 Sample : N1958-10
 Misc : 5.07g/5.0mL/MSVOA_Y/SOIL
 ALS Vial : 45 Sample Multiplier: 1

Instrument :
 MSVOA_Y
 ClientSampleId :
 C-10-9-10

Quant Time: Mar 21 03:19:33 2022
 Quant Method : Z:\voasrv\HPCHEM1\MSVOA_Y\methods\82Y031722S.M
 Quant Title : SW846 8260
 QLast Update : Thu Mar 17 13:55:34 2022
 Response via : Initial Calibration

Compound	R.T.	QIon	Response	Conc	Units	Dev(Min)

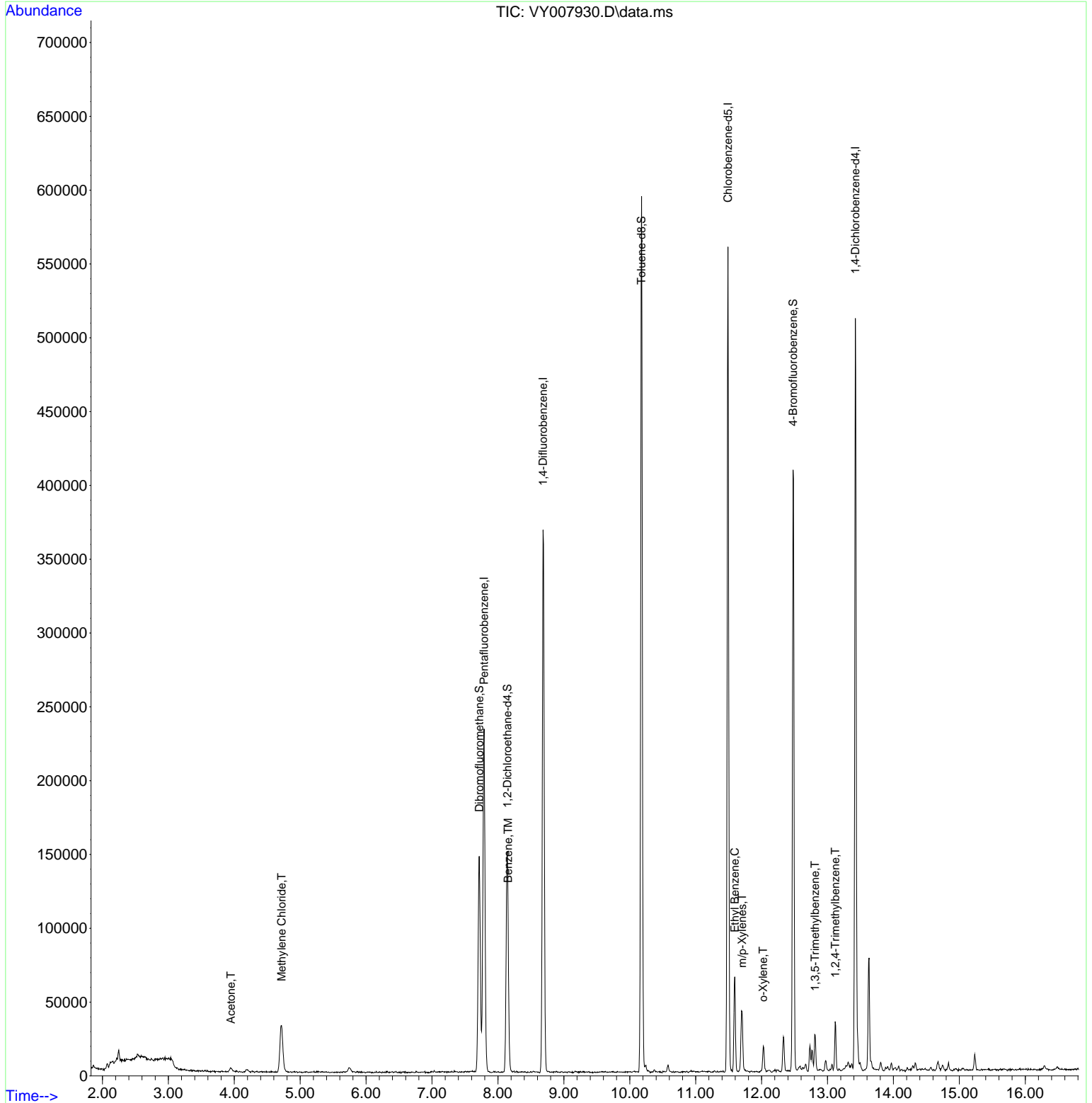
Internal Standards						
1) Pentafluorobenzene	7.789	168	169233	50.000	ug/l	0.00
34) 1,4-Difluorobenzene	8.685	114	318267	50.000	ug/l	0.00
63) Chlorobenzene-d5	11.489	117	293084	50.000	ug/l	0.00
72) 1,4-Dichlorobenzene-d4	13.422	152	123548	50.000	ug/l	0.00
System Monitoring Compounds						
33) 1,2-Dichloroethane-d4	8.142	65	113785	58.969	ug/l	0.00
Spiked Amount	50.000	Range	50 - 163	Recovery	=	117.940%
35) Dibromofluoromethane	7.716	113	104246	46.639	ug/l	0.00
Spiked Amount	50.000	Range	54 - 147	Recovery	=	93.280%
50) Toluene-d8	10.179	98	389295	58.703	ug/l	0.00
Spiked Amount	50.000	Range	49 - 140	Recovery	=	117.400%
62) 4-Bromofluorobenzene	12.477	95	135926	42.372	ug/l	0.00
Spiked Amount	50.000	Range	25 - 144	Recovery	=	84.740%
Target Compounds						
					Qvalue	
16) Acetone	3.948	43	5700	11.135	ug/l #	80
20) Methylene Chloride	4.716	84	24738	8.635	ug/l	87
40) Benzene	8.155	78	10864	1.121	ug/l	98
67) Ethyl Benzene	11.593	91	44638	3.569	ug/l	97
68) m/p-Xylenes	11.703	106	13181	2.702	ug/l	98
69) o-Xylene	12.026	106	4833	1.024	ug/l	89
80) 1,3,5-Trimethylbenzene	12.812	105	11056	1.236	ug/l	97
84) 1,2,4-Trimethylbenzene	13.117	105	16592	1.893	ug/l	99

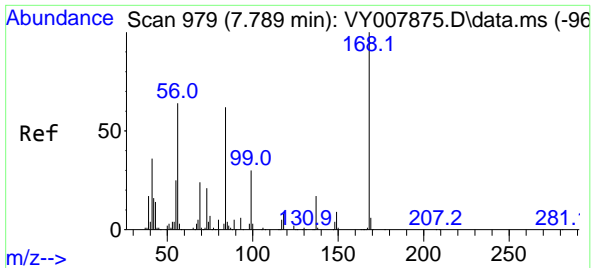
(#) = qualifier out of range (m) = manual integration (+) = signals summed

Data Path : Z:\voasrv\HPCHEM1\MSVOA_Y\Data\VY031822\
 Data File : VY007930.D
 Acq On : 19 Mar 2022 03:36
 Operator : SY/MD
 Sample : N1958-10
 Misc : 5.07g/5.0mL/MSVOA_Y/SOIL
 ALS Vial : 45 Sample Multiplier: 1

Instrument :
 MSVOA_Y
ClientSampleId :
 C-10-9-10

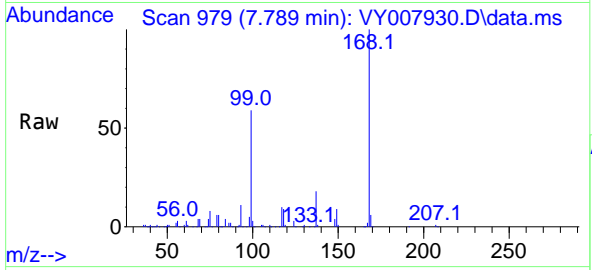
Quant Time: Mar 21 03:19:33 2022
 Quant Method : Z:\voasrv\HPCHEM1\MSVOA_Y\methods\82Y031722S.M
 Quant Title : SW846 8260
 QLast Update : Thu Mar 17 13:55:34 2022
 Response via : Initial Calibration



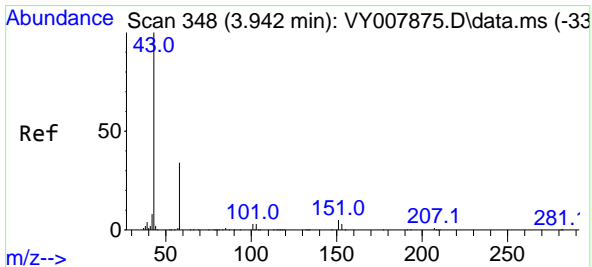
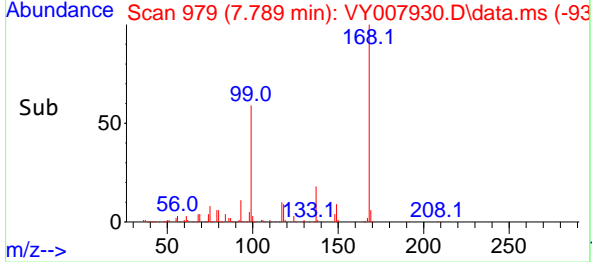
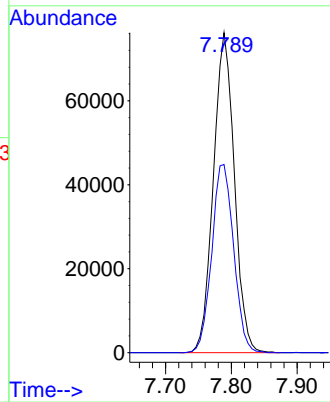


#1
 Pentafluorobenzene
 Concen: 50.000 ug/l
 RT: 7.789 min Scan# 91
 Delta R.T. -0.000 min
 Lab File: VY007930.D
 Acq: 19 Mar 2022 03:36

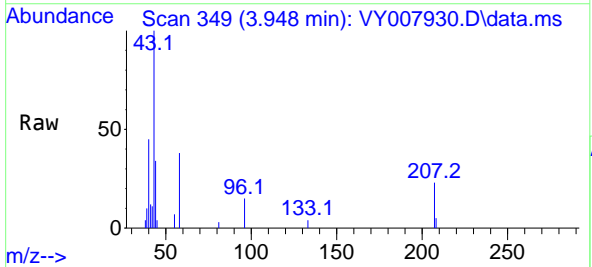
Instrument : MSVOA_Y
 ClientSampleId : C-10-9-10



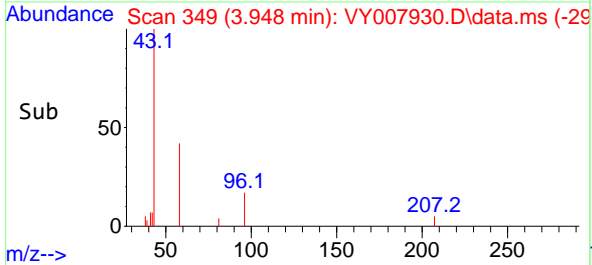
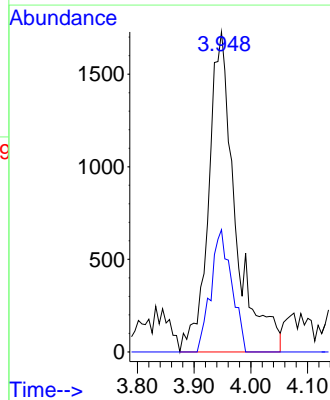
Tgt Ion:168 Resp: 169233
 Ion Ratio Lower Upper
 168 100
 99 58.8 46.9 70.3

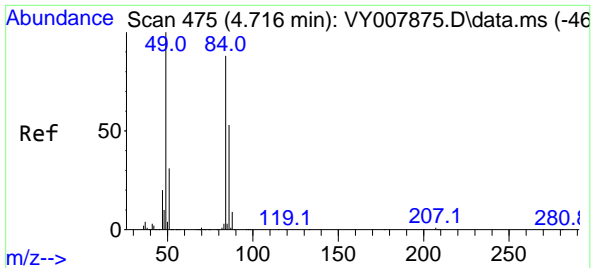


#16
 Acetone
 Concen: 11.135 ug/l
 RT: 3.948 min Scan# 349
 Delta R.T. 0.006 min
 Lab File: VY007930.D
 Acq: 19 Mar 2022 03:36



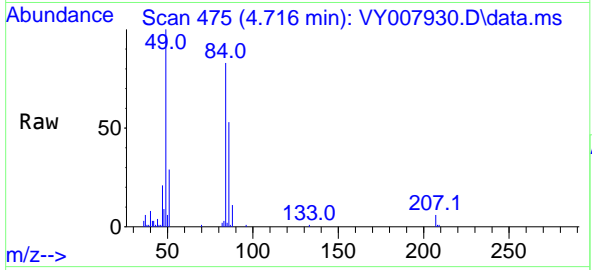
Tgt Ion: 43 Resp: 5700
 Ion Ratio Lower Upper
 43 100
 58 38.2 22.0 33.0#





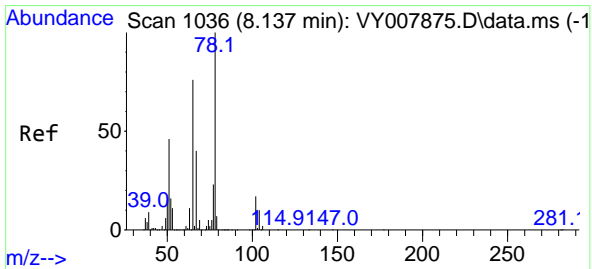
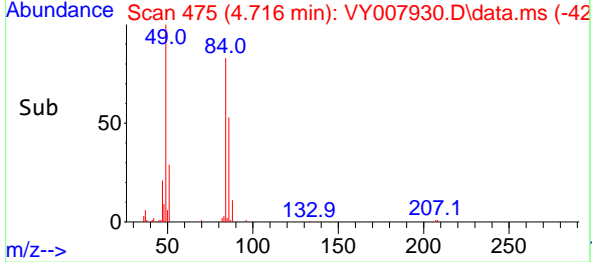
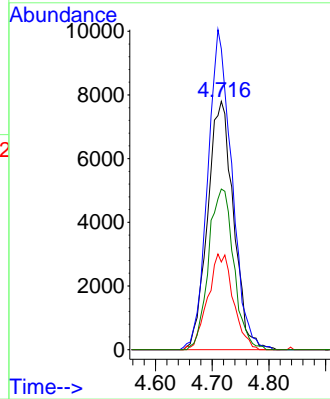
#20
 Methylene Chloride
 Concen: 8.635 ug/l
 RT: 4.716 min Scan# 41
 Delta R.T. -0.000 min
 Lab File: VY007930.D
 Acq: 19 Mar 2022 03:36

Instrument :
 MSVOA_Y
 ClientSampleId :
 C-10-9-10



Tgt Ion: 84 Resp: 24738

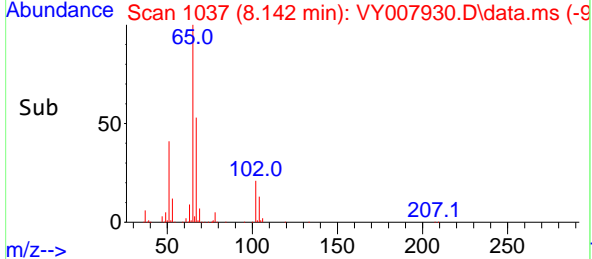
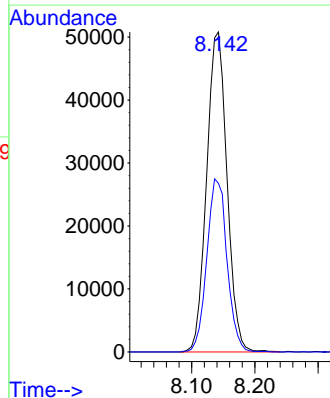
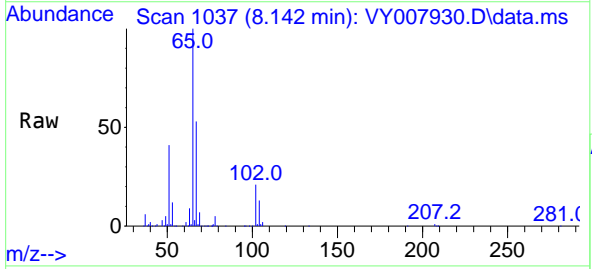
Ion	Ratio	Lower	Upper
84	100		
49	121.2	114.4	171.6
51	35.3	35.3	52.9
86	64.7	53.7	80.5

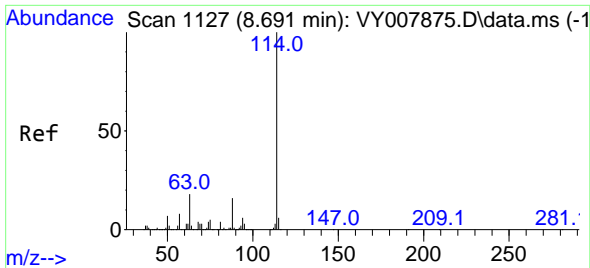


#33
 1,2-Dichloroethane-d4
 Concen: 58.969 ug/l
 RT: 8.142 min Scan# 1037
 Delta R.T. 0.006 min
 Lab File: VY007930.D
 Acq: 19 Mar 2022 03:36

Tgt Ion: 65 Resp: 113785

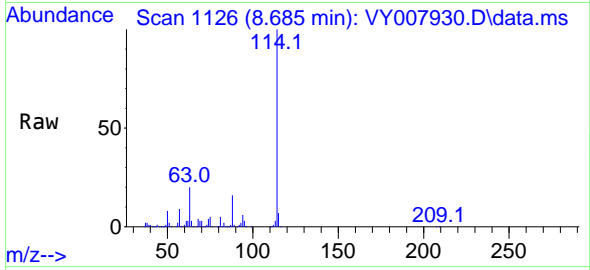
Ion	Ratio	Lower	Upper
65	100		
67	53.6	0.0	99.4





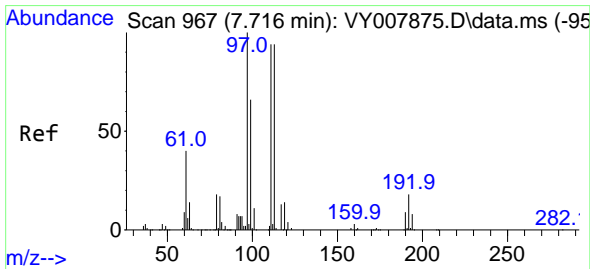
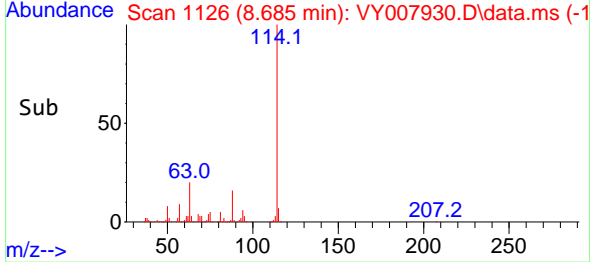
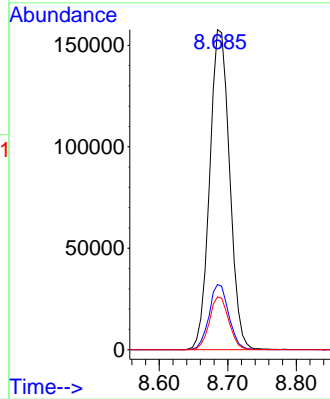
#34
 1,4-Difluorobenzene
 Concen: 50.000 ug/l
 RT: 8.685 min Scan# 1126
 Delta R.T. -0.006 min
 Lab File: VY007930.D
 Acq: 19 Mar 2022 03:36

Instrument : MSVOA_Y
 ClientSampleId : C-10-9-10



Tgt Ion:114 Resp: 318267

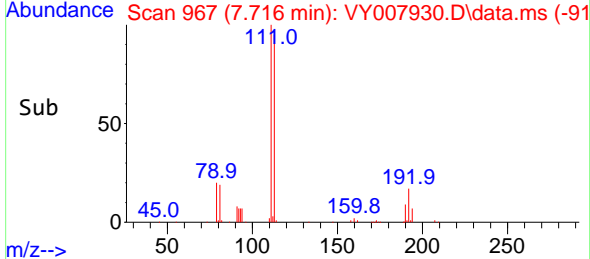
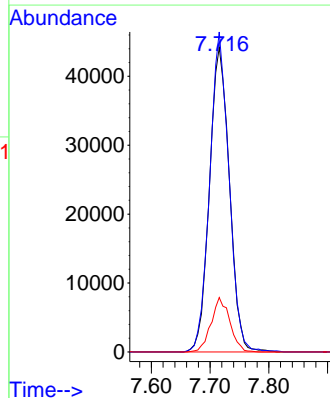
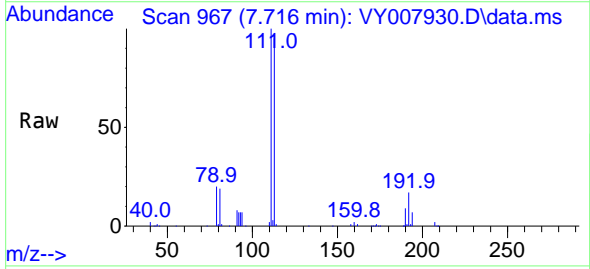
Ion	Ratio	Lower	Upper
114	100		
63	20.3	0.0	43.2
88	16.5	0.0	31.8

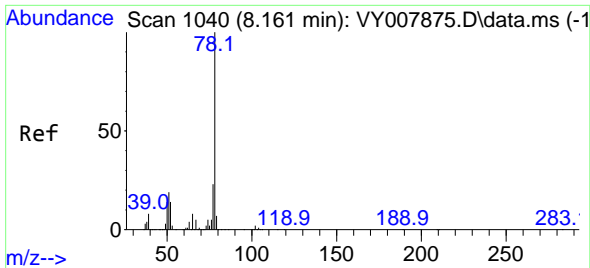


#35
 Dibromofluoromethane
 Concen: 46.639 ug/l
 RT: 7.716 min Scan# 967
 Delta R.T. -0.000 min
 Lab File: VY007930.D
 Acq: 19 Mar 2022 03:36

Tgt Ion:113 Resp: 104246

Ion	Ratio	Lower	Upper
113	100		
111	101.7	82.6	124.0
192	16.8	17.6	26.4#

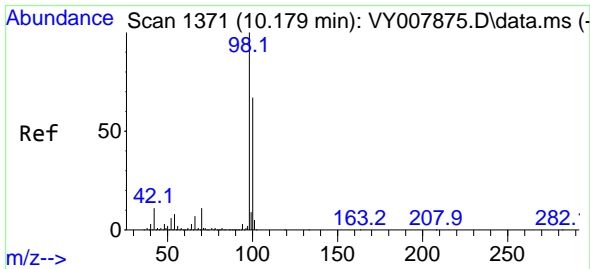
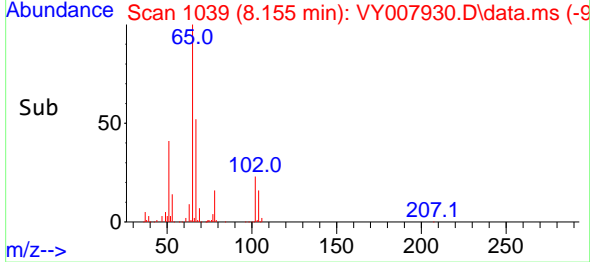
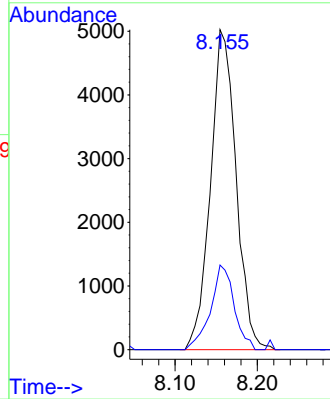
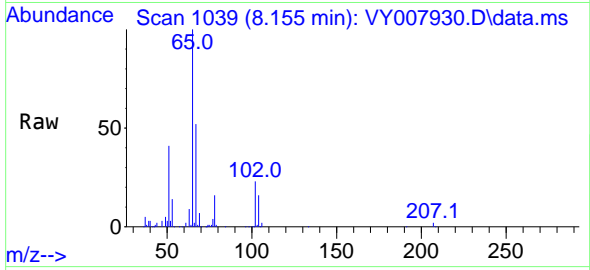




#40
Benzene
Concen: 1.121 ug/l
RT: 8.155 min Scan# 1039
Delta R.T. -0.006 min
Lab File: VY007930.D
Acq: 19 Mar 2022 03:36

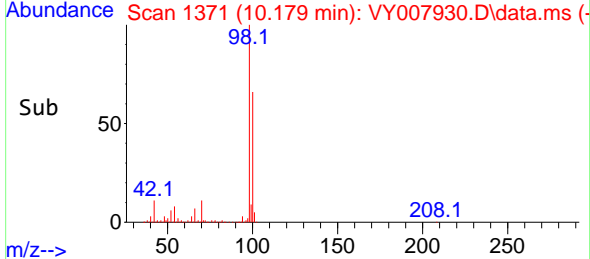
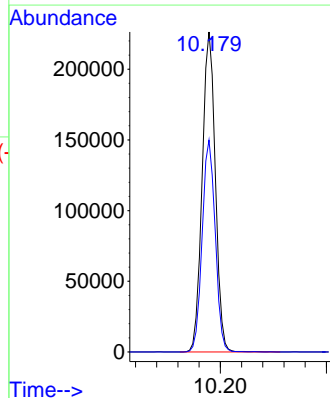
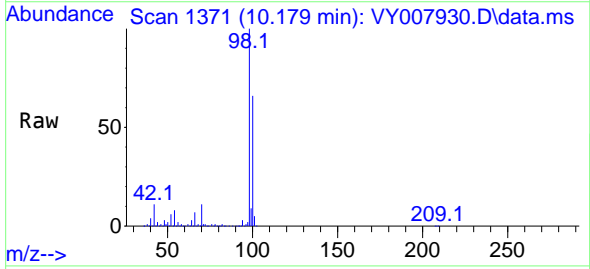
Instrument : MSVOA_Y
ClientSampleId : C-10-9-10

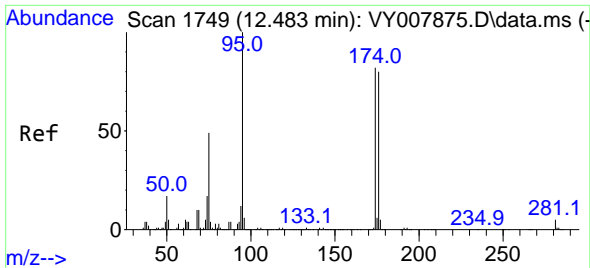
Tgt Ion: 78 Resp: 10864
Ion Ratio Lower Upper
78 100
77 26.4 20.4 30.6



#50
Toluene-d8
Concen: 58.703 ug/l
RT: 10.179 min Scan# 1371
Delta R.T. -0.000 min
Lab File: VY007930.D
Acq: 19 Mar 2022 03:36

Tgt Ion: 98 Resp: 389295
Ion Ratio Lower Upper
98 100
100 65.7 50.2 75.2



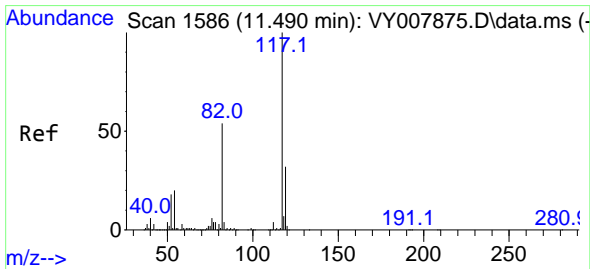
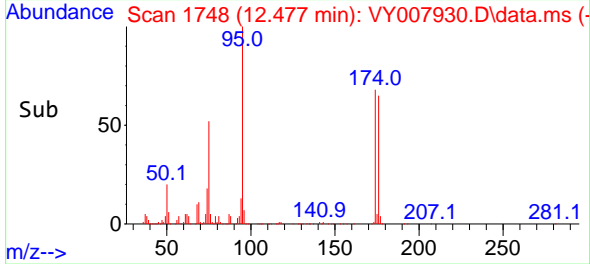
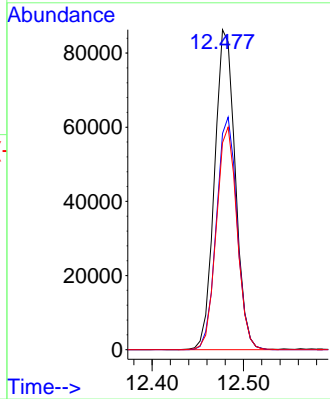
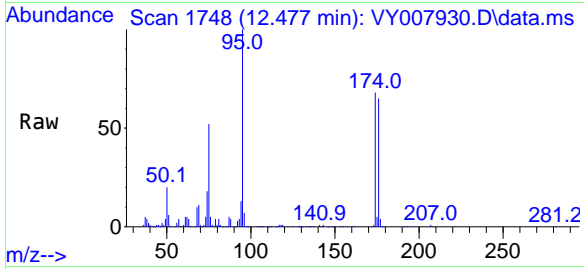


#62
 4-Bromofluorobenzene
 Concen: 42.372 ug/l
 RT: 12.477 min Scan# 11
 Delta R.T. -0.006 min
 Lab File: VY007930.D
 Acq: 19 Mar 2022 03:36

Instrument :
 MSVOA_Y
 ClientSampleId :
 C-10-9-10

Tgt Ion: 95 Resp: 135926

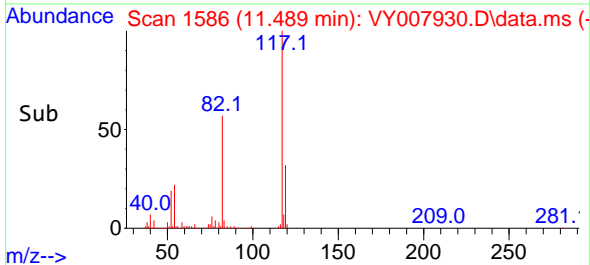
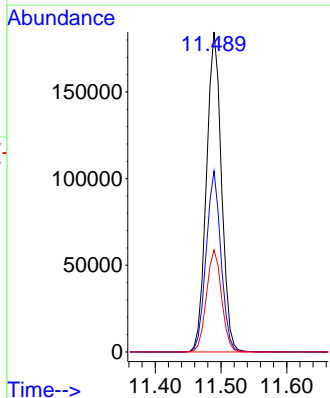
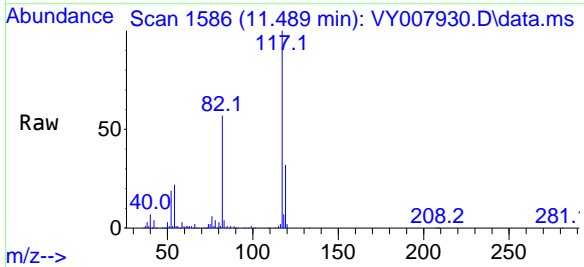
Ion	Ratio	Lower	Upper
95	100		
174	72.3	0.0	177.0
176	69.4	0.0	175.8

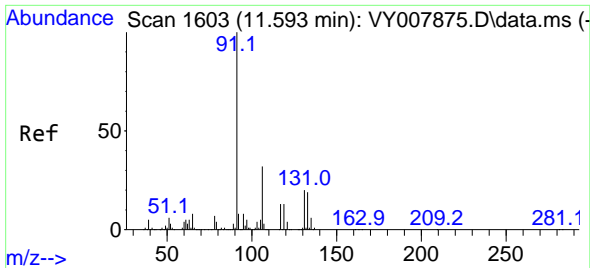


#63
 Chlorobenzene-d5
 Concen: 50.000 ug/l
 RT: 11.489 min Scan# 1586
 Delta R.T. -0.000 min
 Lab File: VY007930.D
 Acq: 19 Mar 2022 03:36

Tgt Ion: 117 Resp: 293084

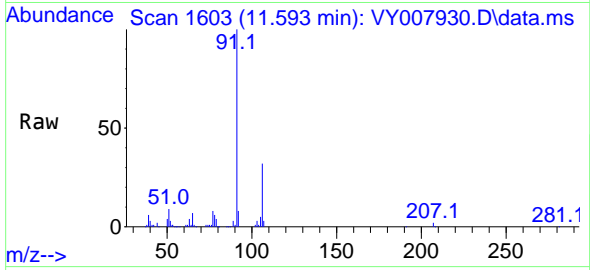
Ion	Ratio	Lower	Upper
117	100		
82	56.6	43.0	64.4
119	31.9	25.4	38.0



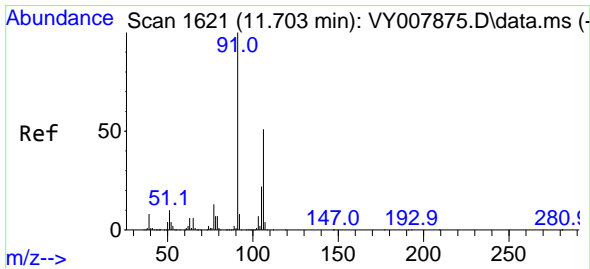
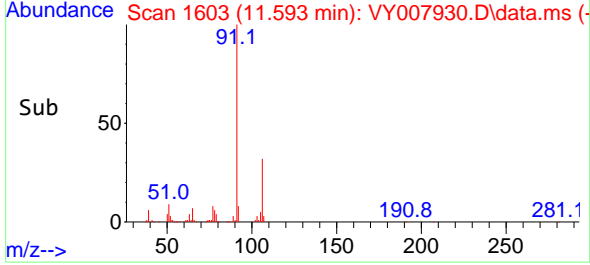
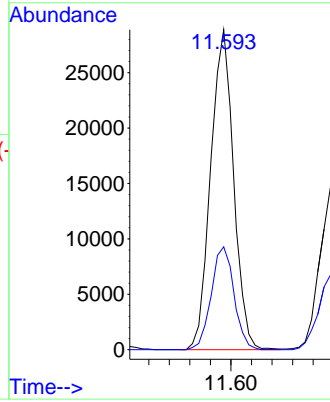


#67
 Ethyl Benzene
 Concen: 3.569 ug/l
 RT: 11.593 min Scan# 1603
 Delta R.T. -0.000 min
 Lab File: VY007930.D
 Acq: 19 Mar 2022 03:36

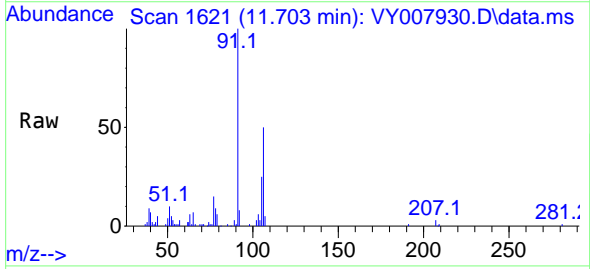
Instrument : MSVOA_Y
 ClientSampleId : C-10-9-10



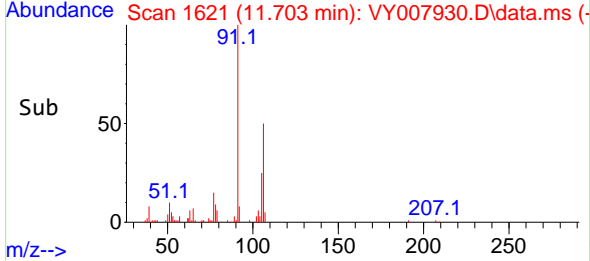
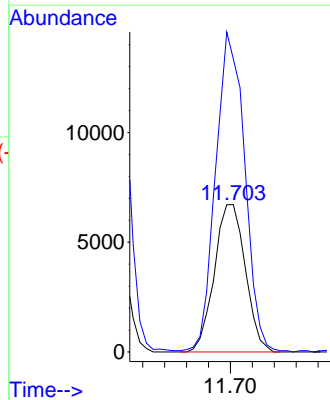
Tgt Ion: 91 Resp: 44638
 Ion Ratio Lower Upper
 91 100
 106 32.1 24.5 36.7

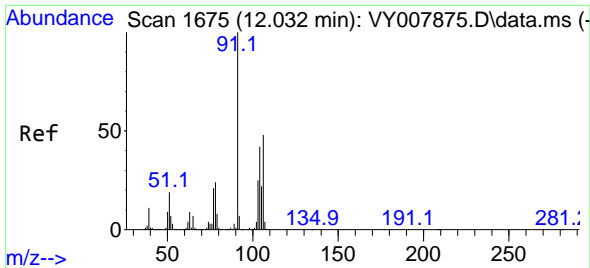


#68
 m/p-Xylenes
 Concen: 2.702 ug/l
 RT: 11.703 min Scan# 1621
 Delta R.T. -0.000 min
 Lab File: VY007930.D
 Acq: 19 Mar 2022 03:36



Tgt Ion: 106 Resp: 13181
 Ion Ratio Lower Upper
 106 100
 91 204.7 166.6 249.8

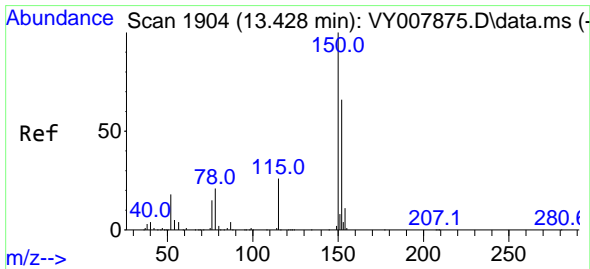
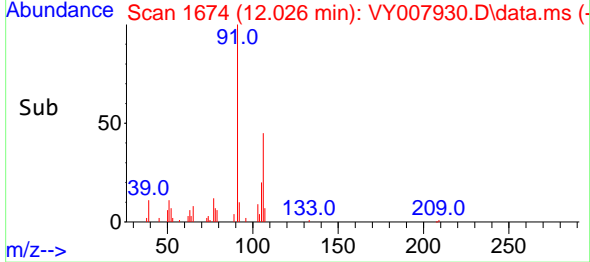
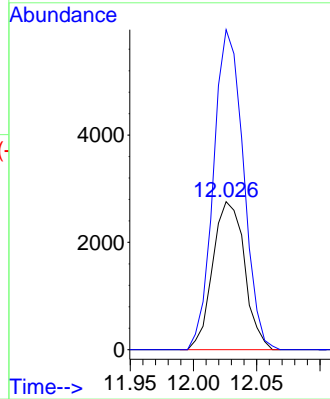
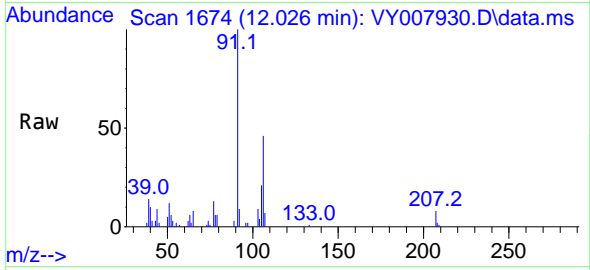




#69
 o-Xylene
 Concen: 1.024 ug/l
 RT: 12.026 min Scan# 11
 Delta R.T. -0.006 min
 Lab File: VY007930.D
 Acq: 19 Mar 2022 03:36

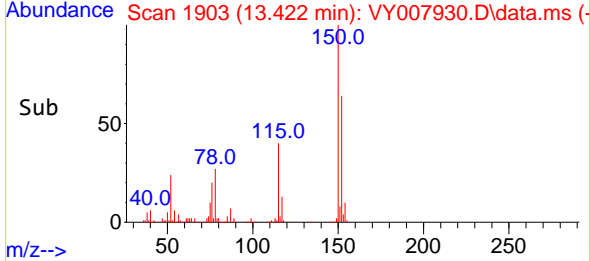
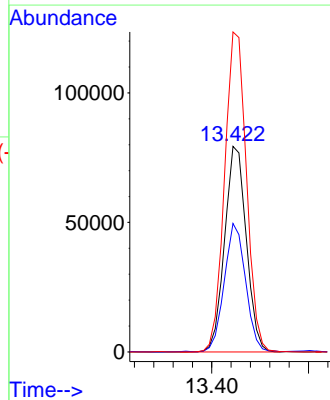
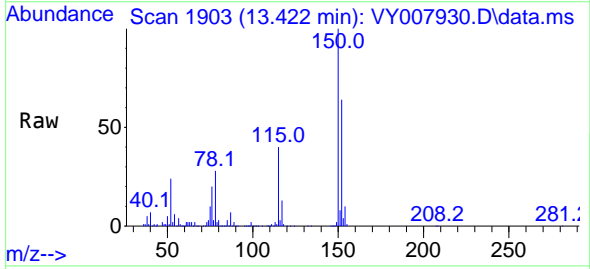
Instrument :
 MSVOA_Y
 ClientSampleId :
 C-10-9-10

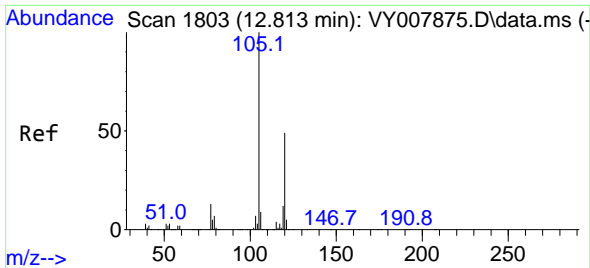
Tgt Ion:106 Resp: 4833
 Ion Ratio Lower Upper
 106 100
 91 203.0 110.3 331.0



#72
 1,4-Dichlorobenzene-d4
 Concen: 50.000 ug/l
 RT: 13.422 min Scan# 1903
 Delta R.T. -0.006 min
 Lab File: VY007930.D
 Acq: 19 Mar 2022 03:36

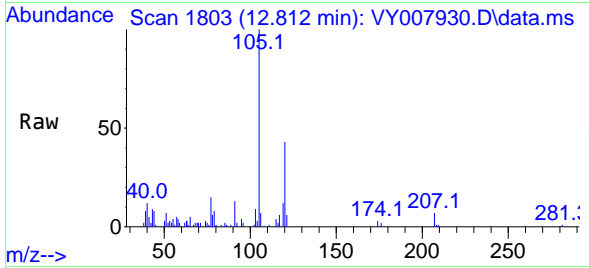
Tgt Ion:152 Resp: 123548
 Ion Ratio Lower Upper
 152 100
 115 61.3 28.2 84.7
 150 156.6 0.0 347.6



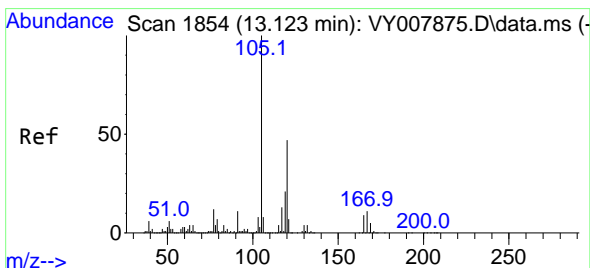
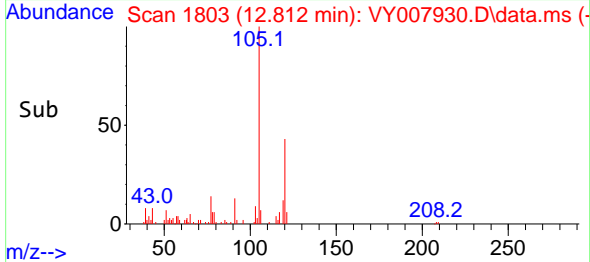
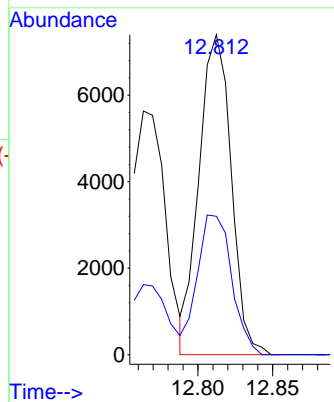


#80
 1,3,5-Trimethylbenzene
 Concen: 1.236 ug/l
 RT: 12.812 min Scan# 1803
 Delta R.T. -0.000 min
 Lab File: VY007930.D
 Acq: 19 Mar 2022 03:36

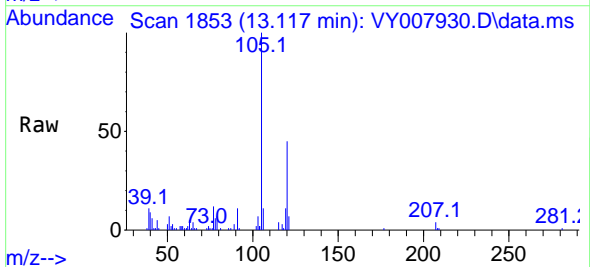
Instrument : MSVOA_Y
 ClientSampleId : C-10-9-10



Tgt Ion:105 Resp: 11056
 Ion Ratio Lower Upper
 105 100
 120 46.6 24.4 73.4



#84
 1,2,4-Trimethylbenzene
 Concen: 1.893 ug/l
 RT: 13.117 min Scan# 1853
 Delta R.T. -0.006 min
 Lab File: VY007930.D
 Acq: 19 Mar 2022 03:36



Tgt Ion:105 Resp: 16592
 Ion Ratio Lower Upper
 105 100
 120 45.1 22.3 66.9

