

Data Path : Z:\VOASRV\HPCHEM1\MSVOA_Y\DATA\VY032020\
 Data File : VY002034.D
 Acq On : 20 Mar 2020 12:09
 Operator : SY/MD
 Sample : VY0320SBSD01
 Misc : 5.00G/5ML/MSVOA_Y/SOIL
 ALS Vial : 5 Sample Multiplier: 1

Instrument :
 MSVOA_Y
 ClientSampleId :
 VY0320SBSD01

Quant Time: Mar 20 16:13:17 2020
 Quant Method : Z:\VOASRV\HPCHEM1\MSVOA_Y\METHODS\82Y030420S.M
 Quant Title : SW846 8260
 QLast Update : Thu Mar 05 04:05:33 2020
 Response via : Initial Calibration

Internal Standards	R.T.	QIon	Response	Conc	Units	Dev(Min)
1) Pentafluorobenzene	7.81	168	156063	50.00	ug/l	0.00
34) 1,4-Difluorobenzene	8.71	114	283509	50.00	ug/l	0.00
63) Chlorobenzene-d5	11.50	117	252584	50.00	ug/l	0.00
72) 1,4-Dichlorobenzene-d4	13.44	152	119836	50.00	ug/l	0.00

System Monitoring Compounds

33) 1,2-Dichloroethane-d4	8.16	65	88029	52.84	ug/l	0.00
Spiked Amount	50.000		Recovery	=	105.68%	
35) Dibromofluoromethane	7.74	113	83081	53.67	ug/l	0.00
Spiked Amount	50.000		Recovery	=	107.34%	
50) Toluene-d8	10.19	98	335161	51.34	ug/l	0.00
Spiked Amount	50.000		Recovery	=	102.68%	
62) 4-Bromofluorobenzene	12.49	95	118997	52.42	ug/l	0.00
Spiked Amount	50.000		Recovery	=	104.84%	

Target Compounds

	R.T.	QIon	Response	Conc	Units	Qvalue
2) Dichlorodifluoromethane	1.91	85	27480	19.08	ug/l	94
3) Chloromethane	2.12	50	37771	19.45	ug/l	99
4) Vinyl Chloride	2.26	62	39001	19.74	ug/l	96
5) Bromomethane	2.66	94	25725	18.62	ug/l	97
6) Chloroethane	2.80	64	25370	20.44	ug/l	98
7) Trichlorofluoromethane	3.14	101	55537	20.73	ug/l	91
8) Diethyl Ether	3.55	74	22874	21.66	ug/l	98
9) 1,1,2-Trichlorotrifluoroet	3.92	101	36279	21.05	ug/l	99
10) Methyl Iodide	4.11	142	38895	19.52	ug/l	97
11) Tert butyl alcohol	4.97	59	30272	167.11	ug/l #	94
12) 1,1-Dichloroethene	3.90	96	36186	20.85	ug/l	92
13) Acrolein	3.75	56	17866	76.31	ug/l	99
14) Allyl chloride	4.51	41	66474	21.61	ug/l	99
15) Acrylonitrile	5.19	53	59691	105.78	ug/l	99
16) Acetone	3.97	43	51730	106.60	ug/l	100
17) Carbon Disulfide	4.21	76	108137	18.54	ug/l	97
18) Methyl Acetate	4.50	43	27722	22.23	ug/l	97
19) Methyl tert-butyl Ether	5.25	73	102644	21.83	ug/l	97
20) Methylene Chloride	4.74	84	47623	22.90	ug/l	99
21) trans-1,2-Dichloroethene	5.25	96	40848	20.74	ug/l	97
22) Diisopropyl ether	6.15	45	140651	22.31	ug/l	94
23) Vinyl Acetate	6.09	43	448754	108.56	ug/l	99
24) 1,1-Dichloroethane	6.05	63	73776	21.61	ug/l	98
25) 2-Butanone	7.01	43	80726	109.39	ug/l	100
26) 2,2-Dichloropropane	7.00	77	61746	22.03	ug/l	100
27) cis-1,2-Dichloroethene	7.01	96	46852	21.87	ug/l	99
28) Bromochloromethane	7.35	49	34035	22.11	ug/l	97
29) Tetrahydrofuran	7.37	42	51725	105.55	ug/l	99
30) Chloroform	7.53	83	70649	22.02	ug/l	100
31) Cyclohexane	7.80	56	74143	20.25	ug/l	98
32) 1,1,1-Trichloroethane	7.72	97	59453	21.99	ug/l	98
36) 1,1-Dichloropropene	7.94	75	57969	21.25	ug/l	98
37) Ethyl Acetate	7.10	43	35546	22.42	ug/l	98
38) Carbon Tetrachloride	7.92	117	49073	21.06	ug/l	98

Data Path : Z:\VOASRV\HPCHEM1\MSVOA_Y\DATA\VY032020\
 Data File : VY002034.D
 Acq On : 20 Mar 2020 12:09
 Operator : SY/MD
 Sample : VY0320SBSD01
 Misc : 5.00G/5ML/MSVOA_Y/SOIL
 ALS Vial : 5 Sample Multiplier: 1

Instrument :
 MSVOA_Y
 ClientSampleId :
 VY0320SBSD01

Quant Time: Mar 20 16:13:17 2020
 Quant Method : Z:\VOASRV\HPCHEM1\MSVOA_Y\METHODS\82Y030420S.M
 Quant Title : SW846 8260
 QLast Update : Thu Mar 05 04:05:33 2020
 Response via : Initial Calibration

Internal Standards	R.T.	QIon	Response	Conc	Units	Dev(Min)
39) Methylcyclohexane	9.19	83	73352	20.27	ug/l	97
40) Benzene	8.18	78	170400	21.07	ug/l	99
41) Methacrylonitrile	7.36	41	45872	64.28	ug/l #	1
42) 1,2-Dichloroethane	8.25	62	46539	22.33	ug/l	99
43) Isopropyl Acetate	8.29	43	66724	22.23	ug/l	97
44) Trichloroethene	8.96	130	41706	21.18	ug/l	100
45) 1,2-Dichloropropane	9.24	63	44577	21.93	ug/l	99
46) Dibromomethane	9.32	93	22322	21.31	ug/l	98
47) Bromodichloromethane	9.51	83	53092	21.79	ug/l	99
48) Methyl methacrylate	9.31	41	28867	21.67	ug/l	96
49) 1,4-Dioxane	9.32	88	6054	421.76	ug/l	98
51) 4-Methyl-2-Pentanone	10.08	43	179115	115.84	ug/l	99
52) Toluene	10.25	92	104556	21.28	ug/l	99
53) t-1,3-Dichloropropene	10.47	75	58157	21.91	ug/l	95
54) cis-1,3-Dichloropropene	9.94	75	68945	21.81	ug/l	99
55) 1,1,2-Trichloroethane	10.66	97	32593	21.26	ug/l	98
56) Ethyl methacrylate	10.52	69	48746	21.69	ug/l	93
57) 1,3-Dichloropropane	10.80	76	58565	21.43	ug/l	99
58) 2-Chloroethyl Vinyl ether	9.80	63	126228	147.51	ug/l	99
59) 2-Hexanone	10.85	43	118477	107.35	ug/l	99
60) Dibromochloromethane	11.00	129	35093	21.72	ug/l	99
61) 1,2-Dibromoethane	11.10	107	31018	21.36	ug/l	98
64) Tetrachloroethene	10.73	164	34682	21.90	ug/l	88
65) Chlorobenzene	11.52	112	106690	21.20	ug/l	100
66) 1,1,1,2-Tetrachloroethane	11.60	131	36005	21.82	ug/l	98
67) Ethyl Benzene	11.60	91	202541	21.58	ug/l	96
68) m/p-Xylenes	11.71	106	150654	43.41	ug/l	99
69) o-Xylene	12.03	106	71394	21.83	ug/l	100
70) Styrene	12.05	104	121864	21.75	ug/l	99
71) Bromoform	12.22	173	19274	21.53	ug/l #	99
73) Isopropylbenzene	12.34	105	191011	20.88	ug/l	100
74) N-amyl acetate	12.15	43	59053	21.00	ug/l	99
75) 1,1,2,2-Tetrachloroethane	12.59	83	41120	20.84	ug/l	99
76) 1,2,3-Trichloropropane	12.64	75	53408	37.56	ug/l #	100
77) Bromobenzene	12.62	156	41049	21.18	ug/l	99
78) n-propylbenzene	12.68	91	236663	20.97	ug/l	99
79) 2-Chlorotoluene	12.77	91	132090	21.18	ug/l	100
80) 1,3,5-Trimethylbenzene	12.82	105	161480	21.44	ug/l	99
81) trans-1,4-Dichloro-2-buten	12.39	75	14224	20.21	ug/l	95
82) 4-Chlorotoluene	12.86	91	139973	21.56	ug/l	99
83) tert-Butylbenzene	13.08	119	134420	21.49	ug/l	98
84) 1,2,4-Trimethylbenzene	13.13	105	160228	21.44	ug/l	100
85) sec-Butylbenzene	13.26	105	198274	21.51	ug/l	99
86) p-Isopropyltoluene	13.38	119	173877	21.86	ug/l	100
87) 1,3-Dichlorobenzene	13.38	146	81492	21.46	ug/l	99
88) 1,4-Dichlorobenzene	13.45	146	81675	21.20	ug/l	99
89) n-Butylbenzene	13.70	91	177200	21.47	ug/l	99
90) Hexachloroethane	13.97	117	32235	21.48	ug/l	99
91) 1,2-Dichlorobenzene	13.75	146	74095	21.47	ug/l	98
92) 1,2-Dibromo-3-Chloropropan	14.37	75	6450	20.95	ug/l	94

Data Path : Z:\VOASRV\HPCHEM1\MSVOA_Y\DATA\VY032020\
 Data File : VY002034.D
 Acq On : 20 Mar 2020 12:09
 Operator : SY/MD
 Sample : VY0320SBSD01
 Misc : 5.00G/5ML/MSVOA_Y/SOIL
 ALS Vial : 5 Sample Multiplier: 1

Instrument :
 MSVOA_Y
 ClientSampleId :
 VY0320SBSD01

Quant Time: Mar 20 16:13:17 2020
 Quant Method : Z:\VOASRV\HPCHEM1\MSVOA_Y\METHODS\82Y030420S.M
 Quant Title : SW846 8260
 QLast Update : Thu Mar 05 04:05:33 2020
 Response via : Initial Calibration

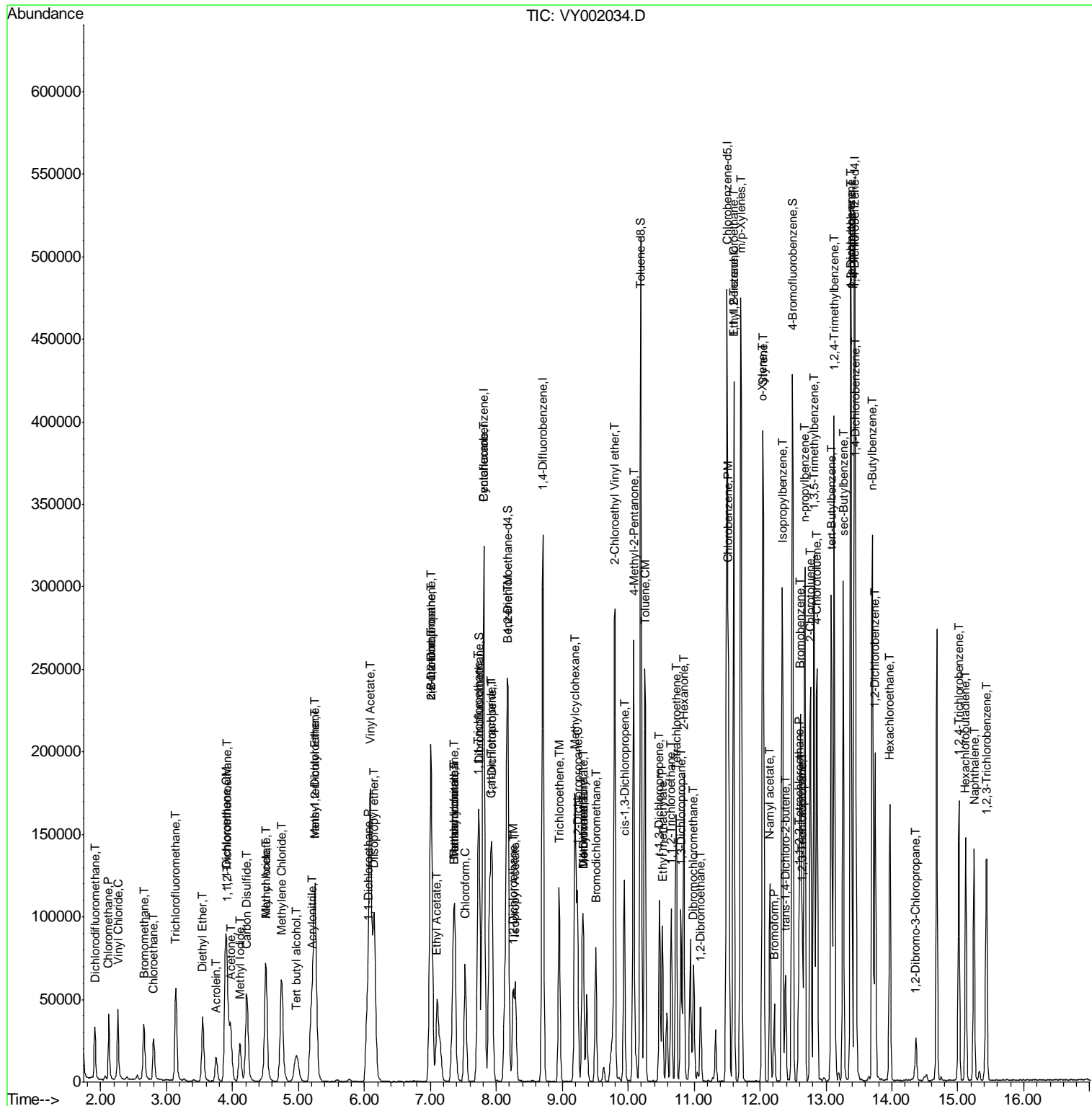
Internal Standards	R.T.	QIon	Response	Conc	Units	Dev(Min)
93) 1,2,4-Trichlorobenzene	15.02	180	48952	21.88	ug/l	99
94) Hexachlorobutadiene	15.12	225	23813	21.83	ug/l	99
95) Naphthalene	15.25	128	110529	20.82	ug/l	100
96) 1,2,3-Trichlorobenzene	15.44	180	42760	21.69	ug/l	98

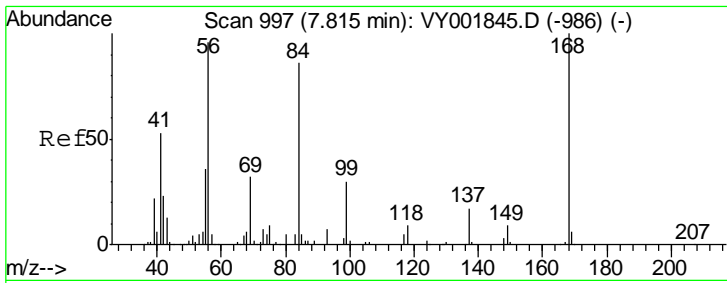
(#) = qualifier out of range (m) = manual integration (+) = signals summed

Data Path : Z:\VOASRV\HPCHEM1\MSVOA_Y\DATA\VY032020\
 Data File : VY002034.D
 Acq On : 20 Mar 2020 12:09
 Operator : SY/MD
 Sample : VY0320SBSD01
 Misc : 5.00G/5ML/MSVOA_Y/SOIL
 ALS Vial : 5 Sample Multiplier: 1

Instrument :
 MSVOA_Y
 Client Sampled :
 VY0320SBSD01

Quant Time: Mar 20 16:13:17 2020
 Quant Method : Z:\VOASRV\HPCHEM1\MSVOA_Y\METHODS\82Y030420S.M
 Quant Title : SW846 8260
 QLast Update : Thu Mar 05 04:05:33 2020
 Response via : Initial Calibration

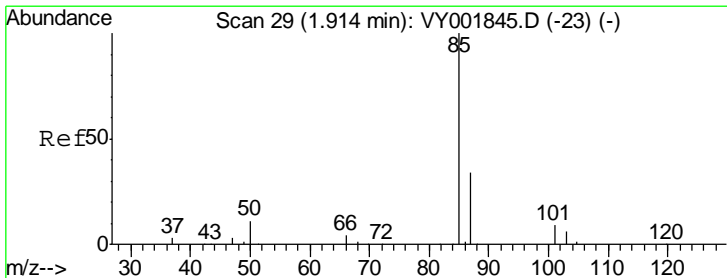
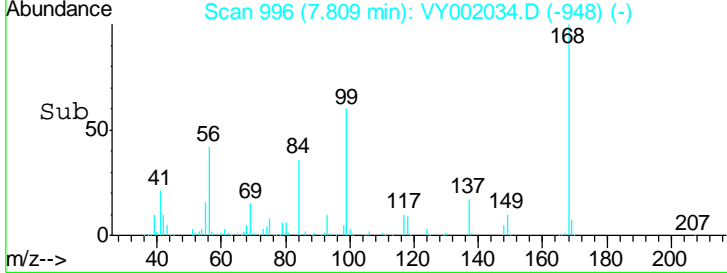
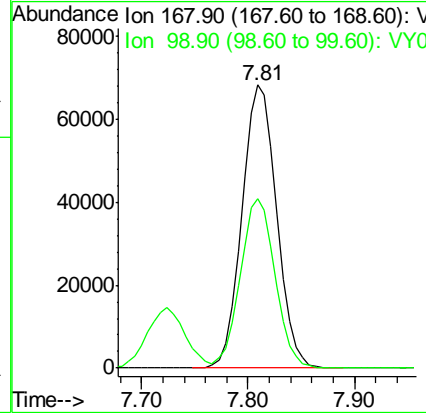
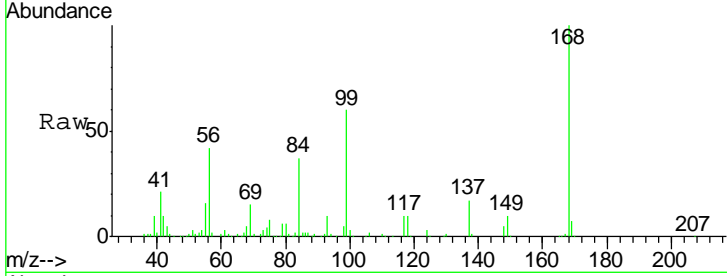




#1
 Pentafluorobenzene
 Concen: 50.00 ug/l
 RT: 7.81 min Scan# 996
 Delta R.T. -0.01 min
 Lab File: VY002034.D
 Acq: 20 Mar 2020 12:09

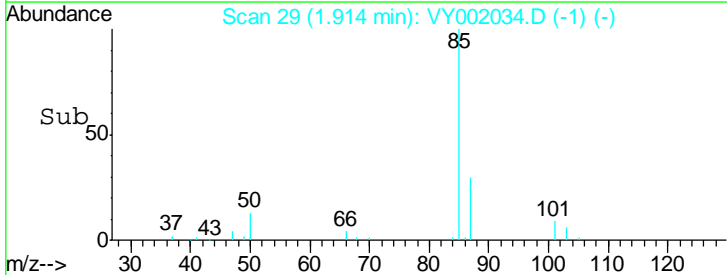
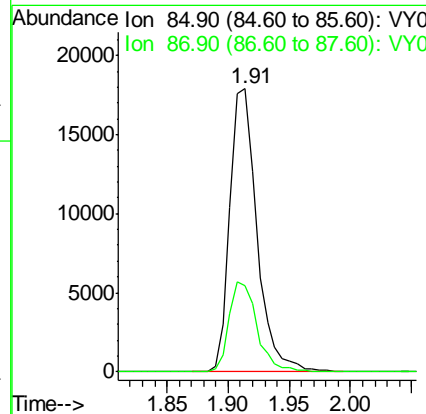
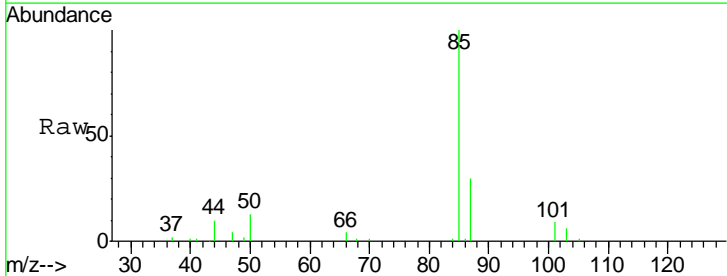
Instrument :
 MSVOA_Y
 ClientSampleId :
 VY0320SBSD01

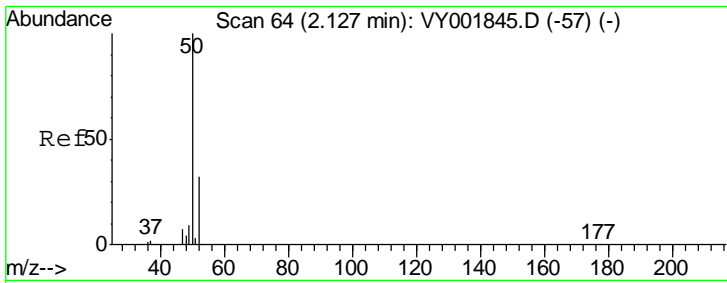
Tgt Ion: 168 Resp: 156063
 Ion Ratio Lower Upper
 168 100
 99 60.0 46.7 70.1



#2
 Dichlorodifluoromethane
 Concen: 19.08 ug/l
 RT: 1.91 min Scan# 29
 Delta R.T. -0.00 min
 Lab File: VY002034.D
 Acq: 20 Mar 2020 12:09

Tgt Ion: 85 Resp: 27480
 Ion Ratio Lower Upper
 85 100
 87 30.4 16.8 50.4

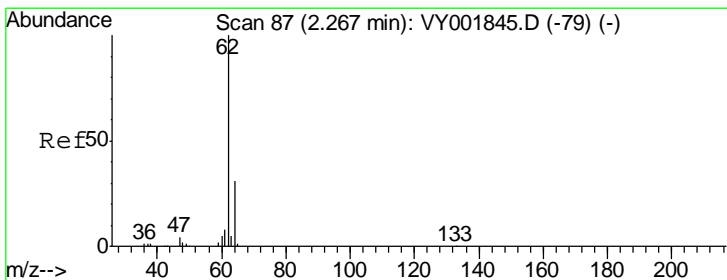
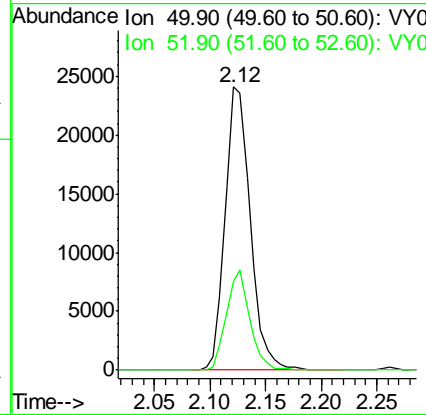
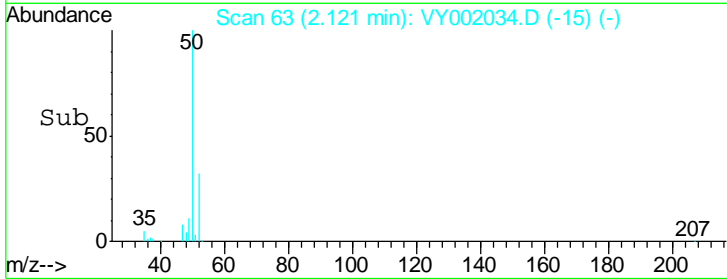
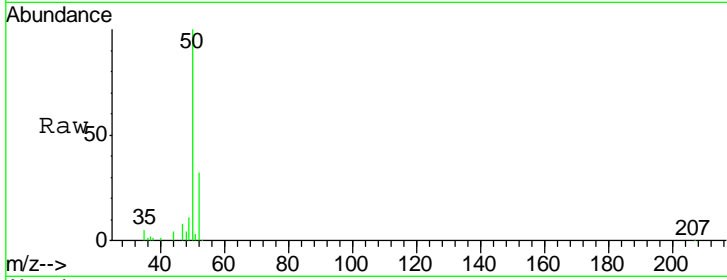




#3
 Chloromethane
 Concen: 19.45 ug/l
 RT: 2.12 min Scan# 63
 Delta R.T. -0.01 min
 Lab File: VY002034.D
 Acq: 20 Mar 2020 12:09

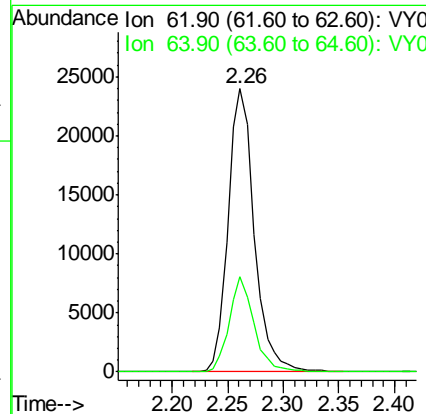
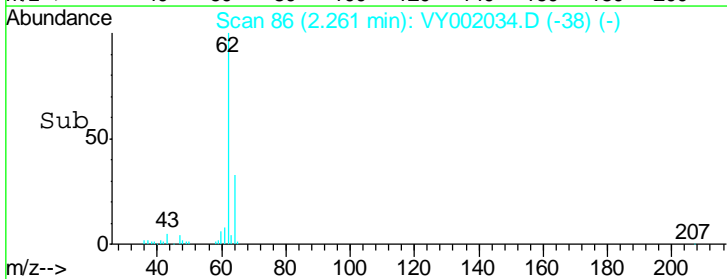
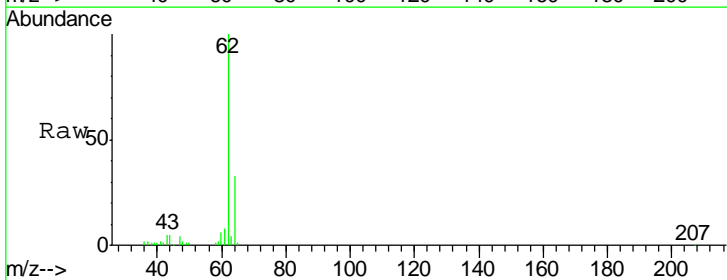
Instrument : MSVOA_Y
 ClientSampleId : VY0320SBSD01

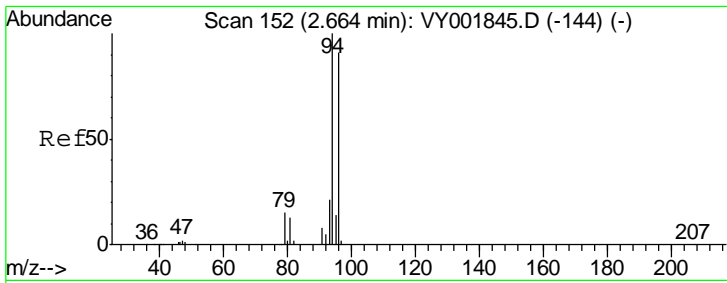
Tgt Ion: 50 Resp: 37771
 Ion Ratio Lower Upper
 50 100
 52 31.5 25.8 38.6



#4
 Vinyl Chloride
 Concen: 19.74 ug/l
 RT: 2.26 min Scan# 86
 Delta R.T. -0.01 min
 Lab File: VY002034.D
 Acq: 20 Mar 2020 12:09

Tgt Ion: 62 Resp: 39001
 Ion Ratio Lower Upper
 62 100
 64 33.5 25.1 37.7

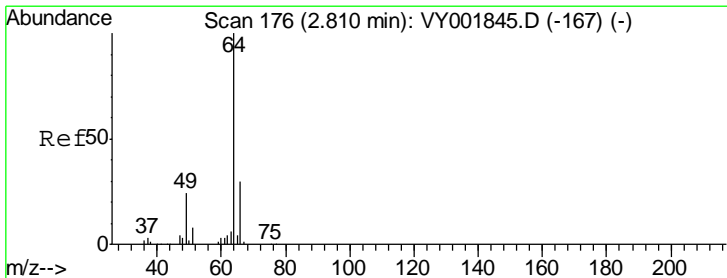
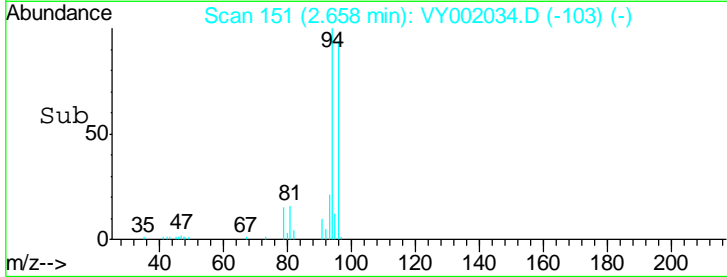
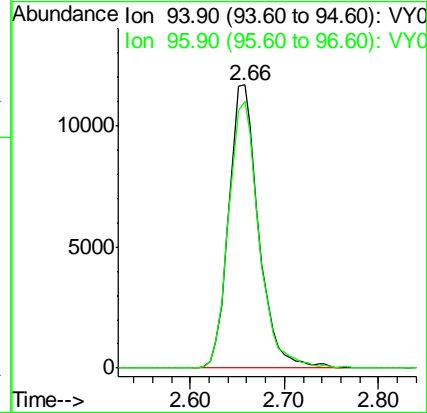
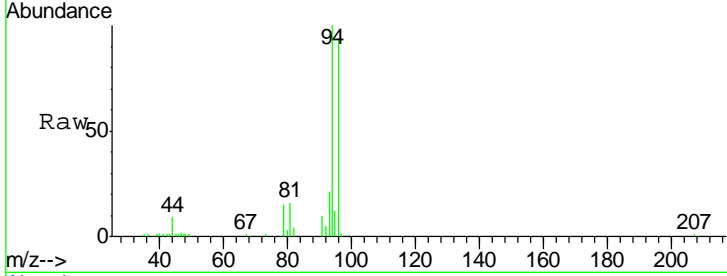




#5
 Bromomethane
 Concen: 18.62 ug/l
 RT: 2.66 min Scan# 151
 Delta R.T. -0.01 min
 Lab File: VY002034.D
 Acq: 20 Mar 2020 12:09

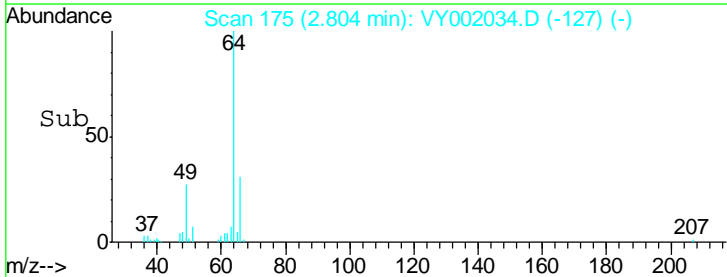
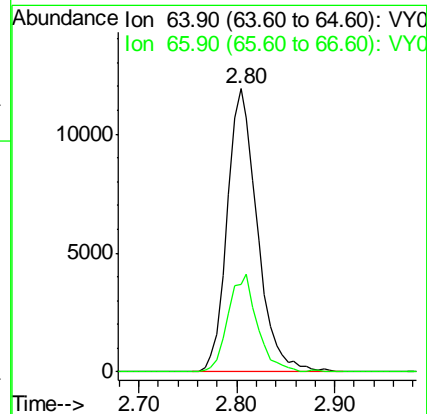
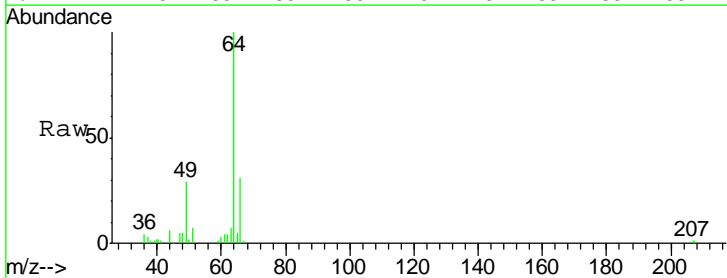
Instrument :
 MSVOA_Y
 ClientSampled :
 VY0320SBSD01

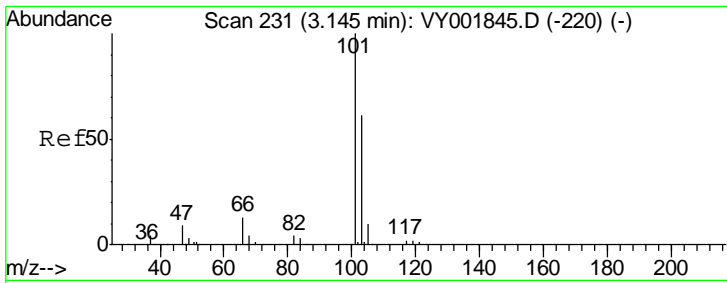
Tgt Ion: 94 Resp: 25725
 Ion Ratio Lower Upper
 94 100
 96 94.3 73.2 109.8



#6
 Chloroethane
 Concen: 20.44 ug/l
 RT: 2.80 min Scan# 175
 Delta R.T. -0.01 min
 Lab File: VY002034.D
 Acq: 20 Mar 2020 12:09

Tgt Ion: 64 Resp: 25370
 Ion Ratio Lower Upper
 64 100
 66 30.8 23.8 35.8

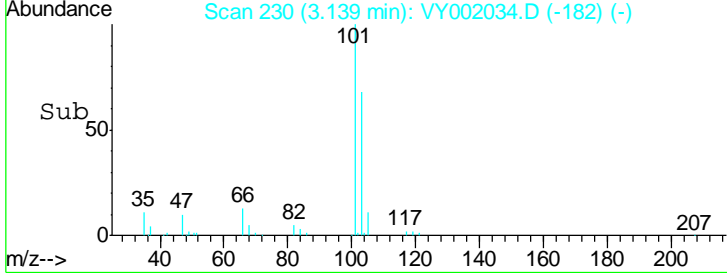
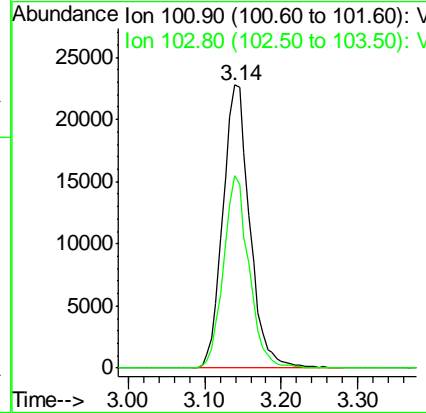
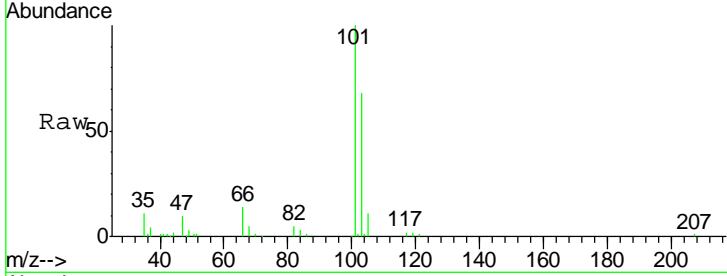




#7
 Trichlorofluoromethane
 Concen: 20.73 ug/l
 RT: 3.14 min Scan# 230
 Delta R.T. -0.01 min
 Lab File: VY002034.D
 Acq: 20 Mar 2020 12:09

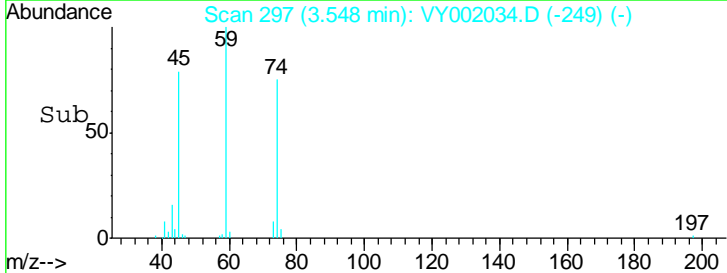
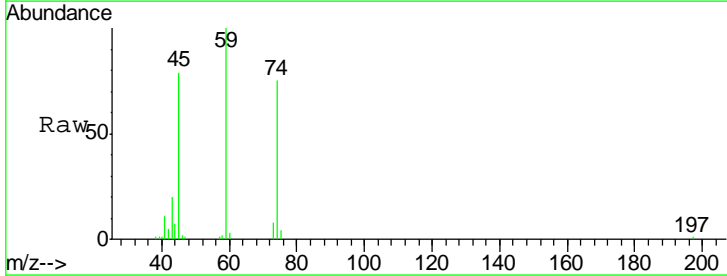
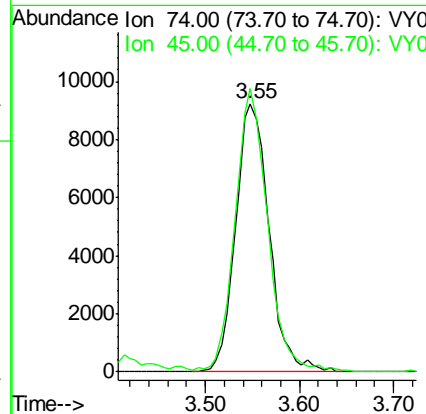
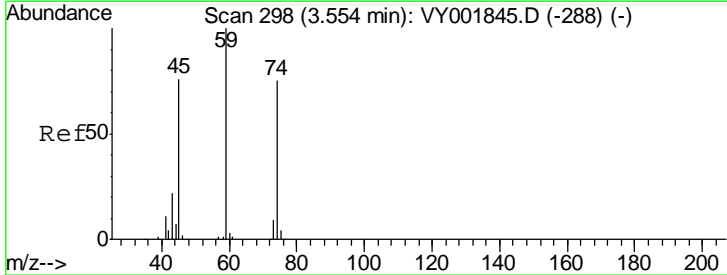
Instrument : MSVOA_Y
 ClientSampled : VY0320SBSD01

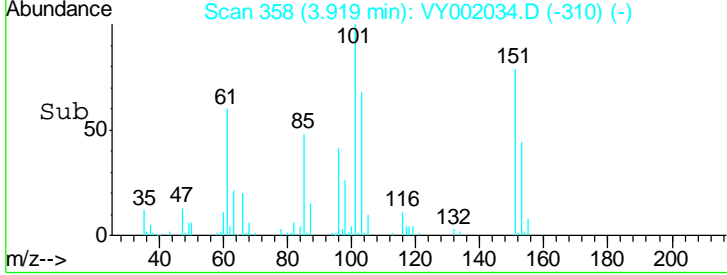
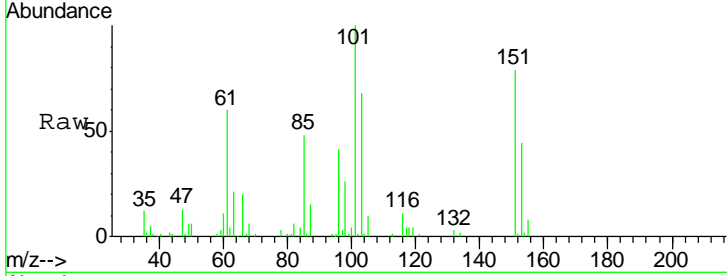
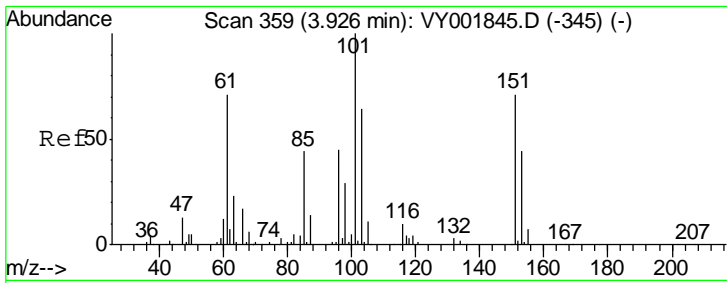
Tgt Ion:101 Resp: 55537
 Ion Ratio Lower Upper
 101 100
 103 68.0 49.1 73.7



#8
 Diethyl Ether
 Concen: 21.66 ug/l
 RT: 3.55 min Scan# 297
 Delta R.T. -0.01 min
 Lab File: VY002034.D
 Acq: 20 Mar 2020 12:09

Tgt Ion: 74 Resp: 22874
 Ion Ratio Lower Upper
 74 100
 45 102.6 50.5 151.5

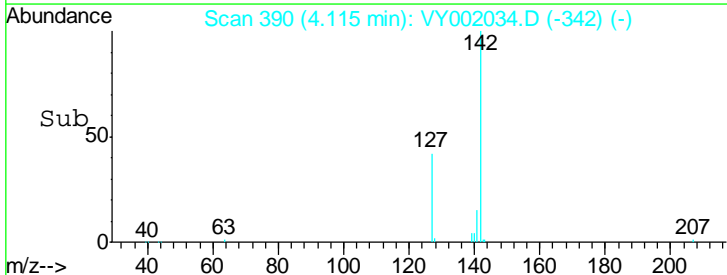
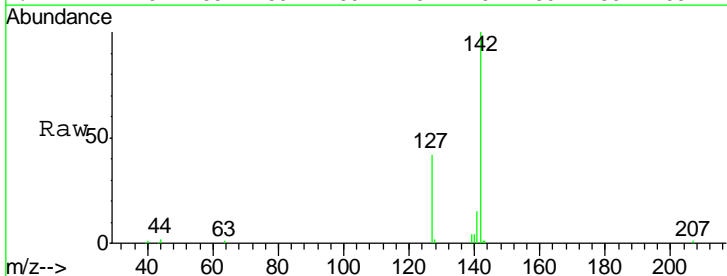
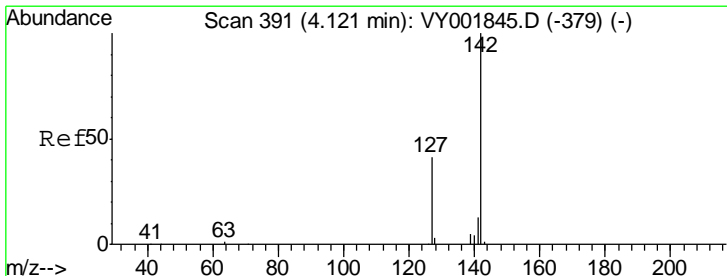
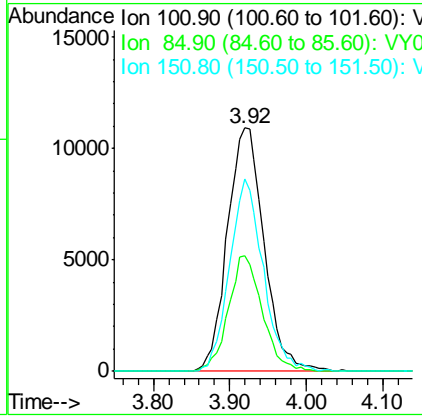




#9
 1,1,2-Trichlorotrifluoroethane
 Concen: 21.05 ug/l
 RT: 3.92 min Scan# 358
 Delta R.T. -0.01 min
 Lab File: VY002034.D
 Acq: 20 Mar 2020 12:09

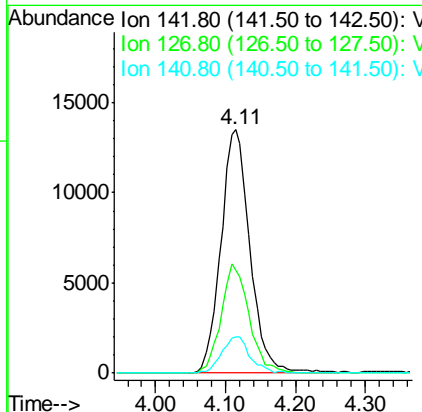
Instrument :
 MSVOA_Y
 ClientSampleId :
 VY0320SBSD01

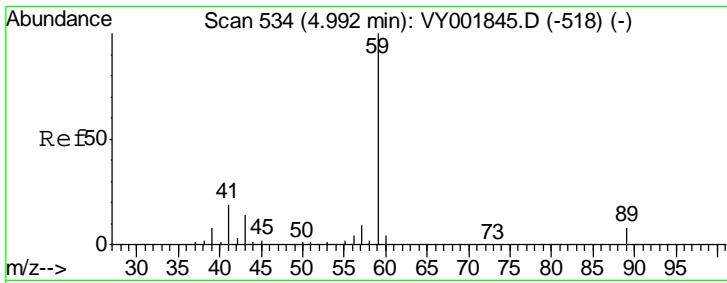
Tgt Ion	Resp	Lower	Upper
101	36279		
85	43.8	35.3	52.9
151	72.8	57.0	85.4



#10
 Methyl Iodide
 Concen: 19.52 ug/l
 RT: 4.11 min Scan# 390
 Delta R.T. -0.01 min
 Lab File: VY002034.D
 Acq: 20 Mar 2020 12:09

Tgt Ion	Resp	Lower	Upper
142	38895		
127	43.1	32.7	49.1
141	14.3	11.0	16.6

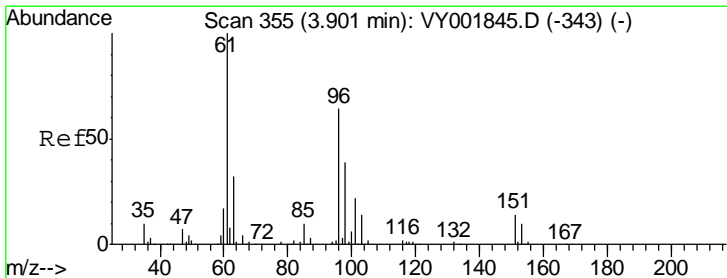
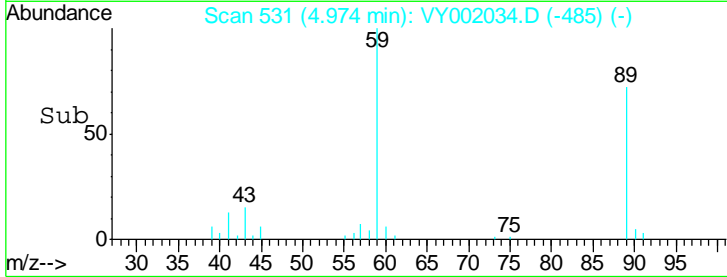
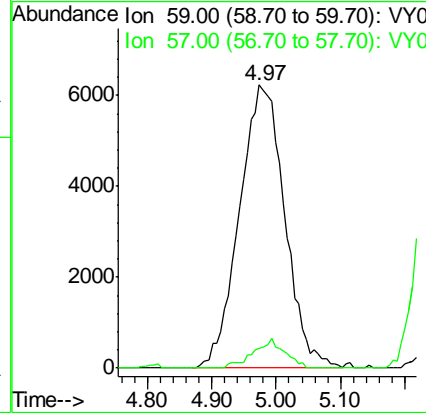
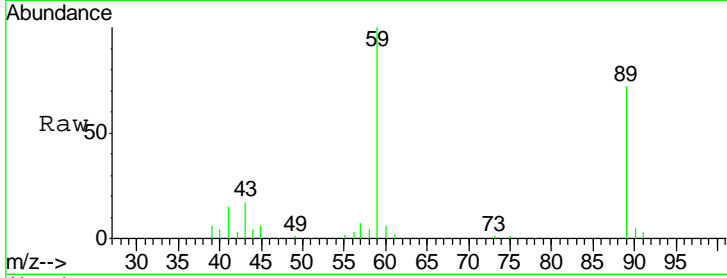




#11
 Tert butyl alcohol
 Concen: 167.11 ug/l
 RT: 4.97 min Scan# 531
 Delta R.T. -0.02 min
 Lab File: VY002034.D
 Acq: 20 Mar 2020 12:09

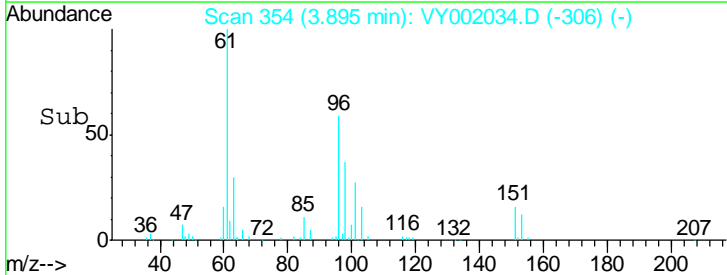
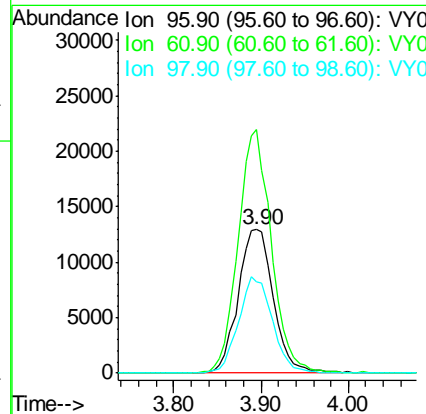
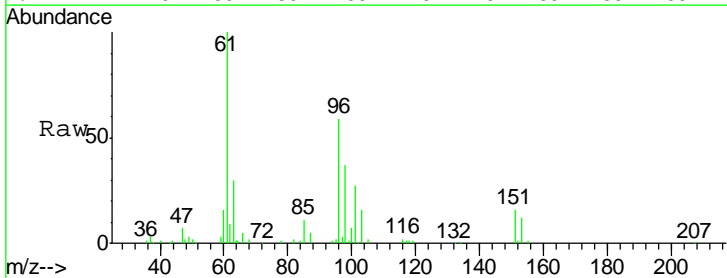
Instrument : MSVOA_Y
 ClientSampled : VY0320SBSD01

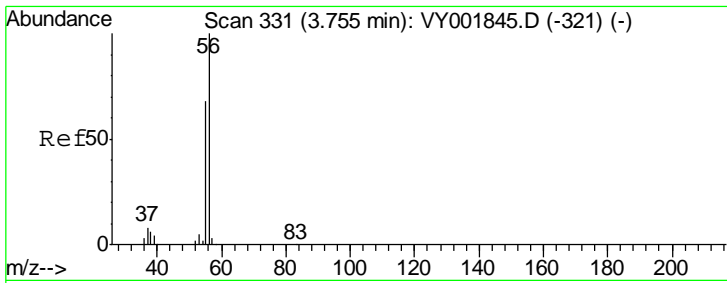
Tgt Ion	Resp	Lower	Upper
59	100		
57	7.1	7.4	11.2#



#12
 1,1-Dichloroethene
 Concen: 20.85 ug/l
 RT: 3.90 min Scan# 354
 Delta R.T. -0.01 min
 Lab File: VY002034.D
 Acq: 20 Mar 2020 12:09

Tgt Ion	Resp	Lower	Upper
96	100		
61	169.5	124.8	187.2
98	63.1	49.2	73.8

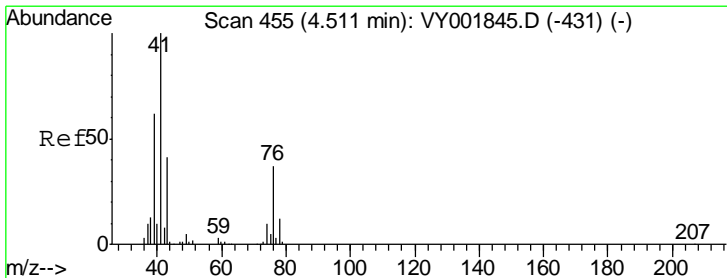
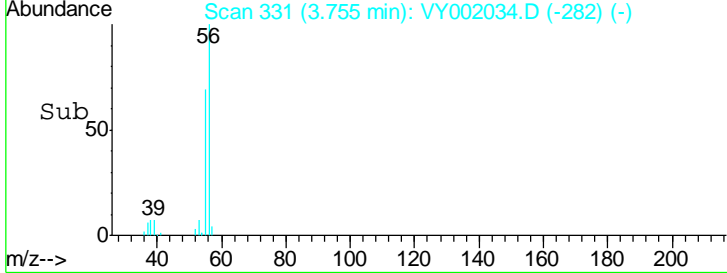
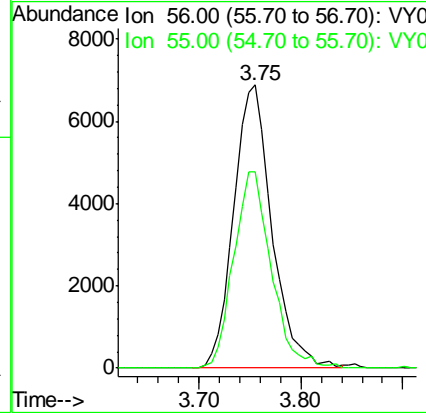
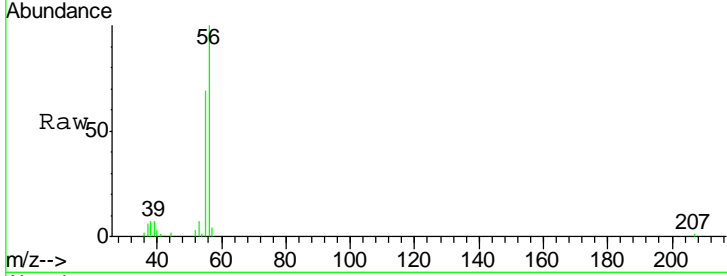




#13
 Acrolein
 Concen: 76.31 ug/l
 RT: 3.75 min Scan# 331
 Delta R.T. -0.00 min
 Lab File: VY002034.D
 Acq: 20 Mar 2020 12:09

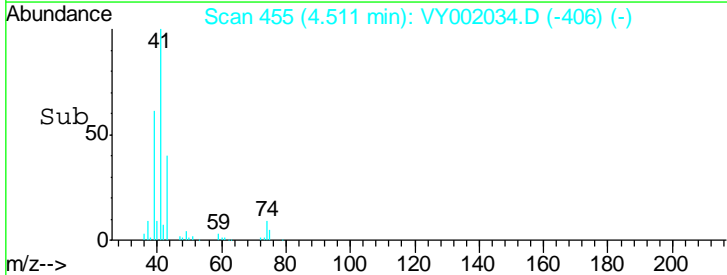
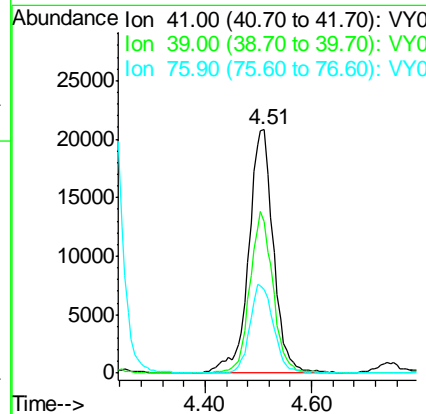
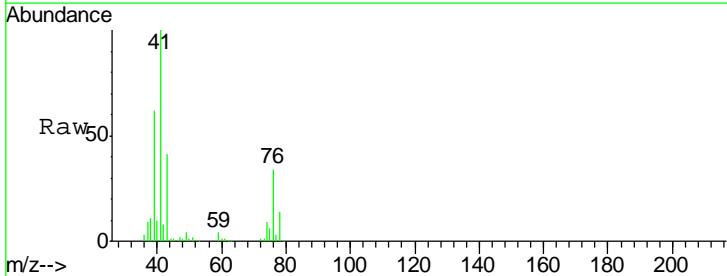
Instrument : MSVOA_Y
 ClientSampled : VY0320SBSD01

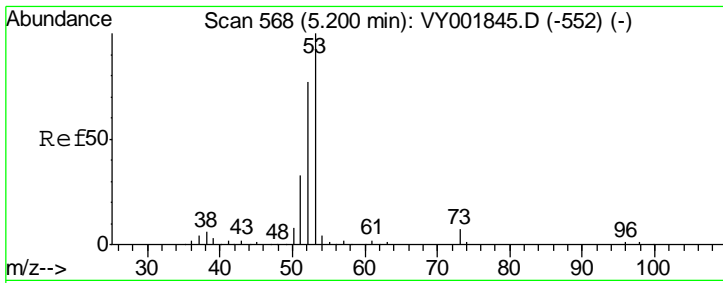
Tgt Ion	Resp	Lower	Upper
56	17866		
55	68.4	54.0	81.0



#14
 Allyl chloride
 Concen: 21.61 ug/l
 RT: 4.51 min Scan# 455
 Delta R.T. -0.00 min
 Lab File: VY002034.D
 Acq: 20 Mar 2020 12:09

Tgt Ion	Resp	Lower	Upper
41	66474		
39	61.5	49.0	73.6
76	34.5	28.9	43.3

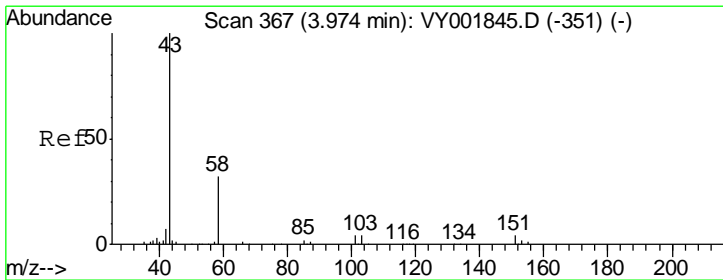
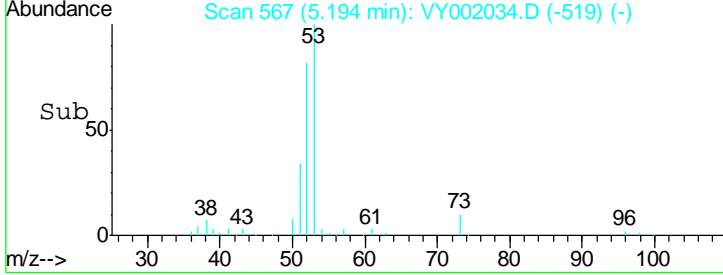
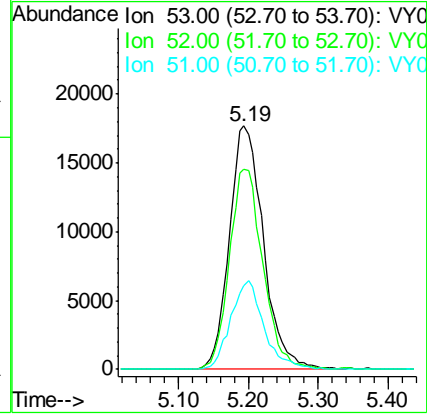
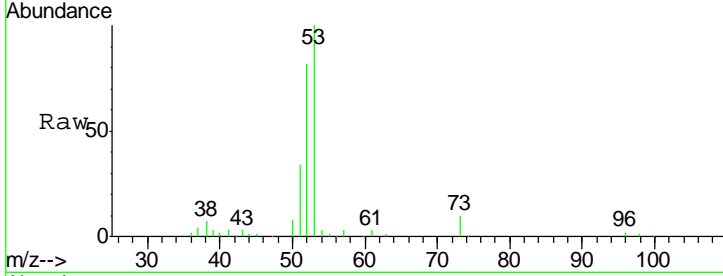




#15
 Acrylonitrile
 Concen: 105.78 ug/l
 RT: 5.19 min Scan# 567
 Delta R.T. -0.01 min
 Lab File: VY002034.D
 Acq: 20 Mar 2020 12:09

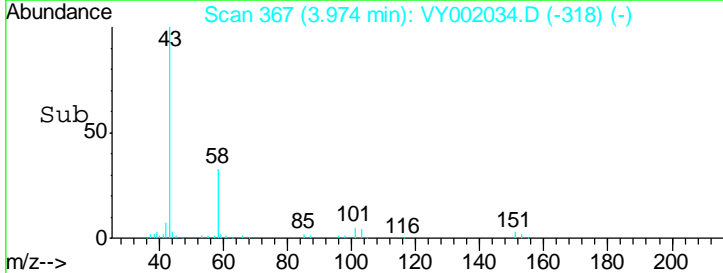
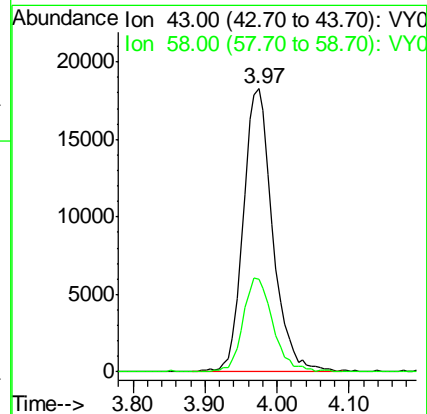
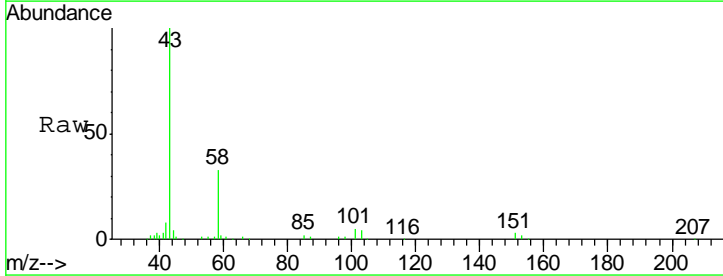
Instrument : MSVOA_Y
 ClientSampleId : VY0320SBSD01

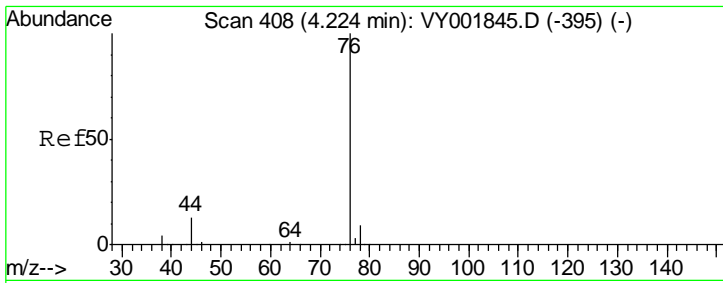
Tgt Ion	Resp	Lower	Upper
53	59691		
52	81.2	65.1	97.7
51	35.7	27.5	41.3



#16
 Acetone
 Concen: 106.60 ug/l
 RT: 3.97 min Scan# 367
 Delta R.T. -0.00 min
 Lab File: VY002034.D
 Acq: 20 Mar 2020 12:09

Tgt Ion	Resp	Lower	Upper
43	51730		
58	32.5	25.9	38.9

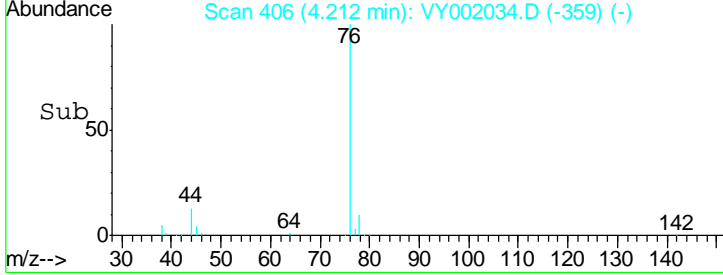
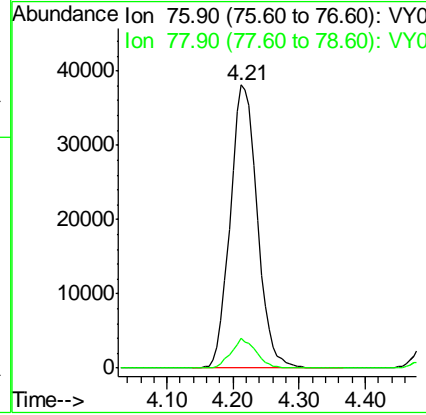
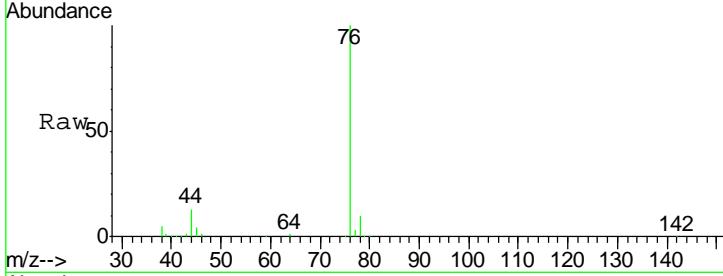




#17
 Carbon Disulfide
 Concen: 18.54 ug/l
 RT: 4.21 min Scan# 406
 Delta R.T. -0.01 min
 Lab File: VY002034.D
 Acq: 20 Mar 2020 12:09

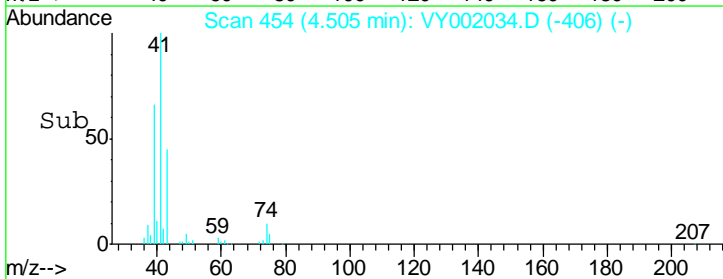
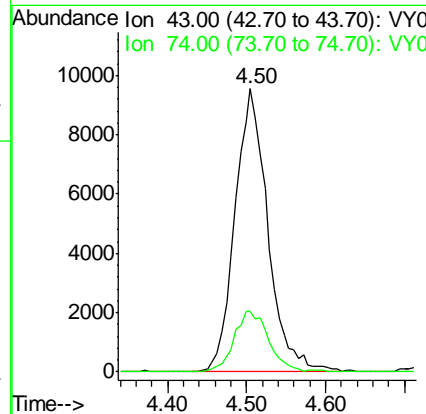
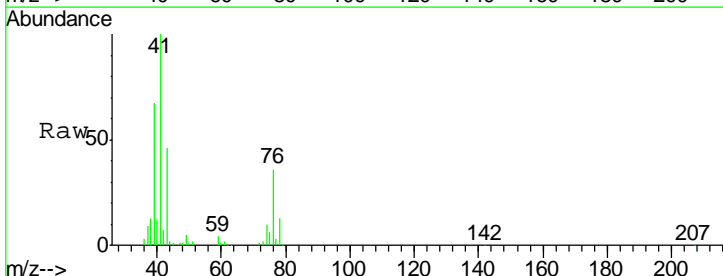
Instrument :
 MSVOA_Y
ClientSampled :
 VY0320SBSD01

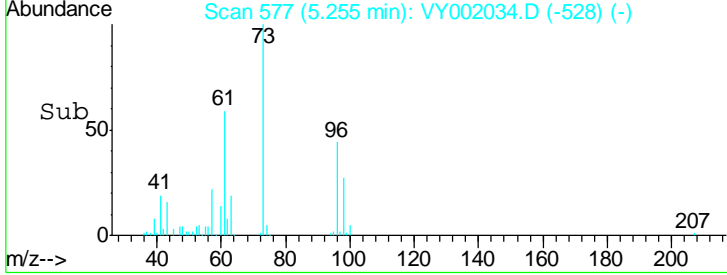
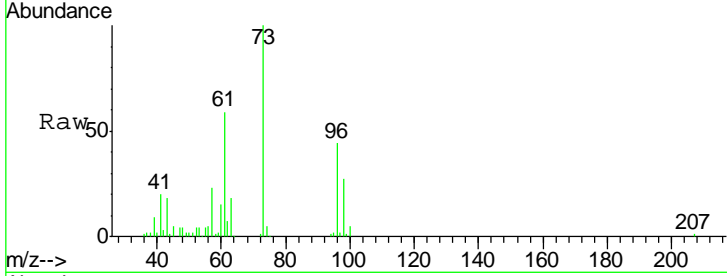
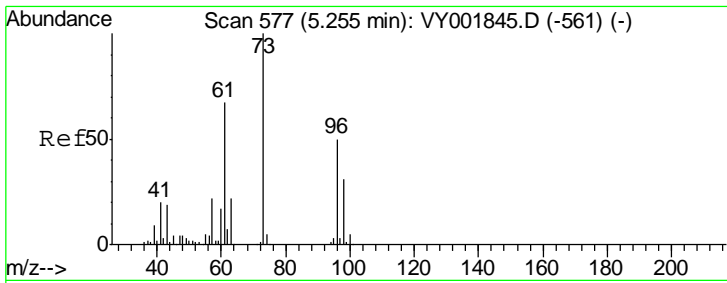
Tgt Ion	Resp	Lower	Upper
76	108137		
78	10.4	7.4	11.2



#18
 Methyl Acetate
 Concen: 22.23 ug/l
 RT: 4.50 min Scan# 454
 Delta R.T. -0.01 min
 Lab File: VY002034.D
 Acq: 20 Mar 2020 12:09

Tgt Ion	Resp	Lower	Upper
43	27722		
74	22.4	19.0	28.6

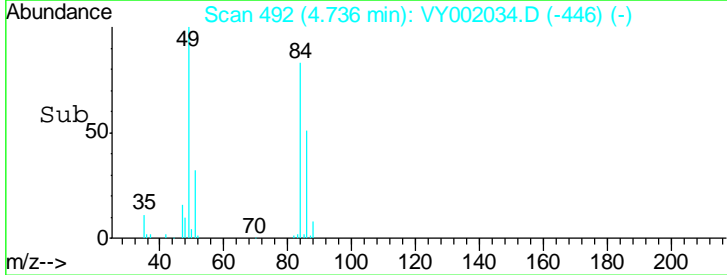
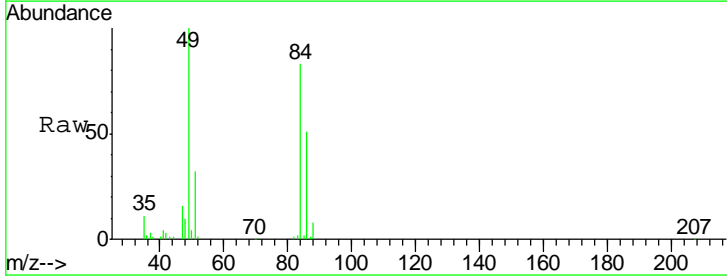
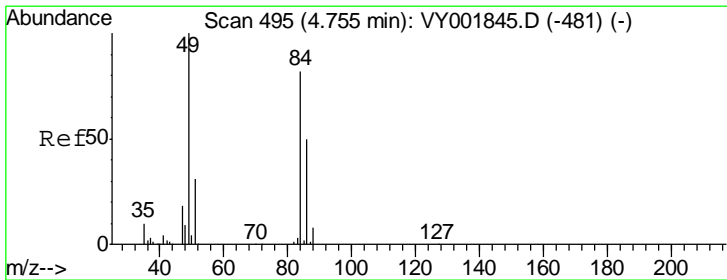
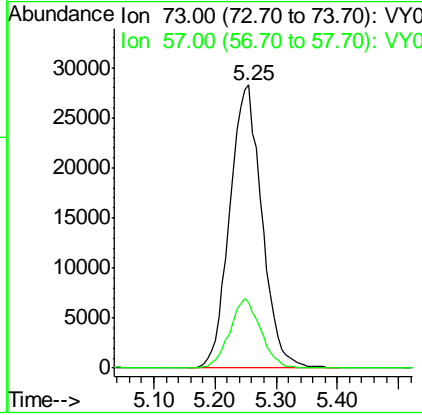




#19
 Methyl tert-butyl Ether
 Concen: 21.83 ug/l
 RT: 5.25 min Scan# 577
 Delta R.T. -0.00 min
 Lab File: VY002034.D
 Acq: 20 Mar 2020 12:09

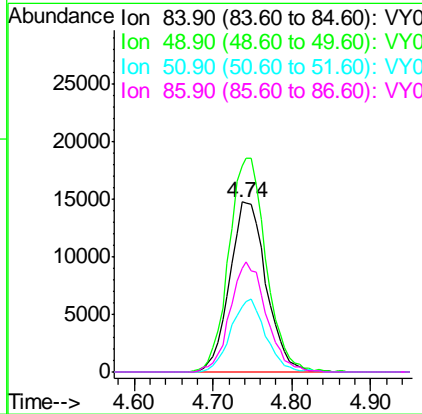
Instrument : MSVOA_Y
 ClientSampled : VY0320SBSD01

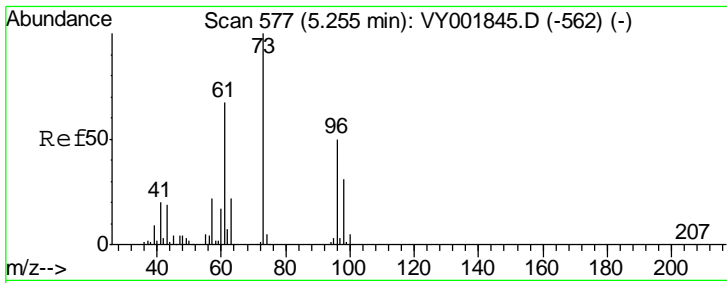
Tgt Ion	Resp	Lower	Upper
73	102644		
57	23.1	17.4	26.2



#20
 Methylene Chloride
 Concen: 22.90 ug/l
 RT: 4.74 min Scan# 492
 Delta R.T. -0.02 min
 Lab File: VY002034.D
 Acq: 20 Mar 2020 12:09

Tgt Ion	Resp	Lower	Upper
84	47623		
49	121.1	98.2	147.2
51	38.5	30.2	45.2
86	61.3	48.9	73.3

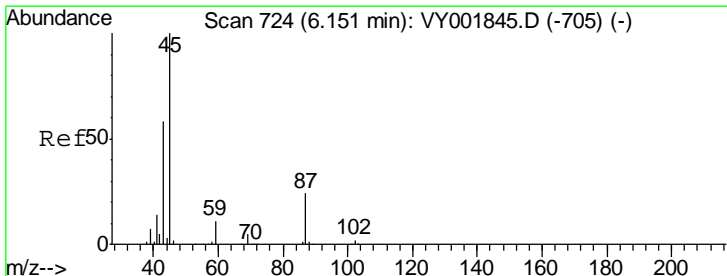
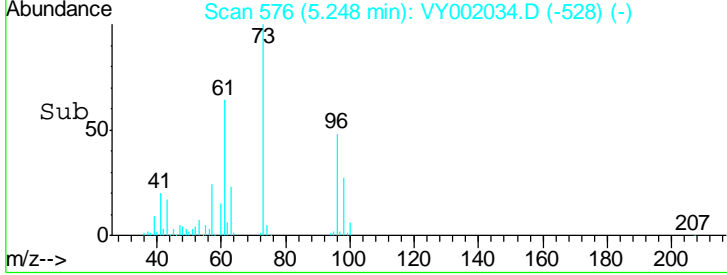
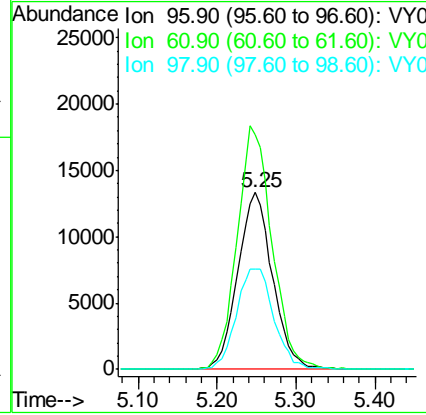
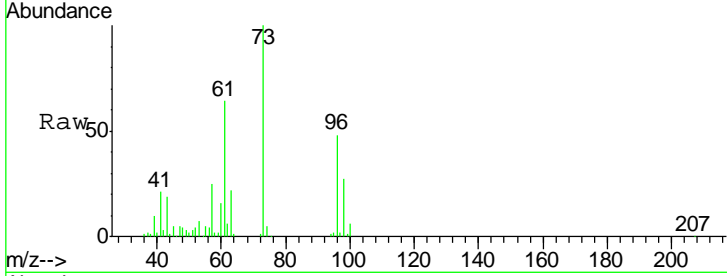




#21
 trans-1,2-Dichloroethene
 Concen: 20.74 ug/l
 RT: 5.25 min Scan# 576
 Delta R.T. -0.01 min
 Lab File: VY002034.D
 Acq: 20 Mar 2020 12:09

Instrument :
 MSVOA_Y
ClientSampled :
 VY0320SBSD01

Tgt Ion	Resp	Lower	Upper
96	40848		
61	133.1	107.7	161.5
98	56.8	49.3	73.9



#22
 Diisopropyl ether
 Concen: 22.31 ug/l
 RT: 6.15 min Scan# 724
 Delta R.T. -0.00 min
 Lab File: VY002034.D
 Acq: 20 Mar 2020 12:09

Tgt Ion	Resp	Lower	Upper
45	140651		
43	53.1	47.2	70.8
87	27.5	19.8	29.8
59	11.6	8.8	13.2

