

Data Path : Z:\VOASRV\HPCHEM1\MSVOA Y\DATA\VY032020\
 Data File : VY002032.D
 Acq On : 20 Mar 2020 11:09
 Operator : SY/MD
 Sample : VY0320SBL01
 Misc : 5.00G/5ML/MSVOA Y/SOIL
 ALS Vial : 3 Sample Multiplier: 1

Instrument :
 MSVOA_Y
 ClientSampleId :
 VY0320SBL01

Integration Parameters: RTEINT.P

Integrator: RTE
 Smoothing : ON
 Sampling : 1
 Start Thrs: 0.2
 Stop Thrs : 0

Filtering: 5
 Min Area: 3 % of largest Peak
 Max Peaks: 100
 Peak Location: TOP

If leading or trailing edge < 100 prefer < Baseline drop else tangent >
 Peak separation: 5

Method : Z:\VOASRV\HPCHEM1\MSVOA_Y\METHODS\82Y030420S.M
 Title : SW846 8260

Signal : TIC

peak #	R.T. min	first scan	max scan	last scan	PK TY	peak height	corr. area	corr. % max.	% of total
1	3.267	244	251	263	rVB3	4050	9173	1.01%	0.159%
2	4.225	397	408	417	rBV2	4398	14908	1.64%	0.259%
3	4.724	482	490	511	rBV4	7946	29396	3.24%	0.510%
4	6.992	849	862	875	rBV	47455	140219	15.45%	2.432%
5	7.730	973	983	988	rBV2	117455	270744	29.83%	4.696%
6	7.803	988	995	1005	rVB	196818	446461	49.19%	7.744%
7	8.138	1038	1050	1065	rVB2	186429	647348	71.32%	11.228%
8	8.699	1133	1142	1152	rBV	330300	650086	71.62%	11.276%
9	9.620	1285	1293	1303	rVB	14987	29338	3.23%	0.509%
10	9.754	1308	1315	1323	rVB2	39971	80538	8.87%	1.397%
11	10.077	1360	1368	1371	rBV	12537	23071	2.54%	0.400%
12	10.120	1371	1375	1379	rVV2	18527	32664	3.60%	0.567%
13	10.187	1379	1386	1394	rVB	516451	907689	100.00%	15.744%
14	10.583	1441	1451	1457	rBV2	69792	127767	14.08%	2.216%
15	10.949	1506	1511	1521	rVV	26566	45868	5.05%	0.796%
16	11.047	1521	1527	1533	rVB2	6179	10300	1.13%	0.179%
17	11.321	1567	1572	1580	rVB	44504	74829	8.24%	1.298%
18	11.492	1593	1600	1609	rBV	481227	795816	87.67%	13.803%
19	12.485	1756	1763	1772	rVB2	391486	652606	71.90%	11.319%
20	12.845	1812	1822	1829	rBV4	10673	23602	2.60%	0.409%
21	13.186	1873	1878	1885	rBV3	6461	9920	1.09%	0.172%
22	13.430	1911	1918	1925	rBV	468153	707352	77.93%	12.269%
23	13.973	2000	2007	2018	rVB2	10681	18218	2.01%	0.316%
24	15.320	2221	2228	2235	rVV	10881	17503	1.93%	0.304%

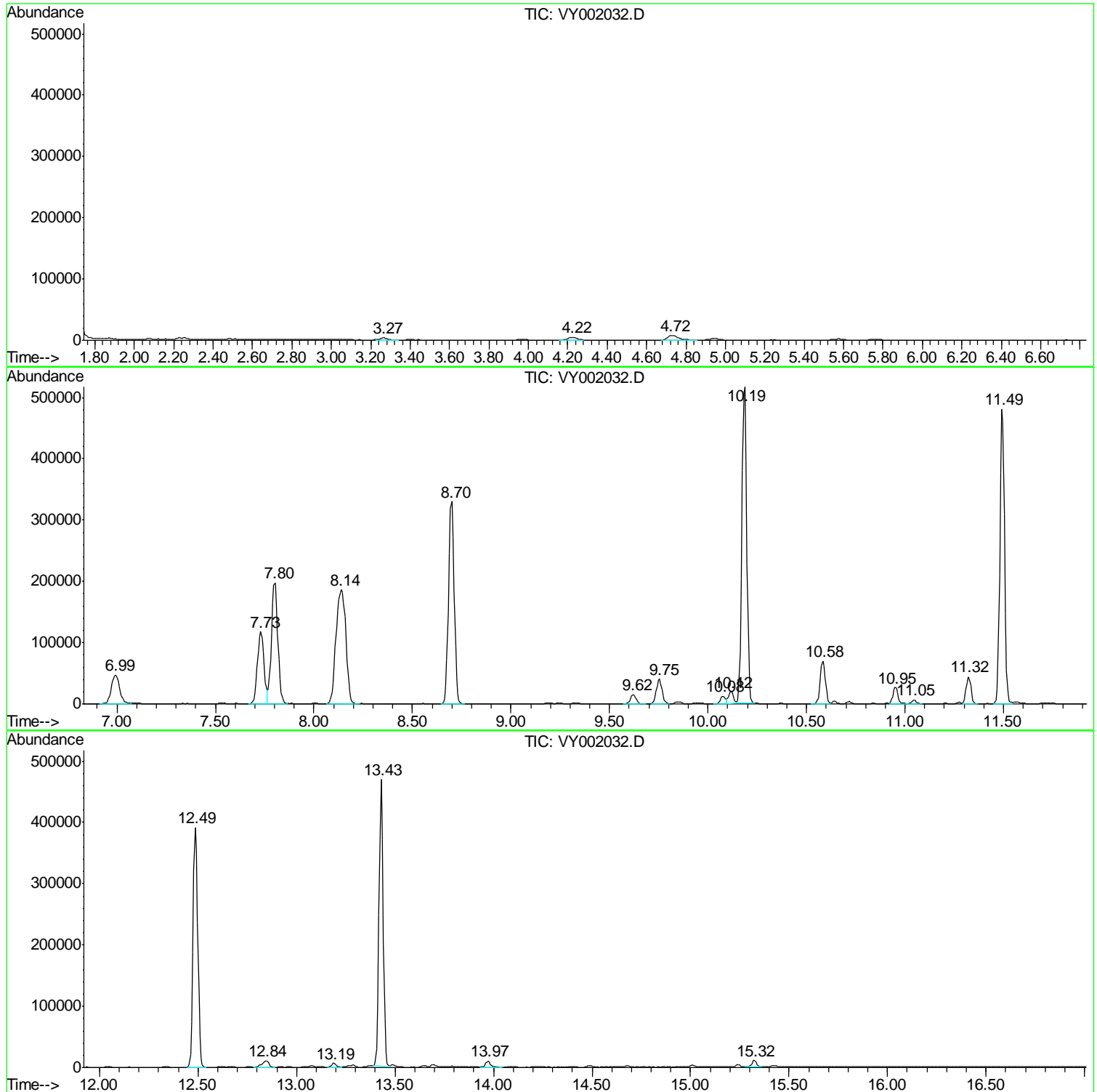
Sum of corrected areas: 5765416

Data Path : Z:\VOASRV\HPCHEM1\MSVOA Y\DATA\VY032020\
Data File : VY002032.D
Acq On : 20 Mar 2020 11:09
Operator : SY/MD
Sample : VY0320SBL01
Misc : 5.00G/5ML/MSVOA Y/SOIL
ALS Vial : 3 Sample Multiplier: 1

Instrument :
MSVOA_Y
ClientSampleId :
VY0320SBL01

Quant Method : Z:\VOASRV\HPCHEM1\MSVOA_Y\METHODS\82Y030420S.M
Quant Title : SW846 8260

TIC Library : C:\DATABASE\NIST11.L
TIC Integration Parameters: LSCINT.P



Data Path : Z:\VOASRV\HPCHEM1\MSVOA Y\DATA\VY032020\
 Data File : VY002032.D
 Acq On : 20 Mar 2020 11:09
 Operator : SY/MD
 Sample : VY0320SBL01
 Misc : 5.00G/5ML/MSVOA Y/SOIL
 ALS Vial : 3 Sample Multiplier: 1

Instrument :
 MSVOA_Y
 ClientSampleID :
 VY0320SBL01

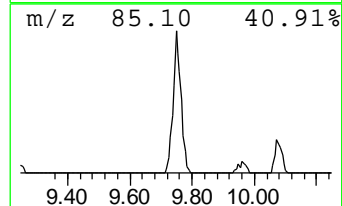
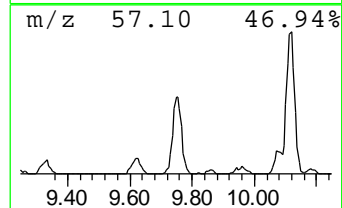
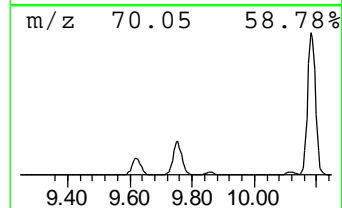
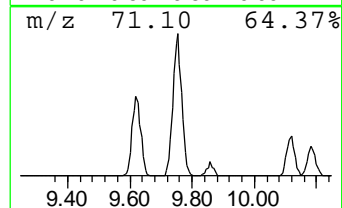
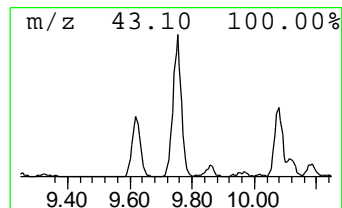
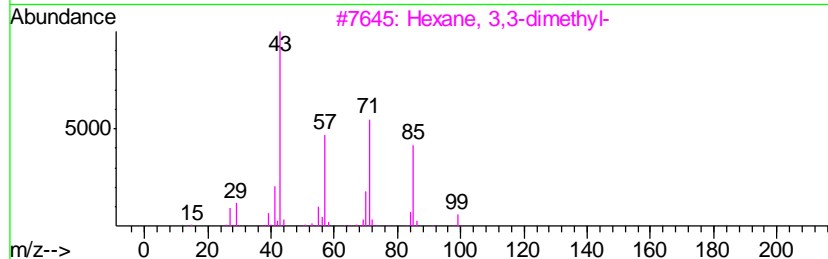
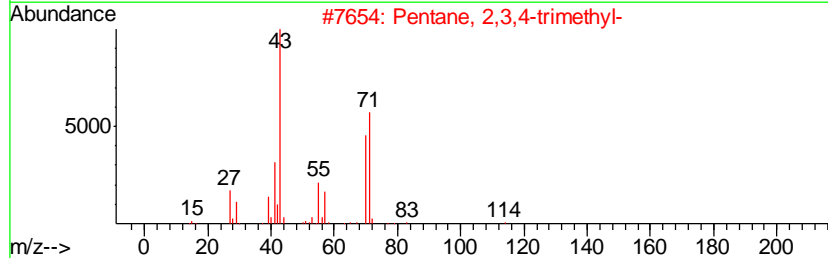
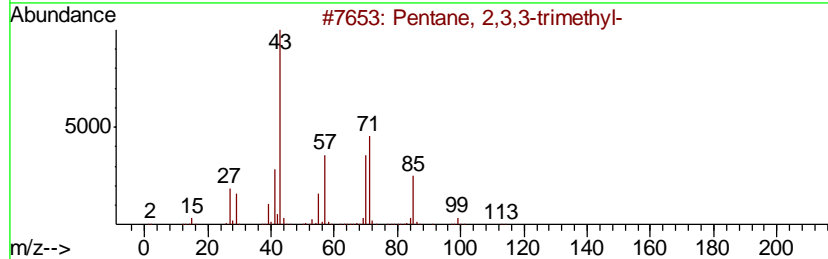
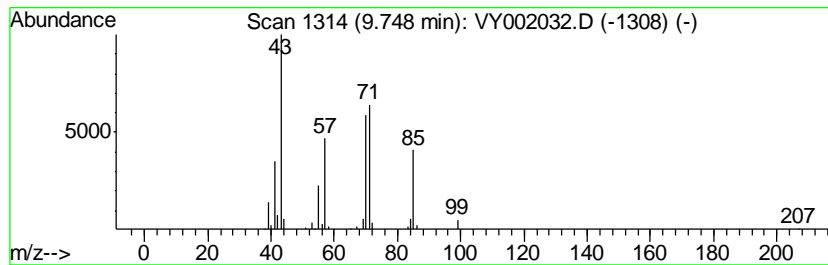
Quant Method : Z:\VOASRV\HPCHEM1\MSVOA_Y\METHODS\82Y030420S.M
 Quant Title : SW846 8260

TIC Library : C:\DATABASE\NIST11.L
 TIC Integration Parameters: LSCINT.P

 Peak Number 2 Pentane, 2,3,3-trimethyl- Concentration Rank 3

R.T.	EstConc	Area	Relative to ISTD	R.T.
9.75	6.19 ug/l	80538	1,4-Difluorobenzene	8.70

Hit#	of	Tentative ID	MW	MolForm	CAS#	Qual
1	5	Pentane, 2,3,3-trimethyl-	114	C8H18	000560-21-4	90
2		Pentane, 2,3,4-trimethyl-	114	C8H18	000565-75-3	59
3		Hexane, 3,3-dimethyl-	114	C8H18	000563-16-6	59
4		Hexane, 2,3,4-trimethyl-	128	C9H20	000921-47-1	59
5		Decane, 3,3,4-trimethyl-	184	C13H28	049622-18-6	59



Data Path : Z:\VOASRV\HPCHEM1\MSVOA_Y\DATA\VY032020\
Data File : VY002032.D
Acq On : 20 Mar 2020 11:09
Operator : SY/MD
Sample : VY0320SBL01
Misc : 5.00G/5ML/MSVOA_Y/SOIL
ALS Vial : 3 Sample Multiplier: 1

Instrument :
MSVOA_Y
ClientSampleId :
VY0320SBL01

Quant Method : Z:\VOASRV\HPCHEM1\MSVOA_Y\METHODS\82Y030420S.M
Quant Title : SW846 8260

TIC Library : C:\DATABASE\NIST11.L
TIC Integration Parameters: LSCINT.P

TIC Top Hit name	RT	EstConc	Units	Response	--Internal Standard--			
					#	RT	Resp	Conc
Pentane, 2,3,3-tr...	9.75	6.2	ug/l	80538	2	8.70	650086	50.0