

Data Path : Z:\voasrv\HPCHEM1\MSVOA_Y\Data\VY032222\
 Data File : VY008000.D
 Acq On : 22 Mar 2022 15:08
 Operator : SY/MD
 Sample : VIBLK
 Misc : 5.00g/5.0mL/MSVOA_Y/SOIL
 ALS Vial : 13 Sample Multiplier: 1

Instrument :
 MSVOA_Y
 ClientSampleId :
 VIBLK

Quant Time: Mar 23 05:07:37 2022
 Quant Method : Z:\voasrv\HPCHEM1\MSVOA_Y\methods\82Y031722S.M
 Quant Title : SW846 8260
 QLast Update : Thu Mar 17 13:55:34 2022
 Response via : Initial Calibration

Compound	R.T.	QIon	Response	Conc	Units	Dev(Min)

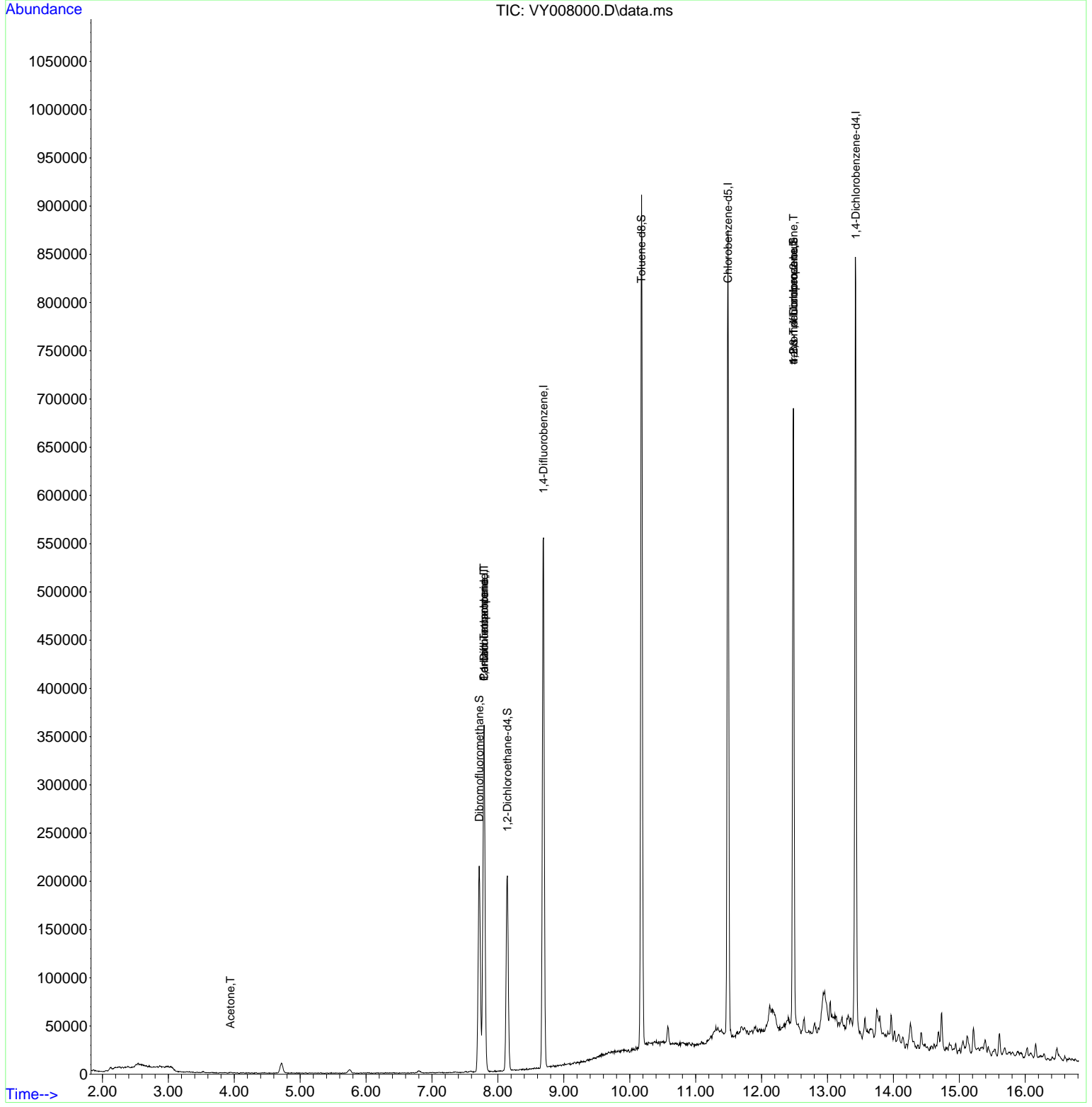
Internal Standards						
1) Pentafluorobenzene	7.789	168	265591	50.000	ug/l	0.00
34) 1,4-Difluorobenzene	8.691	114	482561	50.000	ug/l	0.00
63) Chlorobenzene-d5	11.490	117	446102	50.000	ug/l	0.00
72) 1,4-Dichlorobenzene-d4	13.428	152	195285	50.000	ug/l	0.00
System Monitoring Compounds						
33) 1,2-Dichloroethane-d4	8.143	65	158319	52.281	ug/l	0.00
Spiked Amount	50.000	Range 50 - 163	Recovery	=	104.560%	
35) Dibromofluoromethane	7.716	113	151956	44.838	ug/l	0.00
Spiked Amount	50.000	Range 54 - 147	Recovery	=	89.680%	
50) Toluene-d8	10.179	98	587280	58.375	ug/l	0.00
Spiked Amount	50.000	Range 49 - 140	Recovery	=	116.740%	
62) 4-Bromofluorobenzene	12.483	95	207272	42.615	ug/l	0.00
Spiked Amount	50.000	Range 25 - 144	Recovery	=	85.220%	
Target Compounds						
					Qvalue	
2) Dichlorodifluoromethane	1.900	85	55	Below Cal	#	43
3) Chloromethane	2.107	50	718	Below Cal	#	77
4) Vinyl Chloride	2.253	62	179	Below Cal	#	43
5) Bromomethane	2.650	94	152	Below Cal	#	62
16) Acetone	3.942	43	1945	2.421	ug/l	91
18) Methyl Acetate	4.497	43	843	Below Cal	#	61
20) Methylene Chloride	4.716	84	8258	Below Cal	#	73
31) Cyclohexane	7.783	56	5921	Below Cal	#	1
36) 1,1-Dichloropropene	7.789	75	22050	4.387	ug/l	# 51
38) Carbon Tetrachloride	7.789	117	28169	5.244	ug/l	# 15
39) Methylcyclohexane	8.984	83	56	Below Cal		90
76) 1,2,3-Trichloropropane	12.483	75	109266	39.255	ug/l	# 100
81) trans-1,4-Dichloro-2-b...	12.483	75	109266	82.452	ug/l	# 8

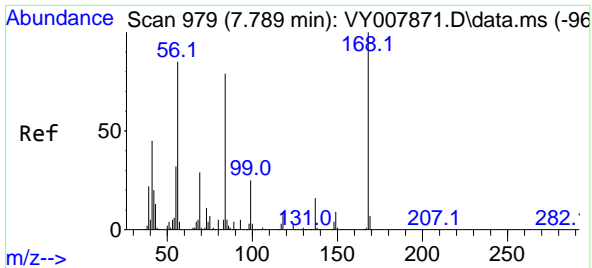
(#) = qualifier out of range (m) = manual integration (+) = signals summed

Data Path : Z:\voasrv\HPCHEM1\MSVOA_Y\Data\VY032222\
 Data File : VY008000.D
 Acq On : 22 Mar 2022 15:08
 Operator : SY/MD
 Sample : VIBLK
 Misc : 5.00g/5.0mL/MSVOA_Y/SOIL
 ALS Vial : 13 Sample Multiplier: 1

Instrument :
 MSVOA_Y
 ClientSampleId :
 VIBLK

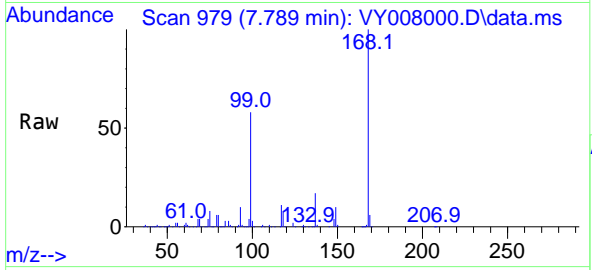
Quant Time: Mar 23 05:07:37 2022
 Quant Method : Z:\voasrv\HPCHEM1\MSVOA_Y\methods\82Y031722S.M
 Quant Title : SW846 8260
 QLast Update : Thu Mar 17 13:55:34 2022
 Response via : Initial Calibration



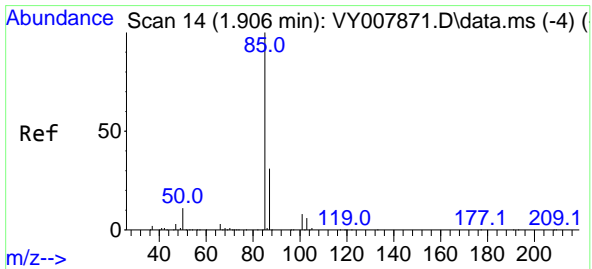
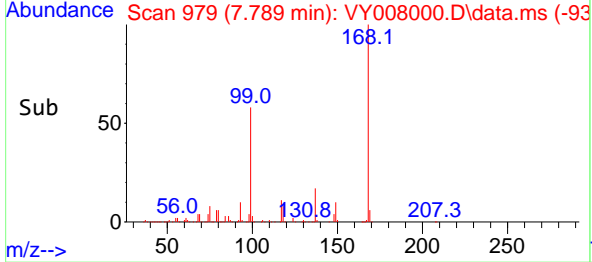
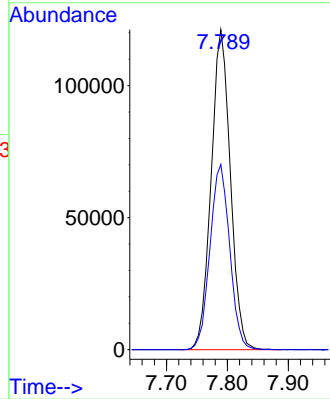


#1
 Pentafluorobenzene
 Concen: 50.000 ug/l
 RT: 7.789 min Scan# 91
 Delta R.T. 0.000 min
 Lab File: VY008000.D
 Acq: 22 Mar 2022 15:08

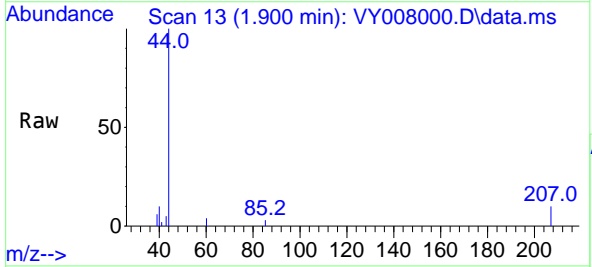
Instrument :
 MSVOA_Y
 ClientSampleId :
 VIBLK



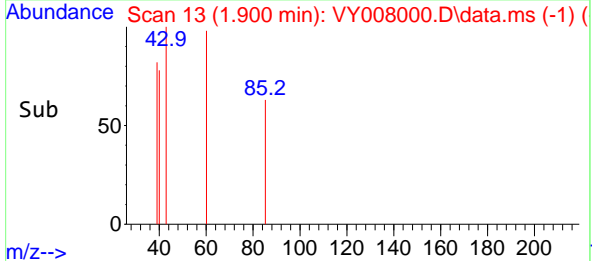
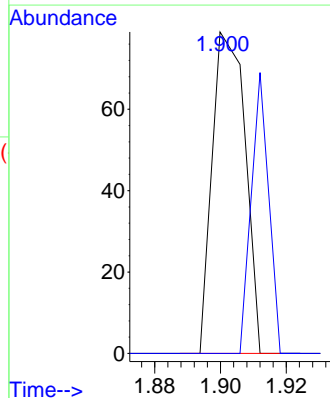
Tgt Ion:168 Resp: 265591
 Ion Ratio Lower Upper
 168 100
 99 57.9 46.9 70.3

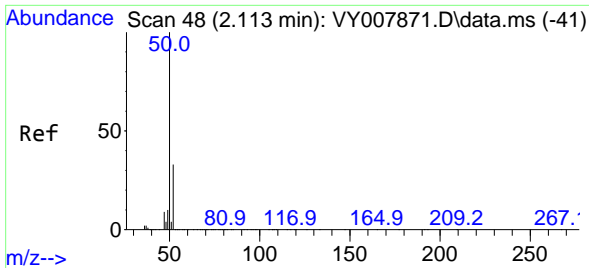


#2
 Dichlorodifluoromethane
 Concen: Below Cal
 RT: 1.900 min Scan# 13
 Delta R.T. -0.006 min
 Lab File: VY008000.D
 Acq: 22 Mar 2022 15:08



Tgt Ion: 85 Resp: 55
 Ion Ratio Lower Upper
 85 100
 87 0.0 16.1 48.2#

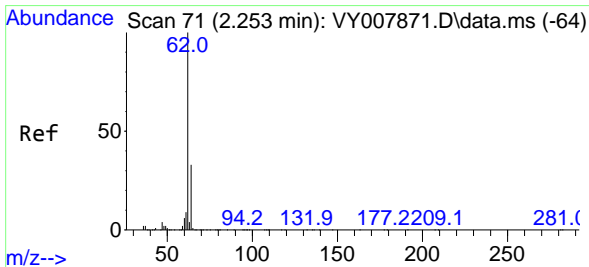
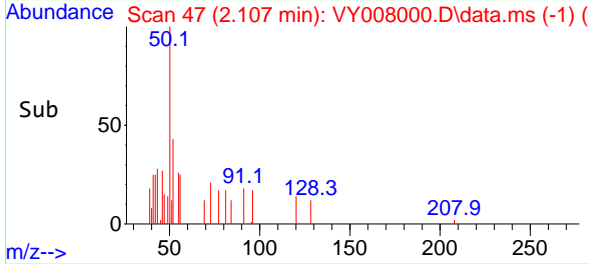
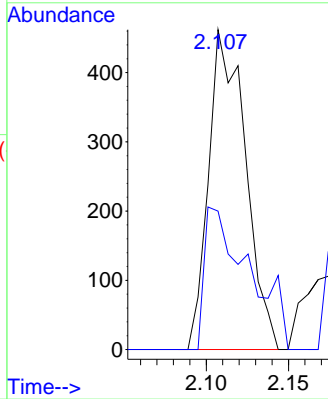
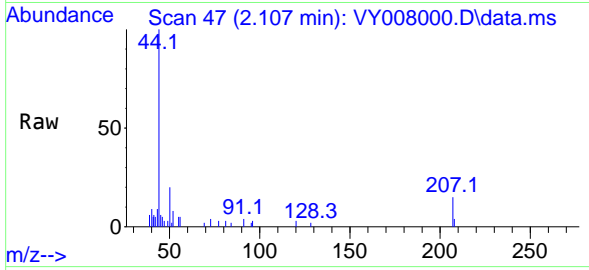




#3
 Chloromethane
 Concen: Below Cal
 RT: 2.107 min Scan# 41
 Delta R.T. -0.006 min
 Lab File: VY008000.D
 Acq: 22 Mar 2022 15:08

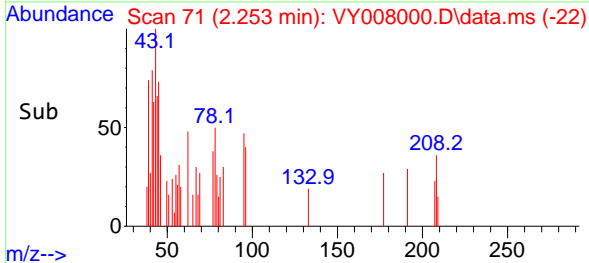
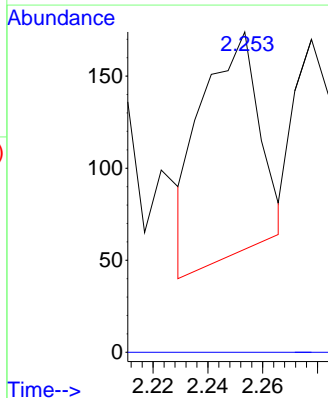
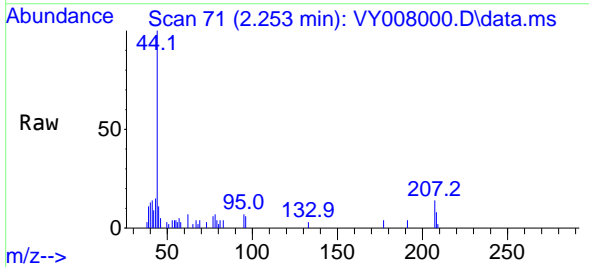
Instrument : MSVOA_Y
 ClientSampleId : VIBLK

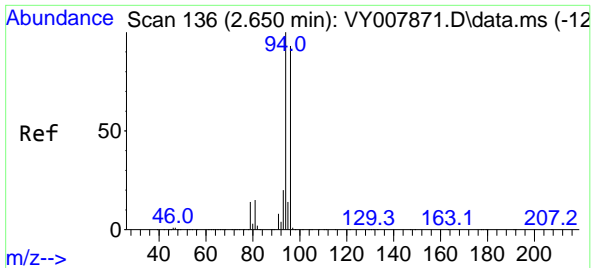
Tgt Ion: 50 Resp: 718
 Ion Ratio Lower Upper
 50 100
 52 43.3 24.6 37.0#



#4
 Vinyl Chloride
 Concen: Below Cal
 RT: 2.253 min Scan# 71
 Delta R.T. -0.000 min
 Lab File: VY008000.D
 Acq: 22 Mar 2022 15:08

Tgt Ion: 62 Resp: 179
 Ion Ratio Lower Upper
 62 100
 64 0.0 25.0 37.6#

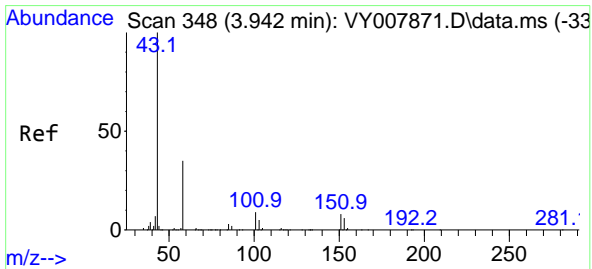
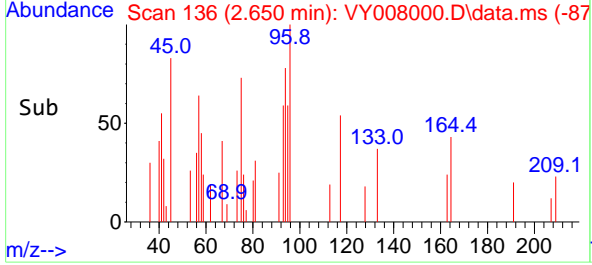
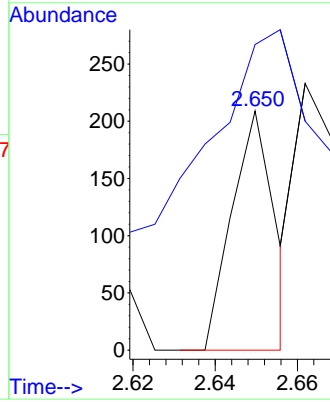
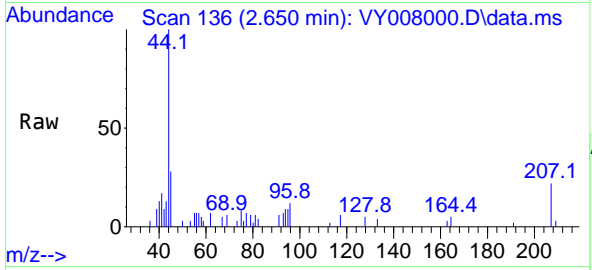




#5
 Bromomethane
 Concen: Below Cal
 RT: 2.650 min Scan# 11
 Delta R.T. 0.000 min
 Lab File: VY008000.D
 Acq: 22 Mar 2022 15:08

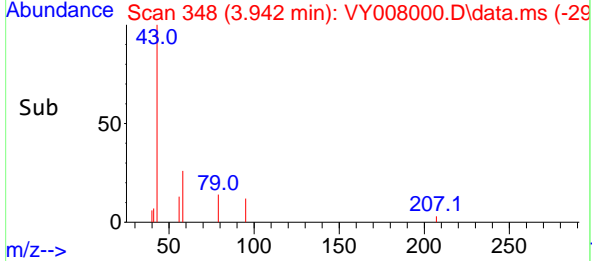
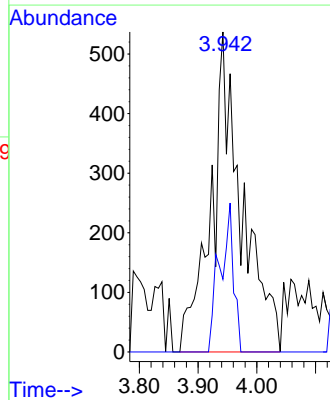
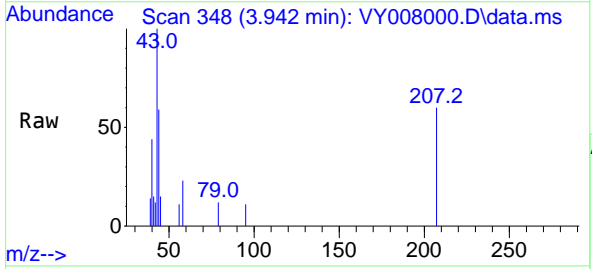
Instrument :
 MSVOA_Y
 ClientSampleId :
 VIBLK

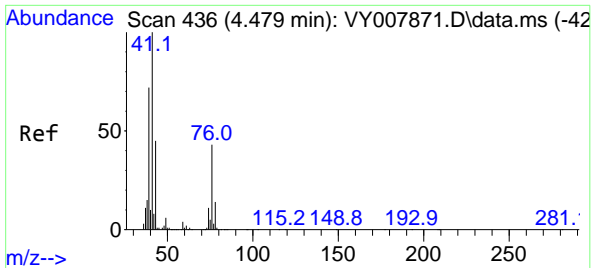
Tgt Ion: 94 Resp: 152
 Ion Ratio Lower Upper
 94 100
 96 56.0 73.5 110.3#



#16
 Acetone
 Concen: 2.421 ug/l
 RT: 3.942 min Scan# 348
 Delta R.T. 0.000 min
 Lab File: VY008000.D
 Acq: 22 Mar 2022 15:08

Tgt Ion: 43 Resp: 1945
 Ion Ratio Lower Upper
 43 100
 58 22.7 22.0 33.0

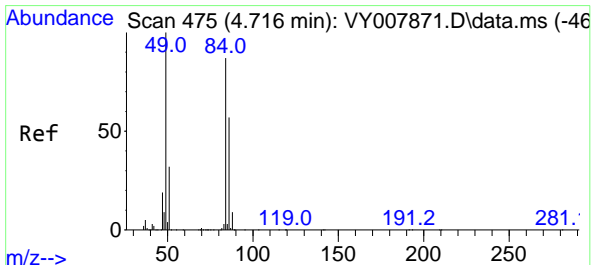
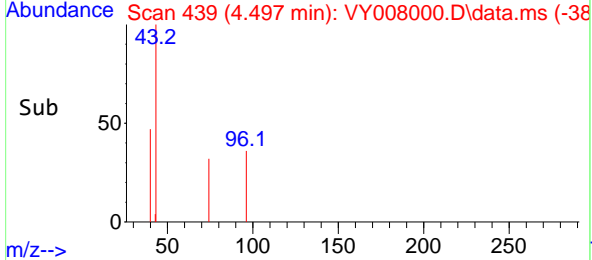
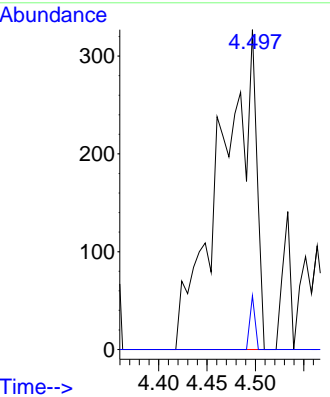
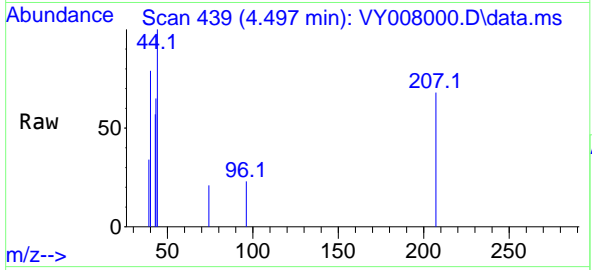




#18
 Methyl Acetate
 Concen: Below Cal
 RT: 4.497 min Scan# 41
 Delta R.T. 0.024 min
 Lab File: VY008000.D
 Acq: 22 Mar 2022 15:08

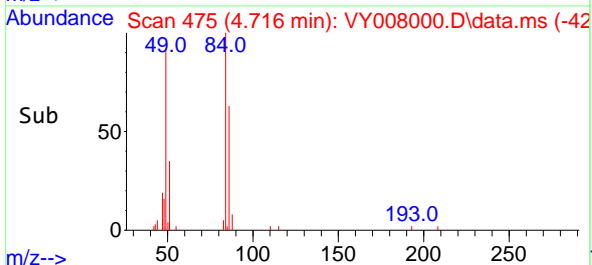
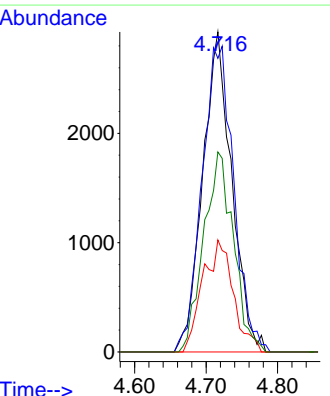
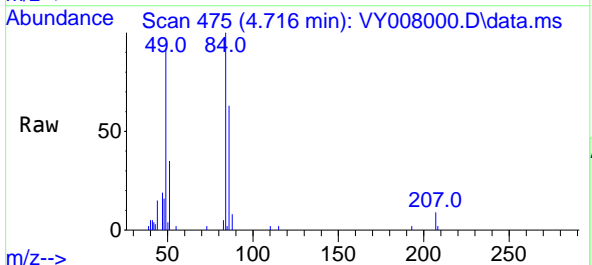
Instrument : MSVOA_Y
 ClientSampleId : VIBLK

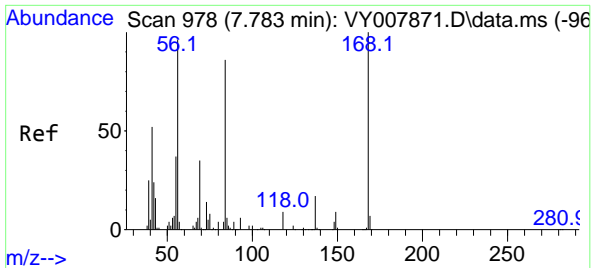
Tgt Ion: 43 Resp: 843
 Ion Ratio Lower Upper
 43 100
 74 2.4 16.6 24.8#



#20
 Methylene Chloride
 Concen: Below Cal
 RT: 4.716 min Scan# 475
 Delta R.T. 0.000 min
 Lab File: VY008000.D
 Acq: 22 Mar 2022 15:08

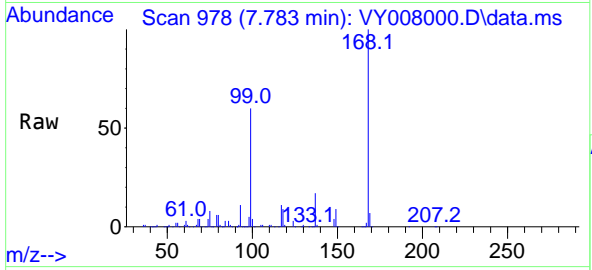
Tgt Ion: 84 Resp: 8258
 Ion Ratio Lower Upper
 84 100
 49 91.7 114.4 171.6#
 51 35.0 35.3 52.9#
 86 62.5 53.7 80.5



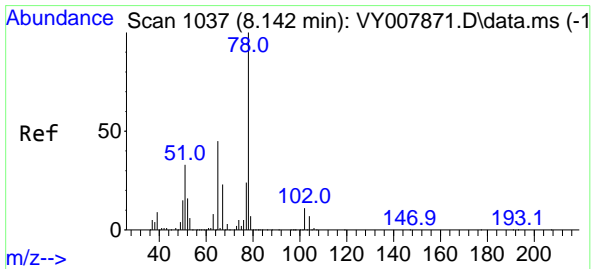
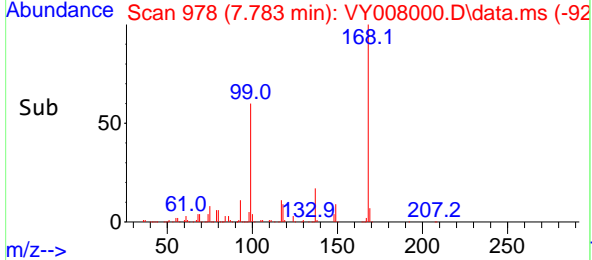
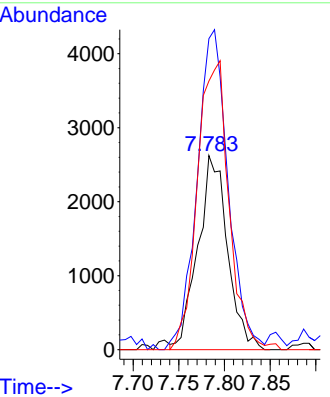


#31
 Cyclohexane
 Concen: Below Cal
 RT: 7.783 min Scan# 91
 Delta R.T. 0.000 min
 Lab File: VY008000.D
 Acq: 22 Mar 2022 15:08

Instrument : MSVOA_Y
 ClientSampleId : VIBLK

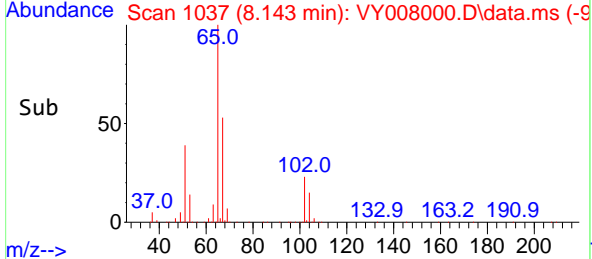
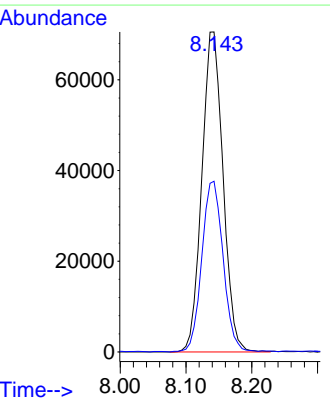
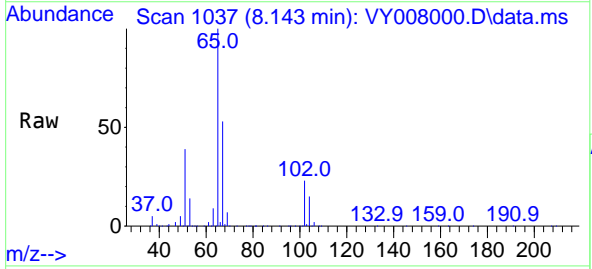


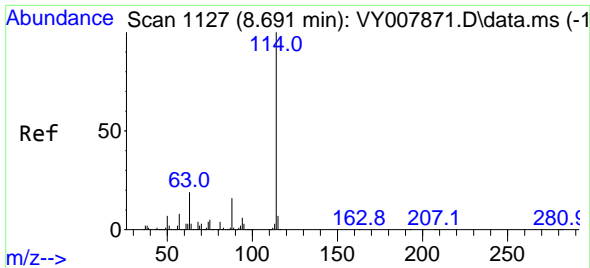
Tgt Ion: 56 Resp: 5921
 Ion Ratio Lower Upper
 56 100
 69 156.2 26.7 40.1#
 84 138.4 67.2 100.8#



#33
 1,2-Dichloroethane-d4
 Concen: 52.281 ug/l
 RT: 8.143 min Scan# 1037
 Delta R.T. 0.006 min
 Lab File: VY008000.D
 Acq: 22 Mar 2022 15:08

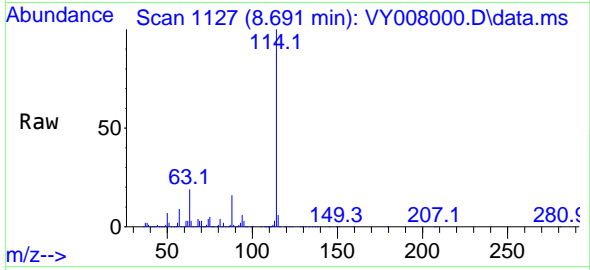
Tgt Ion: 65 Resp: 158319
 Ion Ratio Lower Upper
 65 100
 67 53.6 0.0 99.4



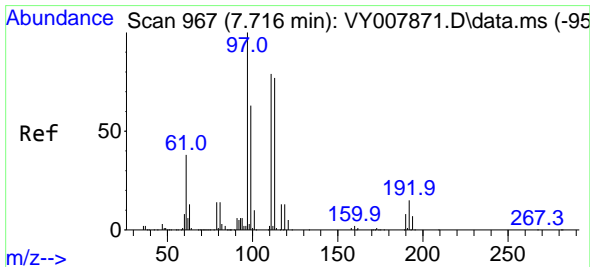
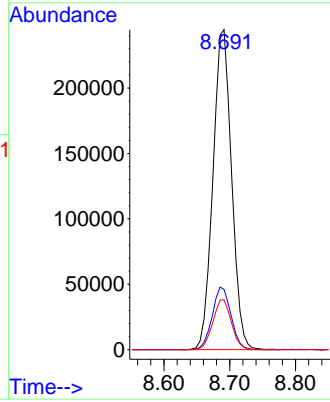
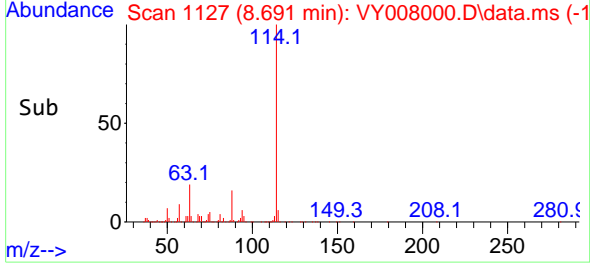


#34
 1,4-Difluorobenzene
 Concen: 50.000 ug/l
 RT: 8.691 min Scan# 1127
 Delta R.T. -0.000 min
 Lab File: VY008000.D
 Acq: 22 Mar 2022 15:08

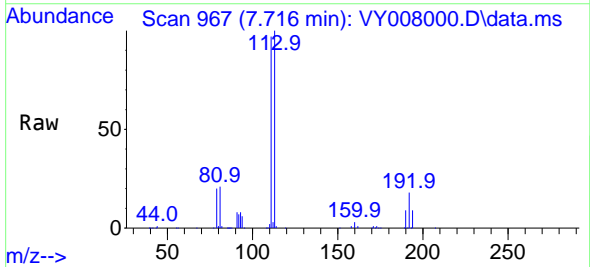
Instrument : MSVOA_Y
 ClientSampleId : VIBLK



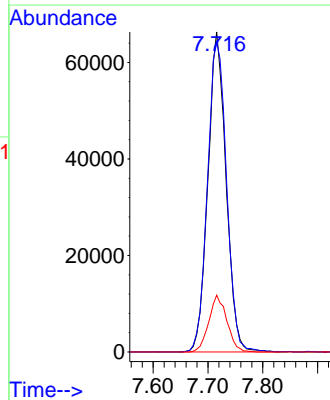
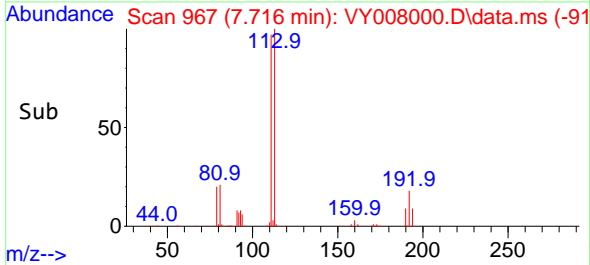
Tgt Ion:114 Resp: 482561
 Ion Ratio Lower Upper
 114 100
 63 18.9 0.0 43.2
 88 15.6 0.0 31.8

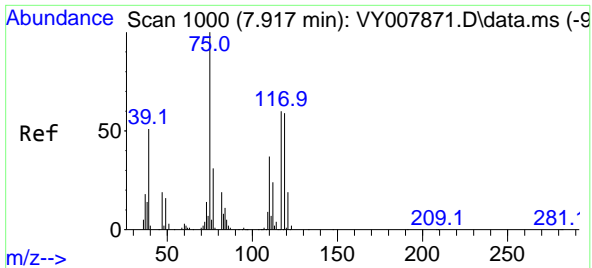


#35
 Dibromofluoromethane
 Concen: 44.838 ug/l
 RT: 7.716 min Scan# 967
 Delta R.T. -0.000 min
 Lab File: VY008000.D
 Acq: 22 Mar 2022 15:08



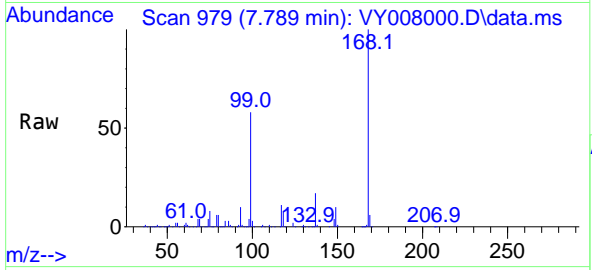
Tgt Ion:113 Resp: 151956
 Ion Ratio Lower Upper
 113 100
 111 102.4 82.6 124.0
 192 17.7 17.6 26.4





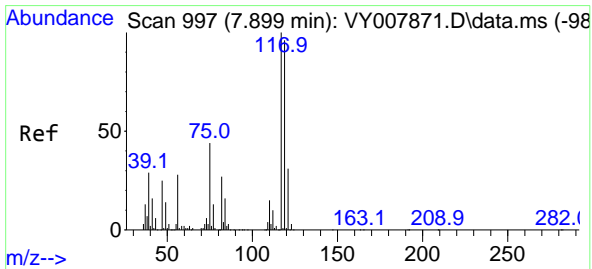
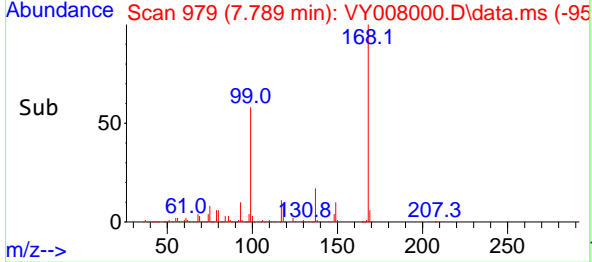
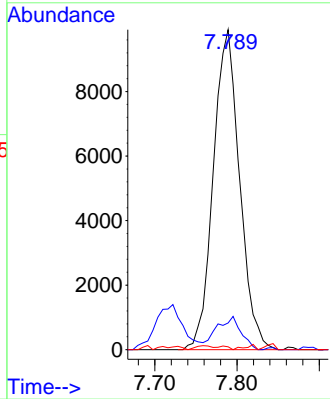
#36
 1,1-Dichloropropene
 Concen: 4.387 ug/l
 RT: 7.789 min Scan# 91
 Delta R.T. -0.128 min
 Lab File: VY008000.D
 Acq: 22 Mar 2022 15:08

Instrument :
 MSVOA_Y
 ClientSampleId :
 VIBLK



Tgt Ion: 75 Resp: 22050

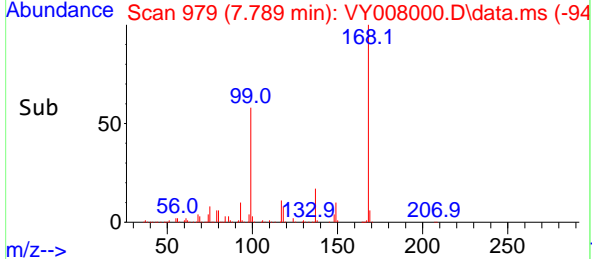
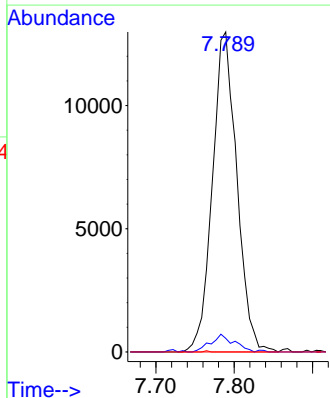
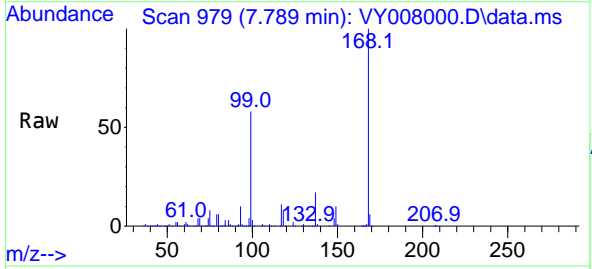
Ion	Ratio	Lower	Upper
75	100		
110	9.6	17.1	51.2#
77	0.0	24.4	36.6#

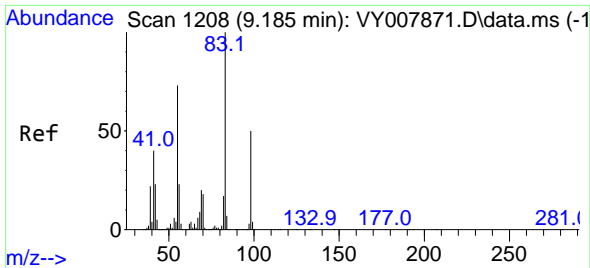


#38
 Carbon Tetrachloride
 Concen: 5.244 ug/l
 RT: 7.789 min Scan# 979
 Delta R.T. -0.110 min
 Lab File: VY008000.D
 Acq: 22 Mar 2022 15:08

Tgt Ion: 117 Resp: 28169

Ion	Ratio	Lower	Upper
117	100		
119	4.2	77.9	116.9#
121	0.0	24.8	37.2#



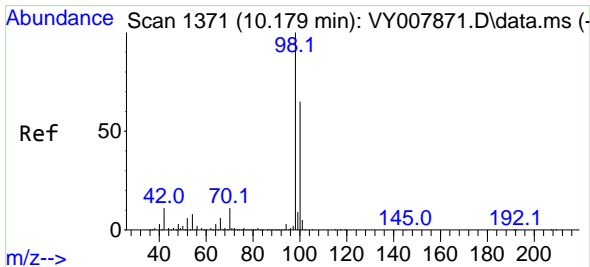
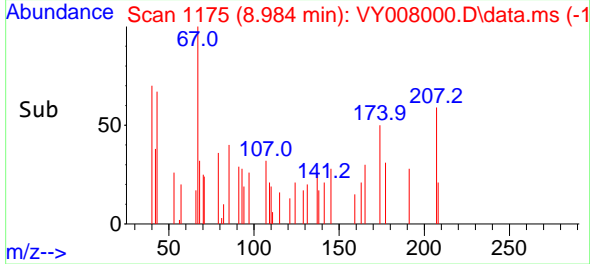
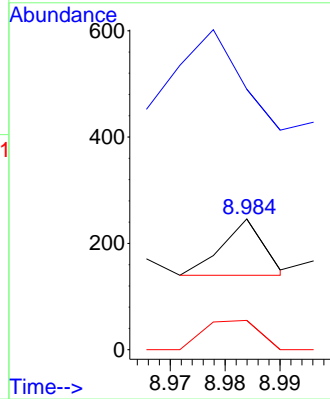
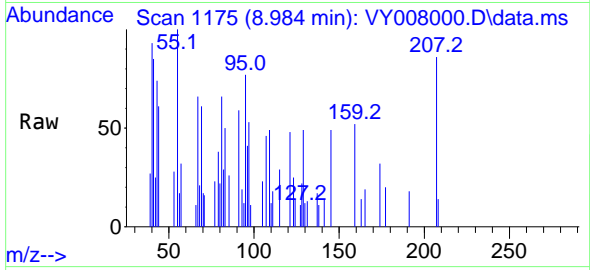


#39
 Methylcyclohexane
 Concen: Below Cal
 RT: 8.984 min Scan# 11175
 Delta R.T. -0.201 min
 Lab File: VY008000.D
 Acq: 22 Mar 2022 15:08

Instrument :
 MSVOA_Y
 ClientSampleId :
 VIBLK

Tgt Ion: 83 Resp: 56

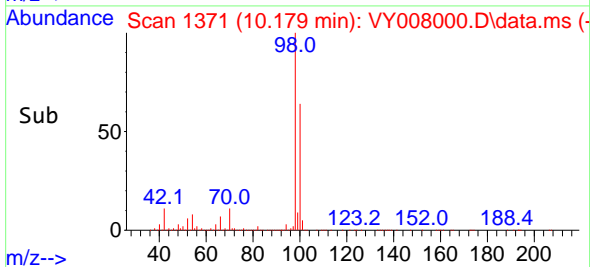
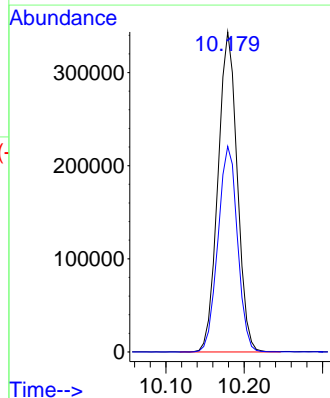
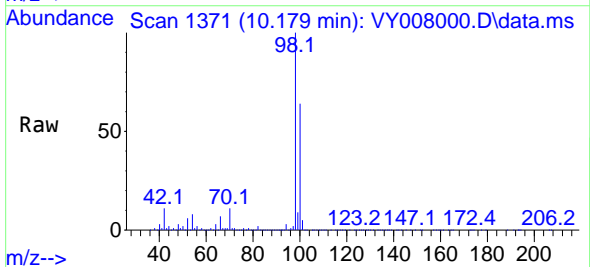
Ion	Ratio	Lower	Upper
83	100		
55	72.6	66.5	99.7
98	51.9	37.9	56.9

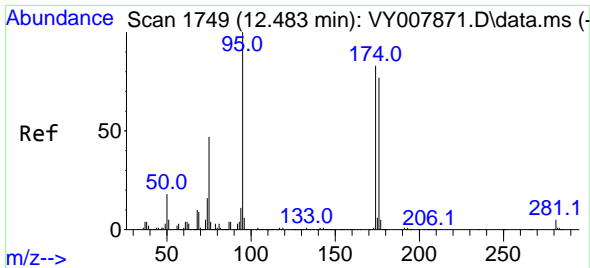


#50
 Toluene-d8
 Concen: 58.375 ug/l
 RT: 10.179 min Scan# 1371
 Delta R.T. 0.000 min
 Lab File: VY008000.D
 Acq: 22 Mar 2022 15:08

Tgt Ion: 98 Resp: 587280

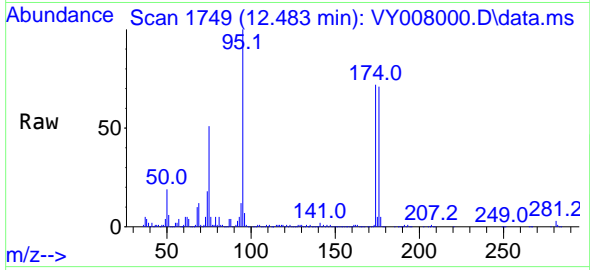
Ion	Ratio	Lower	Upper
98	100		
100	65.1	50.2	75.2



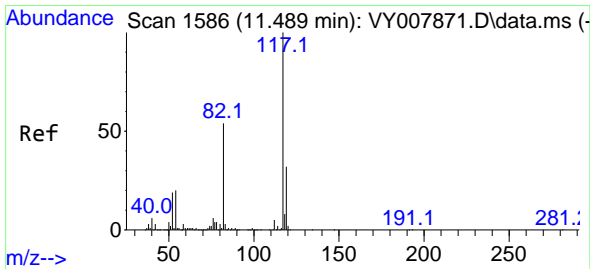
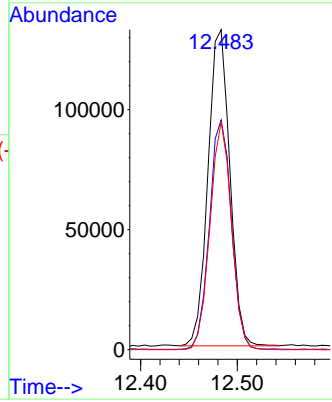
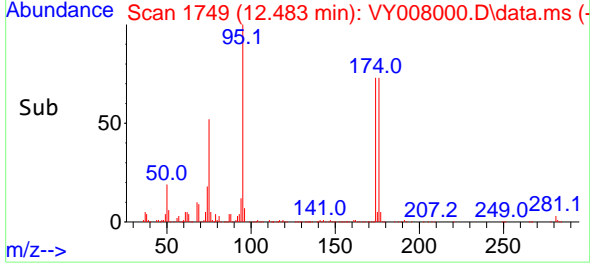


#62
 4-Bromofluorobenzene
 Concen: 42.615 ug/l
 RT: 12.483 min Scan# 11
 Delta R.T. 0.000 min
 Lab File: VY008000.D
 Acq: 22 Mar 2022 15:08

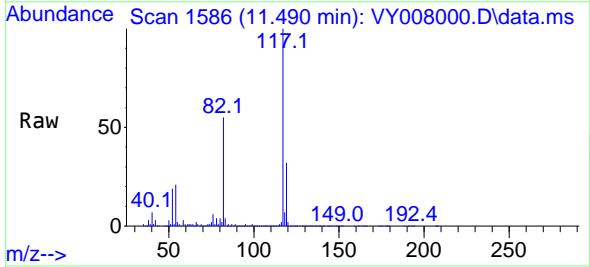
Instrument :
 MSVOA_Y
 ClientSampleId :
 VIBLK



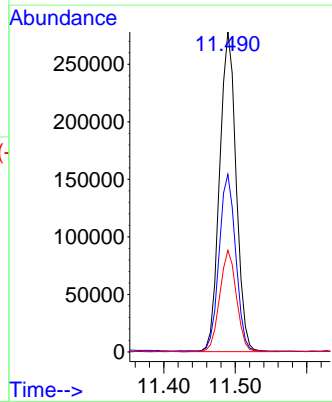
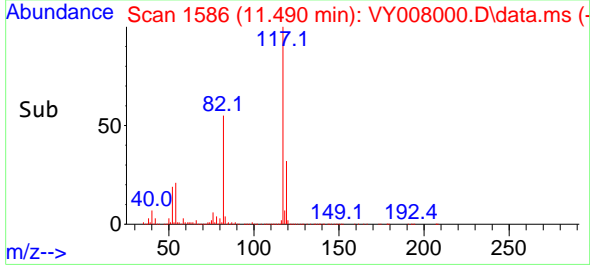
Tgt Ion: 95 Resp: 207272
 Ion Ratio Lower Upper
 95 100
 174 73.1 0.0 177.0
 176 70.4 0.0 175.8

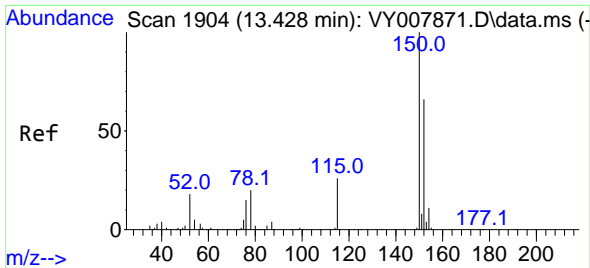


#63
 Chlorobenzene-d5
 Concen: 50.000 ug/l
 RT: 11.490 min Scan# 1586
 Delta R.T. 0.000 min
 Lab File: VY008000.D
 Acq: 22 Mar 2022 15:08



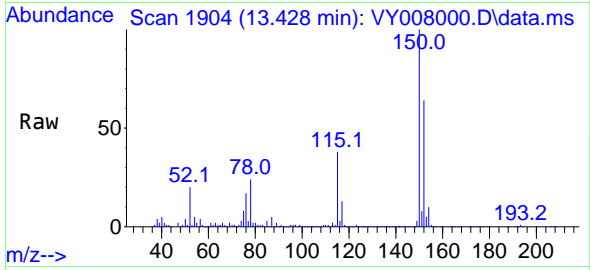
Tgt Ion: 117 Resp: 446102
 Ion Ratio Lower Upper
 117 100
 82 55.3 43.0 64.4
 119 31.7 25.4 38.0



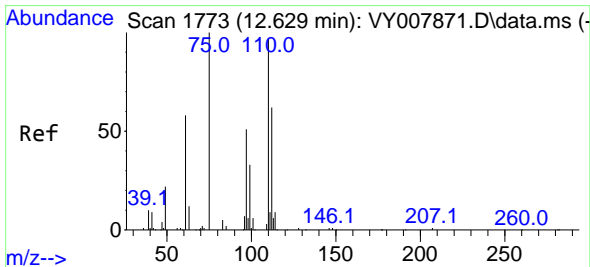
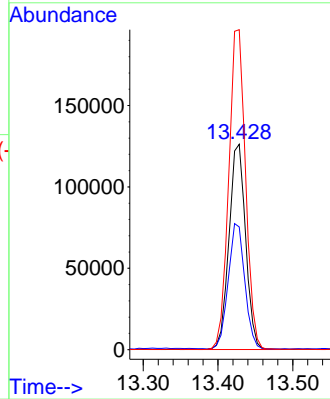
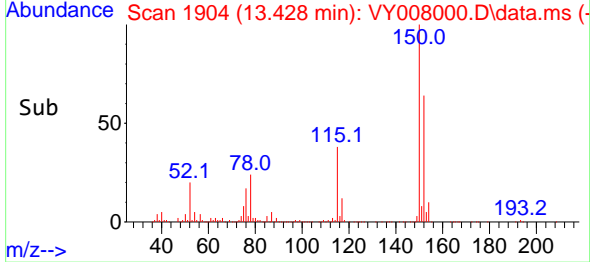


#72
 1,4-Dichlorobenzene-d4
 Concen: 50.000 ug/l
 RT: 13.428 min Scan# 1904
 Delta R.T. 0.000 min
 Lab File: VY008000.D
 Acq: 22 Mar 2022 15:08

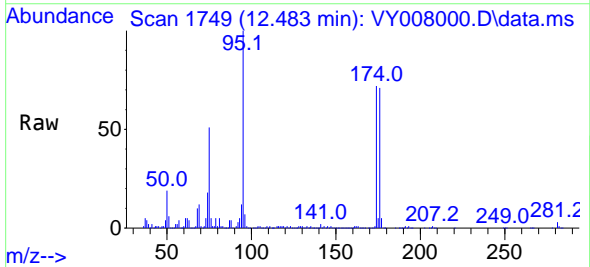
Instrument : MSVOA_Y
 ClientSampleId : VIBLK



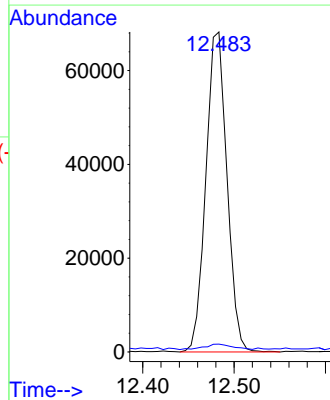
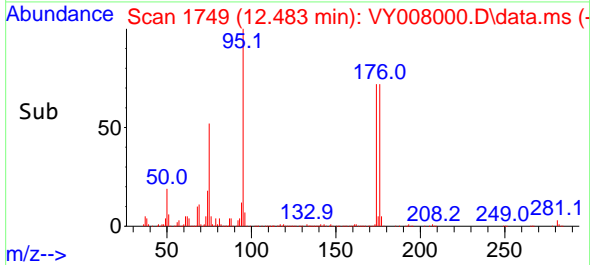
Tgt Ion:152 Resp: 195285
 Ion Ratio Lower Upper
 152 100
 115 61.0 28.2 84.7
 150 157.6 0.0 347.6

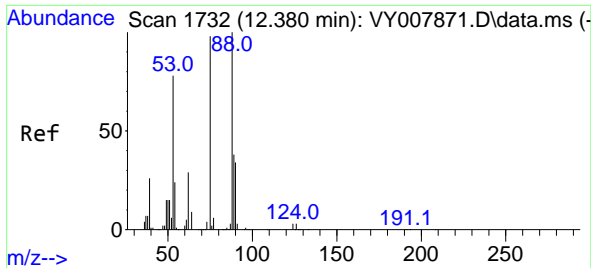


#76
 1,2,3-Trichloropropane
 Concen: 39.255 ug/l
 RT: 12.483 min Scan# 1749
 Delta R.T. -0.152 min
 Lab File: VY008000.D
 Acq: 22 Mar 2022 15:08



Tgt Ion: 75 Resp: 109266
 Ion Ratio Lower Upper
 75 100
 77 2.3 0.0 0.0#





#81
 trans-1,4-Dichloro-2-butene
 Concen: 82.452 ug/l
 RT: 12.483 min Scan# 11
 Delta R.T. 0.104 min
 Lab File: VY008000.D
 Acq: 22 Mar 2022 15:08

Instrument :
 MSVOA_Y
 ClientSampleId :
 VIBLK

Tgt Ion: 75 Resp: 109266
 Ion Ratio Lower Upper
 75 100
 53 0.3 85.3 127.9#
 89 0.8 37.0 55.4#

