

Data Path : Z:\voasrv\HPCHEM1\MSVOA\_Y\Data\VY032625\  
 Data File : VY021648.D  
 Acq On : 26 Mar 2025 15:47  
 Operator : SY/MD  
 Sample : Q1637-03  
 Misc : 5.04g/5.0mL/MSVOA\_Y/SOIL/A  
 ALS Vial : 8 Sample Multiplier: 1

Instrument :  
 MSVOA\_Y  
 ClientSampleId :  
 EO-02-032525

Quant Time: Mar 27 01:32:25 2025  
 Quant Method : Z:\voasrv\HPCHEM1\MSVOA\_Y\methods\82Y030425S.M  
 Quant Title : SW846 8260  
 QLast Update : Wed Mar 05 12:42:45 2025  
 Response via : Initial Calibration

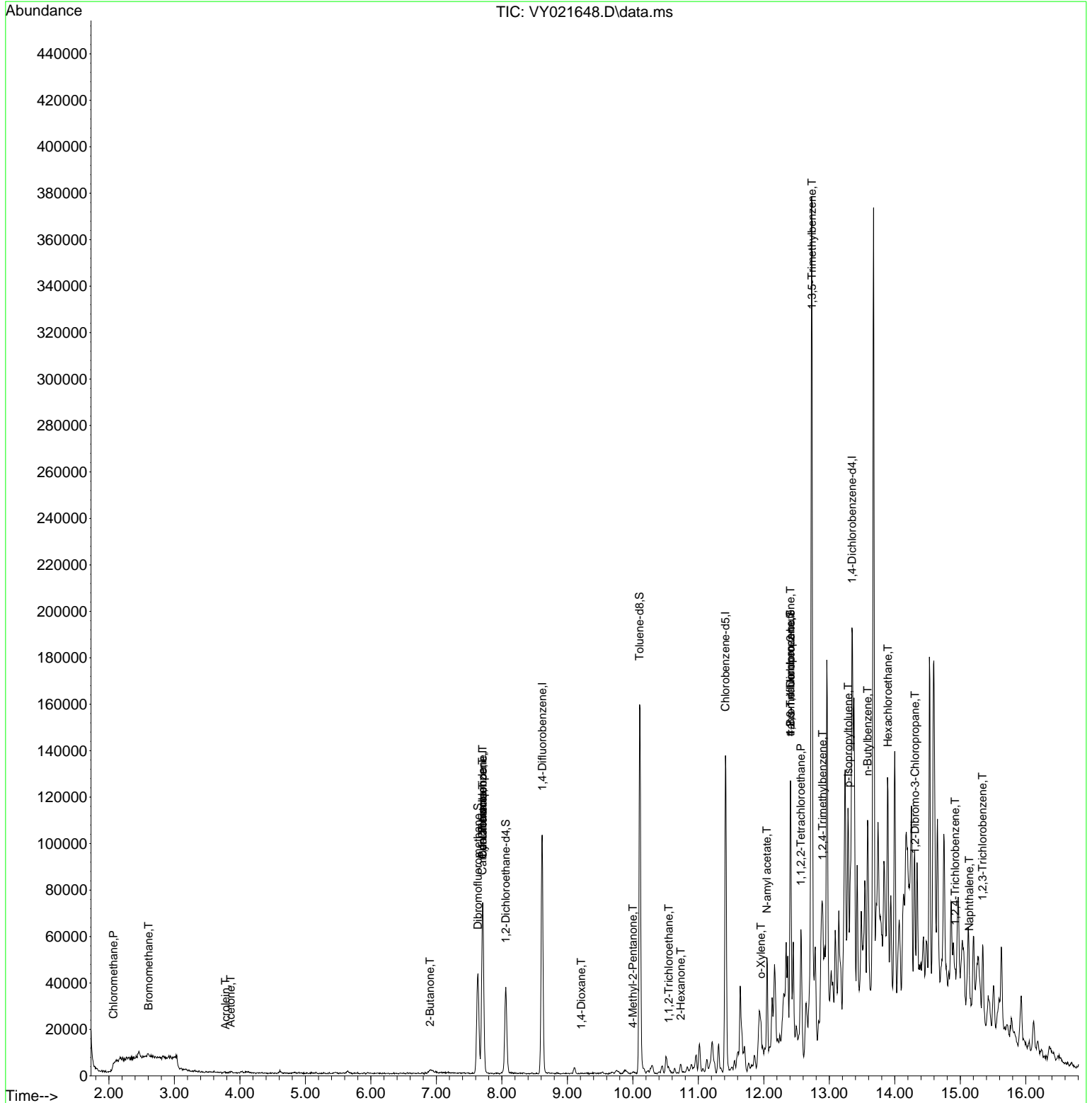
Compound	R.T.	QIon	Response	Conc	Units	Dev(Min)
-----						
Internal Standards						
1) Pentafluorobenzene	7.707	168	53776	50.000	ug/l	0.00
34) 1,4-Difluorobenzene	8.616	114	84723	50.000	ug/l	0.00
63) Chlorobenzene-d5	11.414	117	73211	50.000	ug/l	0.00
72) 1,4-Dichlorobenzene-d4	13.347	152	28659	50.000	ug/l	0.00
System Monitoring Compounds						
33) 1,2-Dichloroethane-d4	8.061	65	28192	49.601	ug/l	0.00
Spiked Amount	50.000		Recovery	=	99.200%	
35) Dibromofluoromethane	7.634	113	30838	55.375	ug/l	0.00
Spiked Amount	50.000		Recovery	=	110.740%	
50) Toluene-d8	10.103	98	101262	48.024	ug/l	0.00
Spiked Amount	50.000		Recovery	=	96.040%	
62) 4-Bromofluorobenzene	12.408	95	31422	43.809	ug/l	0.00
Spiked Amount	50.000		Recovery	=	87.620%	
Target Compounds						
						Qvalue
3) Chloromethane	2.068	50	851	1.223	ug/l #	85
5) Bromomethane	2.605	94	979	1.782	ug/l #	71
11) Tert butyl alcohol	4.842	59	368	Below Cal	#	72
13) Acrolein	3.781	56	52	1.799	ug/l #	78
16) Acetone	3.860	43	844	6.808	ug/l #	52
25) 2-Butanone	6.903	43	403	2.350	ug/l #	48
31) Cyclohexane	7.707	56	1434	1.347	ug/l #	39
36) 1,1-Dichloropropene	7.707	75	5078	5.825	ug/l #	46
38) Carbon Tetrachloride	7.701	117	5679	5.665	ug/l #	19
49) 1,4-Dioxane	9.213	88	42	12.583	ug/l #	22
51) 4-Methyl-2-Pentanone	10.000	43	456	1.182	ug/l	89
55) 1,1,2-Trichloroethane	10.548	97	1152	2.590	ug/l #	14
59) 2-Hexanone	10.731	43	1817	7.121	ug/l #	24
69) o-Xylene	11.957	106	2950	2.778	ug/l	97
74) N-amyl acetate	12.048	43	7417	15.128	ug/l #	77
75) 1,1,2,2-Tetrachloroethane	12.566	83	4091	10.269	ug/l #	26
76) 1,2,3-Trichloropropane	12.408	75	17125	59.299	ug/l #	100
80) 1,3,5-Trimethylbenzene	12.737	105	27923	15.220	ug/l	99
81) trans-1,4-Dichloro-2-b...	12.408	75	17125	134.804	ug/l #	10
84) 1,2,4-Trimethylbenzene	12.895	105	29205	16.033	ug/l	77
86) p-Isopropyltoluene	13.292	119	10489	5.228	ug/l	99
89) n-Butylbenzene	13.584	91	9405	5.077	ug/l #	1
90) Hexachloroethane	13.895	117	3365	7.863	ug/l #	14
92) 1,2-Dibromo-3-Chloropr...	14.310	75	288	4.826	ug/l #	6
93) 1,2,4-Trichlorobenzene	14.919	180	811	1.648	ug/l #	1
95) Naphthalene	15.139	128	1634	3.546	ug/l #	48
96) 1,2,3-Trichlorobenzene	15.340	180	887	2.143	ug/l #	84

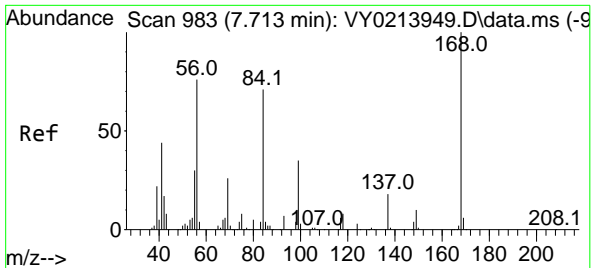
(#) = qualifier out of range (m) = manual integration (+) = signals summed

Data Path : Z:\voasrv\HPCHEM1\MSVOA\_Y\Data\VY032625\  
 Data File : VY021648.D  
 Acq On : 26 Mar 2025 15:47  
 Operator : SY/MD  
 Sample : Q1637-03  
 Misc : 5.04g/5.0mL/MSVOA\_Y/SOIL/A  
 ALS Vial : 8 Sample Multiplier: 1

**Instrument :**  
 MSVOA\_Y  
**ClientSampleId :**  
 EO-02-032525

Quant Time: Mar 27 01:32:25 2025  
 Quant Method : Z:\voasrv\HPCHEM1\MSVOA\_Y\methods\82Y030425S.M  
 Quant Title : SW846 8260  
 QLast Update : Wed Mar 05 12:42:45 2025  
 Response via : Initial Calibration

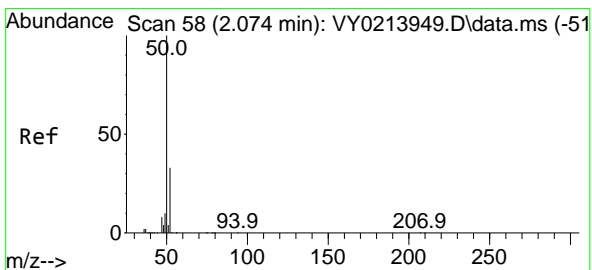
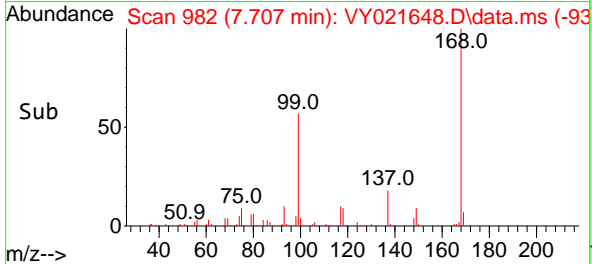
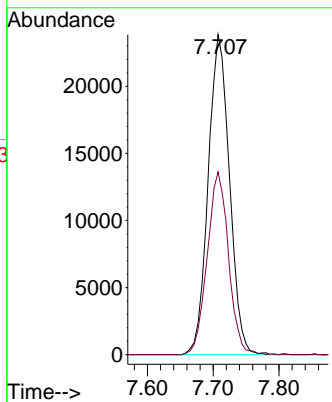
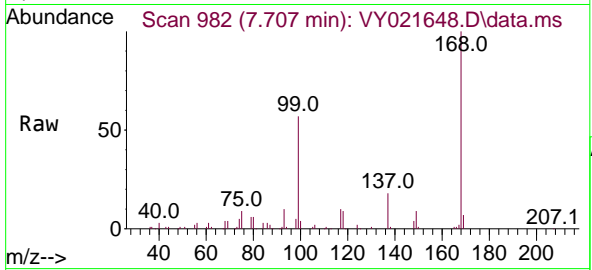




#1  
 Pentafluorobenzene  
 Concen: 50.000 ug/l  
 RT: 7.707 min Scan# 99  
 Delta R.T. -0.006 min  
 Lab File: VY021648.D  
 Acq: 26 Mar 2025 15:47

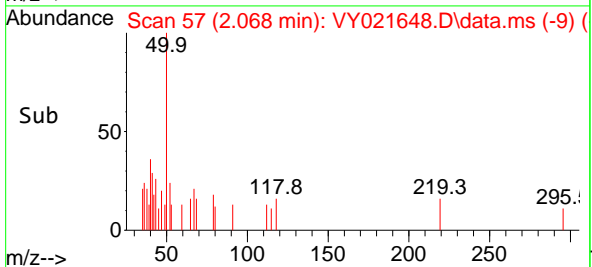
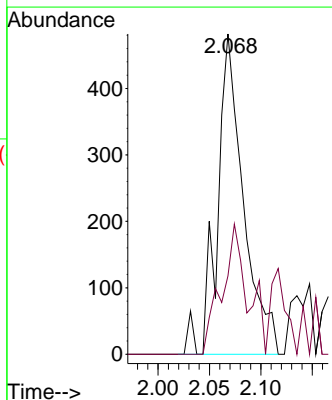
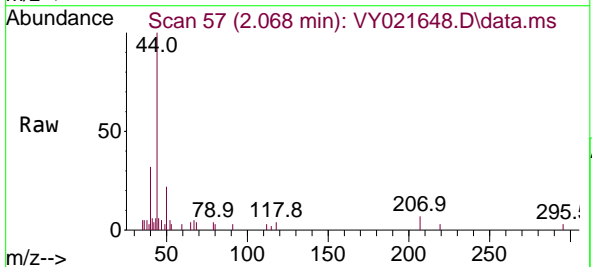
Instrument : MSVOA\_Y  
 ClientSampleId : EO-02-032525

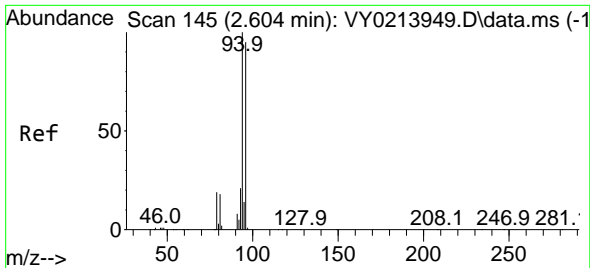
Tgt Ion:168 Resp: 53776  
 Ion Ratio Lower Upper  
 168 100  
 99 57.1 46.0 69.0



#3  
 Chloromethane  
 Concen: 1.223 ug/l  
 RT: 2.068 min Scan# 57  
 Delta R.T. -0.006 min  
 Lab File: VY021648.D  
 Acq: 26 Mar 2025 15:47

Tgt Ion: 50 Resp: 851  
 Ion Ratio Lower Upper  
 50 100  
 52 24.5 26.2 39.2#

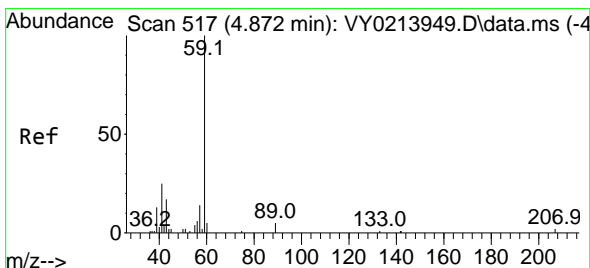
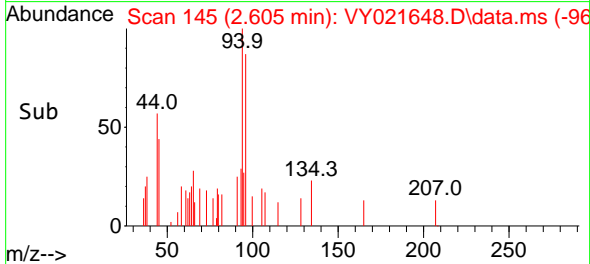
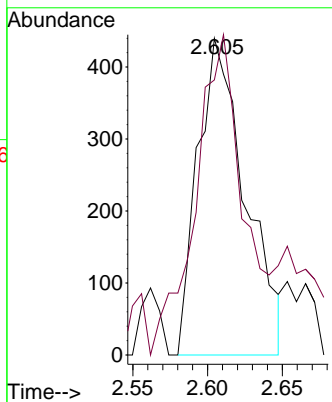
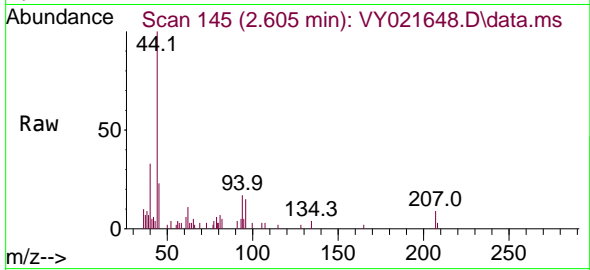




#5  
 Bromomethane  
 Concen: 1.782 ug/l  
 RT: 2.605 min Scan# 14  
 Delta R.T. 0.000 min  
 Lab File: VY021648.D  
 Acq: 26 Mar 2025 15:47

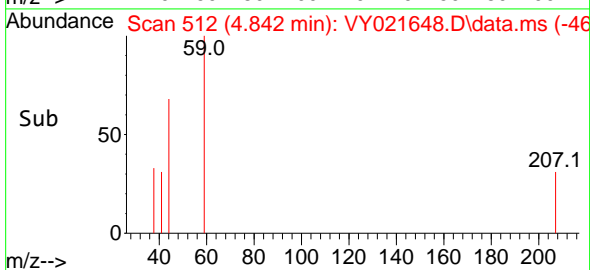
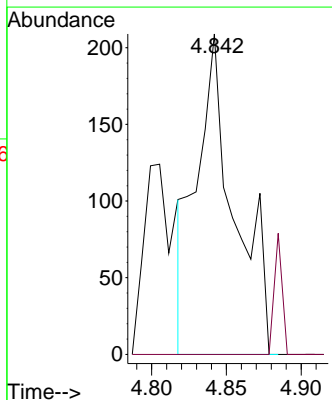
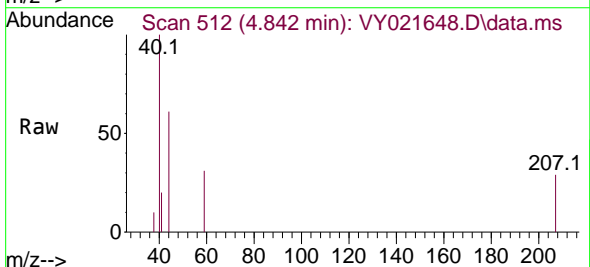
Instrument :  
 MSVOA\_Y  
 ClientSampleId :  
 EO-02-032525

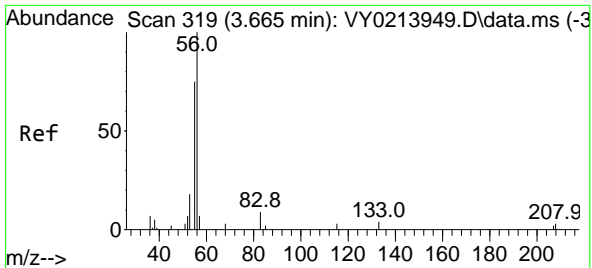
Tgt Ion: 94 Resp: 979  
 Ion Ratio Lower Upper  
 94 100  
 96 67.3 76.3 114.5#



#11  
 Tert butyl alcohol  
 Concen: Below Cal  
 RT: 4.842 min Scan# 512  
 Delta R.T. -0.030 min  
 Lab File: VY021648.D  
 Acq: 26 Mar 2025 15:47

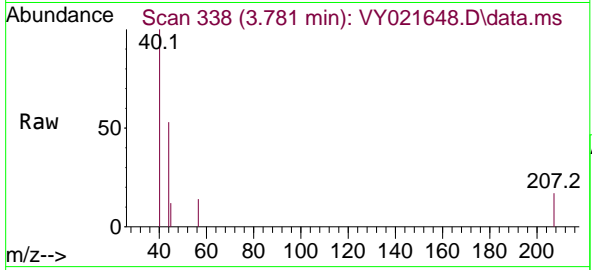
Tgt Ion: 59 Resp: 368  
 Ion Ratio Lower Upper  
 59 100  
 57 0.0 8.2 12.4#



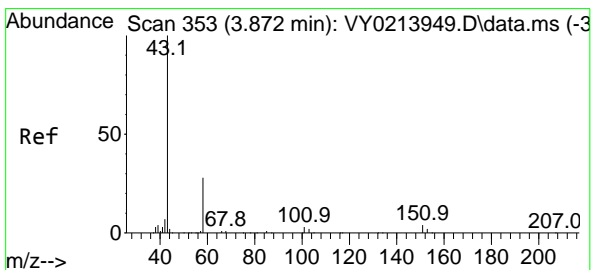
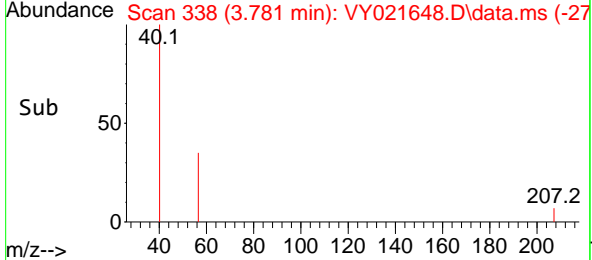
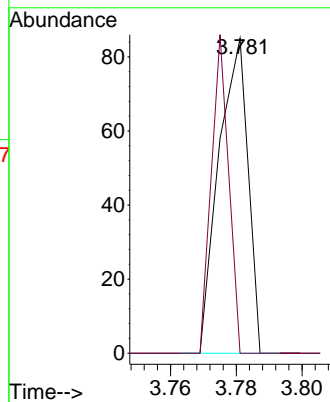


#13  
 Acrolein  
 Concen: 1.799 ug/l  
 RT: 3.781 min Scan# 311  
 Delta R.T. 0.116 min  
 Lab File: VY021648.D  
 Acq: 26 Mar 2025 15:47

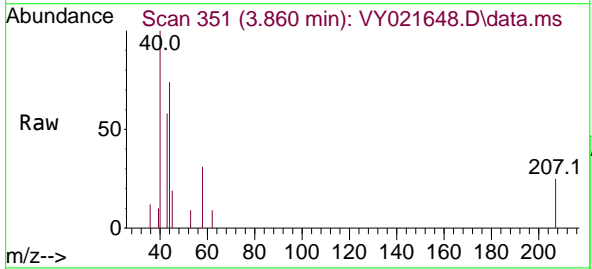
Instrument : MSVOA\_Y  
 ClientSampleId : EO-02-032525



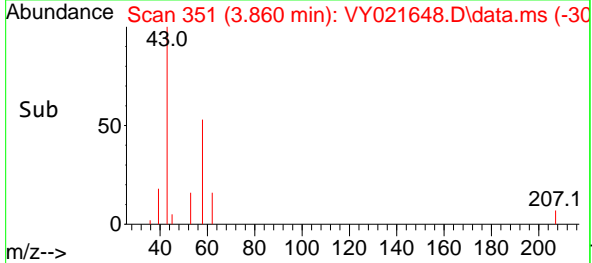
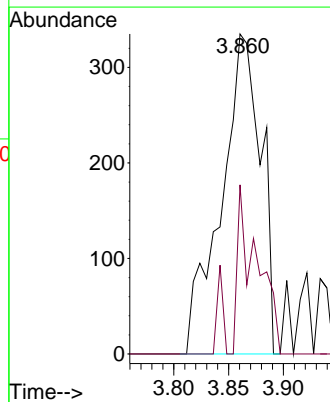
Tgt Ion: 56 Resp: 52  
 Ion Ratio Lower Upper  
 56 100  
 55 59.6 63.4 95.2#

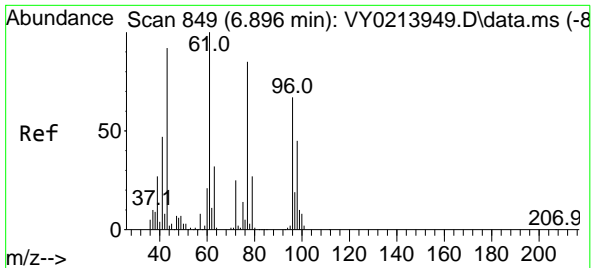


#16  
 Acetone  
 Concen: 6.808 ug/l  
 RT: 3.860 min Scan# 351  
 Delta R.T. -0.012 min  
 Lab File: VY021648.D  
 Acq: 26 Mar 2025 15:47



Tgt Ion: 43 Resp: 844  
 Ion Ratio Lower Upper  
 43 100  
 58 52.8 22.1 33.1#

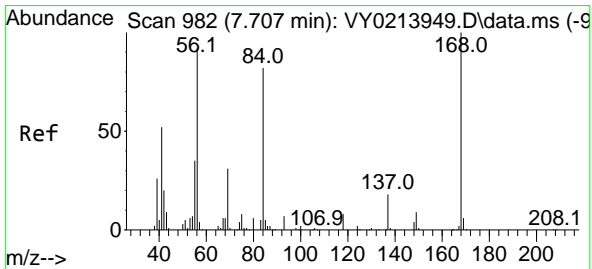
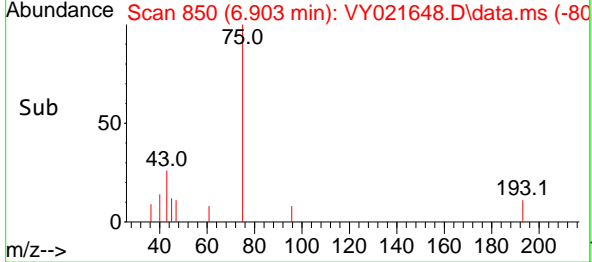
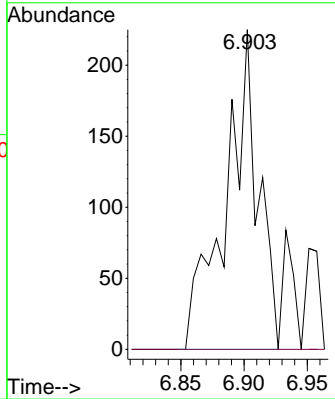
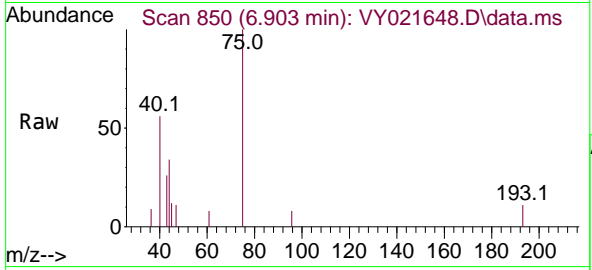




#25  
 2-Butanone  
 Concen: 2.350 ug/l  
 RT: 6.903 min Scan# 81  
 Delta R.T. 0.006 min  
 Lab File: VY021648.D  
 Acq: 26 Mar 2025 15:47

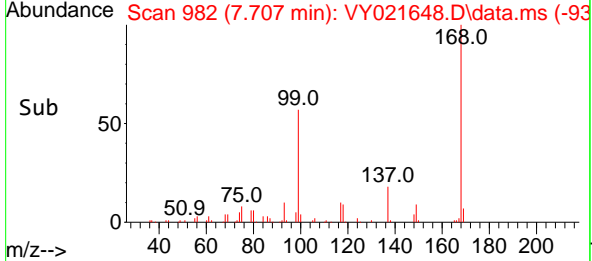
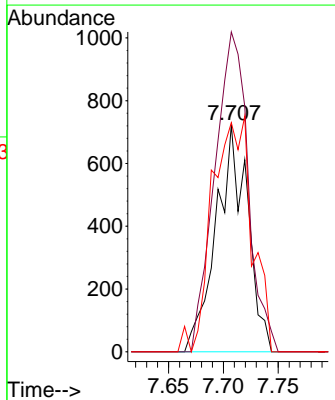
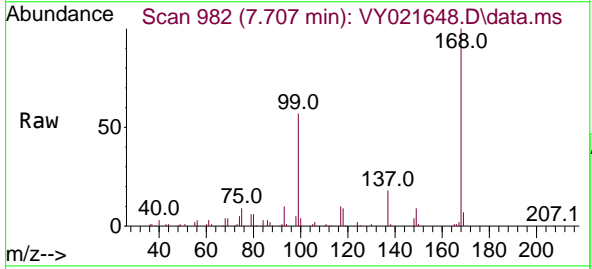
Instrument : MSVOA\_Y  
 ClientSampleId : EO-02-032525

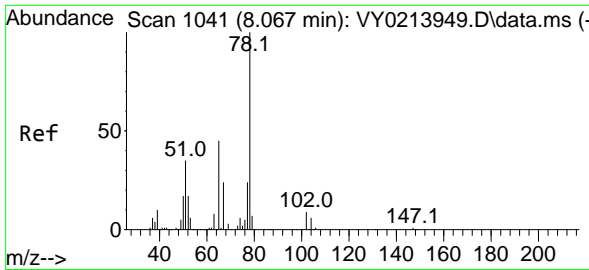
Tgt Ion: 43 Resp: 403  
 Ion Ratio Lower Upper  
 43 100  
 72 0.0 21.4 32.0#



#31  
 Cyclohexane  
 Concen: 1.347 ug/l  
 RT: 7.707 min Scan# 982  
 Delta R.T. 0.000 min  
 Lab File: VY021648.D  
 Acq: 26 Mar 2025 15:47

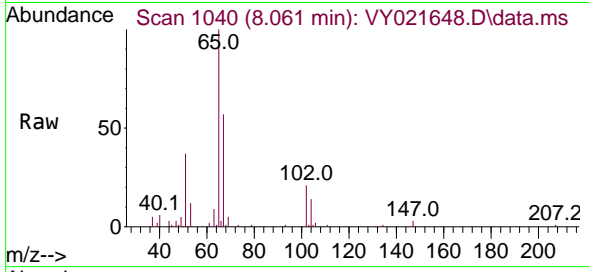
Tgt Ion: 56 Resp: 1434  
 Ion Ratio Lower Upper  
 56 100  
 69 140.7 27.0 40.4#  
 84 100.8 71.1 106.7



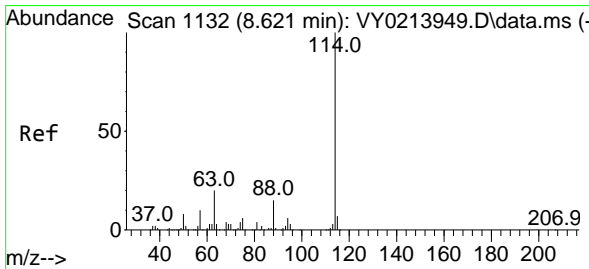
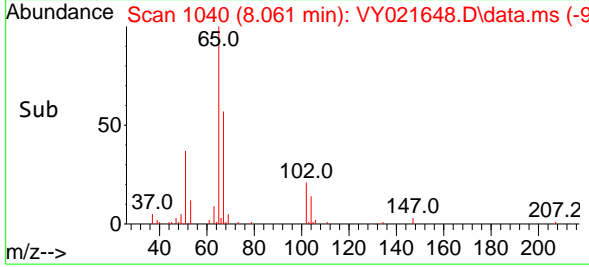
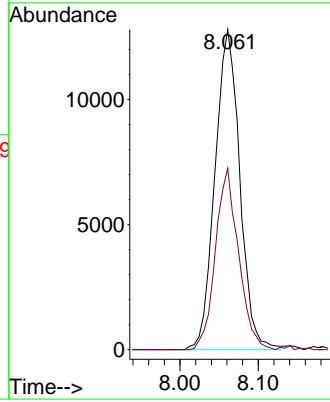


#33  
 1,2-Dichloroethane-d4  
 Concen: 49.601 ug/l  
 RT: 8.061 min Scan# 1040  
 Delta R.T. -0.006 min  
 Lab File: VY021648.D  
 Acq: 26 Mar 2025 15:47

Instrument : MSVOA\_Y  
 ClientSampleId : EO-02-032525

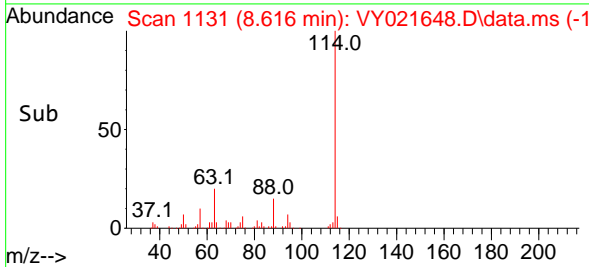
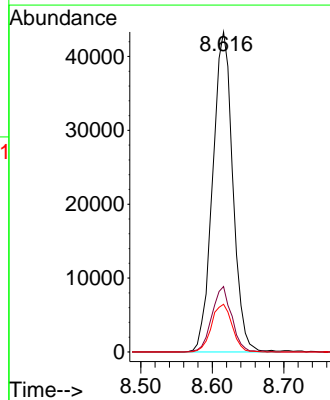
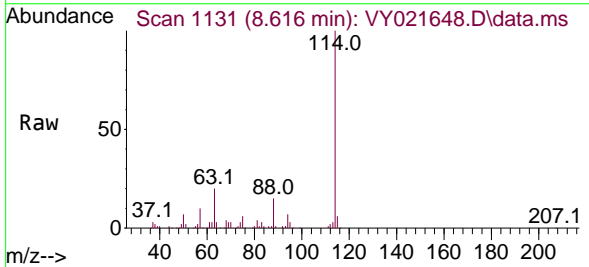


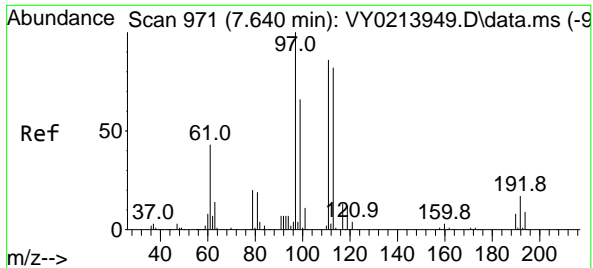
Tgt Ion: 65 Resp: 28192  
 Ion Ratio Lower Upper  
 65 100  
 67 52.9 0.0 102.8



#34  
 1,4-Difluorobenzene  
 Concen: 50.000 ug/l  
 RT: 8.616 min Scan# 1131  
 Delta R.T. -0.006 min  
 Lab File: VY021648.D  
 Acq: 26 Mar 2025 15:47

Tgt Ion: 114 Resp: 84723  
 Ion Ratio Lower Upper  
 114 100  
 63 20.4 0.0 40.8  
 88 14.9 0.0 30.8

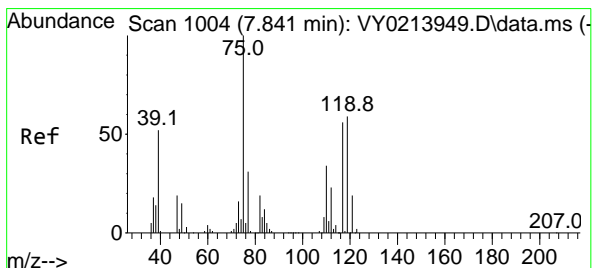
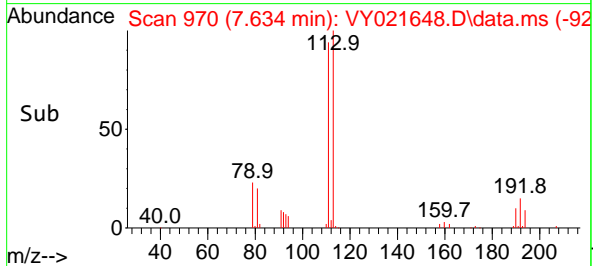
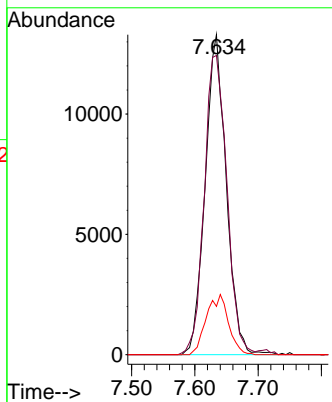
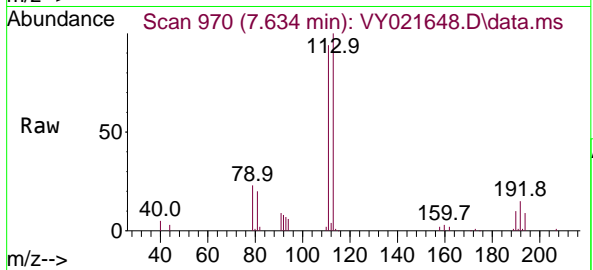




#35  
 Dibromofluoromethane  
 Concen: 55.375 ug/l  
 RT: 7.634 min Scan# 911  
 Delta R.T. -0.006 min  
 Lab File: VY021648.D  
 Acq: 26 Mar 2025 15:47

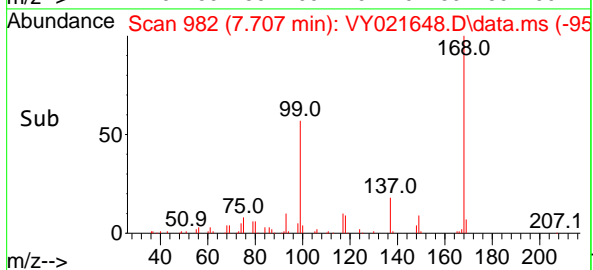
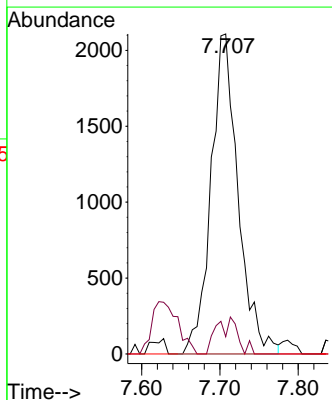
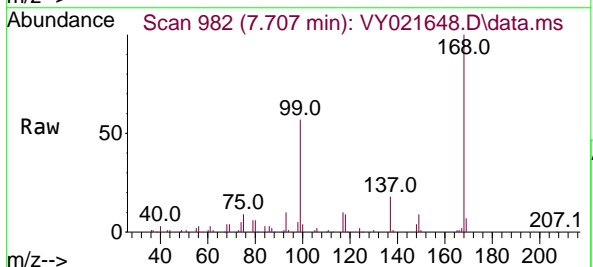
Instrument : MSVOA\_Y  
 ClientSampleId : EO-02-032525

Tgt Ion	Resp	Lower	Upper
113	30838		
113	100		
111	100.3	82.0	123.0
192	19.7	15.9	23.9

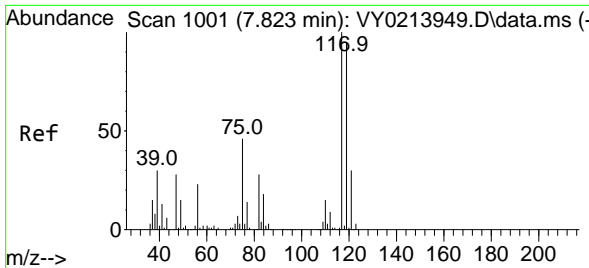


#36  
 1,1-Dichloropropene  
 Concen: 5.825 ug/l  
 RT: 7.707 min Scan# 982  
 Delta R.T. -0.134 min  
 Lab File: VY021648.D  
 Acq: 26 Mar 2025 15:47

Tgt Ion	Resp	Lower	Upper
75	5078		
75	100		
110	4.6	17.3	51.7#
77	0.0	25.4	38.2#

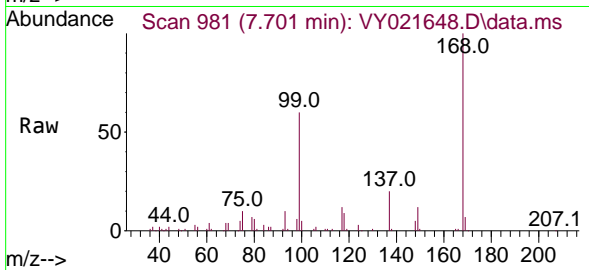




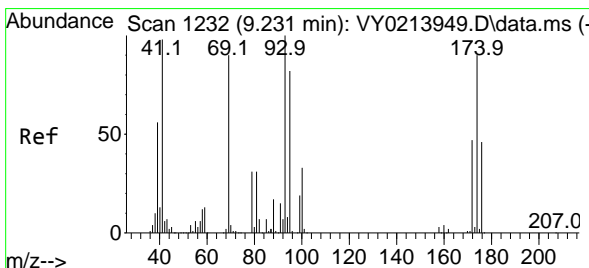
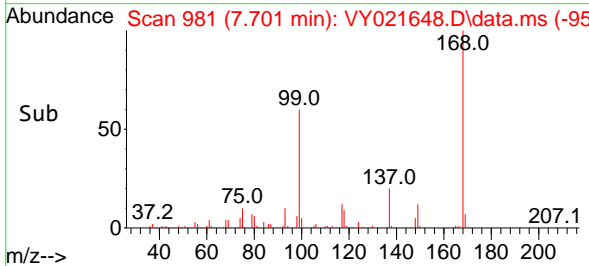
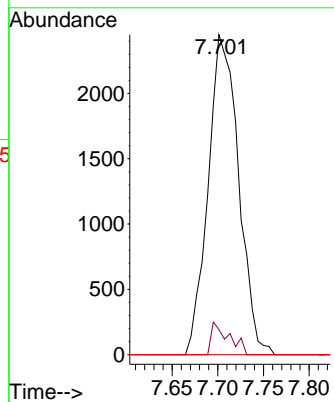


#38  
 Carbon Tetrachloride  
 Concen: 5.665 ug/l  
 RT: 7.701 min Scan# 91  
 Delta R.T. -0.122 min  
 Lab File: VY021648.D  
 Acq: 26 Mar 2025 15:47

Instrument :  
 MSVOA\_Y  
 ClientSampleId :  
 EO-02-032525

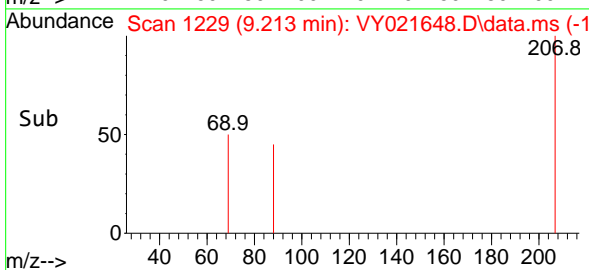
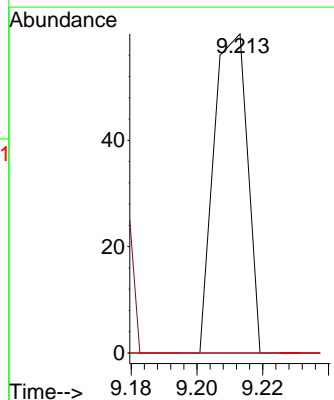
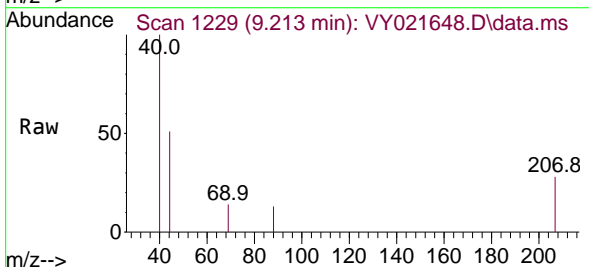


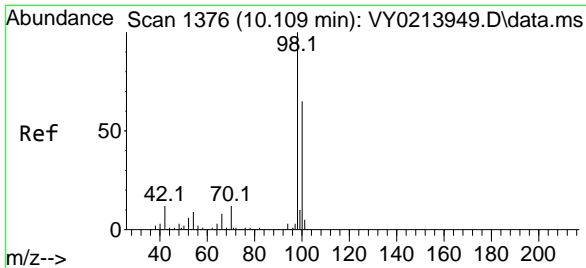
Tgt Ion:117 Resp: 5679  
 Ion Ratio Lower Upper  
 117 100  
 119 7.8 75.8 113.8#  
 121 0.0 23.9 35.9#



#49  
 1,4-Dioxane  
 Concen: 12.583 ug/l  
 RT: 9.213 min Scan# 1229  
 Delta R.T. -0.018 min  
 Lab File: VY021648.D  
 Acq: 26 Mar 2025 15:47

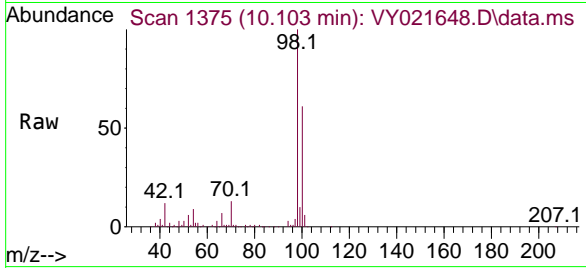
Tgt Ion: 88 Resp: 42  
 Ion Ratio Lower Upper  
 88 100  
 43 0.0 25.0 37.4#  
 58 0.0 58.4 87.6#



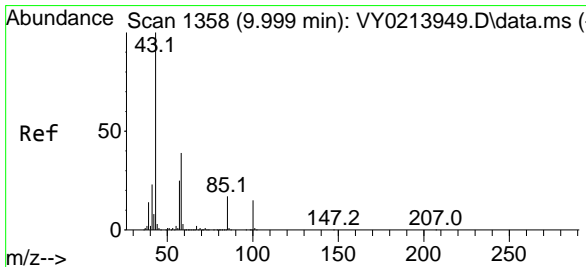
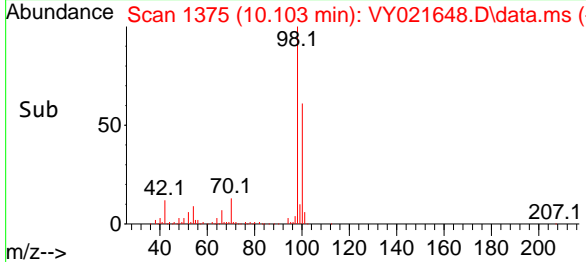
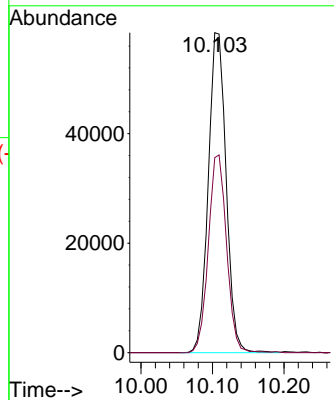


#50  
 Toluene-d8  
 Concen: 48.024 ug/l  
 RT: 10.103 min Scan# 111  
 Delta R.T. -0.006 min  
 Lab File: VY021648.D  
 Acq: 26 Mar 2025 15:47

Instrument : MSVOA\_Y  
 ClientSampleId : EO-02-032525

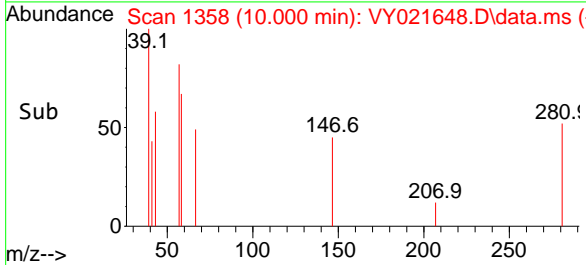
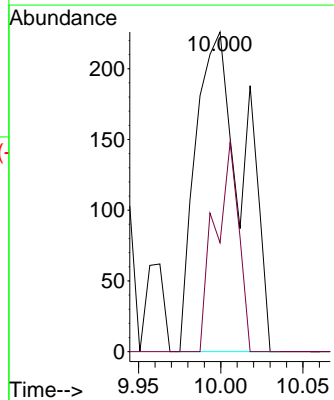
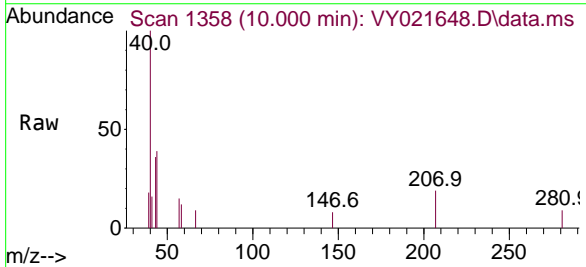


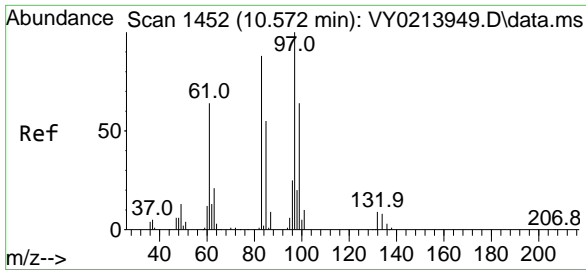
Tgt Ion: 98 Resp: 101262  
 Ion Ratio Lower Upper  
 98 100  
 100 63.2 52.1 78.1



#51  
 4-Methyl-2-Pentanone  
 Concen: 1.182 ug/l  
 RT: 10.000 min Scan# 1358  
 Delta R.T. 0.000 min  
 Lab File: VY021648.D  
 Acq: 26 Mar 2025 15:47

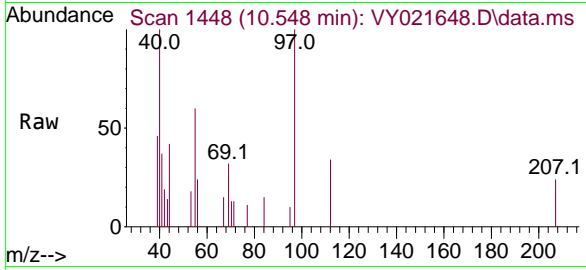
Tgt Ion: 43 Resp: 456  
 Ion Ratio Lower Upper  
 43 100  
 58 32.5 31.4 47.2





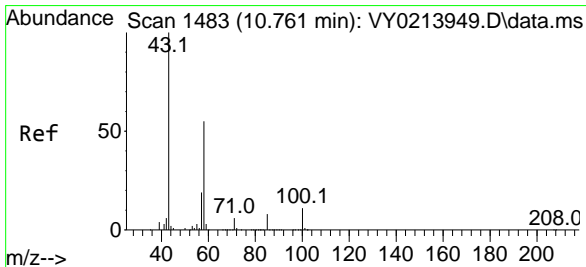
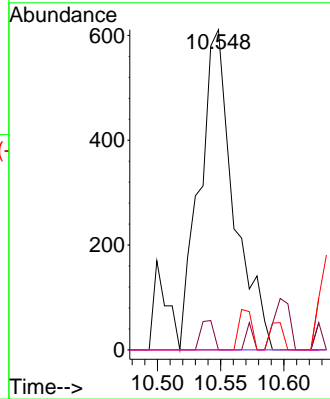
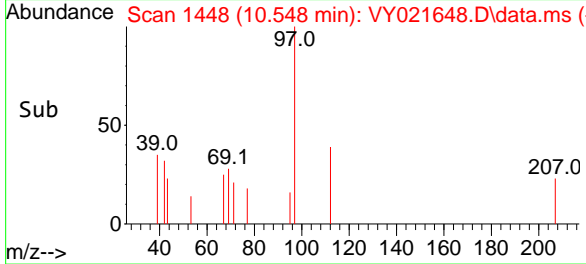
#55  
 1,1,2-Trichloroethane  
 Concen: 2.590 ug/l  
 RT: 10.548 min Scan# 1452  
 Delta R.T. -0.024 min  
 Lab File: VY021648.D  
 Acq: 26 Mar 2025 15:47

Instrument : MSVOA\_Y  
 ClientSampleId : EO-02-032525

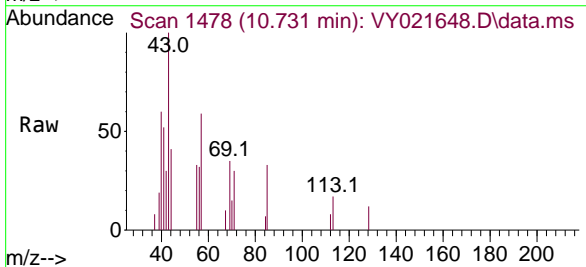


Tgt Ion: 97 Resp: 1152

Ion	Ratio	Lower	Upper
97	100		
83	0.0	70.0	105.0#
85	0.0	44.3	66.5#
99	0.0	51.4	77.0#

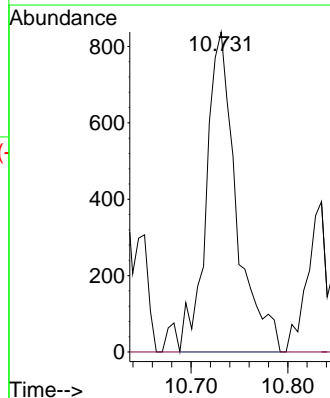
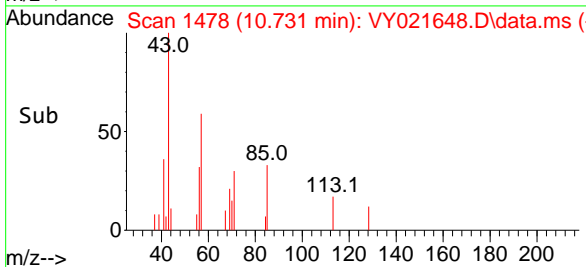


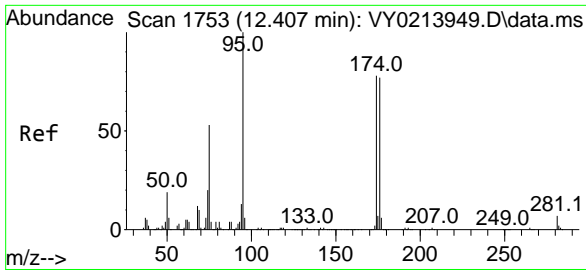
#59  
 2-Hexanone  
 Concen: 7.121 ug/l  
 RT: 10.731 min Scan# 1478  
 Delta R.T. -0.030 min  
 Lab File: VY021648.D  
 Acq: 26 Mar 2025 15:47



Tgt Ion: 43 Resp: 1817

Ion	Ratio	Lower	Upper
43	100		
58	0.0	27.3	81.8#

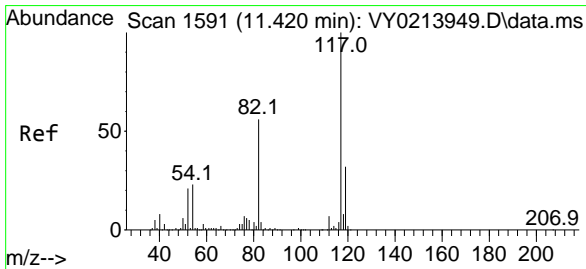
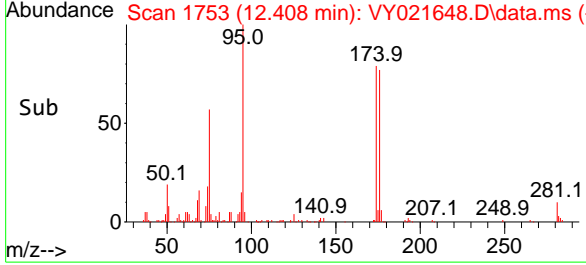
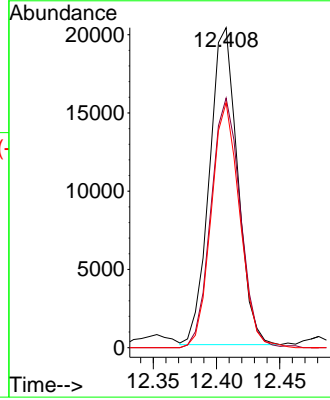
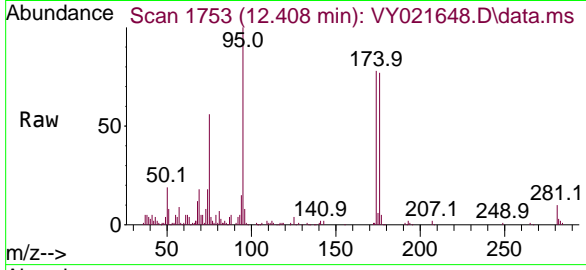




#62  
 4-Bromofluorobenzene  
 Concen: 43.809 ug/l  
 RT: 12.408 min Scan# 11  
 Delta R.T. 0.000 min  
 Lab File: VY021648.D  
 Acq: 26 Mar 2025 15:47

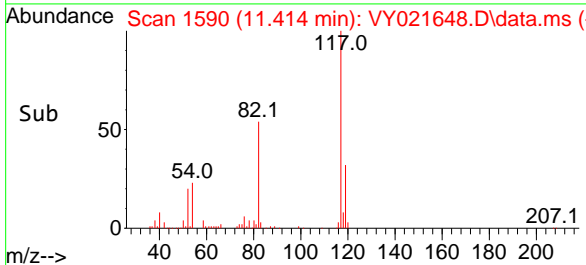
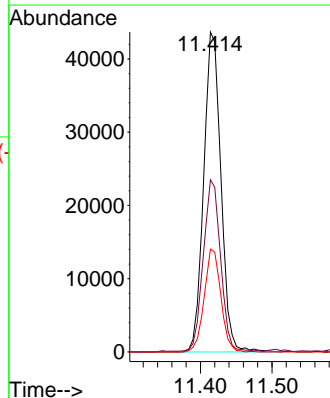
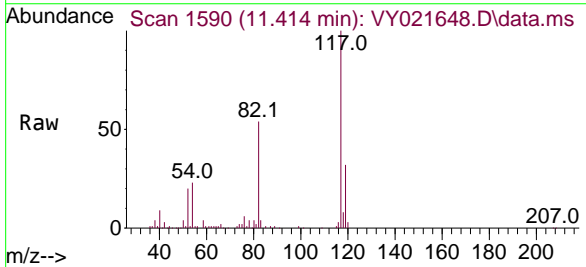
Instrument :  
 MSVOA\_Y  
 ClientSampleId :  
 EO-02-032525

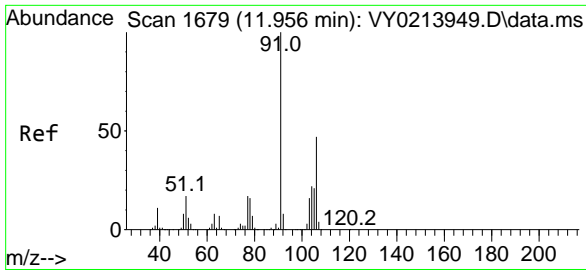
Tgt Ion: 95 Resp: 31422  
 Ion Ratio Lower Upper  
 95 100  
 174 81.9 0.0 165.0  
 176 77.7 0.0 160.0



#63  
 Chlorobenzene-d5  
 Concen: 50.000 ug/l  
 RT: 11.414 min Scan# 1590  
 Delta R.T. -0.006 min  
 Lab File: VY021648.D  
 Acq: 26 Mar 2025 15:47

Tgt Ion: 117 Resp: 73211  
 Ion Ratio Lower Upper  
 117 100  
 82 53.5 44.6 67.0  
 119 32.2 25.4 38.0

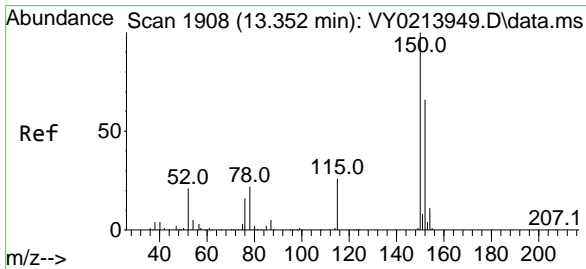
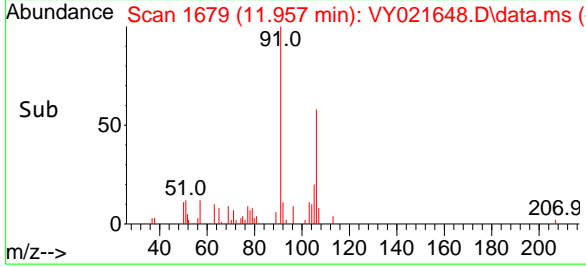
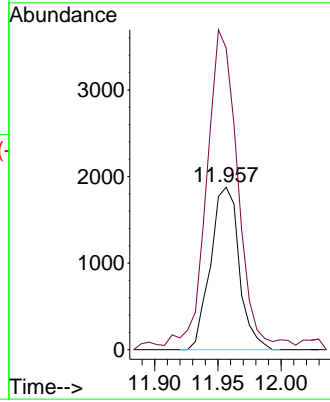
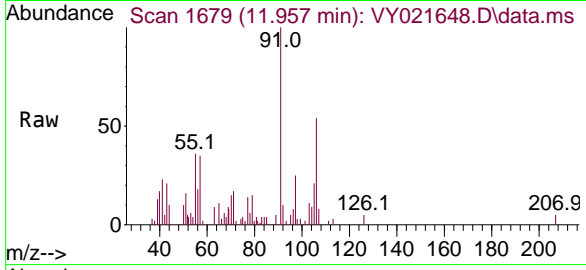




#69  
 o-Xylene  
 Concen: 2.778 ug/l  
 RT: 11.957 min Scan# 11  
 Delta R.T. 0.000 min  
 Lab File: VY021648.D  
 Acq: 26 Mar 2025 15:47

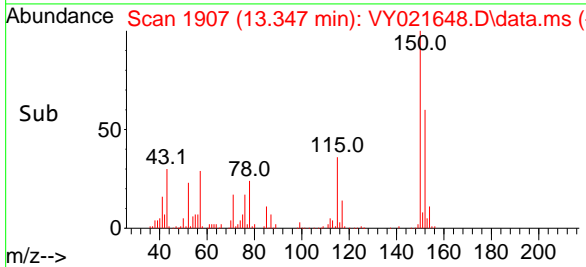
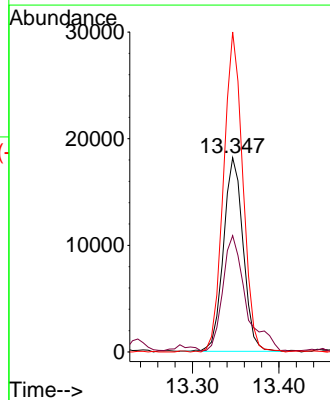
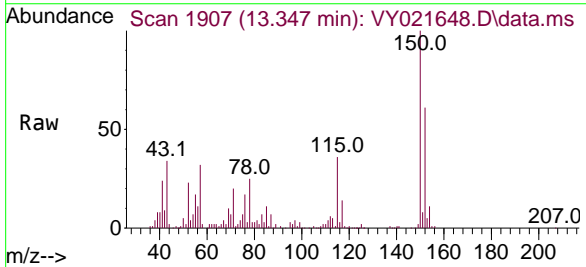
Instrument : MSVOA\_Y  
 ClientSampleId : EO-02-032525

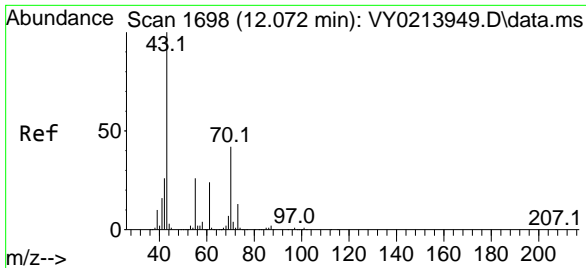
Tgt Ion:106 Resp: 2950  
 Ion Ratio Lower Upper  
 106 100  
 91 219.9 107.6 322.8



#72  
 1,4-Dichlorobenzene-d4  
 Concen: 50.000 ug/l  
 RT: 13.347 min Scan# 1907  
 Delta R.T. -0.006 min  
 Lab File: VY021648.D  
 Acq: 26 Mar 2025 15:47

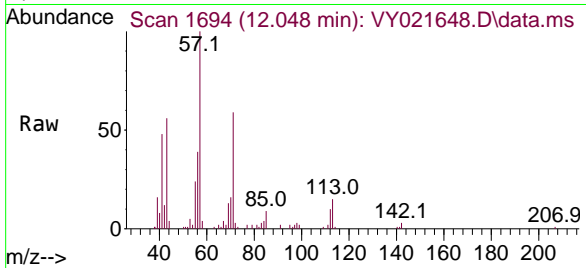
Tgt Ion:152 Resp: 28659  
 Ion Ratio Lower Upper  
 152 100  
 115 70.8 29.0 87.0  
 150 161.4 0.0 347.2





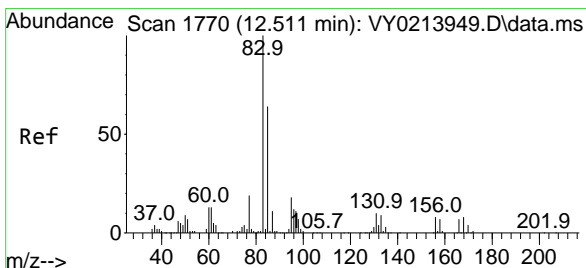
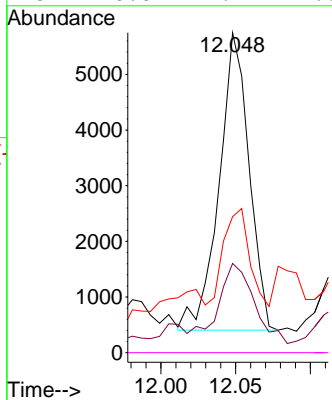
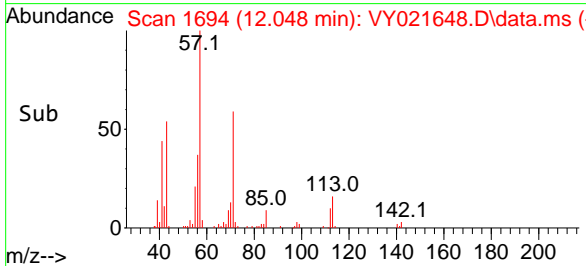
#74  
 N-amy1 acetate  
 Concen: 15.128 ug/l  
 RT: 12.048 min Scan# 11  
 Delta R.T. -0.024 min  
 Lab File: VY021648.D  
 Acq: 26 Mar 2025 15:47

Instrument : MSVOA\_Y  
 ClientSampleId : EO-02-032525

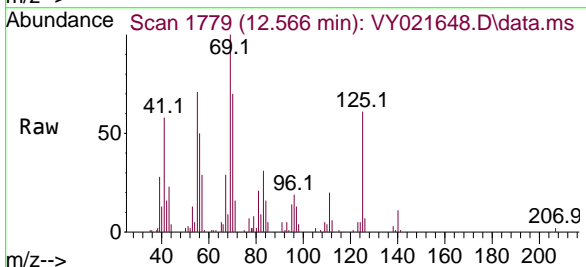


Tgt Ion: 43 Resp: 7417

Ion	Ratio	Lower	Upper
43	100		
70	29.5	34.6	51.8#
55	27.9	21.1	31.7
61	0.0	19.4	29.0#

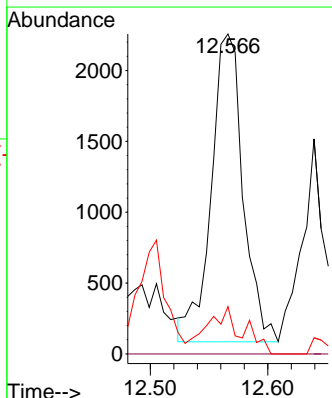
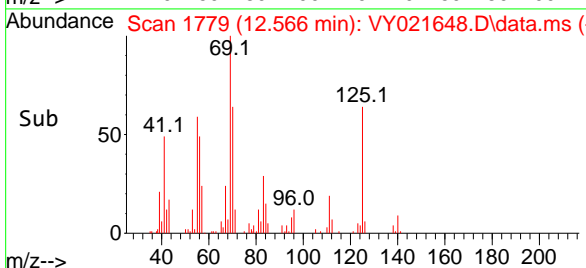


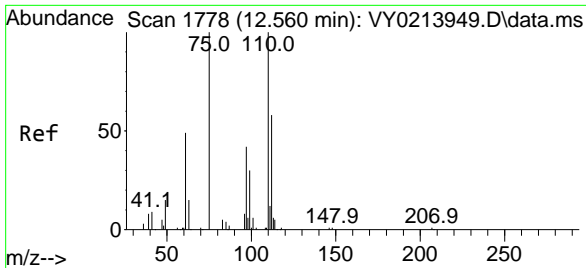
#75  
 1,1,2,2-Tetrachloroethane  
 Concen: 10.269 ug/l  
 RT: 12.566 min Scan# 1779  
 Delta R.T. 0.055 min  
 Lab File: VY021648.D  
 Acq: 26 Mar 2025 15:47



Tgt Ion: 83 Resp: 4091

Ion	Ratio	Lower	Upper
83	100		
131	0.0	5.3	16.1#
85	0.0	31.9	95.5#





#76  
 1,2,3-Trichloropropane  
 Concen: 59.299 ug/l  
 RT: 12.408 min Scan# 1778  
 Delta R.T. -0.152 min  
 Lab File: VY021648.D  
 Acq: 26 Mar 2025 15:47

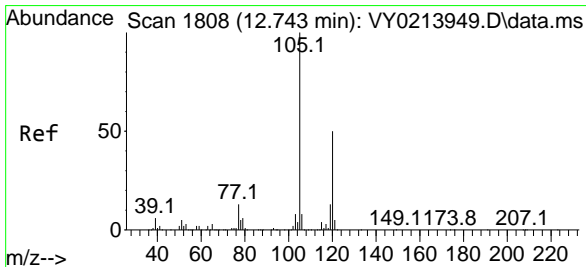
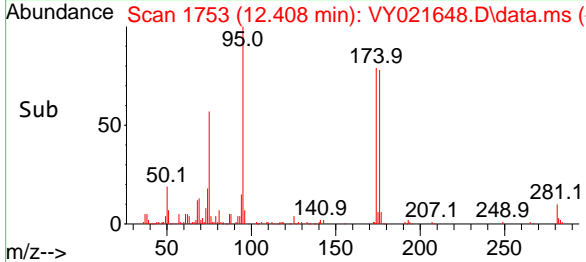
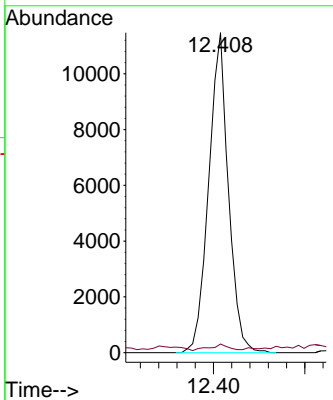
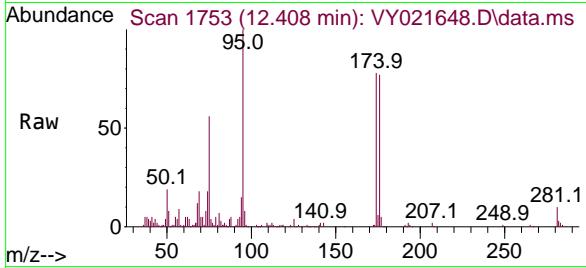
Instrument :

MSVOA\_Y

ClientSampleId :

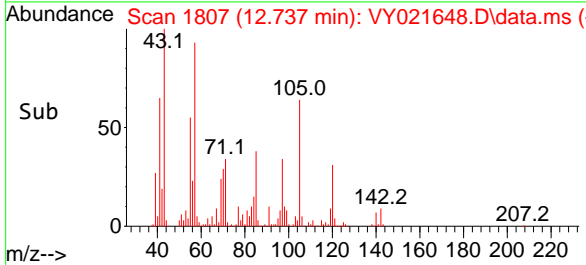
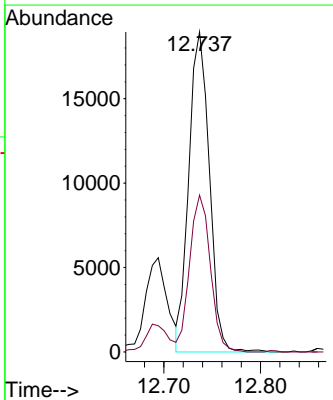
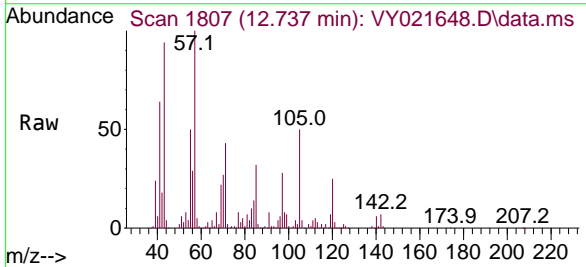
EO-02-032525

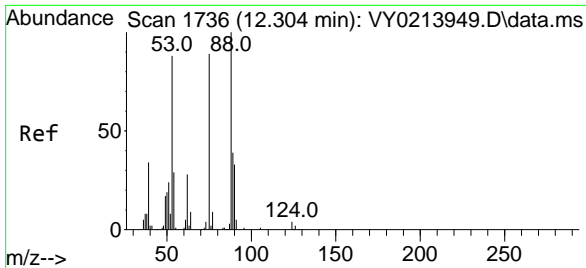
Tgt Ion: 75 Resp: 17125  
 Ion Ratio Lower Upper  
 75 100  
 77 1.9 0.0 0.0#



#80  
 1,3,5-Trimethylbenzene  
 Concen: 15.220 ug/l  
 RT: 12.737 min Scan# 1807  
 Delta R.T. -0.006 min  
 Lab File: VY021648.D  
 Acq: 26 Mar 2025 15:47

Tgt Ion: 105 Resp: 27923  
 Ion Ratio Lower Upper  
 105 100  
 120 49.5 24.6 73.6

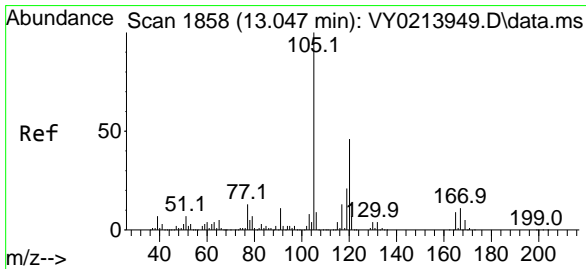
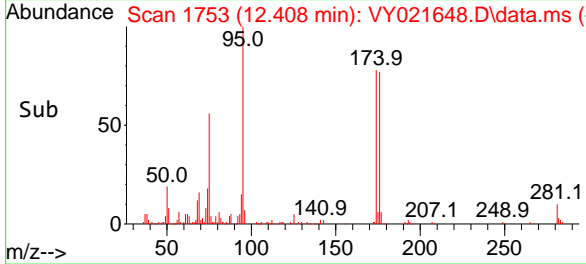
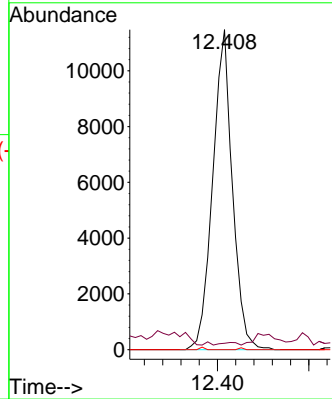
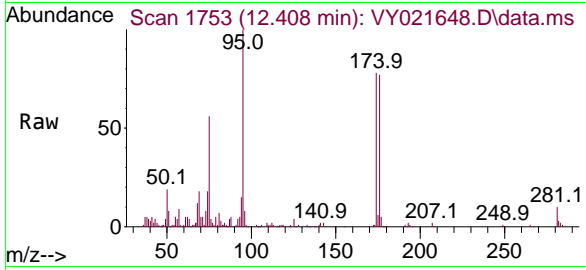




#81  
 trans-1,4-Dichloro-2-butene  
 Concen: 134.804 ug/l  
 RT: 12.408 min Scan# 11  
 Delta R.T. 0.104 min  
 Lab File: VY021648.D  
 Acq: 26 Mar 2025 15:47

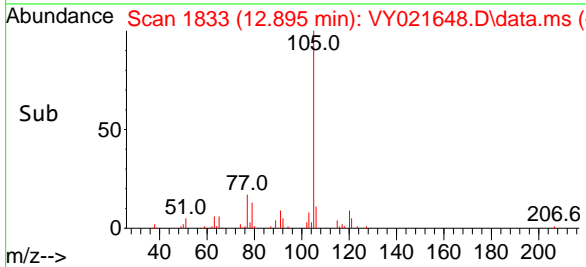
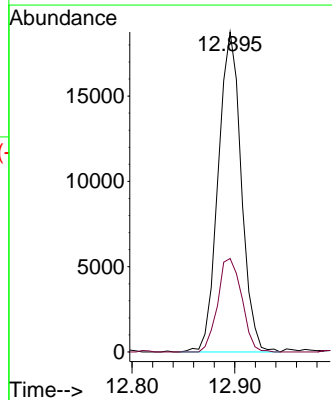
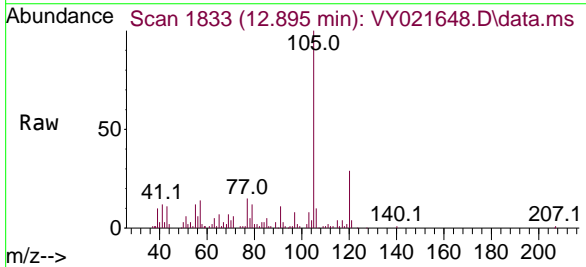
Instrument :  
 MSVOA\_Y  
 ClientSampleId :  
 EO-02-032525

Tgt Ion: 75 Resp: 17125  
 Ion Ratio Lower Upper  
 75 100  
 53 0.6 81.0 121.4#  
 89 0.0 36.9 55.3#

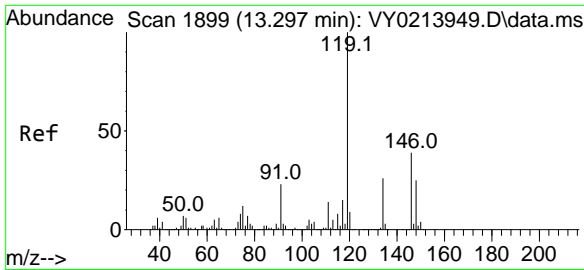


#84  
 1,2,4-Trimethylbenzene  
 Concen: 16.033 ug/l  
 RT: 12.895 min Scan# 1833  
 Delta R.T. -0.152 min  
 Lab File: VY021648.D  
 Acq: 26 Mar 2025 15:47

Tgt Ion: 105 Resp: 29205  
 Ion Ratio Lower Upper  
 105 100  
 120 30.4 22.7 68.1

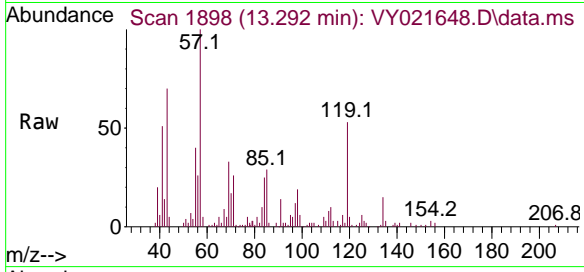






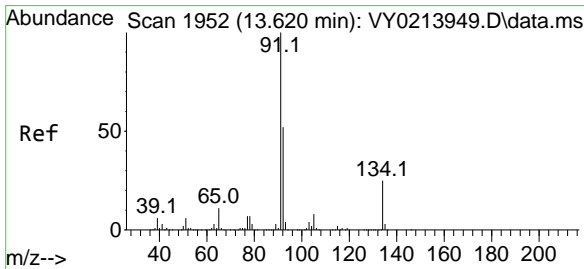
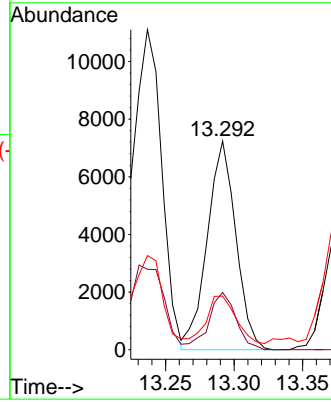
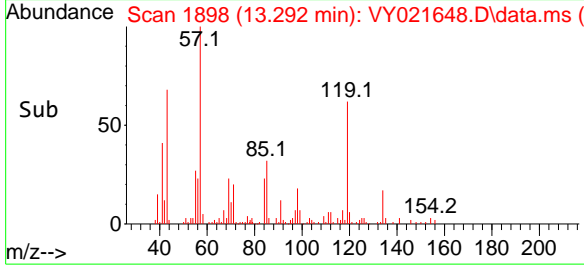
#86  
 p-Isopropyltoluene  
 Concen: 5.228 ug/l  
 RT: 13.292 min Scan# 1191  
 Delta R.T. -0.006 min  
 Lab File: VY021648.D  
 Acq: 26 Mar 2025 15:47

Instrument : MSVOA\_Y  
 ClientSampleId : EO-02-032525

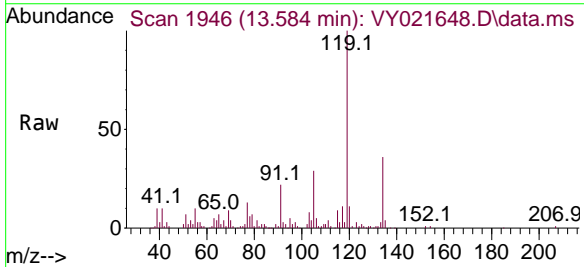


Tgt Ion: 119 Resp: 10489

Ion	Ratio	Lower	Upper
119	100		
134	25.6	13.1	39.1
91	23.6	12.2	36.6

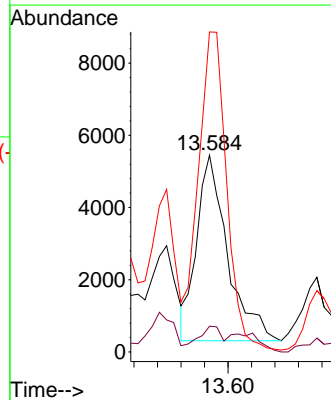
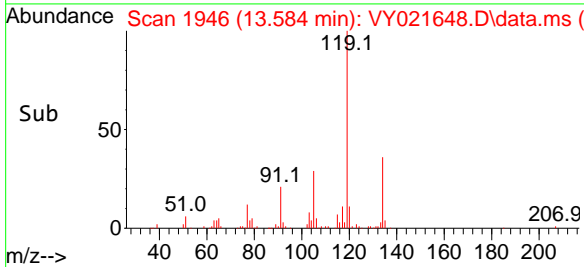


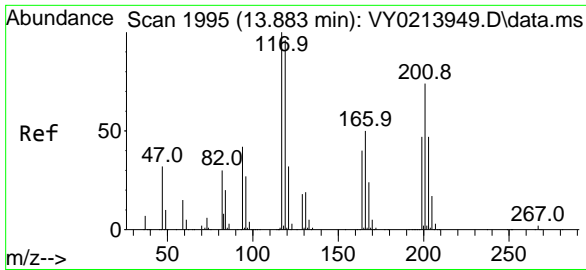
#89  
 n-Butylbenzene  
 Concen: 5.077 ug/l  
 RT: 13.584 min Scan# 1946  
 Delta R.T. -0.036 min  
 Lab File: VY021648.D  
 Acq: 26 Mar 2025 15:47



Tgt Ion: 91 Resp: 9405

Ion	Ratio	Lower	Upper
91	100		
92	5.5	26.1	78.3#
134	157.6	12.6	37.8#

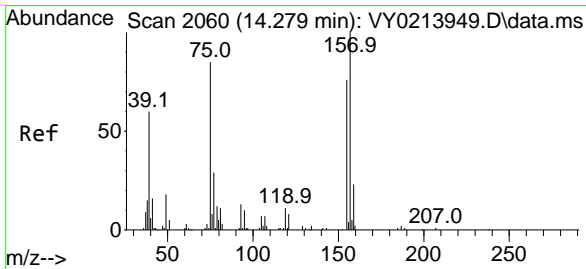
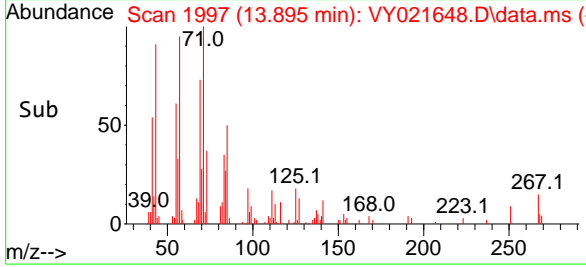
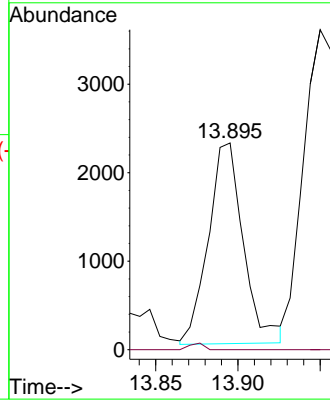
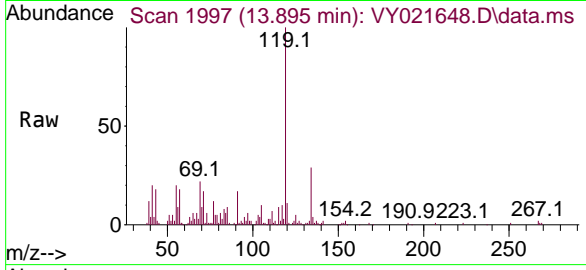




#90  
 Hexachloroethane  
 Concen: 7.863 ug/l  
 RT: 13.895 min Scan# 1997  
 Delta R.T. 0.013 min  
 Lab File: VY021648.D  
 Acq: 26 Mar 2025 15:47

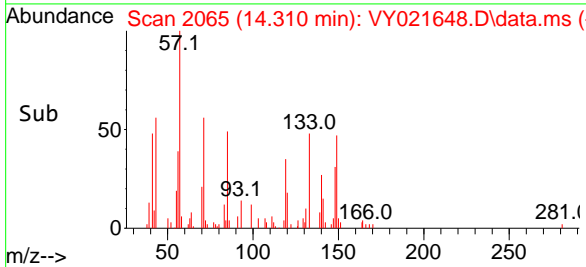
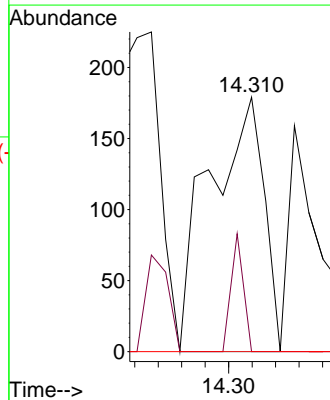
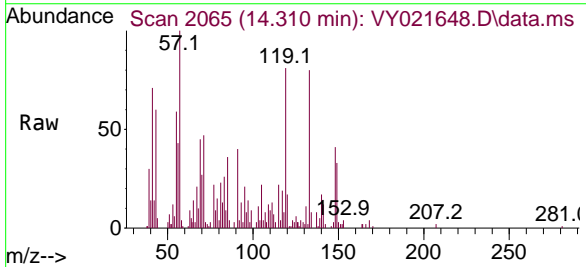
Instrument : MSVOA\_Y  
 ClientSampleId : EO-02-032525

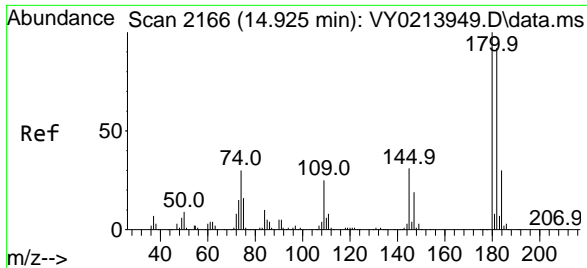
Tgt Ion:117 Resp: 3365  
 Ion Ratio Lower Upper  
 117 100  
 201 1.4 37.4 112.2#



#92  
 1,2-Dibromo-3-Chloropropane  
 Concen: 4.826 ug/l  
 RT: 14.310 min Scan# 2065  
 Delta R.T. 0.031 min  
 Lab File: VY021648.D  
 Acq: 26 Mar 2025 15:47

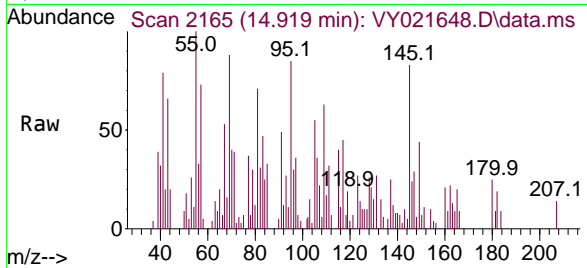
Tgt Ion: 75 Resp: 288  
 Ion Ratio Lower Upper  
 75 100  
 155 10.4 43.5 130.5#  
 157 0.0 54.4 163.2#



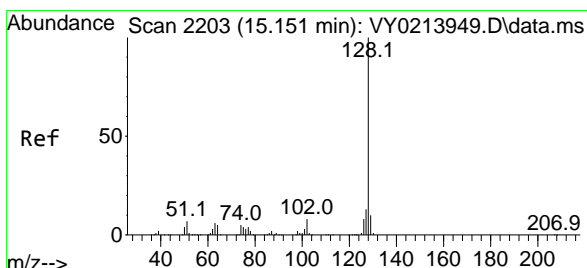
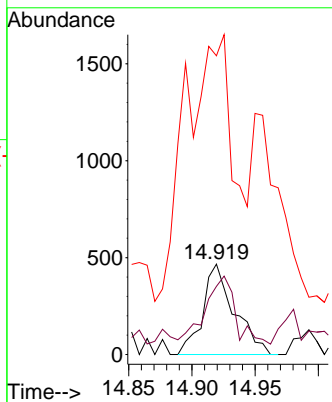
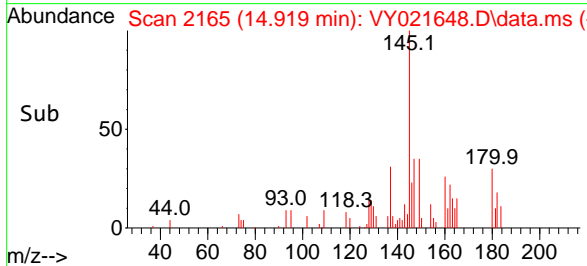


#93  
 1,2,4-Trichlorobenzene  
 Concen: 1.648 ug/l  
 RT: 14.919 min Scan# 2165  
 Delta R.T. -0.006 min  
 Lab File: VY021648.D  
 Acq: 26 Mar 2025 15:47

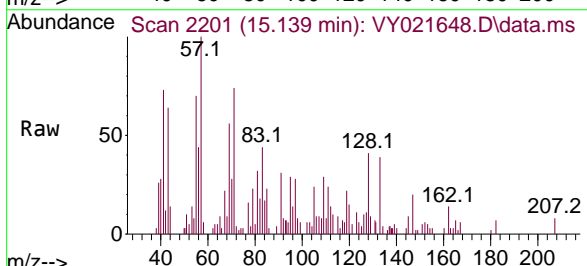
Instrument : MSVOA\_Y  
 ClientSampleId : EO-02-032525



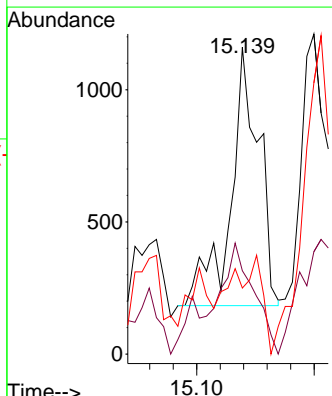
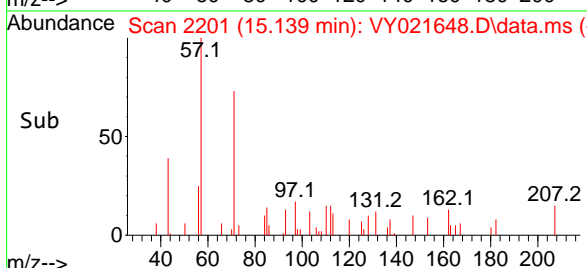
Tgt Ion:180 Resp: 811  
 Ion Ratio Lower Upper  
 180 100  
 182 100.6 46.7 140.0  
 145 299.8 15.6 46.8#

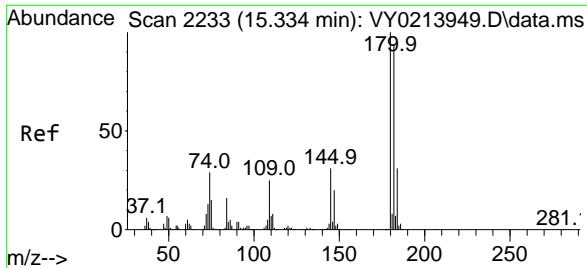


#95  
 Naphthalene  
 Concen: 3.546 ug/l  
 RT: 15.139 min Scan# 2201  
 Delta R.T. -0.012 min  
 Lab File: VY021648.D  
 Acq: 26 Mar 2025 15:47



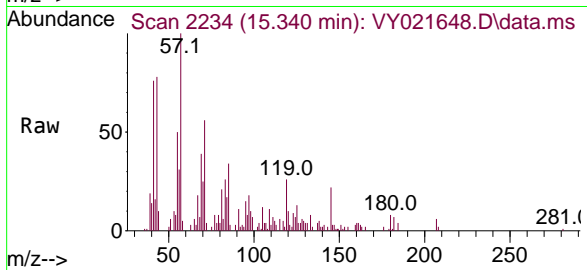
Tgt Ion:128 Resp: 1634  
 Ion Ratio Lower Upper  
 128 100  
 127 48.8 10.6 15.8#  
 129 8.2 8.6 13.0#





#96  
 1,2,3-Trichlorobenzene  
 Concen: 2.143 ug/l  
 RT: 15.340 min Scan# 21  
 Delta R.T. 0.006 min  
 Lab File: VY021648.D  
 Acq: 26 Mar 2025 15:47

Instrument :  
 MSVOA\_Y  
 ClientSampleId :  
 EO-02-032525



Tgt Ion:180 Resp: 887

Ion	Ratio	Lower	Upper
180	100		
182	96.4	47.2	141.6
145	0.0	16.4	49.1#

