

Data Path : Z:\voasrv\HPCHEM1\MSVOA_Y\Data\VY033125\
 Data File : VY021716.D
 Acq On : 31 Mar 2025 13:51
 Operator : SY/MD
 Sample : Q1679-07
 Misc : 6.38g/5.0mL/MSVOA_Y/SOIL/A
 ALS Vial : 8 Sample Multiplier: 1

Instrument :
 MSVOA_Y
 ClientSampleId :
 TP-9-VOC

Integration Parameters: RTEINT.P

Integrator: RTE
 Smoothing : ON
 Sampling : 1
 Start Thrs : 0.2
 Stop Thrs : 0

Filtering: 5
 Min Area: 3 % of largest Peak
 Max Peaks: 100
 Peak Location: TOP

If leading or trailing edge < 100 prefer < Baseline drop else tangent >
 Peak separation: 5

Method : Z:\voasrv\HPCHEM1\MSVOA_Y\methods\82Y032725S.M
 Title : SW846 8260

Signal : TIC: VY021716.D\data.ms

peak #	R.T. min	first scan	max scan	last scan	PK TY	peak height	corr. area	corr. % max.	% of total
1	1.824	12	17	23	rBV2	25639	37850	2.46%	0.447%
2	2.196	68	78	88	rBV	25795	48992	3.19%	0.578%
3	2.336	97	101	108	rVB	9355	15980	1.04%	0.189%
4	2.842	178	184	191	rVB3	12221	26489	1.72%	0.313%
5	3.184	232	240	246	rVB2	9654	22355	1.46%	0.264%
6	3.866	339	352	366	rBV2	11501	34826	2.27%	0.411%
7	4.622	466	476	477	rBV4	8831	21227	1.38%	0.251%
8	5.653	633	645	655	rVB4	10072	32232	2.10%	0.381%
9	6.896	842	849	860	rBV6	6294	21780	1.42%	0.257%
10	7.634	960	970	976	rBV	207436	503534	32.79%	5.946%
11	7.707	976	982	994	rVB	312341	719040	46.82%	8.490%
12	8.061	1031	1040	1052	rBV2	199254	491957	32.03%	5.809%
13	8.469	1097	1107	1114	rBV3	10061	21211	1.38%	0.250%
14	8.616	1122	1131	1142	rBV	523794	1033239	67.28%	12.200%
15	8.866	1166	1172	1179	rBV4	10515	20724	1.35%	0.245%
16	9.109	1200	1212	1219	rBV2	30426	65028	4.23%	0.768%
17	9.750	1311	1317	1320	rBV2	12144	21720	1.41%	0.256%
18	9.890	1330	1340	1350	rVB	14014	31911	2.08%	0.377%
19	10.103	1368	1375	1384	rBV	874946	1535815	100.00%	18.135%
20	10.164	1384	1385	1392	rVB	16745	22402	1.46%	0.265%
21	10.298	1399	1407	1415	rVB3	29237	55970	3.64%	0.661%
22	10.445	1421	1431	1437	rBV2	15470	29607	1.93%	0.350%
23	10.512	1437	1442	1443	rBV2	11814	17397	1.13%	0.205%
24	10.542	1443	1447	1453	rVB2	20457	39251	2.56%	0.463%
25	10.902	1498	1506	1508	rBV7	11495	26222	1.71%	0.310%
26	10.963	1513	1516	1521	rVV	21547	35511	2.31%	0.419%
27	11.018	1521	1525	1530	rVB2	10953	18883	1.23%	0.223%
28	11.213	1552	1557	1562	rBV5	16444	35635	2.32%	0.421%
29	11.310	1567	1573	1580	rVB2	10752	17894	1.17%	0.211%
30	11.414	1583	1590	1600	rBV	810357	1291886	84.12%	15.255%
31	11.517	1600	1607	1611	rBV	21012	38504	2.51%	0.455%
32	11.633	1616	1626	1635	rVV4	40542	123083	8.01%	1.453%
33	11.950	1668	1678	1687	rBV2	25441	60425	3.93%	0.713%
34	12.408	1744	1753	1763	rBV	591866	919763	59.89%	10.861%
35	13.042	1852	1857	1862	rBV2	14018	21434	1.40%	0.253%
36	13.346	1900	1907	1921	rBV	652504	1009086	65.70%	11.915%

Data Path : Z:\voasrv\HPCHEM1\MSVOA_Y\Data\VY033125\
Data File : VY021716.D
Acq On : 31 Mar 2025 13:51
Operator : SY/MD
Sample : Q1679-07
Misc : 6.38g/5.0mL/MSVOA_Y/SOIL/A
ALS Vial : 8 Sample Multiplier: 1

Instrument :
MSVOA_Y
ClientSampleId :
TP-9-VOC

Integration Parameters: RTEINT.P

Integrator: RTE

Smoothing : ON

Filtering: 5

Sampling : 1

Min Area: 3 % of largest Peak

Start Thrs: 0.2

Max Peaks: 100

Stop Thrs : 0

Peak Location: TOP

If leading or trailing edge < 100 prefer < Baseline drop else tangent >

Peak separation: 5

Method : Z:\voasrv\HPCHEM1\MSVOA_Y\methods\82Y032725S.M

Title : SW846 8260

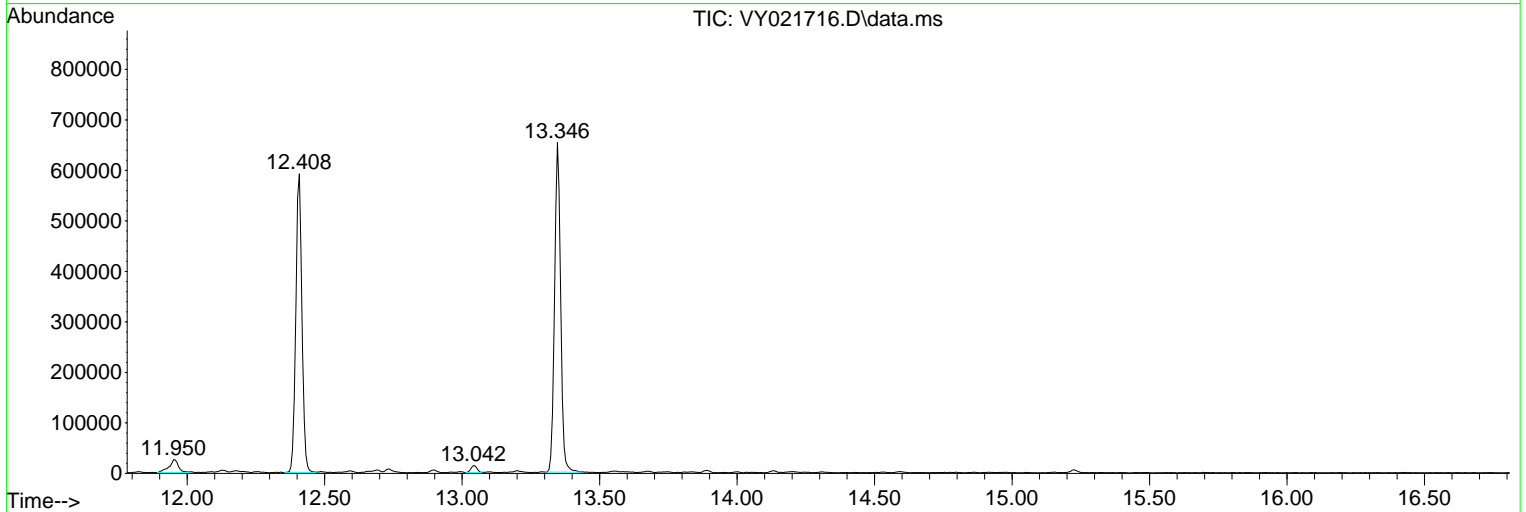
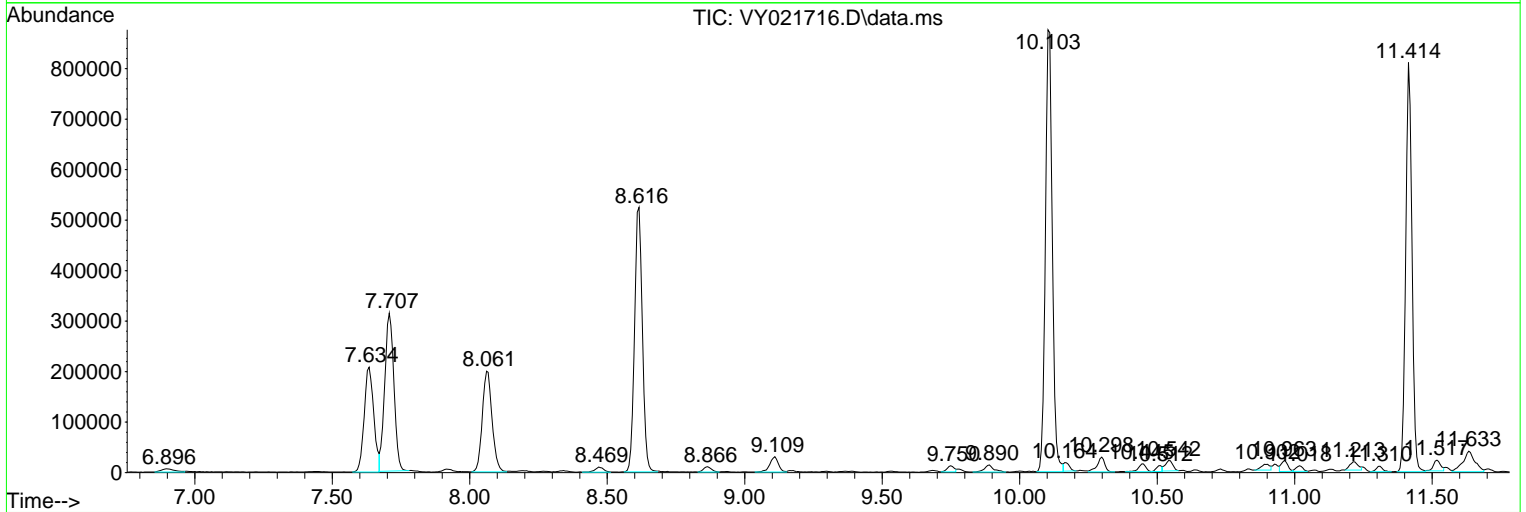
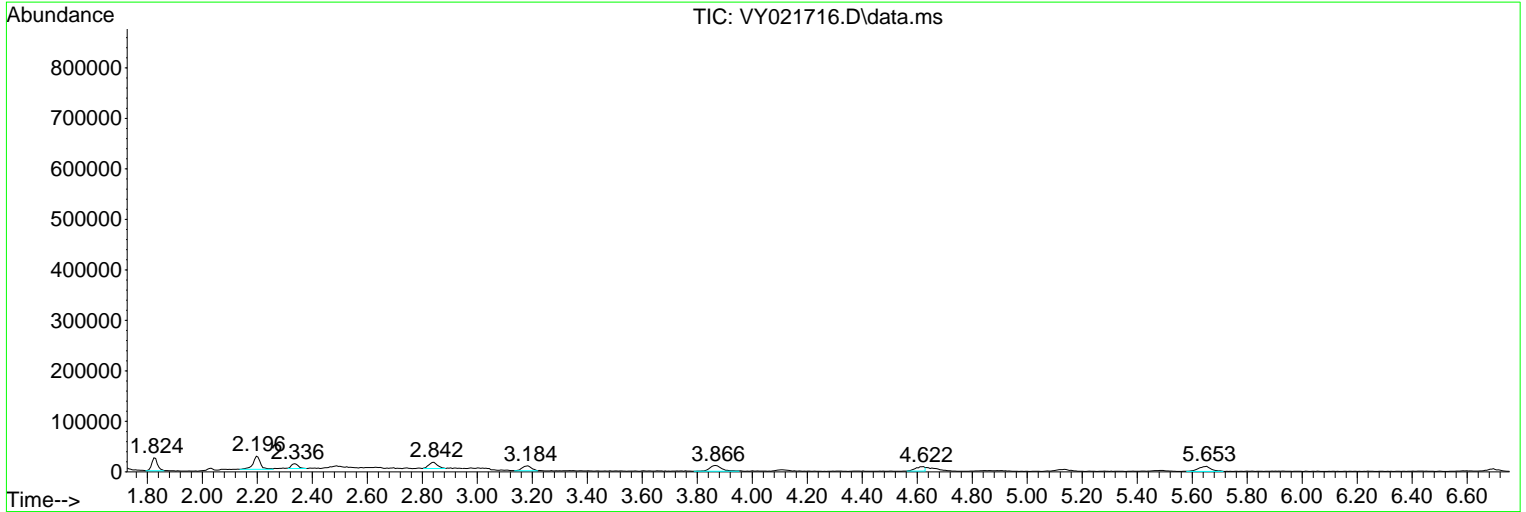
Sum of corrected areas: 8468863

Data Path : Z:\voasrv\HPCHEM1\MSVOA_Y\Data\VY033125\
 Data File : VY021716.D
 Acq On : 31 Mar 2025 13:51
 Operator : SY/MD
 Sample : Q1679-07
 Misc : 6.38g/5.0mL/MSVOA_Y/SOIL/A
 ALS Vial : 8 Sample Multiplier: 1

Instrument :
 MSVOA_Y
 ClientSampleId :
 TP-9-VOC

Quant Method : Z:\voasrv\HPCHEM1\MSVOA_Y\methods\82Y032725S.M
 Quant Title : SW846 8260

TIC Library : C:\Database\NIST20.L
 TIC Integration Parameters: LSCINT.P



Library Search Compound Report

Data Path : Z:\voasrv\HPCHEM1\MSVOA_Y\Data\VY033125\
Data File : VY021716.D
Acq On : 31 Mar 2025 13:51
Operator : SY/MD
Sample : Q1679-07
Misc : 6.38g/5.0mL/MSVOA_Y/SOIL/A
ALS Vial : 8 Sample Multiplier: 1

Instrument :
MSVOA_Y
ClientSampleId :
TP-9-VOC

Quant Method : Z:\voasrv\HPCHEM1\MSVOA_Y\methods\82Y032725S.M
Quant Title : SW846 8260

TIC Library : C:\Database\NIST20.L
TIC Integration Parameters: LSCINT.P

No Library Search Compounds Detected

Data Path : Z:\voasrv\HPCHEM1\MSVOA_Y\Data\VY033125\
Data File : VY021716.D
Acq On : 31 Mar 2025 13:51
Operator : SY/MD
Sample : Q1679-07
Misc : 6.38g/5.0mL/MSVOA_Y/SOIL/A
ALS Vial : 8 Sample Multiplier: 1

Instrument :
MSVOA_Y
ClientSampleId :
TP-9-VOC

Quant Method : Z:\voasrv\HPCHEM1\MSVOA_Y\methods\82Y032725S.M
Quant Title : SW846 8260

TIC Library : C:\Database\NIST0.L
TIC Integration Parameters: LSCINT.P

TIC Top Hit name	RT	EstConc	Units	Response	#	RT	Resp	Conc
------------------	----	---------	-------	----------	---	----	------	------
