

Data Path : Z:\voasrv\HPCHEM1\MSVOA_Y\Data\VY040122\
 Data File : VY008170.D
 Acq On : 01 Apr 2022 18:48
 Operator : SY/MD
 Sample : N2220-13
 Misc : 5.56g/5.0mL/MSVOA_Y/SOIL
 ALS Vial : 23 Sample Multiplier: 1

Instrument :
 MSVOA_Y
 ClientSampleId :
 A05140

Integration Parameters: RTEINT.P

Integrator: RTE
 Smoothing : ON Filtering: 5
 Sampling : 1 Min Area: 3 % of largest Peak
 Start Thrs: 0.2 Max Peaks: 100
 Stop Thrs : 0 Peak Location: TOP

If leading or trailing edge < 100 prefer < Baseline drop else tangent >
 Peak separation: 5

Method : Z:\voasrv\HPCHEM1\MSVOA_Y\methods\82Y032522S.M
 Title : SW846 8260

Signal : TIC: VY008170.D\data.ms

peak #	R.T. min	first scan	max scan	last scan	PK TY	peak height	corr. area	corr. % max.	% of total
1	7.715	958	967	973	rBV	78095	187045	10.31%	5.146%
2	7.789	973	979	989	rVB	126269	281538	15.52%	7.745%
3	8.142	1028	1037	1047	rVB	61886	137121	7.56%	3.772%
4	8.691	1118	1127	1137	rBV	175066	350153	19.30%	9.633%
5	10.178	1364	1371	1383	rBV	258023	439117	24.20%	12.080%
6	11.489	1575	1586	1594	rBV	155093	249971	13.78%	6.877%
7	12.495	1742	1751	1758	rBV	1124061	1814193	100.00%	49.908%
8	13.428	1898	1904	1910	rVB	53922	83974	4.63%	2.310%
9	13.964	1986	1992	1999	rVB2	57455	91977	5.07%	2.530%

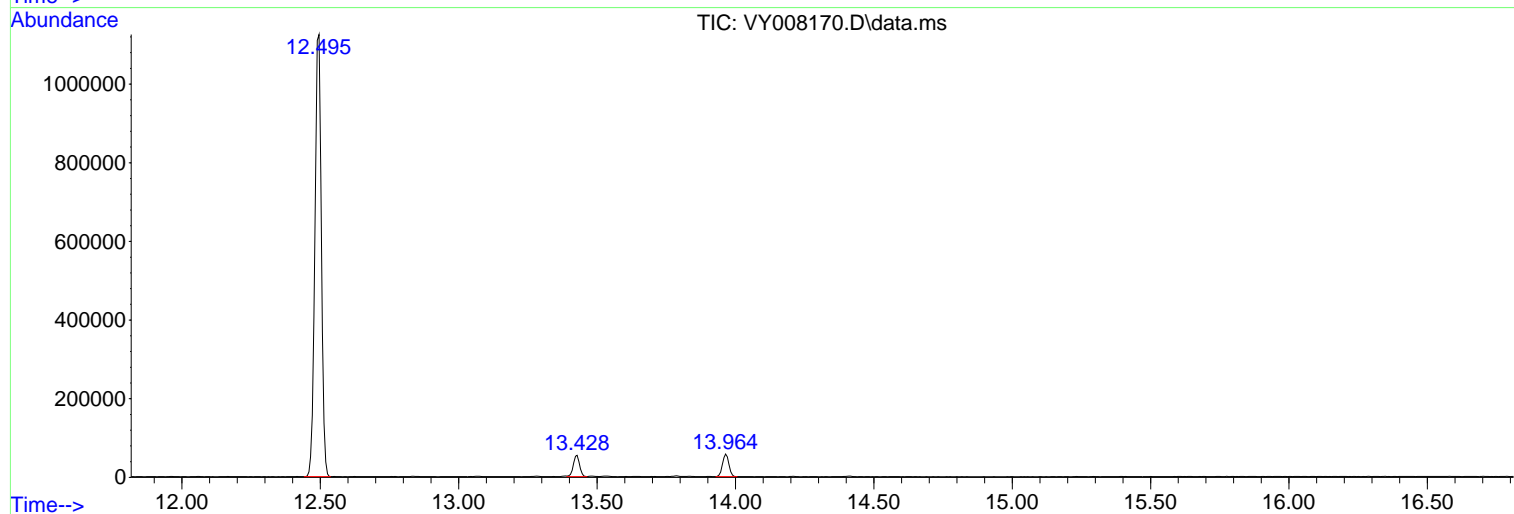
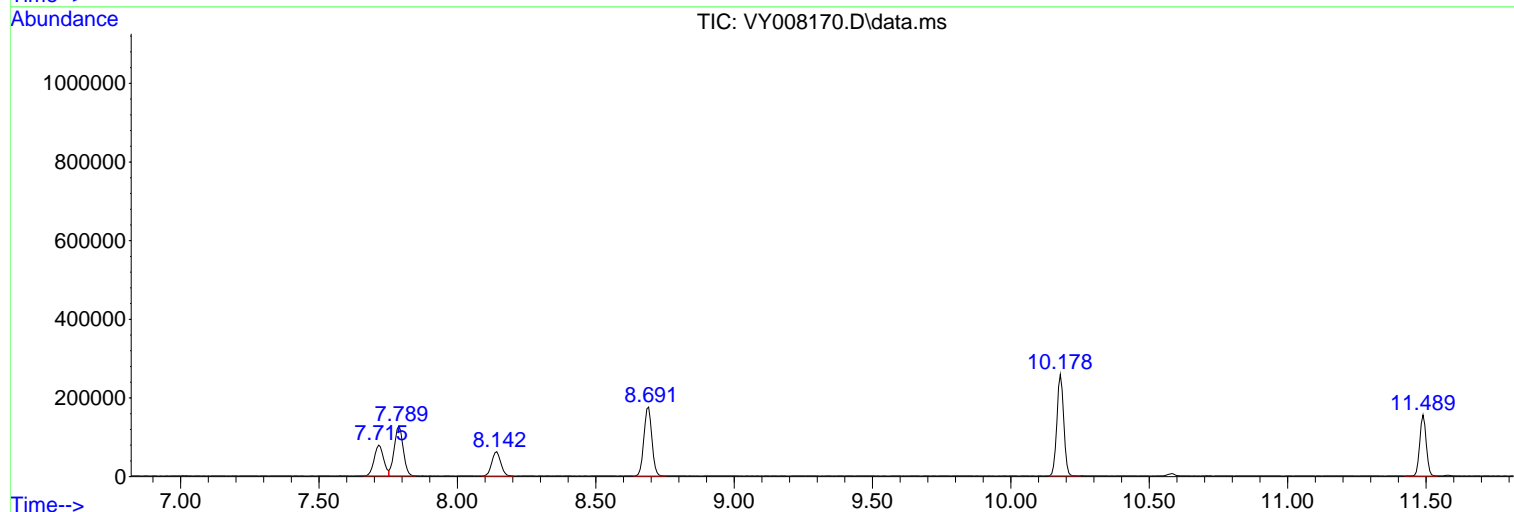
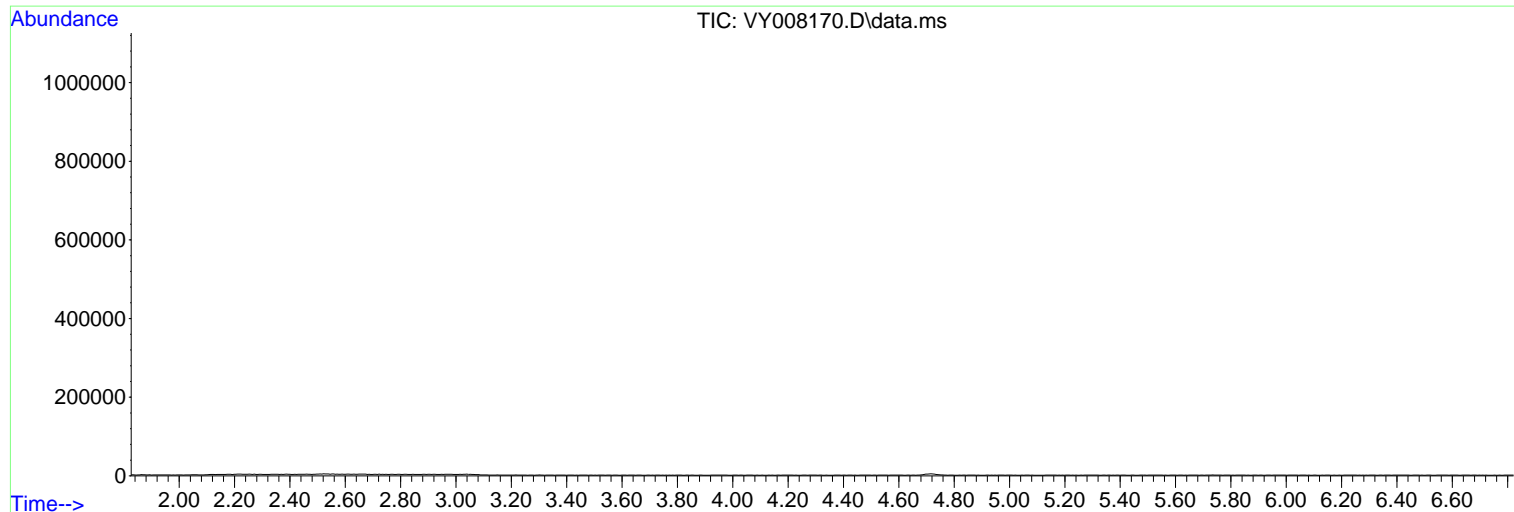
Sum of corrected areas: 3635089

Data Path : Z:\voasrv\HPCHEM1\MSVOA_Y\Data\VY040122\
Data File : VY008170.D
Acq On : 01 Apr 2022 18:48
Operator : SY/MD
Sample : N2220-13
Misc : 5.56g/5.0mL/MSVOA_Y/SOIL
ALS Vial : 23 Sample Multiplier: 1

Instrument :
MSVOA_Y
ClientSampleId :
A05140

Quant Method : Z:\voasrv\HPCHEM1\MSVOA_Y\methods\82Y032522S.M
Quant Title : SW846 8260

TIC Library : C:\Database\NIST20.L
TIC Integration Parameters: LSCINT.P



Data Path : Z:\voasrv\HPCHEM1\MSVOA_Y\Data\VY040122\
 Data File : VY008170.D
 Acq On : 01 Apr 2022 18:48
 Operator : SY/MD
 Sample : N2220-13
 Misc : 5.56g/5.0mL/MSVOA_Y/SOIL
 ALS Vial : 23 Sample Multiplier: 1

Instrument :
 MSVOA_Y
 ClientSampleId :
 A05140

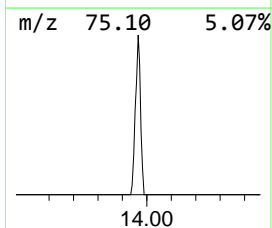
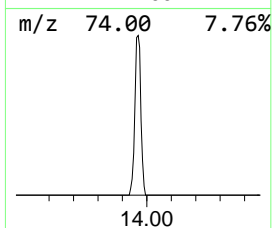
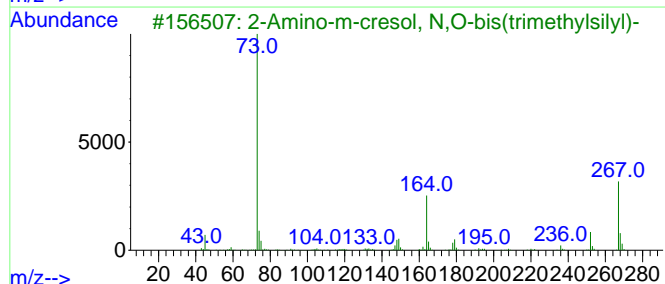
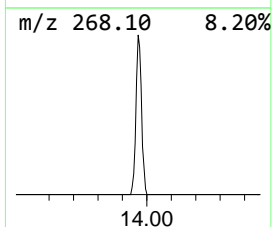
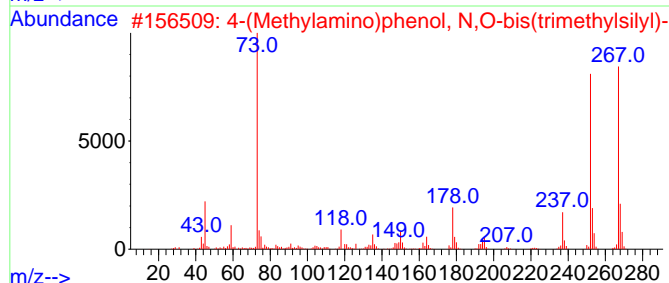
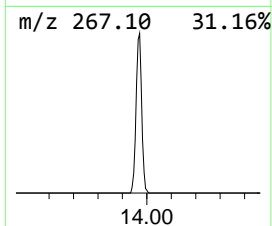
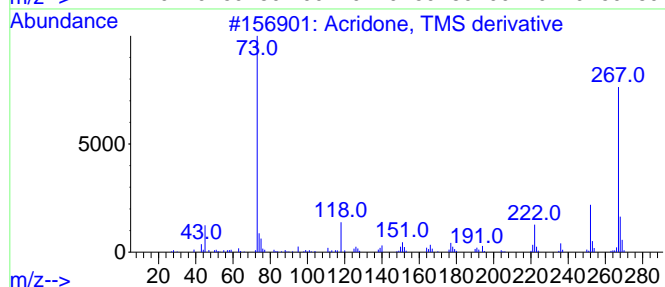
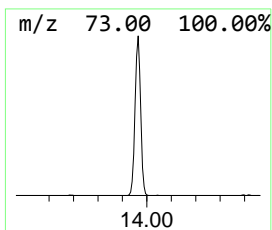
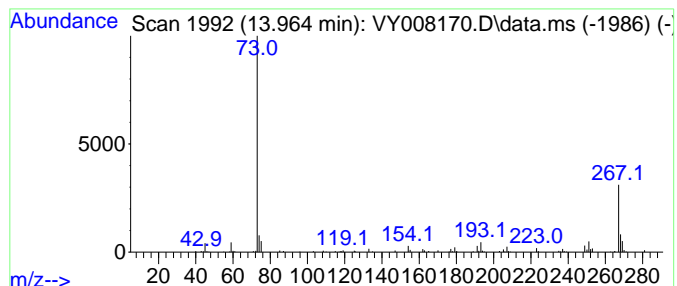
Quant Method : Z:\voasrv\HPCHEM1\MSVOA_Y\methods\82Y032522S.M
 Quant Title : SW846 8260

TIC Library : C:\Database\NIST20.L
 TIC Integration Parameters: LSCINT.P

 Peak Number 1 Acridone, TMS derivative Concentration Rank 1

R.T.	EstConc	Area	Relative to ISTD	R.T.
13.964	54.77 ug/l	91977	1,4-Dichlorobenzene-d4	13.428

Hit#	of 5	Tentative ID	MW	MolForm	CAS#	Qual
1		Acridone, TMS derivative	267	C16H17NOSi	1000478-16-0	53
2		4-(Methylamino)phenol, N,O-bis(t...	267	C13H25NOSi2	1000471-13-0	45
3		2-Amino-m-cresol, N,O-bis(trimet...	267	C13H25NOSi2	1000449-77-1	42
4		Tetrasiloxane, 1,1,3,3,5,5,7,7-o...	282	C8H26O3Si4	001000-05-1	39
5		Salicylic acid, 2TMS derivative	282	C13H22O3Si2	003789-85-3	38



Data Path : Z:\voasrv\HPCHEM1\MSVOA_Y\Data\VY040122\
Data File : VY008170.D
Acq On : 01 Apr 2022 18:48
Operator : SY/MD
Sample : N2220-13
Misc : 5.56g/5.0mL/MSVOA_Y/SOIL
ALS Vial : 23 Sample Multiplier: 1

Instrument :
MSVOA_Y
ClientSampleId :
A05140

Quant Method : Z:\voasrv\HPCHEM1\MSVOA_Y\methods\82Y032522S.M
Quant Title : SW846 8260

TIC Library : C:\Database\NIST0.L
TIC Integration Parameters: LSCINT.P

TIC Top Hit name	RT	EstConc	Units	Response	--Internal Standard--			
					#	RT	Resp	Conc
Acridone, TMS d...	13.964	54.8	ug/l	91977	4	13.428	83974	50.0