

Data Path : Z:\voasrv\HPCHEM1\MSVOA\_Y\Data\VY040224\  
 Data File : VY017819.D  
 Acq On : 02 Apr 2024 12:26  
 Operator : SY/MD  
 Sample : P1945-02  
 Misc : 5.02g/5.0mL/MSVOA\_Y/SOIL/B  
 ALS Vial : 9 Sample Multiplier: 1

Instrument :  
 MSVOA\_Y  
 ClientSampleId :  
 SEW-11RE

Quant Time: Apr 03 02:04:25 2024  
 Quant Method : Z:\voasrv\HPCHEM1\MSVOA\_Y\methods\82Y032924S.M  
 Quant Title : SW846 8260  
 QLast Update : Sat Mar 30 05:58:13 2024  
 Response via : Initial Calibration

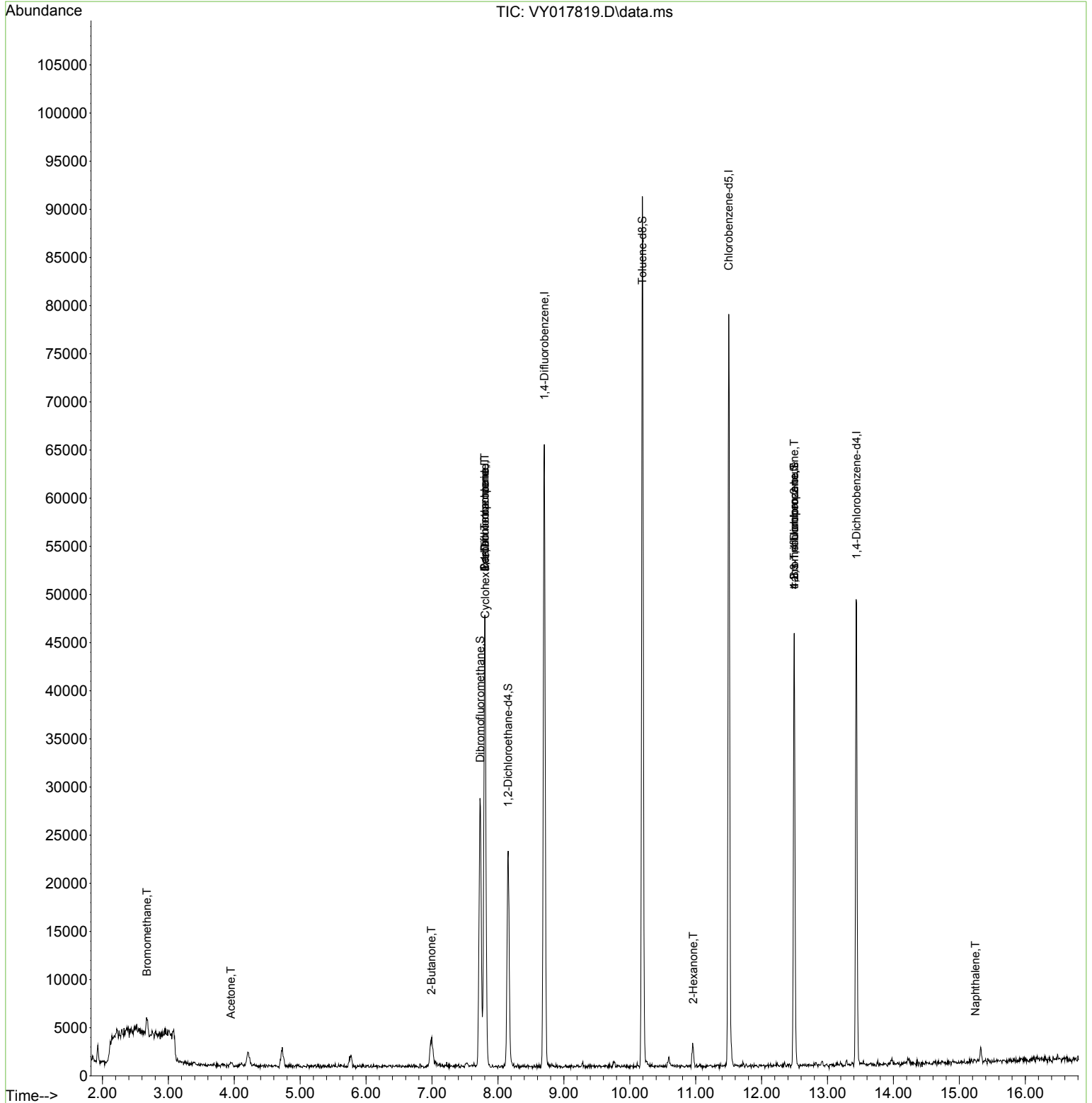
Compound	R.T.	QIon	Response	Conc	Units	Dev(Min)
-----						
Internal Standards						
1) Pentafluorobenzene	7.801	168	37308	50.000	ug/l	0.00
34) 1,4-Difluorobenzene	8.703	114	57058	50.000	ug/l	0.01
63) Chlorobenzene-d5	11.502	117	45025	50.000	ug/l	0.00
72) 1,4-Dichlorobenzene-d4	13.440	152	13431	50.000	ug/l	0.00
System Monitoring Compounds						
33) 1,2-Dichloroethane-d4	8.155	65	18035	55.864	ug/l	0.01
Spiked Amount	50.000	Range 50 - 163	Recovery	=	111.720%	
35) Dibromofluoromethane	7.734	113	20249	61.415	ug/l	0.02
Spiked Amount	50.000	Range 54 - 147	Recovery	=	122.840%	
50) Toluene-d8	10.191	98	62198	50.502	ug/l	0.00
Spiked Amount	50.000	Range 58 - 134	Recovery	=	101.000%	
62) 4-Bromofluorobenzene	12.495	95	13426	35.830	ug/l	0.00
Spiked Amount	50.000	Range 30 - 143	Recovery	=	71.660%	
Target Compounds						
						Qvalue
5) Bromomethane	2.674	94	912	1.772	ug/l	87
11) Tert butyl alcohol	4.960	59	41	Below Cal	#	88
16) Acetone	3.948	43	417	6.249	ug/l #	67
25) 2-Butanone	6.990	43	142	1.494	ug/l #	41
31) Cyclohexane	7.807	56	727	1.278	ug/l #	35
36) 1,1-Dichloropropene	7.801	75	2970	6.174	ug/l #	45
38) Carbon Tetrachloride	7.801	117	3517	7.042	ug/l #	17
51) 4-Methyl-2-Pentanone	10.081	43	62	Below Cal	#	86
59) 2-Hexanone	10.965	43	280	1.773	ug/l #	19
70) Styrene	12.056	104	30	Below Cal	#	27
74) N-amyl acetate	12.221	43	19	Below Cal	#	1
76) 1,2,3-Trichloropropane	12.495	75	6844	55.919	ug/l #	100
81) trans-1,4-Dichloro-2-b...	12.495	75	6844	108.548	ug/l #	16
95) Naphthalene	15.245	128	256	1.655	ug/l #	69
-----						

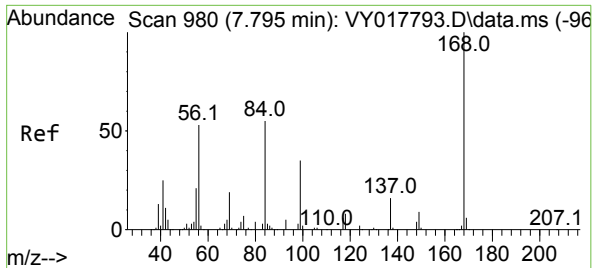
(#) = qualifier out of range (m) = manual integration (+) = signals summed

Data Path : Z:\voasrv\HPCHEM1\MSVOA\_Y\Data\VY040224\  
 Data File : VY017819.D  
 Acq On : 02 Apr 2024 12:26  
 Operator : SY/MD  
 Sample : P1945-02  
 Misc : 5.02g/5.0mL/MSVOA\_Y/SOIL/B  
 ALS Vial : 9 Sample Multiplier: 1

Instrument :  
 MSVOA\_Y  
 ClientSampleId :  
 SEW-11RE

Quant Time: Apr 03 02:04:25 2024  
 Quant Method : Z:\voasrv\HPCHEM1\MSVOA\_Y\methods\82Y032924S.M  
 Quant Title : SW846 8260  
 QLast Update : Sat Mar 30 05:58:13 2024  
 Response via : Initial Calibration

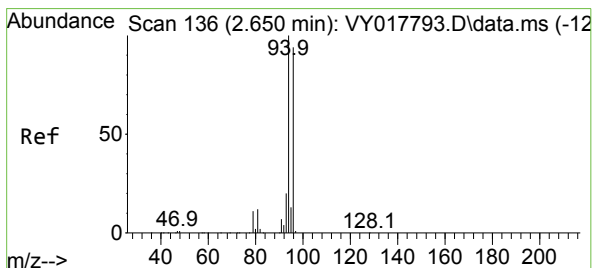
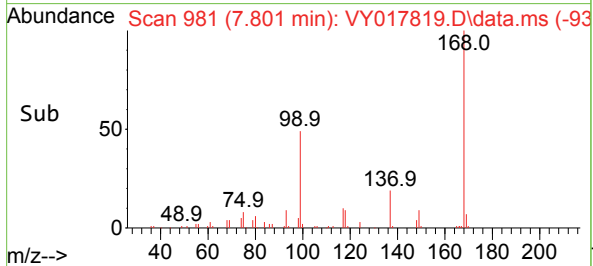
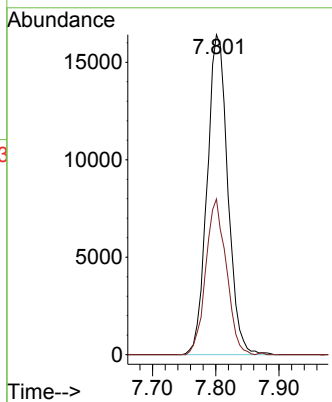
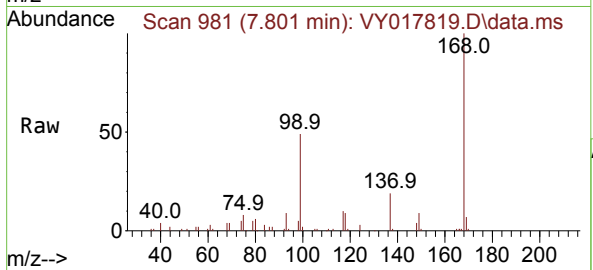




#1  
 Pentafluorobenzene  
 Concen: 50.000 ug/l  
 RT: 7.801 min Scan# 91  
 Delta R.T. 0.006 min  
 Lab File: VY017819.D  
 Acq: 02 Apr 2024 12:26

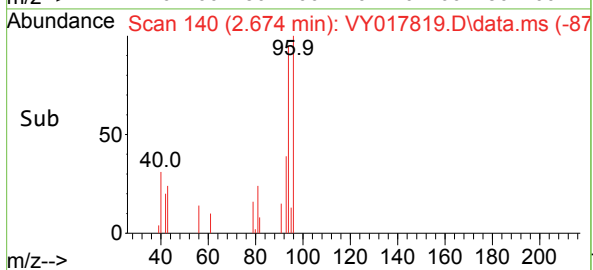
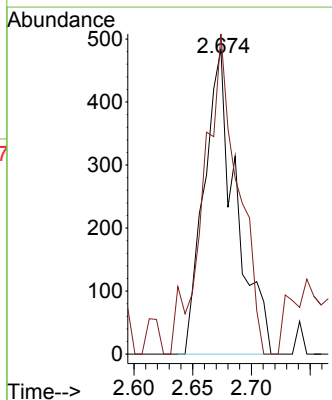
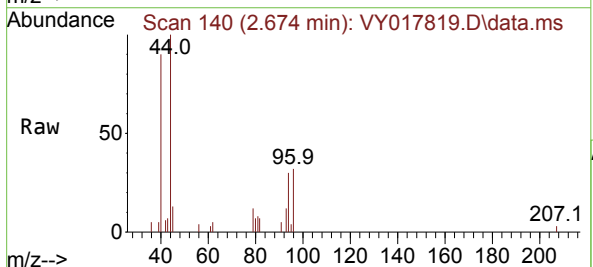
Instrument :  
 MSVOA\_Y  
 ClientSampleId :  
 SEW-11RE

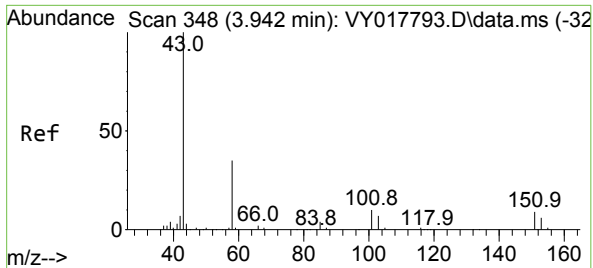
Tgt Ion:168 Resp: 37308  
 Ion Ratio Lower Upper  
 168 100  
 99 48.6 39.1 58.7



#5  
 Bromomethane  
 Concen: 1.772 ug/l  
 RT: 2.674 min Scan# 140  
 Delta R.T. 0.024 min  
 Lab File: VY017819.D  
 Acq: 02 Apr 2024 12:26

Tgt Ion: 94 Resp: 912  
 Ion Ratio Lower Upper  
 94 100  
 96 105.0 74.1 111.1

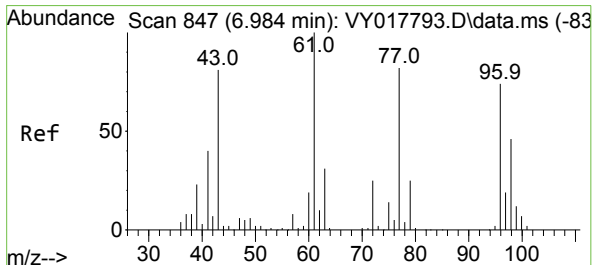
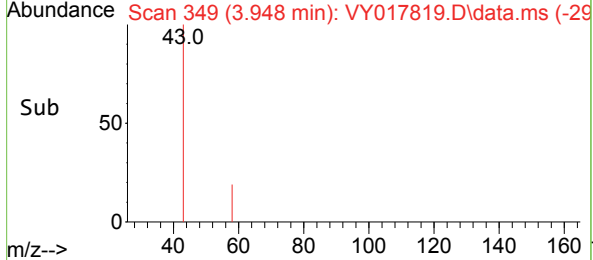
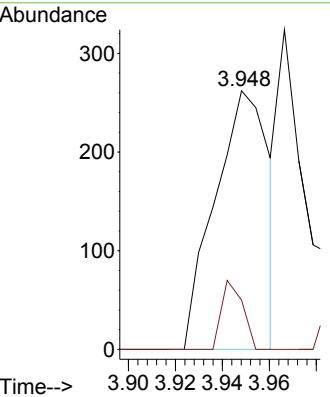
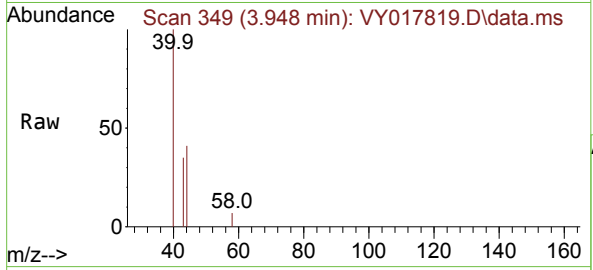




#16  
 Acetone  
 Concen: 6.249 ug/l  
 RT: 3.948 min Scan# 348  
 Delta R.T. 0.006 min  
 Lab File: VY017819.D  
 Acq: 02 Apr 2024 12:26

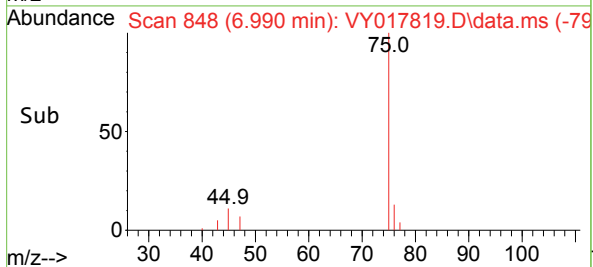
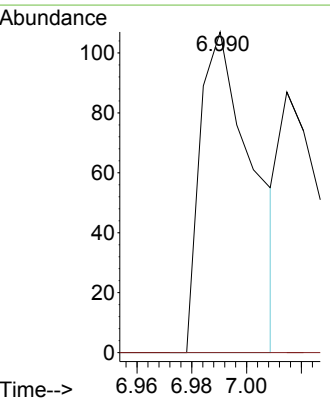
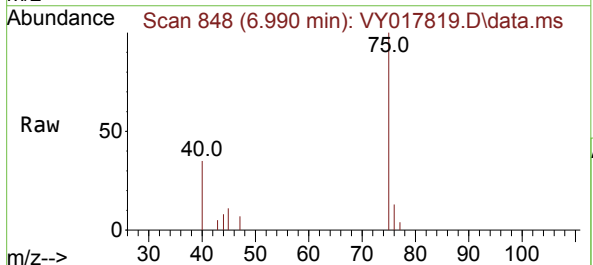
Instrument : MSVOA\_Y  
 ClientSampleId : SEW-11RE

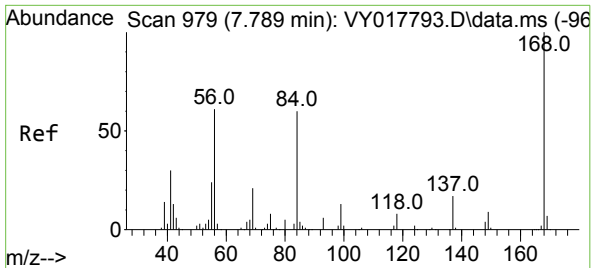
Tgt Ion: 43 Resp: 417  
 Ion Ratio Lower Upper  
 43 100  
 58 19.1 31.7 47.5#



#25  
 2-Butanone  
 Concen: 1.494 ug/l  
 RT: 6.990 min Scan# 848  
 Delta R.T. 0.006 min  
 Lab File: VY017819.D  
 Acq: 02 Apr 2024 12:26

Tgt Ion: 43 Resp: 142  
 Ion Ratio Lower Upper  
 43 100  
 72 0.0 27.3 40.9#



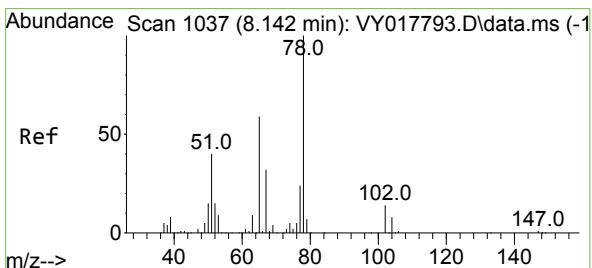
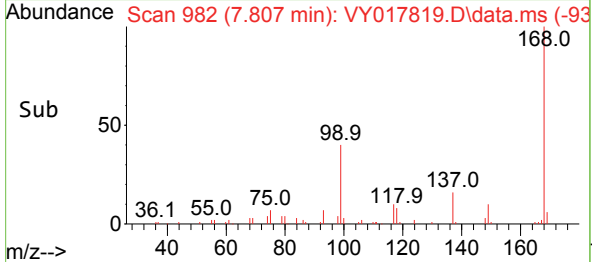
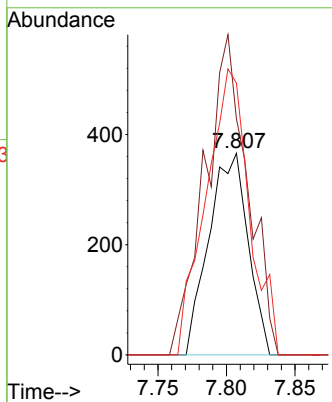
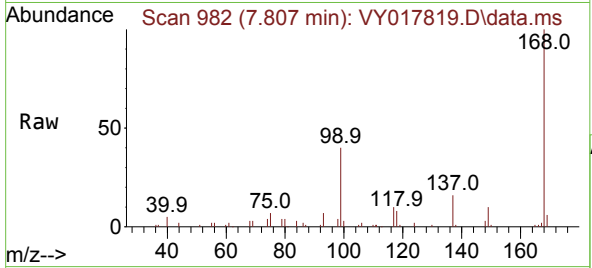


#31  
 Cyclohexane  
 Concen: 1.278 ug/l  
 RT: 7.807 min Scan# 911  
 Delta R.T. 0.018 min  
 Lab File: VY017819.D  
 Acq: 02 Apr 2024 12:26

Instrument :  
 MSVOA\_Y  
 ClientSampleId :  
 SEW-11RE

Tgt Ion: 56 Resp: 727

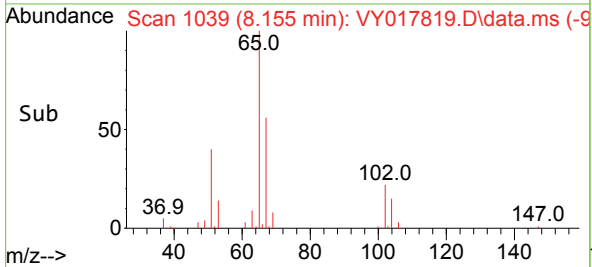
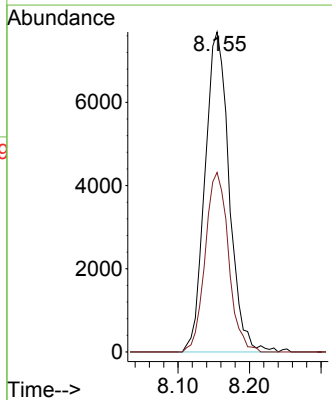
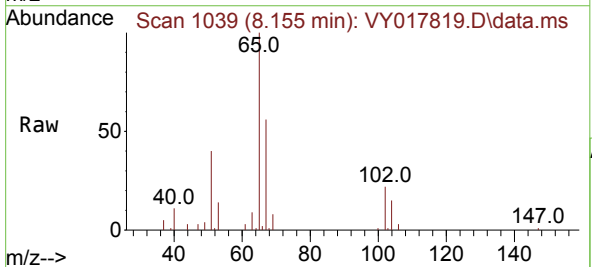
Ion	Ratio	Lower	Upper
56	100		
69	116.9	28.7	43.1#
84	134.7	77.7	116.5#

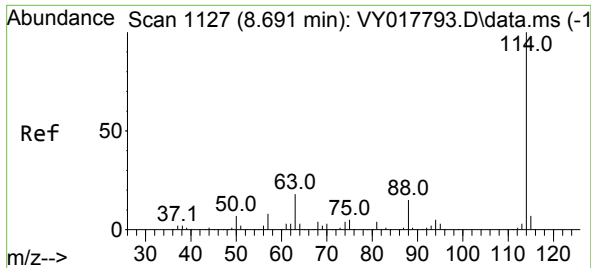


#33  
 1,2-Dichloroethane-d4  
 Concen: 55.864 ug/l  
 RT: 8.155 min Scan# 1039  
 Delta R.T. 0.012 min  
 Lab File: VY017819.D  
 Acq: 02 Apr 2024 12:26

Tgt Ion: 65 Resp: 18035

Ion	Ratio	Lower	Upper
65	100		
67	54.2	0.0	109.6

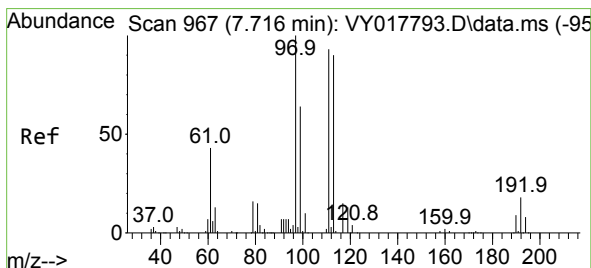
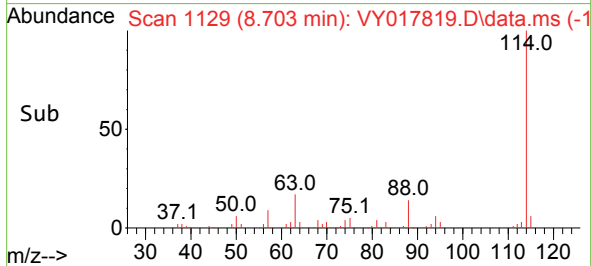
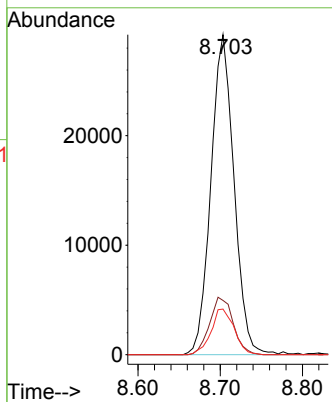
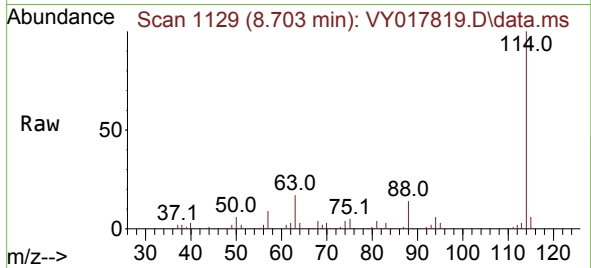




#34  
 1,4-Difluorobenzene  
 Concen: 50.000 ug/l  
 RT: 8.703 min Scan# 1129  
 Delta R.T. 0.012 min  
 Lab File: VY017819.D  
 Acq: 02 Apr 2024 12:26

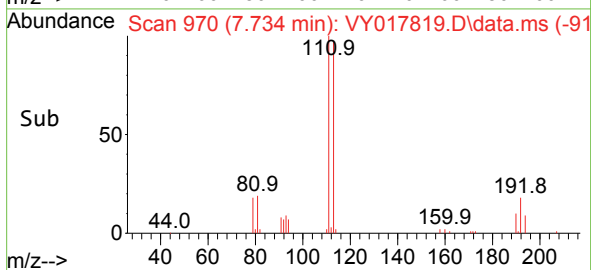
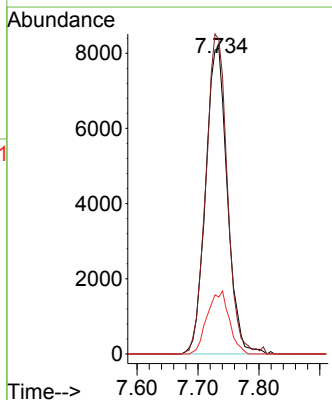
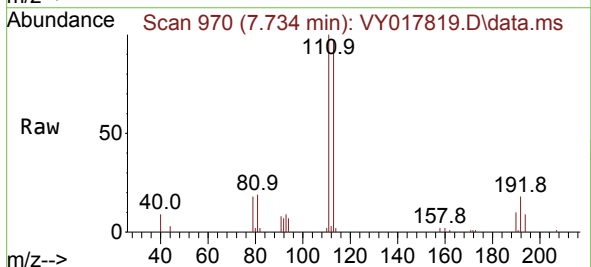
Instrument : MSVOA\_Y  
 ClientSampleId : SEW-11RE

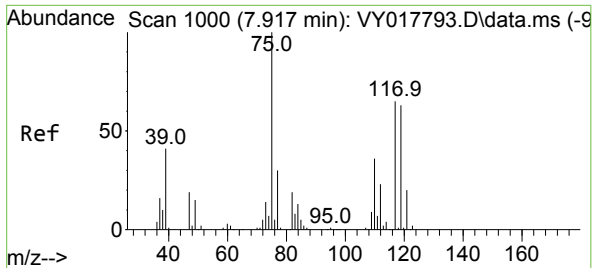
Tgt Ion	Resp	Lower	Upper
114	57058		
63	17.0	0.0	35.0
88	14.2	0.0	27.2



#35  
 Dibromofluoromethane  
 Concen: 61.415 ug/l  
 RT: 7.734 min Scan# 970  
 Delta R.T. 0.018 min  
 Lab File: VY017819.D  
 Acq: 02 Apr 2024 12:26

Tgt Ion	Resp	Lower	Upper
113	20249		
111	102.8	82.2	123.4
192	20.7	15.9	23.9

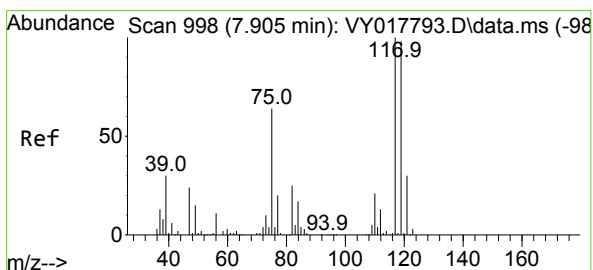
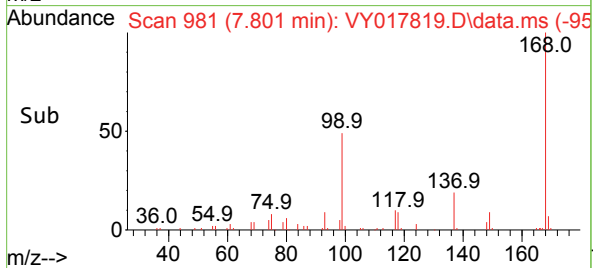
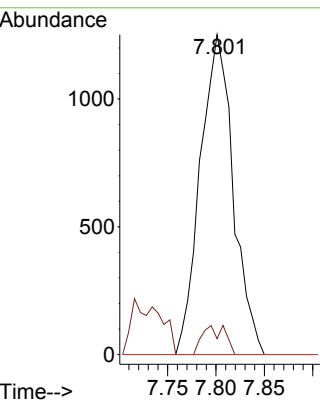
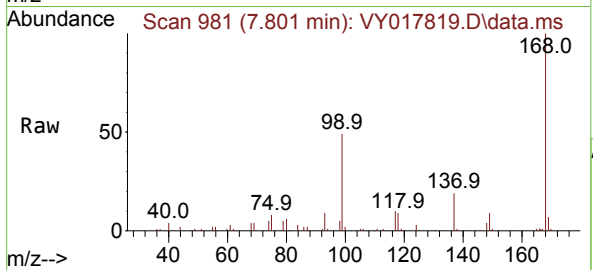




#36  
 1,1-Dichloropropene  
 Concen: 6.174 ug/l  
 RT: 7.801 min Scan# 981  
 Delta R.T. -0.116 min  
 Lab File: VY017819.D  
 Acq: 02 Apr 2024 12:26

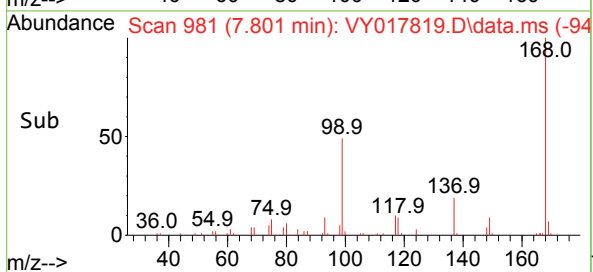
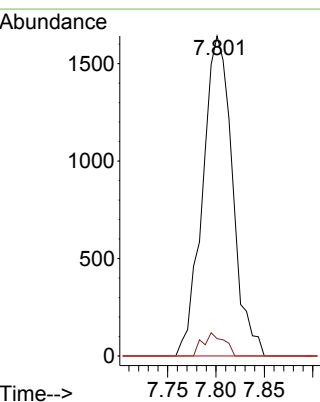
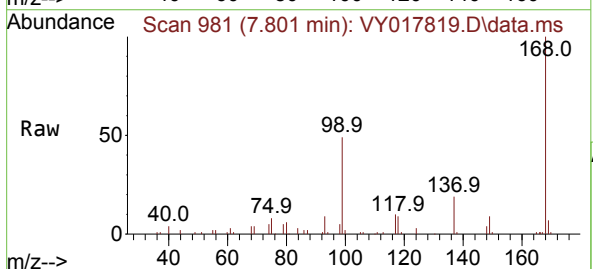
Instrument : MSVOA\_Y  
 ClientSampleId : SEW-11RE

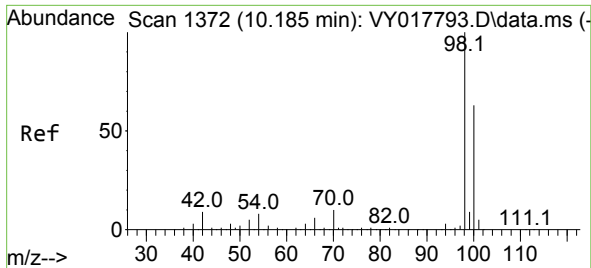
Tgt Ion	Resp	Lower	Upper
75	2970		
75	100		
110	6.2	19.0	57.0#
77	0.0	25.3	37.9#



#38  
 Carbon Tetrachloride  
 Concen: 7.042 ug/l  
 RT: 7.801 min Scan# 981  
 Delta R.T. -0.104 min  
 Lab File: VY017819.D  
 Acq: 02 Apr 2024 12:26

Tgt Ion	Resp	Lower	Upper
117	3517		
117	100		
119	5.4	75.8	113.6#
121	0.0	24.0	36.0#

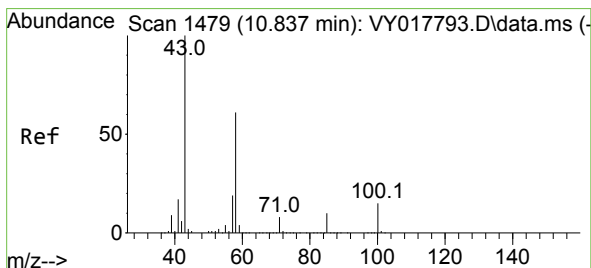
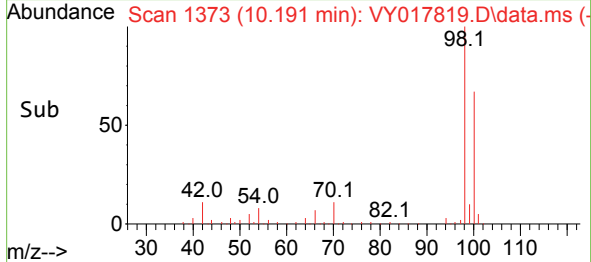
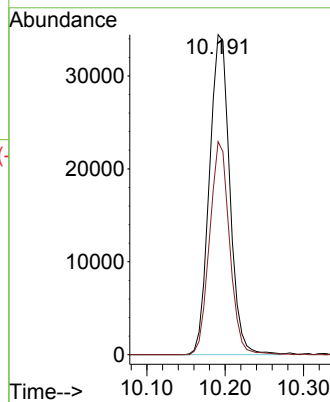
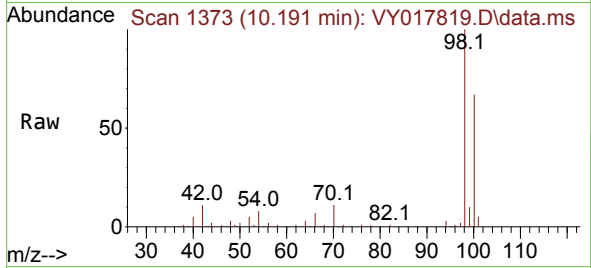




#50  
 Toluene-d8  
 Concen: 50.502 ug/l  
 RT: 10.191 min Scan# 11  
 Delta R.T. 0.006 min  
 Lab File: VY017819.D  
 Acq: 02 Apr 2024 12:26

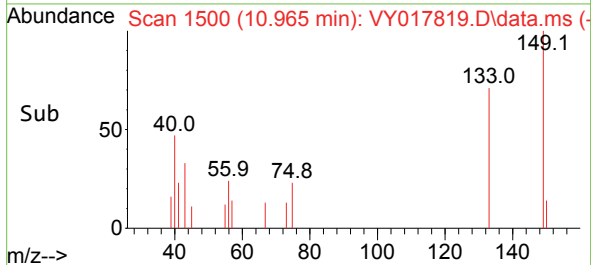
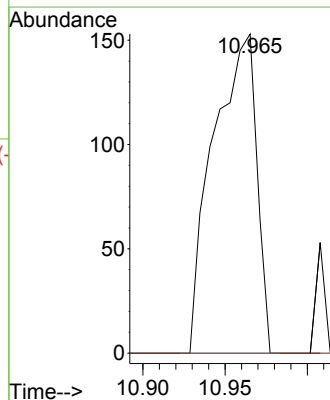
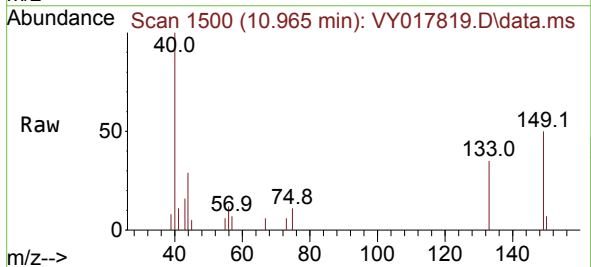
Instrument :  
 MSVOA\_Y  
 ClientSampleId :  
 SEW-11RE

Tgt Ion: 98 Resp: 62198  
 Ion Ratio Lower Upper  
 98 100  
 100 65.2 52.0 78.0

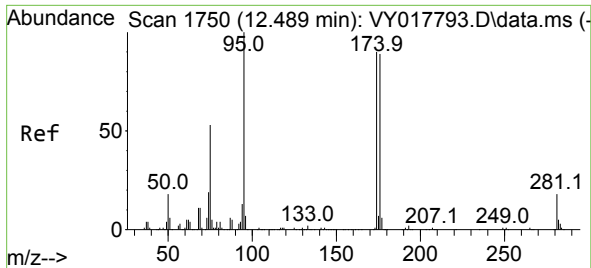


#59  
 2-Hexanone  
 Concen: 1.773 ug/l  
 RT: 10.965 min Scan# 1500  
 Delta R.T. 0.128 min  
 Lab File: VY017819.D  
 Acq: 02 Apr 2024 12:26

Tgt Ion: 43 Resp: 280  
 Ion Ratio Lower Upper  
 43 100  
 58 0.0 31.4 94.0#





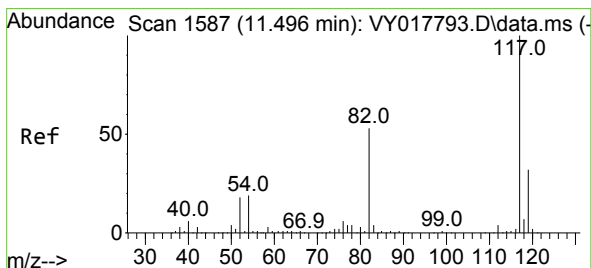
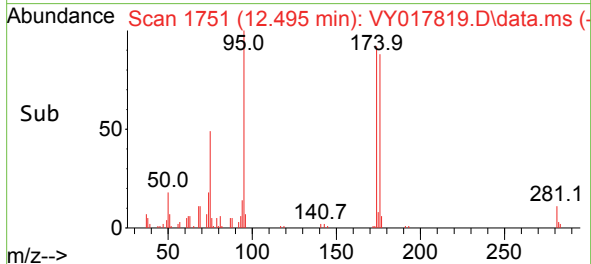
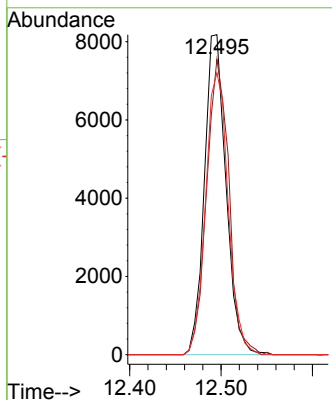
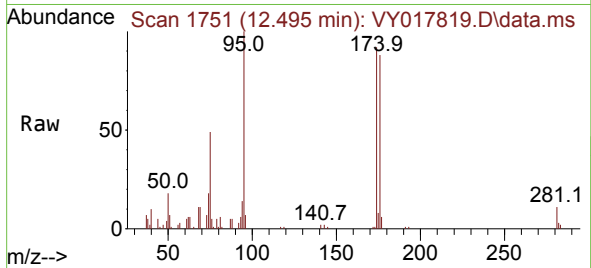


#62  
 4-Bromofluorobenzene  
 Concen: 35.830 ug/l  
 RT: 12.495 min Scan# 1751  
 Delta R.T. 0.006 min  
 Lab File: VY017819.D  
 Acq: 02 Apr 2024 12:26

Instrument : MSVOA\_Y  
 ClientSampleId : SEW-11RE

Tgt Ion: 95 Resp: 13426

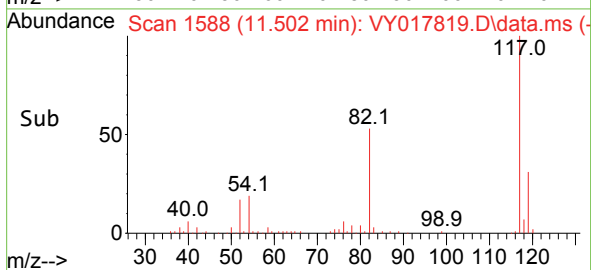
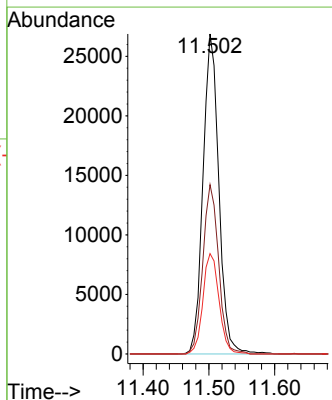
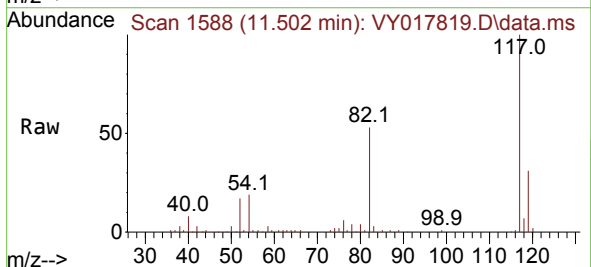
Ion	Ratio	Lower	Upper
95	100		
174	94.6	0.0	175.6
176	92.1	0.0	171.4

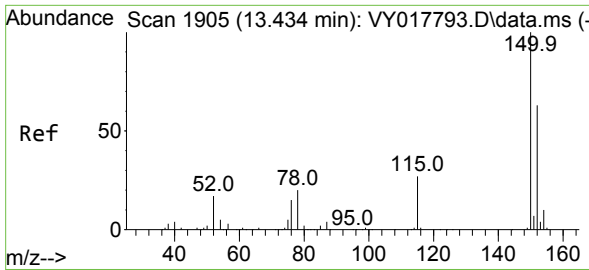


#63  
 Chlorobenzene-d5  
 Concen: 50.000 ug/l  
 RT: 11.502 min Scan# 1588  
 Delta R.T. 0.006 min  
 Lab File: VY017819.D  
 Acq: 02 Apr 2024 12:26

Tgt Ion: 117 Resp: 45025

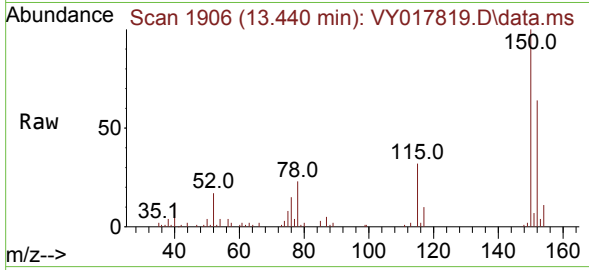
Ion	Ratio	Lower	Upper
117	100		
82	52.9	42.4	63.6
119	31.3	25.9	38.9



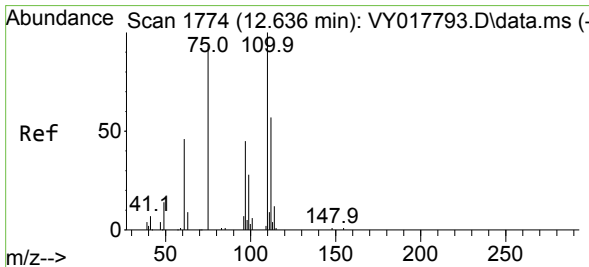
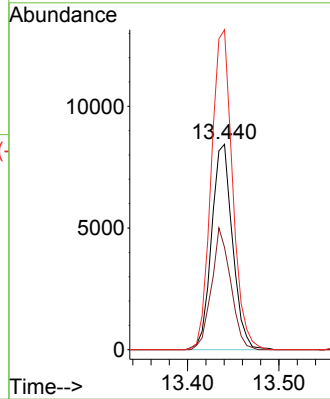
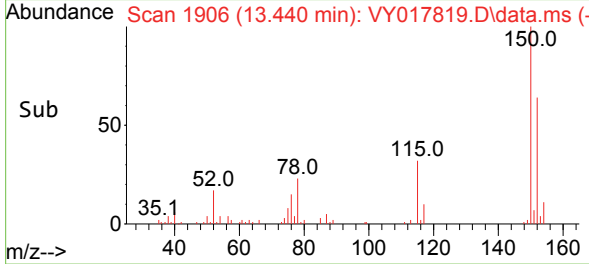


#72  
 1,4-Dichlorobenzene-d4  
 Concen: 50.000 ug/l  
 RT: 13.440 min Scan# 1906  
 Delta R.T. 0.006 min  
 Lab File: VY017819.D  
 Acq: 02 Apr 2024 12:26

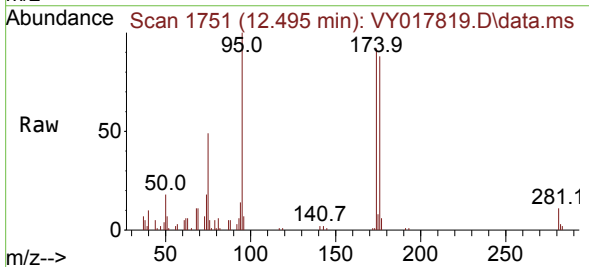
Instrument : MSVOA\_Y  
 ClientSampleId : SEW-11RE



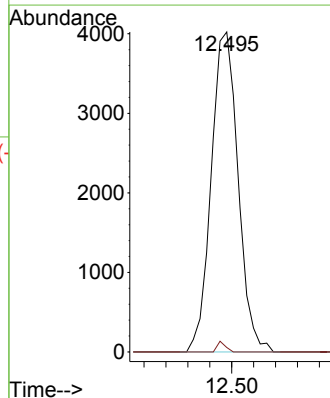
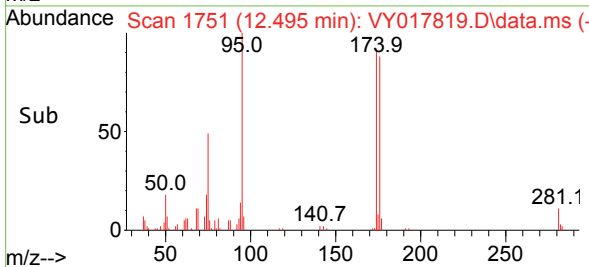
Tgt Ion:152 Resp: 13431  
 Ion Ratio Lower Upper  
 152 100  
 115 54.3 28.2 84.7  
 150 157.9 0.0 345.6

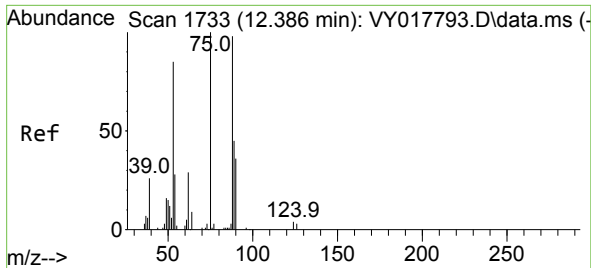


#76  
 1,2,3-Trichloropropane  
 Concen: 55.919 ug/l  
 RT: 12.495 min Scan# 1751  
 Delta R.T. -0.140 min  
 Lab File: VY017819.D  
 Acq: 02 Apr 2024 12:26



Tgt Ion: 75 Resp: 6844  
 Ion Ratio Lower Upper  
 75 100  
 77 1.0 0.0 0.0#

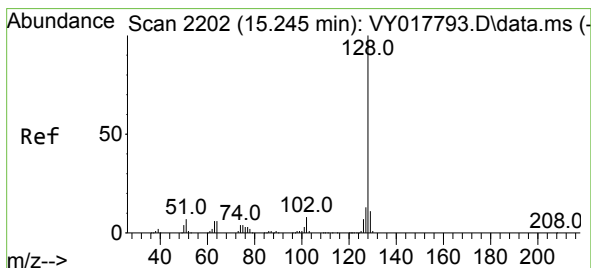
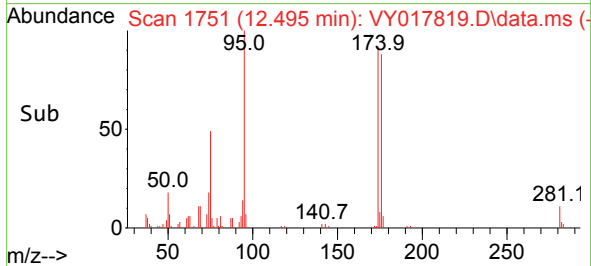
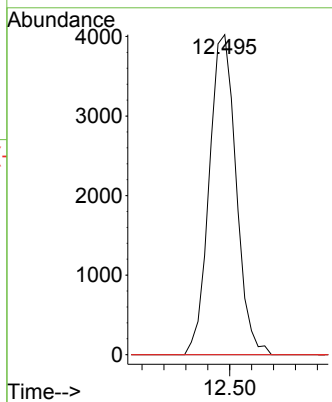
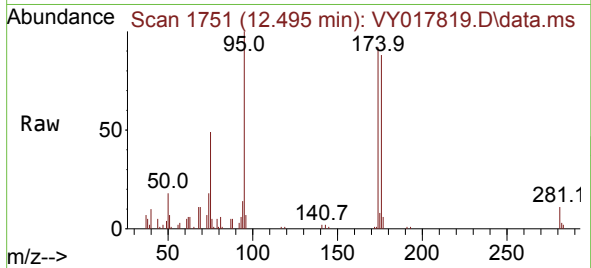




#81  
 trans-1,4-Dichloro-2-butene  
 Concen: 108.548 ug/l  
 RT: 12.495 min Scan# 1751  
 Delta R.T. 0.109 min  
 Lab File: VY017819.D  
 Acq: 02 Apr 2024 12:26

Instrument : MSVOA\_Y  
 ClientSampleId : SEW-11RE

Tgt Ion	Resp	Lower	Upper
75	6844		
53	0.0	66.8	100.2#
89	0.0	35.8	53.6#



#95  
 Naphthalene  
 Concen: 1.655 ug/l  
 RT: 15.245 min Scan# 2202  
 Delta R.T. -0.000 min  
 Lab File: VY017819.D  
 Acq: 02 Apr 2024 12:26

Tgt Ion	Resp	Lower	Upper
128	256		
127	0.0	10.6	16.0#
129	0.0	8.6	13.0#

