

Data Path : Z:\voasrv\HPCHEM1\MSVOA_Y\Data\VY040225\
 Data File : VY021749.D
 Acq On : 02 Apr 2025 10:19
 Operator : SY/MD
 Sample : VY0402SBL01
 Misc : 5.00g/5.0mL/MSVOA_Y/SOIL
 ALS Vial : 3 Sample Multiplier: 1

Instrument :
 MSVOA_Y
 ClientSampleId :
 VY0402SBL01

Quant Time: Apr 03 03:34:26 2025
 Quant Method : Z:\voasrv\HPCHEM1\MSVOA_Y\methods\82Y032725S.M
 Quant Title : SW846 8260
 QLast Update : Fri Mar 28 02:30:29 2025
 Response via : Initial Calibration

Compound	R.T.	QIon	Response	Conc Units	Dev(Min)

Internal Standards					
1) Pentafluorobenzene	7.707	168	243767	50.000 ug/l	0.00
34) 1,4-Difluorobenzene	8.615	114	452818	50.000 ug/l	0.00
63) Chlorobenzene-d5	11.420	117	417006	50.000 ug/l	0.00
72) 1,4-Dichlorobenzene-d4	13.346	152	165766	50.000 ug/l	0.00

System Monitoring Compounds					
33) 1,2-Dichloroethane-d4	8.061	65	142242	53.856 ug/l	0.00
Spiked Amount	50.000	Range	50 - 163	Recovery =	107.720%
35) Dibromofluoromethane	7.634	113	153366	52.212 ug/l	0.00
Spiked Amount	50.000	Range	54 - 147	Recovery =	104.420%
50) Toluene-d8	10.109	98	556095	49.764 ug/l	0.00
Spiked Amount	50.000	Range	58 - 134	Recovery =	99.520%
62) 4-Bromofluorobenzene	12.407	95	175264	46.369 ug/l	0.00
Spiked Amount	50.000	Range	30 - 143	Recovery =	92.740%

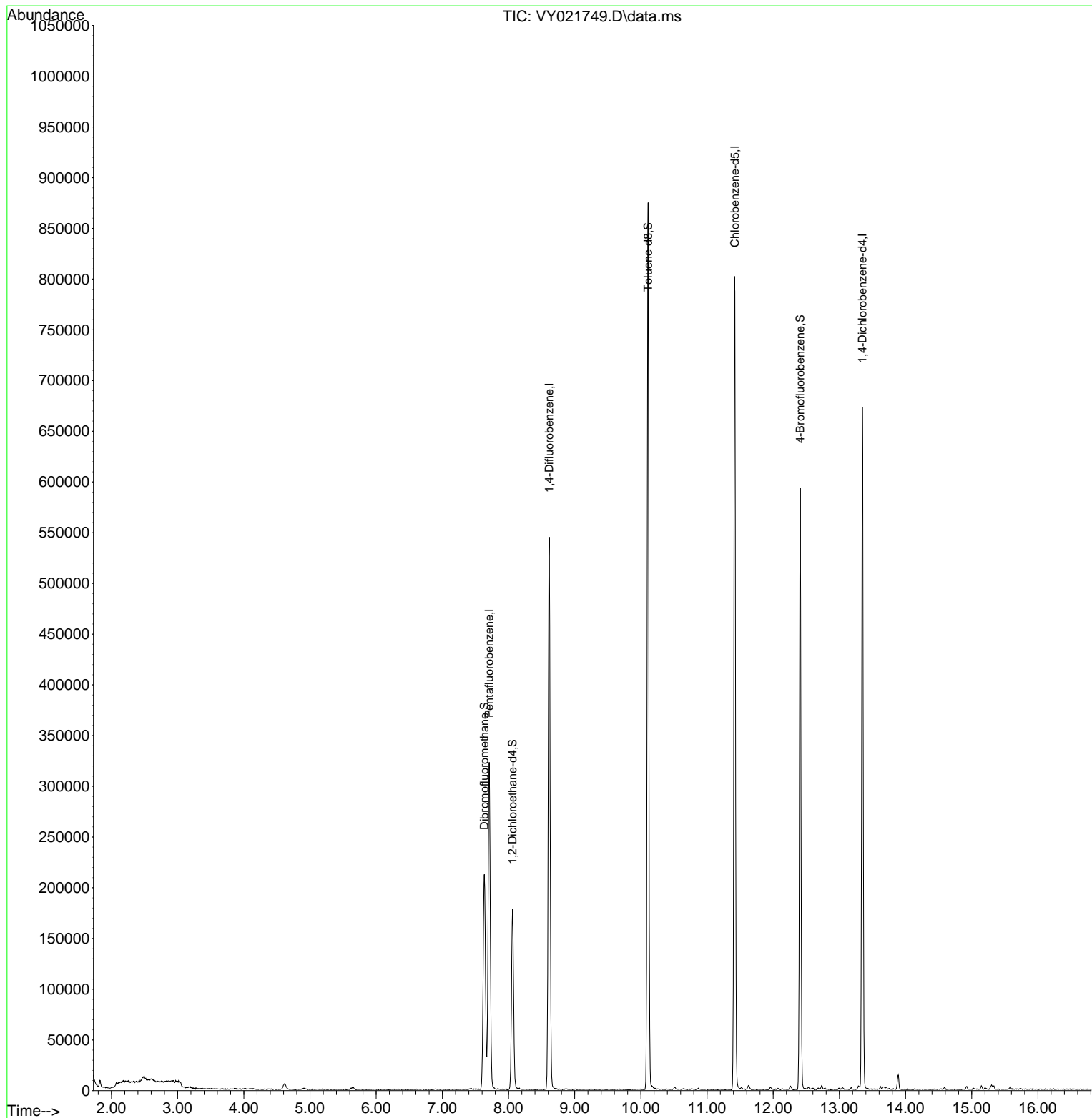
Target Compounds	Qvalue

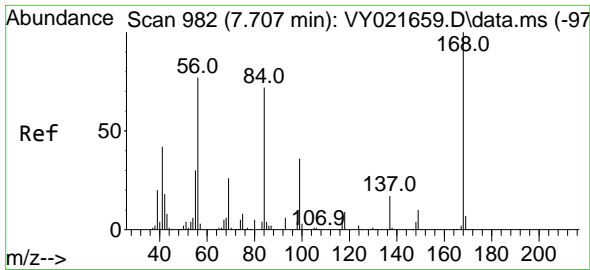
(#) = qualifier out of range (m) = manual integration (+) = signals summed

Data Path : Z:\voasrv\HPCHEM1\MSVOA_Y\Data\VY040225\
 Data File : VY021749.D
 Acq On : 02 Apr 2025 10:19
 Operator : SY/MD
 Sample : VY0402SBL01
 Misc : 5.00g/5.0mL/MSVOA_Y/SOIL
 ALS Vial : 3 Sample Multiplier: 1

Instrument :
 MSVOA_Y
 ClientSampleId :
 VY0402SBL01

Quant Time: Apr 03 03:34:26 2025
 Quant Method : Z:\voasrv\HPCHEM1\MSVOA_Y\methods\82Y032725S.M
 Quant Title : SW846 8260
 QLast Update : Fri Mar 28 02:30:29 2025
 Response via : Initial Calibration

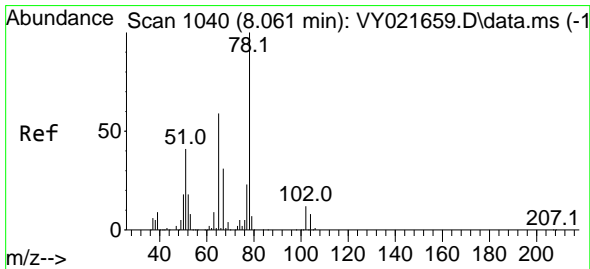
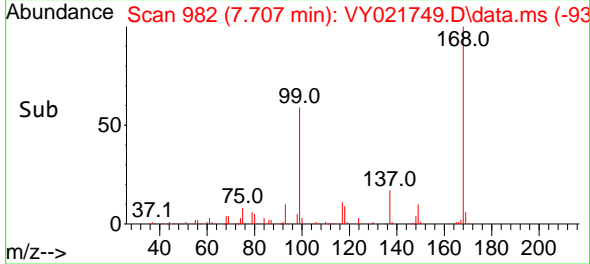
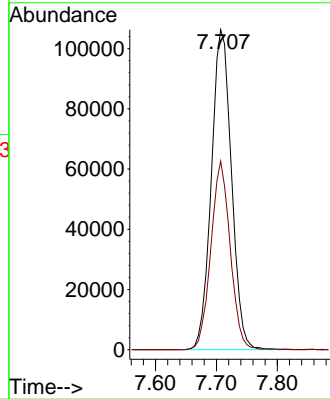
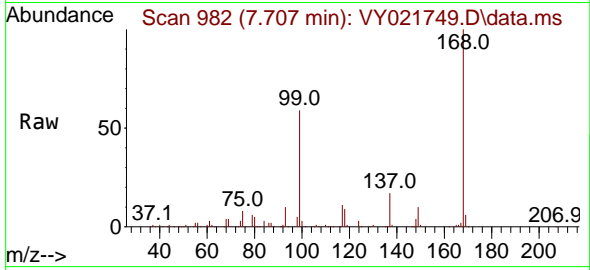




#1
 Pentafluorobenzene
 Concen: 50.000 ug/l
 RT: 7.707 min Scan# 91
 Delta R.T. 0.000 min
 Lab File: VY021749.D
 Acq: 02 Apr 2025 10:19

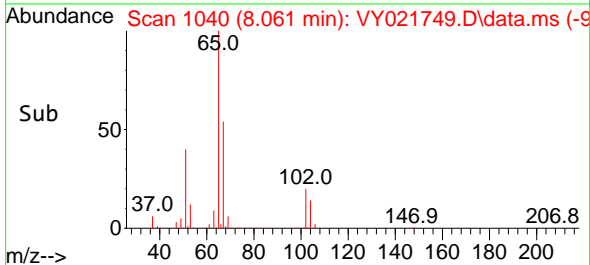
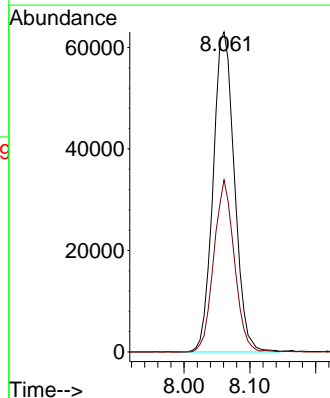
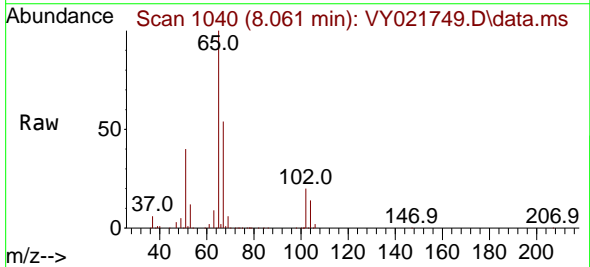
Instrument :
 MSVOA_Y
 ClientSampleId :
 VY0402SBL01

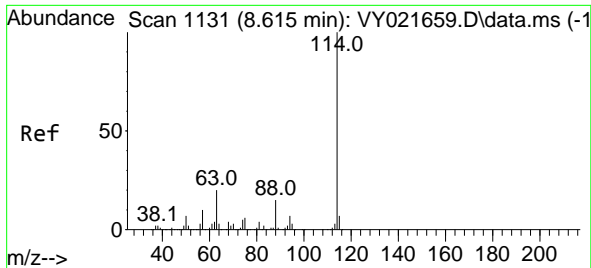
Tgt Ion:168 Resp: 243767
 Ion Ratio Lower Upper
 168 100
 99 59.0 46.7 70.1



#33
 1,2-Dichloroethane-d4
 Concen: 53.856 ug/l
 RT: 8.061 min Scan# 1040
 Delta R.T. 0.000 min
 Lab File: VY021749.D
 Acq: 02 Apr 2025 10:19

Tgt Ion: 65 Resp: 142242
 Ion Ratio Lower Upper
 65 100
 67 51.7 0.0 104.6

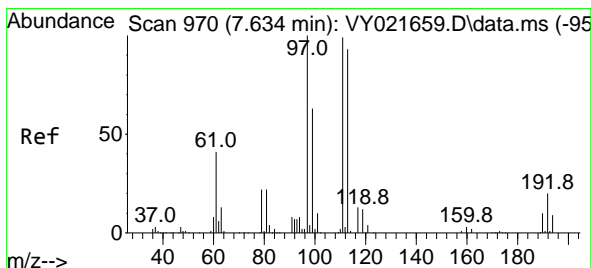
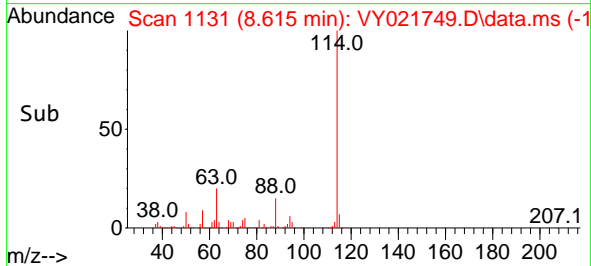
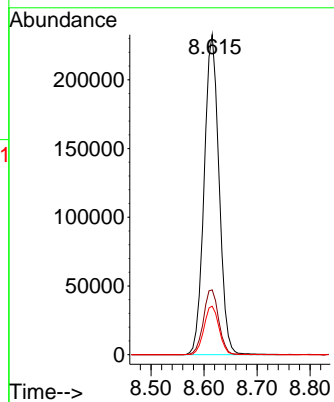
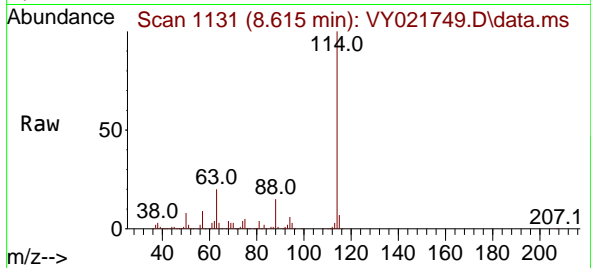




#34
 1,4-Difluorobenzene
 Concen: 50.000 ug/l
 RT: 8.615 min Scan# 1131
 Delta R.T. 0.000 min
 Lab File: VY021749.D
 Acq: 02 Apr 2025 10:19

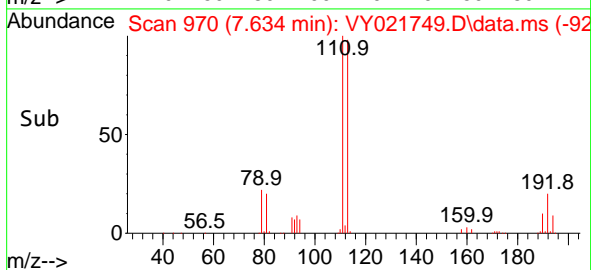
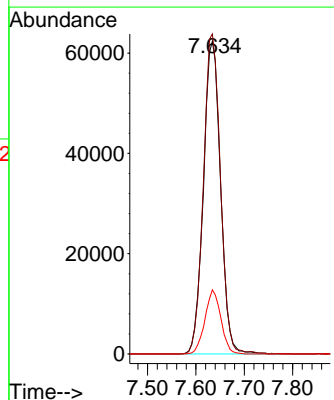
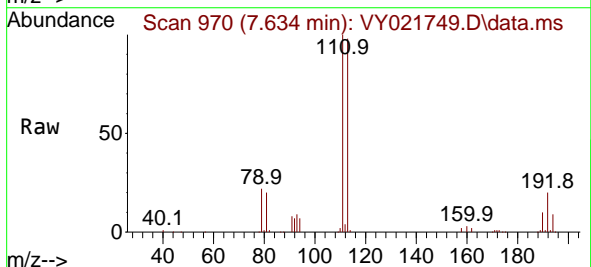
Instrument : MSVOA_Y
 ClientSampleId : VY0402SBL01

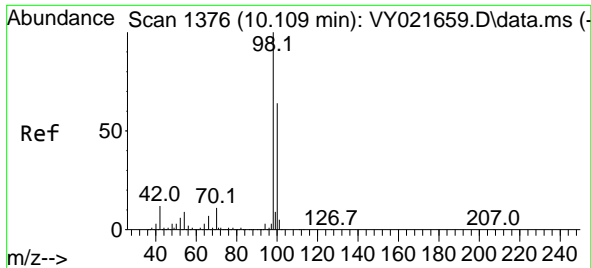
Tgt Ion	Resp	Lower	Upper
114	452818		
63	20.3	0.0	40.2
88	15.2	0.0	29.8



#35
 Dibromofluoromethane
 Concen: 52.212 ug/l
 RT: 7.634 min Scan# 970
 Delta R.T. 0.000 min
 Lab File: VY021749.D
 Acq: 02 Apr 2025 10:19

Tgt Ion	Resp	Lower	Upper
113	153366		
111	101.8	82.6	123.8
192	19.1	16.2	24.4

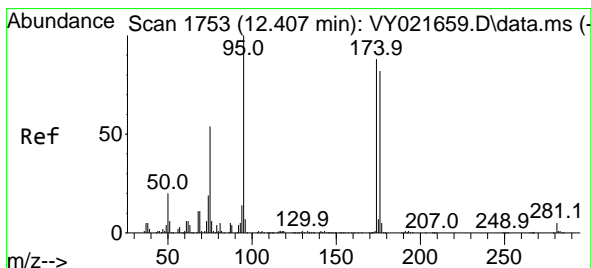
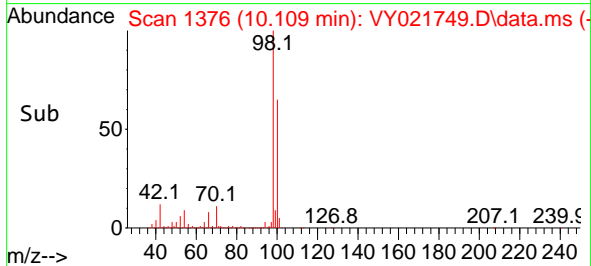
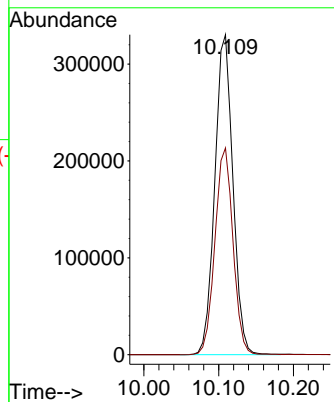
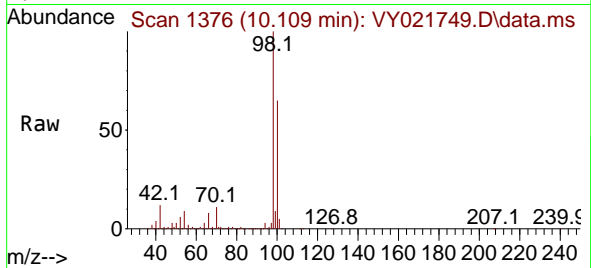




#50
 Toluene-d8
 Concen: 49.764 ug/l
 RT: 10.109 min Scan# 11
 Delta R.T. 0.000 min
 Lab File: VY021749.D
 Acq: 02 Apr 2025 10:19

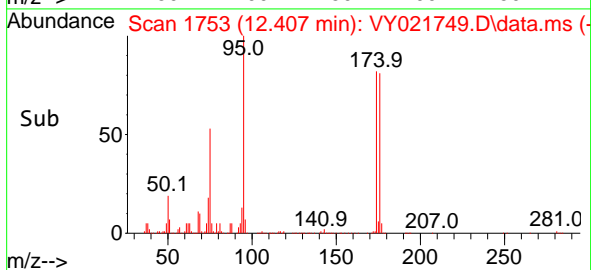
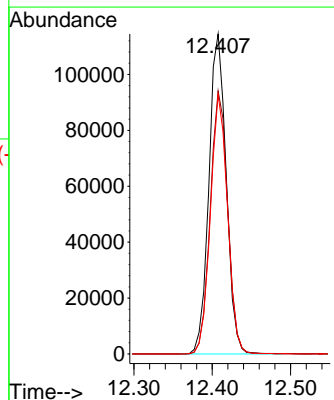
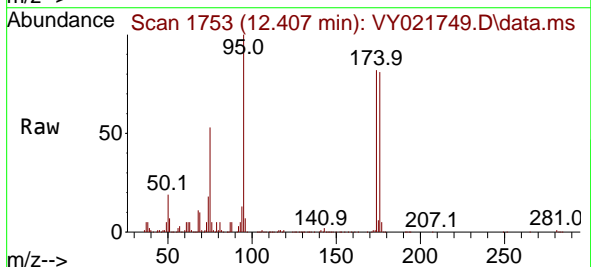
Instrument :
 MSVOA_Y
 ClientSampleId :
 VY0402SBL01

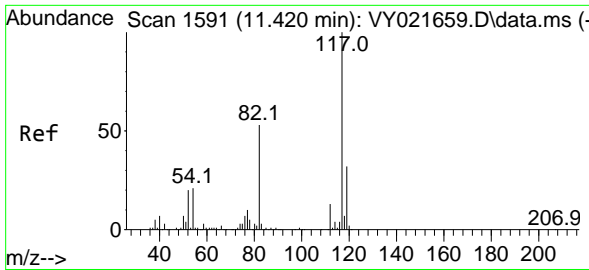
Tgt Ion: 98 Resp: 556095
 Ion Ratio Lower Upper
 98 100
 100 64.7 52.1 78.1



#62
 4-Bromofluorobenzene
 Concen: 46.369 ug/l
 RT: 12.407 min Scan# 1753
 Delta R.T. 0.000 min
 Lab File: VY021749.D
 Acq: 02 Apr 2025 10:19

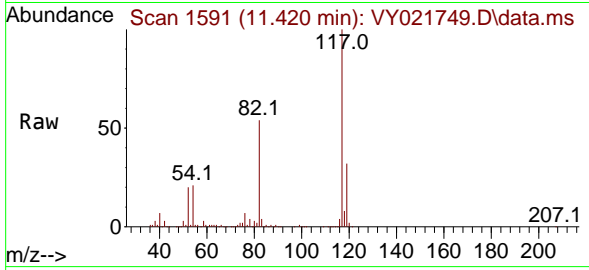
Tgt Ion: 95 Resp: 175264
 Ion Ratio Lower Upper
 95 100
 174 83.1 0.0 170.8
 176 80.2 0.0 162.0





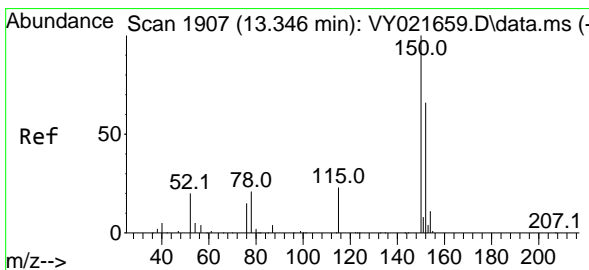
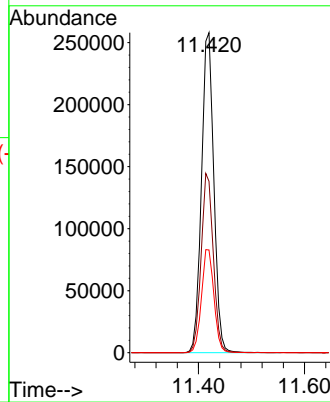
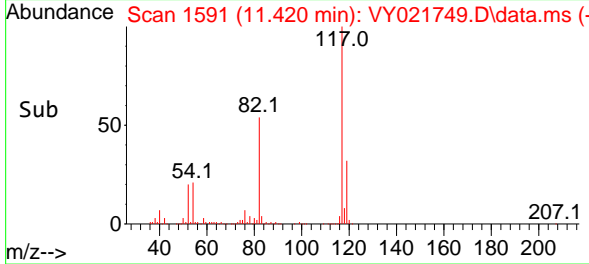
#63
 Chlorobenzene-d5
 Concen: 50.000 ug/l
 RT: 11.420 min Scan# 111
 Delta R.T. 0.000 min
 Lab File: VY021749.D
 Acq: 02 Apr 2025 10:19

Instrument : MSVOA_Y
 ClientSampleId : VY0402SBL01

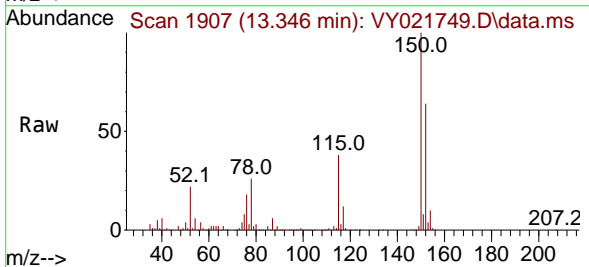


Tgt Ion:117 Resp: 417006

Ion	Ratio	Lower	Upper
117	100		
82	53.6	42.8	64.2
119	32.1	25.7	38.5



#72
 1,4-Dichlorobenzene-d4
 Concen: 50.000 ug/l
 RT: 13.346 min Scan# 1907
 Delta R.T. 0.000 min
 Lab File: VY021749.D
 Acq: 02 Apr 2025 10:19



Tgt Ion:152 Resp: 165766

Ion	Ratio	Lower	Upper
152	100		
115	58.6	28.8	86.5
150	156.4	0.0	348.4

