

Data Path : Z:\voasrv\HPCHEM1\MSVOA_Y\Data\VY040522\
 Data File : VY008211.D
 Acq On : 05 Apr 2022 15:50
 Operator : SY/MD
 Sample : N2237-06
 Misc : 3.97g/5.0mL/MSVOA_Y/SOIL
 ALS Vial : 16 Sample Multiplier: 1

Instrument :
 MSVOA_Y
 ClientSampleId :
 A01015

Integration Parameters: RTEINT.P

Integrator: RTE
 Smoothing : ON Filtering: 5
 Sampling : 1 Min Area: 3 % of largest Peak
 Start Thrs: 0.2 Max Peaks: 100
 Stop Thrs : 0 Peak Location: TOP

If leading or trailing edge < 100 prefer < Baseline drop else tangent >
 Peak separation: 5

Method : Z:\voasrv\HPCHEM1\MSVOA_Y\methods\82Y032522S.M
 Title : SW846 8260

Signal : TIC: VY008211.D\data.ms

peak #	R.T. min	first scan	max scan	last scan	PK TY	peak height	corr. area	corr. % max.	% of total
1	4.716	464	475	487	rBV2	13937	42707	3.72%	1.057%
2	7.716	957	967	973	rBV2	92085	222869	19.39%	5.515%
3	7.789	973	979	994	rVB	152761	348124	30.28%	8.615%
4	8.143	1027	1037	1049	rBV	86213	189212	16.46%	4.682%
5	8.691	1117	1127	1138	rBV	240569	469799	40.87%	11.626%
6	10.179	1363	1371	1389	rBV	384506	662788	57.66%	16.401%
7	11.489	1578	1586	1597	rBV	334590	538385	46.84%	13.323%
8	12.489	1742	1750	1758	rBV2	662137	1149503	100.00%	28.446%
9	13.428	1895	1904	1910	rBV	247119	376157	32.72%	9.308%
10	13.965	1985	1992	1999	rBV	26953	41499	3.61%	1.027%

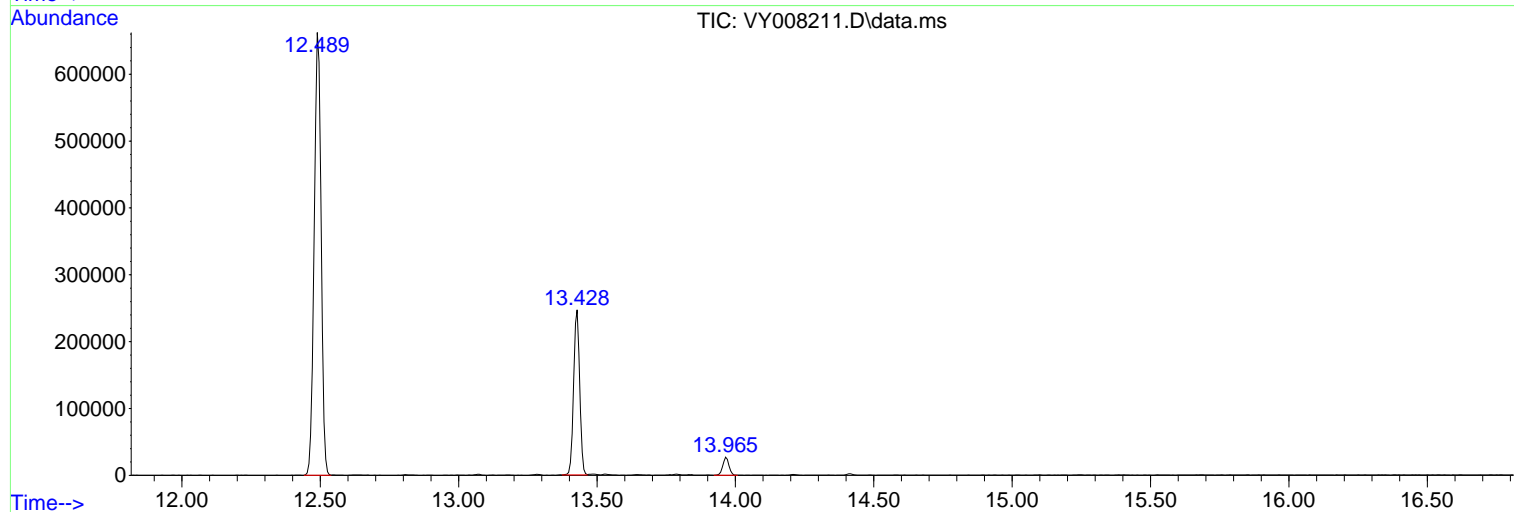
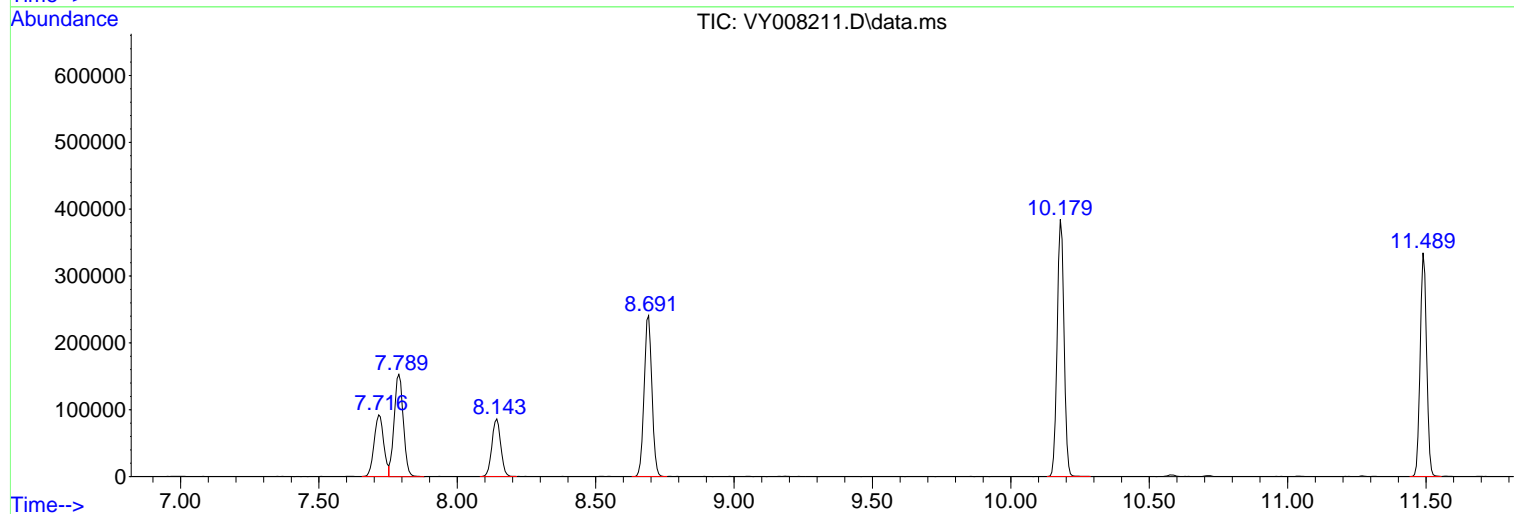
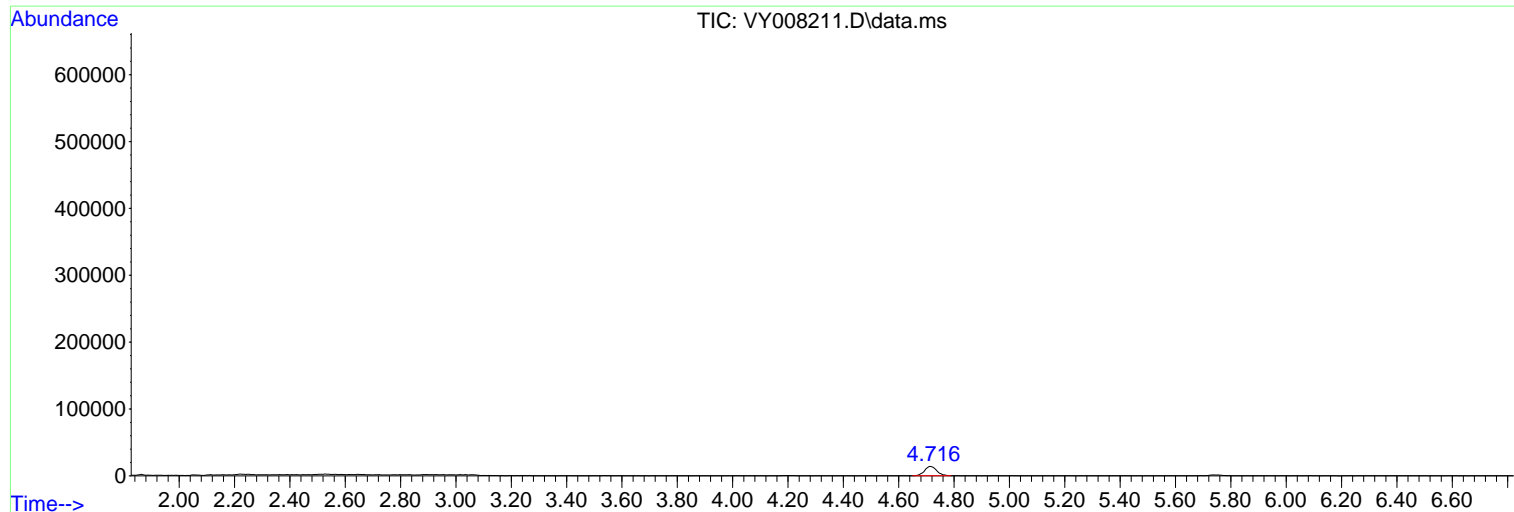
Sum of corrected areas: 4041043

Data Path : Z:\voasrv\HPCHEM1\MSVOA_Y\Data\VY040522\
Data File : VY008211.D
Acq On : 05 Apr 2022 15:50
Operator : SY/MD
Sample : N2237-06
Misc : 3.97g/5.0mL/MSVOA_Y/SOIL
ALS Vial : 16 Sample Multiplier: 1

Instrument :
MSVOA_Y
ClientSampleId :
A01015

Quant Method : Z:\voasrv\HPCHEM1\MSVOA_Y\methods\82Y032522S.M
Quant Title : SW846 8260

TIC Library : C:\Database\NIST20.L
TIC Integration Parameters: LSCINT.P



Data Path : Z:\voasrv\HPCHEM1\MSVOA_Y\Data\VY040522\
 Data File : VY008211.D
 Acq On : 05 Apr 2022 15:50
 Operator : SY/MD
 Sample : N2237-06
 Misc : 3.97g/5.0mL/MSVOA_Y/SOIL
 ALS Vial : 16 Sample Multiplier: 1

Instrument :
 MSVOA_Y
 ClientSampleId :
 A01015

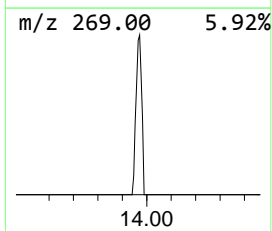
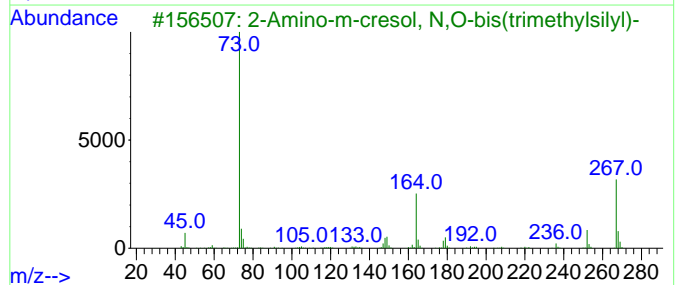
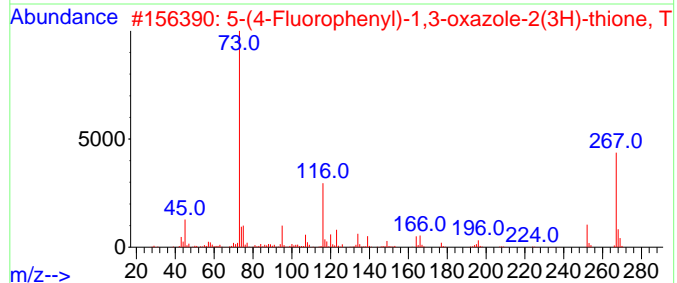
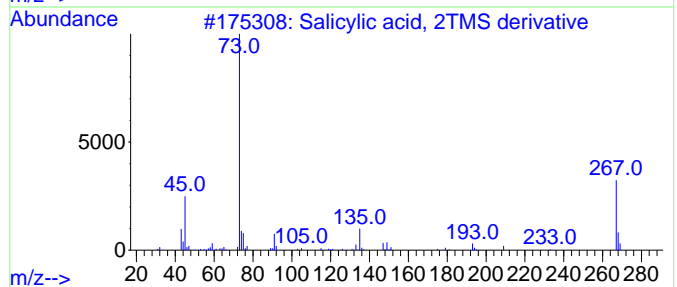
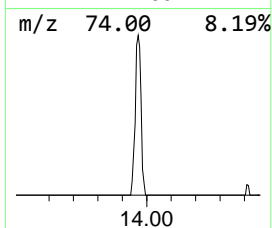
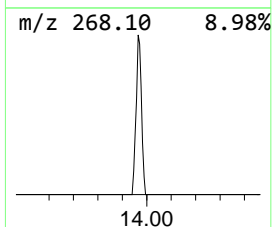
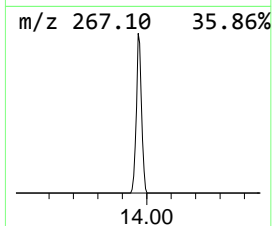
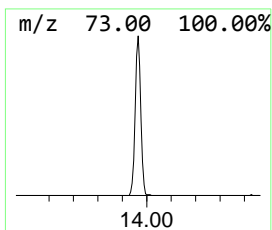
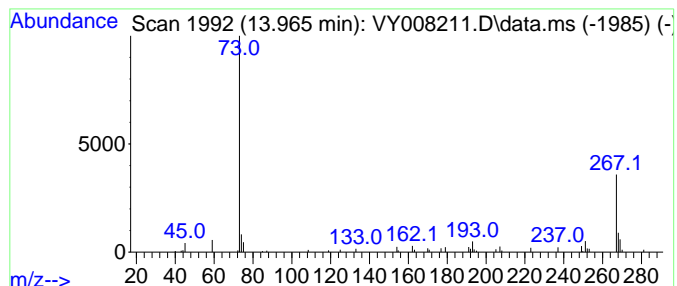
Quant Method : Z:\voasrv\HPCHEM1\MSVOA_Y\methods\82Y032522S.M
 Quant Title : SW846 8260

TIC Library : C:\Database\NIST20.L
 TIC Integration Parameters: LSCINT.P

 Peak Number 2 Salicylic acid, 2TMS deriva... Concentration Rank 2

R.T.	EstConc	Area	Relative to ISTD	R.T.
13.965	5.52 ug/l	41499	1,4-Dichlorobenzene-d4	13.428

Hit#	of	5	Tentative ID	MW	MolForm	CAS#	Qual
1			Salicylic acid, 2TMS derivative	282	C13H22O3Si2	003789-85-3	59
2			5-(4-Fluorophenyl)-1,3-oxazole-2...	267	C12H14FNOSi	1000497-07-6	59
3			2-Amino-m-cresol, N,O-bis(trimet...	267	C13H25NOSi2	1000449-77-1	59
4			4-(2-Fluorophenyl)-2,3-dihydro-1...	267	C12H14FNOSi	1000504-37-6	45
5			Benzeneethanamine, N-[(pentaflu...	475	C21H26F5NO2Si2	055429-85-1	45



Data Path : Z:\voasrv\HPCHEM1\MSVOA_Y\Data\VY040522\
Data File : VY008211.D
Acq On : 05 Apr 2022 15:50
Operator : SY/MD
Sample : N2237-06
Misc : 3.97g/5.0mL/MSVOA_Y/SOIL
ALS Vial : 16 Sample Multiplier: 1

Instrument :
MSVOA_Y
ClientSampleId :
A01015

Quant Method : Z:\voasrv\HPCHEM1\MSVOA_Y\methods\82Y032522S.M
Quant Title : SW846 8260

TIC Library : C:\Database\NIST0.L
TIC Integration Parameters: LSCINT.P

TIC Top Hit name	RT	EstConc	Units	Response	--Internal Standard--			
					#	RT	Resp	Conc
Salicylic acid,...	13.965	5.5	ug/l	41499	4	13.428	376157	50.0