

Data Path : Z:\voasrv\HPCHEM1\MSVOA\_Y\Data\VY040524\  
 Data File : VY017872.D  
 Acq On : 05 Apr 2024 15:41  
 Operator : SY/MD  
 Sample : P1995-01  
 Misc : 4.56g/5.0mL/MSVOA\_Y/SOIL/A  
 ALS Vial : 14 Sample Multiplier: 1

Instrument :  
 MSVOA\_Y  
 ClientSampleId :  
 280648

Quant Time: Apr 06 04:49:00 2024  
 Quant Method : Z:\voasrv\HPCHEM1\MSVOA\_Y\methods\82Y032924S.M  
 Quant Title : SW846 8260  
 QLast Update : Sat Mar 30 05:58:13 2024  
 Response via : Initial Calibration

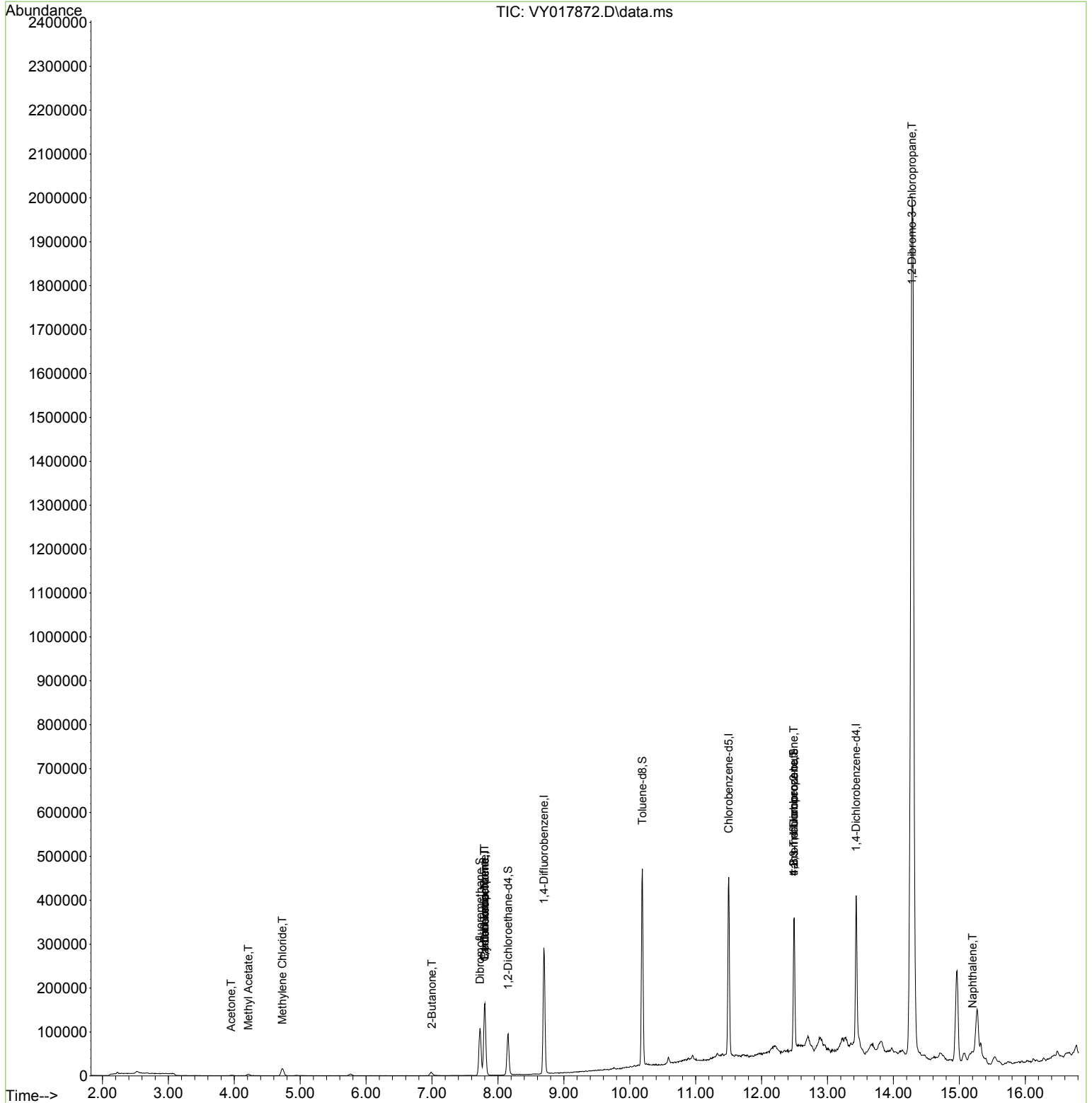
Compound	R.T.	QIon	Response	Conc	Units	Dev(Min)
-----						
Internal Standards						
1) Pentafluorobenzene	7.801	168	130026	50.000	ug/l	0.00
34) 1,4-Difluorobenzene	8.697	114	247143	50.000	ug/l	0.00
63) Chlorobenzene-d5	11.502	117	218262	50.000	ug/l	0.00
72) 1,4-Dichlorobenzene-d4	13.434	152	84793	50.000	ug/l	0.00
System Monitoring Compounds						
33) 1,2-Dichloroethane-d4	8.155	65	71151	63.236	ug/l	0.01
Spiked Amount	50.000	Range	50 - 163	Recovery	=	126.480%
35) Dibromofluoromethane	7.728	113	74963	52.491	ug/l	0.01
Spiked Amount	50.000	Range	54 - 147	Recovery	=	104.980%
50) Toluene-d8	10.191	98	298336	55.925	ug/l	0.00
Spiked Amount	50.000	Range	58 - 134	Recovery	=	111.840%
62) 4-Bromofluorobenzene	12.489	95	83075	51.185	ug/l	0.00
Spiked Amount	50.000	Range	30 - 143	Recovery	=	102.360%
Target Compounds						
					Qvalue	
11) Tert butyl alcohol	4.960	59	827	Below Cal	#	88
16) Acetone	3.954	43	2073	8.913	ug/l #	83
18) Methyl Acetate	4.216	43	1255	2.436	ug/l #	46
20) Methylene Chloride	4.729	84	12800	6.681	ug/l #	94
25) 2-Butanone	6.996	43	398	1.201	ug/l #	86
31) Cyclohexane	7.801	56	2916	1.471	ug/l #	40
36) 1,1-Dichloropropene	7.795	75	10038	4.817	ug/l #	47
38) Carbon Tetrachloride	7.795	117	12370	5.719	ug/l #	18
48) Methyl methacrylate	9.325	41	102	Below Cal	#	59
51) 4-Methyl-2-Pentanone	10.081	43	515	Below Cal	#	73
58) 2-Chloroethyl Vinyl ether	9.825	63	24	Below Cal	#	1
69) o-Xylene	12.197	106	235	Below Cal		81
70) Styrene	12.057	104	482	Below Cal	#	47
76) 1,2,3-Trichloropropane	12.489	75	45358	58.702	ug/l #	100
81) trans-1,4-Dichloro-2-b...	12.489	75	45358	112.620	ug/l #	16
92) 1,2-Dibromo-3-Chloropr...	14.282	75	33880	243.909	ug/l #	4
95) Naphthalene	15.202	128	13899	8.565	ug/l #	35
-----						

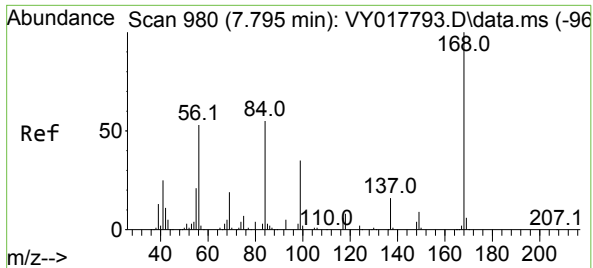
(#) = qualifier out of range (m) = manual integration (+) = signals summed

Data Path : Z:\voasrv\HPCHEM1\MSVOA\_Y\Data\VY040524\  
 Data File : VY017872.D  
 Acq On : 05 Apr 2024 15:41  
 Operator : SY/MD  
 Sample : P1995-01  
 Misc : 4.56g/5.0mL/MSVOA\_Y/SOIL/A  
 ALS Vial : 14 Sample Multiplier: 1

Instrument :  
 MSVOA\_Y  
 ClientSampleId :  
 280648

Quant Time: Apr 06 04:49:00 2024  
 Quant Method : Z:\voasrv\HPCHEM1\MSVOA\_Y\methods\82Y032924S.M  
 Quant Title : SW846 8260  
 QLast Update : Sat Mar 30 05:58:13 2024  
 Response via : Initial Calibration

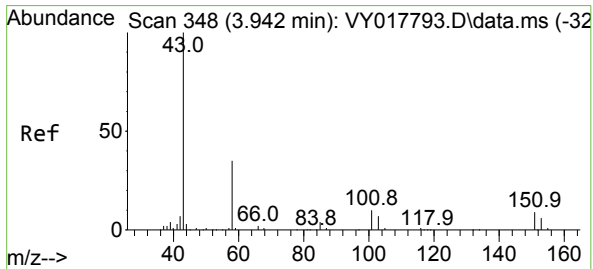
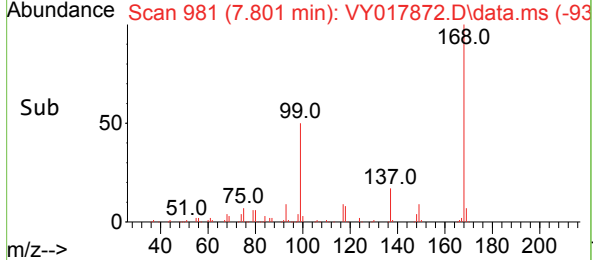
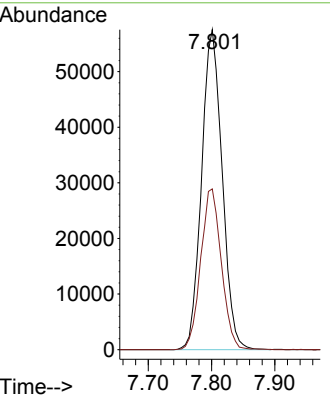
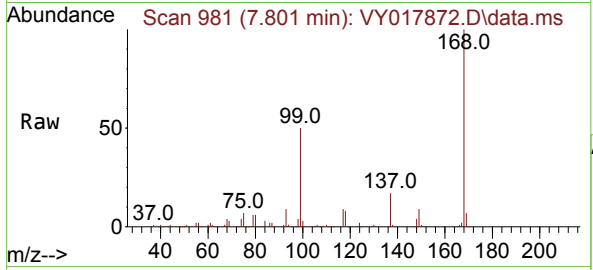




#1  
 Pentafluorobenzene  
 Concen: 50.000 ug/l  
 RT: 7.801 min Scan# 91  
 Delta R.T. 0.006 min  
 Lab File: VY017872.D  
 Acq: 05 Apr 2024 15:41

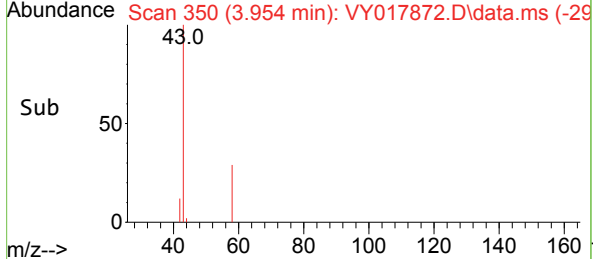
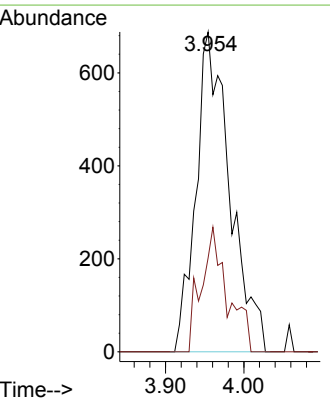
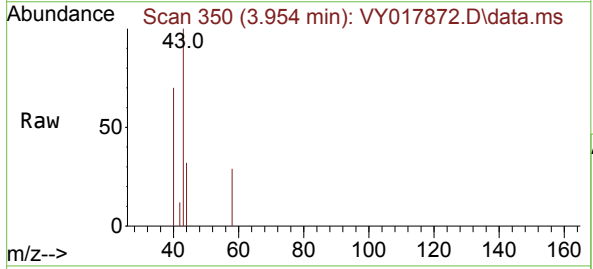
Instrument : MSVOA\_Y  
 ClientSampleId : 280648

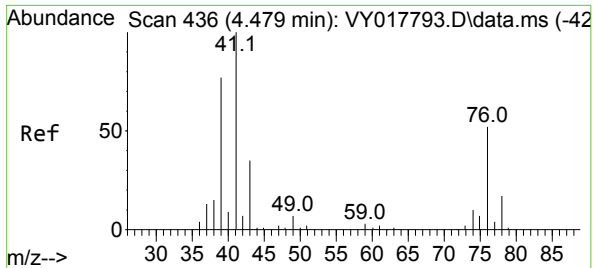
Tgt Ion:168 Resp: 130026  
 Ion Ratio Lower Upper  
 168 100  
 99 50.3 39.1 58.7



#16  
 Acetone  
 Concen: 8.913 ug/l  
 RT: 3.954 min Scan# 350  
 Delta R.T. 0.012 min  
 Lab File: VY017872.D  
 Acq: 05 Apr 2024 15:41

Tgt Ion: 43 Resp: 2073  
 Ion Ratio Lower Upper  
 43 100  
 58 29.4 31.7 47.5#

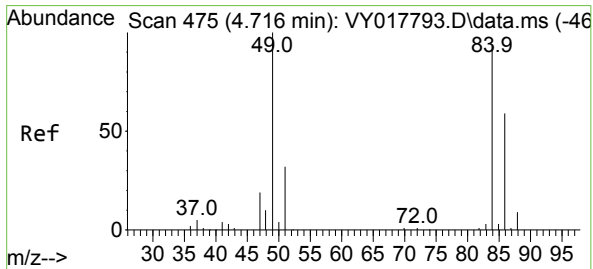
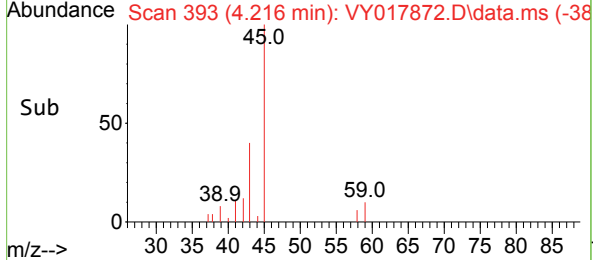
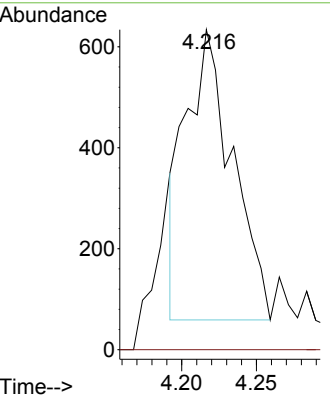
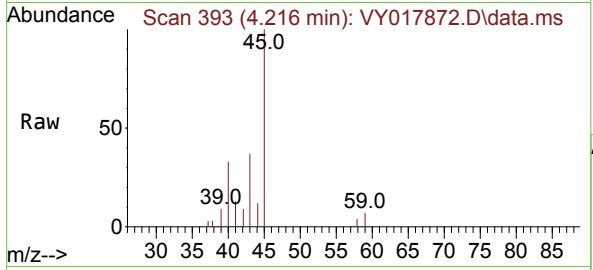




#18  
 Methyl Acetate  
 Concen: 2.436 ug/l  
 RT: 4.216 min Scan# 393  
 Delta R.T. -0.262 min  
 Lab File: VY017872.D  
 Acq: 05 Apr 2024 15:41

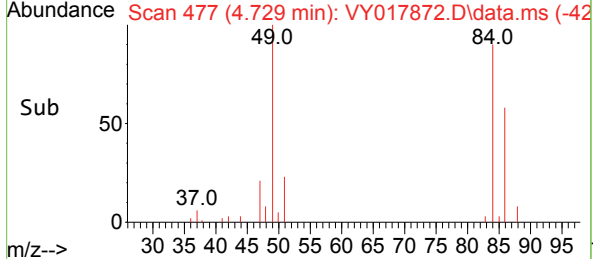
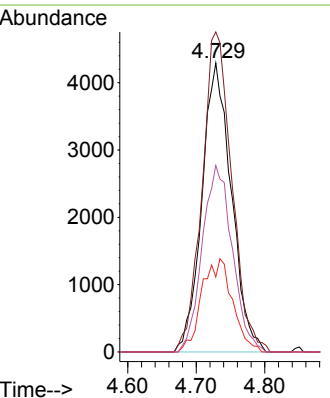
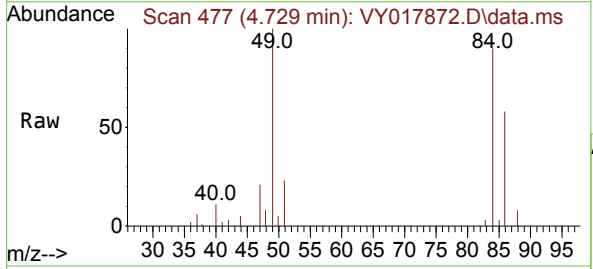
Instrument : MSVOA\_Y  
 ClientSampleId : 280648

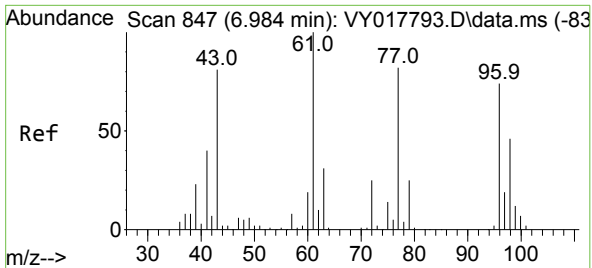
Tgt Ion: 43 Resp: 1255  
 Ion Ratio Lower Upper  
 43 100  
 74 0.0 23.3 34.9#



#20  
 Methylene Chloride  
 Concen: 6.681 ug/l  
 RT: 4.729 min Scan# 477  
 Delta R.T. 0.013 min  
 Lab File: VY017872.D  
 Acq: 05 Apr 2024 15:41

Tgt Ion: 84 Resp: 12800  
 Ion Ratio Lower Upper  
 84 100  
 49 110.7 84.4 126.6  
 51 25.9 26.0 39.0#  
 86 64.5 49.5 74.3

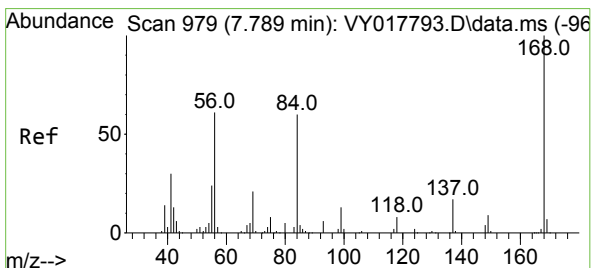
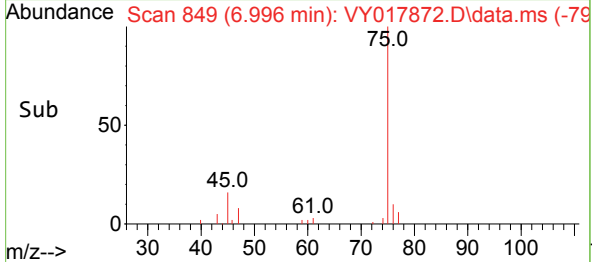
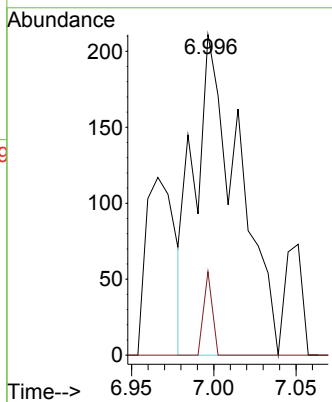
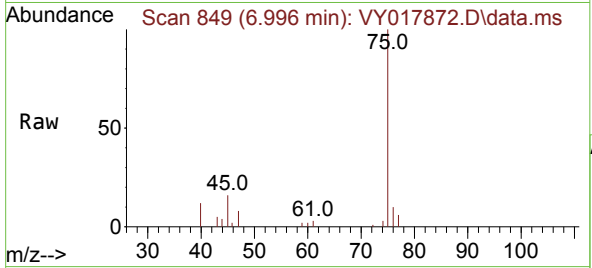




#25  
 2-Butanone  
 Concen: 1.201 ug/l  
 RT: 6.996 min Scan# 849  
 Delta R.T. 0.012 min  
 Lab File: VY017872.D  
 Acq: 05 Apr 2024 15:41

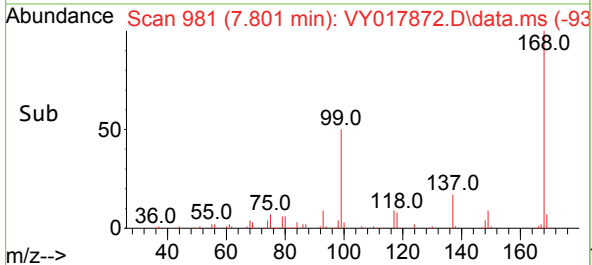
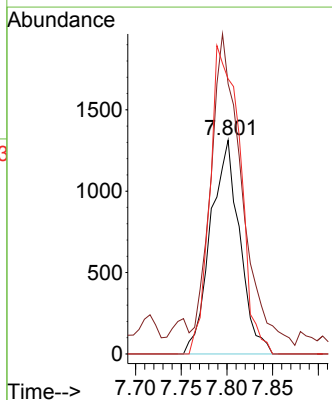
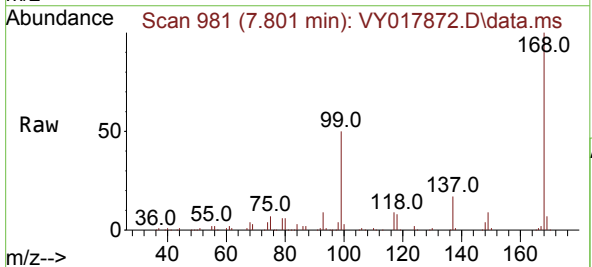
Instrument : MSVOA\_Y  
 ClientSampleId : 280648

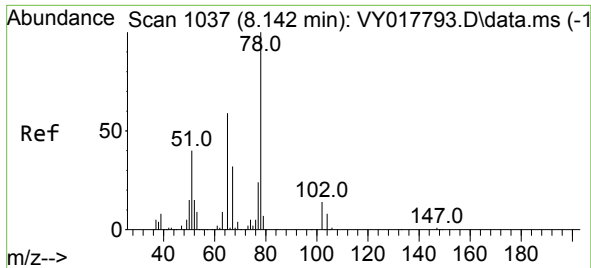
Tgt Ion: 43 Resp: 398  
 Ion Ratio Lower Upper  
 43 100  
 72 26.1 27.3 40.9#



#31  
 Cyclohexane  
 Concen: 1.471 ug/l  
 RT: 7.801 min Scan# 981  
 Delta R.T. 0.012 min  
 Lab File: VY017872.D  
 Acq: 05 Apr 2024 15:41

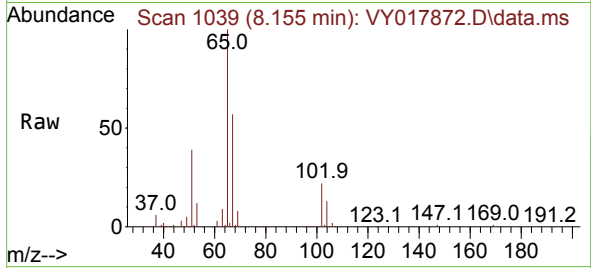
Tgt Ion: 56 Resp: 2916  
 Ion Ratio Lower Upper  
 56 100  
 69 115.8 28.7 43.1#  
 84 128.7 77.7 116.5#



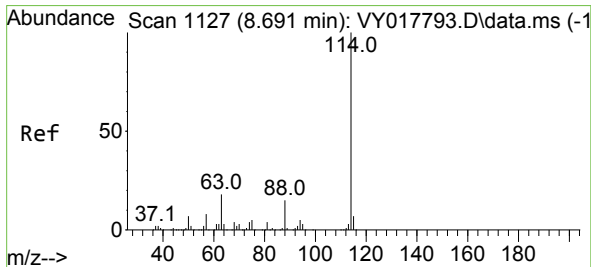
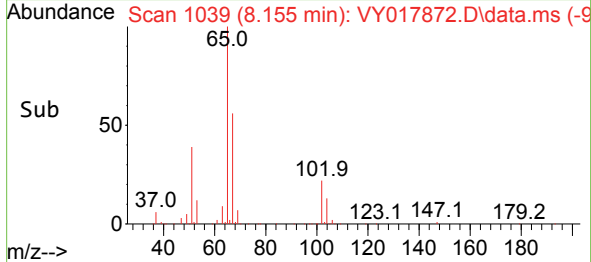
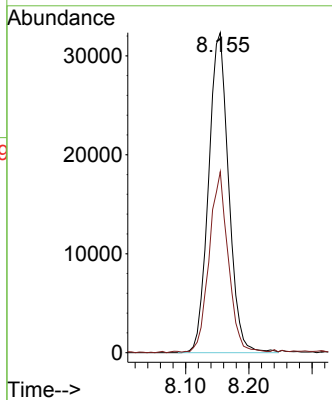


#33  
 1,2-Dichloroethane-d4  
 Concen: 63.236 ug/l  
 RT: 8.155 min Scan# 1039  
 Delta R.T. 0.012 min  
 Lab File: VY017872.D  
 Acq: 05 Apr 2024 15:41

Instrument : MSVOA\_Y  
 ClientSampleId : 280648

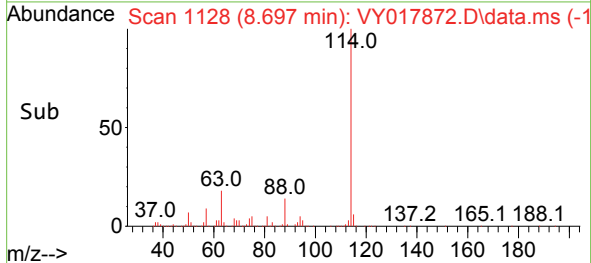
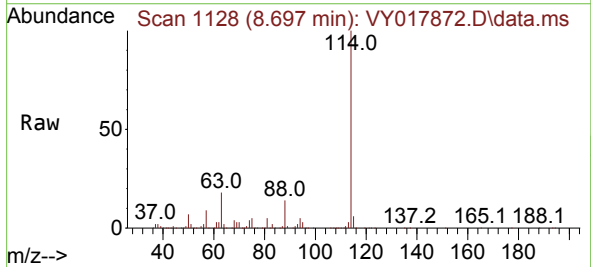
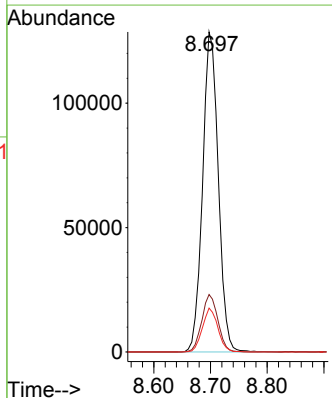


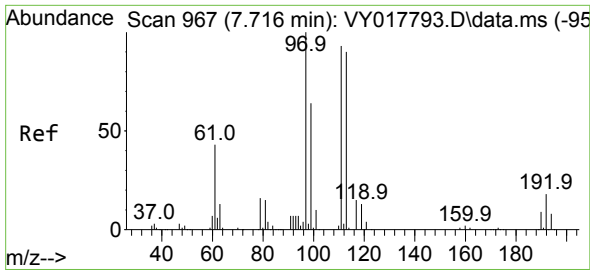
Tgt Ion: 65 Resp: 71151  
 Ion Ratio Lower Upper  
 65 100  
 67 53.2 0.0 109.6



#34  
 1,4-Difluorobenzene  
 Concen: 50.000 ug/l  
 RT: 8.697 min Scan# 1128  
 Delta R.T. 0.006 min  
 Lab File: VY017872.D  
 Acq: 05 Apr 2024 15:41

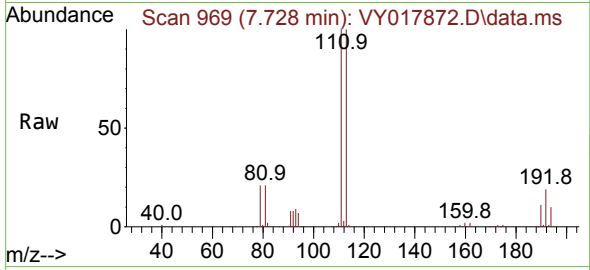
Tgt Ion: 114 Resp: 247143  
 Ion Ratio Lower Upper  
 114 100  
 63 18.0 0.0 35.0  
 88 13.7 0.0 27.2



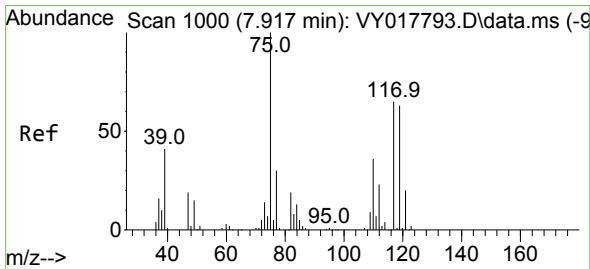
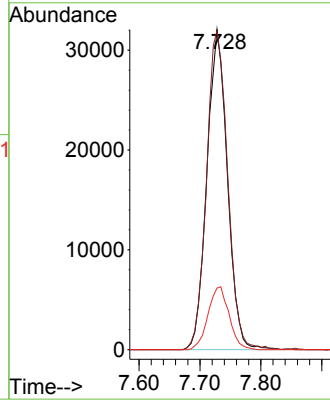
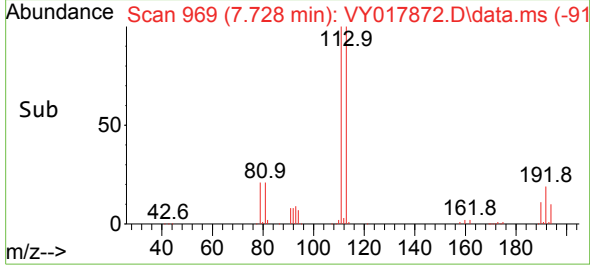


#35  
 Dibromofluoromethane  
 Concen: 52.491 ug/l  
 RT: 7.728 min Scan# 90  
 Delta R.T. 0.012 min  
 Lab File: VY017872.D  
 Acq: 05 Apr 2024 15:41

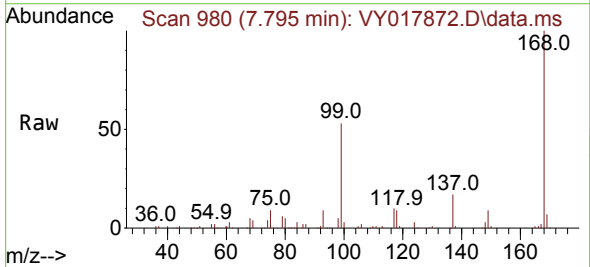
Instrument :  
 MSVOA\_Y  
 ClientSampleId :  
 280648



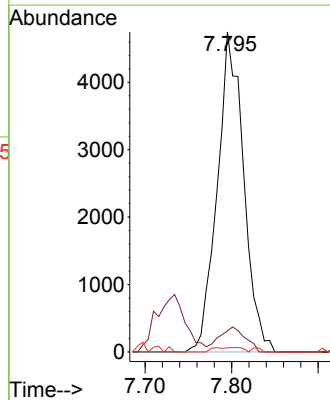
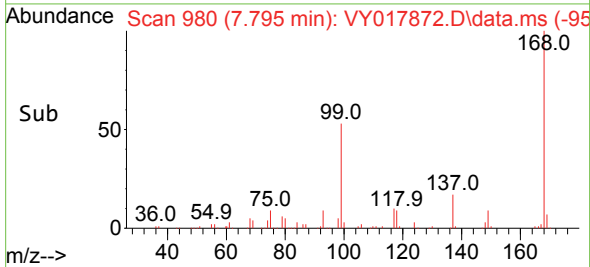
Tgt Ion:113 Resp: 74963  
 Ion Ratio Lower Upper  
 113 100  
 111 102.9 82.2 123.4  
 192 20.2 15.9 23.9

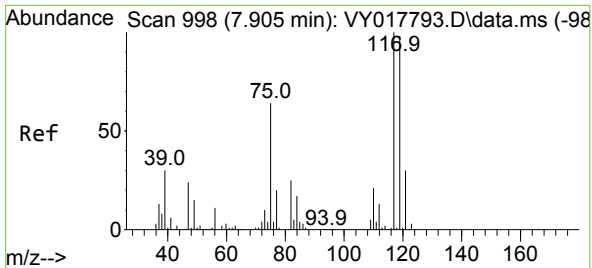


#36  
 1,1-Dichloropropene  
 Concen: 4.817 ug/l  
 RT: 7.795 min Scan# 980  
 Delta R.T. -0.122 min  
 Lab File: VY017872.D  
 Acq: 05 Apr 2024 15:41



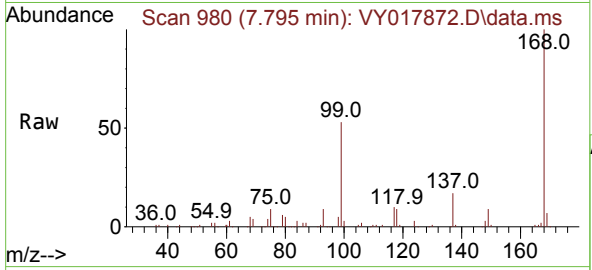
Tgt Ion: 75 Resp: 10038  
 Ion Ratio Lower Upper  
 75 100  
 110 7.7 19.0 57.0#  
 77 0.6 25.3 37.9#



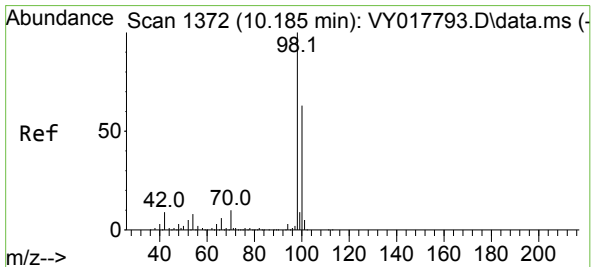
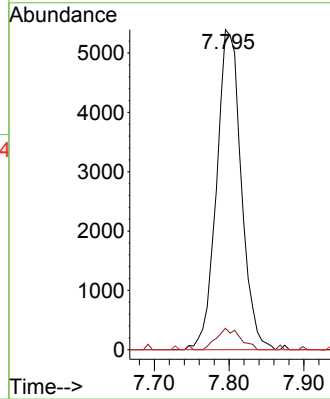
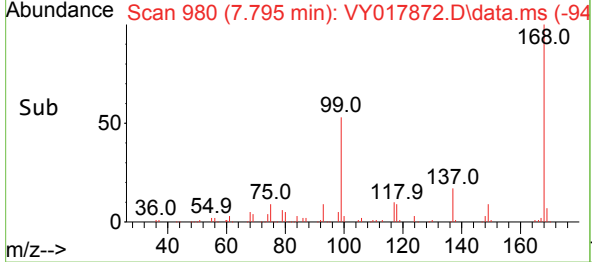


#38  
 Carbon Tetrachloride  
 Concen: 5.719 ug/l  
 RT: 7.795 min Scan# 94  
 Delta R.T. -0.110 min  
 Lab File: VY017872.D  
 Acq: 05 Apr 2024 15:41

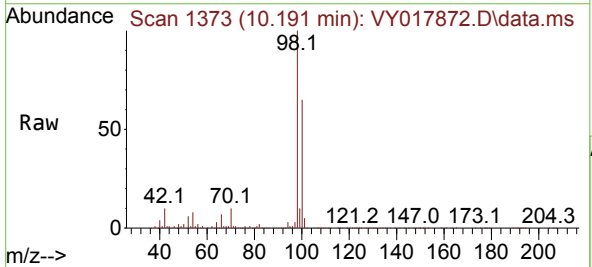
Instrument : MSVOA\_Y  
 ClientSampleId : 280648



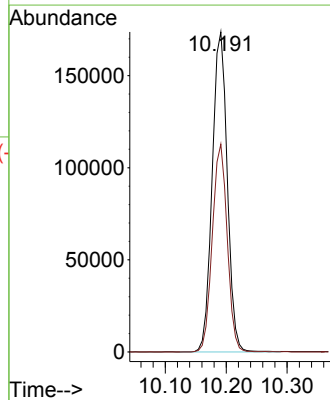
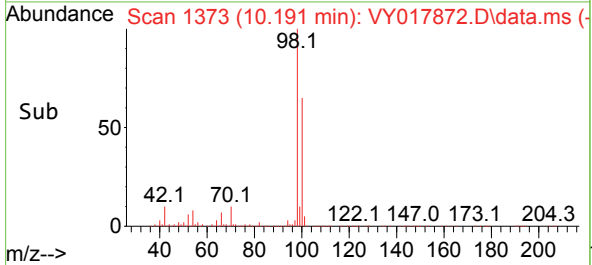
Tgt Ion: 117 Resp: 12370  
 Ion Ratio Lower Upper  
 117 100  
 119 6.7 75.8 113.6#  
 121 0.0 24.0 36.0#



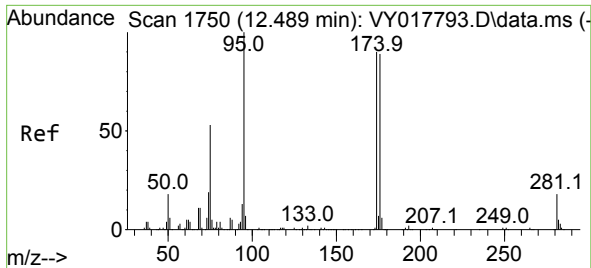
#50  
 Toluene-d8  
 Concen: 55.925 ug/l  
 RT: 10.191 min Scan# 1373  
 Delta R.T. 0.006 min  
 Lab File: VY017872.D  
 Acq: 05 Apr 2024 15:41



Tgt Ion: 98 Resp: 298336  
 Ion Ratio Lower Upper  
 98 100  
 100 64.1 52.0 78.0

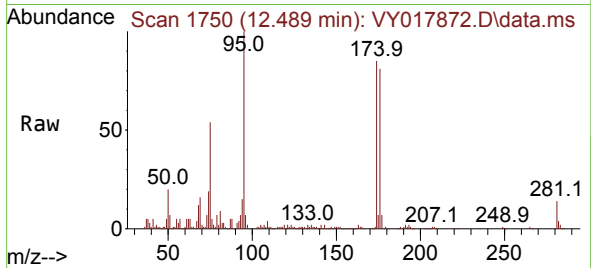




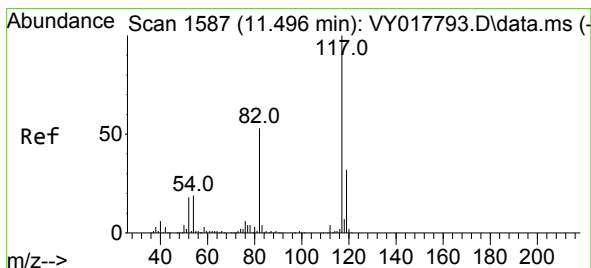
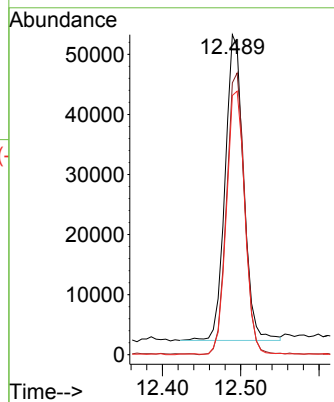
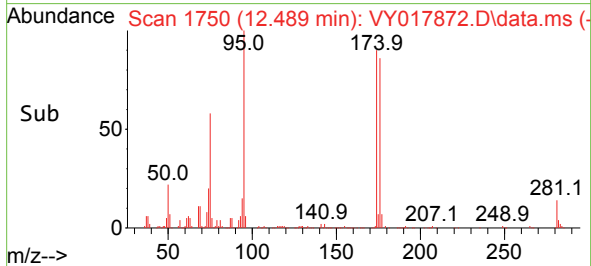


#62  
 4-Bromofluorobenzene  
 Concen: 51.185 ug/l  
 RT: 12.489 min Scan# 1750  
 Delta R.T. 0.000 min  
 Lab File: VY017872.D  
 Acq: 05 Apr 2024 15:41

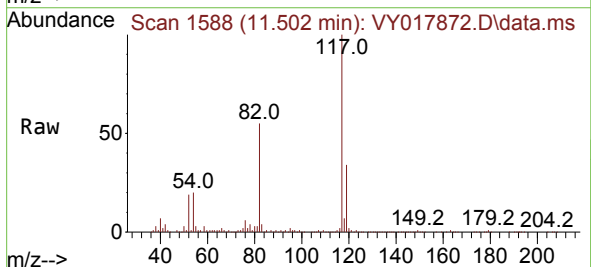
Instrument : MSVOA\_Y  
 ClientSampleId : 280648



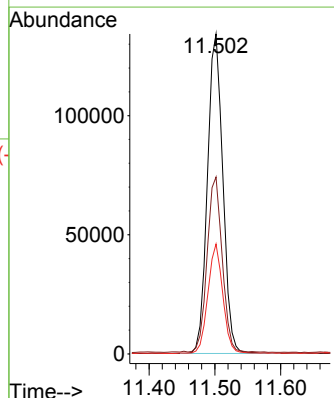
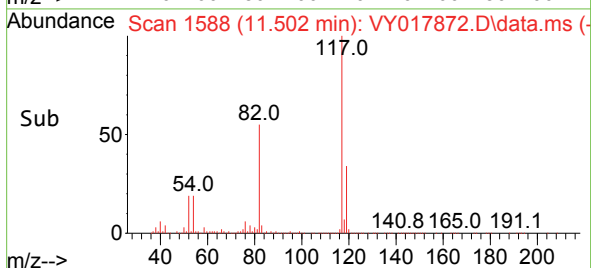
Tgt Ion: 95 Resp: 83075  
 Ion Ratio Lower Upper  
 95 100  
 174 91.5 0.0 175.6  
 176 86.2 0.0 171.4

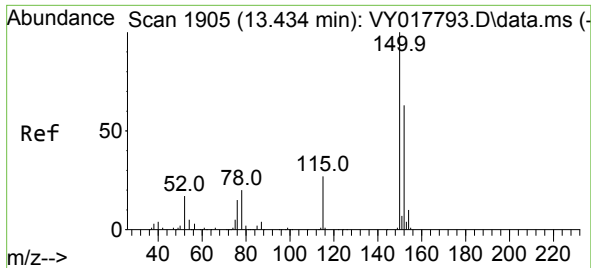


#63  
 Chlorobenzene-d5  
 Concen: 50.000 ug/l  
 RT: 11.502 min Scan# 1588  
 Delta R.T. 0.006 min  
 Lab File: VY017872.D  
 Acq: 05 Apr 2024 15:41



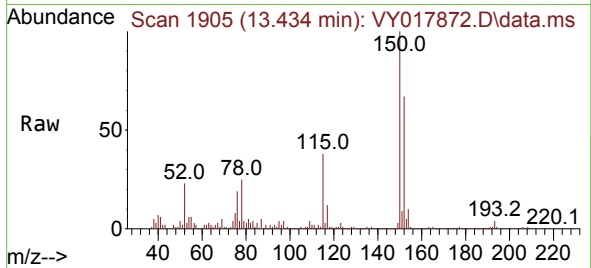
Tgt Ion: 117 Resp: 218262  
 Ion Ratio Lower Upper  
 117 100  
 82 54.8 42.4 63.6  
 119 34.1 25.9 38.9



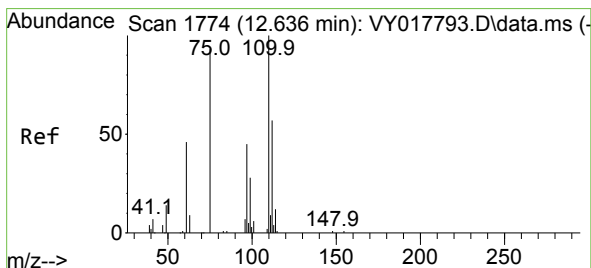
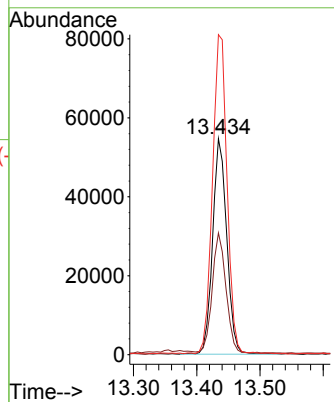
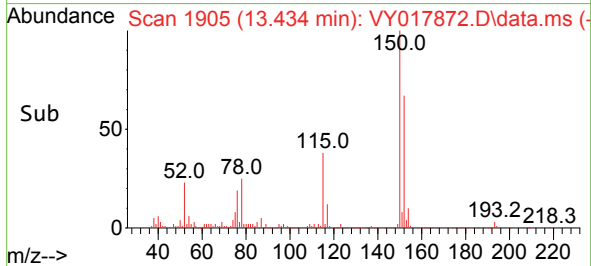


#72  
 1,4-Dichlorobenzene-d4  
 Concen: 50.000 ug/l  
 RT: 13.434 min Scan# 1750  
 Delta R.T. 0.000 min  
 Lab File: VY017872.D  
 Acq: 05 Apr 2024 15:41

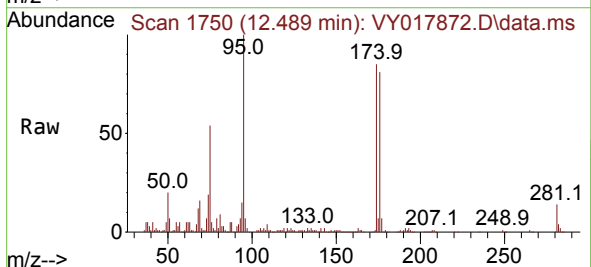
Instrument : MSVOA\_Y  
 ClientSampleId : 280648



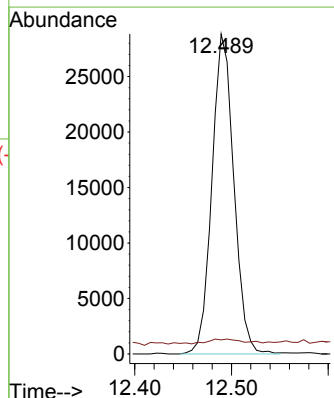
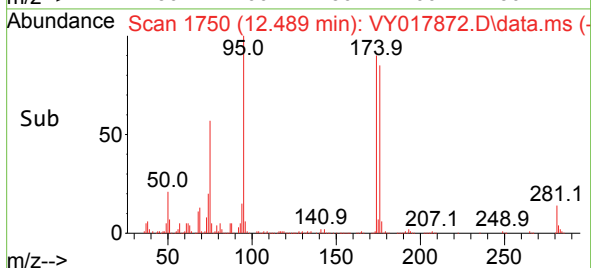
Tgt Ion:152 Resp: 84793  
 Ion Ratio Lower Upper  
 152 100  
 115 54.2 28.2 84.7  
 150 152.0 0.0 345.6

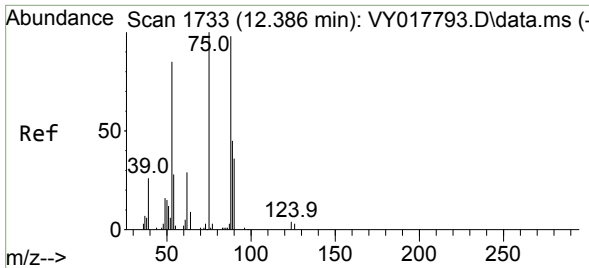


#76  
 1,2,3-Trichloropropane  
 Concen: 58.702 ug/l  
 RT: 12.489 min Scan# 1750  
 Delta R.T. -0.146 min  
 Lab File: VY017872.D  
 Acq: 05 Apr 2024 15:41



Tgt Ion: 75 Resp: 45358  
 Ion Ratio Lower Upper  
 75 100  
 77 2.5 0.0 0.0#



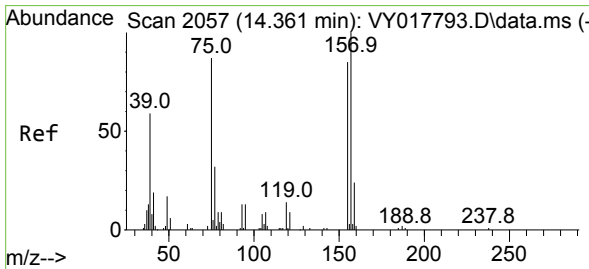
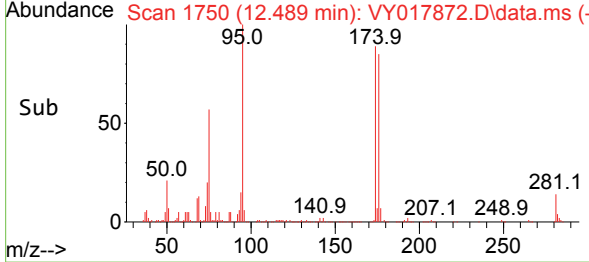
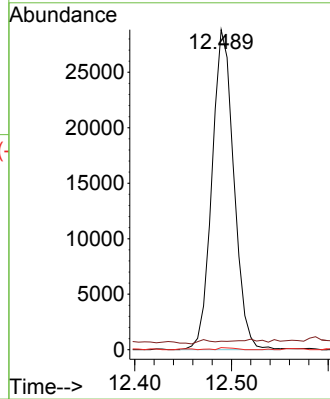
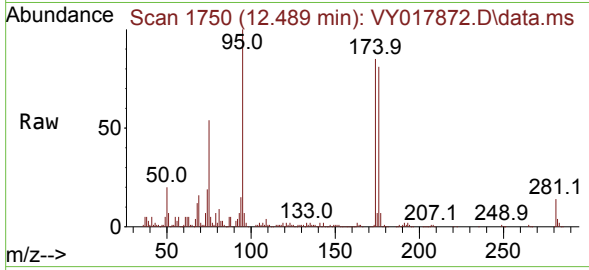


#81  
 trans-1,4-Dichloro-2-butene  
 Concen: 112.620 ug/l  
 RT: 12.489 min Scan# 1  
 Delta R.T. 0.103 min  
 Lab File: VY017872.D  
 Acq: 05 Apr 2024 15:41

Instrument :  
 MSVOA\_Y  
 ClientSampleId :  
 280648

Tgt Ion: 75 Resp: 45358

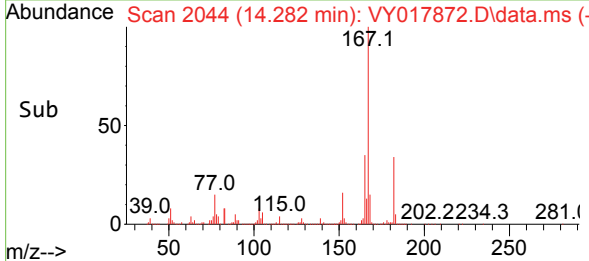
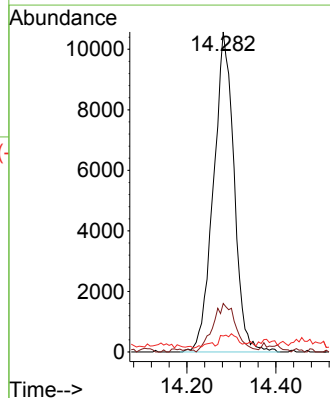
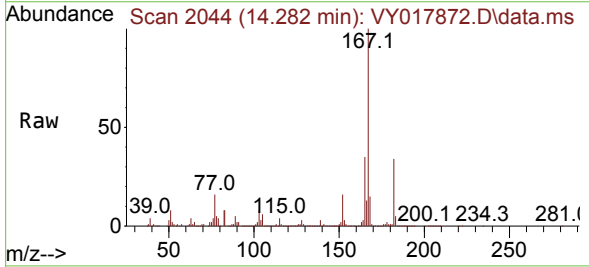
Ion	Ratio	Lower	Upper
75	100		
53	0.0	66.8	100.2#
89	0.5	35.8	53.6#

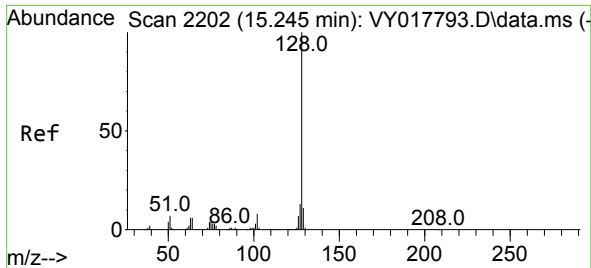


#92  
 1,2-Dibromo-3-Chloropropane  
 Concen: 243.909 ug/l  
 RT: 14.282 min Scan# 2044  
 Delta R.T. -0.079 min  
 Lab File: VY017872.D  
 Acq: 05 Apr 2024 15:41

Tgt Ion: 75 Resp: 33880

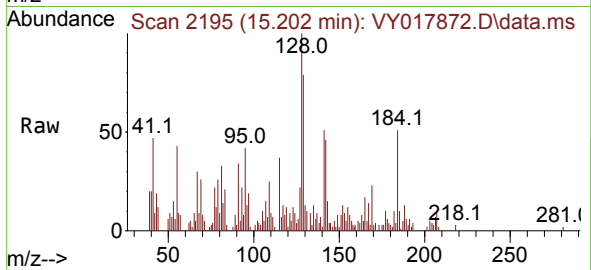
Ion	Ratio	Lower	Upper
75	100		
155	17.1	48.6	145.8#
157	2.9	62.7	188.2#





#95  
 Naphthalene  
 Concen: 8.565 ug/l  
 RT: 15.202 min Scan# 21  
 Delta R.T. -0.043 min  
 Lab File: VY017872.D  
 Acq: 05 Apr 2024 15:41

Instrument :  
 MSVOA\_Y  
 ClientSampleId :  
 280648



Tgt Ion:128 Resp: 13899

Ion	Ratio	Lower	Upper
128	100		
127	13.0	10.6	16.0
129	65.4	8.6	13.0#

