

Data Path : Z:\voasrv\HPCHEM1\MSVOA\_Y\Data\VY040722\  
 Data File : VY008245.D  
 Acq On : 07 Apr 2022 14:37  
 Operator : KP/MD  
 Sample : N2277-01RE  
 Misc : 5.10g/5.0mL/MSVOA\_Y/SOIL  
 ALS Vial : 8 Sample Multiplier: 1

Instrument :  
 MSVOA\_Y  
 ClientSampleId :  
 PF-1

Quant Time: Apr 08 02:35:12 2022  
 Quant Method : Z:\voasrv\HPCHEM1\MSVOA\_Y\methods\82Y032522S.M  
 Quant Title : SW846 8260  
 QLast Update : Sat Mar 26 03:24:51 2022  
 Response via : Initial Calibration

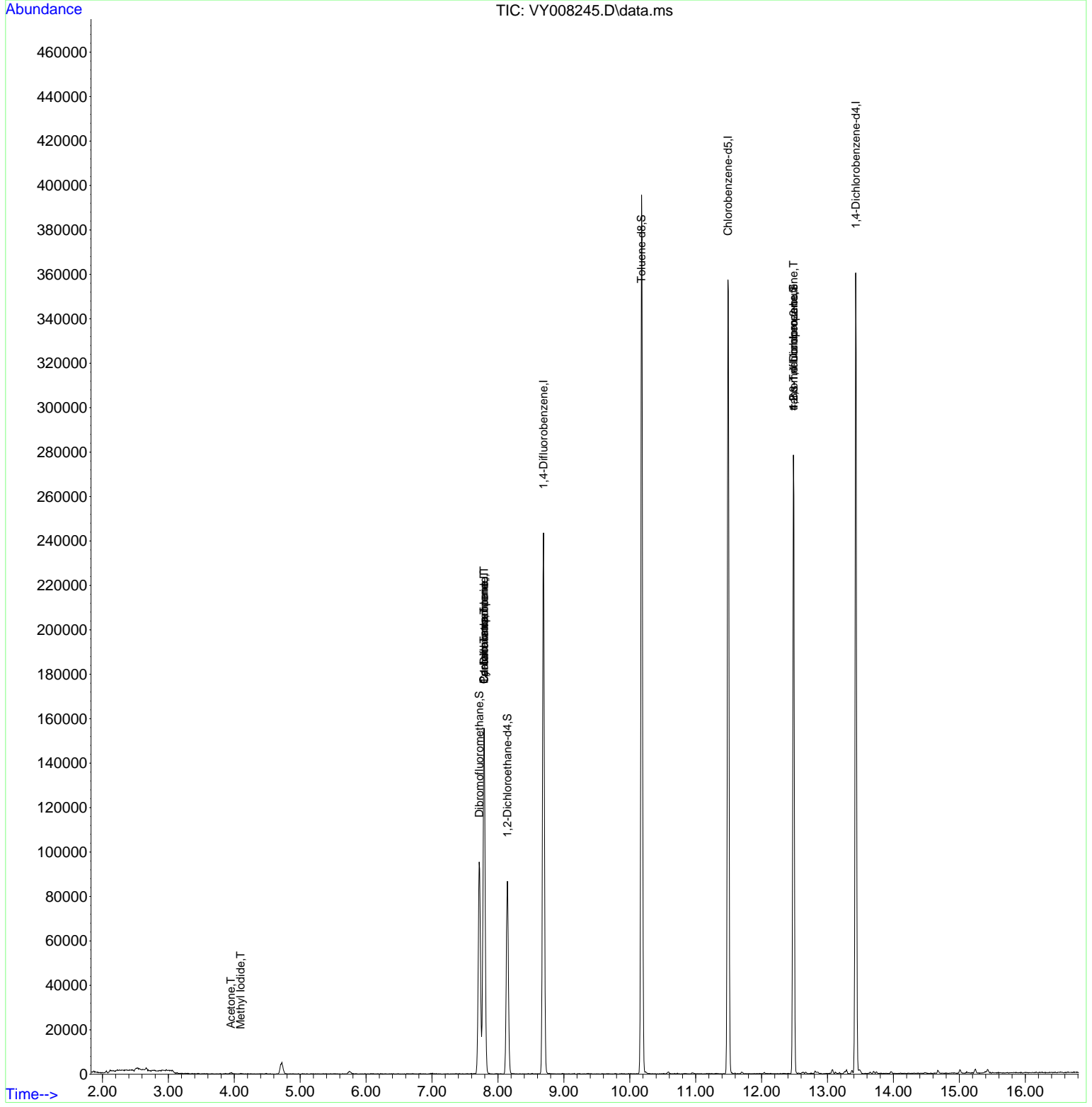
Compound	R.T.	QIon	Response	Conc	Units	Dev(Min)
Internal Standards						
1) Pentafluorobenzene	7.789	168	122604	50.000	ug/l	0.00
34) 1,4-Difluorobenzene	8.691	114	216905	50.000	ug/l	0.00
63) Chlorobenzene-d5	11.490	117	208232	50.000	ug/l	0.00
72) 1,4-Dichlorobenzene-d4	13.428	152	90123	50.000	ug/l	0.00
System Monitoring Compounds						
33) 1,2-Dichloroethane-d4	8.143	65	67159	54.597	ug/l	0.00
Spiked Amount	50.000	Range	50 - 163	Recovery	=	109.200%
35) Dibromofluoromethane	7.716	113	68620	50.458	ug/l	0.00
Spiked Amount	50.000	Range	54 - 147	Recovery	=	100.920%
50) Toluene-d8	10.179	98	268008	52.309	ug/l	0.00
Spiked Amount	50.000	Range	49 - 140	Recovery	=	104.620%
62) 4-Bromofluorobenzene	12.483	95	87868	48.610	ug/l	0.00
Spiked Amount	50.000	Range	25 - 144	Recovery	=	97.220%
Target Compounds						
					Qvalue	
10) Methyl Iodide	4.095	142	278	1.861	ug/l #	53
16) Acetone	3.948	43	835	2.970	ug/l #	89
18) Methyl Acetate	4.491	43	215	Below Cal	#	56
20) Methylene Chloride	4.722	84	4320	Below Cal	#	71
31) Cyclohexane	7.789	56	2468	1.073	ug/l #	1
36) 1,1-Dichloropropene	7.789	75	8975	4.201	ug/l #	52
38) Carbon Tetrachloride	7.789	117	12130	5.211	ug/l #	16
76) 1,2,3-Trichloropropane	12.483	75	45115	41.066	ug/l #	100
81) trans-1,4-Dichloro-2-b...	12.483	75	45115	91.624	ug/l #	7

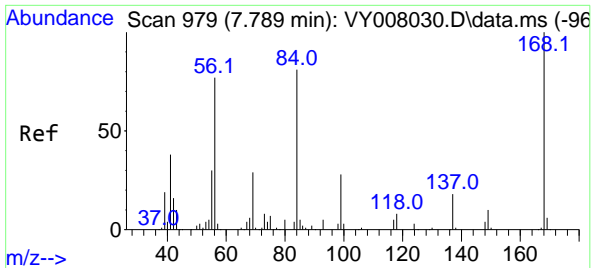
(#) = qualifier out of range (m) = manual integration (+) = signals summed

Data Path : Z:\voasrv\HPCHEM1\MSVOA\_Y\Data\VY040722\  
 Data File : VY008245.D  
 Acq On : 07 Apr 2022 14:37  
 Operator : KP/MD  
 Sample : N2277-01RE  
 Misc : 5.10g/5.0mL/MSVOA\_Y/SOIL  
 ALS Vial : 8 Sample Multiplier: 1

**Instrument :**  
 MSVOA\_Y  
**ClientSampleId :**  
 PF-1

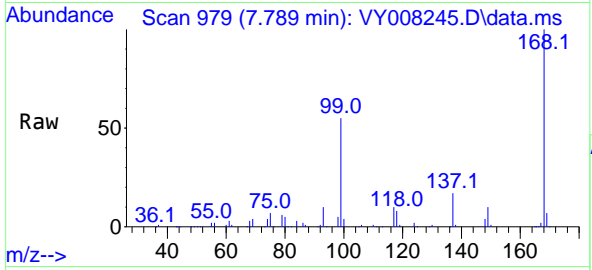
Quant Time: Apr 08 02:35:12 2022  
 Quant Method : Z:\voasrv\HPCHEM1\MSVOA\_Y\methods\82Y032522S.M  
 Quant Title : SW846 8260  
 QLast Update : Sat Mar 26 03:24:51 2022  
 Response via : Initial Calibration



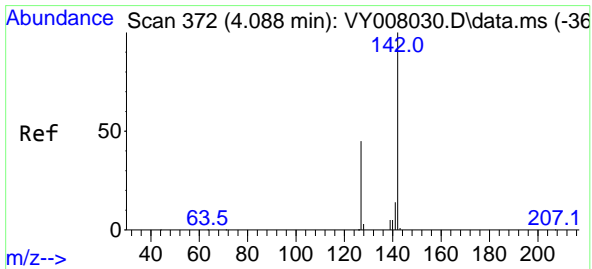
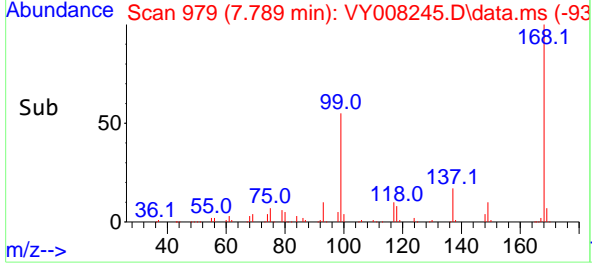
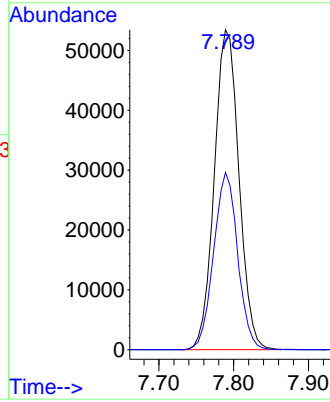


#1  
 Pentafluorobenzene  
 Concen: 50.000 ug/l  
 RT: 7.789 min Scan# 91  
 Delta R.T. 0.000 min  
 Lab File: VY008245.D  
 Acq: 07 Apr 2022 14:37

Instrument :  
 MSVOA\_Y  
 ClientSampleId :  
 PF-1

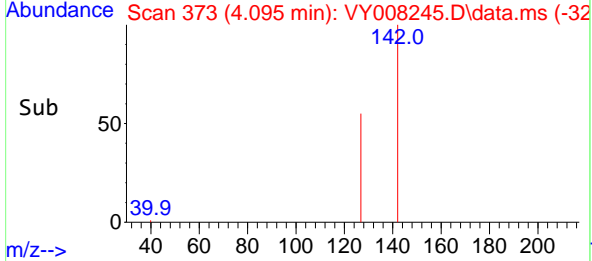
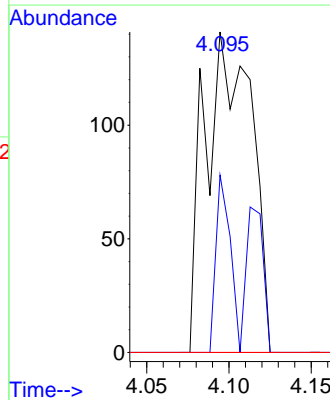
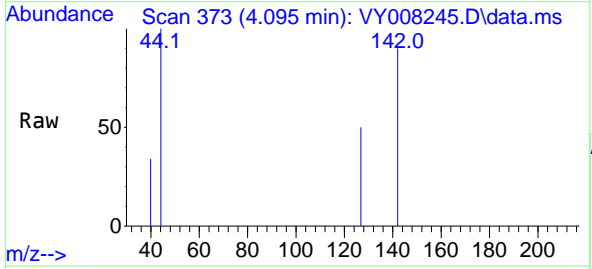


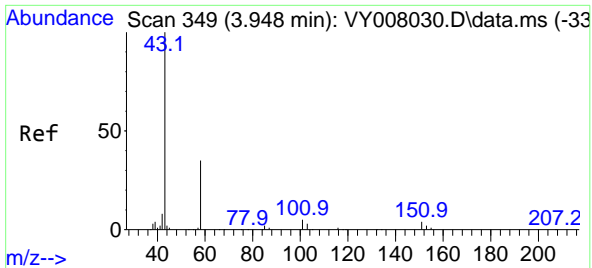
Tgt Ion:168 Resp: 122604  
 Ion Ratio Lower Upper  
 168 100  
 99 55.4 46.9 70.3



#10  
 Methyl Iodide  
 Concen: 1.861 ug/l  
 RT: 4.095 min Scan# 373  
 Delta R.T. 0.007 min  
 Lab File: VY008245.D  
 Acq: 07 Apr 2022 14:37

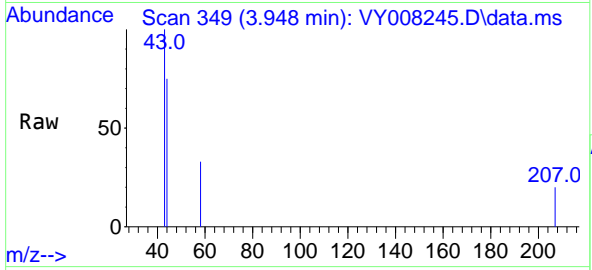
Tgt Ion:142 Resp: 278  
 Ion Ratio Lower Upper  
 142 100  
 127 16.9 41.5 62.3#  
 141 0.0 11.9 17.9#



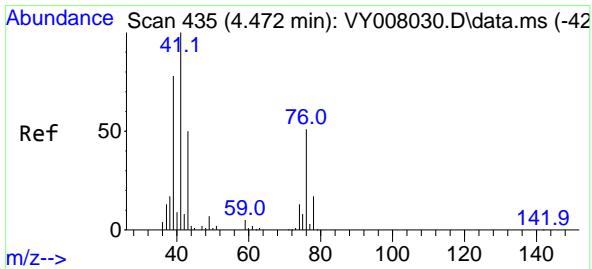
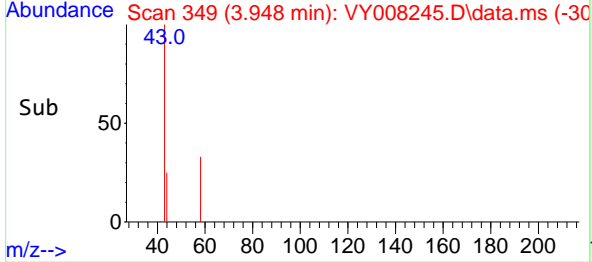
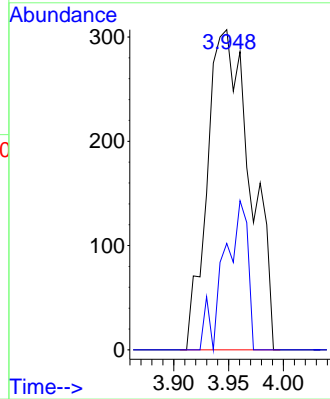


#16  
 Acetone  
 Concen: 2.970 ug/l  
 RT: 3.948 min Scan# 349  
 Delta R.T. 0.000 min  
 Lab File: VY008245.D  
 Acq: 07 Apr 2022 14:37

Instrument :  
 MSVOA\_Y  
 ClientSampleId :  
 PF-1

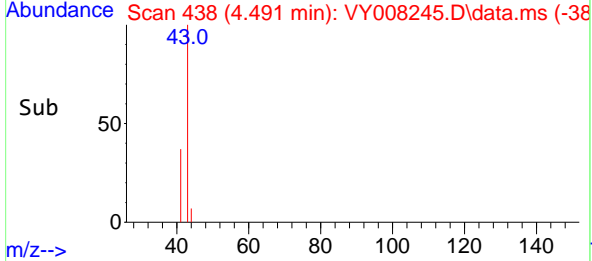
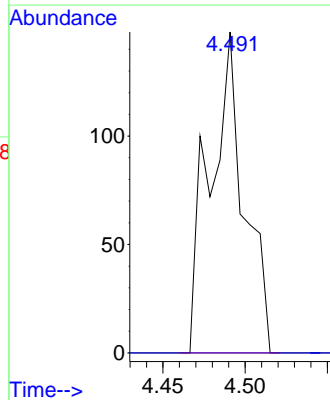
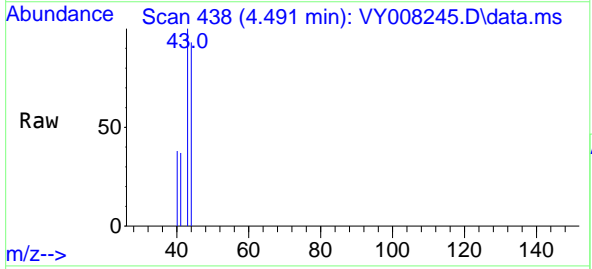


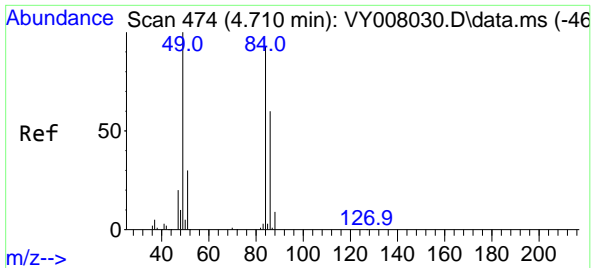
Tgt Ion: 43 Resp: 835  
 Ion Ratio Lower Upper  
 43 100  
 58 33.2 22.0 33.0#



#18  
 Methyl Acetate  
 Concen: Below Cal  
 RT: 4.491 min Scan# 438  
 Delta R.T. 0.019 min  
 Lab File: VY008245.D  
 Acq: 07 Apr 2022 14:37

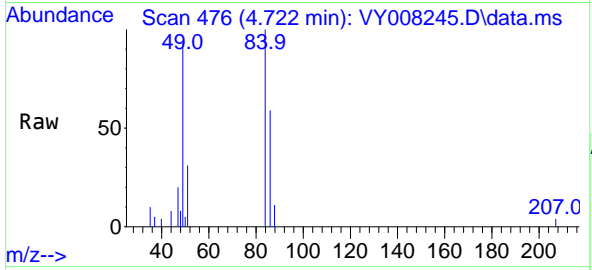
Tgt Ion: 43 Resp: 215  
 Ion Ratio Lower Upper  
 43 100  
 74 0.0 16.6 24.8#



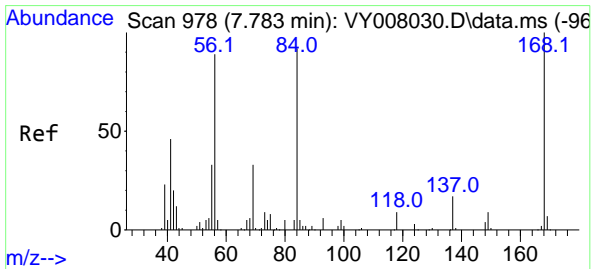
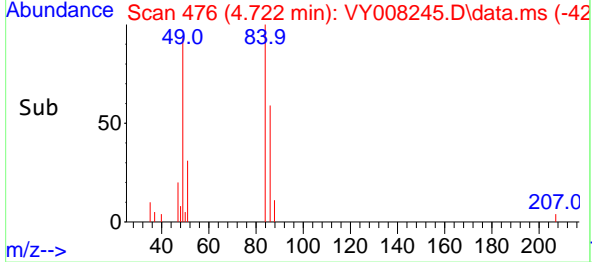
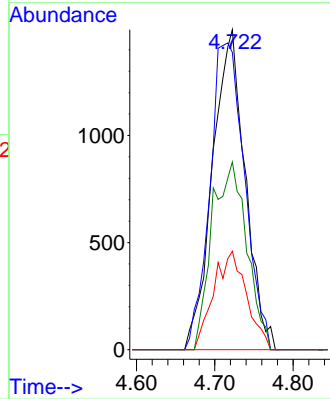


#20  
Methylene Chloride  
Concen: Below Cal  
RT: 4.722 min Scan# 41  
Delta R.T. 0.012 min  
Lab File: VY008245.D  
Acq: 07 Apr 2022 14:37

Instrument :  
MSVOA\_Y  
ClientSampleId :  
PF-1

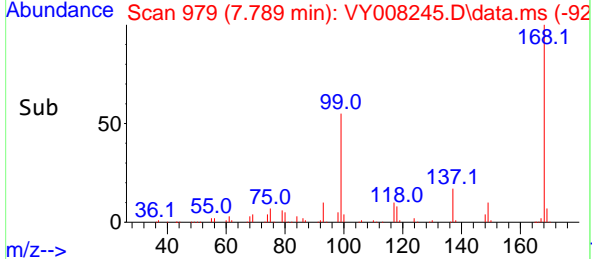
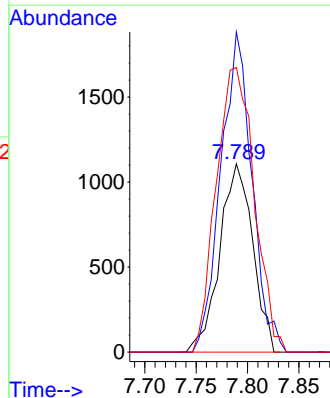
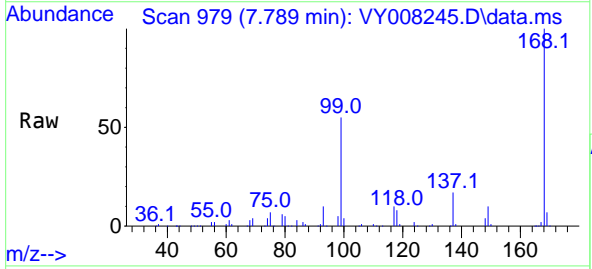


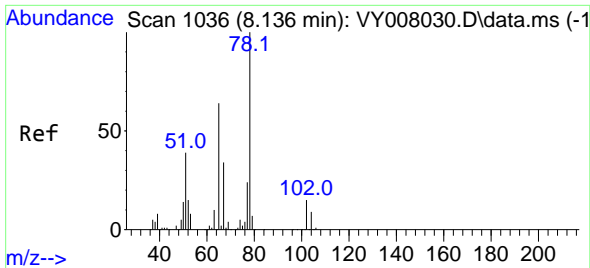
Tgt Ion: 84 Resp: 4320  
Ion Ratio Lower Upper  
84 100  
49 92.9 114.4 171.6#  
51 30.8 35.3 52.9#  
86 58.6 53.7 80.5



#31  
Cyclohexane  
Concen: 1.073 ug/l  
RT: 7.789 min Scan# 979  
Delta R.T. 0.006 min  
Lab File: VY008245.D  
Acq: 07 Apr 2022 14:37

Tgt Ion: 56 Resp: 2468  
Ion Ratio Lower Upper  
56 100  
69 170.1 26.7 40.1#  
84 151.2 67.2 100.8#

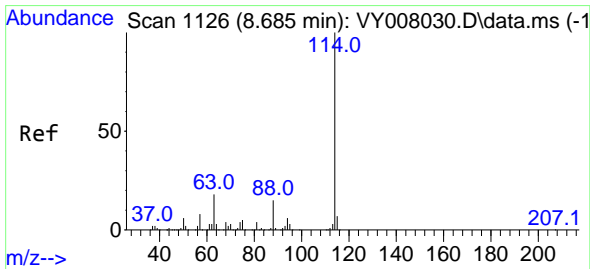
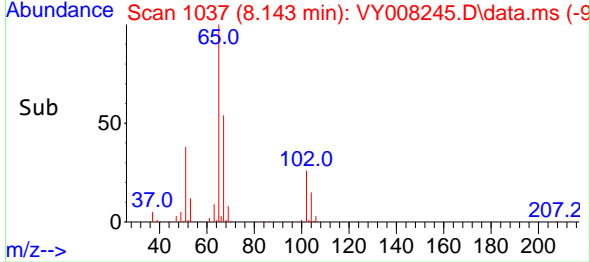
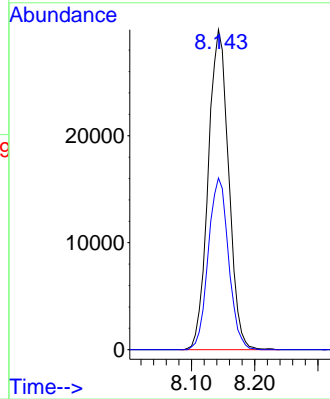
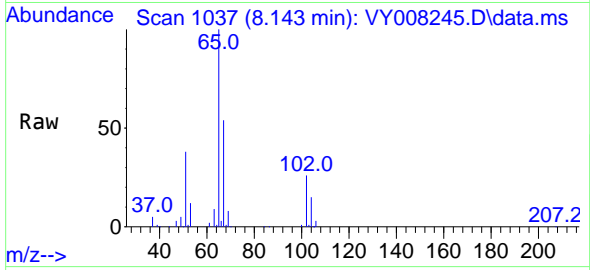




#33  
 1,2-Dichloroethane-d4  
 Concen: 54.597 ug/l  
 RT: 8.143 min Scan# 1037  
 Delta R.T. 0.007 min  
 Lab File: VY008245.D  
 Acq: 07 Apr 2022 14:37

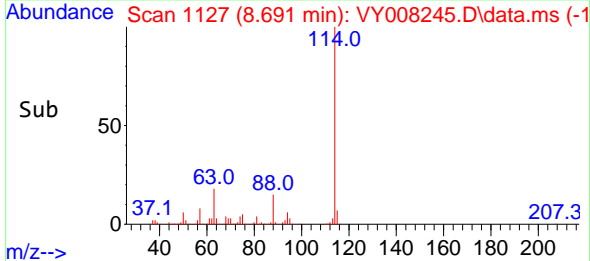
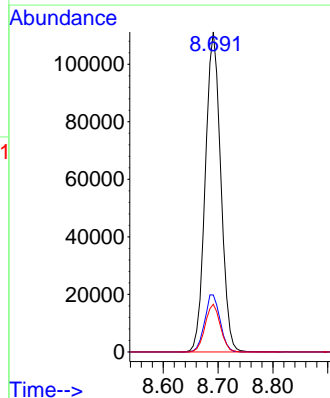
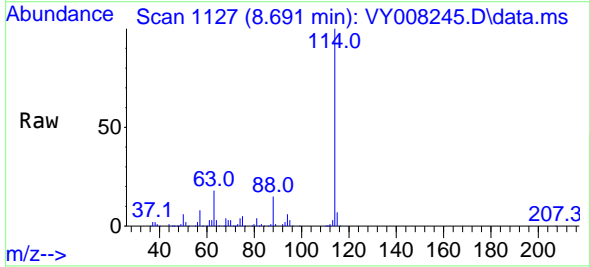
Instrument : MSVOA\_Y  
 ClientSampleId : PF-1

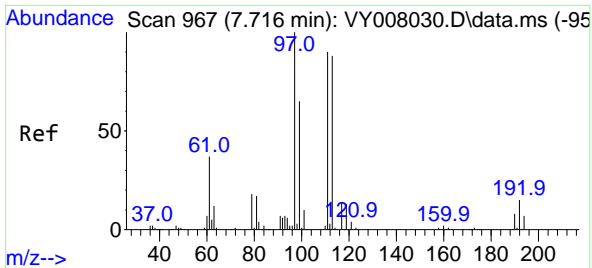
Tgt Ion: 65 Resp: 67159  
 Ion Ratio Lower Upper  
 65 100  
 67 53.2 0.0 99.4



#34  
 1,4-Difluorobenzene  
 Concen: 50.000 ug/l  
 RT: 8.691 min Scan# 1127  
 Delta R.T. 0.006 min  
 Lab File: VY008245.D  
 Acq: 07 Apr 2022 14:37

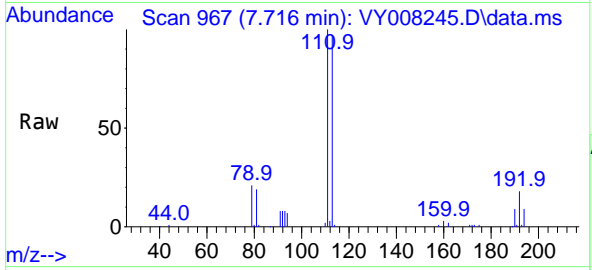
Tgt Ion: 114 Resp: 216905  
 Ion Ratio Lower Upper  
 114 100  
 63 17.8 0.0 43.2  
 88 14.9 0.0 31.8



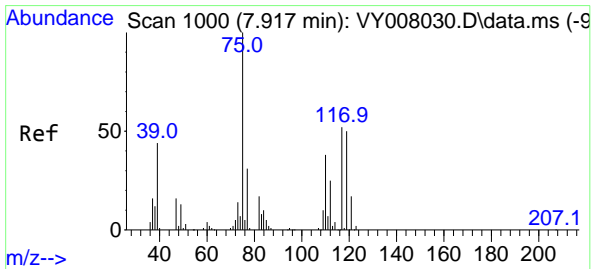
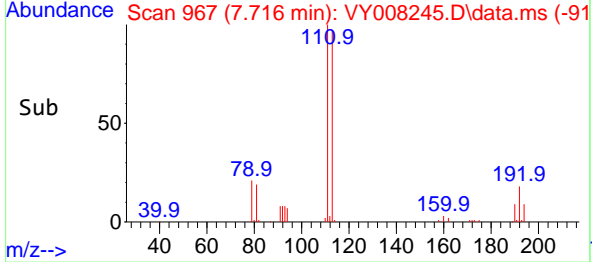
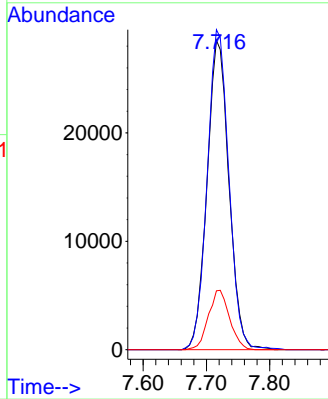


#35  
 Dibromofluoromethane  
 Concen: 50.458 ug/l  
 RT: 7.716 min Scan# 910  
 Delta R.T. -0.000 min  
 Lab File: VY008245.D  
 Acq: 07 Apr 2022 14:37

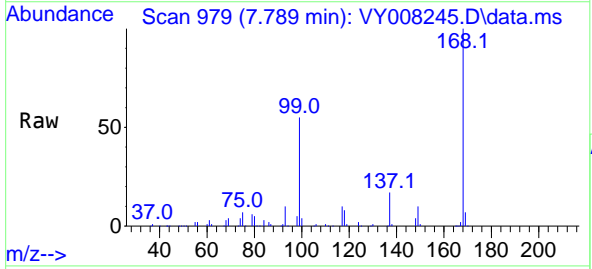
Instrument : MSVOA\_Y  
 ClientSampleId : PF-1



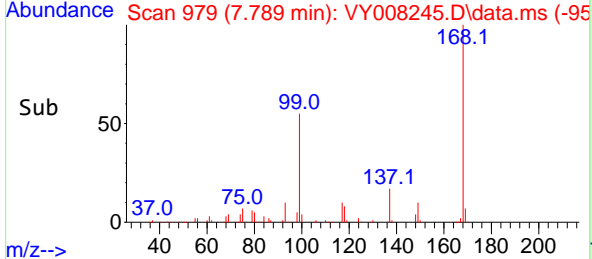
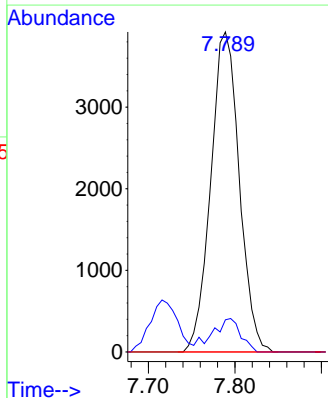
Tgt Ion:113 Resp: 68620  
 Ion Ratio Lower Upper  
 113 100  
 111 102.3 82.6 124.0  
 192 18.6 17.6 26.4

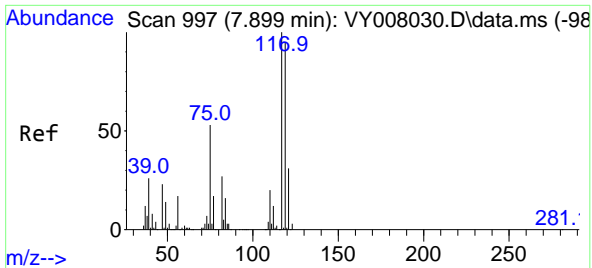


#36  
 1,1-Dichloropropene  
 Concen: 4.201 ug/l  
 RT: 7.789 min Scan# 979  
 Delta R.T. -0.128 min  
 Lab File: VY008245.D  
 Acq: 07 Apr 2022 14:37



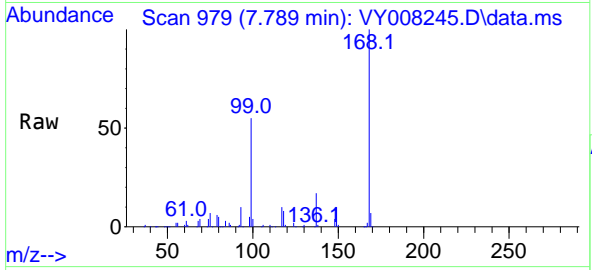
Tgt Ion: 75 Resp: 8975  
 Ion Ratio Lower Upper  
 75 100  
 110 10.3 17.1 51.2#  
 77 0.0 24.4 36.6#





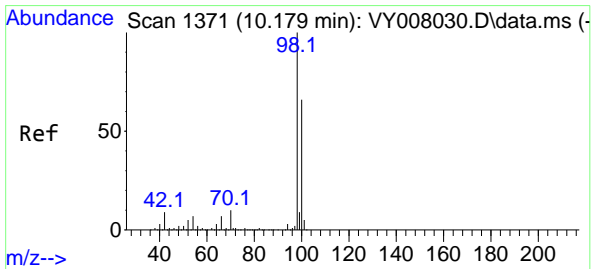
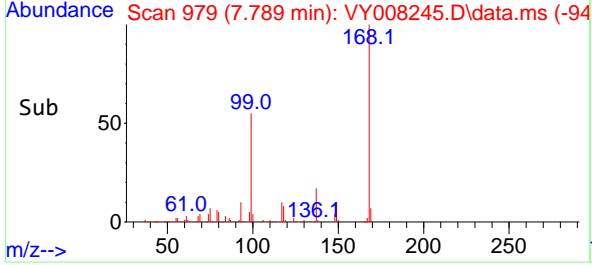
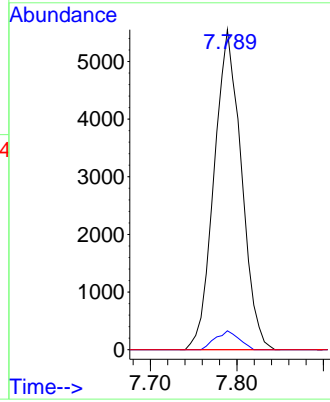
#38  
 Carbon Tetrachloride  
 Concen: 5.211 ug/l  
 RT: 7.789 min Scan# 91  
 Delta R.T. -0.110 min  
 Lab File: VY008245.D  
 Acq: 07 Apr 2022 14:37

Instrument : MSVOA\_Y  
 ClientSampleId : PF-1



Tgt Ion:117 Resp: 12130

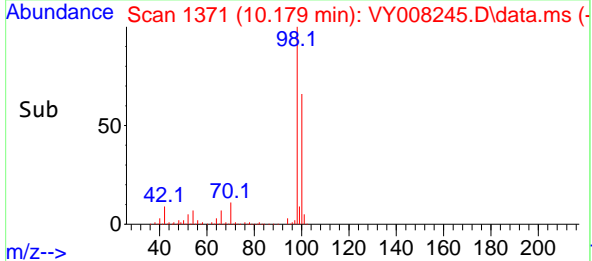
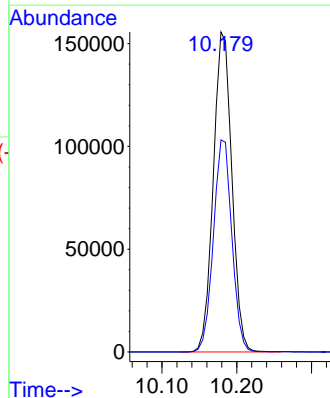
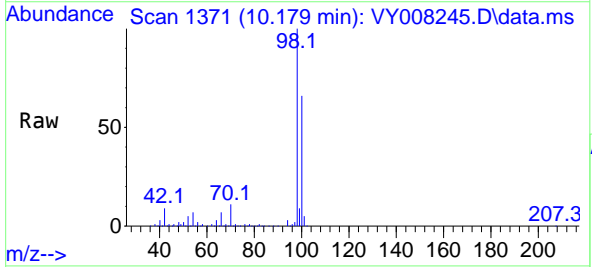
Ion	Ratio	Lower	Upper
117	100		
119	5.9	77.9	116.9#
121	0.0	24.8	37.2#



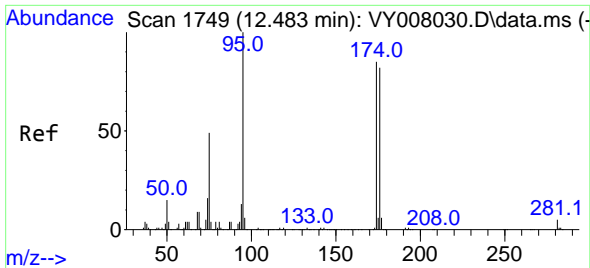
#50  
 Toluene-d8  
 Concen: 52.309 ug/l  
 RT: 10.179 min Scan# 1371  
 Delta R.T. -0.000 min  
 Lab File: VY008245.D  
 Acq: 07 Apr 2022 14:37

Tgt Ion: 98 Resp: 268008

Ion	Ratio	Lower	Upper
98	100		
100	65.9	50.2	75.2





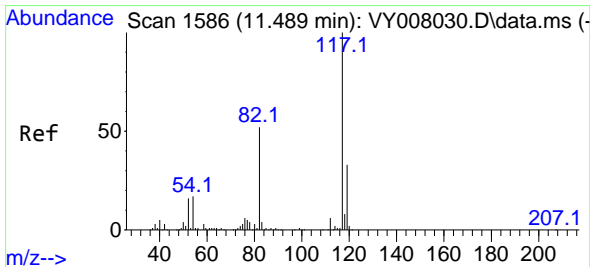
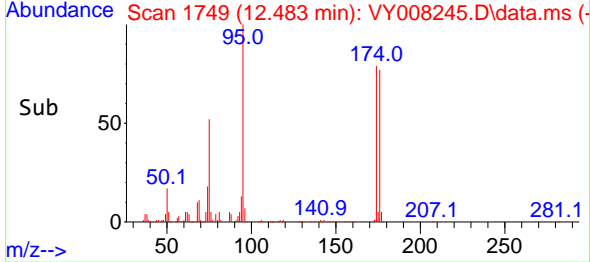
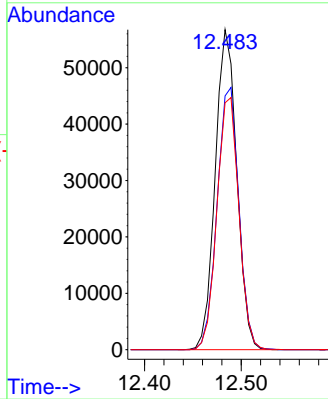
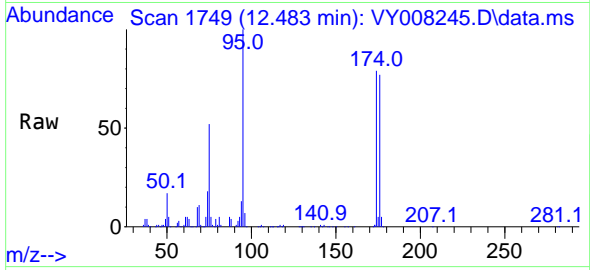


#62  
 4-Bromofluorobenzene  
 Concen: 48.610 ug/l  
 RT: 12.483 min Scan# 11  
 Delta R.T. 0.000 min  
 Lab File: VY008245.D  
 Acq: 07 Apr 2022 14:37

Instrument :  
 MSVOA\_Y  
 ClientSampleId :  
 PF-1

Tgt Ion: 95 Resp: 87868

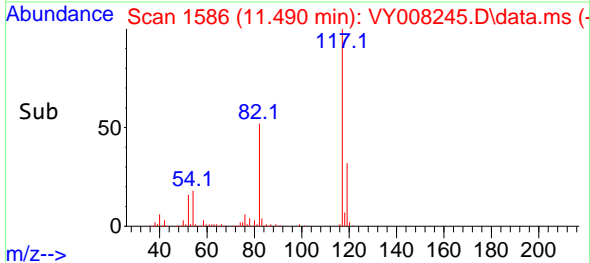
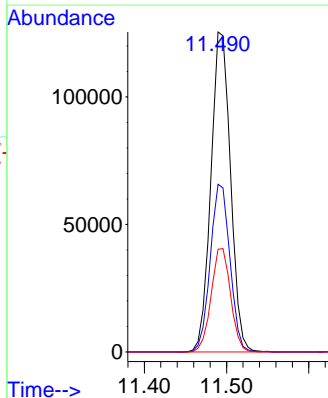
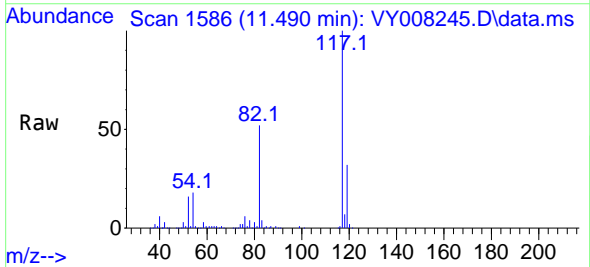
Ion	Ratio	Lower	Upper
95	100		
174	82.7	0.0	177.0
176	80.2	0.0	175.8

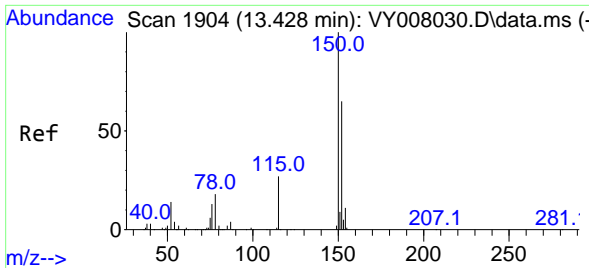


#63  
 Chlorobenzene-d5  
 Concen: 50.000 ug/l  
 RT: 11.490 min Scan# 1586  
 Delta R.T. 0.001 min  
 Lab File: VY008245.D  
 Acq: 07 Apr 2022 14:37

Tgt Ion: 117 Resp: 208232

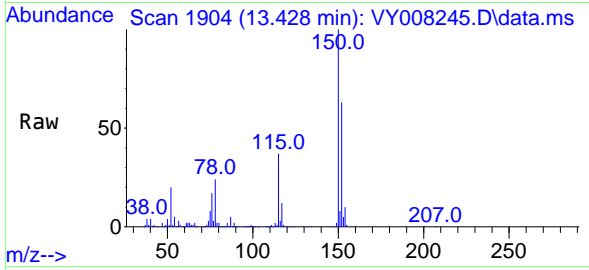
Ion	Ratio	Lower	Upper
117	100		
82	52.4	43.0	64.4
119	32.1	25.4	38.0



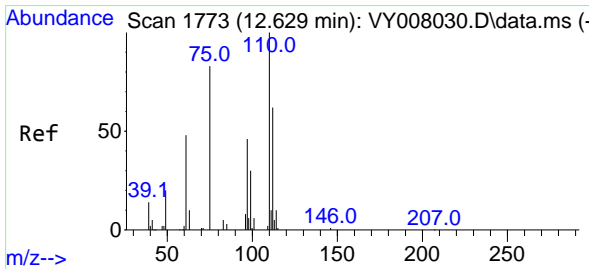
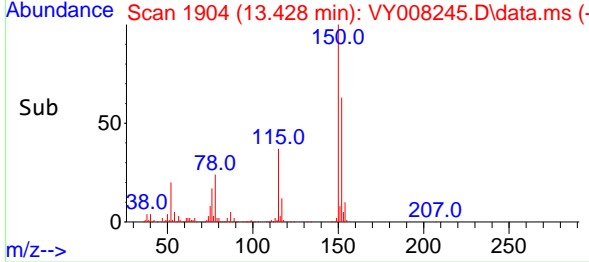
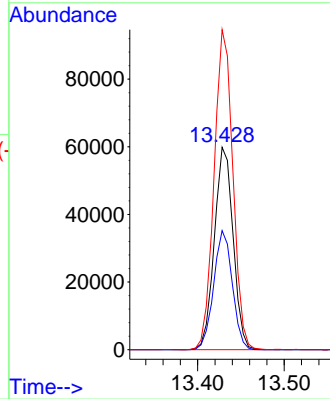


#72  
 1,4-Dichlorobenzene-d4  
 Concen: 50.000 ug/l  
 RT: 13.428 min Scan# 1904  
 Delta R.T. 0.000 min  
 Lab File: VY008245.D  
 Acq: 07 Apr 2022 14:37

Instrument : MSVOA\_Y  
 ClientSampleId : PF-1

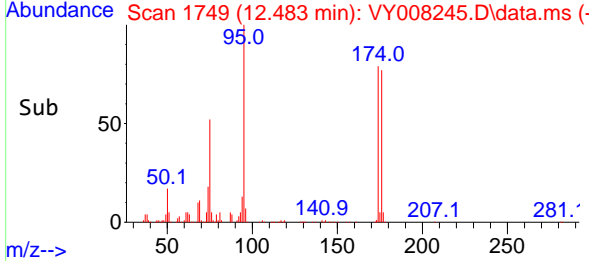
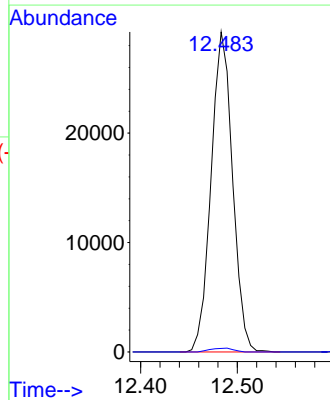
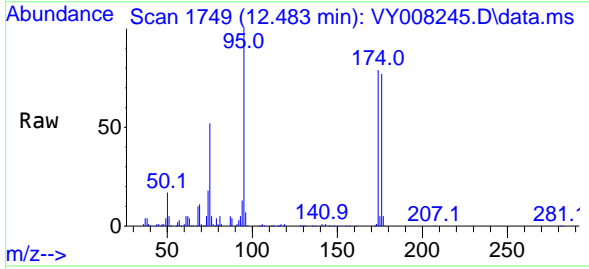


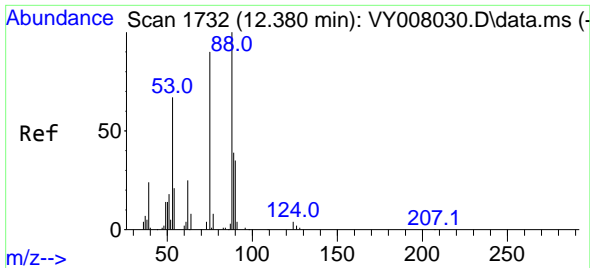
Tgt Ion:152 Resp: 90123  
 Ion Ratio Lower Upper  
 152 100  
 115 58.4 28.2 84.7  
 150 158.0 0.0 347.6



#76  
 1,2,3-Trichloropropane  
 Concen: 41.066 ug/l  
 RT: 12.483 min Scan# 1749  
 Delta R.T. -0.146 min  
 Lab File: VY008245.D  
 Acq: 07 Apr 2022 14:37

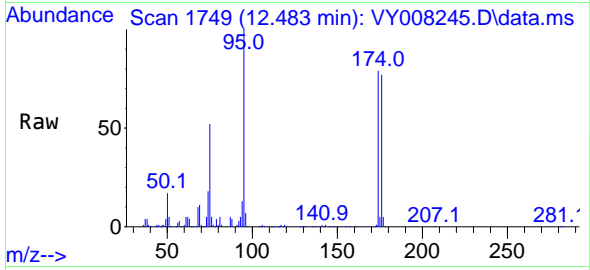
Tgt Ion: 75 Resp: 45115  
 Ion Ratio Lower Upper  
 75 100  
 77 1.3 0.0 0.0#





#81  
 trans-1,4-Dichloro-2-butene  
 Concen: 91.624 ug/l  
 RT: 12.483 min Scan# 11  
 Delta R.T. 0.103 min  
 Lab File: VY008245.D  
 Acq: 07 Apr 2022 14:37

Instrument :  
 MSVOA\_Y  
 ClientSampleId :  
 PF-1



Tgt Ion: 75 Resp: 45115

Ion	Ratio	Lower	Upper
75	100		
53	0.0	85.3	127.9#
89	0.0	37.0	55.4#

