

Data Path : Z:\voasrv\HPCHEM1\MSVOA\_Y\Data\VY040725\  
 Data File : VY021801.D  
 Acq On : 07 Apr 2025 16:19  
 Operator : SY/MD  
 Sample : Q1735-01  
 Misc : 5.01g/5.0mL/MSVOA\_Y/SOIL/A  
 ALS Vial : 9 Sample Multiplier: 1

Instrument :  
 MSVOA\_Y  
 ClientSampleId :  
 50660-50661-50662-5663-COMP

Quant Time: Apr 08 03:35:01 2025  
 Quant Method : Z:\voasrv\HPCHEM1\MSVOA\_Y\methods\82Y032725S.M  
 Quant Title : SW846 8260  
 QLast Update : Fri Mar 28 02:30:29 2025  
 Response via : Initial Calibration

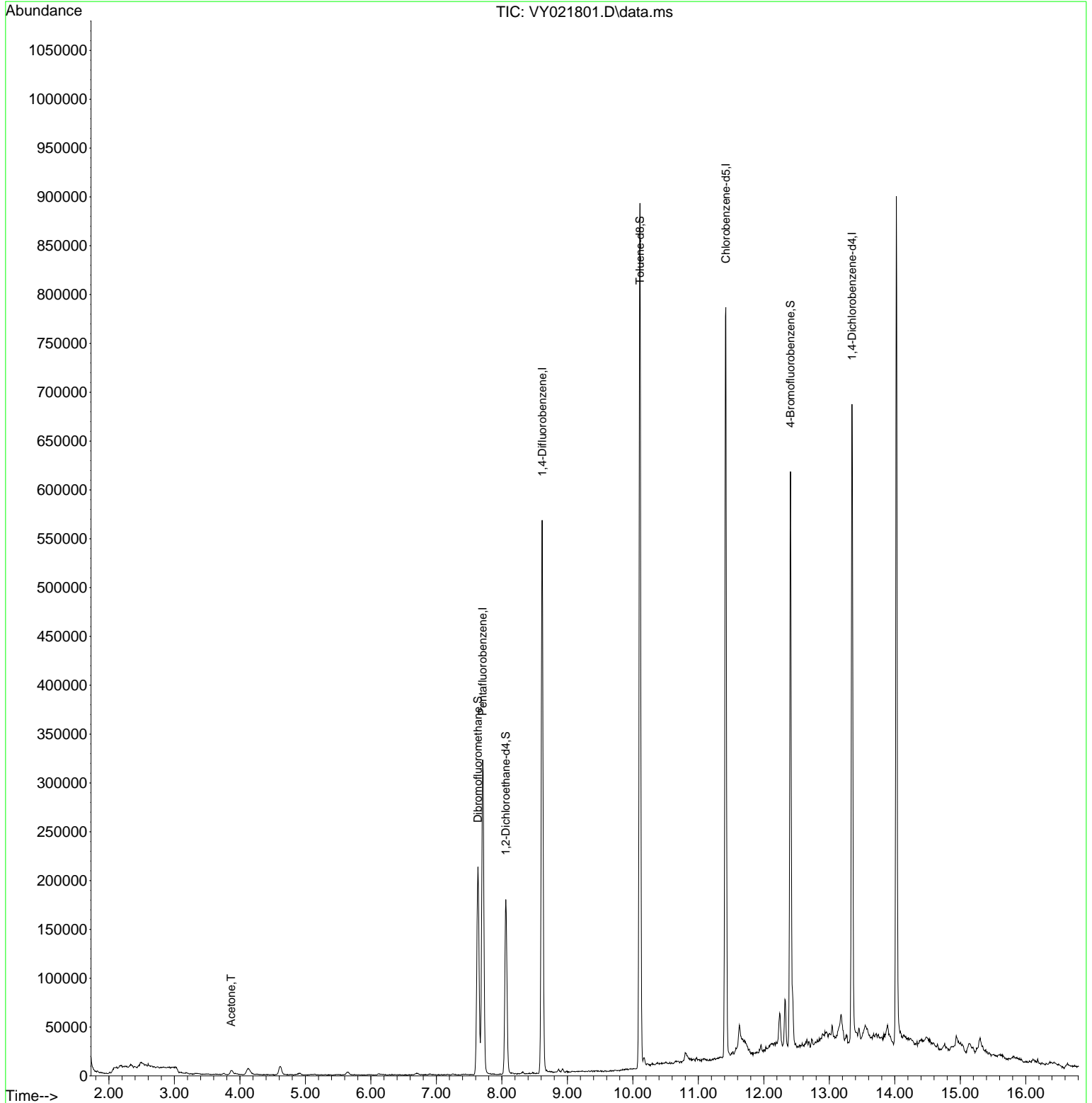
Compound	R.T.	QIon	Response	Conc	Units	Dev(Min)
-----						
Internal Standards						
1) Pentafluorobenzene	7.707	168	245679	50.000	ug/l	0.00
34) 1,4-Difluorobenzene	8.616	114	457070	50.000	ug/l	0.00
63) Chlorobenzene-d5	11.420	117	407823	50.000	ug/l	0.00
72) 1,4-Dichlorobenzene-d4	13.347	152	161426	50.000	ug/l	0.00
System Monitoring Compounds						
33) 1,2-Dichloroethane-d4	8.061	65	141819	53.278	ug/l	0.00
Spiked Amount	50.000	Range	50 - 163	Recovery	=	106.560%
35) Dibromofluoromethane	7.634	113	148759	50.173	ug/l	0.00
Spiked Amount	50.000	Range	54 - 147	Recovery	=	100.340%
50) Toluene-d8	10.109	98	558225	49.490	ug/l	0.00
Spiked Amount	50.000	Range	58 - 134	Recovery	=	98.980%
62) 4-Bromofluorobenzene	12.408	95	177471	46.516	ug/l	0.00
Spiked Amount	50.000	Range	30 - 143	Recovery	=	93.040%
Target Compounds						
16) Acetone	3.867	43	8289	15.215	ug/l	95
-----						

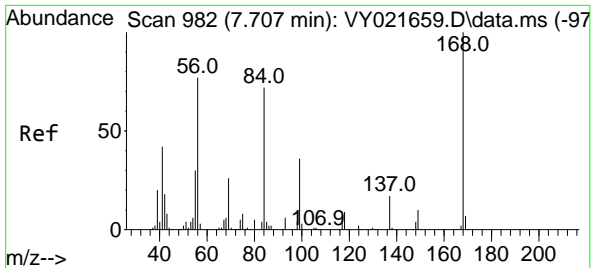
(#) = qualifier out of range (m) = manual integration (+) = signals summed

Data Path : Z:\voasrv\HPCHEM1\MSVOA\_Y\Data\VY040725\  
Data File : VY021801.D  
Acq On : 07 Apr 2025 16:19  
Operator : SY/MD  
Sample : Q1735-01  
Misc : 5.01g/5.0mL/MSVOA\_Y/SOIL/A  
ALS Vial : 9 Sample Multiplier: 1

Instrument :  
MSVOA\_Y  
ClientSampleId :  
50660-50661-50662-5663-COMP

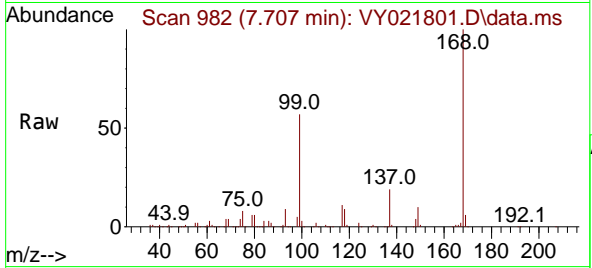
Quant Time: Apr 08 03:35:01 2025  
Quant Method : Z:\voasrv\HPCHEM1\MSVOA\_Y\methods\82Y032725S.M  
Quant Title : SW846 8260  
QLast Update : Fri Mar 28 02:30:29 2025  
Response via : Initial Calibration



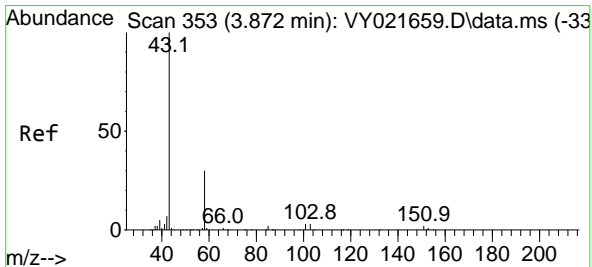
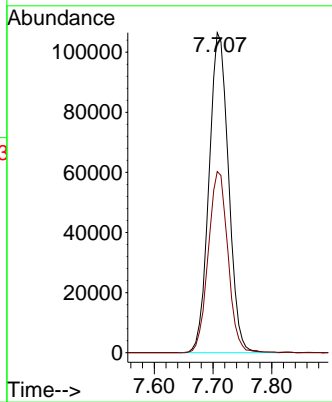
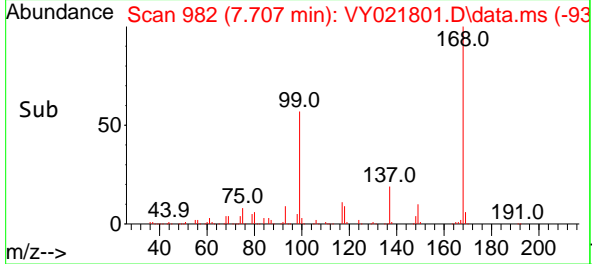


#1  
 Pentafluorobenzene  
 Concen: 50.000 ug/l  
 RT: 7.707 min Scan# 91  
 Delta R.T. 0.000 min  
 Lab File: VY021801.D  
 Acq: 07 Apr 2025 16:19

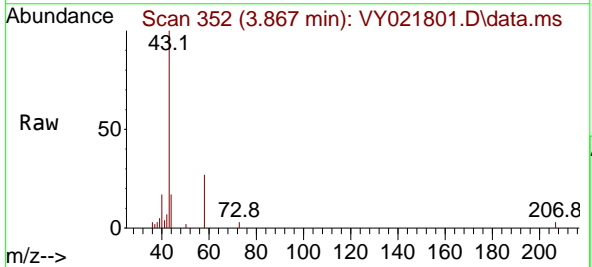
Instrument : MSVOA\_Y  
 ClientSampleId : 50660-50661-50662-5663-COMP



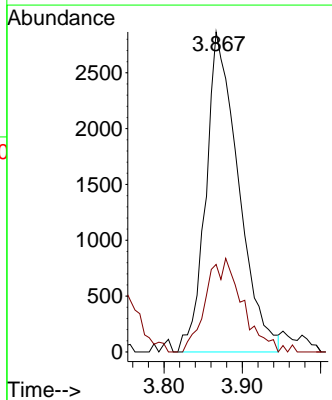
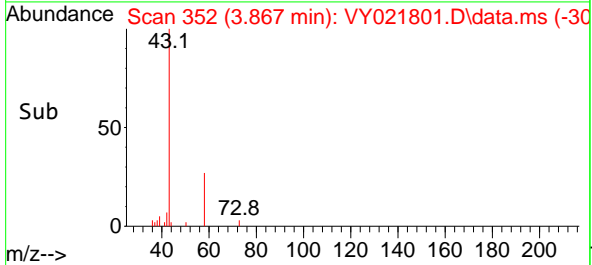
Tgt Ion:168 Resp: 245679  
 Ion Ratio Lower Upper  
 168 100  
 99 56.6 46.7 70.1

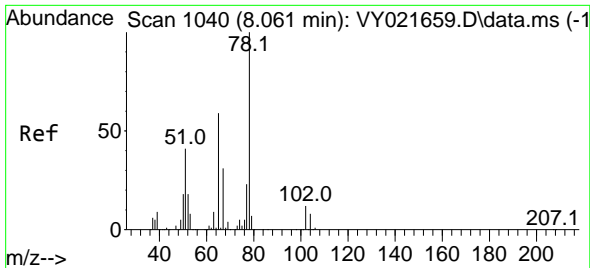


#16  
 Acetone  
 Concen: 15.215 ug/l  
 RT: 3.867 min Scan# 352  
 Delta R.T. -0.006 min  
 Lab File: VY021801.D  
 Acq: 07 Apr 2025 16:19



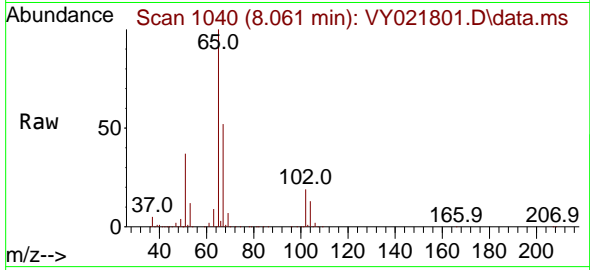
Tgt Ion: 43 Resp: 8289  
 Ion Ratio Lower Upper  
 43 100  
 58 27.4 24.2 36.4



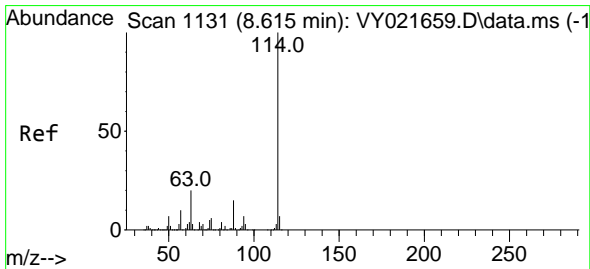
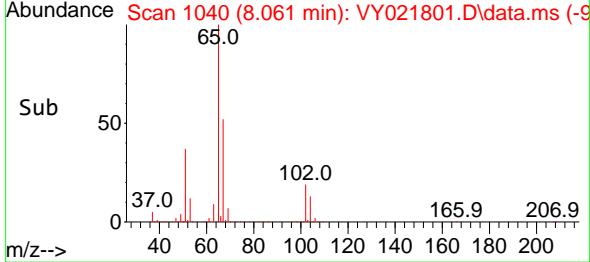
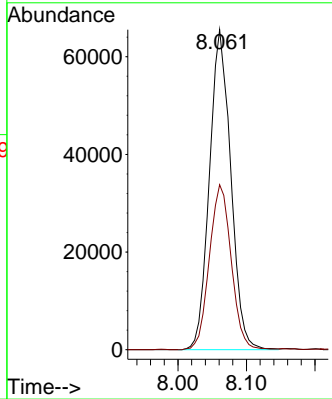


#33  
 1,2-Dichloroethane-d4  
 Concen: 53.278 ug/l  
 RT: 8.061 min Scan# 1040  
 Delta R.T. 0.000 min  
 Lab File: VY021801.D  
 Acq: 07 Apr 2025 16:19

Instrument : MSVOA\_Y  
 ClientSampleId : 50660-50661-50662-5663-COMP

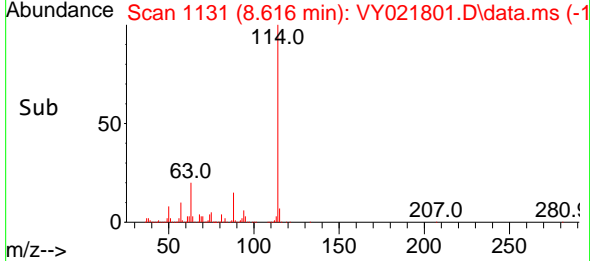
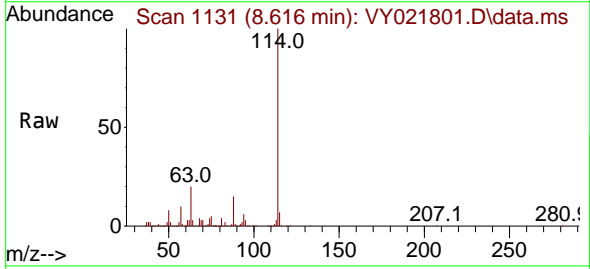
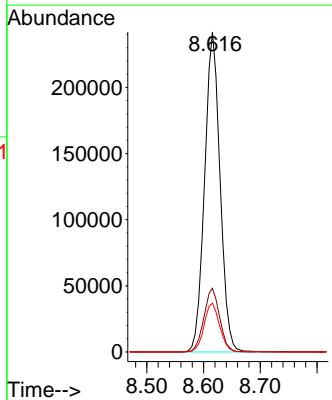


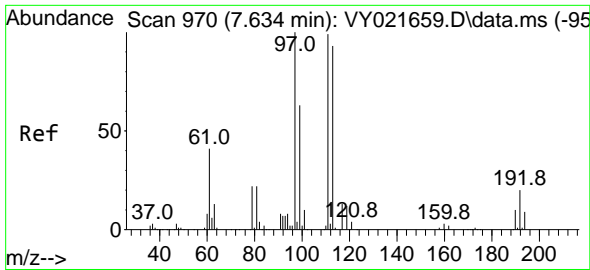
Tgt Ion: 65 Resp: 141819  
 Ion Ratio Lower Upper  
 65 100  
 67 52.8 0.0 104.6



#34  
 1,4-Difluorobenzene  
 Concen: 50.000 ug/l  
 RT: 8.616 min Scan# 1131  
 Delta R.T. 0.000 min  
 Lab File: VY021801.D  
 Acq: 07 Apr 2025 16:19

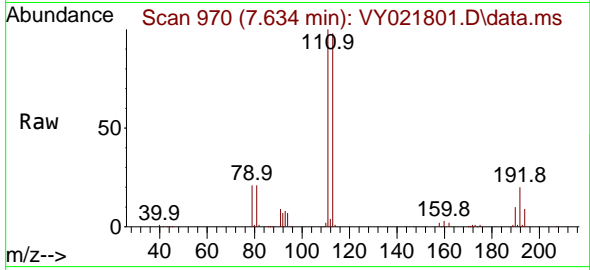
Tgt Ion:114 Resp: 457070  
 Ion Ratio Lower Upper  
 114 100  
 63 19.9 0.0 40.2  
 88 15.2 0.0 29.8



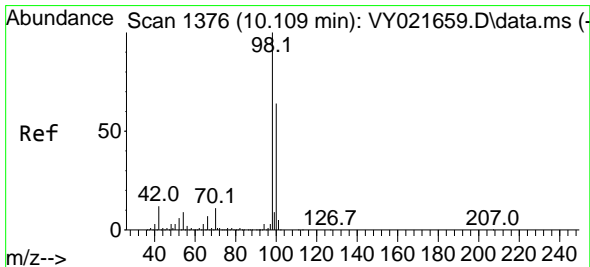
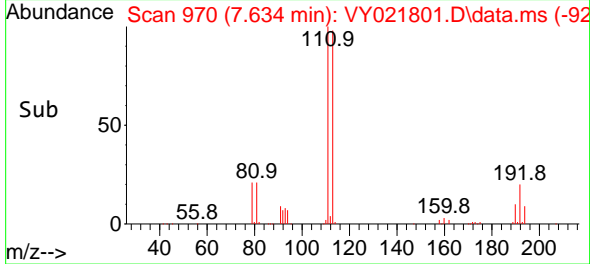
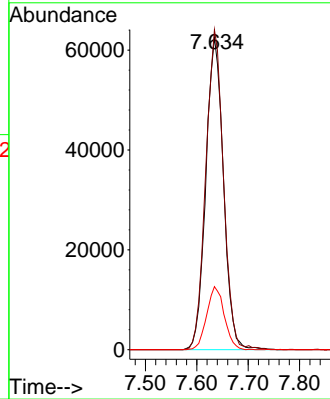


#35  
 Dibromofluoromethane  
 Concen: 50.173 ug/l  
 RT: 7.634 min Scan# 91  
 Delta R.T. 0.000 min  
 Lab File: VY021801.D  
 Acq: 07 Apr 2025 16:19

Instrument : MSVOA\_Y  
 ClientSampleId : 50660-50661-50662-5663-COMP

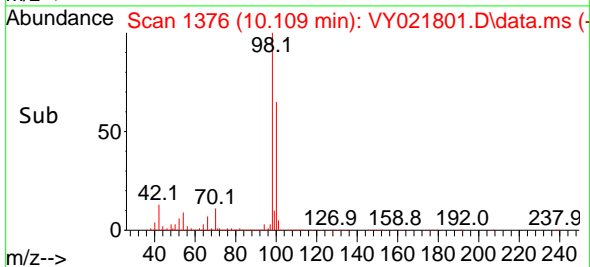
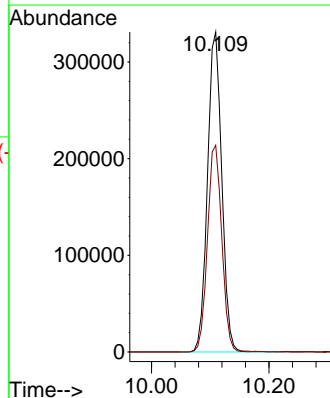
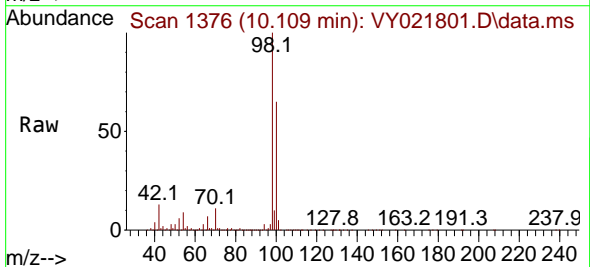


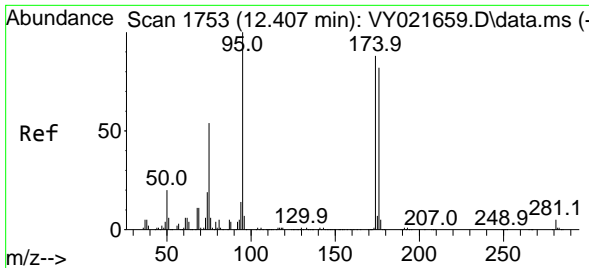
Tgt Ion:113 Resp: 148759  
 Ion Ratio Lower Upper  
 113 100  
 111 103.0 82.6 123.8  
 192 20.2 16.2 24.4



#50  
 Toluene-d8  
 Concen: 49.490 ug/l  
 RT: 10.109 min Scan# 1376  
 Delta R.T. 0.000 min  
 Lab File: VY021801.D  
 Acq: 07 Apr 2025 16:19

Tgt Ion: 98 Resp: 558225  
 Ion Ratio Lower Upper  
 98 100  
 100 64.7 52.1 78.1



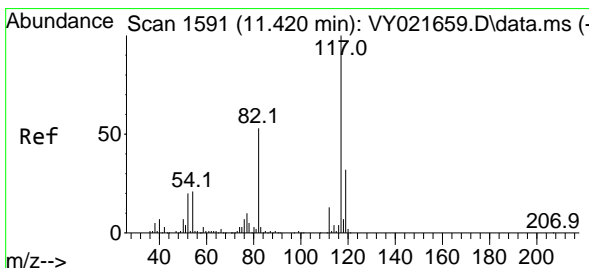
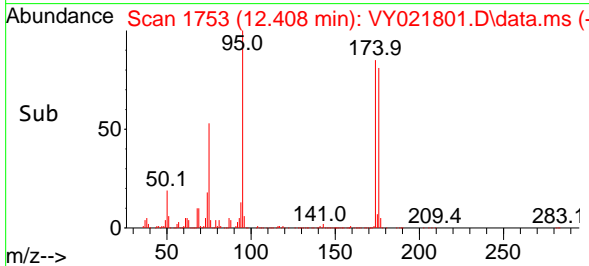
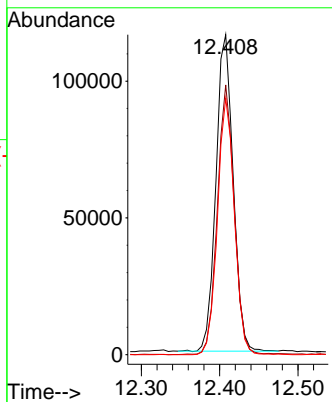
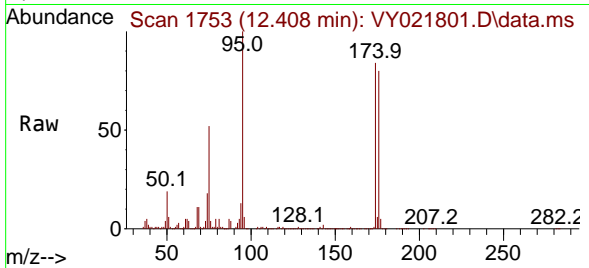


#62  
 4-Bromofluorobenzene  
 Concen: 46.516 ug/l  
 RT: 12.408 min Scan# 1753  
 Delta R.T. 0.000 min  
 Lab File: VY021801.D  
 Acq: 07 Apr 2025 16:19

Instrument : MSVOA\_Y  
 ClientSampleId : 50660-50661-50662-5663-COMP

Tgt Ion: 95 Resp: 177471

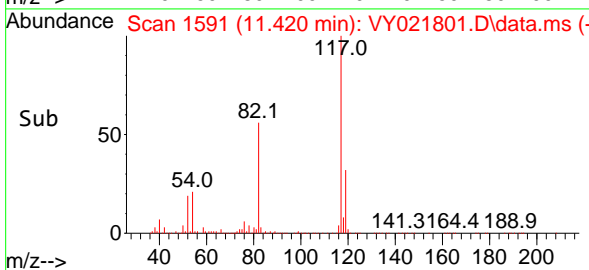
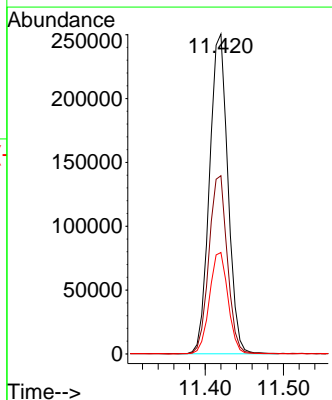
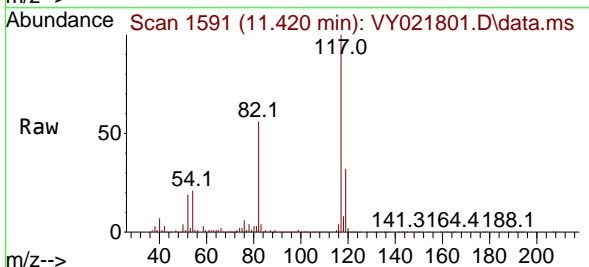
Ion	Ratio	Lower	Upper
95	100		
174	84.3	0.0	170.8
176	79.7	0.0	162.0

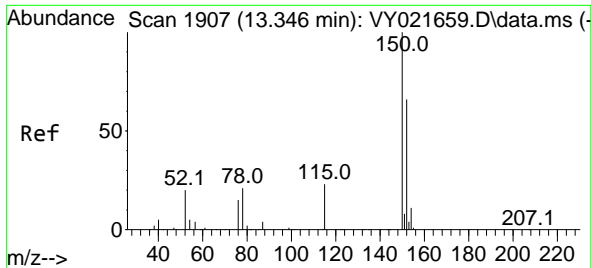


#63  
 Chlorobenzene-d5  
 Concen: 50.000 ug/l  
 RT: 11.420 min Scan# 1591  
 Delta R.T. 0.000 min  
 Lab File: VY021801.D  
 Acq: 07 Apr 2025 16:19

Tgt Ion: 117 Resp: 407823

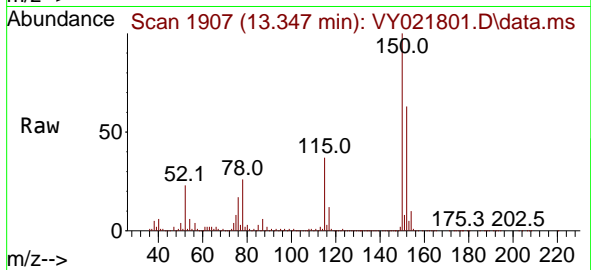
Ion	Ratio	Lower	Upper
117	100		
82	55.6	42.8	64.2
119	31.7	25.7	38.5





#72  
 1,4-Dichlorobenzene-d4  
 Concen: 50.000 ug/l  
 RT: 13.347 min Scan# 1907  
 Delta R.T. 0.000 min  
 Lab File: VY021801.D  
 Acq: 07 Apr 2025 16:19

Instrument : MSVOA\_Y  
 ClientSampleId : 50660-50661-50662-5663-COMP



Tgt Ion:152 Resp: 161426

Ion	Ratio	Lower	Upper
152	100		
115	57.8	28.8	86.5
150	157.7	0.0	348.4

