

Data Path : Z:\voasrv\HPCHEM1\MSVOA_Y\Data\VY041123\
 Data File : VY013240.D
 Acq On : 11 Apr 2023 14:05
 Operator : KP/MD
 Sample : VY0411SBL01
 Misc : 5.00g/5.0mL/MSVOA_Y/SOIL
 ALS Vial : 4 Sample Multiplier: 1

Instrument :
 MSVOA_Y
 ClientSampleId :
 VY0411SBL01

Integration Parameters: RTEINT.P
 Integrator: RTE
 Smoothing : ON Filtering: 5
 Sampling : 1 Min Area: 3 % of largest Peak
 Start Thrs: 0.2 Max Peaks: 100
 Stop Thrs : 0 Peak Location: TOP

If leading or trailing edge < 100 prefer < Baseline drop else tangent >
 Peak separation: 5

Method : Z:\voasrv\HPCHEM1\MSVOA_Y\methods\82Y041123S.M
 Title : SW846 8260

Signal : TIC: VY013240.D\data.ms

peak #	R.T. min	first scan	max scan	last scan	PK TY	peak height	corr. area	corr. % max.	% of total
1	4.716	464	475	488	rBV2	11053	35106	6.44%	1.151%
2	4.924	497	509	526	rVB2	5867	23305	4.28%	0.764%
3	5.753	636	645	653	rBV7	2104	6234	1.14%	0.204%
4	6.978	834	846	865	rBV2	19081	66863	12.27%	2.191%
5	7.716	957	967	973	rBV	61121	147385	27.06%	4.830%
6	7.789	973	979	993	rVB	112535	256112	47.02%	8.393%
7	8.118	1020	1033	1049	rBV2	174398	544735	100.00%	17.852%
8	8.685	1118	1126	1137	rBV	176315	346136	63.54%	11.344%
9	10.179	1364	1371	1381	rBV	226863	389046	71.42%	12.750%
10	10.575	1429	1436	1444	rBV	41054	74097	13.60%	2.428%
11	10.947	1488	1497	1506	rBV	45943	80079	14.70%	2.624%
12	11.319	1552	1558	1565	rVB2	18192	29827	5.48%	0.977%
13	11.489	1579	1586	1597	rBV	248932	402116	73.82%	13.178%
14	12.483	1742	1749	1757	rBV2	170521	278304	51.09%	9.121%
15	13.422	1897	1903	1910	rBV	233874	366522	67.28%	12.012%
16	13.965	1986	1992	1998	rBV	3685	5491	1.01%	0.180%

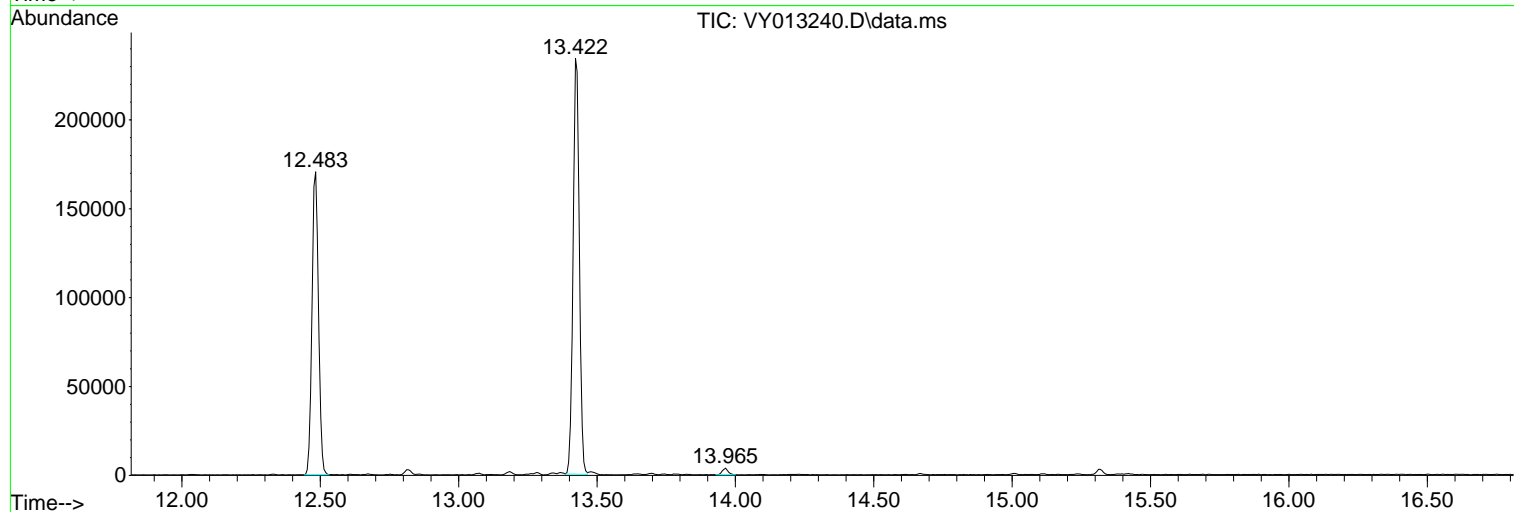
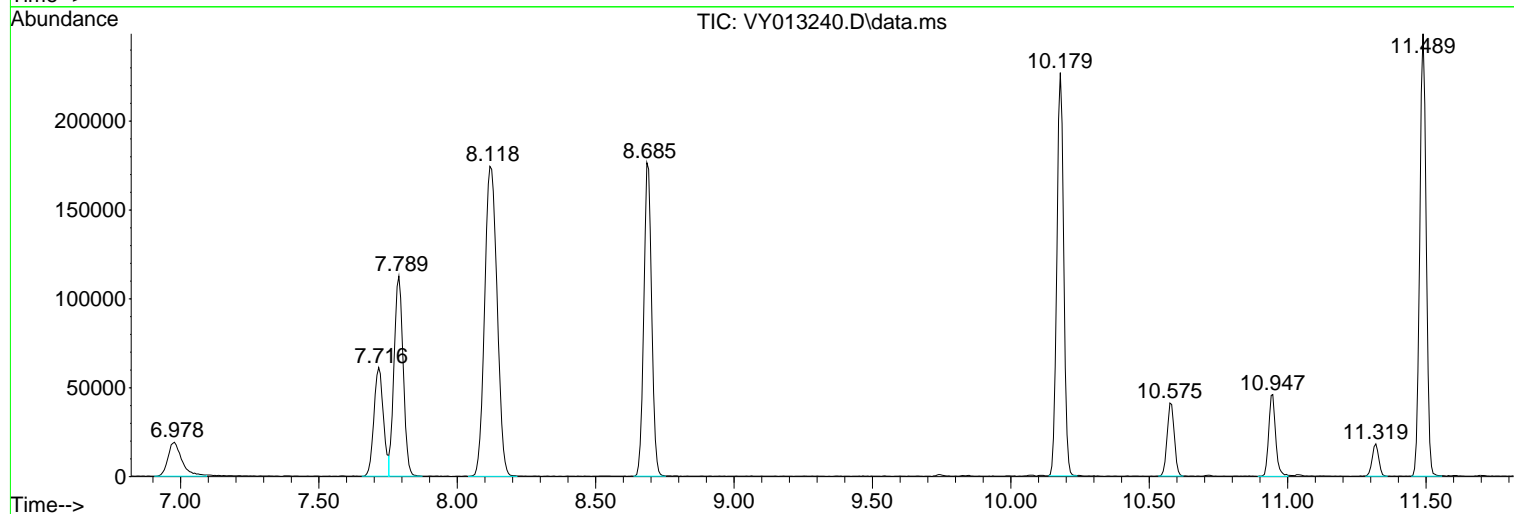
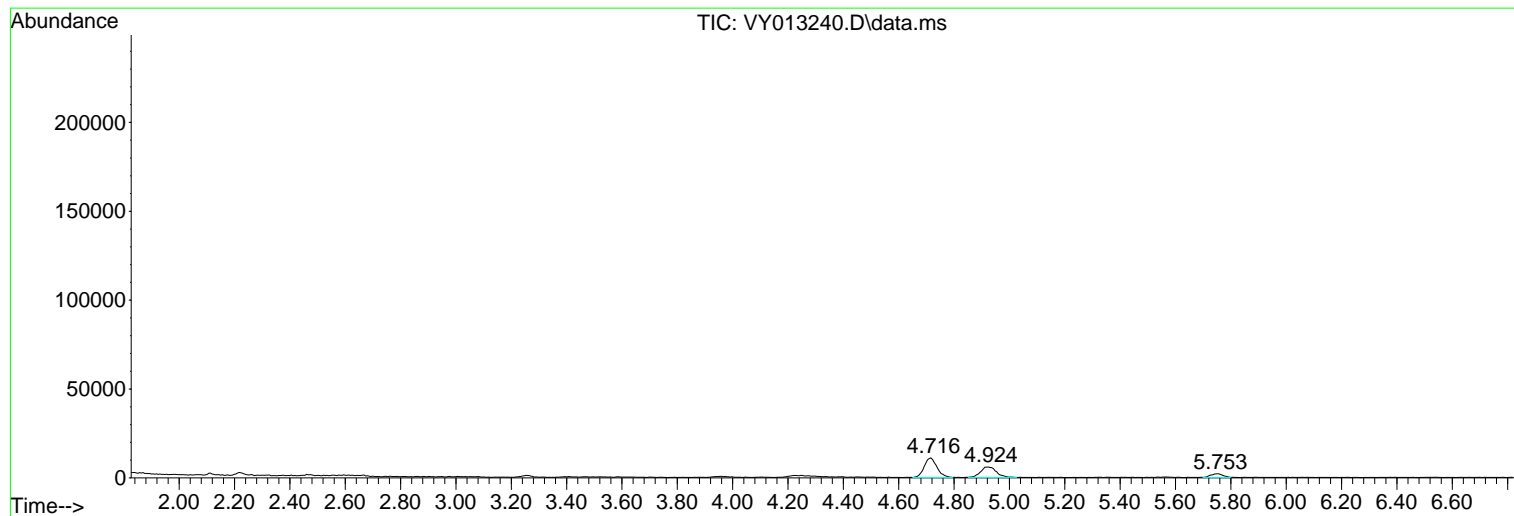
Sum of corrected areas: 3051358

Data Path : Z:\voasrv\HPCHEM1\MSVOA_Y\Data\VY041123\
Data File : VY013240.D
Acq On : 11 Apr 2023 14:05
Operator : KP/MD
Sample : VY0411SBL01
Misc : 5.00g/5.0mL/MSVOA_Y/SOIL
ALS Vial : 4 Sample Multiplier: 1

Instrument :
MSVOA_Y
ClientSampleId :
VY0411SBL01

Quant Method : Z:\voasrv\HPCHEM1\MSVOA_Y\methods\82Y041123S.M
Quant Title : SW846 8260

TIC Library : C:\Database\NIST20.L
TIC Integration Parameters: LSCINT.P



Data Path : Z:\voasrv\HPCHEM1\MSVOA_Y\Data\VY041123\
 Data File : VY013240.D
 Acq On : 11 Apr 2023 14:05
 Operator : KP/MD
 Sample : VY0411SBL01
 Misc : 5.00g/5.0mL/MSVOA_Y/SOIL
 ALS Vial : 4 Sample Multiplier: 1

Instrument :
 MSVOA_Y
 ClientSampleId :
 VY0411SBL01

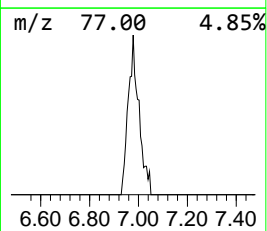
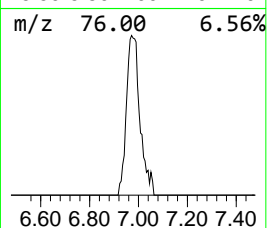
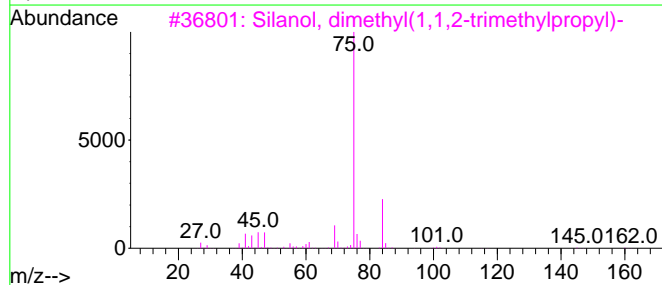
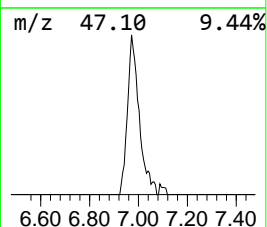
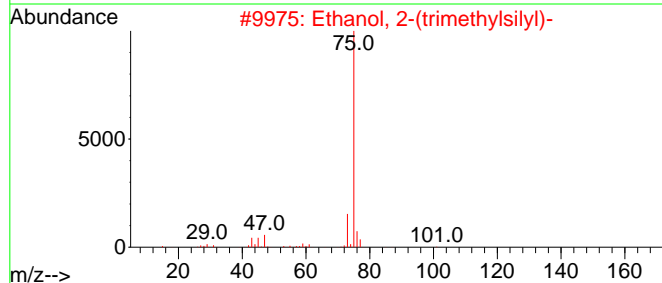
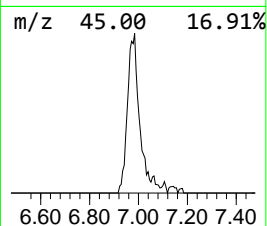
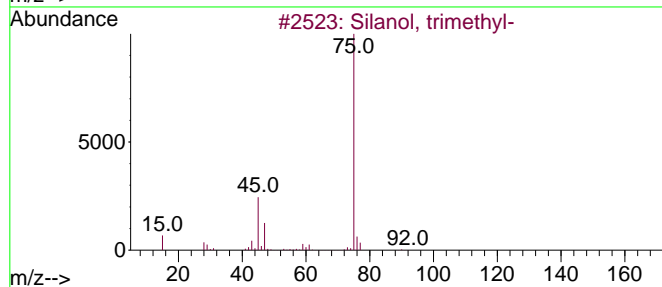
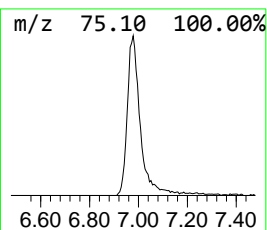
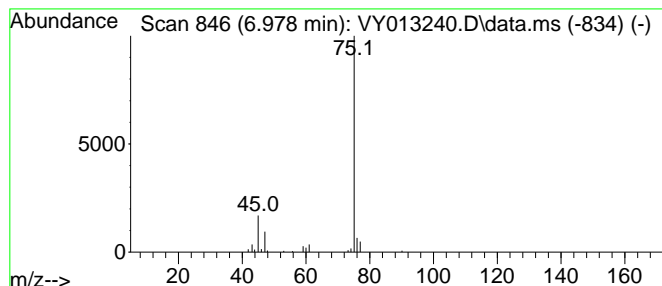
Quant Method : Z:\voasrv\HPCHEM1\MSVOA_Y\methods\82Y041123S.M
 Quant Title : SW846 8260

TIC Library : C:\Database\NIST20.L
 TIC Integration Parameters: LSCINT.P

 Peak Number 2 Silanol, trimethyl- Concentration Rank 1

R.T.	EstConc	Area	Relative to ISTD	R.T.
6.978	13.05 ug/l	66863	Pentafluorobenzene	7.789

Hit#	of	5	Tentative ID	MW	MolForm	CAS#	Qual
1			Silanol, trimethyl-	90	C3H10OSi	001066-40-6	90
2			Ethanol, 2-(trimethylsilyl)-	118	C5H14OSi	002916-68-9	56
3			Silanol, dimethyl(1,1,2-trimethyl...)	160	C8H20OSi	055644-10-5	47
4			2-Propanol, 1,1-dimethoxy-	120	C5H12O3	042919-42-6	39
5			Ethanethioamide	75	C2H5NS	000062-55-5	38



Data Path : Z:\voasrv\HPCHEM1\MSVOA_Y\Data\VY041123\
 Data File : VY013240.D
 Acq On : 11 Apr 2023 14:05
 Operator : KP/MD
 Sample : VY0411SBL01
 Misc : 5.00g/5.0mL/MSVOA_Y/SOIL
 ALS Vial : 4 Sample Multiplier: 1

Instrument :
 MSVOA_Y
 ClientSampleId :
 VY0411SBL01

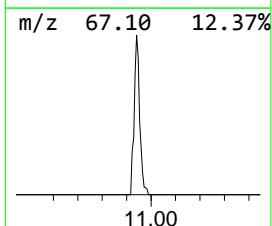
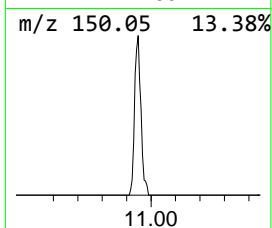
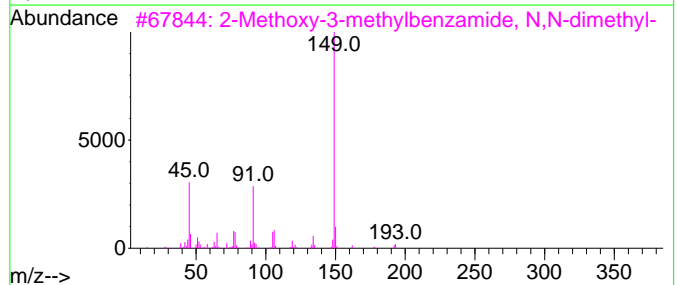
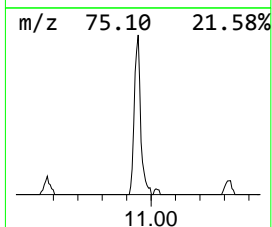
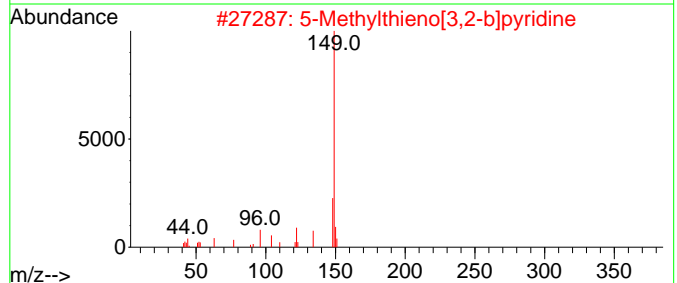
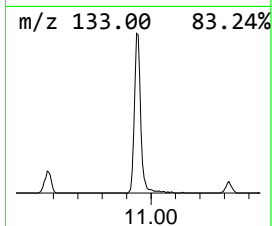
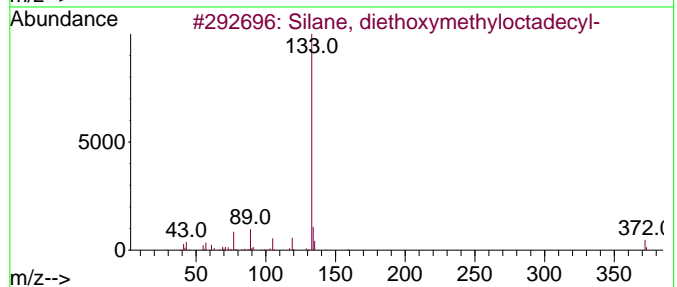
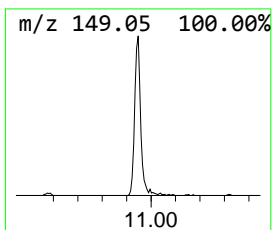
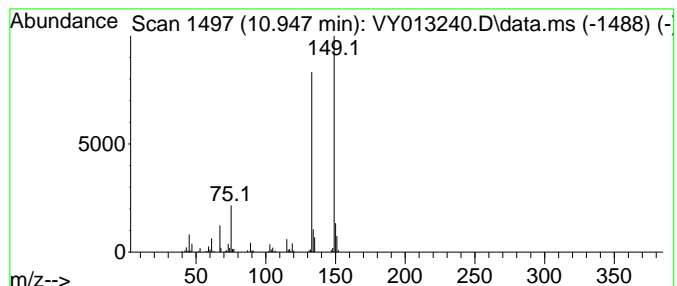
Quant Method : Z:\voasrv\HPCHEM1\MSVOA_Y\methods\82Y041123S.M
 Quant Title : SW846 8260

TIC Library : C:\Database\NIST20.L
 TIC Integration Parameters: LSCINT.P

 Peak Number 4 unknown10.947 Concentration Rank 2

R.T.	EstConc	Area	Relative to ISTD	R.T.
10.947	9.96 ug/l	80079	Chlorobenzene-d5	11.489

Hit#	of	5	Tentative ID	MW	MolForm	CAS#	Qual
1			Silane, diethoxymethyloctadecyl-	386	C23H50O2Si	067859-75-0	27
2			5-Methylthieno[3,2-b]pyridine	149	C8H7NS	001759-29-1	25
3			2-Methoxy-3-methylbenzamide, N,N...	193	C11H15NO2	1369798-01-5	25
4			4-Ethylbenzoic acid, cyclohexyl ...	232	C15H20O2	1000293-32-1	25
5			1H-Indole-3-thiol	149	C8H7NS	000480-94-4	17



Data Path : Z:\voasrv\HPCHEM1\MSVOA_Y\Data\VY041123\
Data File : VY013240.D
Acq On : 11 Apr 2023 14:05
Operator : KP/MD
Sample : VY0411SBL01
Misc : 5.00g/5.0mL/MSVOA_Y/SOIL
ALS Vial : 4 Sample Multiplier: 1

Instrument :
MSVOA_Y
ClientSampleId :
VY0411SBL01

Quant Method : Z:\voasrv\HPCHEM1\MSVOA_Y\methods\82Y041123S.M
Quant Title : SW846 8260

TIC Library : C:\Database\NIST20.L
TIC Integration Parameters: LSCINT.P

TIC Top Hit name	RT	EstConc	Units	Response	--Internal Standard--			
					#	RT	Resp	Conc
Silanol, trimet...	6.978	13.1	ug/l	66863	1	7.789	256112	50.0
unknown10.947	10.947	10.0	ug/l	80079	3	11.489	402116	50.0