

Data Path : Z:\voasrv\HPCHEM1\MSVOA_Y\Data\VY041422\
 Data File : VY008334.D
 Acq On : 14 Apr 2022 17:48
 Operator : KP/MD
 Sample : N2401-04
 Misc : 4.31g/5.0mL/MSVOA_Y/SOIL
 ALS Vial : 14 Sample Multiplier: 1

Instrument :
 MSVOA_Y
 ClientSampleId :
 CL-4-11.5

Integration Parameters: RTEINT.P

Integrator: RTE
 Smoothing : ON Filtering: 5
 Sampling : 1 Min Area: 3 % of largest Peak
 Start Thrs: 0.2 Max Peaks: 100
 Stop Thrs : 0 Peak Location: TOP

If leading or trailing edge < 100 prefer < Baseline drop else tangent >
 Peak separation: 5

Method : Z:\voasrv\HPCHEM1\MSVOA_Y\methods\82Y040822S.M
 Title : SW846 8260

Signal : TIC: VY008334.D\data.ms

peak #	R.T. min	first scan	max scan	last scan	PK TY	peak height	corr. area	corr. % max.	% of total
1	7.716	957	967	972	rBV	83020	197163	18.99%	5.270%
2	7.783	972	978	993	rVB2	132926	306473	29.52%	8.191%
3	8.136	1028	1036	1048	rBV	79197	174137	16.78%	4.654%
4	8.685	1118	1126	1136	rBV	215422	413267	39.81%	11.046%
5	10.179	1363	1371	1379	rBV	339672	570107	54.92%	15.238%
6	11.489	1577	1586	1596	rBV	331103	525793	50.65%	14.053%
7	12.489	1741	1750	1759	rBV3	586004	1038031	100.00%	27.745%
8	13.422	1897	1903	1911	rVB	319699	490121	47.22%	13.100%
9	13.964	1986	1992	2000	rVB	16984	26275	2.53%	0.702%

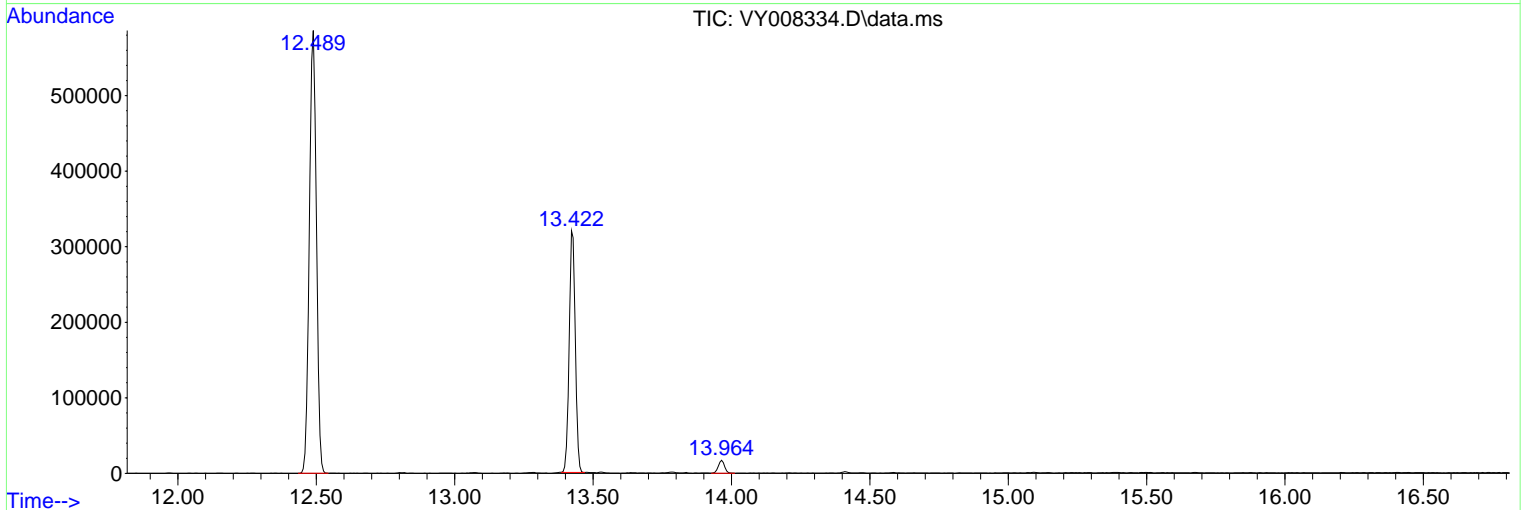
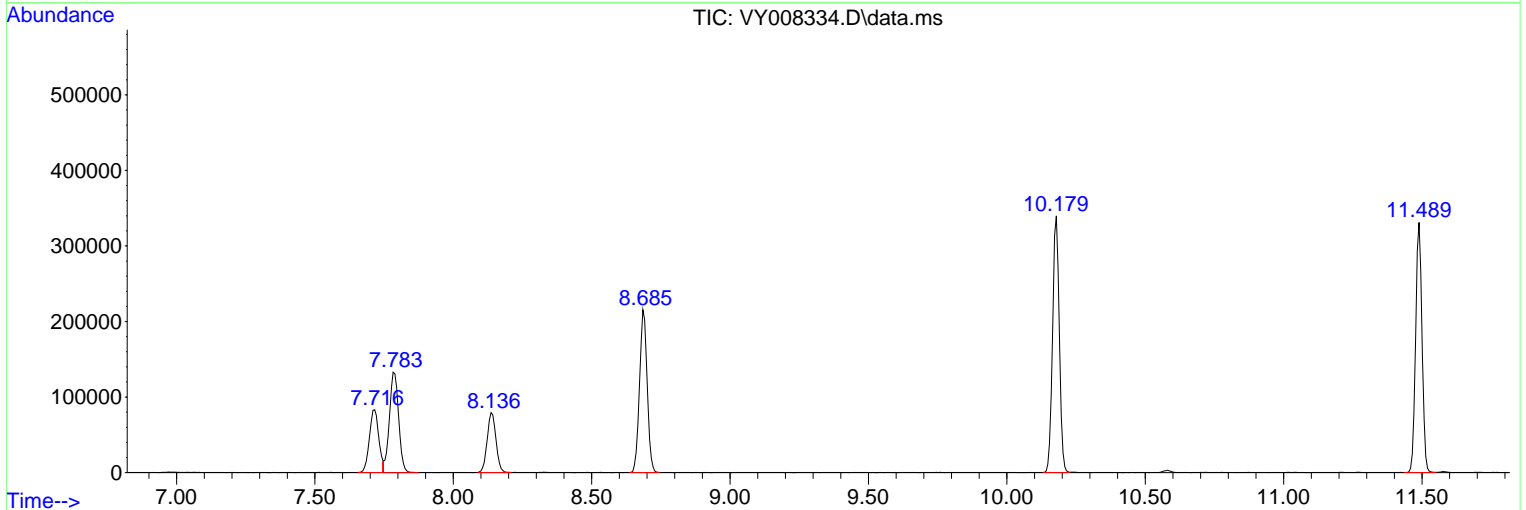
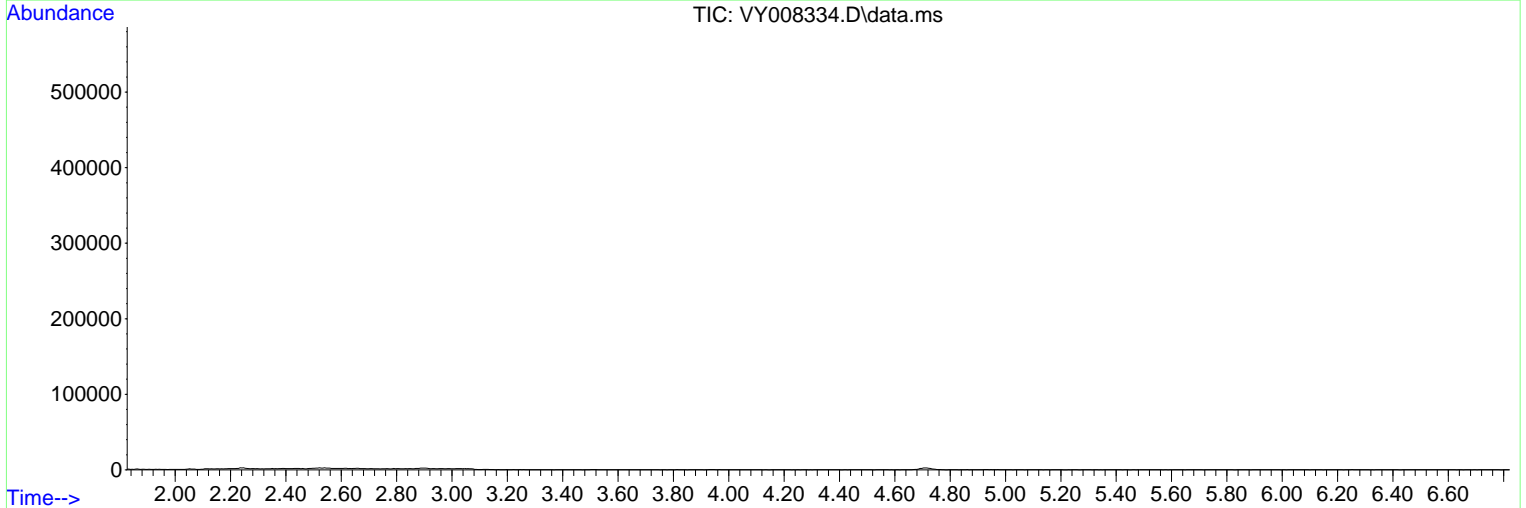
Sum of corrected areas: 3741367

Data Path : Z:\voasrv\HPCHEM1\MSVOA_Y\Data\VY041422\
 Data File : VY008334.D
 Acq On : 14 Apr 2022 17:48
 Operator : KP/MD
 Sample : N2401-04
 Misc : 4.31g/5.0mL/MSVOA_Y/SOIL
 ALS Vial : 14 Sample Multiplier: 1

Instrument :
 MSVOA_Y
 ClientSampleId :
 CL-4-11.5

Quant Method : Z:\voasrv\HPCHEM1\MSVOA_Y\methods\82Y040822S.M
 Quant Title : SW846 8260

TIC Library : C:\Database\NIST20.L
 TIC Integration Parameters: LSCINT.P



Library Search Compound Report

Data Path : Z:\voasrv\HPCHEM1\MSVOA_Y\Data\VY041422\
Data File : VY008334.D
Acq On : 14 Apr 2022 17:48
Operator : KP/MD
Sample : N2401-04
Misc : 4.31g/5.0mL/MSVOA_Y/SOIL
ALS Vial : 14 Sample Multiplier: 1

Instrument :
MSVOA_Y
ClientSampleId :
CL-4-11.5

Quant Method : Z:\voasrv\HPCHEM1\MSVOA_Y\methods\82Y040822S.M
Quant Title : SW846 8260

TIC Library : C:\Database\NIST20.L
TIC Integration Parameters: LSCINT.P

No Library Search Compounds Detected

Data Path : Z:\voasrv\HPCHEM1\MSVOA_Y\Data\VY041422\
Data File : VY008334.D
Acq On : 14 Apr 2022 17:48
Operator : KP/MD
Sample : N2401-04
Misc : 4.31g/5.0mL/MSVOA_Y/SOIL
ALS Vial : 14 Sample Multiplier: 1

Instrument :
MSVOA_Y
ClientSampleId :
CL-4-11.5

Quant Method : Z:\voasrv\HPCHEM1\MSVOA_Y\methods\82Y040822S.M
Quant Title : SW846 8260

TIC Library : C:\Database\NIST20.L
TIC Integration Parameters: LSCINT.P

TIC Top Hit name	RT	EstConc	Units	Response	--Internal Standard--		
					#	RT	Resp Conc
