

Data Path : Z:\voasrv\HPCHEM1\MSVOA_Y\Data\VY041425\
 Data File : VY021871.D
 Acq On : 14 Apr 2025 15:50
 Operator : SY/MD
 Sample : Q1783-01
 Misc : 5.05g/5.0mL/MSVOA_Y/SOIL/B
 ALS Vial : 8 Sample Multiplier: 1

Instrument :
 MSVOA_Y
 ClientSampleId :
 SU-03-41125

Integration Parameters: RTEINT.P

Integrator: RTE
 Smoothing : ON Filtering: 5
 Sampling : 1 Min Area: 3 % of largest Peak
 Start Thrs: 0.2 Max Peaks: 100
 Stop Thrs : 0 Peak Location: TOP

If leading or trailing edge < 100 prefer < Baseline drop else tangent >
 Peak separation: 5

Method : Z:\voasrv\HPCHEM1\MSVOA_Y\methods\82Y032725S.M
 Title : SW846 8260

Signal : TIC: VY021871.D\data.ms

peak #	R.T. min	first scan	max scan	last scan	PK TY	peak height	corr. area	corr. % max.	% of total
1	7.634	960	970	976	rBV	269754	653582	34.15%	2.347%
2	7.707	976	982	996	rVB	454623	1020966	53.35%	3.666%
3	8.061	1029	1040	1052	rBV	222545	475370	24.84%	1.707%
4	8.616	1120	1131	1142	rBV	723751	1413199	73.85%	5.074%
5	10.109	1367	1376	1382	rBV	1132240	1913712	100.00%	6.871%
6	10.170	1382	1386	1394	rVB	42642	75464	3.94%	0.271%
7	10.963	1512	1516	1520	rVB2	12968	19909	1.04%	0.071%
8	11.213	1551	1557	1566	rVV4	16152	38243	2.00%	0.137%
9	11.310	1566	1573	1577	rBV2	15178	28639	1.50%	0.103%
10	11.414	1583	1590	1600	rVB	1027206	1629428	85.14%	5.850%
11	11.518	1601	1607	1616	rVV	116941	190793	9.97%	0.685%
12	11.627	1616	1625	1635	rVV2	279760	615256	32.15%	2.209%
13	11.707	1635	1638	1643	rVB	16105	24912	1.30%	0.089%
14	11.957	1669	1679	1687	rBV	246564	455595	23.81%	1.636%
15	12.127	1703	1707	1710	rBV3	17116	25698	1.34%	0.092%
16	12.176	1710	1715	1718	rVV3	19949	33628	1.76%	0.121%
17	12.255	1723	1728	1735	rVB	61736	103056	5.39%	0.370%
18	12.408	1747	1753	1758	rBV	749365	1143831	59.77%	4.107%
19	12.597	1776	1784	1788	rBV	123883	222436	11.62%	0.799%
20	12.658	1788	1794	1797	rVV	452246	700101	36.58%	2.514%
21	12.694	1797	1800	1803	rVV	219010	334600	17.48%	1.201%
22	12.731	1803	1806	1812	rVV2	344935	540501	28.24%	1.941%
23	12.786	1812	1815	1826	rVB8	21949	45337	2.37%	0.163%
24	12.895	1827	1833	1840	rBV	272307	418176	21.85%	1.501%
25	12.962	1840	1844	1851	rVB3	40996	68554	3.58%	0.246%
26	13.042	1851	1857	1863	rBV	591811	887352	46.37%	3.186%
27	13.176	1872	1879	1883	rVB2	68414	113490	5.93%	0.407%
28	13.237	1883	1889	1894	rBV2	129096	208826	10.91%	0.750%
29	13.292	1894	1898	1901	rVV2	63668	89234	4.66%	0.320%
30	13.347	1901	1907	1911	rVV	899490	1519665	79.41%	5.456%
31	13.377	1911	1912	1917	rVV	340996	331779	17.34%	1.191%
32	13.426	1917	1920	1927	rVV5	23555	55802	2.92%	0.200%
33	13.517	1930	1935	1936	rVV	92269	127444	6.66%	0.458%
34	13.548	1936	1940	1943	rVV	435034	650925	34.01%	2.337%
35	13.590	1943	1947	1955	rVV4	299743	580085	30.31%	2.083%
36	13.676	1955	1961	1966	rVV2	196721	298271	15.59%	1.071%

Data Path : Z:\voasrv\HPCHEM1\MSVOA_Y\Data\VY041425\
 Data File : VY021871.D
 Acq On : 14 Apr 2025 15:50
 Operator : SY/MD
 Sample : Q1783-01
 Misc : 5.05g/5.0mL/MSVOA_Y/SOIL/B
 ALS Vial : 8 Sample Multiplier: 1

Instrument :
 MSVOA_Y
 ClientSampleId :
 SU-03-41125

Integration Parameters: RTEINT.P

Integrator: RTE
 Smoothing : ON
 Sampling : 1
 Start Thrs : 0.2
 Stop Thrs : 0

Filtering: 5
 Min Area: 3 % of largest Peak
 Max Peaks: 100
 Peak Location: TOP

If leading or trailing edge < 100 prefer < Baseline drop else tangent >
 Peak separation: 5

Method : Z:\voasrv\HPCHEM1\MSVOA_Y\methods\82Y032725S.M
 Title : SW846 8260

37	13.743	1966	1972	1978	rVV	155125	251378	13.14%	0.903%
38	13.804	1978	1982	1985	rVV	168332	273059	14.27%	0.980%
39	13.834	1985	1987	1992	rVV	190000	267931	14.00%	0.962%
40	13.895	1992	1997	2001	rVV	287768	417450	21.81%	1.499%
41	13.950	2001	2006	2009	rVV	65407	100889	5.27%	0.362%
42	13.999	2009	2014	2019	rVV	295838	477620	24.96%	1.715%
43	14.078	2019	2027	2031	rVV4	49134	123844	6.47%	0.445%
44	14.133	2031	2036	2040	rVV2	108235	189225	9.89%	0.679%
45	14.176	2040	2043	2046	rVV3	59265	105460	5.51%	0.379%
46	14.218	2046	2050	2053	rVV	150002	256329	13.39%	0.920%
47	14.255	2053	2056	2060	rVV	252191	339266	17.73%	1.218%
48	14.304	2060	2064	2067	rVV	125883	178567	9.33%	0.641%
49	14.340	2067	2070	2074	rVV2	97584	137576	7.19%	0.494%
50	14.401	2077	2080	2081	rVV3	31425	36098	1.89%	0.130%
51	14.438	2082	2086	2090	rVV2	106043	179708	9.39%	0.645%
52	14.487	2090	2094	2098	rVV2	254323	435434	22.75%	1.563%
53	14.529	2098	2101	2106	rVB	215231	307902	16.09%	1.105%
54	14.602	2106	2113	2119	rBV4	484724	1048085	54.77%	3.763%
55	14.657	2119	2122	2128	rVV2	97027	167876	8.77%	0.603%
56	14.749	2132	2137	2145	rVV	378891	607709	31.76%	2.182%
57	14.822	2145	2149	2151	rVV2	63545	97216	5.08%	0.349%
58	14.865	2151	2156	2159	rVV2	202673	408919	21.37%	1.468%
59	14.895	2159	2161	2167	rVV	142379	220331	11.51%	0.791%
60	14.968	2167	2173	2180	rVV	198029	430547	22.50%	1.546%
61	15.054	2184	2187	2192	rVB5	31819	50893	2.66%	0.183%
62	15.145	2192	2202	2207	rBV3	98893	263735	13.78%	0.947%
63	15.200	2207	2211	2216	rBV	181067	280531	14.66%	1.007%
64	15.261	2216	2221	2231	rVV6	124395	435160	22.74%	1.562%
65	15.340	2231	2234	2242	rVB4	93231	158676	8.29%	0.570%
66	15.432	2242	2249	2256	rBV3	125422	244244	12.76%	0.877%
67	15.511	2258	2262	2266	rVB3	19004	32054	1.67%	0.115%
68	15.596	2266	2276	2277	rBV4	91321	199378	10.42%	0.716%
69	15.627	2277	2281	2291	rVB	340655	612006	31.98%	2.197%
70	15.712	2291	2295	2300	rBV4	37723	70295	3.67%	0.252%
71	15.791	2301	2308	2313	rBV2	66342	146214	7.64%	0.525%
72	15.931	2324	2331	2338	rBV	174991	350399	18.31%	1.258%
73	16.120	2353	2362	2367	rBV2	153884	319127	16.68%	1.146%
74	16.181	2367	2372	2379	rVV2	99504	188283	9.84%	0.676%
75	16.377	2397	2404	2410	rBV6	67436	178801	9.34%	0.642%
76	16.431	2410	2413	2419	rVV4	34323	62252	3.25%	0.224%

Data Path : Z:\voasrv\HPCHEM1\MSVOA_Y\Data\VY041425\
Data File : VY021871.D
Acq On : 14 Apr 2025 15:50
Operator : SY/MD
Sample : Q1783-01
Misc : 5.05g/5.0mL/MSVOA_Y/SOIL/B
ALS Vial : 8 Sample Multiplier: 1

Instrument :
MSVOA_Y
ClientSampleId :
SU-03-41125

Integration Parameters: RTEINT.P

Integrator: RTE

Smoothing : ON

Filtering: 5

Sampling : 1

Min Area: 3 % of largest Peak

Start Thrs: 0.2

Max Peaks: 100

Stop Thrs : 0

Peak Location: TOP

If leading or trailing edge < 100 prefer < Baseline drop else tangent >

Peak separation: 5

Method : Z:\voasrv\HPCHEM1\MSVOA_Y\methods\82Y032725S.M

Title : SW846 8260

77	16.511	2420	2426	2435	rVB4	37626	97137	5.08%	0.349%
78	16.718	2452	2460	2468	rVB4	14885	51673	2.70%	0.186%

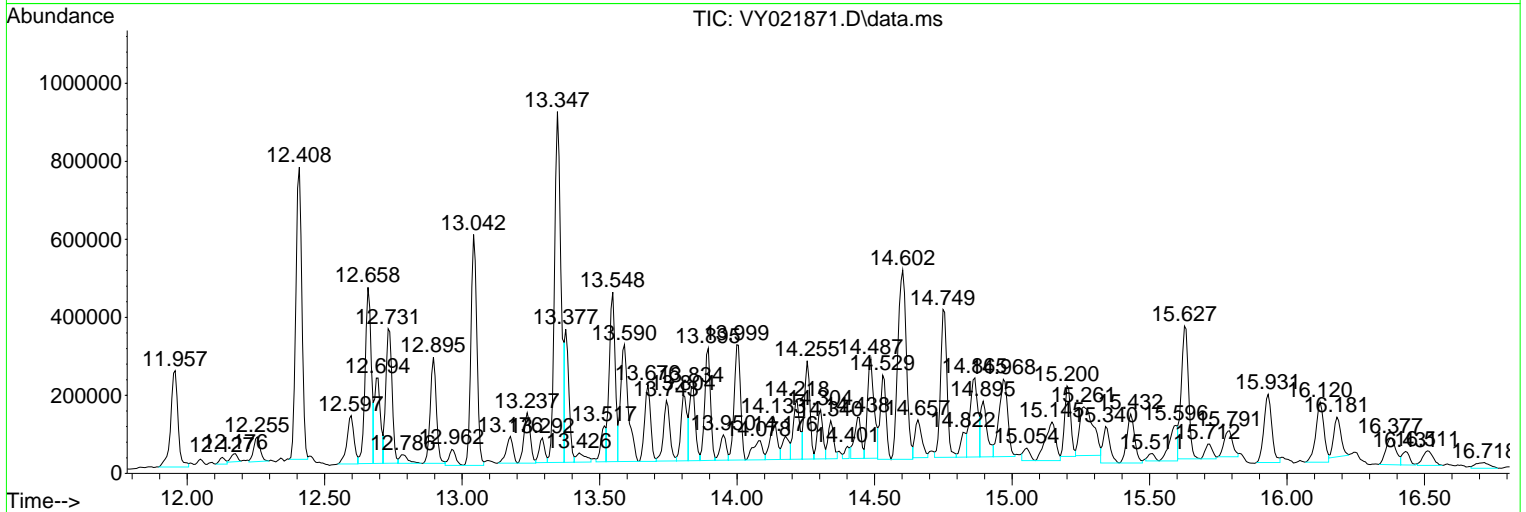
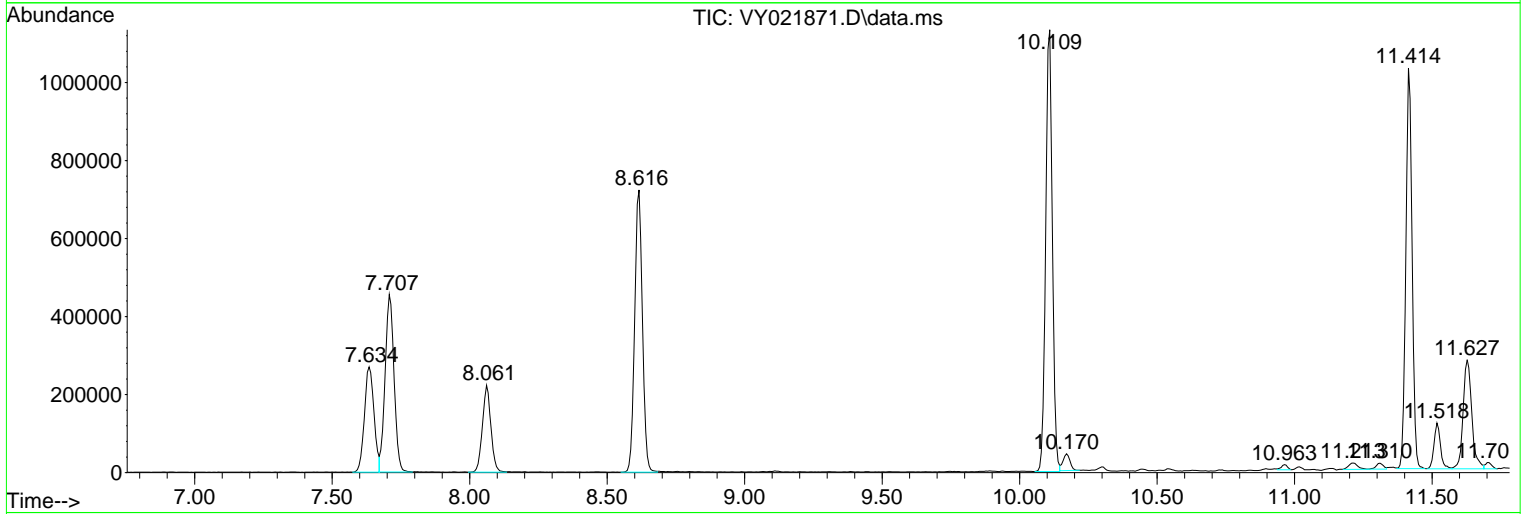
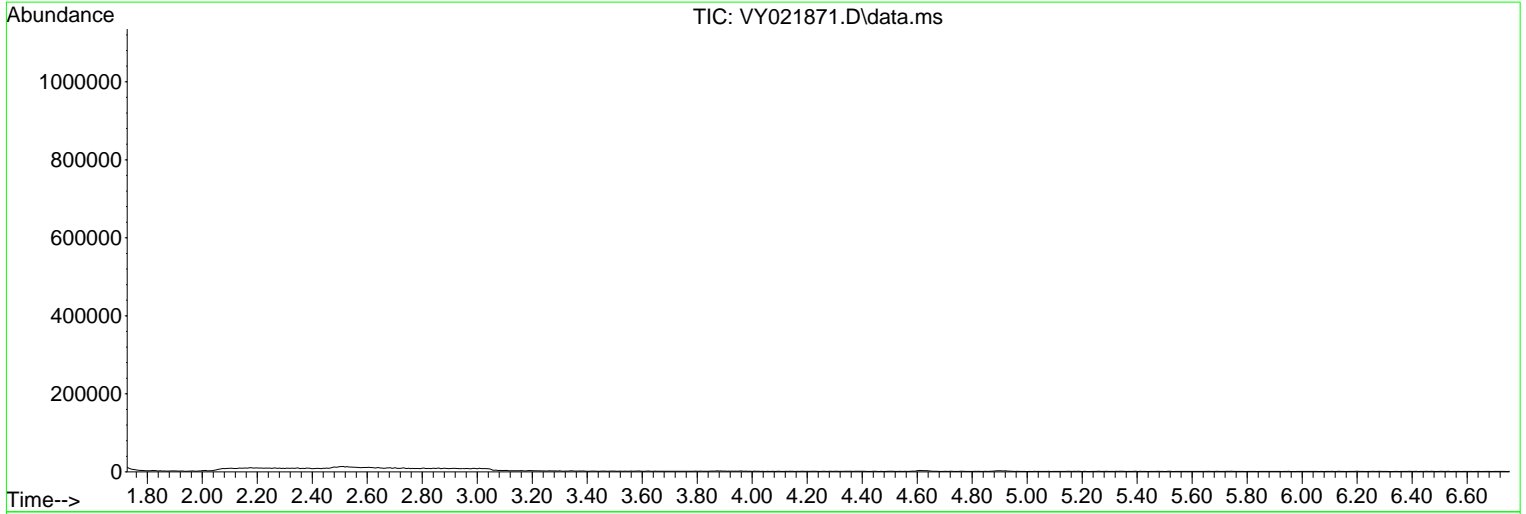
Sum of corrected areas: 27853136

Data Path : Z:\voasrv\HPCHEM1\MSVOA_Y\Data\VY041425\
 Data File : VY021871.D
 Acq On : 14 Apr 2025 15:50
 Operator : SY/MD
 Sample : Q1783-01
 Misc : 5.05g/5.0mL/MSVOA_Y/SOIL/B
 ALS Vial : 8 Sample Multiplier: 1

Instrument :
 MSVOA_Y
 ClientSampleId :
 SU-03-41125

Quant Method : Z:\voasrv\HPCHEM1\MSVOA_Y\methods\82Y032725S.M
 Quant Title : SW846 8260

TIC Library : C:\Database\NIST20.L
 TIC Integration Parameters: LSCINT.P



Data Path : Z:\voasrv\HPCHEM1\MSVOA_Y\Data\VY041425\
 Data File : VY021871.D
 Acq On : 14 Apr 2025 15:50
 Operator : SY/MD
 Sample : Q1783-01
 Misc : 5.05g/5.0mL/MSVOA_Y/SOIL/B
 ALS Vial : 8 Sample Multiplier: 1

Instrument :
 MSVOA_Y
 ClientSampleId :
 SU-03-41125

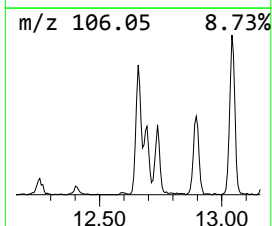
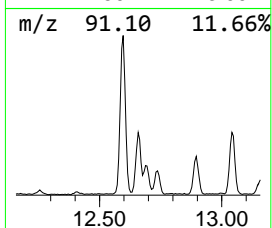
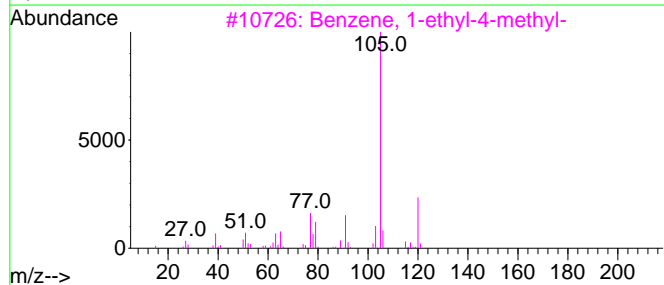
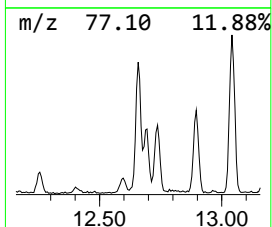
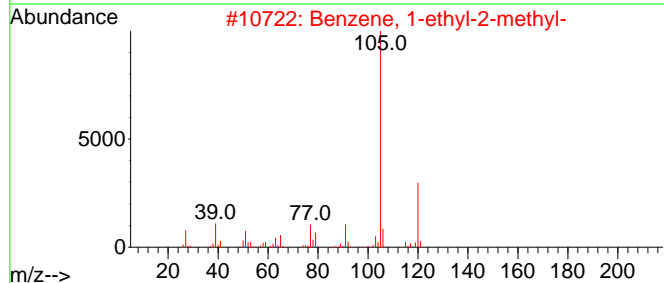
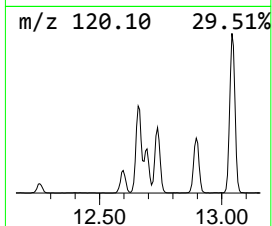
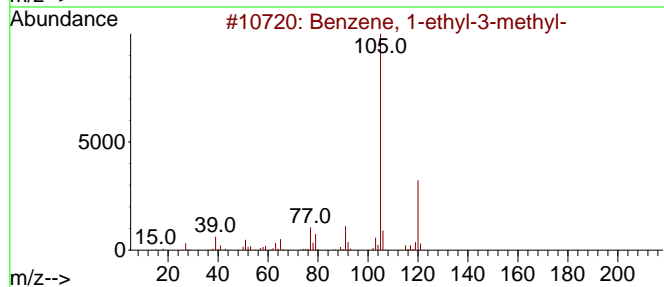
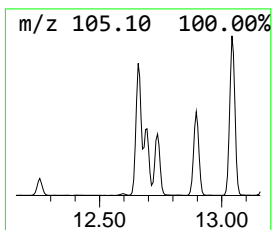
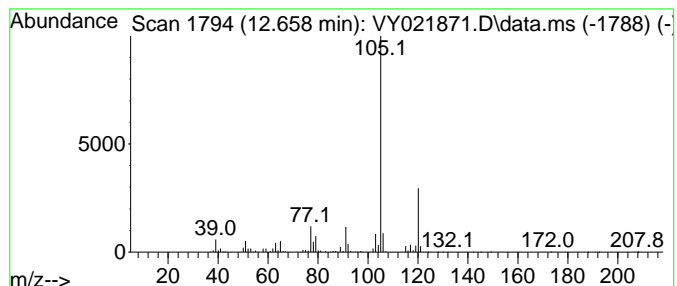
Quant Method : Z:\voasrv\HPCHEM1\MSVOA_Y\methods\82Y032725S.M
 Quant Title : SW846 8260

TIC Library : C:\Database\NIST20.L
 TIC Integration Parameters: LSCINT.P

 Peak Number 1 Benzene, 1-ethyl-3-methyl- Concentration Rank 2

R.T.	EstConc	Area	Relative to ISTD	R.T.
12.658	23.03 ug/l	700101	1,4-Dichlorobenzene-d4	13.347

Hit#	of	5	Tentative ID	MW	MolForm	CAS#	Qual
1			Benzene, 1-ethyl-3-methyl-	120	C9H12	000620-14-4	95
2			Benzene, 1-ethyl-2-methyl-	120	C9H12	000611-14-3	95
3			Benzene, 1-ethyl-4-methyl-	120	C9H12	000622-96-8	94
4			Benzene, 1,2,4-trimethyl-	120	C9H12	000095-63-6	91
5			Mesitylene	120	C9H12	000108-67-8	91



Data Path : Z:\voasrv\HPCHEM1\MSVOA_Y\Data\VY041425\
 Data File : VY021871.D
 Acq On : 14 Apr 2025 15:50
 Operator : SY/MD
 Sample : Q1783-01
 Misc : 5.05g/5.0mL/MSVOA_Y/SOIL/B
 ALS Vial : 8 Sample Multiplier: 1

Instrument :
 MSVOA_Y
 ClientSampleId :
 SU-03-41125

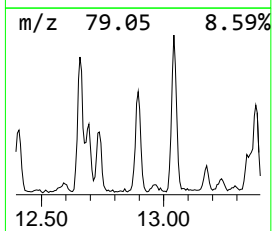
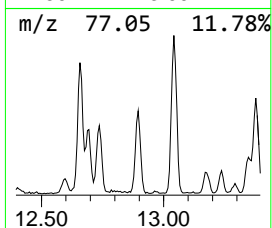
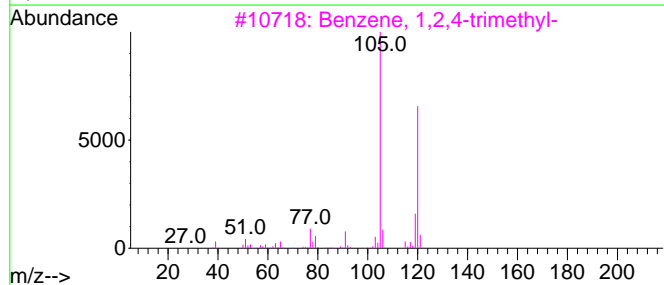
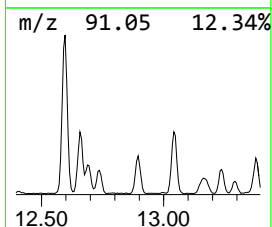
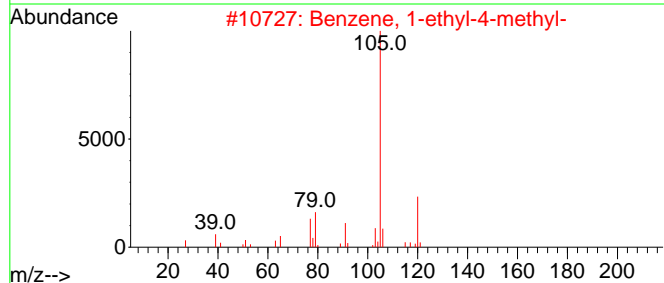
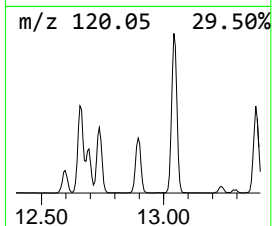
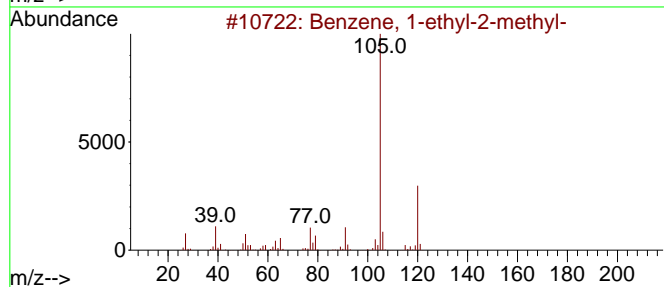
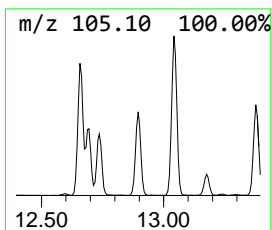
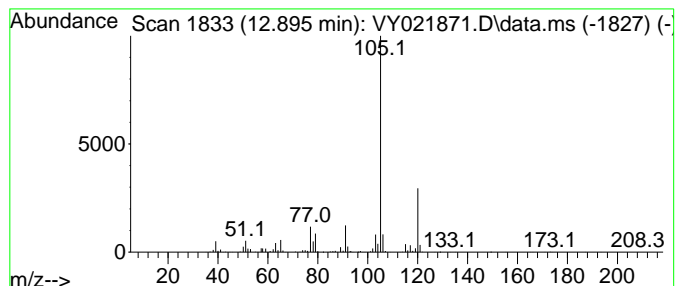
Quant Method : Z:\voasrv\HPCHEM1\MSVOA_Y\methods\82Y032725S.M
 Quant Title : SW846 8260

TIC Library : C:\Database\NIST20.L
 TIC Integration Parameters: LSCINT.P

 Peak Number 2 Benzene, 1-ethyl-2-methyl- Concentration Rank 10

R.T.	EstConc	Area	Relative to ISTD	R.T.
12.895	13.76 ug/l	418176	1,4-Dichlorobenzene-d4	13.347

Hit#	of	5	Tentative ID	MW	MolForm	CAS#	Qual
1			Benzene, 1-ethyl-2-methyl-	120	C9H12	000611-14-3	95
2			Benzene, 1-ethyl-4-methyl-	120	C9H12	000622-96-8	94
3			Benzene, 1,2,4-trimethyl-	120	C9H12	000095-63-6	91
4			Benzene, 1-ethyl-3-methyl-	120	C9H12	000620-14-4	91
5			Benzene, 1,2,3-trimethyl-	120	C9H12	000526-73-8	91



Data Path : Z:\voasrv\HPCHEM1\MSVOA_Y\Data\VY041425\
 Data File : VY021871.D
 Acq On : 14 Apr 2025 15:50
 Operator : SY/MD
 Sample : Q1783-01
 Misc : 5.05g/5.0mL/MSVOA_Y/SOIL/B
 ALS Vial : 8 Sample Multiplier: 1

Instrument :
 MSVOA_Y
 ClientSampleId :
 SU-03-41125

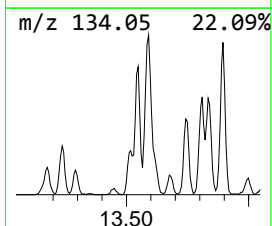
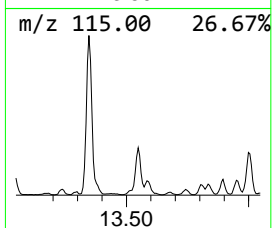
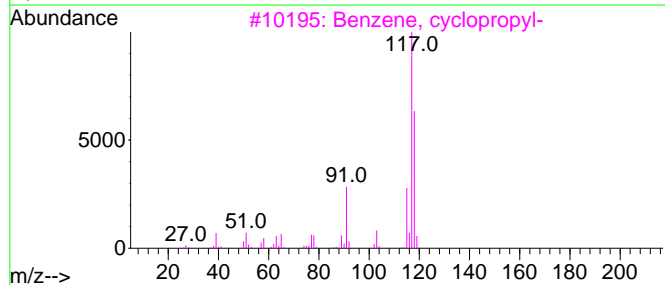
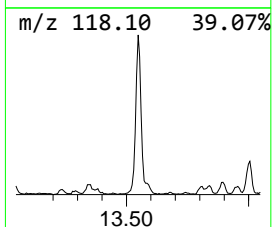
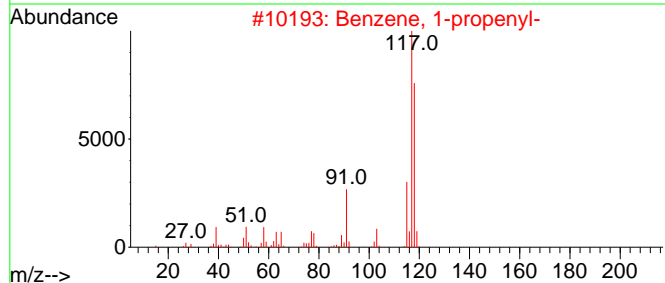
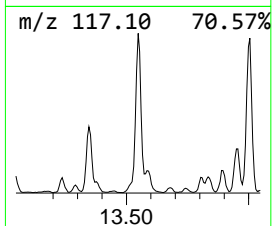
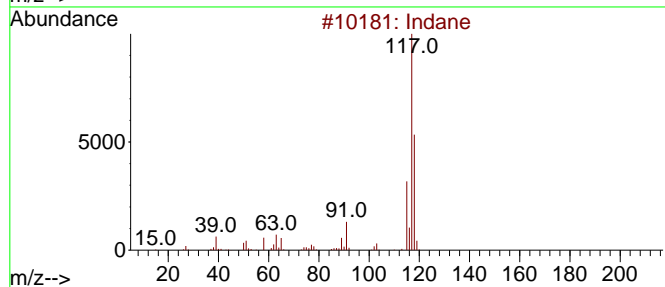
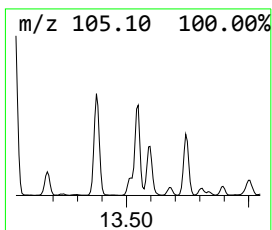
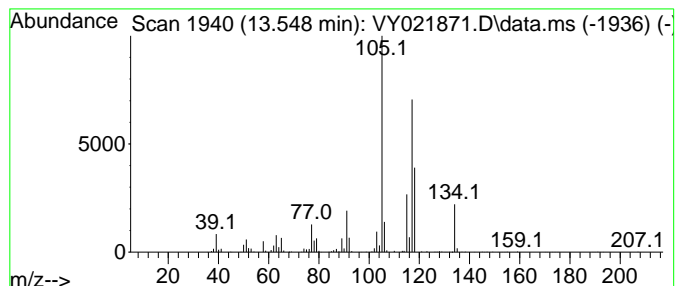
Quant Method : Z:\voasrv\HPCHEM1\MSVOA_Y\methods\82Y032725S.M
 Quant Title : SW846 8260

TIC Library : C:\Database\NIST20.L
 TIC Integration Parameters: LSCINT.P

 Peak Number 3 Indane Concentration Rank 3

R.T.	EstConc	Area	Relative to ISTD	R.T.
13.548	21.42 ug/l	650925	1,4-Dichlorobenzene-d4	13.347

Hit#	of	Tentative ID	MW	MolForm	CAS#	Qual
1	5	Indane	118	C9H10	000496-11-7	55
2		Benzene, 1-propenyl-	118	C9H10	000637-50-3	55
3		Benzene, cyclopropyl-	118	C9H10	000873-49-4	55
4		Benzene, 1-ethenyl-2-methyl-	118	C9H10	000611-15-4	55
5		Bicyclo[4.2.0]octa-1,3,5-triene,...	118	C9H10	055337-80-9	53



Data Path : Z:\voasrv\HPCHEM1\MSVOA_Y\Data\VY041425\
 Data File : VY021871.D
 Acq On : 14 Apr 2025 15:50
 Operator : SY/MD
 Sample : Q1783-01
 Misc : 5.05g/5.0mL/MSVOA_Y/SOIL/B
 ALS Vial : 8 Sample Multiplier: 1

Instrument :
 MSVOA_Y
 ClientSampleId :
 SU-03-41125

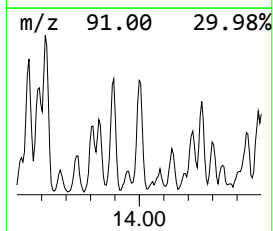
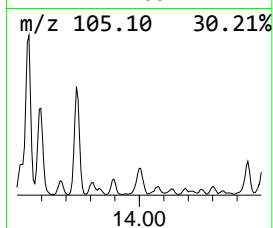
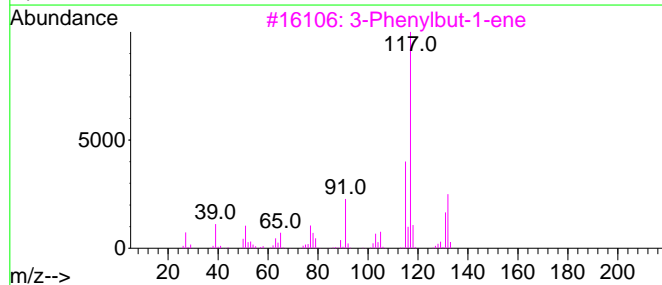
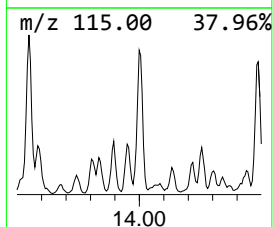
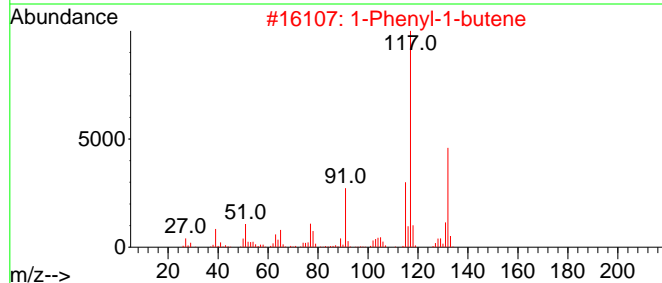
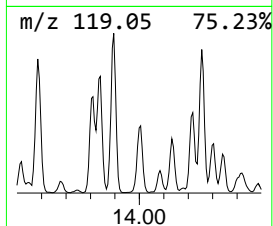
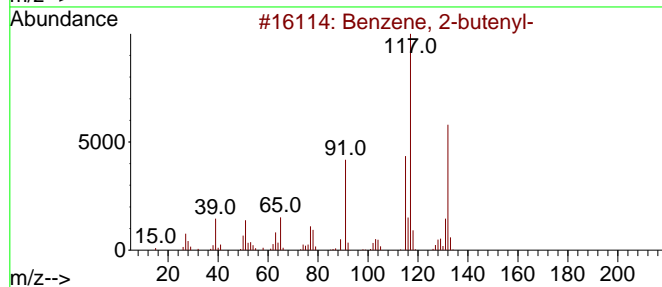
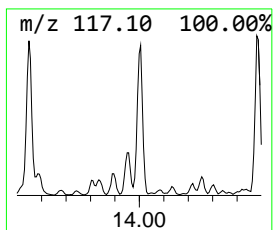
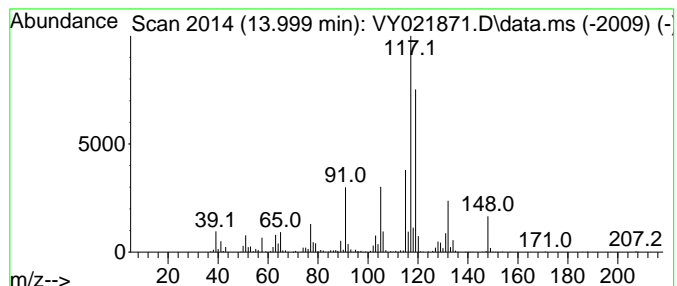
Quant Method : Z:\voasrv\HPCHEM1\MSVOA_Y\methods\82Y032725S.M
 Quant Title : SW846 8260

TIC Library : C:\Database\NIST20.L
 TIC Integration Parameters: LSCINT.P

 Peak Number 4 Benzene, 2-butenyl- Concentration Rank 6

R.T.	EstConc	Area	Relative to ISTD	R.T.
13.999	15.71 ug/l	477620	1,4-Dichlorobenzene-d4	13.347

Hit#	of 5	Tentative ID	MW	MolForm	CAS#	Qual
1		Benzene, 2-butenyl-	132	C10H12	001560-06-1	70
2		1-Phenyl-1-butene	132	C10H12	000824-90-8	64
3		3-Phenylbut-1-ene	132	C10H12	000934-10-1	55
4		1-Methyl-2-phenylcyclopropane	132	C10H12	003145-76-4	50
5		(E)-1-Phenyl-1-butene	132	C10H12	001005-64-7	50



Data Path : Z:\voasrv\HPCHEM1\MSVOA_Y\Data\VY041425\
 Data File : VY021871.D
 Acq On : 14 Apr 2025 15:50
 Operator : SY/MD
 Sample : Q1783-01
 Misc : 5.05g/5.0mL/MSVOA_Y/SOIL/B
 ALS Vial : 8 Sample Multiplier: 1

Instrument :
 MSVOA_Y
 ClientSampleId :
 SU-03-41125

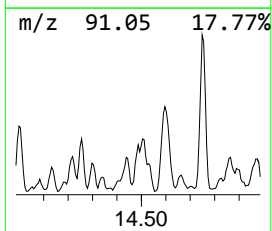
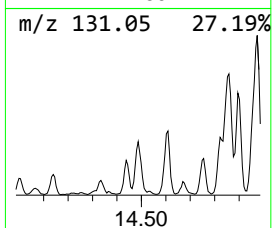
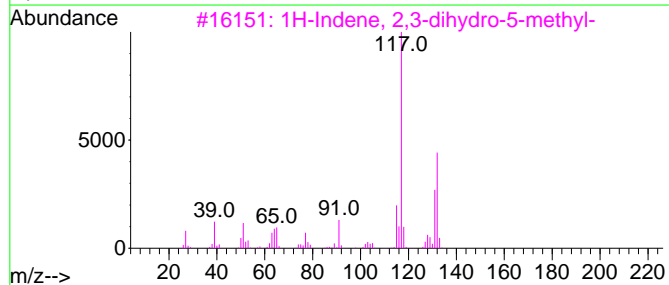
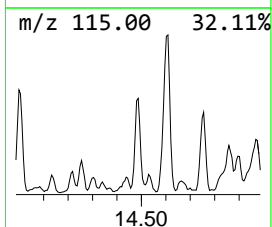
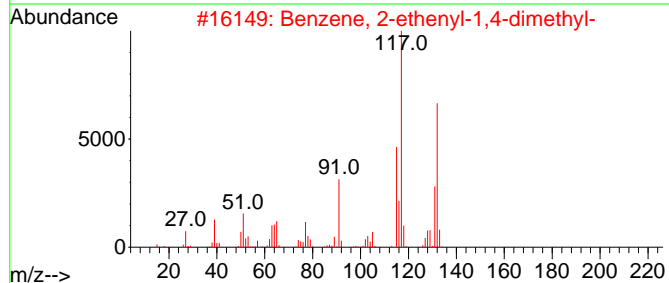
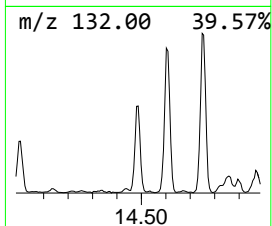
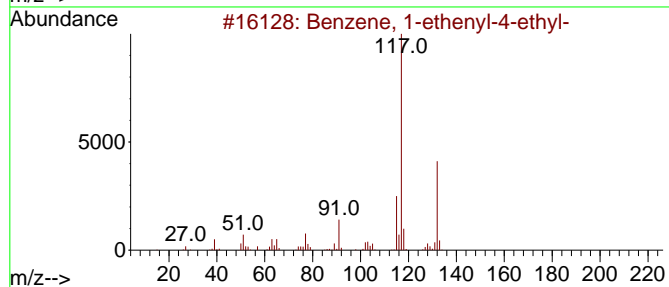
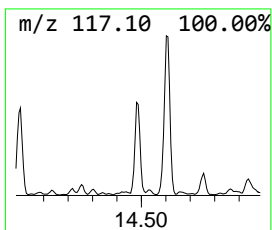
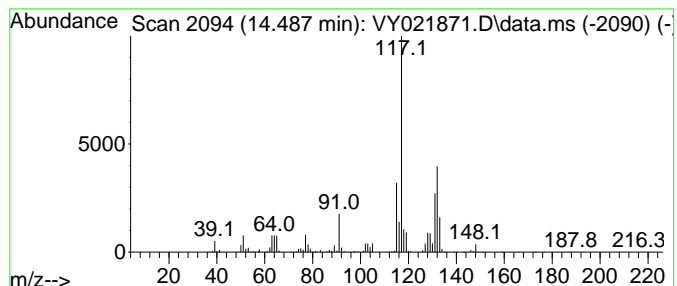
Quant Method : Z:\voasrv\HPCHEM1\MSVOA_Y\methods\82Y032725S.M
 Quant Title : SW846 8260

TIC Library : C:\Database\NIST20.L
 TIC Integration Parameters: LSCINT.P

 Peak Number 5 Benzene, 1-ethenyl-4-ethyl- Concentration Rank 7

R.T.	EstConc	Area	Relative to ISTD	R.T.
14.487	14.33 ug/l	435434	1,4-Dichlorobenzene-d4	13.347

Hit#	of	5	Tentative ID	MW	MolForm	CAS#	Qual
1			Benzene, 1-ethenyl-4-ethyl-	132	C10H12	003454-07-7	93
2			Benzene, 2-ethenyl-1,4-dimethyl-	132	C10H12	002039-89-6	91
3			1H-Indene, 2,3-dihydro-5-methyl-	132	C10H12	000874-35-1	87
4			Benzene, 1-ethenyl-3-ethyl-	132	C10H12	007525-62-4	81
5			3-Phenylbut-1-ene	132	C10H12	000934-10-1	80



Data Path : Z:\voasrv\HPCHEM1\MSVOA_Y\Data\VY041425\
 Data File : VY021871.D
 Acq On : 14 Apr 2025 15:50
 Operator : SY/MD
 Sample : Q1783-01
 Misc : 5.05g/5.0mL/MSVOA_Y/SOIL/B
 ALS Vial : 8 Sample Multiplier: 1

Instrument :
 MSVOA_Y
 ClientSampleId :
 SU-03-41125

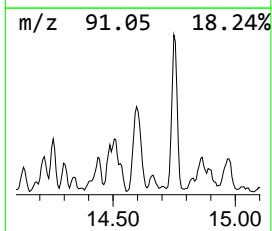
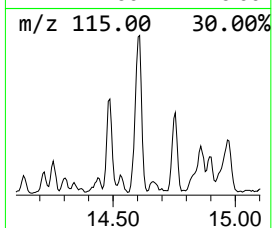
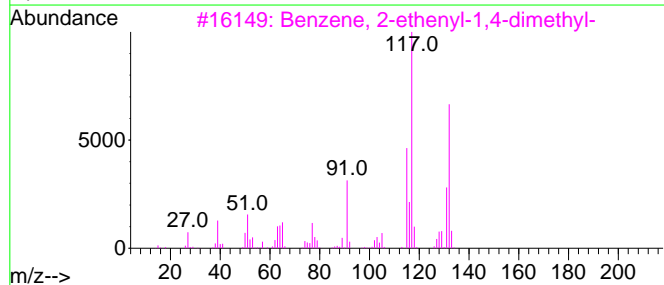
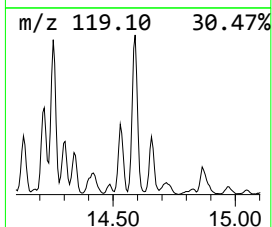
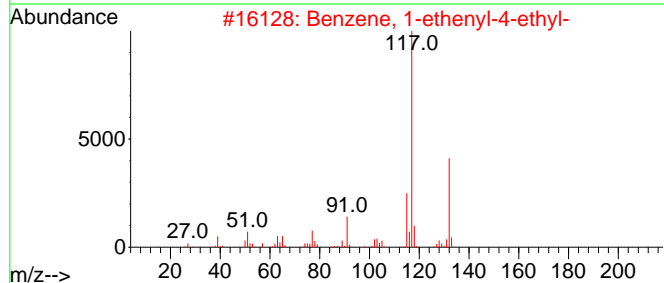
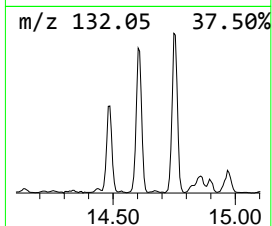
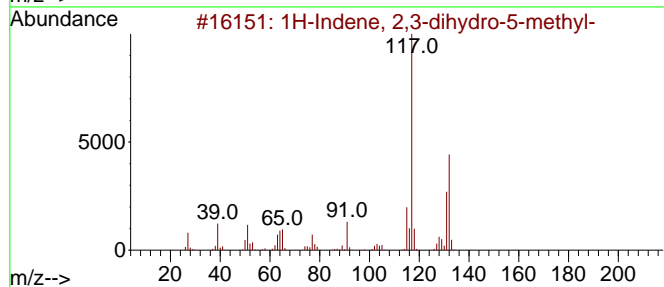
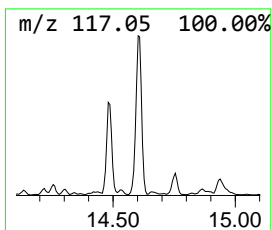
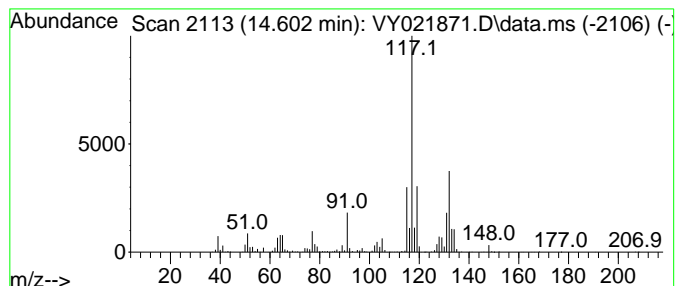
Quant Method : Z:\voasrv\HPCHEM1\MSVOA_Y\methods\82Y032725S.M
 Quant Title : SW846 8260

TIC Library : C:\Database\NIST20.L
 TIC Integration Parameters: LSCINT.P

 Peak Number 6 1H-Indene, 2,3-dihydro-5-me... Concentration Rank 1

R.T.	EstConc	Area	Relative to ISTD	R.T.
14.602	34.48 ug/l	1048090	1,4-Dichlorobenzene-d4	13.347

Hit#	of 5	Tentative ID	MW	MolForm	CAS#	Qual
1		1H-Indene, 2,3-dihydro-5-methyl-	132	C10H12	000874-35-1	94
2		Benzene, 1-ethenyl-4-ethyl-	132	C10H12	003454-07-7	93
3		Benzene, 2-ethenyl-1,4-dimethyl-	132	C10H12	002039-89-6	90
4		3-Phenylbut-1-ene	132	C10H12	000934-10-1	81
5		1H-Indene, 2,3-dihydro-4-methyl-	132	C10H12	000824-22-6	76



Data Path : Z:\voasrv\HPCHEM1\MSVOA_Y\Data\VY041425\
 Data File : VY021871.D
 Acq On : 14 Apr 2025 15:50
 Operator : SY/MD
 Sample : Q1783-01
 Misc : 5.05g/5.0mL/MSVOA_Y/SOIL/B
 ALS Vial : 8 Sample Multiplier: 1

Instrument :
 MSVOA_Y
 ClientSampleId :
 SU-03-41125

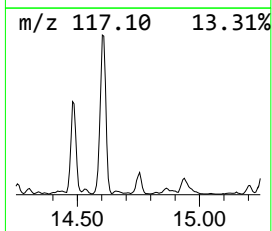
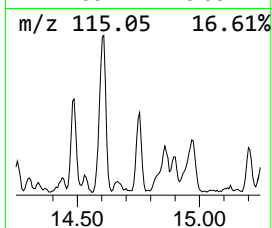
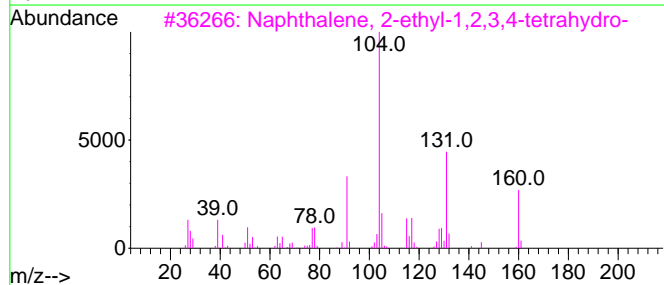
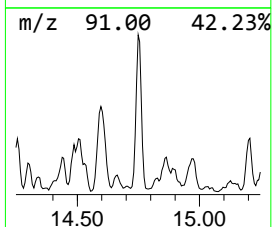
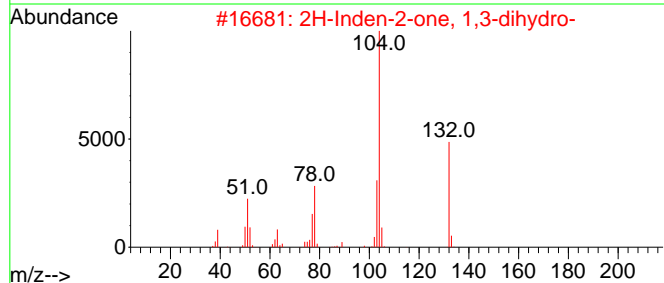
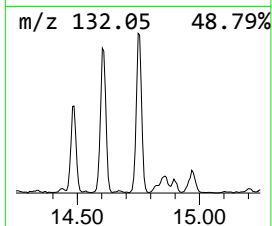
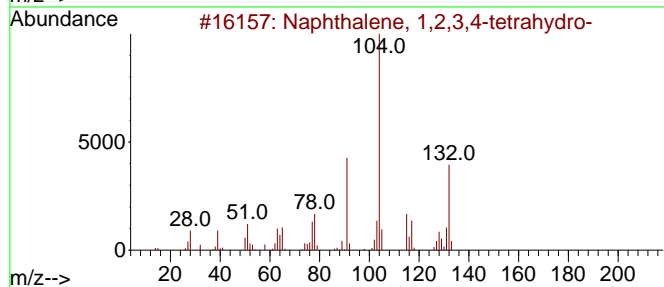
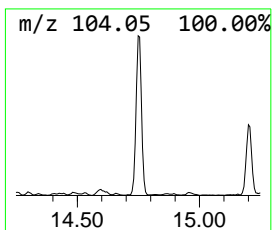
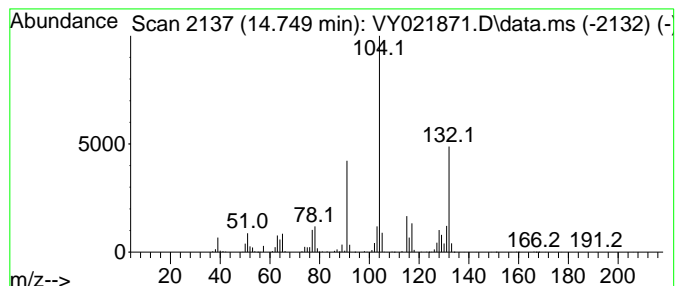
Quant Method : Z:\voasrv\HPCHEM1\MSVOA_Y\methods\82Y032725S.M
 Quant Title : SW846 8260

TIC Library : C:\Database\NIST0.L
 TIC Integration Parameters: LSCINT.P

 Peak Number 7 Naphthalene, 1,2,3,4-tetra... Concentration Rank 5

R.T.	EstConc	Area	Relative to ISTD	R.T.
14.749	19.99 ug/l	607709	1,4-Dichlorobenzene-d4	13.347

Hit#	of 5	Tentative ID	MW	MolForm	CAS#	Qual
1		Naphthalene, 1,2,3,4-tetrahydro-	132	C10H12	000119-64-2	96
2		2H-Inden-2-one, 1,3-dihydro-	132	C9H8O	000615-13-4	58
3		Naphthalene, 2-ethyl-1,2,3,4-tet...	160	C12H16	032367-54-7	53
4		2-Methylbenzyl cyanide	131	C9H9N	022364-68-7	49
5		Benzene, 3-cyclohexen-1-yl-	158	C12H14	004994-16-5	47



Data Path : Z:\voasrv\HPCHEM1\MSVOA_Y\Data\VY041425\
 Data File : VY021871.D
 Acq On : 14 Apr 2025 15:50
 Operator : SY/MD
 Sample : Q1783-01
 Misc : 5.05g/5.0mL/MSVOA_Y/SOIL/B
 ALS Vial : 8 Sample Multiplier: 1

Instrument :
 MSVOA_Y
 ClientSampleId :
 SU-03-41125

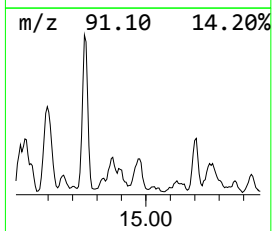
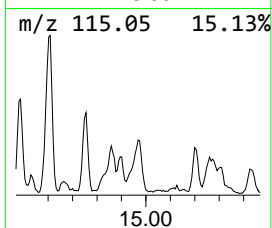
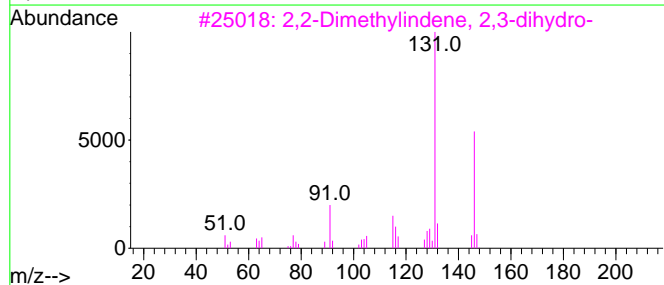
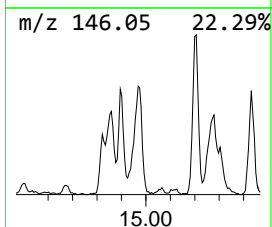
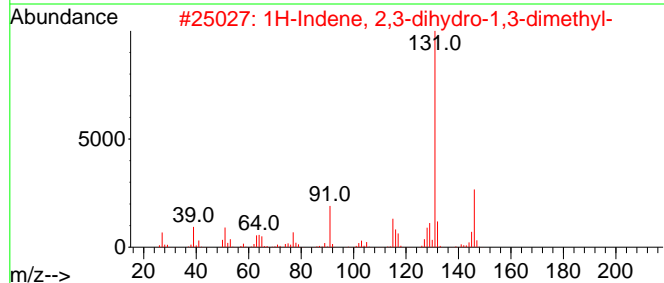
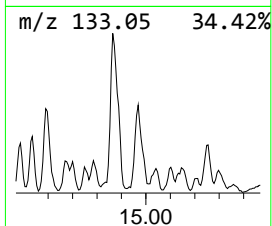
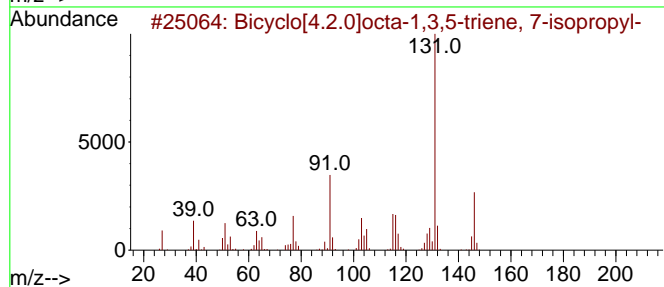
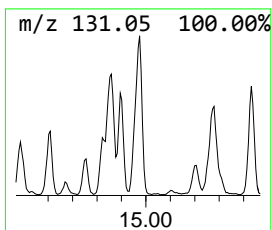
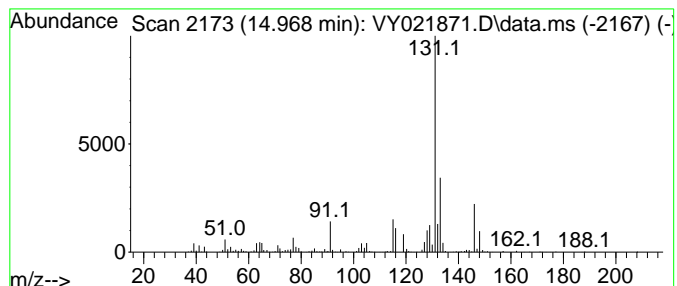
Quant Method : Z:\voasrv\HPCHEM1\MSVOA_Y\methods\82Y032725S.M
 Quant Title : SW846 8260

TIC Library : C:\Database\NIST20.L
 TIC Integration Parameters: LSCINT.P

 Peak Number 8 Bicyclo[4.2.0]octa-1,3,5-tr... Concentration Rank 9

R.T.	EstConc	Area	Relative to ISTD	R.T.
14.968	14.17 ug/l	430547	1,4-Dichlorobenzene-d4	13.347

Hit#	of	5	Tentative ID	MW	MolForm	CAS#	Qual
1			Bicyclo[4.2.0]octa-1,3,5-triene,...	146	C11H14	027087-54-3	93
2			1H-Indene, 2,3-dihydro-1,3-dimet...	146	C11H14	004175-53-5	81
3			2,2-Dimethylindene, 2,3-dihydro-	146	C11H14	020836-11-7	81
4			1H-Indene, 2,3-dihydro-1,6-dimet...	146	C11H14	017059-48-2	81
5			Naphthalene, 1,2,3,4-tetrahydro-...	146	C11H14	001559-81-5	76



Data Path : Z:\voasrv\HPCHEM1\MSVOA_Y\Data\VY041425\
 Data File : VY021871.D
 Acq On : 14 Apr 2025 15:50
 Operator : SY/MD
 Sample : Q1783-01
 Misc : 5.05g/5.0mL/MSVOA_Y/SOIL/B
 ALS Vial : 8 Sample Multiplier: 1

Instrument :
 MSVOA_Y
 ClientSampleId :
 SU-03-41125

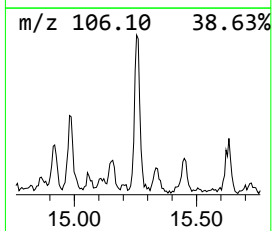
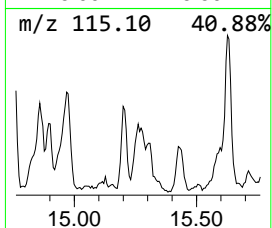
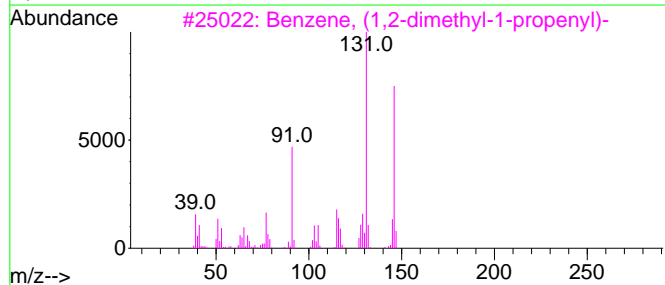
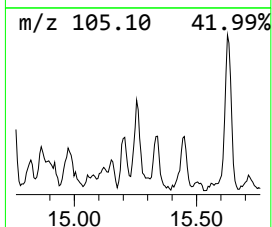
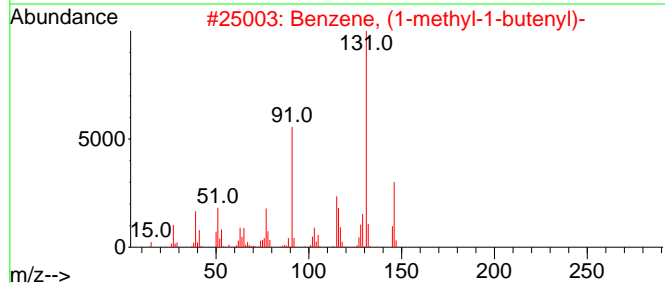
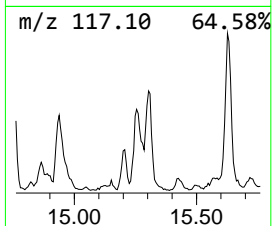
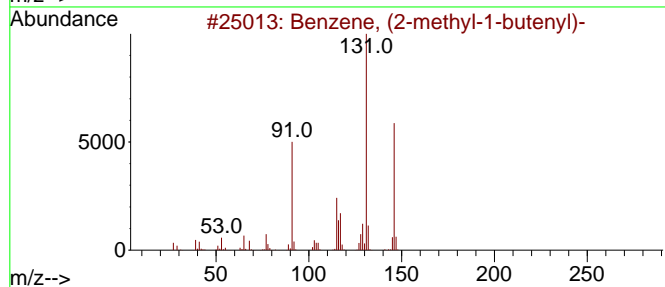
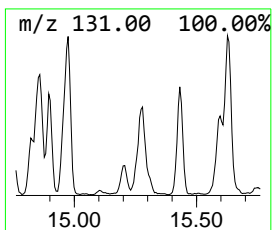
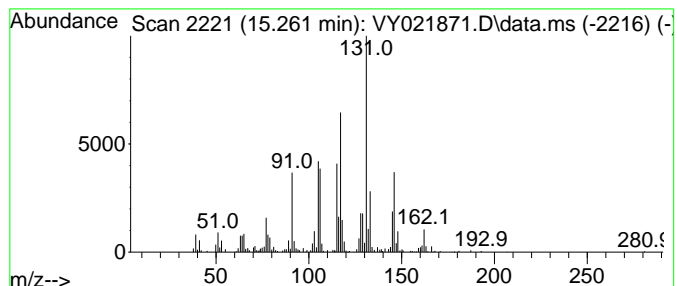
Quant Method : Z:\voasrv\HPCHEM1\MSVOA_Y\methods\82Y032725S.M
 Quant Title : SW846 8260

TIC Library : C:\Database\NIST20.L
 TIC Integration Parameters: LSCINT.P

 Peak Number 9 Benzene, (2-methyl-1-butenyl)- Concentration Rank 8

R.T.	EstConc	Area	Relative to ISTD	R.T.
15.261	14.32 ug/l	435160	1,4-Dichlorobenzene-d4	13.347

Hit#	of 5	Tentative ID	MW	MolForm	CAS#	Qual
1		Benzene, (2-methyl-1-butenyl)-	146	C11H14	056253-64-6	90
2		Benzene, (1-methyl-1-butenyl)-	146	C11H14	053172-84-2	50
3		Benzene, (1,2-dimethyl-1-propenyl)-	146	C11H14	000769-57-3	50
4		Benzene, (3-methyl-2-butenyl)-	146	C11H14	004489-84-3	46
5		Benzene, 1-methyl-3-(1-methyl-2-...	146	C11H14	052161-57-6	46



Data Path : Z:\voasrv\HPCHEM1\MSVOA_Y\Data\VY041425\
 Data File : VY021871.D
 Acq On : 14 Apr 2025 15:50
 Operator : SY/MD
 Sample : Q1783-01
 Misc : 5.05g/5.0mL/MSVOA_Y/SOIL/B
 ALS Vial : 8 Sample Multiplier: 1

Instrument :
 MSVOA_Y
 ClientSampleId :
 SU-03-41125

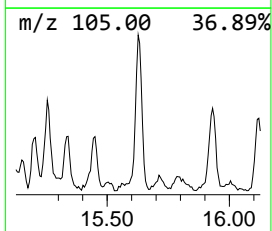
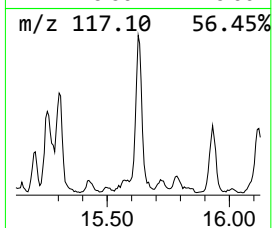
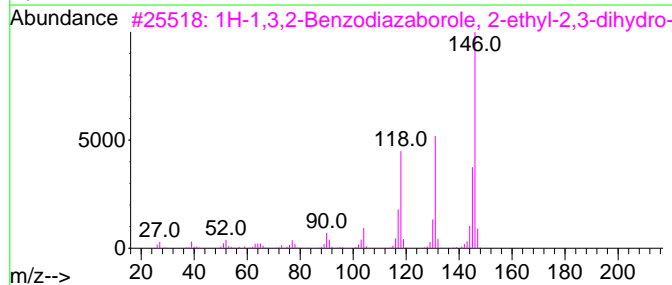
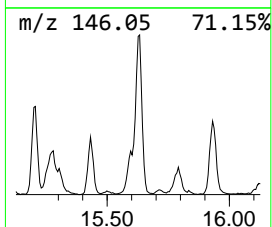
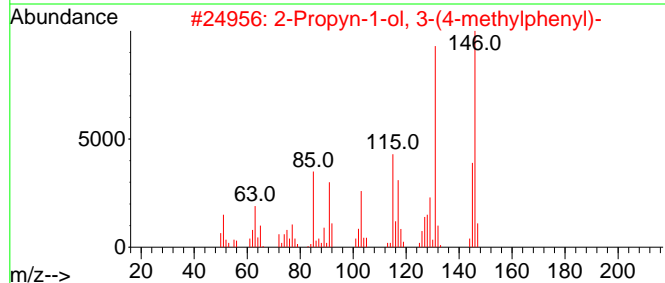
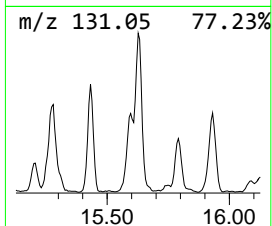
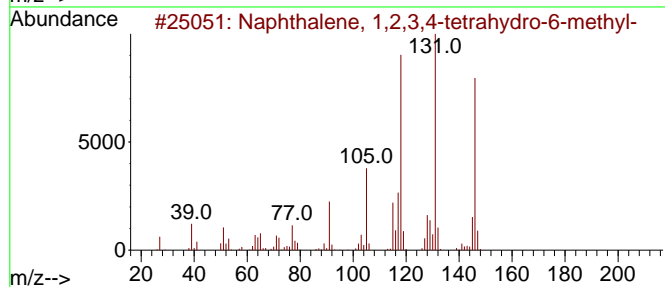
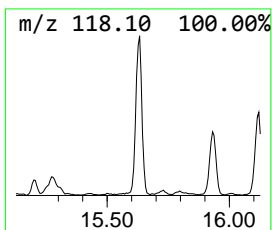
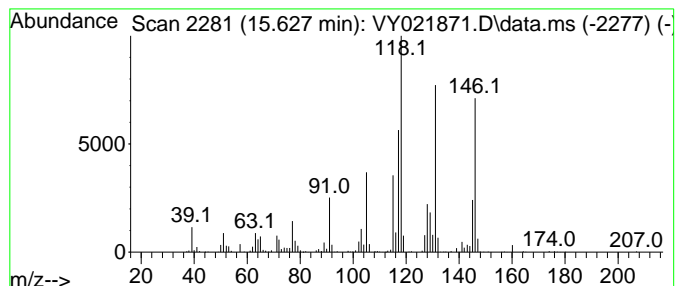
Quant Method : Z:\voasrv\HPCHEM1\MSVOA_Y\methods\82Y032725S.M
 Quant Title : SW846 8260

TIC Library : C:\Database\NIST20.L
 TIC Integration Parameters: LSCINT.P

 Peak Number 10 Naphthalene, 1,2,3,4-tetra... Concentration Rank 4

R.T.	EstConc	Area	Relative to ISTD	R.T.
15.627	20.14 ug/l	612006	1,4-Dichlorobenzene-d4	13.347

Hit#	of 5	Tentative ID	MW	MolForm	CAS#	Qual
1		Naphthalene, 1,2,3,4-tetrahydro-...	146	C11H14	001680-51-9	87
2		2-Propyn-1-ol, 3-(4-methylphenyl)-	146	C10H10O	016017-24-6	70
3		1H-1,3,2-Benzodiazaborole, 2-eth...	146	C8H11BN2	074663-81-3	62
4		2,3,4,5,6,7-Hexahydro-1H-cyclope...	146	C11H14	1010189-31-0	62
5		Naphthalene, 1,2,3,4-tetrahydro-...	146	C11H14	002809-64-5	58



Data Path : Z:\voasrv\HPCHEM1\MSVOA_Y\Data\VY041425\
Data File : VY021871.D
Acq On : 14 Apr 2025 15:50
Operator : SY/MD
Sample : Q1783-01
Misc : 5.05g/5.0mL/MSVOA_Y/SOIL/B
ALS Vial : 8 Sample Multiplier: 1

Instrument :
MSVOA_Y
ClientSampleId :
SU-03-41125

Quant Method : Z:\voasrv\HPCHEM1\MSVOA_Y\methods\82Y032725S.M
Quant Title : SW846 8260

TIC Library : C:\Database\NIST0.L
TIC Integration Parameters: LSCINT.P

TIC Top Hit name	RT	EstConc	Units	Response	--Internal Standard--			
					#	RT	Resp	Conc
Benzene, 1-ethy...	12.658	23.0	ug/l	700101	4	13.347	1519670	50.0
Benzene, 1-ethy...	12.895	13.8	ug/l	418176	4	13.347	1519670	50.0
Indane	13.548	21.4	ug/l	650925	4	13.347	1519670	50.0
Benzene, 2-bute...	13.999	15.7	ug/l	477620	4	13.347	1519670	50.0
Benzene, 1-ethe...	14.487	14.3	ug/l	435434	4	13.347	1519670	50.0
1H-Indene, 2,3-...	14.602	34.5	ug/l	1048090	4	13.347	1519670	50.0
Naphthalene, 1,...	14.749	20.0	ug/l	607709	4	13.347	1519670	50.0
Bicyclo[4.2.0]o...	14.968	14.2	ug/l	430547	4	13.347	1519670	50.0
Benzene, (2-met...	15.261	14.3	ug/l	435160	4	13.347	1519670	50.0
Naphthalene, 1,...	15.627	20.1	ug/l	612006	4	13.347	1519670	50.0