

Data Path : Z:\voasrv\HPCHEM1\MSVOA_Y\Data\VY041725\
 Data File : VY021910.D
 Acq On : 17 Apr 2025 14:52
 Operator : SY/MD
 Sample : Q1825-07
 Misc : 3.76g/5.0mL/MSVOA_Y/SOIL/A
 ALS Vial : 12 Sample Multiplier: 1

Instrument :
 MSVOA_Y
 ClientSampleId :
 TP-11

Integration Parameters: RTEINT.P

Integrator: RTE
 Smoothing : ON Filtering: 5
 Sampling : 1 Min Area: 3 % of largest Peak
 Start Thrs: 0.2 Max Peaks: 100
 Stop Thrs : 0 Peak Location: TOP

If leading or trailing edge < 100 prefer < Baseline drop else tangent >
 Peak separation: 5

Method : Z:\voasrv\HPCHEM1\MSVOA_Y\methods\82Y032725S.M
 Title : SW846 8260

Signal : TIC: VY021910.D\data.ms

peak #	R.T. min	first scan	max scan	last scan	PK TY	peak height	corr. area	corr. % max.	% of total
1	7.634	958	970	976	rBV2	194016	474229	34.42%	6.897%
2	7.707	976	982	995	rVB	306633	703325	51.05%	10.230%
3	8.061	1031	1040	1052	rBV	154166	342311	24.85%	4.979%
4	8.616	1122	1131	1144	rBV	516271	1014466	73.63%	14.755%
5	10.103	1364	1375	1385	rBV	794602	1377700	100.00%	20.038%
6	11.414	1583	1590	1603	rBV	714068	1148647	83.37%	16.707%
7	11.627	1615	1625	1630	rBV	6654	18818	1.37%	0.274%
8	12.408	1745	1753	1762	rBV	506337	797502	57.89%	11.599%
9	13.182	1869	1880	1889	rVB	7442	29681	2.15%	0.432%
10	13.347	1900	1907	1918	rBV	586767	913289	66.29%	13.283%
11	13.676	1955	1961	1966	rBV7	7733	14423	1.05%	0.210%
12	13.889	1992	1996	2002	rVB7	7564	14415	1.05%	0.210%
13	15.139	2196	2201	2208	rVB	13707	26594	1.93%	0.387%

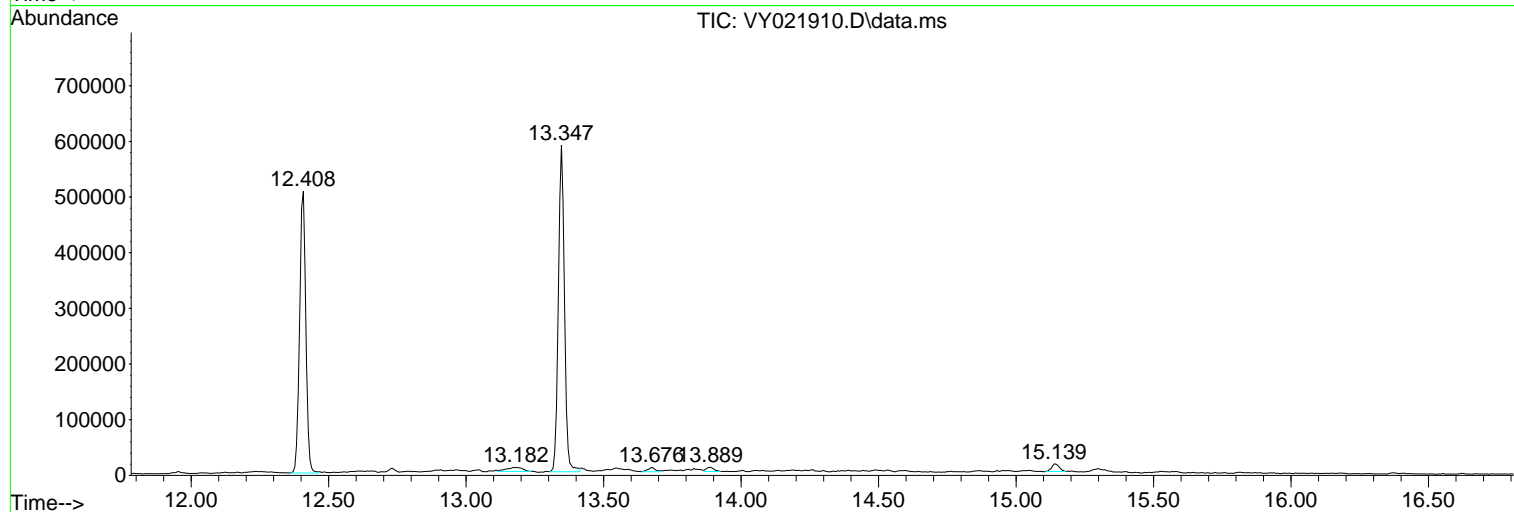
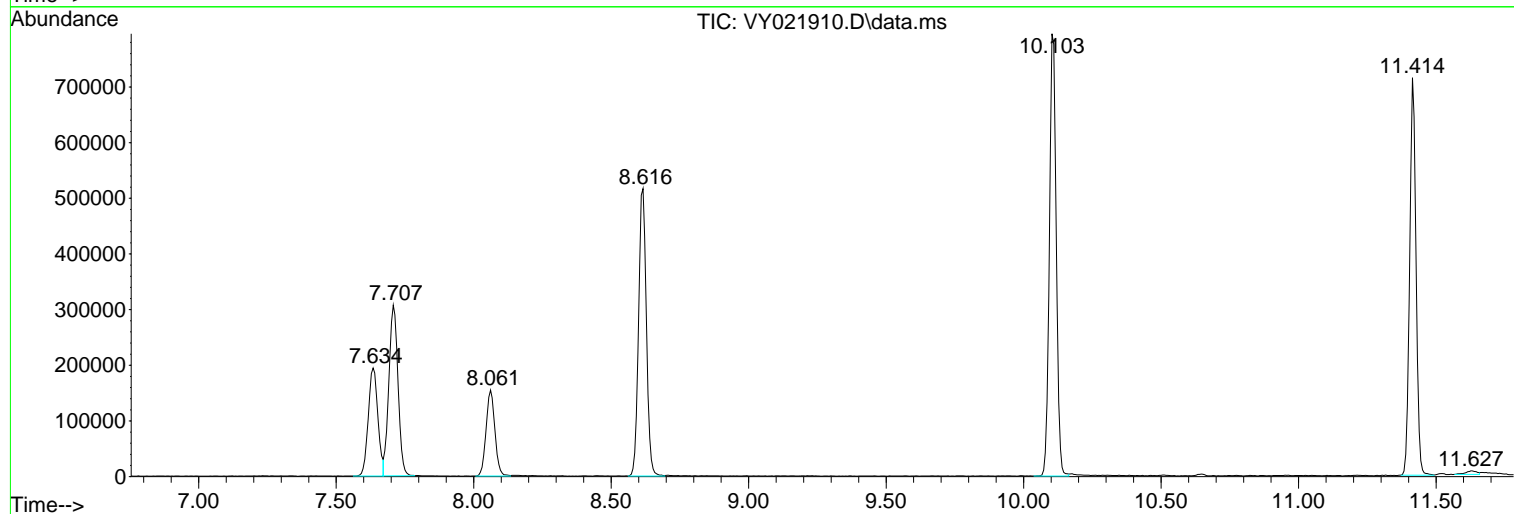
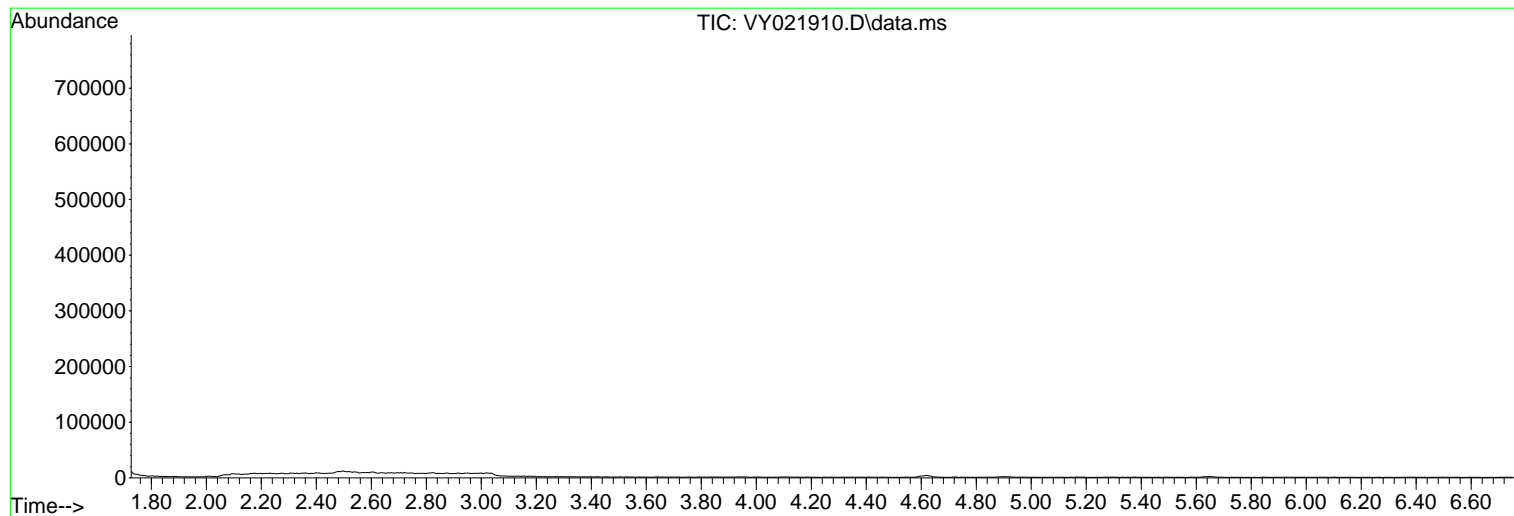
Sum of corrected areas: 6875400

Data Path : Z:\voasrv\HPCHEM1\MSVOA_Y\Data\VY041725\
Data File : VY021910.D
Acq On : 17 Apr 2025 14:52
Operator : SY/MD
Sample : Q1825-07
Misc : 3.76g/5.0mL/MSVOA_Y/SOIL/A
ALS Vial : 12 Sample Multiplier: 1

Instrument :
MSVOA_Y
ClientSampleId :
TP-11

Quant Method : Z:\voasrv\HPCHEM1\MSVOA_Y\methods\82Y032725S.M
Quant Title : SW846 8260

TIC Library : C:\Database\NIST20.L
TIC Integration Parameters: LSCINT.P



Library Search Compound Report

Data Path : Z:\voasrv\HPCHEM1\MSVOA_Y\Data\VY041725\
Data File : VY021910.D
Acq On : 17 Apr 2025 14:52
Operator : SY/MD
Sample : Q1825-07
Misc : 3.76g/5.0mL/MSVOA_Y/SOIL/A
ALS Vial : 12 Sample Multiplier: 1

Instrument :
MSVOA_Y
ClientSampleId :
TP-11

Quant Method : Z:\voasrv\HPCHEM1\MSVOA_Y\methods\82Y032725S.M
Quant Title : SW846 8260

TIC Library : C:\Database\NIST20.L
TIC Integration Parameters: LSCINT.P

No Library Search Compounds Detected

Data Path : Z:\voasrv\HPCHEM1\MSVOA_Y\Data\VY041725\
Data File : VY021910.D
Acq On : 17 Apr 2025 14:52
Operator : SY/MD
Sample : Q1825-07
Misc : 3.76g/5.0mL/MSVOA_Y/SOIL/A
ALS Vial : 12 Sample Multiplier: 1

Instrument :
MSVOA_Y
ClientSampleId :
TP-11

Quant Method : Z:\voasrv\HPCHEM1\MSVOA_Y\methods\82Y032725S.M
Quant Title : SW846 8260

TIC Library : C:\Database\NIST20.L
TIC Integration Parameters: LSCINT.P

TIC Top Hit name	RT	EstConc	Units	Response	#	RT	Resp	Conc
------------------	----	---------	-------	----------	---	----	------	------
